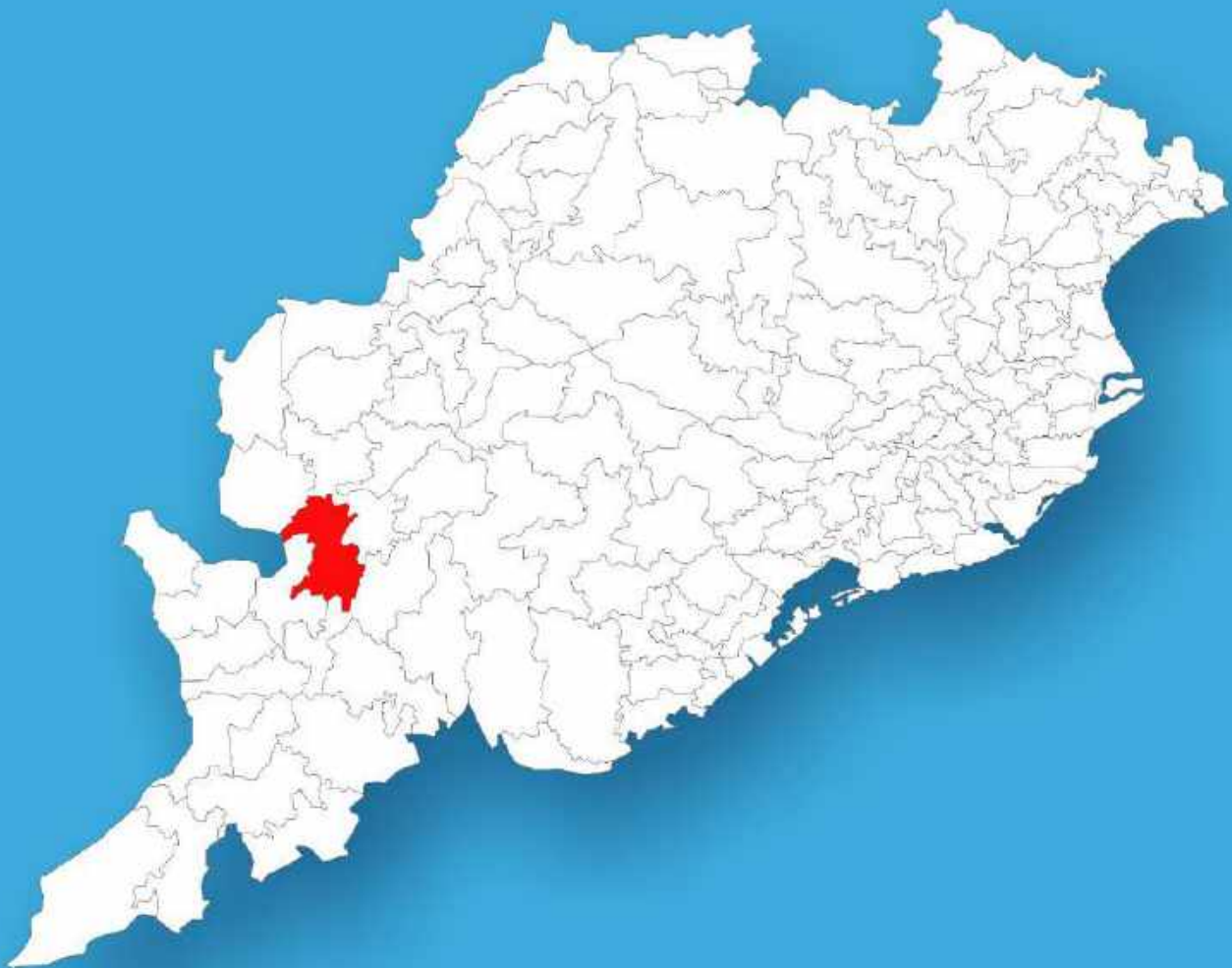




Odisha

Assembly Factbook™

Junagarh Assembly Constituency



Key Electoral Data of Junagarh
Assembly Constituency (Vidhan Sabha)

Odisha

Assembly Factbook™

Junagarh Assembly Constituency



Jungarh Vidhan Sabha

Editor & Director

Dr. R.K. Thukral

Research Editor

Dr. Shafeeq Rahman

Compiled, Researched and Published by Datanet India Pvt. Ltd.

D-100, 1st Floor,

Okhla Industrial Area, Phase-I,
New Delhi- 110020.

Ph.: 91-11- 43580781-84

Email : support@indiastatpublications.com

Website : www.indiastatelections.com

Online Book Store :

www.indiastatpublications.com

Report No. : AFB/OD-078-0125

ISBN : 978-93-5313-249-1

First Edition : January, 2018

Eighth Updated Edition : January, 2025

Price : Rs. 11500/-

US\$ 310

© Datanet India Pvt. Ltd.

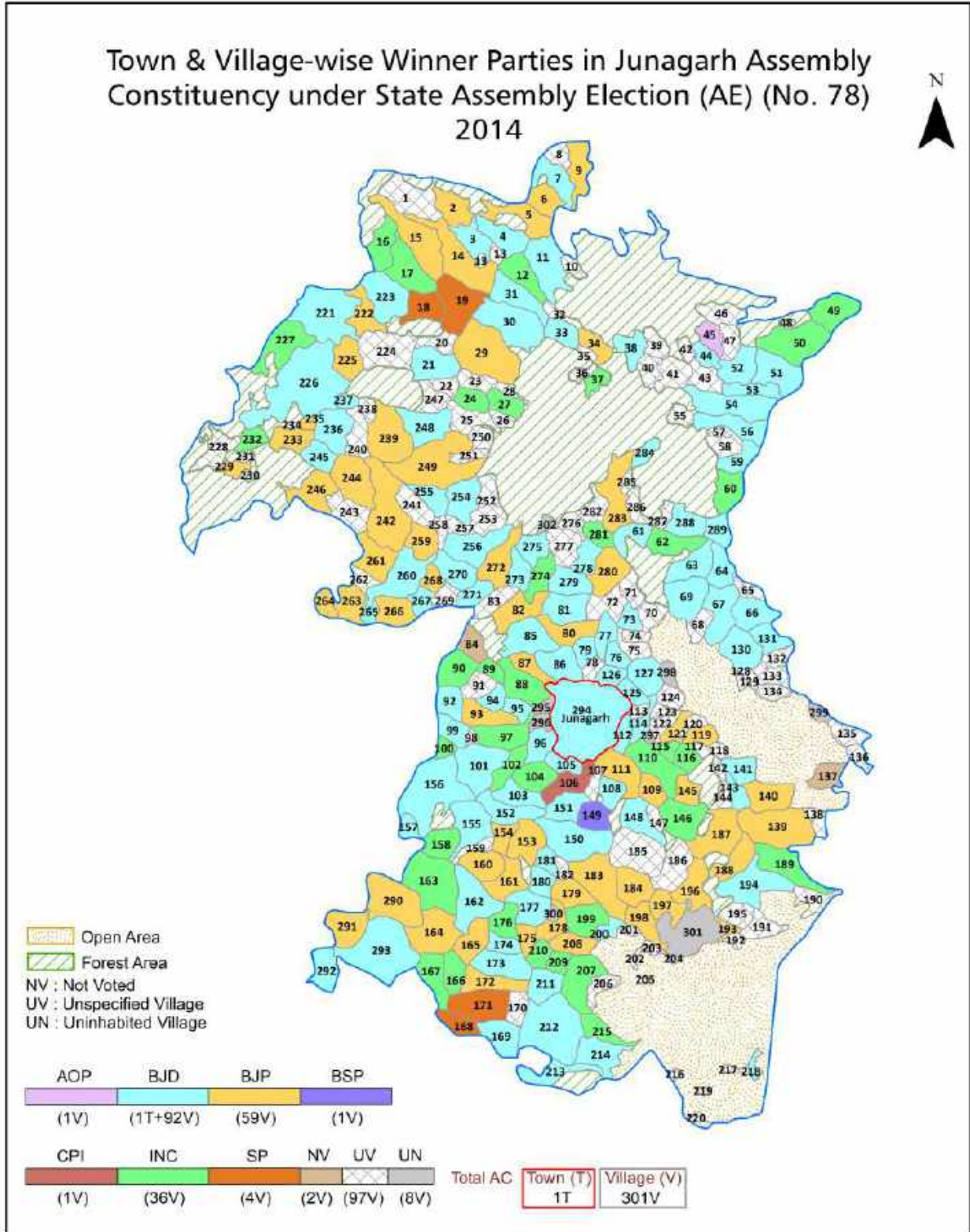
All rights reserved. No part of this book may be reproduced, stored in a retrieval system or transmitted in any form or by any means, mechanical photocopying, photographing, scanning, recording or otherwise without the prior written permission of the publisher. Please refer to Disclaimer at page no. 240 for the use of this publication.

Printed in India

Contents

No.	Particulars	Page No.
	Introduction	
1	Assembly Constituency - (Vidhan Sabha) at a Glance Features of Assembly as per Delimitation Commission of India (2008)	1-2
	Location and Political Maps	
2	Location Map Boundaries of Assembly Constituency - (Vidhan Sabha in District Boundaries of Assembly Constituency under Parliamentary Constituency - (Lok Sabha) Town & Village-wise Winner Parties- 2024-PE, 2024-AE, 2019-PE, 2019-AE, 2014-PE, 2014-AE, 2009-PE and 2009-AE	3-11
	Administrative Setup (2011)	
3	District Sub-district Towns Villages Inhabited Villages Uninhabited Villages Village Panchayat Intermediate Panchayat	12-27
	Demographics (2011)	
4	Population Households Rural/Urban Population Towns and Villages by Population Size Sex Ratio (Total & 0-6 Years) Religious Population Social Population Literacy Rate	28-29
	Electoral Features	
5	Important Dates of Last Elections Held Electors by Gender Service Electors Voters Voters Turnout Polling Stations & Average Number of Electors per Polling Station Electors by Age Group Present Elected Representatives	30-35
	Historical Summary Election Results	
6	Vote Share of Major Parties Winning Margin (Number & Percentage Polarity of Parties Summary Result of Assembly Segment of Parliamentary Elections 2024, 2019, 2014, 2009, 2004 and 1999 Summary Result of Assembly Elections 2024, 2019, 2014, 2009, 2004, 2000, 1995, 1990, 1985, 1980, 1977, 1974, 1971, 1967, 1961 and 1952	36-59
	Polling Station Level Election Results	
7	Name and Number of Polling Station 2024-PE, 2024-AE, 2019-PE, 2019-AE, 2014-PE, 2014-AE, 2009-PE and 2009-AE Polling Station-wise Electors, Voters & Voters Turnout 2024-PE, 2024-AE, 2019-PE, 2019-AE, 2014-PE, 2014-AE, 2009-PE and 2009-AE Polling Station wise Elections Results 2024-PE, 2024-AE, 2019-PE, 2019-AE, 2014-PE, 2014-AE, 2009-PE and 2009-AE	60-219
	Share of Assembly Constituency	
8	Share of Assembly Constituency - (Vidhan Sabha) in State, District and Parliamentary Constituency - (Lok Sabha)	220
	Socio-Economic Amenities (2011)	
9	Access to Administrative Units Agricultural, Manufacturing and Industrial Commodities Demographic Indicators Education Health & Manpower Drinking Water Supply Sanitation Entertainment and Recreations Infrastructure Power Food Allocation Distribution and Marketing of Agriculture Commodities Infrastructure Transport and Road Infrastructure Communication Banking and Financial Services Land Use Irrigation Source	222-236
10	Abbreviation & Sources	237-238
11	Disclaimer	240

Location & Political Map



Administrative Setup

List of Village Panchayat & Intermediate Panchayat (Block) Name - 2011

Village Name	Village Panchayat Name	Intermediate Panchayat Name
Ainli	Uchhala	Golamunda
Amatha	Farang	Golamunda
Amathola(Ambajhola)	Kendupati	Junagarh
Ambadula	Habaspur	Junagarh
Ambamunda	Uchhala	Golamunda
Amguda	Khamarhaladi	Golamunda
Amurlapadar	Naktikani	Golamunda
Antarla	Habaspur	Junagarh
Antarla	Naktikani	Golamunda
Atigaon	Atigaon	Junagarh
Babeguda	Gandamer	Golamunda
Badaldei	Nandol	Junagarh
Badchergaon	Badchergaon	Golamunda
Badjor	Khaliapali	Golamunda
Badtikraguda(2)	Budhidara	Junagarh
Bagabahal	Funda	Golamunda
Bagdori	Nuagaon	Golamunda
Bagha Munda (Bagamunda)	Mahaling	Golamunda
Baghadungri	Atigaon	Junagarh
Baijalpur	Brunda Bahal	Golamunda
Balabhadrapita	Nuagaon	Golamunda
Balarampur(2)	Bankapalash	Junagarh
Baldhiamal	Baldhiamal	Junagarh
Balichhada	Kaliakundal	Junagarh
Balipadar	Kuhura	Golamunda
Banamalipur	Baxitulasipalli	Junagarh
Bandhagaon	Borguda	Golamunda
Bandhanpala (2)	Dasigaon	Junagarh
Bandibasul	Naktiguda	Junagarh

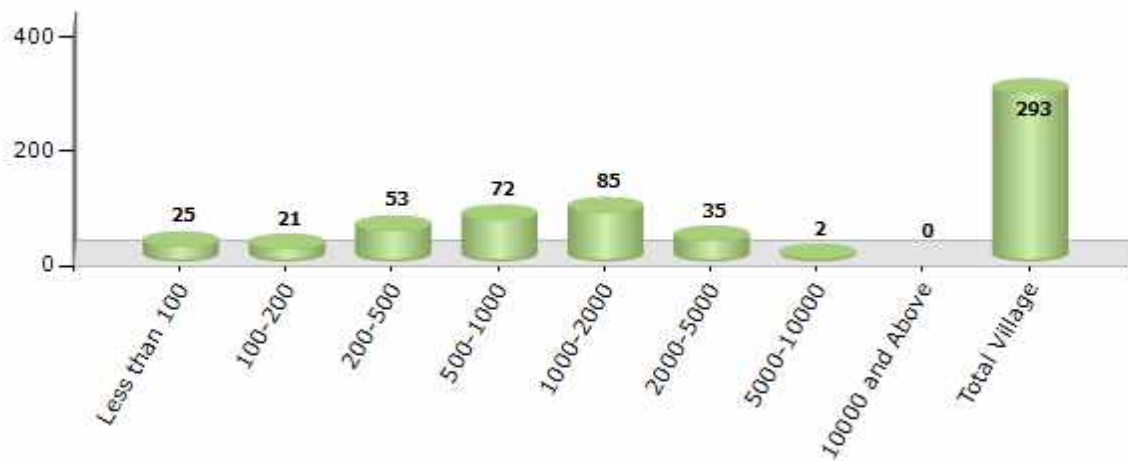
Contd....

Demographic

Number of Villages by Population Size - 2011

Less than 100	100-200	200-500	500-1000	1000-2000	2000-5000	5000-10000	10000 and Above	Total Village
25	21	53	72	85	35	2	0	293

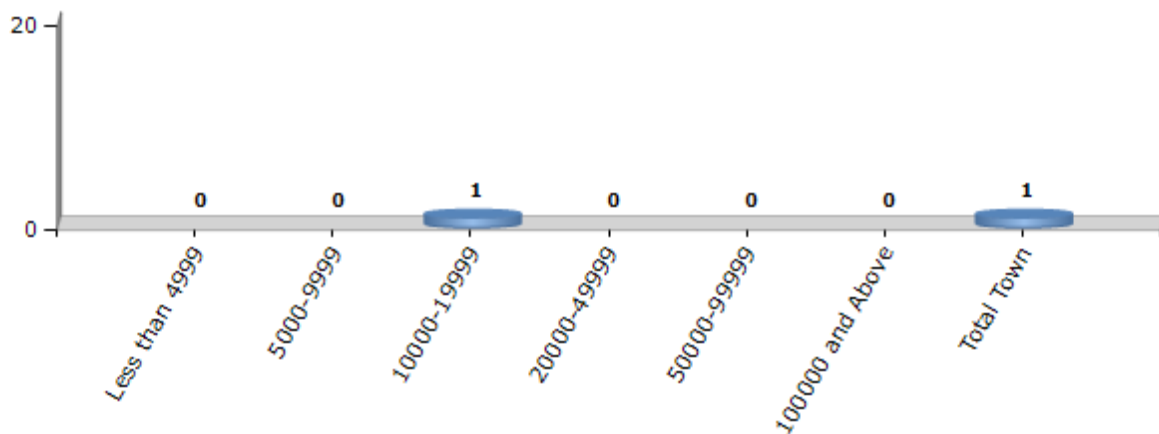
Number of Villages by Population Size - 2011



Number of Towns by Population Size - 2011

Less than 4999	5000-9999	10000-19999	20000-49999	50000-99999	100000 and Above	Total Town
0	0	1	0	0	0	1

Number of Towns by Population Size - 2011

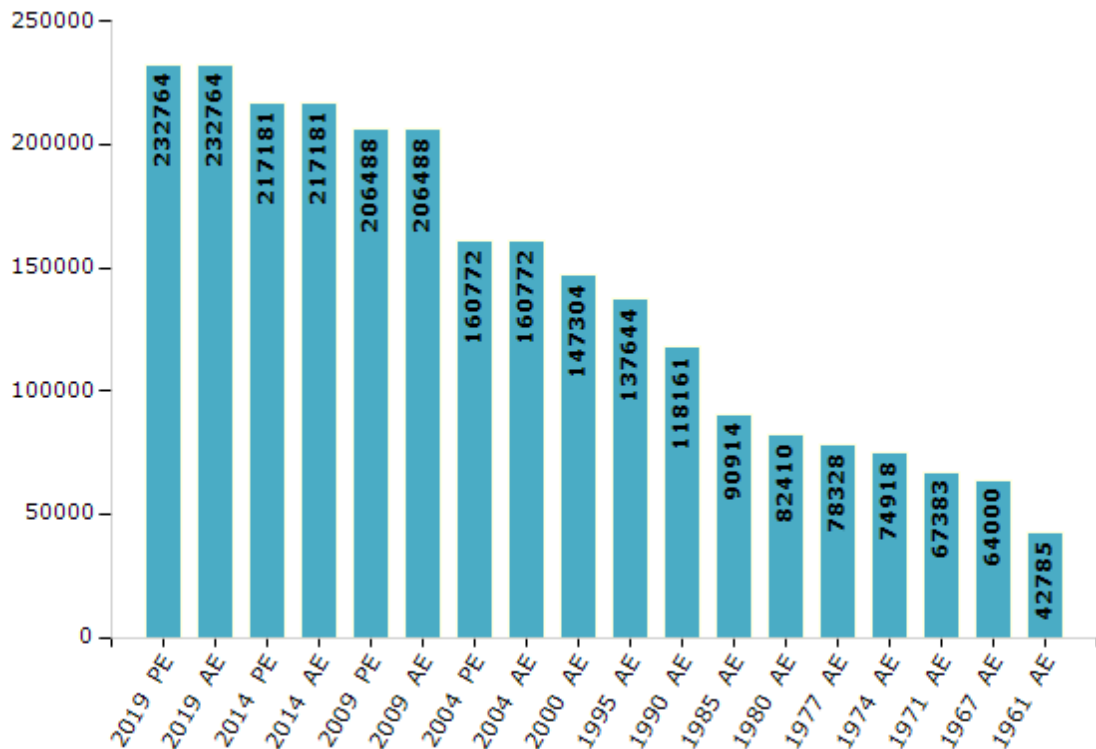


Electoral Features

Electors by Male & Female

Year	Male	Female	Others	Total	Year	Male	Female	Others	Total
2019 PE	118907	113852	5	232764	1990 AE	61125	57036	-	118161
2019 AE	118907	113852	5	232764	1985 AE	44297	46617	-	90914
2014 PE	111352	105828	1	217181	1980 AE	40757	41653	-	82410
2014 AE	111352	105828	1	217181	1977 AE	38281	40047	-	78328
2009 PE	104241	102247	-	206488	1974 AE	36455	38463	-	74918
2009 AE	104241	102247	-	206488	1971 AE	33715	33668	-	67383
2004 PE	80686	80086	-	160772	1967 AE	64000	0	-	64000
2004 AE	80686	80086	-	160772	1961 AE	42785	0	-	42785
2000 AE	74385	72919	-	147304	1957 AE	-	-	-	-
1999 PE	-	-	-	-	1952 AE	-	-	-	-
1995 AE	70064	67580	-	137644					

Number of Electors



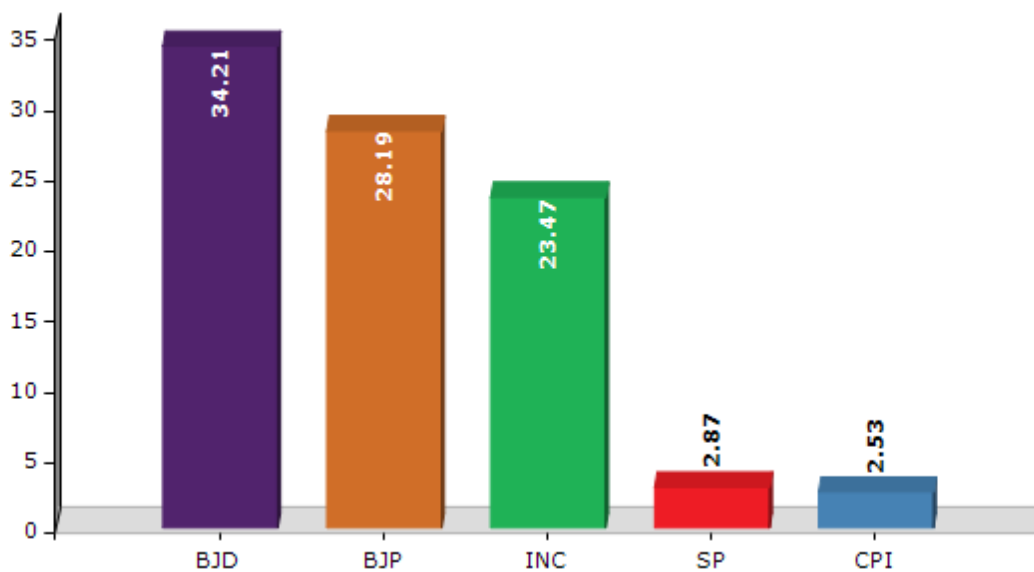
Note : AE : Assembly Election, PE : Assembly Segment of Parliamentary Election

Historical Summary Election Results

Summary Result of Assembly Election - 2014

Candidate Name	Party	Votes	Votes %
Dibya Sankar Mishra	BJD	56443	34.21
Anil Kumar Singh Deo	BJP	46498	28.19
Gobardhan Dash	INC	38715	23.47
Hara Prasad Bag	SP	4731	2.87
Damodar Behera	CPI	4166	2.53
Jatish Chandra Mohanty	SAMO	2144	1.3
Umakanta Tandi	AOP	1868	1.13
Manmath Benupani	BSP	1800	1.09
Sudhanidhi Naik	IND	1498	0.91
Chinmaya Behera	AAP	1413	0.86
Rajesh Kumar Mund	KS	822	0.5
Suresh Chandan	BMUP	818	0.5
Sobhaban Roul	RPI(A)	657	0.4
Pradeep Kumar Padhi	OJM	653	0.4
	NOTA	2747	1.67

Votes Percentage of Top Parties - 2014



Polling Station Level Election Results

Number and Name of Polling Stations (PS) (2019 AE)

Number of Polling Stations	Name of Polling Stations	Number of Polling Stations	Name of Polling Stations
1	Kendumundi	22	Tumura
2	Kantamal	23	Grindol
3	Kantamal	24	Grindol-2
4	Kuhura	25	Tingipadar
5	Bordi	26	Chapria 1
6	Bhatipada	27	Chapria 2
7	Betarajapali	28	Turechhada
8	Kodobhata	29	Sanacheragan 1
9	Mahalinga-1	30	Sanacheragan 2
10	Mahalinga-3	31	Kegan
11	Mahalinga-2	32	Sinapali
12	Makaraguda	33	Lanji 1
13	Makaraguda	34	Lanji 2
14	Bagamunda	35	Padampur
15	Leter	36	Nuagan
16	Leter	37	Karanjakot
17	Udesrunga	38	Bagadori
18	Udesrunga	39	Sialjodi-I
19	Dangariguda	40	Sialjodi-Ii
20	Manjhari-1	41	Chahaka
21	Manjhari-2	42	Kuturabahali

Contd....

Polling Station Level Election Results

Polling Station-wise Votes Secured by Overall Top Five Parties in Junagarh Assembly in Assembly Election (AE) under Kalahandi Parliamentary Constituency in Odisha (2019)

Number of Polling Station	Winner - Ditya Shankar Mishra (BJD)	Runner-up - Manoj Kumar Meher (BJP)	3rd - Anil Kumar Singh Deo (INC)	4th - Shiba Hati (SP)	5th - Jatindra Sahu (APoI)	NOTA	Other	Total Votes Secured
36	152	206	90	3	2	2	8	463
37	257	74	51	2	6	12	4	406
38	338	216	111	4	9	19	15	712
39	150	274	95	9	14	7	9	558
40	207	231	133	7	9	3	16	606
41	287	311	99	3	6	13	10	729
42	185	210	115	3	1	4	4	522
43	185	165	295	4	15	6	11	681
44	107	148	94	7	8	18	21	403
45	178	204	200	30	6	10	13	641
46	299	333	144	4	16	12	21	829
47	109	89	151	3	8	4	13	377
48	245	239	156	12	6	14	10	682
49	360	196	228	11	4	7	8	814
50	121	54	30	2	3	11	6	227
51	275	320	180	0	3	10	12	800
52	369	196	179	19	5	10	6	784
53	148	138	147	4	2	12	6	457
54	279	305	172	7	15	10	12	800
55	249	165	41	3	7	10	7	482
56	271	242	289	7	4	4	8	825
57	154	69	245	2	6	5	7	488
58	670	169	123	4	6	19	11	1002
59	475	294	105	3	9	10	30	926
60	396	270	52	5	9	10	24	766
61	331	104	19	4	3	4	3	468
62	362	69	105	5	5	6	5	557
63	184	106	56	4	2	4	2	358
64	336	233	74	2	4	8	12	669
65	362	428	58	2	4	12	19	885
66	211	69	137	2	2	6	39	466
67	350	235	193	6	8	14	63	869
68	235	247	57	3	8	5	78	633
69	610	222	129	3	7	9	20	1000
70	227	37	108	2	4	0	6	384

Contd....

Polling Station Level Election Results

Winner, Runner-up and 3rd Party Position & Winning Margin According to Polling Stations in Junagarh Assembly in Assembly Election (AE) under Kalahandi Parliamentary Constituency in Odisha (2019)

Polling Station Number	Winner Party	Winner Votes (%)	Runner-up Party	Runner-up Votes (%)	Winning Margin Votes (%)	Third Party	Third Party Votes (%)	Other Votes (%)
71	BJD	272 (53.33)	INC	128 (25.1)	144 (28.23)	BJP	72 (14.12)	38 (7.45)
72	BJP	251 (43.5)	BJD	220 (38.13)	31 (5.37)	INC	55 (9.53)	51 (8.84)
73	BJD	345 (57.79)	BJP	147 (24.62)	198 (33.17)	INC	56 (9.38)	49 (8.21)
74	BJD	518 (58.2)	BJP	215 (24.16)	303 (34.04)	INC	113 (12.7)	44 (4.94)
75	BJP	582 (53.94)	BJD	343 (31.79)	239 (22.15)	INC	101 (9.36)	53 (4.91)
76	BJD	391 (44.79)	BJP	323 (37)	68 (7.79)	INC	114 (13.06)	45 (5.15)
77	BJD	341 (51.05)	BJP	266 (39.82)	75 (11.23)	INC	21 (3.14)	40 (5.99)
78	BJD	359 (56.8)	BJP	182 (28.8)	177 (28)	INC	69 (10.92)	22 (3.48)
79	BJD	267 (49.44)	BJP	160 (29.63)	107 (19.81)	INC	89 (16.48)	24 (4.44)
80	BJD	344 (59.41)	BJP	205 (35.41)	139 (24)	INC	15 (2.59)	15 (2.59)
81	INC	263 (40.84)	BJD	259 (40.22)	4 (0.62)	BJP	87 (13.51)	35 (5.43)
82	BJD	248 (48.44)	BJP	161 (31.45)	87 (16.99)	INC	67 (13.09)	36 (7.03)
83	BJD	307 (50.66)	BJP	143 (23.6)	164 (27.06)	INC	132 (21.78)	24 (3.96)
84	NV	NV (NV)	NV	NV (NV)	NV (NV)	NV	NV (NV)	NV (NV)
85	BJD	271 (75.91)	BJP	48 (13.45)	223 (62.46)	INC	29 (8.12)	9 (2.52)
86	BJD	283 (35.11)	BJP	247 (30.65)	36 (4.46)	INC	216 (26.8)	60 (7.44)
87	BJD	425 (48.52)	BJP	314 (35.84)	111 (12.68)	INC	108 (12.33)	29 (3.31)
88	BJD	249 (38.37)	INC	191 (29.43)	58 (8.94)	BJP	175 (26.96)	34 (5.24)
89	BJD	315 (39.42)	BJP	299 (37.42)	16 (2)	INC	156 (19.52)	29 (3.63)
90	BJD	151 (40.92)	BJP	120 (32.52)	31 (8.4)	INC	82 (22.22)	16 (4.34)
91	BJD	273 (60)	BJP	127 (27.91)	146 (32.09)	INC	34 (7.47)	21 (4.62)
92	BJD	538 (52.54)	BJP	358 (34.96)	180 (17.58)	INC	78 (7.62)	50 (4.88)
93	BJD	498 (51.88)	BJP	313 (32.6)	185 (19.28)	INC	99 (10.31)	50 (5.21)
94	BJD	284 (54.62)	BJP	132 (25.38)	152 (29.24)	INC	80 (15.38)	24 (4.62)
95	BJD	342 (53.02)	BJP	243 (37.67)	99 (15.35)	INC	27 (4.19)	33 (5.12)
96	BJD	512 (49.66)	BJP	397 (38.51)	115 (11.15)	INC	90 (8.73)	32 (3.1)
97	BJD	487 (56.96)	BJP	276 (32.28)	211 (24.68)	INC	53 (6.2)	39 (4.56)
98	BJD	190 (43.18)	INC	130 (29.55)	60 (13.63)	BJP	86 (19.55)	34 (7.73)
99	BJD	444 (48.95)	BJP	335 (36.93)	109 (12.02)	INC	102 (11.25)	26 (2.87)
100	BJD	283 (54.01)	BJP	165 (31.49)	118 (22.52)	INC	51 (9.73)	25 (4.77)
101	BJP	400 (48.48)	INC	235 (28.48)	165 (20)	BJD	153 (18.55)	37 (4.48)
102	BJD	411 (43.77)	BJP	354 (37.7)	57 (6.07)	INC	104 (11.08)	70 (7.45)
103	BJP	395 (54.41)	BJD	159 (21.9)	236 (32.51)	INC	151 (20.8)	21 (2.89)
104	BJD	328 (45.62)	BJP	264 (36.72)	64 (8.9)	INC	81 (11.27)	46 (6.4)
105	INC	205 (38.97)	BJD	158 (30.04)	47 (8.93)	BJP	71 (13.5)	92 (17.49)

Contd....

Socio-Economic Amenities - Rural

Access to Education Facilities

Particulars	Number of Villages (% of Population)				
	Available	Not Available	If Not Available (Distance of Nearest Facility)		
			A	B	C
Govt. Primary School	268 (99)	25 (1)	24 (1)	1 (0)	0 (0)
Private Primary School	26 (18)	267 (82)	0 (0)	0 (0)	0 (0)
Govt. Middle School	110 (60)	183 (40)	76 (15)	41 (6)	0 (0)
Private Middle School	32 (19)	261 (81)	40 (9)	9 (1)	0 (0)
Govt. Secondary School	42 (29)	251 (71)	81 (24)	21 (4)	0 (0)
Private Secondary School	22 (15)	271 (85)	83 (22)	48 (9)	0 (0)
Govt. Senior Secondary School	2 (3)	291 (97)	14 (6)	26 (10)	38 (12)
Private Senior Secondary School	6 (3)	287 (97)	39 (14)	69 (26)	100 (27)
Govt. Arts and Science Degree College	1 (2)	292 (98)	4 (3)	14 (4)	46 (18)
Private Arts and Science Degree College	7 (4)	286 (96)	27 (10)	72 (25)	122 (35)
Govt. Engineering College	0 (0)	293 (100)	5 (4)	5 (2)	283 (94)
Private Engineering College	0 (0)	293 (100)	0 (0)	0 (0)	0 (0)
Govt. Medicine College	0 (0)	293 (100)	9 (2)	21 (6)	234 (82)
Private Medicine College	0 (0)	293 (100)	0 (0)	0 (0)	0 (0)
Govt. Management Institute	0 (0)	293 (100)	0 (0)	0 (0)	293 (100)
Private Management Institute	0 (0)	293 (100)	0 (0)	0 (0)	0 (0)
Govt. Polytechnic	0 (0)	293 (100)	0 (0)	1 (0)	21 (6)
Private Polytechnic	0 (0)	293 (100)	0 (0)	2 (0)	8 (4)
Govt. Vocational Training School/ITI	2 (1)	291 (99)	0 (0)	6 (2)	237 (78)
Private Vocational Training School/ITI	1 (1)	292 (99)	0 (0)	1 (0)	21 (10)
Govt. Non Formal Training Centre	0 (0)	293 (100)	0 (0)	1 (0)	49 (17)
Private Non Formal Training Centre	0 (0)	293 (100)	0 (0)	4 (1)	44 (13)
Govt. School For Disabled	0 (0)	293 (100)	0 (0)	2 (0)	234 (76)
Private School For Disabled	0 (0)	293 (100)	0 (0)	0 (0)	19 (9)
Government Others	1 (1)	292 (99)	1 (0)	0 (0)	8 (2)
Private Others	2 (1)	291 (99)	0 (0)	0 (0)	0 (0)

Note : Distance A : Less than 5 km; B : Between 5-10 km; C : 10+ km.; Source : Data Analysis is based on 2011 Census.

DISCLAIMER

The Terms of Use and Disclaimer of Datanet India Private Limited (hereinafter referred to as "Datanet") for use of this analysis report of **Junagarh Assembly Constituency (Junagarh Vidhan Sabha)** :-

1. **Assembly Factbook™** is a Registered Trade Mark owned by Datanet.
2. All the maps are sketched and graphical representation only and have not been drawn to the scale and also not to represent the actual geographical area or boundary of the unit.
3. The data for the aforesaid analysis is based on authentic sources and has been culled from the various publications of Census, CSO and NSSO for district and block level data, various central and state government departments, Central & State Elections Commissions and the concerned Returning Officers' releases, Electoral Rolls, Election results and allied publications, internal assessment, surveys, estimates and analysis. Therefore, certain adjustment of data at micro level may have been done to arrive closer to the macro data.
4. Data have been provided on an "As Is" and "As AVAILABLE" basis
5. The colours shown in the maps or diagram and charts of a particular party, alliance or AC are indicative and do not represent them.
6. This publication which includes maps, sheets, graphs and data would be the property under copyright of Datanet only. The user may use these for its internal study, analysis and research purposes. It's public display, re-selling or any commercial uses by the user are not allowed.
7. Datanet has taken due care and caution in compilation and processing of data and allied information, but does not guarantee the accuracy, adequacy or completeness of any information/analysis and will be not responsible for any errors or omissions or for the results obtained from the use of such information/analysis.
8. All the contents for the publication have been culled from various authentic sources and Datanet reasonably believes such sources to be reliable, but does not make any representations, express or implied as to the accuracy or fitness of use of such information. The information or contents of the information/analysis do not constitute advice and should not be relied upon in making (or refraining from making) any decision. Any reliance placed upon the information provided by Datanet is the sole responsibility and strictly at the user's risk.
9. In no event will Datanet be liable for any damages (including, without limitation, damages for loss of business projects, or loss of profits) arising in contract, tort or otherwise from the use of or inability to use any of its contents, or from any action taken (or refrained from being taken) as a result of using the analysis or any of its contents. Datanet its directors, owners, editors, officials, employees, distributor and agents or any associate will not be liable for any errors in the information contained or any consequences arising from the use of the contents of the provided information/analysis.
10. If any provision of these terms and conditions is held invalid or illegal or unenforceable for any reason by any court of competent jurisdiction, such provision shall be severed and the remainder of provisions of the terms and conditions shall continue in full force and effect as if the Term of Use had been executed with the invalid, illegal or unenforceable provision eliminated.
11. If there are any discrepancies in the information provided, please bring it to attention of Datanet for suitable rectification measures.

**Buy Online This Complete Book At
Datanet India eBooks Store**

www.indiastatpublications.com

or go directly at

[http://www.indiastatpublications.com/
Assembly_factbook/Odisha/Kalahandi/ Junagarh](http://www.indiastatpublications.com/Assembly_factbook/Odisha/Kalahandi/Junagarh)

 **india**stat**elections**

ISBN : 978-81-6313-240-1

