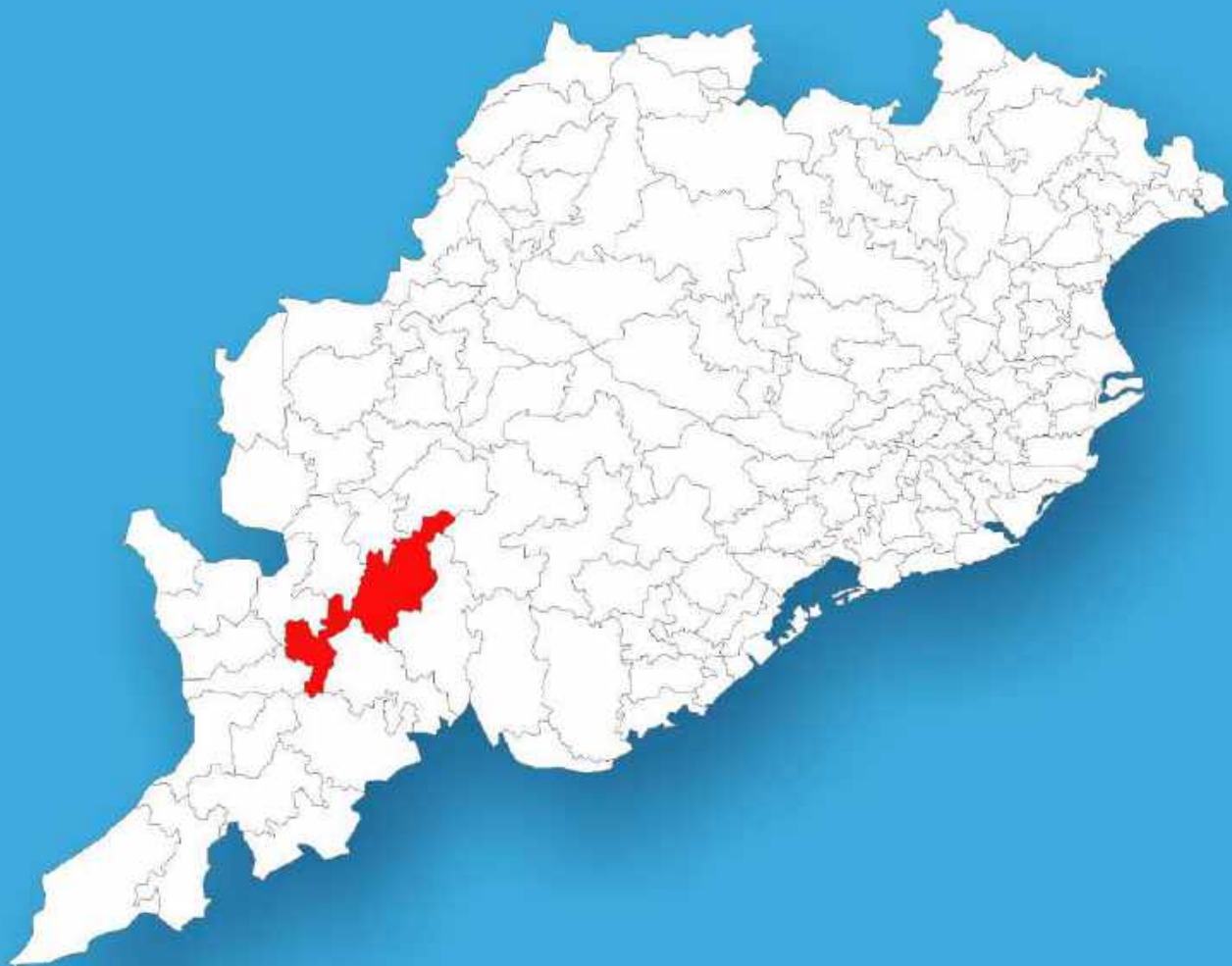




Odisha

Assembly Factbook™

Lanjigarh Assembly Constituency



Key Electoral Data of Lanjigarh
Assembly Constituency (Vidhan Sabha)

Odisha

Assembly Factbook™

Lanjigarh Assembly Constituency



Lanjigarh Vidhan Sabha

Editor & Director

Dr. R.K. Thukral

Research Editor

Dr. Shafeeq Rahman

Compiled, Researched and Published by Datanet India Pvt. Ltd.

D-100, 1st Floor,

Okhla Industrial Area, Phase-I,
New Delhi- 110020.

Ph.: 91-11- 43580781-84

Email : support@indiastatpublications.com

Website : www.indiastatelections.com

Online Book Store :

www.indiastatpublications.com

Report No. : AFB/OD-077-0125

ISBN : 978-93-5313-262-0

First Edition : January, 2018

Eighth Updated Edition : January, 2025

Price : Rs. 11500/-

US\$ 310

© Datanet India Pvt. Ltd.

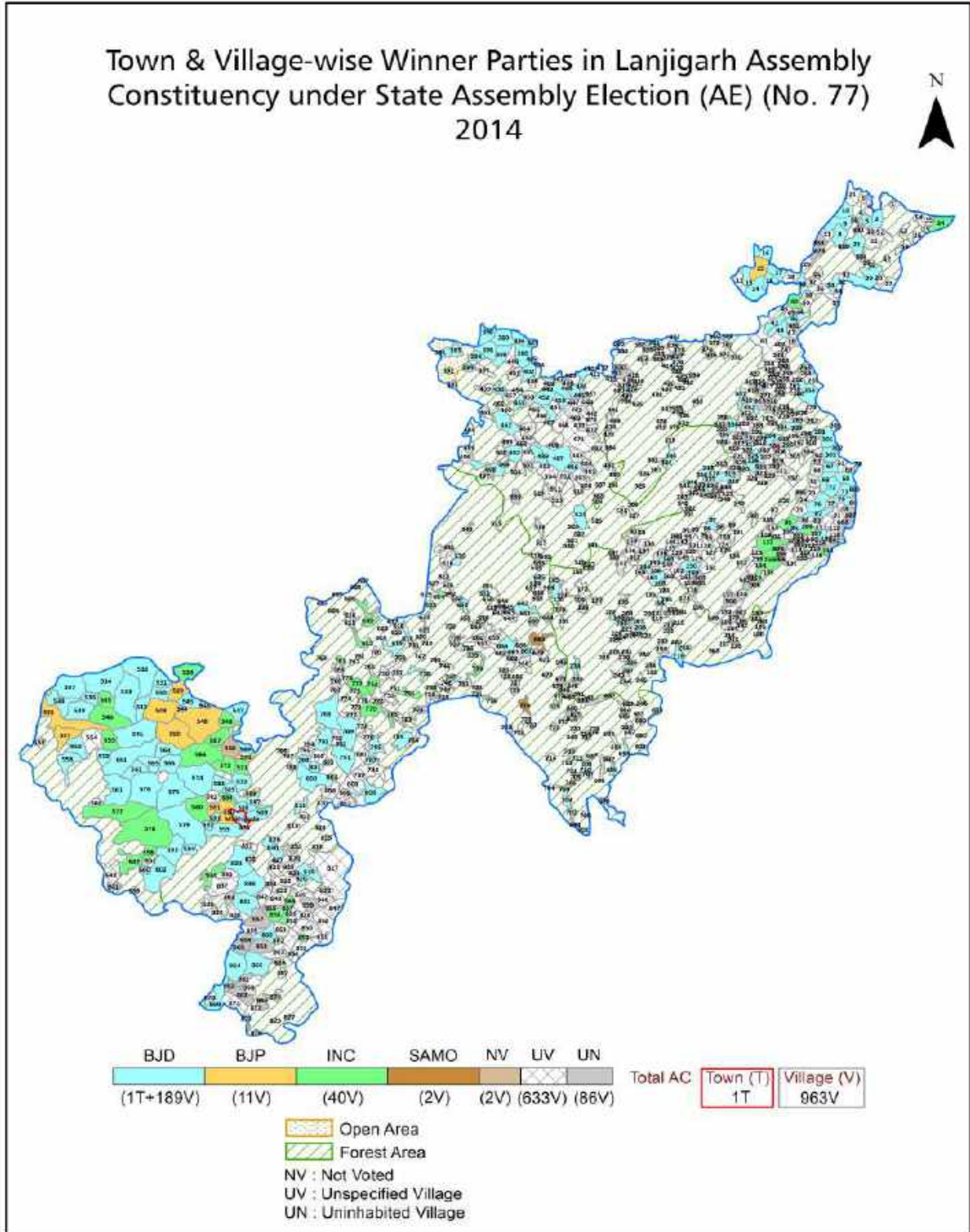
All rights reserved. No part of this book may be reproduced, stored in a retrieval system or transmitted in any form or by any means, mechanical photocopying, photographing, scanning, recording or otherwise without the prior written permission of the publisher. Please refer to Disclaimer at page no. 270 for the use of this publication.

Printed in India

Contents

No.	Particulars	Page No.
	Introduction	
1	Assembly Constituency - (Vidhan Sabha) at a Glance Features of Assembly as per Delimitation Commission of India (2008)	1-2
	Location and Political Maps	
2	Location Map Boundaries of Assembly Constituency - (Vidhan Sabha in District Boundaries of Assembly Constituency under Parliamentary Constituency - (Lok Sabha) Town & Village-wise Winner Parties- 2024-PE, 2024-AE, 2019-PE, 2019-AE, 2014-PE, 2014-AE, 2009-PE and 2009-AE	3-11
	Administrative Setup (2011)	
3	District Sub-district Towns Villages Inhabited Villages Uninhabited Villages Village Panchayat Intermediate Panchayat	12-55
	Demographics (2011)	
4	Population Households Rural/Urban Population Towns and Villages by Population Size Sex Ratio (Total & 0-6 Years) Religious Population Social Population Literacy Rate	56-57
	Electoral Features	
5	Important Dates of Last Elections Held Electors by Gender Service Electors Voters Voters Turnout Polling Stations & Average Number of Electors per Polling Station Electors by Age Group Present Elected Representatives	58-63
	Historical Summary Election Results	
6	Vote Share of Major Parties Winning Margin (Number & Percentage Polarity of Parties Summary Result of Assembly Segment of Parliamentary Elections 2024, 2019, 2014 and 2009 Summary Result of Assembly Elections 2024, 2019, 2014 and 2009	64-73
	Polling Station Level Election Results	
7	Name and Number of Polling Station 2024-PE, 2024-AE, 2019-PE, 2019-AE, 2014-PE, 2014-AE, 2009-PE and 2009-AE Polling Station-wise Electors, Voters & Voters Turnout 2024-PE, 2024-AE, 2019-PE, 2019-AE, 2014-PE, 2014-AE, 2009-PE and 2009-AE Polling Station wise Elections Results 2024-PE, 2024-AE, 2019-PE, 2019-AE, 2014-PE, 2014-AE, 2009-PE and 2009-AE	74-249
	Share of Assembly Constituency	
8	Share of Assembly Constituency - (Vidhan Sabha) in State, District and Parliamentary Constituency - (Lok Sabha)	250
	Socio-Economic Amenities (2011)	
9	Access to Administrative Units Agricultural, Manufacturing and Industrial Commodities Demographic Indicators Education Health & Manpower Drinking Water Supply Sanitation Entertainment and Recreations Infrastructure Power Food Allocation Distribution and Marketing of Agriculture Commodities Infrastructure Transport and Road Infrastructure Communication Banking and Financial Services Land Use Irrigation Source	252-266
10	Abbreviation & Sources	267-268
11	Disclaimer	270

Location & Political Map



Administrative Setup

List of Village Panchayat & Intermediate Panchayat (Block) Name - 2011

Village Name	Village Panchayat Name	Intermediate Panchayat Name
Adaranga	Sagada	Bhawanipatna
Adri	Odri	Thuamul-Rampur
Aluaguda	Sindhipadar	Thuamul-Rampur
Amajhari	Kamarda	Lanjigarh
Amapadar	Bhatangapadar	Lanjigarh
Amathaguda	Kaniguma	Thuamul-Rampur
Amba balasa	Jugsaipatna	Bhawanipatna
Ambaguda	Trilochanpur	Lanjigarh
Ambajhola	Nakrundi	Thuamul-Rampur
Ambajor	Sagada	Bhawanipatna
Ambapada	Risigaon	Bhawanipatna
Amthaguda	Karlapat	Thuamul-Rampur
Anajore	Kamarda	Lanjigarh
Anlabhata	Anla Bhata	Jayapatna
Arakhapedi	Kaniguma	Thuamul-Rampur
Asurguda	Bengaon	Lanjigarh
Atagarla	Sagada	Bhawanipatna
Atangaguda	Duarsuni	Bhawanipatna
Atigaon	Paik-Kendumundi	Jayapatna
Babubundel	Gopalpur	Thuamul-Rampur
Babupadar	Lanjeer	Lanjigarh
Bachaka	Kankutru	Lanjigarh
Bad Sukuli	Mahulpatna	Thuamul-Rampur
Badabag (Bandabag)	Maligaon	Thuamul-Rampur
Badabanigaon	Bandhapari	Lanjigarh
Badabatua	Gunduri	Lanjigarh
Badabundel	Thuamul Rampur	Thuamul-Rampur
Badachhatrang	Badchhatrang	Thuamul-Rampur
Badadarla	Dumerpadar	Thuamul-Rampur

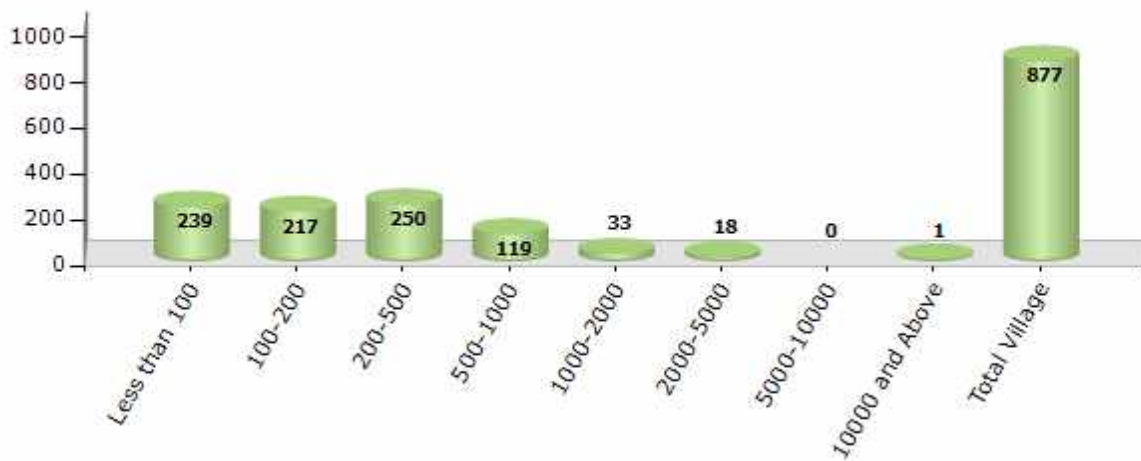
Contd....

Demographic

Number of Villages by Population Size - 2011

Less than 100	100-200	200-500	500-1000	1000-2000	2000-5000	5000-10000	10000 and Above	Total Village
239	217	250	119	33	18	0	1	877

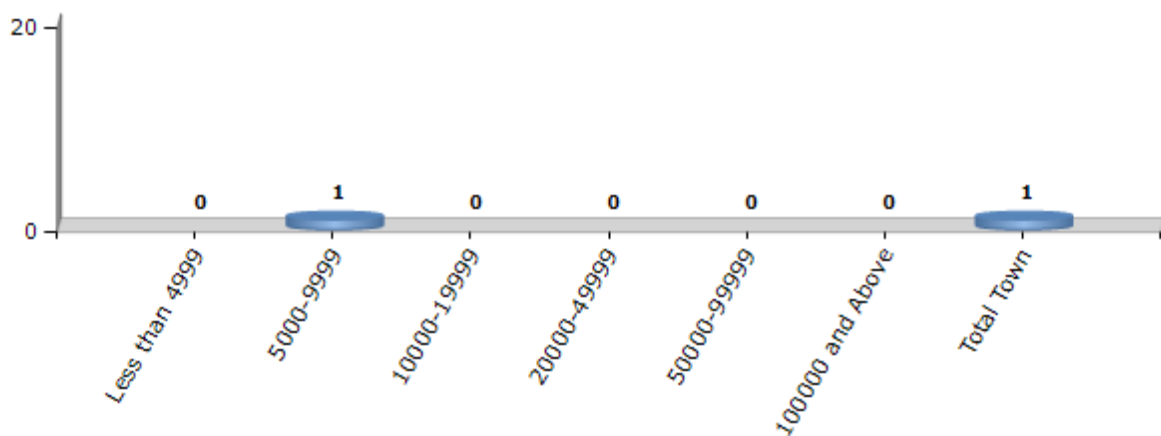
Number of Villages by Population Size - 2011



Number of Towns by Population Size - 2011

Less than 4999	5000-9999	10000-19999	20000-49999	50000-99999	100000 and Above	Total Town
0	1	0	0	0	0	1

Number of Towns by Population Size - 2011

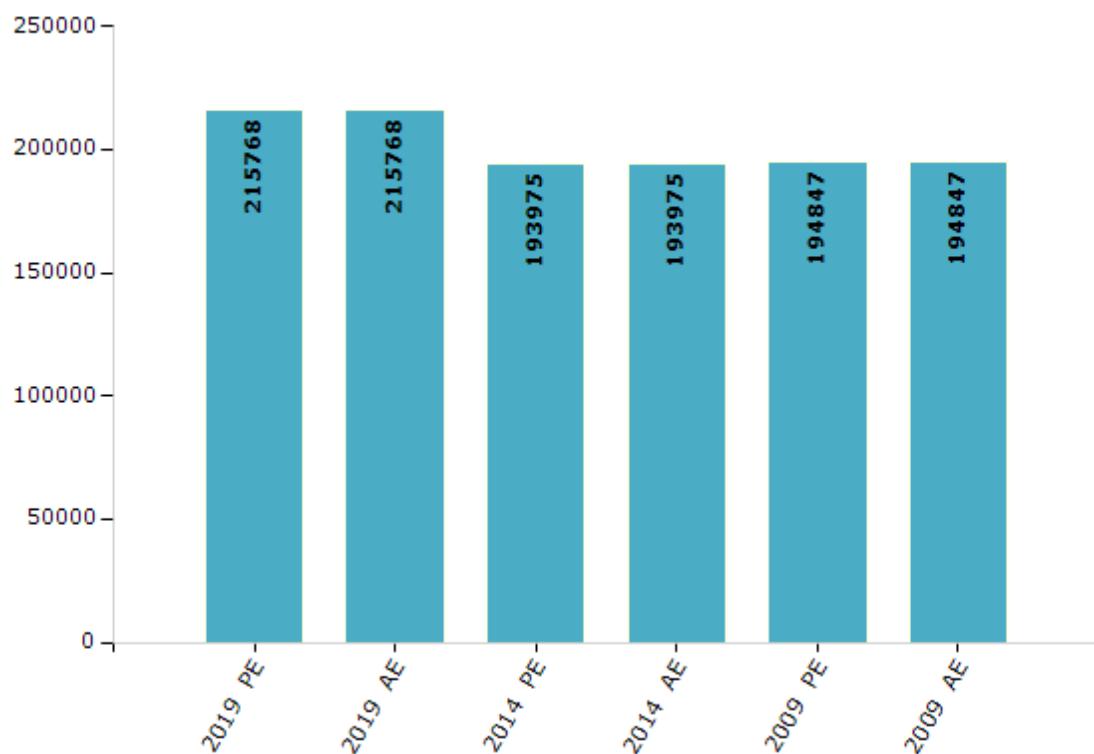


Electoral Features

Electors by Male & Female

Year	Male	Female	Others	Total	Year	Male	Female	Others	Total
2019 PE	106130	109615	23	215768	1990 AE	-	-	-	-
2019 AE	106130	109615	23	215768	1985 AE	-	-	-	-
2014 PE	96567	97396	12	193975	1980 AE	-	-	-	-
2014 AE	96567	97396	12	193975	1977 AE	-	-	-	-
2009 PE	95633	99214	-	194847	1974 AE	-	-	-	-
2009 AE	95633	99214	-	194847	1971 AE	-	-	-	-
2004 PE	-	-	-	-	1967 AE	-	-	-	-
2004 AE	-	-	-	-	1961 AE	-	-	-	-
2000 AE	-	-	-	-	1957 AE	-	-	-	-
1999 PE	-	-	-	-	1952 AE	-	-	-	-
1995 AE	-	-	-	-					

Number of Electors



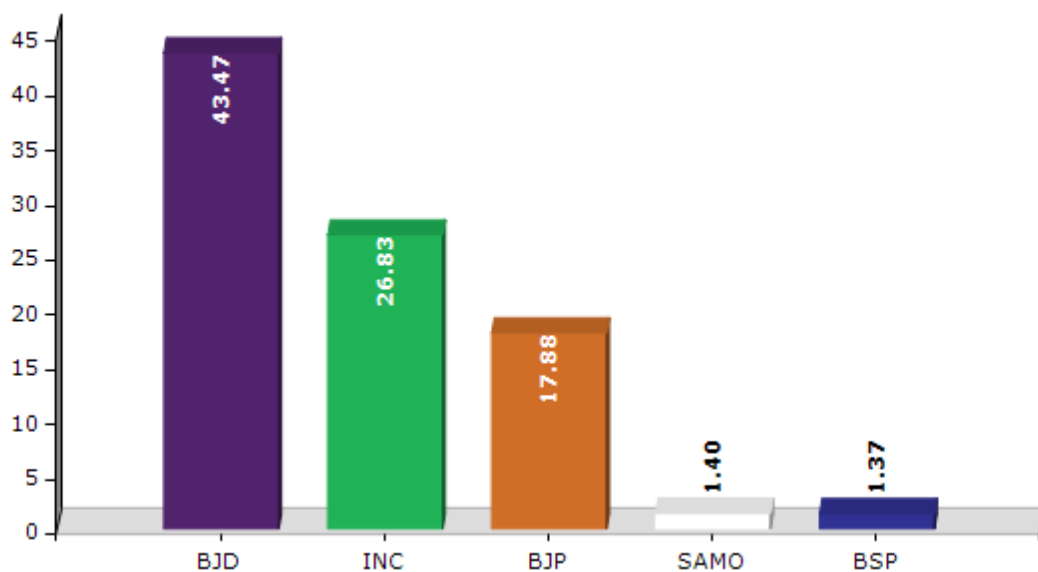
Note : AE : Assembly Election, PE : Assembly Segment of Parliamentary Election

Historical Summary Election Results

Summary Result of Assembly Election - 2014

Candidate Name	Party	Votes	Votes %
Balabhadra Majhi	BJD	65033	43.47
Pradip Kumar Dishari	INC	40138	26.83
Bijaya Dishari	BJP	26744	17.88
Mahendra Kumar Majhi	SAMO	2094	1.4
Sobha Majhi	BSP	2045	1.37
Lal Bahadur Jani	AAP	1771	1.18
Chandramani Naik	BMUP	1603	1.07
Suresh Majhi	SP	1313	0.88
Kiran Kumar Majhi	AOP	1204	0.8
Bishnu Charan Bhoi	OJM	1099	0.73
Sanatan Majhi	CPI(ML)(L)	1091	0.73
Kabi Majhi	SKD	674	0.45
	NOTA	4782	3.2

Votes Percentage of Top Parties - 2014



Polling Station Level Election Results

Number and Name of Polling Stations (PS) (2019 AE)

Number of Polling Stations	Name of Polling Stations	Number of Polling Stations	Name of Polling Stations
1	Rangiguda	22	Damodarpur
2	Kutrukhamar-2	23	Kenduguda
3	Kapsara	24	Chanher
4	Kutrukhamat	25	Dhanrabhata
5	Badili	26	Pokharighat
6	Malgaon	27	Dakibundel
7	Malgaon	28	Sargiguda
8	Singjharan	29	Sagada-1
9	Phatapada	30	Sagada-2
10	Karлакote	31	Labanyasar
11	Kandhbandhopala	32	Jugsaipatna
12	Risigan	33	Manaska
13	Kasakendu	34	Salpanga
14	Ampada	35	Titijhola
15	Tikrapada	36	Bhatangpadar
16	Atanguda	37	Bhatangpadar
17	Musiguda	38	Gundri
18	Jamuna Sagar	39	Odostala
19	Duarsuni-1	40	Karkata
20	Duarsuni-2	41	Kadamguda
21	Chandli	42	Khiksabhata

Contd....

Polling Station Level Election Results

Polling Station-wise Votes Secured by Overall Top Five Parties in Lanjigarh Assembly in Assembly Election (AE) under Kalahandi Parliamentary Constituency in Odisha (2019)

Number of Polling Station	Winner - Pradip Kumar Dishari (BJD)	Runner-up - Sibaji Majhi (INC)	3rd - Ramesh Chandra Majhi (BJP)	4th - Suresh Majhi (BSP)	5th - Raj Kishor Dalpati (BMUP)	NOTA	Other	Total Votes Secured
36	191	190	288	12	11	28	23	743
37	117	97	107	16	9	42	42	430
38	333	350	99	15	5	6	15	823
39	193	73	67	9	12	16	34	404
40	311	55	38	13	10	9	31	467
41	257	180	112	8	2	7	13	579
42	112	161	74	13	2	9	16	387
43	158	211	175	1	3	5	5	558
44	151	299	98	7	4	11	11	581
45	92	136	153	5	4	15	12	417
46	131	189	83	8	5	2	3	421
47	98	121	88	3	9	7	5	331
48	132	330	244	4	5	3	13	731
49	91	103	113	5	1	2	6	321
50	192	164	257	3	0	2	2	620
51	132	97	215	1	3	1	9	458
52	112	154	166	5	3	2	6	448
53	163	112	89	6	1	2	4	377
54	146	196	100	18	5	8	12	485
55	102	96	118	7	2	8	9	342
56	46	181	43	6	1	3	7	287
57	155	103	95	8	5	22	19	407
58	304	153	94	1	2	3	9	566
59	141	284	131	5	10	11	17	599
60	177	206	111	5	1	4	6	510
61	128	91	78	5	2	6	5	315
62	291	113	156	18	5	21	19	623
63	219	414	116	26	13	32	33	853
64	365	207	232	5	6	10	14	839
65	346	434	175	14	7	12	10	998
66	189	296	146	11	8	6	31	687
67	197	173	168	9	5	12	11	575
68	139	655	76	23	7	4	21	925
69	166	274	266	16	9	16	25	772
70	139	199	179	13	13	24	24	591

Contd....

Polling Station Level Election Results

Winner, Runner-up and 3rd Party Position & Winning Margin According to Polling Stations in Lanjigarh Assembly in Assembly Election (AE) under Kalahandi Parliamentary Constituency in Odisha (2019)

Polling Station Number	Winner Party	Winner Votes (%)	Runner-up Party	Runner-up Votes (%)	Winning Margin Votes (%)	Third Party	Third Party Votes (%)	Other Votes (%)
71	INC	202 (52.2)	BJP	89 (23)	113 (29.2)	BJD	83 (21.45)	13 (3.36)
72	BJP	129 (34.68)	BJD	104 (27.96)	25 (6.72)	INC	74 (19.89)	65 (17.47)
73	BJP	103 (39.77)	INC	71 (27.41)	32 (12.36)	BJD	31 (11.97)	54 (20.85)
74	INC	218 (35.16)	BJD	206 (33.23)	12 (1.93)	BJP	145 (23.39)	51 (8.23)
75	BJD	290 (45.03)	INC	209 (32.45)	81 (12.58)	BJP	75 (11.65)	70 (10.87)
76	INC	150 (36.14)	BJD	144 (34.7)	6 (1.44)	BJP	83 (20)	38 (9.16)
77	BJD	380 (41.44)	INC	256 (27.92)	124 (13.52)	BJP	222 (24.21)	59 (6.43)
78	BJD	202 (35.13)	INC	173 (30.09)	29 (5.04)	BJP	157 (27.3)	43 (7.48)
79	BJD	160 (43.6)	BJP	128 (34.88)	32 (8.72)	INC	71 (19.35)	8 (2.18)
80	INC	137 (37.33)	BJP	117 (31.88)	20 (5.45)	BJD	94 (25.61)	19 (5.18)
81	BJD	261 (47.63)	INC	144 (26.28)	117 (21.35)	BJP	94 (17.15)	49 (8.94)
82	BJD	186 (41.43)	INC	157 (34.97)	29 (6.46)	BJP	80 (17.82)	26 (5.79)
83	BJD	317 (41.06)	BJP	280 (36.27)	37 (4.79)	INC	146 (18.91)	29 (3.76)
84	INC	478 (76.97)	BJD	74 (11.92)	404 (65.05)	BJP	28 (4.51)	41 (6.6)
85	INC	340 (68)	BJP	93 (18.6)	247 (49.4)	BJD	43 (8.6)	24 (4.8)
86	INC	155 (39.74)	BJD	145 (37.18)	10 (2.56)	BJP	54 (13.85)	36 (9.23)
87	BJD	404 (40.81)	INC	284 (28.69)	120 (12.12)	BJP	232 (23.43)	70 (7.07)
88	BJD	247 (50.93)	INC	126 (25.98)	121 (24.95)	BJP	87 (17.94)	25 (5.15)
89	INC	328 (43.97)	BJD	228 (30.56)	100 (13.41)	BJP	118 (15.82)	72 (9.65)
90	INC	286 (55.11)	BJD	111 (21.39)	175 (33.72)	BJP	58 (11.18)	64 (12.33)
91	BJD	349 (41.11)	INC	258 (30.39)	91 (10.72)	BJP	212 (24.97)	30 (3.53)
92	INC	369 (48.68)	BJD	191 (25.2)	178 (23.48)	BJP	132 (17.41)	66 (8.71)
93	NV	NV (NV)	NV	NV (NV)	NV (NV)	NV	NV (NV)	NV (NV)
94	INC	452 (70.63)	BJD	83 (12.97)	369 (57.66)	BJP	48 (7.5)	57 (8.91)
95	INC	529 (71.1)	BJD	81 (10.89)	448 (60.21)	BJP	69 (9.27)	65 (8.74)
96	INC	235 (66.2)	BJP	39 (10.99)	196 (55.21)	BJD	28 (7.89)	53 (14.93)
97	INC	177 (46.7)	BJD	46 (12.14)	131 (34.56)	BJP	31 (8.18)	125 (32.98)
98	INC	328 (38.77)	BJP	265 (31.32)	63 (7.45)	BJD	191 (22.58)	62 (7.33)
99	BJP	245 (45.54)	INC	131 (24.35)	114 (21.19)	BJD	121 (22.49)	41 (7.62)
100	INC	134 (34.99)	BJP	121 (31.59)	13 (3.4)	BJD	70 (18.28)	58 (15.14)
101	BJP	204 (47.78)	INC	105 (24.59)	99 (23.19)	BJD	73 (17.1)	45 (10.54)
102	INC	189 (47.97)	BJP	85 (21.57)	104 (26.4)	BJD	77 (19.54)	43 (10.91)
103	INC	263 (43.19)	BJD	133 (21.84)	130 (21.35)	BJP	118 (19.38)	95 (15.6)
104	BJP	279 (34.88)	INC	251 (31.38)	28 (3.5)	BJD	223 (27.88)	47 (5.88)
105	INC	349 (50.29)	BJD	165 (23.78)	184 (26.51)	BJP	107 (15.42)	73 (10.52)

Contd....

Socio-Economic Amenities - Rural

Access to Education Facilities

Particulars	Number of Villages (% of Population)				
	Available	Not Available	If Not Available (Distance of Nearest Facility)		
			A	B	C
Govt. Primary School	466 (84)	411 (16)	312 (12)	79 (3)	18 (1)
Private Primary School	24 (4)	853 (96)	0 (0)	0 (0)	0 (0)
Govt. Middle School	151 (47)	726 (53)	238 (21)	367 (24)	109 (7)
Private Middle School	11 (3)	866 (97)	2 (0)	4 (0)	3 (0)
Govt. Secondary School	45 (23)	832 (77)	249 (30)	472 (34)	0 (0)
Private Secondary School	6 (2)	871 (98)	32 (4)	73 (8)	0 (0)
Govt. Senior Secondary School	4 (3)	873 (97)	45 (8)	169 (26)	435 (40)
Private Senior Secondary School	5 (4)	872 (96)	6 (1)	30 (6)	183 (13)
Govt. Arts and Science Degree College	2 (1)	875 (99)	18 (4)	129 (20)	693 (67)
Private Arts and Science Degree College	3 (4)	874 (96)	0 (0)	2 (0)	30 (4)
Govt. Engineering College	0 (0)	877 (100)	6 (1)	61 (6)	810 (93)
Private Engineering College	0 (0)	877 (100)	0 (0)	0 (0)	0 (0)
Govt. Medicine College	0 (0)	877 (100)	0 (0)	20 (1)	747 (88)
Private Medicine College	0 (0)	877 (100)	0 (0)	0 (0)	0 (0)
Govt. Management Institute	0 (0)	877 (100)	2 (0)	57 (6)	818 (93)
Private Management Institute	0 (0)	877 (100)	0 (0)	0 (0)	0 (0)
Govt. Polytechnic	0 (0)	877 (100)	0 (0)	10 (1)	117 (14)
Private Polytechnic	0 (0)	877 (100)	0 (0)	2 (0)	13 (1)
Govt. Vocational Training School/ITI	0 (0)	877 (100)	10 (1)	44 (6)	583 (78)
Private Vocational Training School/ITI	0 (0)	877 (100)	0 (0)	0 (0)	21 (3)
Govt. Non Formal Training Centre	0 (0)	877 (100)	8 (1)	42 (6)	275 (46)
Private Non Formal Training Centre	0 (0)	877 (100)	0 (0)	0 (0)	219 (23)
Govt. School For Disabled	0 (0)	877 (100)	8 (1)	42 (6)	473 (66)
Private School For Disabled	0 (0)	877 (100)	0 (0)	0 (0)	9 (2)
Government Others	0 (0)	877 (100)	1 (0)	7 (1)	276 (24)
Private Others	1 (3)	876 (97)	2 (0)	4 (1)	9 (1)

Note : Distance A : Less than 5 km; B : Between 5-10 km; C : 10+ km.; Source : Data Analysis is based on 2011 Census.

DISCLAIMER

The Terms of Use and Disclaimer of Datanet India Private Limited (hereinafter referred to as "Datanet") for use of this analysis report of **Lanjigarh Assembly Constituency (Lanjigarh Vidhan Sabha)** :-

1. **Assembly Factbook™** is a Registered Trade Mark owned by Datanet.
2. All the maps are sketched and graphical representation only and have not been drawn to the scale and also not to represent the actual geographical area or boundary of the unit.
3. The data for the aforesaid analysis is based on authentic sources and has been culled from the various publications of Census, CSO and NSSO for district and block level data, various central and state government departments, Central & State Elections Commissions and the concerned Returning Officers' releases, Electoral Rolls, Election results and allied publications, internal assessment, surveys, estimates and analysis. Therefore, certain adjustment of data at micro level may have been done to arrive closer to the macro data.
4. Data have been provided on an "As Is" and "As AVAILABLE" basis
5. The colours shown in the maps or diagram and charts of a particular party, alliance or AC are indicative and do not represent them.
6. This publication which includes maps, sheets, graphs and data would be the property under copyright of Datanet only. The user may use these for its internal study, analysis and research purposes. It's public display, re-selling or any commercial uses by the user are not allowed.
7. Datanet has taken due care and caution in compilation and processing of data and allied information, but does not guarantee the accuracy, adequacy or completeness of any information/analysis and will be not responsible for any errors or omissions or for the results obtained from the use of such information/analysis.
8. All the contents for the publication have been culled from various authentic sources and Datanet reasonably believes such sources to be reliable, but does not make any representations, express or implied as to the accuracy or fitness of use of such information. The information or contents of the information/analysis do not constitute advice and should not be relied upon in making (or refraining from making) any decision. Any reliance placed upon the information provided by Datanet is the sole responsibility and strictly at the user's risk.
9. In no event will Datanet be liable for any damages (including, without limitation, damages for loss of business projects, or loss of profits) arising in contract, tort or otherwise from the use of or inability to use any of its contents, or from any action taken (or refrained from being taken) as a result of using the analysis or any of its contents. Datanet its directors, owners, editors, officials, employees, distributor and agents or any associate will not be liable for any errors in the information contained or any consequences arising from the use of the contents of the provided information/analysis.
10. If any provision of these terms and conditions is held invalid or illegal or unenforceable for any reason by any court of competent jurisdiction, such provision shall be severed and the remainder of provisions of the terms and conditions shall continue in full force and effect as if the Term of Use had been executed with the invalid, illegal or unenforceable provision eliminated.
11. If there are any discrepancies in the information provided, please bring it to attention of Datanet for suitable rectification measures.

Buy Online This Complete Book At
Datanet India eBooks Store

www.indiastatpublications.com

or go directly at

[http://www.indiastatpublications.com/
Assembly_factbook/Odisha/Kalahandi/ Lanjigarh](http://www.indiastatpublications.com/Assembly_factbook/Odisha/Kalahandi/Lanjigarh)

 **india**stat**elections**

ISBN : 978-93-5313-262-0



9 789353 132620