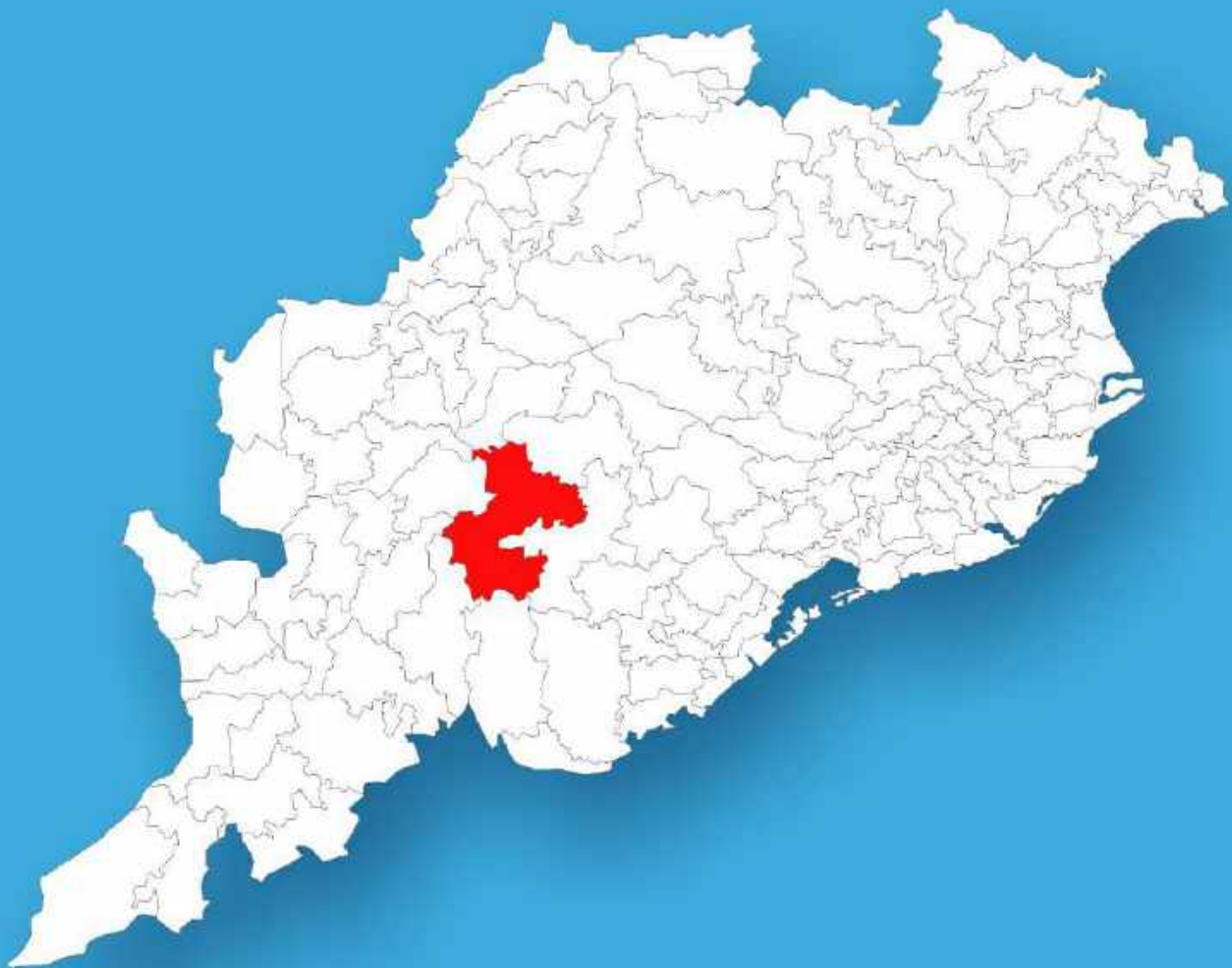




Odisha

# Assembly Factbook™

Baliguda Assembly Constituency

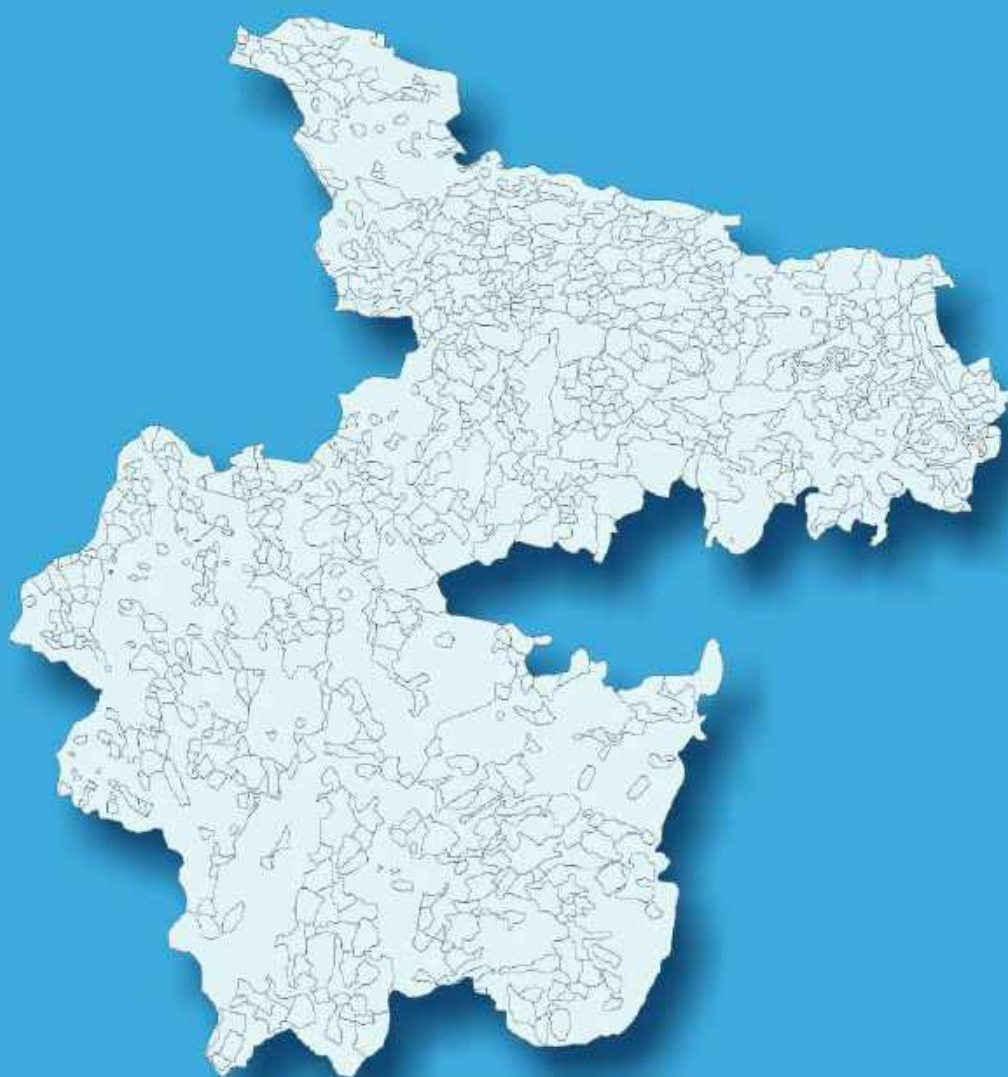


Key Electoral Data of Baliguda  
Assembly Constituency (Vidhan Sabha)

Odisha

# **Assembly Factbook™**

Baliguda Assembly Constituency



Baliguda Vidhan Sabha

## **Editor & Director**

Dr. R.K. Thukral

## **Research Editor**

Dr. Shafeeq Rahman

## **Compiled, Researched and Published by Datanet India Pvt. Ltd.**

D-100, 1st Floor,

Okhla Industrial Area, Phase-I,  
New Delhi- 110020.

Ph.: 91-11- 43580781-84

Email : support@indiastatpublications.com

Website : www.indiastatelections.com

## **Online Book Store :**

www.indiastatpublications.com

**Report No. :** AFB/OD-082-0125

**ISBN :** 978-93-5313-211-8

**First Edition :** January, 2018

**Eighth Updated Edition :** January, 2025

**Price :** Rs. 11500/-

US\$ 310

**© Datanet India Pvt. Ltd.**

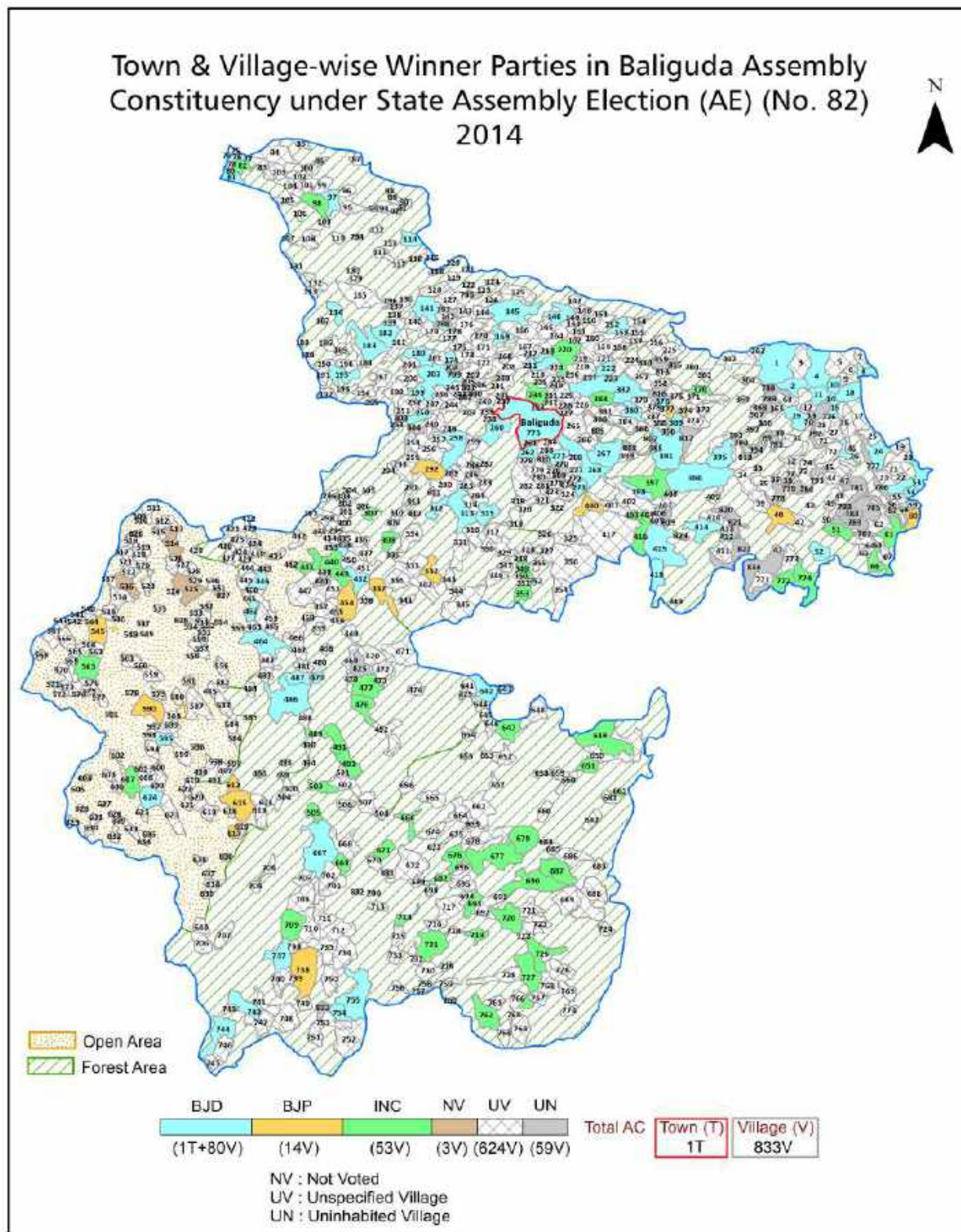
All rights reserved. No part of this book may be reproduced, stored in a retrieval system or transmitted in any form or by any means, mechanical photocopying, photographing, scanning, recording or otherwise without the prior written permission of the publisher. Please refer to Disclaimer at page no. 213 for the use of this publication.

Printed in India

No.	Particulars	Page No.
	<b>Introduction</b>	
1	Assembly Constituency - (Vidhan Sabha) at a Glance   Features of Assembly as per Delimitation Commission of India (2008)	1-2
	<b>Location and Political Maps</b>	
2	Location Map   Boundaries of Assembly Constituency - (Vidhan Sabha in District   Boundaries of Assembly Constituency under Parliamentary Constituency - (Lok Sabha)   Town & Village-wise Winner Parties- 2024-PE, 2024-AE, 2019-PE, 2019-AE, 2014-PE, 2014-AE, 2009-PE and 2009-AE	3-11
	<b>Administrative Setup (2011)</b>	
3	District   Sub-district   Towns   Villages   Inhabited Villages   Uninhabited Villages   Village Panchayat   Intermediate Panchayat	12-49
	<b>Demographics (2011)</b>	
4	Population   Households   Rural/Urban Population   Towns and Villages by Population Size   Sex Ratio (Total & 0-6 Years)   Religious Population   Social Population   Literacy Rate	50-51
	<b>Electoral Features</b>	
5	Important Dates of Last Elections Held   Electors by Gender   Service Electors   Voters   Voters Turnout   Polling Stations & Average Number of Electors per Polling Station   Electors by Age Group   Present Elected Representatives	52-57
	<b>Historical Summary Election Results</b>	
6	Vote Share of Major Parties   Winning Margin (Number & Percentage   Polarity of Parties   Summary Result of Assembly Segment of Parliamentary Elections 2024, 2019, 2014, 2009, 2004 and 1999   Summary Result of Assembly Elections 2024, 2019, 2014, 2009, 2004, 2000, 1995, 1990, 1985, 1980, 1977, 1974, 1971, 1967, 1961, 1957 and 1952	58-82
	<b>Polling Station Level Election Results</b>	
7	Name and Number of Polling Station 2024-PE, 2024-AE, 2019-PE, 2019-AE, 2014-PE, 2014-AE, 2009-PE and 2009-AE   Polling Station-wise Electors, Voters & Voters Turnout 2024-PE, 2024-AE, 2019-PE, 2019-AE, 2014-PE, 2014-AE, 2009-PE and 2009-AE   Polling Station wise Elections Results 2024-PE, 2024-AE, 2019-PE, 2019-AE, 2014-PE, 2014-AE, 2009-PE and 2009-AE	83-192
	<b>Share of Assembly Constituency</b>	
8	Share of Assembly Constituency - (Vidhan Sabha) in State, District and Parliamentary Constituency - (Lok Sabha)	193
	<b>Socio-Economic Amenities (2011)</b>	
9	Access to Administrative Units   Agricultural, Manufacturing and Industrial Commodities   Demographic Indicators   Education   Health & Manpower   Drinking Water Supply   Sanitation   Entertainment and Recreations Infrastructure   Power   Food Allocation Distribution and Marketing of Agriculture Commodities Infrastructure   Transport and Road Infrastructure   Communication   Banking and Financial Services   Land Use   Irrigation Source	195-209
10	<b>Abbreviation &amp; Sources</b>	210-211
11	<b>Disclaimer</b>	213



## Location & Political Map



## Administrative Setup

### List of Village Panchayat & Intermediate Panchayat (Block) Name - 2011

Village Name	Village Panchayat Name	Intermediate Panchayat Name
Adabali	Jhiripani	Tumudibandha
Adangamal	Judabali	Kotagarh
Adilipa	Jhiripani	Tumudibandha
Adimaha	Mahasingi	K.Nuagaon
Adipadar	Madaguda	Kotagarh
Ambabadi	Sudra	Baliguda
Ambidikhol	Bilamal	Tumudibandha
Ambilipada	Gunjibadi	K.Nuagaon
Anagula	Landagam	Baliguda
Andaragan	Sindrigam	Baliguda
Arjunapura	Lankagada	Tumudibandha
Artabali	Lankagada	Tumudibandha
Asurkupa	Sudra	Baliguda
Aswabisha	Rutungia	Baliguda
Atabadi	Mundigada	Tumudibandha
Badabandha	Tumudibandh	Tumudibandha
Badagan	Baliguda	Baliguda
Badagan	Madaguda	Kotagarh
Badaguda	Parampanga	Baliguda
Badajal	Srirampur	Kotagarh
Badali	Kudutulli	K.Nuagaon
Badamila	Sirla	Tumudibandha
Badeketa	Mahasingi	K.Nuagaon
Badenigan	Khamankhole	Baliguda
Badipanga	Durgapanga	Kotagarh
Badrukia	Budrukia	Baliguda
Badungia	Rutungia	Baliguda
Bagada	Sainipada	K.Nuagaon
Bajakia	Midiakia	Baliguda

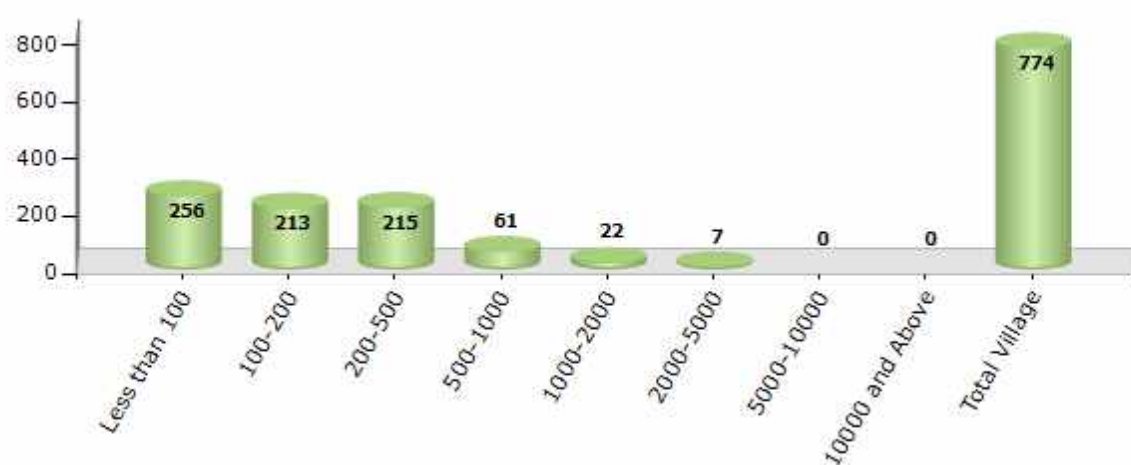
Contd....

## Demographic

### Number of Villages by Population Size - 2011

Less than 100	100-200	200-500	500-1000	1000-2000	2000-5000	5000-10000	10000 and Above	Total Village
256	213	215	61	22	7	0	0	774

Number of Villages by Population Size - 2011



### Number of Towns by Population Size - 2011

Less than 4999	5000-9999	10000-19999	20000-49999	50000-99999	100000 and Above	Total Town
0	0	1	0	0	0	1

Number of Towns by Population Size - 2011



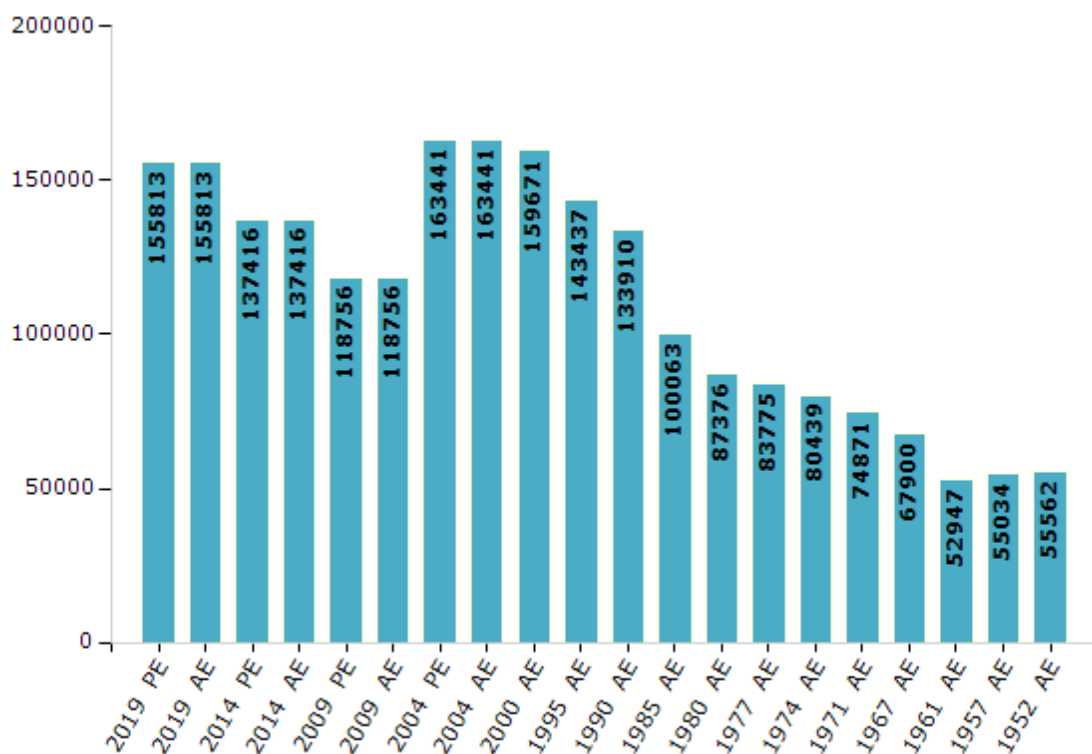
## Electoral Features

### Electors by Male & Female

Year	Male	Female	Others	Total
2019 PE	75182	80624	7	155813
2019 AE	75182	80624	7	155813
2014 PE	67311	70101	4	137416
2014 AE	67311	70101	4	137416
2009 PE	58181	60575	-	118756
2009 AE	58181	60575	-	118756
2004 PE	79906	83535	-	163441
2004 AE	79906	83535	-	163441
2000 AE	79318	80353	-	159671
1999 PE	-	-	-	-
1995 AE	72175	71262	-	143437

Year	Male	Female	Others	Total
1990 AE	69912	63998	-	133910
1985 AE	51682	48381	-	100063
1980 AE	44036	43340	-	87376
1977 AE	42465	41310	-	83775
1974 AE	40095	40344	-	80439
1971 AE	39122	35749	-	74871
1967 AE	67900	0	-	67900
1961 AE	52947	0	-	52947
1957 AE	55034	0	-	55034
1952 AE	-	-	-	55562

Number of Electors



**Note :** AE : Assembly Election, PE : Assembly Segment of Parliamentary Election

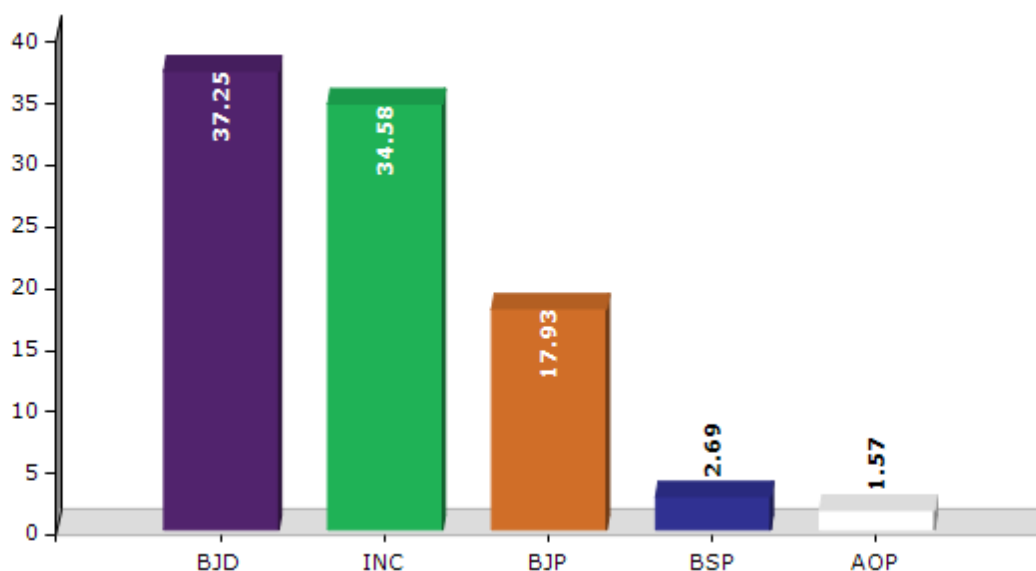


## Historical Summary Election Results

### Summary Result of Assembly Election - 2014

Candidate Name	Party	Votes	Votes %
Rajib Patra	BJD	37606	37.25
Klesa Pradhan	INC	34910	34.58
Karendra Majhi	BJP	18103	17.93
Nabaghana Karjimajhi	BSP	2718	2.69
Dukhishyam Muthamajhi	AOP	1582	1.57
Debendra Kanhar	IND	1429	1.42
Bijeswar Mallick	OJM	1426	1.41
Minati Mallick	IND	1314	1.3
	NOTA	1856	1.84

Votes Percentage of Top Parties - 2014



## Polling Station Level Election Results

### Number and Name of Polling Stations (PS) (2019 AE)

Number of Polling Stations	Name of Polling Stations	Number of Polling Stations	Name of Polling Stations
1	Anagul	22	Sautikia
2	Karnibeda	23	Nilipada
3	Landagam	24	Sindrigaon
4	Landagam	25	Sindrigaon
5	Khamankhole	26	Manikuti
6	Khamankhole	27	Budrukia
7	Daka	28	Budrukia-1
8	Gatangi	29	Padamapadar
9	Melsikia	30	Badagam
10	Sudra	31	Dumudisahi
11	Jargi	32	Balliguda-1
12	Tikarbaju	33	Balliguda-Ii
13	Rebingia	34	Balliguda-2
14	Rebingia	35	Dandapadar
15	Dulukia(Kutiguda)	36	Balliguda-4
16	Barakhama-1	37	Balliguda-5
17	Junagaon	38	Nuasahi
18	Barakhama-2	39	Nuasahi
19	Barakhama-3	40	Nuasahi-Ii
20	Salaguda	41	Sunapanga
21	Kutikia	42	Sunapanga-Ii

Contd....

## Polling Station Level Election Results

### Polling Station-wise Votes Secured by Overall Top Five Parties in Baliguda Assembly in Assembly Election (AE) under Kandhamal Parliamentary Constituency in Odisha (2019)

Number of Polling Station	Winner - Chakramani Kanhar (BJD)	Runner-up - Siman Mallick (INC)	3rd - Karendra Majhi (BJP)	4th - Jayasingh Mallick (BMUP)	5th - Kunal Pradhan (NCP)	NOTA	Other	Total Votes Secured
36	215	264	105	6	1	11	2	604
37	90	115	115	15	3	3	9	350
38	291	73	329	1	4	16	16	730
39	226	370	124	8	3	4	7	742
40	254	171	249	12	8	3	11	708
41	225	147	196	4	4	5	9	590
42	260	145	166	15	3	9	6	604
43	112	106	144	1	4	10	2	379
44	172	64	157	0	1	4	3	401
45	244	125	185	7	5	9	4	579
46	203	160	205	7	7	6	1	589
47	142	225	79	7	5	4	4	466
48	152	303	34	3	3	4	2	501
49	194	295	55	14	12	6	7	583
50	227	275	145	8	6	13	7	681
51	237	307	157	11	11	18	6	747
52	275	94	261	4	14	11	5	664
53	281	311	203	12	10	6	7	830
54	349	101	306	10	5	17	4	792
55	348	76	185	4	3	7	5	628
56	265	178	234	9	10	11	7	714
57	250	38	176	2	6	6	0	478
58	231	153	141	5	2	5	4	541
59	335	111	82	2	2	1	1	534
60	167	56	139	6	3	6	2	379
61	299	63	149	2	6	2	8	529
62	344	121	112	12	21	5	12	627
63	252	150	51	4	3	7	2	469
64	448	15	17	1	3	1	0	485
65	202	116	87	7	5	6	5	428
66	271	123	144	10	13	5	5	571
67	238	108	74	4	8	4	6	442
68	209	72	144	2	2	5	2	436
69	289	132	86	7	9	4	4	531
70	370	136	262	9	3	6	5	791

Contd....

## Polling Station Level Election Results

**Winner, Runner-up and 3rd Party Position & Winning Margin According to Polling Stations in Baliguda Assembly in Assembly Election (AE) under Kandhamal Parliamentary Constituency in Odisha (2019)**

Polling Station Number	Winner Party	Winner Votes (%)	Runner-up Party	Runner-up Votes (%)	Winning Margin Votes (%)	Third Party	Third Party Votes (%)	Other Votes (%)
71	BJD	385 (52.17)	BJP	207 (28.05)	178 (24.12)	INC	119 (16.12)	27 (3.66)
72	BJD	405 (55.33)	BJP	194 (26.5)	211 (28.83)	INC	100 (13.66)	33 (4.51)
73	BJD	236 (54.25)	BJP	103 (23.68)	133 (30.57)	INC	64 (14.71)	32 (7.36)
74	BJD	198 (51.83)	BJP	111 (29.06)	87 (22.77)	INC	61 (15.97)	12 (3.14)
75	BJD	227 (48.5)	BJP	134 (28.63)	93 (19.87)	INC	75 (16.03)	32 (6.84)
76	BJD	394 (52.82)	BJP	230 (30.83)	164 (21.99)	INC	81 (10.86)	41 (5.5)
77	BJD	302 (42.06)	INC	238 (33.15)	64 (8.91)	BJP	160 (22.28)	18 (2.51)
78	BJD	228 (43.76)	INC	176 (33.78)	52 (9.98)	BJP	94 (18.04)	23 (4.41)
79	INC	185 (42.63)	BJD	160 (36.87)	25 (5.76)	BJP	64 (14.75)	25 (5.76)
80	BJP	315 (47.37)	BJD	212 (31.88)	103 (15.49)	INC	101 (15.19)	37 (5.56)
81	INC	226 (42.56)	BJD	163 (30.7)	63 (11.86)	BJP	126 (23.73)	16 (3.01)
82	BJD	370 (52.11)	INC	182 (25.63)	188 (26.48)	BJP	134 (18.87)	24 (3.38)
83	BJD	315 (61.64)	BJP	120 (23.48)	195 (38.16)	INC	59 (11.55)	17 (3.33)
84	BJD	303 (68.24)	BJP	113 (25.45)	190 (42.79)	INC	19 (4.28)	9 (2.03)
85	BJD	173 (38.96)	BJP	139 (31.31)	34 (7.65)	INC	119 (26.8)	13 (2.93)
86	BJD	225 (48.28)	BJP	185 (39.7)	40 (8.58)	INC	45 (9.66)	11 (2.36)
87	BJD	242 (41.09)	BJP	178 (30.22)	64 (10.87)	INC	150 (25.47)	19 (3.23)
88	BJD	378 (71.32)	BJP	96 (18.11)	282 (53.21)	INC	23 (4.34)	33 (6.23)
89	INC	300 (39.79)	BJD	261 (34.62)	39 (5.17)	BJP	172 (22.81)	21 (2.79)
90	INC	326 (52.41)	BJD	144 (23.15)	182 (29.26)	BJP	138 (22.19)	14 (2.25)
91	INC	301 (40.51)	BJP	267 (35.94)	34 (4.57)	BJD	158 (21.27)	17 (2.29)
92	INC	227 (37.96)	BJP	205 (34.28)	22 (3.68)	BJD	146 (24.41)	20 (3.34)
93	BJD	403 (58.66)	BJP	215 (31.3)	188 (27.36)	INC	54 (7.86)	15 (2.18)
94	BJD	267 (45.03)	INC	191 (32.21)	76 (12.82)	BJP	115 (19.39)	20 (3.37)
95	BJD	103 (40.87)	BJP	69 (27.38)	34 (13.49)	INC	67 (26.59)	13 (5.16)
96	BJD	313 (42.47)	INC	220 (29.85)	93 (12.62)	BJP	189 (25.64)	15 (2.04)
97	INC	137 (45.21)	BJD	106 (34.98)	31 (10.23)	BJP	50 (16.5)	10 (3.3)
98	INC	157 (33.19)	BJP	147 (31.08)	10 (2.11)	BJD	142 (30.02)	27 (5.71)
99	INC	181 (45.94)	BJD	133 (33.76)	48 (12.18)	BJP	67 (17.01)	13 (3.3)
100	BJD	159 (39.95)	BJP	117 (29.4)	42 (10.55)	INC	102 (25.63)	20 (5.03)
101	BJP	149 (50.51)	BJD	119 (40.34)	30 (10.17)	INC	13 (4.41)	14 (4.75)
102	BJD	352 (47.38)	INC	193 (25.98)	159 (21.4)	BJP	152 (20.46)	46 (6.19)
103	INC	348 (48.95)	BJD	238 (33.47)	110 (15.48)	BJP	102 (14.35)	23 (3.23)
104	BJP	226 (40.21)	INC	162 (28.83)	64 (11.38)	BJD	159 (28.29)	15 (2.67)
105	INC	205 (36.03)	BJP	184 (32.34)	21 (3.69)	BJD	154 (27.07)	26 (4.57)

Contd....

## Socio-Economic Amenities - Rural

### Access to Education Facilities

Particulars	Number of Villages (% of Population)				
	Available	Not Available	If Not Available (Distance of Nearest Facility)		
			A	B	C
Govt. Primary School	535 (92)	239 (8)	213 (8)	24 (1)	2 (0)
Private Primary School	22 (10)	752 (90)	0 (0)	0 (0)	0 (0)
Govt. Middle School	155 (52)	619 (48)	320 (26)	250 (18)	28 (2)
Private Middle School	11 (6)	763 (94)	11 (1)	8 (1)	0 (0)
Govt. Secondary School	42 (24)	732 (76)	231 (28)	340 (31)	0 (0)
Private Secondary School	9 (5)	765 (95)	79 (7)	78 (8)	0 (0)
Govt. Senior Secondary School	5 (6)	769 (94)	25 (4)	60 (8)	261 (31)
Private Senior Secondary School	5 (7)	769 (93)	17 (3)	73 (9)	331 (36)
Govt. Arts and Science Degree College	3 (5)	771 (95)	17 (2)	55 (7)	273 (33)
Private Arts and Science Degree College	6 (2)	768 (98)	5 (1)	30 (4)	385 (46)
Govt. Engineering College	0 (0)	774 (100)	1 (0)	0 (0)	773 (100)
Private Engineering College	0 (0)	774 (100)	0 (0)	0 (0)	0 (0)
Govt. Medicine College	0 (0)	774 (100)	0 (0)	0 (0)	760 (100)
Private Medicine College	0 (0)	774 (100)	0 (0)	0 (0)	0 (0)
Govt. Management Institute	0 (0)	774 (100)	0 (0)	0 (0)	700 (87)
Private Management Institute	0 (0)	774 (100)	0 (0)	0 (0)	74 (13)
Govt. Polytechnic	0 (0)	774 (100)	0 (0)	1 (0)	409 (57)
Private Polytechnic	0 (0)	774 (100)	0 (0)	0 (0)	345 (42)
Govt. Vocational Training School/ITI	0 (0)	774 (100)	1 (0)	1 (0)	643 (81)
Private Vocational Training School/ITI	4 (0)	770 (100)	0 (0)	0 (0)	105 (17)
Govt. Non Formal Training Centre	0 (0)	774 (100)	0 (0)	2 (0)	464 (65)
Private Non Formal Training Centre	0 (0)	774 (100)	0 (0)	0 (0)	190 (16)
Govt. School For Disabled	0 (0)	774 (100)	1 (1)	1 (0)	151 (25)
Private School For Disabled	0 (0)	774 (100)	12 (1)	61 (9)	517 (60)
Government Others	0 (0)	774 (100)	0 (0)	0 (0)	2 (2)
Private Others	0 (0)	774 (100)	0 (0)	0 (0)	1 (0)

Note : Distance A : Less than 5 km; B : Between 5-10 km; C : 10+ km.; Source : Data Analysis is based on 2011 Census.



## DISCLAIMER

The Terms of Use and Disclaimer of Datanet India Private Limited (hereinafter referred to as "Datanet") for use of this analysis report of **Baliguda Assembly Constituency (Baliguda Vidhan Sabha)** :-

1. **Assembly Factbook™** is a Registered Trade Mark owned by Datanet.
2. All the maps are sketched and graphical representation only and have not been drawn to the scale and also not to represent the actual geographical area or boundary of the unit.
3. The data for the aforesaid analysis is based on authentic sources and has been culled from the various publications of Census, CSO and NSSO for district and block level data, various central and state government departments, Central & State Elections Commissions and the concerned Returning Officers' releases, Electoral Rolls, Election results and allied publications, internal assessment, surveys, estimates and analysis. Therefore, certain adjustment of data at micro level may have been done to arrive closer to the macro data.
4. Data have been provided on an "As Is" and "As AVAILABLE" basis
5. The colours shown in the maps or diagram and charts of a particular party, alliance or AC are indicative and do not represent them.
6. This publication which includes maps, sheets, graphs and data would be the property under copyright of Datanet only. The user may use these for its internal study, analysis and research purposes. It's public display, re-selling or any commercial uses by the user are not allowed.
7. Datanet has taken due care and caution in compilation and processing of data and allied information, but does not guarantee the accuracy, adequacy or completeness of any information/analysis and will be not responsible for any errors or omissions or for the results obtained from the use of such information/analysis.
8. All the contents for the publication have been culled from various authentic sources and Datanet reasonably believes such sources to be reliable, but does not make any representations, express or implied as to the accuracy or fitness of use of such information. The information or contents of the information/analysis do not constitute advice and should not be relied upon in making (or refraining from making) any decision. Any reliance placed upon the information provided by Datanet is the sole responsibility and strictly at the user's risk.
9. In no event will Datanet be liable for any damages (including, without limitation, damages for loss of business projects, or loss of profits) arising in contract, tort or otherwise from the use of or inability to use any of its contents, or from any action taken (or refrained from being taken) as a result of using the analysis or any of its contents. Datanet its directors, owners, editors, officials, employees, distributor and agents or any associate will not be liable for any errors in the information contained or any consequences arising from the use of the contents of the provided information/analysis.
10. If any provision of these terms and conditions is held invalid or illegal or unenforceable for any reason by any court of competent jurisdiction, such provision shall be severed and the remainder of provisions of the terms and conditions shall continue in full force and effect as if the Term of Use had been executed with the invalid, illegal or unenforceable provision eliminated.
11. If there are any discrepancies in the information provided, please bring it to attention of Datanet for suitable rectification measures.

**Buy Online This Complete Book At**  
**Datanet India eBooks Store**

[www.indiastatpublications.com](http://www.indiastatpublications.com)

or go directly at

[http://www.indiastatpublications.com/  
Assembly\\_factbook/Odisha/Kandhamal/ Baliguda](http://www.indiastatpublications.com/Assembly_factbook/Odisha/Kandhamal/Baliguda)

 **indiaSTAT**elections

ISBN : 978-93-5313-211-8



9 789353 132118