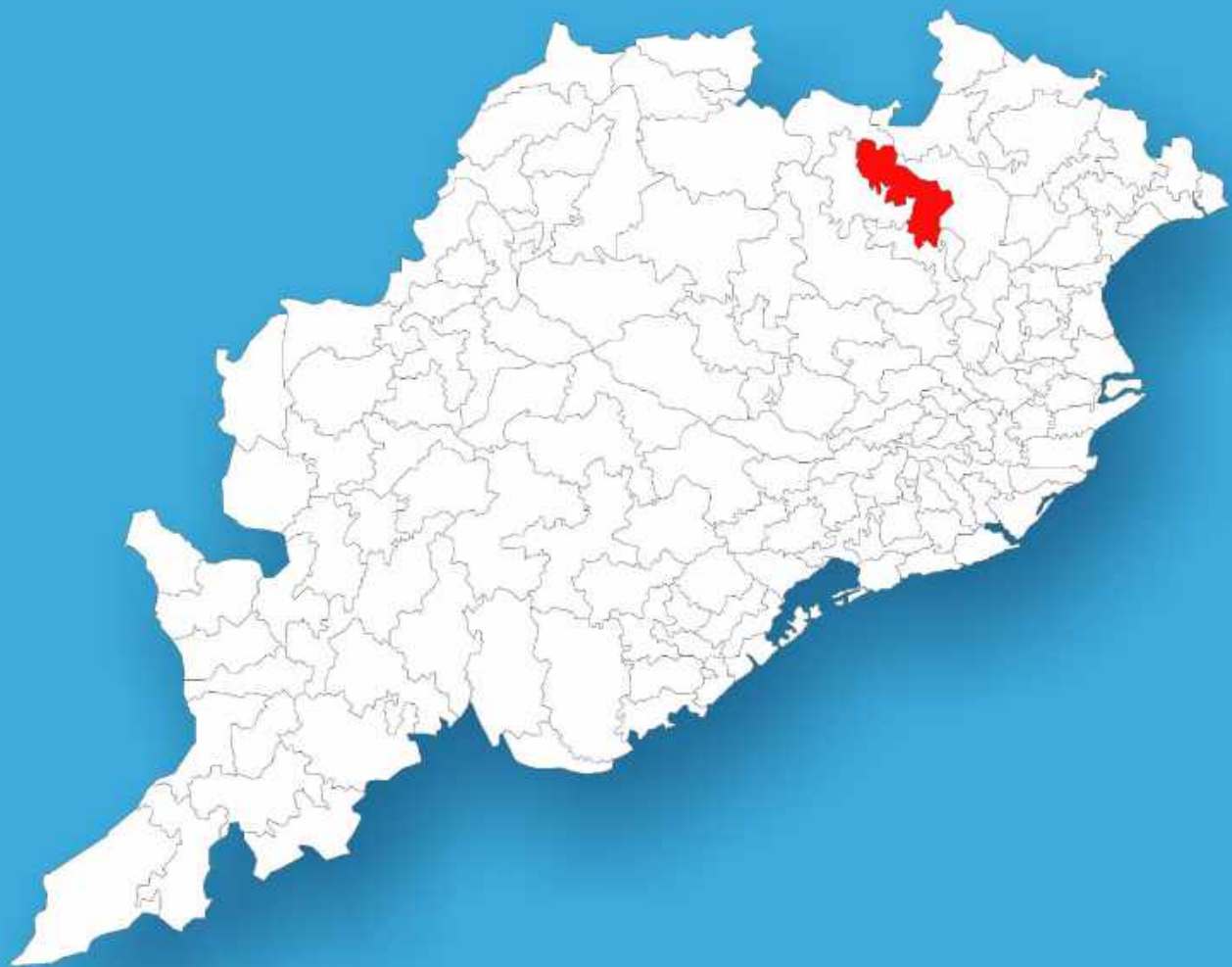




Odisha

# Assembly Factbook™

Patna Assembly Constituency



Key Electoral Data of Patna  
Assembly Constituency (Vidhan Sabha)

Odisha

# Assembly Factbook™

Patna Assembly Constituency



Patna Vidhan Sabha

## **Editor & Director**

Dr. R.K. Thukral

## **Research Editor**

Dr. Shafeeq Rahman

## **Compiled, Researched and Published by Datanet India Pvt. Ltd.**

D-100, 1st Floor,

Okhla Industrial Area, Phase-I,

New Delhi- 110020.

Ph.: 91-11- 43580781-84

Email : support@indiastatpublications.com

Website : www.indiastatelections.com

## **Online Book Store :**

www.indiastatpublications.com

**Report No. :** AFB/OD-023-0125

**ISBN :** 978-93-6219-401-5

**First Edition :** January, 2018

**Eighth Updated Edition :** January, 2025

**Price :** Rs.11500/-

US\$ 310

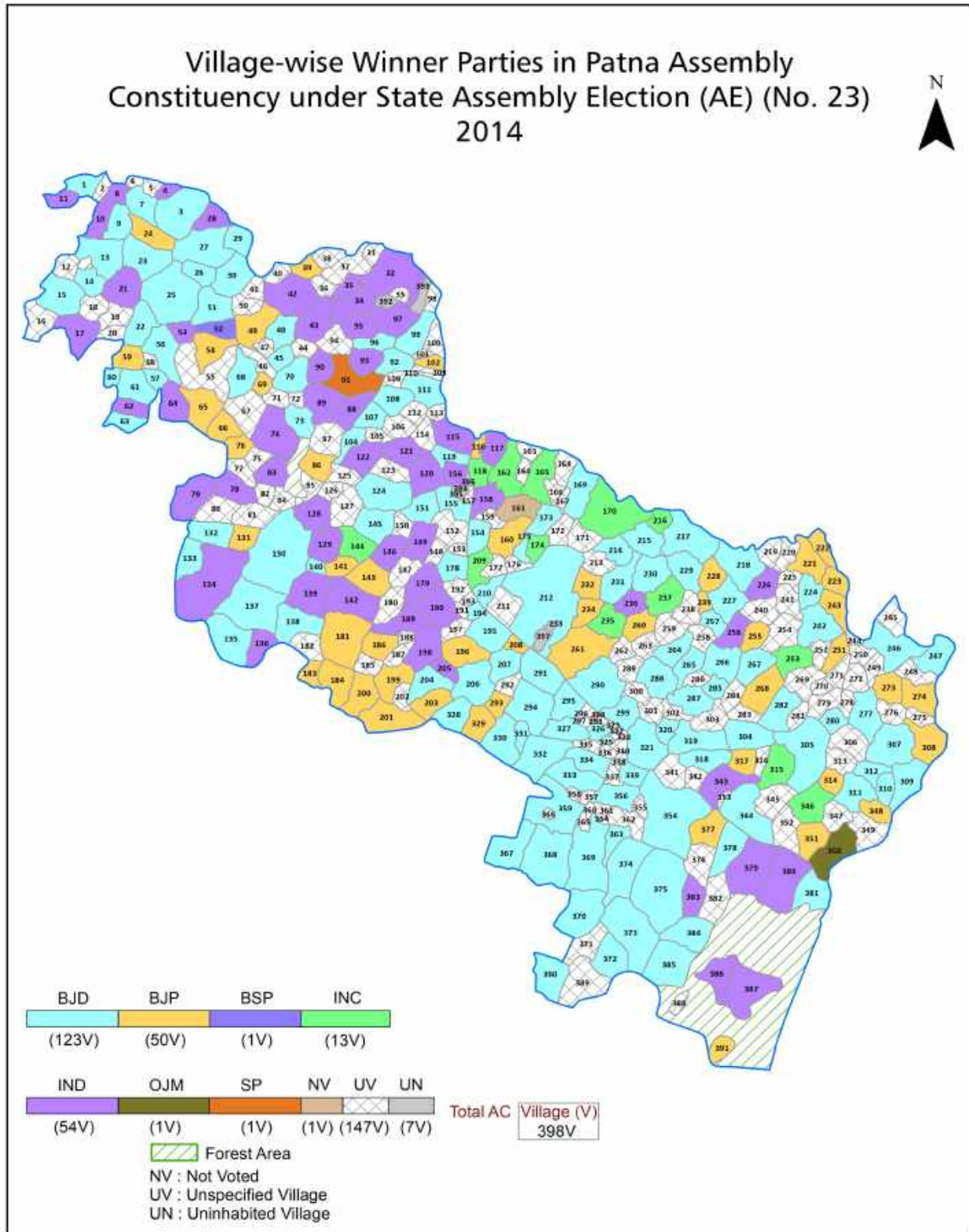
**© Datanet India Pvt. Ltd.**

All rights reserved. No part of this book may be reproduced, stored in a retrieval system or transmitted in any form or by any means, mechanical photocopying, photographing, scanning, recording or otherwise without the prior written permission of the publisher. Please refer to Disclaimer at page no. 221 for the use of this publication.

Printed in India

No.	Particulars	Page No.
	<b>Introduction</b>	
1	Assembly Constituency - (Vidhan Sabha) at a Glance   Features of Assembly as per Delimitation Commission of India (2008)	1-2
	<b>Location and Political Maps</b>	
2	Location Map   Boundaries of Assembly Constituency - (Vidhan Sabha) in District   Boundaries of Assembly Constituency under Parliamentary Constituency - (Lok Sabha)   Village-wise Winner Parties- 2024-PE, 2024-AE, 2019-PE, 2019-AE, 2014-AE, 2009-PE and 2009-AE	3-11
	<b>Administrative Setup (2011)</b>	
3	District   Sub-district   Towns   Villages   Inhabited Villages   Uninhabited Villages   Village Panchayat   Intermediate Panchayat	12-31
	<b>Demographic (2011)</b>	
4	Population   Households   Rural/Urban Population   Villages by Population Size   Sex Ratio (Total & 0-6 Years)   Religious Population   Social Population   Literacy Rate	32-33
	<b>Electoral Features</b>	
5	Important Dates of Last Elections Held   Electors by Gender   Service Electors   Voters   Voters Turnout   Polling Stations & Average Number of Electors per Polling Station   Electors by Age Group   Present Elected Representatives	34-39
	<b>Historical Summary Election Results</b>	
6	Vote Share of Major Parties   Winning Margin (Number & Percentage)   Polarity of Parties   Summary Result of Assembly Segment of Parliamentary Elections 2024, 2019, 2014, 2009, 2004 and 1999   Summary Result of Assembly Elections 2024, 2019, 2014, 2009, 2004, 2000, 1995, 1990, 1985, 1980, 1977, 1974, 1971, 1967 and 1961	40-62
	<b>Polling Station Level Election Results</b>	
7	Name and Number of Polling Station 2024-PE, 2024-AE, 2019-PE, 2019-AE, 2014-AE, 2009-PE and 2009-AE   Polling Station-wise Electors, Voters & Voters Turnout 2024-PE, 2024-AE, 2019-PE, 2019-AE, 2014-AE, 2009-PE and 2009-AE   Polling Station wise Elections Results 2024-PE, 2024-AE, 2019-PE, 2019-AE, 2014-AE, 2009-PE and 2009-AE	63-200
	<b>Share of Assembly Constituency</b>	
8	Share of Assembly Constituency - (Vidhan Sabha) in State, District and Parliamentary Constituency - (Lok Sabha)	201
	<b>Socio-Economic Amenities (2011)</b>	
9	Access to Administrative Units   Agricultural, Manufacturing and Industrial Commodities   Demographic Indicators   Education   Health & Manpower   Drinking Water Supply   Sanitation   Entertainment and Recreations Infrastructure   Power   Food Allocation Distribution and Marketing of Agriculture Commodities Infrastructure   Transport and Road Infrastructure   Communication   Banking and Financial Services   Land Use   Irrigation Source	203-217
10	<b>Abbreviation &amp; Sources</b>	218-219
11	<b>Disclaimer</b>	221

Location & Political Map



## Administrative Setup

### List of Village Panchayat & Intermediate Panchayat (Block) Name - 2011

Village Name	Village Panchayat Name	Intermediate Panchayat Name
Aharapada	Saharpada	Saharapada
Analadiha	Kendeipasi	Patana
Angikala	Chemena	Patana
Ankudi	Sadangi	Champua
Ankura	Tangarpada	Patana
Arjunpur	Malarpada	Saharapada
Asanabahali	Mirigikhoji	Patana
Asanabani	Digiposi	Saharapada
Asanapat	Asanpat	Jhumpura
Ashoki	Khuntapada	Jhumpura
Asuria	Khuntapada	Jhumpura
Badabaliposi	Sankhua	Saharapada
Badabil	Badabil	Saharapada
Badadhanurjayapur	Musakhari	Patana
Badadumuria	Badadumuria	Jhumpura
Badagahmaria	Kendeipasi	Patana
Badajamupasi	Saraskola	Patana
Badaneuli	Badaneuli	Jhumpura
Badapada(Barpada)	Uchabali	Champua
Badapadiapasi	Musakhari	Patana
Badapasi	Bhuinpur	Champua
Badapatana	Badapatna	Patana
Badaposi	Damahuda	Saharapada
Badnuagaon	Dumuria	Patana
Baidabaza	Dumuria	Patana
Baikala	Baikala	Saharapada
Baikunthapur	Baria	Jhumpura
Bala	Jajapasi	Champua
Balabhadrapur	Badabil	Saharapada

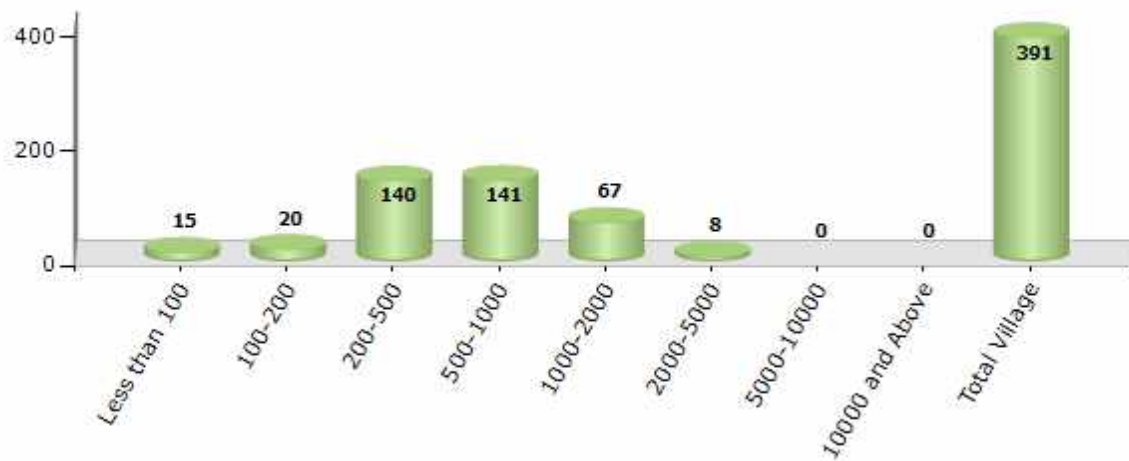
Contd....

Demographic

Number of Villages by Population Size - 2011

Less than 100	100-200	200-500	500-1000	1000-2000	2000-5000	5000-10000	10000 and Above	Total Village
15	20	140	141	67	8	0	0	391

Number of Villages by Population Size - 2011

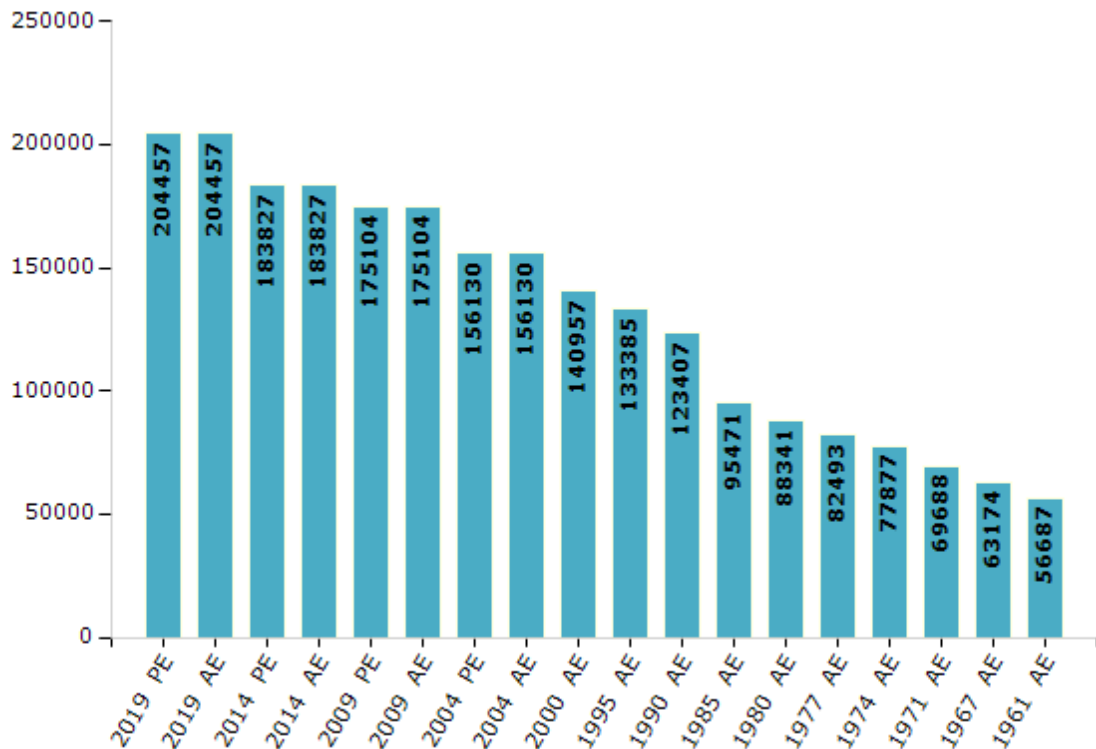


## Electoral Features

### Electors by Male & Female

Year	Male	Female	Others	Total	Year	Male	Female	Others	Total
2019 PE	102886	101571	0	204457	1990 AE	63542	59865	-	123407
2019 AE	102886	101571	0	204457	1985 AE	47635	47836	-	95471
2014 PE	93966	89861	0	183827	1980 AE	45192	43149	-	88341
2014 AE	93966	89861	0	183827	1977 AE	42312	40181	-	82493
2009 PE	88479	86625	-	175104	1974 AE	39183	38694	-	77877
2009 AE	88479	86625	-	175104	1971 AE	35536	34152	-	69688
2004 PE	78719	77411	-	156130	1967 AE	63174	0	-	63174
2004 AE	78719	77411	-	156130	1961 AE	56687	0	-	56687
2000 AE	71287	69670	-	140957	1957 AE	-	-	-	-
1999 PE	-	-	-	-	1952 AE	-	-	-	-
1995 AE	67304	66081	-	133385					

Number of Electors



Note : AE : Assembly Election, PE : Assembly Segment of Parliamentary Election

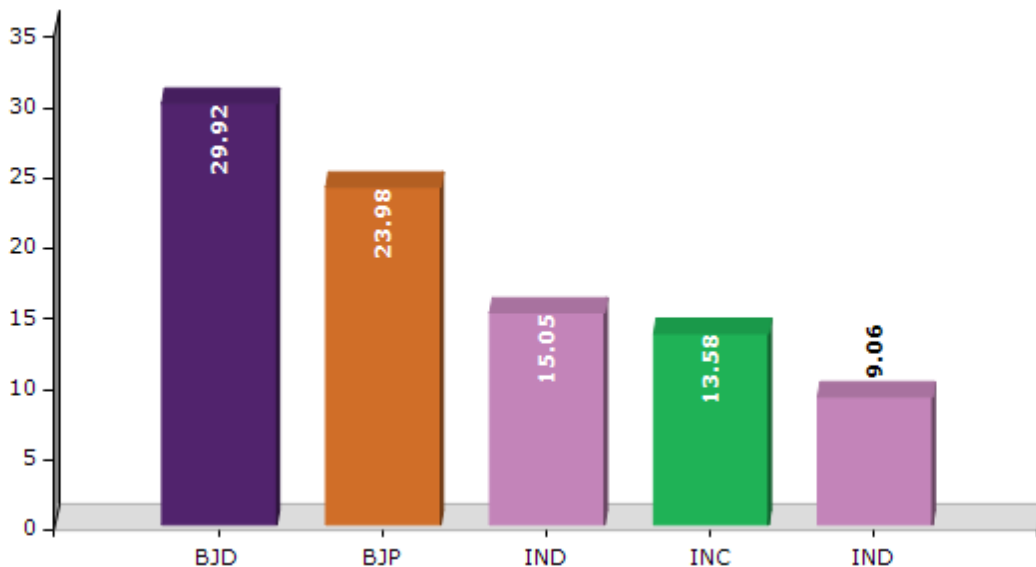


## Historical Summary Election Results

### Summary Result of Assembly Election - 2014

Candidate Name	Party	Votes	Votes %
Hrushikesh Naik	BJD	44584	29.92
Bhabani Sankar Nayak	BJP	35741	23.98
Gourahari Naik	IND	22430	15.05
Sanatan Naik	INC	20238	13.58
Kanhu Charan Naik	IND	13498	9.06
Gopeswar Naik	BSP	2837	1.9
Padmini Munda	SP	2341	1.57
Nirupama Tudu	RAIM	2276	1.53
Yashobanta Marndi	OJM	1497	1
Rasika Dehuri	CPI(ML)(L)	1390	0.93
	NOTA	2183	1.46

Votes Percentage of Top Parties - 2014



## Polling Station Level Election Results

### Number and Name of Polling Stations (PS) (2019 AE)

Number of Polling Stations	Name of Polling Stations	Number of Polling Stations	Name of Polling Stations
1	Ramachandrapur	22	Asuria
2	Sijukala	23	Barakhandia
3	Parshala	24	Barakhandia
4	Parshala	25	Asuki
5	Mananda	26	Khuntapada
6	Madhupur	27	Badadumuria
7	Chauthia	28	Badapasi
8	Gundunia	29	Bhuinpur
9	Gundunia-1	30	Bhuinpur-1
10	Mandama	31	Bardhana
11	Baruna	32	Parudipasi
12	Hastinapur	33	Niundi
13	Solagoda	34	Jyotipur
14	Mahadevpur	35	Jyotipur-1
15	Kalinga	36	Baliposi
16	Gidhibas	37	Sarangi
17	Dhatika	38	Jali
18	Bhodapasi	39	Kamanda
19	Chitrapur	40	Sirikuan
20	Asanapat	41	Chhelianal
21	Asanapat	42	Baria

Contd....

## Polling Station Level Election Results

### Polling Station-wise Votes Secured by Overall Top Five Parties in Patna Assembly in Assembly Election (AE) under Keonjhar Parliamentary Constituency in Odisha (2019)

Number of Polling Station	Winner - Jagannath Naik (BJD)	Runner-up - Bhabani Sankar Nayak (BJP)	3rd - Binod Bihari Naik (INC)	4th - Akhila Chandra Naik (IND)	5th - Benudhar Sardar (SUCI(C))	NOTA	Other	Total Votes Secured
36	276	323	28	80	6	9	18	740
37	572	185	64	16	6	11	11	865
38	211	135	144	46	6	6	5	553
39	258	181	12	28	0	3	8	490
40	187	253	24	30	1	2	6	503
41	158	94	54	105	4	4	11	430
42	153	253	46	93	1	8	12	566
43	422	286	52	25	2	20	18	825
44	223	258	10	25	0	1	5	522
45	230	145	28	67	1	5	4	480
46	116	294	29	33	3	2	15	492
47	301	231	93	74	7	3	12	721
48	369	129	110	150	4	8	16	786
49	127	125	11	86	9	2	4	364
50	187	547	71	116	8	7	30	966
51	355	106	28	179	3	8	13	692
52	334	216	82	86	1	2	11	732
53	126	63	61	70	2	0	6	328
54	429	207	157	14	2	2	6	817
55	318	175	16	72	4	3	12	600
56	378	228	104	30	3	9	12	764
57	327	328	53	16	3	6	15	748
58	304	241	31	5	2	1	5	589
59	269	453	120	96	9	21	26	994
60	38	53	531	10	3	6	3	644
61	194	286	225	72	6	4	9	796
62	286	430	130	54	8	19	25	952
63	212	154	42	23	1	1	3	436
64	507	404	88	18	8	5	19	1049
65	148	180	13	57	1	1	8	408
66	180	165	90	41	4	6	11	497
67	207	318	50	45	1	4	10	635
68	367	283	78	149	2	3	13	895
69	263	197	49	22	2	4	7	544
70	176	349	34	1	3	0	10	573

Contd....

## Polling Station Level Election Results

### Winner, Runner-up and 3rd Party Position & Winning Margin According to Polling Stations in Patna Assembly in Assembly Election (AE) under Keonjhar Parliamentary Constituency in Odisha (2019)

Polling Station Number	Winner Party	Winner Votes (%)	Runner-up Party	Runner-up Votes (%)	Winning Margin Votes (%)	Third Party	Third Party Votes (%)	Other Votes (%)
71	BJP	483 (45.61)	BJD	424 (40.04)	59 (5.57)	INC	104 (9.82)	48 (4.53)
72	BJD	342 (50.07)	BJP	249 (36.46)	93 (13.61)	INC	47 (6.88)	45 (6.59)
73	BJP	294 (53.65)	BJD	176 (32.12)	118 (21.53)	INC	28 (5.11)	50 (9.12)
74	BJD	523 (50.53)	BJP	427 (41.26)	96 (9.27)	INC	40 (3.86)	45 (4.35)
75	BJP	249 (40.36)	BJD	181 (29.34)	68 (11.02)	IND (AKCN)	142 (23.01)	45 (7.29)
76	BJP	325 (48.58)	BJD	213 (31.84)	112 (16.74)	INC	77 (11.51)	54 (8.07)
77	BJP	196 (33.45)	BJD	181 (30.89)	15 (2.56)	IND (AKCN)	98 (16.72)	111 (18.94)
78	BJP	290 (48.82)	BJD	200 (33.67)	90 (15.15)	INC	34 (5.72)	70 (11.78)
79	BJD	295 (42.82)	BJP	282 (40.93)	13 (1.89)	INC	45 (6.53)	67 (9.72)
80	BJP	294 (49.83)	BJD	173 (29.32)	121 (20.51)	INC	57 (9.66)	66 (11.19)
81	BJP	190 (57.4)	BJD	103 (31.12)	87 (26.28)	INC	26 (7.85)	12 (3.63)
82	BJP	218 (64.88)	BJD	82 (24.4)	136 (40.48)	IND (AKCN)	12 (3.57)	24 (7.14)
83	BJP	217 (58.97)	BJD	129 (35.05)	88 (23.92)	INC	15 (4.08)	7 (1.9)
84	BJP	339 (52.31)	BJD	246 (37.96)	93 (14.35)	INC	32 (4.94)	31 (4.78)
85	BJP	257 (46.39)	BJD	217 (39.17)	40 (7.22)	IND (AKCN)	32 (5.78)	48 (8.66)
86	BJD	317 (44.46)	BJP	259 (36.33)	58 (8.13)	IND (AKCN)	60 (8.42)	77 (10.8)
87	BJD	267 (39.67)	BJP	240 (35.66)	27 (4.01)	INC	75 (11.14)	91 (13.52)
88	BJD	291 (46.63)	BJP	206 (33.01)	85 (13.62)	IND (AKCN)	73 (11.7)	54 (8.65)
89	BJP	120 (49.18)	BJD	112 (45.9)	8 (3.28)	INC	8 (3.28)	4 (1.64)
90	IND (AKCN)	87 (29.1)	BJP	78 (26.09)	9 (3.01)	BJD	67 (22.41)	67 (22.41)
91	BJP	257 (57.88)	BJD	133 (29.95)	124 (27.93)	INC	23 (5.18)	31 (6.98)
92	BJD	274 (48.07)	BJP	251 (44.04)	23 (4.03)	INC	34 (5.96)	11 (1.93)
93	BJP	139 (36.68)	BJD	116 (30.61)	23 (6.07)	INC	65 (17.15)	59 (15.57)
94	BJP	263 (48.35)	BJD	141 (25.92)	122 (22.43)	SUCI(C)	70 (12.87)	70 (12.87)
95	BJP	273 (54.71)	BJD	146 (29.26)	127 (25.45)	INC	36 (7.21)	44 (8.82)
96	BJD	342 (45.24)	BJP	317 (41.93)	25 (3.31)	INC	64 (8.47)	33 (4.37)
97	BJP	234 (41.42)	BJD	229 (40.53)	5 (0.89)	INC	58 (10.27)	44 (7.79)
98	BJP	184 (55.42)	BJD	102 (30.72)	82 (24.7)	IND (AKCN)	24 (7.23)	22 (6.63)
99	BJP	156 (35.45)	BJD	147 (33.41)	9 (2.04)	INC	101 (22.95)	36 (8.18)
100	BJD	237 (41.15)	BJP	230 (39.93)	7 (1.22)	INC	71 (12.33)	38 (6.6)
101	BJD	303 (47.49)	BJP	219 (34.33)	84 (13.16)	INC	63 (9.87)	53 (8.31)
102	BJP	197 (40.87)	BJD	151 (31.33)	46 (9.54)	INC	103 (21.37)	31 (6.43)
103	BJP	275 (52.88)	BJD	145 (27.88)	130 (25)	INC	68 (13.08)	32 (6.15)
104	BJD	315 (46.74)	BJP	196 (29.08)	119 (17.66)	INC	116 (17.21)	47 (6.97)
105	BJD	196 (38.74)	BJP	187 (36.96)	9 (1.78)	INC	83 (16.4)	40 (7.91)

Contd....

## Socio-Economic Amenities - Rural

### Access to Education Facilities

Particulars	Number of Villages (% of Population)				
	Available	Not Available	If Not Available (Distance of Nearest Facility)		
			A	B	C
Govt. Primary School	378 (99)	13 (1)	13 (1)	0 (0)	0 (0)
Private Primary School	3 (1)	388 (99)	0 (0)	0 (0)	0 (0)
Govt. Middle School	232 (74)	159 (26)	117 (18)	42 (8)	0 (0)
Private Middle School	2 (1)	389 (99)	0 (0)	0 (0)	0 (0)
Govt. Secondary School	173 (59)	218 (41)	58 (11)	160 (30)	0 (0)
Private Secondary School	0 (0)	391 (100)	0 (0)	0 (0)	0 (0)
Govt. Senior Secondary School	11 (3)	380 (97)	0 (0)	0 (0)	148 (38)
Private Senior Secondary School	10 (6)	381 (94)	0 (0)	0 (0)	223 (53)
Govt. Arts and Science Degree College	10 (3)	381 (97)	0 (0)	0 (0)	12 (4)
Private Arts and Science Degree College	9 (6)	382 (94)	2 (0)	8 (2)	350 (86)
Govt. Engineering College	0 (0)	391 (100)	0 (0)	3 (1)	388 (99)
Private Engineering College	0 (0)	391 (100)	0 (0)	0 (0)	0 (0)
Govt. Medicine College	0 (0)	391 (100)	0 (0)	0 (0)	391 (100)
Private Medicine College	0 (0)	391 (100)	0 (0)	0 (0)	0 (0)
Govt. Management Institute	0 (0)	391 (100)	0 (0)	0 (0)	391 (100)
Private Management Institute	0 (0)	391 (100)	0 (0)	0 (0)	0 (0)
Govt. Polytechnic	0 (0)	391 (100)	0 (0)	0 (0)	5 (1)
Private Polytechnic	0 (0)	391 (100)	0 (0)	0 (0)	0 (0)
Govt. Vocational Training School/ITI	0 (0)	391 (100)	0 (0)	0 (0)	2 (1)
Private Vocational Training School/ITI	0 (0)	391 (100)	0 (0)	0 (0)	3 (1)
Govt. Non Formal Training Centre	0 (0)	391 (100)	0 (0)	0 (0)	2 (1)
Private Non Formal Training Centre	0 (0)	391 (100)	0 (0)	0 (0)	1 (0)
Govt. School For Disabled	0 (0)	391 (100)	0 (0)	0 (0)	0 (0)
Private School For Disabled	0 (0)	391 (100)	0 (0)	0 (0)	1 (0)
Government Others	0 (0)	391 (100)	0 (0)	0 (0)	0 (0)
Private Others	0 (0)	391 (100)	0 (0)	0 (0)	0 (0)

Note : Distance A : Less than 5 km; B : Between 5-10 km; C : 10+ km.; Source : Data Analysis is based on 2011 Census.

## DISCLAIMER

The Terms of Use and Disclaimer of Datanet India Private Limited (hereinafter referred to as "Datanet") for use of this analysis report of **Patna Assembly Constituency (Patna Vidhan Sabha)** :-

1. **Assembly Factbook™** is a Registered Trade Mark owned by Datanet.
2. All the maps are sketched and graphical representation only and have not been drawn to the scale and also not to represent the actual geographical area or boundary of the unit.
3. The data for the aforesaid analysis is based on authentic sources and has been culled from the various publications of Census, CSO and NSSO for district and block level data, various central and state government departments, Central & State Elections Commissions and the concerned Returning Officers' releases, Electoral Rolls, Election results and allied publications, internal assessment, surveys, estimates and analysis. Therefore, certain adjustment of data at micro level may have been done to arrive closer to the macro data.
4. Data have been provided on an "As Is" and "As AVAILABLE" basis
5. The colours shown in the maps or diagram and charts of a particular party, alliance or AC are indicative and do not represent them.
6. This publication which includes maps, sheets, graphs and data would be the property under copyright of Datanet only. The user may use these for its internal study, analysis and research purposes. It's public display, re-selling or any commercial uses by the user are not allowed.
7. Datanet has taken due care and caution in compilation and processing of data and allied information, but does not guarantee the accuracy, adequacy or completeness of any information/analysis and will be not responsible for any errors or omissions or for the results obtained from the use of such information/analysis.
8. All the contents for the publication have been culled from various authentic sources and Datanet reasonably believes such sources to be reliable, but does not make any representations, express or implied as to the accuracy or fitness of use of such information. The information or contents of the information/analysis do not constitute advice and should not be relied upon in making (or refraining from making) any decision. Any reliance placed upon the information provided by Datanet is the sole responsibility and strictly at the user's risk.
9. In no event will Datanet be liable for any damages (including, without limitation, damages for loss of business projects, or loss of profits) arising in contract, tort or otherwise from the use of or inability to use any of its contents, or from any action taken (or refrained from being taken) as a result of using the analysis or any of its contents. Datanet its directors, owners, editors, officials, employees, distributor and agents or any associate will not be liable for any errors in the information contained or any consequences arising from the use of the contents of the provided information/analysis.
10. If any provision of these terms and conditions is held invalid or illegal or unenforceable for any reason by any court of competent jurisdiction, such provision shall be severed and the remainder of provisions of the terms and conditions shall continue in full force and effect as if the Term of Use had been executed with the invalid, illegal or unenforceable provision eliminated.
11. If there are any discrepancies in the information provided, please bring it to attention of Datanet for suitable rectification measures.

**Buy Online This Complete Book At**  
**Datanet India eBooks Store**

[www.indiastatpublications.com](http://www.indiastatpublications.com)

or go directly at

[http://www.indiastatpublications.com/  
Assembly\\_factbook/Odisha/Keonjhar/ Patna](http://www.indiastatpublications.com/Assembly_factbook/Odisha/Keonjhar/Patna)



**i** **india**stat**elections**

ISBN : 978-93-6219-401-5



9 789362 119401 5