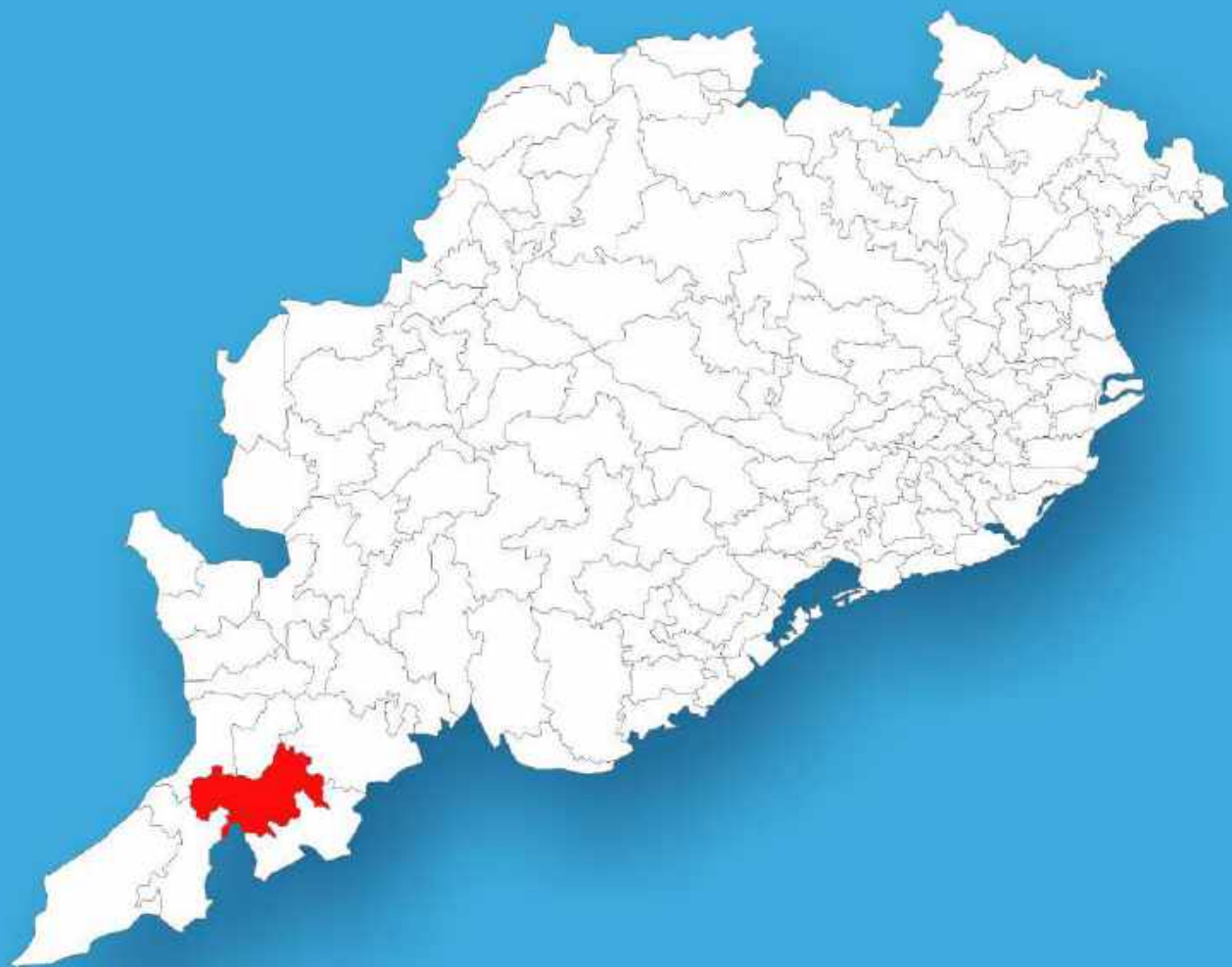




Odisha

# Assembly Factbook™

Koraput Assembly Constituency



Key Electoral Data of Koraput  
Assembly Constituency (Vidhan Sabha)

Odisha

# **Assembly Factbook™**

Koraput Assembly Constituency



Koraput Vidhan Sabha

## **Editor & Director**

Dr. R.K. Thukral

## **Research Editor**

Dr. Shafeeq Rahman

## **Compiled, Researched and Published by Datanet India Pvt. Ltd.**

D-100, 1st Floor,

Okhla Industrial Area, Phase-I,  
New Delhi- 110020.

Ph.: 91-11- 43580781-84

Email : support@indiastatpublications.com

Website : www.indiastatelections.com

## **Online Book Store :**

www.indiastatpublications.com

**Report No. :** AFB/OD-144-0125

**ISBN :** 978-93-5313-259-0

**First Edition :** January, 2018

**Eighth Updated Edition :** January, 2025

**Price :** Rs. 11500/-

US\$ 310

**© Datanet India Pvt. Ltd.**

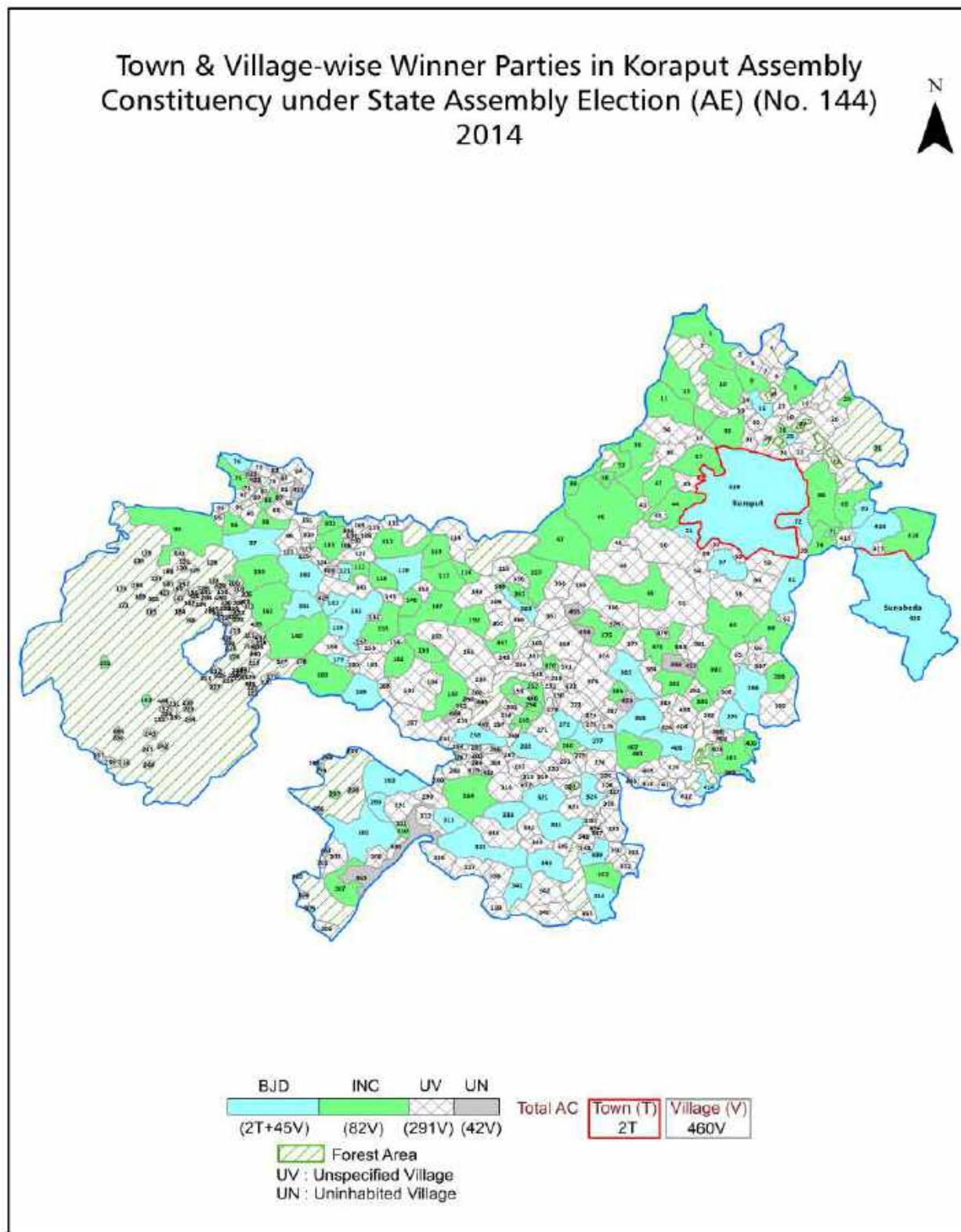
All rights reserved. No part of this book may be reproduced, stored in a retrieval system or transmitted in any form or by any means, mechanical photocopying, photographing, scanning, recording or otherwise without the prior written permission of the publisher. Please refer to Disclaimer at page no. 210 for the use of this publication.

Printed in India

No.	Particulars	Page No.
	<b>Introduction</b>	
1	Assembly Constituency - (Vidhan Sabha) at a Glance   Features of Assembly as per Delimitation Commission of India (2008)	1-2
	<b>Location and Political Maps</b>	
2	Location Map   Boundaries of Assembly Constituency - (Vidhan Sabha in District   Boundaries of Assembly Constituency under Parliamentary Constituency - (Lok Sabha)   Town & Village-wise Winner Parties- 2024-PE, 2024-AE, 2019-PE, 2019-AE, 2014-PE, 2014-AE, 2009-PE and 2009-AE	3-11
	<b>Administrative Setup (2011)</b>	
3	District   Sub-district   Towns   Villages   Inhabited Villages   Uninhabited Villages   Village Panchayat   Intermediate Panchayat	12-32
	<b>Demographics (2011)</b>	
4	Population   Households   Rural/Urban Population   Towns and Villages by Population Size   Sex Ratio (Total & 0-6 Years)   Religious Population   Social Population   Literacy Rate	33-34
	<b>Electoral Features</b>	
5	Important Dates of Last Elections Held   Electors by Gender   Service Electors   Voters   Voters Turnout   Polling Stations & Average Number of Electors per Polling Station   Electors by Age Group   Present Elected Representatives	35-40
	<b>Historical Summary Election Results</b>	
6	Vote Share of Major Parties   Winning Margin (Number & Percentage   Polarity of Parties   Summary Result of Assembly Segment of Parliamentary Elections 2024, 2019, 2014, 2009, 2004 and 1999   Summary Result of Assembly Elections 2024, 2019, 2014, 2009, 2004, 2000, 1995, 1990, 1985, 1980, 1977, 1974, 1961, 1957 and 1952	41-63
	<b>Polling Station Level Election Results</b>	
7	Name and Number of Polling Station 2024-PE, 2024-AE, 2019-PE, 2019-AE, 2014-PE, 2014-AE, 2009-PE and 2009-AE   Polling Station-wise Electors, Voters & Voters Turnout 2024-PE, 2024-AE, 2019-PE, 2019-AE, 2014-PE, 2014-AE, 2009-PE and 2009-AE   Polling Station wise Elections Results 2024-PE, 2024-AE, 2019-PE, 2019-AE, 2014-PE, 2014-AE, 2009-PE and 2009-AE	64-189
	<b>Share of Assembly Constituency</b>	
8	Share of Assembly Constituency - (Vidhan Sabha) in State, District and Parliamentary Constituency - (Lok Sabha)	190
	<b>Socio-Economic Amenities (2011)</b>	
9	Access to Administrative Units   Agricultural, Manufacturing and Industrial Commodities   Demographic Indicators   Education   Health & Manpower   Drinking Water Supply   Sanitation   Entertainment and Recreations Infrastructure   Power   Food Allocation Distribution and Marketing of Agriculture Commodities Infrastructure   Transport and Road Infrastructure   Communication   Banking and Financial Services   Land Use   Irrigation Source	192-206
10	<b>Abbreviation &amp; Sources</b>	207-208
11	<b>Disclaimer</b>	210



## Location & Political Map



## Administrative Setup

### List of Village Panchayat & Intermediate Panchayat (Block) Name - 2011

Village Name	Village Panchayat Name	Intermediate Panchayat Name
Adarikhal	Jalahanjar	Lamtaput
Alangapada	Jalahanjar	Lamtaput
Ambagandili	Chipakur	Boipariguda
Ambapada	Guneipoda	Lamtaput
AnakadeliTown	Anakadeli	Lamtaput
Andari	Kolar	Boipariguda
Ankadelli	Anakadeli	Lamtaput
Anlajodi(2)	Chipakur	Boipariguda
Anumanjar	Bilaput	Nandapur
Anungu (Enugu)	Godihanjar	Lamtaput
Arapoi	Doraguda	Boipariguda
Arna	Tikarpada	Lamtaput
Atalguda	Chandrapada	Boipariguda
Ataloguda	Majhiguda	Boipariguda
Audipoda	Thusuba	Lamtaput
Badaatala	Doraguda	Boipariguda
Badabeta	Kathapada	Boipariguda
Badakichaba	Godihanjar	Lamtaput
Badalipahar	Majhiguda	Boipariguda
Badamput	Mohadeiput	Koraput
Badamunda	Tikarpada	Lamtaput
Badasagar	Thusuba	Lamtaput
Badigada	Badigada	Lamtaput
Badnipabli	Chipakur	Boipariguda
Bagara	Kendar	Koraput
Bagaraguda	Mastiput	Koraput
Bagbeda	Dandabali	Boipariguda
Baghadola	Majhiguda	Boipariguda
Bagjhola	Chipakur	Boipariguda

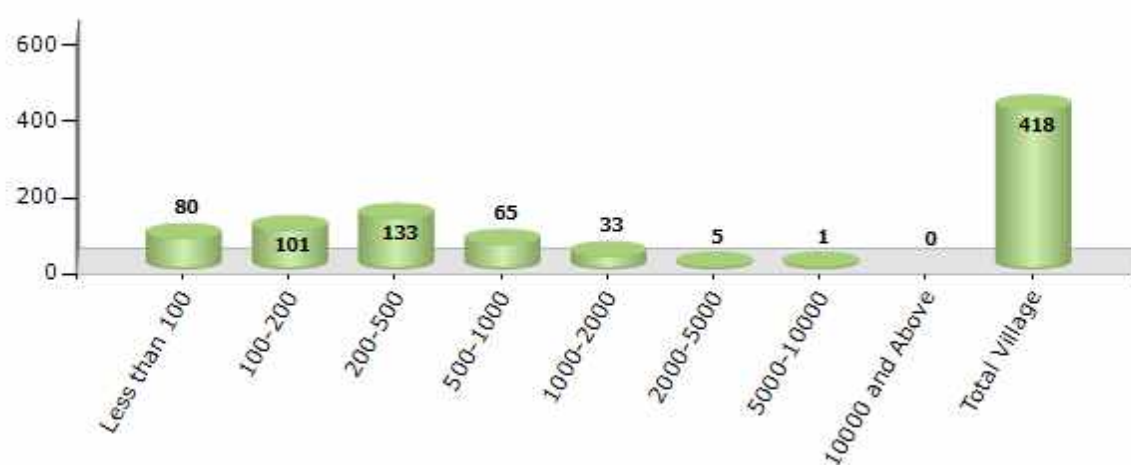
Contd....

## Demographic

### Number of Villages by Population Size - 2011

Less than 100	100-200	200-500	500-1000	1000-2000	2000-5000	5000-10000	10000 and Above	Total Village
80	101	133	65	33	5	1	0	418

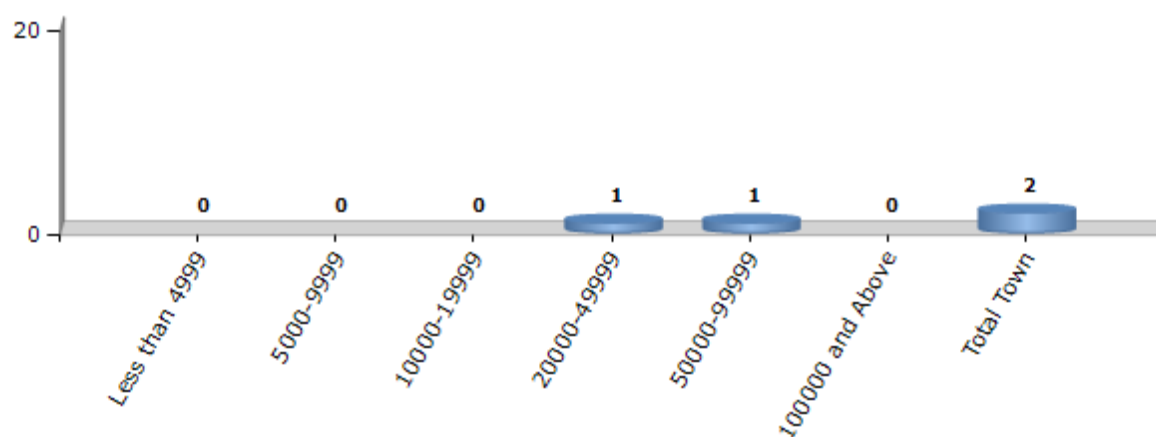
Number of Villages by Population Size - 2011



### Number of Towns by Population Size - 2011

Less than 4999	5000-9999	10000-19999	20000-49999	50000-99999	100000 and Above	Total Town
0	0	0	1	1	0	2

Number of Towns by Population Size - 2011



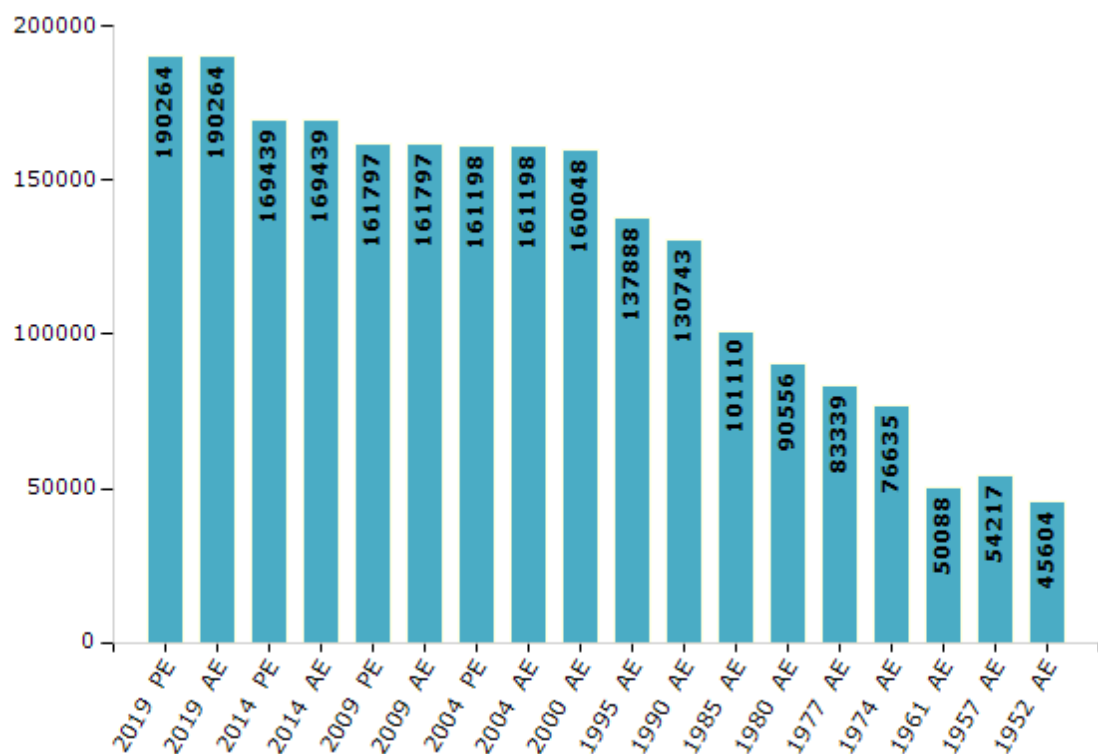
## Electoral Features

### Electors by Male & Female

Year	Male	Female	Others	Total
2019 PE	93057	97195	12	190264
2019 AE	93057	97195	12	190264
2014 PE	84060	85375	4	169439
2014 AE	84058	85377	4	169439
2009 PE	80278	81519	-	161797
2009 AE	80278	81519	-	161797
2004 PE	80595	80603	-	161198
2004 AE	80595	80603	-	161198
2000 AE	82364	77684	-	160048
1999 PE	-	-	-	-
1995 AE	71460	66428	-	137888

Year	Male	Female	Others	Total
1990 AE	70296	60447	-	130743
1985 AE	52102	49008	-	101110
1980 AE	46037	44519	-	90556
1977 AE	43870	39469	-	83339
1974 AE	39405	37230	-	76635
1971 AE	-	-	-	-
1967 AE	-	-	-	-
1961 AE	50088	0	-	50088
1957 AE	54217	0	-	54217
1952 AE	-	-	-	45604

Number of Electors



Note : AE : Assembly Election, PE : Assembly Segment of Parliamentary Election



## Historical Summary Election Results

### Summary Result of Assembly Election - 2014

Candidate Name	Party	Votes	Votes %
Krishna Chandra Sagaria	INC	50672	40.65
Raghuram Machha	BJD	45696	36.66
Jayaram Garada	BJP	13665	10.96
Balabhdra Mandi	BSP	2091	1.68
Rekhit Kuladip	APOI	1185	0.95
Rama Barik	SUCI	1182	0.95
Mangalda Khosla	AAP	1120	0.9
Manjulata Khemundu	AOP	1075	0.86
Bibek Ranjan Sethi	CPIM	962	0.77
Khagapati Khosla	IND	942	0.76
Kasti Turuk	SAMO	870	0.7
Purna Chandra Pangi	IND	861	0.69
Rohidas Nayak	IND	844	0.68
Dhanurjaya Hantal	ICPA	719	0.58
Dama Suna	SKD	574	0.46
	NOTA	2204	1.77

## Polling Station Level Election Results

### Number and Name of Polling Stations (PS) (2019 AE)

Number of Polling Stations	Name of Polling Stations	Number of Polling Stations	Name of Polling Stations
1	Dhalpur-I	22	Limbaguda
2	Dhalpur-II	23	Kenduguda
3	Dhalpur -Ii	24	Gumma
4	Kandulguda	25	Goudaguda
5	Bhaluguda	26	Baipariguda-I
6	Nandanmala	27	Baipariguda-II
7	Brahmanguda	28	Baipariguda-Iii
8	Doraguda	29	Ganiput
9	Banaguda	30	Kendupada
10	Bergaon	31	Keraput
11	Minarabali	32	Dasmantpur
12	Hatipakana	33	Kakalpoda
13	Dudhaeda	34	Gadaput
14	Jodidhara	35	Sukhuapadar
15	Chipakur	36	Doraput
16	Jaba	37	Paliguda
17	Muduliguda	38	Bhejaguda
18	Tanginiguda	39	Chandrapada
19	Tanginiguda	40	Chandrapada
20	Rampur	41	Chikima-II
21	Santeiput	42	Chikima(Kurkuti)

Contd....

## Polling Station Level Election Results

### Polling Station-wise Votes Secured by Overall Top Five Parties in Koraput Assembly in Assembly Election (AE) under Koraput Parliamentary Constituency in Odisha (2019)

Number of Polling Station	Winner - Raghu Ram Padal (BJD)	Runner-up - Krushna Kuldip (INC)	3rd - Tripurary Gorada (BJP)	4th - Bhagirathi Patnia (BSP)	5th - Naba Kishore Bagh (IND)	NOTA	Other	Total Votes Secured
36	215	284	58	6	1	2	82	648
37	109	189	48	5	6	6	15	378
38	412	285	168	21	15	28	38	967
39	419	124	117	9	7	14	10	700
40	370	112	116	9	5	10	20	642
41	99	81	88	4	1	0	7	280
42	382	329	249	32	19	67	79	1157
43	196	196	51	3	26	54	43	569
44	179	192	100	25	66	53	80	695
45	72	187	14	5	3	15	17	313
46	197	245	72	12	1	9	30	566
47	131	165	140	9	6	4	15	470
48	119	127	37	11	16	13	27	350
49	174	210	62	13	10	26	35	530
50	128	243	97	1	15	28	35	547
51	124	225	24	9	7	10	33	432
52	221	179	73	7	1	12	14	507
53	122	148	24	6	7	11	14	332
54	207	415	89	15	6	9	24	765
55	233	220	104	19	12	17	31	636
56	221	191	39	5	8	8	12	484
57	121	317	126	22	1	10	34	631
58	288	372	307	35	12	8	56	1078
59	545	316	145	14	14	21	22	1077
60	279	472	106	23	19	28	47	974
61	233	164	165	9	8	11	13	603
62	200	149	124	13	10	18	28	542
63	214	48	98	4	1	12	10	387
64	208	441	55	17	20	63	52	856
65	267	154	105	5	10	6	22	569
66	185	206	100	17	4	13	22	547
67	230	177	157	13	21	18	41	657
68	162	348	41	21	1	9	20	602
69	171	233	108	8	3	2	10	535
70	209	243	162	17	12	28	41	712

Contd....

## Polling Station Level Election Results

**Winner, Runner-up and 3rd Party Position & Winning Margin According to Polling Stations in Koraput Assembly in Assembly Election (AE) under Koraput Parliamentary Constituency in Odisha (2019)**

Polling Station Number	Winner Party	Winner Votes (%)	Runner-up Party	Runner-up Votes (%)	Winning Margin Votes (%)	Third Party	Third Party Votes (%)	Other Votes (%)
71	BJD	168 (35.74)	INC	134 (28.51)	34 (7.23)	BJP	105 (22.34)	63 (13.4)
72	BJD	411 (46.81)	INC	290 (33.03)	121 (13.78)	BJP	98 (11.16)	79 (9)
73	BJD	252 (44.29)	BJP	131 (23.02)	121 (21.27)	INC	108 (18.98)	78 (13.71)
74	BJD	241 (53.56)	INC	126 (28)	115 (25.56)	BJP	33 (7.33)	50 (11.11)
75	BJD	285 (38.72)	INC	254 (34.51)	31 (4.21)	BJP	126 (17.12)	71 (9.65)
76	BJD	324 (38.85)	INC	263 (31.53)	61 (7.32)	BJP	157 (18.82)	90 (10.79)
77	INC	279 (37.15)	BJP	237 (31.56)	42 (5.59)	BJD	192 (25.57)	43 (5.73)
78	BJD	392 (38.85)	INC	327 (32.41)	65 (6.44)	BJP	227 (22.5)	63 (6.24)
79	BJD	325 (41.99)	INC	276 (35.66)	49 (6.33)	BJP	97 (12.53)	76 (9.82)
80	BJD	401 (39.2)	INC	302 (29.52)	99 (9.68)	BJP	157 (15.35)	163 (15.93)
81	BJD	336 (43.02)	BJP	230 (29.45)	106 (13.57)	INC	156 (19.97)	59 (7.55)
82	BJD	248 (48.92)	BJP	116 (22.88)	132 (26.04)	INC	82 (16.17)	61 (12.03)
83	INC	284 (40.75)	BJD	250 (35.87)	34 (4.88)	BSP	50 (7.17)	113 (16.21)
84	BJD	253 (66.75)	INC	64 (16.89)	189 (49.86)	BJP	36 (9.5)	26 (6.86)
85	NV	NV (NV)	NV	NV (NV)	NV (NV)	NV	NV (NV)	NV (NV)
86	BJD	272 (49.45)	INC	146 (26.55)	126 (22.9)	BJP	90 (16.36)	42 (7.64)
87	INC	238 (42.73)	BJD	198 (35.55)	40 (7.18)	BJP	78 (14)	43 (7.72)
88	INC	267 (49.54)	BJD	109 (20.22)	158 (29.32)	BJP	61 (11.32)	102 (18.92)
89	INC	268 (39.88)	BJD	212 (31.55)	56 (8.33)	BJP	69 (10.27)	123 (18.3)
90	INC	218 (43)	BJD	182 (35.9)	36 (7.1)	BJP	78 (15.38)	29 (5.72)
91	INC	239 (42.75)	BJD	135 (24.15)	104 (18.6)	BJP	94 (16.82)	91 (16.28)
92	INC	194 (42.08)	BJP	121 (26.25)	73 (15.83)	BJD	97 (21.04)	49 (10.63)
93	INC	132 (36.77)	BJD	108 (30.08)	24 (6.69)	BJP	80 (22.28)	39 (10.86)
94	BJD	284 (32.49)	INC	259 (29.63)	25 (2.86)	BJP	228 (26.09)	103 (11.78)
95	BJD	312 (44.89)	INC	215 (30.94)	97 (13.95)	BJP	61 (8.78)	107 (15.4)
96	BJD	394 (41.3)	INC	228 (23.9)	166 (17.4)	BJP	207 (21.7)	125 (13.1)
97	BJD	276 (44.09)	INC	153 (24.44)	123 (19.65)	BJP	131 (20.93)	66 (10.54)
98	BJD	307 (45.96)	INC	282 (42.22)	25 (3.74)	BJP	34 (5.09)	45 (6.74)
99	BJD	443 (40.2)	INC	301 (27.31)	142 (12.89)	BJP	226 (20.51)	132 (11.98)
100	INC	216 (54.14)	BJD	115 (28.82)	101 (25.32)	BJP	42 (10.53)	26 (6.52)
101	BJD	245 (31.82)	INC	226 (29.35)	19 (2.47)	BJP	113 (14.68)	186 (24.16)
102	INC	175 (38.72)	BJD	132 (29.2)	43 (9.52)	BJP	93 (20.58)	52 (11.5)
103	INC	179 (39.87)	BJD	141 (31.4)	38 (8.47)	BSP	56 (12.47)	73 (16.26)
104	BJD	305 (35.55)	INC	271 (31.59)	34 (3.96)	BJP	123 (14.34)	159 (18.53)
105	INC	291 (39.01)	BJD	235 (31.5)	56 (7.51)	BJP	125 (16.76)	95 (12.73)

Contd....

## Socio-Economic Amenities - Rural

### Access to Education Facilities

Particulars	Number of Villages (% of Population)				
	Available	Not Available	If Not Available (Distance of Nearest Facility)		
			A	B	C
Govt. Primary School	288 (89)	130 (11)	97 (8)	25 (2)	5 (0)
Private Primary School	5 (1)	413 (99)	0 (0)	0 (0)	0 (0)
Govt. Middle School	71 (26)	347 (74)	172 (41)	154 (30)	16 (2)
Private Middle School	2 (1)	416 (99)	0 (0)	1 (0)	0 (0)
Govt. Secondary School	22 (12)	396 (88)	134 (36)	193 (43)	0 (0)
Private Secondary School	2 (1)	416 (99)	31 (4)	37 (5)	0 (0)
Govt. Senior Secondary School	2 (1)	416 (99)	8 (3)	41 (11)	83 (22)
Private Senior Secondary School	2 (2)	416 (98)	25 (9)	80 (17)	177 (35)
Govt. Arts and Science Degree College	1 (0)	417 (100)	4 (2)	34 (9)	288 (67)
Private Arts and Science Degree College	1 (2)	417 (98)	9 (3)	37 (7)	44 (9)
Govt. Engineering College	0 (0)	418 (100)	0 (0)	0 (0)	0 (0)
Private Engineering College	1 (0)	417 (100)	1 (2)	1 (0)	415 (98)
Govt. Medicine College	0 (0)	418 (100)	0 (0)	0 (0)	417 (100)
Private Medicine College	0 (0)	418 (100)	0 (0)	0 (0)	0 (0)
Govt. Management Institute	0 (0)	418 (100)	0 (0)	0 (0)	0 (0)
Private Management Institute	0 (0)	418 (100)	0 (0)	0 (0)	418 (100)
Govt. Polytechnic	0 (0)	418 (100)	0 (0)	0 (0)	79 (16)
Private Polytechnic	1 (0)	417 (100)	7 (2)	20 (4)	238 (62)
Govt. Vocational Training School/ITI	0 (0)	418 (100)	0 (0)	2 (0)	180 (40)
Private Vocational Training School/ITI	0 (0)	418 (100)	16 (5)	70 (12)	133 (38)
Govt. Non Formal Training Centre	0 (0)	418 (100)	2 (1)	24 (5)	253 (56)
Private Non Formal Training Centre	0 (0)	418 (100)	1 (0)	1 (0)	57 (20)
Govt. School For Disabled	0 (0)	418 (100)	5 (3)	33 (9)	338 (79)
Private School For Disabled	0 (0)	418 (100)	0 (0)	0 (0)	12 (3)
Government Others	0 (0)	418 (100)	3 (1)	6 (3)	5 (2)
Private Others	0 (0)	418 (100)	0 (0)	0 (0)	1 (0)

Note : Distance A : Less than 5 km; B : Between 5-10 km; C : 10+ km.; Source : Data Analysis is based on 2011 Census.

## DISCLAIMER

The Terms of Use and Disclaimer of Datanet India Private Limited (hereinafter referred to as "Datanet") for use of this analysis report of **Koraput Assembly Constituency (Koraput Vidhan Sabha)** :-

1. **Assembly Factbook™** is a Registered Trade Mark owned by Datanet.
2. All the maps are sketched and graphical representation only and have not been drawn to the scale and also not to represent the actual geographical area or boundary of the unit.
3. The data for the aforesaid analysis is based on authentic sources and has been culled from the various publications of Census, CSO and NSSO for district and block level data, various central and state government departments, Central & State Elections Commissions and the concerned Returning Officers' releases, Electoral Rolls, Election results and allied publications, internal assessment, surveys, estimates and analysis. Therefore, certain adjustment of data at micro level may have been done to arrive closer to the macro data.
4. Data have been provided on an "As Is" and "As AVAILABLE" basis
5. The colours shown in the maps or diagram and charts of a particular party, alliance or AC are indicative and do not represent them.
6. This publication which includes maps, sheets, graphs and data would be the property under copyright of Datanet only. The user may use these for its internal study, analysis and research purposes. It's public display, re-selling or any commercial uses by the user are not allowed.
7. Datanet has taken due care and caution in compilation and processing of data and allied information, but does not guarantee the accuracy, adequacy or completeness of any information/analysis and will be not responsible for any errors or omissions or for the results obtained from the use of such information/analysis.
8. All the contents for the publication have been culled from various authentic sources and Datanet reasonably believes such sources to be reliable, but does not make any representations, express or implied as to the accuracy or fitness of use of such information. The information or contents of the information/analysis do not constitute advice and should not be relied upon in making (or refraining from making) any decision. Any reliance placed upon the information provided by Datanet is the sole responsibility and strictly at the user's risk.
9. In no event will Datanet be liable for any damages (including, without limitation, damages for loss of business projects, or loss of profits) arising in contract, tort or otherwise from the use of or inability to use any of its contents, or from any action taken (or refrained from being taken) as a result of using the analysis or any of its contents. Datanet its directors, owners, editors, officials, employees, distributor and agents or any associate will not be liable for any errors in the information contained or any consequences arising from the use of the contents of the provided information/analysis.
10. If any provision of these terms and conditions is held invalid or illegal or unenforceable for any reason by any court of competent jurisdiction, such provision shall be severed and the remainder of provisions of the terms and conditions shall continue in full force and effect as if the Term of Use had been executed with the invalid, illegal or unenforceable provision eliminated.
11. If there are any discrepancies in the information provided, please bring it to attention of Datanet for suitable rectification measures.



**Buy Online This Complete Book At  
Datanet India eBooks Store**

**[www.indiastatpublications.com](http://www.indiastatpublications.com)**

**or go directly at**

**[http://www.indiastatpublications.com/  
Assembly\\_factbook/Odisha/Koraput/](http://www.indiastatpublications.com/Assembly_factbook/Odisha/Koraput/) Koraput**

 **indiaSTAT**elections

ISBN : 978-93-5313-259-0



9 789353 132590