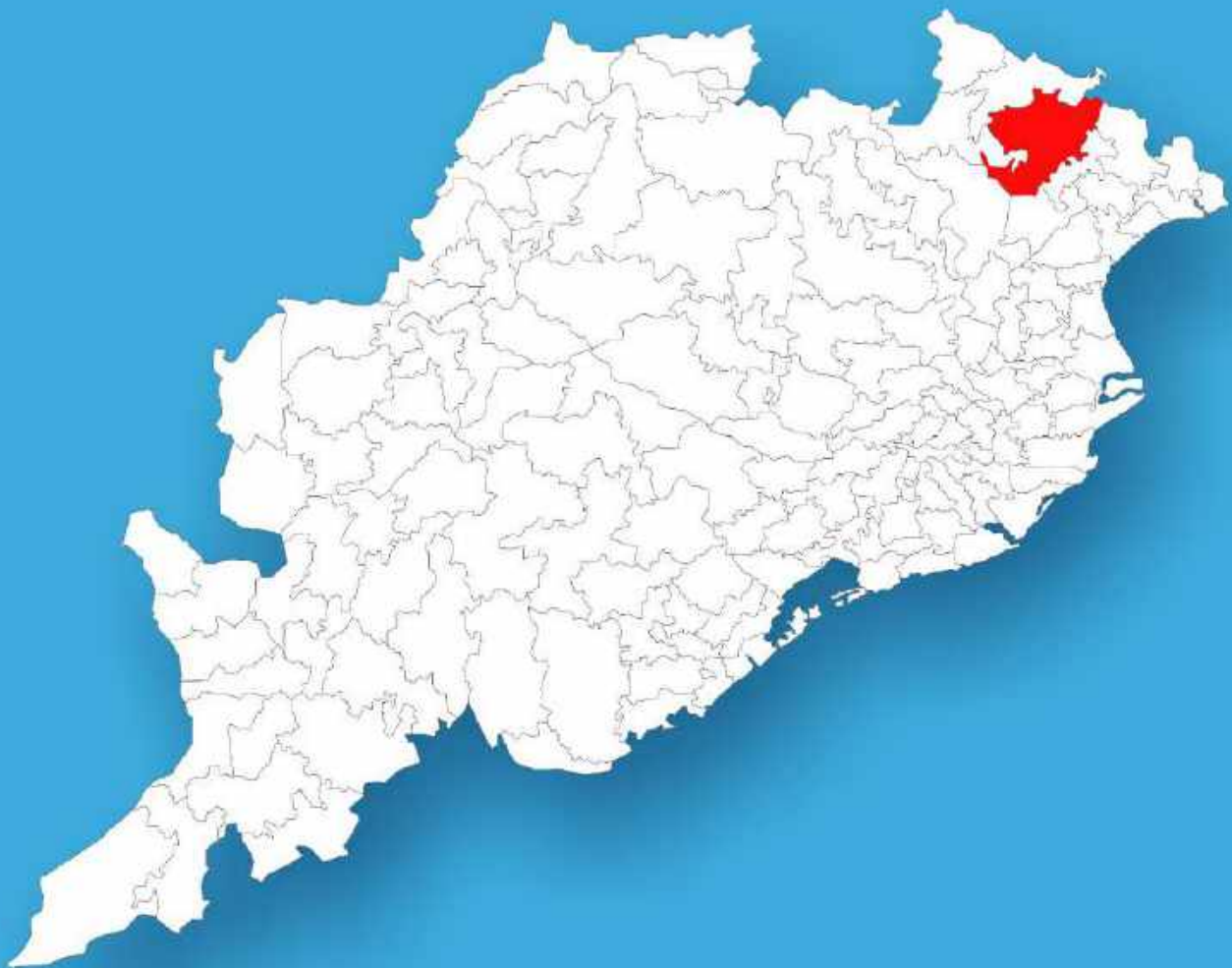




Odisha

Assembly Factbook™

Bangriposi Assembly Constituency



Key Electoral Data of Bangriposi
Assembly Constituency (Vidhan Sabha)

Odisha

Assembly Factbook™

Bangriposi Assembly Constituency



Bangriposi Vidhan Sabha

Editor & Director

Dr. R.K. Thukral

Research Editor

Dr. Shafeeq Rahman

Compiled, Researched and Published by Datanet India Pvt. Ltd.

D-100, 1st Floor,

Okhla Industrial Area, Phase-I,
New Delhi- 110020.

Ph.: 91-11- 43580781-84

Email : support@indiastatpublications.com

Website : www.indiastatelections.com

Online Book Store :

www.indiastatpublications.com

Report No. : AFB/OD-029-0125

ISBN : 978-93-5313-214-9

First Edition : January, 2018

Eighth Updated Edition : January, 2025

Price : Rs. 11500/-

US\$ 310

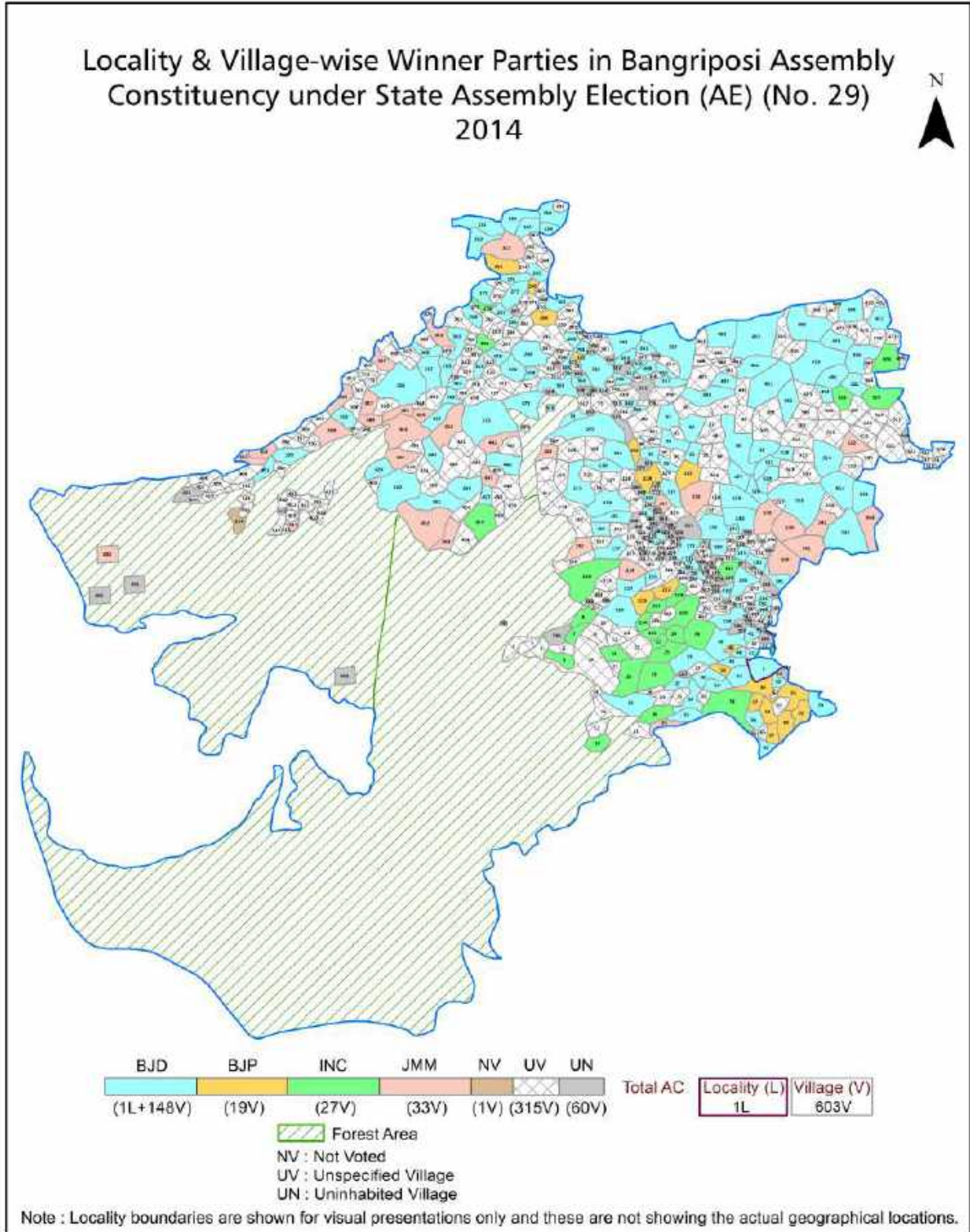
© **Datanet India Pvt. Ltd.**

All rights reserved. No part of this book may be reproduced, stored in a retrieval system or transmitted in any form or by any means, mechanical photocopying, photographing, scanning, recording or otherwise without the prior written permission of the publisher. Please refer to Disclaimer at page no. 245 for the use of this publication.

Printed in India

No.	Particulars	Page No.
	Introduction	
1	Assembly Constituency - (Vidhan Sabha) at a Glance Features of Assembly as per Delimitation Commission of India (2008)	1-2
	Location and Political Maps	
2	Location Map Boundaries of Assembly Constituency - (Vidhan Sabha) in District Boundaries of Assembly Constituency under Parliamentary Constituency - (Lok Sabha) Locality & Village-wise Winner Parties- 2024-PE, 2024-AE, 2019-PE, 2019-AE, 2014-PE, 2014-AE, 2009-PE and 2009-AE	3-11
	Administrative Setup (2011)	
3	District Sub-district Towns Villages Inhabited Villages Uninhabited Villages Village Panchayat Intermediate Panchayat	12-39
	Demographics (2011)	
4	Population Households Rural/Urban Population Villages by Population Size Sex Ratio (Total & 0-6 Years) Religious Population Social Population Literacy Rate	40-41
	Electoral Features	
5	Important Dates of Last Elections Held Electors by Gender Service Electors Voters Voters Turnout Polling Stations & Average Number of Electors per Polling Station Electors by Age Group Present Elected Representatives	42-47
	Historical Summary Election Results	
6	Vote Share of Major Parties Winning Margin (Number & Percentage Polarity of Parties Summary Result of Assembly Segment of Parliamentary Elections 2024, 2019, 2014, 2009, 2004 and 1999 Summary Result of Assembly Elections 2024, 2019, 2014, 2009, 2004, 2000, 1995, 1990, 1985, 1980, 1977, 1974, 1971, 1967, 1961, 1957 and 1952	48-72
	Polling Station Level Election Results	
7	Name and Number of Polling Station 2024-PE, 2024-AE, 2019-PE, 2019-AE, 2014-PE, 2014-AE, 2009-PE and 2009-AE Polling Station-wise Electors, Voters & Voters Turnout 2024-PE, 2024-AE, 2019-PE, 2019-AE, 2014-PE, 2014-AE, 2009-PE and 2009-AE Polling Station wise Elections Results 2024-PE, 2024-AE, 2019-PE, 2019-AE, 2014-PE, 2014-AE, 2009-PE and 2009-AE	73-224
	Share of Assembly Constituency	
8	Share of Assembly Constituency - (Vidhan Sabha) in State, District and Parliamentary Constituency - (Lok Sabha)	225
	Socio-Economic Amenities (2011)	
9	Access to Administrative Units Agricultural, Manufacturing and Industrial Commodities Demographic Indicators Education Health & Manpower Drinking Water Supply Sanitation Entertainment and Recreations Infrastructure Power Food Allocation Distribution and Marketing of Agriculture Commodities Infrastructure Transport and Road Infrastructure Communication Banking and Financial Services Land Use Irrigation Source	227-241
10	Abbreviation & Sources	242-243
11	Disclaimer	245

Location & Political Map



Administrative Setup

List of Village Panchayat & Intermediate Panchayat (Block) Name - 2011

Village Name	Village Panchayat Name	Intermediate Panchayat Name
Adapal	Patihinja	Koliana
Adasilibadhali	Parulia	Koliana
Adiamara	Anlakuda	Suliapada
Akarsila	Kalapathar	Shamakhunta
Aktapal	Chandanpur	Bangiriposi
Alapani	Sorisapal	Bangiriposi
Alubani	Kalapathar	Shamakhunta
Ambadali	Bhaluki	Shamakhunta
Ambadiha	Gangraj	Koliana
Ambaduvi	Sindurgoura	Shamakhunta
Ambapunja	Purnapani	Koliana
Ambasikida	Sirisbani	Shamakhunta
Ambua	Koliana	Koliana
Amdapani	Sorisapal	Bangiriposi
Andarjoda	Anlakuda	Suliapada
Andhari	Dumurdiha	Koliana
Andola	Nafri	Bangiriposi
Angargadia	Kuchei	Koliana
Aniapal	Kuchei	Koliana
Anlagunja	Shyamsundarpur	Bangiriposi
Anlajodi	Shyamsundarpur	Bangiriposi
Arakhpal	Sindurgoura	Shamakhunta
Asana	Golamundakata	Bangiriposi
Asanbani	Bhaluki	Shamakhunta
Asanbani	Shyamsundarpur	Bangiriposi
Asanjoda	Dumurdiha	Koliana
ASanJoda	Kuchei	Koliana
Asansikar	Kusumbandh	Bangiriposi
Asna	Banakati	Bangiriposi

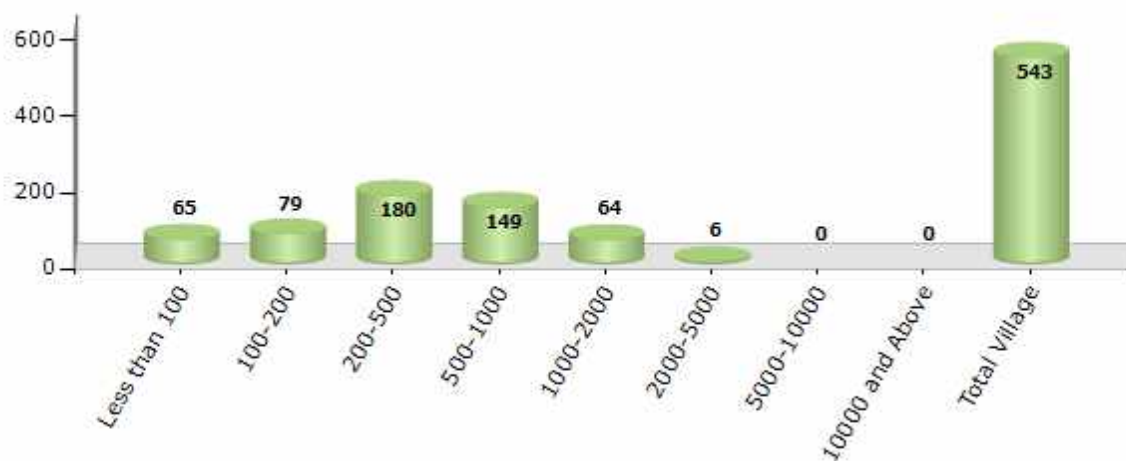
Contd....

Demographic

Number of Villages by Population Size - 2011

Less than 100	100-200	200-500	500-1000	1000-2000	2000-5000	5000-10000	10000 and Above	Total Village
65	79	180	149	64	6	0	0	543

Number of Villages by Population Size - 2011

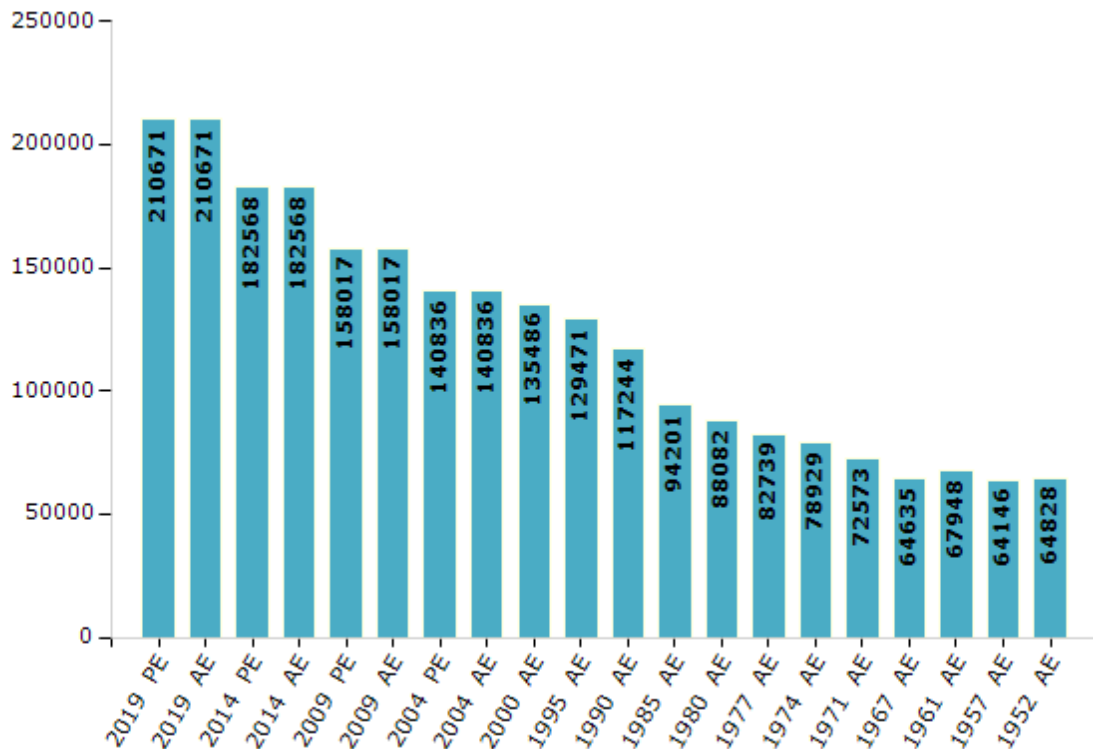


Electoral Features

Electors by Male & Female

Year	Male	Female	Others	Total	Year	Male	Female	Others	Total
2019 PE	105499	105166	6	210671	1990 AE	59206	58038	-	117244
2019 AE	105499	105166	6	210671	1985 AE	46322	47879	-	94201
2014 PE	93127	89440	1	182568	1980 AE	44402	43680	-	88082
2014 AE	93127	89440	1	182568	1977 AE	40604	42135	-	82739
2009 PE	79994	78023	-	158017	1974 AE	38642	40287	-	78929
2009 AE	79994	78023	-	158017	1971 AE	37932	34641	-	72573
2004 PE	70346	70490	-	140836	1967 AE	64635	0	-	64635
2004 AE	70346	70490	-	140836	1961 AE	67948	0	-	67948
2000 AE	68389	67097	-	135486	1957 AE	64146	0	-	64146
1999 PE	-	-	-	-	1952 AE	-	-	-	64828
1995 AE	65530	63941	-	129471					

Number of Electors



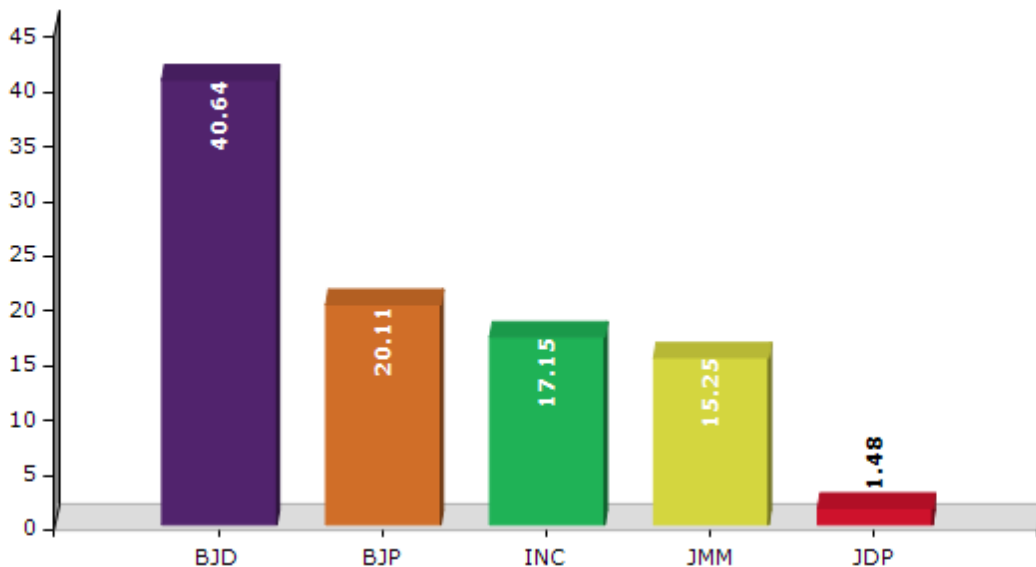
Note : AE : Assembly Election, PE : Assembly Segment of Parliamentary Election

Historical Summary Election Results

Summary Result of Assembly Election - 2014

Candidate Name	Party	Votes	Votes %
Sudam Marndi	BJD	62406	40.64
Purusotam Naik	BJP	30877	20.11
Sundar Mohan Singh	INC	26327	17.15
Ajen Murmu	JMM	23411	15.25
Laduram Soren	JDP	2265	1.48
Kanhu Soren	AOP	1539	1
Laxman Hansdah	BSP	1199	0.78
Dharmendra Munda	AAP	1145	0.75
Gobinda Hembram	SKD	973	0.63
Balaram Marndi	OJM	894	0.58
	NOTA	2508	1.63

Votes Percentage of Top Parties - 2014



Polling Station Level Election Results

Number and Name of Polling Stations (PS) (2019 AE)

Number of Polling Stations	Name of Polling Stations	Number of Polling Stations	Name of Polling Stations
1	Chandanapur	22	Bangriposi
2	Chandanapur	23	Bholagadia
3	Bedhakudar	24	Nishchinta
4	Jogibandh	25	Dasisol
5	Nuagan	26	Chuapani
6	Khadipahadi	27	Sanapathar Kham
7	Dighi	28	Talabandh
8	Dorakantia	29	Chorabandh
9	Baunshabudi	30	Ghatakuanri
10	Managadmundhakata	31	Domuhani
11	Nitei	32	Chandabil
12	Banakati	33	Basantapur
13	Gosanipal	34	Hinjili
14	Gosanipal	35	Gedrasahi
15	Sarasaposi	36	Kusumabandh
16	Manada	37	Kusumabandh
17	Hanada	38	Chakidi
18	Hanada	39	Fuljharan
19	Majhigan	40	Sorishapal
20	Kaliami	41	Ghatiduba
21	Mahulabarei	42	Astabedha

Contd....

Polling Station Level Election Results

Polling Station-wise Votes Secured by Overall Top Five Parties in Bangriposi Assembly in Assembly Election (AE) under Mayurbhanj Parliamentary Constituency in Odisha (2019)

Number of Polling Station	Winner - Sudam Marndi (BJD)	Runner-up - Sugda Murmu (BJP)	3rd - Fagu Hansdah (JMM)	4th - Purusotam Naik (IND)	5th - Bharat Chandra Singh (BMUP)	NOTA	Other	Total Votes Secured
36	291	380	139	7	5	19	55	896
37	327	421	6	1	0	3	14	772
38	238	79	191	4	2	12	94	620
39	146	36	63	0	4	2	42	293
40	199	102	198	8	5	3	24	539
41	184	60	175	1	6	12	25	463
42	383	261	100	9	8	7	34	802
43	51	48	177	0	11	5	74	366
44	105	88	87	3	0	6	16	305
45	101	170	18	1	1	5	10	306
46	382	195	277	9	3	9	48	923
47	164	234	113	52	8	14	48	633
48	282	95	159	7	5	8	51	607
49	172	154	201	3	6	16	41	593
50	228	112	69	7	1	14	28	459
51	203	222	112	5	2	5	25	574
52	199	74	178	0	3	2	18	474
53	101	32	153	3	4	0	17	310
54	294	147	166	3	3	10	136	759
55	295	67	35	0	2	2	22	423
56	372	246	101	11	2	10	126	868
57	214	93	47	1	21	0	7	383
58	355	94	77	8	2	12	30	578
59	160	64	333	6	4	6	57	630
60	457	341	46	26	3	14	51	938
61	166	214	118	1	3	5	18	525
62	658	118	90	4	3	12	83	968
63	167	34	126	3	4	4	58	396
64	242	415	10	2	1	9	14	693
65	386	481	17	18	4	14	59	979
66	388	279	22	7	2	14	32	744
67	261	147	16	8	4	9	16	461
68	152	186	2	6	1	6	42	395
69	412	365	71	14	3	22	32	919
70	356	363	22	1	2	7	25	776

Contd....

Polling Station Level Election Results

Winner, Runner-up and 3rd Party Position & Winning Margin According to Polling Stations in Bangriposi Assembly in Assembly Election (AE) under Mayurbhanj Parliamentary Constituency in Odisha (2019)

Polling Station Number	Winner Party	Winner Votes (%)	Runner-up Party	Runner-up Votes (%)	Winning Margin Votes (%)	Third Party	Third Party Votes (%)	Other Votes (%)
71	BJD	227 (47.69)	BJP	176 (36.97)	51 (10.72)	JMM	53 (11.13)	20 (4.2)
72	BJD	461 (53.48)	BJP	223 (25.87)	238 (27.61)	IND (PN)	130 (15.08)	48 (5.57)
73	BJD	186 (43.46)	BJP	135 (31.54)	51 (11.92)	IND (PN)	62 (14.49)	45 (10.51)
74	BJD	254 (48.2)	BJP	142 (26.94)	112 (21.26)	JMM	87 (16.51)	44 (8.35)
75	BJD	335 (50.6)	BJP	317 (47.89)	18 (2.71)	skd	4 (0.6)	6 (0.91)
76	BJD	462 (58.11)	BJP	315 (39.62)	147 (18.49)	skd	7 (0.88)	11 (1.38)
77	BJD	527 (64.27)	BJP	264 (32.2)	263 (32.07)	SUCI(C)	6 (0.73)	23 (2.8)
78	BJD	399 (45.7)	BJP	375 (42.96)	24 (2.74)	JMM	51 (5.84)	48 (5.5)
79	BJP	269 (35.12)	BJD	241 (31.46)	28 (3.66)	SUCI(C)	175 (22.85)	81 (10.57)
80	BJD	284 (34.85)	BJP	225 (27.61)	59 (7.24)	IND (JKS)	115 (14.11)	191 (23.44)
81	BJD	231 (38.37)	BJP	187 (31.06)	44 (7.31)	JMM	109 (18.11)	75 (12.46)
82	BJD	444 (48)	BJP	432 (46.7)	12 (1.3)	JKPP	6 (0.65)	43 (4.65)
83	BJP	164 (49.1)	BJD	120 (35.93)	44 (13.17)	IND (JKS)	13 (3.89)	37 (11.08)
84	BJP	437 (53.75)	BJD	350 (43.05)	87 (10.7)	JMM	6 (0.74)	20 (2.46)
85	BJD	229 (54.14)	BJP	169 (39.95)	60 (14.19)	IND (PN)	9 (2.13)	16 (3.78)
86	BJP	451 (52.02)	BJD	377 (43.48)	74 (8.54)	JMM	10 (1.15)	29 (3.34)
87	BJD	210 (51.22)	BJP	169 (41.22)	41 (10)	JMM	11 (2.68)	20 (4.88)
88	BJD	420 (51.98)	BJP	361 (44.68)	59 (7.3)	SUCI(C)	6 (0.74)	21 (2.6)
89	BJP	228 (50.33)	BJD	209 (46.14)	19 (4.19)	SUCI(C)	4 (0.88)	12 (2.65)
90	BJP	300 (55.35)	BJD	212 (39.11)	88 (16.24)	IND (RNS)	6 (1.11)	24 (4.43)
91	BJD	221 (50.8)	BJP	174 (40)	47 (10.8)	JMM	9 (2.07)	31 (7.13)
92	BJP	352 (50.43)	BJD	287 (41.12)	65 (9.31)	SUCI(C)	14 (2.01)	45 (6.45)
93	BJP	364 (44.44)	BJD	361 (44.08)	3 (0.36)	JMM	37 (4.52)	57 (6.96)
94	BJP	303 (44.36)	BJD	245 (35.87)	58 (8.49)	IND (PN)	80 (11.71)	55 (8.05)
95	BJD	239 (48.09)	BJP	202 (40.64)	37 (7.45)	JMM	33 (6.64)	23 (4.63)
96	BJD	445 (54.07)	BJP	330 (40.1)	115 (13.97)	JMM	23 (2.79)	25 (3.04)
97	BJD	367 (47.35)	BJP	308 (39.74)	59 (7.61)	JMM	36 (4.65)	64 (8.26)
98	BJP	189 (48.21)	BJD	169 (43.11)	20 (5.1)	JMM	15 (3.83)	19 (4.85)
99	BJD	422 (48.79)	BJP	298 (34.45)	124 (14.34)	IND (JKS)	57 (6.59)	88 (10.17)
100	BJP	165 (46.22)	BJD	144 (40.34)	21 (5.88)	IND (JKS)	29 (8.12)	19 (5.32)
101	BJD	450 (50.79)	BJP	403 (45.49)	47 (5.3)	JMM	13 (1.47)	20 (2.26)
102	BJD	416 (53.68)	BJP	310 (40)	106 (13.68)	JMM	22 (2.84)	27 (3.48)
103	BJD	364 (51.12)	BJP	292 (41.01)	72 (10.11)	IND (PN)	14 (1.97)	42 (5.9)
104	BJD	505 (72.25)	BJP	79 (11.3)	426 (60.95)	JMM	46 (6.58)	69 (9.87)
105	BJD	276 (51.21)	BJP	106 (19.67)	170 (31.54)	JMM	62 (11.5)	95 (17.63)

Contd....

Socio-Economic Amenities - Rural

Access to Education Facilities

Particulars	Number of Villages (% of Population)				
	Available	Not Available	If Not Available (Distance of Nearest Facility)		
			A	B	C
Govt. Primary School	379 (90)	164 (10)	151 (9)	6 (0)	1 (0)
Private Primary School	68 (21)	475 (79)	0 (0)	0 (0)	0 (0)
Govt. Middle School	157 (51)	386 (49)	166 (23)	185 (22)	31 (3)
Private Middle School	65 (21)	478 (79)	0 (0)	0 (0)	0 (0)
Govt. Secondary School	46 (18)	497 (82)	259 (45)	123 (16)	0 (0)
Private Secondary School	61 (20)	482 (80)	66 (12)	30 (4)	0 (0)
Govt. Senior Secondary School	3 (1)	540 (99)	44 (9)	50 (9)	95 (15)
Private Senior Secondary School	7 (3)	536 (97)	70 (17)	128 (25)	147 (22)
Govt. Arts and Science Degree College	2 (1)	541 (99)	35 (7)	80 (15)	138 (25)
Private Arts and Science Degree College	4 (2)	539 (98)	31 (7)	97 (18)	156 (25)
Govt. Engineering College	0 (0)	543 (100)	0 (0)	0 (0)	0 (0)
Private Engineering College	1 (0)	542 (100)	1 (0)	5 (1)	536 (99)
Govt. Medicine College	0 (0)	543 (100)	2 (1)	0 (0)	541 (99)
Private Medicine College	0 (0)	543 (100)	0 (0)	0 (0)	0 (0)
Govt. Management Institute	0 (0)	543 (100)	2 (0)	53 (11)	488 (88)
Private Management Institute	0 (0)	543 (100)	0 (0)	0 (0)	0 (0)
Govt. Polytechnic	0 (0)	543 (100)	3 (1)	25 (3)	162 (27)
Private Polytechnic	0 (0)	543 (100)	4 (1)	17 (4)	140 (27)
Govt. Vocational Training School/ITI	1 (0)	542 (100)	3 (1)	39 (7)	155 (30)
Private Vocational Training School/ITI	4 (1)	539 (99)	47 (10)	77 (13)	106 (18)
Govt. Non Formal Training Centre	0 (0)	543 (100)	2 (0)	29 (5)	253 (46)
Private Non Formal Training Centre	0 (0)	543 (100)	1 (0)	5 (1)	46 (8)
Govt. School For Disabled	0 (0)	543 (100)	1 (0)	34 (6)	250 (45)
Private School For Disabled	0 (0)	543 (100)	0 (0)	3 (0)	47 (10)
Government Others	0 (0)	543 (100)	0 (0)	0 (0)	0 (0)
Private Others	2 (0)	541 (100)	0 (0)	0 (0)	2 (1)

Note : Distance A : Less than 5 km; B : Between 5-10 km; C : 10+ km.; Source : Data Analysis is based on 2011 Census.

DISCLAIMER

The Terms of Use and Disclaimer of Datanet India Private Limited (hereinafter referred to as "Datanet") for use of this analysis report of **Bangriposi Assembly Constituency (Bangriposi Vidhan Sabha)** :-

1. **Assembly Factbook™** is a Registered Trade Mark owned by Datanet.
2. All the maps are sketched and graphical representation only and have not been drawn to the scale and also not to represent the actual geographical area or boundary of the unit.
3. The data for the aforesaid analysis is based on authentic sources and has been culled from the various publications of Census, CSO and NSSO for district and block level data, various central and state government departments, Central & State Elections Commissions and the concerned Returning Officers' releases, Electoral Rolls, Election results and allied publications, internal assessment, surveys, estimates and analysis. Therefore, certain adjustment of data at micro level may have been done to arrive closer to the macro data.
4. Data have been provided on an "As Is" and "As AVAILABLE" basis
5. The colours shown in the maps or diagram and charts of a particular party, alliance or AC are indicative and do not represent them.
6. This publication which includes maps, sheets, graphs and data would be the property under copyright of Datanet only. The user may use these for its internal study, analysis and research purposes. It's public display, re-selling or any commercial uses by the user are not allowed.
7. Datanet has taken due care and caution in compilation and processing of data and allied information, but does not guarantee the accuracy, adequacy or completeness of any information/analysis and will be not responsible for any errors or omissions or for the results obtained from the use of such information/analysis.
8. All the contents for the publication have been culled from various authentic sources and Datanet reasonably believes such sources to be reliable, but does not make any representations, express or implied as to the accuracy or fitness of use of such information. The information or contents of the information/analysis do not constitute advice and should not be relied upon in making (or refraining from making) any decision. Any reliance placed upon the information provided by Datanet is the sole responsibility and strictly at the user's risk.
9. In no event will Datanet be liable for any damages (including, without limitation, damages for loss of business projects, or loss of profits) arising in contract, tort or otherwise from the use of or inability to use any of its contents, or from any action taken (or refrained from being taken) as a result of using the analysis or any of its contents. Datanet its directors, owners, editors, officials, employees, distributor and agents or any associate will not be liable for any errors in the information contained or any consequences arising from the use of the contents of the provided information/analysis.
10. If any provision of these terms and conditions is held invalid or illegal or unenforceable for any reason by any court of competent jurisdiction, such provision shall be severed and the remainder of provisions of the terms and conditions shall continue in full force and effect as if the Term of Use had been executed with the invalid, illegal or unenforceable provision eliminated.
11. If there are any discrepancies in the information provided, please bring it to attention of Datanet for suitable rectification measures.

Buy Online This Complete Book At
Datanet India eBooks Store

www.indiastatpublications.com

or go directly at

[http://www.indiastatpublications.com/
Assembly_factbook/Odisha/Mayurbhanj/ Bangriposi](http://www.indiastatpublications.com/Assembly_factbook/Odisha/Mayurbhanj/Bangriposi)

 **india**stat**elections**

