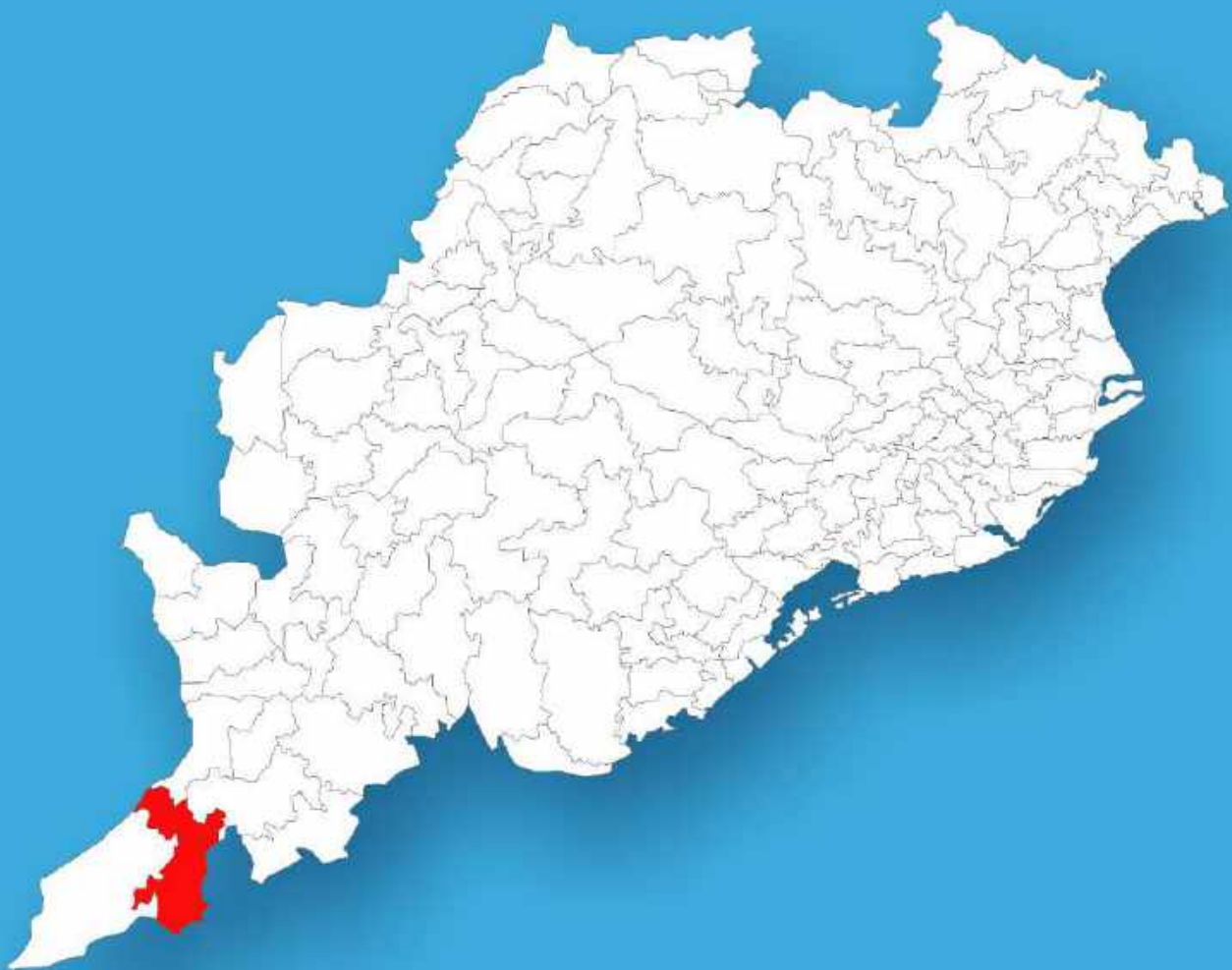




Odisha

Assembly Factbook™

Chitrakonda Assembly Constituency



Key Electoral Data of Chitrakonda
Assembly Constituency (Vidhan Sabha)

Odisha

Assembly Factbook™

Chitrakonda Assembly Constituency



Chitrakonda Vidhan Sabha

Editor & Director

Dr. R.K. Thukral

Research Editor

Dr. Shafeeq Rahman

Compiled, Researched and Published by Datanet India Pvt. Ltd.

D-100, 1st Floor,

Okhla Industrial Area, Phase-I,
New Delhi- 110020.

Ph.: 91-11- 43580781-84

Email : support@indiastatpublications.com

Website : www.indiastatelections.com

Online Book Store :

www.indiastatpublications.com

Report No. : AFB/OD-147-0125

ISBN : 978-93-5313-231-6

First Edition : January, 2018

Eighth Updated Edition : January, 2025

Price : Rs. 11500/-

US\$ 310

© Datanet India Pvt. Ltd.

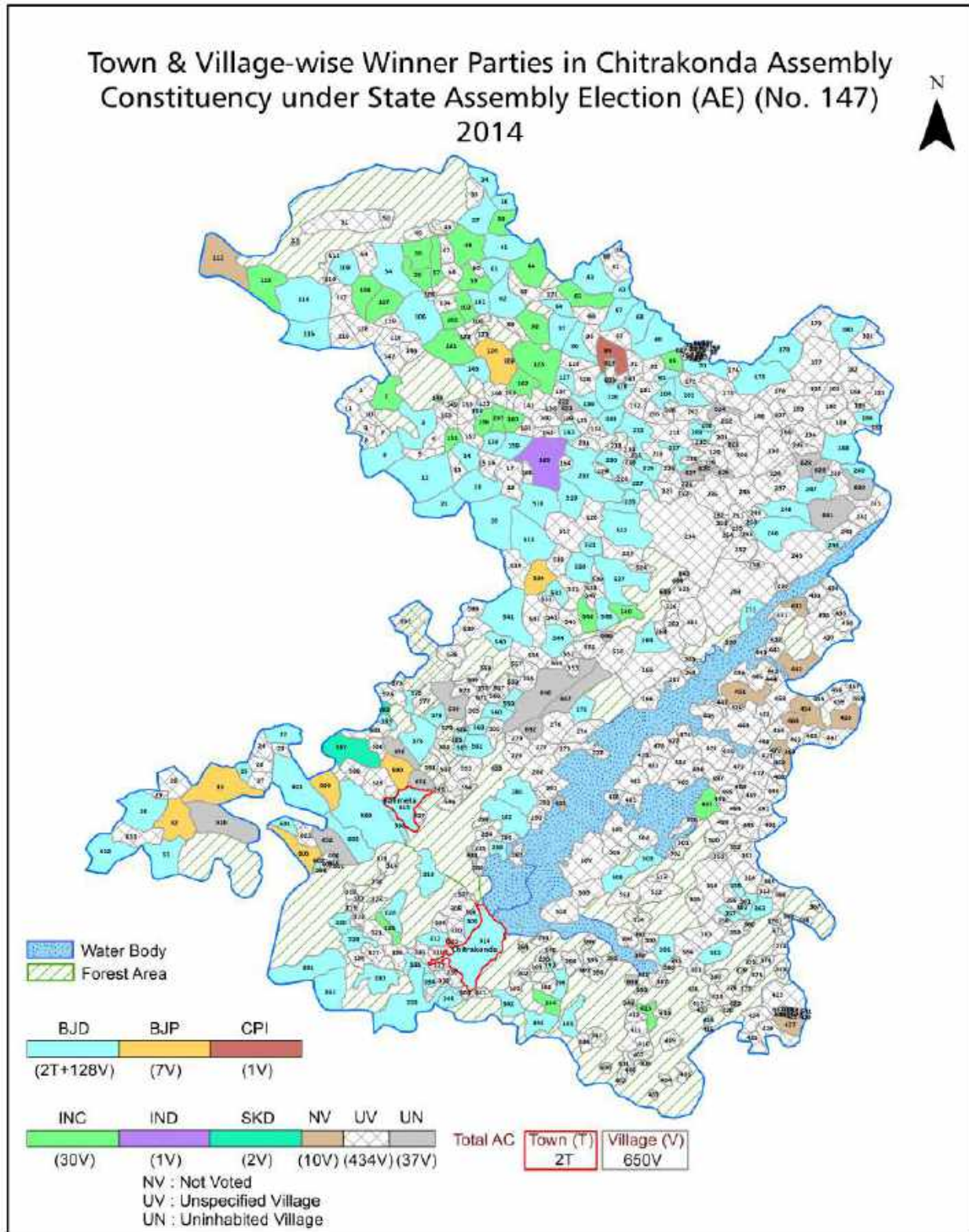
All rights reserved. No part of this book may be reproduced, stored in a retrieval system or transmitted in any form or by any means, mechanical photocopying, photographing, scanning, recording or otherwise without the prior written permission of the publisher. Please refer to Disclaimer at page no. 229 for the use of this publication.

Printed in India

Contents

No.	Particulars	Page No.
	Introduction	
1	Assembly Constituency - (Vidhan Sabha) at a Glance Features of Assembly as per Delimitation Commission of India (2008)	1-2
	Location and Political Maps	
2	Location Map Boundaries of Assembly Constituency - (Vidhan Sabha in District Boundaries of Assembly Constituency under Parliamentary Constituency - (Lok Sabha) Town & Village-wise Winner Parties- 2024-PE, 2024-AE, 2019-PE, 2019-AE, 2014-PE, 2014-AE, 2009-PE and 2009-AE	3-11
	Administrative Setup (2011)	
3	District Sub-district Towns Villages Inhabited Villages Uninhabited Villages Village Panchayat Intermediate Panchayat	12-42
	Demographics (2011)	
4	Population Households Rural/Urban Population Towns and Villages by Population Size Sex Ratio (Total & 0-6 Years) Religious Population Social Population Literacy Rate	43-44
	Electoral Features	
5	Important Dates of Last Elections Held Electors by Gender Service Electors Voters Voters Turnout Polling Stations & Average Number of Electors per Polling Station Electors by Age Group Present Elected Representatives	45-50
	Historical Summary Election Results	
6	Vote Share of Major Parties Winning Margin (Number & Percentage Polarity of Parties Summary Result of Assembly Segment of Parliamentary Elections 2024, 2019, 2014, 2009, 2004 and 1999 Summary Result of Assembly Elections 2024, 2019, 2014, 2009, 2004, 2000, 1995, 1990, 1985, 1980, 1977 and 1974	51-70
	Polling Station Level Election Results	
7	Name and Number of Polling Station 2024-PE, 2024-AE, 2019-PE, 2019-AE, 2014-PE, 2014-AE, 2009-PE and 2009-AE Polling Station-wise Electors, Voters & Voters Turnout 2024-PE, 2024-AE, 2019-PE, 2019-AE, 2014-PE, 2014-AE, 2009-PE and 2009-AE Polling Station wise Elections Results 2024-PE, 2024-AE, 2019-PE, 2019-AE, 2014-PE, 2014-AE, 2009-PE and 2009-AE	71-208
	Share of Assembly Constituency	
8	Share of Assembly Constituency - (Vidhan Sabha) in State, District and Parliamentary Constituency - (Lok Sabha)	209
	Socio-Economic Amenities (2011)	
9	Access to Administrative Units Agricultural, Manufacturing and Industrial Commodities Demographic Indicators Education Health & Manpower Drinking Water Supply Sanitation Entertainment and Recreations Infrastructure Power Food Allocation Distribution and Marketing of Agriculture Commodities Infrastructure Transport and Road Infrastructure Communication Banking and Financial Services Land Use Irrigation Source	211-225
10	Abbreviation & Sources	226-227
11	Disclaimer	229

Location & Political Map



Administrative Setup

List of Village Panchayat & Intermediate Panchayat (Block) Name - 2011

Village Name	Village Panchayat Name	Intermediate Panchayat Name
Adarladi	Gobindapalli	Khairaput
Amalabhata	Podaghat	Khairaput
Ambaguda	Ambaguda	Mathili
Ambapada	Mathili	Mathili
Ambilibeda	Nakamamudi	Kudumulgum
Anagel	Badadural	Khairaput
Andhari	Gobindapalli	Khairaput
Andirapali	Andrapalli	Kudumulgum
Andrahal	Andrahal	Khairaput
Anguraguda	Mudulipada	Khairaput
Anibirida	Rallegada	Kudumulgum
Anjaraguda	Badapadar	Kudumulgum
Anlajodi	Chaulamandi	Mathili
Apanamala	Somanathpur	Kudumulgum
Aralipada	Andrapalli	Kudumulgum
Arapadar	Andrapalli	Kudumulgum
Arinji alias Kantabanjaguda	Guntabeda	Korkunda
Arnabeta	Badapada	Kudumulgum
Aunliput	Kadamguda	Khairaput
Bachalmeta	Udulibeda	Mathili
Bachilipadar	Andrapalli	Kudumulgum
Badabel	Andrahal	Khairaput
Badadural	Badadural	Khairaput
Badaghat	Gobindapalli	Khairaput
Badaguda	Chaulamandi	Mathili
Badaliguda	Udulibeda	Mathili
Badapada	Mudulipada	Khairaput
Badapada	Badapada	Kudumulgum
Badaput	Nuaguda	Korkunda

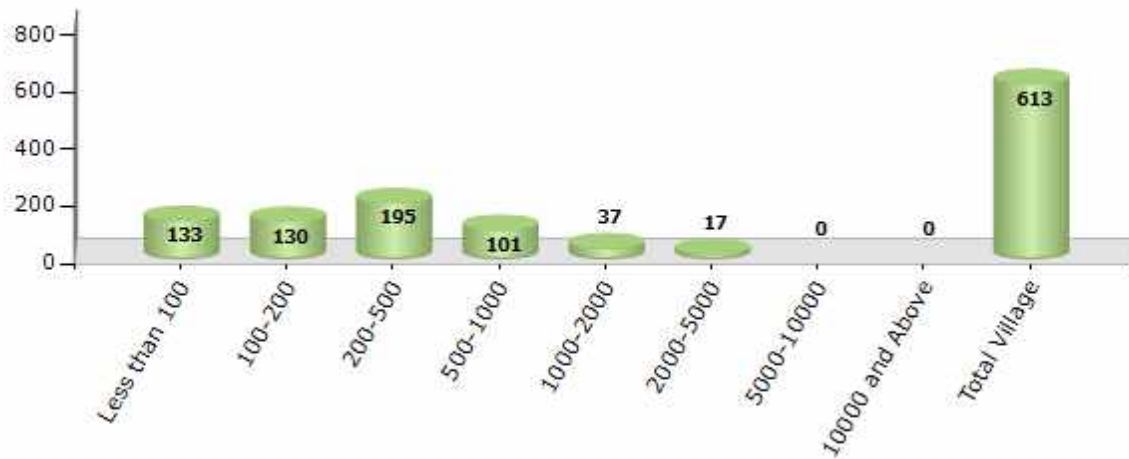
Contd....

Demographic

Number of Villages by Population Size - 2011

Less than 100	100-200	200-500	500-1000	1000-2000	2000-5000	5000-10000	10000 and Above	Total Village
133	130	195	101	37	17	0	0	613

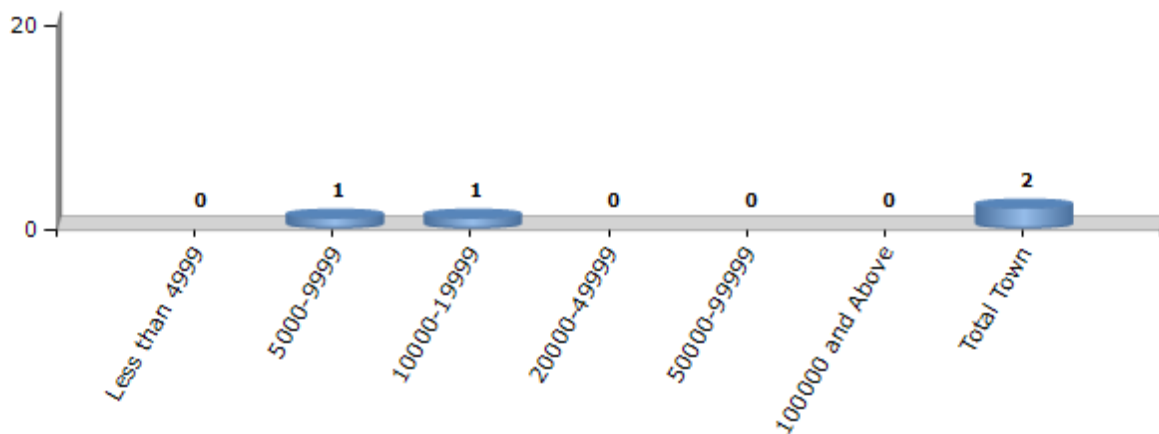
Number of Villages by Population Size - 2011



Number of Towns by Population Size - 2011

Less than 4999	5000-9999	10000-19999	20000-49999	50000-99999	100000 and Above	Total Town
0	1	1	0	0	0	2

Number of Towns by Population Size - 2011

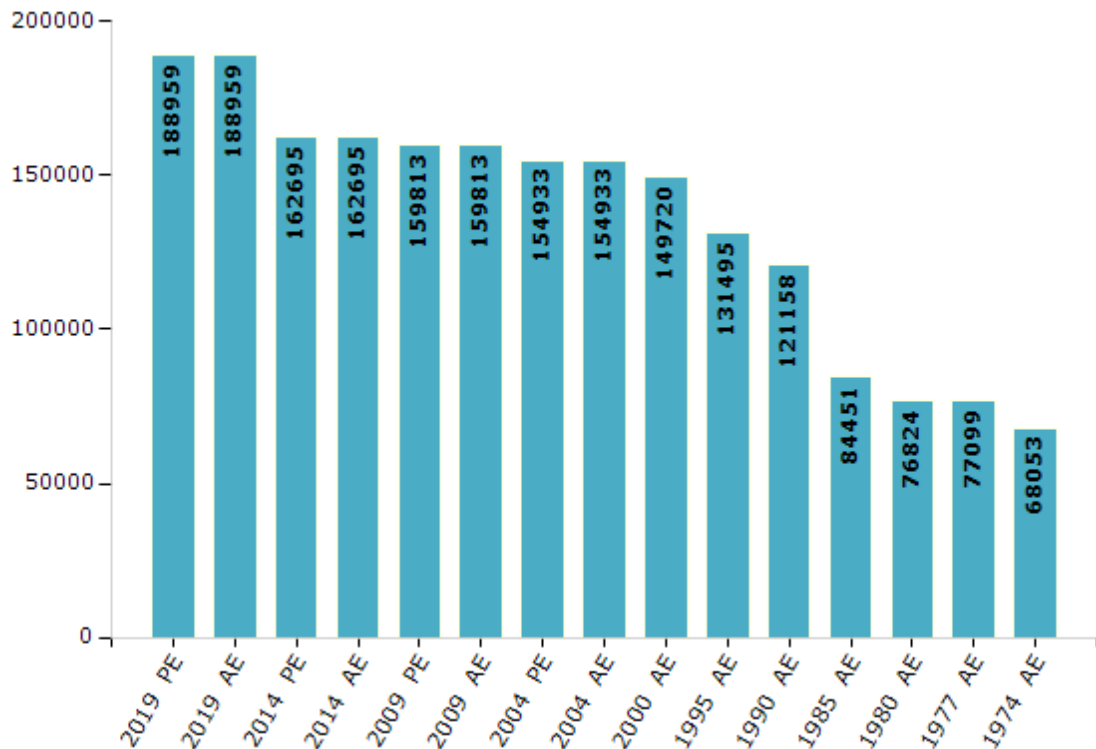


Electoral Features

Electors by Male & Female

Year	Male	Female	Others	Total	Year	Male	Female	Others	Total
2019 PE	90593	98356	10	188959	1990 AE	61516	59642	-	121158
2019 AE	90593	98356	10	188959	1985 AE	42656	41795	-	84451
2014 PE	79710	82982	3	162695	1980 AE	40135	36689	-	76824
2014 AE	79710	82982	3	162695	1977 AE	41748	35351	-	77099
2009 PE	78130	81683	-	159813	1974 AE	35032	33021	-	68053
2009 AE	78130	81683	-	159813	1971 AE	-	-	-	-
2004 PE	76426	78507	-	154933	1967 AE	-	-	-	-
2004 AE	76426	78507	-	154933	1961 AE	-	-	-	-
2000 AE	75029	74691	-	149720	1957 AE	-	-	-	-
1999 PE	-	-	-	-	1952 AE	-	-	-	-
1995 AE	65973	65522	-	131495					

Number of Electors



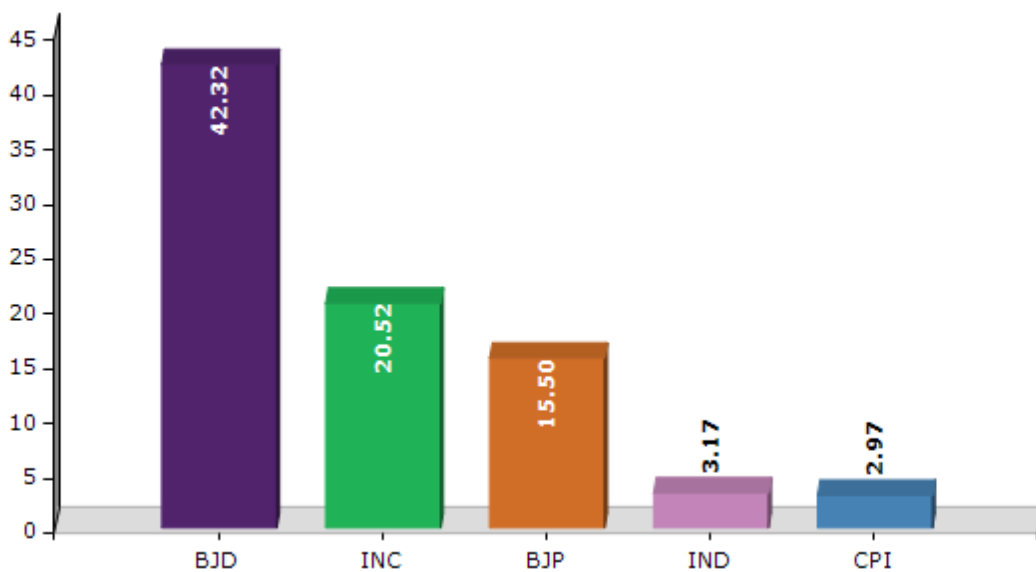
Note : AE : Assembly Election, PE : Assembly Segment of Parliamentary Election

Historical Summary Election Results

Summary Result of Assembly Election - 2014

Candidate Name	Party	Votes	Votes %
Dambaru Sisa	BJD	48000	42.32
Sunadhar Kakari	INC	23270	20.52
Sarat Chandra Buruda	BJP	17578	15.5
Jalandhar Nayak	IND	3593	3.17
Haladhar Pujari	CPI	3370	2.97
Ghenu Muduli	SKD	2629	2.32
Mukunda Padiami	OJM	2360	2.08
Sanatan Kabasi	BSP	1869	1.65
Chinmay Kumar Dora	AITC	1676	1.48
Jagabandhu Godangi	SAMO	1643	1.45
Ghana Nayak	IND	1593	1.4
Dhanurjay Madkami	AOP	1569	1.38
Rama Chandra Mademi	KS	1403	1.24
	NOTA	2861	2.52

Votes Percentage of Top Parties - 2014



Polling Station Level Election Results

Number and Name of Polling Stations (PS) (2019 AE)

Number of Polling Stations	Name of Polling Stations	Number of Polling Stations	Name of Polling Stations
1	Kamarpalli	22	Pitatang
2	Mundaguda	23	Sarangpalli
3	Mahupadar-I	24	Salimi
4	Mahupadar-II	25	Talapadar
5	Temurupalli-I	26	Bhainsaghat
6	Temurpalli-II	27	Birenapalli
7	Dhakadrasi	28	Kianga
8	Chamundarasi	29	Timasput
9	Kopra	30	Kadapadar
10	Bara	31	Dalapatiput
11	Luler	32	Anantapujariguda
12	Sanagumma	33	Kutunipalli
13	Kartanpalli	34	Kulabeda
14	Udaygiri	35	Bimanpali
15	Sarangpalli	36	Patraput
16	Serpalli	37	Dhungiaput
17	Kongrabeda	38	Mendukuli
18	Kansariput	39	Duraguda
19	Sargiguda	40	Saradaput
20	Kotapalli	41	Sindhbeda
21	Bedrupalli	42	Chedenga

Contd....

Polling Station Level Election Results

Polling Station-wise Votes Secured by Overall Top Five Parties in Chittrakonda Assembly in Assembly Election (AE) under Nabarangpur Parliamentary Constituency in Odisha (2019)

Number of Polling Station	Winner - Purna Chandra Baka (BJD)	Runner-up - Laxmipriya Nayak (INC)	3rd - Padu Majhi (BJP)	4th - Balaraju Kope (IND)	5th - Ghenu Muduli (skd)	NOTA	Other	Total Votes Secured
36	320	390	153	53	29	32	29	1006
37	183	164	48	7	4	8	7	421
38	373	106	154	50	12	7	13	715
39	411	123	128	44	6	28	17	757
40	151	311	71	47	20	26	15	641
41	228	264	151	31	19	18	17	728
42	267	260	323	53	38	26	31	998
43	431	122	99	50	13	39	14	768
44	261	222	34	9	11	8	10	555
45	41	259	20	13	10	15	9	367
46	198	224	98	30	19	34	12	615
47	164	378	74	20	17	3	18	674
48	90	406	36	15	24	31	26	628
49	395	238	63	22	23	40	7	788
50	320	349	145	28	30	38	25	935
51	255	203	77	38	29	24	10	636
52	272	212	70	41	16	2	11	624
53	192	157	127	59	9	20	11	575
54	308	290	79	33	16	25	9	760
55	145	222	43	15	10	10	21	466
56	231	227	73	117	31	26	23	728
57	67	236	10	26	9	9	4	361
58	133	32	92	296	11	10	10	584
59	243	156	68	353	27	27	25	899
60	321	190	166	98	16	15	20	826
61	354	60	101	29	6	24	14	588
62	185	33	78	254	9	11	18	588
63	333	177	147	200	20	14	23	914
64	63	349	48	10	15	7	15	507
65	188	150	210	23	6	15	6	598
66	163	100	167	13	7	11	7	468
67	186	150	159	31	10	28	13	577
68	57	224	14	12	18	19	8	352
69	178	346	96	35	44	36	43	778
70	35	245	17	9	9	7	24	346

Contd....

Polling Station Level Election Results

Winner, Runner-up and 3rd Party Position & Winning Margin According to Polling Stations in Chitrakonda Assembly in Assembly Election (AE) under Nabarangpur Parliamentary Constituency in Odisha (2019)

Polling Station Number	Winner Party	Winner Votes (%)	Runner-up Party	Runner-up Votes (%)	Winning Margin Votes (%)	Third Party	Third Party Votes (%)	Other Votes (%)
71	BJP	115 (32.49)	BJD	88 (24.86)	27 (7.63)	INC	78 (22.03)	73 (20.62)
72	INC	328 (38.86)	BJD	258 (30.57)	70 (8.29)	BJP	119 (14.1)	139 (16.47)
73	INC	237 (60.31)	BJD	53 (13.49)	184 (46.82)	BSP	42 (10.69)	61 (15.52)
74	INC	82 (45.56)	BJD	25 (13.89)	57 (31.67)	BJP	18 (10)	55 (30.56)
75	INC	155 (42.58)	BJD	60 (16.48)	95 (26.1)	BJP	39 (10.71)	110 (30.22)
76	BJD	223 (56.46)	INC	88 (22.28)	135 (34.18)	skd	25 (6.33)	59 (14.94)
77	BJP	19 (45.24)	INC	8 (19.05)	11 (26.19)	BJD	7 (16.67)	8 (19.05)
78	INC	133 (50.76)	BJD	46 (17.56)	87 (33.2)	skd	25 (9.54)	58 (22.14)
79	INC	161 (31.32)	BJD	133 (25.88)	28 (5.44)	BJP	79 (15.37)	141 (27.43)
80	BJD	138 (26.74)	INC	134 (25.97)	4 (0.77)	IND (BK)	59 (11.43)	185 (35.85)
81	BJD	261 (39.01)	INC	156 (23.32)	105 (15.69)	BJP	142 (21.23)	110 (16.44)
82	BJD	244 (49.49)	BJP	142 (28.8)	102 (20.69)	INC	76 (15.42)	31 (6.29)
83	BJD	420 (46.36)	BJP	185 (20.42)	235 (25.94)	INC	157 (17.33)	144 (15.89)
84	BJD	454 (61.85)	INC	111 (15.12)	343 (46.73)	BJP	71 (9.67)	98 (13.35)
85	BJD	209 (39.36)	BJP	133 (25.05)	76 (14.31)	IND (BK)	121 (22.79)	68 (12.81)
86	IND (BK)	148 (28.68)	BJP	139 (26.94)	9 (1.74)	BJD	134 (25.97)	95 (18.41)
87	BJD	104 (30.95)	BJP	97 (28.87)	7 (2.08)	IND (BK)	83 (24.7)	52 (15.48)
88	IND (BK)	221 (39.75)	BJD	176 (31.65)	45 (8.1)	BJP	85 (15.29)	74 (13.31)
89	IND (BK)	286 (46.96)	BJD	144 (23.65)	142 (23.31)	BJP	96 (15.76)	83 (13.63)
90	BJD	275 (63.81)	IND (BK)	57 (13.23)	218 (50.58)	INC	49 (11.37)	50 (11.6)
91	BJD	465 (58.42)	BJP	157 (19.72)	308 (38.7)	INC	83 (10.43)	91 (11.43)
92	BJD	289 (44.81)	INC	161 (24.96)	128 (19.85)	BJP	112 (17.36)	83 (12.87)
93	BJD	359 (50.71)	BJP	154 (21.75)	205 (28.96)	INC	109 (15.4)	86 (12.15)
94	BJD	232 (52.25)	INC	108 (24.32)	124 (27.93)	BJP	55 (12.39)	49 (11.04)
95	BJD	400 (68.03)	INC	60 (10.2)	340 (57.83)	BJP	55 (9.35)	73 (12.41)
96	BJD	379 (49.54)	BJP	212 (27.71)	167 (21.83)	INC	97 (12.68)	77 (10.07)
97	BJD	352 (55.96)	BJP	153 (24.32)	199 (31.64)	INC	58 (9.22)	66 (10.49)
98	BJD	327 (44.98)	INC	288 (39.61)	39 (5.37)	BJP	47 (6.46)	65 (8.94)
99	BJD	289 (37.83)	BJP	227 (29.71)	62 (8.12)	INC	158 (20.68)	90 (11.78)
100	BJD	474 (48.92)	INC	234 (24.15)	240 (24.77)	IND (BK)	134 (13.83)	127 (13.11)
101	BJD	341 (49.06)	INC	213 (30.65)	128 (18.41)	BJP	62 (8.92)	79 (11.37)
102	INC	406 (41.13)	BJD	343 (34.75)	63 (6.38)	BJP	80 (8.11)	158 (16.01)
103	BJD	356 (44.84)	INC	285 (35.89)	71 (8.95)	BJP	66 (8.31)	87 (10.96)
104	BJD	430 (41.23)	INC	430 (41.23)	0 (0)	BJP	101 (9.68)	82 (7.86)
105	BJD	266 (45.24)	INC	192 (32.65)	74 (12.59)	BJP	84 (14.29)	46 (7.82)

Contd....

Socio-Economic Amenities - Rural

Access to Education Facilities

Particulars	Number of Villages (% of Population)				
	Available	Not Available	If Not Available (Distance of Nearest Facility)		
			A	B	C
Govt. Primary School	486 (94)	127 (6)	78 (4)	43 (2)	6 (0)
Private Primary School	18 (7)	595 (93)	0 (0)	0 (0)	0 (0)
Govt. Middle School	177 (56)	436 (44)	189 (21)	224 (21)	21 (2)
Private Middle School	10 (5)	603 (95)	1 (0)	0 (0)	0 (0)
Govt. Secondary School	36 (22)	577 (78)	184 (24)	356 (47)	0 (0)
Private Secondary School	5 (4)	608 (96)	12 (3)	22 (3)	0 (0)
Govt. Senior Secondary School	5 (6)	608 (94)	12 (2)	33 (5)	386 (50)
Private Senior Secondary School	2 (2)	611 (98)	15 (3)	35 (8)	126 (24)
Govt. Arts and Science Degree College	2 (3)	611 (97)	7 (1)	65 (8)	357 (54)
Private Arts and Science Degree College	0 (0)	613 (100)	11 (3)	36 (6)	135 (25)
Govt. Engineering College	0 (0)	613 (100)	0 (0)	0 (0)	0 (0)
Private Engineering College	0 (0)	613 (100)	0 (0)	0 (0)	613 (100)
Govt. Medicine College	0 (0)	613 (100)	0 (0)	0 (0)	610 (98)
Private Medicine College	0 (0)	613 (100)	0 (0)	0 (0)	0 (0)
Govt. Management Institute	0 (0)	613 (100)	0 (0)	0 (0)	10 (4)
Private Management Institute	0 (0)	613 (100)	0 (0)	0 (0)	603 (96)
Govt. Polytechnic	1 (0)	612 (100)	1 (0)	0 (0)	164 (32)
Private Polytechnic	0 (0)	613 (100)	0 (0)	0 (0)	191 (30)
Govt. Vocational Training School/ITI	0 (0)	613 (100)	1 (0)	1 (0)	304 (57)
Private Vocational Training School/ITI	0 (0)	613 (100)	0 (0)	0 (0)	66 (12)
Govt. Non Formal Training Centre	0 (0)	613 (100)	0 (0)	3 (0)	114 (23)
Private Non Formal Training Centre	0 (0)	613 (100)	2 (1)	0 (0)	37 (10)
Govt. School For Disabled	0 (0)	613 (100)	1 (0)	5 (1)	113 (18)
Private School For Disabled	0 (0)	613 (100)	6 (1)	10 (3)	181 (35)
Government Others	0 (0)	613 (100)	0 (0)	0 (0)	8 (1)
Private Others	0 (0)	613 (100)	0 (0)	0 (0)	3 (0)

Note : Distance A : Less than 5 km; B : Between 5-10 km; C : 10+ km.; Source : Data Analysis is based on 2011 Census.

DISCLAIMER

The Terms of Use and Disclaimer of Datanet India Private Limited (hereinafter referred to as "Datanet") for use of this analysis report of **Chitrakonda Assembly Constituency (Chitrakonda Vidhan Sabha)** :-

1. **Assembly Factbook™** is a Registered Trade Mark owned by Datanet.
2. All the maps are sketched and graphical representation only and have not been drawn to the scale and also not to represent the actual geographical area or boundary of the unit.
3. The data for the aforesaid analysis is based on authentic sources and has been culled from the various publications of Census, CSO and NSSO for district and block level data, various central and state government departments, Central & State Elections Commissions and the concerned Returning Officers' releases, Electoral Rolls, Election results and allied publications, internal assessment, surveys, estimates and analysis. Therefore, certain adjustment of data at micro level may have been done to arrive closer to the macro data.
4. Data have been provided on an "As Is" and "As AVAILABLE" basis
5. The colours shown in the maps or diagram and charts of a particular party, alliance or AC are indicative and do not represent them.
6. This publication which includes maps, sheets, graphs and data would be the property under copyright of Datanet only. The user may use these for its internal study, analysis and research purposes. It's public display, re-selling or any commercial uses by the user are not allowed.
7. Datanet has taken due care and caution in compilation and processing of data and allied information, but does not guarantee the accuracy, adequacy or completeness of any information/analysis and will be not responsible for any errors or omissions or for the results obtained from the use of such information/analysis.
8. All the contents for the publication have been culled from various authentic sources and Datanet reasonably believes such sources to be reliable, but does not make any representations, express or implied as to the accuracy or fitness of use of such information. The information or contents of the information/analysis do not constitute advice and should not be relied upon in making (or refraining from making) any decision. Any reliance placed upon the information provided by Datanet is the sole responsibility and strictly at the user's risk.
9. In no event will Datanet be liable for any damages (including, without limitation, damages for loss of business projects, or loss of profits) arising in contract, tort or otherwise from the use of or inability to use any of its contents, or from any action taken (or refrained from being taken) as a result of using the analysis or any of its contents. Datanet its directors, owners, editors, officials, employees, distributor and agents or any associate will not be liable for any errors in the information contained or any consequences arising from the use of the contents of the provided information/analysis.
10. If any provision of these terms and conditions is held invalid or illegal or unenforceable for any reason by any court of competent jurisdiction, such provision shall be severed and the remainder of provisions of the terms and conditions shall continue in full force and effect as if the Term of Use had been executed with the invalid, illegal or unenforceable provision eliminated.
11. If there are any discrepancies in the information provided, please bring it to attention of Datanet for suitable rectification measures.

Buy Online This Complete Book At
Datanet India eBooks Store

www.indiastatpublications.com

or go directly at

[http://www.indiastatpublications.com/
Assembly_factbook/Odisha/Nabarangpur/Chittrakonda](http://www.indiastatpublications.com/Assembly_factbook/Odisha/Nabarangpur/Chittrakonda)

 **india**stat**elections**

ISBN : 978-93-5313-231-6

