



Odisha

Assembly Factbook™

Nabarangpur Assembly Constituency



Key Electoral Data of Nabarangpur
Assembly Constituency (Vidhan Sabha)

Odisha

Assembly Factbook™

Nabarangpur Assembly Constituency



Nabarangpur Vidhan Sabha

Editor & Director

Dr. R.K. Thukral

Research Editor

Dr. Shafeeq Rahman

Compiled, Researched and Published by Datanet India Pvt. Ltd.

D-100, 1st Floor,

Okhla Industrial Area, Phase-I,
New Delhi- 110020.

Ph.: 91-11- 43580781-84

Email : support@indiastatpublications.com

Website : www.indiastatelections.com

Online Book Store :

www.indiastatpublications.com

Report No. : AFB/OD-075-0125

ISBN : 978-93-5313-268-2

First Edition : January, 2018

Eighth Updated Edition : January, 2025

Price : Rs. 11500/-

US\$ 310

© Datanet India Pvt. Ltd.

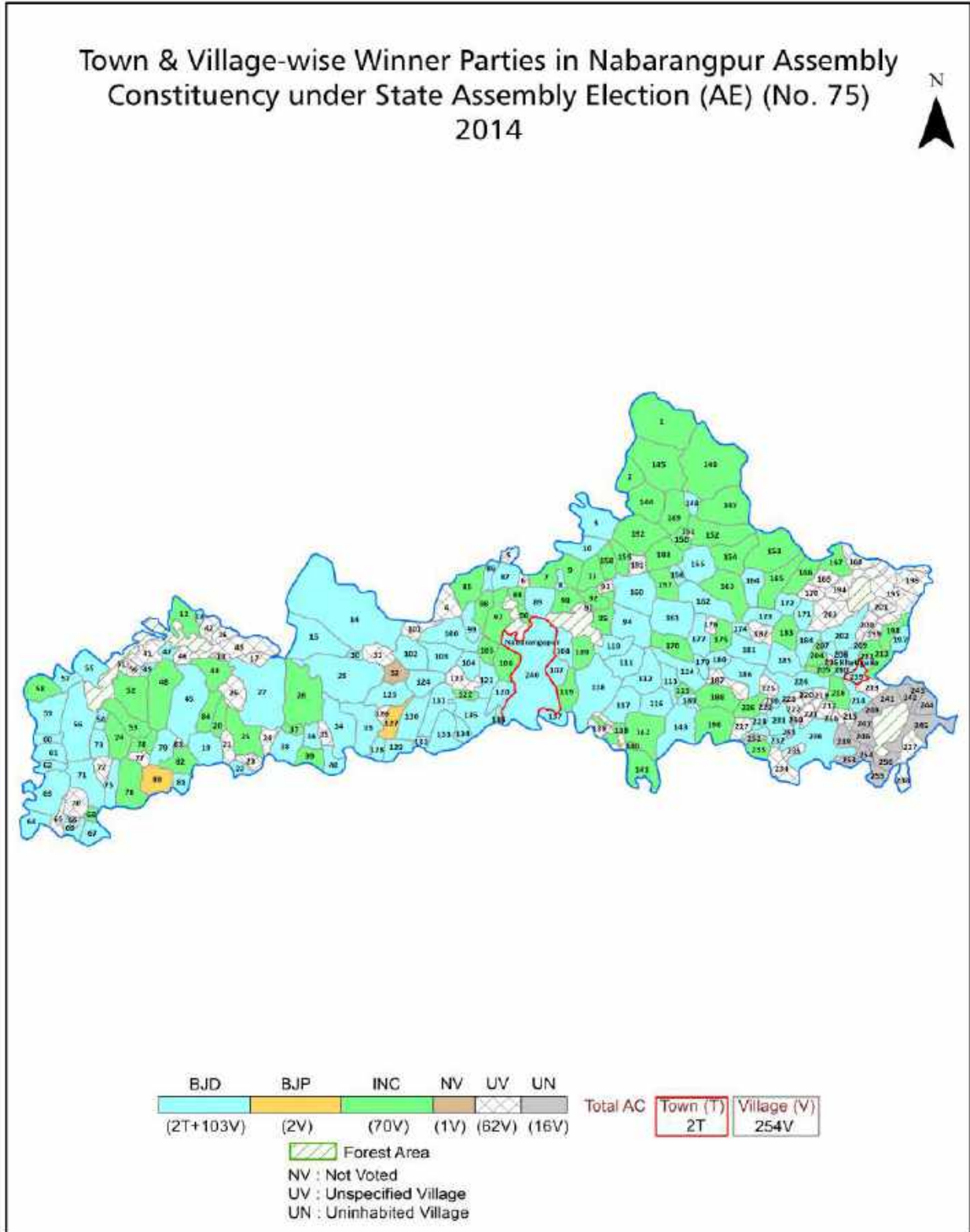
All rights reserved. No part of this book may be reproduced, stored in a retrieval system or transmitted in any form or by any means, mechanical photocopying, photographing, scanning, recording or otherwise without the prior written permission of the publisher. Please refer to Disclaimer at page no. 238 for the use of this publication.

Printed in India

Contents

No.	Particulars	Page No.
	Introduction	
1	Assembly Constituency - (Vidhan Sabha) at a Glance Features of Assembly as per Delimitation Commission of India (2008)	1-2
	Location and Political Maps	
2	Location Map Boundaries of Assembly Constituency - (Vidhan Sabha in District Boundaries of Assembly Constituency under Parliamentary Constituency - (Lok Sabha) Town & Village-wise Winner Parties- 2024-PE, 2024-AE, 2019-PE, 2019-AE, 2014-PE, 2014-AE, 2009-PE and 2009-AE	3-11
	Administrative Setup (2011)	
3	District Sub-district Towns Villages Inhabited Villages Uninhabited Villages Village Panchayat Intermediate Panchayat	12-24
	Demographics (2011)	
4	Population Households Rural/Urban Population Towns and Villages by Population Size Sex Ratio (Total & 0-6 Years) Religious Population Social Population Literacy Rate	25-26
	Electoral Features	
5	Important Dates of Last Elections Held Electors by Gender Service Electors Voters Voters Turnout Polling Stations & Average Number of Electors per Polling Station Electors by Age Group Present Elected Representatives	27-32
	Historical Summary Election Results	
6	Vote Share of Major Parties Winning Margin (Number & Percentage Polarity of Parties Summary Result of Assembly Segment of Parliamentary Elections 2024, 2019, 2014, 2009, 2004 and 1999 Summary Result of Assembly Elections 2024, 2019, 2014, 2009, 2004, 2000, 1995, 1990, 1985, 1980, 1977, 1974, 1971, 1967, 1961, 1957 and 1952	33-57
	Polling Station Level Election Results	
7	Name and Number of Polling Station 2024-PE, 2024-AE, 2019-PE, 2019-AE, 2014-PE, 2014-AE, 2009-PE and 2009-AE Polling Station-wise Electors, Voters & Voters Turnout 2024-PE, 2024-AE, 2019-PE, 2019-AE, 2014-PE, 2014-AE, 2009-PE and 2009-AE Polling Station wise Elections Results 2024-PE, 2024-AE, 2019-PE, 2019-AE, 2014-PE, 2014-AE, 2009-PE and 2009-AE	58-217
	Share of Assembly Constituency	
8	Share of Assembly Constituency - (Vidhan Sabha) in State, District and Parliamentary Constituency - (Lok Sabha)	218
	Socio-Economic Amenities (2011)	
9	Access to Administrative Units Agricultural, Manufacturing and Industrial Commodities Demographic Indicators Education Health & Manpower Drinking Water Supply Sanitation Entertainment and Recreations Infrastructure Power Food Allocation Distribution and Marketing of Agriculture Commodities Infrastructure Transport and Road Infrastructure Communication Banking and Financial Services Land Use Irrigation Source	220-234
10	Abbreviation & Sources	235-236
11	Disclaimer	238

Location & Political Map



Administrative Setup

List of Village Panchayat & Intermediate Panchayat (Block) Name - 2011

Village Name	Village Panchayat Name	Intermediate Panchayat Name
Agnipur	Agnipur	Nabarangapur
Alupodar	Binjili	Kosagumuda
Ambadola	Badamasigam	Nabarangapur
Ambatapas	Gouda Deopalli	Tentulikhunti
Amodapatighatchura	Binjili	Kosagumuda
Anchala	Badaambda	Kosagumuda
Anchala Guma	Anchalaguma	Tentulikhunti
Antasor	Dahana	Nandahandi
Asonga	Kokidisemala	Kosagumuda
Atakabeda	Bada Kumuli	Nabarangapur
Aunlibhata	Amalabhata	Tentulikhunti
Aunliguma	Lamtaguda	Tentulikhunti
Badakumuli	Bada Kumuli	Nabarangapur
Badamasigan	Badamasigam	Nabarangapur
Badamoda	Badaambda	Kosagumuda
Badpur	Panduguda	Kosagumuda
Bagdari	Basini	Nabarangapur
Baghasiuni	Baghseuni	Nabarangapur
Bagra	Manchagam	Tentulikhunti
Balenga	Bamuni	Kosagumuda
Baminikote	Baghseuni	Nabarangapur
Bamuni	Bamuni	Kosagumuda
Bangapali	Pujariguda	Nabarangapur
Bania	Maliguda	Nandahandi
Baradebataguda	Jagannathpur	Nandahandi
Baragam	Mentri	Nandahandi
Bariaghat	Manchagam	Tentulikhunti
Barigura	Amalabhata	Tentulikhunti
Barogam	Ukiapalli	Kosagumuda

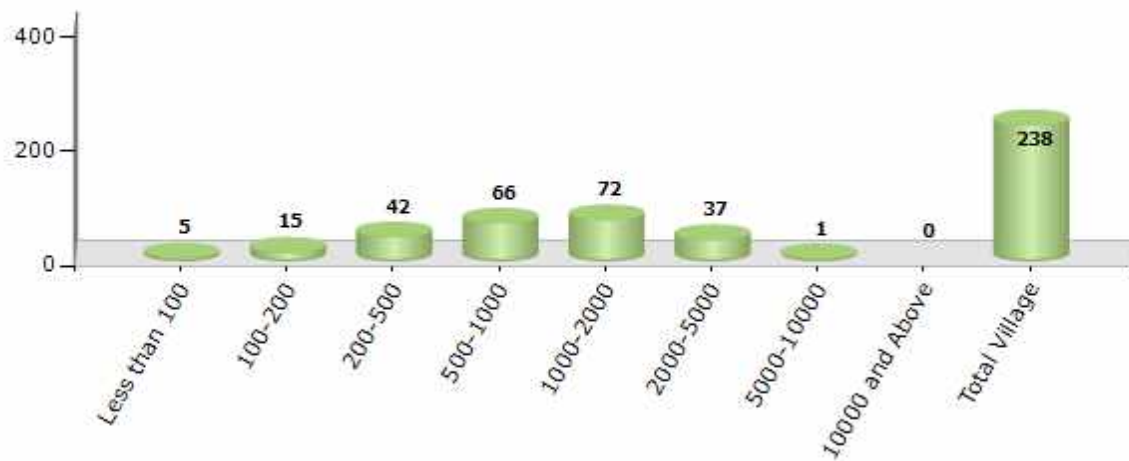
Contd....

Demographic

Number of Villages by Population Size - 2011

Less than 100	100-200	200-500	500-1000	1000-2000	2000-5000	5000-10000	10000 and Above	Total Village
5	15	42	66	72	37	1	0	238

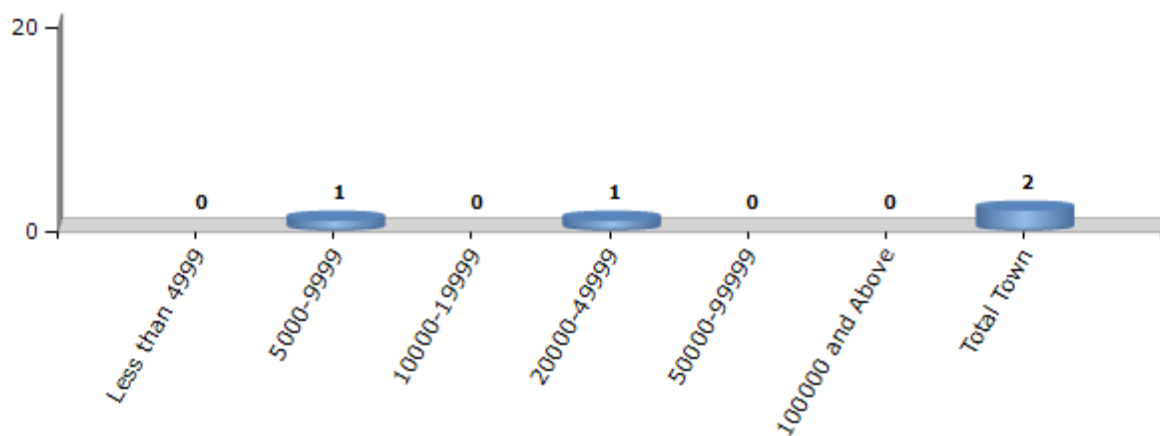
Number of Villages by Population Size - 2011



Number of Towns by Population Size - 2011

Less than 4999	5000-9999	10000-19999	20000-49999	50000-99999	100000 and Above	Total Town
0	1	0	1	0	0	2

Number of Towns by Population Size - 2011

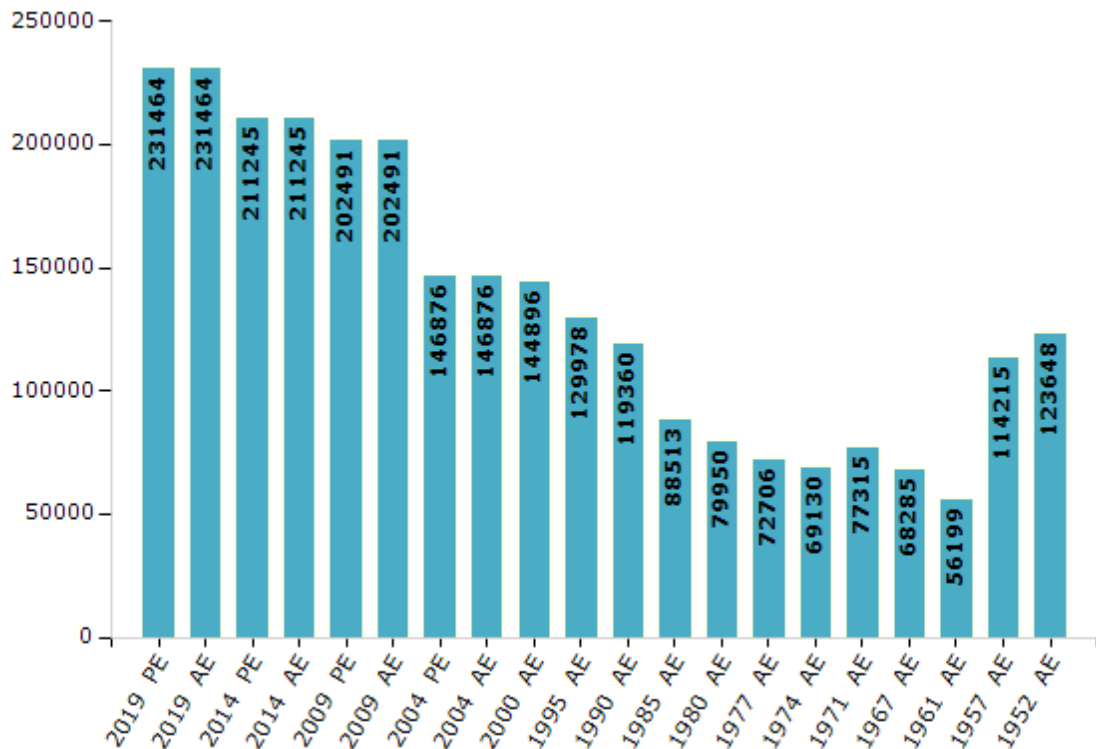


Electoral Features

Electors by Male & Female

Year	Male	Female	Others	Total	Year	Male	Female	Others	Total
2019 PE	112902	118525	37	231464	1990 AE	60867	58493	-	119360
2019 AE	112902	118525	37	231464	1985 AE	44746	43767	-	88513
2014 PE	104161	107063	21	211245	1980 AE	40405	39545	-	79950
2014 AE	104161	107063	21	211245	1977 AE	37201	35505	-	72706
2009 PE	99216	103275	-	202491	1974 AE	34227	34903	-	69130
2009 AE	99216	103275	-	202491	1971 AE	39954	37361	-	77315
2004 PE	72022	74854	-	146876	1967 AE	68285	0	-	68285
2004 AE	72022	74854	-	146876	1961 AE	56199	0	-	56199
2000 AE	71811	73085	-	144896	1957 AE	114215	0	-	114215
1999 PE	-	-	-	-	1952 AE	-	-	-	123648
1995 AE	65064	64914	-	129978					

Number of Electors



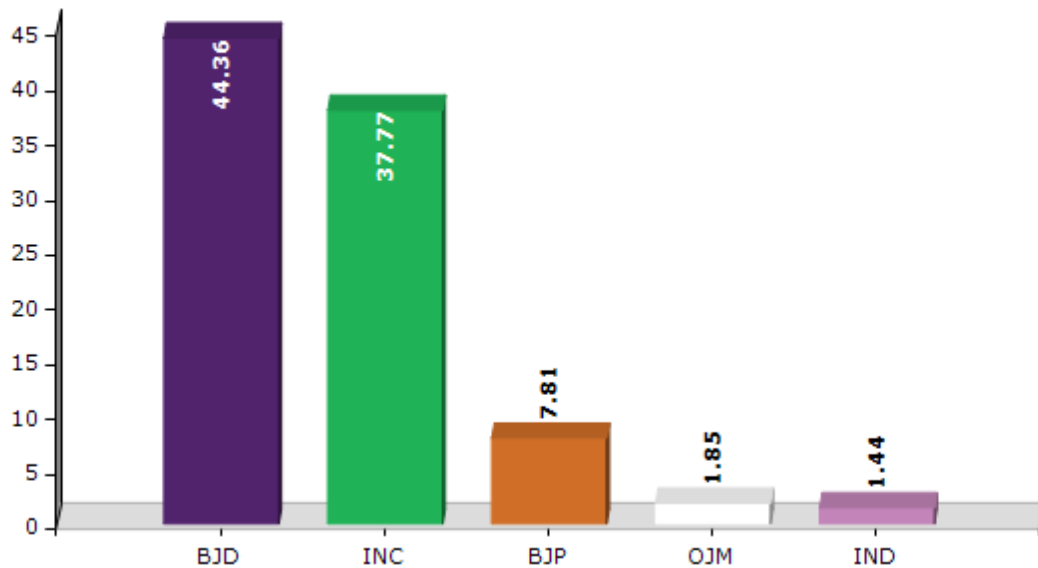
Note : AE : Assembly Election, PE : Assembly Segment of Parliamentary Election

Historical Summary Election Results

Summary Result of Assembly Election - 2014

Candidate Name	Party	Votes	Votes %
Manohar Randhari	BJD	76659	44.36
Sadan Nayak	INC	65270	37.77
Birendra Pujari	BJP	13496	7.81
Dibakar Pujari	OJM	3195	1.85
Puspanjali Nayak	IND	2491	1.44
Narasinh Bhotra	BSP	2334	1.35
Bhaskar Majhi	IND	2035	1.18
Laiban Muduli	SKD	1864	1.08
Chandradhwaja Majhi	IND	1849	1.07
	NOTA	3624	2.1

Votes Percentage of Top Parties - 2014



Polling Station Level Election Results

Number and Name of Polling Stations (PS) (2019 AE)

Number of Polling Stations	Name of Polling Stations	Number of Polling Stations	Name of Polling Stations
1	Umergam	22	Baragan-1
2	Anchala	23	Tikirachura
3	Maliatigam	24	Sialimalguda
4	Hordoli	25	Binjil
5	Gajagam	26	Balenga
6	Badambada	27	Churchunda
7	Haldiguda	28	Gadavaguda
8	Pujariguda	29	Jabaguda
9	Kusumpali	30	M.Gumundali
10	Nenganal	31	Karchamal-1
11	Kondapuri	32	Karchamal-2
12	Parajaguda	33	Michia
13	Ponduguda	34	Pujariguda
14	Badpur	35	Bhandri
15	Rajoda-1	36	K.Semela
16	Rajoda-2	37	Kerla
17	Bamuni	38	Ramapali
18	Sanamada	39	B.Gumandali
19	Mankidi	40	S.Keragam
20	Duragan	41	Neigam
21	Ukiapali	42	Dadhiaguda

Contd....

Polling Station Level Election Results

Polling Station-wise Votes Secured by Overall Top Five Parties in Nabarangpur Assembly in Assembly Election (AE) under Nabarangpur Parliamentary Constituency in Odisha (2019)

Number of Polling Station	Winner - Sadasiva Pradhani (BJD)	Runner-up - Gouri Shankar Majhi (BJP)	3rd - Sadan Nayak (INC)	4th - Bedabyas Bhatra (IND)	5th - ()	NOTA	Other	Total Votes Secured
36	250	395	257	20		17	0	939
37	211	127	362	3		2	0	705
38	167	113	290	12		7	0	589
39	351	144	206	12		7	0	720
40	346	89	325	20		33	0	813
41	348	122	312	28		39	0	849
42	105	53	119	6		7	0	290
43	284	130	185	20		33	0	652
44	349	148	510	50		44	0	1101
45	54	79	79	20		2	0	234
46	215	343	52	19		24	0	653
47	396	174	209	35		29	0	843
48	372	387	319	11		13	0	1102
49	348	142	138	16		4	0	648
50	255	429	158	37		24	0	903
51	57	73	89	17		3	0	239
52	460	147	108	18		17	0	750
53	235	262	270	30		20	0	817
54	416	263	238	22		32	0	971
55	247	238	339	34		26	0	884
56	73	123	307	6		8	0	517
57	477	163	203	24		22	0	889
58	320	156	257	20		21	0	774
59	252	243	129	14		17	0	655
60	188	248	348	26		38	0	848
61	228	123	126	3		7	0	487
62	473	185	179	31		26	0	894
63	421	243	217	28		21	0	930
64	364	319	149	30		25	0	887
65	257	187	334	21		16	0	815
66	596	270	113	21		12	0	1012
67	350	272	334	18		16	0	990
68	382	196	168	27		37	0	810
69	240	114	76	35		14	0	479
70	199	81	108	14		4	0	406

Contd....

Polling Station Level Election Results

Winner, Runner-up and 3rd Party Position & Winning Margin According to Polling Stations in Nabarangpur Assembly in Assembly Election (AE) under Nabarangpur Parliamentary Constituency in Odisha (2019)

Polling Station Number	Winner Party	Winner Votes (%)	Runner-up Party	Runner-up Votes (%)	Winning Margin Votes (%)	Third Party	Third Party Votes (%)	Other Votes (%)
71	INC	293 (38.45)	BJD	289 (37.93)	4 (0.52)	BJP	131 (17.19)	49 (6.43)
72	BJD	303 (60.24)	INC	137 (27.24)	166 (33)	BJP	25 (4.97)	38 (7.55)
73	BJD	291 (35.66)	BJP	267 (32.72)	24 (2.94)	INC	210 (25.74)	48 (5.88)
74	BJD	222 (39.02)	BJP	188 (33.04)	34 (5.98)	INC	139 (24.43)	20 (3.51)
75	BJD	381 (49.67)	INC	238 (31.03)	143 (18.64)	BJP	125 (16.3)	23 (3)
76	INC	298 (50.17)	BJD	162 (27.27)	136 (22.9)	BJP	102 (17.17)	32 (5.39)
77	BJD	459 (53.25)	BJP	221 (25.64)	238 (27.61)	INC	109 (12.65)	73 (8.47)
78	BJD	292 (54.48)	BJP	172 (32.09)	120 (22.39)	INC	50 (9.33)	22 (4.1)
79	BJP	607 (55.54)	BJD	274 (25.07)	333 (30.47)	INC	184 (16.83)	28 (2.56)
80	BJP	504 (48.05)	BJD	342 (32.6)	162 (15.45)	INC	163 (15.54)	40 (3.81)
81	INC	329 (37.95)	BJD	243 (28.03)	86 (9.92)	BJP	230 (26.53)	65 (7.5)
82	BJD	334 (38.84)	BJP	286 (33.26)	48 (5.58)	INC	194 (22.56)	46 (5.35)
83	BJD	233 (32.5)	BJP	224 (31.24)	9 (1.26)	INC	164 (22.87)	96 (13.39)
84	BJP	164 (38.5)	INC	145 (34.04)	19 (4.46)	BJD	90 (21.13)	27 (6.34)
85	INC	306 (46.86)	BJP	191 (29.25)	115 (17.61)	BJD	133 (20.37)	23 (3.52)
86	INC	335 (53.17)	BJD	161 (25.56)	174 (27.61)	BJP	102 (16.19)	32 (5.08)
87	BJD	510 (58.29)	BJP	172 (19.66)	338 (38.63)	INC	155 (17.71)	38 (4.34)
88	INC	226 (50.33)	BJP	135 (30.07)	91 (20.26)	BJD	74 (16.48)	14 (3.12)
89	BJD	335 (56.49)	INC	117 (19.73)	218 (36.76)	BJP	98 (16.53)	43 (7.25)
90	INC	176 (33.85)	BJD	161 (30.96)	15 (2.89)	BJP	125 (24.04)	58 (11.15)
91	BJD	466 (41.94)	INC	286 (25.74)	180 (16.2)	BJP	270 (24.3)	89 (8.01)
92	BJD	598 (50.13)	BJP	323 (27.07)	275 (23.06)	INC	229 (19.2)	43 (3.6)
93	BJD	396 (40.74)	BJP	317 (32.61)	79 (8.13)	INC	226 (23.25)	33 (3.4)
94	BJD	319 (48.55)	BJP	242 (36.83)	77 (11.72)	INC	67 (10.2)	29 (4.41)
95	BJP	273 (40.5)	BJD	259 (38.43)	14 (2.07)	INC	119 (17.66)	23 (3.41)
96	BJD	517 (42.38)	BJP	425 (34.84)	92 (7.54)	INC	198 (16.23)	80 (6.56)
97	BJP	472 (43.38)	BJD	409 (37.59)	63 (5.79)	INC	136 (12.5)	71 (6.53)
98	IND (BB)	257 (30.49)	INC	229 (27.16)	28 (3.33)	BJP	187 (22.18)	170 (20.17)
99	IND (BB)	635 (63.44)	BJP	146 (14.59)	489 (48.85)	BJD	84 (8.39)	136 (13.59)
100	BJP	350 (47.75)	BJD	196 (26.74)	154 (21.01)	INC	100 (13.64)	87 (11.87)
101	BJP	457 (52.23)	BJD	235 (26.86)	222 (25.37)	INC	133 (15.2)	50 (5.71)
102	INC	138 (54.76)	BJD	63 (25)	75 (29.76)	BJP	37 (14.68)	14 (5.56)
103	BJP	248 (55.98)	BJD	87 (19.64)	161 (36.34)	INC	63 (14.22)	45 (10.16)
104	BJP	404 (41.61)	INC	237 (24.41)	167 (17.2)	BJD	231 (23.79)	99 (10.2)
105	INC	172 (38.22)	BJP	144 (32)	28 (6.22)	BJD	121 (26.89)	13 (2.89)

Contd....

Socio-Economic Amenities - Rural

Access to Education Facilities

Particulars	Number of Villages (% of Population)				
	Available	Not Available	If Not Available (Distance of Nearest Facility)		
			A	B	C
Govt. Primary School	228 (99)	10 (1)	9 (1)	1 (0)	0 (0)
Private Primary School	11 (7)	227 (93)	0 (0)	0 (0)	0 (0)
Govt. Middle School	125 (73)	113 (27)	72 (19)	33 (7)	0 (0)
Private Middle School	9 (6)	229 (94)	6 (1)	0 (0)	0 (0)
Govt. Secondary School	45 (31)	193 (69)	64 (24)	82 (26)	0 (0)
Private Secondary School	7 (5)	231 (95)	20 (8)	22 (8)	0 (0)
Govt. Senior Secondary School	2 (1)	236 (99)	12 (4)	43 (15)	95 (39)
Private Senior Secondary School	0 (0)	238 (100)	5 (1)	31 (11)	50 (29)
Govt. Arts and Science Degree College	0 (0)	238 (100)	2 (1)	21 (8)	35 (14)
Private Arts and Science Degree College	1 (0)	237 (100)	6 (4)	29 (14)	144 (60)
Govt. Engineering College	0 (0)	238 (100)	0 (0)	0 (0)	0 (0)
Private Engineering College	1 (0)	237 (100)	1 (0)	19 (7)	217 (92)
Govt. Medicine College	0 (0)	238 (100)	0 (0)	0 (0)	237 (100)
Private Medicine College	0 (0)	238 (100)	0 (0)	0 (0)	0 (0)
Govt. Management Institute	0 (0)	238 (100)	0 (0)	0 (0)	0 (0)
Private Management Institute	0 (0)	238 (100)	0 (0)	0 (0)	238 (100)
Govt. Polytechnic	0 (0)	238 (100)	0 (0)	0 (0)	91 (38)
Private Polytechnic	0 (0)	238 (100)	0 (0)	0 (0)	66 (28)
Govt. Vocational Training School/ITI	1 (0)	237 (100)	1 (1)	2 (1)	152 (64)
Private Vocational Training School/ITI	2 (0)	236 (100)	2 (1)	14 (5)	27 (13)
Govt. Non Formal Training Centre	0 (0)	238 (100)	1 (0)	3 (1)	90 (36)
Private Non Formal Training Centre	0 (0)	238 (100)	0 (0)	5 (2)	11 (4)
Govt. School For Disabled	0 (0)	238 (100)	1 (0)	2 (1)	154 (64)
Private School For Disabled	0 (0)	238 (100)	0 (0)	8 (3)	12 (7)
Government Others	1 (0)	237 (100)	0 (0)	0 (0)	0 (0)
Private Others	0 (0)	238 (100)	1 (0)	0 (0)	0 (0)

Note : Distance A : Less than 5 km; B : Between 5-10 km; C : 10+ km.; Source : Data Analysis is based on 2011 Census.

DISCLAIMER

The Terms of Use and Disclaimer of Datanet India Private Limited (hereinafter referred to as "Datanet") for use of this analysis report of **Nabarangpur Assembly Constituency (Nabarangpur Vidhan Sabha)** :-

1. **Assembly Factbook™** is a Registered Trade Mark owned by Datanet.
2. All the maps are sketched and graphical representation only and have not been drawn to the scale and also not to represent the actual geographical area or boundary of the unit.
3. The data for the aforesaid analysis is based on authentic sources and has been culled from the various publications of Census, CSO and NSSO for district and block level data, various central and state government departments, Central & State Elections Commissions and the concerned Returning Officers' releases, Electoral Rolls, Election results and allied publications, internal assessment, surveys, estimates and analysis. Therefore, certain adjustment of data at micro level may have been done to arrive closer to the macro data.
4. Data have been provided on an "As Is" and "As AVAILABLE" basis
5. The colours shown in the maps or diagram and charts of a particular party, alliance or AC are indicative and do not represent them.
6. This publication which includes maps, sheets, graphs and data would be the property under copyright of Datanet only. The user may use these for its internal study, analysis and research purposes. It's public display, re-selling or any commercial uses by the user are not allowed.
7. Datanet has taken due care and caution in compilation and processing of data and allied information, but does not guarantee the accuracy, adequacy or completeness of any information/analysis and will be not responsible for any errors or omissions or for the results obtained from the use of such information/analysis.
8. All the contents for the publication have been culled from various authentic sources and Datanet reasonably believes such sources to be reliable, but does not make any representations, express or implied as to the accuracy or fitness of use of such information. The information or contents of the information/analysis do not constitute advice and should not be relied upon in making (or refraining from making) any decision. Any reliance placed upon the information provided by Datanet is the sole responsibility and strictly at the user's risk.
9. In no event will Datanet be liable for any damages (including, without limitation, damages for loss of business projects, or loss of profits) arising in contract, tort or otherwise from the use of or inability to use any of its contents, or from any action taken (or refrained from being taken) as a result of using the analysis or any of its contents. Datanet its directors, owners, editors, officials, employees, distributor and agents or any associate will not be liable for any errors in the information contained or any consequences arising from the use of the contents of the provided information/analysis.
10. If any provision of these terms and conditions is held invalid or illegal or unenforceable for any reason by any court of competent jurisdiction, such provision shall be severed and the remainder of provisions of the terms and conditions shall continue in full force and effect as if the Term of Use had been executed with the invalid, illegal or unenforceable provision eliminated.
11. If there are any discrepancies in the information provided, please bring it to attention of Datanet for suitable rectification measures.

**Buy Online This Complete Book At
Datanet India eBooks Store**

www.indiastatpublications.com

or go directly at

[http://www.indiastatpublications.com/
Assembly_factbook/Odisha/Nabarangpur/ Nabarangpur](http://www.indiastatpublications.com/Assembly_factbook/Odisha/Nabarangpur/Nabarangpur)

 **india**stat**elections**

ISBN : 978-93-5313-268-2

