



Odisha

# Assembly Factbook™

Rairakhol Assembly Constituency

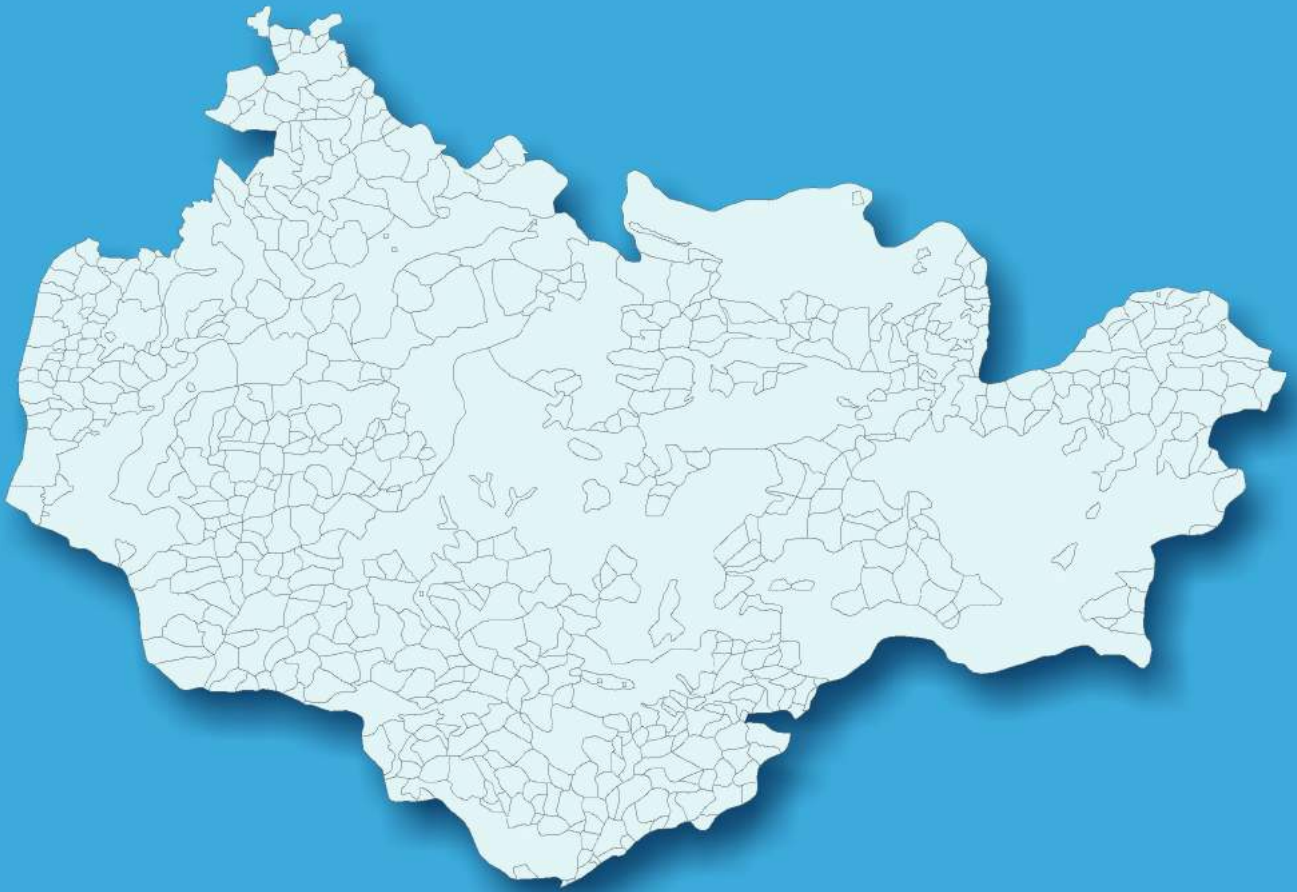


Key Electoral Data of Rairakhol  
Assembly Constituency (Vidhan Sabha)

Odisha

# Assembly Factbook™

Rairakhol Assembly Constituency



Rairakhol Vidhan Sabha

## **Editor & Director**

Dr. R.K. Thukral

## **Research Editor**

Dr. Shafeeq Rahman

## **Compiled, Researched and Published by Datanet India Pvt. Ltd.**

D-100, 1st Floor,

Okhla Industrial Area, Phase-I,  
New Delhi- 110020.

Ph.: 91-11- 43580781-84

Email : support@indiastatpublications.com

Website : www.indiastatelections.com

## **Online Book Store :**

www.indiastatpublications.com

**Report No. :** AFB/OD-018-0123

**ISBN :** 978-93-5313-283-5

**First Edition :** January, 2018

**Sixth Updated Edition :** January, 2023

**Price :** Rs. 11500/-

US\$ 310

**© Datanet India Pvt. Ltd.**

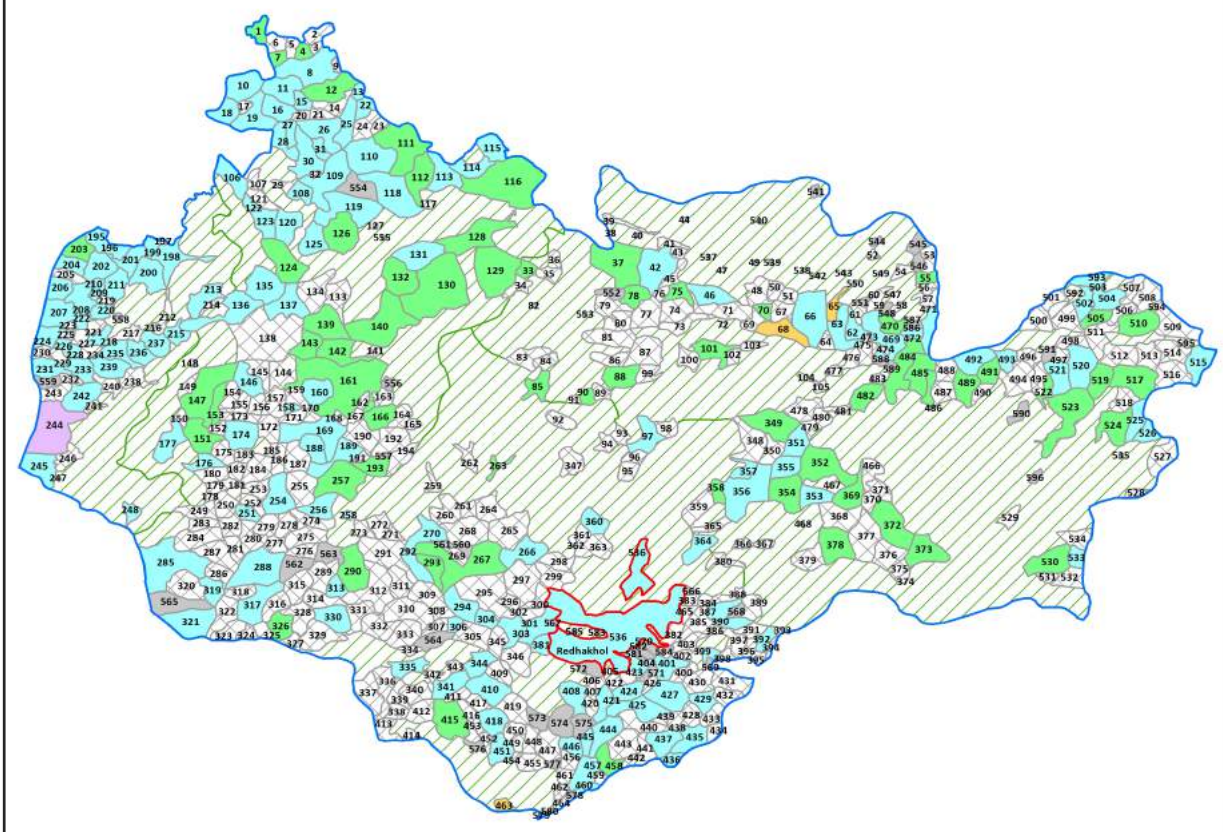
All rights reserved. No part of this book may be reproduced, stored in a retrieval system or transmitted in any form or by any means, mechanical photocopying, photographing, scanning, recording or otherwise without the prior written permission of the publisher. Please refer to Disclaimer at page no. 232 for the use of this publication.

Printed in India

No.	Particulars	Page No.
	<b>Introduction</b>	
1	Assembly Constituency - (Vidhan Sabha) at a Glance   Features of Assembly as per Delimitation Commission of India (2008)	1-2
	<b>Location and Political Maps</b>	
2	Location Map   Boundaries of Assembly Constituency - (Vidhan Sabha) in District   Boundaries of Assembly Constituency under Parliamentary Constituency - (Lok Sabha)   Town & Village-wise Winner Parties- 2019-PE, 2019-AE, 2014-PE, 2014-AE, 2009-PE and 2009-AE	3-11
	<b>Administrative Setup (2011)</b>	
3	District   Sub-district   Towns   Villages   Inhabited Villages   Uninhabited Villages   Village Panchayat   Intermediate Panchayat	12-38
	<b>Demographics (2011)</b>	
4	Population   Households   Rural/Urban Population   Towns and Villages by Population Size   Sex Ratio (Total & 0-6 Years)   Religious Population   Social Population   Literacy Rate	39-40
	<b>Electoral Features</b>	
5	Important Dates of Last Elections Held   Electors by Gender   Service Electors   Voters   Voters Turnout   Polling Stations & Average Number of Electors per Polling Station   Electors by Age Group   Present Elected Representatives	41-46
	<b>Historical Summary Election Results</b>	
6	Vote Share of Major Parties   Winning Margin (Number & Percentage)   Polarity of Parties   Summary Result of Assembly Segment of Parliamentary Elections 2019, 2014, 2009, 2004 and 1999   Summary Result of Assembly Elections 2019, 2014, 2009, 2004, 2000, 1995, 1990, 1985, 1980, 1977, 1974, 1971, 1967 and 1961	47-69
	<b>Polling Station Level Election Results</b>	
7	Name and Number of Polling Station 2019-PE, 2019-AE, 2014-PE, 2014-AE, 2009-PE and 2009-AE   Polling Station-wise Electors, Voters & Voters Turnout 2019-PE, 2019-AE, 2014-PE, 2014-AE, 2009-PE and 2009-AE   Polling Station wise Elections Results 2019-PE, 2019-AE, 2014-PE, 2014-AE, 2009-PE and 2009-AE	70-211
	<b>Share of Assembly Constituency</b>	
8	Share of Assembly Constituency - (Vidhan Sabha) in State, District and Parliamentary Constituency - (Lok Sabha)	212
	<b>Socio-Economic Amenities (2011)</b>	
9	Access to Administrative Units   Agricultural, Manufacturing and Industrial Commodities   Demographic Indicators   Education   Health & Manpower   Drinking Water Supply   Sanitation   Entertainment and Recreations Infrastructure   Power   Food Allocation Distribution and Marketing of Agriculture Commodities Infrastructure   Transport and Road Infrastructure   Communication   Banking and Financial Services   Land Use   Irrigation Source	214-228
10	<b>Abbreviation &amp; Sources</b>	229-230
11	<b>Disclaimer</b>	232

Location & Political Map

Town & Village-wise Winner Parties in Rairakhol Assembly Constituency under State Assembly Election (AE) (No. 18) 2014



AOP	BJD	BJP	INC	UV	UN	Total AC	Town (T)	Village (V)
(1V)	(1T+145V)	(3V)	(65V)	(321V)	(60V)		1T	595V

Forest Area  
 UV : Unspecified Village  
 UN : Uninhabited Village

## Administrative Setup

### List of Village Panchayat & Intermediate Panchayat (Block) Name - 2011

Village Name	Village Panchayat Name	Intermediate Panchayat Name
Ainlajharan	Kesapalli	Jujomura
Ainlapali	Dhama	Maneswar
Ainlapali	Tribanpur	Rairakhol
Alighati	Godloising	Jujomura
Ambajhari	Kadaligarh	Rairakhol
Ambajhari	Salebhata	Naktideul
Ambdar	Mochibahal	Rairakhol
Ambjhuri	Burda	Rairakhol
Amkuni	Dakara	Maneswar
Amlipani	Kayakud	Jujomura
Andhari	Kayakud	Jujomura
Angabira	Jamajori	Naktideul
Angarpoda	Luhapank	Rairakhol
Antapali	Baduapali	Maneswar
Arda	Sahaspur	Maneswar
Arkhakud	Tribanpur	Rairakhol
Ashokbandhali(Bardidinga)	Kesapalli	Jujomura
Babupali	Jhankarpali	Jujomura
Badaberna	Gadgad Bahal	Rairakhol
Badakhhol	Bharatpur	Rairakhol
Badbahal	Panimura	Naktideul
Badbhahal	Badabahal	Rairakhol
Badbil	Ghusura Mala	Naktideul
Badhindol	Bansajal	Rairakhol
Badkuda	Badabahal	Rairakhol
Badmal	Dakara	Maneswar
Badmal	Badmal	Rairakhol
Badmal	Burda	Rairakhol
Badmal (Badmal Ratna)	Bansajal	Rairakhol

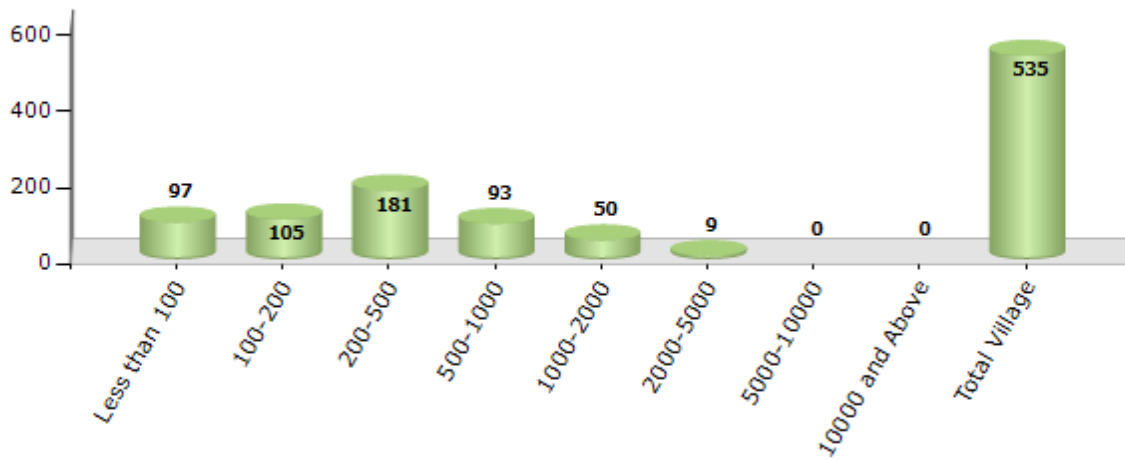
Contd....

Demographic

Number of Villages by Population Size - 2011

Less than 100	100-200	200-500	500-1000	1000-2000	2000-5000	5000-10000	10000 and Above	Total Village
97	105	181	93	50	9	0	0	535

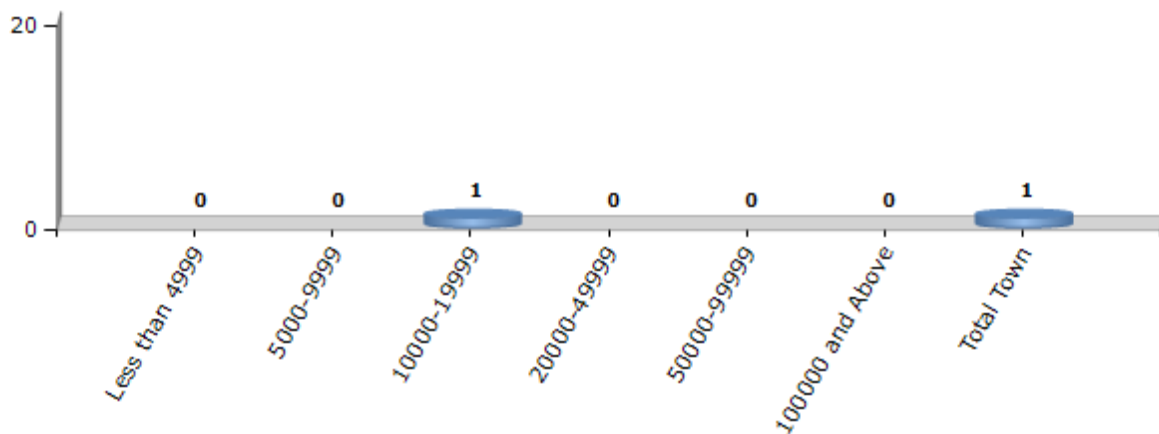
Number of Villages by Population Size - 2011



Number of Towns by Population Size - 2011

Less than 4999	5000-9999	10000-19999	20000-49999	50000-99999	100000 and Above	Total Town
0	0	1	0	0	0	1

Number of Towns by Population Size - 2011

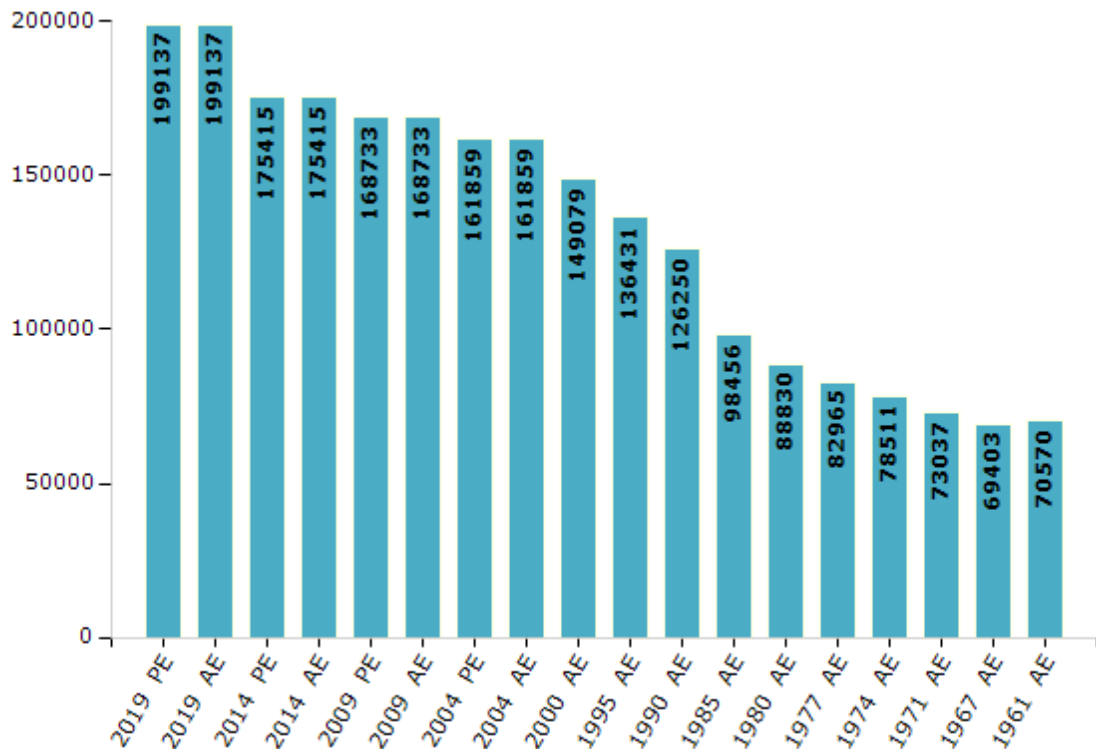


## Electoral Features

### Electors by Male & Female

Year	Male	Female	Others	Total	Year	Male	Female	Others	Total
2019 PE	100596	98517	24	199137	1990 AE	66241	60009	-	126250
2019 AE	100596	98517	24	199137	1985 AE	50768	47688	-	98456
2014 PE	90483	84916	16	175415	1980 AE	44751	44079	-	88830
2014 AE	90483	84916	16	175415	1977 AE	42520	40445	-	82965
2009 PE	86213	82520	-	168733	1974 AE	39736	38775	-	78511
2009 AE	86213	82520	-	168733	1971 AE	36698	36339	-	73037
2004 PE	83137	78722	-	161859	1967 AE	69403	0	-	69403
2004 AE	83137	78722	-	161859	1961 AE	70570	0	-	70570
2000 AE	77440	71639	-	149079	1957 AE	-	-	-	-
1999 PE	-	-	-	-	1952 AE	-	-	-	-
1995 AE	71049	65382	-	136431					

Number of Electors



Note : AE : Assembly Election, PE : Assembly Segment of Parliamentary Election

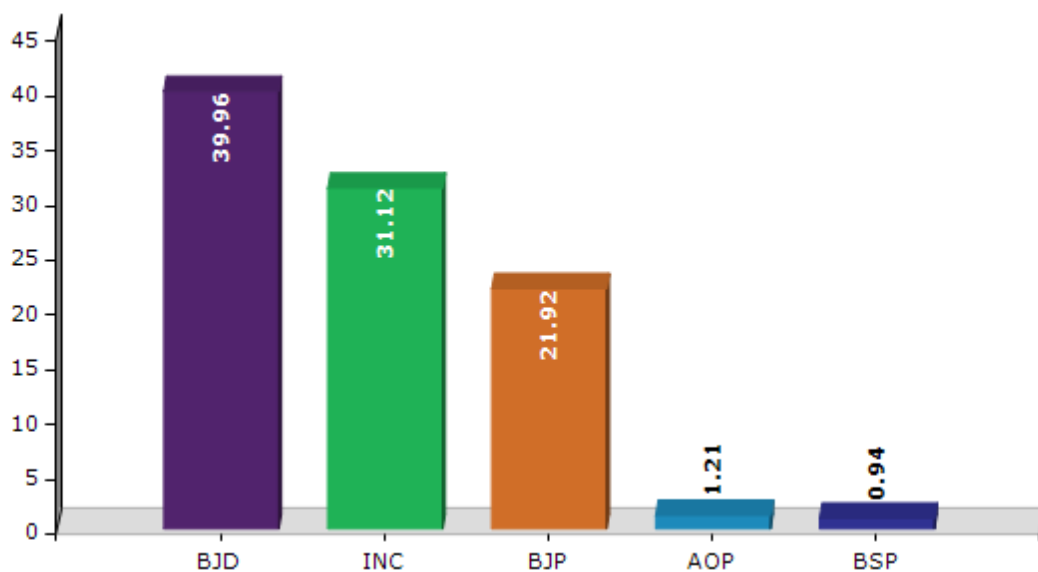


## Historical Summary Election Results

### Summary Result of Assembly Election - 2014

Candidate Name	Party	Votes	Votes %
Rohit Pujari	BJD	53849	39.96
Assaf Ali Khan	INC	41940	31.12
Pratap Kumar Pradhan	BJP	29544	21.92
Manabodha Bhoi	AOP	1627	1.21
Debdulal Bakshi	BSP	1271	0.94
Gitanjali Pradhan	SKD	1060	0.79
Laxmidhar Naik	AAP	968	0.72
Swadhin Panda	IND	928	0.69
Aparna Bagh	APOI	817	0.61
Manis Kumar Deheri	IND	658	0.49
Laxman Kumar Bhoi	PCHVP	555	0.41
Bholanath Dehury	OJM	249	0.18
	NOTA	1298	0.96

Votes Percentage of Top Parties - 2014



## Polling Station Level Election Results

### Number and Name of Polling Stations (PS) (2019 AE)

Number of Polling Stations	Name of Polling Stations	Number of Polling Stations	Name of Polling Stations
1	Chakuli	22	Panchaphut
2	Putiapali	23	Dhama-1
3	Sahasapur	24	Dhama 2
4	Sahasapur	25	Khinda
5	Sankhala	26	Subarnapur
6	Arda	27	Gainpura
7	Baduapali	28	Dakara
8	Mahulapali	29	Ambakuni
9	Labadera	30	Badamal
10	Chhachanapalli	31	Biraghat
11	Haladi	32	Jaduloisingh
12	Baunsenamura	33	Deogan
13	Salesing	34	Larasara
14	Baradol	35	Tabaloi
15	Tentulikuruda	36	Jhankarapali
16	Baragan	37	Jhankarapali-1
17	Baunshara	38	Bhabanipali
18	Dashpur	39	Mundher
19	Huma	40	Hatibari
20	Balapur	41	Kulsar
21	Kanbar	42	Barangamal

Contd....

## Polling Station Level Election Results

### Polling Station-wise Votes Secured by Overall Top Five Parties in Rairakhol Assembly in Assembly Election (AE) under Sambalpur Parliamentary Constituency in Odisha (2019)

Number of Polling Station	Winner - Rohit Pujari (BJD)	Runner-up - Assaf Ali Khan (INC)	3rd - Debendra Mohapatra (BJP)	4th - Samar Kumar Pradhan (IND)	5th - Jayalal Behera (IND)	NOTA	Other	Total Votes Secured
36	300	157	278	4	3	6	9	757
37	194	152	203	4	1	1	13	568
38	333	46	88	0	2	2	4	475
39	282	172	412	5	7	10	13	901
40	183	112	217	7	4	5	7	535
41	319	103	298	5	7	3	5	740
42	160	22	178	2	0	2	1	365
43	412	86	166	8	5	7	15	699
44	167	27	227	7	14	3	6	451
45	356	127	263	2	15	1	8	772
46	238	114	186	8	13	9	10	578
47	194	194	136	5	15	2	13	559
48	323	40	283	2	0	2	9	659
49	62	144	72	4	3	9	15	309
50	228	64	109	0	2	3	4	410
51	237	141	95	1	2	0	4	480
52	304	191	154	1	13	13	13	689
53	274	142	376	5	7	13	2	819
54	168	31	93	2	5	5	9	313
55	112	342	112	7	5	16	18	612
56	160	217	56	8	10	8	9	468
57	100	246	87	2	2	10	13	460
58	62	164	42	2	12	7	4	293
59	249	407	164	9	46	18	12	905
60	149	379	80	6	14	14	27	669
61	198	204	179	21	27	13	3	645
62	114	573	53	4	2	7	13	766
63	84	470	38	6	4	7	7	616
64	176	156	139	3	2	4	1	481
65	132	335	49	5	3	11	12	547
66	161	77	38	6	4	3	3	292
67	330	313	160	4	3	15	7	832
68	230	92	91	9	13	2	7	444
69	215	254	159	3	27	2	10	670
70	199	231	65	2	7	6	3	513

Contd....

## Polling Station Level Election Results

### Winner, Runner-up and 3rd Party Position & Winning Margin According to Polling Stations in Rairakhol Assembly in Assembly Election (AE) under Sambalpur Parliamentary Constituency in Odisha (2019)

Polling Station Number	Winner Party	Winner Votes (%)	Runner-up Party	Runner-up Votes (%)	Winning Margin Votes (%)	Third Party	Third Party Votes (%)	Other Votes (%)
71	BJD	244 (44.2)	INC	178 (32.25)	66 (11.95)	BJP	89 (16.12)	41 (7.43)
72	BJD	197 (34.32)	INC	166 (28.92)	31 (5.4)	BJP	154 (26.83)	57 (9.93)
73	INC	262 (64.22)	BJD	73 (17.89)	189 (46.33)	BJP	35 (8.58)	38 (9.31)
74	NV	NV (NV)	NV	NV (NV)	NV (NV)	NV	NV (NV)	NV (NV)
75	BJP	294 (42.24)	INC	231 (33.19)	63 (9.05)	BJD	149 (21.41)	22 (3.16)
76	BJP	287 (37.18)	BJD	252 (32.64)	35 (4.54)	INC	204 (26.42)	29 (3.76)
77	BJD	237 (35.11)	INC	212 (31.41)	25 (3.7)	BJP	208 (30.81)	18 (2.67)
78	BJP	310 (38.56)	BJD	290 (36.07)	20 (2.49)	INC	162 (20.15)	42 (5.22)
79	BJP	241 (42.06)	BJD	221 (38.57)	20 (3.49)	INC	91 (15.88)	20 (3.49)
80	BJP	223 (39.96)	BJD	215 (38.53)	8 (1.43)	INC	91 (16.31)	29 (5.2)
81	BJP	294 (39.52)	BJD	256 (34.41)	38 (5.11)	INC	149 (20.03)	45 (6.05)
82	BJP	391 (41.73)	BJD	300 (32.02)	91 (9.71)	INC	228 (24.33)	18 (1.92)
83	BJD	234 (49.16)	BJP	186 (39.08)	48 (10.08)	INC	41 (8.61)	15 (3.15)
84	BJP	340 (42.24)	BJD	288 (35.78)	52 (6.46)	INC	157 (19.5)	20 (2.48)
85	BJP	541 (53.56)	BJD	269 (26.63)	272 (26.93)	INC	159 (15.74)	41 (4.06)
86	BJP	503 (54.67)	BJD	276 (30)	227 (24.67)	INC	122 (13.26)	19 (2.07)
87	BJD	189 (48.21)	BJP	148 (37.76)	41 (10.45)	INC	46 (11.73)	9 (2.3)
88	BJP	198 (42.13)	BJD	168 (35.74)	30 (6.39)	INC	82 (17.45)	22 (4.68)
89	BJD	306 (38.78)	BJP	278 (35.23)	28 (3.55)	INC	165 (20.91)	40 (5.07)
90	BJP	263 (37.41)	INC	236 (33.57)	27 (3.84)	BJD	167 (23.76)	37 (5.26)
91	BJP	204 (48.34)	BJD	129 (30.57)	75 (17.77)	INC	57 (13.51)	32 (7.58)
92	BJP	316 (48.84)	BJD	180 (27.82)	136 (21.02)	INC	114 (17.62)	37 (5.72)
93	BJP	280 (55.56)	BJD	144 (28.57)	136 (26.99)	INC	61 (12.1)	19 (3.77)
94	BJP	337 (46.94)	BJD	296 (41.23)	41 (5.71)	INC	69 (9.61)	16 (2.23)
95	BJP	330 (44.35)	BJD	245 (32.93)	85 (11.42)	INC	138 (18.55)	31 (4.17)
96	BJP	256 (49.23)	BJD	216 (41.54)	40 (7.69)	INC	34 (6.54)	14 (2.69)
97	BJD	290 (44.75)	BJP	246 (37.96)	44 (6.79)	INC	74 (11.42)	38 (5.86)
98	BJP	376 (42.73)	BJD	355 (40.34)	21 (2.39)	INC	115 (13.07)	34 (3.86)
99	BJP	258 (52.87)	BJD	178 (36.48)	80 (16.39)	INC	43 (8.81)	9 (1.84)
100	BJD	284 (35.19)	BJP	282 (34.94)	2 (0.25)	INC	175 (21.69)	66 (8.18)
101	BJP	330 (44.9)	BJD	271 (36.87)	59 (8.03)	INC	98 (13.33)	36 (4.9)
102	BJP	329 (45.01)	BJD	195 (26.68)	134 (18.33)	INC	184 (25.17)	23 (3.15)
103	BJD	208 (49.88)	INC	99 (23.74)	109 (26.14)	BJP	81 (19.42)	29 (6.95)
104	BJP	278 (57.8)	INC	135 (28.07)	143 (29.73)	BJD	55 (11.43)	13 (2.7)
105	BJD	259 (42.05)	INC	186 (30.19)	73 (11.86)	BJP	156 (25.32)	15 (2.44)

Contd....

## Socio-Economic Amenities - Rural

### Access to Education Facilities

Particulars	Number of Villages (% of Population)				
	Available	Not Available	If Not Available (Distance of Nearest Facility)		
			A	B	C
Govt. Primary School	399 (93)	136 (7)	110 (5)	22 (1)	1 (0)
Private Primary School	21 (6)	514 (94)	0 (0)	0 (0)	0 (0)
Govt. Middle School	179 (61)	356 (39)	193 (23)	144 (14)	13 (1)
Private Middle School	18 (7)	517 (93)	2 (0)	2 (0)	0 (0)
Govt. Secondary School	74 (35)	461 (65)	195 (30)	219 (28)	0 (0)
Private Secondary School	15 (5)	520 (95)	27 (5)	16 (2)	0 (0)
Govt. Senior Secondary School	9 (5)	526 (95)	34 (9)	129 (23)	213 (36)
Private Senior Secondary School	3 (1)	532 (99)	18 (5)	70 (12)	59 (9)
Govt. Arts and Science Degree College	3 (2)	532 (98)	4 (2)	54 (11)	289 (54)
Private Arts and Science Degree College	3 (3)	532 (97)	15 (3)	53 (10)	114 (16)
Govt. Engineering College	0 (0)	535 (100)	0 (0)	1 (0)	534 (100)
Private Engineering College	0 (0)	535 (100)	0 (0)	0 (0)	0 (0)
Govt. Medicine College	0 (0)	535 (100)	0 (0)	1 (0)	534 (100)
Private Medicine College	0 (0)	535 (100)	0 (0)	0 (0)	0 (0)
Govt. Management Institute	0 (0)	535 (100)	0 (0)	1 (0)	88 (14)
Private Management Institute	0 (0)	535 (100)	1 (0)	1 (1)	444 (85)
Govt. Polytechnic	0 (0)	535 (100)	1 (0)	5 (3)	335 (59)
Private Polytechnic	0 (0)	535 (100)	0 (0)	2 (0)	66 (14)
Govt. Vocational Training School/ITI	0 (0)	535 (100)	5 (3)	2 (1)	189 (41)
Private Vocational Training School/ITI	1 (1)	534 (99)	6 (1)	31 (7)	234 (36)
Govt. Non Formal Training Centre	0 (0)	535 (100)	1 (0)	4 (2)	369 (68)
Private Non Formal Training Centre	0 (0)	535 (100)	0 (0)	1 (0)	17 (5)
Govt. School For Disabled	0 (0)	535 (100)	0 (0)	0 (0)	387 (70)
Private School For Disabled	0 (0)	535 (100)	0 (0)	0 (0)	2 (1)
Government Others	0 (0)	535 (100)	0 (0)	0 (0)	2 (0)
Private Others	0 (0)	535 (100)	0 (0)	0 (0)	0 (0)

Note : Distance A : Less than 5 km; B : Between 5-10 km; C : 10+ km.; Source : Data Analysis is based on 2011 Census.

## DISCLAIMER

The Terms of Use and Disclaimer of Datanet India Private Limited (hereinafter referred to as "Datanet") for use of this analysis report of **Rairakhol Assembly Constituency (Rairakhol Vidhan Sabha)** :-

1. **Assembly Factbook™** is a Registered Trade Mark owned by Datanet.
2. All the maps are sketched and graphical representation only and have not been drawn to the scale and also not to represent the actual geographical area or boundary of the unit.
3. The data for the aforesaid analysis is based on authentic sources and has been culled from the various publications of Census, CSO and NSSO for district and block level data, various central and state government departments, Central & State Elections Commissions and the concerned Returning Officers' releases, Electoral Rolls, Election results and allied publications, internal assessment, surveys, estimates and analysis. Therefore, certain adjustment of data at micro level may have been done to arrive closer to the macro data.
4. Data have been provided on an "As Is" and "As AVAILABLE" basis
5. The colours shown in the maps or diagram and charts of a particular party, alliance or AC are indicative and do not represent them.
6. This publication which includes maps, sheets, graphs and data would be the property under copyright of Datanet only. The user may use these for its internal study, analysis and research purposes. It's public display, re-selling or any commercial uses by the user are not allowed.
7. Datanet has taken due care and caution in compilation and processing of data and allied information, but does not guarantee the accuracy, adequacy or completeness of any information/analysis and will be not responsible for any errors or omissions or for the results obtained from the use of such information/analysis.
8. All the contents for the publication have been culled from various authentic sources and Datanet reasonably believes such sources to be reliable, but does not make any representations, express or implied as to the accuracy or fitness of use of such information. The information or contents of the information/analysis do not constitute advice and should not be relied upon in making (or refraining from making) any decision. Any reliance placed upon the information provided by Datanet is the sole responsibility and strictly at the user's risk.
9. In no event will Datanet be liable for any damages (including, without limitation, damages for loss of business projects, or loss of profits) arising in contract, tort or otherwise from the use of or inability to use any of its contents, or from any action taken (or refrained from being taken) as a result of using the analysis or any of its contents. Datanet its directors, owners, editors, officials, employees, distributor and agents or any associate will not be liable for any errors in the information contained or any consequences arising from the use of the contents of the provided information/analysis.
10. If any provision of these terms and conditions is held invalid or illegal or unenforceable for any reason by any court of competent jurisdiction, such provision shall be severed and the remainder of provisions of the terms and conditions shall continue in full force and effect as if the Term of Use had been executed with the invalid, illegal or unenforceable provision eliminated.
11. If there are any discrepancies in the information provided, please bring it to attention of Datanet for suitable rectification measures.

**Buy Online This Complete Book At**  
**Datanet India eBooks Store**

[www.indiastatpublications.com](http://www.indiastatpublications.com)

or go directly at

[http://www.indiastatpublications.com/  
Assembly\\_factbook/Odisha/Sambalpur/ Rairakhol](http://www.indiastatpublications.com/Assembly_factbook/Odisha/Sambalpur/Rairakhol)

 **india**stat**elections**

ISBN : 978-93-5313-283-5

