



Punjab

# Assembly Factbook™

Mansa Assembly Constituency



Key Electoral Data of Mansa  
Assembly Constituency (Vidhan Sabha)

Punjab

# Assembly Factbook™

Mansa Assembly Constituency



Mansa Vidhan Sabha

**Editor & Director**

Dr. R.K. Thukral

**Research Editor**

Dr. Shafeeq Rahman

**Compiled, Researched and Published by  
Datanet India Pvt. Ltd.**

D-100, 1st Floor,

Okhla Industrial Area, Phase-I,

New Delhi- 110020.

Ph.: 91-11- 43580781-84

Email : support@indiastatpublications.com

Website : www.indiastatelections.com

**Online Book Store :**

www.indiastatpublications.com

**Report No. :** AFB/PB-096-0125

**ISBN :** 978-93-5822-557-0

**First Edition :** January, 2018

**Eighth Updated Edition :** January, 2025

**Price :** Rs.11500/-

US\$ 310

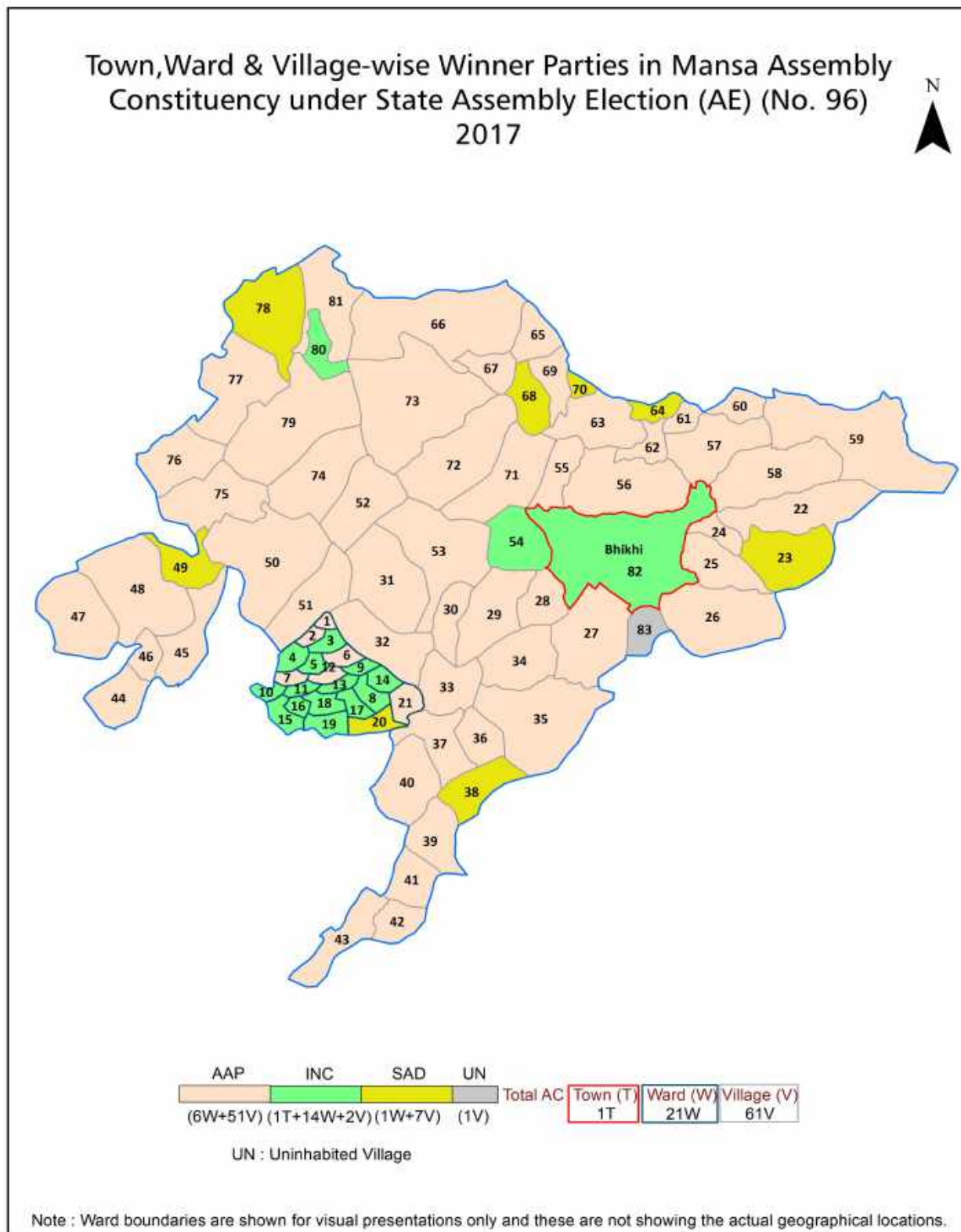
© **Datanet India Pvt. Ltd.**

All rights reserved. No part of this book may be reproduced, stored in a retrieval system or transmitted in any form or by any means, mechanical photocopying, photographing, scanning, recording or otherwise without the prior written permission of the publisher. Please refer to Disclaimer at page no. 211 for the use of this publication.

Printed in India

No.	Particulars	Page No.
	<b>Introduction</b>	
1	Assembly Constituency - (Vidhan Sabha) at a Glance   Features of Assembly as per Delimitation Commission of India (2008)	1-2
	<b>Location and Political Maps</b>	
2	Location Map   Boundaries of Assembly Constituency - (Vidhan Sabha) in District   Boundaries of Assembly Constituency under Parliamentary Constituency - (Lok Sabha)   Town, Ward & Village-wise Winner Parties- 2024, 2022, 2019, 2017, 2014, 2012 and 2009	3-11
	<b>Administrative Setup (2011)</b>	
3	District   Sub-district   Towns   Villages   Inhabited Villages   Uninhabited Villages   Village Panchayat   Intermediate Panchayat	12-17
	<b>Demographics (2011)</b>	
4	Population   Households   Rural/Urban Population   Towns, Ward and Villages by Population Size   Sex Ratio (Total & 0-6 Years)   Religious Population   Social Population   Literacy Rate	18-20
	<b>Electoral Features</b>	
5	Important Dates of Last Elections Held   Electors by Gender   Service Electors   Voters   Voters Turnout   Polling Stations & Average Number of Electors per Polling Station   Electors by Age Group   Present Elected Representatives	21-26
	<b>Historical Summary Election Results</b>	
6	Vote Share of Major Parties   Winning Margin (Number & Percentage)   Polarity of Parties   Summary Result of Assembly Segment of Parliamentary Elections 2024, 2019, 2014, 2009, 2004 and 1999   Summary Result of Assembly Elections 2022, 2017, 2012, 2007, 2002, 1997, 1992, 1985, 1980, 1977, 1972, 1969, 1967, 1962 and 1957	27-50
	<b>Polling Station Level Election Results</b>	
7	Name and Number of Polling Station 2024, 2022, 2019, 2017, 2014, 2012 and 2009   Polling Station-wise Electors, Voters & Voters Turnout 2024, 2022, 2019, 2017, 2014, 2012 and 2009   Polling Station wise Elections Results 2024, 2022, 2019, 2017, 2014, 2012 and 2009	51-172
8	<b>Panchayat Election Results</b> Panchayat Result 2013	173-192
	<b>Share of Assembly Constituency</b>	
9	Share of Assembly Constituency - (Vidhan Sabha) in State, District and Parliamentary Constituency - (Lok Sabha)	193
	<b>Socio-Economic Amenities (2011)</b>	
10	Access to Administrative Units   Agricultural, Manufacturing and Industrial Commodities   Demographic Indicators   Education   Health & Manpower   Drinking Water Supply   Sanitation   Entertainment and Recreations Infrastructure   Power   Food Allocation Distribution and Marketing of Agriculture Commodities Infrastructure   Transport and Road Infrastructure   Communication   Banking and Financial Services   Land Use   Irrigation Source	195-209
11	<b>Abbreviation &amp; Sources</b>	210
12	<b>Disclaimer</b>	211

## Location & Political Map



## Administrative Setup

### List of Village Panchayat & Intermediate Panchayat (Block) Name- 2011

Village Name	Village Panchayat Name	Intermediate Panchayat Name
Aklia (6)	Aklia	Bhikhi
Ali Sher Khurd (11)	Ali Sher Khurd	Bhikhi
Alisher Kalan (12)	Alisher Kalan	Bhikhi
Anupgarh (10)	Anupgarh	Bhikhi
Aspal (73)	Aspal	Mansa
Atla Kalan (17)	Atla Kalan	Bhikhi
Atla Khurd (18)	Atla Khurd	Bhikhi
Bapiana (47)	Bapiana	Bhikhi
Barnala (116)	Barnala	Mansa
Bhai Desa (71)	Bhai Desa	Mansa
Bhaini Bagha (59)	Bhaini Bagha	Mansa
Bhopal (16)	Bhopal	Bhikhi
Bir Khurd (27)	Bir Khurd	Bhikhi
Burj Dhilwan (63)	Burj Dhilwan	Mansa
Burj Hari (61)	Burj Hari	Mansa
Burj Jhabran (5)	Burj Jhabran	Bhikhi
Burj Rathai (60)	Burj Rathai	Mansa
Chakerian (117)	Chakerian	Mansa
Dalel Singhwala (51)	Dalel Singhwala	Mansa
Deluana (122)	Deluana	Mansa
Dhalewan (30)	Dhalewan	Bhikhi
Fafre Bhaike (46)	Fafre Bhaike	Bhikhi
Gurthari (22)	Gurthari	Bhikhi
Hamirgarh Urf Dhaipai (26)	Hamirgarh Urf Dhaipai	Bhikhi
Heron Kalan (25)	Heron Kalan	Bhikhi
Hirewala (120)	Hirewala	Mansa
Hodla kalan (31)	Hodla Kalan	Bhikhi
Jassarwala (28)	Jassarwala	Bhikhi
Joga (8)	Joga	Bhikhi

Contd....

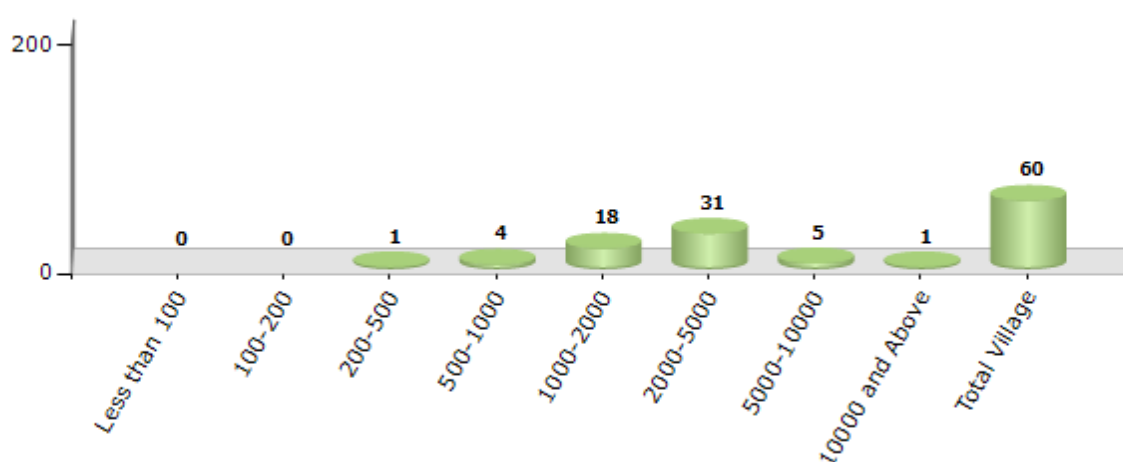


## Demographics

### Number of Villages by Population Size - 2011

Less than 100	100-200	200-500	500-1000	1000-2000	2000-5000	5000-10000	10000 and Above	Total Village
0	0	1	4	18	31	5	1	60

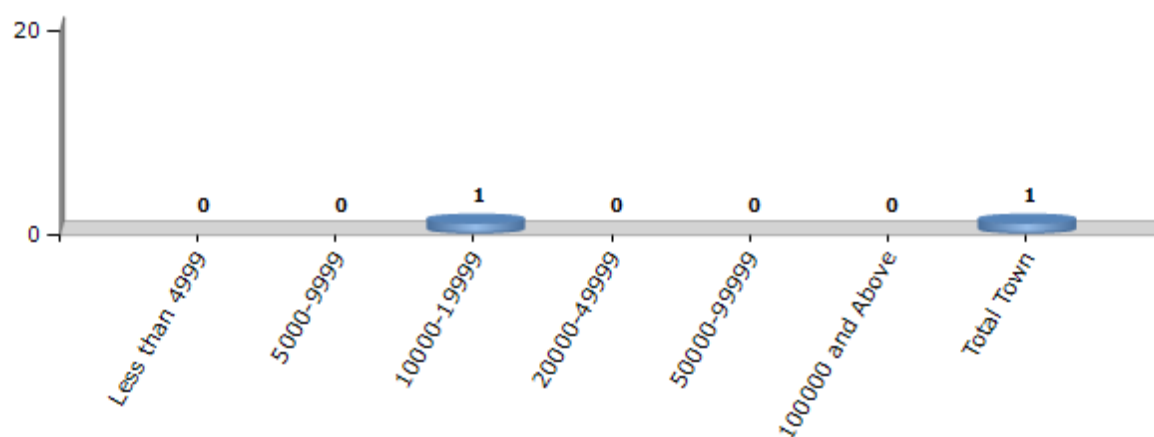
Number of Villages by Population Size - 2011



### Number of Towns by Population Size - 2011

Less than 4999	5000-9999	10000-19999	20000-49999	50000-99999	100000 and Above	Total Town
0	0	1	0	0	0	1

Number of Towns by Population Size - 2011



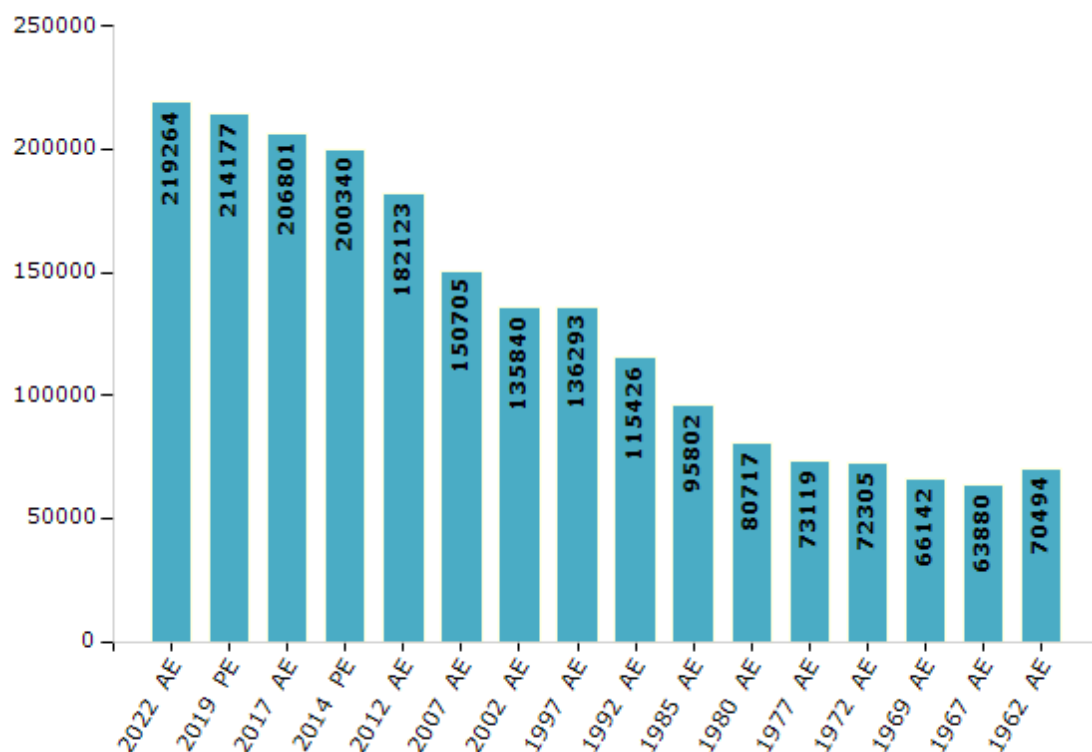
## Electoral Features

### Electors by Male & Female

Year	Male	Female	Others	Total
2022 AE	116429	102832	3	219264
2019 PE	114052	100124	1	214177
2017 AE	110171	96629	1	206801
2014 PE	106973	93364	3	200340
2012 AE	97537	84586	0	182123
2009 PE	-	-	-	-
2007 AE	79147	71558	-	150705
2004 PE	-	-	-	-
2002 AE	71875	63965	-	135840
1999 PE	-	-	-	-
1997 AE	73151	63142	-	136293

Year	Male	Female	Others	Total
1992 AE	62801	52625	-	115426
1985 AE	52294	43508	-	95802
1980 AE	44733	35984	-	80717
1977 AE	41128	31991	-	73119
1972 AE	40216	32089	-	72305
1969 AE	37560	28582	-	66142
1967 AE	-	-	-	63880
1962 AE	-	-	-	70494
1957 AE	-	-	-	-
1952 AE	-	-	-	-

Number of Electors



**Note :** AE : Assembly Election, PE : Assembly Segment of Parliamentary Election

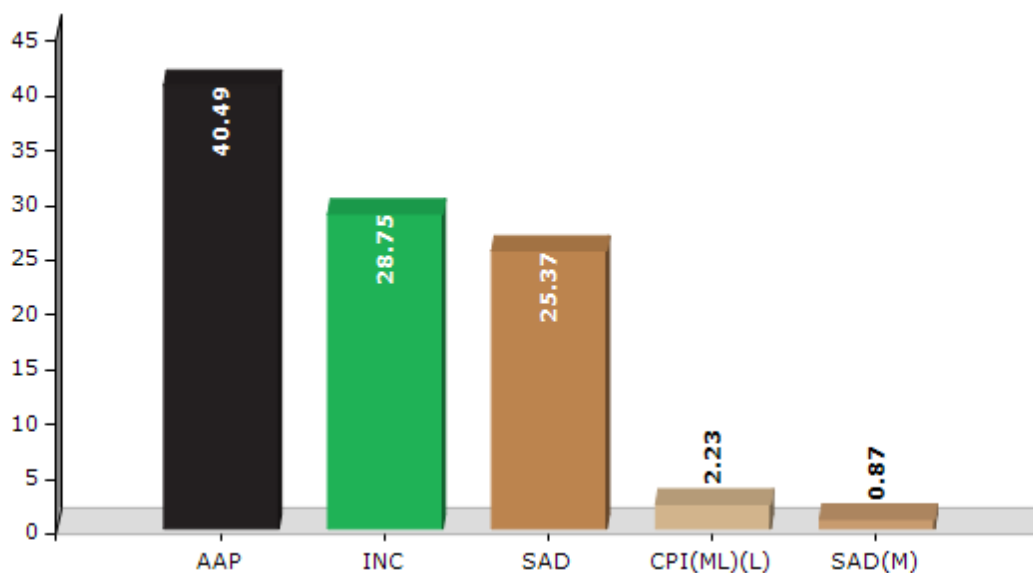


## Historical Summary Election Results

### Summary Result of Assembly Election - 2017

Candidate Name	Party	Votes	Votes %
Nazar Singh Manshahia	AAP	70586	40.49
Manoj Bala	INC	50117	28.75
Jagdeep Singh Nakai	SAD	44232	25.37
Ranjit Singh Tamkot	CPI(ML)(L)	3883	2.23
Jaskaran Singh Kahan Singh Wala	SAD(M)	1519	0.87
Bhupinder Singh Birval	BSP	1385	0.79
Anil Jony	IND	879	0.5
Mangu Singh	APPA	472	0.27
	NOTA	1253	0.72

Votes Percentage of Top Parties - 2017



## Polling Station Level Election Results

### Number and Name of Polling Stations (PS) (2022)

Number of Polling Stations	Name of Polling Stations	Number of Polling Stations	Name of Polling Stations
1	Govt. Secondary School, Aklia	22	Govt. Secondary School(Girls), Joga
2	Govt. Secondary School, Aklia	23	Govt. Secondary School(Boys), Joga
3	Govt. Secondary School, Aklia	24	Govt. Secondary School(Boys), Joga
4	Govt. Primary School Aklia	25	Govt. Secondary School(Boys), Joga
5	Govt. Primary School Aklia	26	Govt. Primary School Anupgarh
6	Govt. Primary School Aklia	27	Govt. High School, Makha Chehlan
7	Govt. High School Rarh	28	Govt. High School Ralla
8	Govt. High School Rarh	29	Govt. High School Ralla
9	Govt. Primary School Burj Dhilwan	30	Govt. High School Ralla
10	Govt. Primary School Burj Dhilwan	31	Govt. Primary School Ralla
11	Govt. Primary School Burj Dhilwan	32	Govt. Primary School Ralla
12	Govt. Primary School Kharak Singh Wala	33	Govt. Primary School Ralla
13	Govt. Primary School Kharak Singh Wala	34	Govt. Primary School, Burj Hari
14	Govt. Secondary School, Uhba Burj Dhilwan	35	Govt. High School Burj Hari
15	Govt. Secondary School, Uhba Burj Dhilwan	36	Govt. High School Burj Hari
16	Govt. Primary School Ubha Burj Dhilwan	37	Govt. High School Burj Rathi
17	Govt. Primary School Ubha Burj Dhilwan	38	Govt. High School Burj Rathi
18	Govt. Primary School Burj Jhabran	39	Govt. Middle School, Bhai Desa
19	Govt. Secondary School(Girls), Joga	40	Govt.High School Kotli Kalan
20	Govt. Secondary School(Girls), Joga	41	Govt.High School Kotli Kalan
21	Govt. Secondary School(Girls), Joga	42	Govt. Primary School Kotli Kalan

Contd....

## Polling Station Level Election Results

### Polling Station-wise Votes Secured by Overall Top Five Parties in Mansa Assembly in Assembly Election (AE) under Bathinda Parliamentary Constituency in Punjab (2022)

Number of Polling Station	Winner - Dr.Vijay Singla (AAP)	Runner-up - Shubhdeep Singh Sidhu Moose Wala (INC)	3rd - Prem Kumar Arora (SAD)	4th - Rajinder Singh (SAD(M))	5th - Jiwan Dass Bawa (PLCP)	NOTA	Other	Total Votes Secured
36	529	87	191	9	2	8	19	845
37	521	162	245	14	4	2	12	960
38	497	152	298	11	0	6	13	977
39	425	299	185	6	2	3	15	935
40	541	98	209	23	2	6	15	894
41	528	105	128	46	1	0	17	825
42	517	189	131	22	1	5	17	882
43	410	107	81	19	1	5	12	635
44	417	130	83	10	1	3	9	653
45	305	135	55	9	0	3	11	518
46	346	129	42	12	2	5	14	550
47	345	81	64	6	6	3	15	520
48	473	137	58	61	1	4	15	749
49	284	161	39	33	4	4	15	540
50	716	94	70	27	3	2	13	925
51	525	88	156	54	1	8	19	851
52	490	153	198	28	3	6	14	892
53	512	197	145	29	1	7	16	907
54	642	97	130	28	1	8	21	927
55	585	129	176	23	3	5	20	941
56	761	109	86	16	1	3	11	987
57	640	132	96	34	3	2	21	928
58	464	120	43	29	2	2	7	667
59	468	208	307	7	0	4	9	1003
60	517	169	108	27	2	8	20	851
61	480	294	186	14	0	8	9	991
62	478	159	154	8	5	4	13	821
63	422	176	90	14	13	6	15	736
64	456	97	100	25	24	4	21	727
65	129	91	43	7	1	1	1	273
66	440	228	214	65	24	2	9	982
67	519	196	236	24	4	3	15	997
68	461	156	111	28	4	7	14	781
69	484	85	136	44	0	2	12	763
70	447	140	98	40	4	5	12	746

Contd....

## Polling Station Level Election Results

**Winner, Runner-up and 3rd Party Position & Winning Margin According to Polling Stations in Mansa Assembly in Assembly Election (AE) under Bathinda Parliamentary Constituency in Punjab (2022)**

Polling Station Number	Winner Party	Winner Votes (%)	Runner-up Party	Runner-up Votes (%)	Winning Margin Votes (%)	Third Party	Third Party Votes (%)	Other Votes (%)
71	INC	420 (51.03)	AAP	238 (28.92)	182 (22.11)	SAD	119 (14.46)	46 (5.59)
72	AAP	339 (49.27)	INC	238 (34.59)	101 (14.68)	SAD	71 (10.32)	40 (5.81)
73	AAP	516 (61.8)	INC	180 (21.56)	336 (40.24)	SAD	115 (13.77)	24 (2.87)
74	AAP	449 (51.79)	INC	298 (34.37)	151 (17.42)	SAD	90 (10.38)	30 (3.46)
75	AAP	596 (64.02)	INC	141 (15.15)	455 (48.87)	SAD	133 (14.29)	61 (6.55)
76	AAP	607 (62.19)	INC	165 (16.91)	442 (45.28)	SAD	159 (16.29)	45 (4.61)
77	AAP	397 (41.23)	INC	331 (34.37)	66 (6.86)	SAD	199 (20.66)	36 (3.74)
78	AAP	530 (59.82)	SAD	179 (20.2)	351 (39.62)	INC	144 (16.25)	33 (3.72)
79	AAP	436 (56.92)	SAD	170 (22.19)	266 (34.73)	INC	135 (17.62)	25 (3.26)
80	AAP	437 (54.15)	SAD	210 (26.02)	227 (28.13)	INC	136 (16.85)	24 (2.97)
81	AAP	462 (54.55)	SAD	215 (25.38)	247 (29.17)	INC	144 (17)	26 (3.07)
82	AAP	394 (58.98)	INC	135 (20.21)	259 (38.77)	SAD	119 (17.81)	20 (2.99)
83	AAP	451 (57.38)	SAD	171 (21.76)	280 (35.62)	INC	146 (18.58)	18 (2.29)
84	AAP	435 (54.92)	INC	182 (22.98)	253 (31.94)	SAD	97 (12.25)	78 (9.85)
85	AAP	438 (54.96)	SAD	166 (20.83)	272 (34.13)	INC	150 (18.82)	43 (5.4)
86	AAP	403 (54.61)	SAD	170 (23.04)	233 (31.57)	INC	132 (17.89)	33 (4.47)
87	AAP	443 (58.68)	SAD	157 (20.79)	286 (37.89)	INC	117 (15.5)	38 (5.03)
88	AAP	357 (51.29)	INC	159 (22.84)	198 (28.45)	SAD	116 (16.67)	64 (9.2)
89	AAP	338 (56.71)	INC	137 (22.99)	201 (33.72)	SAD	92 (15.44)	29 (4.87)
90	AAP	261 (43.14)	SAD	161 (26.61)	100 (16.53)	INC	154 (25.45)	29 (4.79)
91	AAP	283 (40.96)	SAD	208 (30.1)	75 (10.86)	INC	176 (25.47)	24 (3.47)
92	AAP	288 (36.64)	SAD	256 (32.57)	32 (4.07)	INC	207 (26.34)	35 (4.45)
93	AAP	354 (48.9)	INC	183 (25.28)	171 (23.62)	SAD	151 (20.86)	36 (4.97)
94	AAP	479 (57.37)	INC	177 (21.2)	302 (36.17)	SAD	156 (18.68)	23 (2.75)
95	AAP	474 (58.96)	SAD	181 (22.51)	293 (36.45)	INC	127 (15.8)	22 (2.74)
96	AAP	470 (58.24)	SAD	148 (18.34)	322 (39.9)	INC	141 (17.47)	48 (5.95)
97	AAP	500 (67.48)	SAD	127 (17.14)	373 (50.34)	INC	86 (11.61)	28 (3.78)
98	AAP	499 (68.83)	INC	118 (16.28)	381 (52.55)	SAD	87 (12)	21 (2.9)
99	AAP	411 (59.39)	INC	145 (20.95)	266 (38.44)	SAD	101 (14.6)	35 (5.06)
100	AAP	541 (69.27)	INC	118 (15.11)	423 (54.16)	SAD	87 (11.14)	35 (4.48)
101	AAP	499 (63.65)	INC	147 (18.75)	352 (44.9)	SAD	111 (14.16)	27 (3.44)
102	AAP	475 (57.51)	INC	175 (21.19)	300 (36.32)	SAD	152 (18.4)	24 (2.91)
103	AAP	516 (57.85)	INC	211 (23.65)	305 (34.2)	SAD	135 (15.13)	30 (3.36)
104	AAP	577 (65.49)	INC	207 (23.5)	370 (41.99)	SAD	76 (8.63)	21 (2.38)
105	AAP	476 (58.91)	INC	171 (21.16)	305 (37.75)	SAD	134 (16.58)	27 (3.34)

Contd....

## Socio-Economic Amenities - Rural

### Access to Education Facilities

Particulars	Number of Villages (% of Population)				
	Available	Not Available	If Not Available (Distance of Nearest Facility)		
			A	B	C
Govt. Primary School	59 (100)	1 (0)	1 (0)	0 (0)	0 (0)
Private Primary School	30 (59)	30 (41)	0 (0)	0 (0)	0 (0)
Govt. Middle School	38 (65)	22 (35)	18 (26)	1 (2)	0 (0)
Private Middle School	10 (29)	50 (71)	1 (1)	0 (0)	0 (0)
Govt. Secondary School	29 (62)	31 (38)	12 (12)	12 (17)	4 (3)
Private Secondary School	8 (20)	52 (80)	1 (3)	0 (0)	0 (0)
Govt. Senior Secondary School	13 (38)	47 (62)	18 (23)	20 (28)	6 (6)
Private Senior Secondary School	6 (17)	54 (83)	0 (0)	0 (0)	0 (0)
Govt. Arts and Science Degree College	1 (4)	59 (96)	3 (5)	26 (38)	30 (54)
Private Arts and Science Degree College	0 (0)	60 (100)	0 (0)	0 (0)	0 (0)
Govt. Engineering College	0 (0)	60 (100)	1 (3)	2 (2)	51 (86)
Private Engineering College	0 (0)	60 (100)	0 (0)	0 (0)	6 (10)
Govt. Medicine College	0 (0)	60 (100)	0 (0)	0 (0)	58 (97)
Private Medicine College	0 (0)	60 (100)	0 (0)	0 (0)	2 (3)
Govt. Management Institute	0 (0)	60 (100)	0 (0)	1 (1)	56 (95)
Private Management Institute	0 (0)	60 (100)	0 (0)	0 (0)	3 (4)
Govt. Polytechnic	0 (0)	60 (100)	1 (1)	10 (20)	41 (64)
Private Polytechnic	0 (0)	60 (100)	0 (0)	0 (0)	8 (14)
Govt. Vocational Training School/ITI	0 (0)	60 (100)	1 (1)	10 (16)	48 (81)
Private Vocational Training School/ITI	0 (0)	60 (100)	0 (0)	0 (0)	1 (1)
Govt. Non Formal Training Centre	0 (0)	60 (100)	1 (1)	4 (5)	55 (94)
Private Non Formal Training Centre	0 (0)	60 (100)	0 (0)	0 (0)	0 (0)
Govt. School For Disabled	0 (0)	60 (100)	0 (0)	0 (0)	59 (99)
Private School For Disabled	0 (0)	60 (100)	0 (0)	0 (0)	1 (1)
Government Others	0 (0)	60 (100)	0 (0)	0 (0)	0 (0)
Private Others	0 (0)	60 (100)	0 (0)	0 (0)	60 (100)

Note : Distance A : Less than 5 km; B : Between 5-10 km; C : 10+ km.; Source : Data Analysis is based on 2011 Census.

## DISCLAIMER

The Terms of Use and Disclaimer of Datanet India Private Limited (hereinafter referred to as "Datanet") for use of this analysis report of **Mansa Assembly Constituency (Mansa Vidhan Sabha)** :-

1. **Assembly Factbook™** is a Registered Trade Mark owned by Datanet.
2. All the maps are sketched and graphical representation only and have not been drawn to the scale and also not to represent the actual geographical area or boundary of the unit.
3. The data for the aforesaid analysis is based on authentic sources and has been culled from the various publications of Census, CSO and NSSO for district and block level data, various central and state government departments, Central & State Elections Commissions and the concerned Returning Officers' releases, Electoral Rolls, Election results and allied publications, internal assessment, surveys, estimates and analysis. Therefore, certain adjustment of data at micro level may have been done to arrive closer to the macro data.
4. Data have been provided on an "As Is" and "As AVAILABLE" basis
5. The colours shown in the maps or diagram and charts of a particular party, alliance or AC are indicative and do not represent them.
6. This publication which includes maps, sheets, graphs and data would be the property under copyright of Datanet only. The user may use these for its internal study, analysis and research purposes. It's public display, re-selling or any commercial uses by the user are not allowed.
7. Datanet has taken due care and caution in compilation and processing of data and allied information, but does not guarantee the accuracy, adequacy or completeness of any information/analysis and will be not responsible for any errors or omissions or for the results obtained from the use of such information/analysis.
8. All the contents for the publication have been culled from various authentic sources and Datanet reasonably believes such sources to be reliable, but does not make any representations, express or implied as to the accuracy or fitness of use of such information. The information or contents of the information/analysis do not constitute advice and should not be relied upon in making (or refraining from making) any decision. Any reliance placed upon the information provided by Datanet is the sole responsibility and strictly at the user's risk.
9. In no event will Datanet be liable for any damages (including, without limitation, damages for loss of business projects, or loss of profits) arising in contract, tort or otherwise from the use of or inability to use any of its contents, or from any action taken (or refrained from being taken) as a result of using the analysis or any of its contents. Datanet its directors, owners, editors, officials, employees, distributor and agents or any associate will not be liable for any errors in the information contained or any consequences arising from the use of the contents of the provided information/analysis.
10. If any provision of these terms and conditions is held invalid or illegal or unenforceable for any reason by any court of competent jurisdiction, such provision shall be severed and the remainder of provisions of the terms and conditions shall continue in full force and effect as if the Term of Use had been executed with the invalid, illegal or unenforceable provision eliminated.
11. If there are any discrepancies in the information provided, please bring it to attention of Datanet for suitable rectification measures.

**Buy Online This Complete Book At  
Datanet India eBooks Store**

**[www.indiastatpublications.com](http://www.indiastatpublications.com)**

**or go directly at**

**[http://www.indiastatpublications.com/  
Assembly\\_factbook/Punjab/Bathinda/ Mansa](http://www.indiastatpublications.com/Assembly_factbook/Punjab/Bathinda/Mansa)**





**i** indiastat**elections**

ISBN : 978-93-5822-557-0



9 789358 225570