



Punjab

Assembly Factbook™

Payal Assembly Constituency



Key Electoral Data of Payal
Assembly Constituency (Vidhan Sabha)

Punjab

Assembly Factbook™

Payal Assembly Constituency



Payal Vidhan Sabha

Editor & Director

Dr. R.K. Thukral

Research Editor

Dr. Shafeeq Rahman

Compiled, Researched and Published by Datanet India Pvt. Ltd.

D-100, 1st Floor,

Okhla Industrial Area, Phase-I,

New Delhi- 110020.

Ph.: 91-11- 43580781-84

Email : support@indiastatpublications.com

Website : www.indiastatelections.com

Online Book Store :

www.indiastatpublications.com

Report No. : AFB/PB-067-0125

ISBN : 978-93-5822-536-5

First Edition : January, 2018

Eighth Updated Edition : January, 2025

Price : Rs.11500/-

US\$ 310

© **Datanet India Pvt. Ltd.**

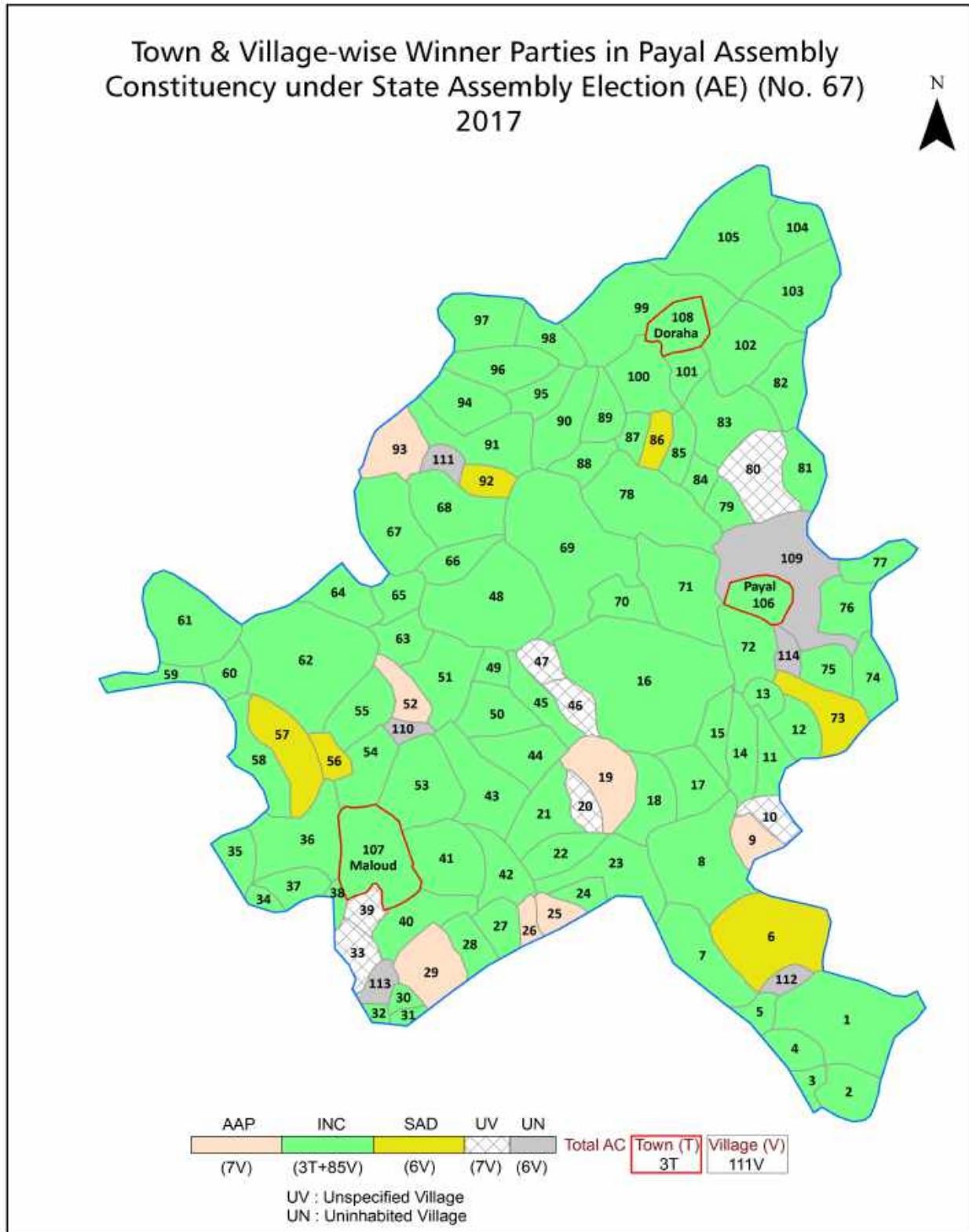
All rights reserved. No part of this book may be reproduced, stored in a retrieval system or transmitted in any form or by any means, mechanical photocopying, photographing, scanning, recording or otherwise without the prior written permission of the publisher. Please refer to Disclaimer at page no. 215 for the use of this publication.

Printed in India

Contents

No.	Particulars	Page No.
	Introduction	
1	Assembly Constituency - (Vidhan Sabha) at a Glance Features of Assembly as per Delimitation Commission of India (2008)	1-2
	Location and Political Maps	
2	Location Map Boundaries of Assembly Constituency - (Vidhan Sabha) in District Boundaries of Assembly Constituency under Parliamentary Constituency - (Lok Sabha) Town & Village-wise Winner Parties- 2024, 2022, 2019, 2017, 2014, 2012 and 2009	3-11
	Administrative Setup (2011)	
3	District Sub-district Towns Villages Inhabited Villages Uninhabited Villages Village Panchayat Intermediate Panchayat	12-18
	Demographics (2011)	
4	Population Households Rural/Urban Population Towns and Villages by Population Size Sex Ratio (Total & 0-6 Years) Religious Population Social Population Literacy Rate	19-20
	Electoral Features	
5	Important Dates of Last Elections Held Electors by Gender Service Electors Voters Voters Turnout Polling Stations & Average Number of Electors per Polling Station Electors by Age Group Present Elected Representatives	21-26
	Historical Summary Election Results	
6	Vote Share of Major Parties Winning Margin (Number & Percentage) Polarity of Parties Summary Result of Assembly Segment of Parliamentary Elections 2024, 2019, 2014, 2009, 2004 and 1999 Summary Result of Assembly Elections 2022, 2017, 2012, 2007, 2002, 1997, 1992, 1985, 1980, 1977, 1972, 1969, 1967 and 1962	27-49
	Polling Station Level Election Results	
7	Name and Number of Polling Station 2024, 2022, 2019, 2017, 2014, 2012 and 2009 Polling Station-wise Electors, Voters & Voters Turnout 2024, 2022, 2019, 2017, 2014, 2012 and 2009 Polling Station wise Elections Results 2024, 2022, 2019, 2017, 2014, 2012 and 2009	50-167
8	Panchayat Election Results Panchayat Result 2013	168-196
	Share of Assembly Constituency	
9	Share of Assembly Constituency - (Vidhan Sabha) in State, District and Parliamentary Constituency - (Lok Sabha)	197
	Socio-Economic Amenities (2011)	
10	Access to Administrative Units Agricultural, Manufacturing and Industrial Commodities Demographic Indicators Education Health & Manpower Drinking Water Supply Sanitation Entertainment and Recreations Infrastructure Power Food Allocation Distribution and Marketing of Agriculture Commodities Infrastructure Transport and Road Infrastructure Communication Banking and Financial Services Land Use Irrigation Source	199-213
11	Abbreviation & Sources	214
12	Disclaimer	215

Location & Political Map



Administrative Setup

List of Village Panchayat & Intermediate Panchayat (Block) Name- 2011

Village Name	Village Panchayat Name	Intermediate Panchayat Name
Afzullapur (230)	Afzullapur	Doraha
Ajnaud (221)	Ajnaud	Doraha
Alampur Urf Chapra (205)	Alampur Urf Chapra	Doraha
Aluna Miana (257)	Aluna Miana	Khanna
Aluna Pallah (258)	Aluna Pallah	Khanna
Aluna Tolla (256)	Aluna Tolla	Khanna
Babarpur (410)	Babarpur	Dehlon
Balaspur (216)	Balaspur	Doraha
Barmalipur (237)	Barmalipur	Doraha
Begowal (251)	Begowal	Doraha
Ber Kalan (398)	Ber Kalan	Dehlon
Ber Khurd (397)	Ber Khurd	Dehlon
Bharthala Randhawa (192)	Bharthala Randhawa	Khanna
Bhathal (227)	Bhathal	Doraha
Bhikhi Khutra (325)	Bhikhi Khutra	Dehlon
Bishanpura (238)	Bishanpura	Doraha
Bouiani (223)	Bouiani	Doraha
Burkara (417)	Burkara	Dehlon
Chan Koian Khurd (240)	Chan Koian Khurd	Doraha
Chankoian Kalan (241)	Chankoian Kalan	Doraha
Chapra (395)	Chapra	Doraha
Chima (254)	Chima	Khanna
Chomon (409)	Chomon	Dehlon
Daulatpur (413)	Daulatpur	Dehlon
Daumajra (253)	Daumajra	Khanna
Deep Nagar (242)	Deep Nagar	Doraha
Deva Khosa (259)	Deva Khosa	Khanna
Deva Mander (187)	Deva Mander	Khanna
Devinagar Urf Malakpur (193)	Devinagar Urf Cheema	Khanna

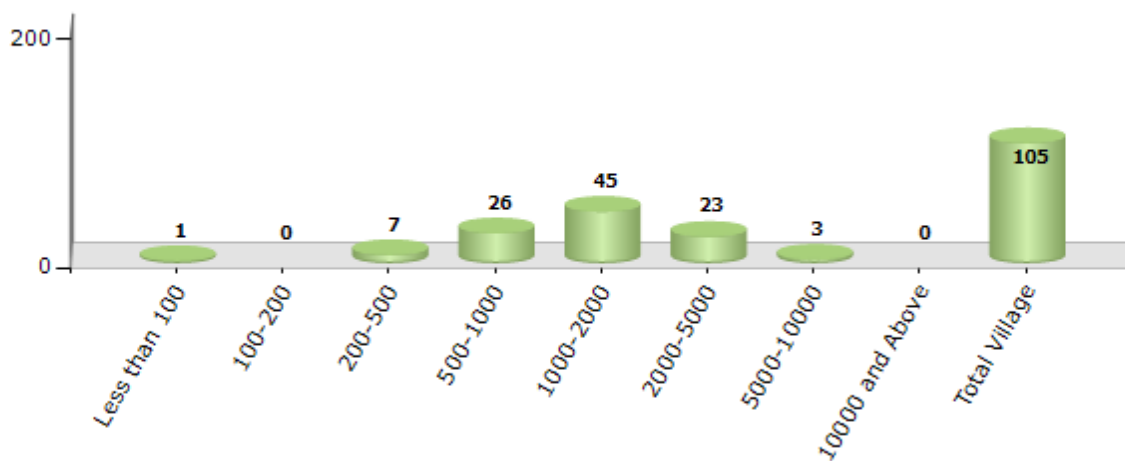
Contd....

Demographics

Number of Villages by Population Size - 2011

Less than 100	100-200	200-500	500-1000	1000-2000	2000-5000	5000-10000	10000 and Above	Total Village
1	0	7	26	45	23	3	0	105

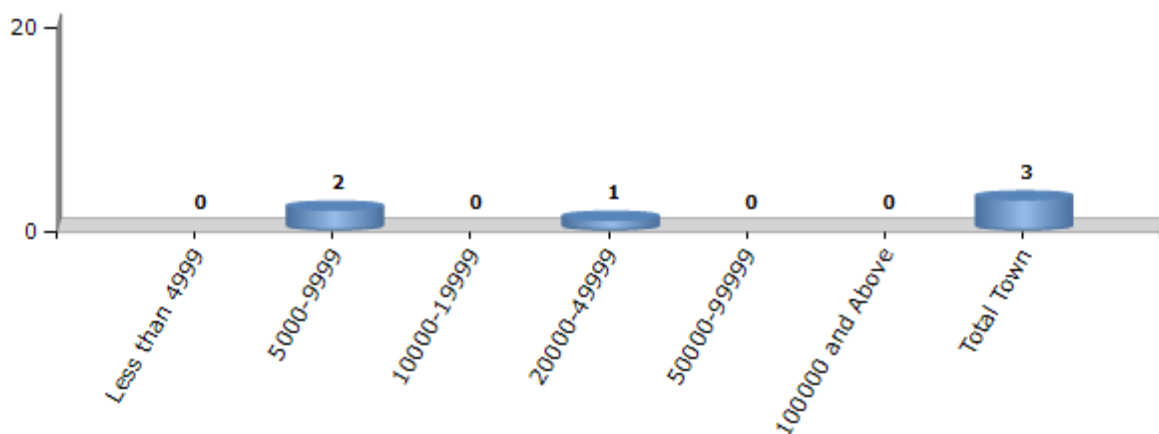
Number of Villages by Population Size - 2011



Number of Towns by Population Size - 2011

Less than 4999	5000-9999	10000-19999	20000-49999	50000-99999	100000 and Above	Total Town
0	2	0	1	0	0	3

Number of Towns by Population Size - 2011

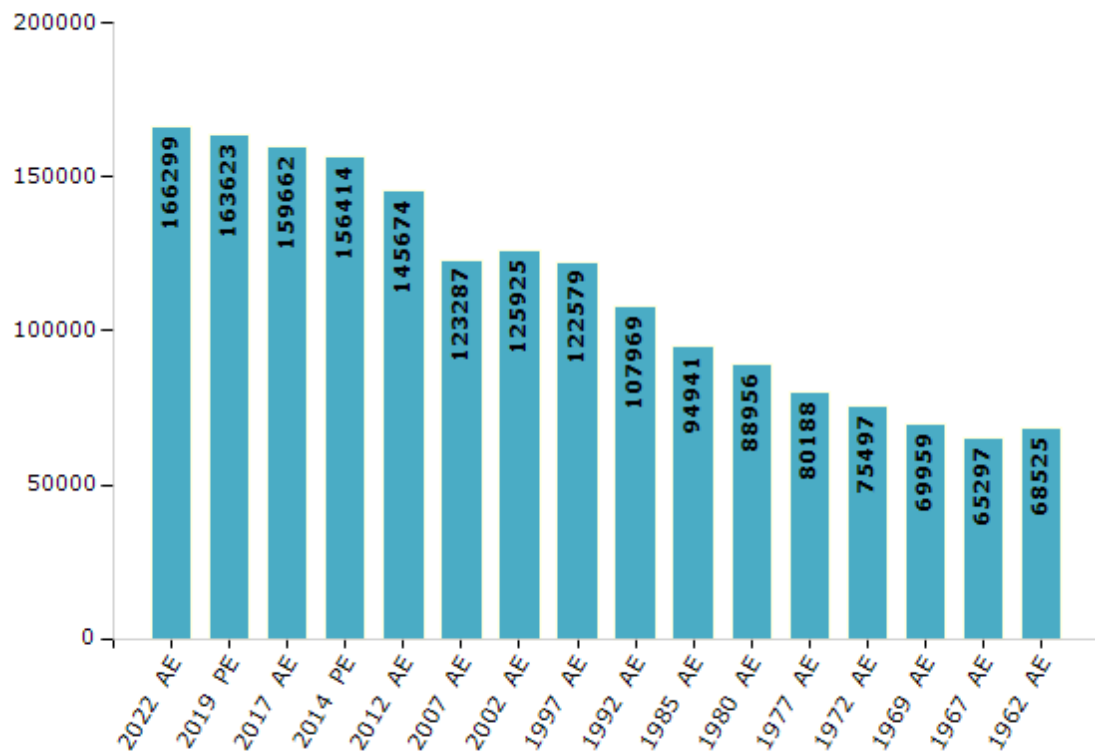


Electoral Features

Electors by Male & Female

Year	Male	Female	Others	Total	Year	Male	Female	Others	Total
2022 AE	88379	77917	3	166299	1992 AE	57958	50011	-	107969
2019 PE	87080	76540	3	163623	1985 AE	52479	42462	-	94941
2017 AE	85261	74397	4	159662	1980 AE	49235	39721	-	88956
2014 PE	83147	73265	2	156414	1977 AE	44110	36078	-	80188
2012 AE	77674	68000	0	145674	1972 AE	41713	33784	-	75497
2009 PE	-	-	-	-	1969 AE	38863	31096	-	69959
2007 AE	64069	59218	-	123287	1967 AE	-	-	-	65297
2004 PE	-	-	-	-	1962 AE	-	-	-	68525
2002 AE	65420	60505	-	125925	1957 AE	-	-	-	-
1999 PE	-	-	-	-	1952 AE	-	-	-	-
1997 AE	62528	60051	-	122579					

Number of Electors



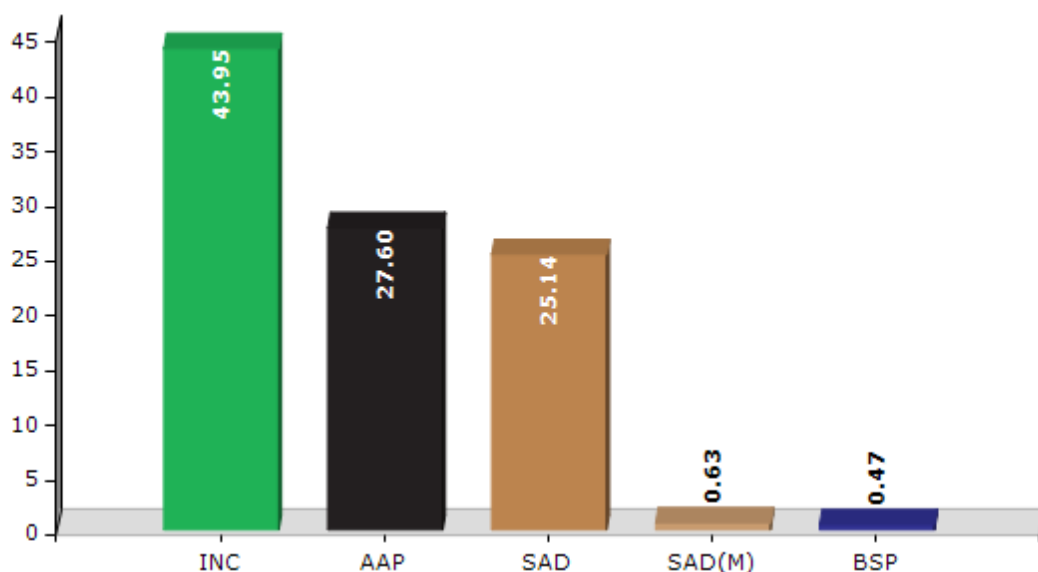
Note : AE : Assembly Election, PE : Assembly Segment of Parliamentary Election

Historical Summary Election Results

Summary Result of Assembly Election - 2017

Candidate Name	Party	Votes	Votes %
Lakhvir Singh Lakha	INC	57776	43.95
Gurpreet Singh Lapran	AAP	36280	27.6
Isher Singh Meharban	SAD	33044	25.14
Gurvinder Singh	SAD(M)	831	0.63
Dalbara Singh	BSP	618	0.47
Advocate Inderjit Singh	DEMSWP	402	0.31
Karan Kangra	IND	363	0.28
Captain Rampal Singh	APPA	347	0.26
Sandeep Singh	AITC	328	0.25
Jagtar Singh	IND	227	0.17
Samser Singh	IND	186	0.14
Kulwant Singh Cheema	NCP	186	0.14
Prem Singh	IND	156	0.12
	NOTA	702	0.53

Votes Percentage of Top Parties - 2017



Polling Station Level Election Results

Number and Name of Polling Stations (PS) (2022)

Number of Polling Stations	Name of Polling Stations	Number of Polling Stations	Name of Polling Stations
1	Govt. Primary School, Rampur	22	Dashmesh Model Sr. Sec. School, Doraha
2	Govt. Senior Secondary School, Rampur	23	Dashmesh Model Sr. Sec. School, Doraha
3	Govt. Senior Secondary School, Rampur	24	Dashmesh Model Sr. Sec. School, Doraha
4	Govt. Senior Secondary School, Rampur	25	Govt Elementary School, Doraha
5	Govt Primary School, Rampur	26	Govt Elementary School, Doraha
6	Govt Primary School, Rampur	27	Govt Elementary School, Doraha
7	Govt Elimentary School, Katana Sahib	28	Govt Elementary School, Mashal Nagar, Doraha
8	Govt. High School, Begowal	29	Govt Elementary School, Mashal Nagar, Doraha
9	Govt. High School, Begowal	30	Govt Elementary School, Mashal Nagar, Doraha
10	Govt. Primary School, Bogewal	31	Govt. Primary School, Rajgarh
11	Hindi Arya Putri Pathshala, Doraha	32	Govt. Primary School, Rajgarh
12	Hindi Arya Putri Pathshala, Doraha	33	Govt. High School, Rajgarh
13	Hindi Arya Putri Pathshala, Doraha	34	Govt. High School, Rajgarh
14	Municipal Primary School, Doraha	35	Govt. Elementary School, Ajnoud
15	Municipal Primary School, Doraha	36	Govt. Elementary School, Dugri
16	Govt Sr. Sec. School, Doraha	37	Govt. Elementary School, Daburji
17	Govt Sr. Sec. School, Doraha	38	Govt. Middel School, Gidri
18	Govt Sr. Sec. School, Doraha	39	Govt. Elementary School, Roul
19	Govt Sr. Sec. School, Doraha	40	Govt. High School, Buani
20	Khalsa Girls High School, Doraha	41	Govt. High School, Buani
21	Khalsa Girls High School, Doraha	42	Govt. Elementary School, Bhathal

Contd....

Polling Station Level Election Results

Polling Station-wise Votes Secured by Overall Top Five Parties in Payal Assembly in Assembly Election (AE) under Fatehgarh Sahib Parliamentary Constituency in Punjab (2022)

Number of Polling Station	Winner - Manwinder Singh Giaspura (AAP)	Runner-up - Lakhvir Singh (INC)	3rd - Doctor Jaspreet Singh Bija (BSP)	4th - Rampal Singh Daulatpur (SAD(M))	5th - Simardeep Singh Doburji (IND)	NOTA	Other	Total Votes Secured
36	357	161	35	29	12	2	14	610
37	266	209	120	69	157	0	27	848
38	469	193	126	43	7	4	19	861
39	267	139	74	36	4	2	30	552
40	497	167	82	57	11	10	23	847
41	249	105	44	34	8	1	25	466
42	129	141	122	34	3	0	11	440
43	327	261	64	78	19	3	20	772
44	365	215	143	14	3	0	40	780
45	496	165	64	36	7	10	25	803
46	402	126	85	26	2	3	18	662
47	297	104	76	15	7	4	27	530
48	318	178	92	13	8	3	27	639
49	234	86	46	26	3	3	5	403
50	332	81	94	23	6	2	10	548
51	337	70	50	20	2	9	18	506
52	284	149	73	33	5	3	13	560
53	313	75	72	12	6	1	16	495
54	317	191	133	20	53	6	17	737
55	154	115	133	12	4	0	11	429
56	292	117	84	18	3	2	12	528
57	347	69	132	39	0	4	17	608
58	270	60	86	24	0	5	18	463
59	321	68	59	41	1	1	18	509
60	331	53	88	29	2	3	12	518
61	350	269	191	12	8	0	15	845
62	79	127	3	5	2	0	1	217
63	306	178	228	59	2	2	22	797
64	229	226	171	26	2	3	24	681
65	249	139	118	30	5	0	76	617
66	256	195	77	39	2	1	31	601
67	304	180	147	15	3	0	32	681
68	254	254	133	19	1	5	34	700
69	279	188	133	11	4	2	22	639
70	176	273	157	2	3	3	20	634

Contd....

Polling Station Level Election Results

Winner, Runner-up and 3rd Party Position & Winning Margin According to Polling Stations in Payal Assembly in Assembly Election (AE) under Fatehgarh Sahib Parliamentary Constituency in Punjab (2022)

Polling Station Number	Winner Party	Winner Votes (%)	Runner-up Party	Runner-up Votes (%)	Winning Margin Votes (%)	Third Party	Third Party Votes (%)	Other Votes (%)
71	AAP	236 (36.99)	INC	234 (36.68)	2 (0.31)	BSP	124 (19.44)	44 (6.9)
72	AAP	275 (35.17)	INC	236 (30.18)	39 (4.99)	BSP	191 (24.42)	80 (10.23)
73	BSP	295 (32)	INC	288 (31.24)	7 (0.76)	AAP	276 (29.93)	63 (6.83)
74	AAP	211 (38.57)	BSP	164 (29.98)	47 (8.59)	INC	115 (21.02)	57 (10.42)
75	AAP	282 (45.12)	BSP	164 (26.24)	118 (18.88)	INC	123 (19.68)	56 (8.96)
76	AAP	267 (51.45)	BSP	128 (24.66)	139 (26.79)	INC	62 (11.95)	62 (11.95)
77	AAP	279 (56.59)	INC	96 (19.47)	183 (37.12)	BSP	75 (15.21)	43 (8.72)
78	AAP	203 (38.59)	BSP	148 (28.14)	55 (10.45)	INC	127 (24.14)	48 (9.13)
79	AAP	231 (45.21)	INC	142 (27.79)	89 (17.42)	BSP	95 (18.59)	43 (8.41)
80	AAP	245 (37.93)	INC	200 (30.96)	45 (6.97)	BSP	146 (22.6)	55 (8.51)
81	AAP	226 (49.56)	INC	128 (28.07)	98 (21.49)	BSP	59 (12.94)	43 (9.43)
82	AAP	230 (46.18)	BSP	113 (22.69)	117 (23.49)	INC	97 (19.48)	58 (11.65)
83	AAP	335 (44.08)	INC	194 (25.53)	141 (18.55)	BSP	171 (22.5)	60 (7.89)
84	AAP	253 (51.32)	INC	112 (22.72)	141 (28.6)	BSP	75 (15.21)	53 (10.75)
85	AAP	273 (44.83)	INC	149 (24.47)	124 (20.36)	BSP	130 (21.35)	57 (9.36)
86	AAP	335 (62.85)	INC	80 (15.01)	255 (47.84)	BSP	76 (14.26)	42 (7.88)
87	AAP	270 (40.72)	INC	183 (27.6)	87 (13.12)	BSP	125 (18.85)	85 (12.82)
88	AAP	95 (42.6)	INC	68 (30.49)	27 (12.11)	BSP	48 (21.52)	12 (5.38)
89	AAP	366 (56.39)	INC	147 (22.65)	219 (33.74)	BSP	56 (8.63)	80 (12.33)
90	AAP	312 (56.01)	INC	116 (20.83)	196 (35.18)	BSP	55 (9.87)	74 (13.29)
91	AAP	228 (44.1)	INC	204 (39.46)	24 (4.64)	BSP	51 (9.86)	34 (6.58)
92	AAP	312 (49.52)	INC	169 (26.83)	143 (22.69)	BSP	98 (15.56)	51 (8.1)
93	AAP	342 (65.77)	INC	81 (15.58)	261 (50.19)	BSP	62 (11.92)	35 (6.73)
94	AAP	311 (57.06)	BSP	101 (18.53)	210 (38.53)	INC	75 (13.76)	58 (10.64)
95	AAP	327 (47.19)	BSP	190 (27.42)	137 (19.77)	INC	115 (16.59)	61 (8.8)
96	AAP	321 (51.44)	INC	235 (37.66)	86 (13.78)	SAD(M)	31 (4.97)	37 (5.93)
97	AAP	401 (52.49)	INC	247 (32.33)	154 (20.16)	BSP	43 (5.63)	73 (9.55)
98	AAP	310 (56.88)	INC	98 (17.98)	212 (38.9)	BSP	78 (14.31)	59 (10.83)
99	AAP	252 (53.85)	INC	103 (22.01)	149 (31.84)	BSP	87 (18.59)	26 (5.56)
100	AAP	274 (35.4)	INC	230 (29.72)	44 (5.68)	BSP	208 (26.87)	62 (8.01)
101	AAP	252 (45.99)	INC	209 (38.14)	43 (7.85)	BSP	52 (9.49)	35 (6.39)
102	AAP	208 (41.68)	INC	193 (38.68)	15 (3)	BSP	63 (12.63)	35 (7.01)
103	AAP	278 (50.36)	INC	160 (28.99)	118 (21.37)	BSP	59 (10.69)	55 (9.96)
104	AAP	231 (53.1)	INC	139 (31.95)	92 (21.15)	BSP	36 (8.28)	29 (6.67)
105	AAP	369 (46.13)	INC	270 (33.75)	99 (12.38)	BSP	85 (10.63)	76 (9.5)

Contd....

Socio-Economic Amenities - Rural

Access to Education Facilities

Particulars	Number of Villages (% of Population)				
	Available	Not Available	If Not Available (Distance of Nearest Facility)		
			A	B	C
Govt. Primary School	101 (99)	4 (1)	2 (1)	0 (0)	0 (0)
Private Primary School	24 (34)	81 (66)	1 (0)	0 (0)	0 (0)
Govt. Middle School	57 (71)	48 (29)	39 (24)	0 (0)	0 (0)
Private Middle School	16 (28)	89 (72)	6 (2)	0 (0)	0 (0)
Govt. Secondary School	26 (41)	79 (59)	53 (39)	10 (7)	0 (0)
Private Secondary School	10 (17)	95 (83)	9 (3)	1 (1)	0 (0)
Govt. Senior Secondary School	11 (23)	94 (77)	61 (54)	20 (14)	0 (0)
Private Senior Secondary School	5 (8)	100 (92)	7 (3)	3 (2)	0 (0)
Govt. Arts and Science Degree College	0 (0)	105 (100)	6 (6)	8 (6)	22 (24)
Private Arts and Science Degree College	1 (2)	104 (98)	13 (20)	27 (21)	28 (21)
Govt. Engineering College	0 (0)	105 (100)	2 (2)	3 (1)	36 (33)
Private Engineering College	0 (0)	105 (100)	3 (3)	9 (9)	52 (51)
Govt. Medicine College	0 (0)	105 (100)	0 (0)	0 (0)	3 (4)
Private Medicine College	0 (0)	105 (100)	0 (0)	0 (0)	102 (96)
Govt. Management Institute	0 (0)	105 (100)	0 (0)	0 (0)	12 (11)
Private Management Institute	0 (0)	105 (100)	2 (3)	6 (4)	85 (82)
Govt. Polytechnic	0 (0)	105 (100)	4 (7)	0 (0)	54 (50)
Private Polytechnic	0 (0)	105 (100)	2 (2)	5 (4)	39 (36)
Govt. Vocational Training School/ITI	0 (0)	105 (100)	2 (2)	3 (2)	78 (76)
Private Vocational Training School/ITI	0 (0)	105 (100)	0 (0)	0 (0)	22 (20)
Govt. Non Formal Training Centre	0 (0)	105 (100)	0 (0)	0 (0)	93 (88)
Private Non Formal Training Centre	0 (0)	105 (100)	0 (0)	1 (0)	11 (12)
Govt. School For Disabled	0 (0)	105 (100)	0 (0)	0 (0)	99 (93)
Private School For Disabled	0 (0)	105 (100)	0 (0)	0 (0)	6 (7)
Government Others	0 (0)	105 (100)	0 (0)	0 (0)	88 (85)
Private Others	0 (0)	105 (100)	0 (0)	0 (0)	17 (15)

Note : Distance A : Less than 5 km; B : Between 5-10 km; C : 10+ km.; Source : Data Analysis is based on 2011 Census.

DISCLAIMER

The Terms of Use and Disclaimer of Datanet India Private Limited (hereinafter referred to as "Datanet") for use of this analysis report of **Payal Assembly Constituency (Payal Vidhan Sabha)** :-

1. **Assembly Factbook™** is a Registered Trade Mark owned by Datanet.
2. All the maps are sketched and graphical representation only and have not been drawn to the scale and also not to represent the actual geographical area or boundary of the unit.
3. The data for the aforesaid analysis is based on authentic sources and has been culled from the various publications of Census, CSO and NSSO for district and block level data, various central and state government departments, Central & State Elections Commissions and the concerned Returning Officers' releases, Electoral Rolls, Election results and allied publications, internal assessment, surveys, estimates and analysis. Therefore, certain adjustment of data at micro level may have been done to arrive closer to the macro data.
4. Data have been provided on an "As Is" and "As AVAILABLE" basis
5. The colours shown in the maps or diagram and charts of a particular party, alliance or AC are indicative and do not represent them.
6. This publication which includes maps, sheets, graphs and data would be the property under copyright of Datanet only. The user may use these for its internal study, analysis and research purposes. It's public display, re-selling or any commercial uses by the user are not allowed.
7. Datanet has taken due care and caution in compilation and processing of data and allied information, but does not guarantee the accuracy, adequacy or completeness of any information/analysis and will be not responsible for any errors or omissions or for the results obtained from the use of such information/analysis.
8. All the contents for the publication have been culled from various authentic sources and Datanet reasonably believes such sources to be reliable, but does not make any representations, express or implied as to the accuracy or fitness of use of such information. The information or contents of the information/analysis do not constitute advice and should not be relied upon in making (or refraining from making) any decision. Any reliance placed upon the information provided by Datanet is the sole responsibility and strictly at the user's risk.
9. In no event will Datanet be liable for any damages (including, without limitation, damages for loss of business projects, or loss of profits) arising in contract, tort or otherwise from the use of or inability to use any of its contents, or from any action taken (or refrained from being taken) as a result of using the analysis or any of its contents. Datanet its directors, owners, editors, officials, employees, distributor and agents or any associate will not be liable for any errors in the information contained or any consequences arising from the use of the contents of the provided information/analysis.
10. If any provision of these terms and conditions is held invalid or illegal or unenforceable for any reason by any court of competent jurisdiction, such provision shall be severed and the remainder of provisions of the terms and conditions shall continue in full force and effect as if the Term of Use had been executed with the invalid, illegal or unenforceable provision eliminated.
11. If there are any discrepancies in the information provided, please bring it to attention of Datanet for suitable rectification measures.

Buy Online This Complete Book At
Datanet India eBooks Store

www.indiastatpublications.com

or go directly at

[http://www.indiastatpublications.com/
Assembly_factbook/Punjab/Fatehgarh_Sahib/ Payal](http://www.indiastatpublications.com/Assembly_factbook/Punjab/Fatehgarh_Sahib/Payal)

 **indiastat**elections

