



Punjab

# Assembly Factbook™

Urmar Assembly Constituency



Key Electoral Data of Urmar  
Assembly Constituency (Vidhan Sabha)

Punjab

# Assembly Factbook™

Urmar Assembly Constituency



Urmar Vidhan Sabha

## **Editor & Director**

Dr. R.K. Thukral

## **Research Editor**

Dr. Shafeeq Rahman

## **Compiled, Researched and Published by Datanet India Pvt. Ltd.**

D-100, 1st Floor,

Okhla Industrial Area, Phase-I,

New Delhi- 110020.

Ph.: 91-11- 43580781-84

Email : support@indiastatpublications.com

Website : www.indiastatelections.com

## **Online Book Store :**

www.indiastatpublications.com

**Report No. :** AFB/PB-041-0125

**ISBN :** 978-93-5822-541-9

**First Edition :** January, 2018

**Eighth Updated Edition :** January, 2025

**Price :** Rs.11500/-

US\$ 310

© **Datanet India Pvt. Ltd.**

All rights reserved. No part of this book may be reproduced, stored in a retrieval system or transmitted in any form or by any means, mechanical photocopying, photographing, scanning, recording or otherwise without the prior written permission of the publisher. Please refer to Disclaimer at page no. 224 for the use of this publication.

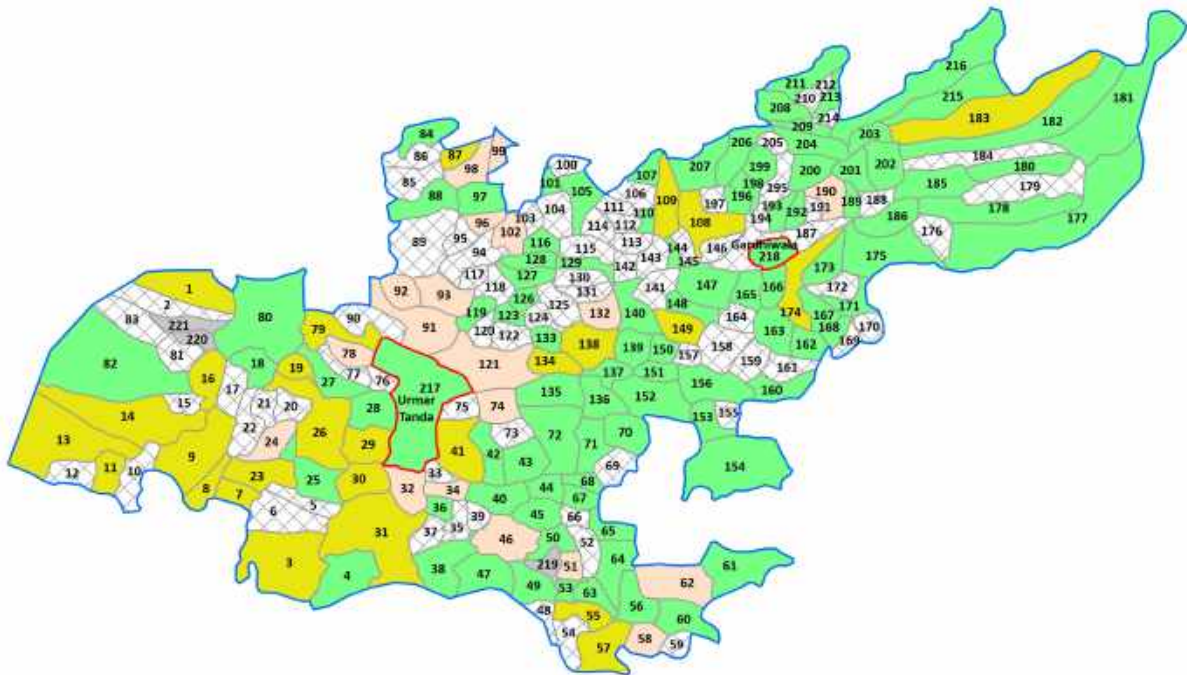
Printed in India

# Contents

No.	Particulars	Page No.
	<b>Introduction</b>	
1	Assembly Constituency - (Vidhan Sabha) at a Glance   Features of Assembly as per Delimitation Commission of India (2008)	1-2
	<b>Location and Political Maps</b>	
2	Location Map   Boundaries of Assembly Constituency - (Vidhan Sabha) in District   Boundaries of Assembly Constituency under Parliamentary Constituency - (Lok Sabha)   Town & Village-wise Winner Parties- 2024, 2022, 2017, 2014, 2012 and 2009	3-10
	<b>Administrative Setup (2011)</b>	
3	District   Sub-district   Towns   Villages   Inhabited Villages   Uninhabited Villages   Village Panchayat   Intermediate Panchayat	11-22
	<b>Demographics (2011)</b>	
4	Population   Households   Rural/Urban Population   Towns and Villages by Population Size   Sex Ratio (Total & 0-6 Years)   Religious Population   Social Population   Literacy Rate	23-24
	<b>Electoral Features</b>	
5	Important Dates of Last Elections Held   Electors by Gender   Service Electors   Voters   Voters Turnout   Polling Stations & Average Number of Electors per Polling Station   Electors by Age Group   Present Elected Representatives	25-30
	<b>Historical Summary Election Results</b>	
6	Vote Share of Major Parties   Winning Margin (Number & Percentage)   Polarity of Parties   Summary Result of Assembly Segment of Parliamentary Elections 2024, 2019, 2014 and 2009   Summary Result of Assembly Elections 2022, 2017 and 2012	31-40
	<b>Polling Station Level Election Results</b>	
7	Name and Number of Polling Station 2024, 2022, 2017, 2014, 2012 and 2009   Polling Station-wise Electors, Voters & Voters Turnout 2024, 2022, 2017, 2014, 2012 and 2009   Polling Station wise Elections Results 2024, 2022, 2017, 2014, 2012 and 2009	41-154
8	<b>Panchayat Election Results</b> Panchayat Result 2013	155-205
	<b>Share of Assembly Constituency</b>	
9	Share of Assembly Constituency - (Vidhan Sabha) in State, District and Parliamentary Constituency - (Lok Sabha)	206
	<b>Socio-Economic Amenities (2011)</b>	
10	Access to Administrative Units   Agricultural, Manufacturing and Industrial Commodities   Demographic Indicators   Education   Health & Manpower   Drinking Water Supply   Sanitation   Entertainment and Receptions Infrastructure   Power   Food Allocation Distribution and Marketing of Agriculture Commodities Infrastructure   Transport and Road Infrastructure   Communication   Banking and Financial Services   Land Use   Irrigation Source	208-222
11	<b>Abbreviation &amp; Sources</b>	223
12	<b>Disclaimer</b>	224

Location & Political Map

Town & Village-wise Winner Parties in Urmar Assembly Constituency under State Assembly Election (AE) (No. 41) 2017



AAP	INC	SAD	UV	UN	Total AC	Town (T)	Village (V)
(19V)	(2T+94V)	(27V)	(76V)	(3V)	2T	219V	

UV : Unspecified Village  
UN : Uninhabited Village

## Administrative Setup

### List of Village Panchayat & Intermediate Panchayat (Block) Name- 2011

Village Name	Village Panchayat Name	Intermediate Panchayat Name
Alar Pind (34)	Alar-Pind	Bhunga
Ambala (Jattan) (32)	Ambala-(Jattan)	Bhunga
Argowal (10)	Argowal	Bhunga
Awan Ghore Shah (539)	Awan-Ghore-Shah	Tanda
Babak (10)	Babak	Tanda
Badala Pukhta (88)	Badala-Pukhta	Hoshiarpur-I
Badial (11)	Badial	Bhunga
Bagha (39)	Bagha	Bhunga
Baghiari (7)	Baghiari	Tanda
Bagol Kalan (66)	Bagol-Kalan	Tanda
Bagol Khurd (67)	Bagol-Khurd	Tanda
Bahadurpur (548)	Bahadurpur	Tanda
Bahla (47)	Bahla	Bhunga
Bahtiwala (448)	Bahtiwala	Bhunga
Baich (27)	Baich	Tanda
Balala (20)	Balala	Bhunga
Balla (526)	Balla	Tanda
Baranda (447)	Baranda	Bhunga
Barohi (463)	Barohi	Bhunga
Bassi Jajal Khan (26)	Bassi-Jajal-Khan	Tanda
Bhagaotipur (74)	Khuda	Tanda
Bhagian (34)	Bhagian	Tanda
Bhains Awan (535)	Bhains-Awan	Tanda
Bhambowal (445)	Bhambowal	Bhunga
Bhana (3)	Bhana	Bhunga
Bhanowal (451)	Bhanowal	Bhunga
Bhatalu (452)	Bhatalu	Bhunga
Bhatian (27)	Bhatian	Bhunga
Bhatoli (444)	Katohar	Bhunga

Contd....

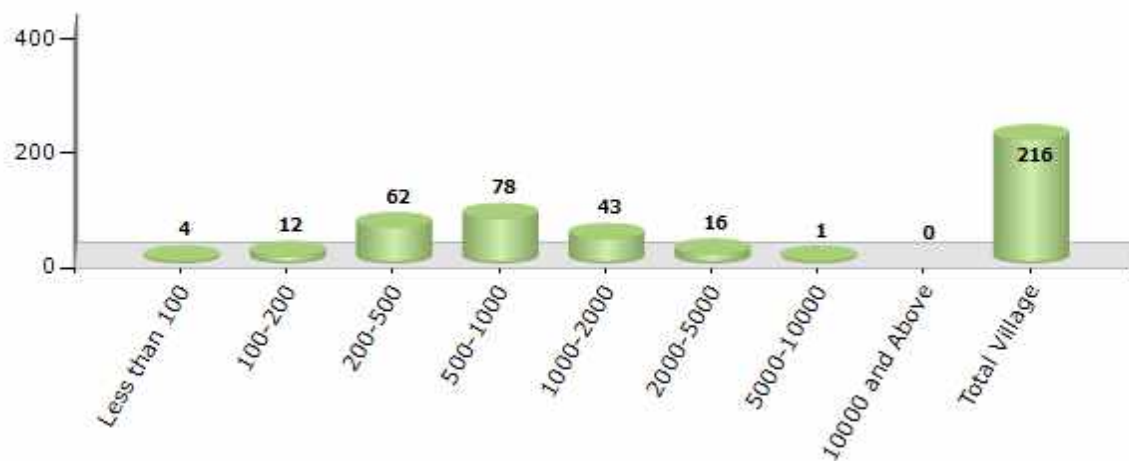


## Demographics

### Number of Villages by Population Size - 2011

Less than 100	100-200	200-500	500-1000	1000-2000	2000-5000	5000-10000	10000 and Above	Total Village
4	12	62	78	43	16	1	0	216

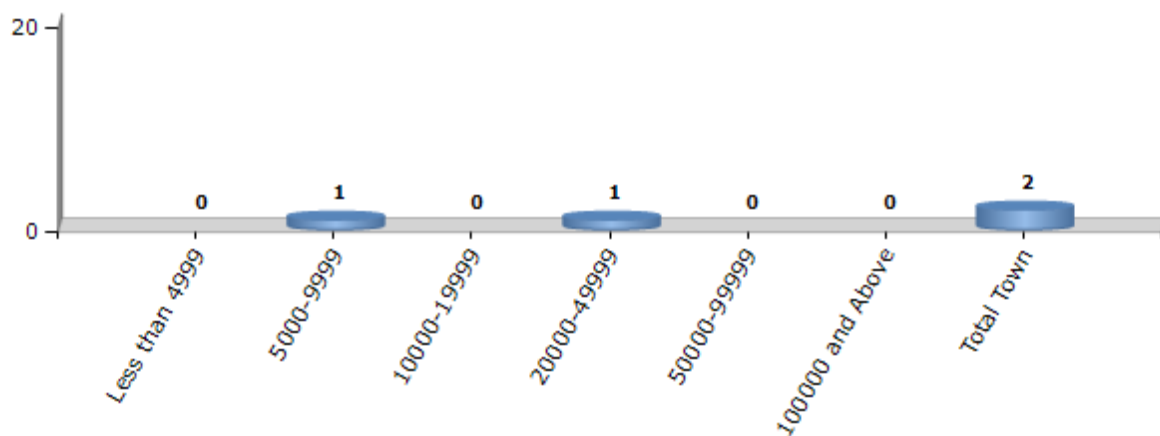
Number of Villages by Population Size - 2011



### Number of Towns by Population Size - 2011

Less than 4999	5000-9999	10000-19999	20000-49999	50000-99999	100000 and Above	Total Town
0	1	0	1	0	0	2

Number of Towns by Population Size - 2011

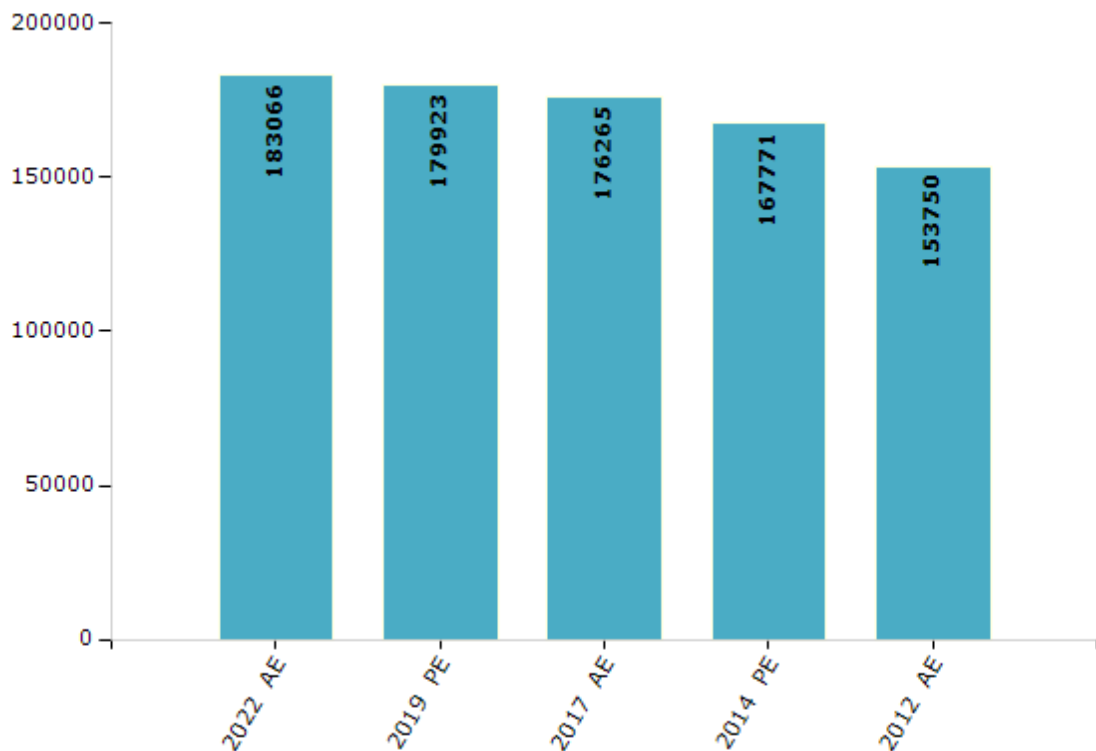


## Electoral Features

### Electors by Male & Female

Year	Male	Female	Others	Total	Year	Male	Female	Others	Total
2022 AE	93666	89393	7	183066	1992 AE	-	-	-	-
2019 PE	91837	88085	1	179923	1985 AE	-	-	-	-
2017 AE	89515	86750	0	176265	1980 AE	-	-	-	-
2014 PE	84651	83120	0	167771	1977 AE	-	-	-	-
2012 AE	77633	76117	0	153750	1972 AE	-	-	-	-
2009 PE	-	-	-	-	1969 AE	-	-	-	-
2007 AE	-	-	-	-	1967 AE	-	-	-	-
2004 PE	-	-	-	-	1962 AE	-	-	-	-
2002 AE	-	-	-	-	1957 AE	-	-	-	-
1999 PE	-	-	-	-	1952 AE	-	-	-	-
1997 AE	-	-	-	-					

Number of Electors



Note : AE : Assembly Election, PE : Assembly Segment of Parliamentary Election

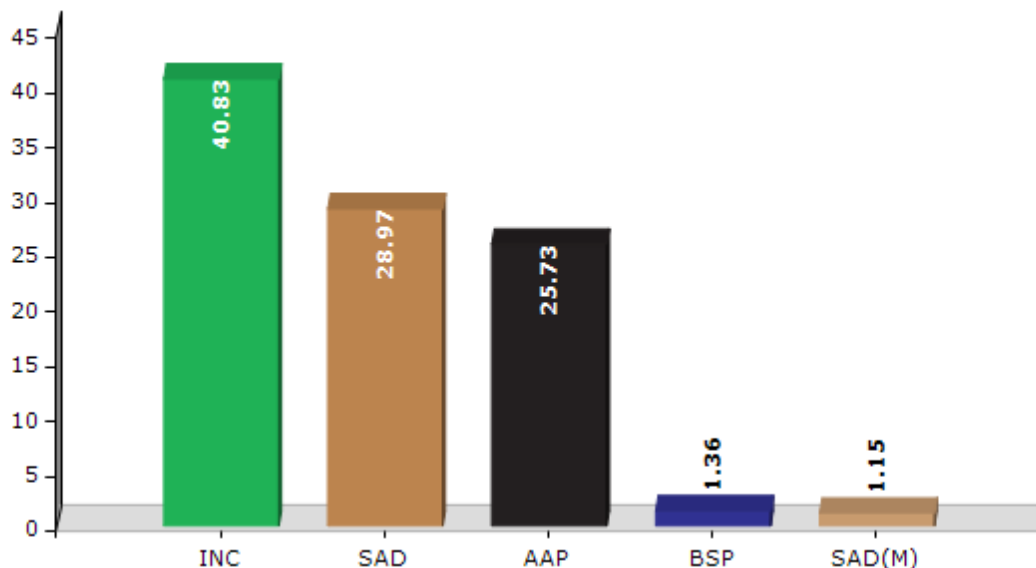


## Historical Summary Election Results

### Summary Result of Assembly Election - 2017

Candidate Name	Party	Votes	Votes %
Sangat Singh Gilzian	INC	51477	40.83
Arbinder Singh Rasulpur	SAD	36523	28.97
Jasvir Singh Gill (Raja)	AAP	32445	25.73
Gurbakhash Singh	BSP	1720	1.36
Kuldip Singh	SAD(M)	1454	1.15
Vikas Jasra	HSS	543	0.43
Virender Kumar	APPA	384	0.3
Gurdial Singh	BDPTY	348	0.28
Sugriv Singh	DPIN	341	0.27
	NOTA	840	0.67

Votes Percentage of Top Parties - 2017



## Polling Station Level Election Results

### Number and Name of Polling Stations (PS) (2022)

Number of Polling Stations	Name of Polling Stations	Number of Polling Stations	Name of Polling Stations
1	Govt.Ele.School, Koi	22	Govt. Elementary School Shekh
2	Govt.Ele.School, Baruhi	23	Govt. Ele. School, Pandori Attwal
3	Govt.Ele. School,Naroorh	24	Govt. Ele. School, Pandori Attwal
4	Govt.Elementary School,Khangwarhi	25	Govt. Ele. School,Sahijowal
5	Govt.Sr.Sec. School Manhota	26	Govt. Elementary School, Chak Noor Ali
6	Govt. Elementary School Thana	27	Govt. Ele. School, Khurd
7	Govt.Ele.School, Raghwal	28	Panchayat Ghar, Pakhowal
8	Govt.Ele.School,Ramtatwali	29	Govt. Ele.School,-Talwandi Jattan
9	Govt. Ele. School, Kakrali	30	Govt. Elementary School Machhian
10	Govt. Ele. School,Bhanowal	31	Govt. Ele.School-Bahla
11	Govt. Sen. Secondary School, Bhatlu	32	Govt.Ele School Sarhala
12	Govt. Elementary School Shienh Chathial	33	Govt. Ele. School, Goundpur
13	Govt. Ele. School, Chang Basua	34	Govt. Elementary School Rana
14	Govt. Ele. School, Litt	35	K.R.K.D.A.V. High School, Garhdiwala
15	Govt. Ele. School, Jujhar Chathiyal	36	K.R.K.D.A.V. High School, Garhdiwala
16	Govt Ele. School,Jamsher Chathiyal	37	K.R.K.D.A.V. High School, Garhdiwala
17	Govt.Elementary School,Barada	38	Khalsa Higher Secondary School.Garhdiwala
18	Govt.Ele.School,Fatehpur	39	Khalsa Higher Secondary School.Garhdiwala
19	Govt Ele. School, Malle Wal	40	Khalsa College, Garhdiwala
20	Govt Ele. School,Mirjapur	41	Khalsa College, Garhdiwala
21	Govt. Ele. School, Mastiwal	42	Govt. Ele. School, Kandhalian

Contd....

## Polling Station Level Election Results

### Polling Station-wise Votes Secured by Overall Top Five Parties in Urmar Assembly in Assembly Election (AE) under Hoshiarpur Parliamentary Constituency in Punjab (2022)

Number of Polling Station	Winner - Jasvir Singh Raja Gill (AAP)	Runner-up - Sangat Singh Gilzian (INC)	3rd - Lakhwinder Singh (BSP)	4th - Manjit Singh (SADS)	5th - Kuldip Singh (SAD(M))	NOTA	Other	Total Votes Secured
36	242	179	85	208	11	3	4	732
37	332	246	93	63	13	2	3	752
38	279	123	61	95	20	8	13	599
39	267	216	114	91	10	11	15	724
40	303	243	93	88	24	3	21	775
41	389	144	95	82	13	1	12	736
42	180	84	73	83	12	7	5	444
43	321	154	52	16	12	6	6	567
44	182	247	109	21	24	4	14	601
45	296	226	79	155	4	4	6	770
46	177	99	103	4	51	4	5	443
47	305	236	60	6	13	6	10	636
48	270	143	57	10	16	0	6	502
49	354	185	170	7	35	3	21	775
50	201	169	40	15	9	2	7	443
51	291	87	63	117	60	3	18	639
52	231	198	116	61	7	3	6	622
53	347	152	33	70	32	11	6	651
54	218	206	120	29	23	4	11	611
55	90	138	32	5	7	5	3	280
56	379	291	95	25	31	4	7	832
57	130	248	101	13	34	4	3	533
58	166	248	160	14	13	9	8	618
59	194	171	73	109	31	6	6	590
60	276	186	109	139	48	3	12	773
61	385	194	179	18	40	8	9	833
62	224	110	50	62	12	4	5	467
63	127	107	102	5	28	0	14	383
64	310	85	9	56	12	1	18	491
65	188	276	74	2	8	7	5	560
66	273	188	144	26	25	4	10	670
67	326	273	128	7	60	8	15	817
68	340	166	100	26	41	4	11	688
69	137	193	66	185	23	5	15	624
70	216	399	41	11	47	8	13	735

Contd....

## Polling Station Level Election Results

### Winner, Runner-up and 3rd Party Position & Winning Margin According to Polling Stations in Urmar Assembly in Assembly Election (AE) under Hoshiarpur Parliamentary Constituency in Punjab (2022)

Polling Station Number	Winner Party	Winner Votes (%)	Runner-up Party	Runner-up Votes (%)	Winning Margin Votes (%)	Third Party	Third Party Votes (%)	Other Votes (%)
71	AAP	319 (39.92)	INC	292 (36.55)	27 (3.37)	BSP	100 (12.52)	88 (11.01)
72	AAP	234 (49.58)	INC	156 (33.05)	78 (16.53)	BSP	57 (12.08)	25 (5.3)
73	AAP	139 (36.01)	INC	118 (30.57)	21 (5.44)	SADS	69 (17.88)	60 (15.54)
74	INC	221 (30.61)	BSP	167 (23.13)	54 (7.48)	AAP	144 (19.94)	190 (26.32)
75	INC	213 (47.02)	BSP	148 (32.67)	65 (14.35)	AAP	65 (14.35)	27 (5.96)
76	INC	170 (40.38)	AAP	145 (34.44)	25 (5.94)	SADS	43 (10.21)	63 (14.96)
77	AAP	195 (36.25)	BSP	141 (26.21)	54 (10.04)	SAD(M)	90 (16.73)	112 (20.82)
78	BSP	224 (36.19)	AAP	168 (27.14)	56 (9.05)	INC	147 (23.75)	80 (12.92)
79	AAP	265 (43.09)	INC	197 (32.03)	68 (11.06)	BSP	83 (13.5)	70 (11.38)
80	AAP	377 (58.09)	INC	173 (26.66)	204 (31.43)	BSP	41 (6.32)	58 (8.94)
81	AAP	188 (41.59)	INC	141 (31.19)	47 (10.4)	BSP	59 (13.05)	64 (14.16)
82	AAP	229 (40.75)	BSP	154 (27.4)	75 (13.35)	INC	100 (17.79)	79 (14.06)
83	AAP	305 (46)	INC	151 (22.78)	154 (23.22)	BSP	117 (17.65)	90 (13.57)
84	AAP	250 (47.62)	INC	125 (23.81)	125 (23.81)	BSP	92 (17.52)	58 (11.05)
85	AAP	299 (54.17)	INC	94 (17.03)	205 (37.14)	BSP	66 (11.96)	93 (16.85)
86	AAP	308 (57.14)	INC	112 (20.78)	196 (36.36)	BSP	55 (10.2)	64 (11.87)
87	AAP	338 (54.78)	INC	161 (26.09)	177 (28.69)	BSP	61 (9.89)	57 (9.24)
88	INC	223 (41.07)	BSP	190 (34.99)	33 (6.08)	AAP	99 (18.23)	31 (5.71)
89	INC	181 (48.27)	AAP	135 (36)	46 (12.27)	BDpty	20 (5.33)	39 (10.4)
90	BSP	124 (31.16)	INC	122 (30.65)	2 (0.51)	AAP	90 (22.61)	62 (15.58)
91	INC	203 (37.52)	AAP	189 (34.94)	14 (2.58)	BSP	114 (21.07)	35 (6.47)
92	INC	243 (39.38)	AAP	199 (32.25)	44 (7.13)	SADS	78 (12.64)	97 (15.72)
93	AAP	207 (52.01)	INC	94 (23.62)	113 (28.39)	BSP	42 (10.55)	55 (13.82)
94	INC	255 (51.31)	AAP	128 (25.75)	127 (25.56)	BSP	78 (15.69)	36 (7.24)
95	AAP	407 (76.5)	INC	72 (13.53)	335 (62.97)	BSP	19 (3.57)	34 (6.39)
96	AAP	340 (73.12)	INC	52 (11.18)	288 (61.94)	SAD(M)	38 (8.17)	35 (7.53)
97	AAP	137 (32.08)	SADS	105 (24.59)	32 (7.49)	INC	92 (21.55)	93 (21.78)
98	AAP	188 (44.87)	INC	102 (24.34)	86 (20.53)	BSP	77 (18.38)	52 (12.41)
99	AAP	285 (44.53)	INC	219 (34.22)	66 (10.31)	BSP	60 (9.38)	76 (11.88)
100	AAP	390 (60.75)	INC	102 (15.89)	288 (44.86)	SADS	60 (9.35)	90 (14.02)
101	AAP	226 (46.03)	INC	94 (19.14)	132 (26.89)	BSP	92 (18.74)	79 (16.09)
102	AAP	386 (50.33)	INC	187 (24.38)	199 (25.95)	BSP	80 (10.43)	114 (14.86)
103	AAP	201 (44.57)	INC	113 (25.06)	88 (19.51)	BSP	92 (20.4)	45 (9.98)
104	INC	255 (38.17)	AAP	230 (34.43)	25 (3.74)	BSP	119 (17.81)	64 (9.58)
105	INC	218 (41.21)	AAP	166 (31.38)	52 (9.83)	BSP	88 (16.64)	57 (10.78)

Contd....

## Socio-Economic Amenities - Rural

### Access to Education Facilities

Particulars	Number of Villages (% of Population)				
	Available	Not Available	If Not Available (Distance of Nearest Facility)		
			A	B	C
Govt. Primary School	180 (92)	36 (8)	30 (4)	0 (0)	0 (0)
Private Primary School	111 (63)	105 (37)	2 (0)	0 (0)	0 (0)
Govt. Middle School	72 (48)	144 (52)	138 (50)	3 (1)	0 (0)
Private Middle School	52 (36)	164 (64)	3 (1)	0 (0)	0 (0)
Govt. Secondary School	30 (25)	186 (75)	102 (44)	65 (23)	9 (3)
Private Secondary School	23 (15)	193 (85)	7 (4)	1 (0)	0 (0)
Govt. Senior Secondary School	20 (21)	196 (79)	78 (34)	73 (28)	39 (14)
Private Senior Secondary School	15 (10)	201 (90)	3 (2)	1 (0)	0 (0)
Govt. Arts and Science Degree College	0 (0)	216 (100)	15 (9)	54 (25)	145 (65)
Private Arts and Science Degree College	0 (0)	216 (100)	1 (0)	1 (0)	0 (0)
Govt. Engineering College	0 (0)	216 (100)	6 (2)	19 (11)	17 (8)
Private Engineering College	0 (0)	216 (100)	8 (5)	26 (12)	140 (61)
Govt. Medicine College	0 (0)	216 (100)	0 (0)	0 (0)	0 (0)
Private Medicine College	0 (0)	216 (100)	0 (0)	0 (0)	216 (100)
Govt. Management Institute	0 (0)	216 (100)	0 (0)	2 (0)	28 (16)
Private Management Institute	0 (0)	216 (100)	2 (1)	6 (2)	178 (81)
Govt. Polytechnic	0 (0)	216 (100)	8 (3)	19 (11)	181 (83)
Private Polytechnic	0 (0)	216 (100)	0 (0)	0 (0)	8 (4)
Govt. Vocational Training School/ITI	0 (0)	216 (100)	11 (5)	32 (18)	166 (74)
Private Vocational Training School/ITI	0 (0)	216 (100)	0 (0)	1 (0)	6 (4)
Govt. Non Formal Training Centre	0 (0)	216 (100)	9 (4)	33 (19)	167 (74)
Private Non Formal Training Centre	0 (0)	216 (100)	1 (0)	2 (1)	4 (3)
Govt. School For Disabled	0 (0)	216 (100)	11 (5)	30 (18)	170 (76)
Private School For Disabled	0 (0)	216 (100)	0 (0)	1 (0)	4 (1)
Government Others	0 (0)	216 (100)	3 (1)	3 (2)	13 (6)
Private Others	0 (0)	216 (100)	7 (3)	29 (16)	161 (71)

Note : Distance A : Less than 5 km; B : Between 5-10 km; C : 10+ km.; Source : Data Analysis is based on 2011 Census.

## DISCLAIMER

The Terms of Use and Disclaimer of Datanet India Private Limited (hereinafter referred to as "Datanet") for use of this analysis report of **Urmar Assembly Constituency (Urmar Vidhan Sabha) :-**

1. **Assembly Factbook™** is a Registered Trade Mark owned by Datanet.
2. All the maps are sketched and graphical representation only and have not been drawn to the scale and also not to represent the actual geographical area or boundary of the unit.
3. The data for the aforesaid analysis is based on authentic sources and has been culled from the various publications of Census, CSO and NSSO for district and block level data, various central and state government departments, Central & State Elections Commissions and the concerned Returning Officers' releases, Electoral Rolls, Election results and allied publications, internal assessment, surveys, estimates and analysis. Therefore, certain adjustment of data at micro level may have been done to arrive closer to the macro data.
4. Data have been provided on an "As Is" and "As AVAILABLE" basis
5. The colours shown in the maps or diagram and charts of a particular party, alliance or AC are indicative and do not represent them.
6. This publication which includes maps, sheets, graphs and data would be the property under copyright of Datanet only. The user may use these for its internal study, analysis and research purposes. It's public display, re-selling or any commercial uses by the user are not allowed.
7. Datanet has taken due care and caution in compilation and processing of data and allied information, but does not guarantee the accuracy, adequacy or completeness of any information/analysis and will be not responsible for any errors or omissions or for the results obtained from the use of such information/analysis.
8. All the contents for the publication have been culled from various authentic sources and Datanet reasonably believes such sources to be reliable, but does not make any representations, express or implied as to the accuracy or fitness of use of such information. The information or contents of the information/analysis do not constitute advice and should not be relied upon in making (or refraining from making) any decision. Any reliance placed upon the information provided by Datanet is the sole responsibility and strictly at the user's risk.
9. In no event will Datanet be liable for any damages (including, without limitation, damages for loss of business projects, or loss of profits) arising in contract, tort or otherwise from the use of or inability to use any of its contents, or from any action taken (or refrained from being taken) as a result of using the analysis or any of its contents. Datanet its directors, owners, editors, officials, employees, distributor and agents or any associate will not be liable for any errors in the information contained or any consequences arising from the use of the contents of the provided information/analysis.
10. If any provision of these terms and conditions is held invalid or illegal or unenforceable for any reason by any court of competent jurisdiction, such provision shall be severed and the remainder of provisions of the terms and conditions shall continue in full force and effect as if the Term of Use had been executed with the invalid, illegal or unenforceable provision eliminated.
11. If there are any discrepancies in the information provided, please bring it to attention of Datanet for suitable rectification measures.

Buy Online This Complete Book At  
**Datanet India eBooks Store**

[www.indiastatpublications.com](http://www.indiastatpublications.com)

or go directly at

[http://www.indiastatpublications.com/  
Assembly\\_factbook/Punjab/Hoshiarpur/Urmar](http://www.indiastatpublications.com/Assembly_factbook/Punjab/Hoshiarpur/Urmar)



 **indiastat**elections

ISBN : 978-93-5822-541-9



9 789358 225419