



Punjab

Assembly Factbook™

Baba Bakala Assembly Constituency



Key Electoral Data of Baba Bakala
Assembly Constituency (Vidhan Sabha)

Punjab

Assembly Factbook™

Baba Bakala Assembly Constituency



Baba Bakala Vidhan Sabha

Editor & Director

Dr. R.K. Thukral

Research Editor

Dr. Shafeeq Rahman

**Compiled, Researched and Published by
Datanet India Pvt. Ltd.**

D-100, 1st Floor,

Okhla Industrial Area, Phase-I,

New Delhi- 110020.

Ph.: 91-11- 43580781-84

Email : support@indiastatpublications.com

Website : www.indiastatelections.com

Online Book Store :

www.indiastatpublications.com

Report No. : AFB/PB-025-0125

ISBN : 978-93-5822-495-5

First Edition : January, 2018

Eighth Updated Edition : January, 2025

Price : Rs.11500/-

US\$ 310

© **Datanet India Pvt. Ltd.**

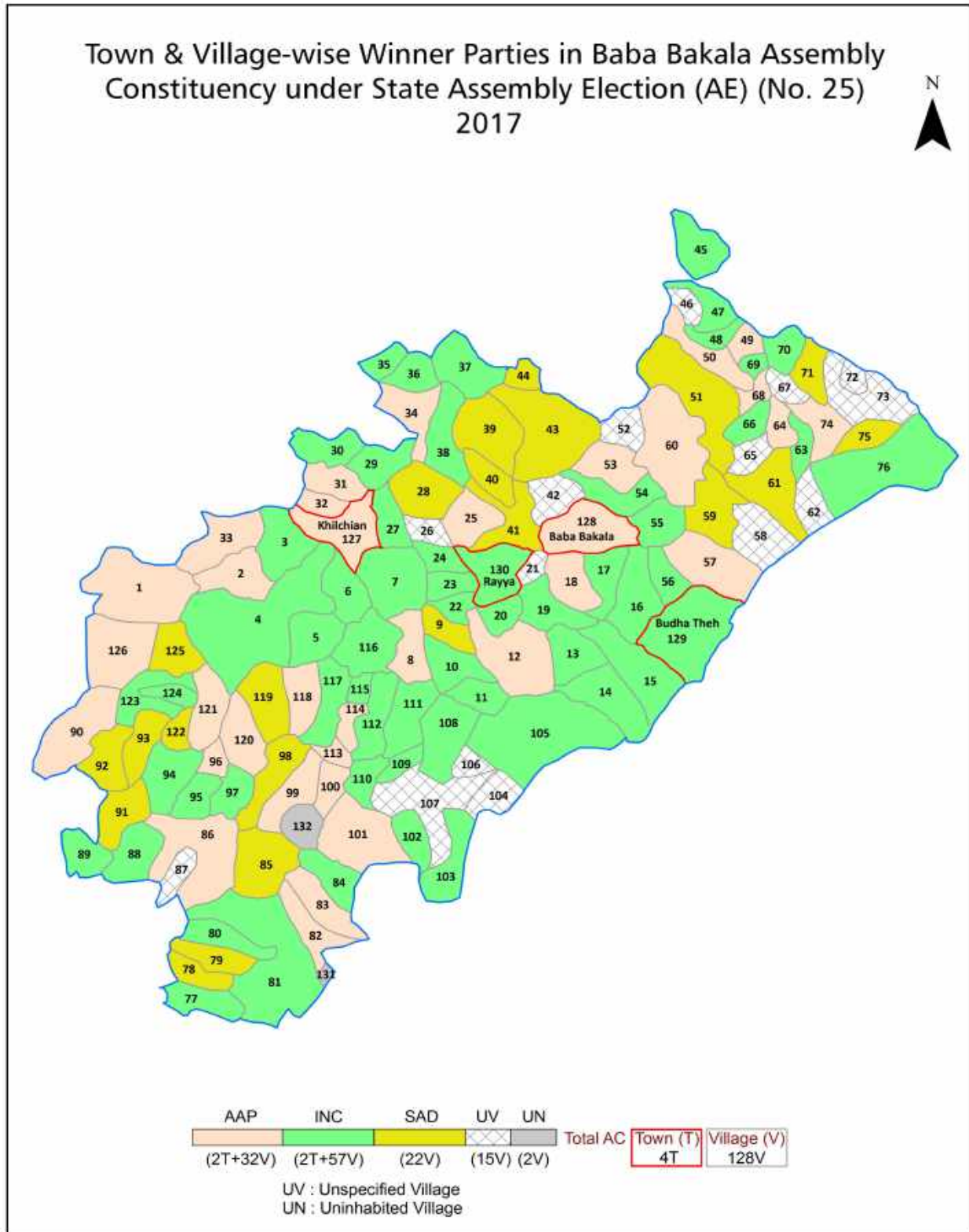
All rights reserved. No part of this book may be reproduced, stored in a retrieval system or transmitted in any form or by any means, mechanical photocopying, photographing, scanning, recording or otherwise without the prior written permission of the publisher. Please refer to Disclaimer at page no. 200 for the use of this publication.

Printed in India

Contents

No.	Particulars	Page No.
	Introduction	
1	Assembly Constituency - (Vidhan Sabha) at a Glance Features of Assembly as per Delimitation Commission of India (2008)	1-2
	Location and Political Maps	
2	Location Map Boundaries of Assembly Constituency - (Vidhan Sabha) in District Boundaries of Assembly Constituency under Parliamentary Constituency - (Lok Sabha) Town & Village-wise Winner Parties- 2024, 2022, 2017, 2014, 2012 and 2009	3-10
	Administrative Setup (2011)	
3	District Sub-district Towns Villages Inhabited Villages Uninhabited Villages Village Panchayat Intermediate Panchayat	11-18
	Demographics (2011)	
4	Population Households Rural/Urban Population Towns and Villages by Population Size Sex Ratio (Total & 0-6 Years) Religious Population Social Population Literacy Rate	19-20
	Electoral Features	
5	Important Dates of Last Elections Held Electors by Gender Service Electors Voters Voters Turnout Polling Stations & Average Number of Electors per Polling Station Electors by Age Group Present Elected Representatives	21-26
	Historical Summary Election Results	
6	Vote Share of Major Parties Winning Margin (Number & Percentage) Polarity of Parties Summary Result of Assembly Segment of Parliamentary Elections 2024, 2019, 2014 and 2009 Summary Result of Assembly Elections 2022, 2017 and 2012	27-36
	Polling Station Level Election Results	
7	Name and Number of Polling Station 2024, 2022, 2017, 2014, 2012 and 2009 Polling Station-wise Electors, Voters & Voters Turnout 2024, 2022, 2017, 2014, 2012 and 2009 Polling Station wise Elections Results 2024, 2022, 2017, 2014, 2012 and 2009	37-142
8	Panchayat Election Results Panchayat Result 2013	143-181
	Share of Assembly Constituency	
9	Share of Assembly Constituency - (Vidhan Sabha) in State, District and Parliamentary Constituency - (Lok Sabha)	182
	Socio-Economic Amenities (2011)	
10	Access to Administrative Units Agricultural, Manufacturing and Industrial Commodities Demographic Indicators Education Health & Manpower Drinking Water Supply Sanitation Entertainment and Recreations Infrastructure Power Food Allocation Distribution and Marketing of Agriculture Commodities Infrastructure Transport and Road Infrastructure Communication Banking and Financial Services Land Use Irrigation Source	184-198
11	Abbreviation & Sources	199
12	Disclaimer	200

Location & Political Map



Administrative Setup

List of Village Panchayat & Intermediate Panchayat (Block) Name- 2011

Village Name	Village Panchayat Name	Intermediate Panchayat Name
Aiampur (333)	Aiampur	Khadur Sahib
Alia (131)	Alia	Khadur Sahib
Allowal (137)	Allowal	Khadur Sahib
Aniatpur (160)	Aniatpur	Khadur Sahib
Bahadurpur (151)	Bahadurpur	Khadur Sahib
Balsarai (7)	Balsarai	Rayya
Banian (90)	Banian	Tarsika
Bedadpur (45)	Bedadpur	Rayya
Bhaini Badeshan (87)	Bhaini Badeshan	Jandiala Guru
Bhaini Ramdyal (48)	Bhaini Ramdyal	Rayya
Bhalaipur (72)	Bhalaipur	Rayya
Bhalaipur Dogra (159)	Bhalaipur Dogra	Khadur Sahib
Bhalojala (161)	Bhalojala	Khadur Sahib
Bhinder (17)	Bhinder	Rayya
Bhorchhi Rajputan (86)	Bhorchhi Rajputan	Rayya
Bhorchhi Brahmnan (85)	Bhorchhi Brahmnan	Rayya
Bhut Wind (140)	Bhut Wind	Khadur Sahib
Biharipur (334)	Biharipur	Khadur Sahib
Bodewal (148)	Bodewal	Khadur Sahib
Bule Nangal (11)	Bule Nangal	Rayya
Butala (52)	Butala	Rayya
Butari (82)	Butari	Rayya
Chak Gagrewal (156)	Chak Gagrewal	Khadur Sahib
Chak Kare Khan (135)	Chak Kare Khan	Khadur Sahib
Chak Thathian (44)	Sathiala	Rayya
Chhajjal Wadi (127)	Chhajjal Wadi	Jandiala Guru
Chhapianwali (32)	Chhapianwali	Rayya
Chimabath (21)	Chimabath	Rayya
Danial (38)	Danial	Rayya

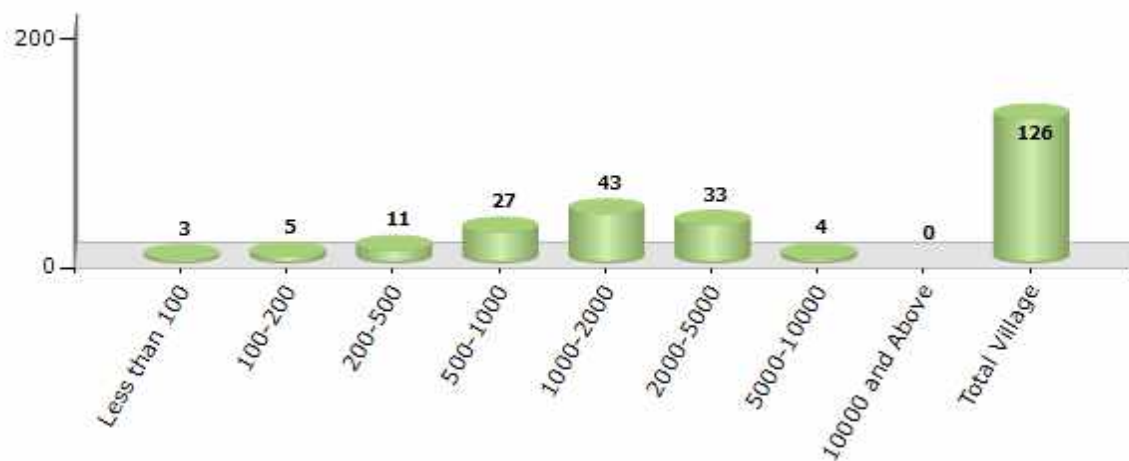
Contd....

Demographics

Number of Villages by Population Size - 2011

Less than 100	100-200	200-500	500-1000	1000-2000	2000-5000	5000-10000	10000 and Above	Total Village
3	5	11	27	43	33	4	0	126

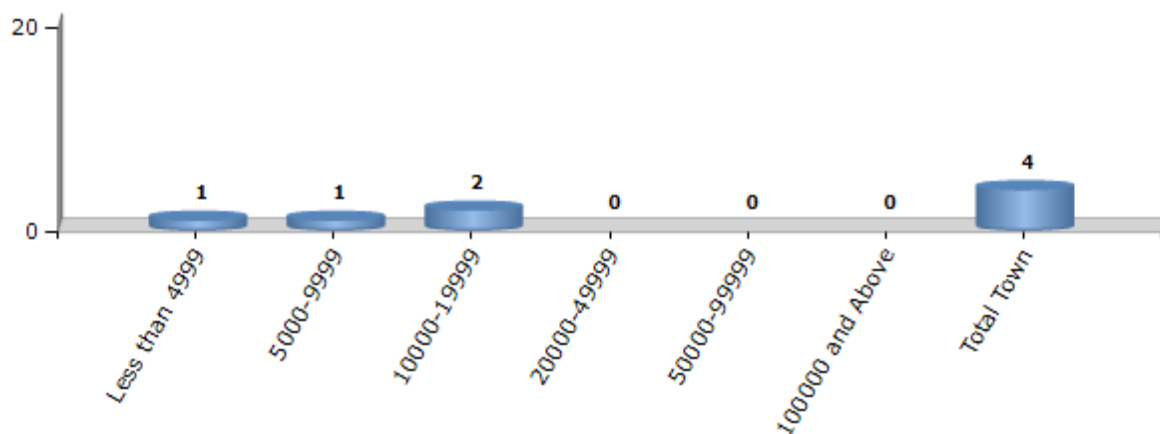
Number of Villages by Population Size - 2011



Number of Towns by Population Size - 2011

Less than 4999	5000-9999	10000-19999	20000-49999	50000-99999	100000 and Above	Total Town
1	1	2	0	0	0	4

Number of Towns by Population Size - 2011

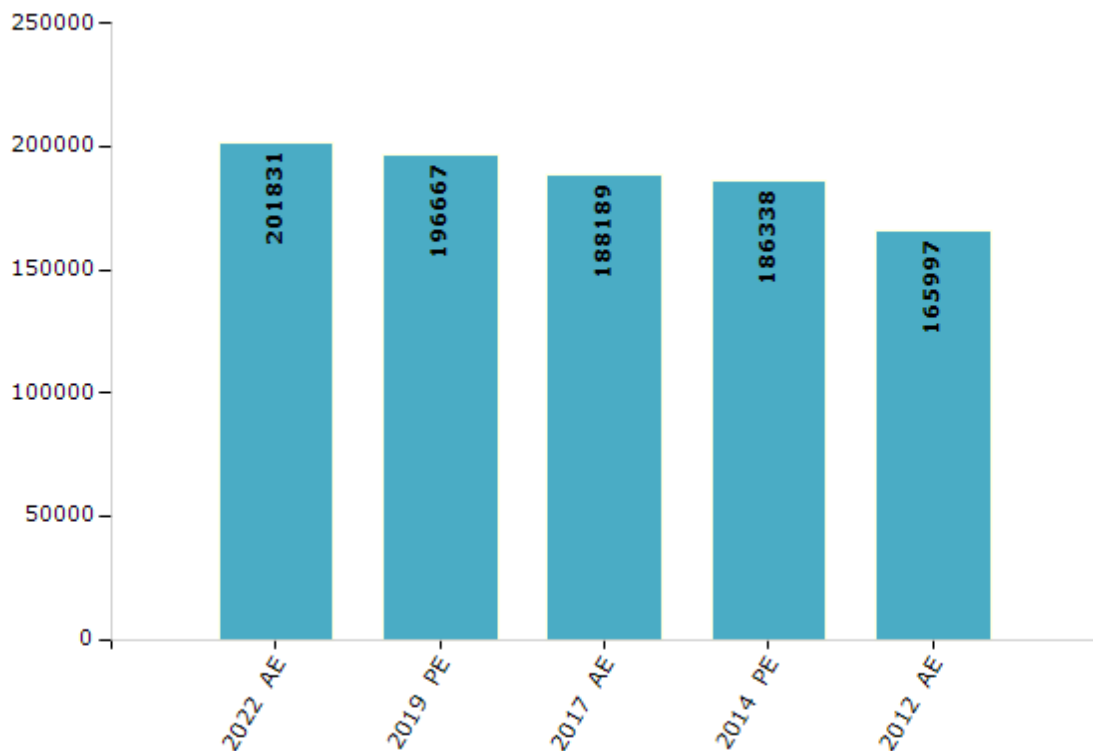


Electoral Features

Electors by Male & Female

Year	Male	Female	Others	Total	Year	Male	Female	Others	Total
2022 AE	105726	96091	14	201831	1992 AE	-	-	-	-
2019 PE	103238	93415	14	196667	1985 AE	-	-	-	-
2017 AE	99472	88705	12	188189	1980 AE	-	-	-	-
2014 PE	96958	89372	8	186338	1977 AE	-	-	-	-
2012 AE	86393	79602	2	165997	1972 AE	-	-	-	-
2009 PE	-	-	-	-	1969 AE	-	-	-	-
2007 AE	-	-	-	-	1967 AE	-	-	-	-
2004 PE	-	-	-	-	1962 AE	-	-	-	-
2002 AE	-	-	-	-	1957 AE	-	-	-	-
1999 PE	-	-	-	-	1952 AE	-	-	-	-
1997 AE	-	-	-	-					

Number of Electors



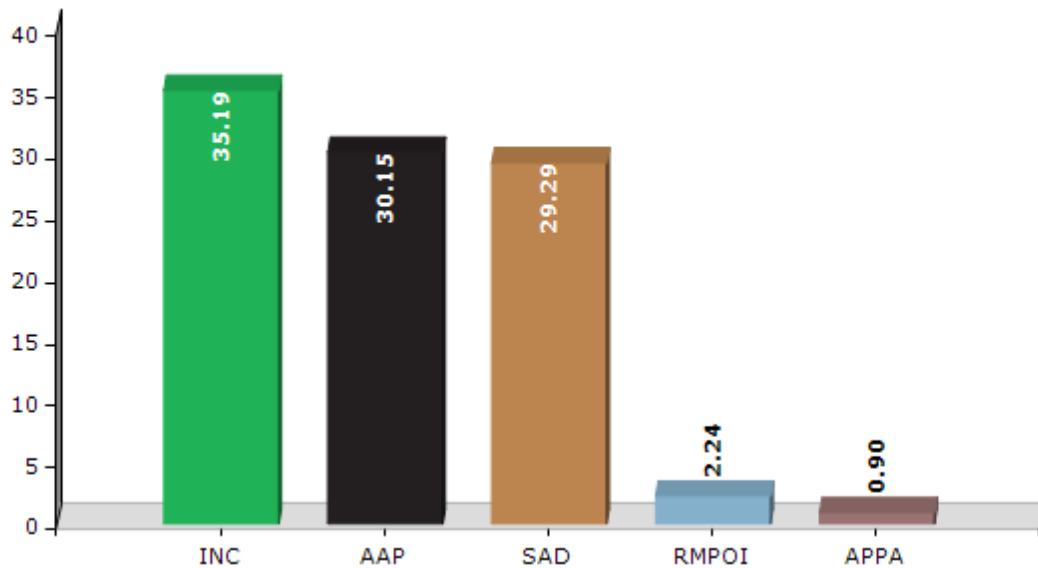
Note : AE : Assembly Election, PE : Assembly Segment of Parliamentary Election

Historical Summary Election Results

Summary Result of Assembly Election - 2017

Candidate Name	Party	Votes	Votes %
Santokh Singh	INC	45965	35.19
Dalbir Singh Tong	AAP	39378	30.15
Malkiat Singh	SAD	38265	29.29
Amrik Singh	RMPOI	2925	2.24
Baljit Singh Bhatti	APPA	1174	0.9
Kamaljit Singh	DEMSWP	1071	0.82
Swinder Singh	BSP	974	0.75
	NOTA	876	0.67

Votes Percentage of Top Parties - 2017



Polling Station Level Election Results

Number and Name of Polling Stations (PS) (2022)

Number of Polling Stations	Name of Polling Stations	Number of Polling Stations	Name of Polling Stations
1	Govt. Middle School Takapur	22	Government Secondary School,Butala (Boys)
2	Government Elementary School Tapiala	23	Government Secondary School,Butala (Boys)
3	Government Elementary School,Sattowal	24	Government Secondary School,Butala (Boys)
4	Government Middle School,,Jamalpur	25	Government Elementary School, Jhalari
5	Government Middle School,,Jamalpur	26	Government Elementary School, Jodhe
6	Government Elementary School,Kartarpur	27	Government Elementary School, Jodhe
7	Government High School,Khanpur	28	Government Elementary School, Jodhe
8	Government High School,Khanpur	29	Govt.Secondary School Balsarai
9	Government High School,Khanpur	30	Govt.Secondary School Balsarai
10	Govt. Elenentaary School, Shero Bagha	31	Govt.Secondary School Balsarai
11	Govt. Elenentaary School, Shero Bagha	32	Pathseekr Elementary School Bal Sarai Khurd
12	Government Elementary School,Seron Nigah	33	Pathseekr Elementary School Bal Sarai Khurd
13	Government Elementary School,Bhaini Ram Dyal	34	Pathseeker Sen.Secondry School Bal Sarai Khurd
14	Government Elementary School, Khera Thane Wal	35	Pathseeker Sen.Secondry School Bal Sarai Khurd
15	Government Elementary School,Rajpura	36	Government Elementary School, Warriach
16	Government Elementary School,Rajpura	37	Government Elementary School, Warriach
17	Government Elementary School,Narangpur	38	Government Secondary School, Sathiala (Boys)
18	Government Elementary School,Narangpur	39	Government Secondary School, Sathiala (Boys)
19	Government Elementary Shool, Kamoke	40	Government Secondary School, Sathiala (Boys)
20	Government Elementary Shool, Kamoke	41	Government High School(Girls),Sathiala
21	Govt. Ele. School Shahpur	42	Government High School(Girls),Sathiala

Contd....

Polling Station Level Election Results

Polling Station-wise Votes Secured by Overall Top Five Parties in Baba Bakala Assembly in Assembly Election (AE) under Khadoor Sahib Parliamentary Constituency in Punjab (2022)

Number of Polling Station	Winner - Dalbir Singh Tong (AAP)	Runner-up - Santokh Singh Bhalaipur (INC)	3rd - Baljit Singh Jalal Ushman (SAD)	4th - Manjit Singh Manna (BJP)	5th - Natha Singh (SAD(M))	NOTA	Other	Total Votes Secured
36	263	209	26	17	9	3	10	537
37	42	206	3	17	0	3	4	275
38	320	87	202	4	13	3	13	642
39	295	77	180	7	19	3	15	596
40	318	95	177	4	25	2	7	628
41	314	53	144	2	11	5	13	542
42	108	214	116	5	6	8	9	466
43	163	126	110	3	9	9	4	424
44	260	172	182	13	20	4	18	669
45	255	158	171	2	17	3	13	619
46	271	38	232	2	83	3	9	638
47	296	104	191	6	31	15	25	668
48	243	114	203	7	22	2	36	627
49	266	156	169	10	25	4	24	654
50	221	73	235	3	16	2	92	642
51	214	136	164	7	9	2	24	556
52	155	180	274	3	43	5	44	704
53	227	83	103	17	46	3	71	550
54	177	59	77	3	33	2	21	372
55	169	170	213	79	21	5	49	706
56	166	135	209	48	31	7	45	641
57	212	86	91	20	22	9	12	452
58	264	63	148	8	30	3	20	536
59	157	78	137	14	33	4	28	451
60	207	44	111	10	40	2	31	445
61	186	214	120	3	9	1	15	548
62	216	131	103	11	23	5	20	509
63	282	215	81	24	5	4	10	621
64	249	116	118	14	15	2	12	526
65	276	194	63	26	6	2	9	576
66	254	223	60	52	3	2	9	603
67	359	157	103	40	2	8	22	691
68	119	120	45	26	3	4	1	318
69	388	140	88	63	7	2	7	695
70	201	266	110	35	2	6	9	629

Contd....

Polling Station Level Election Results

Winner, Runner-up and 3rd Party Position & Winning Margin According to Polling Stations in Baba Bakala Assembly in Assembly Election (AE) under Khadoor Sahib Parliamentary Constituency in Punjab (2022)

Polling Station Number	Winner Party	Winner Votes (%)	Runner-up Party	Runner-up Votes (%)	Winning Margin Votes (%)	Third Party	Third Party Votes (%)	Other Votes (%)
71	AAP	17 (50)	INC	8 (23.53)	9 (26.47)	SAD	7 (20.59)	2 (5.88)
72	INC	327 (39.83)	AAP	214 (26.07)	113 (13.76)	SAD	212 (25.82)	68 (8.28)
73	INC	235 (34.71)	AAP	194 (28.66)	41 (6.05)	SAD	189 (27.92)	59 (8.71)
74	AAP	294 (42.3)	INC	197 (28.35)	97 (13.95)	SAD	143 (20.58)	61 (8.78)
75	AAP	297 (44.86)	INC	216 (32.63)	81 (12.23)	SAD	84 (12.69)	65 (9.82)
76	AAP	223 (47.05)	SAD	137 (28.9)	86 (18.15)	INC	81 (17.09)	33 (6.96)
77	INC	176 (30.66)	AAP	174 (30.31)	2 (0.35)	SAD	171 (29.79)	53 (9.23)
78	AAP	189 (45.22)	SAD	140 (33.49)	49 (11.73)	INC	51 (12.2)	38 (9.09)
79	AAP	352 (45.89)	INC	197 (25.68)	155 (20.21)	SAD	140 (18.25)	78 (10.17)
80	AAP	320 (44.32)	SAD	175 (24.24)	145 (20.08)	INC	106 (14.68)	121 (16.76)
81	AAP	234 (48.75)	INC	110 (22.92)	124 (25.83)	SAD	67 (13.96)	69 (14.38)
82	AAP	214 (34.97)	SAD	189 (30.88)	25 (4.09)	INC	141 (23.04)	68 (11.11)
83	AAP	213 (41.6)	SAD	143 (27.93)	70 (13.67)	INC	94 (18.36)	62 (12.11)
84	AAP	240 (47.34)	SAD	118 (23.27)	122 (24.07)	INC	105 (20.71)	44 (8.68)
85	AAP	413 (50.24)	SAD	177 (21.53)	236 (28.71)	INC	142 (17.27)	90 (10.95)
86	AAP	354 (45.97)	SAD	177 (22.99)	177 (22.98)	INC	171 (22.21)	68 (8.83)
87	SAD	224 (35.78)	AAP	180 (28.75)	44 (7.03)	INC	148 (23.64)	74 (11.82)
88	SAD	194 (39.51)	INC	143 (29.12)	51 (10.39)	AAP	115 (23.42)	39 (7.94)
89	INC	193 (34.4)	AAP	167 (29.77)	26 (4.63)	SAD	162 (28.88)	39 (6.95)
90	AAP	348 (44.56)	INC	217 (27.78)	131 (16.78)	SAD	159 (20.36)	57 (7.3)
91	AAP	430 (63.52)	INC	153 (22.6)	277 (40.92)	SAD	54 (7.98)	40 (5.91)
92	AAP	304 (51.35)	SAD	139 (23.48)	165 (27.87)	INC	127 (21.45)	22 (3.72)
93	AAP	436 (54.98)	SAD	167 (21.06)	269 (33.92)	INC	141 (17.78)	49 (6.18)
94	AAP	319 (53.89)	INC	120 (20.27)	199 (33.62)	SAD	95 (16.05)	58 (9.8)
95	AAP	334 (59.64)	INC	107 (19.11)	227 (40.53)	SAD	83 (14.82)	36 (6.43)
96	AAP	315 (54.31)	INC	101 (17.41)	214 (36.9)	SAD	95 (16.38)	69 (11.9)
97	AAP	344 (53.5)	INC	143 (22.24)	201 (31.26)	SAD	98 (15.24)	58 (9.02)
98	AAP	315 (52.33)	INC	169 (28.07)	146 (24.26)	SAD	74 (12.29)	44 (7.31)
99	AAP	294 (47.42)	INC	147 (23.71)	147 (23.71)	SAD	99 (15.97)	80 (12.9)
100	AAP	223 (45.33)	INC	107 (21.75)	116 (23.58)	SAD	76 (15.45)	86 (17.48)
101	AAP	281 (54.78)	INC	89 (17.35)	192 (37.43)	SAD	86 (16.76)	57 (11.11)
102	AAP	186 (56.71)	INC	63 (19.21)	123 (37.5)	SAD	38 (11.59)	41 (12.5)
103	AAP	284 (41.95)	SAD	166 (24.52)	118 (17.43)	INC	94 (13.88)	133 (19.65)
104	AAP	209 (38.14)	SAD	150 (27.37)	59 (10.77)	IND (GK)	81 (14.78)	108 (19.71)
105	INC	201 (35.64)	SAD	181 (32.09)	20 (3.55)	AAP	122 (21.63)	60 (10.64)

Contd....

Socio-Economic Amenities - Rural

Access to Education Facilities

Particulars	Number of Villages (% of Population)				
	Available	Not Available	If Not Available (Distance of Nearest Facility)		
			A	B	C
Govt. Primary School	114 (98)	12 (2)	8 (1)	0 (0)	0 (0)
Private Primary School	28 (35)	98 (65)	2 (0)	1 (0)	0 (0)
Govt. Middle School	58 (64)	68 (36)	54 (27)	2 (1)	0 (0)
Private Middle School	13 (18)	113 (82)	7 (2)	1 (1)	0 (0)
Govt. Secondary School	25 (41)	101 (59)	55 (29)	29 (18)	0 (0)
Private Secondary School	3 (7)	123 (93)	13 (11)	4 (2)	0 (0)
Govt. Senior Secondary School	8 (17)	118 (83)	54 (40)	51 (34)	6 (5)
Private Senior Secondary School	1 (1)	125 (99)	6 (4)	1 (1)	0 (0)
Govt. Arts and Science Degree College	1 (4)	125 (96)	7 (7)	31 (21)	5 (5)
Private Arts and Science Degree College	0 (0)	126 (100)	10 (6)	23 (15)	49 (41)
Govt. Engineering College	0 (0)	126 (100)	0 (0)	0 (0)	10 (8)
Private Engineering College	0 (0)	126 (100)	0 (0)	1 (0)	115 (92)
Govt. Medicine College	0 (0)	126 (100)	0 (0)	0 (0)	120 (94)
Private Medicine College	0 (0)	126 (100)	0 (0)	0 (0)	6 (6)
Govt. Management Institute	0 (0)	126 (100)	0 (0)	0 (0)	17 (14)
Private Management Institute	0 (0)	126 (100)	1 (0)	1 (0)	107 (86)
Govt. Polytechnic	0 (0)	126 (100)	0 (0)	3 (1)	71 (58)
Private Polytechnic	0 (0)	126 (100)	0 (0)	0 (0)	52 (41)
Govt. Vocational Training School/ITI	0 (0)	126 (100)	12 (11)	37 (29)	56 (44)
Private Vocational Training School/ITI	0 (0)	126 (100)	0 (0)	4 (3)	17 (13)
Govt. Non Formal Training Centre	0 (0)	126 (100)	0 (0)	4 (1)	54 (39)
Private Non Formal Training Centre	0 (0)	126 (100)	1 (1)	6 (4)	61 (55)
Govt. School For Disabled	0 (0)	126 (100)	0 (0)	1 (0)	85 (66)
Private School For Disabled	0 (0)	126 (100)	0 (0)	0 (0)	40 (34)
Government Others	0 (0)	126 (100)	0 (0)	0 (0)	10 (5)
Private Others	0 (0)	126 (100)	0 (0)	0 (0)	116 (95)

Note : Distance A : Less than 5 km; B : Between 5-10 km; C : 10+ km.; Source : Data Analysis is based on 2011 Census.

DISCLAIMER

The Terms of Use and Disclaimer of Datanet India Private Limited (hereinafter referred to as "Datanet") for use of this analysis report of **Baba Bakala Assembly Constituency (Baba Bakala Vidhan Sabha)** :-

1. **Assembly Factbook™** is a Registered Trade Mark owned by Datanet.
2. All the maps are sketched and graphical representation only and have not been drawn to the scale and also not to represent the actual geographical area or boundary of the unit.
3. The data for the aforesaid analysis is based on authentic sources and has been culled from the various publications of Census, CSO and NSSO for district and block level data, various central and state government departments, Central & State Elections Commissions and the concerned Returning Officers' releases, Electoral Rolls, Election results and allied publications, internal assessment, surveys, estimates and analysis. Therefore, certain adjustment of data at micro level may have been done to arrive closer to the macro data.
4. Data have been provided on an "As Is" and "As AVAILABLE" basis
5. The colours shown in the maps or diagram and charts of a particular party, alliance or AC are indicative and do not represent them.
6. This publication which includes maps, sheets, graphs and data would be the property under copyright of Datanet only. The user may use these for its internal study, analysis and research purposes. It's public display, re-selling or any commercial uses by the user are not allowed.
7. Datanet has taken due care and caution in compilation and processing of data and allied information, but does not guarantee the accuracy, adequacy or completeness of any information/analysis and will be not responsible for any errors or omissions or for the results obtained from the use of such information/analysis.
8. All the contents for the publication have been culled from various authentic sources and Datanet reasonably believes such sources to be reliable, but does not make any representations, express or implied as to the accuracy or fitness of use of such information. The information or contents of the information/analysis do not constitute advice and should not be relied upon in making (or refraining from making) any decision. Any reliance placed upon the information provided by Datanet is the sole responsibility and strictly at the user's risk.
9. In no event will Datanet be liable for any damages (including, without limitation, damages for loss of business projects, or loss of profits) arising in contract, tort or otherwise from the use of or inability to use any of its contents, or from any action taken (or refrained from being taken) as a result of using the analysis or any of its contents. Datanet its directors, owners, editors, officials, employees, distributor and agents or any associate will not be liable for any errors in the information contained or any consequences arising from the use of the contents of the provided information/analysis.
10. If any provision of these terms and conditions is held invalid or illegal or unenforceable for any reason by any court of competent jurisdiction, such provision shall be severed and the remainder of provisions of the terms and conditions shall continue in full force and effect as if the Term of Use had been executed with the invalid, illegal or unenforceable provision eliminated.
11. If there are any discrepancies in the information provided, please bring it to attention of Datanet for suitable rectification measures.

**Buy Online This Complete Book At
Datanet India eBooks Store**

www.indiastatpublications.com

or go directly at

[http://www.indiastatpublications.com/
Assembly_factbook/Punjab/Khadoor_Sahib/Baba_Bakala](http://www.indiastatpublications.com/Assembly_factbook/Punjab/Khadoor_Sahib/Baba_Bakala)

 **indiastat**elections

