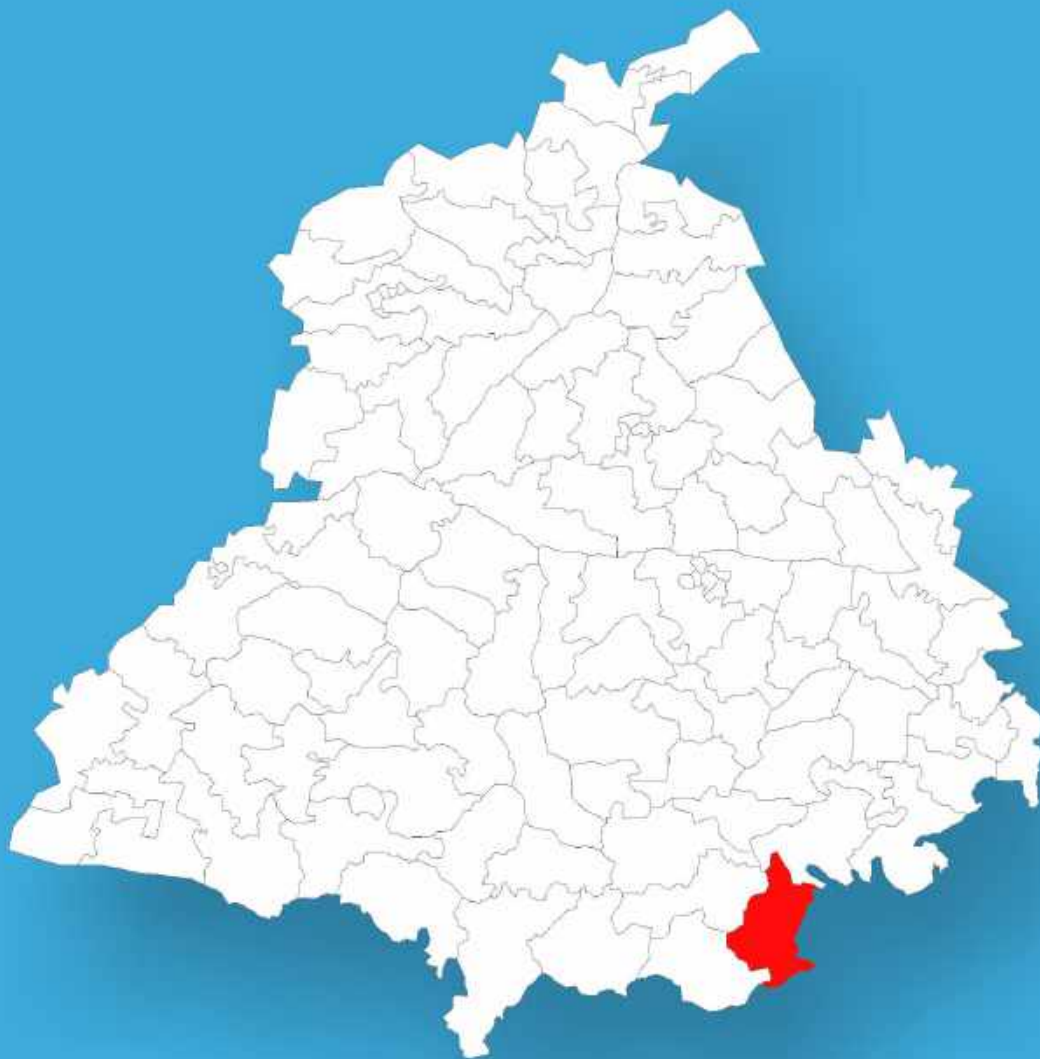




Punjab

Assembly Factbook™

Shutrana Assembly Constituency



Key Electoral Data of Shutrana
Assembly Constituency (Vidhan Sabha)

Punjab

Assembly Factbook™

Shutrana Assembly Constituency



Shutrana Vidhan Sabha

Editor & Director

Dr. R.K. Thukral

Research Editor

Dr. Shafeeq Rahman

Compiled, Researched and Published by Datanet India Pvt. Ltd.

D-100, 1st Floor,

Okhla Industrial Area, Phase-I,

New Delhi- 110020.

Ph.: 91-11- 43580781-84

Email : support@indiastatpublications.com

Website : www.indiastatelections.com

Online Book Store :

www.indiastatpublications.com

Report No. : AFB/PB-117-0125

ISBN : 978-93-5822-440-5

First Edition : January, 2018

Eighth Updated Edition : January, 2025

Price : Rs.11500/-

US\$ 310

© **Datanet India Pvt. Ltd.**

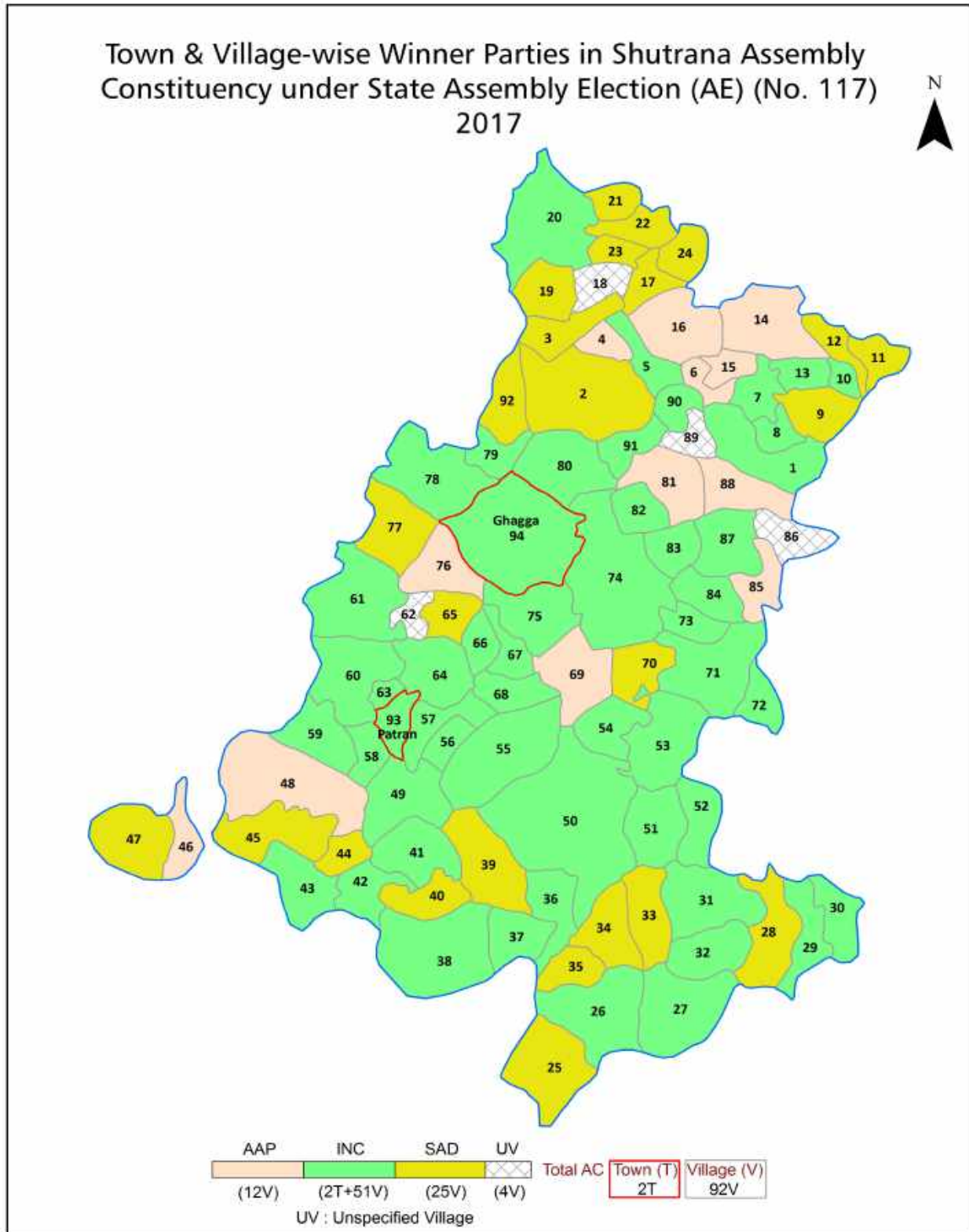
All rights reserved. No part of this book may be reproduced, stored in a retrieval system or transmitted in any form or by any means, mechanical photocopying, photographing, scanning, recording or otherwise without the prior written permission of the publisher. Please refer to Disclaimer at page no. 224 for the use of this publication.

Printed in India

Contents

No.	Particulars	Page No.
	Introduction	
1	Assembly Constituency - (Vidhan Sabha) at a Glance Features of Assembly as per Delimitation Commission of India (2008)	1-2
	Location and Political Maps	
2	Location Map Boundaries of Assembly Constituency - (Vidhan Sabha) in District Boundaries of Assembly Constituency under Parliamentary Constituency - (Lok Sabha) Town & Village-wise Winner Parties- 2024, 2022, 2019, 2017, 2014, 2012 and 2009	3-11
	Administrative Setup (2011)	
3	District Sub-district Towns Villages Inhabited Villages Uninhabited Villages Village Panchayat Intermediate Panchayat	12-17
	Demographics (2011)	
4	Population Households Rural/Urban Population Towns and Villages by Population Size Sex Ratio (Total & 0-6 Years) Religious Population Social Population Literacy Rate	18-19
	Electoral Features	
5	Important Dates of Last Elections Held Electors by Gender Service Electors Voters Voters Turnout Polling Stations & Average Number of Electors per Polling Station Electors by Age Group Present Elected Representatives	20-25
	Historical Summary Election Results	
6	Vote Share of Major Parties Winning Margin (Number & Percentage) Polarity of Parties Summary Result of Assembly Segment of Parliamentary Elections 2024, 2019, 2014, 2009, 2004 and 1999 Summary Result of Assembly Elections 2022, 2017, 2012, 2007, 2002, 1997, 1992, 1985, 1980 and 1977	26-44
	Polling Station Level Election Results	
7	Name and Number of Polling Station 2024, 2022, 2019, 2017, 2014, 2012 and 2009 Polling Station-wise Electors, Voters & Voters Turnout 2024, 2022, 2019, 2017, 2014, 2012 and 2009 Polling Station wise Elections Results 2024, 2022, 2019, 2017, 2014, 2012 and 2009	45-168
8	Panchayat Election Results Panchayat Result 2013	169-205
	Share of Assembly Constituency	
9	Share of Assembly Constituency - (Vidhan Sabha) in State, District and Parliamentary Constituency - (Lok Sabha)	206
	Socio-Economic Amenities (2011)	
10	Access to Administrative Units Agricultural, Manufacturing and Industrial Commodities Demographic Indicators Education Health & Manpower Drinking Water Supply Sanitation Entertainment and Recreations Infrastructure Power Food Allocation Distribution and Marketing of Agriculture Commodities Infrastructure Transport and Road Infrastructure Communication Banking and Financial Services Land Use Irrigation Source	208-222
11	Abbreviation & Sources	223
12	Disclaimer	224

Location & Political Map



Administrative Setup

List of Village Panchayat & Intermediate Panchayat (Block) Name- 2011

Village Name	Village Panchayat Name	Intermediate Panchayat Name
Arain Majra (86)	Araunmazr	Samana
Arnetu (191)	Arnetu	Patran
Arno (205)	Arno, Arno Khurd, Dera Rajputan	Patran
Asmanpur (90)	Assmanpur	Samana
Atalan (181)	Atalan	Patran
Badshahpur (188)	Badshahpur	Samana
Bakraha (194)	Bakraha,Joginder Nagar	Patran
Baras (130)	Baras, Santpura	Patran
Beharjach (204)	Beharjach	Patran
Bhagwanpur Alias Sadharanpur (192)	Sadharanpur	Patran
Bhedpuri (63)	Bhedpuri	Samana
Bhutgarh (153)	Bhutgarh	Patran
Bishanpur Alias Banwala (174)	Banwala	Patran
Bujrak (70)	Bujrak	Samana
Burar (179)	Burar	Patran
Buta Singhwala Urf Harigarh (93)	Buta Singhwala	Samana
Chunagra (158)	Chunagra	Patran
Chupki (78)	Chupki	Samana
Daftriwala (182)	Daftriwala	Patran
Daroli (195)	Daroli,Hira Nagar	Patran
Dawarkapur (190)	Dawarkapur	Samana
Dehdana (184)	Dehdana	Patran
Devgarh (159)	Devgarh	Patran
Dhabi Gujran (138)	Dhabi Gujjaran	Patran
Dhanetha (75)	Dhanetha	Samana
Dharamgarh (68)	Dharamgarrh	Samana
Dhur (138)	Duharh	Patran
Dodra (64)	Dodra	Samana
Dotal (173)	Dotal,Ganga Nagar Sunder Nagar	Patran

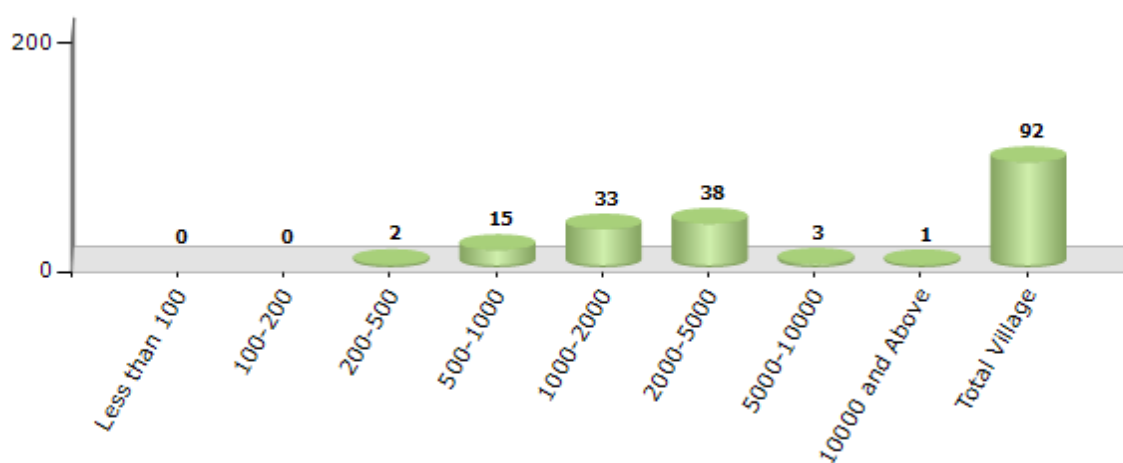
Contd....

Demographics

Number of Villages by Population Size - 2011

Less than 100	100-200	200-500	500-1000	1000-2000	2000-5000	5000-10000	10000 and Above	Total Village
0	0	2	15	33	38	3	1	92

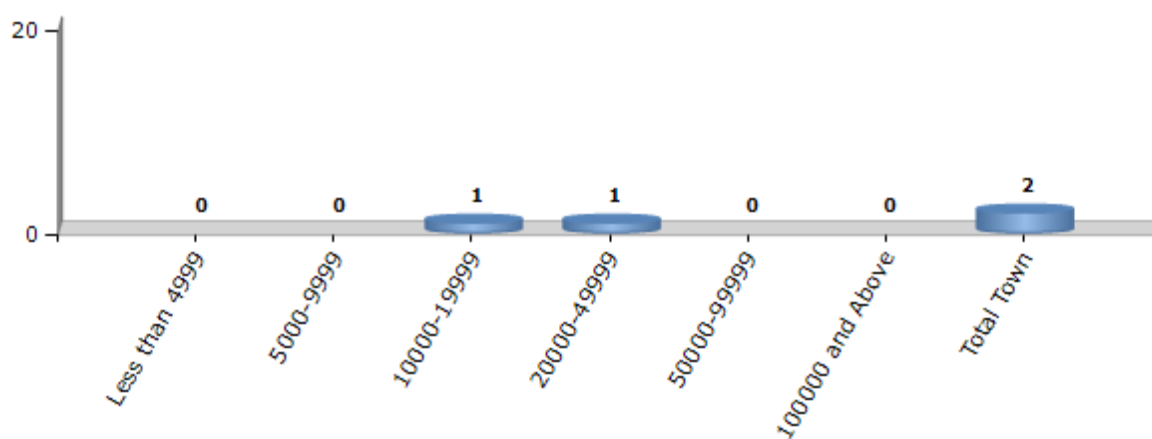
Number of Villages by Population Size - 2011



Number of Towns by Population Size - 2011

Less than 4999	5000-9999	10000-19999	20000-49999	50000-99999	100000 and Above	Total Town
0	0	1	1	0	0	2

Number of Towns by Population Size - 2011

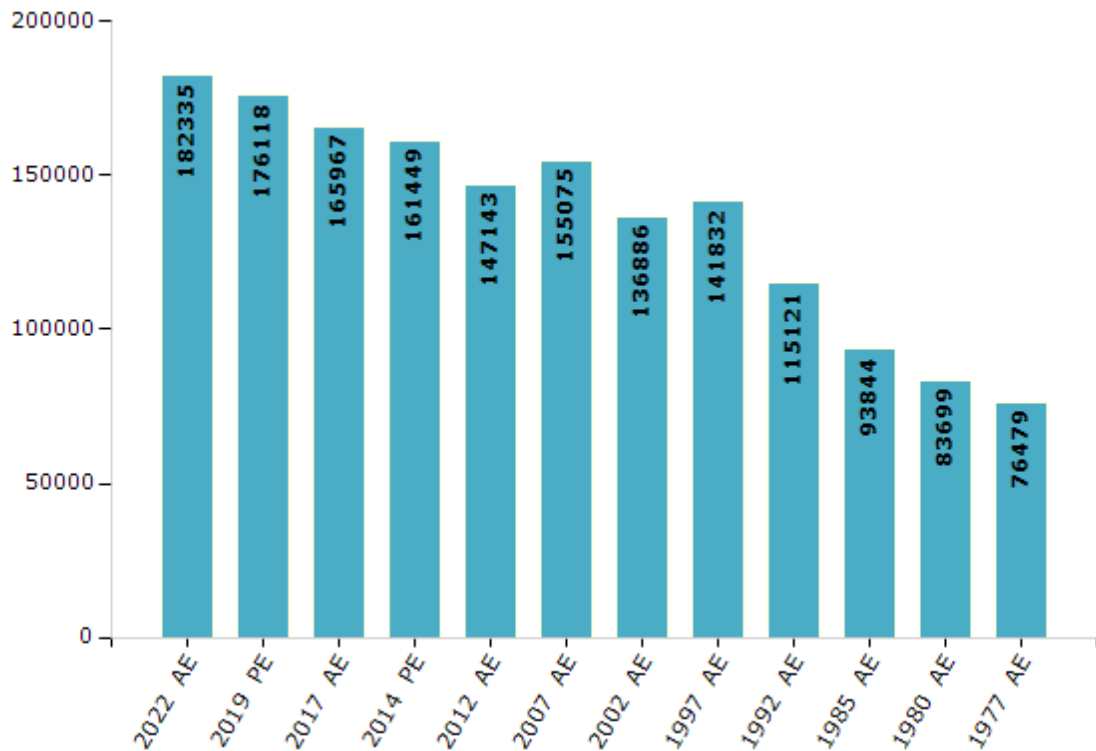


Electoral Features

Electors by Male & Female

Year	Male	Female	Others	Total	Year	Male	Female	Others	Total
2022 AE	95498	86830	7	182335	1992 AE	62559	52562	-	115121
2019 PE	92367	83750	1	176118	1985 AE	51296	42548	-	93844
2017 AE	88277	77688	2	165967	1980 AE	48619	35080	-	83699
2014 PE	85438	76011	0	161449	1977 AE	44109	32370	-	76479
2012 AE	78236	68907	0	147143	1972 AE	-	-	-	-
2009 PE	-	-	-	-	1969 AE	-	-	-	-
2007 AE	80491	74584	-	155075	1967 AE	-	-	-	-
2004 PE	-	-	-	-	1962 AE	-	-	-	-
2002 AE	72446	64440	-	136886	1957 AE	-	-	-	-
1999 PE	-	-	-	-	1952 AE	-	-	-	-
1997 AE	76064	65768	-	141832					

Number of Electors



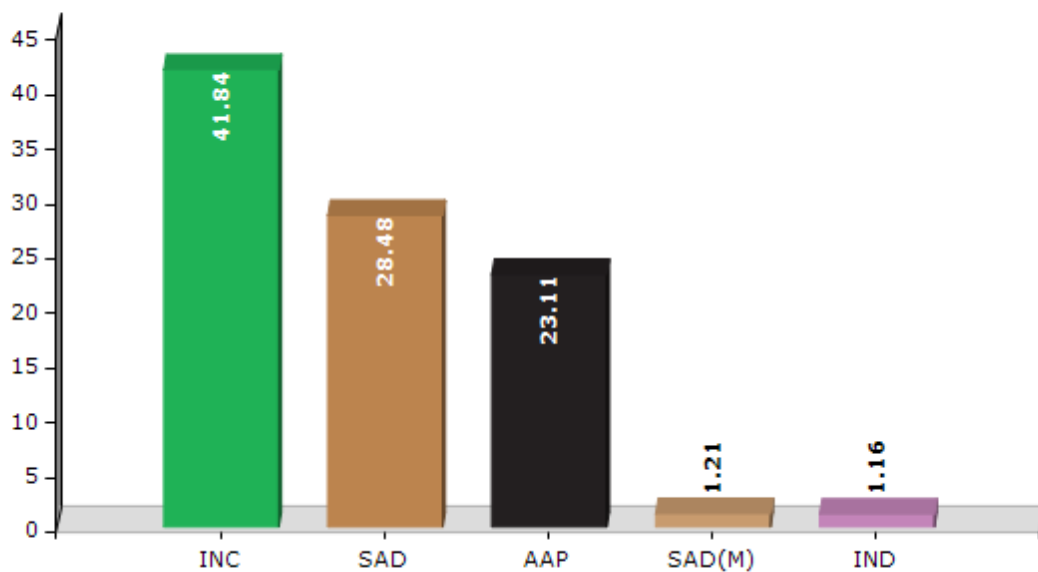
Note : AE : Assembly Election, PE : Assembly Segment of Parliamentary Election

Historical Summary Election Results

Summary Result of Assembly Election - 2017

Candidate Name	Party	Votes	Votes %
Nirmal Singh	INC	58008	41.84
Vaninder Kaur Loomba	SAD	39488	28.48
Palwinder Kaur	AAP	32037	23.11
Amarjit Singh	SAD(M)	1671	1.21
Bira Singh	IND	1602	1.16
Sardeep Singh	BSP	1229	0.89
Naranjan Singh	CPI	896	0.65
Parminder Singh	IND	693	0.5
Nirmal Singh	IND	563	0.41
Baldev Ram	AITC	549	0.4
Kulwinder Singh	DEMSWP	504	0.36
Gurjant Singh	IND	268	0.19
Narinder	IND	254	0.18
	NOTA	877	0.63

Votes Percentage of Top Parties - 2017



Polling Station Level Election Results

Number and Name of Polling Stations (PS) (2022)

Number of Polling Stations	Name of Polling Stations	Number of Polling Stations	Name of Polling Stations
1	Govt.High School,Kularan	22	Govt.Ele.School,Ratanherhi
2	Govt.High School,Kularan	23	Govt. Elementary School, Rajgarh
3	Govt.High School,Kularan	24	Govt.Ele.School,Marorhi
4	Govt.High School,Kularan	25	Govt.Ele.School,Marorhi
5	Govt.Ele.School,Kularan	26	Govt.Ele.School,Mardan Herhi
6	Govt.Ele.School,Kularan	27	Govt.Ele.School,Mardan Herhi
7	Govt. Ele School, Bhedpuri	28	Govt.Ele.School,Arai Majra
8	Govt.Ele School, Dodra	29	Govt.Middle School,Lutaki Majra
9	Govt.Ele.School,Kotli	30	Govt.Ele.School, Munda Khera
10	Govt.Ele.School, Ghangroli	31	Govt.Ele.School,Shahpur
11	Govt.Ele.School,Bujrak	32	Govt.Ele.School,Shahpur
12	Govt.Ele.School,Bujrak	33	Govt.Ele.School,Prem Singh Wala
13	Govt.High School, Sahijpur Kalan	34	Govt.Senior Secndry School,Kakrala
14	Govt Elementary School, Sahijpur Khurd	35	Govt.Senior Secndry School,Kakrala
15	Govt High School, Mavi Kalan	36	Govt.Senior Secndry School,Kakrala
16	Govt High School, Mavi Kalan	37	Govt.Ele School,Kakrala
17	Govt.Senior Secndry School,Dhanetha	38	Govt.Ele School,Kakrala
18	Govt.Senior Secndry School,Dhanetha	39	Govt.Ele.School,Chupaki
19	Govt.Senior Secndry School,Dhanetha	40	Govt.Ele.School,Nagri
20	Govt.Ele.School,Asmanpur	41	Govt.Ele.School,Dedhana
21	Govt Ele. School, Sapparherhi	42	Govt.Ele.School,Dedhana

Contd....

Polling Station Level Election Results

Polling Station-wise Votes Secured by Overall Top Five Parties in Shutrana Assembly in Assembly Election (AE) under Patiala Parliamentary Constituency in Punjab (2022)

Number of Polling Station	Winner - Kulwant Singh Bazigar (AAP)	Runner-up - Vaninder Kaur Loomba (SAD)	3rd - Darbara Singh (INC)	4th - Gurjit Singh (SAD(M))	5th - Naryan Singh (PLCP)	NOTA	Other	Total Votes Secured
36	551	171	39	49	8	6	15	839
37	442	93	24	20	7	2	2	590
38	561	159	66	25	33	19	21	884
39	549	214	44	9	4	14	23	857
40	389	168	53	6	9	6	22	653
41	459	82	51	1	12	10	13	628
42	289	132	55	1	11	10	23	521
43	639	136	48	7	13	16	8	867
44	599	198	49	27	7	5	10	895
45	317	121	16	33	3	5	5	500
46	406	151	3	3	2	2	4	571
47	407	75	18	3	8	7	27	545
48	460	79	74	30	3	5	22	673
49	477	95	31	40	4	7	19	673
50	444	135	23	38	11	8	27	686
51	366	109	71	21	2	16	54	639
52	245	146	23	30	3	8	37	492
53	265	115	16	13	14	4	15	442
54	449	130	6	6	8	11	9	619
55	374	96	68	5	5	3	15	566
56	451	163	46	7	17	5	10	699
57	562	119	82	36	12	10	20	841
58	501	126	7	41	1	8	26	710
59	241	157	81	9	7	2	14	511
60	342	126	150	96	7	5	22	748
61	497	114	6	1	5	12	13	648
62	397	88	62	36	2	9	7	601
63	470	108	23	51	12	10	15	689
64	308	128	18	100	12	2	11	579
65	629	131	48	19	8	15	13	863
66	567	80	61	32	6	2	6	754
67	302	119	42	149	12	1	14	639
68	263	211	28	55	0	5	91	653
69	605	220	48	20	0	8	19	920
70	240	79	48	63	1	2	17	450

Contd....

Polling Station Level Election Results

Winner, Runner-up and 3rd Party Position & Winning Margin According to Polling Stations in Shutrana Assembly in Assembly Election (AE) under Patiala Parliamentary Constituency in Punjab (2022)

Polling Station Number	Winner Party	Winner Votes (%)	Runner-up Party	Runner-up Votes (%)	Winning Margin Votes (%)	Third Party	Third Party Votes (%)	Other Votes (%)
71	INC	412 (45.03)	AAP	408 (44.59)	4 (0.44)	SAD	58 (6.34)	37 (4.04)
72	AAP	484 (67.5)	SAD	144 (20.08)	340 (47.42)	INC	64 (8.93)	25 (3.49)
73	AAP	187 (44.1)	SAD	134 (31.6)	53 (12.5)	INC	64 (15.09)	39 (9.2)
74	AAP	350 (47.43)	SAD	210 (28.46)	140 (18.97)	SAD(M)	92 (12.47)	86 (11.65)
75	AAP	449 (56.84)	SAD	175 (22.15)	274 (34.69)	INC	50 (6.33)	116 (14.68)
76	AAP	330 (65.61)	SAD	112 (22.27)	218 (43.34)	SAD(M)	17 (3.38)	44 (8.75)
77	AAP	273 (55.71)	SAD	123 (25.1)	150 (30.61)	INC	35 (7.14)	59 (12.04)
78	AAP	561 (62.75)	SAD	227 (25.39)	334 (37.36)	INC	41 (4.59)	65 (7.27)
79	AAP	243 (53.06)	SAD	114 (24.89)	129 (28.17)	PLCP	40 (8.73)	61 (13.32)
80	AAP	384 (62.64)	SAD	68 (11.09)	316 (51.55)	INC	56 (9.14)	105 (17.13)
81	AAP	406 (63.34)	SAD	88 (13.73)	318 (49.61)	INC	59 (9.2)	88 (13.73)
82	AAP	425 (66.72)	SAD	127 (19.94)	298 (46.78)	INC	41 (6.44)	44 (6.91)
83	AAP	196 (38.81)	IND (AS)	131 (25.94)	65 (12.87)	INC	122 (24.16)	56 (11.09)
84	AAP	492 (65.17)	SAD	156 (20.66)	336 (44.51)	INC	31 (4.11)	76 (10.07)
85	AAP	341 (69.88)	SAD	92 (18.85)	249 (51.03)	SAD(M)	17 (3.48)	38 (7.79)
86	AAP	469 (58.12)	INC	143 (17.72)	326 (40.4)	SAD	100 (12.39)	95 (11.77)
87	AAP	584 (60.39)	SAD	269 (27.82)	315 (32.57)	INC	51 (5.27)	63 (6.51)
88	AAP	364 (64.65)	SAD	135 (23.98)	229 (40.67)	INC	24 (4.26)	40 (7.1)
89	AAP	506 (68.01)	SAD	144 (19.35)	362 (48.66)	INC	50 (6.72)	44 (5.91)
90	AAP	454 (62.88)	SAD	153 (21.19)	301 (41.69)	SAD(M)	62 (8.59)	53 (7.34)
91	AAP	617 (67.8)	SAD	233 (25.6)	384 (42.2)	SAD(M)	24 (2.64)	36 (3.96)
92	AAP	570 (66.36)	SAD	194 (22.58)	376 (43.78)	INC	40 (4.66)	55 (6.4)
93	AAP	474 (66.76)	SAD	115 (16.2)	359 (50.56)	INC	69 (9.72)	52 (7.32)
94	AAP	263 (42.76)	INC	158 (25.69)	105 (17.07)	SAD	114 (18.54)	80 (13.01)
95	AAP	428 (56.61)	SAD	195 (25.79)	233 (30.82)	INC	54 (7.14)	79 (10.45)
96	AAP	166 (83.84)	SAD	16 (8.08)	150 (75.76)	SAD(M)	6 (3.03)	10 (5.05)
97	AAP	518 (60.87)	SAD	218 (25.62)	300 (35.25)	INC	72 (8.46)	43 (5.05)
98	AAP	452 (76.09)	SAD	73 (12.29)	379 (63.8)	INC	28 (4.71)	41 (6.9)
99	AAP	502 (69.05)	SAD	151 (20.77)	351 (48.28)	INC	29 (3.99)	45 (6.19)
100	AAP	451 (74.79)	SAD	73 (12.11)	378 (62.68)	SAD(M)	27 (4.48)	52 (8.62)
101	AAP	373 (70.78)	SAD	87 (16.51)	286 (54.27)	SAD(M)	24 (4.55)	43 (8.16)
102	AAP	583 (66.55)	SAD	144 (16.44)	439 (50.11)	INC	86 (9.82)	63 (7.19)
103	AAP	432 (55.53)	SAD	238 (30.59)	194 (24.94)	INC	45 (5.78)	63 (8.1)
104	AAP	349 (56.66)	SAD	174 (28.25)	175 (28.41)	INC	36 (5.84)	57 (9.25)
105	AAP	255 (61.3)	SAD	82 (19.71)	173 (41.59)	INC	48 (11.54)	31 (7.45)

Contd....

Socio-Economic Amenities - Rural

Access to Education Facilities

Particulars	Number of Villages (% of Population)				
	Available	Not Available	If Not Available (Distance of Nearest Facility)		
			A	B	C
Govt. Primary School	90 (99)	2 (1)	1 (0)	0 (0)	0 (0)
Private Primary School	31 (42)	61 (58)	0 (0)	0 (0)	0 (0)
Govt. Middle School	57 (76)	35 (24)	31 (22)	1 (0)	0 (0)
Private Middle School	20 (32)	72 (68)	1 (1)	0 (0)	0 (0)
Govt. Secondary School	21 (40)	71 (60)	29 (22)	34 (30)	1 (1)
Private Secondary School	10 (20)	82 (80)	1 (1)	1 (1)	0 (0)
Govt. Senior Secondary School	9 (22)	83 (78)	33 (30)	37 (39)	7 (4)
Private Senior Secondary School	5 (8)	87 (92)	1 (1)	1 (1)	0 (0)
Govt. Arts and Science Degree College	3 (3)	89 (97)	6 (5)	34 (37)	46 (52)
Private Arts and Science Degree College	0 (0)	92 (100)	0 (0)	0 (0)	2 (1)
Govt. Engineering College	0 (0)	92 (100)	0 (0)	8 (7)	69 (79)
Private Engineering College	0 (0)	92 (100)	0 (0)	1 (1)	14 (13)
Govt. Medicine College	0 (0)	92 (100)	0 (0)	4 (2)	86 (96)
Private Medicine College	0 (0)	92 (100)	0 (0)	0 (0)	2 (2)
Govt. Management Institute	0 (0)	92 (100)	0 (0)	4 (3)	66 (78)
Private Management Institute	0 (0)	92 (100)	0 (0)	1 (1)	21 (18)
Govt. Polytechnic	0 (0)	92 (100)	1 (0)	7 (7)	77 (87)
Private Polytechnic	0 (0)	92 (100)	0 (0)	1 (1)	6 (5)
Govt. Vocational Training School/ITI	1 (1)	91 (99)	2 (2)	20 (20)	47 (51)
Private Vocational Training School/ITI	1 (1)	91 (99)	3 (3)	3 (5)	16 (19)
Govt. Non Formal Training Centre	0 (0)	92 (100)	1 (2)	9 (8)	70 (80)
Private Non Formal Training Centre	0 (0)	92 (100)	0 (0)	2 (3)	10 (8)
Govt. School For Disabled	0 (0)	92 (100)	0 (0)	5 (4)	82 (91)
Private School For Disabled	0 (0)	92 (100)	0 (0)	0 (0)	5 (5)
Government Others	0 (0)	92 (100)	0 (0)	3 (2)	59 (68)
Private Others	0 (0)	92 (100)	0 (0)	0 (0)	30 (31)

Note : Distance A : Less than 5 km; B : Between 5-10 km; C : 10+ km.; Source : Data Analysis is based on 2011 Census.

DISCLAIMER

The Terms of Use and Disclaimer of Datanet India Private Limited (hereinafter referred to as "Datanet") for use of this analysis report of **Shutrana Assembly Constituency (Shutrana Vidhan Sabha)** :-

1. **Assembly Factbook™** is a Registered Trade Mark owned by Datanet.
2. All the maps are sketched and graphical representation only and have not been drawn to the scale and also not to represent the actual geographical area or boundary of the unit.
3. The data for the aforesaid analysis is based on authentic sources and has been culled from the various publications of Census, CSO and NSSO for district and block level data, various central and state government departments, Central & State Elections Commissions and the concerned Returning Officers' releases, Electoral Rolls, Election results and allied publications, internal assessment, surveys, estimates and analysis. Therefore, certain adjustment of data at micro level may have been done to arrive closer to the macro data.
4. Data have been provided on an "As Is" and "As AVAILABLE" basis
5. The colours shown in the maps or diagram and charts of a particular party, alliance or AC are indicative and do not represent them.
6. This publication which includes maps, sheets, graphs and data would be the property under copyright of Datanet only. The user may use these for its internal study, analysis and research purposes. It's public display, re-selling or any commercial uses by the user are not allowed.
7. Datanet has taken due care and caution in compilation and processing of data and allied information, but does not guarantee the accuracy, adequacy or completeness of any information/analysis and will be not responsible for any errors or omissions or for the results obtained from the use of such information/analysis.
8. All the contents for the publication have been culled from various authentic sources and Datanet reasonably believes such sources to be reliable, but does not make any representations, express or implied as to the accuracy or fitness of use of such information. The information or contents of the information/analysis do not constitute advice and should not be relied upon in making (or refraining from making) any decision. Any reliance placed upon the information provided by Datanet is the sole responsibility and strictly at the user's risk.
9. In no event will Datanet be liable for any damages (including, without limitation, damages for loss of business projects, or loss of profits) arising in contract, tort or otherwise from the use of or inability to use any of its contents, or from any action taken (or refrained from being taken) as a result of using the analysis or any of its contents. Datanet its directors, owners, editors, officials, employees, distributor and agents or any associate will not be liable for any errors in the information contained or any consequences arising from the use of the contents of the provided information/analysis.
10. If any provision of these terms and conditions is held invalid or illegal or unenforceable for any reason by any court of competent jurisdiction, such provision shall be severed and the remainder of provisions of the terms and conditions shall continue in full force and effect as if the Term of Use had been executed with the invalid, illegal or unenforceable provision eliminated.
11. If there are any discrepancies in the information provided, please bring it to attention of Datanet for suitable rectification measures.

**Buy Online This Complete Book At
Datanet India eBooks Store**

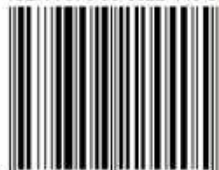
www.indiastatpublications.com

or go directly at

[http://www.indiastatpublications.com/
Assembly_factbook/Punjab/Patiala/ Shutrana](http://www.indiastatpublications.com/Assembly_factbook/Punjab/Patiala/Shutrana)

 **indiastat**elections

ISBN : 978-93-5822-440-5



9 789358 224405