



Rajasthan

Assembly Factbook™

Anunpgarh Assembly Constituency



Key Electoral Data of Anunpgarh
Assembly Constituency (Vidhan Sabha)

Rajasthan

Assembly Factbook™

Anunpgarh Assembly Constituency



Anunpgarh Vidhan Sabha

Editor & Director

Dr. R.K. Thukral

Research Editor

Dr. Shafeeq Rahman

Compiled, Researched and Published by Datanet India Pvt. Ltd.

D-100, 1st Floor,

Okhla Industrial Area, Phase-I,
New Delhi- 110020.

Ph.: 91-11- 43580781-84

Email : support@indiastatpublications.com

Website : www.indiastatelections.com

Online Book Store :

www.indiastatpublications.com

Report No. : AFB/RJ-006-0125

ISBN : 978-93-87267-22-0

First Edition : January, 2018

Eighth Updated Edition : January, 2025

Price : Rs. 11500/-

US\$ 310

© Datanet India Pvt. Ltd.

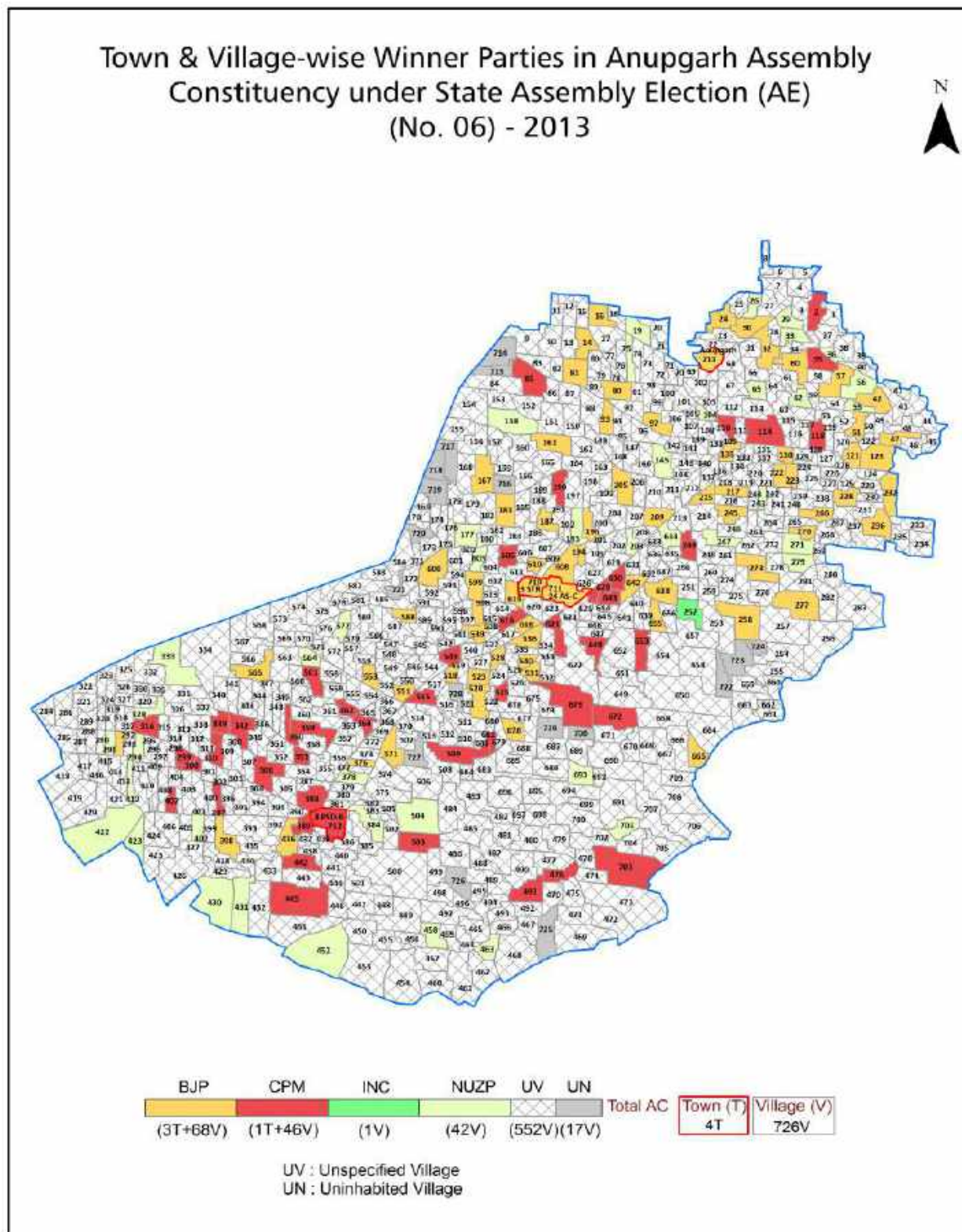
All rights reserved. No part of this book may be reproduced, stored in a retrieval system or transmitted in any form or by any means, mechanical photocopying, photographing, scanning, recording or otherwise without the prior written permission of the publisher. Please refer to Disclaimer at page no. 236 for the use of this publication.

Printed in India

Contents

No.	Particulars	Page No.
	Introduction	
1	Assembly Constituency - (Vidhan Sabha) at a Glance Features of Assembly as per Delimitation Commission of India (2008)	1-2
	Location and Political Maps	
2	Location Map Boundaries of Assembly Constituency - (Vidhan Sabha) in District Boundaries of Assembly Constituency under Parliamentary Constituency - (Lok Sabha) Town & Village-wise Winner Parties- 2024, 2023, 2019, 2018, 2014, 2013, 2009 and 2008	3-11
	Administrative Setup (2011)	
3	District Sub-district Towns Villages Inhabited Villages Uninhabited Villages Village Panchayat Intermediate Panchayat	12-46
	Demographics (2011)	
4	Population Households Rural/Urban Population Towns and Villages by Population Size Sex Ratio (Total & 0-6 Years) Religious Population Social Population Literacy Rate	47-48
	Electoral Features	
5	Important Dates of Last Elections Held Electors by Gender Service Electors Voters Voters Turnout Polling Stations & Average Number of Electors per Polling Station Electors by Age Group Present Elected Representatives	49-54
	Historical Summary Election Results	
6	Vote Share of Major Parties Winning Margin (Number & Percentage) Polarity of Parties Summary Result of Assembly Segment of Parliamentary Elections 2024, 2019, 2014 and 2009 Summary Result of Assembly Elections 2023, 2018, 2013 and 2008	55-64
	Polling Station Level Election Results	
7	Name and Number of Polling Station 2024, 2023, 2019, 2018, 2014, 2013, 2009 and 2008 Polling Station-wise Electors, Voters & Voters Turnout 2024, 2023, 2019, 2018, 2014, 2013, 2009 and 2008 Polling Station wise Elections Results 2024, 2023, 2019, 2018, 2014, 2013, 2009 and 2008	65-216
	Share of Assembly Constituency	
8	Share of Assembly Constituency - (Vidhan Sabha) in State, District and Parliamentary Constituency - (Lok Sabha)	217
	Socio-Economic Amenities (2011)	
9	Access to Administrative Units Agricultural, Manufacturing and Industrial Commodities Demographic Indicators Education Health & Manpower Drinking Water Supply Sanitation Entertainment and Recreations Infrastructure Power Food Allocation Distribution and Marketing of Agriculture Commodities Infrastructure Transport and Road Infrastructure Communication Banking and Financial Services Land Use Irrigation Source	219-233
10	Abbreviation & Sources	234-235
11	Disclaimer	236

Location & Political Map



Administrative Setup

List of Village Panchayat & Intermediate Panchayat (Block) Name - 2011

Village Name	Village Panchayat Name	Intermediate Panchayat Name
1 A-A	61 G. B.	Anupgarh
1 A-B	61 G. B.	Anupgarh
1 Am-A	2 Kld (365 Head)	Gharsana
1 Am-B	2 Kld (365 Head)	Gharsana
1 Anm	4 Kpd	Gharsana
1 Bd-A	13 Dol	Gharsana
1 Bd-B	13 Dol	Gharsana
1 Dd	9 L.M.B.	Gharsana
1 Dol	10 Kd (Ravla Gaon)	Gharsana
1 Dsm	11/12 N D (Nahrawali)	Gharsana
1 Fm	6 Zwm	Gharsana
1 Gd-A	2 Mld A	Gharsana
1 Gd-B	2 G M B	Gharsana
1 Gm-A	2 G M B	Gharsana
1 Gm-B	2 G M B	Gharsana
1 H	11P (Patroda)	Gharsana
1 Jm	20 L M	Gharsana
1 Jsm	2 Km	Gharsana
1 K-A	6 P	Gharsana
1 Kam-A	3 N , D,	Anupgarh
1 Kam-B	3 N , D,	Anupgarh
1 Kam-C	3 N , D,	Anupgarh
1 K-B	6 P	Gharsana
1 Kd-A	3 Kda	Gharsana
1 Kd-B	3 Kda	Gharsana
1 Khm	2 Mgm B Rojdi	Gharsana
1 Kld	2 Kld (365 Head)	Gharsana
1 Klm	4 Kpd	Gharsana
1 Km	2 Km	Gharsana

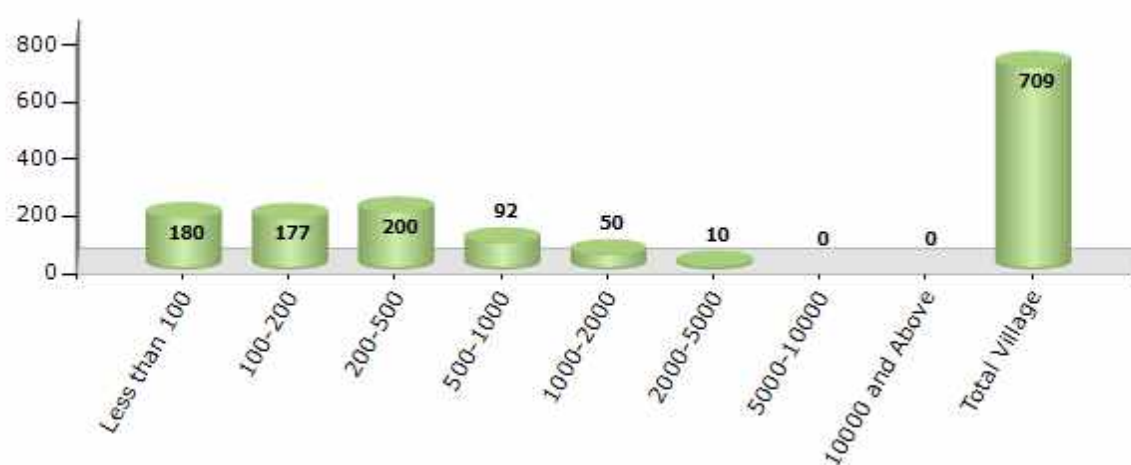
Contd....

Demographic

Number of Villages by Population Size - 2011

Less than 100	100-200	200-500	500-1000	1000-2000	2000-5000	5000-10000	10000 and Above	Total Village
180	177	200	92	50	10	0	0	709

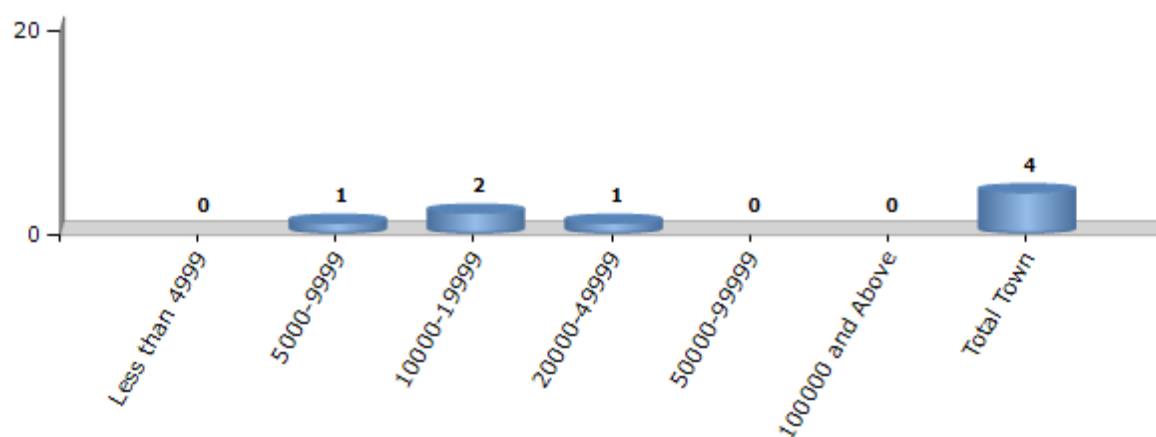
Number of Villages by Population Size - 2011



Number of Towns by Population Size - 2011

Less than 4999	5000-9999	10000-19999	20000-49999	50000-99999	100000 and Above	Total Town
0	1	2	1	0	0	4

Number of Towns by Population Size - 2011

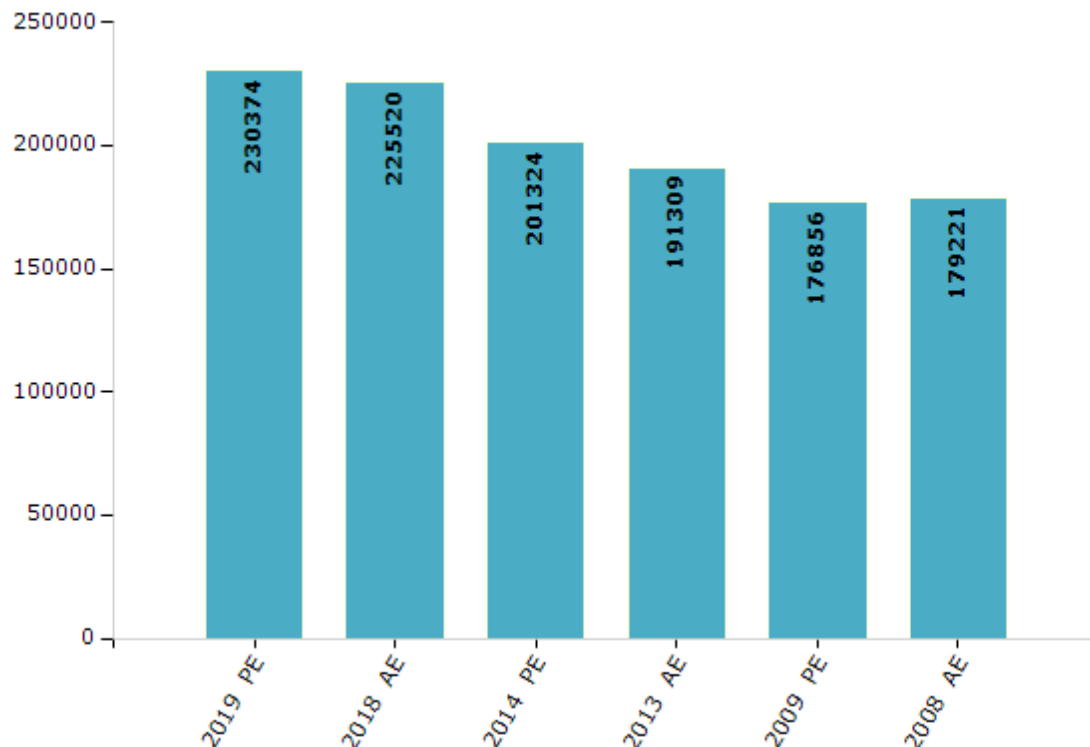


Electoral Features

Electors by Male & Female

Year	Male	Female	Others	Total	Year	Male	Female	Others	Total
2019 PE	121596	108778	0	230374	1993 AE	-	-	-	-
2018 AE	119225	106295	0	225520	1990 AE	-	-	-	-
2014 PE	107293	94031	0	201324	1985 AE	-	-	-	-
2013 AE	101694	89615	0	191309	1980 AE	-	-	-	-
2009 PE	96130	80726	-	176856	1977 AE	-	-	-	-
2008 AE	97064	82157	-	179221	1972 AE	-	-	-	-
2004 PE	-	-	-	-	1967 AE	-	-	-	-
2003 AE	-	-	-	-	1962 AE	-	-	-	-
1999 PE	-	-	-	-	1957 AE	-	-	-	-
1998 AE	-	-	-	-	1952 AE	-	-	-	-

Number of Electors

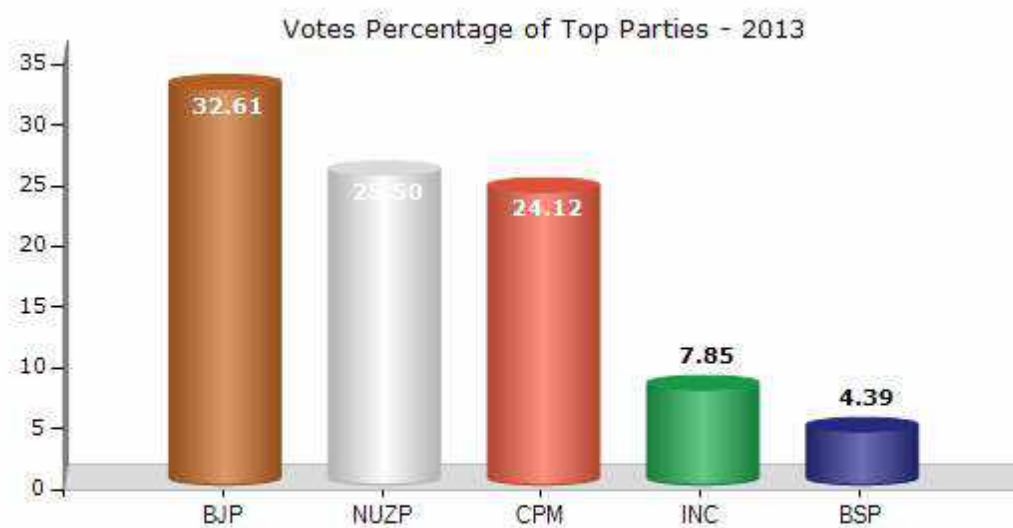


Note : AE : Assembly Election, PE : Assembly Segment of Parliamentary Election

Historical Summary Election Results

Summary Result of Assembly Election - 2013

Candidate Name	Party	Votes	Votes %
Shimla Bawri	BJP	51145	32.61
Shimla Devi Nayak	NUZP	39999	25.5
Pawan Kumar Duggal	CPM	37827	24.12
Hariram	INC	12305	7.85
Harish Sanwaria	BSP	6886	4.39
Dularam	NCP	1442	0.92
Rajesh Kumar	MEDP	1065	0.68
Bagga Singh	NPEP	888	0.57
Aduram	RJVP	636	0.41
Kuldeep Kour	BA S D	611	0.39
	NOTA	4046	2.58



Polling Station Level Election Results

Number and Name of Polling Stations (PS) (2018)

Number of Polling Stations	Name of Polling Stations	Number of Polling Stations	Name of Polling Stations
1	Government Primary School 5 UDM	22	Government Secondary School 4 A Center Part
2	Government Upper Primary School 76 GB	23	Government Primary School 70 GB
3	Government Primary School 86 GB	24	Government Senior Secondary School 2 PGM-B Right Part
4	Government Primary School 87 GB	25	Government Senior Secondary School 2 PGM-B Left Part
5	Government Senior Secondary School 78 GB	26	Government Primary School 1 PGM (Dhani)
6	Government Senior Secondary School 74 GB	27	Government Primary School No. 2, Anupgarh
7	Government Primary School 75 GB	28	Office Block Elementary Education Officer (SSA) Anupgarh
8	Government Upper Primary School 68/2 GB	29	Government Primary School Ward No. 18 Anupgarh Right Part
9	Government Primary School 71 GB (Mogi)	30	Government Primary School Ward No. 18 Anupgarh Left Part
10	Government Senior Secondary School 72 GB	31	Government Girls Senior Secondary School Anupgarh Right Part
11	Government Primary School 66 GB	32	Government Girls Senior secondary school Anupgarh Left Part
12	Government Senior Secondary School 65 GB	33	Government Upper Primary School No. 4 Anupgarh Left Part (Old Name Seth Boolchand Nagal Government Upper Primary school No. 1 Anupgarh)
13	Government Primary School 62 GB-A	34	Government Upper Primary school No. 4 Anupgarh Right Part (Old Name Seth Boolchand Nagal Government Upper Primary school No. 1 Anupgarh)
14	Government Senior Secondary School Ramsinghpur Right Part	35	Mata Mohani Devi Girls College Room No. 1 Anupgarh
15	Government Senior Secondary School Ramsinghpur Center Part	36	Mata Mohani Devi Girls College Room No. 2 Anupgarh
16	Government Senior Secondary School Ramsinghpur Left Part	37	Mata Mohani Devi Girls College Room No. 3 Anupgarh
17	Government Primary School 55 GB	38	Mata Mohani Devi Girls College Room No. 4 Anupgarh
18	Government Upper Primary School 20 AS	39	Municipality Building Anupgarh
19	Government Primary School 1/2 A	40	Government Upper Primary School No. 4 Anupgarh
20	Government Senior Secondary School 61 GB	41	Office Executive Engineer PWD Anupgarh
21	Government Secondary School 4 A Right Part	42	Sharda Vidya Niketan Senior Secondary School Ward No. 8 Anupgarh

Contd....

Polling Station Level Election Results

Polling Station-wise Votes Secured by Overall Top Five Parties in Anupgarh Assembly in Assembly Election (AE) under Bikaner Parliamentary Constituency in Rajasthan (2018)

Number of Polling Station	Winner - Santosh (BJP)	Runner-up - Kuldeep Indora (INC)	3rd - Shimla Devi Nayak (IND)	4th - Pawan Kumar Duggal (CPM)	5th - Shankar Lal (BSP)	NOTA	Other	Total Votes Secured
36	355	216	126	68	4	36	7	812
37	353	266	24	29	8	38	3	721
38	397	340	9	17	1	18	2	784
39	392	261	10	48	2	22	4	739
40	456	258	35	36	3	21	2	811
41	378	290	23	36	1	31	3	762
42	480	295	26	70	3	51	6	931
43	174	228	156	34	12	13	7	624
44	385	155	72	81	6	18	13	730
45	347	410	124	87	3	16	8	995
46	389	286	67	127	7	22	10	908
47	376	402	71	89	9	32	7	986
48	359	457	55	61	6	24	5	967
49	618	286	28	44	9	11	11	1007
50	555	192	22	122	3	16	13	923
51	415	206	78	102	9	19	9	838
52	535	277	65	89	6	15	4	991
53	156	165	52	91	7	3	2	476
54	337	189	120	131	4	24	15	820
55	350	212	96	103	7	7	5	780
56	369	287	136	57	10	16	11	886
57	408	209	134	113	16	27	13	920
58	380	104	372	38	6	25	13	938
59	398	215	68	305	20	12	11	1029
60	315	160	51	23	0	4	2	555
61	149	85	45	146	1	5	7	438
62	406	370	206	82	2	31	14	1111
63	265	141	36	73	2	5	0	522
64	528	242	109	98	4	13	10	1004
65	252	107	149	67	3	14	12	604
66	336	160	158	95	21	18	9	797
67	267	125	137	103	5	8	6	651
68	288	314	72	85	4	11	12	786
69	284	210	51	126	6	1	7	685
70	148	162	35	83	5	7	5	445

Contd....

Polling Station Level Election Results

Winner, Runner-up and 3rd Party Position & Winning Margin According to Polling Stations in Anupgarh Assembly in Assembly Election (AE) under Bikaner Parliamentary Constituency in Rajasthan (2018)

Polling Station Number	Winner Party	Winner Votes (%)	Runner-up Party	Runner-up Votes (%)	Winning Margin Votes (%)	Third Party	Third Party Votes (%)	Other Votes (%)
71	INC	193 (41.96)	BJP	174 (37.83)	19 (4.13)	CPM	65 (14.13)	28 (6.09)
72	INC	310 (36.99)	BJP	251 (29.95)	59 (7.04)	IND (SDN)	159 (18.97)	118 (14.08)
73	INC	232 (39.06)	BJP	229 (38.55)	3 (0.51)	CPM	72 (12.12)	61 (10.27)
74	INC	267 (27.99)	BJP	224 (23.48)	43 (4.51)	CPM	212 (22.22)	251 (26.31)
75	BJP	329 (38.17)	IND (SDN)	255 (29.58)	74 (8.59)	INC	190 (22.04)	88 (10.21)
76	INC	522 (53.43)	BJP	254 (26)	268 (27.43)	CPM	93 (9.52)	108 (11.05)
77	BJP	300 (41.61)	IND (SDN)	169 (23.44)	131 (18.17)	INC	115 (15.95)	137 (19)
78	BJP	384 (49.36)	INC	149 (19.15)	235 (30.21)	CPM	135 (17.35)	110 (14.14)
79	INC	259 (28)	IND (SDN)	259 (28)	0 (0)	BJP	235 (25.41)	172 (18.59)
80	INC	372 (37.13)	IND (SDN)	270 (26.95)	102 (10.18)	BJP	246 (24.55)	114 (11.38)
81	BJP	279 (29.97)	IND (SDN)	235 (25.24)	44 (4.73)	INC	224 (24.06)	193 (20.73)
82	BJP	582 (61.78)	INC	162 (17.2)	420 (44.58)	CPM	100 (10.62)	98 (10.4)
83	BJP	243 (45.68)	CPM	140 (26.32)	103 (19.36)	INC	99 (18.61)	50 (9.4)
84	BJP	270 (63.53)	INC	69 (16.24)	201 (47.29)	CPM	49 (11.53)	37 (8.71)
85	BJP	362 (64.41)	CPM	82 (14.59)	280 (49.82)	INC	80 (14.23)	38 (6.76)
86	BJP	380 (59.47)	INC	197 (30.83)	183 (28.64)	CPM	30 (4.69)	32 (5.01)
87	BJP	267 (49.72)	INC	218 (40.6)	49 (9.12)	CPM	26 (4.84)	26 (4.84)
88	BJP	374 (39.04)	INC	280 (29.23)	94 (9.81)	CPM	160 (16.7)	144 (15.03)
89	INC	264 (45.28)	BJP	112 (19.21)	152 (26.07)	IND (SDN)	103 (17.67)	104 (17.84)
90	INC	304 (39.9)	CPM	205 (26.9)	99 (13)	BJP	145 (19.03)	108 (14.17)
91	BJP	393 (45.43)	INC	239 (27.63)	154 (17.8)	IND (SDN)	138 (15.95)	95 (10.98)
92	BJP	554 (55.73)	INC	274 (27.57)	280 (28.16)	CPM	100 (10.06)	66 (6.64)
93	INC	341 (36.94)	BJP	306 (33.15)	35 (3.79)	IND (SDN)	213 (23.08)	63 (6.83)
94	BJP	264 (46.89)	IND (SDN)	121 (21.49)	143 (25.4)	INC	104 (18.47)	74 (13.14)
95	BJP	355 (37.85)	INC	284 (30.28)	71 (7.57)	IND (SDN)	150 (15.99)	149 (15.88)
96	INC	328 (37.02)	BJP	301 (33.97)	27 (3.05)	IND (SDN)	143 (16.14)	114 (12.87)
97	BJP	273 (47.89)	INC	201 (35.26)	72 (12.63)	CPM	60 (10.53)	36 (6.32)
98	INC	323 (38.27)	BJP	301 (35.66)	22 (2.61)	CPM	100 (11.85)	120 (14.22)
99	INC	219 (44.51)	BJP	173 (35.16)	46 (9.35)	IND (SDN)	53 (10.77)	47 (9.55)
100	BJP	306 (39.69)	INC	269 (34.89)	37 (4.8)	IND (SDN)	123 (15.95)	73 (9.47)
101	BJP	383 (49.04)	INC	258 (33.03)	125 (16.01)	IND (SDN)	52 (6.66)	88 (11.27)
102	BJP	228 (40.43)	INC	202 (35.82)	26 (4.61)	IND (SDN)	89 (15.78)	45 (7.98)
103	BJP	296 (39.36)	IND (SDN)	236 (31.38)	60 (7.98)	INC	164 (21.81)	56 (7.45)
104	BJP	208 (35.8)	IND (SDN)	205 (35.28)	3 (0.52)	INC	133 (22.89)	35 (6.02)
105	INC	344 (50.96)	BJP	201 (29.78)	143 (21.18)	IND (SDN)	97 (14.37)	33 (4.89)

Contd....

Socio-Economic Amenities - Rural

Access to Education Facilities

Particulars	Number of Village (% of Population)				
	Available	Not Available	If Not Available (Distance of Nearest Facility)		
			A	B	C
Govt. Primary School	154 (62)	555 (38)	240 (11)	11 (1)	1 (0)
Private Primary School	79 (40)	630 (60)	213 (19)	78 (7)	10 (1)
Govt. Middle School	59 (33)	650 (67)	393 (36)	121 (8)	12 (1)
Private Middle School	65 (34)	644 (66)	53 (6)	31 (4)	17 (3)
Govt. Secondary School	31 (17)	678 (83)	274 (33)	221 (23)	97 (8)
Private Secondary School	34 (20)	675 (80)	38 (4)	17 (2)	13 (3)
Govt. Senior Secondary School	1 (1)	708 (99)	100 (13)	285 (42)	272 (30)
Private Senior Secondary School	9 (8)	700 (92)	23 (4)	8 (1)	12 (2)
Govt. Arts and Science Degree College	0 (0)	709 (100)	0 (0)	3 (0)	79 (10)
Private Arts and Science Degree College	4 (1)	705 (99)	45 (8)	163 (29)	415 (52)
Govt. Engineering College	0 (0)	709 (100)	0 (0)	0 (0)	438 (65)
Private Engineering College	0 (0)	709 (100)	3 (1)	2 (0)	265 (34)
Govt. Medicine College	0 (0)	709 (100)	0 (0)	0 (0)	668 (96)
Private Medicine College	0 (0)	709 (100)	0 (0)	0 (0)	41 (4)
Govt. Management Institute	0 (0)	709 (100)	0 (0)	0 (0)	336 (45)
Private Management Institute	0 (0)	709 (100)	0 (0)	0 (0)	372 (55)
Govt. Polytechnic	0 (0)	709 (100)	0 (0)	0 (0)	542 (78)
Private Polytechnic	0 (0)	709 (100)	0 (0)	0 (0)	167 (22)
Govt. Vocational Training School/ITI	1 (0)	708 (100)	21 (3)	71 (14)	324 (45)
Private Vocational Training School/ITI	1 (1)	708 (99)	12 (3)	38 (7)	237 (26)
Govt. Non Formal Training Centre	0 (0)	709 (100)	1 (0)	5 (1)	112 (17)
Private Non Formal Training Centre	0 (0)	709 (100)	34 (7)	93 (18)	463 (56)
Govt. School For Disabled	0 (0)	709 (100)	0 (0)	0 (0)	0 (0)
Private School For Disabled	0 (0)	709 (100)	0 (0)	0 (0)	709 (100)
Government Others	0 (0)	709 (100)	0 (0)	0 (0)	0 (0)
Private Others	0 (0)	709 (100)	0 (0)	0 (0)	0 (0)

Note : Distance A : Less than 5 km; B : Between 5-10 km; C : 10+ km.; Source : Data Analysis is based on 2011 Census.

DISCLAIMER

The Terms of Use and Disclaimer of Datanet India Private Limited (hereinafter referred to as "Datanet") for use of this analysis report of **Anupgarh Assembly Constituency (Anupgarh Vidhan Sabha)** :-

1. **Assembly Factbook™** is a Registered Trade Mark owned by Datanet.
2. All the maps are sketched and graphical representation only and have not been drawn to the scale and also not to represent the actual geographical area or boundary of the unit.
3. The data for the aforesaid analysis is based on authentic sources and has been culled from the various publications of Census, CSO and NSSO for district and block level data, various central and state government departments, Central & State Elections Commissions and the concerned Returning Officers' releases, Electoral Rolls, Election results and allied publications, internal assessment, surveys, estimates and analysis. Therefore, certain adjustment of data at micro level may have been done to arrive closer to the macro data.
4. Data have been provided on an "As Is" and "As AVAILABLE" basis
5. The colours shown in the maps or diagram and charts of a particular party, alliance or AC are indicative and do not represent them.
6. This publication which includes maps, sheets, graphs and data would be the property under copyright of Datanet only. The user may use these for its internal study, analysis and research purposes. It's public display, re-selling or any commercial uses by the user are not allowed.
7. Datanet has taken due care and caution in compilation and processing of data and allied information, but does not guarantee the accuracy, adequacy or completeness of any information/analysis and will be not responsible for any errors or omissions or for the results obtained from the use of such information/analysis.
8. All the contents for the publication have been culled from various authentic sources and Datanet reasonably believes such sources to be reliable, but does not make any representations, express or implied as to the accuracy or fitness of use of such information. The information or contents of the information/analysis do not constitute advice and should not be relied upon in making (or refraining from making) any decision. Any reliance placed upon the information provided by Datanet is the sole responsibility and strictly at the user's risk.
9. In no event will Datanet be liable for any damages (including, without limitation, damages for loss of business projects, or loss of profits) arising in contract, tort or otherwise from the use of or inability to use any of its contents, or from any action taken (or refrained from being taken) as a result of using the analysis or any of its contents. Datanet its directors, owners, editors, officials, employees, distributor and agents or any associate will not be liable for any errors in the information contained or any consequences arising from the use of the contents of the provided information/analysis.
10. If any provision of these terms and conditions is held invalid or illegal or unenforceable for any reason by any court of competent jurisdiction, such provision shall be severed and the remainder of provisions of the terms and conditions shall continue in full force and effect as if the Term of Use had been executed with the invalid, illegal or unenforceable provision eliminated.
11. If there are any discrepancies in the information provided, please bring it to attention of Datanet for suitable rectification measures.

**Buy Online This Complete Book At
Datanet India eBooks Store**

www.indiastatpublications.com

or go directly at

**[http://www.indiastatpublications.com/
Assembly_factbook/Rajasthan/Bikaner/ Anupgarh](http://www.indiastatpublications.com/Assembly_factbook/Rajasthan/Bikaner/Anupgarh)**

 **indiastat**elections

ISBN : 978-93-87267-22-0



9 789387 267220