



Rajasthan

Assembly Factbook™

Pindwara Abu Assembly Constituency



Key Electoral Data of Pindwara Abu
Assembly Constituency (Vidhan Sabha)

Rajasthan

Assembly Factbook™

Pindwara Abu Assembly Constituency



Pindwara Abu Vidhan Sabha

Editor & Director

Dr. R.K. Thukral

Research Editor

Dr. Shafeeq Rahman

Compiled, Researched and Published by Datanet India Pvt. Ltd.

D-100, 1st Floor,

Okhla Industrial Area, Phase-I,
New Delhi- 110020.

Ph.: 91-11- 43580781-84

Email : support@indiastatpublications.com

Website : www.indiastatelections.com

Online Book Store :

www.indiastatpublications.com

Report No. : AFB/RJ-147-0125

ISBN : 978-93-87293-61-8

First Edition : January, 2018

Eighth Updated Edition : January, 2025

Price : Rs. 11500/-

US\$ 310

© Datanet India Pvt. Ltd.

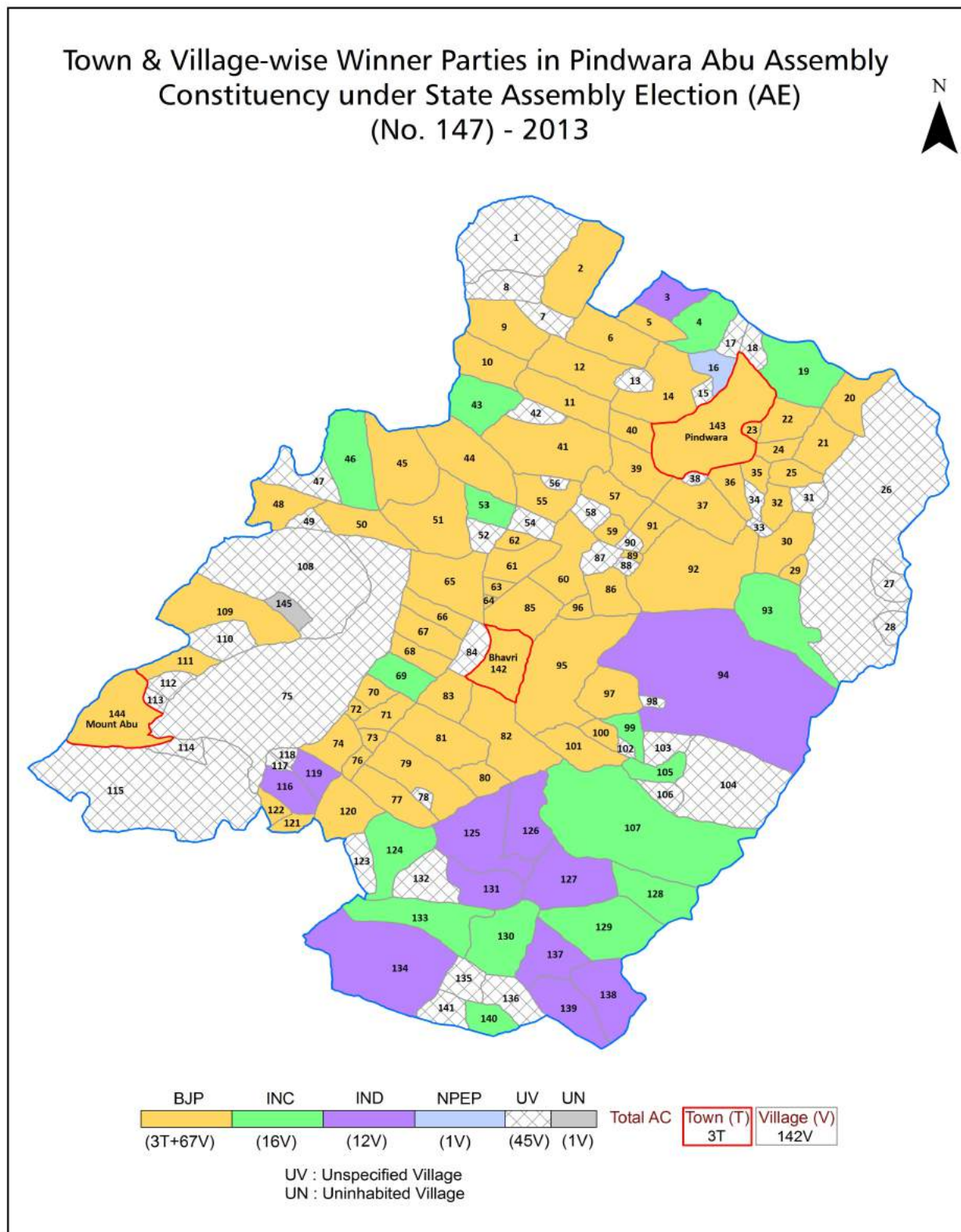
All rights reserved. No part of this book may be reproduced, stored in a retrieval system or transmitted in any form or by any means, mechanical photocopying, photographing, scanning, recording or otherwise without the prior written permission of the publisher. Please refer to Disclaimer at page no. 194 for the use of this publication.

Printed in India

Contents

No.	Particulars	Page No.
	Introduction	
1	Assembly Constituency - (Vidhan Sabha) at a Glance Features of Assembly as per Delimitation Commission of India (2008)	1-2
	Location and Political Maps	
2	Location Map Boundaries of Assembly Constituency - (Vidhan Sabha) in District Boundaries of Assembly Constituency under Parliamentary Constituency - (Lok Sabha) Town & Village-wise Winner Parties- 2024, 2023, 2019, 2018, 2014, 2013, 2009 and 2008	3-11
	Administrative Setup (2011)	
3	District Sub-district Towns Villages Inhabited Villages Uninhabited Villages Village Panchayat Intermediate Panchayat	12-19
	Demographics (2011)	
4	Population Households Rural/Urban Population Towns and Villages by Population Size Sex Ratio (Total & 0-6 Years) Religious Population Social Population Literacy Rate	20-21
	Electoral Features	
5	Important Dates of Last Elections Held Electors by Gender Service Electors Voters Voters Turnout Polling Stations & Average Number of Electors per Polling Station Electors by Age Group Present Elected Representatives	22-27
	Historical Summary Election Results	
6	Vote Share of Major Parties Winning Margin (Number & Percentage) Polarity of Parties Summary Result of Assembly Segment of Parliamentary Elections 2024, 2019, 2014, 2009, 2004 and 1999 Summary Result of Assembly Elections 2023, 2018, 2013, 2008, 2003, 1998, 1993, 1990, 1985, 1980, 1977, 1972, 1967, 1962 and 1957	28-50
	Polling Station Level Election Results	
7	Name and Number of Polling Station 2024, 2023, 2019, 2018, 2014, 2013, 2009 and 2008 Polling Station-wise Electors, Voters & Voters Turnout 2024, 2023, 2019, 2018, 2014, 2013, 2009 and 2008 Polling Station wise Elections Results 2024, 2023, 2019, 2018, 2014, 2013, 2009 and 2008	51-174
	Share of Assembly Constituency	
8	Share of Assembly Constituency - (Vidhan Sabha) in State, District and Parliamentary Constituency - (Lok Sabha)	175
	Socio-Economic Amenities (2011)	
9	Access to Administrative Units Agricultural, Manufacturing and Industrial Commodities Demographic Indicators Education Health & Manpower Drinking Water Supply Sanitation Entertainment and Recreations Infrastructure Power Food Allocation Distribution and Marketing of Agriculture Commodities Infrastructure Transport and Road Infrastructure Communication Banking and Financial Services Land Use Irrigation Source	177-191
10	Abbreviation & Sources	192-193
11	Disclaimer	194

Location & Political Map



Administrative Setup

List of Village Panchayat & Intermediate Panchayat (Block) Name - 2011

Village Name	Village Panchayat Name	Intermediate Panchayat Name
Achalgarh	Oriya	Abu Road
Achpura	Achpura	Pindwara
Adarsh	Doongri	Pindwara
Ajari	Ajari	Pindwara
Amli	Amli	Pindwara
Amthala	Amthala	Abu Road
Apri Khera	Lotana	Pindwara
Arasana	Telpur	Pindwara
Arna	Oriya	Abu Road
Banas	Doongri	Pindwara
Basantgarh	Basantgarh	Pindwara
Bhadaveri	Moras	Pindwara
Bhamriya	Upla Khejra	Abu Road
Bharja	Bharja	Pindwara
Bhimana	Bhimana	Pindwara
Bhoojela	Bharja	Pindwara
Bhoola	Bhoola	Pindwara
Bilar	Jhadoli	Pindwara
Block No. 2	Achpura	Pindwara
Block No.1	Chandela	Abu Road
Bor Umri	Mandwara Deo	Pindwara
Bori Booj	Doytra	Abu Road
Buja	Upla Khejra	Abu Road
Chawarli	Doongri	Pindwara
Cheeniya Band	Moras	Pindwara
Churlikhera	Isra	Pindwara
Deldar	Deldar	Abu Road
Dhanari	Dhanari	Pindwara
Dhandhpura	Peshua	Pindwara

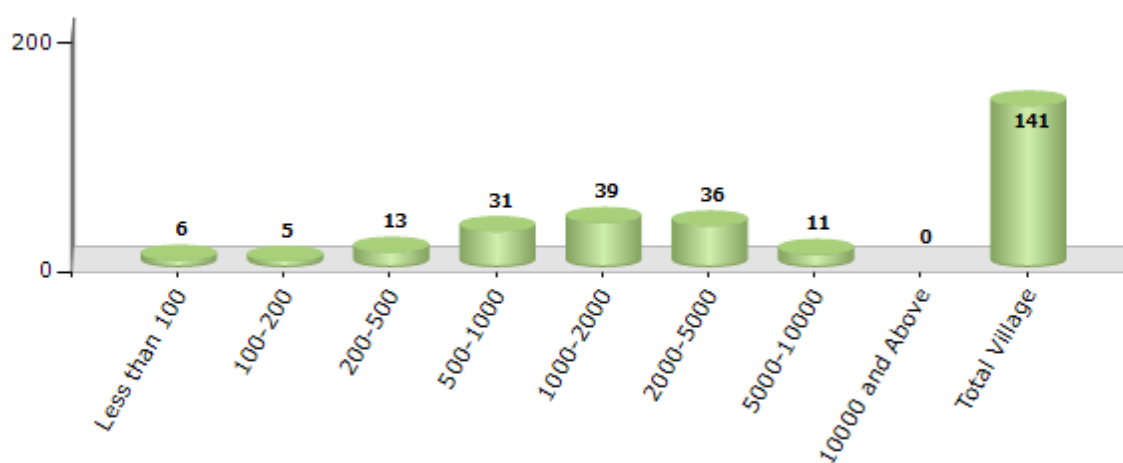
Contd....

Demographic

Number of Villages by Population Size - 2011

Less than 100	100-200	200-500	500-1000	1000-2000	2000-5000	5000-10000	10000 and Above	Total Village
6	5	13	31	39	36	11	0	141

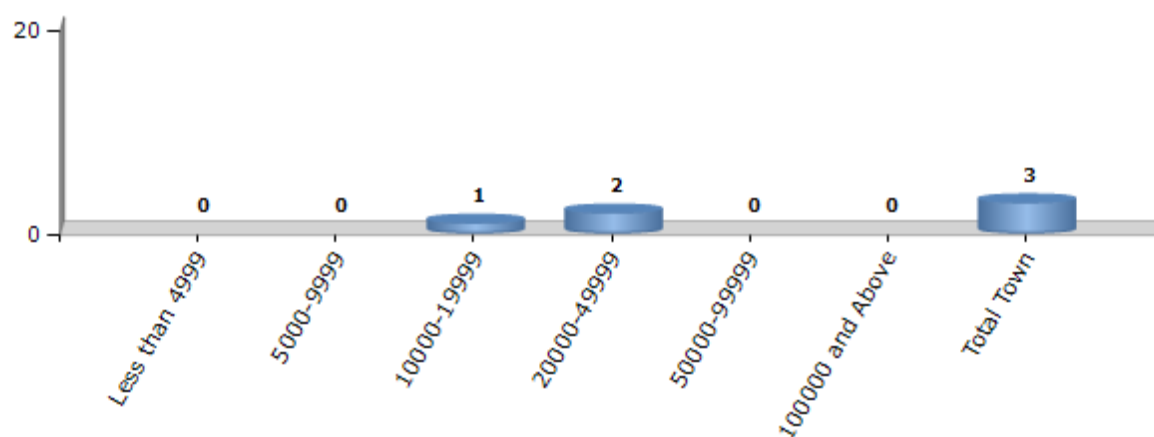
Number of Villages by Population Size - 2011



Number of Towns by Population Size - 2011

Less than 4999	5000-9999	10000-19999	20000-49999	50000-99999	100000 and Above	Total Town
0	0	1	2	0	0	3

Number of Towns by Population Size - 2011

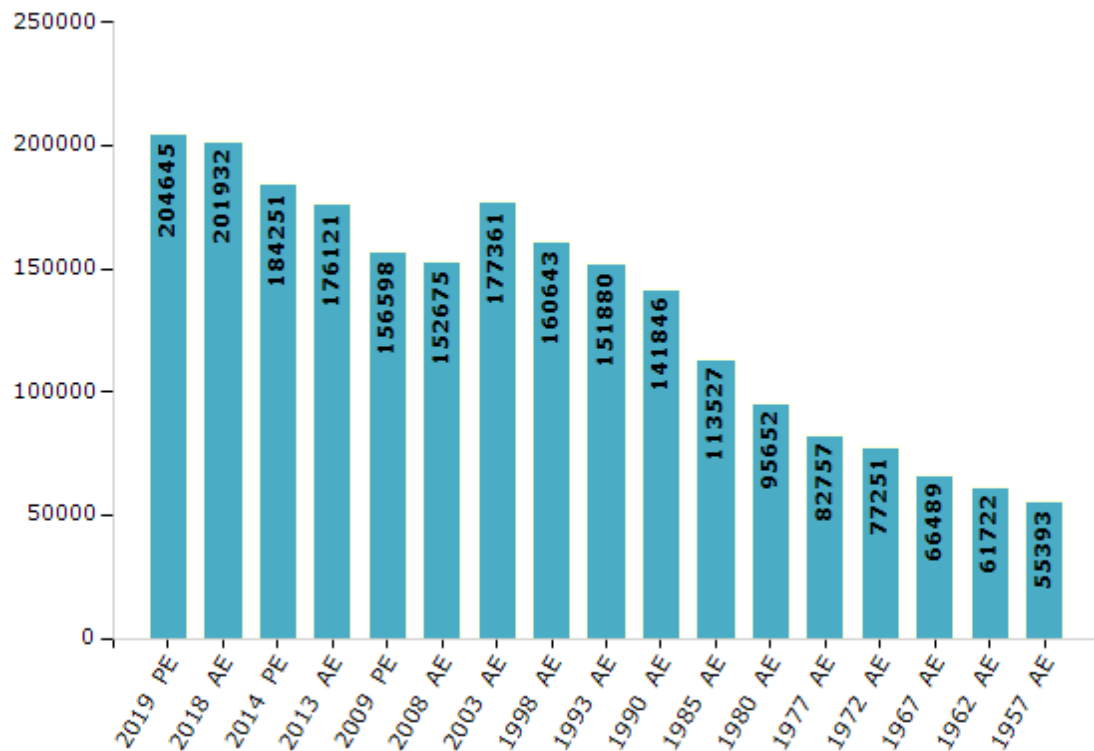


Electoral Features

Electors by Male & Female

Year	Male	Female	Others	Total	Year	Male	Female	Others	Total
2019 PE	106562	98083	0	204645	1993 AE	79620	72260	-	151880
2018 AE	105318	96614	0	201932	1990 AE	74807	67039	-	141846
2014 PE	96804	87447	0	184251	1985 AE	58014	55513	-	113527
2013 AE	92870	83251	0	176121	1980 AE	48156	47496	-	95652
2009 PE	82403	74195	-	156598	1977 AE	41419	41338	-	82757
2008 AE	80097	72578	-	152675	1972 AE	39030	38221	-	77251
2004 PE	-	-	-	-	1967 AE	-	-	-	66489
2003 AE	92269	85092	-	177361	1962 AE	-	-	-	61722
1999 PE	-	-	-	-	1957 AE	-	-	-	55393
1998 AE	84002	76641	-	160643	1952 AE	-	-	-	-

Number of Electors

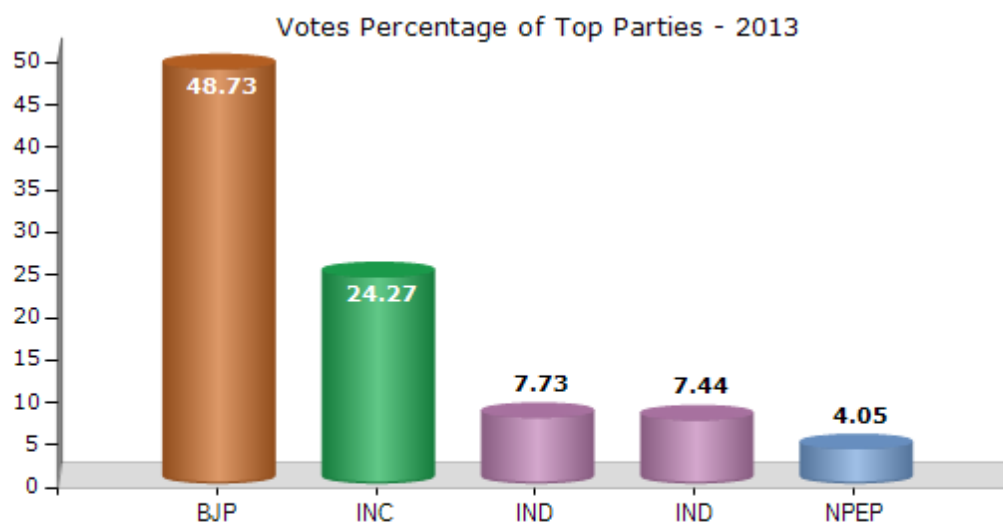


Note : AE : Assembly Election, PE : Assembly Segment of Parliamentary Election

Historical Summary Election Results

Summary Result of Assembly Election - 2013

Candidate Name	Party	Votes	Votes %
Samaram Grasiya	BJP	61453	48.73
Gangaben Girasia	INC	30598	24.27
Kesarmal	IND	9746	7.73
Ramlal	IND	9385	7.44
Nawaram Meena	NPEP	5108	4.05
Dalaram Alias Dalpatram	BSP	2555	2.03
	NOTA	7253	5.75



Polling Station Level Election Results

Number and Name of Polling Stations (PS) (2018)

Number of Polling Stations	Name of Polling Stations	Number of Polling Stations	Name of Polling Stations
1	Adarsh Govt. Senior Secondary School (East Part), Naya Sanwara	22	Govt. Upper Primary Sanskrit School (East Part), Jhadoli
2	Adarsh Govt. Senior Secondary School (West Part), Naya Sanwara	23	Govt. Upper Primary Sanskrit School (West Part), Jhadoli
3	Adarsh Govt. Senior Secondary School (Second Parisar), Naya Sanwara	24	Adarsh Govt. Senior Secondary School, (Left Part) Jhadoli
4	Utkrasht Govt. Upper Primary School, Viroli	25	Adarsh Govt. Senior Secondary School, (West Part) Jhadoli
5	Adarsh Govt. Senior Secondary School, (Right Part) Telpur	26	Govt. Girls Upper Primary School Jhadoli
6	Adarsh Govt. Senior Secondary School, (Left Part) Telpur	27	Govt. Upper Primary School Number-1 (Right Part), Aamali Road Pindwara
7	Utkrasht Govt. Upper Primary School, Dingar	28	Govt. Upper Primary School Number-1 (Left Part), Aamali Road Pindwara
8	Utkrasht Govt. Secondary School Aarasana	29	Govt. Senior Secondary School (South Part), Pindwara
9	Adarsh Govt. Senior Secondary School (East Part), Veerwada	30	Govt. Senior Secondary School (Extra Campus-1 Central Part), Pindwara
10	Adarsh Govt. Senior Secondary School (West Part), Veerwada	31	Govt. Senior Secondary School (Extra Campus-1 North Part), Pindwara
11	Adarsh Govt. Senior Secondary School (Central Part), Veerwada	32	Govt. Upper Primary School Number-2 (BRC Bhawan Right Part), Pindwara
12	Govt. Primary School Veerwadaa	33	Govt. Upper Primary School Number-2 (BRC Bhawan Left Part), Pindwara
13	Utkrasht Govt. Upper Primary School Kotda	34	Govt. Senior Secondary School (Extra Campus-1 South Part), Pindwara
14	Adarsh Govt. Senior Secondary School, (Right Part), Sivera	35	Govt. Senior Secondary School (North Part), Pindwara
15	Adarsh Govt. Senior Secondary School, (Left Part), Sivera	36	Govt. Girls Senior Secondary School (North Part), Pindwara
16	Utkrasht Govt. Upper Primary School, Rajpura	37	Govt. Girls Senior Secondary School (South Part), Pindwara
17	Govt. Upper Primary School, Muri	38	Govt. Upper Primary School, Bus Stand (North Part) Pindwara
18	Adarsh Govt. Senior Secondary School (Right Part), Undra	39	Govt. Upper Primary School, Bus Stand (South Part) Pindwara
19	Adarsh Govt. Senior Secondary School (Left Part), Undra	40	Adarsh Government Senior Secondary School, Aamli
20	Utkrasht Govt. Upper Primary School, Kerlapadar	41	Government Upper Primary School, Talabfali Aamli
21	Adarsh Govt. Senior Secondary School, (Right Part) Jhadoli	42	Government Upper Primary School Sadalva

Contd....

Polling Station Level Election Results

Polling Station-wise Votes Secured by Overall Top Five Parties in Pindwara Abu Assembly in Assembly Election (AE) under Jalore Parliamentary Constituency in Rajasthan (2018)

Number of Polling Station	Winner - Sama Ram Grasiya (BJP)	Runner-up - Lala Ram (INC)	3rd - Magan Lal (SHS)	4th - Gouri Shankar (BTP)	5th - Rataram (IND)	NOTA	Other	Total Votes Secured
36	383	161	102	3	2	14	4	669
37	510	142	118	5	11	20	23	829
38	330	296	42	0	173	11	26	878
39	352	447	32	2	28	10	13	884
40	191	286	198	8	48	48	112	891
41	243	266	84	13	8	41	154	809
42	227	54	6	1	89	8	4	389
43	364	29	214	5	33	34	78	757
44	155	223	75	11	73	26	81	644
45	296	106	84	10	23	28	51	598
46	485	48	36	11	17	18	20	635
47	275	35	9	8	6	11	15	359
48	277	47	37	4	21	17	13	416
49	455	38	20	13	35	33	43	637
50	280	183	202	12	14	52	68	811
51	497	23	119	19	22	14	59	753
52	116	29	271	12	11	46	53	538
53	195	30	119	6	10	64	169	593
54	271	89	379	15	6	35	89	884
55	322	106	239	16	14	67	82	846
56	458	173	54	15	17	23	63	803
57	515	125	29	18	13	48	35	783
58	442	143	42	33	9	26	45	740
59	309	121	0	2	0	5	16	453
60	321	137	0	2	3	5	26	494
61	323	43	220	2	2	2	10	602
62	390	275	43	4	10	13	22	757
63	517	98	52	10	118	6	17	818
64	410	252	123	6	20	38	49	898
65	218	77	122	6	10	10	17	460
66	139	112	172	8	4	23	38	496
67	416	227	27	6	16	8	21	721
68	409	54	53	3	6	2	4	531
69	217	220	25	4	41	13	34	554
70	498	215	9	9	90	11	15	847

Contd....

Polling Station Level Election Results

Winner, Runner-up and 3rd Party Position & Winning Margin According to Polling Stations in Pindwara Abu Assembly in Assembly Election (AE) under Jalore Parliamentary Constituency in Rajasthan (2018)

Polling Station Number	Winner Party	Winner Votes (%)	Runner-up Party	Runner-up Votes (%)	Winning Margin Votes (%)	Third Party	Third Party Votes (%)	Other Votes (%)
71	BJP	415 (76.85)	INC	57 (10.56)	358 (66.29)	SHS	47 (8.7)	21 (3.89)
72	BJP	399 (69.27)	INC	108 (18.75)	291 (50.52)	IND (R)	22 (3.82)	47 (8.16)
73	INC	330 (46.22)	BJP	263 (36.83)	67 (9.39)	BSP	36 (5.04)	85 (11.9)
74	BJP	417 (72.52)	INC	78 (13.57)	339 (58.95)	IND (R)	25 (4.35)	55 (9.57)
75	BJP	312 (47.06)	INC	300 (45.25)	12 (1.81)	IND (R)	15 (2.26)	36 (5.43)
76	BJP	454 (86.48)	INC	23 (4.38)	431 (82.1)	BSP	10 (1.9)	38 (7.24)
77	BJP	443 (81.58)	INC	47 (8.66)	396 (72.92)	IND (R)	24 (4.42)	29 (5.34)
78	BJP	407 (84.62)	INC	47 (9.77)	360 (74.85)	IND (R)	6 (1.25)	21 (4.37)
79	BJP	226 (48.09)	INC	185 (39.36)	41 (8.73)	IND (R)	8 (1.7)	51 (10.85)
80	INC	258 (43.14)	BJP	227 (37.96)	31 (5.18)	IND (R)	57 (9.53)	56 (9.36)
81	BJP	301 (69.52)	INC	91 (21.02)	210 (48.5)	IND (R)	18 (4.16)	23 (5.31)
82	BJP	278 (39.71)	INC	253 (36.14)	25 (3.57)	IND (KRM)	69 (9.86)	100 (14.29)
83	BJP	435 (47.03)	INC	386 (41.73)	49 (5.3)	BTP	28 (3.03)	76 (8.22)
84	INC	353 (65.98)	BJP	108 (20.19)	245 (45.79)	IND (RK)	15 (2.8)	59 (11.03)
85	BJP	555 (75)	INC	131 (17.7)	424 (57.3)	BTP	11 (1.49)	43 (5.81)
86	BJP	434 (70.11)	INC	98 (15.83)	336 (54.28)	IND (R)	37 (5.98)	50 (8.08)
87	BJP	308 (49.36)	INC	175 (28.04)	133 (21.32)	IND (R)	84 (13.46)	57 (9.13)
88	BJP	230 (64.07)	INC	82 (22.84)	148 (41.23)	SHS	36 (10.03)	11 (3.06)
89	BJP	309 (57.22)	INC	152 (28.15)	157 (29.07)	BSP	22 (4.07)	57 (10.56)
90	BJP	232 (34.37)	INC	199 (29.48)	33 (4.89)	SHS	162 (24)	82 (12.15)
91	BJP	325 (57.62)	INC	111 (19.68)	214 (37.94)	SHS	47 (8.33)	81 (14.36)
92	BJP	269 (52.85)	INC	112 (22)	157 (30.85)	SHS	28 (5.5)	100 (19.65)
93	BJP	193 (54.21)	INC	57 (16.01)	136 (38.2)	BTP	47 (13.2)	59 (16.57)
94	BJP	121 (29.3)	INC	119 (28.81)	2 (0.49)	BTP	91 (22.03)	82 (19.85)
95	BJP	204 (39.61)	INC	185 (35.92)	19 (3.69)	SHS	29 (5.63)	97 (18.83)
96	BJP	279 (47.21)	INC	211 (35.7)	68 (11.51)	BTP	31 (5.25)	70 (11.84)
97	BJP	352 (47.63)	INC	260 (35.18)	92 (12.45)	SHS	20 (2.71)	107 (14.48)
98	BJP	529 (60.53)	INC	212 (24.26)	317 (36.27)	BTP	28 (3.2)	105 (12.01)
99	BJP	346 (46.63)	INC	302 (40.7)	44 (5.93)	BTP	23 (3.1)	71 (9.57)
100	BJP	402 (53.82)	INC	180 (24.1)	222 (29.72)	SHS	41 (5.49)	124 (16.6)
101	BJP	544 (66.59)	INC	119 (14.57)	425 (52.02)	SHS	29 (3.55)	125 (15.3)
102	INC	337 (63.58)	BJP	156 (29.43)	181 (34.15)	IND (RK)	9 (1.7)	28 (5.28)
103	BJP	537 (77.16)	INC	117 (16.81)	420 (60.35)	BTP	7 (1.01)	35 (5.03)
104	BJP	445 (74.54)	INC	124 (20.77)	321 (53.77)	IND (R)	9 (1.51)	19 (3.18)
105	BJP	357 (64.67)	INC	184 (33.33)	173 (31.34)	BTP	3 (0.54)	8 (1.45)

Contd....

Socio-Economic Amenities - Rural

Access to Education Facilities

Particulars	Number of Village (% of Population)				
	Available	Not Available	If Not Available (Distance of Nearest Facility)		
			A	B	C
Govt. Primary School	117 (98)	24 (2)	7 (0)	3 (0)	0 (0)
Private Primary School	46 (54)	95 (46)	6 (1)	3 (0)	4 (0)
Govt. Middle School	71 (81)	70 (19)	26 (7)	15 (5)	9 (2)
Private Middle School	34 (43)	107 (57)	4 (0)	5 (1)	2 (0)
Govt. Secondary School	47 (65)	94 (35)	46 (18)	20 (8)	14 (4)
Private Secondary School	23 (36)	118 (64)	0 (0)	4 (1)	1 (0)
Govt. Senior Secondary School	10 (19)	131 (81)	26 (13)	40 (23)	49 (22)
Private Senior Secondary School	13 (22)	128 (78)	1 (1)	1 (0)	2 (2)
Govt. Arts and Science Degree College	0 (0)	141 (100)	3 (4)	25 (19)	101 (65)
Private Arts and Science Degree College	0 (0)	141 (100)	2 (3)	2 (2)	8 (7)
Govt. Engineering College	0 (0)	141 (100)	0 (0)	0 (0)	46 (37)
Private Engineering College	0 (0)	141 (100)	1 (0)	5 (5)	89 (58)
Govt. Medicine College	0 (0)	141 (100)	0 (0)	0 (0)	141 (100)
Private Medicine College	0 (0)	141 (100)	0 (0)	0 (0)	0 (0)
Govt. Management Institute	0 (0)	141 (100)	1 (0)	1 (2)	96 (71)
Private Management Institute	0 (0)	141 (100)	0 (0)	2 (1)	41 (26)
Govt. Polytechnic	0 (0)	141 (100)	0 (0)	1 (2)	126 (90)
Private Polytechnic	0 (0)	141 (100)	0 (0)	0 (0)	14 (9)
Govt. Vocational Training School/ITI	0 (0)	141 (100)	5 (7)	26 (20)	106 (71)
Private Vocational Training School/ITI	0 (0)	141 (100)	0 (0)	1 (1)	3 (2)
Govt. Non Formal Training Centre	0 (0)	141 (100)	4 (7)	22 (18)	114 (74)
Private Non Formal Training Centre	0 (0)	141 (100)	0 (0)	0 (0)	1 (1)
Govt. School For Disabled	0 (0)	141 (100)	0 (0)	0 (0)	5 (3)
Private School For Disabled	0 (0)	141 (100)	0 (0)	1 (2)	135 (95)
Government Others	0 (0)	141 (100)	0 (0)	0 (0)	0 (0)
Private Others	0 (0)	141 (100)	0 (0)	0 (0)	0 (0)

Note : Distance A : Less than 5 km; B : Between 5-10 km; C : 10+ km.; Source : Data Analysis is based on 2011 Census.

DISCLAIMER

The Terms of Use and Disclaimer of Datanet India Private Limited (hereinafter referred to as "Datanet") for use of this analysis report of **Pindwara Abu Assembly Constituency (Pindwara Abu Vidhan Sabha)** :-

1. **Assembly Factbook™** is a Registered Trade Mark owned by Datanet.
2. All the maps are sketched and graphical representation only and have not been drawn to the scale and also not to represent the actual geographical area or boundary of the unit.
3. The data for the aforesaid analysis is based on authentic sources and has been culled from the various publications of Census, CSO and NSSO for district and block level data, various central and state government departments, Central & State Elections Commissions and the concerned Returning Officers' releases, Electoral Rolls, Election results and allied publications, internal assessment, surveys, estimates and analysis. Therefore, certain adjustment of data at micro level may have been done to arrive closer to the macro data.
4. Data have been provided on an "As Is" and "As AVAILABLE" basis
5. The colours shown in the maps or diagram and charts of a particular party, alliance or AC are indicative and do not represent them.
6. This publication which includes maps, sheets, graphs and data would be the property under copyright of Datanet only. The user may use these for its internal study, analysis and research purposes. It's public display, re-selling or any commercial uses by the user are not allowed.
7. Datanet has taken due care and caution in compilation and processing of data and allied information, but does not guarantee the accuracy, adequacy or completeness of any information/analysis and will be not responsible for any errors or omissions or for the results obtained from the use of such information/analysis.
8. All the contents for the publication have been culled from various authentic sources and Datanet reasonably believes such sources to be reliable, but does not make any representations, express or implied as to the accuracy or fitness of use of such information. The information or contents of the information/analysis do not constitute advice and should not be relied upon in making (or refraining from making) any decision. Any reliance placed upon the information provided by Datanet is the sole responsibility and strictly at the user's risk.
9. In no event will Datanet be liable for any damages (including, without limitation, damages for loss of business projects, or loss of profits) arising in contract, tort or otherwise from the use of or inability to use any of its contents, or from any action taken (or refrained from being taken) as a result of using the analysis or any of its contents. Datanet its directors, owners, editors, officials, employees, distributor and agents or any associate will not be liable for any errors in the information contained or any consequences arising from the use of the contents of the provided information/analysis.
10. If any provision of these terms and conditions is held invalid or illegal or unenforceable for any reason by any court of competent jurisdiction, such provision shall be severed and the remainder of provisions of the terms and conditions shall continue in full force and effect as if the Term of Use had been executed with the invalid, illegal or unenforceable provision eliminated.
11. If there are any discrepancies in the information provided, please bring it to attention of Datanet for suitable rectification measures.

**Buy Online This Complete Book At
Indiastat Publication Book Store**

www.indiastatpublications.com

or go directly at

**[http://www.indiastatpublications.com/
Assembly_factbook/Rajasthan/Jalore/ Pindwara_Abu](http://www.indiastatpublications.com/Assembly_factbook/Rajasthan/Jalore/Pindwara_Abu)**

 **india**stat**elections**

ISBN : 978-93-87293-61-8



9 789387 293618