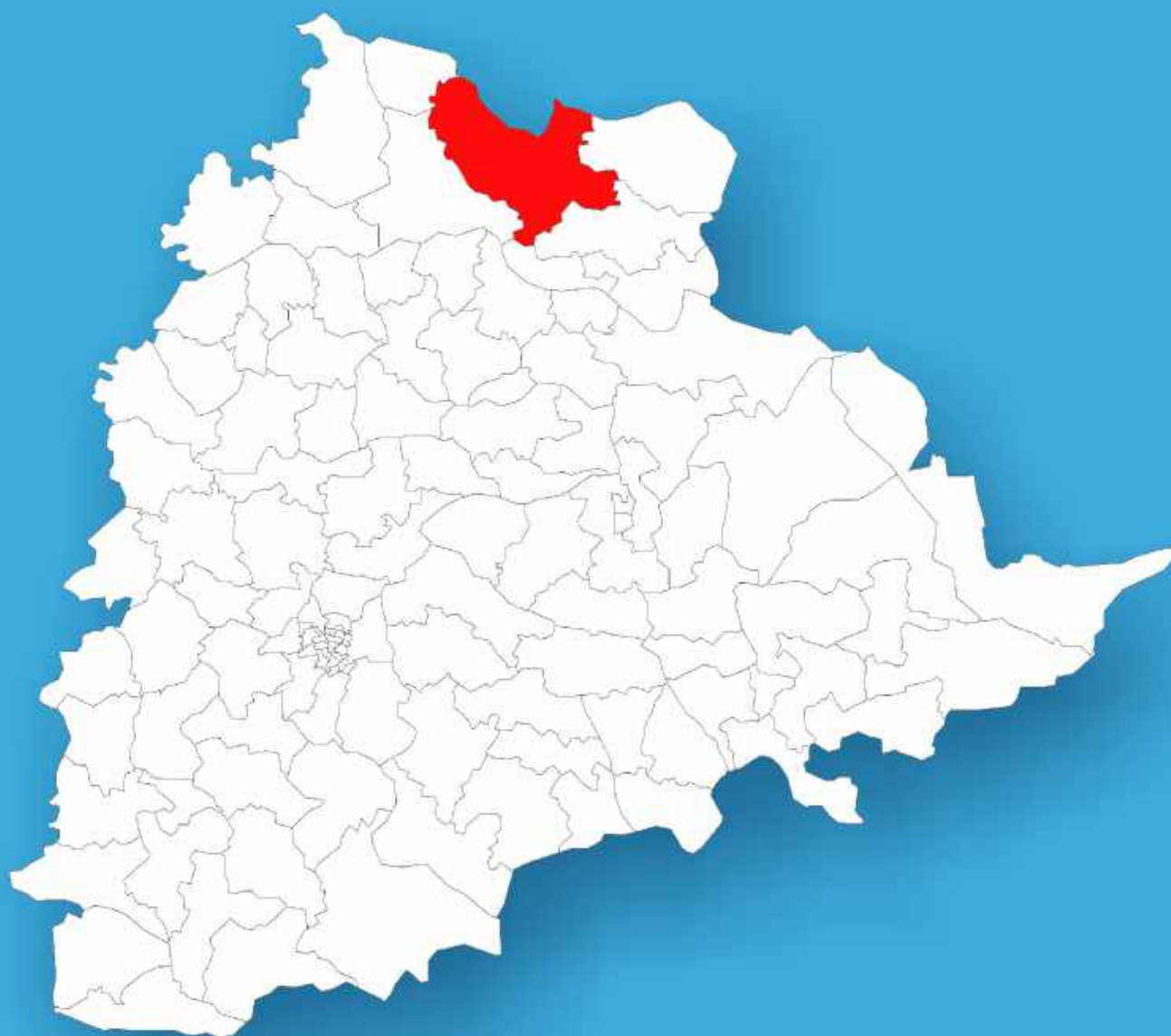




Telangana

Assembly Factbook™

Asifabad Assembly Constituency



Key Electoral Data of Asifabad
Assembly Constituency (Vidhan Sabha)

Telangana

Assembly Factbook™

Asifabad Assembly Constituency



Asifabad Vidhan Sabha

Editor & Director

Dr. R.K. Thukral

Research Editor

Dr. Shafeeq Rahman

**Compiled, Researched and Published by
Datanet India Pvt. Ltd.**

D-100, 1st Floor,

Okhla Industrial Area, Phase-I,

New Delhi- 110020.

Ph.: 91-11- 43580781-84

Email : support@indiastatpublications.com

Website : www.indiastatelections.com

Online Book Store :

www.indiastatpublications.com

Report No. : AFB/TS-005-0125

ISBN : 978-93-6219-533-3

First Edition : January, 2018

Eighth Updated Edition : January, 2025

Price : Rs.11500/-

US\$ 310

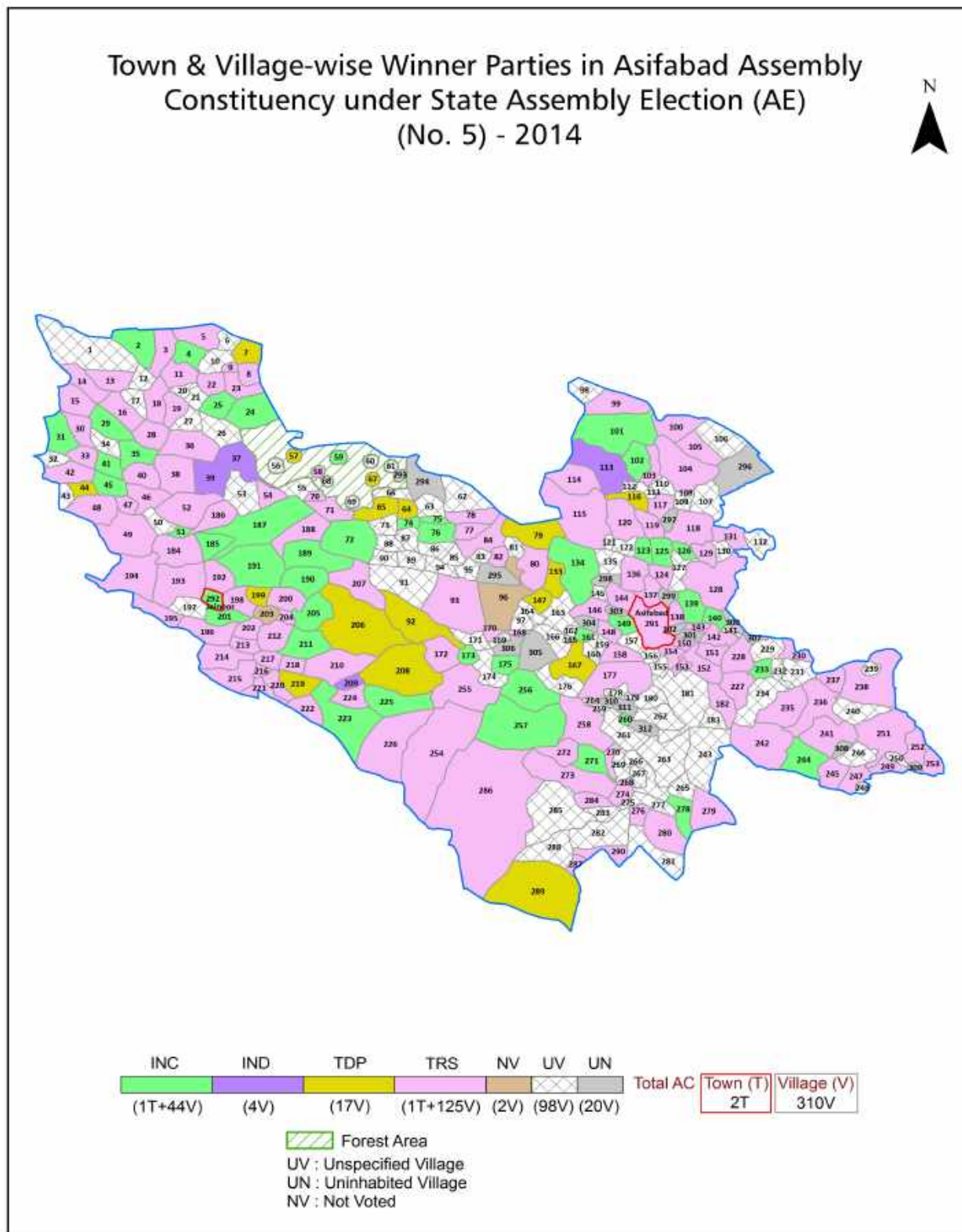
© Datanet India Pvt. Ltd.

All rights reserved. No part of this book may be reproduced, stored in a retrieval system or transmitted in any form or by any means, mechanical photocopying, photographing, scanning, recording or otherwise without the prior written permission of the publisher. Please refer to Disclaimer at page no. 239 for the use of this publication.

Printed in India

No.	Particulars	Page No.
	Introduction	
1	Assembly Constituency - (Vidhan Sabha) at a Glance Features of Assembly as per Delimitation Commission of India (2008)	1-2
	Location and Political Maps	
2	Location Map Boundaries of Assembly Constituency - (Vidhan Sabha) in District Boundaries of Assembly Constituency under Parliamentary Constituency - (Lok Sabha) Town & Village-wise Winner Parties- 2024-PE, 2023-AE, 2019-PE, 2018-AE, 2014-PE, 2014-AE, 2009-PE and 2009-AE	3-11
	Administrative Setup (2011)	
3	District Sub-district Towns Villages Inhabited Villages Uninhabited Villages Village Panchayat Intermediate Panchayat	12-26
	Demographics (2011)	
4	Population Households Rural/Urban Population Towns and Villages by Population Size Sex Ratio (Total & 0-6 Years) Religious Population Social Population Literacy Rate	27-28
	Electoral Features	
5	Important Dates of Last Elections Held Electors by Gender Service Electors Voters Voters Turnout Polling Stations & Average Number of Electors per Polling Station Electors by Age Group Present Elected Representatives	29-34
	Historical Summary Election Results	
6	Vote Share of Major Parties Winning Margin (Number & Percentage) Polarity of Parties Summary Result of Assembly Segment of Parliamentary Election 2024, 2019, 2014, 2009, 2004 and 1999 Summary Result of Assembly Elections 2023, 2018, 2014, 2009, 2004, 1999, 1994, 1989, 1985, 1983, 1978, 1972, 1967, 1962 and 1957	35-57
	Polling Station Level Election Results	
7	Name and Number of Polling Station 2024-PE, 2023-AE, 2019-PE, 2018-AE, 2014-PE, 2014-AE, 2009-PE and 2009-AE Polling Station-wise Electors, Voters & Voters Turnout 2024-PE, 2023-AE, 2019-PE, 2018-AE, 2014-PE, 2014-AE, 2009-PE and 2009-AE Polling Station wise Elections Results 2024-PE, 2023-AE, 2019-PE, 2018-AE, 2014-PE, 2014-AE, 2009-PE and 2009-AE	58-219
	Share of Assembly Constituency	
8	Share of Assembly Constituency - (Vidhan Sabha) in State, District and Parliamentary Constituency - (Lok Sabha)	220
	Socio-Economic Amenities (2011)	
9	Access to Administrative Units Agricultural, Manufacturing and Industrial Commodities Demographic Indicators Education Health & Manpower Drinking Water Supply Sanitation Entertainment and Recreations Infrastructure Power Food Allocation Distribution and Marketing of Agriculture Commodities Infrastructure Transport and Road Infrastructure Communication Banking and Financial Services Land Use Irrigation Source	222-236
10	Abbreviation & Sources	237-238
11	Disclaimer	239

Location & Political Map



Administrative Setup

List of Village Panchayat & Intermediate Panchayat (Block) Name - 2011

Village Name	Village Panchayat Name	Intermediate Panchayat Name
Ada	Ada	Asifabad
Ada - Dasnapur	Ada Dasnapur	Asifabad
Addaghat	Asifabad	Asifabad
Addesar	Addesar	Jainoor
Ademeyon	Gadi Guda	Narnoor
Agarwada	Khairi	Kerameri
Akini	Kalan	Wankdi
Anarpalle	Karanjiwada	Kerameri
Ankusapur	Babapur	Asifabad
Anthapur	Anthapur	Kerameri
Appepalle	Routsankepalle	Asifabad
Areguda	Devaiguda	Tiryani
Arjuni	Arjuni	Narnoor
Arli	Kalan	Wankdi
Ashapalle	Ashapalle	Jainoor
Babapur	Babapur	Asifabad
Babejheri	Kerameri	Kerameri
Babjhari	Babjhari	Narnoor
Babjipet	Pangdi	Sirpur
Balahanpur	Mowad	Asifabad
Balanpur	Nagalkonda	Narnoor
Balegaon	Thumpalli	Asifabad
Bambara	Bambara	Wankdi
Bendera	Bendera	Wankdi
Bheemangondi	Goyagaon	Kerameri
Bheemapur	Mankapur	Tiryani
Bheempur	Bheempur	Narnoor
Bholepathur	Anthapur	Kerameri
Bhurnur	Sirpur - U	Sirpur

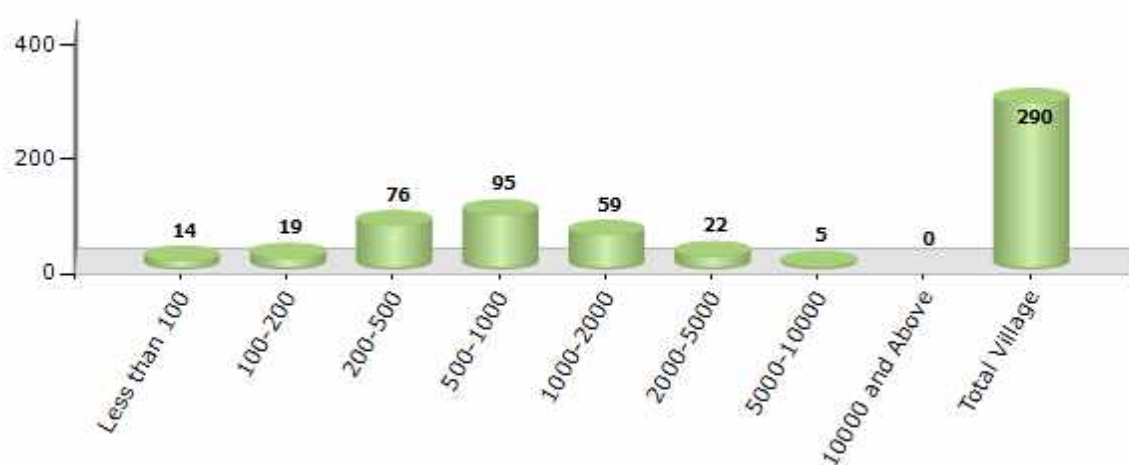
Contd....

Demographics

Number of Villages by Population Size - 2011

Less than 100	100-200	200-500	500-1000	1000-2000	2000-5000	5000-10000	10000 and Above	Total Village
14	19	76	95	59	22	5	0	290

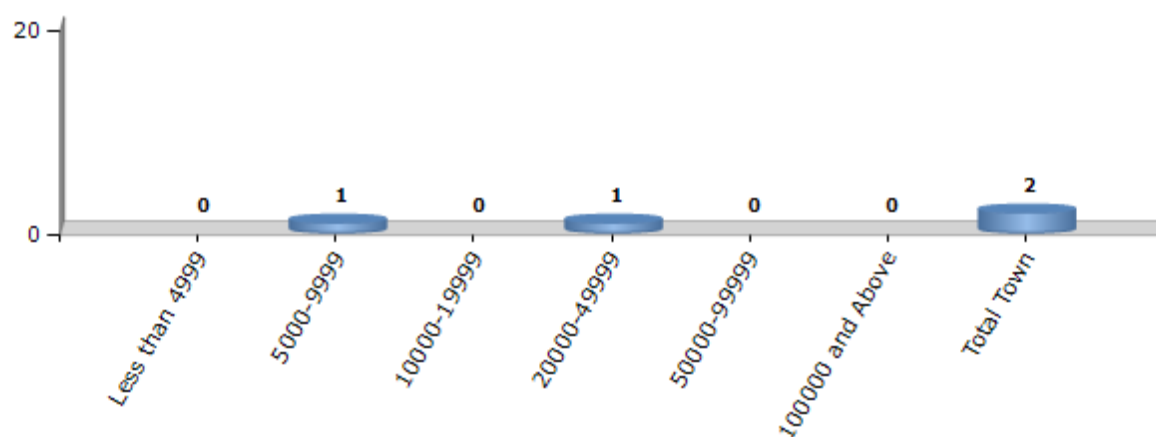
Number of Villages by Population Size - 2011



Number of Towns by Population Size - 2011

Less than 4999	5000-9999	10000-19999	20000-49999	50000-99999	100000 and Above	Total Town
0	1	0	1	0	0	2

Number of Towns by Population Size - 2011



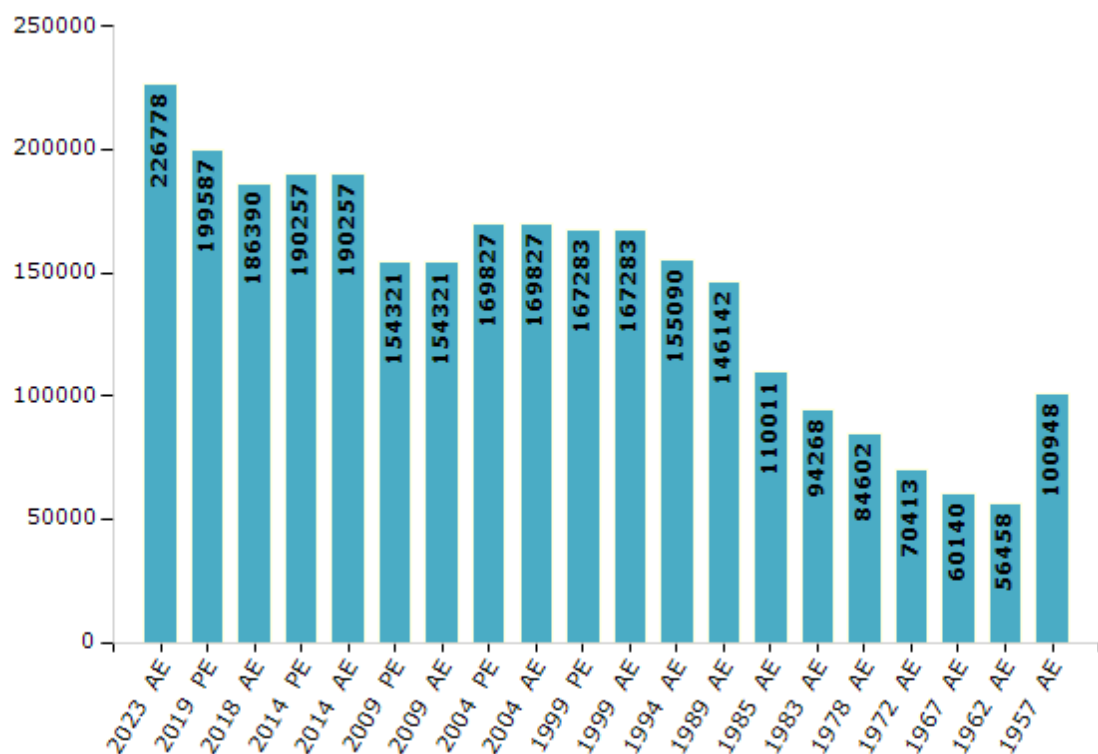
Electoral Features

Electors by Male & Female

Year	Male	Female	Others	Total
2023 AE	113011	113750	17	226778
2019 PE	99712	99866	9	199587
2018 AE	93615	92731	44	186390
2014 PE	95369	94850	38	190257
2014 AE	95369	94850	38	190257
2009 PE	76988	77333	-	154321
2009 AE	76988	77333	-	154321
2004 PE	85400	84427	-	169827
2004 AE	85400	84427	-	169827
1999 PE	83971	83312	-	167283
1999 AE	83971	83312	-	167283

Year	Male	Female	Others	Total
1994 AE	78780	76310	-	155090
1989 AE	74834	71308	-	146142
1985 AE	55609	54402	-	110011
1983 AE	49673	44595	-	94268
1978 AE	43218	41384	-	84602
1972 AE	35150	35263	-	70413
1967 AE	-	-	-	60140
1962 AE	-	-	-	56458
1957 AE	-	-	-	100948
1955 AE	-	-	-	-

Number of Electors

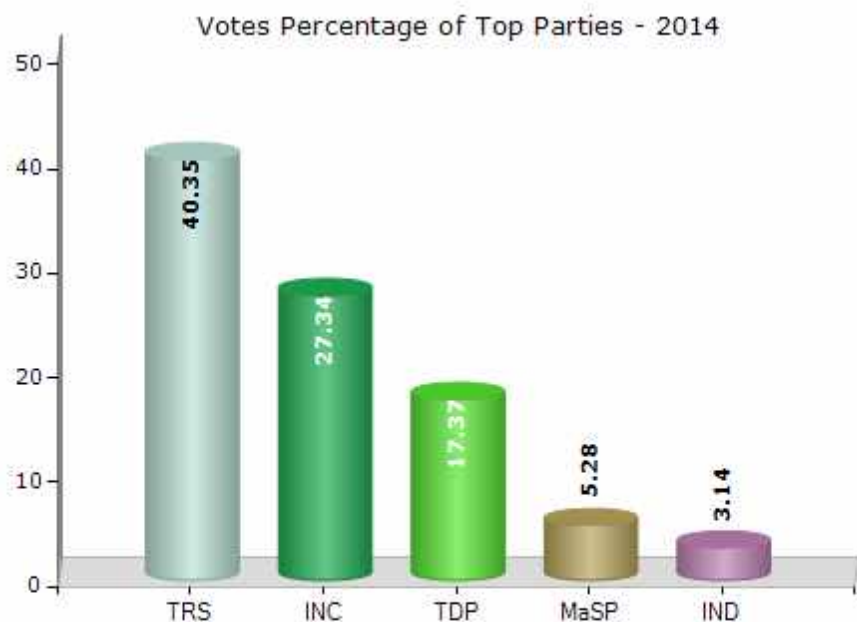


Note : AE : Assembly Election, PE : Assembly Segment of Parliamentary Election

Historical Summary Election Results

Summary Result of Assembly Election - 2014

Candidate Name	Party	Votes	Votes %
Kova Laxmi	TRS	59094	40.35
Atram Sakku	INC	40039	27.34
Marsukola Sarswathi	TDP	25439	17.37
Kotnaka Vijay Kumar	MaSP	7735	5.28
Ade Leelarani	IND	4592	3.14
Kanaka Rambabai	BSP	4022	2.75
Pendram Gopi	IND	1370	0.94
Sidam Arju	GGP	1314	0.9
	NOTA	2833	1.93



Polling Station Level Election Results

Number and Name of Polling Stations (PS) (2018 AE)

Number of Polling Stations	Name of Polling Stations	Number of Polling Stations	Name of Polling Stations
1	Zilla Parishad Secondary School Building, Tadihadapnoor	22	Tribal Welfare Primary School, Chorgaon -G
2	T W Praimari School, Gangapur-G	23	Mandal Parishad Primary School, Lokari K
3	Z.P.Secondary School, Thadihadapnoor	24	Tribal Welfare Ashram Upper Primary School, Arjuni
4	Govt. Upper Primary Ashram School, Jamda H/O Thadihadapnur	25	Mandal Prishad Primary School, Parsuwada-K
5	Mandal Parishad Primary School, Gunjala	26	Tribal Welfare Praimary School Build, Pipiri-G
6	Mandal Parishad Primary School Building Khampoor, Khampoor	27	Zilla Parishad Secondary School, Bheempur
7	Tribal Welfare Praimary School Bethal Guda, Bethal Guda	28	Mandal Parishad Primary School Bheempoor Sc Guda, Bheempoor
8	Mandal Parishad Upper Primary School, Nagalakonda	29	Mandal Parishad Primary School Bldg., Kothapalli H
9	Mandal Parishad Primarieschool (Urdu) Iliyasnagar, Iliyasngar	30	Mandal Parishad Primary School, Malepur, Malepur
10	Tribal Welfare Ashram High School, Mankapur	31	Mandal Parishad Primary School, Sangvi
11	Zpss Narnoor West Build(S W), Narnoor	32	Mandal Prishad Upper Primary School, Lokari -B
12	Zpss Narnoor West Build(S W), Narnoor	33	Mandal Parishad Primary School, Umri
13	Zpss Narnoor West Build(S W), Narnoor	34	Mandal Parishad Primary School, Dhab-K
14	Gram Panchayat Office, Malangi	35	Mandal Prishad Primary School, Dhabha-B
15	Mandal Parishad Primary School, Mahagaon	36	Mandal Parishad Primary School (New Building) Ko, Kolama
16	M.P.Primary School, Gundala-G	37	Govt.Tribal Ashrama High School, Gadiguda
17	T Welfare Praimary School New Build, Kairdatwa	38	Tribal Welfare Primary School, Admiyan
18	Tribal Welfare Primary School, Empalli-G Jaitugd	39	Tribal Welfare Primary School, Parswada-B
19	Tribal Welfare Primary School, Kadki - G	40	Tribal Welfare Primary School, Kottapalli-G
20	Tribal Welfare Primary School, Babejhari	41	Tribal Welfare Primary School, Kunikasa - G
21	Mandal Parishad Primary School, Sungapur	42	Tribal Welfare Primary School, Ruppapur

Contd....

Polling Station Level Election Results

Polling Station-wise Votes Secured by Overall Top Five Parties in Asifabad Assembly in Assembly Election (AE) under Adilabad Parliamentary Constituency in Telangana (2018)

Number of Polling Station	Winner - Athram Sakku (INC)	Runner-up - Kova Laxmi (TRS)	3rd - Azmera Athma Rao (BJP)	4th - Kotnaka Vijay Kumar (TJS)	5th - Ajmera Ramnaik (BSP)	NOTA	Other	Total Votes Secured
36	374	185	105	10	99	9	24	806
37	281	309	10	27	36	17	55	735
38	211	61	4	18	3	8	140	445
39	314	163	37	10	12	3	32	571
40	159	160	6	27	4	6	32	394
41	134	104	19	7	3	10	20	297
42	264	213	7	55	7	3	29	578
43	308	298	14	66	10	3	25	724
44	100	288	7	5	14	19	47	480
45	125	181	15	16	7	17	41	402
46	352	181	79	15	10	13	59	709
47	249	190	10	11	2	0	87	549
48	272	58	4	3	4	1	13	355
49	261	117	7	9	7	4	158	563
50	181	374	10	17	9	0	21	612
51	93	237	0	4	5	3	20	362
52	190	314	28	12	8	4	18	574
53	269	62	3	18	6	3	13	374
54	48	640	149	17	12	4	52	922
55	185	557	30	6	14	3	21	816
56	93	597	15	5	6	5	15	736
57	133	462	18	9	7	9	32	670
58	293	250	6	14	4	6	22	595
59	92	308	1	7	5	11	30	454
60	153	349	5	12	3	9	24	555
61	696	167	3	12	3	22	40	943
62	321	265	2	5	3	15	19	630
63	358	356	4	19	2	9	21	769
64	225	240	6	9	6	10	46	542
65	205	433	7	2	1	3	17	668
66	167	606	20	8	10	3	37	851
67	420	343	11	10	6	12	25	827
68	77	306	13	28	6	2	113	545
69	151	322	17	27	2	9	85	613
70	184	160	3	40	4	10	139	540

Contd....

Polling Station Level Election Results

Winner, Runner-up and 3rd Party Position & Winning Margin According to Polling Stations in Asifabad Assembly in Assembly Election (AE) under Adilabad Parliamentary Constituency in Telangana (2018)

Polling Station Number	Winner Party	Winner Votes (%)	Runner-up Party	Runner-up Votes (%)	Winning Margin Votes (%)	Third Party	Third Party Votes (%)	Other Votes (%)
71	INC	269 (71.35)	TRS	66 (17.51)	203 (53.84)	TJS	11 (2.92)	31 (8.22)
72	BSP	176 (31.71)	TRS	166 (29.91)	10 (1.8)	INC	134 (24.14)	79 (14.23)
73	INC	255 (38.35)	BJP	202 (30.38)	53 (7.97)	TRS	154 (23.16)	54 (8.12)
74	BSP	358 (41.48)	TRS	334 (38.7)	24 (2.78)	BJP	67 (7.76)	104 (12.05)
75	INC	283 (56.26)	TRS	128 (25.45)	155 (30.81)	APOI	21 (4.17)	71 (14.12)
76	INC	161 (47.63)	TRS	135 (39.94)	26 (7.69)	TJS	9 (2.66)	33 (9.76)
77	INC	287 (39.32)	TRS	287 (39.32)	0 (0)	TJS	43 (5.89)	113 (15.48)
78	INC	240 (49.38)	TRS	197 (40.53)	43 (8.85)	BBKD	16 (3.29)	33 (6.79)
79	INC	275 (46.3)	TRS	242 (40.74)	33 (5.56)	TJS	18 (3.03)	59 (9.93)
80	INC	435 (46.52)	TRS	262 (28.02)	173 (18.5)	TJS	52 (5.56)	186 (19.89)
81	INC	437 (50.58)	TRS	355 (41.09)	82 (9.49)	BBKD	13 (1.5)	59 (6.83)
82	TRS	235 (48.35)	INC	216 (44.44)	19 (3.91)	TJS	10 (2.06)	25 (5.14)
83	INC	473 (51.3)	TRS	357 (38.72)	116 (12.58)	BBKD	27 (2.93)	65 (7.05)
84	INC	257 (40.73)	TRS	218 (34.55)	39 (6.18)	TJS	48 (7.61)	108 (17.12)
85	TRS	113 (64.2)	INC	13 (7.39)	100 (56.81)	NPRP	12 (6.82)	38 (21.59)
86	INC	142 (52.21)	TRS	61 (22.43)	81 (29.78)	TJS	25 (9.19)	44 (16.18)
87	TRS	240 (58.97)	INC	107 (26.29)	133 (32.68)	BBKD	14 (3.44)	46 (11.3)
88	TRS	383 (57.25)	INC	220 (32.88)	163 (24.37)	BSP	15 (2.24)	51 (7.62)
89	TRS	368 (47.24)	INC	288 (36.97)	80 (10.27)	BSP	35 (4.49)	88 (11.3)
90	TRS	570 (57.34)	INC	333 (33.5)	237 (23.84)	BSP	18 (1.81)	73 (7.34)
91	TRS	186 (48.06)	INC	110 (28.42)	76 (19.64)	BSP	28 (7.24)	63 (16.28)
92	INC	457 (55.66)	TRS	264 (32.16)	193 (23.5)	TJS	32 (3.9)	68 (8.28)
93	TRS	440 (51.4)	INC	253 (29.56)	187 (21.84)	BJP	38 (4.44)	125 (14.6)
94	TRS	328 (39.09)	INC	178 (21.22)	150 (17.87)	BJP	129 (15.38)	204 (24.31)
95	TRS	319 (34.71)	BJP	233 (25.35)	86 (9.36)	INC	163 (17.74)	204 (22.2)
96	BSP	135 (34.53)	TRS	114 (29.16)	21 (5.37)	INC	64 (16.37)	78 (19.95)
97	TRS	282 (54.44)	INC	156 (30.12)	126 (24.32)	BJP	24 (4.63)	56 (10.81)
98	TRS	139 (32.33)	INC	122 (28.37)	17 (3.96)	APOI	73 (16.98)	96 (22.33)
99	INC	296 (70.64)	TRS	79 (18.85)	217 (51.79)	TJS	20 (4.77)	24 (5.73)
100	INC	104 (59.09)	TRS	62 (35.23)	42 (23.86)	BSP	2 (1.14)	8 (4.55)
101	TRS	302 (44.87)	INC	235 (34.92)	67 (9.95)	APOI	69 (10.25)	67 (9.96)
102	APOI	155 (44.67)	TRS	110 (31.7)	45 (12.97)	INC	13 (3.75)	69 (19.88)
103	INC	196 (41.09)	TRS	182 (38.16)	14 (2.93)	APOI	20 (4.19)	79 (16.56)
104	INC	208 (57.62)	TRS	110 (30.47)	98 (27.15)	TJS	13 (3.6)	30 (8.31)
105	INC	195 (63.73)	TRS	59 (19.28)	136 (44.45)	APOI	13 (4.25)	39 (12.75)

Contd....

Socio-Economic Amenities - Rural

Access to Education Facilities

Particulars	Number of Villages (% of Population)				
	Available	Not Available	If Not Available (Distance of Nearest Facility)		
			A	B	C
Govt. Primary School	275 (98)	15 (2)	3 (0)	1 (0)	1 (0)
Private Primary School	62 (33)	228 (67)	0 (0)	0 (0)	0 (0)
Govt. Middle School	93 (56)	197 (44)	59 (13)	90 (18)	43 (12)
Private Middle School	10 (8)	280 (92)	0 (0)	0 (0)	0 (0)
Govt. Secondary School	39 (32)	251 (68)	53 (15)	123 (34)	75 (19)
Private Secondary School	1 (2)	289 (98)	0 (0)	0 (0)	0 (0)
Govt. Senior Secondary School	9 (12)	281 (88)	36 (13)	109 (36)	130 (37)
Private Senior Secondary School	0 (0)	290 (100)	0 (0)	2 (1)	4 (0)
Govt. Arts and Science Degree College	0 (0)	290 (100)	0 (0)	2 (0)	125 (45)
Private Arts and Science Degree College	1 (2)	289 (98)	6 (4)	41 (17)	115 (32)
Govt. Engineering College	0 (0)	290 (100)	0 (0)	0 (0)	0 (0)
Private Engineering College	0 (0)	290 (100)	0 (0)	0 (0)	290 (100)
Govt. Medicine College	0 (0)	290 (100)	0 (0)	0 (0)	290 (100)
Private Medicine College	0 (0)	290 (100)	0 (0)	0 (0)	0 (0)
Govt. Management Institute	0 (0)	290 (100)	0 (0)	0 (0)	0 (0)
Private Management Institute	0 (0)	290 (100)	0 (0)	0 (0)	290 (100)
Govt. Polytechnic	0 (0)	290 (100)	0 (0)	0 (0)	290 (100)
Private Polytechnic	0 (0)	290 (100)	0 (0)	0 (0)	0 (0)
Govt. Vocational Training School/ITI	0 (0)	290 (100)	0 (0)	1 (0)	288 (100)
Private Vocational Training School/ITI	0 (0)	290 (100)	0 (0)	0 (0)	1 (0)
Govt. Non Formal Training Centre	0 (0)	290 (100)	1 (0)	9 (3)	280 (96)
Private Non Formal Training Centre	0 (0)	290 (100)	0 (0)	0 (0)	0 (0)
Govt. School For Disabled	0 (0)	290 (100)	0 (0)	1 (0)	289 (100)
Private School For Disabled	0 (0)	290 (100)	0 (0)	0 (0)	0 (0)
Government Others	0 (0)	290 (100)	0 (0)	0 (0)	0 (0)
Private Others	0 (0)	290 (100)	0 (0)	0 (0)	0 (0)

Note : Distance A : Less than 5 km; B : Between 5-10 km; C : 10+ km.; Source : Data Analysis is based on 2011 Census.

DISCLAIMER

The Terms of Use and Disclaimer of Datanet India Private Limited (hereinafter referred to as "Datanet") for use of this analysis report of **Asifabad Assembly Constituency (Asifabad Vidhan Sabha)** :-

1. **Assembly Factbook™** is a Registered Trade Mark owned by Datanet.
2. All the maps are sketched and graphical representation only and have not been drawn to the scale and also not to represent the actual geographical area or boundary of the unit.
3. The data for the aforesaid analysis is based on authentic sources and has been culled from the various publications of Census, CSO and NSSO for district and block level data, various central and state government departments, Central & State Elections Commissions and the concerned Returning Officers' releases, Electoral Rolls, Election results and allied publications, internal assessment, surveys, estimates and analysis. Therefore, certain adjustment of data at micro level may have been done to arrive closer to the macro data.
4. Data have been provided on an "As Is" and "As AVAILABLE" basis
5. The colours shown in the maps or diagram and charts of a particular party, alliance or AC are indicative and do not represent them.
6. This publication which includes maps, sheets, graphs and data would be the property under copyright of Datanet only. The user may use these for its internal study, analysis and research purposes. It's public display, re-selling or any commercial uses by the user are not allowed.
7. Datanet has taken due care and caution in compilation and processing of data and allied information, but does not guarantee the accuracy, adequacy or completeness of any information/analysis and will be not responsible for any errors or omissions or for the results obtained from the use of such information/analysis.
8. All the contents for the publication have been culled from various authentic sources and Datanet reasonably believes such sources to be reliable, but does not make any representations, express or implied as to the accuracy or fitness of use of such information. The information or contents of the information/analysis do not constitute advice and should not be relied upon in making (or refraining from making) any decision. Any reliance placed upon the information provided by Datanet is the sole responsibility and strictly at the user's risk.
9. In no event will Datanet be liable for any damages (including, without limitation, damages for loss of business projects, or loss of profits) arising in contract, tort or otherwise from the use of or inability to use any of its contents, or from any action taken (or refrained from being taken) as a result of using the analysis or any of its contents. Datanet its directors, owners, editors, officials, employees, distributor and agents or any associate will not be liable for any errors in the information contained or any consequences arising from the use of the contents of the provided information/analysis.
10. If any provision of these terms and conditions is held invalid or illegal or unenforceable for any reason by any court of competent jurisdiction, such provision shall be severed and the remainder of provisions of the terms and conditions shall continue in full force and effect as if the Term of Use had been executed with the invalid, illegal or unenforceable provision eliminated.
11. If there are any discrepancies in the information provided, please bring it to attention of Datanet for suitable rectification measures.

Buy Online This Complete Book At
Datanet India eBooks Store

www.indiastatpublications.com

or go directly at

[http://www.indiastatpublications.com/
Assembly_factbook/Telangana/Adilabad/ Asifabad](http://www.indiastatpublications.com/Assembly_factbook/Telangana/Adilabad/Asifabad)

 **india**stat**elections**

ISBN : 978-93-6219-533-3



9 789362 195333