



Telangana

Assembly Factbook™

Achampet Assembly Constituency



Key Electoral Data of Achampet
Assembly Constituency (Vidhan Sabha)

Telangana

Assembly Factbook™

Achampet Assembly Constituency



Achampet Vidhan Sabha

Editor & Director

Dr. R.K. Thukral

Research Editor

Dr. Shafeeq Rahman

**Compiled, Researched and Published by
Datanet India Pvt. Ltd.**

D-100, 1st Floor,

Okhla Industrial Area, Phase-I,

New Delhi- 110020.

Ph.: 91-11- 43580781-84

Email : support@indiastatpublications.com

Website : www.indiastatelections.com

Online Book Store :

www.indiastatpublications.com

Report No. : AFB/TS-082-0125

ISBN : 978-93-6219-274-5

First Edition : January, 2018

Eighth Updated Edition : January, 2025

Price : Rs.11500/-

US\$ 310

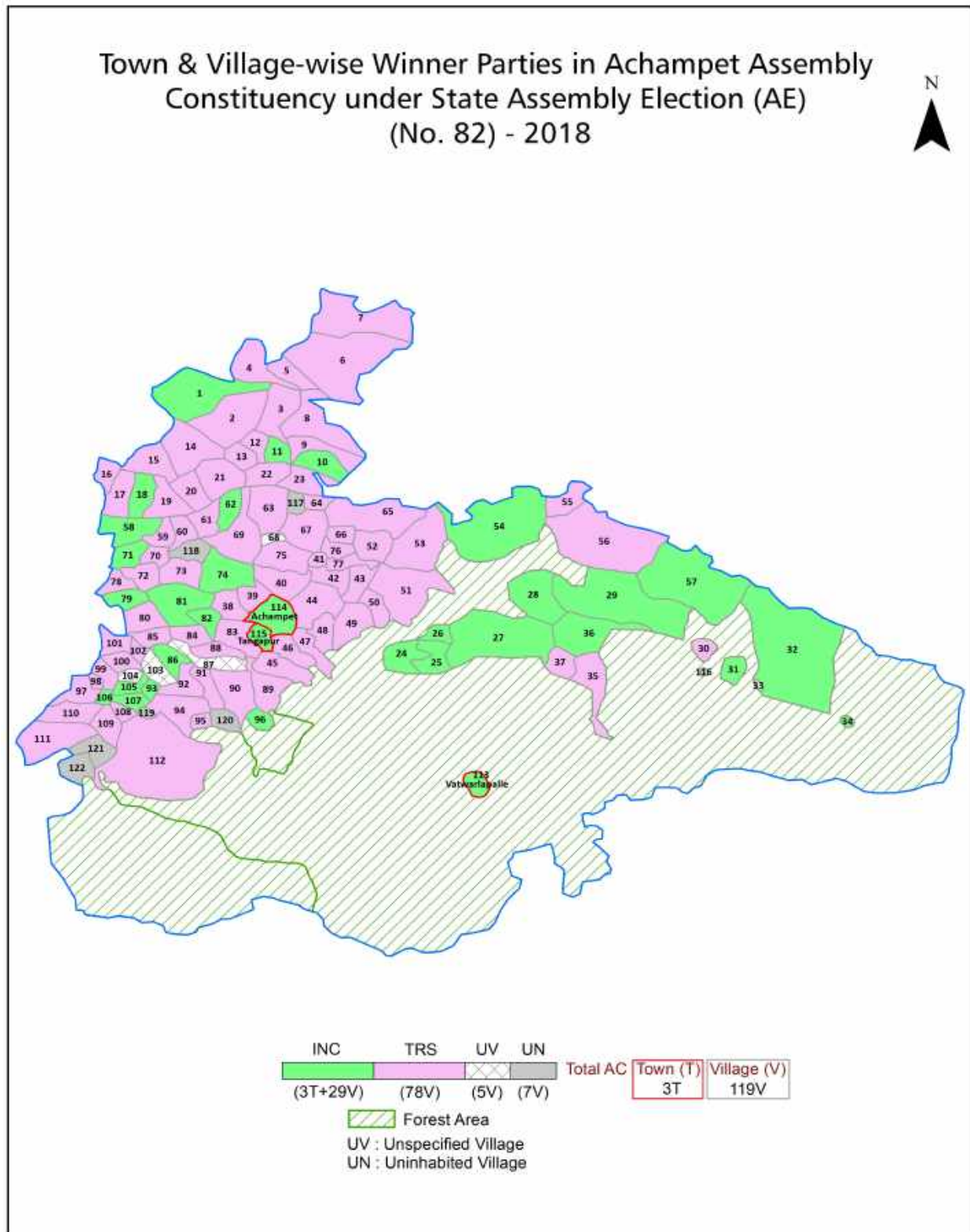
© Datanet India Pvt. Ltd.

All rights reserved. No part of this book may be reproduced, stored in a retrieval system or transmitted in any form or by any means, mechanical photocopying, photographing, scanning, recording or otherwise without the prior written permission of the publisher. Please refer to Disclaimer at page no. 219 for the use of this publication.

Printed in India

| No. | Particulars | Page No. |
|-----|---|----------|
| | Introduction | |
| 1 | Assembly Constituency - (Vidhan Sabha) at a Glance Features of Assembly as per Delimitation Commission of India (2008) | 1-2 |
| | Location and Political Maps | |
| 2 | Location Map Boundaries of Assembly Constituency - (Vidhan Sabha) in District Boundaries of Assembly Constituency under Parliamentary Constituency - (Lok Sabha) Town & Village-wise Winner Parties- 2024-PE, 2023-AE, 2019-PE, 2018-AE, 2014-PE, 2014-AE, 2009-PE and 2009-AE | 3-11 |
| | Administrative Setup (2011) | |
| 3 | District Sub-district Towns Villages Inhabited Villages Uninhabited Villages Village Panchayat Intermediate Panchayat | 12-18 |
| | Demographics (2011) | |
| 4 | Population Households Rural/Urban Population Towns and Villages by Population Size Sex Ratio (Total & 0-6 Years) Religious Population Social Population Literacy Rate | 19-20 |
| | Electoral Features | |
| 5 | Important Dates of Last Elections Held Electors by Gender Service Electors Voters Voters Turnout Polling Stations & Average Number of Electors per Polling Station Electors by Age Group Present Elected Representatives | 21-26 |
| | Historical Summary Election Results | |
| 6 | Vote Share of Major Parties Winning Margin (Number & Percentage) Polarity of Parties Summary Result of Assembly Segment of Parliamentary Election 2024, 2019, 2014, 2009, 2004 and 1999 Summary Result of Assembly Elections 2023, 2018, 2014, 2009, 2004, 1999, 1994, 1989, 1985, 1983, 1978, 1972, 1967 and 1962 | 27-48 |
| | Polling Station Level Election Results | |
| 7 | Name and Number of Polling Station 2024-PE, 2023-AE, 2019-PE, 2018-AE, 2014-PE, 2014-AE, 2009-PE and 2009-AE Polling Station-wise Electors, Voters & Voters Turnout 2024-PE, 2023-AE, 2019-PE, 2018-AE, 2014-PE, 2014-AE, 2009-PE and 2009-AE Polling Station wise Elections Results 2024-PE, 2023-AE, 2019-PE, 2018-AE, 2014-PE, 2014-AE, 2009-PE and 2009-AE | 49-199 |
| | Share of Assembly Constituency | |
| 8 | Share of Assembly Constituency - (Vidhan Sabha) in State, District and Parliamentary Constituency - (Lok Sabha) | 200 |
| | Socio-Economic Amenities (2011) | |
| 9 | Access to Administrative Units Agricultural, Manufacturing and Industrial Commodities Demographic Indicators Education Health & Manpower Drinking Water Supply Sanitation Entertainment and Recreations Infrastructure Power Food Allocation Distribution and Marketing of Agriculture Commodities Infrastructure Transport and Road Infrastructure Communication Banking and Financial Services Land Use Irrigation Source | 202-216 |
| 10 | Abbreviation & Sources | 217-218 |
| 11 | Disclaimer | 219 |

Location & Political Map



Administrative Setup

List of Village Panchayat & Intermediate Panchayat (Block) Name - 2011

| Village Name | Village Panchayat Name | Intermediate Panchayat Name |
|---------------------|---|-----------------------------|
| Ainole | Ainole | Achampet |
| Akkavaram | Akkavaram | Achampet |
| Ambagiri | Ananthavaram | Balmoor |
| Amrabad | Kalvanonopalle, Amrabad, Jangamreddipalle, Kummaronipalle | Amrabad |
| Ananthavaram | Ananthavaram | Balmoor |
| Anbatpalle | Anbatpalle | Lingal |
| Annaram | Annaram | Vangoor |
| Ausalikunta | Ausalikunta | Lingal |
| Ayyavaripalle | Pertivanipalle | Uppununthala |
| Bakaram | Vallabhapur | Lingal |
| Balmoor | Balmoor | Balmoor |
| Billakal | Laxmipalle | Balmoor |
| Bolghatpalle | Bolghatpalle, Rangapur | Achampet |
| Bommenapalle | Bommenapalle | Achampet |
| Bonala | Bonala | Balmoor |
| Brahmanapalle | Chandapur | Achampet |
| Chandapur | Chandapur | Achampet |
| Charakonda | Charakonda | Vangoor |
| Chennaram (P.G) | Chennaram (P.G) | Balmoor |
| Chennaram (Sabak) | Chennaram (P.N) | Achampet |
| Choutapalle | Choutapalle | Achampet |
| Dasarlapalle | Dasarlapalle | Uppununthala |
| Datharam | Jeelugupalle | Lingal |
| Dindichinthalapalle | Dindichinthalapalle | Vangoor |
| Gajra | Gajra | Vangoor |
| Gangupenta | Ippalapalle | Amrabad |
| Gattuthumman | Gattuthumman | Balmoor |
| Ghanapur | Ghanapur | Achampet |
| Godal | Godal | Balmoor |

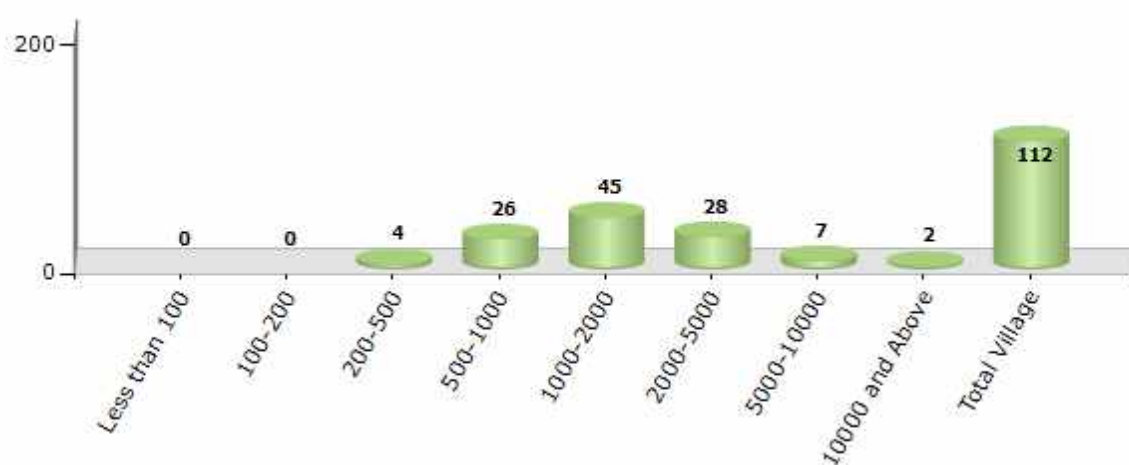
Contd....

Demographics

Number of Villages by Population Size - 2011

| Less than 100 | 100-200 | 200-500 | 500-1000 | 1000-2000 | 2000-5000 | 5000-10000 | 10000 and Above | Total Village |
|---------------|---------|---------|----------|-----------|-----------|------------|-----------------|---------------|
| 0 | 0 | 4 | 26 | 45 | 28 | 7 | 2 | 112 |

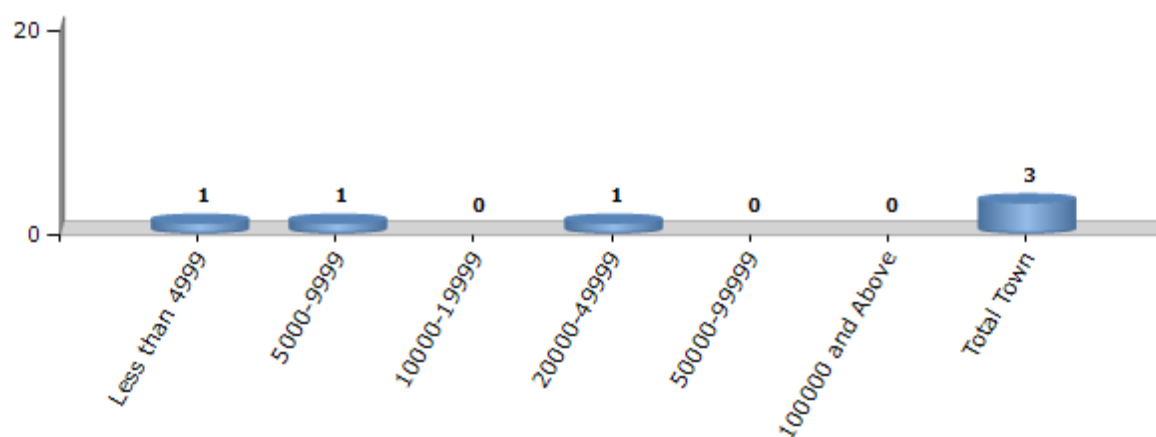
Number of Villages by Population Size - 2011



Number of Towns by Population Size - 2011

| Less than 4999 | 5000-9999 | 10000-19999 | 20000-49999 | 50000-99999 | 100000 and Above | Total Town |
|----------------|-----------|-------------|-------------|-------------|------------------|------------|
| 1 | 1 | 0 | 1 | 0 | 0 | 3 |

Number of Towns by Population Size - 2011



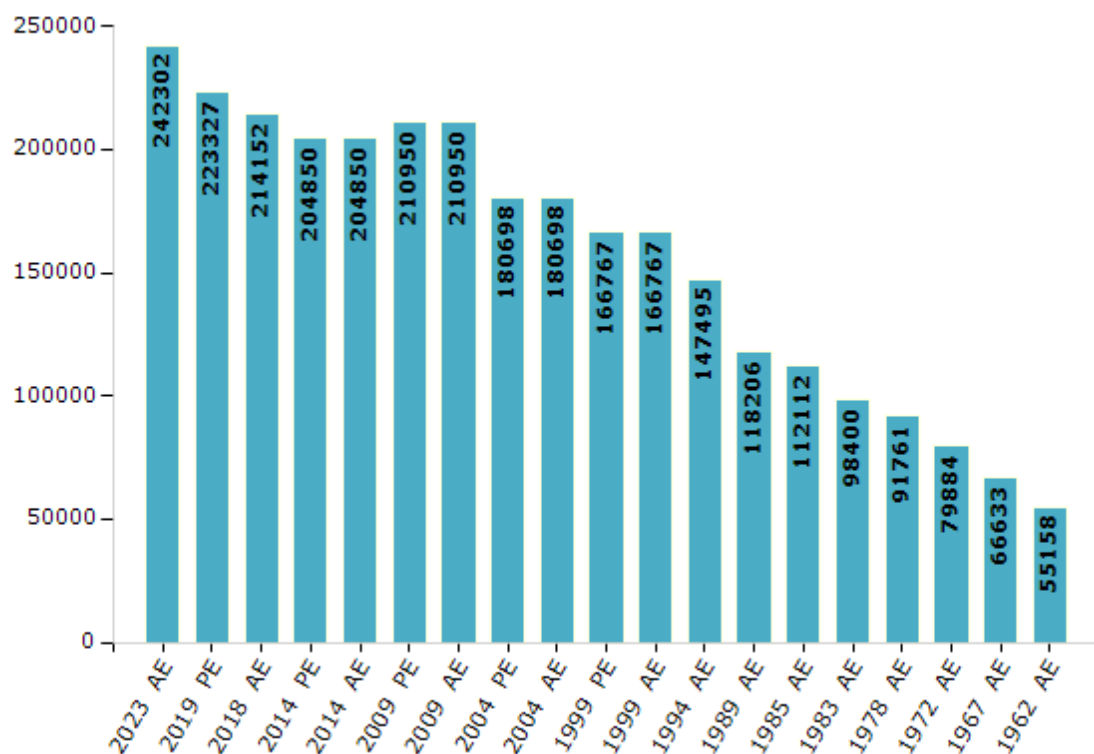
Electoral Features

Electors by Male & Female

| Year | Male | Female | Others | Total |
|---------|--------|--------|--------|--------|
| 2023 AE | 121296 | 121001 | 5 | 242302 |
| 2019 PE | 111973 | 111352 | 2 | 223327 |
| 2018 AE | 107964 | 106168 | 20 | 214152 |
| 2014 PE | 103049 | 101765 | 36 | 204850 |
| 2014 AE | 103049 | 101765 | 36 | 204850 |
| 2009 PE | 103676 | 107274 | - | 210950 |
| 2009 AE | 103676 | 107274 | - | 210950 |
| 2004 PE | 89393 | 91305 | - | 180698 |
| 2004 AE | 89393 | 91305 | - | 180698 |
| 1999 PE | 83116 | 83651 | - | 166767 |
| 1999 AE | 83116 | 83651 | - | 166767 |

| Year | Male | Female | Others | Total |
|---------|-------|--------|--------|--------|
| 1994 AE | 73201 | 74294 | - | 147495 |
| 1989 AE | 68806 | 49400 | - | 118206 |
| 1985 AE | 55182 | 56930 | - | 112112 |
| 1983 AE | 48555 | 49845 | - | 98400 |
| 1978 AE | 45009 | 46752 | - | 91761 |
| 1972 AE | 39263 | 40621 | - | 79884 |
| 1967 AE | - | - | - | 66633 |
| 1962 AE | - | - | - | 55158 |
| 1957 AE | - | - | - | - |
| 1955 AE | - | - | - | - |

Number of Electors

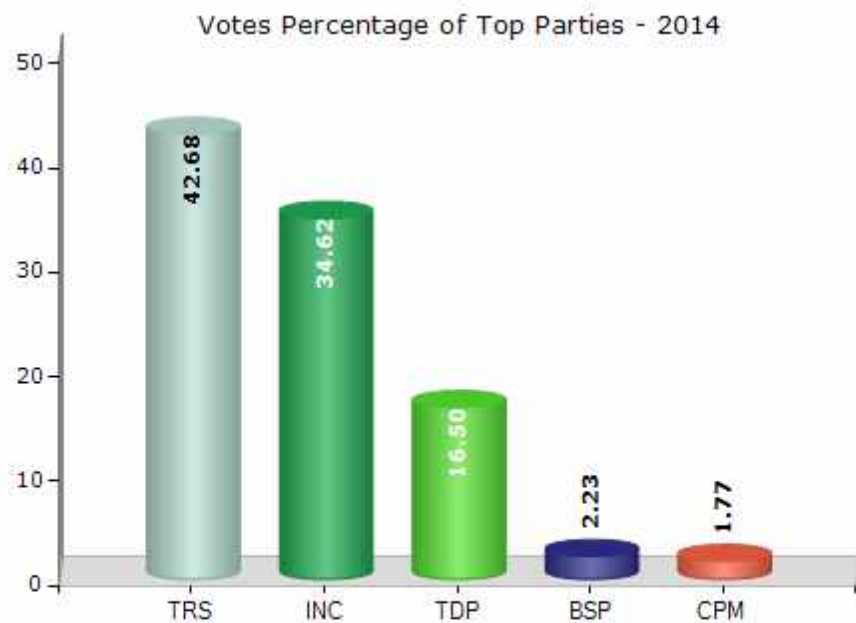


Note : AE : Assembly Election, PE : Assembly Segment of Parliamentary Election

Historical Summary Election Results

Summary Result of Assembly Election - 2014

| Candidate Name | Party | Votes | Votes % |
|--------------------------|-------|-------|---------|
| Guvvala Balaraju | TRS | 62584 | 42.68 |
| Chikkudu Vamshikrishna | INC | 50764 | 34.62 |
| Pothuganti Ramulu | TDP | 24199 | 16.5 |
| Nidigonda Sriramu | BSP | 3269 | 2.23 |
| Chintha Anjaneyulu | CPM | 2595 | 1.77 |
| B.Ravinder | YSRCP | 1279 | 0.87 |
| Chinthala Venkateshwarlu | AAP | 657 | 0.45 |
| | NOTA | 1298 | 0.89 |



Polling Station Level Election Results

Number and Name of Polling Stations (PS) (2018 AE)

| Number of Polling Stations | Name of Polling Stations | Number of Polling Stations | Name of Polling Stations |
|----------------------------|--|----------------------------|--|
| 1 | Mandal Parishad Upper Primary School,Sirsana Ganda | 22 | Mandala Prishad Primary School,Ullampally |
| 2 | Mandal Parishad Upper Primary School,Sirsangandla | 23 | Zilla Parishad High School, East Wing,Polkam Palli |
| 3 | Mandal Parishad Primary School,Shanthiguda | 24 | Zilla Parishad High School, New Building,Polkam Pally |
| 4 | Mandal Parishath Upper Primary School,Agraharam Thanda,Agraharam Tanda | 25 | Mandal Parishad Primary School, New Bldg,Chowder Pally |
| 5 | Mandal Parishad Upper Primary School,Agrahram Tanda,Agrahram Tanda | 26 | Z P H S West Wing,Rangapooru |
| 6 | Zilla Parishad High School,Charakonda | 27 | Zilla Parishad High School, East Wing,Rangapooru |
| 7 | Zilla Parshad High School,Charakonda | 28 | Mandal Parishad Primary School,Rangaa Pur |
| 8 | Mandal Parishad Primary School,Charakonda | 29 | Mandal Parishad Primary School,Rangapur |
| 9 | Zilla Parishath High School,Charakonda | 30 | Mandal Parishad Upper Primary School,Jajala |
| 10 | Zilla Parishad High School,Charakonda | 31 | Mandala Parishad Upper Primary School,Jajala |
| 11 | Mandal Parishad Primary School,Timmay Palli | 32 | Mandal Parishad Primary School,Annaram |
| 12 | Mandal Parishad Primary School,Sarambandatanda | 33 | Mandal Parishad Primary School,Pothireddy Pally |
| 13 | Mandal Parishath Upper Primary School,Turkalapalli | 34 | Zilla Parishath High School,Ulpara |
| 14 | Mandala Prishad Uppar Primary School (7Th Class),Turkalapally | 35 | Mandala Prishad Primary School,Ulpara |
| 15 | Mandal Parishad Primary School,Kondareddy Palli | 36 | Mandal Parishad Primary School, New Building,Mittasadagodu |
| 16 | Z.P.H.S,Kondareddy Palli | 37 | Mandala Prishad Primary School,Mittasadagodu |
| 17 | Zilla Parishad High School, East Wing,Vangoor | 38 | Zilla Parishad High School, North Wing,Dindi Chintha Palli |
| 18 | Zilla Parishad High School,West Wing,Vangoor | 39 | Zilla Parishad High School, South Wing,Dindichintha Pally |
| 19 | Govt Junior College,North Wing,Vangoor | 40 | Mandal Parishad Upper Primary School,Uppalpahad |
| 20 | Mandal Parishad Primary School,Machanoni Palli | 41 | Mandal Parishad Primary School,Venkatapur |
| 21 | Mandal Parishad Upper Primary School,Thummala Palli | 42 | Mandal Parishad Upper Primary School,Sarva Reddy Palli |

Contd....

Polling Station Level Election Results

Polling Station-wise Votes Secured by Overall Top Five Parties in Achampet Assembly in Assembly Election (AE) under Nagarkurnool Parliamentary Constituency in Telangana (2018)

| Number of Polling Station | Winner - Guvvala Balaraju (TRS) | Runner-up - Chikkudu Vamshikrishna (INC) | 3rd - Medipur Malleshwar (BJP) | 4th - Srinivasulu Koyyala (BSP) | 5th - Mahesh Palle (IND) | NOTA | Other | Total Votes Secured |
|---------------------------|---------------------------------|--|--------------------------------|---------------------------------|--------------------------|------|-------|---------------------|
| 36 | 307 | 214 | 2 | 0 | 1 | 5 | 1 | 530 |
| 37 | 252 | 225 | 1 | 1 | 2 | 3 | 4 | 488 |
| 38 | 412 | 336 | 4 | 8 | 4 | 9 | 11 | 784 |
| 39 | 357 | 371 | 0 | 7 | 3 | 2 | 1 | 741 |
| 40 | 516 | 247 | 13 | 5 | 6 | 12 | 29 | 828 |
| 41 | 317 | 123 | 3 | 4 | 1 | 7 | 4 | 459 |
| 42 | 489 | 312 | 3 | 2 | 2 | 11 | 22 | 841 |
| 43 | 432 | 306 | 14 | 6 | 8 | 11 | 21 | 798 |
| 44 | 483 | 240 | 1 | 3 | 5 | 14 | 3 | 749 |
| 45 | 381 | 181 | 2 | 3 | 2 | 10 | 2 | 581 |
| 46 | 244 | 144 | 1 | 1 | 2 | 7 | 2 | 401 |
| 47 | 262 | 309 | 4 | 1 | 0 | 18 | 7 | 601 |
| 48 | 296 | 357 | 4 | 3 | 5 | 6 | 6 | 677 |
| 49 | 399 | 336 | 7 | 1 | 5 | 7 | 1 | 756 |
| 50 | 294 | 219 | 37 | 2 | 4 | 5 | 5 | 566 |
| 51 | 651 | 205 | 7 | 3 | 1 | 21 | 18 | 906 |
| 52 | 574 | 271 | 10 | 3 | 11 | 33 | 6 | 908 |
| 53 | 427 | 221 | 2 | 6 | 3 | 21 | 5 | 685 |
| 54 | 462 | 277 | 15 | 2 | 6 | 16 | 15 | 793 |
| 55 | 312 | 292 | 11 | 0 | 0 | 6 | 2 | 623 |
| 56 | 470 | 333 | 18 | 8 | 8 | 13 | 7 | 857 |
| 57 | 417 | 314 | 7 | 2 | 9 | 16 | 15 | 780 |
| 58 | 260 | 341 | 5 | 4 | 6 | 14 | 17 | 647 |
| 59 | 216 | 191 | 5 | 1 | 3 | 3 | 7 | 426 |
| 60 | 291 | 264 | 1 | 2 | 1 | 4 | 6 | 569 |
| 61 | 263 | 304 | 2 | 2 | 2 | 3 | 1 | 577 |
| 62 | 311 | 236 | 5 | 1 | 1 | 10 | 1 | 565 |
| 63 | 443 | 291 | 9 | 0 | 7 | 19 | 2 | 771 |
| 64 | 473 | 363 | 42 | 1 | 5 | 8 | 13 | 905 |
| 65 | 143 | 239 | 5 | 2 | 2 | 5 | 3 | 399 |
| 66 | 259 | 185 | 4 | 2 | 1 | 6 | 5 | 462 |
| 67 | 293 | 386 | 5 | 4 | 0 | 0 | 6 | 694 |
| 68 | 457 | 325 | 9 | 10 | 7 | 3 | 4 | 815 |
| 69 | 313 | 178 | 6 | 4 | 1 | 4 | 8 | 514 |
| 70 | 283 | 244 | 10 | 4 | 1 | 9 | 4 | 555 |

Contd....

Polling Station Level Election Results

Winner, Runner-up and 3rd Party Position & Winning Margin According to Polling Stations in Achampet Assembly in Assembly Election (AE) under Nagarkurnool Parliamentary Constituency in Telangana (2018)

| Polling Station Number | Winner Party | Winner Votes (%) | Runner-up Party | Runner-up Votes (%) | Winning Margin Votes (%) | Third Party | Third Party Votes (%) | Other Votes (%) |
|------------------------|--------------|------------------|-----------------|---------------------|--------------------------|-------------|-----------------------|-----------------|
| 71 | INC | 385 (62.81) | TRS | 207 (33.77) | 178 (29.04) | BJP | 11 (1.79) | 10 (1.63) |
| 72 | INC | 247 (57.44) | TRS | 154 (35.81) | 93 (21.63) | BJP | 12 (2.79) | 17 (3.95) |
| 73 | INC | 523 (54.37) | TRS | 404 (42) | 119 (12.37) | BJP | 12 (1.25) | 23 (2.39) |
| 74 | INC | 413 (54.27) | TRS | 310 (40.74) | 103 (13.53) | BJP | 13 (1.71) | 25 (3.29) |
| 75 | TRS | 218 (55.33) | INC | 156 (39.59) | 62 (15.74) | BJP | 5 (1.27) | 15 (3.81) |
| 76 | TRS | 487 (50.89) | INC | 435 (45.45) | 52 (5.44) | BJP | 14 (1.46) | 21 (2.19) |
| 77 | TRS | 619 (64.15) | INC | 290 (30.05) | 329 (34.1) | BJP | 15 (1.55) | 41 (4.25) |
| 78 | TRS | 422 (53.96) | INC | 310 (39.64) | 112 (14.32) | BJP | 10 (1.28) | 40 (5.12) |
| 79 | INC | 403 (49.27) | TRS | 373 (45.6) | 30 (3.67) | BJP | 11 (1.34) | 31 (3.79) |
| 80 | INC | 278 (51.87) | TRS | 220 (41.04) | 58 (10.83) | IND (MP) | 9 (1.68) | 29 (5.41) |
| 81 | TRS | 378 (55.34) | INC | 239 (34.99) | 139 (20.35) | BJP | 17 (2.49) | 49 (7.17) |
| 82 | TRS | 466 (61.07) | INC | 279 (36.57) | 187 (24.5) | BJP | 8 (1.05) | 10 (1.31) |
| 83 | TRS | 362 (54.03) | INC | 274 (40.9) | 88 (13.13) | BJP | 15 (2.24) | 19 (2.84) |
| 84 | TRS | 299 (55.17) | INC | 215 (39.67) | 84 (15.5) | BJP | 12 (2.21) | 16 (2.95) |
| 85 | TRS | 257 (53.32) | INC | 199 (41.29) | 58 (12.03) | BJP | 9 (1.87) | 17 (3.53) |
| 86 | TRS | 318 (50.64) | INC | 298 (47.45) | 20 (3.19) | BJP | 2 (0.32) | 10 (1.59) |
| 87 | INC | 291 (49.32) | TRS | 289 (48.98) | 2 (0.34) | BJP | 1 (0.17) | 9 (1.53) |
| 88 | INC | 406 (49.88) | TRS | 368 (45.21) | 38 (4.67) | BJP | 25 (3.07) | 15 (1.84) |
| 89 | INC | 538 (54.29) | TRS | 411 (41.47) | 127 (12.82) | BJP | 15 (1.51) | 27 (2.72) |
| 90 | INC | 271 (52.12) | TRS | 230 (44.23) | 41 (7.89) | BJP | 4 (0.77) | 15 (2.88) |
| 91 | INC | 422 (69.64) | TRS | 166 (27.39) | 256 (42.25) | BJP | 10 (1.65) | 8 (1.32) |
| 92 | INC | 378 (53.92) | TRS | 294 (41.94) | 84 (11.98) | BJP | 13 (1.85) | 16 (2.28) |
| 93 | TRS | 323 (51.35) | INC | 276 (43.88) | 47 (7.47) | BJP | 10 (1.59) | 20 (3.18) |
| 94 | INC | 430 (59.23) | TRS | 270 (37.19) | 160 (22.04) | BSP | 6 (0.83) | 20 (2.75) |
| 95 | INC | 502 (59.2) | TRS | 327 (38.56) | 175 (20.64) | BJP | 9 (1.06) | 10 (1.18) |
| 96 | INC | 246 (62.76) | TRS | 124 (31.63) | 122 (31.13) | BJP | 9 (2.3) | 13 (3.32) |
| 97 | INC | 345 (58.08) | TRS | 228 (38.38) | 117 (19.7) | BJP | 14 (2.36) | 7 (1.18) |
| 98 | INC | 245 (54.93) | TRS | 187 (41.93) | 58 (13) | BJP | 7 (1.57) | 7 (1.57) |
| 99 | INC | 467 (61.37) | TRS | 247 (32.46) | 220 (28.91) | BJP | 12 (1.58) | 35 (4.6) |
| 100 | TRS | 405 (48.5) | INC | 392 (46.95) | 13 (1.55) | BJP | 16 (1.92) | 22 (2.63) |
| 101 | INC | 398 (67.57) | TRS | 162 (27.5) | 236 (40.07) | BJP | 18 (3.06) | 11 (1.87) |
| 102 | INC | 260 (52.95) | TRS | 201 (40.94) | 59 (12.01) | BJP | 16 (3.26) | 14 (2.85) |
| 103 | INC | 342 (52.29) | TRS | 280 (42.81) | 62 (9.48) | BJP | 13 (1.99) | 19 (2.91) |
| 104 | INC | 197 (60.99) | TRS | 111 (34.37) | 86 (26.62) | BJP | 7 (2.17) | 8 (2.48) |
| 105 | INC | 307 (53.11) | TRS | 254 (43.94) | 53 (9.17) | BJP | 5 (0.87) | 12 (2.08) |

Contd....

Socio-Economic Amenities - Rural

Access to Education Facilities

| Particulars | Number of Villages (% of Population) | | | | |
|---|--------------------------------------|---------------|--|---------|-----------|
| | Available | Not Available | If Not Available (Distance of Nearest Facility) | | |
| | | | A | B | C |
| Govt. Primary School | 110 (99) | 2 (1) | 0 (0) | 1 (1) | 1 (0) |
| Private Primary School | 6 (16) | 106 (84) | 0 (0) | 0 (0) | 0 (0) |
| Govt. Middle School | 54 (74) | 58 (26) | 14 (6) | 32 (14) | 8 (5) |
| Private Middle School | 5 (13) | 107 (87) | 2 (1) | 1 (1) | 0 (0) |
| Govt. Secondary School | 24 (49) | 88 (51) | 21 (13) | 50 (27) | 16 (11) |
| Private Secondary School | 4 (9) | 108 (91) | 0 (0) | 0 (0) | 0 (0) |
| Govt. Senior Secondary School | 5 (14) | 107 (86) | 9 (7) | 46 (37) | 52 (42) |
| Private Senior Secondary School | 0 (0) | 112 (100) | 0 (0) | 0 (0) | 0 (0) |
| Govt. Arts and Science Degree College | 2 (8) | 110 (92) | 8 (5) | 23 (24) | 70 (60) |
| Private Arts and Science Degree College | 0 (0) | 112 (100) | 0 (0) | 2 (1) | 7 (3) |
| Govt. Engineering College | 0 (0) | 112 (100) | 0 (0) | 0 (0) | 1 (2) |
| Private Engineering College | 0 (0) | 112 (100) | 0 (0) | 0 (0) | 111 (98) |
| Govt. Medicine College | 0 (0) | 112 (100) | 0 (0) | 0 (0) | 1 (2) |
| Private Medicine College | 0 (0) | 112 (100) | 0 (0) | 0 (0) | 111 (98) |
| Govt. Management Institute | 0 (0) | 112 (100) | 0 (0) | 0 (0) | 2 (2) |
| Private Management Institute | 0 (0) | 112 (100) | 0 (0) | 0 (0) | 110 (98) |
| Govt. Polytechnic | 0 (0) | 112 (100) | 0 (0) | 0 (0) | 112 (100) |
| Private Polytechnic | 0 (0) | 112 (100) | 0 (0) | 0 (0) | 0 (0) |
| Govt. Vocational Training School/ITI | 1 (2) | 111 (98) | 2 (1) | 4 (8) | 105 (88) |
| Private Vocational Training School/ITI | 0 (0) | 112 (100) | 0 (0) | 0 (0) | 0 (0) |
| Govt. Non Formal Training Centre | 0 (0) | 112 (100) | 5 (4) | 13 (14) | 93 (82) |
| Private Non Formal Training Centre | 0 (0) | 112 (100) | 0 (0) | 0 (0) | 1 (0) |
| Govt. School For Disabled | 0 (0) | 112 (100) | 0 (0) | 0 (0) | 112 (100) |
| Private School For Disabled | 0 (0) | 112 (100) | 0 (0) | 0 (0) | 0 (0) |
| Government Others | 0 (0) | 112 (100) | 0 (0) | 0 (0) | 0 (0) |
| Private Others | 0 (0) | 112 (100) | 0 (0) | 0 (0) | 0 (0) |

Note : Distance A : Less than 5 km; B : Between 5-10 km; C : 10+ km.; Source : Data Analysis is based on 2011 Census.

DISCLAIMER

The Terms of Use and Disclaimer of Datanet India Private Limited (hereinafter referred to as "Datanet") for use of this analysis report of **Achampet Assembly Constituency (Achampet Vidhan Sabha)** :-

1. **Assembly Factbook™** is a Registered Trade Mark owned by Datanet.
2. All the maps are sketched and graphical representation only and have not been drawn to the scale and also not to represent the actual geographical area or boundary of the unit.
3. The data for the aforesaid analysis is based on authentic sources and has been culled from the various publications of Census, CSO and NSSO for district and block level data, various central and state government departments, Central & State Elections Commissions and the concerned Returning Officers' releases, Electoral Rolls, Election results and allied publications, internal assessment, surveys, estimates and analysis. Therefore, certain adjustment of data at micro level may have been done to arrive closer to the macro data.
4. Data have been provided on an "As Is" and "As AVAILABLE" basis
5. The colours shown in the maps or diagram and charts of a particular party, alliance or AC are indicative and do not represent them.
6. This publication which includes maps, sheets, graphs and data would be the property under copyright of Datanet only. The user may use these for its internal study, analysis and research purposes. It's public display, re-selling or any commercial uses by the user are not allowed.
7. Datanet has taken due care and caution in compilation and processing of data and allied information, but does not guarantee the accuracy, adequacy or completeness of any information/analysis and will be not responsible for any errors or omissions or for the results obtained from the use of such information/analysis.
8. All the contents for the publication have been culled from various authentic sources and Datanet reasonably believes such sources to be reliable, but does not make any representations, express or implied as to the accuracy or fitness of use of such information. The information or contents of the information/analysis do not constitute advice and should not be relied upon in making (or refraining from making) any decision. Any reliance placed upon the information provided by Datanet is the sole responsibility and strictly at the user's risk.
9. In no event will Datanet be liable for any damages (including, without limitation, damages for loss of business projects, or loss of profits) arising in contract, tort or otherwise from the use of or inability to use any of its contents, or from any action taken (or refrained from being taken) as a result of using the analysis or any of its contents. Datanet its directors, owners, editors, officials, employees, distributor and agents or any associate will not be liable for any errors in the information contained or any consequences arising from the use of the contents of the provided information/analysis.
10. If any provision of these terms and conditions is held invalid or illegal or unenforceable for any reason by any court of competent jurisdiction, such provision shall be severed and the remainder of provisions of the terms and conditions shall continue in full force and effect as if the Term of Use had been executed with the invalid, illegal or unenforceable provision eliminated.
11. If there are any discrepancies in the information provided, please bring it to attention of Datanet for suitable rectification measures.

Buy Online This Complete Book At
Datanet India eBooks Store

www.indiastatpublications.com

or go directly at

[http://www.indiastatpublications.com/
Assembly_factbook/Telangana/Nagarkurnool/ Achampet](http://www.indiastatpublications.com/Assembly_factbook/Telangana/Nagarkurnool/Achampet)

 **india**stat**elections**

ISBN : 978-93-6219-274-5



9 789362 192745