



Telangana

Assembly Factbook™

Suryapet Assembly Constituency



Key Electoral Data of Suryapet
Assembly Constituency (Vidhan Sabha)

Telangana
Assembly FactbookTM
Suryapet Assembly Constituency



Suryapet Vidhan Sabha

Editor & Director

Dr. R.K. Thukral

Research Editor

Dr. Shafeeq Rahman

Compiled, Researched and Published by Datanet India Pvt. Ltd.

D-100, 1st Floor,

Okhla Industrial Area, Phase-I,

New Delhi- 110020.

Ph.: 91-11- 43580781-84

Email : support@indiastatpublications.com

Website : www.indiastatelections.com

Online Book Store :

www.indiastatpublications.com

Report No. : AFB/TS-091-0125

ISBN : 978-93-6219-758-0

First Edition : January, 2018

Eighth Updated Edition : January, 2025

Price : Rs.11500/-

US\$ 310

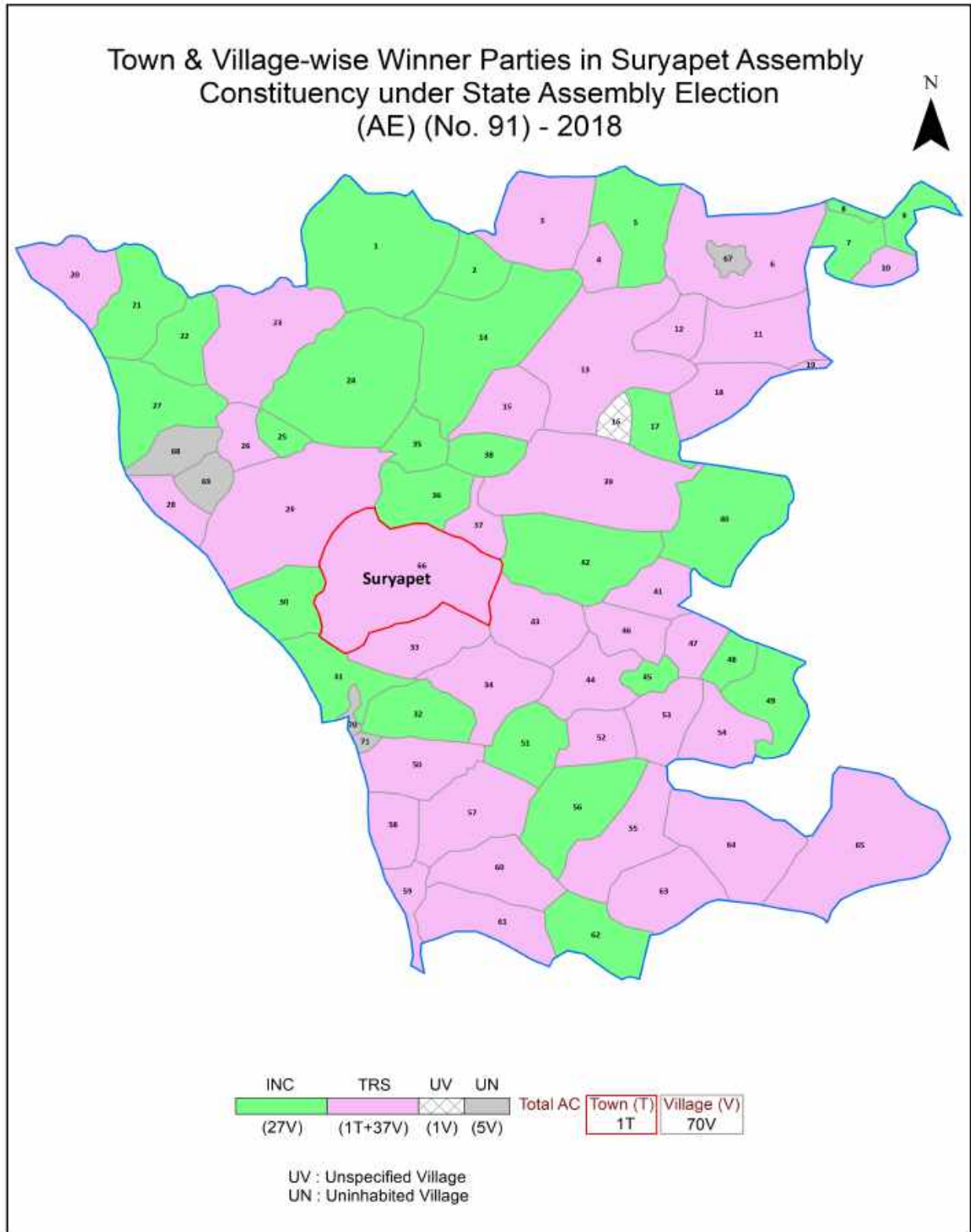
© Datanet India Pvt. Ltd.

All rights reserved. No part of this book may be reproduced, stored in a retrieval system or transmitted in any form or by any means, mechanical photocopying, photographing, scanning, recording or otherwise without the prior written permission of the publisher. Please refer to Disclaimer at page no. 217 for the use of this publication.

Printed in India

No.	Particulars	Page No.
	Introduction	
1	Assembly Constituency - (Vidhan Sabha) at a Glance Features of Assembly as per Delimitation Commission of India (2008)	1-2
	Location and Political Maps	
2	Location Map Boundaries of Assembly Constituency - (Vidhan Sabha) in District Boundaries of Assembly Constituency under Parliamentary Constituency - (Lok Sabha) Town & Village-wise Winner Parties- 2024-PE, 2023-AE, 2019-PE, 2018-AE, 2014-PE, 2014-AE, 2009-PE and 2009-AE	3-11
	Administrative Setup (2011)	
3	District Sub-district Towns Villages Inhabited Villages Uninhabited Villages Village Panchayat Intermediate Panchayat	12-16
	Demographics (2011)	
4	Population Households Rural/Urban Population Towns and Villages by Population Size Sex Ratio (Total & 0-6 Years) Religious Population Social Population Literacy Rate	17-18
	Electoral Features	
5	Important Dates of Last Elections Held Electors by Gender Service Electors Voters Voters Turnout Polling Stations & Average Number of Electors per Polling Station Electors by Age Group Present Elected Representatives	19-24
	Historical Summary Election Results	
6	Vote Share of Major Parties Winning Margin (Number & Percentage) Polarity of Parties Summary Result of Assembly Segment of Parliamentary Election 2024, 2019, 2014, 2009, 2004 and 1999 Summary Result of Assembly Elections 2023, 2018, 2014, 2009, 2004, 1999, 1994, 1989, 1985, 1983, 1978, 1972, 1967, 1962 and 1957	25-47
	Polling Station Level Election Results	
7	Name and Number of Polling Station 2024-PE, 2023-AE, 2019-PE, 2018-AE, 2014-PE, 2014-AE, 2009-PE and 2009-AE Polling Station-wise Electors, Voters & Voters Turnout 2024-PE, 2023-AE, 2019-PE, 2018-AE, 2014-PE, 2014-AE, 2009-PE and 2009-AE Polling Station wise Elections Results 2024-PE, 2023-AE, 2019-PE, 2018-AE, 2014-PE, 2014-AE, 2009-PE and 2009-AE	48-197
	Share of Assembly Constituency	
8	Share of Assembly Constituency - (Vidhan Sabha) in State, District and Parliamentary Constituency - (Lok Sabha)	198
	Socio-Economic Amenities (2011)	
9	Access to Administrative Units Agricultural, Manufacturing and Industrial Commodities Demographic Indicators Education Health & Manpower Drinking Water Supply Sanitation Entertainment and Recreations Infrastructure Power Food Allocation Distribution and Marketing of Agriculture Commodities Infrastructure Transport and Road Infrastructure Communication Banking and Financial Services Land Use Irrigation Source	200-214
10	Abbreviation & Sources	215-216
11	Disclaimer	217

Location & Political Map



Administrative Setup

List of Village Panchayat & Intermediate Panchayat (Block) Name - 2011

Village Name	Village Panchayat Name	Intermediate Panchayat Name
Ailapur	Ailapur	Chivvemla
Aipur	Aipur	Atmakur (S)
Anajipuram	Anajipuram	Penpahad
Anatharam	Anatharam	Penpahad
Atmakur	Atmakur	Atmakur (S)
Balemla	Balemla	Suryapet
Beebiguda	Beebiguda	Chivvemla
Bhakthalapuram	Bhakthalapuram	Penpahad
Bopparam	Bopparam	Atmakur (S)
Cheedella	Cheedella	Penpahad
Chendupatla	Chendupatla	Chivvemla
Chivvemla	Chivvemla	Chivvemla
Dacharam	Dacharam	Atmakur (S)
Dharmapuram	Dharmapuram	Penpahad
Dosapahad	Dosapahad	Penpahad
Dupahad	Dupahad	Penpahad
Duraj Palle	Duraj Palle	Chivvemla
Enubamla	Enubamla	Atmakur (S)
Gajulamalkapuram	Gajulamalkapuram	Penpahad
Gattikal	Gattikal	Atmakur (S)
Gayamvari Guda	Gayamvari Guda	Chivvemla
Gollaguda	Atmakur	Atmakur (S)
Gumpula	Ailapur	Chivvemla
Gunjaluru	Gunjaluru	Chivvemla
Imampet	Imampet	Suryapet
Isthalapur	Isthalapur	Atmakur (S)
Kandagatla	Kandagatla	Atmakur (S)
Kasarabad	Kasarabad	Suryapet
Kesaram (Part)	Kesaram	Suryapet

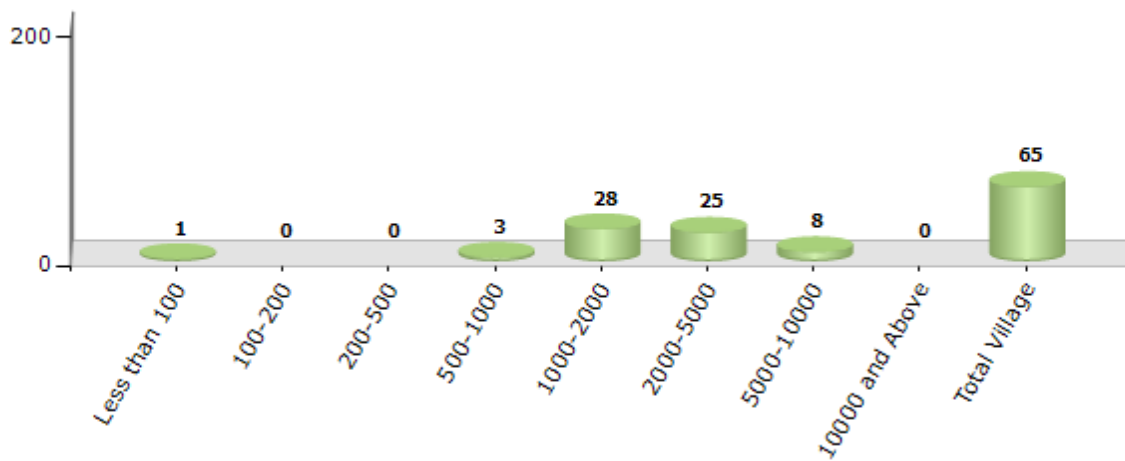
Contd....

Demographics

Number of Villages by Population Size - 2011

Less than 100	100-200	200-500	500-1000	1000-2000	2000-5000	5000-10000	10000 and Above	Total Village
1	0	0	3	28	25	8	0	65

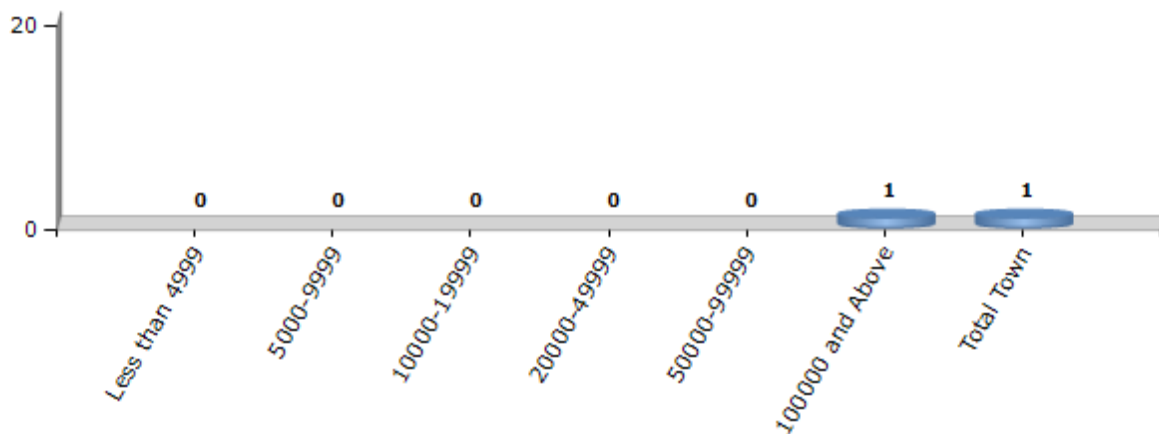
Number of Villages by Population Size - 2011



Number of Towns by Population Size - 2011

Less than 4999	5000-9999	10000-19999	20000-49999	50000-99999	100000 and Above	Total Town
0	0	0	0	0	1	1

Number of Towns by Population Size - 2011

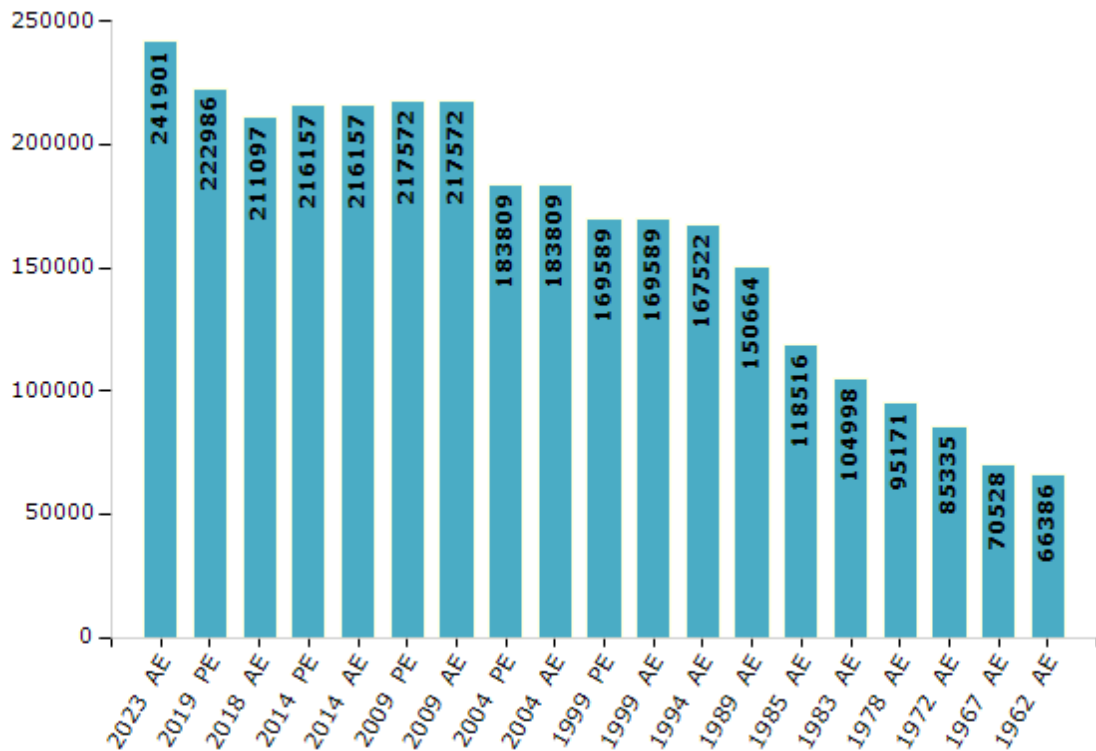


Electoral Features

Electors by Male & Female

Year	Male	Female	Others	Total	Year	Male	Female	Others	Total
2023 AE	118545	123339	17	241901	1994 AE	85143	82379	-	167522
2019 PE	109840	113142	4	222986	1989 AE	76584	74080	-	150664
2018 AE	104459	106626	12	211097	1985 AE	59469	59047	-	118516
2014 PE	107517	108629	11	216157	1983 AE	52806	52192	-	104998
2014 AE	107517	108629	11	216157	1978 AE	47903	47268	-	95171
2009 PE	107994	109578	-	217572	1972 AE	42809	42526	-	85335
2009 AE	107994	109578	-	217572	1967 AE	-	-	-	70528
2004 PE	91977	91832	-	183809	1962 AE	-	-	-	66386
2004 AE	91977	91832	-	183809	1957 AE	-	-	-	-
1999 PE	85454	84135	-	169589	1955 AE	-	-	-	-
1999 AE	85454	84135	-	169589					

Number of Electors



Note : AE : Assembly Election, PE : Assembly Segment of Parliamentary Election

Historical Summary Election Results

Summary Result of Assembly Election - 2014

Candidate Name	Party	Votes	Votes %
Guntakandla Jagadish Reddy	TRS	43554	25.22
Sankineni Venkateshwer Rao	IND	41335	23.93
Damodar Reddy Ramreddy	INC	39175	22.68
Patel Ramesh Reddy	TDP	38529	22.31
Beeravolu Sri Harsha	IND	2797	1.62
Beeravolu Somi Reddy	YSRCP	1621	0.94
Muppani Linga Reddy	IND	1448	0.84
Dasari Narendar	BSP	1202	0.7
Racharla Vijaykumar	PPOI	685	0.4
Degala Janardhan	AAP	458	0.27
Mandari Devid	IND	412	0.24
Maram Venkat Reddy	IND	318	0.18
Marri Nehemiah	IND	171	0.1
Garlapati Upendar Reddy	IND	150	0.09
Joseph Mynam	IND	124	0.07
	NOTA	722	0.42

Polling Station Level Election Results

Number and Name of Polling Stations (PS) (2018 AE)

Number of Polling Stations	Name of Polling Stations	Number of Polling Stations	Name of Polling Stations
1	Jilla Parishath Vunnatha Patashala,Solipet	22	Mandala Parishad Pradhamika Patha Shala Turupu,Gandhi Nagar
2	Mandala Parishad Pradhamika Patashala,Ramachandrapuram	22A	Mandala Parishad Pradhamika Patha Shala Turupu,Gandhi Nagar
3	Mandal Parishad Upper Primary School,Rathnapuram	23	Mandala Parishad Pradhamika Patashala (Padamara),Ghandhi Nagar
4	Grama Panchayithi Karyalayam,Ramaram	24	Gram Panchayat Office(Meeting Hall),Rayinigudem
5	Mandal Parishath Pradhamikaonnta Patashala,Ramaram	25	Gram Panchayat Office(East Wing),Rayini Gudem
6	Jilla Parishath Vunnatha Patashala,Yerkaram	26	Jilla Parishad Unnata Patha Shala,Tekumatla
7	Jilla Parishath Unnatha Patashala,Yarkaram	27	Mandala Parishad Pradhamika Patha Shala Padmara,Tekumatla
8	Mandala Parishad Pradamika Patashala,Raja Nayak Thanda	28	M.P.P.S.,Enubamula
9	Jilla Parishad Unnata Pathashala (Utaram),Yandlapally	29	Mandala Parishad Primary School, Chinthalchervu,Suryapet
10	Jilla Prashath Unnata Patashala (Padamara),Yandlapally	30	M.P.P.S. Chinthala Cheruvu,Suryapet
11	Mandala Parishad Pradhamika Patha Shala,Yandlapally	31	Prabhutva Pradamika Patshala Ambedkar Nagar,Suryapet
12	Mandala Parishath Pradamika Patashala,Pinnayi Palem	32	Prabhutva Pradhamika Patashala Tallagadda,Suryapet
13	Mandala Parishad Pradamika Patashala,Sapavat Tanda	33	Prabhutva Prathamika Patashala Thallagadda,Suryapet
14	Mandala Parishad Pradhamika Patha Shala,Ramanna Gudem	34	Govt. Junior College New Building, Room No.9,Suryapet
15	Jilla Parishad Unnata Patha Shala(Sorth Wing),Balemla	35	Dy E E(Musi Sub Division Office) Suryapet,Suryapet
16	Mandala Parishad Pradhamika Patha Shala(E.W),Balemula	36	Anand Vidhyamandir,Suryapet
17	Jilla Parishad Unnata Patha Shala West Wing,Balemla	37	Government Primary School, Room No.2, Indira Nagar, Sri Sri Nagar,Suryapet
18	Mandala Parishad Pradhamika Patha Shala,Aaregudem	38	Neeti Parudala Shakha Karyalayamu,Suryapet
19	Jilla Parishad Unnata Patha Shala (Uttaram),Pillalamarri	39	Navodaya Concept School(E.M) Ukg-2 Rool,Suryapet
20	Jilla Parishad Unnata Patha Shala (S.W),Pillalamarri	40	Navodaya Concept School(E.M) Nursery-1 Rool,Suryapet
21	Mandala Parishad Pradhamika Patha Shala,Pillalamarri	41	Anandha Vidhyamandhir Vunnatha Patashala (Thurpu),Suryapet

Contd....

Polling Station Level Election Results

Polling Station-wise Votes Secured by Overall Top Five Parties in Suryapet Assembly in Assembly Election (AE) under Nalgonda Parliamentary Constituency in Telangana (2018)

Number of Polling Station	Winner - Guntakandla Jagadish Reddy (TRS)	Runner-up - Damodar Reddy Ram Reddy (INC)	3rd - Sankineni Venkateswar Rao (BJP)	4th - Dongari Venu (IND)	5th - Perumalla Venkanna (IND)	NOTA	Other	Total Votes Secured
35	151	90	103	4	2	5	6	361
36	220	357	133	13	6	5	20	754
37	213	258	150	13	4	5	25	668
38	242	132	246	14	5	2	9	650
39	136	192	108	1	4	1	23	465
40	211	362	102	7	3	1	23	709
41	142	185	105	1	1	4	13	451
42	99	85	93	2	2	1	5	287
43	266	268	217	11	3	5	9	779
44	139	163	157	2	0	4	3	468
45	354	178	200	13	7	6	17	775
46	300	288	140	22	12	5	27	794
47	368	154	218	10	10	10	23	793
48	272	223	140	16	0	2	14	667
49	297	279	164	20	8	3	26	797
50	395	274	193	23	9	5	20	919
51	384	310	245	9	3	9	11	971
52	442	186	464	21	15	5	39	1172
53	243	222	201	13	5	5	20	709
53A	238	166	199	2	2	9	16	632
54	214	127	211	22	3	5	40	622
54A	275	151	161	4	5	7	11	614
55	446	199	394	25	15	8	28	1115
56	194	123	202	1	3	4	13	540
57	270	218	249	4	3	18	4	766
58	230	196	218	2	8	7	9	670
59	368	336	156	3	6	3	15	887
60	358	351	207	8	11	6	19	960
61	292	363	152	14	5	5	19	850
62	106	70	76	4	3	2	8	269
63	183	166	168	7	0	4	7	535
64	272	192	161	4	3	3	9	644
65	219	276	45	4	1	1	6	552
66	352	195	247	6	6	6	13	825
67	256	61	139	5	4	1	9	475

Contd....

Polling Station Level Election Results

Winner, Runner-up and 3rd Party Position & Winning Margin According to Polling Stations in Suryapet Assembly in Assembly Election (AE) under Nalgonda Parliamentary Constituency in Telangana (2018)

Polling Station Number	Winner Party	Winner Votes (%)	Runner-up Party	Runner-up Votes (%)	Winning Margin Votes (%)	Third Party	Third Party Votes (%)	Other Votes (%)
68	INC	467 (44.06)	TRS	398 (37.55)	69 (6.51)	BJP	144 (13.58)	51 (4.81)
69	INC	477 (43.64)	TRS	361 (33.03)	116 (10.61)	BJP	188 (17.2)	67 (6.13)
70	INC	337 (47.46)	TRS	172 (24.23)	165 (23.23)	BJP	153 (21.55)	48 (6.76)
71	TRS	479 (41.08)	BJP	299 (25.64)	180 (15.44)	INC	297 (25.47)	91 (7.8)
72	TRS	239 (33.76)	INC	239 (33.76)	0 (0)	BJP	206 (29.1)	24 (3.39)
73	TRS	238 (40.61)	INC	177 (30.2)	61 (10.41)	BJP	131 (22.35)	40 (6.83)
74	BJP	335 (38.24)	TRS	297 (33.9)	38 (4.34)	INC	200 (22.83)	44 (5.02)
75	TRS	94 (41.59)	BJP	72 (31.86)	22 (9.73)	INC	50 (22.12)	10 (4.42)
76	TRS	98 (39.68)	INC	77 (31.17)	21 (8.51)	BJP	61 (24.7)	11 (4.45)
77	TRS	225 (36.7)	BJP	191 (31.16)	34 (5.54)	INC	178 (29.04)	19 (3.1)
78	BJP	225 (40.39)	TRS	179 (32.14)	46 (8.25)	INC	129 (23.16)	24 (4.31)
79	TRS	221 (38.5)	INC	181 (31.53)	40 (6.97)	BJP	149 (25.96)	23 (4.01)
80	INC	243 (41.33)	TRS	168 (28.57)	75 (12.76)	BJP	164 (27.89)	13 (2.21)
81	TRS	259 (40.6)	INC	192 (30.09)	67 (10.51)	BJP	155 (24.29)	32 (5.02)
82	TRS	214 (50)	INC	114 (26.64)	100 (23.36)	BJP	92 (21.5)	8 (1.87)
83	TRS	274 (38.87)	BJP	236 (33.48)	38 (5.39)	INC	167 (23.69)	28 (3.97)
84	TRS	241 (36.19)	BJP	216 (32.43)	25 (3.76)	INC	176 (26.43)	33 (4.95)
85	INC	201 (39.18)	TRS	188 (36.65)	13 (2.53)	BJP	111 (21.64)	13 (2.53)
86	TRS	92 (38.02)	INC	86 (35.54)	6 (2.48)	BJP	59 (24.38)	5 (2.07)
87	TRS	318 (36.47)	INC	292 (33.49)	26 (2.98)	BJP	209 (23.97)	53 (6.08)
88	INC	260 (40.94)	TRS	211 (33.23)	49 (7.71)	BJP	133 (20.94)	31 (4.88)
89	TRS	194 (37.52)	BJP	171 (33.08)	23 (4.44)	INC	127 (24.56)	25 (4.84)
90	BJP	207 (36.06)	TRS	175 (30.49)	32 (5.57)	INC	168 (29.27)	24 (4.18)
91	TRS	310 (38.51)	BJP	232 (28.82)	78 (9.69)	INC	224 (27.83)	39 (4.84)
92	TRS	311 (43.62)	BJP	221 (31)	90 (12.62)	INC	141 (19.78)	40 (5.61)
93	TRS	336 (44.27)	INC	211 (27.8)	125 (16.47)	BJP	182 (23.98)	30 (3.95)
94	BJP	404 (40.97)	TRS	337 (34.18)	67 (6.79)	INC	172 (17.44)	73 (7.4)
95	TRS	314 (45.18)	INC	192 (27.63)	122 (17.55)	BJP	155 (22.3)	34 (4.89)
96	BJP	414 (40.08)	TRS	385 (37.27)	29 (2.81)	INC	166 (16.07)	68 (6.58)
97	TRS	355 (42.26)	INC	258 (30.71)	97 (11.55)	BJP	199 (23.69)	28 (3.33)
98	TRS	447 (48.12)	BJP	283 (30.46)	164 (17.66)	INC	150 (16.15)	49 (5.27)
99	TRS	246 (38.86)	BJP	208 (32.86)	38 (6)	INC	167 (26.38)	12 (1.9)
100	TRS	365 (40.87)	BJP	246 (27.55)	119 (13.32)	INC	245 (27.44)	37 (4.14)
101	TRS	299 (38.53)	BJP	285 (36.73)	14 (1.8)	INC	147 (18.94)	45 (5.8)
102	INC	373 (45.82)	TRS	224 (27.52)	149 (18.3)	BJP	143 (17.57)	74 (9.09)

Contd....

Socio-Economic Amenities - Rural

Access to Education Facilities

Particulars	Number of Villages (% of Population)				
	Available	Not Available	If Not Available (Distance of Nearest Facility)		
			A	B	C
Govt. Primary School	64 (100)	1 (0)	1 (0)	0 (0)	0 (0)
Private Primary School	9 (25)	56 (75)	0 (0)	0 (0)	0 (0)
Govt. Middle School	55 (93)	10 (7)	8 (6)	2 (1)	0 (0)
Private Middle School	6 (16)	59 (84)	0 (0)	0 (0)	0 (0)
Govt. Secondary School	37 (75)	28 (25)	17 (15)	10 (9)	0 (0)
Private Secondary School	6 (18)	59 (82)	0 (0)	1 (1)	0 (0)
Govt. Senior Secondary School	5 (15)	60 (85)	7 (12)	29 (45)	12 (14)
Private Senior Secondary School	2 (6)	63 (94)	3 (1)	3 (4)	4 (3)
Govt. Arts and Science Degree College	0 (0)	65 (100)	0 (0)	12 (20)	38 (54)
Private Arts and Science Degree College	0 (0)	65 (100)	2 (6)	7 (14)	6 (6)
Govt. Engineering College	0 (0)	65 (100)	0 (0)	2 (2)	14 (20)
Private Engineering College	1 (4)	64 (96)	4 (10)	20 (30)	24 (34)
Govt. Medicine College	0 (0)	65 (100)	0 (0)	0 (0)	0 (0)
Private Medicine College	0 (0)	65 (100)	0 (0)	0 (0)	65 (100)
Govt. Management Institute	0 (0)	65 (100)	0 (0)	0 (0)	0 (0)
Private Management Institute	0 (0)	65 (100)	2 (6)	19 (35)	44 (60)
Govt. Polytechnic	0 (0)	65 (100)	2 (6)	19 (35)	44 (60)
Private Polytechnic	0 (0)	65 (100)	0 (0)	0 (0)	0 (0)
Govt. Vocational Training School/ITI	0 (0)	65 (100)	0 (0)	10 (19)	24 (34)
Private Vocational Training School/ITI	0 (0)	65 (100)	2 (6)	9 (16)	20 (26)
Govt. Non Formal Training Centre	0 (0)	65 (100)	2 (6)	19 (35)	44 (60)
Private Non Formal Training Centre	0 (0)	65 (100)	0 (0)	0 (0)	0 (0)
Govt. School For Disabled	0 (0)	65 (100)	0 (0)	0 (0)	65 (100)
Private School For Disabled	0 (0)	65 (100)	0 (0)	0 (0)	0 (0)
Government Others	0 (0)	65 (100)	0 (0)	0 (0)	0 (0)
Private Others	0 (0)	65 (100)	0 (0)	0 (0)	0 (0)

Note : Distance A : Less than 5 km; B : Between 5-10 km; C : 10+ km.; Source : Data Analysis is based on 2011 Census.

DISCLAIMER

The Terms of Use and Disclaimer of Datanet India Private Limited (hereinafter referred to as "Datanet") for use of this analysis report of **Suryapet Assembly Constituency (Suryapet Vidhan Sabha)** :-

1. **Assembly Factbook™** is a Registered Trade Mark owned by Datanet.
2. All the maps are sketched and graphical representation only and have not been drawn to the scale and also not to represent the actual geographical area or boundary of the unit.
3. The data for the aforesaid analysis is based on authentic sources and has been culled from the various publications of Census, CSO and NSSO for district and block level data, various central and state government departments, Central & State Elections Commissions and the concerned Returning Officers' releases, Electoral Rolls, Election results and allied publications, internal assessment, surveys, estimates and analysis. Therefore, certain adjustment of data at micro level may have been done to arrive closer to the macro data.
4. Data have been provided on an "As Is" and "As AVAILABLE" basis
5. The colours shown in the maps or diagram and charts of a particular party, alliance or AC are indicative and do not represent them.
6. This publication which includes maps, sheets, graphs and data would be the property under copyright of Datanet only. The user may use these for its internal study, analysis and research purposes. It's public display, re-selling or any commercial uses by the user are not allowed.
7. Datanet has taken due care and caution in compilation and processing of data and allied information, but does not guarantee the accuracy, adequacy or completeness of any information/analysis and will be not responsible for any errors or omissions or for the results obtained from the use of such information/analysis.
8. All the contents for the publication have been culled from various authentic sources and Datanet reasonably believes such sources to be reliable, but does not make any representations, express or implied as to the accuracy or fitness of use of such information. The information or contents of the information/analysis do not constitute advice and should not be relied upon in making (or refraining from making) any decision. Any reliance placed upon the information provided by Datanet is the sole responsibility and strictly at the user's risk.
9. In no event will Datanet be liable for any damages (including, without limitation, damages for loss of business projects, or loss of profits) arising in contract, tort or otherwise from the use of or inability to use any of its contents, or from any action taken (or refrained from being taken) as a result of using the analysis or any of its contents. Datanet its directors, owners, editors, officials, employees, distributor and agents or any associate will not be liable for any errors in the information contained or any consequences arising from the use of the contents of the provided information/analysis.
10. If any provision of these terms and conditions is held invalid or illegal or unenforceable for any reason by any court of competent jurisdiction, such provision shall be severed and the remainder of provisions of the terms and conditions shall continue in full force and effect as if the Term of Use had been executed with the invalid, illegal or unenforceable provision eliminated.
11. If there are any discrepancies in the information provided, please bring it to attention of Datanet for suitable rectification measures.

Buy Online This Complete Book At
Datanet India eBooks Store

www.indiastatpublications.com

or go directly at

[http://www.indiastatpublications.com/
Assembly_factbook/Telangana/Nalgonda/ Suryapet](http://www.indiastatpublications.com/Assembly_factbook/Telangana/Nalgonda/Suryapet)

 **indiastat**elections

ISBN : 978-93-6219-758-0



9 789362 197580