



West Bengal

Assembly Factbook™

Chunchura Assembly Constituency



Key Electoral Data of Chunchura
Assembly Constituency (Vidhan Sabha)

West Bengal

Assembly Factbook™

Chunchura Assembly Constituency



Chunchura Vidhan Sabha

Editor & Director

Dr. R.K. Thukral

Research Editor

Dr. Shafeeq Rahman

**Compiled, Researched and Published by
Datanet India Pvt. Ltd.**

D-100, 1st Floor,

Okhla Industrial Area, Phase-I,
New Delhi- 110020.

Ph.: 91-11- 43580781-84

Email : support@indiastatpublications.com

Website : www.indiastatelections.com

Online Book Store :

www.indiastatpublications.com

Report No. : AFB/WB-190-0123

ISBN : 978-93-5293-623-6

First Edition : January, 2018

Sixth Updated Edition : January, 2023

Price : Rs. 11500/-

US\$ 310

© Datanet India Pvt. Ltd.

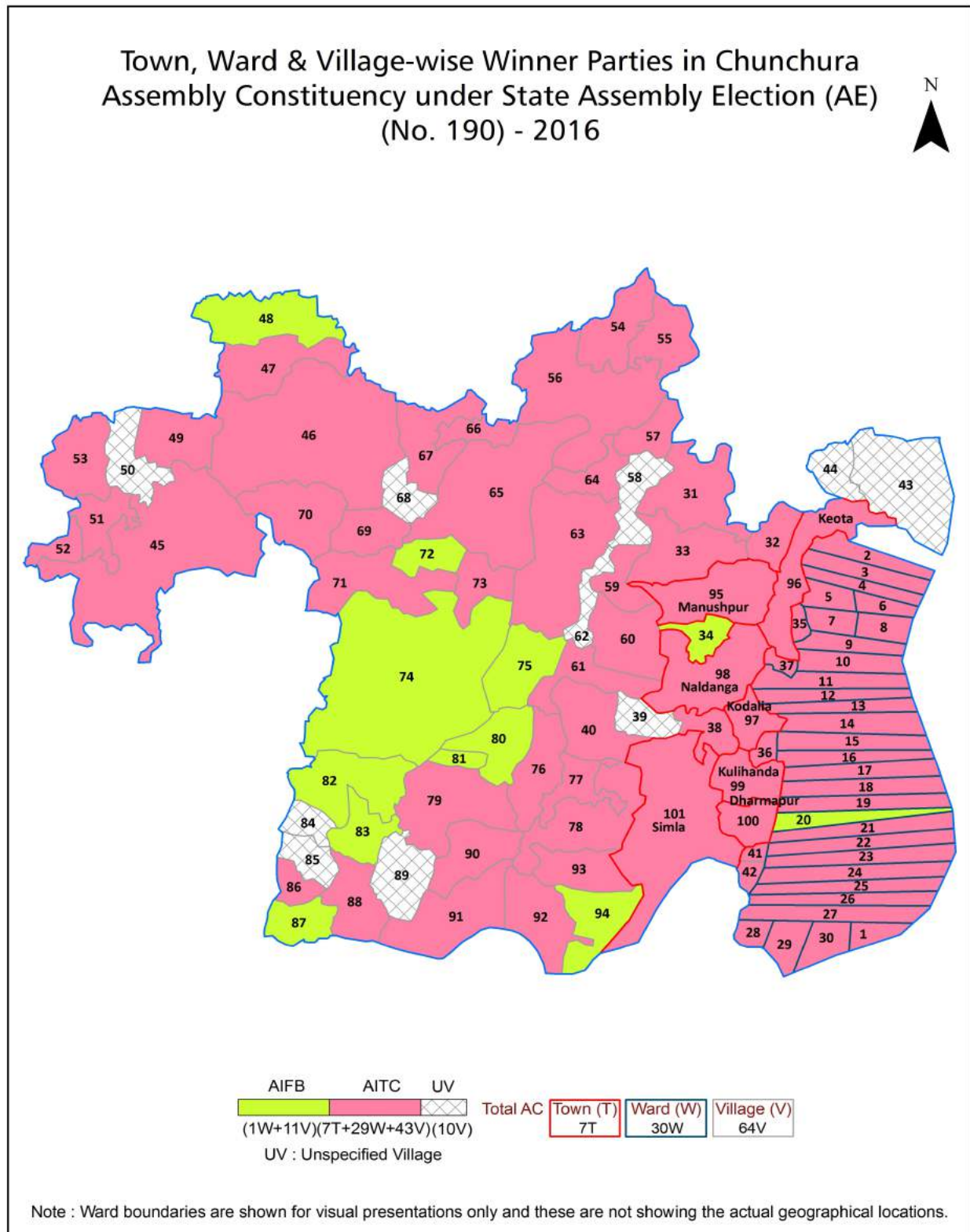
All rights reserved. No part of this book may be reproduced, stored in a retrieval system or transmitted in any form or by any means, mechanical photocopying, photographing, scanning, recording or otherwise without the prior written permission of the publisher. Please refer to Disclaimer at page no. 207 for the use of this publication.

Printed in India

Contents

No.	Particulars	Page No.
	Introduction	
1	Assembly Constituency - (Vidhan Sabha) at a Glance Features of Assembly as per Delimitation Commission of India (2008)	1-2
	Location and Political Maps	
2	Location Map Boundaries of Assembly Constituency - (Vidhan Sabha) in District Boundaries of Assembly Constituency under Parliamentary Constituency - (Lok Sabha) Town, Ward & Village-wise Winner Parties- 2021, 2019, 2016, 2014, 2011 and 2009	3-10
	Administrative Setup (2011)	
3	District Sub-district Towns Villages Inhabited Villages Uninhabited Villages Village Panchayat Intermediate Panchayat	11-15
	Demographics (2011)	
4	Population Households Rural/Urban Population Towns, Ward and Villages by Population Size Sex Ratio (Total & 0-6 Years) Religious Population Social Population Literacy Rate	16-18
	Electoral Features	
5	Important Dates of Last Elections Held Electors by Gender Service Electors Voters Voters Turnout Polling Stations & Average Number of Electors per Polling Station Electors by Age Group Present Elected Representatives	19-24
	Historical Summary Election Results	
6	Vote Share of Major Parties Winning Margin (Number & Percentage) Polarity of Parties Summary Result of Assembly Segment of Parliamentary Elections 2019, 2014, 2009, 2004 and 1999 Summary Result of Assembly Elections 2021, 2016, 2011, 2006, 2001, 1996, 1991, 1987, 1982, 1977, 1972, 1971, 1969, 1967, 1962, 1957 and 1952	25-50
	Polling Station Level Election Results	
7	Name and Number of Polling Station 2021, 2019, 2016, 2014, 2011 and 2009 Polling Station-wise Electors, Voters & Voters Turnout 2021, 2019, 2016, 2014, 2011 and 2009 Polling Station wise Elections Results 2021, 2019, 2016, 2014, 2011 and 2009	51-187
	Share of Assembly Constituency	
8	Share of Assembly Constituency - (Vidhan Sabha) in State, District and Parliamentary Constituency - (Lok Sabha)	188
	Socio-Economic Amenities (2011)	
9	Access to Administrative Units Agricultural, Manufacturing and Industrial Commodities Demographic Indicators Education Health & Manpower Drinking Water Supply Sanitation Entertainment and Recreations Infrastructure Power Food Allocation Distribution and Marketing of Agriculture Commodities Infrastructure Transport and Road Infrastructure Communication Banking and Financial Services Land Use Irrigation Source	190-204
10	Abbreviation & Sources	205-206
11	Disclaimer	207

Location & Political Map



Administrative Setup

List of Village Panchayat & Intermediate Panchayat (Block) Name - 2011

Village Name	Village Panchayat Name	Intermediate Panchayat Name
Akna	Mogra-I	Chinsurah - Magra
Amarpur	Sugandha	Polba - Dadpur
Amdabad	Sugandha	Polba - Dadpur
Ampala	Rajhat	Polba - Dadpur
Atpukur	Rajhat	Polba - Dadpur
Bahir Ranagachha	Sugandha	Polba - Dadpur
Balagarh (P)	-	Chinsurah - Magra
Barakpur Naopara	Rajhat	Polba - Dadpur
Baral Malimpur	Rajhat	Polba - Dadpur
Belgare	Polba	Polba - Dadpur
Benabharui	Digsuihoyera	Chinsurah - Magra
Bhatua	Rajhat	Polba - Dadpur
Bhaturia	Rajhat	Polba - Dadpur
Bhoagachhi	Rajhat	Polba - Dadpur
Bhushnara	Sugandha	Polba - Dadpur
Binodpur	Sugandha	Polba - Dadpur
Charkona	Saptagram	Chinsurah - Magra
Chautara	Rajhat	Polba - Dadpur
Chinchurah (P)	-	Chinsurah - Magra
Debanandapur	Debanandapur	Chinsurah - Magra
Dhuliara	Rajhat	Polba - Dadpur
Dogachhia	Sugandha	Polba - Dadpur
Erenga	Sugandha	Polba - Dadpur
Goaljor	Polba	Polba - Dadpur
Gotu	Sugandha	Polba - Dadpur
Hosenabad	Rajhat	Polba - Dadpur
Iswarbaha	Bandel	Chinsurah - Magra
Jadabpur	Sugandha	Polba - Dadpur
Jagannathbati	Sugandha	Polba - Dadpur

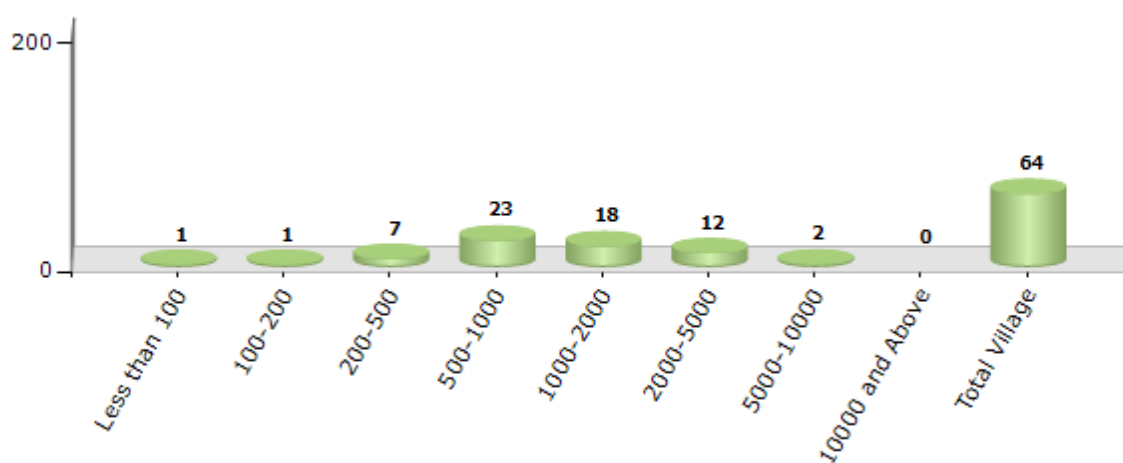
Contd....

Demographics

Number of Villages by Population Size - 2011

Less than 100	100-200	200-500	500-1000	1000-2000	2000-5000	5000-10000	10000 and Above	Total Village
1	1	7	23	18	12	2	0	64

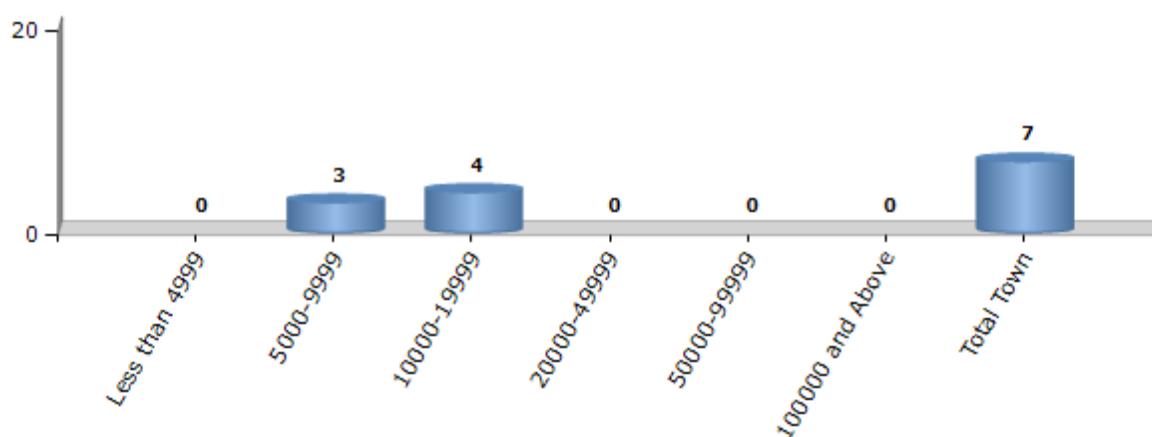
Number of Villages by Population Size - 2011



Number of Towns by Population Size - 2011

Less than 4999	5000-9999	10000-19999	20000-49999	50000-99999	100000 and Above	Total Town
0	3	4	0	0	0	7

Number of Towns by Population Size - 2011

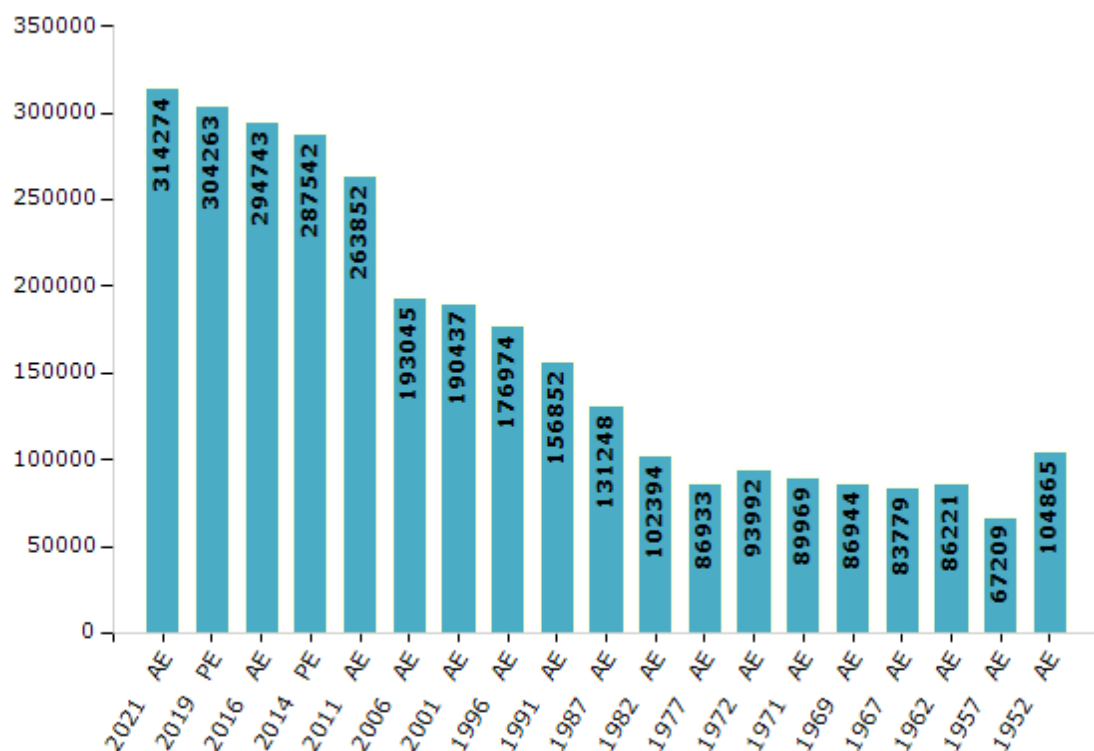


Electoral Features

Electors by Male & Female

Year	Male	Female	Others	Total	Year	Male	Female	Others	Total
2021 AE	155673	158587	14	314274	1991 AE	87719	69133	-	156852
2019 PE	151504	152750	9	304263	1987 AE	72283	58965	-	131248
2016 AE	147613	147119	11	294743	1982 AE	55311	47083	-	102394
2014 PE	145489	142049	4	287542	1977 AE	48356	38577	-	86933
2011 AE	134540	129312	0	263852	1972 AE	54205	39787	-	93992
2009 PE	-	-	-	-	1971 AE	52182	37787	-	89969
2006 AE	100265	92780	-	193045	1969 AE	47812	39132	-	86944
2004 PE	-	-	-	-	1967 AE	-	-	-	83779
2001 AE	98806	91631	-	190437	1962 AE	-	-	-	86221
1999 PE	-	-	-	-	1957 AE	-	-	-	67209
1996 AE	89249	87725	-	176974	1952 AE	-	-	-	104865

Number of Electors



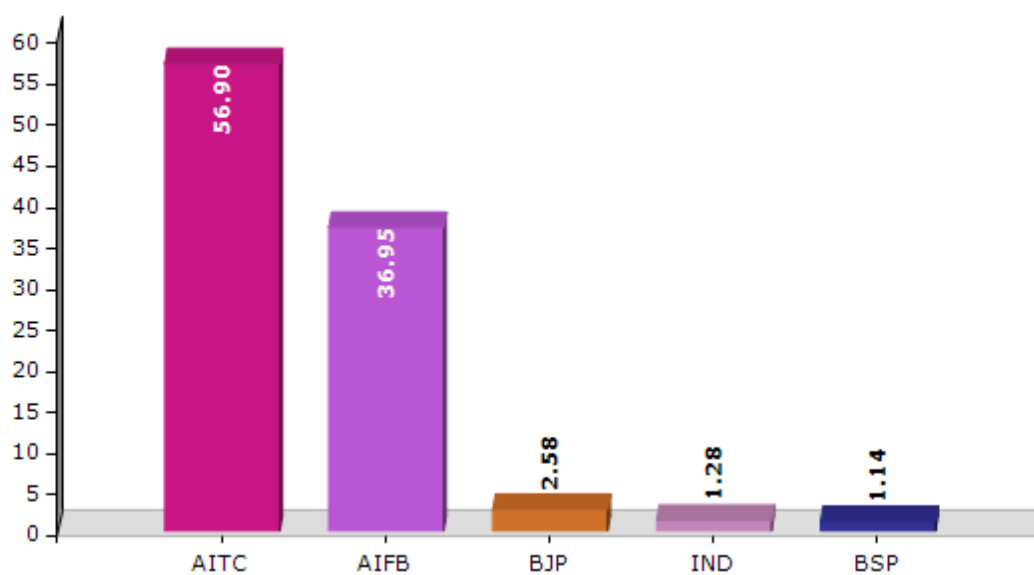
Note : AE : Assembly Election, PE : Assembly Segment of Parliamentary Election

Historical Summary Election Results

Summary Result of Assembly Election - 2011

Candidate Name	Party	Votes	Votes %
Asit Mazumder (Tapan)	AITC	127206	56.9
Naren Dey	AIFB	82614	36.95
Champa Chakraborty	BJP	5761	2.58
Sajal Samaddar	IND	2860	1.28
Suryya Kanta Ray	BSP	2550	1.14
Arindam (Atanu) Chakraborty	PDS	1533	0.69
Lakshmi Ram Saren	JDP	1042	0.47

Votes Percentage of Top Parties - 2011



Polling Station Level Election Results

Number and Name of Polling Stations (PS) (2016)

Number of Polling Stations	Name of Polling Stations	Number of Polling Stations	Name of Polling Stations
1	Goyaljore Pry. School R-1	22	Bhoyagachi Jr. Basic School (R-2)
2	Saran Pur High School R-1	23	Bhathuria Pry. School R-1
3	Sunka Pry. School (R-1)	24	Choutara Pry. School R-1
4	Sunka Pry. School(R-2)	25	Hosenabad Pry. School R-1
5	Pownan Radharani Uchhavidyalaya (R-1)	26	Milchita Pry. School R-1
6	Pownan Radharani Uchhavidyalaya (R-2)	27	Ampala Pry. School R-1
7	Pownan Siddheswari Pry. School(R-1)	28	Bairnagar Jr. Basic School R-1
8	Pownan Siddheswari Pry. School(R-2)	29	Chatimtala Pry. School R-1
9	Uchai Pry. School (R-1)	30	Rajeswaripur Pry. School R-1
10	Uchai Pry. School (R-2)	31	Rajhat Pry. Vidyalaya R-1
11	Belgore Pry. School R-1	32	Rajhat Ucca Vidyalay (Paschim) R-1
12	Polba Uchha Vidyalaya (R-1)	33	Rajhat Dakshinpara Pry. School R-1
13	Polba Uchha Vidyalaya (R-2)	34	Korola Jr. Basic School R-1
14	Polba Uchha Balika Vidyalaya(R-1)	35	Malimpur Pry. School R-1
15	Polba Uchha Balika Vidyalaya(R-2)	36	Barakpur Pry. School R-1
16	Khasundi Para Pry. School (R-1)	37	Bhatua Satyacharan Primaryschool R-1
17	Khasundi Para Pry. School (R-2)	38	Rajhat G.P. Commercial Buildingr-1
18	Polba Dhanar Para Pry. School(R-1)	39	Debanandapur Saratchandra Siksha Niketan Room-1
19	Polba Dhanar Para Pry. School(R-2)	40	Debanandapur Sharatchandra Siksha Niketan, Room-2
20	Atpukur Pry. School R-1	41	Debanandapur Sharatchandra Siksha Niketan, Room-3
21	Bhoyagachi Jr. Basic School (R-1)	42	Debanandapur Sharatchandra Siksha Niketan, Room-4

Contd....

Polling Station Level Election Results

Polling Station-wise Votes Secured by Overall Top Five Parties in Chunchura Assembly in Assembly Election (AE) under Hooghly Parliamentary Constituency in West Bengal (2016)

Number of Polling Station	Winner - Asit Mazumder (Tapan) (AITC)	Runner-up - Dr. Pranab Kumar Ghosh (AIFB)	3rd - Champa Chakraborty (BJP)	4th - Paban Mazumder (SUCI)	5th - Deb Kanta Sikdar (IND)	NOTA	Other	Total Votes Secured
36	388	233	69	12	3	9	0	714
37	438	359	90	8	4	14	0	913
38	482	220	52	7	6	18	0	785
39	354	163	48	13	3	8	0	589
40	280	260	33	4	4	9	0	590
41	454	189	52	5	2	10	0	712
42	235	223	42	8	4	15	0	527
43	428	210	46	2	3	10	0	699
44	379	181	35	4	1	6	0	606
45	435	291	85	8	2	15	0	836
46	504	239	150	6	5	29	0	933
47	475	282	118	5	3	25	0	908
48	270	240	69	6	1	20	0	606
49	281	224	79	10	0	29	0	623
50	380	192	60	6	4	17	0	659
51	354	202	94	1	2	26	0	679
52	393	266	65	6	3	12	0	745
53	482	249	74	5	4	16	0	830
54	477	237	76	5	0	20	0	815
55	280	561	62	21	9	16	0	949
56	209	231	53	4	6	4	0	507
57	383	114	119	4	2	9	0	631
57A	299	82	112	2	3	4	0	502
58	485	190	129	3	4	15	0	826
59	290	472	97	9	6	17	0	891
60	164	157	44	5	3	8	0	381
61	256	161	96	3	6	12	0	534
62	216	93	172	6	2	8	0	497
63	373	271	202	15	5	11	0	877
64	553	410	26	8	11	23	0	1031
65	171	117	39	1	2	4	0	334
66	265	215	154	11	7	22	0	674
67	444	150	161	7	6	14	0	782
68	201	158	116	3	3	11	0	492
69	198	108	186	6	3	8	0	509

Contd....

Polling Station Level Election Results

Winner, Runner-up and 3rd Party Position & Winning Margin According to Polling Stations in Churchura Assembly in Assembly Election (AE) under Hooghly Parliamentary Constituency in West Bengal (2016)

Polling Station Number	Winner Party	Winner Votes (%)	Runner-up Party	Runner-up Votes (%)	Winning Margin Votes (%)	Third Party	Third Party Votes (%)	Other Votes (%)
74	AITC	321 (36.98)	AIFB	307 (35.37)	14 (1.61)	BJP	188 (21.66)	52 (5.99)
75	AITC	353 (61.28)	BJP	108 (18.75)	245 (42.53)	AIFB	101 (17.53)	14 (2.43)
76	AITC	333 (60.22)	BJP	108 (19.53)	225 (40.69)	AIFB	99 (17.9)	13 (2.35)
77	AITC	354 (47.26)	AIFB	248 (33.11)	106 (14.15)	BJP	119 (15.89)	28 (3.74)
78	AITC	306 (41.41)	AIFB	248 (33.56)	58 (7.85)	BJP	146 (19.76)	39 (5.28)
79	AIFB	353 (37.63)	AITC	348 (37.1)	5 (0.53)	BJP	191 (20.36)	46 (4.9)
80	AITC	274 (51.6)	AIFB	126 (23.73)	148 (27.87)	BJP	116 (21.85)	15 (2.82)
81	AITC	204 (45.13)	AIFB	157 (34.73)	47 (10.4)	BJP	73 (16.15)	18 (3.98)
82	AITC	198 (47.14)	AIFB	132 (31.43)	66 (15.71)	BJP	68 (16.19)	22 (5.24)
83	AITC	295 (58.88)	BJP	94 (18.76)	201 (40.12)	AIFB	92 (18.36)	20 (3.99)
84	AIFB	428 (50.71)	AITC	300 (35.55)	128 (15.16)	BJP	72 (8.53)	44 (5.21)
85	AITC	365 (47.65)	AIFB	230 (30.03)	135 (17.62)	BJP	148 (19.32)	23 (3)
86	AITC	339 (47.48)	AIFB	312 (43.7)	27 (3.78)	BJP	38 (5.32)	25 (3.5)
87	AITC	364 (52.3)	AIFB	272 (39.08)	92 (13.22)	BJP	42 (6.03)	18 (2.59)
88	AITC	382 (53.88)	AIFB	248 (34.98)	134 (18.9)	BJP	63 (8.89)	16 (2.26)
89	AITC	265 (47.58)	AIFB	224 (40.22)	41 (7.36)	BJP	48 (8.62)	20 (3.59)
90	AIFB	247 (48.05)	AITC	214 (41.63)	33 (6.42)	BJP	37 (7.2)	16 (3.11)
91	AIFB	283 (54.95)	AITC	184 (35.73)	99 (19.22)	BJP	34 (6.6)	14 (2.72)
92	AIFB	325 (49.92)	AITC	241 (37.02)	84 (12.9)	BJP	61 (9.37)	24 (3.69)
93	AIFB	252 (48.93)	AITC	238 (46.21)	14 (2.72)	BJP	10 (1.94)	15 (2.91)
94	AITC	288 (51.52)	AIFB	228 (40.79)	60 (10.73)	BJP	28 (5.01)	15 (2.68)
95	AITC	463 (55.32)	AIFB	279 (33.33)	184 (21.99)	BJP	61 (7.29)	34 (4.06)
96	AITC	462 (47.88)	AIFB	341 (35.34)	121 (12.54)	BJP	132 (13.68)	30 (3.11)
97	AITC	343 (56.05)	AIFB	205 (33.5)	138 (22.55)	BJP	39 (6.37)	25 (4.08)
98	AITC	554 (54.1)	AIFB	348 (33.98)	206 (20.12)	BJP	94 (9.18)	28 (2.73)
99	AIFB	267 (41.33)	AITC	256 (39.63)	11 (1.7)	BJP	112 (17.34)	11 (1.7)
100	AITC	240 (52.06)	AIFB	176 (38.18)	64 (13.88)	BJP	32 (6.94)	13 (2.82)
101	AIFB	409 (51.13)	AITC	293 (36.63)	116 (14.5)	BJP	55 (6.88)	43 (5.38)
102	AIFB	368 (48.74)	AITC	315 (41.72)	53 (7.02)	BJP	38 (5.03)	34 (4.5)
103	AITC	295 (49.5)	AIFB	243 (40.77)	52 (8.73)	BJP	41 (6.88)	17 (2.85)
104	AITC	310 (50.57)	AIFB	271 (44.21)	39 (6.36)	BJP	20 (3.26)	12 (1.96)
105	AIFB	293 (51.58)	AITC	254 (44.72)	39 (6.86)	BJP	12 (2.11)	9 (1.58)
106	AIFB	157 (56.88)	AITC	110 (39.86)	47 (17.02)	BJP	6 (2.17)	3 (1.09)
107	AITC	408 (53.19)	AIFB	325 (42.37)	83 (10.82)	BJP	21 (2.74)	13 (1.69)
108	AIFB	591 (60.49)	AITC	327 (33.47)	264 (27.02)	BJP	29 (2.97)	30 (3.07)
109	AITC	414 (55.8)	AIFB	202 (27.22)	212 (28.58)	BJP	109 (14.69)	17 (2.29)
110	AITC	381 (50.73)	AIFB	329 (43.81)	52 (6.92)	BJP	29 (3.86)	12 (1.6)

Contd....

Socio-Economic Amenities - Rural

Access to Education Facilities

Particulars	Number of Villages (% of Population)				
	Available	Not Available	If Not Available (Distance of Nearest Facility)		
			A	B	C
Govt. Primary School	50 (88)	14 (12)	0 (0)	0 (0)	0 (0)
Private Primary School	2 (6)	62 (94)	0 (0)	0 (0)	0 (0)
Govt. Middle School	15 (36)	49 (64)	7 (15)	0 (0)	0 (0)
Private Middle School	3 (3)	61 (97)	0 (0)	0 (0)	0 (0)
Govt. Secondary School	12 (32)	52 (68)	43 (58)	0 (0)	0 (0)
Private Secondary School	1 (1)	63 (99)	0 (0)	0 (0)	0 (0)
Govt. Senior Secondary School	7 (21)	57 (79)	37 (56)	6 (6)	0 (0)
Private Senior Secondary School	1 (1)	63 (99)	0 (0)	0 (0)	0 (0)
Govt. Arts and Science Degree College	1 (7)	63 (93)	24 (33)	20 (31)	4 (7)
Private Arts and Science Degree College	0 (0)	64 (100)	0 (0)	0 (0)	0 (0)
Govt. Engineering College	0 (0)	64 (100)	6 (5)	18 (24)	3 (5)
Private Engineering College	1 (1)	63 (99)	14 (22)	5 (10)	0 (0)
Govt. Medicine College	1 (2)	63 (98)	0 (0)	1 (4)	11 (22)
Private Medicine College	0 (0)	64 (100)	0 (0)	0 (0)	0 (0)
Govt. Management Institute	0 (0)	64 (100)	0 (0)	0 (0)	4 (9)
Private Management Institute	0 (0)	64 (100)	23 (31)	13 (21)	1 (1)
Govt. Polytechnic	2 (3)	62 (97)	17 (23)	7 (14)	1 (1)
Private Polytechnic	1 (1)	63 (99)	10 (17)	12 (13)	0 (0)
Govt. Vocational Training School/ITI	1 (1)	63 (99)	20 (27)	16 (29)	9 (10)
Private Vocational Training School/ITI	0 (0)	64 (100)	1 (1)	0 (0)	0 (0)
Govt. Non Formal Training Centre	0 (0)	64 (100)	12 (14)	1 (1)	0 (0)
Private Non Formal Training Centre	0 (0)	64 (100)	2 (4)	0 (0)	0 (0)
Govt. School For Disabled	0 (0)	64 (100)	0 (0)	0 (0)	2 (3)
Private School For Disabled	1 (1)	63 (99)	9 (9)	9 (23)	1 (4)
Government Others	0 (0)	64 (100)	0 (0)	0 (0)	0 (0)
Private Others	0 (0)	64 (100)	0 (0)	0 (0)	0 (0)

Note : Distance A : Less than 5 km; B : Between 5-10 km; C : 10+ km.; Source : Data Analysis is based on 2011 Census.

DISCLAIMER

The Terms of Use and Disclaimer of Datanet India Private Limited (hereinafter referred to as "Datanet") for use of this analysis report of **Chunchura Assembly Constituency (Chunchura Vidhan Sabha)** :-

1. **Assembly Factbook™** is a Registered Trade Mark owned by Datanet.
2. All the maps are sketched and graphical representation only and have not been drawn to the scale and also not to represent the actual geographical area or boundary of the unit.
3. The data for the aforesaid analysis is based on authentic sources and has been culled from the various publications of Census, CSO and NSSO for district and block level data, various central and state government departments, Central & State Elections Commissions and the concerned Returning Officers' releases, Electoral Rolls, Election results and allied publications, internal assessment, surveys, estimates and analysis. Therefore, certain adjustment of data at micro level may have been done to arrive closer to the macro data.
4. Data have been provided on an "As Is" and "As AVAILABLE" basis
5. The colours shown in the maps or diagram and charts of a particular party, alliance or AC are indicative and do not represent them.
6. This publication which includes maps, sheets, graphs and data would be the property under copyright of Datanet only. The user may use these for its internal study, analysis and research purposes. It's public display, re-selling or any commercial uses by the user are not allowed.
7. Datanet has taken due care and caution in compilation and processing of data and allied information, but does not guarantee the accuracy, adequacy or completeness of any information/analysis and will be not responsible for any errors or omissions or for the results obtained from the use of such information/analysis.
8. All the contents for the publication have been culled from various authentic sources and Datanet reasonably believes such sources to be reliable, but does not make any representations, express or implied as to the accuracy or fitness of use of such information. The information or contents of the information/analysis do not constitute advice and should not be relied upon in making (or refraining from making) any decision. Any reliance placed upon the information provided by Datanet is the sole responsibility and strictly at the user's risk.
9. In no event will Datanet be liable for any damages (including, without limitation, damages for loss of business projects, or loss of profits) arising in contract, tort or otherwise from the use of or inability to use any of its contents, or from any action taken (or refrained from being taken) as a result of using the analysis or any of its contents. Datanet its directors, owners, editors, officials, employees, distributor and agents or any associate will not be liable for any errors in the information contained or any consequences arising from the use of the contents of the provided information/analysis.
10. If any provision of these terms and conditions is held invalid or illegal or unenforceable for any reason by any court of competent jurisdiction, such provision shall be severed and the remainder of provisions of the terms and conditions shall continue in full force and effect as if the Term of Use had been executed with the invalid, illegal or unenforceable provision eliminated.
11. If there are any discrepancies in the information provided, please bring it to attention of Datanet for suitable rectification measures.

Buy Online This Complete Book At
Datanet India eBooks Store

www.indiastatpublications.com

or go directly at

[http://www.indiastatpublications.com/
Assembly_factbook/West_Bengal/Hooghly/Chunchura](http://www.indiastatpublications.com/Assembly_factbook/West_Bengal/Hooghly/Chunchura)

 **indiastat**elections

ISBN : 978-93-5293-623-6

