



Bihar

Assembly Factbook™

Araria Assembly Constituency



Key Electoral Data of Araria
Assembly Constituency (Vidhan Sabha)

Bihar

Assembly Factbook™

Araria Assembly Constituency



Araria Vidhan Sabha

Editor & Director

Dr. R.K. Thukral

Research Editor

Dr. Shafeeq Rahman

Compiled, Researched and Published by Datanet India Pvt. Ltd.

D-100, 1st Floor,

Okhla Industrial Area, Phase-I,
New Delhi- 110020.

Ph.: 91-11- 43580781-84

Email : support@indiastatpublications.com

Website : www.indiastatelections.com

Online Book Store :

www.indiastatpublications.com

Report No. : AFB/BR-049-0125

ISBN : 978-93-5301-808-5

First Edition : January, 2018

Eighth Updated Edition : January, 2025

Price : Rs. 11500/-

US\$ 310

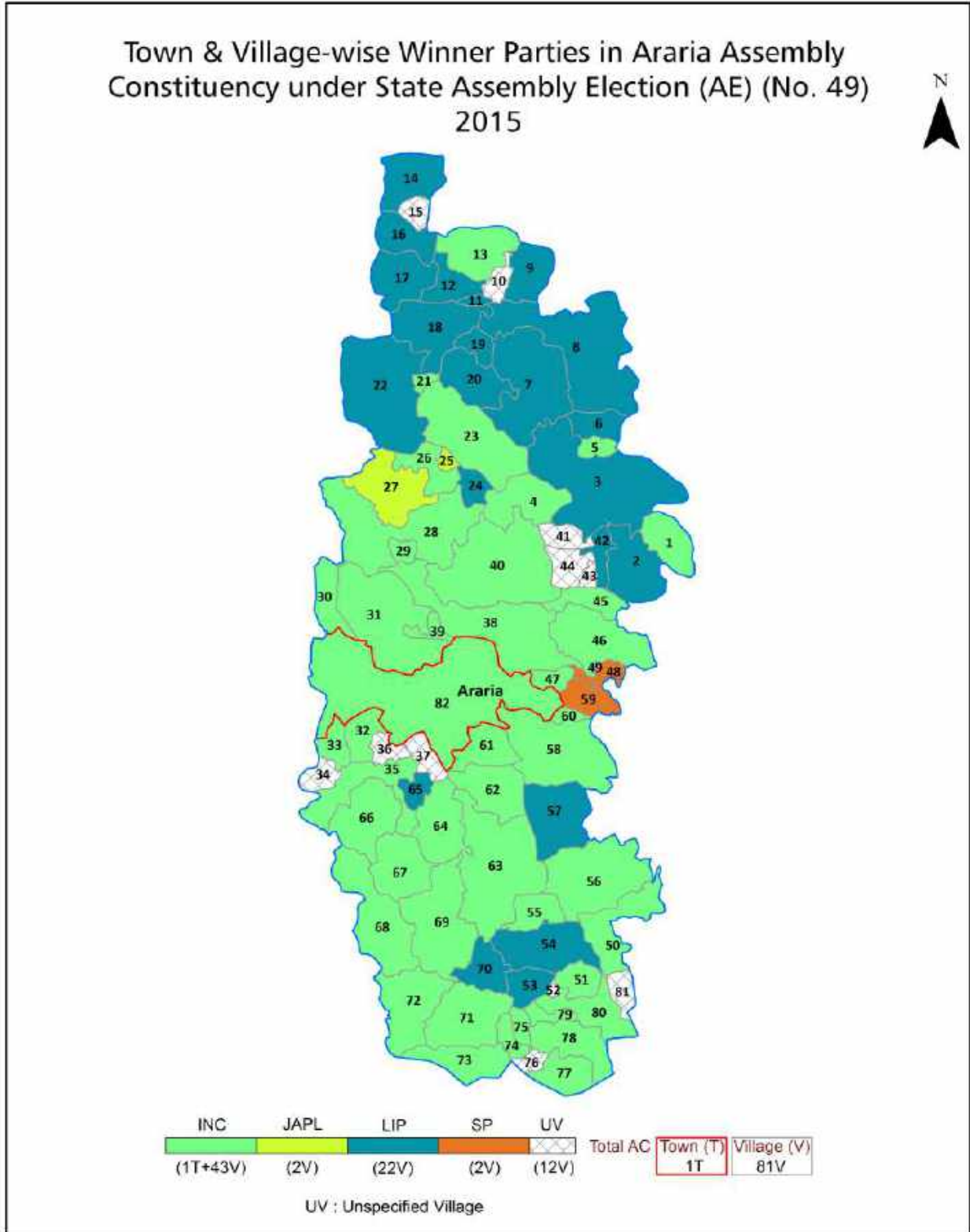
© Datanet India Pvt. Ltd.

All rights reserved. No part of this book may be reproduced, stored in a retrieval system or transmitted in any form or by any means, mechanical photocopying, photographing, scanning, recording or otherwise without the prior written permission of the publisher. Please refer to Disclaimer at page no. 245 for the use of this publication.

Printed in India

No.	Particulars	Page No.
	Introduction	
1	Assembly Constituency - (Vidhan Sabha) at a Glance Features of Assembly as per Delimitation Commission of India (2008)	1-2
	Location and Political Maps	
2	Location Map Boundaries of Assembly Constituency - (Vidhan Sabha) in District Boundaries of Assembly Constituency under Parliamentary Constituency - (Lok Sabha) Town & Village-wise Winner Parties- 2024, 2020, 2019, 2015, 2014, 2010 and 2009	3-11
	Administrative Setup (2011)	
3	District Sub-district Towns Villages Inhabited Villages Uninhabited Villages Village Panchayat Intermediate Panchayat	12-15
	Demographics (2011)	
4	Population Households Rural/Urban Population Towns and Villages by Population Size Sex Ratio (Total & 0-6 Years) Religious Population Social Population Literacy Rate	16-17
	Electoral Features	
5	Important Dates of Last Elections Held Electors by Gender Service Electors Voters Voters Turnout Polling Stations & Average Number of Electors per Polling Station Electors by Age Group Present Elected Representatives	18-23
	Historical Summary Election Results	
6	Vote Share of Major Parties Winning Margin (Number & Percentage) Polarity of Parties Summary Result of Assembly Segment of Parliamentary Elections 2024, 2019, 2014, 2009, 2004 and 1999 Summary Result of Assembly Elections 2020, 2015, 2010, 2005 (Oct), 2005 (Feb), 2000, 1995, 1990, 1985, 1980, 1977, 1972, 1969, 1967, 1962, 1957 and 1952	24-49
	Polling Station Level Election Results	
7	Name and Number of Polling Station 2024, 2020, 2019, 2015, 2014, 2010 and 2009 Polling Station-wise Electors, Voters & Voters Turnout 2024, 2020, 2019, 2015, 2014, 2010 and 2009 Polling Station wise Elections Results 2024, 2020, 2019, 2015, 2014, 2010 and 2009	50-224
	Share of Assembly Constituency	
8	Share of Assembly Constituency - (Vidhan Sabha) in State, District and Parliamentary Constituency - (Lok Sabha)	225
	Socio-Economic Amenities (2011)	
9	Access to Administrative Units Agricultural, Manufacturing and Industrial Commodities Demographic Indicators Education Health & Manpower Drinking Water Supply Sanitation Entertainment and Recreations Infrastructure Power Food Allocation Distribution and Marketing of Agriculture Commodities Infrastructure Transport and Road Infrastructure Communication Banking and Financial Services Land Use Irrigation Source	227-241
10	Abbreviation & Sources	242-244
11	Disclaimer	245

Location & Political Map



Administrative Setup

List of Village Panchayat & Intermediate Panchayat (Block) Name - 2011

Village Name	Village Panchayat Name	Intermediate Panchayat Name
Araria	Araria Basti	Araria
Azamnagar	Kusiargaon	Araria
Azmatpur	Basantpur	Araria
Bahgi	Pokharia	Araria
Bairgachhi	Belwa	Araria
Bangawan	Bangama	Araria
Bansbari	Bansbari	Araria
Barakamatchistipur	Haria	Araria
Basantpur	Basantpur	Araria
Baturbari	Baturbari	Araria
Belbari	Araria Basti	Araria
Belwa	Belwa	Araria
Bhagmohabbat	Hyatpur	Araria
Bhagpuraini	Kismat Khawaspur	Araria
Bhagsadullah Gachh Kola	Madanpur(W)	Araria
Bishunpur	Kusiargaon	Araria
Bochi	Bochi	Araria
Bochi	Kamaldaha	Araria
Chanderdai	Chanderdai	Araria
Chanrarni	Bochi	Araria
Chatar	Chatar	Araria
Chikni	Chikni	Araria
Dabhara Jagir	Saranpur	Araria
Dabhra	Saranpur	Araria
Deoria	Paik Tola	Araria
Dhakia	Chikni	Araria
Diari	Diari	Araria
Domai	Gairda	Araria
Farasat	Pokharia	Araria

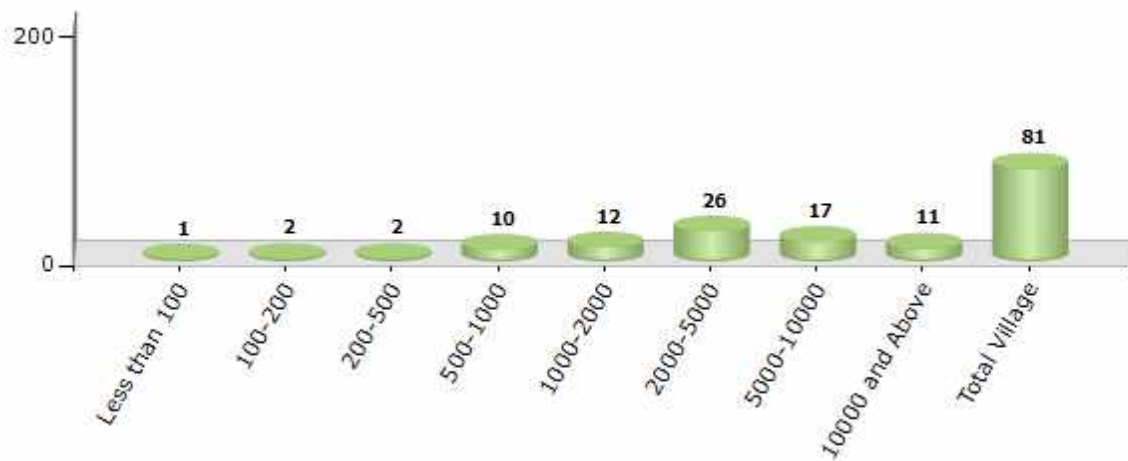
Contd....

Demographics

Number of Villages by Population Size - 2011

Less than 100	100-200	200-500	500-1000	1000-2000	2000-5000	5000-10000	10000 and Above	Total Village
1	2	2	10	12	26	17	11	81

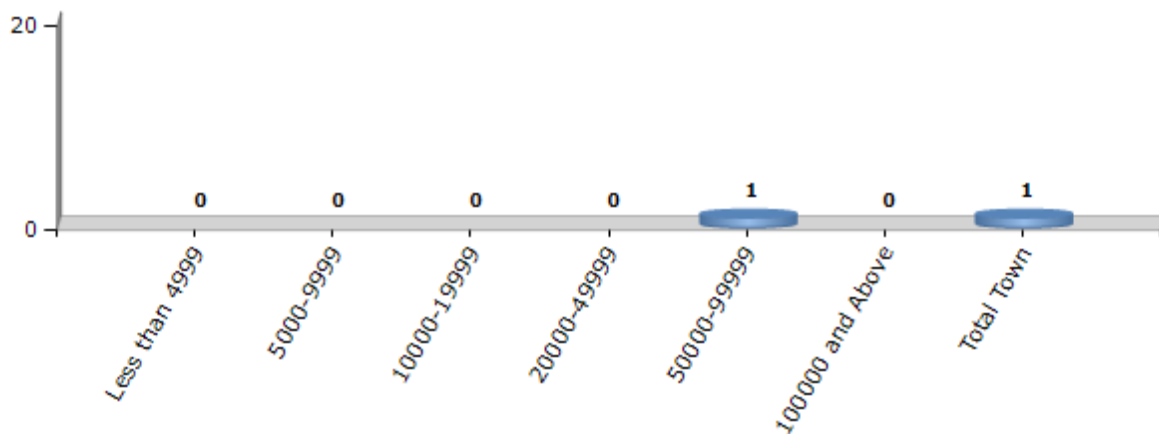
Number of Villages by Population Size - 2011



Number of Towns by Population Size - 2011

Less than 4999	5000-9999	10000-19999	20000-49999	50000-99999	100000 and Above	Total Town
0	0	0	0	1	0	1

Number of Towns by Population Size - 2011

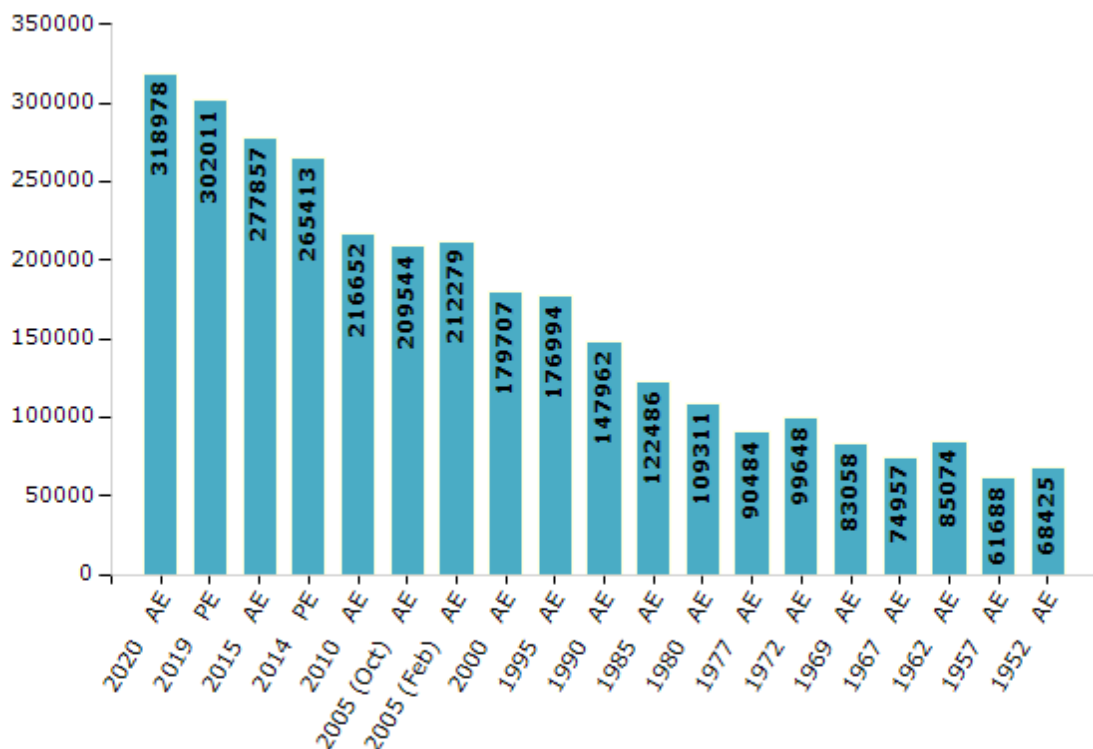


Electoral Features

Electors by Male & Female

Year	Male	Female	Others	Total	Year	Male	Female	Others	Total
2020 AE	165886	153081	11	318978	1995 AE	93557	83437	-	176994
2019 PE	158263	143737	11	302011	1990 AE	78338	69624	-	147962
2015 AE	147952	129898	7	277857	1985 AE	63013	59473	-	122486
2014 PE	141522	123887	4	265413	1980 AE	60127	49184	-	109311
2010 AE	115246	101406	0	216652	1977 AE	46689	43795	-	90484
2009 PE	-	-	-	-	1972 AE	51550	48098	-	99648
2005 (Oct) AE	110499	99045	-	209544	1969 AE	42389	40669	-	83058
2005 (Feb) AE	111799	100480	-	212279	1967 AE	-	-	-	74957
2004 PE	-	-	-	-	1962 AE	-	-	-	85074
2000 AE	95440	84267	-	179707	1957 AE	-	-	-	61688
1999 PE	-	-	-	-	1952 AE	-	-	-	68425

Number of Electors



Note : AE : Assembly Election, PE : Assembly Segment of Parliamentary Election

Historical Summary Election Results

Summary Result of Assembly Election - 2015

Candidate Name	Party	Votes	Votes %
Avidur Rahman	INC	92667	52.77
Ajay Kumar Jha	LJP	52623	29.97
Dr(Capt.) S. R. Jha	CPI	5898	3.36
Haider Yasin	JAPL	4862	2.77
Shad Ahmad	SP	3377	1.92
Vijay Kumar Mishra	IND	3113	1.77
Md. Sarvar Alam	IND	2714	1.55
Vinod Kumar	IND	2344	1.33
Mir Mansoor Alam	IND	918	0.52
Nasim	BMUP	691	0.39
Bhumanand Rishi	RaJPa	655	0.37
Pankaj Kumar Gupta	NJPI	541	0.31
Pramod Bachchan	JDR	439	0.25
Md. Izhar Alam	IND	425	0.24
Mahmood Reza	SoJP	417	0.24
	NOTA	3924	2.23

Polling Station Level Election Results

Number and Name of Polling Stations (PS) (2020)

Number of Polling Stations	Name of Polling Stations	Number of Polling Stations	Name of Polling Stations
1	Utkramit Madhya Vidhalya Motnaja (Uttar Bhag)	15	Utkramit Madhya Vidyalay Jamua Khamgara Purab Bahg
1A	Utkramit Madhya Vidhalya Motnaja (Uttar Bhag)	15A	Utkramit Madhya Vidyalay Jamua Khamgara Purab Bahg
2	Utkramit Madhya Vidhalya Motnaja (Dakshin Bhag)	16	Utkramit Madhya Vidyalay Fulbadi (Uttar Bhag)
3	Madhya Vidyalay Dabhra Sharanpur (Uttar Bhag)	17	Utkramit Madhya Vidyalay Fulbadi (Dakshin Bhag)
3A	Madhya Vidyalay Dabhra Sharanpur (Uttar Bhag)	18	L. S. Uccha Vidyalay Palasi ((Uttar Bhag)
4	Madhya Vidyalay Dabhra Sharanpur (Dakshin Bhag)	18A	L. S. Uccha Vidyalay Palasi ((Uttar Bhag)
4A	Madhya Vidyalay Dabhra Sharanpur (Dakshin Bhag)	19	L. S.Uccha Vidyalaya Palasi (Dakshin Bhag)
5	Brajamohan Prathamik Sah Madhymik Sanskrit Vidyalay Dabhara (Uttar Bhag)	19A	L. S.Uccha Vidyalaya Palasi (Dakshin Bhag)
6	Brajamohan Prathamik Sah Madhya Sanskrit Vidyalay Dabhara (Dakshin Bhag)	20	L.S. Uccha Vidyalay Palasi (Purab Bhag)
7	Utkramit Madhya Vidyalay Sukasaina (Uttar Bhag)	20A	L.S. Uccha Vidyalay Palasi (Purab Bhag)
8	Utkramit Madhya Vidyalay Sukasaina (Dakshin Bhag)	21	Prathmik Vidyalay Bhag Puraini Purab Bhag
8A	Utkramit Madhya Vidyalay Sukasaina (Dakshin Bhag)	21A	Prathmik Vidyalay Bhag Puraini Purab Bhag
9	Utkramit Madhya Vidyalay Tarabari (Uttar Bhag)	22	Madhya Vidyalay Tegachiya (Purab Bhag)
10	Utkramit Madhya Vidyalay Tarabari (Dakshin Bhag)	23	Madhya Vidyalay Tegachiya (Paschim Bhag)
11	Utkramit Madhya Vidyalay Jamua Gharbadi (Uttar Bhag)	24	Prathamik Vidyalay Shaikhara Tola Saguna
11A	Utkramit Madhya Vidyalay Jamua Gharbadi (Uttar Bhag)	25	Prathamikvidyalay Saguna
12	Utkramit Madhya Vidyalay Jamua Gharbari (Dakshin Bhag)	26	Utkramit Madhya Vidyalay Palasi B.M.C.(Purab Bhag)
12A	Utkramit Madhya Vidyalay Jamua Gharbari (Dakshin Bhag)	26A	Utkramit Madhya Vidyalay Palasi B.M.C.(Purab Bhag)
13	Madhya Vidyalay Jamua (Uttar Bhag)	27	Utkramit Madhya Vidyalay Palasi B.M.C.(Paschim Bhag)
13A	Madhya Vidyalay Jamua (Uttar Bhag)	27A	Utkramit Madhya Vidyalay Palasi B.M.C.(Paschim Bhag)
14	Madhya Vidyalay Jamua (Dakshin Bhag)	28	Prathamik Vidyalay Jhauwa Baturbari, (Uttar Bhag)

Contd....

Polling Station Level Election Results

Polling Station-wise Votes Secured by Overall Top Five Parties in Araria Assembly in Assembly Election (AE) under Araria Parliamentary Constituency in Bihar (2020)

Number of Polling Station	Winner - Abidur Rahman (INC)	Runner-up - Shagufta Azim (JD(U))	3rd - Md. Rashid Anwer (AIMIM)	4th - Chandra Shekhar Singh Baban (LJP)	5th - Amit Anand Jha (TPLRSP)	NOTA	Other	Total Votes Secured
24	418	50	5	16	2	6	4	501
25	11	364	11	10	11	23	16	446
26	409	25	2	10	1	10	8	465
26A	268	47	6	6	1	7	9	344
27	390	76	6	23	1	9	8	513
27A	262	48	1	4	0	4	4	323
28	215	72	57	7	5	10	6	372
28A	269	98	32	5	4	17	15	440
29	198	47	53	2	4	2	1	307
29A	205	45	42	1	3	4	9	309
30	133	186	6	4	2	9	10	350
30A	177	171	2	19	3	18	17	407
31	226	205	42	17	9	18	24	541
32	230	177	22	9	5	13	23	479
33	146	104	70	2	13	6	6	347
33A	68	137	28	2	2	1	5	243
34	217	129	115	5	13	9	21	509
35	378	102	30	6	4	10	8	538
36	402	100	34	10	4	10	8	568
37	402	71	21	10	5	11	8	528
37A	306	27	39	4	2	2	4	384
38	41	296	8	1	12	14	6	378
39	203	210	11	34	2	8	11	479
39A	35	54	6	11	0	3	1	110
40	127	309	9	7	2	25	29	508
41	120	379	10	16	2	20	21	568
42	314	23	28	7	5	6	1	384
42A	382	9	19	6	1	6	4	427
43	407	54	93	4	7	11	13	589
44	292	73	43	4	4	5	9	430
45	16	173	4	128	5	12	41	379
45A	32	136	5	24	2	13	23	235
46	12	211	7	220	6	24	73	553
47	9	164	1	94	0	12	32	312
47A	5	157	7	27	2	13	17	228

Contd....

Polling Station Level Election Results

Winner, Runner-up and 3rd Party Position & Winning Margin According to Polling Stations in Araria Assembly in Assembly Election (AE) under Araria Parliamentary Constituency in Bihar (2020)

Polling Station Number	Winner Party	Winner Votes (%)	Runner-up Party	Runner-up Votes (%)	Winning Margin Votes (%)	Third Party	Third Party Votes (%)	Other Votes (%)
48	JD(U)	241 (66.21)	LJP	51 (14.01)	190 (52.2)	INC	14 (3.85)	58 (15.93)
48A	JD(U)	141 (75.81)	LJP	13 (6.99)	128 (68.82)	IND (BP)	6 (3.23)	26 (13.98)
49	JD(U)	189 (54.94)	INC	80 (23.26)	109 (31.68)	LJP	35 (10.17)	40 (11.63)
49A	JD(U)	217 (53.85)	INC	84 (20.84)	133 (33.01)	LJP	21 (5.21)	81 (20.1)
50	INC	326 (75.81)	JD(U)	35 (8.14)	291 (67.67)	AIMIM	25 (5.81)	44 (10.23)
50A	INC	172 (68.8)	JD(U)	51 (20.4)	121 (48.4)	AIMIM	10 (4)	17 (6.8)
51	JD(U)	185 (49.87)	INC	108 (29.11)	77 (20.76)	LJP	21 (5.66)	57 (15.36)
51A	JD(U)	179 (51.14)	INC	85 (24.29)	94 (26.85)	LJP	18 (5.14)	68 (19.43)
52	JD(U)	333 (77.44)	INC	22 (5.12)	311 (72.32)	AIMIM	10 (2.33)	65 (15.12)
52A	JD(U)	228 (62.81)	INC	49 (13.5)	179 (49.31)	AIMIM	19 (5.23)	67 (18.46)
53	JD(U)	249 (54.61)	INC	123 (26.97)	126 (27.64)	LJP	23 (5.04)	61 (13.38)
54	JD(U)	226 (49.56)	INC	168 (36.84)	58 (12.72)	LJP	18 (3.95)	44 (9.65)
55	JD(U)	378 (78.1)	INC	27 (5.58)	351 (72.52)	LJP	16 (3.31)	63 (13.02)
56	JD(U)	425 (74.43)	INC	51 (8.93)	374 (65.5)	LJP	29 (5.08)	66 (11.56)
57	INC	209 (53.05)	JD(U)	148 (37.56)	61 (15.49)	AIMIM	6 (1.52)	31 (7.87)
57A	INC	175 (62.95)	JD(U)	89 (32.01)	86 (30.94)	AIMIM	5 (1.8)	9 (3.24)
58	JD(U)	108 (38.43)	INC	84 (29.89)	24 (8.54)	LJP	68 (24.2)	21 (7.47)
59	JD(U)	231 (79.66)	LJP	24 (8.28)	207 (71.38)	INC	23 (7.93)	12 (4.14)
60	JD(U)	231 (68.96)	INC	63 (18.81)	168 (50.15)	LJP	13 (3.88)	28 (8.36)
60A	INC	178 (50)	JD(U)	109 (30.62)	69 (19.38)	LJP	20 (5.62)	49 (13.76)
61	INC	234 (71.34)	JD(U)	51 (15.55)	183 (55.79)	AIMIM	23 (7.01)	20 (6.1)
61A	JD(U)	184 (78.3)	INC	15 (6.38)	169 (71.92)	LJP	14 (5.96)	22 (9.36)
62	JD(U)	336 (74.83)	LJP	28 (6.24)	308 (68.59)	INC	22 (4.9)	63 (14.03)
63	JD(U)	249 (74.77)	INC	34 (10.21)	215 (64.56)	LJP	11 (3.3)	39 (11.71)
63A	JD(U)	341 (70.31)	INC	57 (11.75)	284 (58.56)	LJP	35 (7.22)	52 (10.72)
64	INC	199 (66.78)	JD(U)	49 (16.44)	150 (50.34)	AIMIM	15 (5.03)	35 (11.74)
64A	INC	129 (53.75)	JD(U)	86 (35.83)	43 (17.92)	AIMIM	7 (2.92)	18 (7.5)
65	INC	133 (52.78)	JD(U)	84 (33.33)	49 (19.45)	AIMIM	14 (5.56)	21 (8.33)
65A	JD(U)	175 (64.81)	INC	61 (22.59)	114 (42.22)	AIMIM	11 (4.07)	23 (8.52)
66	INC	278 (51.39)	JD(U)	175 (32.35)	103 (19.04)	AIMIM	61 (11.28)	27 (4.99)
67	JD(U)	224 (50.68)	INC	128 (28.96)	96 (21.72)	AIMIM	18 (4.07)	72 (16.29)
68	INC	246 (58.02)	JD(U)	135 (31.84)	111 (26.18)	LJP	10 (2.36)	33 (7.78)
68A	JD(U)	252 (54.08)	INC	144 (30.9)	108 (23.18)	LJP	28 (6.01)	42 (9.01)
69	JD(U)	373 (68.19)	INC	88 (16.09)	285 (52.1)	LJP	45 (8.23)	41 (7.5)
69A	JD(U)	80 (78.43)	INC	11 (10.78)	69 (67.65)	AIMIM	3 (2.94)	8 (7.84)

Contd....

Socio-Economic Amenities - Rural

Access to Education Facilities

Particulars	Number of Villages (% of Population)				
	Available	Not Available	If Not Available (Distance of Nearest Facility)		
			A	B	C
Govt. Primary School	71 (97)	10 (3)	3 (1)	6 (1)	0 (0)
Private Primary School	27 (42)	54 (58)	0 (0)	0 (0)	0 (0)
Govt. Middle School	39 (72)	42 (28)	7 (3)	29 (20)	4 (3)
Private Middle School	15 (28)	66 (72)	0 (0)	1 (1)	1 (1)
Govt. Secondary School	2 (5)	79 (95)	0 (0)	5 (5)	74 (90)
Private Secondary School	2 (5)	79 (95)	0 (0)	0 (0)	0 (0)
Govt. Senior Secondary School	0 (0)	81 (100)	1 (0)	30 (43)	50 (57)
Private Senior Secondary School	0 (0)	81 (100)	0 (0)	0 (0)	0 (0)
Govt. Arts and Science Degree College	0 (0)	81 (100)	0 (0)	0 (0)	1 (3)
Private Arts and Science Degree College	1 (1)	80 (99)	1 (0)	14 (26)	64 (70)
Govt. Engineering College	0 (0)	81 (100)	0 (0)	0 (0)	0 (0)
Private Engineering College	0 (0)	81 (100)	1 (0)	23 (35)	57 (65)
Govt. Medicine College	0 (0)	81 (100)	1 (0)	20 (33)	60 (66)
Private Medicine College	0 (0)	81 (100)	0 (0)	0 (0)	0 (0)
Govt. Management Institute	0 (0)	81 (100)	0 (0)	0 (0)	0 (0)
Private Management Institute	0 (0)	81 (100)	1 (0)	18 (31)	62 (68)
Govt. Polytechnic	0 (0)	81 (100)	1 (0)	17 (30)	62 (69)
Private Polytechnic	0 (0)	81 (100)	0 (0)	0 (0)	1 (0)
Govt. Vocational Training School/ITI	0 (0)	81 (100)	1 (0)	30 (43)	48 (52)
Private Vocational Training School/ITI	1 (1)	80 (99)	0 (0)	0 (0)	1 (4)
Govt. Non Formal Training Centre	0 (0)	81 (100)	1 (0)	30 (43)	50 (57)
Private Non Formal Training Centre	0 (0)	81 (100)	0 (0)	0 (0)	0 (0)
Govt. School For Disabled	0 (0)	81 (100)	0 (0)	0 (0)	81 (100)
Private School For Disabled	0 (0)	81 (100)	0 (0)	0 (0)	0 (0)
Government Others	1 (1)	80 (99)	0 (0)	0 (0)	0 (0)
Private Others	0 (0)	81 (100)	0 (0)	0 (0)	0 (0)

Note : Distance A : Less than 5 km; B : Between 5-10 km; C : 10+ km.; Source : Data Analysis is based on 2011 Census.

DISCLAIMER

The Terms of Use and Disclaimer of Datanet India Private Limited (hereinafter referred to as "Datanet") for use of this analysis report of **Araria Assembly Constituency (Araria Vidhan Sabha) :-**

1. **Assembly Factbook™** is a Registered Trade Mark owned by Datanet.
2. All the maps are sketched and graphical representation only and have not been drawn to the scale and also not to represent the actual geographical area or boundary of the unit.
3. The data for the aforesaid analysis is based on authentic sources and has been culled from the various publications of Census, CSO and NSSO for district and block level data, various central and state government departments, Central & State Elections Commissions and the concerned Returning Officers' releases, Electoral Rolls, Election results and allied publications, internal assessment, surveys, estimates and analysis. Therefore, certain adjustment of data at micro level may have been done to arrive closer to the macro data.
4. Data have been provided on an "As Is" and "As AVAILABLE" basis
5. The colours shown in the maps or diagram and charts of a particular party, alliance or AC are indicative and do not represent them.
6. This publication which includes maps, sheets, graphs and data would be the property under copyright of Datanet only. The user may use these for its internal study, analysis and research purposes. It's public display, re-selling or any commercial uses by the user are not allowed.
7. Datanet has taken due care and caution in compilation and processing of data and allied information, but does not guarantee the accuracy, adequacy or completeness of any information/analysis and will be not responsible for any errors or omissions or for the results obtained from the use of such information/analysis.
8. All the contents for the publication have been culled from various authentic sources and Datanet reasonably believes such sources to be reliable, but does not make any representations, express or implied as to the accuracy or fitness of use of such information. The information or contents of the information/analysis do not constitute advice and should not be relied upon in making (or refraining from making) any decision. Any reliance placed upon the information provided by Datanet is the sole responsibility and strictly at the user's risk.
9. In no event will Datanet be liable for any damages (including, without limitation, damages for loss of business projects, or loss of profits) arising in contract, tort or otherwise from the use of or inability to use any of its contents, or from any action taken (or refrained from being taken) as a result of using the analysis or any of its contents. Datanet its directors, owners, editors, officials, employees, distributor and agents or any associate will not be liable for any errors in the information contained or any consequences arising from the use of the contents of the provided information/analysis.
10. If any provision of these terms and conditions is held invalid or illegal or unenforceable for any reason by any court of competent jurisdiction, such provision shall be severed and the remainder of provisions of the terms and conditions shall continue in full force and effect as if the Term of Use had been executed with the invalid, illegal or unenforceable provision eliminated.
11. If there are any discrepancies in the information provided, please bring it to attention of Datanet for suitable rectification measures.

**Buy Online This Complete Book At
Datanet India eBooks Store**

www.indiastatpublications.com

or go directly at

[http://www.indiastatpublications.com/
Assembly_factbook/Bihar/Araria/ Araria](http://www.indiastatpublications.com/Assembly_factbook/Bihar/Araria/Araria)

 **india**stat**elections**

ISBN : 978-93-5301-808-5

