



Bihar

# Assembly Factbook™

Narpatganj Assembly Constituency



Key Electoral Data of Narpatganj  
Assembly Constituency (Vidhan Sabha)

Bihar

# Assembly Factbook™

Narpatganj Assembly Constituency



Narpatganj Vidhan Sabha

## **Editor & Director**

Dr. R.K. Thukral

## **Research Editor**

Dr. Shafeeq Rahman

## **Compiled, Researched and Published by Datanet India Pvt. Ltd.**

D-100, 1st Floor,

Okhla Industrial Area, Phase-I,  
New Delhi- 110020.

Ph.: 91-11- 43580781-84

Email : support@indiastatpublications.com

Website : www.indiastatelections.com

## **Online Book Store :**

www.indiastatpublications.com

**Report No. :** AFB/BR-046-0125

**ISBN :** 978-93-5301-850-4

**First Edition :** January, 2018

**Eighth Updated Edition :** January, 2025

**Price :** Rs. 11500/-

US\$ 310

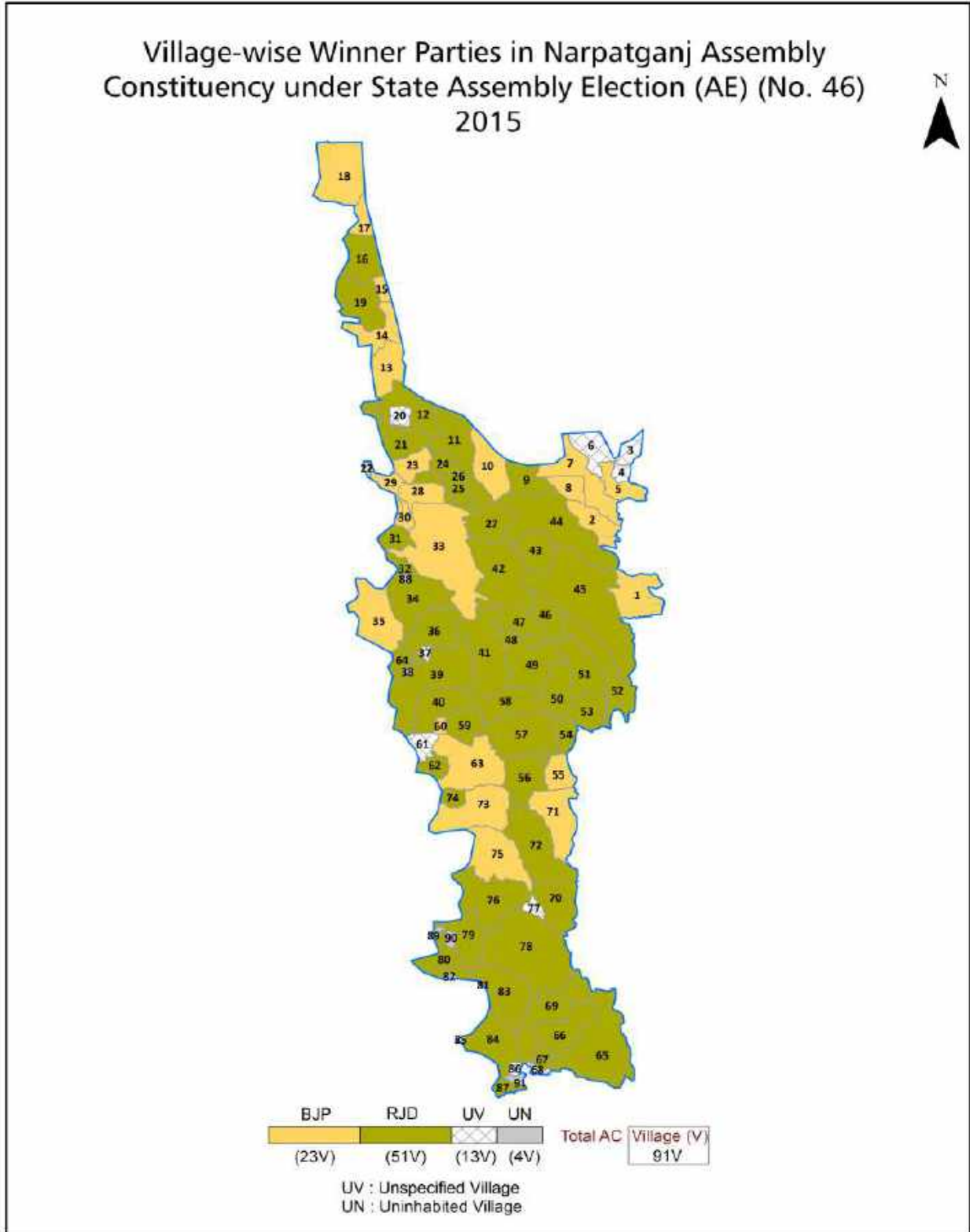
**© Datanet India Pvt. Ltd.**

All rights reserved. No part of this book may be reproduced, stored in a retrieval system or transmitted in any form or by any means, mechanical photocopying, photographing, scanning, recording or otherwise without the prior written permission of the publisher. Please refer to Disclaimer at page no. 245 for the use of this publication.

Printed in India

No.	Particulars	Page No.
	<b>Introduction</b>	
1	Assembly Constituency - (Vidhan Sabha) at a Glance   Features of Assembly as per Delimitation Commission of India (2008)	1-2
	<b>Location and Political Maps</b>	
2	Location Map   Boundaries of Assembly Constituency - (Vidhan Sabha) in District   Boundaries of Assembly Constituency under Parliamentary Constituency - (Lok Sabha)   Village-wise Winner Parties- 2024, 2020, 2019, 2015, 2014, 2010 and 2009	3-11
	<b>Administrative Setup (2011)</b>	
3	District   Sub-district   Towns   Villages   Inhabited Villages   Uninhabited Villages   Village Panchayat   Intermediate Panchayat	12-17
	<b>Demographics (2011)</b>	
4	Population   Households   Rural/Urban Population   Villages by Population Size   Sex Ratio (Total & 0-6 Years)   Religious Population   Social Population   Literacy Rate	18-19
	<b>Electoral Features</b>	
5	Important Dates of Last Elections Held   Electors by Gender   Service Electors   Voters   Voters Turnout   Polling Stations & Average Number of Electors per Polling Station   Electors by Age Group   Present Elected Representatives	20-25
	<b>Historical Summary Election Results</b>	
6	Vote Share of Major Parties   Winning Margin (Number & Percentage)   Polarity of Parties   Summary Result of Assembly Segment of Parliamentary Elections 2024, 2019, 2014, 2009, 2004 and 1999   Summary Result of Assembly Elections 2020, 2015, 2010, 2005 (Oct), 2005 (Feb), 2000, 1995, 1990, 1985, 1980, 1977, 1972, 1969, 1967 and 1962	26-49
	<b>Polling Station Level Election Results</b>	
7	Name and Number of Polling Station 2024, 2020, 2019, 2015, 2014, 2010 and 2009   Polling Station-wise Electors, Voters & Voters Turnout 2024, 2020, 2019, 2015, 2014, 2010 and 2009   Polling Station wise Elections Results 2024, 2020, 2019, 2015, 2014, 2010 and 2009	50-224
	<b>Share of Assembly Constituency</b>	
8	Share of Assembly Constituency - (Vidhan Sabha) in State, District and Parliamentary Constituency - (Lok Sabha)	225
	<b>Socio-Economic Amenities (2011)</b>	
9	Access to Administrative Units   Agricultural, Manufacturing and Industrial Commodities   Demographic Indicators   Education   Health & Manpower   Drinking Water Supply   Sanitation   Entertainment and Recreations Infrastructure   Power   Food Allocation Distribution and Marketing of Agriculture Commodities Infrastructure   Transport and Road Infrastructure   Communication   Banking and Financial Services   Land Use   Irrigation Source	227-241
10	<b>Abbreviation &amp; Sources</b>	242-244
11	<b>Disclaimer</b>	245

Location & Political Map



## Administrative Setup

### List of Village Panchayat & Intermediate Panchayat (Block) Name - 2011

Village Name	Village Panchayat Name	Intermediate Panchayat Name
Ajitnagar	Gokhulapur	Narpatganj
Amrori	Manikpur	Narpatganj
Anchraand Hanuman nagar	Achara	Narpatganj
Baghua Dibiganj	Dargahiganj	Narpatganj
Bardaha	Barhara	Narpatganj
Barhara	Barhara	Narpatganj
Barhepara	Barhepara	Narpatganj
Barhmotar Chakla	Barhmotar Chakla	Bhargama
Bariarpur	Goraraha Bishanpur	Narpatganj
Barmotra Arazi	Achara	Narpatganj
Basmatiya	Basmatiya	Narpatganj
Bela	Bela	Narpatganj
Belsandi	Gokhulapur	Narpatganj
Belwa	Fatehpur	Narpatganj
Bhadwar	Achara	Narpatganj
Bhairoganj	Bela	Narpatganj
Bhanghi	Bhanghi	Narpatganj
Bhargaon	Bhargaon	Bhargama
Bhawanipur	Manikpur	Narpatganj
Bhorhar	Nawabganj	Narpatganj
Bishunpr Bhaiaram	Bishunpr Bhaiaram	Bhargama
Chakorwa	Sonapur	Narpatganj
Chaura	Chaura	Bhargama
Dahrahra	Madhura Pachim	Narpatganj
Damiya	Fatehpur	Narpatganj
Dargahiganj	Dargahiganj	Narpatganj
Dombana	Babuan	Narpatganj
Dumari	Posdaha	Narpatganj
Fatehpur	Fatehpur	Narpatganj

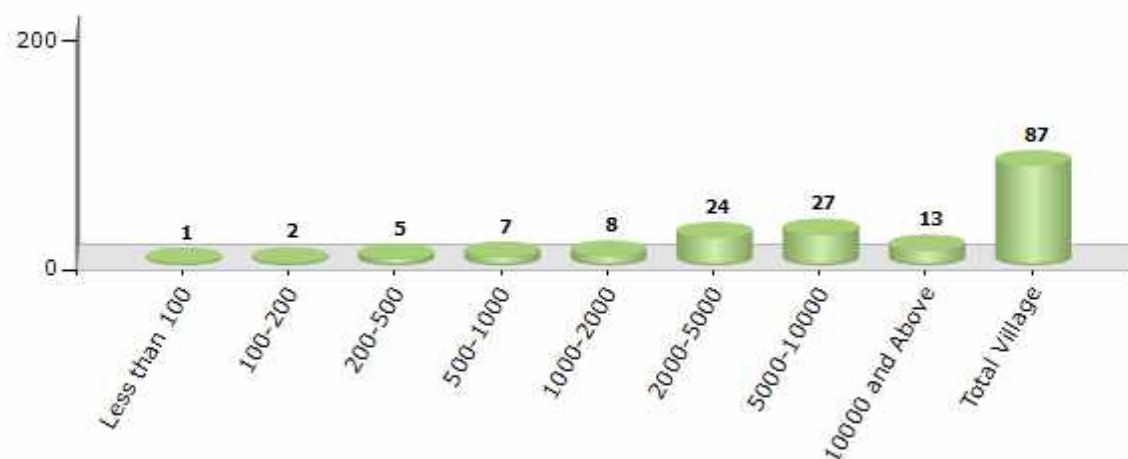
Contd....

## Demographics

### Number of Villages by Population Size - 2011

Less than 100	100-200	200-500	500-1000	1000-2000	2000-5000	5000-10000	10000 and Above	Total Village
1	2	5	7	8	24	27	13	87

Number of Villages by Population Size - 2011

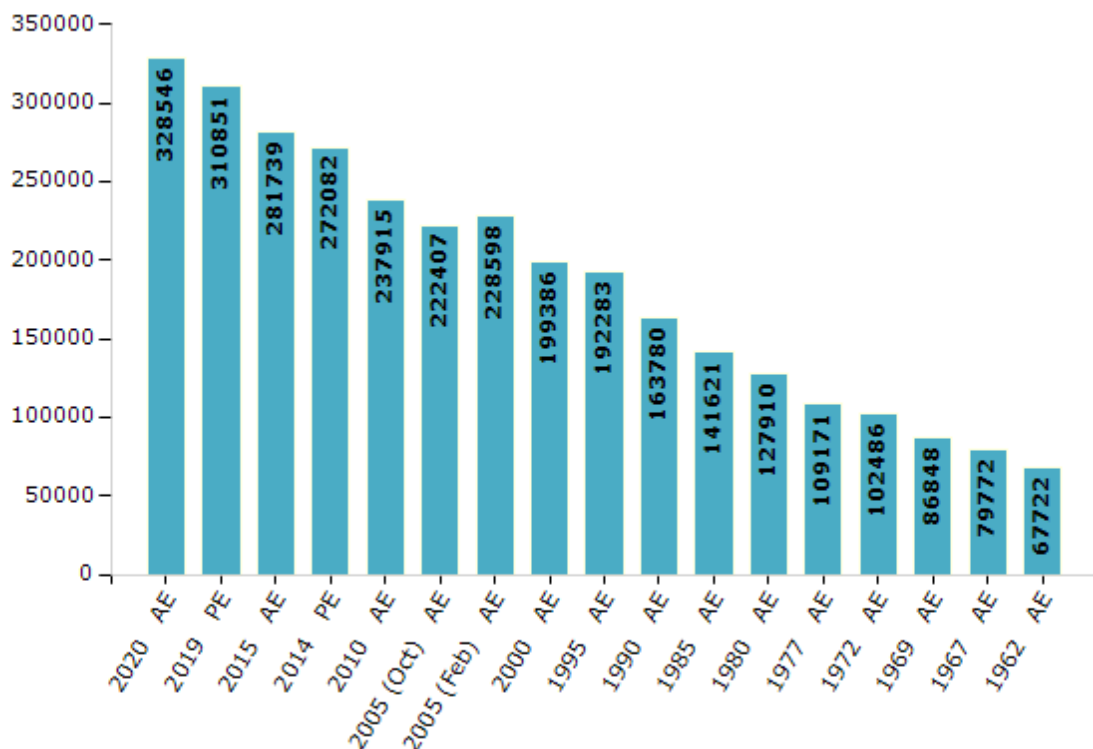


## Electoral Features

### Electors by Male & Female

Year	Male	Female	Others	Total	Year	Male	Female	Others	Total
2020 AE	173101	155429	16	328546	1995 AE	101034	91249	-	192283
2019 PE	164334	146504	13	310851	1990 AE	86370	77410	-	163780
2015 AE	150668	131062	9	281739	1985 AE	76192	65429	-	141621
2014 PE	145271	126801	10	272082	1980 AE	70445	57465	-	127910
2010 AE	126388	111527	0	237915	1977 AE	57067	52104	-	109171
2009 PE	-	-	-	-	1972 AE	53421	49065	-	102486
2005 (Oct) AE	117183	105224	-	222407	1969 AE	44316	42532	-	86848
2005 (Feb) AE	120360	108238	-	228598	1967 AE	-	-	-	79772
2004 PE	-	-	-	-	1962 AE	-	-	-	67722
2000 AE	99984	99402	-	199386	1957 AE	-	-	-	-
1999 PE	-	-	-	-	1952 AE	-	-	-	-

Number of Electors



Note : AE : Assembly Election, PE : Assembly Segment of Parliamentary Election

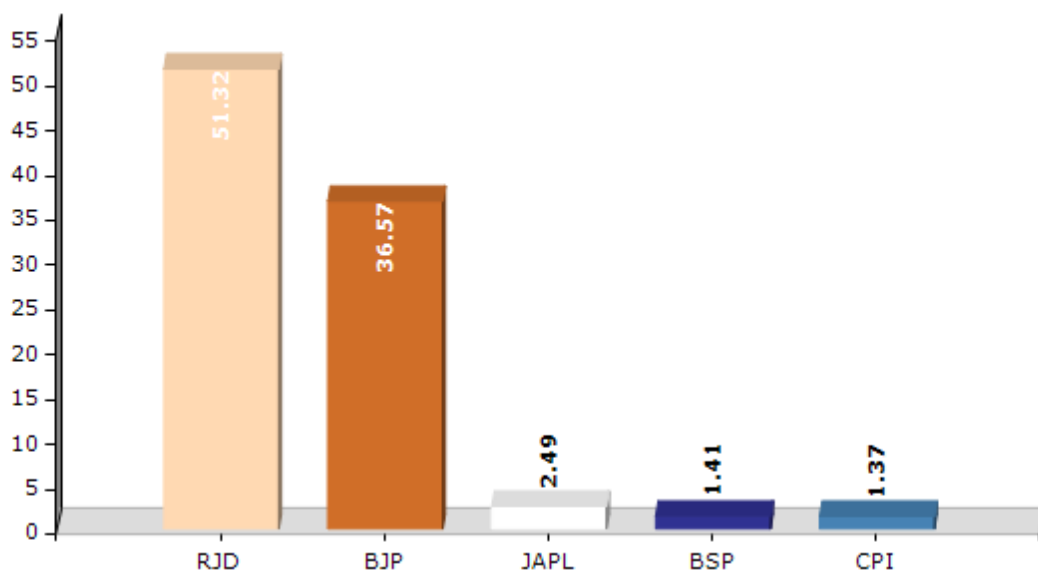


## Historical Summary Election Results

### Summary Result of Assembly Election - 2015

Candidate Name	Party	Votes	Votes %
Anil Kumar Yadav	RJD	90250	51.32
Janardan Yadav	BJP	64299	36.57
Prince Victor	JAPL	4377	2.49
Guru Prasad Yadav	BSP	2483	1.41
Shyam Deo Roy	CPI	2410	1.37
Sadhan Kumar Yadav	IND	1292	0.73
Binod Uranw	JMM	1285	0.73
Papu Kumar Singh	IND	1147	0.65
Ashok Kumar Bhagat	SHS	996	0.57
Indra Nand Yadav	SP	967	0.55
Mohammad Rahmat Ali	BMUP	864	0.49
Navi Hassan	RVNP	836	0.48
	NOTA	4637	2.64

Votes Percentage of Top Parties - 2015



## Polling Station Level Election Results

### Number and Name of Polling Stations (PS) (2020)

Number of Polling Stations	Name of Polling Stations	Number of Polling Stations	Name of Polling Stations
1	Utkramit Madhya Vidyalay,Bela (Purab Bhag)	13A	Madhya Vidyalay Maheshapatti (Paschim Bhag)
1A	Utkramit Madhya Vidyalay,Bela (Purab Bhag)	14	Utkramit Madhya Vidyalay Dumarabanna Purab Bhag
2	Utkramit Madhya Vidyalay,Bela (Paschim Bhag)	15	Utkramit Madhy Vidyalay Dumarabanna Pashchim Bhag
3	Utkramit Madhya Vidyalay Bela Rifyuji Tola Uttar Bhag	16	Prathmik Vidyalay Babuan Pasawan Tola (Uttar Bhag )
3A	Utkramit Madhya Vidyalay Bela Rifyuji Tola Uttar Bhag	16A	Prathmik Vidyalay Babuan Pasawan Tola (Uttar Bhag )
4	Utkramit Madhy Vidyalay Bela Rifyuji Dakshin Bhag	17	Prathmik Vidyalay Babuan Paswan Tola Dakshin Bhag
5	Prathmik Vidyalay,Bhairoganj Uttar Bhag	17A	Prathmik Vidyalay Babuan Paswan Tola Dakshin Bhag
5A	Prathmik Vidyalay,Bhairoganj Uttar Bhag	18	Madhy Vidyalay Babuan B M C Pashchim Bhag
6	Madhya Vidyalay Basmatiya (Uttar Bhag )	18A	Madhy Vidyalay Babuan B M C Pashchim Bhag
7	Madhya Vidyalay Basmatiya (Dakshin Bhag )	19	Madhy Vidyalay Babuan B M C Purab Bhag
7A	Madhya Vidyalay Basmatiya (Dakshin Bhag )	20	Utkramit Madhya Vidyalay Ghurna Hindi (Purab Bhag)
8	Panchayat Bhawan,Basmatiya	20A	Utkramit Madhya Vidyalay Ghurna Hindi (Purab Bhag)
9	Anganwari Bhawan Basmatiya Panchayat Bhawan Ke Nikat	21	Utkramit Madhy Vidyalay Ghurana Hindi Madhy Bhag
9A	Anganwari Bhawan Basmatiya Panchayat Bhawan Ke Nikat	21A	Utkramit Madhy Vidyalay Ghurana Hindi Madhy Bhag
10	Prathmik Vidyalay Basmatiya,B.M.C.(Purab Bhag )	22	Utkramit Madhy Vidyalay Ghurna Hindi Madhya Bhag
10A	Prathmik Vidyalay Basmatiya,B.M.C.(Purab Bhag )	22A	Utkramit Madhy Vidyalay Ghurna Hindi Madhya Bhag
11	Prathmik Vidyalay Basmatiya,B.M.C. (Uttar Bhag )	23	Utkramit Madhya Vidhyaly Pathraha Urdu (Uttar Bhag)
11A	Prathmik Vidyalay Basmatiya,B.M.C. (Uttar Bhag )	23A	Utkramit Madhya Vidhyaly Pathraha Urdu (Uttar Bhag)
12	Madhya Vidyalay Maheshapatti (Purab Bhag )	24	Utkramit Madhy Vidyalay Pathrah Urdu Dakshin Bhag
12A	Madhya Vidyalay Maheshapatti (Purab Bhag )	24A	Utkramit Madhy Vidyalay Pathrah Urdu Dakshin Bhag
13	Madhya Vidyalay Maheshapatti (Paschim Bhag)	25	Madhya Vidyalay,Bhawanipur Dakshin Bhag

Contd....

## Polling Station Level Election Results

### Polling Station-wise Votes Secured by Overall Top Five Parties in Narpatganj Assembly in Assembly Election (AE) under Araria Parliamentary Constituency in Bihar (2020)

Number of Polling Station	Winner - Jai Prakash Yadav (BJP)	Runner-up - Anil Kumar Yadav (RJD)	3rd - HADIS (AIMIM)	4th - Akhilesh Kumar (IND)	5th - Prince Victor (JAPL)	NOTA	Other	Total Votes Secured
22	256	20	71	7	3	1	25	383
22A	130	41	210	13	1	0	38	433
23	10	63	520	7	0	1	40	641
23A	35	91	400	3	3	7	46	585
24	22	242	161	16	6	5	50	502
24A	9	167	228	8	1	2	82	497
25	140	123	19	8	0	1	42	333
25A	16	367	33	14	0	5	35	470
26	21	263	135	12	2	3	102	538
27	350	39	28	6	2	1	57	483
28	1	205	15	3	0	2	22	248
28A	3	447	22	11	1	0	30	514
29	341	79	8	8	1	0	30	467
29A	195	199	6	11	0	1	28	440
30	193	129	10	11	3	1	39	386
30A	195	331	5	18	9	3	64	625
31	372	195	34	13	2	1	67	684
32	357	38	9	7	1	3	41	456
33	358	74	8	22	2	1	91	556
34	233	86	9	11	1	7	58	405
34A	109	156	4	37	7	4	36	353
35	270	98	6	1	0	5	30	410
35A	204	151	3	7	2	2	35	404
36	459	30	7	10	0	3	45	554
37	178	195	3	10	5	1	32	424
37A	118	154	6	18	6	0	43	345
38	289	90	2	12	5	1	29	428
38A	436	53	12	14	0	0	43	558
39	168	248	9	26	5	6	62	524
40	229	214	8	22	2	1	44	520
41	182	266	8	17	2	3	61	539
42	239	125	5	12	3	3	47	434
43	451	12	2	3	3	1	40	512
43A	287	114	11	16	0	1	26	455
44	292	128	7	4	4	4	24	463

Contd....

## Polling Station Level Election Results

### Winner, Runner-up and 3rd Party Position & Winning Margin According to Polling Stations in Narpatganj Assembly in Assembly Election (AE) under Araria Parliamentary Constituency in Bihar (2020)

Polling Station Number	Winner Party	Winner Votes (%)	Runner-up Party	Runner-up Votes (%)	Winning Margin Votes (%)	Third Party	Third Party Votes (%)	Other Votes (%)
44A	BJP	332 (53.29)	RJD	185 (29.7)	147 (23.59)	IND (ALK)	20 (3.21)	86 (13.8)
45	RJD	223 (53.73)	BJP	147 (35.42)	76 (18.31)	IND (ALK)	11 (2.65)	34 (8.19)
45A	BJP	404 (82.96)	RJD	41 (8.42)	363 (74.54)	IND (ALK)	8 (1.64)	34 (6.98)
46	BJP	375 (85.42)	RJD	47 (10.71)	328 (74.71)	BMUP	5 (1.14)	12 (2.73)
46A	BJP	354 (67.3)	RJD	127 (24.14)	227 (43.16)	IND (PK)	11 (2.09)	34 (6.46)
47	BJP	226 (52.68)	RJD	163 (38)	63 (14.68)	JDR	9 (2.1)	31 (7.23)
47A	BJP	231 (69.37)	RJD	54 (16.22)	177 (53.15)	IND (PK)	11 (3.3)	37 (11.11)
48	BJP	472 (72.62)	RJD	83 (12.77)	389 (59.85)	IND (ALK)	34 (5.23)	61 (9.38)
49	BJP	428 (58.39)	RJD	184 (25.1)	244 (33.29)	IND (PK)	21 (2.86)	100 (13.64)
50	BJP	207 (51.36)	RJD	124 (30.77)	83 (20.59)	IND (ALK)	24 (5.96)	48 (11.91)
50A	BJP	433 (75.96)	RJD	87 (15.26)	346 (60.7)	IND (ALK)	17 (2.98)	33 (5.79)
51	BJP	185 (46.95)	RJD	161 (40.86)	24 (6.09)	JDR	11 (2.79)	37 (9.39)
51A	RJD	219 (59.03)	BJP	98 (26.42)	121 (32.61)	JDR	17 (4.58)	37 (9.97)
52	RJD	159 (44.66)	BJP	151 (42.42)	8 (2.24)	JDR	16 (4.49)	30 (8.43)
52A	BJP	385 (86.91)	RJD	25 (5.64)	360 (81.27)	AIMIM	7 (1.58)	26 (5.87)
53	BJP	324 (87.57)	RJD	12 (3.24)	312 (84.33)	IND (PK)	6 (1.62)	28 (7.57)
53A	BJP	518 (90.72)	RJD	16 (2.8)	502 (87.92)	IND (PK)	7 (1.23)	30 (5.25)
54	RJD	279 (65.34)	BJP	72 (16.86)	207 (48.48)	AIMIM	15 (3.51)	61 (14.29)
54A	RJD	368 (70.63)	AIMIM	38 (7.29)	330 (63.34)	IND (ALK)	22 (4.22)	93 (17.85)
55	RJD	273 (58.46)	BJP	118 (25.27)	155 (33.19)	IND (ALK)	17 (3.64)	59 (12.63)
56	BJP	476 (77.91)	RJD	74 (12.11)	402 (65.8)	AIMIM	11 (1.8)	50 (8.18)
57	BJP	270 (43.97)	RJD	243 (39.58)	27 (4.39)	AIMIM	31 (5.05)	70 (11.4)
58	RJD	254 (47.12)	BJP	210 (38.96)	44 (8.16)	IND (ALK)	19 (3.53)	56 (10.39)
58A	BJP	256 (67.02)	RJD	77 (20.16)	179 (46.86)	JNSHKVPD	13 (3.4)	36 (9.42)
59	BJP	599 (77.99)	RJD	91 (11.85)	508 (66.14)	IND (PK)	14 (1.82)	64 (8.33)
60	BJP	192 (47.64)	RJD	130 (32.26)	62 (15.38)	IND (ALK)	33 (8.19)	48 (11.91)
60A	RJD	221 (59.73)	BJP	61 (16.49)	160 (43.24)	IND (ALK)	46 (12.43)	42 (11.35)
61	BJP	304 (60.32)	RJD	135 (26.79)	169 (33.53)	IND (ALK)	15 (2.98)	50 (9.92)
62	BJP	384 (62.04)	RJD	151 (24.39)	233 (37.65)	JAPL	18 (2.91)	66 (10.66)
63	BJP	230 (43.81)	RJD	210 (40)	20 (3.81)	IND (ALK)	23 (4.38)	62 (11.81)
63A	RJD	130 (42.9)	BJP	125 (41.25)	5 (1.65)	AIMIM	10 (3.3)	38 (12.54)
64	RJD	276 (44.88)	IND (ALK)	177 (28.78)	99 (16.1)	BJP	72 (11.71)	90 (14.63)
65	IND (ALK)	254 (52.16)	RJD	140 (28.75)	114 (23.41)	BJP	42 (8.62)	51 (10.47)
66	BJP	283 (51.18)	RJD	192 (34.72)	91 (16.46)	IND (ALK)	18 (3.25)	60 (10.85)
67	RJD	336 (66.4)	BJP	124 (24.51)	212 (41.89)	JDR	13 (2.57)	33 (6.52)

Contd....

**Socio-Economic Amenities - Rural**

**Access to Education Facilities**

Particulars	Number of Villages (% of Population)				
	Available	Not Available	If Not Available (Distance of Nearest Facility)		
			A	B	C
Govt. Primary School	78 (99)	9 (1)	7 (1)	2 (0)	0 (0)
Private Primary School	13 (27)	74 (73)	0 (0)	0 (0)	0 (0)
Govt. Middle School	57 (87)	30 (13)	21 (10)	9 (3)	0 (0)
Private Middle School	4 (10)	83 (90)	0 (0)	0 (0)	0 (0)
Govt. Secondary School	5 (12)	82 (88)	0 (0)	1 (1)	78 (83)
Private Secondary School	1 (5)	86 (95)	0 (0)	0 (0)	3 (4)
Govt. Senior Secondary School	1 (2)	86 (98)	0 (0)	23 (34)	29 (29)
Private Senior Secondary School	1 (5)	86 (95)	0 (0)	10 (12)	23 (18)
Govt. Arts and Science Degree College	0 (0)	87 (100)	0 (0)	0 (0)	65 (76)
Private Arts and Science Degree College	0 (0)	87 (100)	0 (0)	0 (0)	22 (24)
Govt. Engineering College	0 (0)	87 (100)	0 (0)	0 (0)	0 (0)
Private Engineering College	0 (0)	87 (100)	0 (0)	0 (0)	87 (100)
Govt. Medicine College	0 (0)	87 (100)	0 (0)	4 (5)	24 (28)
Private Medicine College	0 (0)	87 (100)	0 (0)	0 (0)	59 (67)
Govt. Management Institute	0 (0)	87 (100)	0 (0)	0 (0)	66 (78)
Private Management Institute	0 (0)	87 (100)	0 (0)	4 (5)	17 (17)
Govt. Polytechnic	0 (0)	87 (100)	1 (0)	4 (5)	82 (95)
Private Polytechnic	0 (0)	87 (100)	0 (0)	0 (0)	0 (0)
Govt. Vocational Training School/ITI	0 (0)	87 (100)	0 (0)	2 (6)	84 (94)
Private Vocational Training School/ITI	0 (0)	87 (100)	0 (0)	0 (0)	1 (0)
Govt. Non Formal Training Centre	0 (0)	87 (100)	0 (0)	1 (3)	84 (93)
Private Non Formal Training Centre	0 (0)	87 (100)	0 (0)	0 (0)	2 (4)
Govt. School For Disabled	0 (0)	87 (100)	0 (0)	0 (0)	86 (100)
Private School For Disabled	0 (0)	87 (100)	0 (0)	0 (0)	1 (0)
Government Others	0 (0)	87 (100)	0 (0)	0 (0)	1 (1)
Private Others	0 (0)	87 (100)	0 (0)	0 (0)	0 (0)

Note : Distance A : Less than 5 km; B : Between 5-10 km; C : 10+ km.; Source : Data Analysis is based on 2011 Census.

## DISCLAIMER

The Terms of Use and Disclaimer of Datanet India Private Limited (hereinafter referred to as "Datanet") for use of this analysis report of **Narpatganj Assembly Constituency (Narpatganj Vidhan Sabha)** :-

1. **Assembly Factbook™** is a Registered Trade Mark owned by Datanet.
2. All the maps are sketched and graphical representation only and have not been drawn to the scale and also not to represent the actual geographical area or boundary of the unit.
3. The data for the aforesaid analysis is based on authentic sources and has been culled from the various publications of Census, CSO and NSSO for district and block level data, various central and state government departments, Central & State Elections Commissions and the concerned Returning Officers' releases, Electoral Rolls, Election results and allied publications, internal assessment, surveys, estimates and analysis. Therefore, certain adjustment of data at micro level may have been done to arrive closer to the macro data.
4. Data have been provided on an "As Is" and "As AVAILABLE" basis
5. The colours shown in the maps or diagram and charts of a particular party, alliance or AC are indicative and do not represent them.
6. This publication which includes maps, sheets, graphs and data would be the property under copyright of Datanet only. The user may use these for its internal study, analysis and research purposes. It's public display, re-selling or any commercial uses by the user are not allowed.
7. Datanet has taken due care and caution in compilation and processing of data and allied information, but does not guarantee the accuracy, adequacy or completeness of any information/analysis and will be not responsible for any errors or omissions or for the results obtained from the use of such information/analysis.
8. All the contents for the publication have been culled from various authentic sources and Datanet reasonably believes such sources to be reliable, but does not make any representations, express or implied as to the accuracy or fitness of use of such information. The information or contents of the information/analysis do not constitute advice and should not be relied upon in making (or refraining from making) any decision. Any reliance placed upon the information provided by Datanet is the sole responsibility and strictly at the user's risk.
9. In no event will Datanet be liable for any damages (including, without limitation, damages for loss of business projects, or loss of profits) arising in contract, tort or otherwise from the use of or inability to use any of its contents, or from any action taken (or refrained from being taken) as a result of using the analysis or any of its contents. Datanet its directors, owners, editors, officials, employees, distributor and agents or any associate will not be liable for any errors in the information contained or any consequences arising from the use of the contents of the provided information/analysis.
10. If any provision of these terms and conditions is held invalid or illegal or unenforceable for any reason by any court of competent jurisdiction, such provision shall be severed and the remainder of provisions of the terms and conditions shall continue in full force and effect as if the Term of Use had been executed with the invalid, illegal or unenforceable provision eliminated.
11. If there are any discrepancies in the information provided, please bring it to attention of Datanet for suitable rectification measures.

**Buy Online This Complete Book At  
Datanet India eBooks Store**

[www.indiastatpublications.com](http://www.indiastatpublications.com)

or go directly at

[http://www.indiastatpublications.com/  
Assembly\\_factbook/Bihar/Araria/ Narpatganj](http://www.indiastatpublications.com/Assembly_factbook/Bihar/Araria/Narpatganj)

 **india**stat**elections**

ISBN : 978-93-5301-850-4

