



Bihar

Assembly Factbook™

Imamganj Assembly Constituency

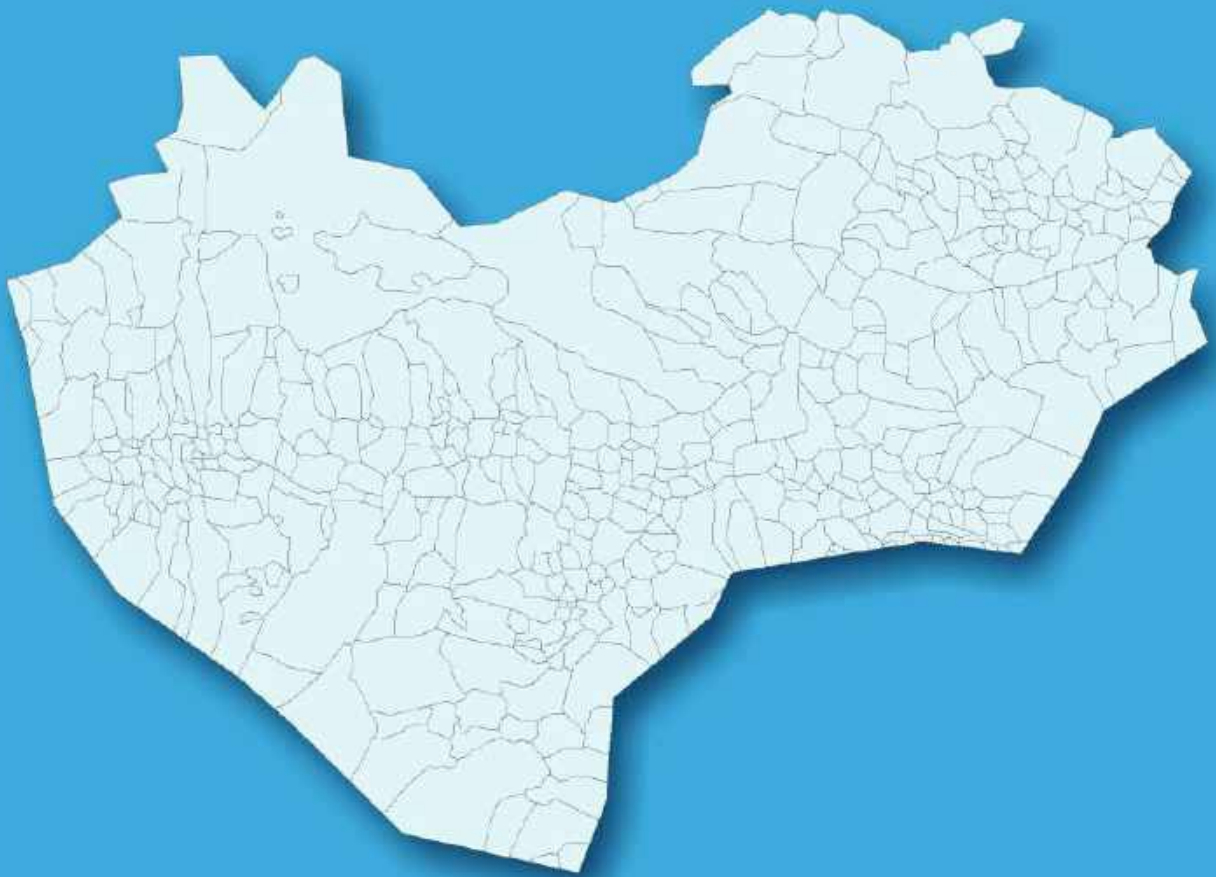


Key Electoral Data of Imamganj
Assembly Constituency (Vidhan Sabha)

Bihar

Assembly Factbook™

Imamganj Assembly Constituency



Imamganj Vidhan Sabha

Editor & Director

Dr. R.K. Thukral

Research Editor

Dr. Shafeeq Rahman

Compiled, Researched and Published by Datanet India Pvt. Ltd.

D-100, 1st Floor,

Okhla Industrial Area, Phase-I,
New Delhi- 110020.

Ph.: 91-11- 43580781-84

Email : support@indiastatpublications.com

Website : www.indiastatelections.com

Online Book Store :

www.indiastatpublications.com

Report No. : AFB/BR-227-0125

ISBN : 978-93-5301-842-9

First Edition : January, 2018

Eighth Updated Edition : January, 2025

Price : Rs. 11500/-

US\$ 310

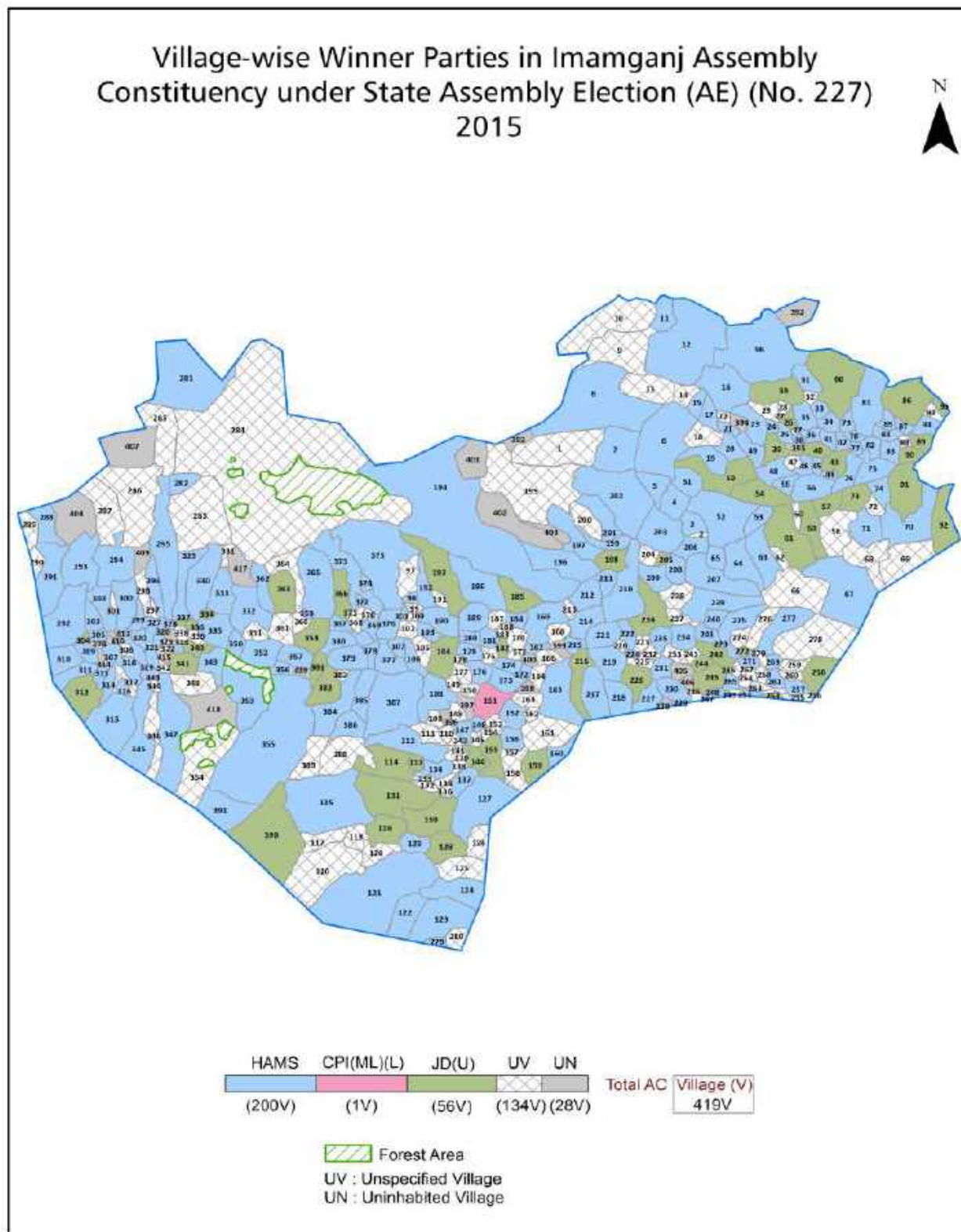
© Datanet India Pvt. Ltd.

All rights reserved. No part of this book may be reproduced, stored in a retrieval system or transmitted in any form or by any means, mechanical photocopying, photographing, scanning, recording or otherwise without the prior written permission of the publisher. Please refer to Disclaimer at page no. 284 for the use of this publication.

Printed in India

No.	Particulars	Page No.
	Introduction	
1	Assembly Constituency - (Vidhan Sabha) at a Glance Features of Assembly as per Delimitation Commission of India (2008)	1-2
	Location and Political Maps	
2	Location Map Boundaries of Assembly Constituency - (Vidhan Sabha in District Boundaries of Assembly Constituency under Parliamentary Constituency - (Lok Sabha) Village-wise Winner Parties- 2024, 2020, 2019, 2015, 2014, 2010 and 2009	3-11
	Administrative Setup (2011)	
3	District Sub-district Towns Villages Inhabited Villages Uninhabited Villages Village Panchayat Intermediate Panchayat	12-31
	Demographics (2011)	
4	Population Households Rural/Urban Population Villages by Population Size Sex Ratio (Total & 0-6 Years) Religious Population Social Population Literacy Rate	32-33
	Electoral Features	
5	Important Dates of Last Elections Held Electors by Gender Service Electors Voters Voters Turnout Polling Stations & Average Number of Electors per Polling Station Electors by Age Group Present Elected Representatives	34-39
	Historical Summary Election Results	
6	Vote Share of Major Parties Winning Margin (Number & Percentage Polarity of Parties Summary Result of Assembly Segment of Parliamentary Elections 2024, 2019, 2014, 2009, 2004 and 1999 Summary Result of Assembly Elections 2024, 2020, 2015, 2010, 2005 (Oct), 2005 (Feb), 2000, 1995, 1990, 1985, 1980, 1977, 1972, 1969, 1967, 1962 and 1957	40-64
	Polling Station Level Election Results	
7	Name and Number of Polling Station 2024, 2020, 2019, 2015, 2014, 2010 and 2009 Polling Station-wise Electors, Voters & Voters Turnout 2024, 2020, 2019, 2015, 2014, 2010 and 2009 Polling Station wise Elections Results 2024, 2020, 2019, 2015, 2014, 2010 and 2009	65-263
	Share of Assembly Constituency	
8	Share of Assembly Constituency - (Vidhan Sabha) in State, District and Parliamentary Constituency - (Lok Sabha)	264
	Socio-Economic Amenities (2011)	
9	Access to Administrative Units Agricultural, Manufacturing and Industrial Commodities Demographic Indicators Education Health & Manpower Drinking Water Supply Sanitation Entertainment and Recreations Infrastructure Power Food Allocation Distribution and Marketing of Agriculture Commodities Infrastructure Transport and Road Infrastructure Communication Banking and Financial Services Land Use Irrigation Source	266-280
10	Abbreviation & Sources	281-283
11	Disclaimer	284

Location & Political Map



Administrative Setup

List of Village Panchayat & Intermediate Panchayat (Block) Name - 2011

Village Name	Village Panchayat Name	Intermediate Panchayat Name
Adar	Manjhauli	Dumaria
Adman	Dubhal	Imamganj
Akauni	Sidhpur	Imamganj
Alinagar	Sidhpur	Imamganj
Amauna	Naudiha	Imamganj
Amauni	Kujeshar	Imamganj
Amma Bar	Kachar	Dumaria
Ammakhar	Baital	Banke Bazar
Anarbansalea	Chhakarbandha	Dumaria
Anjan	Parasawankhurd	Banke Bazar
Asurain	Lutua	Banke Bazar
Azamgarh	Saifganj	Banke Bazar
Babhandih	Babhandih	Imamganj
Bagahi	Kujeshar	Imamganj
Bage Bar	Jhikatiya Kalan	Imamganj
Bagea	Sidhpur	Imamganj
Baghauta	Lawabar	Imamganj
Baghpur	Narayanpur	Dumaria
Baha	Lawabar	Imamganj
Bahadurpur	Kolhuwar	Dumaria
Bahak	Barheta	Banke Bazar
Bahera	Chuabar	Imamganj
Bahera	Chuabar	Imamganj
Bahuara	Naudiha	Imamganj
Baida Saida	Roshanganj	Banke Bazar
Bairi Banbas	Saifganj	Banke Bazar
Baital	Baital	Banke Bazar
Bakri	Bhokaha	Dumaria
Balaset	Roshanganj	Banke Bazar

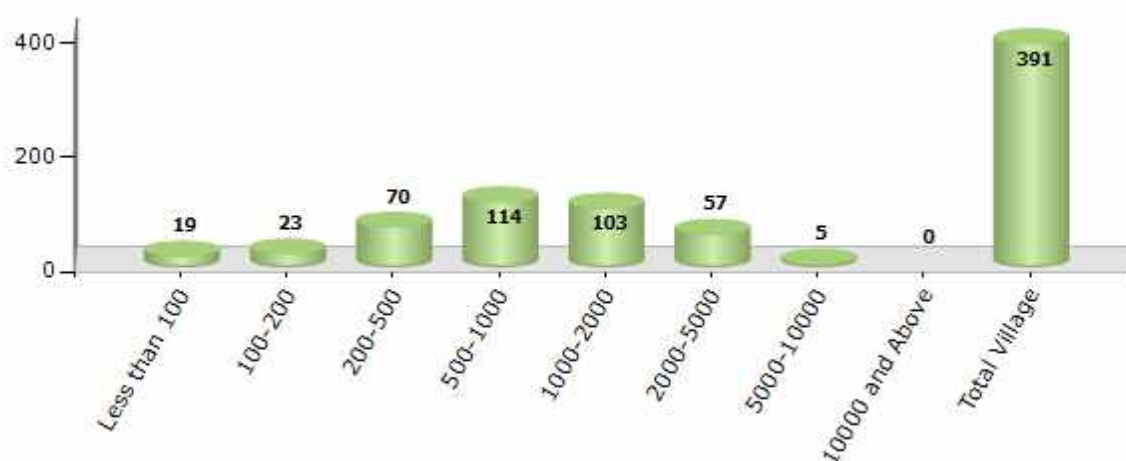
Contd....

Demographics

Number of Villages by Population Size - 2011

Less than 100	100-200	200-500	500-1000	1000-2000	2000-5000	5000-10000	10000 and Above	Total Village
19	23	70	114	103	57	5	0	391

Number of Villages by Population Size - 2011

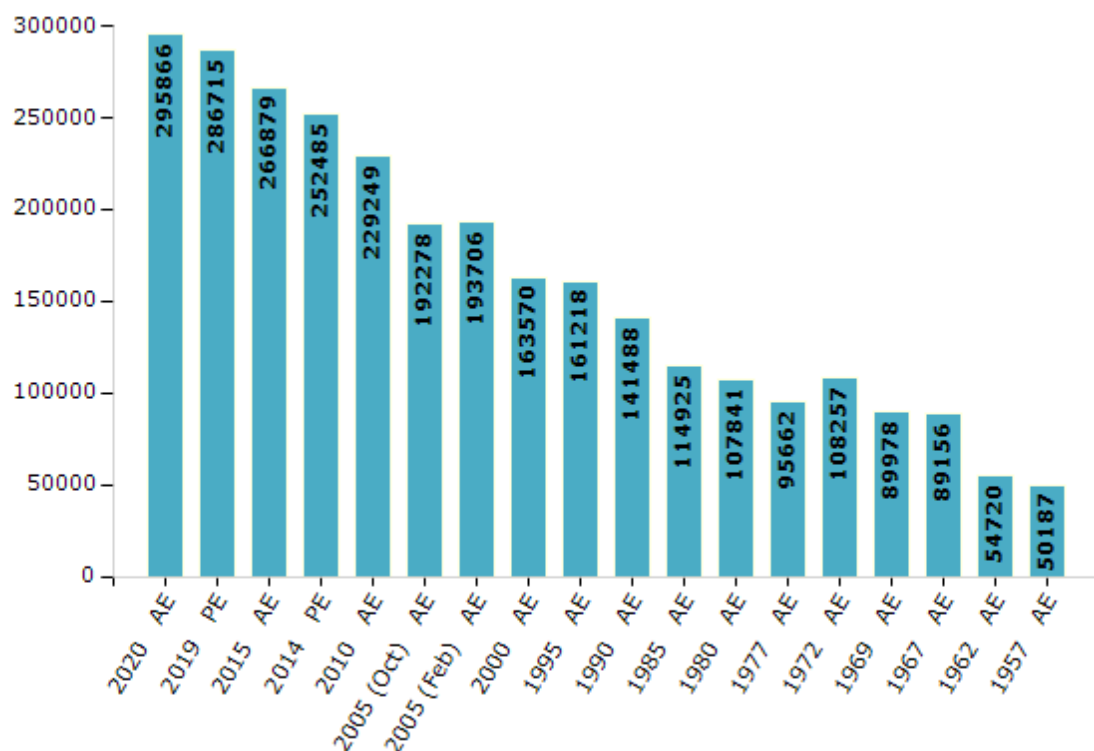


Electoral Features

Electors by Male & Female

Year	Male	Female	Others	Total	Year	Male	Female	Others	Total
2020 AE	153697	142159	10	295866	1995 AE	83915	77303	-	161218
2019 PE	148926	137778	11	286715	1990 AE	75665	65823	-	141488
2015 AE	140572	126298	9	266879	1985 AE	60113	54812	-	114925
2014 PE	133919	118557	9	252485	1980 AE	56115	51726	-	107841
2010 AE	122837	106412	0	229249	1977 AE	51282	44380	-	95662
2009 PE	-	-	-	-	1972 AE	57374	50883	-	108257
2005 (Oct) AE	101858	90420	-	192278	1969 AE	48830	41148	-	89978
2005 (Feb) AE	102675	91031	-	193706	1967 AE	-	-	-	89156
2004 PE	-	-	-	-	1962 AE	-	-	-	54720
2000 AE	86264	77306	-	163570	1957 AE	-	-	-	50187
1999 PE	-	-	-	-	1952 AE	-	-	-	-

Number of Electors



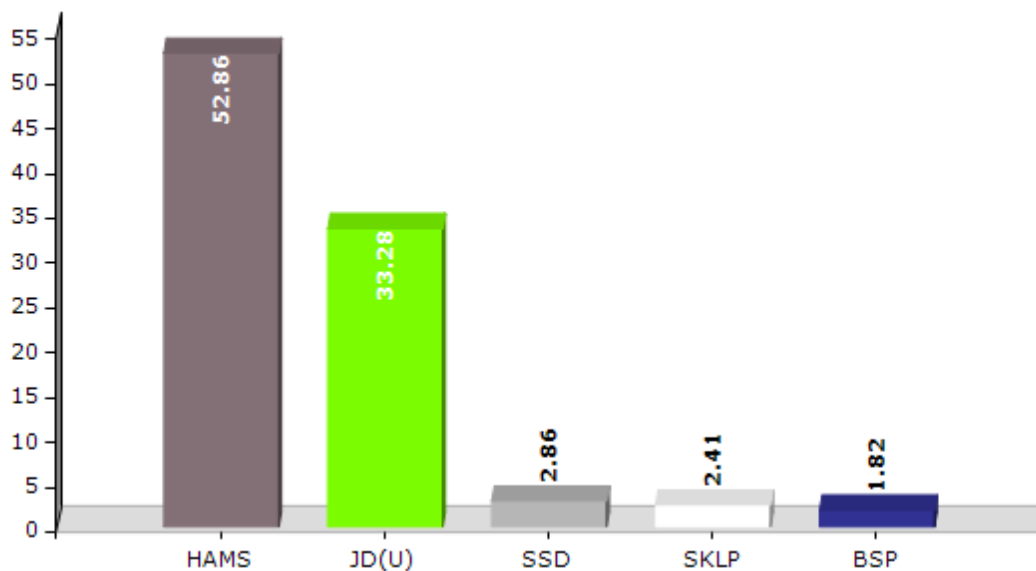
Note : AE : Assembly Election, PE : Assembly Segment of Parliamentary Election

Historical Summary Election Results

Summary Result of Assembly Election - 2015

Candidate Name	Party	Votes	Votes %
Jitan Ram Manjhi	HAMS	79389	52.86
Uday Narain Choudhary	JD(U)	49981	33.28
Raghuni Ram Shastri	SSD	4297	2.86
Lalan Kumar	SKLP	3624	2.41
Mathura Paswan	BSP	2732	1.82
Ram Khelawan Chaudhry	AAHPty	2491	1.66
Shankar Paswan	CPI(ML)(L)	2109	1.4
	NOTA	5552	3.7

Votes Percentage of Top Parties - 2015



Polling Station Level Election Results

Number and Name of Polling Stations (PS) (2020)

Number of Polling Stations	Name of Polling Stations	Number of Polling Stations	Name of Polling Stations
1	Madhya Vidyalay, Hurmeth	17	Prathamik Vidyalay, Nagahari
2	Madhya Vidyalay, Siladiliya	18	Madhya Vidyalay, Kasiyadih (Daya Bhag)
3	Madhya Vidyalay, Ambabar	18A	Madhya Vidyalay, Kasiyadih (Daya Bhag)
4	Madhya Vidyalay, Kharadag	19	Madhya Vidyalay ,Fulavariya (Daya Bhag)
4A	Madhya Vidyalay, Kharadag	19A	Madhya Vidyalay ,Fulavariya (Daya Bhag)
5	Madhya Vidyalay, Kachar (Purav Bhag)	20	Madhya Vidyalay , Chandariya
5A	Madhya Vidyalay, Kachar (Purav Bhag)	21	Urdu Prathamik Vidyalay, Bikuakala
6	Madhya Vidyalay, Kachar (Paschim Bhag)	21A	Urdu Prathamik Vidyalay, Bikuakala
6A	Madhya Vidyalay, Kachar (Paschim Bhag)	22	Madhya Vidyalay, Maigara
7	Madhya Vidyalay, Gotibandh	23	Uchch School , Maigra
8	Primary School, Devri	24	Madhya Vidyalay, Sidhpur Avasthit Shivanagar
9	Primary School, Anbaran Salaiya	24A	Madhya Vidyalay, Sidhpur Avasthit Shivanagar
10	Samudayik Vikas Bhawan, Chhakarbadha (Purvi Bhag)	25	Prathamik Vidyalay, Karahani
11	Madhya Vidyalay, Pichhuliyon	26	Madhya Vidyalay, Kolhubar
12	Urdu Madhya Vidyalay, Chhakarbandha (Pashchimi Bhag)	26A	Madhya Vidyalay, Kolhubar
13	Primary School, Tarchuan	27	Urdu Prathamik Vidyalay, Kolhubar
14	Madhya Vidyalay,Baraha (Daya Bhag)	28	Madhya Vidyalay, Salaiya
14A	Madhya Vidyalay,Baraha (Daya Bhag)	29	Prathamik Vidyalay, Mataha (Purvi Bhag)
15	Samudayik Vikash Bhavan, Sevara (Purvi Bhag)	29A	Prathamik Vidyalay, Mataha (Purvi Bhag)
15A	Samudayik Vikash Bhavan, Sevara (Purvi Bhag)	30	Prathamik Vidyalay, Mataha (Pashichmi Bhag)
16	Samudayik Vikash Bhavan, Sevara (Pashchimi Bhag)	30A	Prathamik Vidyalay, Mataha (Pashichmi Bhag)

Contd....

Polling Station Level Election Results

Polling Station-wise Votes Secured by Overall Top Five Parties in Imamganj Assembly in Assembly Election (AE) under Aurangabad Parliamentary Constituency in Bihar (2020)

Number of Polling Station	Winner - Jitan Ram Manjhi (HAMS)	Runner-up - Uday Narain Choudhary (RJD)	3rd - Kumari Shobha Sinha (LJP)	4th - Fakirchand Das (JAPL)	5th - Jitendra Kumar Paswan (RLSP)	NOTA	Other	Total Votes Secured
26A	99	205	34	8	2	12	12	372
27	86	243	8	6	2	13	7	365
28	118	95	241	16	12	7	28	517
29	122	176	14	2	1	8	6	329
29A	197	121	12	2	2	8	9	351
30	157	112	6	9	3	19	24	330
30A	227	67	3	15	0	38	31	381
31	261	116	15	5	3	15	11	426
32	251	81	53	19	9	9	22	444
33	59	258	141	16	12	18	24	528
34	267	262	8	65	7	3	13	625
35	80	238	28	1	1	7	15	370
36	292	90	77	7	2	2	9	479
37	122	167	52	11	5	10	27	394
38	86	145	18	3	4	13	9	278
38A	55	220	23	3	1	16	18	336
39	35	121	3	1	1	10	10	181
40	63	231	3	8	0	7	3	315
41	144	158	5	4	2	7	11	331
41A	77	191	17	0	4	3	9	301
42	339	19	17	7	1	14	12	409
43	139	156	9	73	5	5	13	400
44	157	177	19	3	0	7	8	371
45	132	31	69	3	2	1	7	245
46	155	142	4	0	1	7	7	316
46A	150	110	3	20	1	12	12	308
47	189	155	15	25	4	6	16	410
47A	162	112	40	25	4	8	20	371
48	127	128	115	4	7	17	35	433
48A	129	186	67	13	3	13	24	435
49	184	185	97	51	11	18	65	611
50	137	127	42	1	2	4	25	338
50A	189	114	24	1	0	6	3	337
51	365	107	33	7	5	22	12	551
52	94	130	37	22	8	6	5	302

Contd....

Polling Station Level Election Results

Winner, Runner-up and 3rd Party Position & Winning Margin According to Polling Stations in Imamganj Assembly in Assembly Election (AE) under Aurangabad Parliamentary Constituency in Bihar (2020)

Polling Station Number	Winner Party	Winner Votes (%)	Runner-up Party	Runner-up Votes (%)	Winning Margin Votes (%)	Third Party	Third Party Votes (%)	Other Votes (%)
52A	RJD	179 (46.74)	HAMS	124 (32.38)	55 (14.36)	LJP	43 (11.23)	37 (9.66)
53	HAMS	303 (57.06)	RJD	131 (24.67)	172 (32.39)	LJP	48 (9.04)	49 (9.23)
54	RJD	124 (40.26)	HAMS	119 (38.64)	5 (1.62)	JAPL	29 (9.42)	36 (11.69)
54A	RJD	190 (65.74)	HAMS	61 (21.11)	129 (44.63)	JAPL	14 (4.84)	24 (8.3)
55	HAMS	215 (44.06)	RJD	126 (25.82)	89 (18.24)	LJP	96 (19.67)	51 (10.45)
56	RJD	143 (45.54)	HAMS	123 (39.17)	20 (6.37)	LJP	35 (11.15)	13 (4.14)
56A	LJP	170 (45.82)	RJD	89 (23.99)	81 (21.83)	HAMS	64 (17.25)	48 (12.94)
57	HAMS	244 (77.71)	RJD	30 (9.55)	214 (68.16)	LJP	12 (3.82)	28 (8.92)
58	RJD	206 (48.47)	HAMS	128 (30.12)	78 (18.35)	LJP	36 (8.47)	55 (12.94)
59	HAMS	313 (55.89)	RJD	120 (21.43)	193 (34.46)	JAPL	51 (9.11)	76 (13.57)
60	HAMS	174 (40)	LJP	152 (34.94)	22 (5.06)	RJD	27 (6.21)	82 (18.85)
61	HAMS	218 (55.05)	RJD	68 (17.17)	150 (37.88)	LJP	65 (16.41)	45 (11.36)
62	HAMS	112 (82.35)	RJD	10 (7.35)	102 (75)	LJP	6 (4.41)	8 (5.88)
63	HAMS	181 (55.69)	RJD	80 (24.62)	101 (31.07)	LJP	33 (10.15)	31 (9.54)
64	RJD	135 (47.54)	HAMS	100 (35.21)	35 (12.33)	RLSP	14 (4.93)	35 (12.32)
64A	RJD	156 (51.32)	HAMS	92 (30.26)	64 (21.06)	LJP	33 (10.86)	23 (7.57)
65	HAMS	134 (43.09)	RJD	92 (29.58)	42 (13.51)	JAPL	32 (10.29)	53 (17.04)
66	NV	NV (NV)	NV	NV (NV)	NV (NV)	NV	NV (NV)	NV (NV)
67	RJD	150 (36.76)	LJP	110 (26.96)	40 (9.8)	HAMS	93 (22.79)	55 (13.48)
68	HAMS	209 (55.88)	RJD	78 (20.86)	131 (35.02)	LJP	47 (12.57)	40 (10.7)
69	HAMS	165 (46.09)	LJP	78 (21.79)	87 (24.3)	RJD	75 (20.95)	40 (11.17)
70	HAMS	157 (40.26)	RJD	150 (38.46)	7 (1.8)	JAPL	31 (7.95)	52 (13.33)
71	HAMS	154 (38.02)	RJD	118 (29.14)	36 (8.88)	JAPL	63 (15.56)	70 (17.28)
72	HAMS	299 (50.59)	RJD	213 (36.04)	86 (14.55)	LJP	13 (2.2)	66 (11.17)
73	RJD	160 (35.87)	HAMS	149 (33.41)	11 (2.46)	JAPL	35 (7.85)	102 (22.87)
74	HAMS	307 (61.65)	RJD	94 (18.88)	213 (42.77)	LJP	57 (11.45)	40 (8.03)
74A	LJP	155 (32.7)	HAMS	133 (28.06)	22 (4.64)	RJD	110 (23.21)	76 (16.03)
75	HAMS	236 (42.91)	LJP	218 (39.64)	18 (3.27)	RJD	37 (6.73)	59 (10.73)
76	RJD	163 (46.84)	HAMS	97 (27.87)	66 (18.97)	LJP	48 (13.79)	40 (11.49)
77	HAMS	240 (64.34)	RJD	96 (25.74)	144 (38.6)	JAPL	6 (1.61)	31 (8.31)
77A	RJD	186 (52.25)	HAMS	102 (28.65)	84 (23.6)	RLSP	8 (2.25)	60 (16.85)
78	RJD	114 (66.28)	HAMS	39 (22.67)	75 (43.61)	LJP	5 (2.91)	14 (8.14)
79	HAMS	259 (78.48)	RJD	41 (12.42)	218 (66.06)	LJP	10 (3.03)	20 (6.06)
79A	HAMS	203 (55.16)	RJD	100 (27.17)	103 (27.99)	JAPL	13 (3.53)	52 (14.13)
80	HAMS	305 (70.28)	RJD	53 (12.21)	252 (58.07)	LJP	21 (4.84)	55 (12.67)

Contd....

Socio-Economic Amenities - Rural

Access to Education Facilities

Particulars	Number of Villages (% of Population)				
	Available	Not Available	If Not Available (Distance of Nearest Facility)		
			A	B	C
Govt. Primary School	278 (86)	113 (14)	69 (9)	44 (5)	0 (0)
Private Primary School	1 (0)	390 (100)	0 (0)	0 (0)	0 (0)
Govt. Middle School	112 (45)	279 (55)	186 (37)	49 (10)	41 (8)
Private Middle School	5 (1)	386 (99)	0 (0)	0 (0)	0 (0)
Govt. Secondary School	16 (9)	375 (91)	18 (8)	40 (10)	314 (72)
Private Secondary School	3 (1)	388 (99)	0 (0)	0 (0)	0 (0)
Govt. Senior Secondary School	3 (1)	388 (99)	30 (10)	44 (8)	311 (80)
Private Senior Secondary School	1 (0)	390 (100)	0 (0)	1 (0)	1 (0)
Govt. Arts and Science Degree College	1 (0)	390 (100)	0 (0)	6 (2)	384 (98)
Private Arts and Science Degree College	0 (0)	391 (100)	0 (0)	0 (0)	0 (0)
Govt. Engineering College	0 (0)	391 (100)	0 (0)	0 (0)	0 (0)
Private Engineering College	0 (0)	391 (100)	0 (0)	0 (0)	391 (100)
Govt. Medicine College	0 (0)	391 (100)	0 (0)	0 (0)	391 (100)
Private Medicine College	0 (0)	391 (100)	0 (0)	0 (0)	0 (0)
Govt. Management Institute	0 (0)	391 (100)	0 (0)	0 (0)	391 (100)
Private Management Institute	0 (0)	391 (100)	0 (0)	0 (0)	0 (0)
Govt. Polytechnic	0 (0)	391 (100)	0 (0)	0 (0)	391 (100)
Private Polytechnic	0 (0)	391 (100)	0 (0)	0 (0)	0 (0)
Govt. Vocational Training School/ITI	0 (0)	391 (100)	0 (0)	0 (0)	391 (100)
Private Vocational Training School/ITI	0 (0)	391 (100)	0 (0)	0 (0)	0 (0)
Govt. Non Formal Training Centre	0 (0)	391 (100)	0 (0)	0 (0)	391 (100)
Private Non Formal Training Centre	0 (0)	391 (100)	0 (0)	0 (0)	0 (0)
Govt. School For Disabled	0 (0)	391 (100)	0 (0)	0 (0)	391 (100)
Private School For Disabled	0 (0)	391 (100)	0 (0)	0 (0)	0 (0)
Government Others	0 (0)	391 (100)	0 (0)	0 (0)	391 (100)
Private Others	0 (0)	391 (100)	0 (0)	0 (0)	0 (0)

Note : Distance A : Less than 5 km; B : Between 5-10 km; C : 10+ km.; Source : Data Analysis is based on 2011 Census.

DISCLAIMER

The Terms of Use and Disclaimer of Datanet India Private Limited (hereinafter referred to as "Datanet") for use of this analysis report of **Imamganj Assembly Constituency (Imamganj Vidhan Sabha)** :-

1. **Assembly Factbook™** is a Registered Trade Mark owned by Datanet.
2. All the maps are sketched and graphical representation only and have not been drawn to the scale and also not to represent the actual geographical area or boundary of the unit.
3. The data for the aforesaid analysis is based on authentic sources and has been culled from the various publications of Census, CSO and NSSO for district and block level data, various central and state government departments, Central & State Elections Commissions and the concerned Returning Officers' releases, Electoral Rolls, Election results and allied publications, internal assessment, surveys, estimates and analysis. Therefore, certain adjustment of data at micro level may have been done to arrive closer to the macro data.
4. Data have been provided on an "As Is" and "As AVAILABLE" basis
5. The colours shown in the maps or diagram and charts of a particular party, alliance or AC are indicative and do not represent them.
6. This publication which includes maps, sheets, graphs and data would be the property under copyright of Datanet only. The user may use these for its internal study, analysis and research purposes. It's public display, re-selling or any commercial uses by the user are not allowed.
7. Datanet has taken due care and caution in compilation and processing of data and allied information, but does not guarantee the accuracy, adequacy or completeness of any information/analysis and will be not responsible for any errors or omissions or for the results obtained from the use of such information/analysis.
8. All the contents for the publication have been culled from various authentic sources and Datanet reasonably believes such sources to be reliable, but does not make any representations, express or implied as to the accuracy or fitness of use of such information. The information or contents of the information/analysis do not constitute advice and should not be relied upon in making (or refraining from making) any decision. Any reliance placed upon the information provided by Datanet is the sole responsibility and strictly at the user's risk.
9. In no event will Datanet be liable for any damages (including, without limitation, damages for loss of business projects, or loss of profits) arising in contract, tort or otherwise from the use of or inability to use any of its contents, or from any action taken (or refrained from being taken) as a result of using the analysis or any of its contents. Datanet its directors, owners, editors, officials, employees, distributor and agents or any associate will not be liable for any errors in the information contained or any consequences arising from the use of the contents of the provided information/analysis.
10. If any provision of these terms and conditions is held invalid or illegal or unenforceable for any reason by any court of competent jurisdiction, such provision shall be severed and the remainder of provisions of the terms and conditions shall continue in full force and effect as if the Term of Use had been executed with the invalid, illegal or unenforceable provision eliminated.
11. If there are any discrepancies in the information provided, please bring it to attention of Datanet for suitable rectification measures.

Buy Online This Complete Book At
Datanet India eBooks Store

www.indiastatpublications.com

or go directly at

[http://www.indiastatpublications.com/
Assembly_factbook/Bihar/Aurangabad/ Imamganj](http://www.indiastatpublications.com/Assembly_factbook/Bihar/Aurangabad/Imamganj)

 **indiastat**elections

ISBN : 978-93-5301-842-9



9 789353 018429