



Bihar

Assembly Factbook™

Bachhwara Assembly Constituency



Key Electoral Data of Bachhwara
Assembly Constituency (Vidhan Sabha)

Bihar

Assembly Factbook™

Bachhwara Assembly Constituency



Bachhwara Vidhan Sabha

Editor & Director

Dr. R.K. Thukral

Research Editor

Dr. Shafeeq Rahman

Compiled, Researched and Published by Datanet India Pvt. Ltd.

D-100, 1st Floor,

Okhla Industrial Area, Phase-I,
New Delhi- 110020.

Ph.: 91-11- 43580781-84

Email : support@indiastatpublications.com

Website : www.indiastatelections.com

Online Book Store :

www.indiastatpublications.com

Report No. : AFB/BR-142-0125

ISBN : 978-93-5301-811-5

First Edition : January, 2018

Eighth Updated Edition : January, 2025

Price : Rs. 11500/-

US\$ 310

© Datanet India Pvt. Ltd.

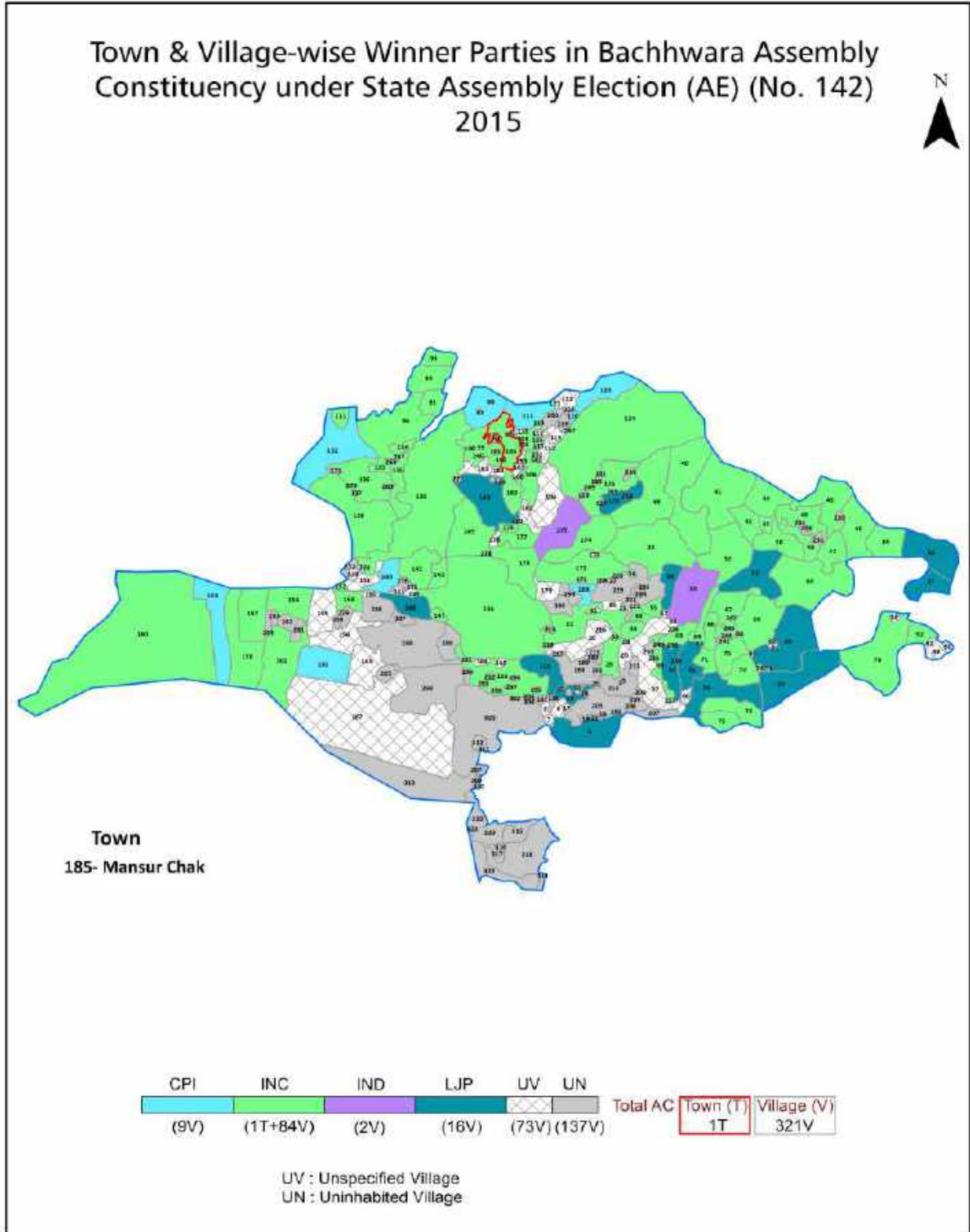
All rights reserved. No part of this book may be reproduced, stored in a retrieval system or transmitted in any form or by any means, mechanical photocopying, photographing, scanning, recording or otherwise without the prior written permission of the publisher. Please refer to Disclaimer at page no. 253 for the use of this publication.

Printed in India

Contents

No.	Particulars	Page No.
	Introduction	
1	Assembly Constituency - (Vidhan Sabha) at a Glance Features of Assembly as per Delimitation Commission of India (2008)	1-2
	Location and Political Maps	
2	Location Map Boundaries of Assembly Constituency - (Vidhan Sabha) in District Boundaries of Assembly Constituency under Parliamentary Constituency - (Lok Sabha) Town & Village-wise Winner Parties- 2024, 2020, 2019, 2015, 2014, 2010 and 2009	3-11
	Administrative Setup (2011)	
3	District Sub-district Towns Villages Inhabited Villages Uninhabited Villages Village Panchayat Intermediate Panchayat	12-23
	Demographics (2011)	
4	Population Households Rural/Urban Population Towns and Villages by Population Size Sex Ratio (Total & 0-6 Years) Religious Population Social Population Literacy Rate	24-25
	Electoral Features	
5	Important Dates of Last Elections Held Electors by Gender Service Electors Voters Voters Turnout Polling Stations & Average Number of Electors per Polling Station Electors by Age Group Present Elected Representatives	26-31
	Historical Summary Election Results	
6	Vote Share of Major Parties Winning Margin (Number & Percentage) Polarity of Parties Summary Result of Assembly Segment of Parliamentary Elections 2024, 2019, 2014, 2009, 2004 and 1999 Summary Result of Assembly Elections 2020, 2015, 2010, 2005 (Oct), 2005 (Feb), 2000, 1995, 1990, 1985, 1980, 1977, 1972, 1969, 1967, 1962, 1957 and 1952	32-57
	Polling Station Level Election Results	
7	Name and Number of Polling Station 2024, 2020, 2019, 2015, 2014, 2010 and 2009 Polling Station-wise Electors, Voters & Voters Turnout 2024, 2020, 2019, 2015, 2014, 2010 and 2009 Polling Station wise Elections Results 2024, 2020, 2019, 2015, 2014, 2010 and 2009	58-232
	Share of Assembly Constituency	
8	Share of Assembly Constituency - (Vidhan Sabha) in State, District and Parliamentary Constituency - (Lok Sabha)	233
	Socio-Economic Amenities (2011)	
9	Access to Administrative Units Agricultural, Manufacturing and Industrial Commodities Demographic Indicators Education Health & Manpower Drinking Water Supply Sanitation Entertainment and Recreations Infrastructure Power Food Allocation Distribution and Marketing of Agriculture Commodities Infrastructure Transport and Road Infrastructure Communication Banking and Financial Services Land Use Irrigation Source	235-249
10	Abbreviation & Sources	250-252
11	Disclaimer	253

Location & Political Map



Administrative Setup

List of Village Panchayat & Intermediate Panchayat (Block) Name - 2011

Village Name	Village Panchayat Name	Intermediate Panchayat Name
Agapur	Samsa	Mansurchak
Alam Chak	Mansurchak	Mansurchak
Alampur Kanhu	Rani	Bachhwara
Arazi Auganhingu	Damodarpur	Bhagwanpur
Arazi Auganhingu	Bhagwanpur	Bhagwanpur
Arazi Madhepura	Chandour	Bhagwanpur
Arazi Purkhotimpur	Bhagwanpur	Bhagwanpur
Arazi Rasalpur	Bhagwanpur	Bhagwanpur
Arazi Rasalpur Mahesh	Mehdouli	Bhagwanpur
Arwa	Arwa	Bachhwara
Atarua	Maheshpur	Bhagwanpur
Bachhwara	Bachhawara	Bachhwara
Badhalpur	Jokia	Bhagwanpur
Baghras	Lakhanpur	Bhagwanpur
Bahrampur	Baharampur	Mansurchak
Bahrampur	Ganpataul	Mansurchak
Bahrampur	Ganpataul	Mansurchak
Bahrampur	Ganpataul	Mansurchak
Bahrampur	Ganpataul	Mansurchak
Bahrampur	Ganpataul	Mansurchak
Bahrampur	Bhikhamchak	Bachhwara
Bandeya	Rasalpur	Bhagwanpur
Banwaripur	Bhagwanpur	Bhagwanpur
Basahi	Bhagwanpur	Bhagwanpur
Begam Sarai	Dadpur	Bachhwara
Bhadiha	Bhagwanpur	Bhagwanpur
Bhagwanpur	Bhagwanpur	Bhagwanpur
Bhagwanpur	Dadpur	Bachhwara
Bhagwanpur	Dadpur	Bachhwara

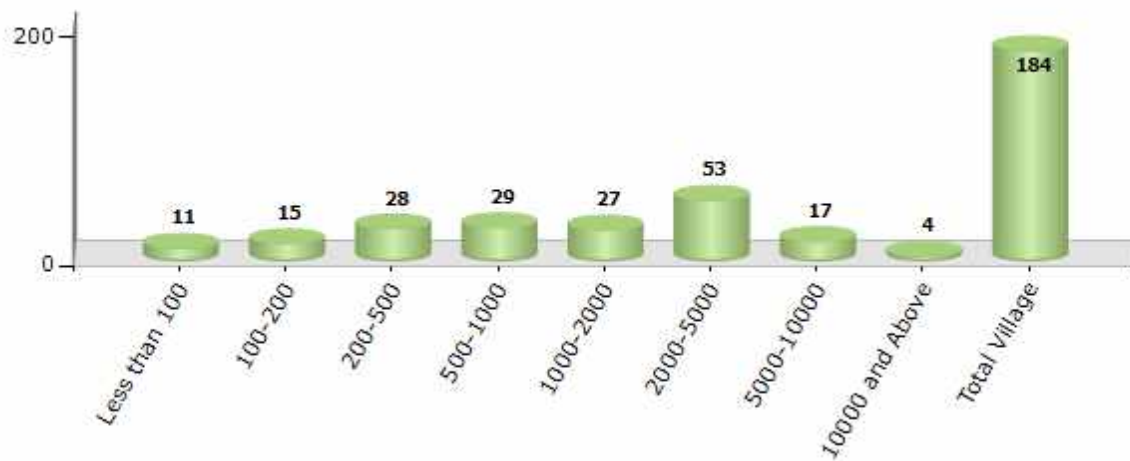
Contd....

Demographics

Number of Villages by Population Size - 2011

Less than 100	100-200	200-500	500-1000	1000-2000	2000-5000	5000-10000	10000 and Above	Total Village
11	15	28	29	27	53	17	4	184

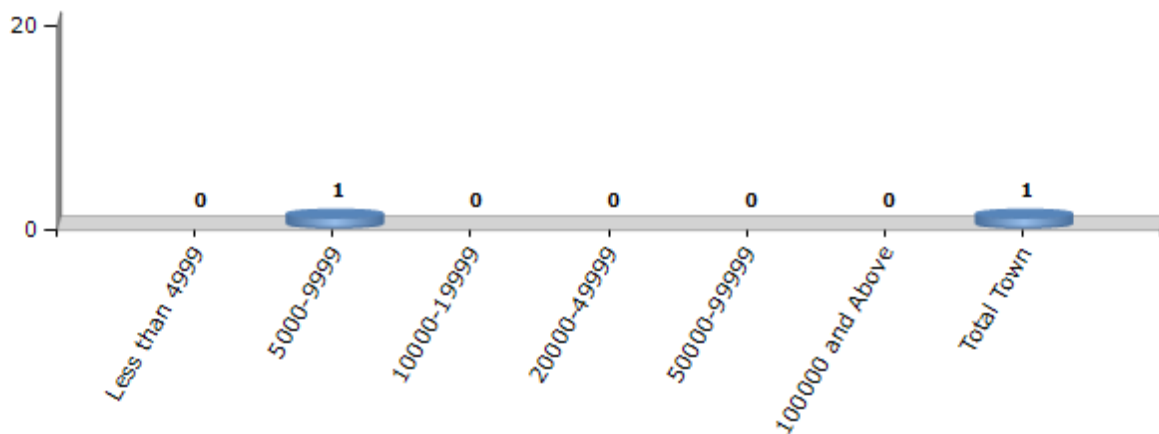
Number of Villages by Population Size - 2011



Number of Towns by Population Size - 2011

Less than 4999	5000-9999	10000-19999	20000-49999	50000-99999	100000 and Above	Total Town
0	1	0	0	0	0	1

Number of Towns by Population Size - 2011

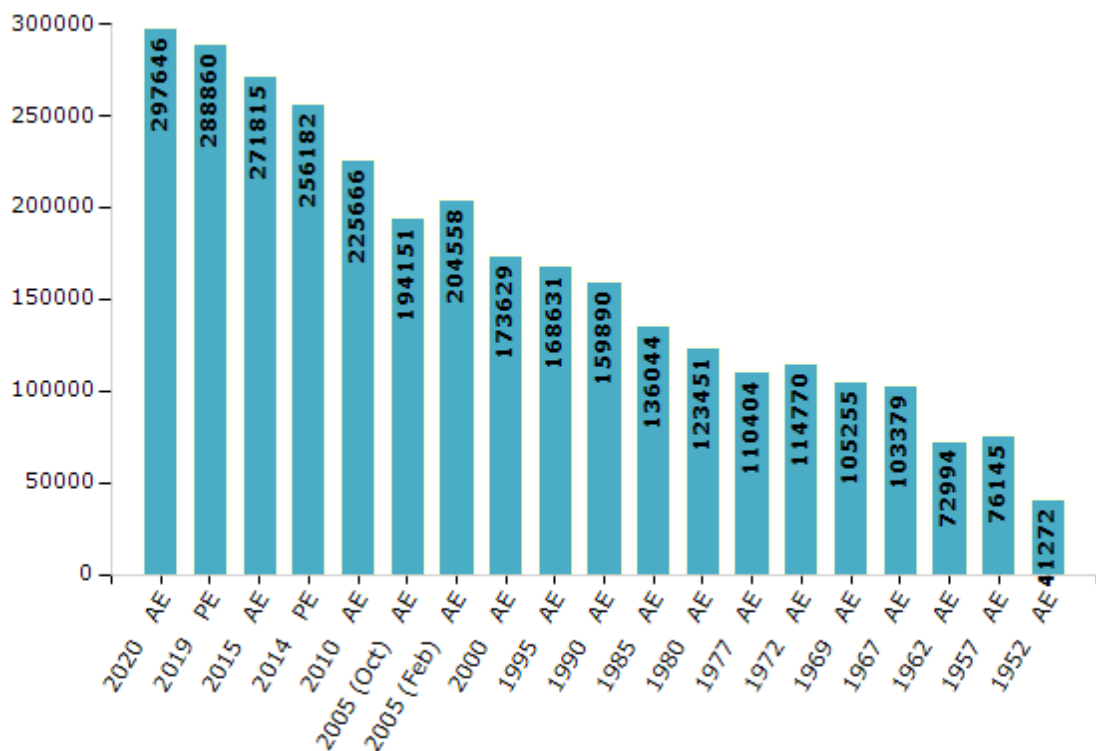


Electoral Features

Electors by Male & Female

Year	Male	Female	Others	Total	Year	Male	Female	Others	Total
2020 AE	158043	139595	8	297646	1995 AE	88423	80208	-	168631
2019 PE	153876	134981	3	288860	1990 AE	84001	75889	-	159890
2015 AE	145560	126250	5	271815	1985 AE	70885	65159	-	136044
2014 PE	136238	119940	4	256182	1980 AE	63777	59674	-	123451
2010 AE	119546	106120	0	225666	1977 AE	56982	53422	-	110404
2009 PE	-	-	-	-	1972 AE	63124	51646	-	114770
2005 (Oct) AE	103108	91043	-	194151	1969 AE	58147	47108	-	105255
2005 (Feb) AE	108790	95768	-	204558	1967 AE	-	-	-	103379
2004 PE	-	-	-	-	1962 AE	-	-	-	72994
2000 AE	91814	81815	-	173629	1957 AE	-	-	-	76145
1999 PE	-	-	-	-	1952 AE	-	-	-	41272

Number of Electors



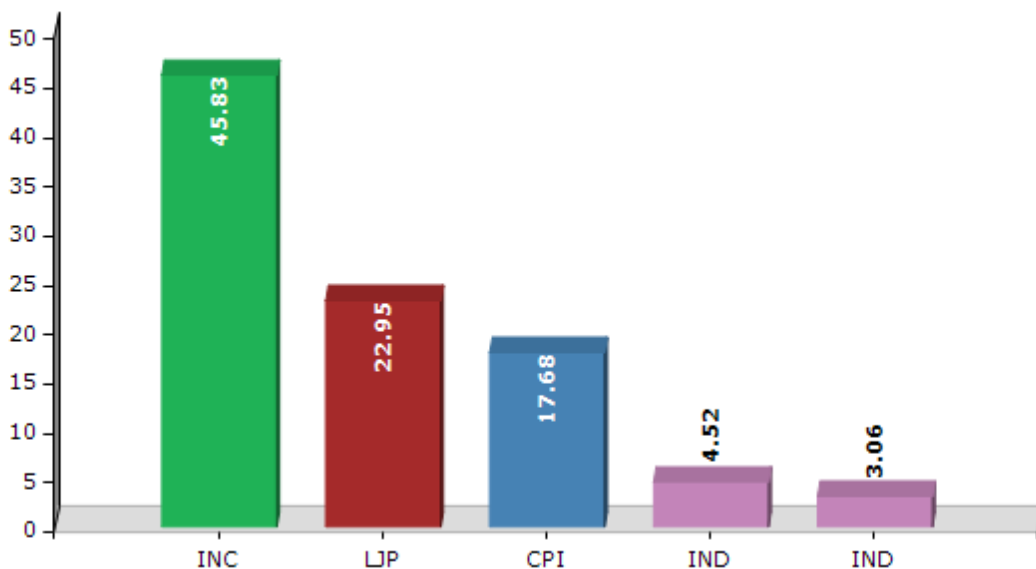
Note : AE : Assembly Election, PE : Assembly Segment of Parliamentary Election

Historical Summary Election Results

Summary Result of Assembly Election - 2015

Candidate Name	Party	Votes	Votes %
Ramdeo Rai	INC	73983	45.83
Arvind Kumar Singh	LJP	37052	22.95
Abdhesh Kumar Roy	CPI	28539	17.68
Subhash Kumar Ishwar	IND	7296	4.52
Binay Kumar Singh	IND	4944	3.06
Srimati Kundan Singh	JKNPP	1816	1.12
Shweta Suman Yadav	JAPL	1460	0.9
Chandeshwar Paswan	IND	1335	0.83
Naresh Paswan	BMUP	905	0.56
Ashok Sah	IND	799	0.49
	NOTA	3311	2.05

Votes Percentage of Top Parties - 2015



Polling Station Level Election Results

Number and Name of Polling Stations (PS) (2020)

Number of Polling Stations	Name of Polling Stations	Number of Polling Stations	Name of Polling Stations
1	Utakrmit Madhay Vidyalay Mahmadapur Mahesh	18	Uchcha Vidyalay Ahiyapur, Dakshin Bhag
2	Utakarmit Madhay Vidyalay Chhabilapur	18A	Uchcha Vidyalay Ahiyapur, Dakshin Bhag
3	Utakarmit Madhay Vidyalay, Milki	19	Uchcha Vidyalay Ahiyapur,Uttar Bhag
4	Utakarmit Urdu Madhay Vidhalay Gurdaspur Uttar Bhag	19A	Uchcha Vidyalay Ahiyapur,Uttar Bhag
5	Utakarmit Urdu Madhay Vidhalay Gurdaspur Dakshin Bhag	20	Uchch Vidhalay Ahiyapur Madhya Bhag
6	Madhay Vidhalay Satha Purab Bhag	21	Utkramit Madhya Vidyalay Dasharathapur Dakshin Bhag
6A	Madhay Vidhalay Satha Purab Bhag	21A	Utkramit Madhya Vidyalay Dasharathapur Dakshin Bhag
7	Madhay Vidhalay Satha Purab Madhay Bhag	22	Utkramit Madhya Vidyalay Dasharathapur Uttar Bhag
8	Madhya Vidyalay Satha Pashchim Bhag	22A	Utkramit Madhya Vidyalay Dasharathapur Uttar Bhag
8A	Madhya Vidyalay Satha Pashchim Bhag	23	Madhya Vidyalay Mansurachak, Uttar Bhag
9	Navsrijit Prathamik Vidhaly Takiya Temuha	23A	Madhya Vidyalay Mansurachak, Uttar Bhag
10	Utakarmit Uradu Madhay Vidhalay Temuha Paschim Bhag	24	Urdu Madhya Vidyalay Alamachak
10A	Utakarmit Uradu Madhay Vidhalay Temuha Paschim Bhag	25	Utkramit Madhya Vidyalay Bhavanipur Uttar Bhag
11	Utkramit Madhya Vidyalay Govindapur Uttar Bhag	26	Utkramit Madhya Vidhalay,Bhavanipur Dakshin Bhag
12	Utkramit Madhya Vidhalay Govindpur Dakshin Bhag	27	Madhya Vidyalay Mansurachak, Dakshini Bhag
13	Utkramit Madhya Vidyalay Mushahari Tola Govindapur Mushahari Purvi Bhag	28	Madhay Vidhalay Mansurchak Madhya Bhag Uttar Bhag
14	Utkramit Madhya Vidyalay Mushahari Tola Govindapur Mushahari Paschim Bhag	29	Utkramit Madhya Vidyalay Havasapur, Dakshin Bhag
15	Utkramit Madhya Vidyalay Dhakajari Dakshin Bhag	29A	Utkramit Madhya Vidyalay Havasapur, Dakshin Bhag
15A	Utkramit Madhya Vidyalay Dhakajari Dakshin Bhag	30	Utkramit Madhya Vidyalay Havasapur Uttar Bhag
16	Chalant Matdan Kendra Khata Sankhya 01 Khesra 236	31	Utkramit Madhya Vidhalay,Havaasapur,Dakshin Bhag Madhya Bhag
17	Utkramit Madhya Vidhalay, Farchhivan	32	Nar Narayan Sinha Uchcha Vidyalay Mansurachak,Sitht Ganpautol Uttar Bhag

Contd....

Polling Station Level Election Results

Polling Station-wise Votes Secured by Overall Top Five Parties in Bachhwara Assembly in Assembly Election (AE) under Begusarai Parliamentary Constituency in Bihar (2020)

Number of Polling Station	Winner - Surendra Mehata (BJP)	Runner-up - Abdhesh Kumar Rai (CPI)	3rd - Shiv Prakash Garib Das (IND)	4th - Indra Kumari (IND)	5th - Akhilesh Kumar (YKP)	NOTA	Other	Total Votes Secured
27	204	253	114	26	18	2	49	666
28	276	156	74	11	12	5	45	579
29	56	234	136	16	12	7	74	535
29A	48	133	111	4	7	3	17	323
30	141	231	77	29	21	1	74	574
31	100	269	89	31	5	4	51	549
32	166	53	50	1	6	0	20	296
32A	181	56	47	6	6	1	34	331
33	100	76	82	2	6	0	15	281
33A	124	163	49	8	6	2	32	384
34	159	105	76	14	9	0	36	399
34A	107	77	44	19	5	0	36	288
35	229	111	112	7	9	5	55	528
36	195	137	79	32	9	1	56	509
37	247	78	26	22	8	2	58	441
38	89	129	29	17	11	0	19	294
39	179	179	54	5	10	3	28	458
40	191	160	113	18	15	0	44	541
41	228	167	59	9	4	0	30	497
42	21	424	30	12	5	0	15	507
42A	126	221	101	37	11	1	31	528
43	156	75	87	29	7	1	33	388
43A	120	107	38	31	2	1	25	324
44	221	70	38	33	5	1	37	405
45	31	79	394	7	21	4	25	561
45A	101	72	121	12	10	1	32	349
46	165	61	53	97	18	4	121	519
46A	26	61	79	15	18	2	61	262
47	246	43	30	64	9	2	39	433
48	145	99	36	46	0	1	55	382
49	54	143	199	23	23	5	39	486
50	100	63	251	32	33	1	41	521
51	108	69	146	2	14	4	25	368
51A	108	49	175	3	12	6	26	379
52	135	106	294	21	29	6	48	639

Contd....

Polling Station Level Election Results

Winner, Runner-up and 3rd Party Position & Winning Margin According to Polling Stations in Bachhwara Assembly in Assembly Election (AE) under Begusarai Parliamentary Constituency in Bihar (2020)

Polling Station Number	Winner Party	Winner Votes (%)	Runner-up Party	Runner-up Votes (%)	Winning Margin Votes (%)	Third Party	Third Party Votes (%)	Other Votes (%)
53	IND (SPGD)	228 (54.81)	BJP	60 (14.42)	168 (40.39)	CPI	44 (10.58)	84 (20.19)
53A	IND (SPGD)	281 (63.15)	BJP	54 (12.13)	227 (51.02)	CPI	41 (9.21)	69 (15.51)
54	CPI	230 (59.43)	BJP	71 (18.35)	159 (41.08)	IND (SPGD)	45 (11.63)	41 (10.59)
55	CPI	243 (56.12)	BJP	96 (22.17)	147 (33.95)	IND (SPGD)	57 (13.16)	37 (8.55)
56	CPI	149 (45.29)	BJP	114 (34.65)	35 (10.64)	IND (SPGD)	15 (4.56)	51 (15.5)
56A	CPI	192 (58.54)	IND (SPGD)	64 (19.51)	128 (39.03)	BJP	42 (12.8)	30 (9.15)
57	CPI	232 (45.67)	BJP	126 (24.8)	106 (20.87)	IND (SPGD)	87 (17.13)	63 (12.4)
58	CPI	142 (31.7)	IND (SPGD)	126 (28.13)	16 (3.57)	BJP	125 (27.9)	55 (12.28)
58A	IND (SPGD)	156 (57.99)	CPI	62 (23.05)	94 (34.94)	BJP	16 (5.95)	35 (13.01)
59	BJP	330 (71.27)	CPI	56 (12.1)	274 (59.17)	IND (SPGD)	28 (6.05)	49 (10.58)
60	CPI	328 (55.13)	BJP	82 (13.78)	246 (41.35)	IND (SPGD)	55 (9.24)	130 (21.85)
61	CPI	204 (37.09)	IND (SPGD)	170 (30.91)	34 (6.18)	BJP	94 (17.09)	82 (14.91)
62	BJP	208 (46.64)	CPI	86 (19.28)	122 (27.36)	IND (IK)	72 (16.14)	80 (17.94)
63	BJP	184 (39.07)	CPI	136 (28.87)	48 (10.2)	IND (IK)	53 (11.25)	98 (20.81)
64	CPI	221 (51.4)	BJP	87 (20.23)	134 (31.17)	IND (SPGD)	83 (19.3)	39 (9.07)
65	CPI	204 (45.74)	BJP	135 (30.27)	69 (15.47)	IND (SPGD)	34 (7.62)	73 (16.37)
66	CPI	270 (53.15)	BJP	134 (26.38)	136 (26.77)	IND (SPGD)	51 (10.04)	53 (10.43)
67	CPI	158 (40.83)	IND (SPGD)	82 (21.19)	76 (19.64)	BJP	65 (16.8)	82 (21.19)
67A	CPI	273 (66.59)	IND (SPGD)	65 (15.85)	208 (50.74)	BJP	37 (9.02)	35 (8.54)
68	BJP	162 (38.21)	CPI	126 (29.72)	36 (8.49)	IND (SPGD)	77 (18.16)	59 (13.92)
69	CPI	177 (37.58)	BJP	119 (25.27)	58 (12.31)	IND (SPGD)	106 (22.51)	69 (14.65)
70	BJP	164 (42.71)	IND (SPGD)	94 (24.48)	70 (18.23)	IND (IK)	42 (10.94)	84 (21.88)
70A	IND (SPGD)	182 (44.5)	BJP	66 (16.14)	116 (28.36)	CPI	64 (15.65)	97 (23.72)
71	BJP	152 (31.02)	CPI	148 (30.2)	4 (0.82)	IND (SPGD)	70 (14.29)	120 (24.49)
72	CPI	218 (42.41)	BJP	144 (28.02)	74 (14.39)	IND (IK)	54 (10.51)	98 (19.07)
73	BJP	157 (41.76)	CPI	127 (33.78)	30 (7.98)	IND (SPGD)	20 (5.32)	72 (19.15)
73A	CPI	101 (25.51)	BJP	96 (24.24)	5 (1.27)	IND (SPGD)	96 (24.24)	103 (26.01)
74	BJP	302 (43.77)	IND (SPGD)	167 (24.2)	135 (19.57)	CPI	131 (18.99)	90 (13.04)
75	CPI	162 (35.68)	BJP	157 (34.58)	5 (1.1)	IND (SPGD)	39 (8.59)	96 (21.15)
75A	CPI	205 (49.88)	BJP	75 (18.25)	130 (31.63)	IND (SPGD)	44 (10.71)	87 (21.17)
76	BJP	305 (51.78)	IND (IK)	72 (12.22)	233 (39.56)	CPI	64 (10.87)	148 (25.13)
77	BJP	176 (52.69)	CPI	58 (17.37)	118 (35.32)	IND (IK)	27 (8.08)	73 (21.86)
77A	BJP	169 (48.84)	CPI	99 (28.61)	70 (20.23)	IND (SPGD)	26 (7.51)	52 (15.03)
78	CPI	156 (33.55)	IND (IK)	109 (23.44)	47 (10.11)	BJP	107 (23.01)	93 (20)
79	CPI	286 (56.86)	BJP	118 (23.46)	168 (33.4)	IND (SPGD)	38 (7.55)	61 (12.13)

Contd....

Socio-Economic Amenities - Rural

Access to Education Facilities

Particulars	Number of Villages (% of Population)				
	Available	Not Available	If Not Available (Distance of Nearest Facility)		
			A	B	C
Govt. Primary School	136 (83)	48 (17)	20 (4)	28 (13)	0 (0)
Private Primary School	16 (7)	168 (93)	0 (0)	0 (0)	0 (0)
Govt. Middle School	98 (73)	86 (27)	32 (8)	51 (18)	3 (1)
Private Middle School	10 (5)	174 (95)	0 (0)	0 (0)	0 (0)
Govt. Secondary School	12 (15)	172 (85)	0 (0)	0 (0)	171 (82)
Private Secondary School	0 (0)	184 (100)	0 (0)	0 (0)	1 (3)
Govt. Senior Secondary School	10 (14)	174 (86)	37 (15)	54 (30)	80 (40)
Private Senior Secondary School	1 (0)	183 (100)	1 (0)	1 (1)	0 (0)
Govt. Arts and Science Degree College	2 (1)	182 (99)	1 (0)	4 (1)	49 (34)
Private Arts and Science Degree College	0 (0)	184 (100)	2 (1)	34 (25)	92 (38)
Govt. Engineering College	0 (0)	184 (100)	0 (0)	0 (0)	0 (0)
Private Engineering College	0 (0)	184 (100)	2 (1)	3 (3)	179 (96)
Govt. Medicine College	0 (0)	184 (100)	0 (0)	0 (0)	184 (100)
Private Medicine College	0 (0)	184 (100)	0 (0)	0 (0)	0 (0)
Govt. Management Institute	0 (0)	184 (100)	0 (0)	0 (0)	31 (14)
Private Management Institute	0 (0)	184 (100)	0 (0)	0 (0)	153 (86)
Govt. Polytechnic	0 (0)	184 (100)	1 (0)	0 (0)	183 (100)
Private Polytechnic	0 (0)	184 (100)	0 (0)	0 (0)	0 (0)
Govt. Vocational Training School/ITI	0 (0)	184 (100)	0 (0)	0 (0)	184 (100)
Private Vocational Training School/ITI	0 (0)	184 (100)	0 (0)	0 (0)	0 (0)
Govt. Non Formal Training Centre	0 (0)	184 (100)	0 (0)	2 (0)	182 (100)
Private Non Formal Training Centre	0 (0)	184 (100)	0 (0)	0 (0)	0 (0)
Govt. School For Disabled	0 (0)	184 (100)	0 (0)	0 (0)	184 (100)
Private School For Disabled	0 (0)	184 (100)	0 (0)	0 (0)	0 (0)
Government Others	1 (2)	183 (98)	0 (0)	0 (0)	1 (0)
Private Others	1 (0)	183 (100)	0 (0)	0 (0)	0 (0)

Note : Distance A : Less than 5 km; B : Between 5-10 km; C : 10+ km.; Source : Data Analysis is based on 2011 Census.

DISCLAIMER

The Terms of Use and Disclaimer of Datanet India Private Limited (hereinafter referred to as "Datanet") for use of this analysis report of **Bachwara Assembly Constituency (Bachwara Vidhan Sabha)** :-

1. **Assembly Factbook™** is a Registered Trade Mark owned by Datanet.
2. All the maps are sketched and graphical representation only and have not been drawn to the scale and also not to represent the actual geographical area or boundary of the unit.
3. The data for the aforesaid analysis is based on authentic sources and has been culled from the various publications of Census, CSO and NSSO for district and block level data, various central and state government departments, Central & State Elections Commissions and the concerned Returning Officers' releases, Electoral Rolls, Election results and allied publications, internal assessment, surveys, estimates and analysis. Therefore, certain adjustment of data at micro level may have been done to arrive closer to the macro data.
4. Data have been provided on an "As Is" and "As AVAILABLE" basis
5. The colours shown in the maps or diagram and charts of a particular party, alliance or AC are indicative and do not represent them.
6. This publication which includes maps, sheets, graphs and data would be the property under copyright of Datanet only. The user may use these for its internal study, analysis and research purposes. It's public display, re-selling or any commercial uses by the user are not allowed.
7. Datanet has taken due care and caution in compilation and processing of data and allied information, but does not guarantee the accuracy, adequacy or completeness of any information/analysis and will be not responsible for any errors or omissions or for the results obtained from the use of such information/analysis.
8. All the contents for the publication have been culled from various authentic sources and Datanet reasonably believes such sources to be reliable, but does not make any representations, express or implied as to the accuracy or fitness of use of such information. The information or contents of the information/analysis do not constitute advice and should not be relied upon in making (or refraining from making) any decision. Any reliance placed upon the information provided by Datanet is the sole responsibility and strictly at the user's risk.
9. In no event will Datanet be liable for any damages (including, without limitation, damages for loss of business projects, or loss of profits) arising in contract, tort or otherwise from the use of or inability to use any of its contents, or from any action taken (or refrained from being taken) as a result of using the analysis or any of its contents. Datanet its directors, owners, editors, officials, employees, distributor and agents or any associate will not be liable for any errors in the information contained or any consequences arising from the use of the contents of the provided information/analysis.
10. If any provision of these terms and conditions is held invalid or illegal or unenforceable for any reason by any court of competent jurisdiction, such provision shall be severed and the remainder of provisions of the terms and conditions shall continue in full force and effect as if the Term of Use had been executed with the invalid, illegal or unenforceable provision eliminated.
11. If there are any discrepancies in the information provided, please bring it to attention of Datanet for suitable rectification measures.

**Buy Online This Complete Book At
Datanet India eBooks Store**

www.indiastatpublications.com

or go directly at

[http://www.indiastatpublications.com/
Assembly_factbook/Bihar/Begusarai/ Bachhwara](http://www.indiastatpublications.com/Assembly_factbook/Bihar/Begusarai/Bachhwara)

 **india**stat**elections**

ISBN : 978-93-5301-811-5



9 789353 018115