



Bihar

# Assembly Factbook™

Sahebpur Kamal Assembly Constituency



Key Electoral Data of Sahebpur Kamal  
Assembly Constituency (Vidhan Sabha)

Bihar

# Assembly Factbook™

Sahebpur Kamal Assembly Constituency



Sahebpur Kamal Vidhan Sabha

## **Editor & Director**

Dr. R.K. Thukral

## **Research Editor**

Dr. Shafeeq Rahman

## **Compiled, Researched and Published by Datanet India Pvt. Ltd.**

D-100, 1st Floor,

Okhla Industrial Area, Phase-I,  
New Delhi- 110020.

Ph.: 91-11- 43580781-84

Email : support@indiastatpublications.com

Website : www.indiastatelections.com

## **Online Book Store :**

www.indiastatpublications.com

**Report No. :** AFB/BR-145-0125

**ISBN :** 978-93-5301-858-0

**First Edition :** January, 2018

**Eighth Updated Edition :** January, 2025

**Price :** Rs. 11500/-

US\$ 310

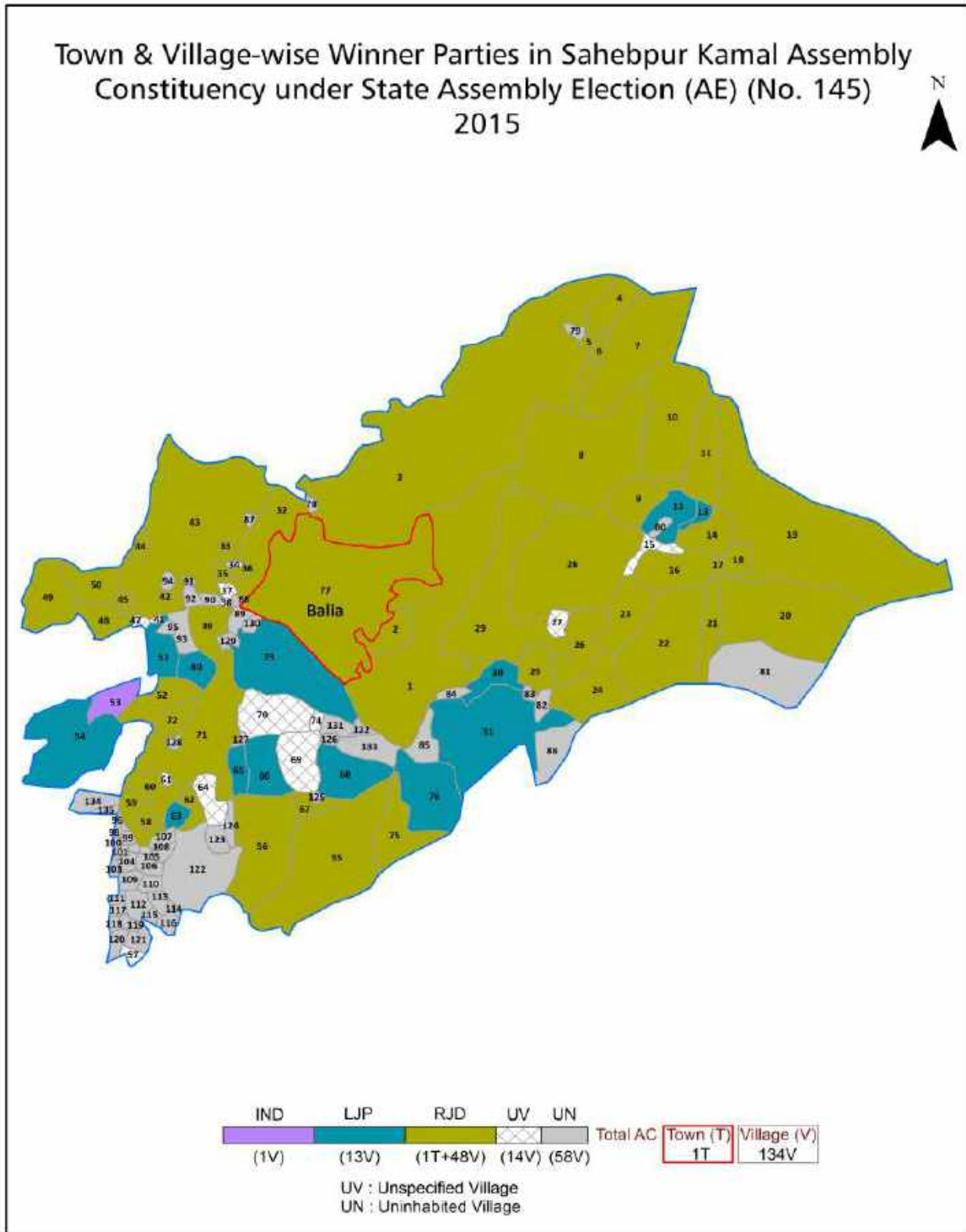
**© Datanet India Pvt. Ltd.**

All rights reserved. No part of this book may be reproduced, stored in a retrieval system or transmitted in any form or by any means, mechanical photocopying, photographing, scanning, recording or otherwise without the prior written permission of the publisher. Please refer to Disclaimer at page no. 207 for the use of this publication.

Printed in India

No.	Particulars	Page No.
	<b>Introduction</b>	
1	Assembly Constituency - (Vidhan Sabha) at a Glance   Features of Assembly as per Delimitation Commission of India (2008)	1-2
	<b>Location and Political Maps</b>	
2	Location Map   Boundaries of Assembly Constituency - (Vidhan Sabha) in District   Boundaries of Assembly Constituency under Parliamentary Constituency - (Lok Sabha)   Town & Village-wise Winner Parties- 2024, 2020, 2019, 2015, 2014, 2010 and 2009	3-11
	<b>Administrative Setup (2011)</b>	
3	District   Sub-district   Towns   Villages   Inhabited Villages   Uninhabited Villages   Village Panchayat   Intermediate Panchayat	12-16
	<b>Demographics (2011)</b>	
4	Population   Households   Rural/Urban Population   Towns and Villages by Population Size   Sex Ratio (Total & 0-6 Years)   Religious Population   Social Population   Literacy Rate	17-18
	<b>Electoral Features</b>	
5	Important Dates of Last Elections Held   Electors by Gender   Service Electors   Voters   Voters Turnout   Polling Stations & Average Number of Electors per Polling Station   Electors by Age Group   Present Elected Representatives	19-24
	<b>Historical Summary Election Results</b>	
6	Vote Share of Major Parties   Winning Margin (Number & Percentage)   Polarity of Parties   Summary Result of Assembly Segment of Parliamentary Elections 2024, 2019, 2014 and 2009   Summary Result of Assembly Elections 2020, 2015 and 2010	25-34
	<b>Polling Station Level Election Results</b>	
7	Name and Number of Polling Station 2024, 2020, 2019, 2015, 2014, 2010 and 2009   Polling Station-wise Electors, Voters & Voters Turnout 2024, 2020, 2019, 2015, 2014, 2010 and 2009   Polling Station wise Elections Results 2024, 2020, 2019, 2015, 2014, 2010 and 2009	35-186
	<b>Share of Assembly Constituency</b>	
8	Share of Assembly Constituency - (Vidhan Sabha) in State, District and Parliamentary Constituency - (Lok Sabha)	187
	<b>Socio-Economic Amenities (2011)</b>	
9	Access to Administrative Units   Agricultural, Manufacturing and Industrial Commodities   Demographic Indicators   Education   Health & Manpower   Drinking Water Supply   Sanitation   Entertainment and Recreations Infrastructure   Power   Food Allocation Distribution and Marketing of Agriculture Commodities Infrastructure   Transport and Road Infrastructure   Communication   Banking and Financial Services   Land Use   Irrigation Source	189-203
10	<b>Abbreviation &amp; Sources</b>	204-206
11	<b>Disclaimer</b>	207

Location & Political Map



## Administrative Setup

### List of Village Panchayat & Intermediate Panchayat (Block) Name - 2011

Village Name	Village Panchayat Name	Intermediate Panchayat Name
Achhe Chak	Achhe Chak	Sahebpur Kamal
Bakhda	Bakhda	Sahebpur Kamal
Bala Chak	Balachak	Balia
Bariarpur	Bariarpur	Balia
Barki Balia	Barki Balia	Balia
Bhagwatpur	Bhagwatpur	Balia
Bhawanandpur	Bhawanand Pur	Balia
Bishunpur	Bishunpur	Balia
Bishunpur Ahok	Bishunpur Ahok	Sahebpur Kamal
Chak Sharif	Chak Sharif	Balia
Chauki	Chauki	Sahebpur Kamal
Danauli	Pokharia	Balia
Dondi Chak	Dondi Chak	Balia
Fatehpur	Fatehpur	Balia
Gobindpur	Gobindpur	Sahebpur Kamal
Hanumannagar	Hanumannagar	Balia
Hetampur	Hetampur	Balia
Huseni Chak	Nurjamanpur	Balia
Huseni Chak	Salechak	Balia
Kadam Rasul	Kadam Rasul	Balia
Kadam Rasul	Kadam Rasul	Balia
Kalyanpur	Kalyanpur	Sahebpur Kamal
Kamalpur	Kamalpur	Balia
Kasipur	Kasipur	Balia
Kazi Chak	Kazi Chak	Balia
Kishunpur	Kishunpur	Balia
Kishunpur	Kishunpur	Balia
Majhanpur	Ballialakhminia-Iv	Balia
Malhipur Barari	Malhipur	Sahebpur Kamal

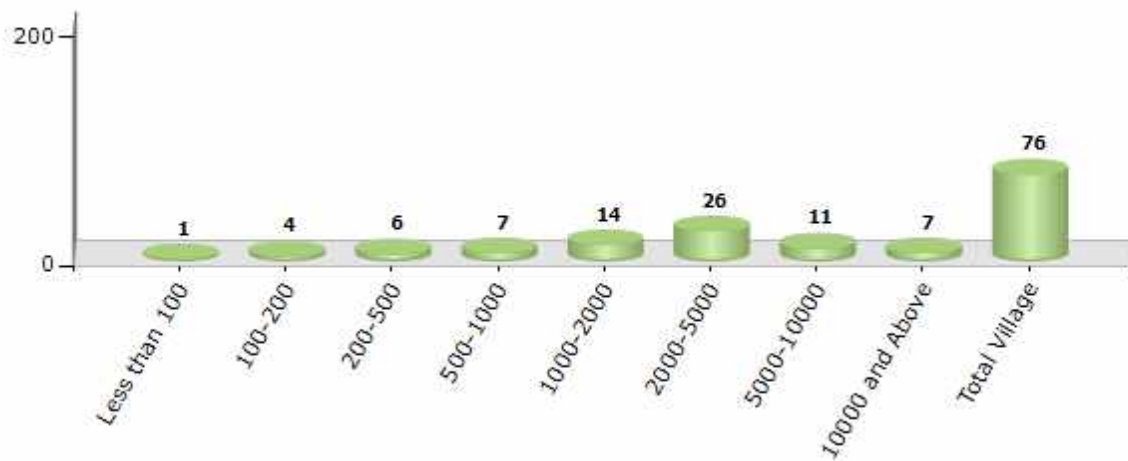
Contd....

## Demographics

### Number of Villages by Population Size - 2011

Less than 100	100-200	200-500	500-1000	1000-2000	2000-5000	5000-10000	10000 and Above	Total Village
1	4	6	7	14	26	11	7	76

Number of Villages by Population Size - 2011



### Number of Towns by Population Size - 2011

Less than 4999	5000-9999	10000-19999	20000-49999	50000-99999	100000 and Above	Total Town
0	0	0	1	0	0	1

Number of Towns by Population Size - 2011

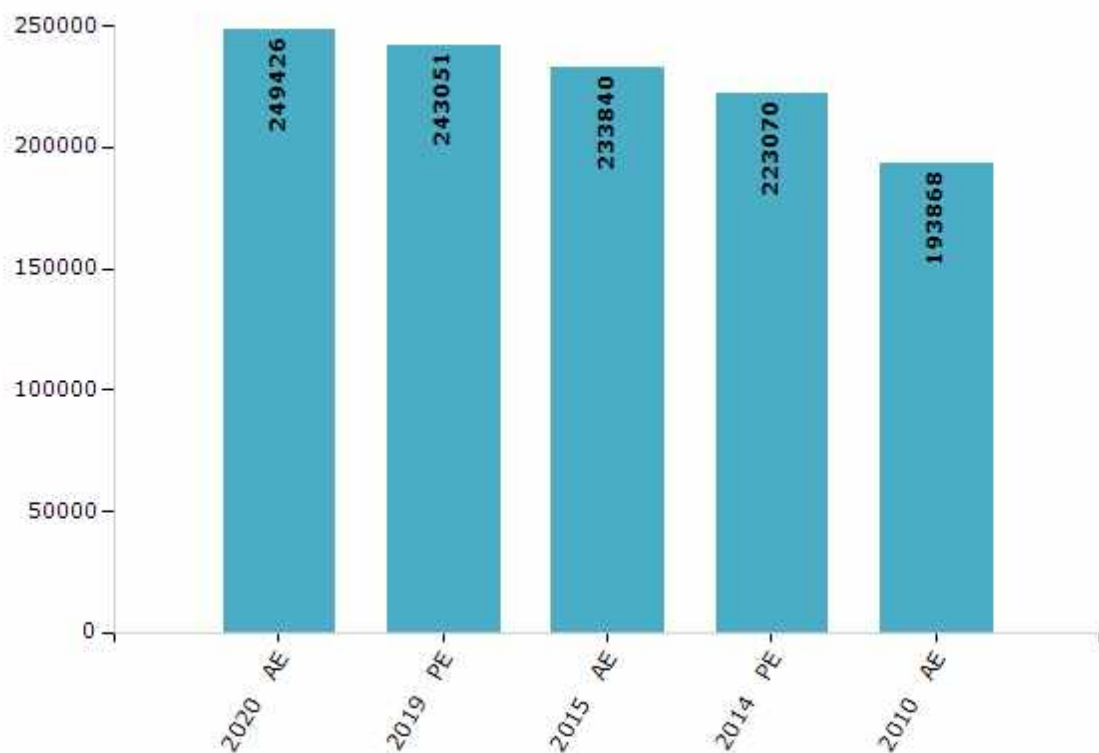


## Electoral Features

### Electors by Male & Female

Year	Male	Female	Others	Total	Year	Male	Female	Others	Total
2020 AE	131931	117487	8	249426	1995 AE	-	-	-	-
2019 PE	129688	113358	5	243051	1990 AE	-	-	-	-
2015 AE	125515	108317	8	233840	1985 AE	-	-	-	-
2014 PE	119518	103540	12	223070	1980 AE	-	-	-	-
2010 AE	104120	89748	0	193868	1977 AE	-	-	-	-
2009 PE	-	-	-	-	1972 AE	-	-	-	-
2005 (Oct) AE	-	-	-	-	1969 AE	-	-	-	-
2005 (Feb) AE	-	-	-	-	1967 AE	-	-	-	-
2004 PE	-	-	-	-	1962 AE	-	-	-	-
2000 AE	-	-	-	-	1957 AE	-	-	-	-
1999 PE	-	-	-	-	1952 AE	-	-	-	-

Number of Electors



Note : AE : Assembly Election, PE : Assembly Segment of Parliamentary Election

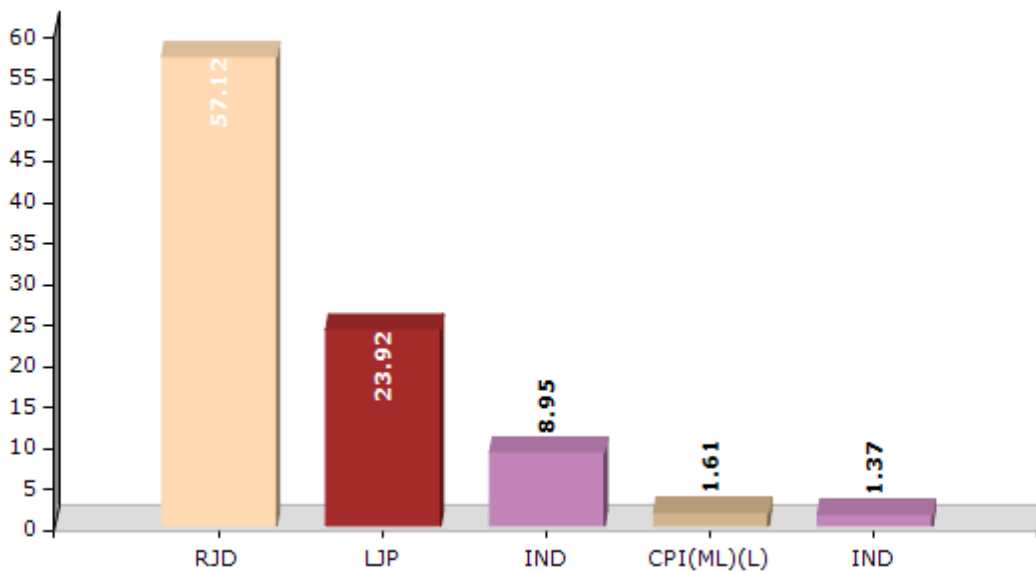


## Historical Summary Election Results

### Summary Result of Assembly Election - 2015

Candidate Name	Party	Votes	Votes %
Shreenarayan Yadav	RJD	78225	57.12
M.D. Aslam	LJP	32751	23.92
Surendra Vivek	IND	12259	8.95
S.M. Noor Alam	CPI(ML)(L)	2198	1.61
Maulana Kasim	IND	1874	1.37
Sarita Devi	BSP	1804	1.32
Raj Kumar Prasad	JAPL	1013	0.74
Dr. Ram Uday Sharma	SSD	819	0.6
Makkhan Sah	BJJD	724	0.53
Pravin Kumar	BMUP	685	0.5
Mobassir Ahmad	NADP	654	0.48
	NOTA	3941	2.88

Votes Percentage of Top Parties - 2015



## Polling Station Level Election Results

### Number and Name of Polling Stations (PS) (2020)

Number of Polling Stations	Name of Polling Stations	Number of Polling Stations	Name of Polling Stations
1	Madhya Vidyalay Fulavadiya Uttar Bhag	15A	Madhya Vidyalay Badi Baliya Paschm Bhag
1A	Madhya Vidyalay Fulavadiya Uttar Bhag	16	Madhya Vidyalay Badi Baliya Madhya Bhag
2	Prathamik Vidyalay Siraja Dakshin Bhag	17	Utkramti Madhya Vidyalay Shastri Nagar Hussaina
2A	Prathamik Vidyalay Siraja Dakshin Bhag	18	Kalavati Madhya Vidyalay Barbeeghi Purvi Bhag
3	Madhya Vidyalay Danauli Dakshin Bhag	19	Kalavati Madhya Vidyalay Barabighi Paschim Bhag
3A	Madhya Vidyalay Danauli Dakshin Bhag	20	Prathamik Vidyalay Tiyyarasari Badi Baliya Utar Bhag
4	Madhya Vidyalay Danauli Uttar Bhag	20A	Prathamik Vidyalay Tiyyarasari Badi Baliya Utar Bhag
5	Madhya Vidyalay Mazanapur	21	Prathamik Vidhyalya Tiyyarasari Badi Baliya Madhya Bhag
6	Utkramit Madhya Vidyalay Pokhadiya Dakshin Bhag	22	Prathamik Makatab Kasava Uttar Bhag
7	Utkramit Madhya Vidyalay Pokhadiya Paschim Bhag	22A	Prathamik Makatab Kasava Uttar Bhag
7A	Utkramit Madhya Vidyalay Pokhadiya Paschim Bhag	23	Kanya Urdu Madhya Vidyalay Kasava Madhya Bhag
8	Urdu Makatab Pokhadiya National Highway Ke Uttar Purvi Bhag	23A	Kanya Urdu Madhya Vidyalay Kasava Madhya Bhag
9	Urdu Makatab Pokhadiya National Highway Ke Uttar Paschim Bhag	24	Prathamik Makatab Kasava Dakshin Bhag
10	Prathamik Vidyalay Deeh Tol Pokhriya	24A	Prathamik Makatab Kasava Dakshin Bhag
11	Madhya Vidyalay Bari Baliya Uttari Bhawan Ka Paschmi Bhag	25	Prathamik Maktab Kaswa Purvi Bhag
11A	Madhya Vidyalay Bari Baliya Uttari Bhawan Ka Paschmi Bhag	25A	Prathamik Maktab Kaswa Purvi Bhag
12	Urdu Prathamik Vidyalay Momin Tol Bari Baliya Uttar Bhag	26	Anganbari Kendra Sankhya-19 Badi Baliya Uttari Purvi Bhag
12A	Urdu Prathamik Vidyalay Momin Tol Bari Baliya Uttar Bhag	27	Anganbari Kendra Sankhya- 19 Badi Baliya Uttari Dakshin Bhag
13	Madhya Vidyalay Badi Baliya Purab Bhag	28	Urdu Madhya Vidyalay Husainpur Purvi Bhag
14	Madhya Vidhyalya Badi Baliya Purvottar Bhag	28A	Urdu Madhya Vidyalay Husainpur Purvi Bhag
15	Madhya Vidyalay Badi Baliya Paschm Bhag	29	Urdu Madhya Vidyalay Husainpur Pashchimi Bhag

Contd....

## Polling Station Level Election Results

### Polling Station-wise Votes Secured by Overall Top Five Parties in Sahebpur Kamal Assembly in Assembly Election (AE) under Begusarai Parliamentary Constituency in Bihar (2020)

Number of Polling Station	Winner - Satanand Sambuddha @Lalan (RJD)	Runner-up - Shashikant Kumar Shashi Alias Amar Kumar Singh (JD(U))	3rd - Surendra Kumar Alias Surendra Vivek (LJP)	4th - Gore Lal Ray (AIMIM)	5th - Shyamal Prasad Yadav (IND)	NOTA	Other	Total Votes Secured
25	228	28	15	29	5	0	11	316
25A	233	24	5	20	6	8	4	300
26	120	248	38	5	11	31	12	465
27	208	149	23	28	6	12	12	438
28	114	45	59	8	4	8	8	246
28A	186	31	38	11	0	6	12	284
29	354	16	10	37	1	2	1	421
29A	303	38	23	30	4	4	2	404
30	155	295	26	3	10	13	14	516
31	107	306	17	8	4	13	5	460
32	154	395	9	3	2	24	3	590
33	461	86	6	7	13	8	9	590
34	191	10	23	37	3	1	7	272
34A	206	15	18	29	4	0	9	281
35	215	15	43	16	7	4	6	306
35A	253	30	35	16	14	8	29	385
36	102	158	252	1	5	13	30	561
37	142	266	36	2	9	8	14	477
38	292	235	99	3	9	13	23	674
39	278	64	241	4	5	5	15	612
40	79	157	33	7	3	6	13	298
40A	183	83	11	18	8	7	8	318
41	280	63	22	41	8	13	14	441
41A	193	100	34	6	8	10	11	362
42	200	158	38	2	9	9	6	422
42A	136	155	97	3	1	18	14	424
43	190	135	24	21	3	16	11	400
43A	172	145	38	12	2	2	11	382
44	132	131	98	8	7	3	35	414
44A	128	150	151	3	2	11	19	464
45	128	115	77	4	5	15	17	361
45A	82	152	72	7	6	7	21	347
46	324	22	8	20	2	1	4	381
46A	215	70	8	17	3	11	11	335
47	372	149	26	19	5	16	10	597

Contd....

## Polling Station Level Election Results

**Winner, Runner-up and 3rd Party Position & Winning Margin According to Polling Stations in Sahebpur Kamal Assembly in Assembly Election (AE) under Begusarai Parliamentary Constituency in Bihar (2020)**

Polling Station Number	Winner Party	Winner Votes (%)	Runner-up Party	Runner-up Votes (%)	Winning Margin Votes (%)	Third Party	Third Party Votes (%)	Other Votes (%)
48	RJD	390 (73.17)	AIMIM	103 (19.32)	287 (53.85)	JD(U)	16 (3)	24 (4.5)
49	RJD	369 (69.89)	AIMIM	99 (18.75)	270 (51.14)	JD(U)	21 (3.98)	39 (7.39)
50	JD(U)	364 (77.78)	RJD	62 (13.25)	302 (64.53)	LJP	9 (1.92)	33 (7.05)
50A	JD(U)	243 (53.17)	RJD	139 (30.42)	104 (22.75)	LJP	24 (5.25)	51 (11.16)
51	JD(U)	168 (40.88)	RJD	150 (36.5)	18 (4.38)	LJP	54 (13.14)	39 (9.49)
51A	JD(U)	189 (43.55)	RJD	143 (32.95)	46 (10.6)	LJP	56 (12.9)	46 (10.6)
52	RJD	192 (53.33)	JD(U)	80 (22.22)	112 (31.11)	AIMIM	42 (11.67)	46 (12.78)
52A	RJD	155 (40.68)	JD(U)	138 (36.22)	17 (4.46)	LJP	54 (14.17)	34 (8.92)
53	RJD	119 (33.15)	JD(U)	103 (28.69)	16 (4.46)	AIMIM	84 (23.4)	53 (14.76)
53A	RJD	131 (34.56)	JD(U)	131 (34.56)	0 (0)	AIMIM	43 (11.35)	74 (19.53)
54	JD(U)	315 (48.69)	RJD	181 (27.98)	134 (20.71)	LJP	115 (17.77)	36 (5.56)
55	JD(U)	382 (55.77)	LJP	168 (24.53)	214 (31.24)	RJD	110 (16.06)	25 (3.65)
56	LJP	237 (39.57)	JD(U)	214 (35.73)	23 (3.84)	RJD	104 (17.36)	44 (7.35)
57	RJD	269 (42.16)	JD(U)	197 (30.88)	72 (11.28)	LJP	131 (20.53)	41 (6.43)
58	RJD	488 (83.7)	LJP	33 (5.66)	455 (78.04)	AIMIM	33 (5.66)	29 (4.97)
59	RJD	344 (84.31)	AIMIM	27 (6.62)	317 (77.69)	JD(U)	13 (3.19)	24 (5.88)
60	RJD	227 (69.63)	IND (MS)	36 (11.04)	191 (58.59)	AIMIM	28 (8.59)	35 (10.74)
60A	RJD	224 (59.26)	JD(U)	41 (10.85)	183 (48.41)	IND (MS)	41 (10.85)	72 (19.05)
61	JD(U)	228 (41.68)	RJD	187 (34.19)	41 (7.49)	LJP	70 (12.8)	62 (11.33)
62	RJD	274 (73.07)	JD(U)	46 (12.27)	228 (60.8)	LJP	26 (6.93)	29 (7.73)
62A	RJD	179 (41.72)	JD(U)	166 (38.69)	13 (3.03)	LJP	56 (13.05)	28 (6.53)
63	RJD	602 (86.74)	AIMIM	22 (3.17)	580 (83.57)	IND (MS)	20 (2.88)	50 (7.2)
64	RJD	459 (84.07)	JD(U)	19 (3.48)	440 (80.59)	IND (MS)	17 (3.11)	51 (9.34)
65	RJD	183 (49.33)	JD(U)	149 (40.16)	34 (9.17)	LJP	23 (6.2)	16 (4.31)
65A	JD(U)	133 (41.56)	LJP	88 (27.5)	45 (14.06)	RJD	82 (25.63)	17 (5.31)
66	JD(U)	288 (57.14)	RJD	103 (20.44)	185 (36.7)	LJP	52 (10.32)	61 (12.1)
67	JD(U)	386 (80.75)	RJD	66 (13.81)	320 (66.94)	LJP	5 (1.05)	21 (4.39)
67A	JD(U)	204 (46.58)	RJD	166 (37.9)	38 (8.68)	LJP	50 (11.42)	18 (4.11)
68	RJD	217 (62.36)	JD(U)	77 (22.13)	140 (40.23)	LJP	18 (5.17)	36 (10.34)
68A	RJD	195 (52.14)	JD(U)	122 (32.62)	73 (19.52)	LJP	25 (6.68)	32 (8.56)
69	RJD	329 (49.4)	JD(U)	191 (28.68)	138 (20.72)	LJP	107 (16.07)	39 (5.86)
70	LJP	236 (48.26)	JD(U)	186 (38.04)	50 (10.22)	RJD	37 (7.57)	30 (6.13)
71	JD(U)	287 (48.81)	RJD	122 (20.75)	165 (28.06)	LJP	113 (19.22)	66 (11.22)
72	LJP	184 (33.27)	RJD	146 (26.4)	38 (6.87)	JD(U)	146 (26.4)	77 (13.92)
73	LJP	125 (30.41)	RJD	106 (25.79)	19 (4.62)	JD(U)	102 (24.82)	78 (18.98)

Contd....

**Socio-Economic Amenities - Rural**

**Access to Education Facilities**

Particulars	Number of Villages (% of Population)				
	Available	Not Available	If Not Available (Distance of Nearest Facility)		
			A	B	C
Govt. Primary School	60 (97)	16 (3)	7 (2)	8 (1)	0 (0)
Private Primary School	9 (6)	67 (94)	0 (0)	1 (0)	0 (0)
Govt. Middle School	45 (88)	31 (12)	15 (7)	15 (5)	0 (0)
Private Middle School	7 (5)	69 (95)	1 (0)	0 (0)	0 (0)
Govt. Secondary School	13 (33)	63 (67)	0 (0)	2 (1)	61 (66)
Private Secondary School	2 (2)	74 (98)	0 (0)	0 (0)	0 (0)
Govt. Senior Secondary School	1 (1)	75 (99)	12 (9)	25 (30)	34 (49)
Private Senior Secondary School	0 (0)	76 (100)	3 (9)	0 (0)	1 (1)
Govt. Arts and Science Degree College	2 (2)	74 (98)	1 (0)	8 (9)	54 (77)
Private Arts and Science Degree College	0 (0)	76 (100)	1 (0)	3 (4)	7 (6)
Govt. Engineering College	0 (0)	76 (100)	0 (0)	0 (0)	0 (0)
Private Engineering College	0 (0)	76 (100)	0 (0)	1 (1)	75 (99)
Govt. Medicine College	0 (0)	76 (100)	0 (0)	0 (0)	75 (98)
Private Medicine College	0 (0)	76 (100)	0 (0)	0 (0)	1 (2)
Govt. Management Institute	0 (0)	76 (100)	0 (0)	2 (3)	40 (55)
Private Management Institute	0 (0)	76 (100)	0 (0)	0 (0)	34 (42)
Govt. Polytechnic	0 (0)	76 (100)	0 (0)	4 (6)	72 (94)
Private Polytechnic	0 (0)	76 (100)	0 (0)	0 (0)	0 (0)
Govt. Vocational Training School/ITI	0 (0)	76 (100)	0 (0)	0 (0)	76 (100)
Private Vocational Training School/ITI	0 (0)	76 (100)	0 (0)	0 (0)	0 (0)
Govt. Non Formal Training Centre	1 (0)	75 (100)	1 (3)	1 (1)	72 (96)
Private Non Formal Training Centre	0 (0)	76 (100)	0 (0)	0 (0)	1 (1)
Govt. School For Disabled	0 (0)	76 (100)	0 (0)	0 (0)	76 (100)
Private School For Disabled	0 (0)	76 (100)	0 (0)	0 (0)	0 (0)
Government Others	0 (0)	76 (100)	0 (0)	0 (0)	0 (0)
Private Others	0 (0)	76 (100)	0 (0)	0 (0)	0 (0)

Note : Distance A : Less than 5 km; B : Between 5-10 km; C : 10+ km.; Source : Data Analysis is based on 2011 Census.

## DISCLAIMER

The Terms of Use and Disclaimer of Datanet India Private Limited (hereinafter referred to as "Datanet") for use of this analysis report of **Sahebpur Kamal Assembly Constituency (Sahebpur Kamal Vidhan Sabha)** :-

1. **Assembly Factbook™** is a Registered Trade Mark owned by Datanet.
2. All the maps are sketched and graphical representation only and have not been drawn to the scale and also not to represent the actual geographical area or boundary of the unit.
3. The data for the aforesaid analysis is based on authentic sources and has been culled from the various publications of Census, CSO and NSSO for district and block level data, various central and state government departments, Central & State Elections Commissions and the concerned Returning Officers' releases, Electoral Rolls, Election results and allied publications, internal assessment, surveys, estimates and analysis. Therefore, certain adjustment of data at micro level may have been done to arrive closer to the macro data.
4. Data have been provided on an "As Is" and "As AVAILABLE" basis
5. The colours shown in the maps or diagram and charts of a particular party, alliance or AC are indicative and do not represent them.
6. This publication which includes maps, sheets, graphs and data would be the property under copyright of Datanet only. The user may use these for its internal study, analysis and research purposes. It's public display, re-selling or any commercial uses by the user are not allowed.
7. Datanet has taken due care and caution in compilation and processing of data and allied information, but does not guarantee the accuracy, adequacy or completeness of any information/analysis and will be not responsible for any errors or omissions or for the results obtained from the use of such information/analysis.
8. All the contents for the publication have been culled from various authentic sources and Datanet reasonably believes such sources to be reliable, but does not make any representations, express or implied as to the accuracy or fitness of use of such information. The information or contents of the information/analysis do not constitute advice and should not be relied upon in making (or refraining from making) any decision. Any reliance placed upon the information provided by Datanet is the sole responsibility and strictly at the user's risk.
9. In no event will Datanet be liable for any damages (including, without limitation, damages for loss of business projects, or loss of profits) arising in contract, tort or otherwise from the use of or inability to use any of its contents, or from any action taken (or refrained from being taken) as a result of using the analysis or any of its contents. Datanet its directors, owners, editors, officials, employees, distributor and agents or any associate will not be liable for any errors in the information contained or any consequences arising from the use of the contents of the provided information/analysis.
10. If any provision of these terms and conditions is held invalid or illegal or unenforceable for any reason by any court of competent jurisdiction, such provision shall be severed and the remainder of provisions of the terms and conditions shall continue in full force and effect as if the Term of Use had been executed with the invalid, illegal or unenforceable provision eliminated.
11. If there are any discrepancies in the information provided, please bring it to attention of Datanet for suitable rectification measures.

**Buy Online This Complete Book At  
Datanet India eBooks Store**

[www.indiastatpublications.com](http://www.indiastatpublications.com)

or go directly at

[http://www.indiastatpublications.com/  
Assembly\\_factbook/Bihar/Begusarai/Sahebpur\\_Kamal](http://www.indiastatpublications.com/Assembly_factbook/Bihar/Begusarai/Sahebpur_Kamal)

 **india**stat**elections**

ISBN : 978-93-5301-858-0

