



Bihar

Assembly Factbook™

Pirpainti Assembly Constituency



Key Electoral Data of Pirpainti
Assembly Constituency (Vidhan Sabha)

Bihar

Assembly Factbook™

Pirpainti Assembly Constituency



Pirpainti Vidhan Sabha

Editor & Director

Dr. R.K. Thukral

Research Editor

Dr. Shafeeq Rahman

Compiled, Researched and Published by Datanet India Pvt. Ltd.

D-100, 1st Floor,

Okhla Industrial Area, Phase-I,
New Delhi- 110020.

Ph.: 91-11- 43580781-84

Email : support@indiastatpublications.com

Website : www.indiastatelections.com

Online Book Store :

www.indiastatpublications.com

Report No. : AFB/BR-154-0125

ISBN : 978-93-5301-852-8

First Edition : January, 2018

Eighth Updated Edition : January, 2025

Price : Rs. 11500/-

US\$ 310

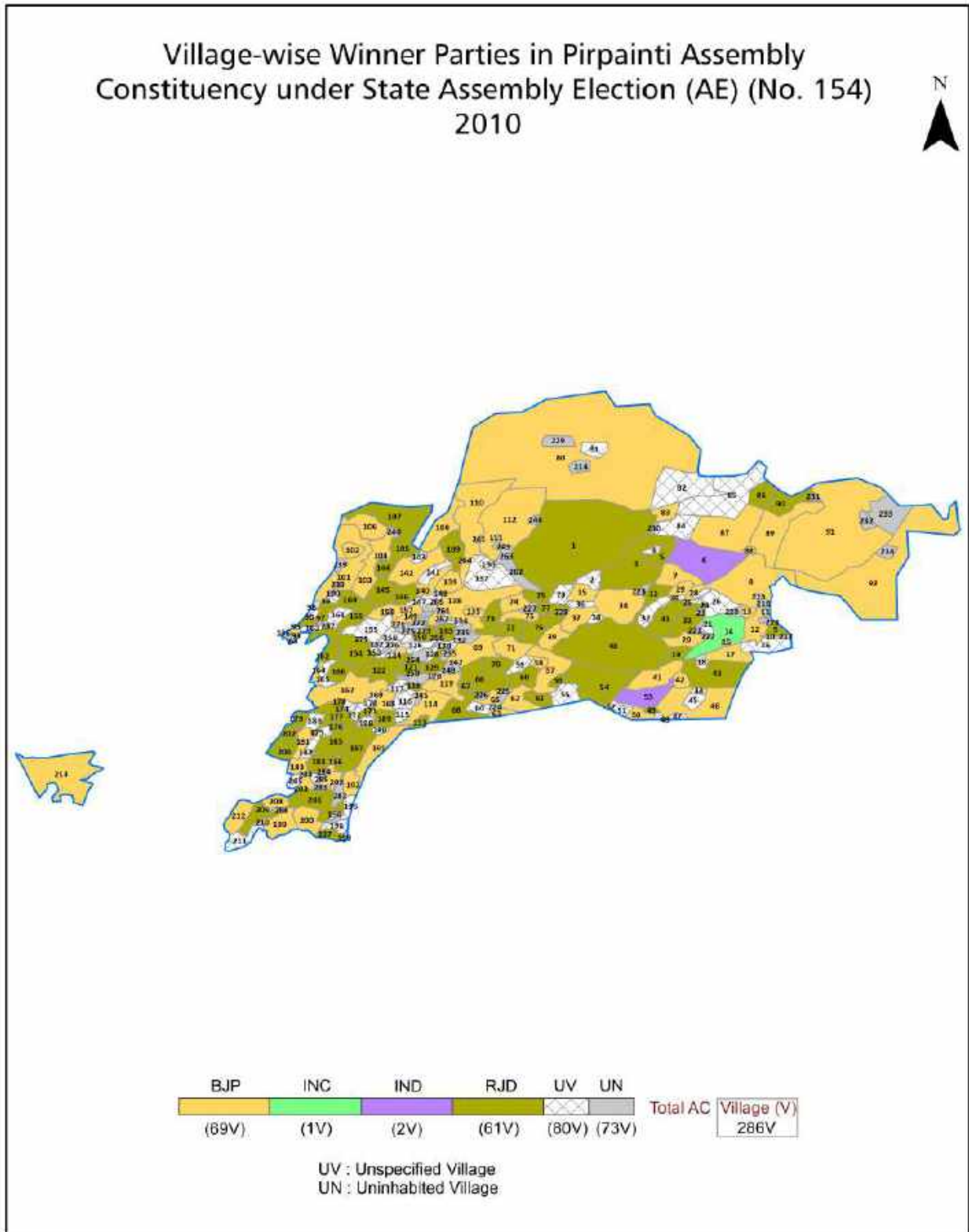
© Datanet India Pvt. Ltd.

All rights reserved. No part of this book may be reproduced, stored in a retrieval system or transmitted in any form or by any means, mechanical photocopying, photographing, scanning, recording or otherwise without the prior written permission of the publisher. Please refer to Disclaimer at page no. 226 for the use of this publication.

Printed in India

No.	Particulars	Page No.
	Introduction	
1	Assembly Constituency - (Vidhan Sabha) at a Glance Features of Assembly as per Delimitation Commission of India (2008)	1-2
	Location and Political Maps	
2	Location Map Boundaries of Assembly Constituency - (Vidhan Sabha in District Boundaries of Assembly Constituency under Parliamentary Constituency - (Lok Sabha) Village-wise Winner Parties- 2024, 2019, 2015, 2014, 2010 and 2009	3-11
	Administrative Setup (2011)	
3	District Sub-district Towns Villages Inhabited Villages Uninhabited Villages Village Panchayat Intermediate Panchayat	11-22
	Demographics (2011)	
4	Population Households Rural/Urban Population Villages by Population Size Sex Ratio (Total & 0-6 Years) Religious Population Social Population Literacy Rate	23-24
	Electoral Features	
5	Important Dates of Last Elections Held Electors by Gender Service Electors Voters Voters Turnout Polling Stations & Average Number of Electors per Polling Station Electors by Age Group Present Elected Representatives	25-30
	Historical Summary Election Results	
6	Vote Share of Major Parties Winning Margin (Number & Percentage Polarity of Parties Summary Result of Assembly Segment of Parliamentary Elections 2024, 2019, 2014, 2009, 2004 and 1999 Summary Result of Assembly Elections 2020, 2015, 2010, 2005 (Oct), 2005 (Feb), 2000, 1995, 1990, 1985, 1980, 1977, 1972, 1969, 1967, 1962, 1957 and 1952	31-56
	Polling Station Level Election Results	
7	Name and Number of Polling Station 2024, 2019, 2015, 2014, 2010 and 2009 Polling Station-wise Electors, Voters & Voters Turnout 2024, 2019, 2015, 2014, 2010 and 2009 Polling Station wise Elections Results 2024, 2019, 2015, 2014, 2010 and 2009	57-205
	Share of Assembly Constituency	
8	Share of Assembly Constituency - (Vidhan Sabha) in State, District and Parliamentary Constituency - (Lok Sabha)	206
	Socio-Economic Amenities (2011)	
9	Access to Administrative Units Agricultural, Manufacturing and Industrial Commodities Demographic Indicators Education Health & Manpower Drinking Water Supply Sanitation Entertainment and Recreations Infrastructure Power Food Allocation Distribution and Marketing of Agriculture Commodities Infrastructure Transport and Road Infrastructure Communication Banking and Financial Services Land Use Irrigation Source	208-222
10	Abbreviation & Sources	223-225
11	Disclaimer	226

Location & Political Map



Administrative Setup

List of Village Panchayat & Intermediate Panchayat (Block) Name - 2011

Village Name	Village Panchayat Name	Intermediate Panchayat Name
Abdullanagar	Akchari	Colgong
Akbarpur	Antichak	Colgong
Alipur	Akdara	Colgong
Amanat	Bakarpur West	Pirpainti
Amarpur	Nandlalpur	Colgong
Amba	Oriap	Colgong
Ammapali	Kirtaniya	Pirpainti
Antichak	Bholsr	Colgong
Aurangabad	Oriap	Colgong
Aurangabad	Oriap	Colgong
Aurangabad	Oriap	Colgong
Aurangabad	Oriap	Colgong
Babhangawan	Akdara	Colgong
Babhanua	Oriap	Colgong
Babupur	Hardechak	Pirpainti
Babupur Ogairah	Babupur	Pirpainti
Badluganj	Bara	Pirpainti
Bakarpur Ogairah	Bakarpur West	Pirpainti
Banaspati	Ogri	Colgong
Bansipur	Mathurapur	Colgong
Bara	Bara	Pirpainti
Barahamchari	Shampur	Colgong
Baraini	Mahesha Munda	Colgong
Barmotar Lakheraj	Salempur	Pirpainti
Basantpur	Harinkol	Pirpainti
Baskola	Bansipur	Colgong
Bhagalpur	Oriap	Colgong
Bhalua	Mathurapur	Colgong
Bhalua Sujan	Mathurapur	Colgong

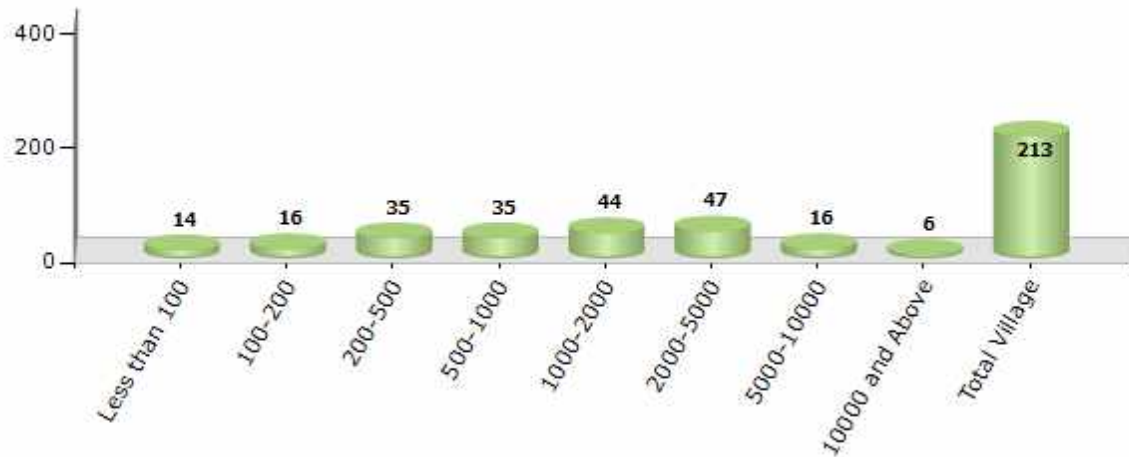
Contd....

Demographics

Number of Villages by Population Size - 2011

Less than 100	100-200	200-500	500-1000	1000-2000	2000-5000	5000-10000	10000 and Above	Total Village
14	16	35	35	44	47	16	6	213

Number of Villages by Population Size - 2011

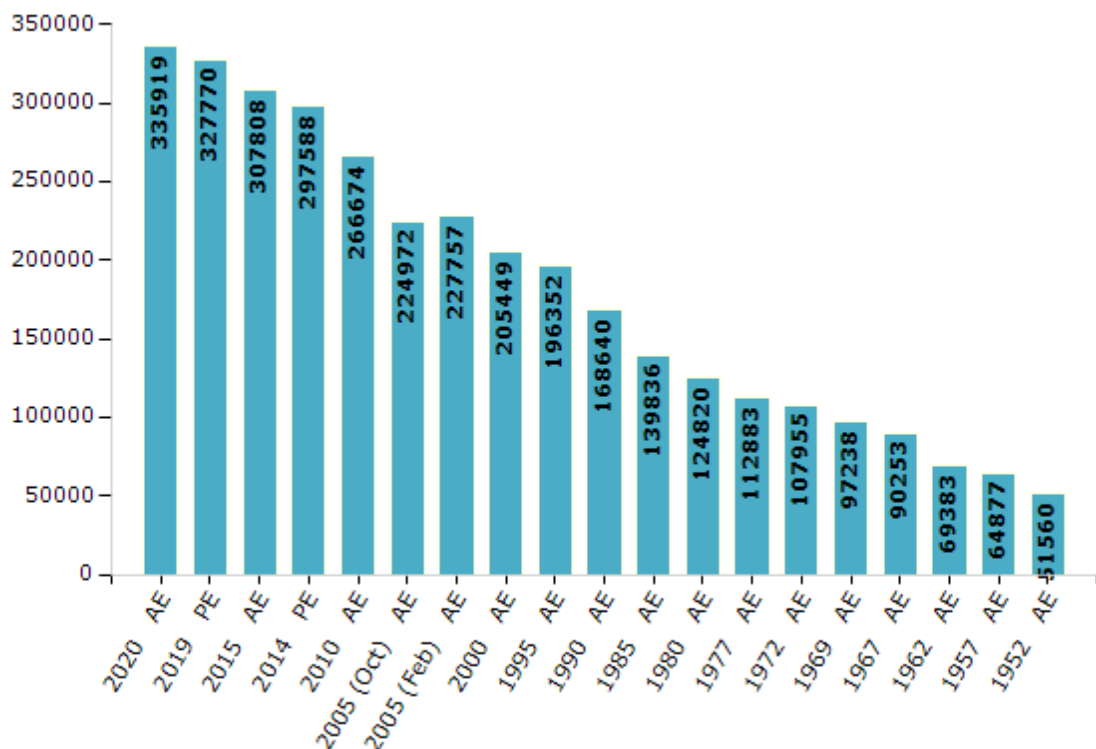


Electoral Features

Electors by Male & Female

Year	Male	Female	Others	Total	Year	Male	Female	Others	Total
2020 AE	179787	156123	9	335919	1995 AE	106910	89442	-	196352
2019 PE	175259	152502	9	327770	1990 AE	91684	76956	-	168640
2015 AE	164384	143418	6	307808	1985 AE	73549	66287	-	139836
2014 PE	158218	139365	5	297588	1980 AE	68669	56151	-	124820
2010 AE	144546	122128	0	266674	1977 AE	58076	54807	-	112883
2009 PE	-	-	-	-	1972 AE	54079	53876	-	107955
2005 (Oct) AE	120986	103986	-	224972	1969 AE	52536	44702	-	97238
2005 (Feb) AE	122360	105397	-	227757	1967 AE	-	-	-	90253
2004 PE	-	-	-	-	1962 AE	-	-	-	69383
2000 AE	111468	93981	-	205449	1957 AE	-	-	-	64877
1999 PE	-	-	-	-	1952 AE	-	-	-	51560

Number of Electors



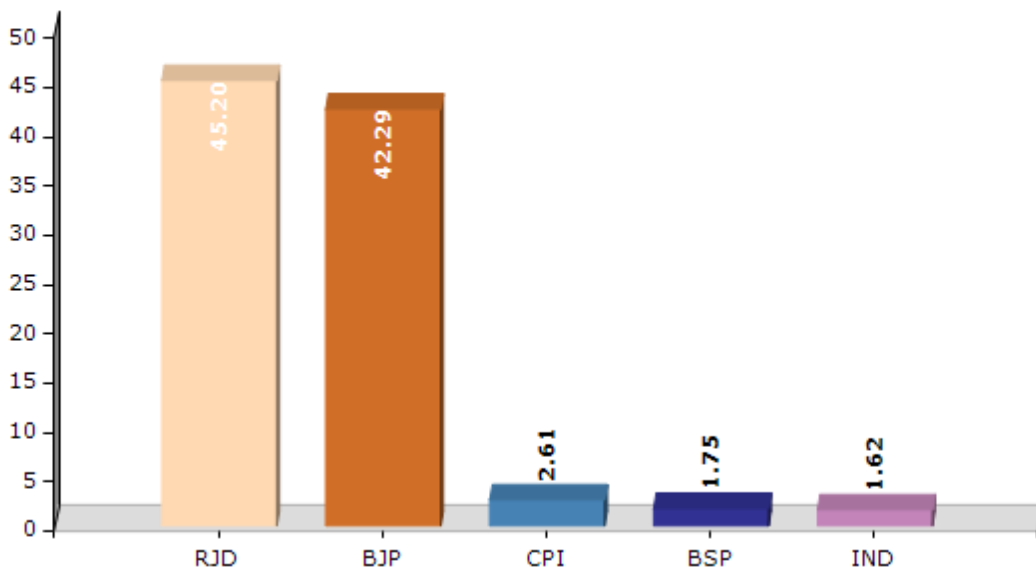
Note : AE : Assembly Election, PE : Assembly Segment of Parliamentary Election

Historical Summary Election Results

Summary Result of Assembly Election - 2015

Candidate Name	Party	Votes	Votes %
Ram Vilash Paswan	RJD	80058	45.2
Lalan Kumar	BJP	74914	42.29
Hiralal Paswan	CPI	4622	2.61
Parveen Nag	BSP	3103	1.75
Sudhir Kumar	IND	2878	1.62
Shivnarayan Paswan Urf Shivilal Paswan	IND	2210	1.25
Upendra Paswan	IND	1345	0.76
Sunil Paswan	JAPL	1065	0.6
Suresh Paswan	NTP	1012	0.57
Naresh Das	SKLP	908	0.51
Udhali Paswan	IND	879	0.5
	NOTA	4138	2.34

Votes Percentage of Top Parties - 2015



Polling Station Level Election Results

Number and Name of Polling Stations (PS) (2015)

Number of Polling Stations	Name of Polling Stations	Number of Polling Stations	Name of Polling Stations
1	Madhya Vidyalay Virabanna (Uttar Bhag)	20	Madhya Vidyalay Godhatta Madhya Bhag
2	Madhya Vidyalay Virabanna Madhya Bhag	21	Madhya Vidyalay Godhatta Uttar Bhag
3	Madhya Vidyalay Virabanna Dakshin Bhag	22	Panchayat Bhavan Mathurapur
4	Madhya Vidyalay Anthavan	23	Uchcha Vidyalay Mathurapur Purav Bhag
5	Sharada Pustakalay Dayalapur	24	Madhya Vidyalay Malakhanapur
6	Madhya Vidyalay Dayalapur	25	Uchcha Vidyalay Mathurapur Pashchim Bhag
6A	Madhya Vidyalay Dayalapur	26	Uchcha Vidyalay Mathurapur Madhya Bhag
7	Madhya Vidyalay Barohiya	27	Madarasa Islamiyan Ingalish Jageshwarapur
8	Prathamik Vidyalay Subbanagar	27A	Madarasa Islamiyan Ingalish Jageshwarapur
9	Prathamik Vidyalay Urdu Madarasa Kisanadasapur	28	Madhya Vidyalay Ramajanipur
9A	Prathamik Vidyalay Urdu Madarasa Kisanadasapur	29	Madhya Vidyalay Devari Pashchim Bhag
10	Natay Kala Manch Rani Diyara Uttar Bhag	30	Samudayik Bhavan Visunapur
11	Natay Kala Manch Rani Diyara Dakshin Bhag	31	Madhya Vidyalay Devari Purab Bhag
12	Madhya Vidyalay Nayanagar Rani Diyara	32	Prathamik Vidyalay Kutubapur
13	Madhya Vidyalay Kisanadasapur	33	Prathamik Vidyalay Babhanagama
14	Madhya Vidyalay Kachahariya (Dakshin Bhag)	34	Panchayat Bhavan Parashuramachak
15	Madhya Vidyalay Kachahariya (Uttar Bhag)	35	Madhya Vidyalay Parashuramachak
16	Madhya Vidyalay Buddhuchak Uttar Bhag	36	Prathamik Vidyalay Kurmichak
17	Madhya Vidyalay Buddhuchak Madhya Bhag	37	Madhya Vidyalay Ekadara Dakshin Bhag
18	Madhya Vidyalay Budhuchak Dakshin Bhag	38	Madhya Vidyalay Ekadara Uttari Bhag
19	Madhya Vidyalay Godhatta Dakshin Bhag	39	Panchayat Bhavan Ekadara

Contd....

Polling Station Level Election Results

Polling Station-wise Votes Secured by Overall Top Five Parties in Pirpainti Assembly in Assembly Election (AE) under Bhagalpur Parliamentary Constituency in Bihar (2015)

Number of Polling Station	Winner - Ram Vilash Paswan (RJD)	Runner-up - Lalan Kumar (BJP)	3rd - Hiralal Paswan (CPI)	4th - Parveen Nag (BSP)	5th - Sudhir Kumar (IND)	NOTA	Other	Total Votes Secured
33	476	128	25	18	10	17	27	701
34	265	279	3	3	12	7	15	584
35	99	136	3	1	3	3	8	253
36	255	323	18	11	11	21	53	692
37	140	414	8	7	6	15	22	612
38	214	103	15	6	4	12	15	369
39	321	35	11	4	6	19	7	403
40	455	65	3	8	4	16	19	570
41	278	173	8	17	11	17	31	535
42	366	218	18	6	69	11	27	715
43	332	204	31	7	9	14	28	625
44	338	346	12	8	152	32	52	940
45	194	206	40	9	43	19	20	531
46	168	390	9	4	8	19	12	610
47	285	215	11	9	4	7	12	543
48	432	380	14	6	15	33	50	930
49	264	255	10	18	37	19	42	645
50	186	378	11	10	4	10	27	626
51	413	373	19	15	16	26	51	913
52	514	129	22	37	22	24	215	963
53	357	66	7	12	6	5	64	517
54	418	208	18	19	11	27	149	850
55	417	53	28	12	3	19	54	586
56	532	186	47	11	15	29	44	864
57	418	88	19	13	7	26	31	602
58	371	102	66	3	9	13	36	600
59	299	322	12	59	2	8	8	710
60	312	404	0	6	10	17	19	768
61	372	485	14	16	14	14	45	960
62	422	434	15	34	8	12	37	962
63	48	141	5	3	3	5	21	226
64	389	291	15	35	7	15	36	788
65	369	281	5	9	11	10	13	698
66	302	287	4	8	8	8	36	653
67	331	197	6	10	24	20	30	618

Contd....

Polling Station Level Election Results

Winner, Runner-up and 3rd Party Position & Winning Margin According to Polling Stations in Pirpainti Assembly in Assembly Election (AE) under Bhagalpur Parliamentary Constituency in Bihar (2015)

Polling Station Number	Winner Party	Winner Votes (%)	Runner-up Party	Runner-up Votes (%)	Winning Margin Votes (%)	Third Party	Third Party Votes (%)	Other Votes (%)
68	RJD	158 (44.51)	BJP	152 (42.82)	6 (1.69)	CPI	7 (1.97)	38 (10.7)
69	RJD	444 (54.88)	BJP	271 (33.5)	173 (21.38)	CPI	27 (3.34)	67 (8.28)
70	RJD	459 (56.32)	BJP	277 (33.99)	182 (22.33)	BSP	22 (2.7)	57 (6.99)
71	RJD	306 (47.81)	BJP	263 (41.09)	43 (6.72)	IND (SK)	27 (4.22)	44 (6.88)
72	RJD	299 (58.63)	BJP	117 (22.94)	182 (35.69)	IND (SK)	16 (3.14)	78 (15.29)
73	BJP	115 (51.57)	RJD	90 (40.36)	25 (11.21)	IND (SK)	4 (1.79)	14 (6.28)
74	RJD	362 (61.46)	BJP	170 (28.86)	192 (32.6)	IND (SPUSP)	14 (2.38)	43 (7.3)
75	BJP	388 (52.22)	RJD	253 (34.05)	135 (18.17)	IND (SK)	17 (2.29)	85 (11.44)
76	RJD	238 (62.3)	BJP	100 (26.18)	138 (36.12)	JAPL	11 (2.88)	33 (8.64)
77	RJD	477 (87.52)	BJP	23 (4.22)	454 (83.3)	BSP	12 (2.2)	33 (6.06)
78	BJP	477 (55.4)	RJD	271 (31.48)	206 (23.92)	BSP	31 (3.6)	82 (9.52)
79	RJD	279 (49.12)	BJP	256 (45.07)	23 (4.05)	IND (SK)	9 (1.58)	24 (4.23)
80	RJD	398 (56.7)	BJP	140 (19.94)	258 (36.76)	BSP	67 (9.54)	97 (13.82)
81	BJP	255 (48.11)	RJD	248 (46.79)	7 (1.32)	JAPL	5 (0.94)	22 (4.15)
82	RJD	343 (69.29)	BJP	102 (20.61)	241 (48.68)	BSP	11 (2.22)	39 (7.88)
83	BJP	264 (43.28)	RJD	246 (40.33)	18 (2.95)	IND (SK)	48 (7.87)	52 (8.52)
84	BJP	273 (56.76)	RJD	162 (33.68)	111 (23.08)	CPI	10 (2.08)	36 (7.48)
85	RJD	478 (51.96)	BJP	336 (36.52)	142 (15.44)	CPI	22 (2.39)	84 (9.13)
86	BJP	538 (58.99)	RJD	249 (27.3)	289 (31.69)	CPI	35 (3.84)	90 (9.87)
87	RJD	393 (60.09)	BJP	177 (27.06)	216 (33.03)	BSP	20 (3.06)	64 (9.79)
88	RJD	236 (44.61)	BJP	236 (44.61)	0 (0)	IND (SK)	12 (2.27)	45 (8.51)
89	RJD	399 (74.3)	BJP	96 (17.88)	303 (56.42)	IND (SK)	13 (2.42)	29 (5.4)
90	RJD	591 (63.21)	BJP	260 (27.81)	331 (35.4)	BSP	26 (2.78)	58 (6.2)
91	RJD	290 (71.6)	BJP	82 (20.25)	208 (51.35)	BSP	6 (1.48)	27 (6.67)
92	RJD	604 (80.11)	BJP	72 (9.55)	532 (70.56)	IND (SK)	20 (2.65)	58 (7.69)
92A	RJD	150 (48.39)	BJP	145 (46.77)	5 (1.62)	CPI	2 (0.65)	13 (4.19)
93	BJP	260 (47.79)	RJD	230 (42.28)	30 (5.51)	IND (SK)	11 (2.02)	43 (7.9)
94	BJP	383 (66.38)	RJD	140 (24.26)	243 (42.12)	CPI	11 (1.91)	43 (7.45)
95	RJD	472 (69.82)	BJP	94 (13.91)	378 (55.91)	BSP	31 (4.59)	79 (11.69)
96	BJP	225 (61.64)	RJD	125 (34.25)	100 (27.39)	BSP	3 (0.82)	12 (3.29)
96A	BJP	356 (65.56)	RJD	152 (27.99)	204 (37.57)	CPI	7 (1.29)	28 (5.16)
97	BJP	212 (47.86)	RJD	141 (31.83)	71 (16.03)	IND (SPUSP)	37 (8.35)	53 (11.96)
98	RJD	380 (59.65)	BJP	152 (23.86)	228 (35.79)	BSP	57 (8.95)	48 (7.54)
99	BJP	320 (75.29)	RJD	78 (18.35)	242 (56.94)	NTP	5 (1.18)	22 (5.18)
100	BJP	364 (68.81)	RJD	126 (23.82)	238 (44.99)	BSP	19 (3.59)	20 (3.78)

Contd....

Socio-Economic Amenities - Rural

Access to Education Facilities

Particulars	Number of Villages (% of Population)				
	Available	Not Available	If Not Available (Distance of Nearest Facility)		
			A	B	C
Govt. Primary School	171 (92)	42 (8)	10 (1)	31 (7)	0 (0)
Private Primary School	9 (3)	204 (97)	0 (0)	0 (0)	0 (0)
Govt. Middle School	107 (73)	106 (27)	28 (6)	75 (20)	1 (1)
Private Middle School	6 (2)	207 (98)	0 (0)	0 (0)	0 (0)
Govt. Secondary School	14 (20)	199 (80)	0 (0)	6 (1)	189 (78)
Private Secondary School	0 (0)	213 (100)	0 (0)	0 (0)	4 (1)
Govt. Senior Secondary School	2 (2)	211 (98)	13 (4)	66 (18)	132 (76)
Private Senior Secondary School	0 (0)	213 (100)	0 (0)	0 (0)	0 (0)
Govt. Arts and Science Degree College	2 (2)	211 (98)	0 (0)	9 (2)	87 (56)
Private Arts and Science Degree College	0 (0)	213 (100)	2 (0)	22 (5)	91 (35)
Govt. Engineering College	0 (0)	213 (100)	0 (0)	0 (0)	0 (0)
Private Engineering College	0 (0)	213 (100)	0 (0)	0 (0)	213 (100)
Govt. Medicine College	0 (0)	213 (100)	0 (0)	0 (0)	212 (99)
Private Medicine College	0 (0)	213 (100)	0 (0)	0 (0)	1 (1)
Govt. Management Institute	0 (0)	213 (100)	0 (0)	0 (0)	77 (36)
Private Management Institute	0 (0)	213 (100)	0 (0)	1 (0)	135 (64)
Govt. Polytechnic	0 (0)	213 (100)	0 (0)	0 (0)	213 (100)
Private Polytechnic	0 (0)	213 (100)	0 (0)	0 (0)	0 (0)
Govt. Vocational Training School/ITI	0 (0)	213 (100)	0 (0)	0 (0)	210 (97)
Private Vocational Training School/ITI	0 (0)	213 (100)	0 (0)	0 (0)	3 (3)
Govt. Non Formal Training Centre	0 (0)	213 (100)	2 (2)	11 (3)	199 (93)
Private Non Formal Training Centre	0 (0)	213 (100)	0 (0)	0 (0)	1 (3)
Govt. School For Disabled	0 (0)	213 (100)	0 (0)	0 (0)	213 (100)
Private School For Disabled	0 (0)	213 (100)	0 (0)	0 (0)	0 (0)
Government Others	1 (2)	212 (98)	0 (0)	0 (0)	1 (0)
Private Others	0 (0)	213 (100)	0 (0)	0 (0)	0 (0)

Note : Distance A : Less than 5 km; B : Between 5-10 km; C : 10+ km.; Source : Data Analysis is based on 2011 Census.

DISCLAIMER

The Terms of Use and Disclaimer of Datanet India Private Limited (hereinafter referred to as "Datanet") for use of this analysis report of **Pirpainti Assembly Constituency (Pirpainti Vidhan Sabha) :-**

1. **Assembly Factbook™** is a Registered Trade Mark owned by Datanet.
2. All the maps are sketched and graphical representation only and have not been drawn to the scale and also not to represent the actual geographical area or boundary of the unit.
3. The data for the aforesaid analysis is based on authentic sources and has been culled from the various publications of Census, CSO and NSSO for district and block level data, various central and state government departments, Central & State Elections Commissions and the concerned Returning Officers' releases, Electoral Rolls, Election results and allied publications, internal assessment, surveys, estimates and analysis. Therefore, certain adjustment of data at micro level may have been done to arrive closer to the macro data.
4. Data have been provided on an "As Is" and "As AVAILABLE" basis
5. The colours shown in the maps or diagram and charts of a particular party, alliance or AC are indicative and do not represent them.
6. This publication which includes maps, sheets, graphs and data would be the property under copyright of Datanet only. The user may use these for its internal study, analysis and research purposes. It's public display, re-selling or any commercial uses by the user are not allowed.
7. Datanet has taken due care and caution in compilation and processing of data and allied information, but does not guarantee the accuracy, adequacy or completeness of any information/analysis and will be not responsible for any errors or omissions or for the results obtained from the use of such information/analysis.
8. All the contents for the publication have been culled from various authentic sources and Datanet reasonably believes such sources to be reliable, but does not make any representations, express or implied as to the accuracy or fitness of use of such information. The information or contents of the information/analysis do not constitute advice and should not be relied upon in making (or refraining from making) any decision. Any reliance placed upon the information provided by Datanet is the sole responsibility and strictly at the user's risk.
9. In no event will Datanet be liable for any damages (including, without limitation, damages for loss of business projects, or loss of profits) arising in contract, tort or otherwise from the use of or inability to use any of its contents, or from any action taken (or refrained from being taken) as a result of using the analysis or any of its contents. Datanet its directors, owners, editors, officials, employees, distributor and agents or any associate will not be liable for any errors in the information contained or any consequences arising from the use of the contents of the provided information/analysis.
10. If any provision of these terms and conditions is held invalid or illegal or unenforceable for any reason by any court of competent jurisdiction, such provision shall be severed and the remainder of provisions of the terms and conditions shall continue in full force and effect as if the Term of Use had been executed with the invalid, illegal or unenforceable provision eliminated.
11. If there are any discrepancies in the information provided, please bring it to attention of Datanet for suitable rectification measures.

Buy Online This Complete Book At
Datanet India eBooks Store

www.indiastatpublications.com

or go directly at

[http://www.indiastatpublications.com/
Assembly_factbook/Bihar/Bhagalpur/ Pirpanti](http://www.indiastatpublications.com/Assembly_factbook/Bihar/Bhagalpur/Pirpanti)

 **india**stat**elections**

ISBN : 978-93-5301-852-8

