



Bihar

Assembly Factbook™

Lalganj Assembly Constituency



Key Electoral Data of Lalganj
Assembly Constituency (Vidhan Sabha)

Bihar

Assembly Factbook™

Lalganj Assembly Constituency



Lalganj Vidhan Sabha

Editor & Director

Dr. R.K. Thukral

Research Editor

Dr. Shafeeq Rahman

Compiled, Researched and Published by Datanet India Pvt. Ltd.

D-100, 1st Floor,

Okhla Industrial Area, Phase-I,
New Delhi- 110020.

Ph.: 91-11- 43580781-84

Email : support@indiastatpublications.com

Website : www.indiastatelections.com

Online Book Store :

www.indiastatpublications.com

Report No. : AFB/BR-124-0125

ISBN : 978-93-5313-120-3

First Edition : January, 2018

Eighth Updated Edition : January, 2025

Price : Rs. 11500/-

US\$ 310

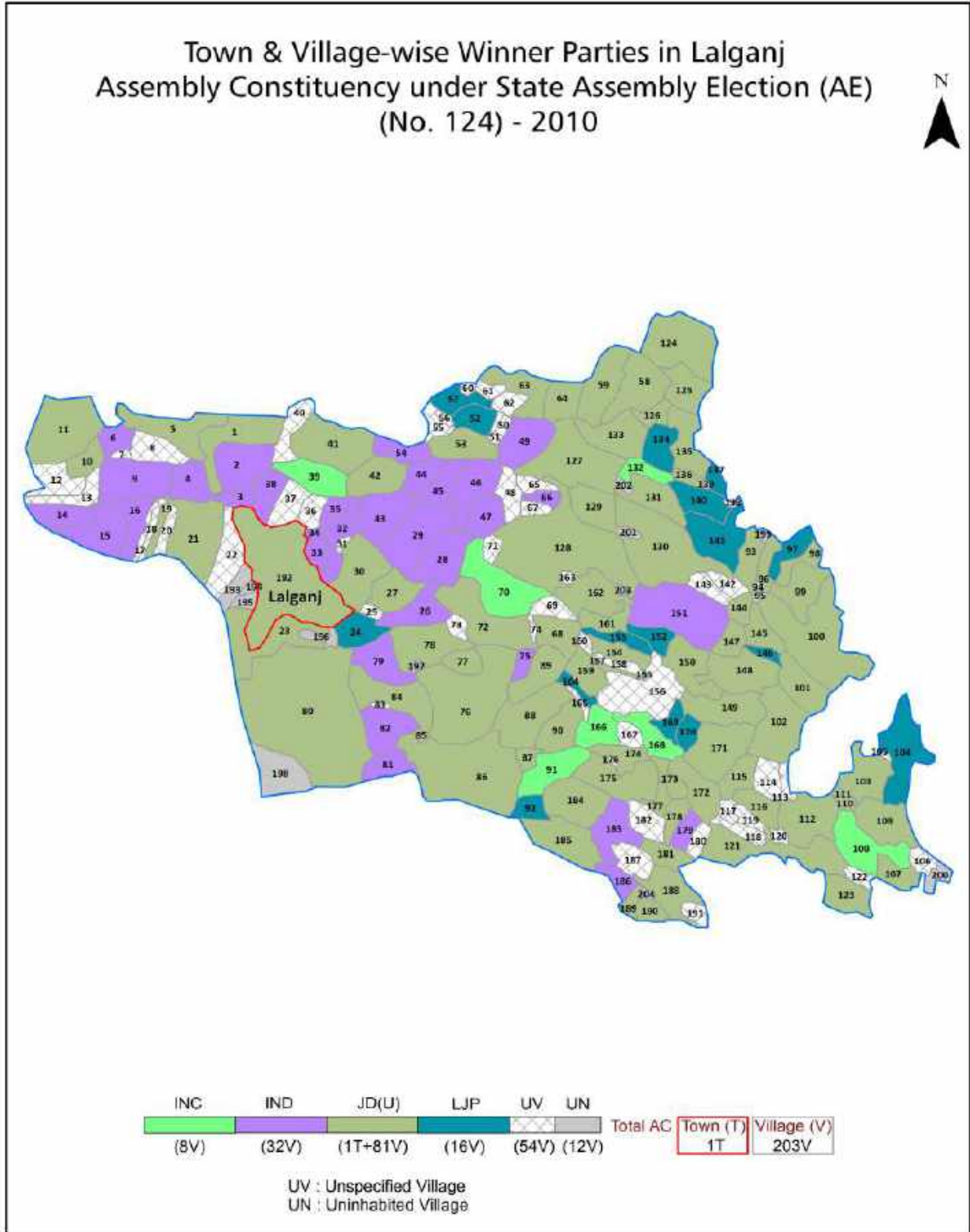
© Datanet India Pvt. Ltd.

All rights reserved. No part of this book may be reproduced, stored in a retrieval system or transmitted in any form or by any means, mechanical photocopying, photographing, scanning, recording or otherwise without the prior written permission of the publisher. Please refer to Disclaimer at page no. 239 for the use of this publication.

Printed in India

No.	Particulars	Page No.
	Introduction	
1	Assembly Constituency - (Vidhan Sabha) at a Glance Features of Assembly as per Delimitation Commission of India (2008)	1-2
	Location and Political Maps	
2	Location Map Boundaries of Assembly Constituency - (Vidhan Sabha) in District Boundaries of Assembly Constituency under Parliamentary Constituency - (Lok Sabha) Town & Village-wise Winner Parties- 2024, 2020, 2019, 2014, 2010 and 2009	3-11
	Administrative Setup (2011)	
3	District Sub-district Towns Villages Inhabited Villages Uninhabited Villages Village Panchayat Intermediate Panchayat	11-21
	Demographics (2011)	
4	Population Households Rural/Urban Population Towns and Villages by Population Size Sex Ratio (Total & 0-6 Years) Religious Population Social Population Literacy Rate	22-23
	Electoral Features	
5	Important Dates of Last Elections Held Electors by Gender Service Electors Voters Voters Turnout Polling Stations & Average Number of Electors per Polling Station Electors by Age Group Present Elected Representatives	24-29
	Historical Summary Election Results	
6	Vote Share of Major Parties Winning Margin (Number & Percentage) Polarity of Parties Summary Result of Assembly Segment of Parliamentary Elections 2024, 2019, 2014, 2009, 2004 and 1999 Summary Result of Assembly Elections 2020, 2015, 2010, 2005 (Oct), 2005 (Feb), 2000, 1995, 1990, 1985, 1980, 1977, 1972, 1969, 1967, 1962, 1957 and 1952	30-58
	Polling Station Level Election Results	
7	Name and Number of Polling Station 2024, 2020, 2019, 2014, 2010 and 2009 Polling Station-wise Electors, Voters & Voters Turnout 2024, 2020, 2019, 2014, 2010 and 2009 Polling Station wise Elections Results 2024, 2020, 2019, 2014, 2010 and 2009	59-219
	Share of Assembly Constituency	
8	Share of Assembly Constituency - (Vidhan Sabha) in State, District and Parliamentary Constituency - (Lok Sabha)	220
	Socio-Economic Amenities (2011)	
9	Access to Administrative Units Agricultural, Manufacturing and Industrial Commodities Demographic Indicators Education Health & Manpower Drinking Water Supply Sanitation Entertainment and Recreations Infrastructure Power Food Allocation Distribution and Marketing of Agriculture Commodities Infrastructure Transport and Road Infrastructure Communication Banking and Financial Services Land Use Irrigation Source	222-235
10	Abbreviation & Sources	236-238
11	Disclaimer	239

Location & Political Map



Administrative Setup

List of Village Panchayat & Intermediate Panchayat (Block) Name - 2011

Village Name	Village Panchayat Name	Intermediate Panchayat Name
Adhinpur	Atwaarpur	Lalganj
Ahirpur	Mian Bairo	Bhagwanpur
Akhtiarpur	Purainiyan	Lalganj
Akhtiarpur Mohan Urf Lautan	Gurmiya	Lalganj
Akhtiarpur Patera	Jahangirpur Paterha	Bhagwanpur
Alimuddinpur Chak	Madhopur Mahodat	Bhagwanpur
Andari	Anwarpur	Lalganj
Anjani	Madhupur Ram	Bhagwanpur
Anwarpur	Anwarpur	Lalganj
Asadnagar Batraul	Kharauna	Lalganj
Asadpur Sadpur	Harbanspur Banthu	Bhagwanpur
Asadpur Saidpur	Harbanspur Banthu	Bhagwanpur
Asadpur Saidpura	Hussaina Khurd	Bhagwanpur
Askaranpur	Madhopur Mahodat	Bhagwanpur
Asoi Lacchiram	Asoi Lacchiram	Bhagwanpur
Asoi Ragho	Asoi Lacchiram	Bhagwanpur
Bahlolpur	Ratanpura	Bhagwanpur
Bakhra Buzurg Urf Jagarnath	Purantaad	Lalganj
Bakhra Khurd	Manganpur	Bhagwanpur
Bara Dakhli	Purantaad	Lalganj
Barah Rup	Manganpur	Bhagwanpur
Barauna	Purainiyan	Lalganj
Basant jagarnath	Kharauna	Lalganj
Basant Jahanabad	Basanta Jahanabad	Lalganj
Bedauli	Shahdullahpur	Lalganj
Bhagwanpur	Wafapur Banthu	Bhagwanpur
Bhagwanpur Pakri	Lakshminarayanpur	Lalganj
Bhagwatpur Patera	Majhauri Mohammadpur Buzurg	Bhagwanpur
Bhagwatpur Paterha	Majhauri Mohammadpur Buzurg	Bhagwanpur

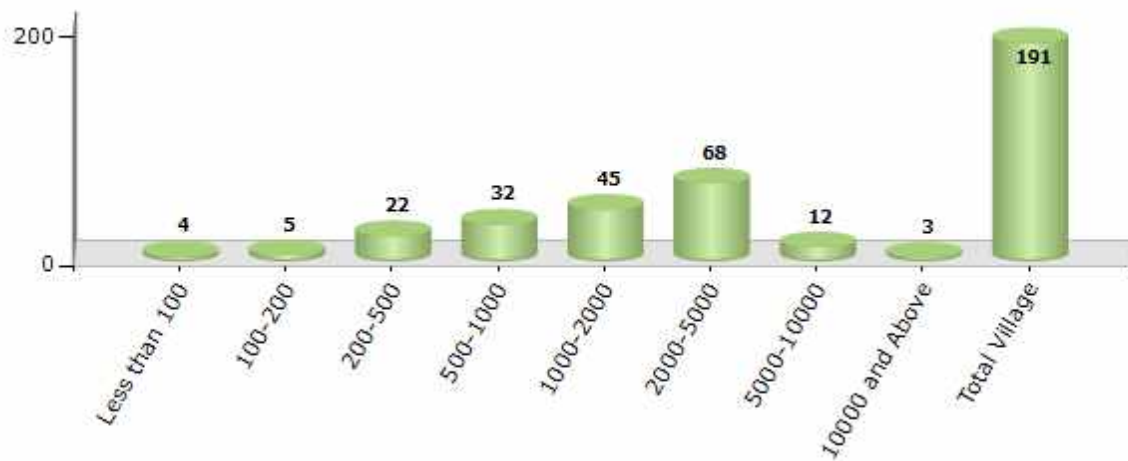
Contd....

Demographics

Number of Villages by Population Size - 2011

Less than 100	100-200	200-500	500-1000	1000-2000	2000-5000	5000-10000	10000 and Above	Total Village
4	5	22	32	45	68	12	3	191

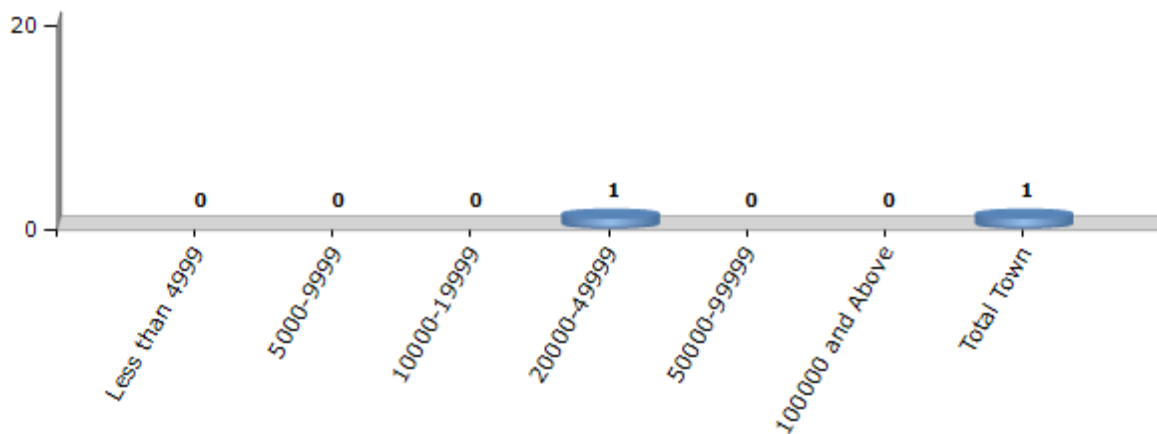
Number of Villages by Population Size - 2011



Number of Towns by Population Size - 2011

Less than 4999	5000-9999	10000-19999	20000-49999	50000-99999	100000 and Above	Total Town
0	0	0	1	0	0	1

Number of Towns by Population Size - 2011

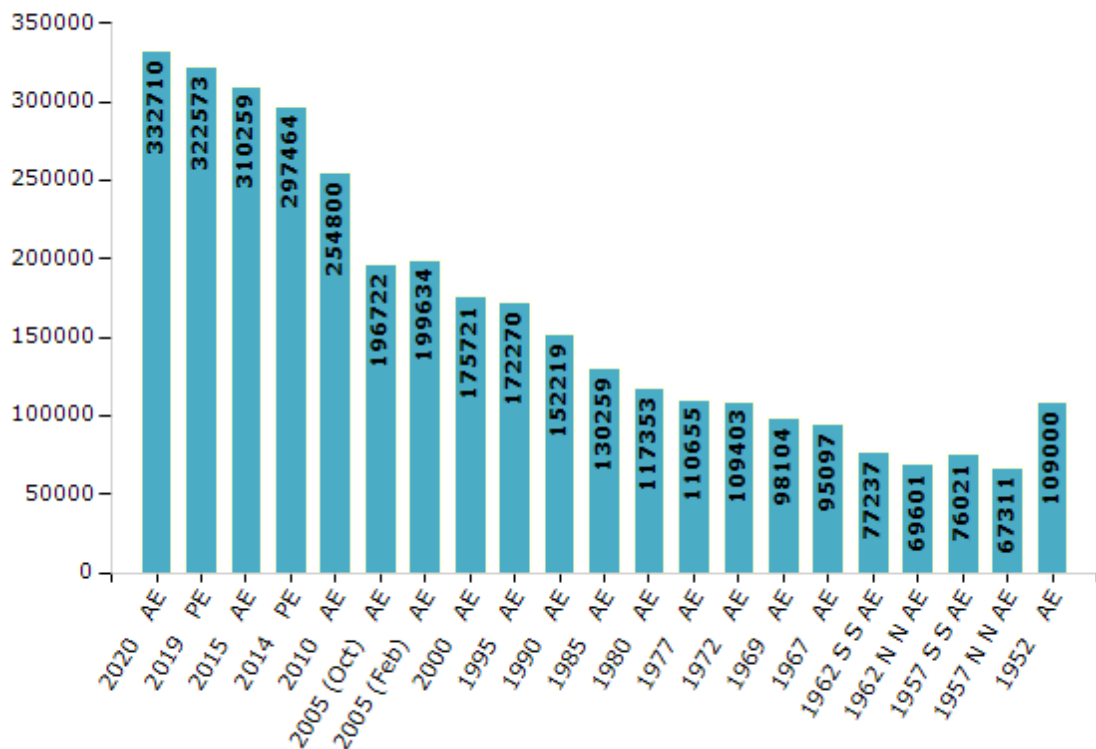


Electoral Features

Electors by Male & Female

Year	Male	Female	Others	Total	Year	Male	Female	Others	Total
2020 AE	177231	155463	16	332710	1990 AE	78971	73248	-	152219
2019 PE	173807	148761	5	322573	1985 AE	66274	63985	-	130259
2015 AE	167419	142835	5	310259	1980 AE	62014	55339	-	117353
2014 PE	160918	136542	4	297464	1977 AE	56427	54228	-	110655
2010 AE	138243	116557	0	254800	1972 AE	55790	53613	-	109403
2009 PE	-	-	-	-	1969 AE	51016	47088	-	98104
2005 (Oct) AE	118035	78687	-	196722	1967 AE	-	-	-	95097
2005 (Feb) AE	115857	83777	-	199634	1962 (S) AE	-	-	-	77237
2004 PE	-	-	-	-	1962 (N) AE	-	-	-	69601
2000 AE	105432	70289	-	175721	1957 (S) AE	-	-	-	76021
1999 PE	-	-	-	-	1957 (N) AE	-	-	-	67311
1995 AE	94158	78112	-	172270	1952 AE	-	-	-	109000

Number of Electors



Note : AE : Assembly Election, PE : Assembly Segment of Parliamentary Election

Historical Summary Election Results

Summary Result of Assembly Election - 2015

Candidate Name	Party	Votes	Votes %
Raj Kumar Sah	LJP	80842	45.91
Vijay Kumar Shukla	JD(U)	60549	34.39
Shailendra Kumar Kaushik	IND	8236	4.68
Ram Pravesh Pandit	IND	5264	2.99
Sanjeev Ranjan	IND	3596	2.04
Sudhir Kumar Singh	IND	2538	1.44
Indu Bhushan Singh	CPI	2382	1.35
Rajeev Kumar Choudhary	RVNP	1660	0.94
Anil Kumar	BMUP	1481	0.84
Manoj Kumar	IND	1400	0.8
Mahendra Ram	BSP	1358	0.77
Chandan Kumar Kushwaha	IND	1337	0.76
Suraj Kumar Singh	IND	955	0.54
Umesh Das Akantak	SAAFP	912	0.52
Ramashankar Sahni	SKLP	795	0.45
Bikiya Devi	GJNP	782	0.44
Kedarnath Prasad	SP	480	0.27
	NOTA	1515	0.86

Polling Station Level Election Results

Number and Name of Polling Stations (PS) (2020)

Number of Polling Stations	Name of Polling Stations	Number of Polling Stations	Name of Polling Stations
1	Prathmik Vidyalaya, Jafrabad (Purvi Bhag)	17	Utkramit Madhya Vidyalay Sahadullahpur (Uttari Bhag)
1A	Prathmik Vidyalaya, Jafrabad (Purvi Bhag)	18	Utkramit Madhya Vidyalay Sahadullahpur Anusuchit Jati
2	Prathmik Vidyalaya, Jafrabad (Pashchimi Bhag)	19	Utkramit Madhya Vidyalaya, Jaitipur Noor Nagar Paschim Bhag
3	Utkramit Madhya Vidyalay Vrindavan	19A	Utkramit Madhya Vidyalaya, Jaitipur Noor Nagar Paschim Bhag
4	Sarvjanik Bhawan Khanjahanchak Uttari Bhag Swast Upkendra Ke Nikat	20	Utkramit Madhya Vidyalay, Jaitipur Kanaya (Jawahar Rojgar Yojna Antargat Nirmit)
5	Sarvjanik Bhawan Khanjahanchak Purbi Bhag Swast Upkendra Ke Nikat	20A	Utkramit Madhya Vidyalay, Jaitipur Kanaya (Jawahar Rojgar Yojna Antargat Nirmit)
6	Utkramit Madhya Vidyalay Sarariya Uttari Bhag	21	Utkramit Madhya Vidyalay Rasulpur (Utari Bhag)
7	Utkramit Madhya Vidyalay Sarariya, Purbi Bhag,	22	Utkramit Madhya Vidyalay Rasulpur (Dakshni Bhag)
8	Utkramit Madhya Vidyalay Sarariya, Paschimi Bhag	23	Vesik School Vedauli (Paschimi Bhag)
9	Madhya Vidyalay, Khanjahanchak Paschimi Bhag	23A	Vesik School Vedauli (Paschimi Bhag)
9A	Madhya Vidyalay, Khanjahanchak Paschimi Bhag	24	Utkramit Madhya Vidyalay Kamalpur Urdu (Paschimi Bhag)
10	Panchayat Bhawan Usufpur, Paschimi Bhag	24A	Utkramit Madhya Vidyalay Kamalpur Urdu (Paschimi Bhag)
10A	Panchayat Bhawan Usufpur, Paschimi Bhag	25	Utkramit Madhya Vidyalaya, Kamalpur Urdu (Purvi Bhag)
11	Utkramit Madhya Vidyalay Keshavpur, Purvi Bhag	26	Rajkiya Prathmik Vidyalay Jalalpur Kanya (Uttari Bhag)
12	Utkramit Madhya Vidyalay Keshopur, Paschimi Bhag	27	Rajkiya Prathmik Vidyalay Jalalpur Kanya (Dakshni Bhag)
13	Utkramit Madhya Vidyalay Pirapur	28	Project Ucch Vidyalay Jalalpur (Dakshni Bhag)
14	Navsrijit Prathmik Vidyalaya Naya Etwarpur Nijamat Dakshin Bhag	29	Project Ucch Vidyalay Jalalpur (Uttri Bhag)
14A	Navsrijit Prathmik Vidyalaya Naya Etwarpur Nijamat Dakshin Bhag	30	Utkramit Madhya Vidyalay Balak Jalalpur (Paschimi Bhag)
15	Madhya Vidyalay Etwarpur Dakshin Bhag	31	Utkramit Madhya Vidyalay Balak Jalalpur (Dakshni Bhag Naya)
15A	Madhya Vidyalay Etwarpur Dakshin Bhag	31A	Utkramit Madhya Vidyalay Balak Jalalpur (Dakshni Bhag Naya)
16	Utkramit Madhya Vidyalay Sahadullahpur (Dakshni Bhag)	32	Praksthmik Vidyalay Salahpur (Uttri Bhag)

Contd....

Polling Station Level Election Results

Polling Station-wise Votes Secured by Overall Top Five Parties in Lalganj Assembly in Assembly Election (AE) under Hajipur Parliamentary Constituency in Bihar (2020)

Number of Polling Station	Winner - Sanjay Kumar Singh (BJP)	Runner-up - Rakesh Kumar (INC)	3rd - Vijay Kumar Shukla (IND)	4th - Raj Kumar Sah (LJP)	5th - Gauri Shankar Pandey (IND)	NOTA	Other	Total Votes Secured
27	106	76	262	5	12	4	36	501
28	119	88	158	6	15	5	94	485
29	100	225	130	8	17	5	41	526
30	99	93	99	21	7	10	153	482
31	102	13	143	2	3	0	27	290
31A	38	55	196	0	3	2	31	325
32	237	30	14	45	7	1	53	387
32A	200	38	25	12	1	0	32	308
33	227	18	21	12	2	0	32	312
33A	232	25	27	10	2	5	44	345
34	224	140	131	14	8	1	109	627
35	189	90	187	2	6	2	41	517
36	223	78	86	2	5	1	27	422
37	247	46	55	5	5	1	60	419
38	223	90	63	3	1	1	24	405
39	245	72	61	6	5	5	27	421
40	170	52	27	0	0	2	35	286
40A	215	81	42	0	2	3	33	376
41	161	13	27	11	0	2	19	233
41A	304	24	35	3	2	3	35	406
42	294	29	55	19	4	0	78	479
43	310	57	33	13	1	3	108	525
44	203	190	64	8	9	3	44	521
45	165	127	82	5	4	0	46	429
46	109	174	12	5	2	0	26	328
46A	186	120	25	4	0	1	24	360
47	249	98	176	9	4	1	29	566
48	127	123	28	4	5	1	31	319
48A	66	153	56	5	4	1	32	317
49	152	114	23	4	4	0	24	321
49A	225	99	10	2	0	1	44	381
50	227	191	38	5	7	0	31	499
51	332	107	59	7	3	1	50	559
52	363	45	26	9	8	2	148	601
53	310	105	45	13	7	6	92	578

Contd....

Polling Station Level Election Results

Winner, Runner-up and 3rd Party Position & Winning Margin According to Polling Stations in Lalganj Assembly in Assembly Election (AE) under Hajipur Parliamentary Constituency in Bihar (2020)

Polling Station Number	Winner Party	Winner Votes (%)	Runner-up Party	Runner-up Votes (%)	Winning Margin Votes (%)	Third Party	Third Party Votes (%)	Other Votes (%)
54	BJP	224 (40.95)	INC	210 (38.39)	14 (2.56)	IND (VKS)	33 (6.03)	80 (14.63)
55	INC	149 (33.86)	BJP	132 (30)	17 (3.86)	IND (VKS)	79 (17.95)	80 (18.18)
56	BJP	249 (54.01)	IND (VKS)	81 (17.57)	168 (36.44)	INC	43 (9.33)	88 (19.09)
57	IND (VKS)	195 (38.69)	BJP	173 (34.33)	22 (4.36)	INC	43 (8.53)	93 (18.45)
58	IND (VKS)	162 (37.76)	BJP	129 (30.07)	33 (7.69)	JAPL	63 (14.69)	75 (17.48)
59	BJP	267 (50.57)	JAPL	59 (11.17)	208 (39.4)	INC	58 (10.98)	144 (27.27)
60	BJP	297 (84.62)	IND (RK)	14 (3.99)	283 (80.63)	IND (RP)	5 (1.42)	35 (9.97)
60A	BJP	257 (71.19)	RLSP	37 (10.25)	220 (60.94)	INC	20 (5.54)	47 (13.02)
61	BJP	170 (52.15)	IND (VKS)	60 (18.4)	110 (33.75)	INC	20 (6.13)	76 (23.31)
61A	BJP	169 (46.17)	INC	110 (30.05)	59 (16.12)	IND (VKS)	26 (7.1)	61 (16.67)
62	BJP	155 (39.54)	INC	77 (19.64)	78 (19.9)	IND (RP)	44 (11.22)	116 (29.59)
62A	BJP	159 (41.73)	INC	62 (16.27)	97 (25.46)	IND (RP)	54 (14.17)	106 (27.82)
63	BJP	315 (60.46)	INC	83 (15.93)	232 (44.53)	IND (RP)	21 (4.03)	102 (19.58)
64	BJP	183 (38.77)	INC	132 (27.97)	51 (10.8)	IND (VKS)	29 (6.14)	128 (27.12)
65	BJP	233 (37.04)	INC	221 (35.14)	12 (1.9)	IND (VKS)	53 (8.43)	122 (19.4)
66	BJP	173 (51.49)	IND (RP)	42 (12.5)	131 (38.99)	INC	21 (6.25)	100 (29.76)
66A	BJP	214 (61.85)	INC	52 (15.03)	162 (46.82)	LJP	13 (3.76)	67 (19.36)
67	BJP	153 (37.97)	INC	126 (31.27)	27 (6.7)	LJP	57 (14.14)	67 (16.63)
67A	BJP	132 (40)	INC	109 (33.03)	23 (6.97)	LJP	25 (7.58)	64 (19.39)
68	INC	133 (38)	BJP	121 (34.57)	12 (3.43)	LJP	42 (12)	54 (15.43)
68A	BJP	131 (35.03)	LJP	85 (22.73)	46 (12.3)	INC	67 (17.91)	91 (24.33)
69	INC	196 (33.45)	BJP	188 (32.08)	8 (1.37)	IND (RP)	50 (8.53)	152 (25.94)
70	BJP	392 (72.86)	INC	55 (10.22)	337 (62.64)	IND (AK)	14 (2.6)	77 (14.31)
71	BJP	164 (32.48)	INC	125 (24.75)	39 (7.73)	IND (RP)	80 (15.84)	136 (26.93)
72	BJP	283 (68.36)	INC	44 (10.63)	239 (57.73)	IND (VKS)	23 (5.56)	64 (15.46)
73	BJP	335 (62.62)	IND (VKS)	48 (8.97)	287 (53.65)	INC	24 (4.49)	128 (23.93)
74	BJP	540 (83.72)	INC	68 (10.54)	472 (73.18)	LJP	6 (0.93)	31 (4.81)
75	BJP	199 (53.64)	LJP	43 (11.59)	156 (42.05)	IND (GSP)	40 (10.78)	89 (23.99)
75A	BJP	256 (70.52)	LJP	26 (7.16)	230 (63.36)	IND (GSP)	16 (4.41)	65 (17.91)
76	BJP	192 (49.87)	INC	91 (23.64)	101 (26.23)	IND (VKS)	9 (2.34)	93 (24.16)
76A	BJP	261 (71.51)	INC	66 (18.08)	195 (53.43)	IND (RK)	7 (1.92)	31 (8.49)
77	BJP	206 (56.13)	INC	80 (21.8)	126 (34.33)	IND (VKS)	22 (5.99)	59 (16.08)
77A	BJP	176 (45.83)	INC	145 (37.76)	31 (8.07)	LJP	14 (3.65)	49 (12.76)
78	BJP	157 (53.22)	INC	67 (22.71)	90 (30.51)	IND (VKS)	12 (4.07)	59 (20)
78A	INC	177 (58.61)	BJP	76 (25.17)	101 (33.44)	IND (VKS)	11 (3.64)	38 (12.58)

Contd....

Socio-Economic Amenities - Rural

Access to Education Facilities

Particulars	Number of Villages (% of Population)				
	Available	Not Available	If Not Available (Distance of Nearest Facility)		
			A	B	C
Govt. Primary School	174 (98)	17 (2)	17 (2)	0 (0)	0 (0)
Private Primary School	31 (20)	160 (80)	0 (0)	0 (0)	0 (0)
Govt. Middle School	118 (79)	73 (21)	56 (16)	16 (5)	0 (0)
Private Middle School	12 (5)	179 (95)	0 (0)	0 (0)	0 (0)
Govt. Secondary School	20 (19)	171 (81)	102 (48)	69 (33)	0 (0)
Private Secondary School	2 (1)	189 (99)	0 (0)	0 (0)	0 (0)
Govt. Senior Secondary School	6 (2)	185 (98)	57 (30)	95 (45)	10 (4)
Private Senior Secondary School	4 (7)	187 (93)	10 (6)	7 (3)	3 (4)
Govt. Arts and Science Degree College	3 (1)	188 (99)	43 (25)	116 (57)	18 (8)
Private Arts and Science Degree College	3 (3)	188 (97)	1 (0)	8 (6)	0 (0)
Govt. Engineering College	0 (0)	191 (100)	0 (0)	0 (0)	0 (0)
Private Engineering College	0 (0)	191 (100)	0 (0)	0 (0)	191 (100)
Govt. Medicine College	0 (0)	191 (100)	0 (0)	0 (0)	191 (100)
Private Medicine College	0 (0)	191 (100)	0 (0)	0 (0)	0 (0)
Govt. Management Institute	0 (0)	191 (100)	0 (0)	0 (0)	191 (100)
Private Management Institute	0 (0)	191 (100)	0 (0)	0 (0)	0 (0)
Govt. Polytechnic	0 (0)	191 (100)	27 (13)	66 (38)	98 (49)
Private Polytechnic	0 (0)	191 (100)	0 (0)	0 (0)	0 (0)
Govt. Vocational Training School/ITI	1 (1)	190 (99)	46 (26)	126 (65)	18 (8)
Private Vocational Training School/ITI	0 (0)	191 (100)	0 (0)	0 (0)	0 (0)
Govt. Non Formal Training Centre	1 (1)	190 (99)	46 (26)	119 (61)	14 (7)
Private Non Formal Training Centre	0 (0)	191 (100)	0 (0)	7 (4)	4 (2)
Govt. School For Disabled	0 (0)	191 (100)	0 (0)	0 (0)	191 (100)
Private School For Disabled	0 (0)	191 (100)	0 (0)	0 (0)	0 (0)
Government Others	0 (0)	191 (100)	1 (1)	1 (1)	5 (2)
Private Others	0 (0)	191 (100)	0 (0)	1 (1)	3 (1)

Note : Distance A : Less than 5 km; B : Between 5-10 km; C : 10+ km.; Source : Data Analysis is based on 2011 Census.

DISCLAIMER

The Terms of Use and Disclaimer of Datanet India Private Limited (hereinafter referred to as "Datanet") for use of this analysis report of **Lalganj Assembly Constituency (Lalganj Vidhan Sabha) :-**

1. **Assembly Factbook™** is a Registered Trade Mark owned by Datanet.
2. All the maps are sketched and graphical representation only and have not been drawn to the scale and also not to represent the actual geographical area or boundary of the unit.
3. The data for the aforesaid analysis is based on authentic sources and has been culled from the various publications of Census, CSO and NSSO for district and block level data, various central and state government departments, Central & State Elections Commissions and the concerned Returning Officers' releases, Electoral Rolls, Election results and allied publications, internal assessment, surveys, estimates and analysis. Therefore, certain adjustment of data at micro level may have been done to arrive closer to the macro data.
4. Data have been provided on an "As Is" and "As AVAILABLE" basis
5. The colours shown in the maps or diagram and charts of a particular party, alliance or AC are indicative and do not represent them.
6. This publication which includes maps, sheets, graphs and data would be the property under copyright of Datanet only. The user may use these for its internal study, analysis and research purposes. It's public display, re-selling or any commercial uses by the user are not allowed.
7. Datanet has taken due care and caution in compilation and processing of data and allied information, but does not guarantee the accuracy, adequacy or completeness of any information/analysis and will be not responsible for any errors or omissions or for the results obtained from the use of such information/analysis.
8. All the contents for the publication have been culled from various authentic sources and Datanet reasonably believes such sources to be reliable, but does not make any representations, express or implied as to the accuracy or fitness of use of such information. The information or contents of the information/analysis do not constitute advice and should not be relied upon in making (or refraining from making) any decision. Any reliance placed upon the information provided by Datanet is the sole responsibility and strictly at the user's risk.
9. In no event will Datanet be liable for any damages (including, without limitation, damages for loss of business projects, or loss of profits) arising in contract, tort or otherwise from the use of or inability to use any of its contents, or from any action taken (or refrained from being taken) as a result of using the analysis or any of its contents. Datanet its directors, owners, editors, officials, employees, distributor and agents or any associate will not be liable for any errors in the information contained or any consequences arising from the use of the contents of the provided information/analysis.
10. If any provision of these terms and conditions is held invalid or illegal or unenforceable for any reason by any court of competent jurisdiction, such provision shall be severed and the remainder of provisions of the terms and conditions shall continue in full force and effect as if the Term of Use had been executed with the invalid, illegal or unenforceable provision eliminated.
11. If there are any discrepancies in the information provided, please bring it to attention of Datanet for suitable rectification measures.

Buy Online This Complete Book At
Datanet India eBooks Store

www.indiastatpublications.com

or go directly at

[http://www.indiastatpublications.com/
Assembly_factbook/Bihar/Hajipur/Lalganj](http://www.indiastatpublications.com/Assembly_factbook/Bihar/Hajipur/Lalganj)

 **india**stat**elections**

ISBN: 978-93-5313-120-3



9 789353 131203