



Bihar

Assembly Factbook™

Raghopur Assembly Constituency



Key Electoral Data of Raghopur
Assembly Constituency (Vidhan Sabha)

Bihar

Assembly Factbook™

Raghopur Assembly Constituency



Raghopur Vidhan Sabha

Editor & Director

Dr. R.K. Thukral

Research Editor

Dr. Shafeeq Rahman

Compiled, Researched and Published by Datanet India Pvt. Ltd.

D-100, 1st Floor,

Okhla Industrial Area, Phase-I,
New Delhi- 110020.

Ph.: 91-11- 43580781-84

Email : support@indiastatpublications.com

Website : www.indiastatelections.com

Online Book Store :

www.indiastatpublications.com

Report No. : AFB/BR-128-0624

ISBN : 978-93-5313-166-1

First Edition : January, 2018

Seventh Updated Edition : June, 2024

Price : Rs. 11500/-

US\$ 310

© Datanet India Pvt. Ltd.

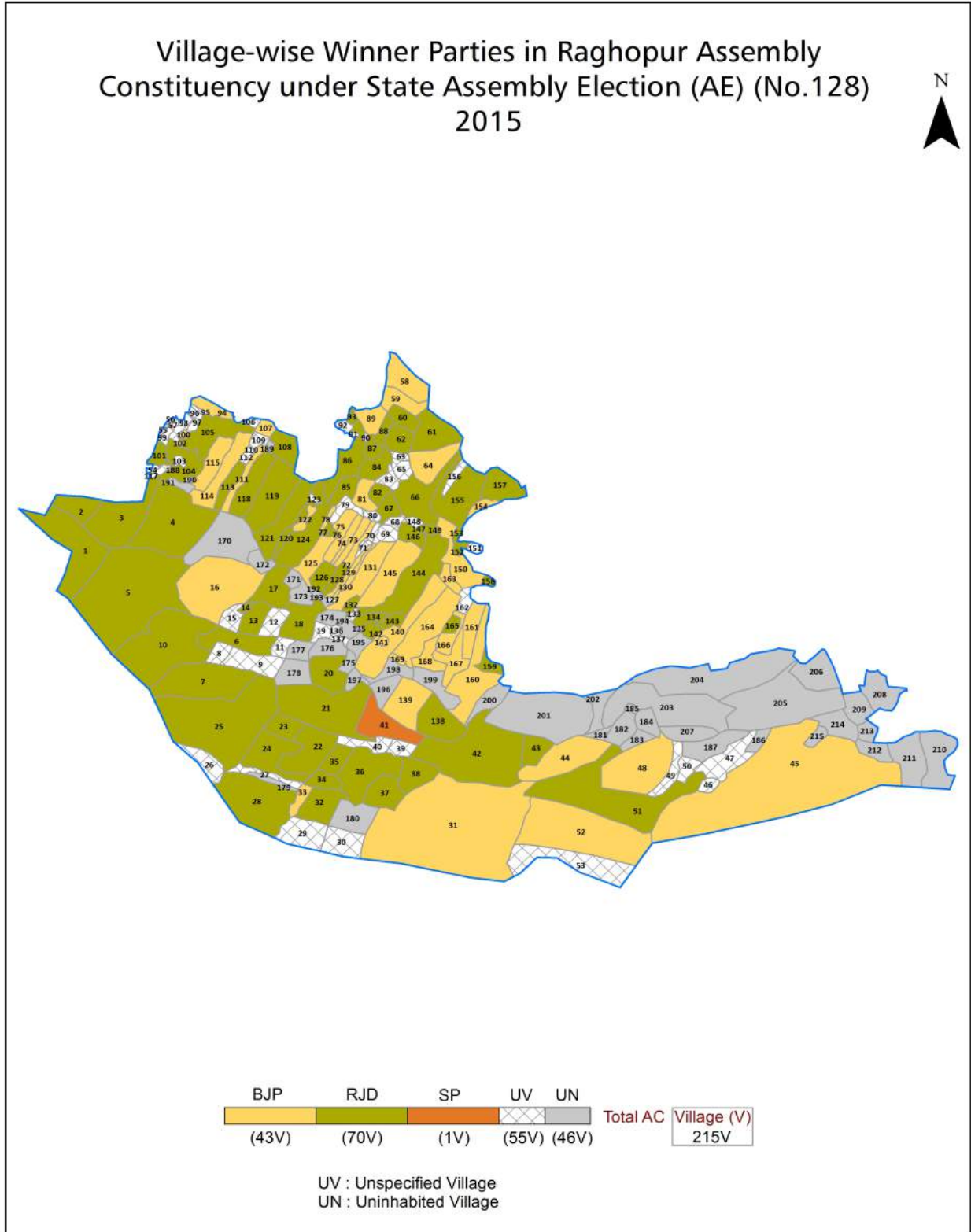
All rights reserved. No part of this book may be reproduced, stored in a retrieval system or transmitted in any form or by any means, mechanical photocopying, photographing, scanning, recording or otherwise without the prior written permission of the publisher. Please refer to Disclaimer at page no. 275 for the use of this publication.

Printed in India

Contents

No.	Particulars	Page No.
	Introduction	
1	Assembly Constituency - (Vidhan Sabha) at a Glance Features of Assembly as per Delimitation Commission of India (2008)	1-2
	Location and Political Maps	
2	Location Map Boundaries of Assembly Constituency - (Vidhan Sabha in District Boundaries of Assembly Constituency under Parliamentary Constituency - (Lok Sabha) Village-wise Winner Parties- 2024, 2020, 2019, 2015, 2014, 2010 and 2009	3-11
	Administrative Setup (2011)	
3	District Sub-district Towns Villages Inhabited Villages Uninhabited Villages Village Panchayat Intermediate Panchayat	12-21
	Demographics (2011)	
4	Population Households Rural/Urban Population Villages by Population Size Sex Ratio (Total & 0-6 Years) Religious Population Social Population Literacy Rate	22-23
	Electoral Features	
5	Important Dates of Last Elections Held Electors by Gender Service Electors Voters Voters Turnout Polling Stations & Average Number of Electors per Polling Station Electors by Age Group Present Elected Representatives	24-29
	Historical Summary Election Results	
6	Vote Share of Major Parties Winning Margin (Number & Percentage Polarity of Parties Summary Result of Assembly Segment of Parliamentary Elections 2024, 2019, 2014, 2009, 2004 and 1999 Summary Result of Assembly Elections 2020, 2015, 2010, 2005 (Oct), 2005 (Feb), 2000, 1995, 1990, 1985, 1980, 1977, 1972, 1969, 1967, 1962, 1957 and 1952	30-55
	Polling Station Level Election Results	
7	Name and Number of Polling Station 2024, 2020, 2019, 2015, 2014, 2010 and 2009 Polling Station-wise Electors, Voters & Voters Turnout 2024, 2020, 2019, 2015, 2014, 2010 and 2009 Polling Station wise Elections Results 2024, 2020, 2019, 2015, 2014, 2010 and 2009	56-255
	Share of Assembly Constituency	
8	Share of Assembly Constituency - (Vidhan Sabha) in State, District and Parliamentary Constituency - (Lok Sabha)	256
	Socio-Economic Amenities (2011)	
9	Access to Administrative Units Agricultural, Manufacturing and Industrial Commodities Demographic Indicators Education Health & Manpower Drinking Water Supply Sanitation Entertainment and Recreations Infrastructure Power Food Allocation Distribution and Marketing of Agriculture Commodities Infrastructure Transport and Road Infrastructure Communication Banking and Financial Services Land Use Irrigation Source	258-271
10	Abbreviation & Sources	272-274
11	Disclaimer	275

Location & Political Map



Administrative Setup

List of Village Panchayat & Intermediate Panchayat (Block) Name - 2011

Village Name	Village Panchayat Name	Intermediate Panchayat Name
Alampur Kusiari	Majhauri	Bidupur
Amer	Amer	Bidupur
Arazi Bhairopur	Mayil	Bidupur
Arazi Chak Kanchanpur	Kanchanpur	Bidupur
Arazi Kanchanpur	Saidpur Ganesh	Bidupur
Arazi Kanchanpur	Saidpur Ganesh	Bidupur
Arazi Shampur	Nawanagar	Bidupur
Ashpatpur Singhia urf Latiahi	Saraepur	Raghopur
Az Rakbe Chaklatif	Saidpur Ganesh	Bidupur
Bagh Said Khan	Chechar	Bidupur
Bahrampur	Bahrampur	Raghopur
Bala Tanr	Chakathkursi Kushiari	Bidupur
Basantpur Kakrahta Urf Milki	Nawanagar	Bidupur
Bazidpur Malahi	Rahimapur	Bidupur
Bazidpur Saidat Majhlopur	Bazidpur Saidat	Bidupur
Bhairopur	Rajasan	Bidupur
Bhawani Prasad urf Madho	Bahrampur	Raghopur
Bibharpur	Nawanagar	Bidupur
Biddupur	Biddupur	Bidupur
Birpur	Birpur	Raghopur
Bishanpur Kakrahta	Sahdullahpur Dhabauli	Bidupur
Bishunpur Kishun Das Majlishpur	Majalispur	Bidupur
Bishunpur Lala Chak Urf Lalua	Majhauri	Bidupur
Bishunpur Paltu	Majhauri	Bidupur
Bishunpur Rajkhan	Amer	Bidupur
Bishunpur Said Ali	Judabanpur	Bidupur
Bulan Sarae	Shitalpur Kalyanpur	Bidupur
Chak Bihari	Khanpur Pakri	Bidupur
Chak Chand	Chak Singar	Raghopur

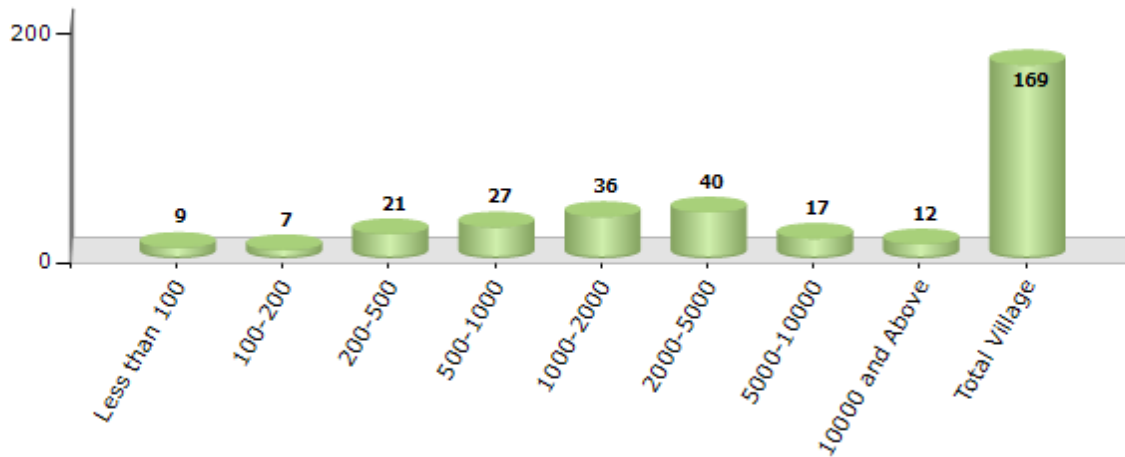
Contd....

Demographics

Number of Villages by Population Size - 2011

Less than 100	100-200	200-500	500-1000	1000-2000	2000-5000	5000-10000	10000 and Above	Total Village
9	7	21	27	36	40	17	12	169

Number of Villages by Population Size - 2011

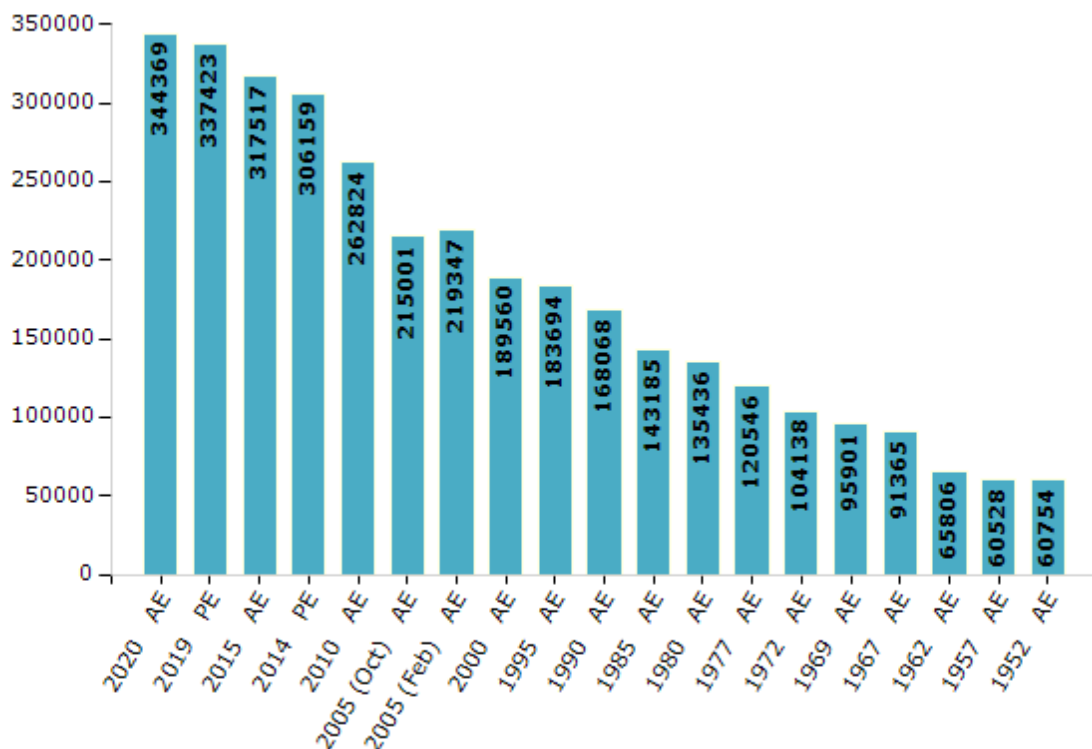


Electoral Features

Electors by Male & Female

Year	Male	Female	Others	Total	Year	Male	Female	Others	Total
2020 AE	185106	159258	5	344369	1995 AE	100479	83215	-	183694
2019 PE	183618	153801	4	337423	1990 AE	88674	79394	-	168068
2015 AE	173476	144040	1	317517	1985 AE	73633	69552	-	143185
2014 PE	167479	138679	1	306159	1980 AE	70959	64477	-	135436
2010 AE	144749	118075	0	262824	1977 AE	61629	58917	-	120546
2009 PE	-	-	-	-	1972 AE	54278	49860	-	104138
2005 (Oct) AE	129005	85996	-	215001	1969 AE	51789	44112	-	95901
2005 (Feb) AE	127696	91651	-	219347	1967 AE	-	-	-	91365
2004 PE	-	-	-	-	1962 AE	-	-	-	65806
2000 AE	113777	75783	-	189560	1957 AE	-	-	-	60528
1999 PE	-	-	-	-	1952 AE	-	-	-	60754

Number of Electors



Note : AE : Assembly Election, PE : Assembly Segment of Parliamentary Election

Historical Summary Election Results

Summary Result of Assembly Election - 2015

Candidate Name	Party	Votes	Votes %
Tejashwi Prasad Yadav	RJD	91236	49.15
Satish Kumar	BJP	68503	36.9
Rakesh Raushan	SP	5220	2.81
Rizwanul Azam	JDR	4800	2.59
Rambabu Bhagat	CPI(ML)(L)	2538	1.37
Arun Ray	IND	2381	1.28
Om Prakash Singh	IND	1373	0.74
Suresh Yadav	BSP	1213	0.65
Rajesh Raushan	AAHPty	992	0.53
Satish Kumar Singh	IND	962	0.52
Kumar Sameer Raja Yadav	JAPL	936	0.5
Ram Sawroop Ray	NJPI	843	0.45
Anil Singh	SHS	709	0.38
Umesh Mahto	SKLP	642	0.35
Meghnath Paswan	IND	641	0.35
Govind Pandit	prrp	400	0.22
Akhilesh Kumar	GaAP	378	0.2
Param Hans Singh	ABHM	343	0.18
Durga Devi	KVD	330	0.18
Yugeshwar Chaurasia	RSMD	285	0.15
	NOTA	903	0.49

Polling Station Level Election Results

Number and Name of Polling Stations (PS) (2020)

Number of Polling Stations	Name of Polling Stations	Number of Polling Stations	Name of Polling Stations
1	Utkramit Madhya Vidyalay ,Chandpura Kanya (Utari Bhag) Kamra No.1	15	Utkramit Madhay Vidhaly Rahimapur (Purvi Bhag) Kamra No-7
2	Utkramit Madhya Vidyalay ,Chondpura Kayna (Dakshini Bhag) Kamra No.2	15A	Utkramit Madhay Vidhaly Rahimapur (Purvi Bhag) Kamra No-7
3	Madhya Vidhyalay Panapur Dharpur(Purvi Bhag) Kamra No.-1	16	Utkramit Madhya Vidyalay ,Kanchanpur ,Uttari Bhag Kamra No-1
4	Madhya Vidhyalay Panapur Dharpur(Pashchimi Bhag) Kamra No.-2	17	Utkramit Madhya Vidyalay ,Kanchanpur, Dakshini Bhag Kamra No 3
5	Janta High School Panapur Dharpur(Purvi Bhag) Kamra No.-1	17A	Utkramit Madhya Vidyalay ,Kanchanpur, Dakshini Bhag Kamra No 3
5A	Janta High School Panapur Dharpur(Purvi Bhag) Kamra No.-1	18	Utkramit Madhya Vidyalay ,Kanchanpur, Madhya Bhag Kamra No-4
6	Janta High School Panapur Dharpur(Paschimi Bhag) Kamra No.-2	18A	Utkramit Madhya Vidyalay ,Kanchanpur, Madhya Bhag Kamra No-4
6A	Janta High School Panapur Dharpur(Paschimi Bhag) Kamra No.-2	19	Aganvadi Kendra Ward No-14 Kanchanpur
7	Utkramit Madhya Vidyalay Saidpur Ganesh (Utari Bhag) Kamara No.-1	19A	Aganvadi Kendra Ward No-14 Kanchanpur
7A	Utkramit Madhya Vidyalay Saidpur Ganesh (Utari Bhag) Kamara No.-1	20	Samudayik Vikas Bhawan,Kanchanpur,Purwi Bhag
8	Utkramit Madhya Vidyalay Saidpur Ganesh (Dakshini Bhag) Kamara No.-2	20A	Samudayik Vikas Bhawan,Kanchanpur,Purwi Bhag
8A	Utkramit Madhya Vidyalay Saidpur Ganesh (Dakshini Bhag) Kamara No.-2	21	Samudayik Vikas Bhawan,Kanchanpur,Paschimi Bhag
9	Utkramit Madhya Vidyalay Ismailpur Kamra No.-1	22	Utkramit Madhya Vidyalay, Mohanpur Issar Kamra No- 1
10	Madhya Vidhalay Eraji Wajitpur Malahi (Utari Bhag) Kamra No.-1	23	Madhya Vidyalay ,Pakauli,Purbi Bhag Kamra No- 1
10A	Madhya Vidhalay Eraji Wajitpur Malahi (Utari Bhag) Kamra No.-1	23A	Madhya Vidyalay ,Pakauli,Purbi Bhag Kamra No- 1
11	Utkramit Madhya Vidyalay, Rahimapur Uttari Bahg	24	Madhya Vidyalay,Pakauli ,Pashchimi Bhag Kamra No -2
11A	Utkramit Madhya Vidyalay, Rahimapur Uttari Bahg	24A	Madhya Vidyalay,Pakauli ,Pashchimi Bhag Kamra No -2
12	Utkramit Madhya Vidyalay, Rahimapur ,Pethiya Paschimi Bhag	25	Prathamik Vidyalay, Rajasan,Uttari Bhag Kamra No-1
13	Utkramit Madhya Vidyalay ,Rahimapur ,Paschimi Bhag	25A	Prathamik Vidyalay, Rajasan,Uttari Bhag Kamra No-1
14	Utkramit Madhay Vidhaly Rahimapur (Utari Bhag) Kamra No-4	26	Prathamik Vidyalay,Rajasan,Dakshini Bhag Kamra No -2
14A	Utkramit Madhay Vidhaly Rahimapur (Utari Bhag) Kamra No-4	26A	Prathamik Vidyalay,Rajasan,Dakshini Bhag Kamra No -2

Contd....

Polling Station Level Election Results

Polling Station-wise Votes Secured by Overall Top Five Parties in Raghopur Assembly in Assembly Election (AE) under Hajipur Parliamentary Constituency in Bihar (2020)

Number of Polling Station	Winner - Tejashwi Prasad Yadav (RJD)	Runner-up - Satish Kumar (BJP)	3rd - Rakesh Raushan (LJP)	4th - Rajeshwar Ray (IND)	5th - Kumar Sameer Raja Yadav (JAPL)	NOTA	Other	Total Votes Secured
23A	23	83	251	2	1	2	5	367
24	12	85	244	6	0	5	5	357
24A	9	120	215	13	1	5	13	376
25	101	66	176	10	5	5	23	386
25A	119	147	91	4	8	3	11	383
26	362	48	12	0	5	20	14	461
26A	195	128	41	0	13	2	5	384
27	104	220	164	8	2	7	9	514
28	130	148	162	13	4	14	51	522
29	74	61	224	8	8	6	18	399
29A	193	60	107	0	8	5	6	379
30	321	55	88	4	3	4	8	483
31	130	144	32	3	1	3	2	315
32	37	229	37	15	4	10	20	352
32A	60	172	30	9	0	4	8	283
33	46	254	15	9	1	3	12	340
34	310	131	107	17	2	20	29	616
35	257	101	7	3	2	11	13	394
36	87	258	18	6	0	4	13	386
36A	61	119	162	10	1	11	25	389
37	92	176	73	9	4	7	15	376
37A	205	195	31	3	7	5	12	458
38	103	159	6	5	4	7	9	293
38A	86	154	19	3	5	1	2	270
39	360	204	22	8	9	12	8	623
40	214	82	4	4	3	4	2	313
40A	71	189	6	2	8	3	6	285
41	96	189	73	9	5	10	18	400
41A	124	143	38	3	7	6	3	324
42	183	241	100	6	41	10	22	603
43	299	193	27	5	26	14	19	583
44	40	86	227	11	27	12	28	431
45	93	124	12	11	37	11	17	305
45A	164	84	3	7	28	4	13	303
46	289	67	186	16	2	9	28	597

Contd....

Polling Station Level Election Results

Winner, Runner-up and 3rd Party Position & Winning Margin According to Polling Stations in Raghopur Assembly in Assembly Election (AE) under Hajipur Parliamentary Constituency in Bihar (2020)

Polling Station Number	Winner Party	Winner Votes (%)	Runner-up Party	Runner-up Votes (%)	Winning Margin Votes (%)	Third Party	Third Party Votes (%)	Other Votes (%)
47	LJP	187 (35.96)	BJP	171 (32.88)	16 (3.08)	RJD	63 (12.12)	99 (19.04)
48	RJD	241 (55.53)	BJP	102 (23.5)	139 (32.03)	JAPL	55 (12.67)	36 (8.29)
49	RJD	343 (69.43)	JAPL	77 (15.59)	266 (53.84)	BJP	58 (11.74)	16 (3.24)
50	JAPL	147 (40.61)	LJP	127 (35.08)	20 (5.53)	BJP	45 (12.43)	43 (11.88)
50A	JAPL	223 (65.4)	BJP	41 (12.02)	182 (53.38)	RJD	32 (9.38)	45 (13.2)
51	RJD	216 (56.54)	JAPL	78 (20.42)	138 (36.12)	BJP	47 (12.3)	41 (10.73)
51A	RJD	241 (54.4)	JAPL	98 (22.12)	143 (32.28)	BJP	55 (12.42)	49 (11.06)
52	RJD	192 (54.55)	BJP	70 (19.89)	122 (34.66)	JAPL	53 (15.06)	37 (10.51)
52A	BJP	157 (50.65)	JAPL	81 (26.13)	76 (24.52)	RJD	53 (17.1)	19 (6.13)
53	BJP	195 (46.1)	RJD	128 (30.26)	67 (15.84)	JAPL	60 (14.18)	40 (9.46)
54	RJD	258 (59.45)	BJP	79 (18.2)	179 (41.25)	LJP	34 (7.83)	63 (14.52)
55	BJP	200 (54.35)	RJD	98 (26.63)	102 (27.72)	LJP	26 (7.07)	44 (11.96)
56	RJD	511 (90.28)	BJP	27 (4.77)	484 (85.51)	IND (RSR)	3 (0.53)	25 (4.42)
57	RJD	392 (87.11)	BJP	24 (5.33)	368 (81.78)	LJP	7 (1.56)	27 (6)
58	RJD	332 (75.8)	BJP	58 (13.24)	274 (62.56)	LJP	12 (2.74)	36 (8.22)
58A	RJD	248 (64.92)	BJP	101 (26.44)	147 (38.48)	IND (RK)	10 (2.62)	23 (6.02)
59	RJD	279 (66.11)	BJP	115 (27.25)	164 (38.86)	IND (RSR)	4 (0.95)	24 (5.69)
59A	RJD	364 (89.66)	BJP	23 (5.67)	341 (83.99)	IND (RK)	4 (0.99)	15 (3.69)
60	BJP	134 (56.07)	RJD	82 (34.31)	52 (21.76)	LJP	6 (2.51)	17 (7.11)
60A	RJD	175 (52.4)	BJP	108 (32.34)	67 (20.06)	LJP	19 (5.69)	32 (9.58)
61	BJP	207 (58.64)	RJD	87 (24.65)	120 (33.99)	IND (RR)	15 (4.25)	44 (12.46)
61A	BJP	201 (47.18)	LJP	143 (33.57)	58 (13.61)	RJD	37 (8.69)	45 (10.56)
62	BJP	178 (51.15)	LJP	93 (26.72)	85 (24.43)	RJD	31 (8.91)	46 (13.22)
62A	BJP	149 (41.27)	RJD	115 (31.86)	34 (9.41)	LJP	39 (10.8)	58 (16.07)
63	RJD	273 (57.84)	BJP	151 (31.99)	122 (25.85)	LJP	14 (2.97)	34 (7.2)
64	RJD	280 (61.81)	BJP	141 (31.13)	139 (30.68)	LJP	8 (1.77)	24 (5.3)
65	RJD	286 (75.86)	LJP	50 (13.26)	236 (62.6)	BJP	21 (5.57)	20 (5.31)
65A	RJD	358 (93.96)	LJP	6 (1.57)	352 (92.39)	BJP	5 (1.31)	12 (3.15)
66	RJD	376 (73.87)	BJP	77 (15.13)	299 (58.74)	JAPL	38 (7.47)	18 (3.54)
67	RJD	361 (80.04)	LJP	39 (8.65)	322 (71.39)	BJP	27 (5.99)	24 (5.32)
68	RJD	351 (78)	LJP	67 (14.89)	284 (63.11)	BJP	12 (2.67)	20 (4.44)
68A	BJP	254 (64.96)	LJP	64 (16.37)	190 (48.59)	RJD	59 (15.09)	14 (3.58)
69	RJD	335 (69.5)	BJP	82 (17.01)	253 (52.49)	LJP	36 (7.47)	29 (6.02)
70	LJP	144 (35.21)	BJP	129 (31.54)	15 (3.67)	RJD	104 (25.43)	32 (7.82)
71	RJD	198 (54.1)	BJP	121 (33.06)	77 (21.04)	LJP	26 (7.1)	21 (5.74)

Contd....

Socio-Economic Amenities - Rural

Access to Education Facilities

Particulars	Number of Villages (% of Population)				
	Available	Not Available	If Not Available (Distance of Nearest Facility)		
			A	B	C
Govt. Primary School	136 (96)	33 (4)	20 (2)	8 (1)	0 (0)
Private Primary School	47 (39)	122 (61)	0 (0)	0 (0)	0 (0)
Govt. Middle School	90 (81)	79 (19)	61 (12)	16 (4)	0 (0)
Private Middle School	14 (15)	155 (85)	0 (0)	0 (0)	0 (0)
Govt. Secondary School	14 (25)	155 (75)	105 (45)	39 (24)	7 (2)
Private Secondary School	5 (8)	164 (92)	0 (0)	0 (0)	0 (0)
Govt. Senior Secondary School	3 (3)	166 (97)	54 (29)	73 (44)	21 (13)
Private Senior Secondary School	1 (0)	168 (100)	6 (5)	11 (6)	0 (0)
Govt. Arts and Science Degree College	2 (2)	167 (98)	5 (1)	63 (35)	96 (60)
Private Arts and Science Degree College	1 (0)	168 (100)	0 (0)	2 (2)	0 (0)
Govt. Engineering College	0 (0)	169 (100)	0 (0)	0 (0)	0 (0)
Private Engineering College	0 (0)	169 (100)	0 (0)	0 (0)	169 (100)
Govt. Medicine College	0 (0)	169 (100)	0 (0)	0 (0)	169 (100)
Private Medicine College	0 (0)	169 (100)	0 (0)	0 (0)	0 (0)
Govt. Management Institute	0 (0)	169 (100)	0 (0)	0 (0)	169 (100)
Private Management Institute	0 (0)	169 (100)	0 (0)	0 (0)	0 (0)
Govt. Polytechnic	1 (2)	168 (98)	8 (8)	57 (35)	103 (55)
Private Polytechnic	0 (0)	169 (100)	0 (0)	0 (0)	0 (0)
Govt. Vocational Training School/ITI	2 (7)	167 (93)	49 (31)	98 (47)	20 (15)
Private Vocational Training School/ITI	1 (5)	168 (95)	0 (0)	0 (0)	0 (0)
Govt. Non Formal Training Centre	2 (7)	167 (93)	0 (0)	0 (0)	0 (0)
Private Non Formal Training Centre	0 (0)	169 (100)	49 (31)	98 (47)	20 (15)
Govt. School For Disabled	0 (0)	169 (100)	0 (0)	0 (0)	169 (100)
Private School For Disabled	0 (0)	169 (100)	0 (0)	0 (0)	0 (0)
Government Others	0 (0)	169 (100)	3 (1)	7 (3)	18 (17)
Private Others	1 (0)	168 (100)	0 (0)	1 (0)	1 (1)

Note : Distance A : Less than 5 km; B : Between 5-10 km; C : 10+ km.; Source : Data Analysis is based on 2011 Census.

DISCLAIMER

The Terms of Use and Disclaimer of Datanet India Private Limited (hereinafter referred to as "Datanet") for use of this analysis report of **Raghopur Assembly Constituency (Raghopur Vidhan Sabha) :-**

1. **Assembly Factbook™** is a Registered Trade Mark owned by Datanet.
2. All the maps are sketched and graphical representation only and have not been drawn to the scale and also not to represent the actual geographical area or boundary of the unit.
3. The data for the aforesaid analysis is based on authentic sources and has been culled from the various publications of Census, CSO and NSSO for district and block level data, various central and state government departments, Central & State Elections Commissions and the concerned Returning Officers' releases, Electoral Rolls, Election results and allied publications, internal assessment, surveys, estimates and analysis. Therefore, certain adjustment of data at micro level may have been done to arrive closer to the macro data.
4. Data have been provided on an "As Is" and "As AVAILABLE" basis
5. The colours shown in the maps or diagram and charts of a particular party, alliance or AC are indicative and do not represent them.
6. This publication which includes maps, sheets, graphs and data would be the property under copyright of Datanet only. The user may use these for its internal study, analysis and research purposes. It's public display, re-selling or any commercial uses by the user are not allowed.
7. Datanet has taken due care and caution in compilation and processing of data and allied information, but does not guarantee the accuracy, adequacy or completeness of any information/analysis and will be not responsible for any errors or omissions or for the results obtained from the use of such information/analysis.
8. All the contents for the publication have been culled from various authentic sources and Datanet reasonably believes such sources to be reliable, but does not make any representations, express or implied as to the accuracy or fitness of use of such information. The information or contents of the information/analysis do not constitute advice and should not be relied upon in making (or refraining from making) any decision. Any reliance placed upon the information provided by Datanet is the sole responsibility and strictly at the user's risk.
9. In no event will Datanet be liable for any damages (including, without limitation, damages for loss of business projects, or loss of profits) arising in contract, tort or otherwise from the use of or inability to use any of its contents, or from any action taken (or refrained from being taken) as a result of using the analysis or any of its contents. Datanet its directors, owners, editors, officials, employees, distributor and agents or any associate will not be liable for any errors in the information contained or any consequences arising from the use of the contents of the provided information/analysis.
10. If any provision of these terms and conditions is held invalid or illegal or unenforceable for any reason by any court of competent jurisdiction, such provision shall be severed and the remainder of provisions of the terms and conditions shall continue in full force and effect as if the Term of Use had been executed with the invalid, illegal or unenforceable provision eliminated.
11. If there are any discrepancies in the information provided, please bring it to attention of Datanet for suitable rectification measures.

**Buy Online This Complete Book At
Datanet India eBooks Store**

www.indiastatpublications.com

or go directly at

**[http://www.indiastatpublications.com/
Assembly_factbook/Bihar/Hajipur/ Raghopur](http://www.indiastatpublications.com/Assembly_factbook/Bihar/Hajipur/Raghopur)**

 **india**stat**elections**

ISBN : 978-93-5313-166-1



9 789353 131661