



Bihar

Assembly Factbook™

Makhdumpur Assembly Constituency



Key Electoral Data of Makhdumpur
Assembly Constituency (Vidhan Sabha)

Bihar

Assembly Factbook™

Makhdumpur Assembly Constituency



Makhdumpur Vidhan Sabha

Editor & Director

Dr. R.K. Thukral

Research Editor

Dr. Shafeeq Rahman

Compiled, Researched and Published by Datanet India Pvt. Ltd.

D-100, 1st Floor,

Okhla Industrial Area, Phase-I,
New Delhi- 110020.

Ph.: 91-11- 43580781-84

Email : support@indiastatpublications.com

Website : www.indiastatelections.com

Online Book Store :

www.indiastatpublications.com

Report No. : AFB/BR-218-0125

ISBN : 978-93-5313-130-2

First Edition : January, 2018

Eighth Updated Edition : January, 2025

Price : Rs. 11500/-

US\$ 310

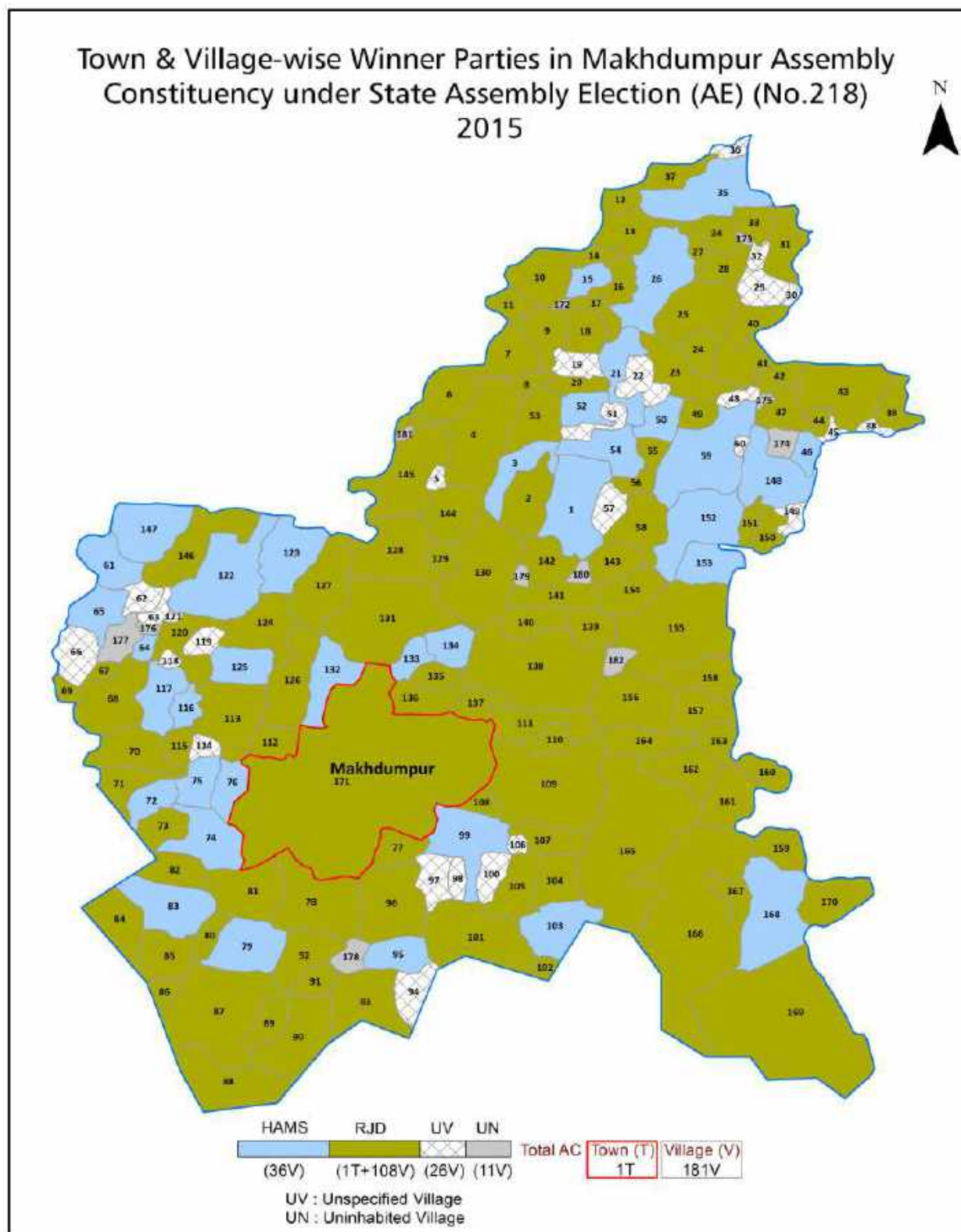
© Datanet India Pvt. Ltd.

All rights reserved. No part of this book may be reproduced, stored in a retrieval system or transmitted in any form or by any means, mechanical photocopying, photographing, scanning, recording or otherwise without the prior written permission of the publisher. Please refer to Disclaimer at page no. 237 for the use of this publication.

Printed in India

No.	Particulars	Page No.
	Introduction	
1	Assembly Constituency - (Vidhan Sabha) at a Glance Features of Assembly as per Delimitation Commission of India (2008)	1-2
	Location and Political Maps	
2	Location Map Boundaries of Assembly Constituency - (Vidhan Sabha) in District Boundaries of Assembly Constituency under Parliamentary Constituency - (Lok Sabha) Town & Village-wise Winner Parties- 2024, 2020, 2019, 2015, 2014, 2010 and 2009	3-11
	Administrative Setup (2011)	
3	District Sub-district Towns Villages Inhabited Villages Uninhabited Villages Village Panchayat Intermediate Panchayat	12-21
	Demographics (2011)	
4	Population Households Rural/Urban Population Towns and Villages by Population Size Sex Ratio (Total & 0-6 Years) Religious Population Social Population Literacy Rate	22-23
	Electoral Features	
5	Important Dates of Last Elections Held Electors by Gender Service Electors Voters Voters Turnout Polling Stations & Average Number of Electors per Polling Station Electors by Age Group Present Elected Representatives	24-29
	Historical Summary Election Results	
6	Vote Share of Major Parties Winning Margin (Number & Percentage) Polarity of Parties Summary Result of Assembly Segment of Parliamentary Elections 2024, 2019, 2014, 2009, 2004 and 1999 Summary Result of Assembly Elections 2020, 2015, 2010, 2005 (Oct), 2005 (Feb), 2000, 1995, 1990, 1985, 1980, 1977, 1972, 1969, 1967, 1962, 1957 and 1952	30-56
	Polling Station Level Election Results	
7	Name and Number of Polling Station 2024, 2020, 2019, 2015, 2014, 2010 and 2009 Polling Station-wise Electors, Voters & Voters Turnout 2024, 2020, 2019, 2015, 2014, 2010 and 2009 Polling Station wise Elections Results 2024, 2020, 2019, 2015, 2014, 2010 and 2009	57-216
	Share of Assembly Constituency	
8	Share of Assembly Constituency - (Vidhan Sabha) in State, District and Parliamentary Constituency - (Lok Sabha)	217
	Socio-Economic Amenities (2011)	
9	Access to Administrative Units Agricultural, Manufacturing and Industrial Commodities Demographic Indicators Education Health & Manpower Drinking Water Supply Sanitation Entertainment and Recreations Infrastructure Power Food Allocation Distribution and Marketing of Agriculture Commodities Infrastructure Transport and Road Infrastructure Communication Banking and Financial Services Land Use Irrigation Source	219-233
10	Abbreviation & Sources	234-236
11	Disclaimer	237

Location & Political Map



Administrative Setup

List of Village Panchayat & Intermediate Panchayat (Block) Name - 2011

Village Name	Village Panchayat Name	Intermediate Panchayat Name
Akauna	Makarpur	Makhdumpur
Allahganj	Bhaikh	Makhdumpur
Amarpur	Solhanda	Makhdumpur
Amsara	Dharaut	Makhdumpur
Amthua	Amthua	Kako
Ankumpur	Jagpura	Makhdumpur
Asiawan	Nertua	Kako
Bandea	Solhanda	Makhdumpur
Bara	Pinjora	Kako
Bara	Barhauna	Kako
Barhauna	Barhauna	Kako
Basantpur Harahar	Pinjora	Kako
Bela	Bela Weera	Makhdumpur
Berka	Dharnai	Makhdumpur
Berthu	Malathi	Makhdumpur
Bhadseri	Barhauna	Kako
Bharthua	Derhsaiya	Kako
Bhekh	Bhaikh	Makhdumpur
Bhelawar	Barhauna	Kako
Bhikhanpur	Damuhan	Kako
Bhimpura	Manjhos	Makhdumpur
Birra	Bela Weera	Makhdumpur
Bishunganj	Jamanganj	Makhdumpur
Bisunpur Pathra	Punhada	Makhdumpur
Boknari Kalan	Solhanda	Makhdumpur
Boknari Khurd	Solhanda	Makhdumpur
Chalis kurwa	Chariyari	Makhdumpur
Chandai	Chariyari	Makhdumpur
Chandaura	Mainawan	Kako

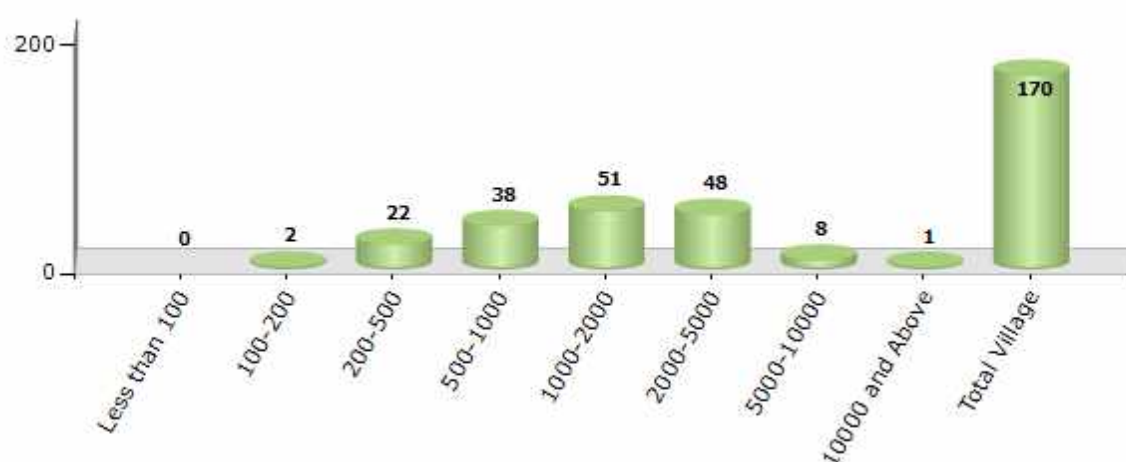
Contd....

Demographics

Number of Villages by Population Size - 2011

Less than 100	100-200	200-500	500-1000	1000-2000	2000-5000	5000-10000	10000 and Above	Total Village
0	2	22	38	51	48	8	1	170

Number of Villages by Population Size - 2011



Number of Towns by Population Size - 2011

Less than 4999	5000-9999	10000-19999	20000-49999	50000-99999	100000 and Above	Total Town
0	0	0	1	0	0	1

Number of Towns by Population Size - 2011

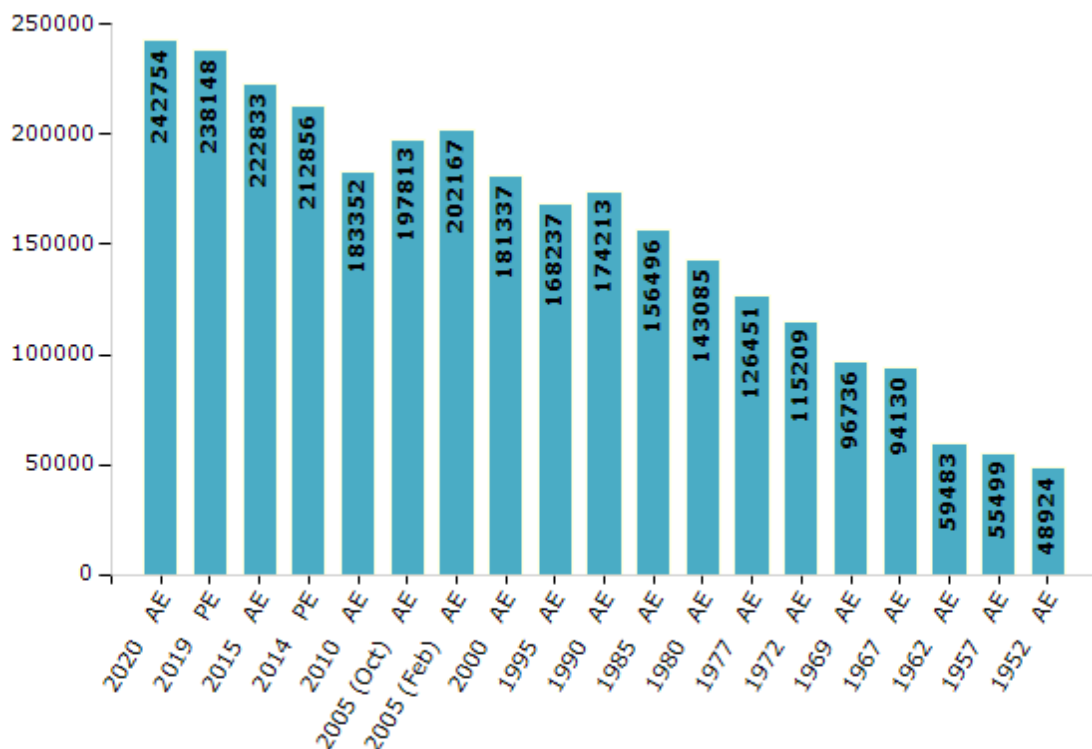


Electoral Features

Electors by Male & Female

Year	Male	Female	Others	Total	Year	Male	Female	Others	Total
2020 AE	127704	115045	5	242754	1995 AE	86518	81719	-	168237
2019 PE	125404	112741	3	238148	1990 AE	96579	77634	-	174213
2015 AE	118270	104560	3	222833	1985 AE	86130	70366	-	156496
2014 PE	113129	99724	3	212856	1980 AE	77123	65962	-	143085
2010 AE	98722	84630	0	183352	1977 AE	68420	58031	-	126451
2009 PE	-	-	-	-	1972 AE	62806	52403	-	115209
2005 (Oct) AE	104564	93249	-	197813	1969 AE	50240	46496	-	96736
2005 (Feb) AE	106465	95702	-	202167	1967 AE	-	-	-	94130
2004 PE	-	-	-	-	1962 AE	-	-	-	59483
2000 AE	94303	87034	-	181337	1957 AE	-	-	-	55499
1999 PE	-	-	-	-	1952 AE	-	-	-	48924

Number of Electors



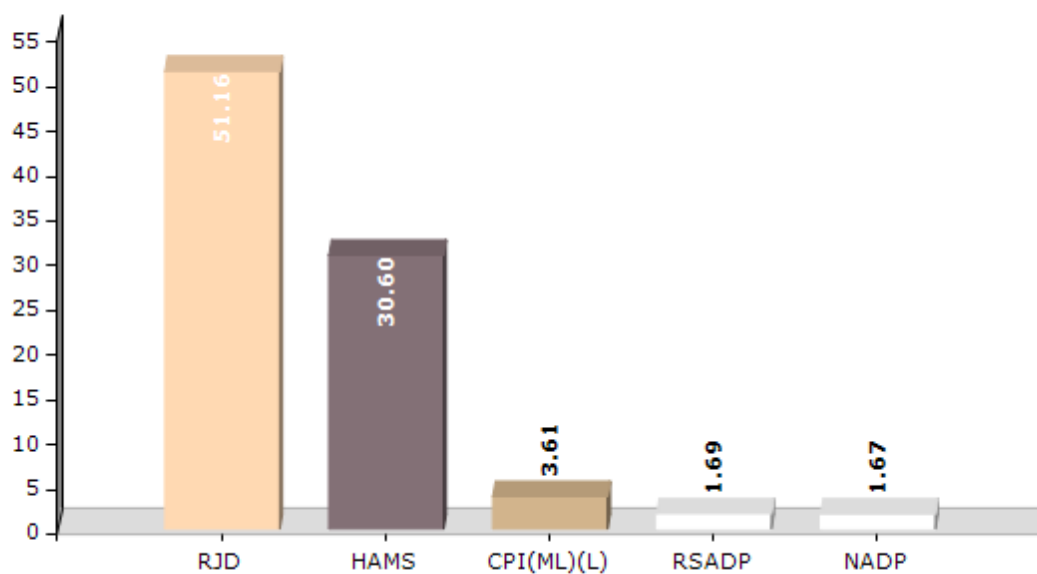
Note : AE : Assembly Election, PE : Assembly Segment of Parliamentary Election

Historical Summary Election Results

Summary Result of Assembly Election - 2015

Candidate Name	Party	Votes	Votes %
Subedar Das	RJD	66631	51.16
Jitan Ram Manjhi	HAMS	39854	30.6
Dhananjay Kishor	CPI(ML)(L)	4705	3.61
Kunjan Kumar	RSADP	2196	1.69
Ramanuj Paswan	NADP	2178	1.67
Mritunjay Paswan	BSP	2045	1.57
Arun Kumar	BIP	1843	1.42
Kusum Devi	SASAPT	1375	1.06
Komal Paswan	SP	1366	1.05
Awadh Paswan	RJnJnP	1300	1
Parmanand Paswan	RPI	1282	0.98
Naresh Chaudhary	BMUP	1052	0.81
Asha Devi	GJDS	880	0.68
	NOTA	3536	2.71

Votes Percentage of Top Parties - 2015



Polling Station Level Election Results

Number and Name of Polling Stations (PS) (2020)

Number of Polling Stations	Name of Polling Stations	Number of Polling Stations	Name of Polling Stations
1	Prathamik Vidyalay Mudera	15	Utkramit Madhy Vidyalay Bara, Jalalpur (Uttar Bhag)
2	Utkramit Madhy Vidyalay Kishunpur (Uttar Bhag)	15A	Utkramit Madhy Vidyalay Bara, Jalalpur (Uttar Bhag)
2A	Utkramit Madhy Vidyalay Kishunpur (Uttar Bhag)	16	Utkramit Madhya Vidyalay, Rasula,
3	Prathamik Vidyalay Murasa	17	Utkramit Madhy Vidyalay, Chatar (Uttari Bhag)
4	Prathamik Vidyalay Nerathua (Purwi Bhag)	17A	Utkramit Madhy Vidyalay, Chatar (Uttari Bhag)
4A	Prathamik Vidyalay Nerathua (Purwi Bhag)	18	Navsrijit Prathamik Vidyalay Dhir Vigaha
5	Prathamik Vidyalay Nerathua (Pashchami Bhag)	19	Prathamik Vidyalay Hati
5A	Prathamik Vidyalay Nerathua (Pashchami Bhag)	20	Utkramit Madhy Vidyalay, Ganeshi Bigha (Uttari Bhag)
6	Prathamik Vidyalay Paigambarpur (Pashchami Bhag)	21	Prathamik Vidyalay, Saidpur,
6A	Prathamik Vidyalay Paigambarpur (Pashchami Bhag)	22	Utkramit Madhya Vidyalay Ganesh Vigaha (Dakshin Bhag)
7	Utkramit Madhy Vidyalay Asiyawa (Dakshin Bhag)	23	Utkramit Madhy Vidyalay, Sulemanpur (Paschimi Bhag)
7A	Utkramit Madhy Vidyalay Asiyawa (Dakshin Bhag)	23A	Utkramit Madhy Vidyalay, Sulemanpur (Paschimi Bhag)
8	Prathamik Vidyalay Bhadaseri	24	Prathamik Vidyalay Ibrahimpur Lodipur
9	Prathamik Vidyalay Tejabigha	25	Prathamik Vidyalay Mahamadpur (Uttar Bhag)
10	Samudayik Bhawan Gopalpur,	25A	Prathamik Vidyalay Mahamadpur (Uttar Bhag)
11	Utkramit Madhy Vidyalay Imaliya (Purvi Bhag)	26	Utkramit Madhy Vidyalay, Maniyari (Uttar Bhag)
11A	Utkramit Madhy Vidyalay Imaliya (Purvi Bhag)	26A	Utkramit Madhy Vidyalay, Maniyari (Uttar Bhag)
12	Madhy Vidyalay Bhelavar (Uttar Bhag)	27	Samudayik Bhawan Kumadiha
12A	Madhy Vidyalay Bhelavar (Uttar Bhag)	28	Prathamik Vidyalay Bara Urdu
13	Uchch Vidyalay, Vadhauna (Purvi Bhag)	29	Nawsrijit Prathamik Vidyalay Ramdani
14	Uchch Vidyalay, Vadhauna (Paschimi Bhag)	30	Utkramit Prathamik Vidyalay Basantpur Harhar

Contd....

Polling Station Level Election Results

Polling Station-wise Votes Secured by Overall Top Five Parties in Makhdumpur Assembly in Assembly Election (AE) under Jahanabad Parliamentary Constituency in Bihar (2020)

Number of Polling Station	Winner - Satish Kumar (RJD)	Runner-up - Devendra Kumar (HAMS)	3rd - Byas Muni Das (BSP)	4th - Dharmendra Kumar (IND)	5th - Avadh Paswan (NFDEP)	NOTA	Other	Total Votes Secured
25A	176	10	202	2	4	3	13	410
26	286	161	15	4	7	11	19	503
26A	345	27	6	2	4	0	4	388
27	395	4	6	1	2	5	6	419
28	421	8	17	64	8	10	18	546
29	293	50	3	3	3	12	13	377
30	444	49	85	4	8	5	26	621
31	93	186	2	6	2	11	19	319
31A	263	83	7	11	9	7	9	389
32	365	55	16	2	4	2	6	450
33	326	99	17	2	2	3	14	463
34	153	251	45	3	8	8	28	496
35	600	7	7	1	14	6	24	659
36	331	28	2	1	7	4	7	380
37	245	162	29	13	11	8	24	492
38	392	56	45	2	8	3	12	518
39	285	156	12	8	3	12	21	497
40	219	93	6	5	5	7	10	345
41	257	230	48	6	3	12	23	579
42	58	130	36	1	0	5	5	235
42A	68	132	73	16	4	2	12	307
43	100	172	7	2	8	8	7	304
44	81	136	4	2	0	0	16	239
44A	15	210	1	1	2	2	1	232
45	59	148	21	4	5	5	10	252
45A	33	140	20	5	10	0	5	213
46	163	108	40	2	5	5	8	331
47	322	161	21	9	7	11	13	544
48	250	36	28	1	8	1	11	335
48A	295	56	5	2	5	2	7	372
49	385	1	3	14	1	1	5	410
50	273	108	47	12	3	4	14	461
51	230	10	146	2	3	4	7	402
52	126	256	99	15	3	7	20	526
53	147	134	14	27	3	4	12	341

Contd....

Polling Station Level Election Results

Winner, Runner-up and 3rd Party Position & Winning Margin According to Polling Stations in Makhdumpur Assembly in Assembly Election (AE) under Jahanabad Parliamentary Constituency in Bihar (2020)

Polling Station Number	Winner Party	Winner Votes (%)	Runner-up Party	Runner-up Votes (%)	Winning Margin Votes (%)	Third Party	Third Party Votes (%)	Other Votes (%)
54	HAMS	106 (44.92)	RJD	87 (36.86)	19 (8.06)	IND (DK)	14 (5.93)	29 (12.29)
55	HAMS	208 (42.45)	RJD	184 (37.55)	24 (4.9)	BSP	16 (3.27)	82 (16.73)
56	HAMS	264 (50.67)	RJD	131 (25.14)	133 (25.53)	IND (DK)	56 (10.75)	70 (13.44)
57	RJD	398 (96.6)	HAMS	6 (1.46)	392 (95.14)	BSP	4 (0.97)	4 (0.97)
57A	RJD	375 (88.86)	HAMS	31 (7.35)	344 (81.51)	IND (DK)	5 (1.18)	11 (2.61)
58	HAMS	152 (47.65)	BSP	120 (37.62)	32 (10.03)	RJD	36 (11.29)	11 (3.45)
58A	HAMS	177 (53.64)	BSP	77 (23.33)	100 (30.31)	RJD	50 (15.15)	26 (7.88)
59	RJD	157 (46.87)	HAMS	113 (33.73)	44 (13.14)	BSP	15 (4.48)	50 (14.93)
59A	RJD	139 (46.8)	HAMS	108 (36.36)	31 (10.44)	BSP	22 (7.41)	28 (9.43)
60	RJD	254 (60.77)	HAMS	120 (28.71)	134 (32.06)	IND (DK)	8 (1.91)	36 (8.61)
61	HAMS	398 (91.92)	RJD	21 (4.85)	377 (87.07)	IND (DK)	5 (1.15)	9 (2.08)
62	HAMS	286 (60.21)	RJD	137 (28.84)	149 (31.37)	SANKISVP	12 (2.53)	40 (8.42)
63	HAMS	181 (47.88)	RJD	171 (45.24)	10 (2.64)	NFDEP	7 (1.85)	19 (5.03)
63A	HAMS	182 (53.69)	RJD	113 (33.33)	69 (20.36)	IND (DK)	14 (4.13)	30 (8.85)
64	RJD	372 (98.15)	NFDEP	4 (1.06)	368 (97.09)	HAMS	1 (0.26)	2 (0.53)
64A	RJD	327 (90.83)	NFDEP	9 (2.5)	318 (88.33)	IND (RP)	8 (2.22)	16 (4.44)
65	RJD	243 (50.41)	HAMS	192 (39.83)	51 (10.58)	IND (DK)	10 (2.07)	37 (7.68)
66	RJD	206 (43.37)	HAMS	178 (37.47)	28 (5.9)	IND (DK)	34 (7.16)	57 (12)
67	RJD	581 (97.65)	IND (DK)	5 (0.84)	576 (96.81)	HAMS	3 (0.5)	6 (1.01)
68	RJD	121 (41.58)	HAMS	118 (40.55)	3 (1.03)	BSP	24 (8.25)	28 (9.62)
68A	RJD	148 (45.26)	HAMS	130 (39.76)	18 (5.5)	BSP	30 (9.17)	19 (5.81)
69	HAMS	242 (84.91)	RJD	27 (9.47)	215 (75.44)	IND (RP)	4 (1.4)	12 (4.21)
69A	HAMS	245 (65.86)	RJD	63 (16.94)	182 (48.92)	NFDEP	17 (4.57)	47 (12.63)
70	HAMS	147 (83.52)	RJD	25 (14.2)	122 (69.32)	IND (DK)	2 (1.14)	2 (1.14)
70A	HAMS	160 (55.36)	RJD	87 (30.1)	73 (25.26)	IND (DK)	21 (7.27)	21 (7.27)
71	RJD	129 (58.9)	HAMS	73 (33.33)	56 (25.57)	BSP	5 (2.28)	12 (5.48)
71A	RJD	97 (44.91)	HAMS	88 (40.74)	9 (4.17)	IND (RP)	7 (3.24)	24 (11.11)
72	RJD	394 (88.74)	HAMS	11 (2.48)	383 (86.26)	IND (RP)	10 (2.25)	29 (6.53)
73	RJD	424 (91.77)	HAMS	22 (4.76)	402 (87.01)	NFDEP	7 (1.52)	9 (1.95)
74	HAMS	120 (85.11)	RJD	16 (11.35)	104 (73.76)	NFDEP	2 (1.42)	3 (2.13)
75	HAMS	209 (80.38)	RJD	21 (8.08)	188 (72.3)	NFDEP	9 (3.46)	21 (8.08)
75A	HAMS	258 (85.71)	RJD	23 (7.64)	235 (78.07)	SANKISVP	5 (1.66)	15 (4.98)
76	HAMS	126 (51.22)	RJD	106 (43.09)	20 (8.13)	IND (DK)	4 (1.63)	10 (4.07)
76A	RJD	251 (71.51)	HAMS	63 (17.95)	188 (53.56)	IND (DK)	17 (4.84)	20 (5.7)
77	RJD	305 (57.01)	HAMS	180 (33.64)	125 (23.37)	NFDEP	9 (1.68)	41 (7.66)

Contd....

Socio-Economic Amenities - Rural

Access to Education Facilities

Particulars	Number of Villages (% of Population)				
	Available	Not Available	If Not Available (Distance of Nearest Facility)		
			A	B	C
Govt. Primary School	153 (97)	17 (3)	16 (3)	1 (0)	0 (0)
Private Primary School	19 (10)	151 (90)	0 (0)	0 (0)	0 (0)
Govt. Middle School	85 (68)	85 (32)	38 (14)	22 (9)	20 (8)
Private Middle School	14 (8)	156 (92)	3 (1)	0 (0)	0 (0)
Govt. Secondary School	19 (20)	151 (80)	54 (27)	43 (25)	44 (23)
Private Secondary School	4 (3)	166 (97)	5 (2)	4 (2)	0 (0)
Govt. Senior Secondary School	5 (3)	165 (97)	16 (8)	56 (36)	82 (47)
Private Senior Secondary School	1 (1)	169 (99)	3 (1)	5 (2)	3 (1)
Govt. Arts and Science Degree College	0 (0)	170 (100)	2 (1)	35 (25)	126 (71)
Private Arts and Science Degree College	0 (0)	170 (100)	3 (1)	3 (1)	1 (0)
Govt. Engineering College	0 (0)	170 (100)	0 (0)	0 (0)	0 (0)
Private Engineering College	0 (0)	170 (100)	0 (0)	0 (0)	170 (100)
Govt. Medicine College	0 (0)	170 (100)	0 (0)	0 (0)	170 (100)
Private Medicine College	0 (0)	170 (100)	0 (0)	0 (0)	0 (0)
Govt. Management Institute	0 (0)	170 (100)	0 (0)	0 (0)	170 (100)
Private Management Institute	0 (0)	170 (100)	0 (0)	0 (0)	0 (0)
Govt. Polytechnic	0 (0)	170 (100)	0 (0)	0 (0)	170 (100)
Private Polytechnic	0 (0)	170 (100)	0 (0)	0 (0)	0 (0)
Govt. Vocational Training School/ITI	0 (0)	170 (100)	0 (0)	0 (0)	170 (100)
Private Vocational Training School/ITI	0 (0)	170 (100)	0 (0)	0 (0)	0 (0)
Govt. Non Formal Training Centre	0 (0)	170 (100)	25 (17)	96 (56)	49 (26)
Private Non Formal Training Centre	0 (0)	170 (100)	0 (0)	0 (0)	0 (0)
Govt. School For Disabled	0 (0)	170 (100)	7 (3)	31 (22)	100 (55)
Private School For Disabled	0 (0)	170 (100)	2 (1)	6 (2)	24 (16)
Government Others	0 (0)	170 (100)	0 (0)	0 (0)	141 (80)
Private Others	3 (3)	167 (97)	0 (0)	0 (0)	3 (1)

Note : Distance A : Less than 5 km; B : Between 5-10 km; C : 10+ km.; Source : Data Analysis is based on 2011 Census.

DISCLAIMER

The Terms of Use and Disclaimer of Datanet India Private Limited (hereinafter referred to as "Datanet") for use of this analysis report of **Makhdumpur Assembly Constituency (Makhdumpur Vidhan Sabha)** :-

1. **Assembly Factbook™** is a Registered Trade Mark owned by Datanet.
2. All the maps are sketched and graphical representation only and have not been drawn to the scale and also not to represent the actual geographical area or boundary of the unit.
3. The data for the aforesaid analysis is based on authentic sources and has been culled from the various publications of Census, CSO and NSSO for district and block level data, various central and state government departments, Central & State Elections Commissions and the concerned Returning Officers' releases, Electoral Rolls, Election results and allied publications, internal assessment, surveys, estimates and analysis. Therefore, certain adjustment of data at micro level may have been done to arrive closer to the macro data.
4. Data have been provided on an "As Is" and "As AVAILABLE" basis
5. The colours shown in the maps or diagram and charts of a particular party, alliance or AC are indicative and do not represent them.
6. This publication which includes maps, sheets, graphs and data would be the property under copyright of Datanet only. The user may use these for its internal study, analysis and research purposes. It's public display, re-selling or any commercial uses by the user are not allowed.
7. Datanet has taken due care and caution in compilation and processing of data and allied information, but does not guarantee the accuracy, adequacy or completeness of any information/analysis and will be not responsible for any errors or omissions or for the results obtained from the use of such information/analysis.
8. All the contents for the publication have been culled from various authentic sources and Datanet reasonably believes such sources to be reliable, but does not make any representations, express or implied as to the accuracy or fitness of use of such information. The information or contents of the information/analysis do not constitute advice and should not be relied upon in making (or refraining from making) any decision. Any reliance placed upon the information provided by Datanet is the sole responsibility and strictly at the user's risk.
9. In no event will Datanet be liable for any damages (including, without limitation, damages for loss of business projects, or loss of profits) arising in contract, tort or otherwise from the use of or inability to use any of its contents, or from any action taken (or refrained from being taken) as a result of using the analysis or any of its contents. Datanet its directors, owners, editors, officials, employees, distributor and agents or any associate will not be liable for any errors in the information contained or any consequences arising from the use of the contents of the provided information/analysis.
10. If any provision of these terms and conditions is held invalid or illegal or unenforceable for any reason by any court of competent jurisdiction, such provision shall be severed and the remainder of provisions of the terms and conditions shall continue in full force and effect as if the Term of Use had been executed with the invalid, illegal or unenforceable provision eliminated.
11. If there are any discrepancies in the information provided, please bring it to attention of Datanet for suitable rectification measures.

Buy Online This Complete Book At
Datanet India eBooks Store

www.indiastatpublications.com

or go directly at

[http://www.indiastatpublications.com/
Assembly_factbook/Bihar/Jahanabad/ Makhdumpur](http://www.indiastatpublications.com/Assembly_factbook/Bihar/Jahanabad/Makhdumpur)

 **indiastat**elections

ISBN : 978-93-5313-130-2



9 789353 131302