



Bihar

Assembly Factbook™

Chakai Assembly Constituency

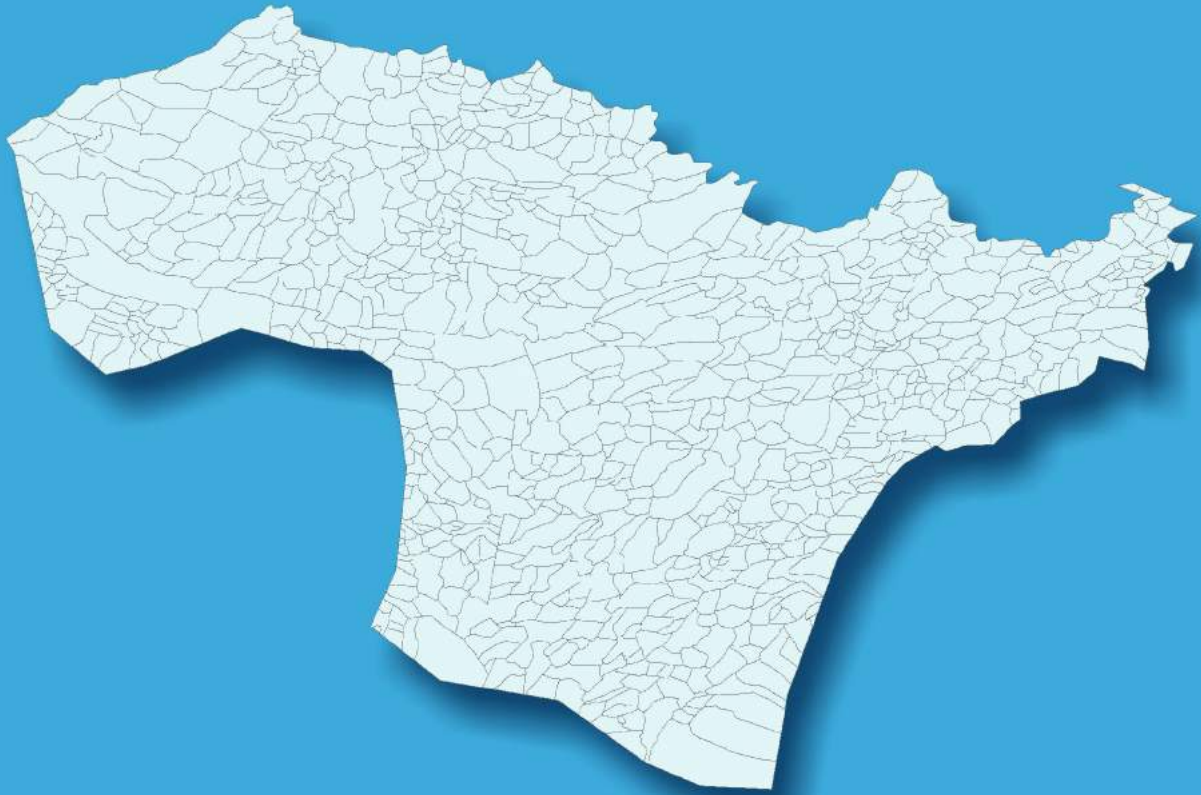


Key Electoral Data of Chakai
Assembly Constituency (Vidhan Sabha)

Bihar

Assembly Factbook™

Chakai Assembly Constituency



Chakai Vidhan Sabha

Editor & Director

Dr. R.K. Thukral

Research Editor

Dr. Shafeeq Rahman

Compiled, Researched and Published by Datanet India Pvt. Ltd.

D-100, 1st Floor,

Okhla Industrial Area, Phase-I,
New Delhi- 110020.

Ph.: 91-11- 43580781-84

Email : support@indiastatpublications.com

Website : www.indiastatelections.com

Online Book Store :

www.indiastatpublications.com

Report No. : AFB/BR-243-0125

ISBN : 978-93-5313-064-0

First Edition : January, 2018

Eighth Updated Edition : January, 2025

Price : Rs. 11500/-

US\$ 310

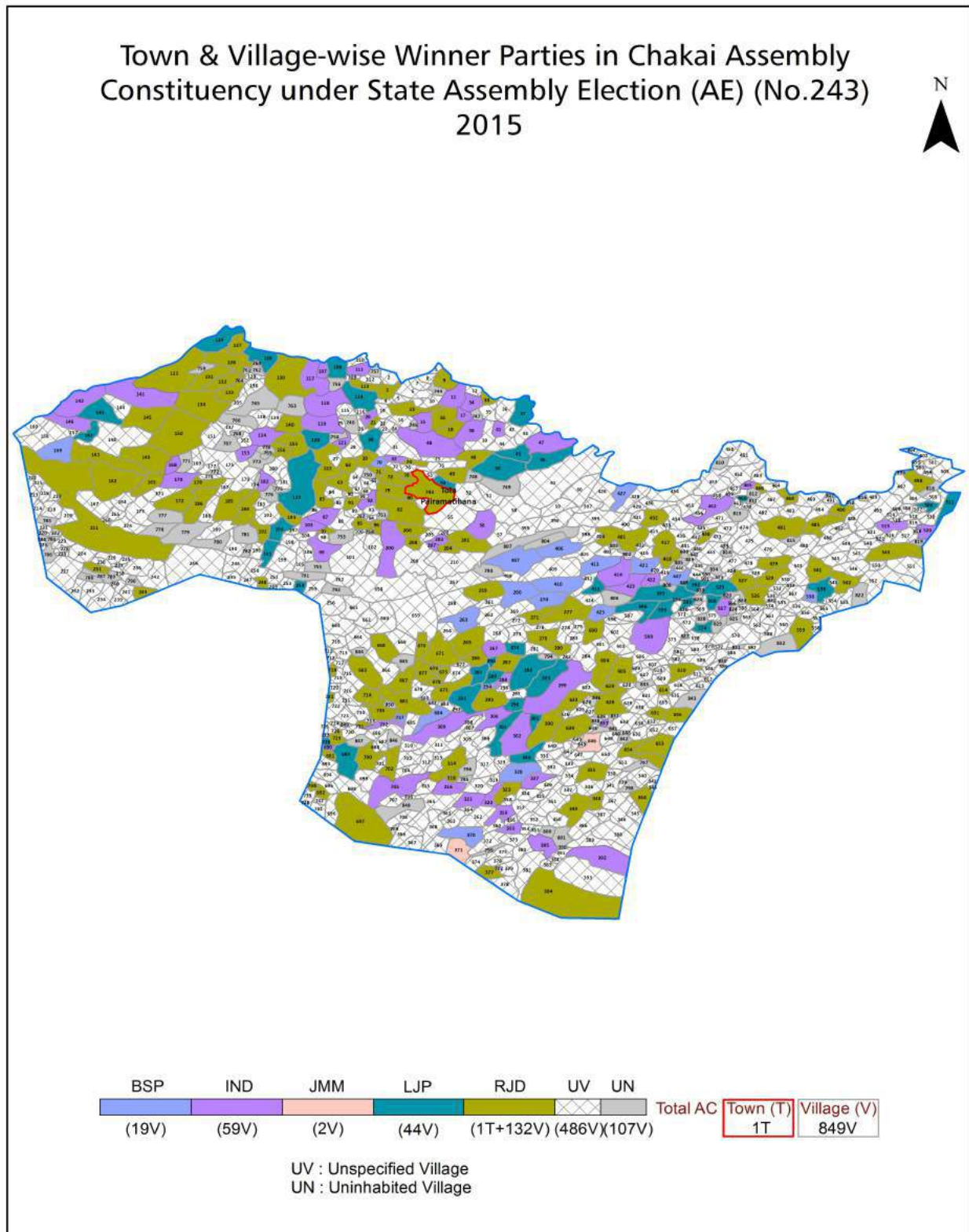
© Datanet India Pvt. Ltd.

All rights reserved. No part of this book may be reproduced, stored in a retrieval system or transmitted in any form or by any means, mechanical photocopying, photographing, scanning, recording or otherwise without the prior written permission of the publisher. Please refer to Disclaimer at page no. 300 for the use of this publication.

Printed in India

No.	Particulars	Page No.
	Introduction	
1	Assembly Constituency - (Vidhan Sabha) at a Glance Features of Assembly as per Delimitation Commission of India (2008)	1-2
	Location and Political Maps	
2	Location Map Boundaries of Assembly Constituency - (Vidhan Sabha) in District Boundaries of Assembly Constituency under Parliamentary Constituency - (Lok Sabha) Town & Village-wise Winner Parties- 2024, 2020, 2019, 2015, 2014, 2010 and 2009	3-11
	Administrative Setup (2011)	
3	District Sub-district Towns Villages Inhabited Villages Uninhabited Villages Village Panchayat Intermediate Panchayat	12-48
	Demographics (2011)	
4	Population Households Rural/Urban Population Towns and Villages by Population Size Sex Ratio (Total & 0-6 Years) Religious Population Social Population Literacy Rate	49-50
	Electoral Features	
5	Important Dates of Last Elections Held Electors by Gender Service Electors Voters Voters Turnout Polling Stations & Average Number of Electors per Polling Station Electors by Age Group Present Elected Representatives	51-56
	Historical Summary Election Results	
6	Vote Share of Major Parties Winning Margin (Number & Percentage) Polarity of Parties Summary Result of Assembly Segment of Parliamentary Elections 2024, 2019, 2014, 2009, 2004 and 1999 Summary Result of Assembly Elections 2020, 2015, 2010, 2005 (Oct), 2005 (Feb), 2000, 1995, 1990, 1985, 1980, 1977, 1972, 1969, 1967 and 1962	57-80
	Polling Station Level Election Results	
7	Name and Number of Polling Station 2024, 2020, 2019, 2015, 2014, 2010 and 2009 Polling Station-wise Electors, Voters & Voters Turnout 2024, 2020, 2019, 2015, 2014, 2010 and 2009 Polling Station wise Elections Results 2024, 2020, 2019, 2015, 2014, 2010 and 2009	81-280
	Share of Assembly Constituency	
8	Share of Assembly Constituency - (Vidhan Sabha) in State, District and Parliamentary Constituency - (Lok Sabha)	281
	Socio-Economic Amenities (2011)	
9	Access to Administrative Units Agricultural, Manufacturing and Industrial Commodities Demographic Indicators Education Health & Manpower Drinking Water Supply Sanitation Entertainment and Recreations Infrastructure Power Food Allocation Distribution and Marketing of Agriculture Commodities Infrastructure Transport and Road Infrastructure Communication Banking and Financial Services Land Use Irrigation Source	283-296
10	Abbreviation & Sources	297-299
11	Disclaimer	300

Location & Political Map



Administrative Setup

List of Village Panchayat & Intermediate Panchayat (Block) Name - 2011

Village Name	Village Panchayat Name	Intermediate Panchayat Name
Akhane	Nawadih Silfari	Chakai
Asnaha	Chandarmandih	Chakai
Churhit	Churhait	Sono
Dokli	Babudih, Churhait	Sono
Gandar	Gandar, Dahari	Sono
Jaruwadih	Nawadih Silfari	Chakai
Jimatpur	Nawadih Silfari	Chakai
Jimatpur	Nawadih Silfari	Chakai
Kanhaipharka	Keshofarka	Sono
Keshopharka	Keshofarka	Sono
Koiridih	Ghutwe	Chakai
Ramsinghdih	Ramsinghdih	Chakai
Shaharpharka	Churhait, Keshofarka	Sono
Tola Agahara	Sarebad, Babudih	Sono
Tola Aklu	Naiyadih	Sono
Tola Akonwatanr	Naiyadih	Sono
Tola Algori	Kaleyanpur	Chakai
Tola Amarwa	Nauadih	Chakai
Tola Amatanr	Kiajori	Chakai
Tola Ambakol	Ghutwe	Chakai
Tola Ambatanr	Ghutwe	Chakai
Tola Amjhari	Dhodhri	Sono
Tola Amtaha	Bongi	Chakai
Tola Andidih	Chakai	Chakai
Tola Angnapathal	Balthar	Sono
Tola Arapathal	Kaleyanpur	Chakai
Tola Arbaria	Naiyadih	Sono
Tola Asahana	Babudih	Sono
Tola Asalbania	Phariatadih	Chakai

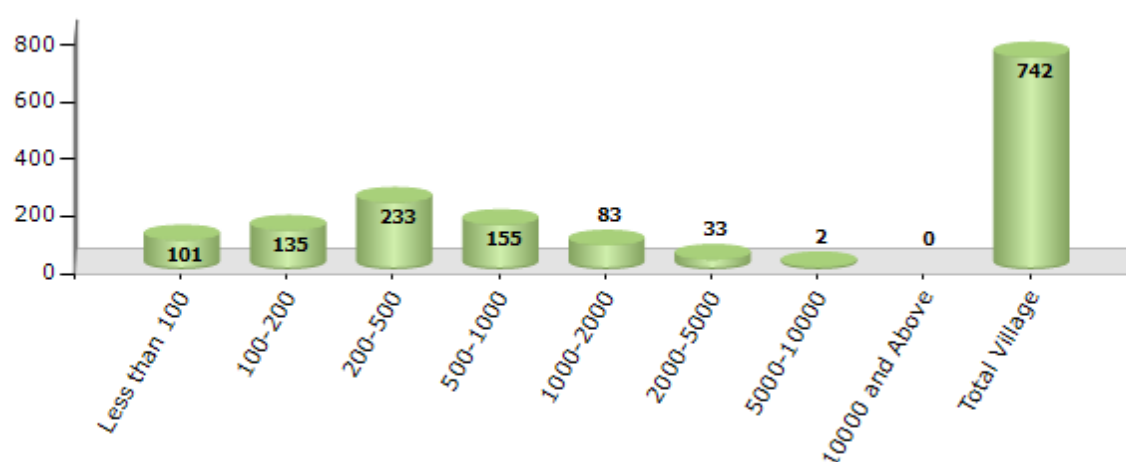
Contd....

Demographics

Number of Villages by Population Size - 2011

Less than 100	100-200	200-500	500-1000	1000-2000	2000-5000	5000-10000	10000 and Above	Total Village
101	135	233	155	83	33	2	0	742

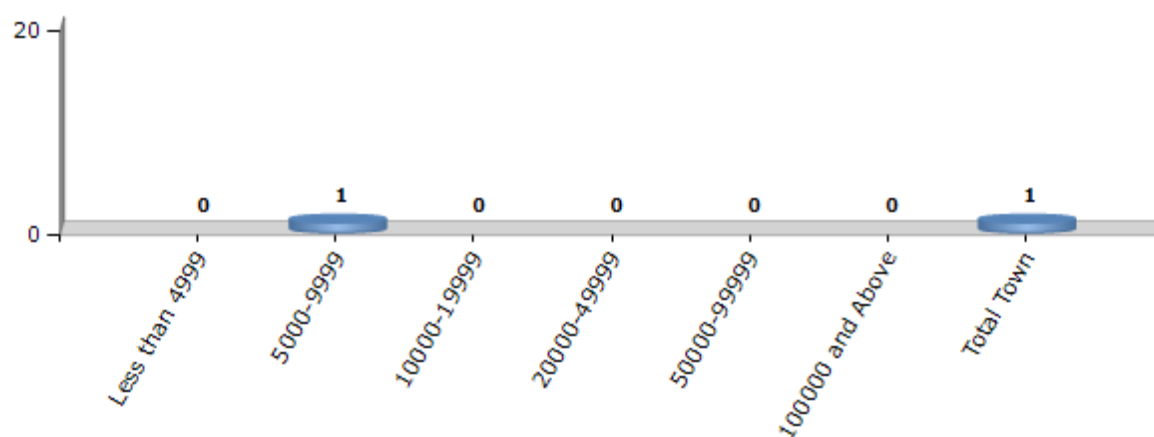
Number of Villages by Population Size - 2011



Number of Towns by Population Size - 2011

Less than 4999	5000-9999	10000-19999	20000-49999	50000-99999	100000 and Above	Total Town
0	1	0	0	0	0	1

Number of Towns by Population Size - 2011

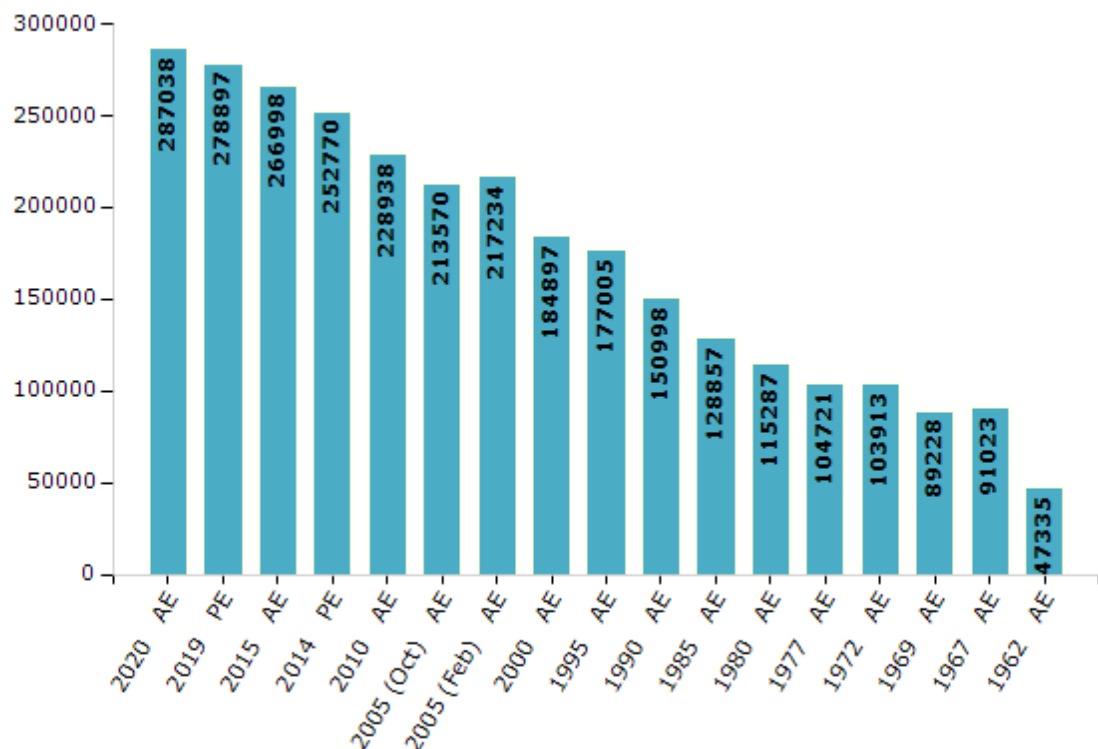


Electoral Features

Electors by Male & Female

Year	Male	Female	Others	Total	Year	Male	Female	Others	Total
2020 AE	152487	134537	14	287038	1995 AE	92619	84386	-	177005
2019 PE	147699	131186	12	278897	1990 AE	78537	72461	-	150998
2015 AE	143239	123752	7	266998	1985 AE	66509	62348	-	128857
2014 PE	134877	117886	7	252770	1980 AE	59372	55915	-	115287
2010 AE	122341	106597	0	228938	1977 AE	53320	51401	-	104721
2009 PE	-	-	-	-	1972 AE	53218	50695	-	103913
2005 (Oct) AE	113948	99622	-	213570	1969 AE	48339	40889	-	89228
2005 (Feb) AE	117652	99582	-	217234	1967 AE	-	-	-	91023
2004 PE	-	-	-	-	1962 AE	-	-	-	47335
2000 AE	97880	87017	-	184897	1957 AE	-	-	-	-
1999 PE	-	-	-	-	1952 AE	-	-	-	-

Number of Electors



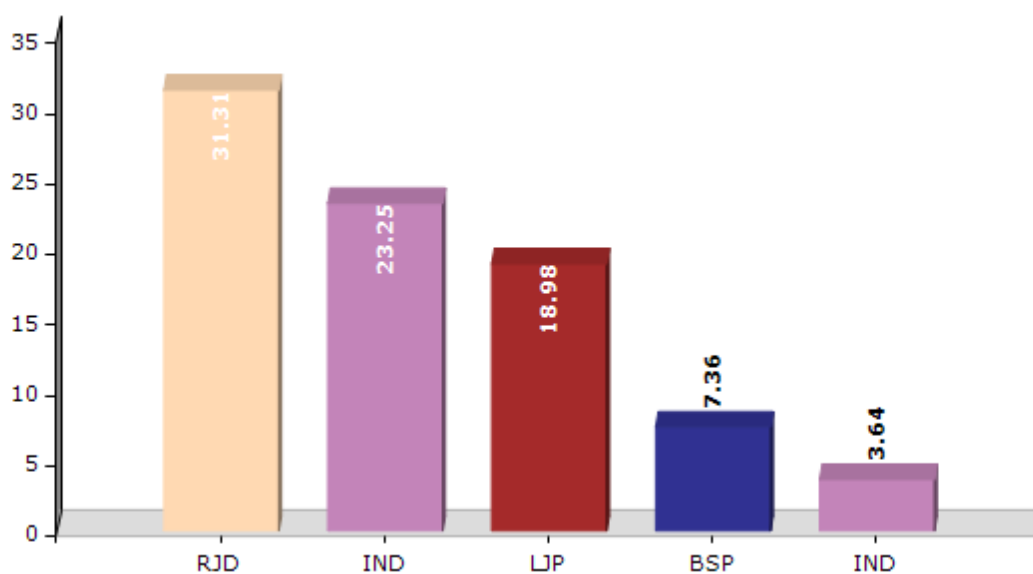
Note : AE : Assembly Election, PE : Assembly Segment of Parliamentary Election

Historical Summary Election Results

Summary Result of Assembly Election - 2015

Candidate Name	Party	Votes	Votes %
Savitri Devi	RJD	47064	31.31
Sumit Kumar Singh	IND	34951	23.25
Vijay Kumar Singh	LJP	28535	18.98
Jowana Hansda	BSP	11068	7.36
Virendra Kumar	IND	5470	3.64
Nepali Singh	JMM	4532	3.01
Dharmendra Sinha	LSSP	2548	1.69
Manoj Kumar Pandey	CPI(ML)(L)	2309	1.54
Bajrang Bihari Singh	IND	2233	1.49
Abhinav Singh	IND	1782	1.19
Nandu Yadav	IND	1343	0.89
Rajendra Yadav	SHD	1121	0.75
	NOTA	7379	4.91

Votes Percentage of Top Parties - 2015



Polling Station Level Election Results

Number and Name of Polling Stations (PS) (2020)

Number of Polling Stations	Name of Polling Stations	Number of Polling Stations	Name of Polling Stations
1	Utkramit Madhya Vidyalay Savaijor (Naya Bhavan)	16A	Madhya Vidyalay Kevali
2	Utkramit Madhya Vidyalay Savaijor Purana Bhavan	17	Utkramit Madhay Vidyalay Dokali Purbi Bhag
3	Prathamik Vidyalay Devarukhi	17A	Utkramit Madhay Vidyalay Dokali Purbi Bhag
4	Staraunnatar Madhya Vidyalay Agahara Purwi Bhag	18	Samudayik Bhawan Mangaruadih
4A	Staraunnatar Madhya Vidyalay Agahara Purwi Bhag	19	Rajkiya Somposit Uchha Vidhalay Sono Uttri Bhag
5	Staraunnatar Madhya Vidyalay Agahara Pashchim Bhag	19A	Rajkiya Somposit Uchha Vidhalay Sono Uttri Bhag
5A	Staraunnatar Madhya Vidyalay Agahara Pashchim Bhag	20	Rajkiya Somposit Uchha Vidhalay Sono Dakshin Bhag
6	Prathamik Vidyalay Chapari	20A	Rajkiya Somposit Uchha Vidhalay Sono Dakshin Bhag
7	Utkramit Madhy Vidyalay Mogalachapari Pashchim Bhag	21	Utkramit Madhay Vidyalay Mandhata Dakshin Bhag
7A	Utkramit Madhy Vidyalay Mogalachapari Pashchim Bhag	21A	Utkramit Madhay Vidyalay Mandhata Dakshin Bhag
8	Utkramit Madhya Vidyalay Sarevad, Utari Bhag	22	Madhya Vidyalay Sono
9	Utkramit Madhya Vidyalay Sarevad, Purbi Bhag	23	Pariyojana Balika Uchha Vidyalay Sono
10	Utkramit Madhya Vidhalay Sarebad Dakshin Bhag	24	Utkramit Madhy Vidyalay Sono , Purana Bhavan Baya Bhag
10A	Utkramit Madhya Vidhalay Sarebad Dakshin Bhag	24A	Utkramit Madhy Vidyalay Sono , Purana Bhavan Baya Bhag
11	Panchayat Bhavan Asahana	25	Utkramit Madhy Vidyalay Sono, Naya Bhavan Purbi Bhag
12	Prathamik Vidyalay Nimadih	25A	Utkramit Madhy Vidyalay Sono, Naya Bhavan Purbi Bhag
13	Utkramit Madhya Vidyalay Babudih, Pashchim Bhag	26	Utkramit Madhya Vidhalay Balathar Purav Bhag
14	Utkramit Madhya Vidhalay Babudih (Madhya Bhag)	27	Utkramit Madhya Vidhalay Balathar Paschim Bhag
15	Utkramit Madhya Vidyalay Babudih, Purwi Bhag	28	Prathamik Vidyalay Painwajan Dakshin Bhag
15A	Utkramit Madhya Vidyalay Babudih, Purwi Bhag	28A	Prathamik Vidyalay Painwajan Dakshin Bhag
16	Madhya Vidyalay Kevali	29	Uttakramit Madhay Vidhalay Khurdmhapur Naya Bhawan

Contd....

Polling Station Level Election Results

Polling Station-wise Votes Secured by Overall Top Five Parties in Chakai Assembly in Assembly Election (AE) under Jamui Parliamentary Constituency in Bihar (2020)

Number of Polling Station	Winner - Sumit Kumar Singh (IND)	Runner-up - Savitri Devi (RJD)	3rd - Sanjay Prasad (JD(U))	4th - Sanjay Kumar Mandal (LJP)	5th - Elizabeth Soren (JMM)	NOTA	Other	Total Votes Secured
25	195	90	65	29	7	10	14	410
25A	102	69	134	11	2	6	25	349
26	370	36	98	10	1	7	15	537
27	199	146	118	16	7	14	30	530
28	78	217	48	16	42	22	40	463
28A	113	265	46	21	5	14	42	506
29	134	189	22	26	0	4	12	387
29A	119	192	16	16	0	10	12	365
30	73	141	15	67	2	1	76	375
30A	221	165	12	13	0	6	21	438
31	351	1	14	0	0	4	4	374
31A	305	0	24	4	0	3	10	346
32	101	259	39	13	1	21	55	489
32A	95	130	63	24	2	4	8	326
33	206	13	174	106	4	22	33	558
34	290	196	43	22	0	13	26	590
35	121	153	14	11	6	14	45	364
36	65	124	9	19	7	3	14	241
37	374	207	32	7	1	13	30	664
38	98	8	25	320	23	13	19	506
39	161	11	19	86	98	12	24	411
40	131	83	21	22	10	4	30	301
40A	124	94	24	8	13	7	21	291
41	169	121	15	36	7	28	46	422
42	124	190	21	103	1	12	30	481
43	68	11	98	382	0	23	14	596
43A	23	58	104	226	0	19	15	445
44	101	78	98	20	3	4	19	323
44A	74	118	73	21	0	3	16	305
45	43	184	33	18	1	2	34	315
45A	51	163	34	22	48	5	23	346
46	120	49	145	135	51	19	30	549
47	20	15	120	106	0	3	6	270
47A	13	48	26	172	0	14	20	293
48	106	131	24	194	2	50	53	560

Contd....

Polling Station Level Election Results

Winner, Runner-up and 3rd Party Position & Winning Margin According to Polling Stations in Chakai Assembly in Assembly Election (AE) under Jamui Parliamentary Constituency in Bihar (2020)

Polling Station Number	Winner Party	Winner Votes (%)	Runner-up Party	Runner-up Votes (%)	Winning Margin Votes (%)	Third Party	Third Party Votes (%)	Other Votes (%)
48A	IND (SKS)	173 (36.58)	LJP	153 (32.35)	20 (4.23)	RJD	94 (19.87)	53 (11.21)
49	LJP	226 (58.55)	JD(U)	83 (21.5)	143 (37.05)	RJD	35 (9.07)	42 (10.88)
49A	RJD	140 (39.22)	LJP	117 (32.77)	23 (6.45)	JD(U)	30 (8.4)	70 (19.61)
50	LJP	280 (62.78)	JD(U)	61 (13.68)	219 (49.1)	IND (SKS)	58 (13)	47 (10.54)
50A	LJP	263 (59.23)	IND (SKS)	62 (13.96)	201 (45.27)	JD(U)	61 (13.74)	58 (13.06)
51	LJP	119 (35.95)	IND (SKS)	109 (32.93)	10 (3.02)	JD(U)	57 (17.22)	46 (13.9)
51A	LJP	224 (56)	JD(U)	51 (12.75)	173 (43.25)	RJD	48 (12)	77 (19.25)
52	LJP	262 (47.81)	IND (SKS)	121 (22.08)	141 (25.73)	JD(U)	96 (17.52)	69 (12.59)
53	LJP	293 (53.76)	IND (SKS)	110 (20.18)	183 (33.58)	JD(U)	55 (10.09)	87 (15.96)
53A	LJP	249 (52.42)	IND (SKS)	131 (27.58)	118 (24.84)	JD(U)	44 (9.26)	51 (10.74)
54	LJP	366 (51.62)	RJD	107 (15.09)	259 (36.53)	JD(U)	79 (11.14)	157 (22.14)
55	LJP	302 (51.45)	JD(U)	171 (29.13)	131 (22.32)	IND (SKS)	56 (9.54)	58 (9.88)
56	LJP	292 (49.58)	JD(U)	76 (12.9)	216 (36.68)	JMM	75 (12.73)	146 (24.79)
57	LJP	237 (52.55)	RJD	62 (13.75)	175 (38.8)	JD(U)	61 (13.53)	91 (20.18)
57A	LJP	226 (52.56)	IND (SKS)	75 (17.44)	151 (35.12)	JD(U)	70 (16.28)	59 (13.72)
58	JD(U)	148 (41.11)	IND (SKS)	123 (34.17)	25 (6.94)	LJP	44 (12.22)	45 (12.5)
58A	JD(U)	157 (46.18)	IND (SKS)	110 (32.35)	47 (13.83)	LJP	45 (13.24)	28 (8.24)
59	JD(U)	155 (40.05)	IND (SKS)	64 (16.54)	91 (23.51)	RJD	48 (12.4)	120 (31.01)
60	IND (SKS)	141 (27.92)	JMM	91 (18.02)	50 (9.9)	BSP	84 (16.63)	189 (37.43)
61	JD(U)	186 (51.24)	LJP	86 (23.69)	100 (27.55)	IND (SKS)	43 (11.85)	48 (13.22)
61A	IND (SKS)	122 (43.88)	JD(U)	73 (26.26)	49 (17.62)	LJP	62 (22.3)	21 (7.55)
62	LJP	129 (32.09)	JD(U)	117 (29.1)	12 (2.99)	IND (SKS)	60 (14.93)	96 (23.88)
62A	RJD	154 (42.19)	IND (SKS)	120 (32.88)	34 (9.31)	LJP	35 (9.59)	56 (15.34)
63	LJP	106 (33.13)	JD(U)	74 (23.13)	32 (10)	RJD	71 (22.19)	69 (21.56)
63A	LJP	150 (43.6)	RJD	78 (22.67)	72 (20.93)	JD(U)	53 (15.41)	63 (18.31)
64	LJP	341 (57.31)	RJD	130 (21.85)	211 (35.46)	IND (SKS)	59 (9.92)	65 (10.92)
65	RJD	148 (46.54)	LJP	91 (28.62)	57 (17.92)	IND (SKS)	43 (13.52)	36 (11.32)
65A	LJP	270 (70.31)	RJD	69 (17.97)	201 (52.34)	IND (SKS)	17 (4.43)	28 (7.29)
66	LJP	169 (44.71)	JD(U)	84 (22.22)	85 (22.49)	IND (SKS)	35 (9.26)	90 (23.81)
66A	LJP	172 (48.45)	JD(U)	126 (35.49)	46 (12.96)	RJD	12 (3.38)	45 (12.68)
67	RJD	118 (37.58)	JD(U)	70 (22.29)	48 (15.29)	IND (SKS)	53 (16.88)	73 (23.25)
67A	RJD	242 (55.5)	IND (SKS)	104 (23.85)	138 (31.65)	JD(U)	32 (7.34)	58 (13.3)
68	RJD	163 (51.58)	IND (SKS)	98 (31.01)	65 (20.57)	LJP	16 (5.06)	39 (12.34)
68A	RJD	166 (58.04)	IND (SKS)	59 (20.63)	107 (37.41)	BSP	20 (6.99)	41 (14.34)
69	IND (SKS)	203 (29)	RJD	198 (28.29)	5 (0.71)	JD(U)	131 (18.71)	168 (24)

Contd....

Socio-Economic Amenities - Rural

Access to Education Facilities

Particulars	Number of Villages (% of Population)				
	Available	Not Available	If Not Available (Distance of Nearest Facility)		
			A	B	C
Govt. Primary School	319 (70)	423 (30)	72 (5)	344 (24)	1 (0)
Private Primary School	43 (10)	699 (90)	0 (0)	0 (0)	0 (0)
Govt. Middle School	128 (35)	614 (65)	309 (27)	179 (21)	106 (15)
Private Middle School	16 (7)	726 (93)	0 (0)	6 (0)	11 (1)
Govt. Secondary School	13 (5)	729 (95)	40 (5)	241 (34)	446 (55)
Private Secondary School	5 (2)	737 (98)	0 (0)	0 (0)	0 (0)
Govt. Senior Secondary School	8 (4)	734 (96)	12 (3)	55 (9)	667 (84)
Private Senior Secondary School	1 (0)	741 (100)	0 (0)	0 (0)	0 (0)
Govt. Arts and Science Degree College	2 (0)	740 (100)	13 (3)	22 (3)	699 (94)
Private Arts and Science Degree College	2 (0)	740 (100)	0 (0)	0 (0)	6 (0)
Govt. Engineering College	0 (0)	742 (100)	0 (0)	0 (0)	0 (0)
Private Engineering College	0 (0)	742 (100)	0 (0)	0 (0)	742 (100)
Govt. Medicine College	0 (0)	742 (100)	0 (0)	0 (0)	742 (100)
Private Medicine College	0 (0)	742 (100)	0 (0)	0 (0)	0 (0)
Govt. Management Institute	0 (0)	742 (100)	0 (0)	0 (0)	742 (100)
Private Management Institute	0 (0)	742 (100)	0 (0)	0 (0)	0 (0)
Govt. Polytechnic	0 (0)	742 (100)	0 (0)	0 (0)	742 (100)
Private Polytechnic	0 (0)	742 (100)	0 (0)	0 (0)	0 (0)
Govt. Vocational Training School/ITI	0 (0)	742 (100)	0 (0)	0 (0)	742 (100)
Private Vocational Training School/ITI	0 (0)	742 (100)	0 (0)	0 (0)	0 (0)
Govt. Non Formal Training Centre	0 (0)	742 (100)	0 (0)	0 (0)	742 (100)
Private Non Formal Training Centre	0 (0)	742 (100)	0 (0)	0 (0)	0 (0)
Govt. School For Disabled	0 (0)	742 (100)	0 (0)	0 (0)	742 (100)
Private School For Disabled	0 (0)	742 (100)	0 (0)	0 (0)	0 (0)
Government Others	0 (0)	742 (100)	0 (0)	0 (0)	742 (100)
Private Others	0 (0)	742 (100)	0 (0)	0 (0)	0 (0)

Note : Distance A : Less than 5 km; B : Between 5-10 km; C : 10+ km.; Source : Data Analysis is based on 2011 Census.

DISCLAIMER

The Terms of Use and Disclaimer of Datanet India Private Limited (hereinafter referred to as "Datanet") for use of this analysis report of **Chakai Assembly Constituency (Chakai Vidhan Sabha)** :-

1. **Assembly Factbook™** is a Registered Trade Mark owned by Datanet.
2. All the maps are sketched and graphical representation only and have not been drawn to the scale and also not to represent the actual geographical area or boundary of the unit.
3. The data for the aforesaid analysis is based on authentic sources and has been culled from the various publications of Census, CSO and NSSO for district and block level data, various central and state government departments, Central & State Elections Commissions and the concerned Returning Officers' releases, Electoral Rolls, Election results and allied publications, internal assessment, surveys, estimates and analysis. Therefore, certain adjustment of data at micro level may have been done to arrive closer to the macro data.
4. Data have been provided on an "As Is" and "As AVAILABLE" basis
5. The colours shown in the maps or diagram and charts of a particular party, alliance or AC are indicative and do not represent them.
6. This publication which includes maps, sheets, graphs and data would be the property under copyright of Datanet only. The user may use these for its internal study, analysis and research purposes. It's public display, re-selling or any commercial uses by the user are not allowed.
7. Datanet has taken due care and caution in compilation and processing of data and allied information, but does not guarantee the accuracy, adequacy or completeness of any information/analysis and will be not responsible for any errors or omissions or for the results obtained from the use of such information/analysis.
8. All the contents for the publication have been culled from various authentic sources and Datanet reasonably believes such sources to be reliable, but does not make any representations, express or implied as to the accuracy or fitness of use of such information. The information or contents of the information/analysis do not constitute advice and should not be relied upon in making (or refraining from making) any decision. Any reliance placed upon the information provided by Datanet is the sole responsibility and strictly at the user's risk.
9. In no event will Datanet be liable for any damages (including, without limitation, damages for loss of business projects, or loss of profits) arising in contract, tort or otherwise from the use of or inability to use any of its contents, or from any action taken (or refrained from being taken) as a result of using the analysis or any of its contents. Datanet its directors, owners, editors, officials, employees, distributor and agents or any associate will not be liable for any errors in the information contained or any consequences arising from the use of the contents of the provided information/analysis.
10. If any provision of these terms and conditions is held invalid or illegal or unenforceable for any reason by any court of competent jurisdiction, such provision shall be severed and the remainder of provisions of the terms and conditions shall continue in full force and effect as if the Term of Use had been executed with the invalid, illegal or unenforceable provision eliminated.
11. If there are any discrepancies in the information provided, please bring it to attention of Datanet for suitable rectification measures.

Buy Online This Complete Book At
Indiastat Publication Book Store

www.indiastatpublications.com

or go directly at

[http://www.indiastatpublications.com/
Assembly_factbook/Bihar/Jamui/ Chakai](http://www.indiastatpublications.com/Assembly_factbook/Bihar/Jamui/Chakai)

 **indiastat**elections

ISBN : 978-93-5313-064-0

