



Bihar

Assembly Factbook™

Tarapur Assembly Constituency



Key Electoral Data of Tarapur
Assembly Constituency (Vidhan Sabha)

Bihar

Assembly Factbook™

Tarapur Assembly Constituency



Tarapur Vidhan Sabha

Editor & Director

Dr. R.K. Thukral

Research Editor

Dr. Shafeeq Rahman

Compiled, Researched and Published by Datanet India Pvt. Ltd.

D-100, 1st Floor,

Okhla Industrial Area, Phase-I,
New Delhi- 110020.

Ph.: 91-11- 43580781-84

Email : support@indiastatpublications.com

Website : www.indiastatelections.com

Online Book Store :

www.indiastatpublications.com

Report No. : AFB/BR-164-0123

ISBN : 978-93-5313-197-5

First Edition : January, 2018

Sixth Updated Edition : January, 2023

Price : Rs. 11500/-

US\$ 310

© Datanet India Pvt. Ltd.

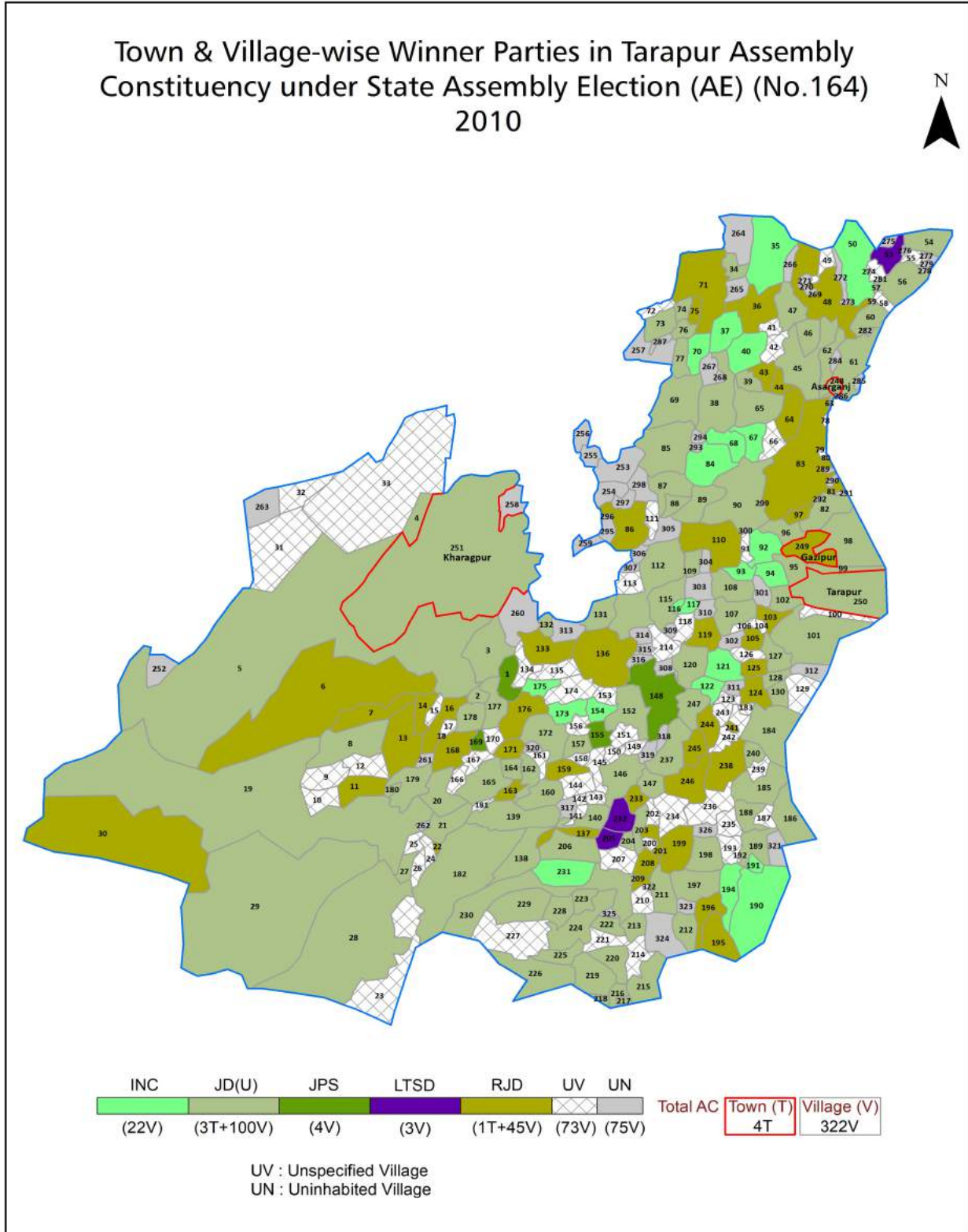
All rights reserved. No part of this book may be reproduced, stored in a retrieval system or transmitted in any form or by any means, mechanical photocopying, photographing, scanning, recording or otherwise without the prior written permission of the publisher. Please refer to Disclaimer at page no. 225 for the use of this publication.

Printed in India

No.	Particulars	Page No.
	Introduction	
1	Assembly Constituency - (Vidhan Sabha) at a Glance Features of Assembly as per Delimitation Commission of India (2008)	1-2
	Location and Political Maps	
2	Location Map Boundaries of Assembly Constituency - (Vidhan Sabha) in District Boundaries of Assembly Constituency under Parliamentary Constituency - (Lok Sabha) Town & Village-wise Winner Parties- 2019, 2015, 2014, 2010 and 2009	3-11
	Administrative Setup (2011)	
3	District Sub-district Towns Villages Inhabited Villages Uninhabited Villages Village Panchayat Intermediate Panchayat	11-23
	Demographics (2011)	
4	Population Households Rural/Urban Population Towns and Villages by Population Size Sex Ratio (Total & 0-6 Years) Religious Population Social Population Literacy Rate	24-25
	Electoral Features	
5	Important Dates of Last Elections Held Electors by Gender Service Electors Voters Voters Turnout Polling Stations & Average Number of Electors per Polling Station Electors by Age Group Present Elected Representatives	26-31
	Historical Summary Election Results	
6	Vote Share of Major Parties Winning Margin (Number & Percentage) Polarity of Parties Summary Result of Assembly Segment of Parliamentary Elections 2019, 2014, 2009, 2004 and 1999 Summary Result of Assembly Elections 2020, 2015, 2010, 2005 (Oct), 2005 (Feb), 2000, 1995, 1990, 1985, 1980, 1977, 1972, 1969, 1967, 1962, 1957 and 1952	32-57
	Polling Station Level Election Results	
7	Name and Number of Polling Station 2019, 2015, 2014, 2010 and 2009 Polling Station-wise Electors, Voters & Voters Turnout 2019, 2015, 2014, 2010 and 2009 Polling Station wise Elections Results 2019, 2015, 2014, 2010 and 2009	58-205
	Share of Assembly Constituency	
8	Share of Assembly Constituency - (Vidhan Sabha) in State, District and Parliamentary Constituency - (Lok Sabha)	206
	Socio-Economic Amenities (2011)	
9	Access to Administrative Units Agricultural, Manufacturing and Industrial Commodities Demographic Indicators Education Health & Manpower Drinking Water Supply Sanitation Entertainment and Recreations Infrastructure Power Food Allocation Distribution and Marketing of Agriculture Commodities Infrastructure Transport and Road Infrastructure Communication Banking and Financial Services Land Use Irrigation Source	208-221
10	Abbreviation & Sources	222-224
11	Disclaimer	225

Location & Political Map

Town & Village-wise Winner Parties in Tarapur Assembly Constituency under State Assembly Election (AE) (No.164) 2010



Administrative Setup

List of Village Panchayat & Intermediate Panchayat (Block) Name - 2011

Village Name	Village Panchayat Name	Intermediate Panchayat Name
Adras	Makwa	Asarganj
Afzalnagar	Afjalnagar	Tarapur
Ahmadpur	Makwa	Asarganj
Aliganj	Didarganj	Sangrampur
Amaia	Jorahi	Asarganj
Amdaha Kalan	Majhagai	Kharagpur
Amdaha Khurd	Majhagai	Kharagpur
Araunga	Dhowai	Tarapur
Auraiya	Gagata	Kharagpur
Babhan Chakka	Baliya	Sangrampur
Badarkha	Jorahi	Asarganj
Baijalpur	Amaiya	Asarganj
Balia	Baliya	Sangrampur
Bambor	Tetia	Tetiha Bambor
Banauli	Dhouri	Tetiha Bambor
Bangaon	Makwa	Asarganj
Bangawan	Bangama	Tetiha Bambor
Bardghatta	Bhuna	Tetiha Bambor
Bardiha	Dhouri	Tetiha Bambor
Barhaunian	Badhaunia	Sangrampur
Barsunda	Kesoulee	Tetiha Bambor
Batsar	Badhaunia	Sangrampur
Bejham	Didarganj	Sangrampur
Beladih	Baladih	Tarapur
Belbihma	Baladih	Tarapur
Belsara	Amaiya	Asarganj
Berain	Jorahi	Asarganj
Bhagalpura	Khaira	Tarapur
Bhagwanpur	Gagata	Kharagpur

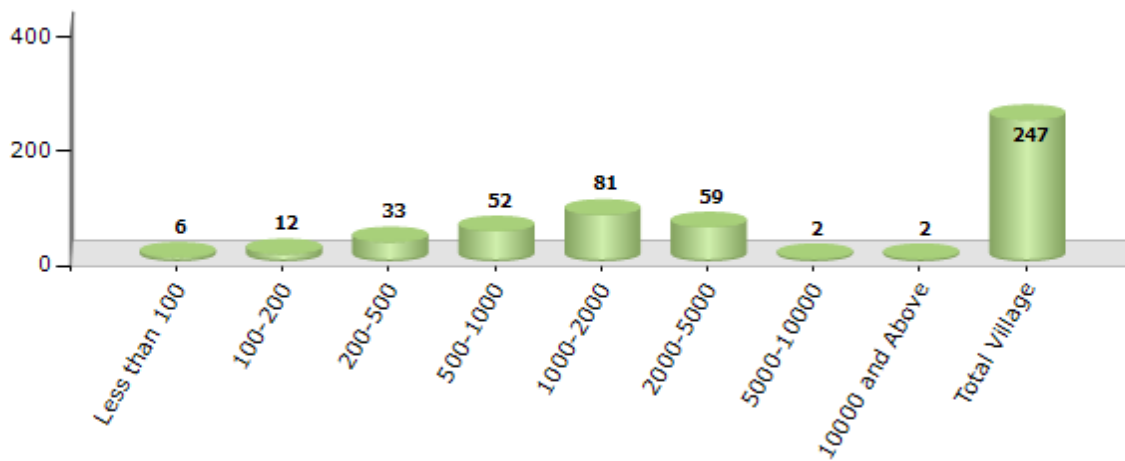
Contd....

Demographics

Number of Villages by Population Size - 2011

Less than 100	100-200	200-500	500-1000	1000-2000	2000-5000	5000-10000	10000 and Above	Total Village
6	12	33	52	81	59	2	2	247

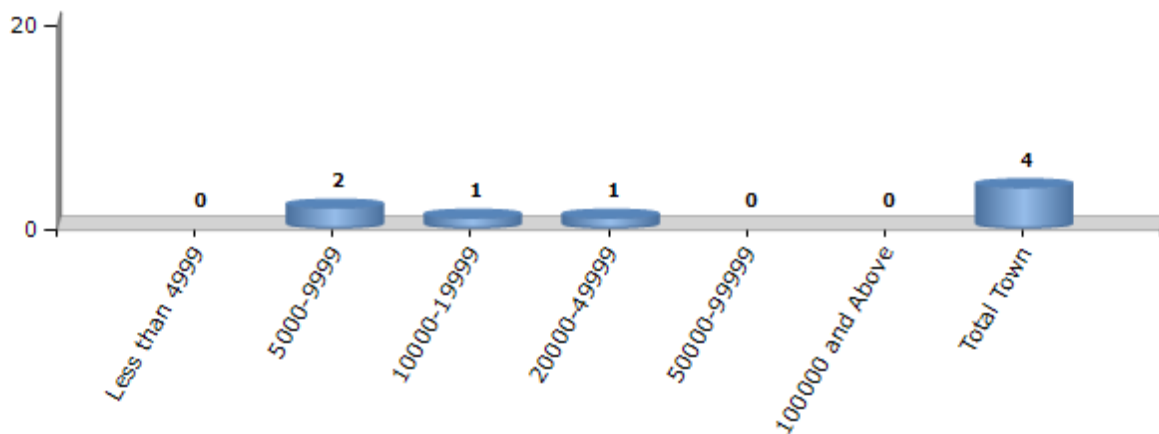
Number of Villages by Population Size - 2011



Number of Towns by Population Size - 2011

Less than 4999	5000-9999	10000-19999	20000-49999	50000-99999	100000 and Above	Total Town
0	2	1	1	0	0	4

Number of Towns by Population Size - 2011

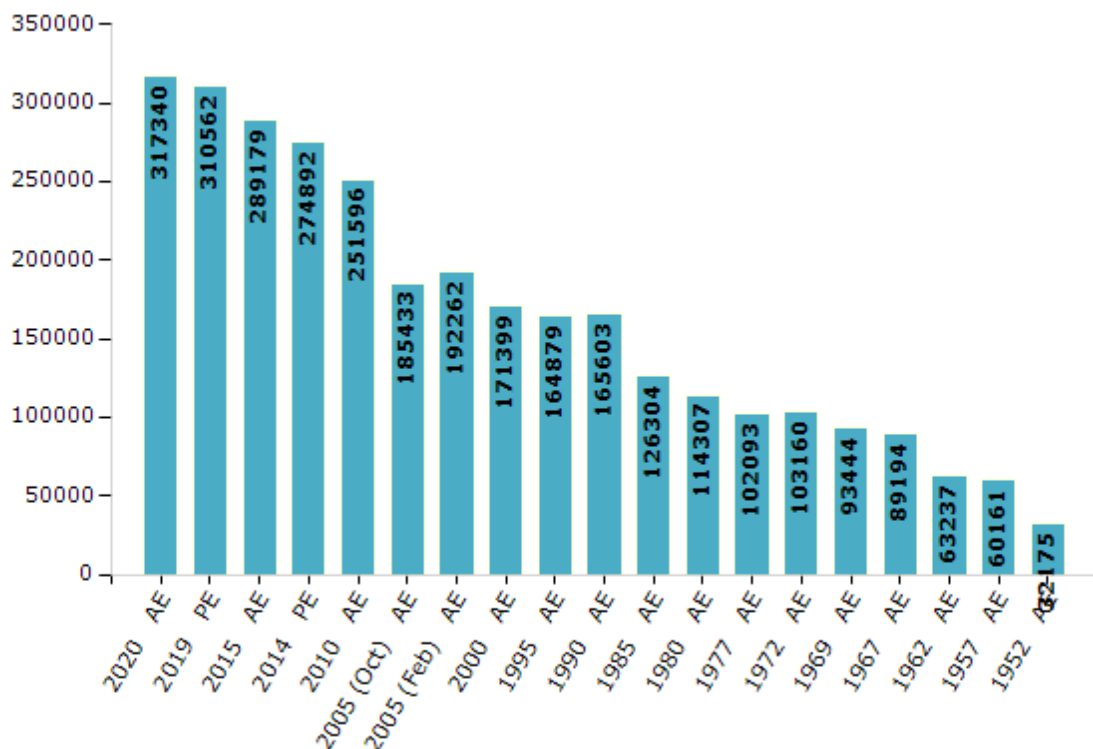


Electoral Features

Electors by Male & Female

Year	Male	Female	Others	Total	Year	Male	Female	Others	Total
2020 AE	171393	145939	8	317340	1995 AE	87007	77872	-	164879
2019 PE	167736	142817	9	310562	1990 AE	110398	55205	-	165603
2015 AE	155970	133200	9	289179	1985 AE	67866	58438	-	126304
2014 PE	147781	127106	5	274892	1980 AE	60984	53323	-	114307
2010 AE	136732	114864	0	251596	1977 AE	58446	43647	-	102093
2009 PE	-	-	-	-	1972 AE	56413	46747	-	103160
2005 (Oct) AE	100185	85248	-	185433	1969 AE	48998	44446	-	93444
2005 (Feb) AE	103746	88516	-	192262	1967 AE	-	-	-	89194
2004 PE	-	-	-	-	1962 AE	-	-	-	63237
2000 AE	91032	80367	-	171399	1957 AE	-	-	-	60161
1999 PE	-	-	-	-	1952 AE	-	-	-	32175

Number of Electors



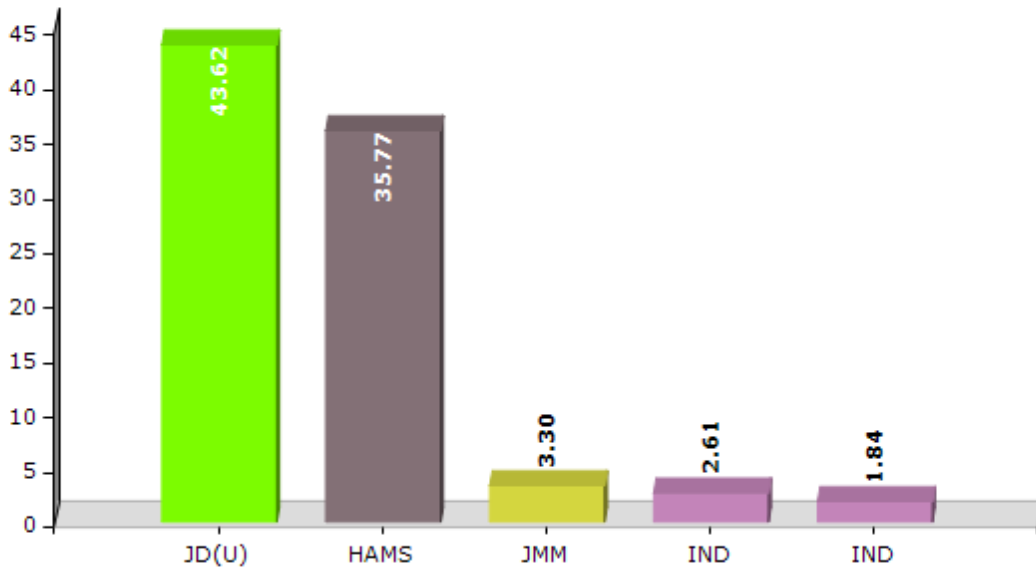
Note : AE : Assembly Election, PE : Assembly Segment of Parliamentary Election

Historical Summary Election Results

Summary Result of Assembly Election - 2015

Candidate Name	Party	Votes	Votes %
M L Choudhary	JD(U)	66411	43.62
Sakuni Choudhary	HAMS	54464	35.77
Sanjay Kumar	JMM	5017	3.3
Karmvir Kumar Bharati	IND	3971	2.61
Anil Kumar Singh	IND	2797	1.84
Gopal Krishna Barma	SHS	2494	1.64
Sagar Suman Singh	CPI	2411	1.58
Vijay Kumar Singh	RSMD	2371	1.56
Ram Prasad Sah	AAHPTY	1809	1.19
Anita Devi	JAPL	1567	1.03
Krishnadeo Sah	SUCI	1278	0.84
Amareshwar Kumar	IND	1145	0.75
Sita Ram Das	BSP	949	0.62
	NOTA	5565	3.66

Votes Percentage of Top Parties - 2015



Polling Station Level Election Results

Number and Name of Polling Stations (PS) (2015)

Number of Polling Stations	Name of Polling Stations	Number of Polling Stations	Name of Polling Stations
1	Urdu Prathamik Vidyalay Goraho	21	Shri Pathik Madhya Vidyalay Makava (Pa0 Bhag)
2	Madhay Vidyalay Chakhand	22	Madhya Vidyalay Milik Jorari
3	Madhya Vidyalay Amaiya	23	Urdu Prathmik Vidyalay Bangama
3A	Madhya Vidyalay Amaiya	24	Madhya Vidyalay Dhol Pahadi
4	Middle School Vidyalay Baijalapur	25	Madhya Vidyalay Purushottampur (D0 Bhag)
5	Madhya Vidyalay Sangramapur	26	Madhya Vidyalay Purushottampur (Ua0 Bhag)
6	Madhya Vidyalay Dulahar	27	Lal Bahadur Shastri Uchcha Vidyalay Mamai
7	Prathamik Vidyalay Mangarapapa (Badi)	28	Madhya Vidyalay Lagma
8	Urdu Prathamik Vidyalay Bhathedi	29	Madhya Vidyalay Machhidih
9	Madhya Vidyalay Berony	30	Naya Prathamik Vidyalay Anusuchit Sajua
10	Madhya Vidyalay Badarakha	31	Madhya Vidyalaya Sarvoday Sajua (East Part)
11	Madhya Vidyalay Mirjapur	32	Madhya Vidyalaya Sarvoday Sajua (West Part)
12	Urdu Prathamik Vidyalay Madarapur	33	Madhya Vidyalaya Badi Koriyan (North Part)
13	Urdu Madhya Vidyalay Vishanapur	34	Madhya Vidyalaya Badi Koriyan (South Part)
14	Prathamik Vidyalay Asha Joari	35	Prathmik Vidyalaya Masumganj
15	Madhya Vidyalay Panasany	36	Madhya Vidyalaya Sajua Satisthan
16	Madhya vidyalay Adras	37	Prathmik Vidyalaya Kamrain
17	Prathamik Vidyalay Vikramapur	38	Prathmik Vidyalaya Madhopur
18	Madhya Vidyalay Dhuriya	39	Madhya Vidyalaya Sadpur
19	Prathamik Vidyalay Saraun	40	Madhya Vidyalaya Chafa
20	Shri Pathik Madhya Vidyalay Makava (Pu0 Bhag)	41	R. N. P. Uchcha Vidyalaya Jalalabad

Contd....

Polling Station Level Election Results

Polling Station-wise Votes Secured by Overall Top Five Parties in Tarapur Assembly in Assembly Election (AE) under Jamui Parliamentary Constituency in Bihar (2015)

Number of Polling Station	Winner - M L Choudhary (JD(U))	Runner-up - Sakuni Choudhary (HAMS)	3rd - Sanjay Kumar (JMM)	4th - Karmvir Kumar Bharati (IND)	5th - Anil Kumar Singh (IND)	NOTA	Other	Total Votes Secured
35	164	262	5	9	1	6	75	522
36	211	46	7	2	3	7	12	288
37	183	301	21	9	82	23	58	677
38	98	79	0	1	22	11	4	215
39	360	199	13	7	7	16	69	671
40	277	238	15	16	10	38	69	663
41	269	383	20	11	14	27	47	771
42	239	285	3	3	7	9	36	582
43	191	283	33	5	5	19	43	579
44	137	300	123	9	10	7	36	622
45	198	195	9	1	7	2	9	421
46	236	400	39	10	17	7	45	754
47	128	260	21	12	12	20	42	495
47A	189	200	9	9	13	1	64	485
48	NV	NV	NV	NV	NV	NV	NV	NV
49	228	152	4	6	14	38	57	499
50	275	392	18	9	5	33	97	829
50A	56	75	2	0	0	2	4	139
51	81	169	2	1	5	4	30	292
52	68	165	7	5	49	20	37	351
53	404	224	7	6	4	13	33	691
54	786	21	4	2	0	4	7	824
55	72	240	6	0	17	5	13	353
56	306	343	21	11	3	22	64	770
57	173	133	3	4	2	15	20	350
58	452	90	8	11	14	29	55	659
59	54	128	5	0	215	2	11	415
60	200	389	9	9	5	27	63	702
60A	97	164	7	7	4	22	21	322
61	64	771	10	4	1	12	39	901
62	303	93	3	8	1	27	24	459
63	306	102	2	3	1	9	23	446
64	699	113	6	3	9	36	35	901
65	384	2	0	0	2	4	8	400
66	371	5	2	2	7	12	20	419

Contd....

Polling Station Level Election Results

Winner, Runner-up and 3rd Party Position & Winning Margin According to Polling Stations in Tarapur Assembly in Assembly Election (AE) under Jamui Parliamentary Constituency in Bihar (2015)

Polling Station Number	Winner Party	Winner Votes (%)	Runner-up Party	Runner-up Votes (%)	Winning Margin Votes (%)	Third Party	Third Party Votes (%)	Other Votes (%)
67	HAMS	379 (64.46)	JD(U)	140 (23.81)	239 (40.65)	IND (KKB)	11 (1.87)	58 (9.86)
68	JD(U)	421 (88.63)	HAMS	17 (3.58)	404 (85.05)	SHS	6 (1.26)	31 (6.53)
69	JD(U)	412 (90.15)	CPI	10 (2.19)	402 (87.96)	HAMS	7 (1.53)	28 (6.13)
70	JD(U)	198 (44.59)	HAMS	193 (43.47)	5 (1.12)	SHS	11 (2.48)	42 (9.46)
70A	JD(U)	307 (79.33)	HAMS	37 (9.56)	270 (69.77)	SHS	10 (2.58)	33 (8.53)
71	HAMS	293 (56.67)	JD(U)	183 (35.4)	110 (21.27)	SHS	8 (1.55)	33 (6.38)
72	HAMS	355 (48.23)	JD(U)	251 (34.1)	104 (14.13)	SHS	22 (2.99)	108 (14.67)
73	HAMS	302 (42)	JD(U)	250 (34.77)	52 (7.23)	SHS	19 (2.64)	148 (20.58)
74	JD(U)	427 (54.05)	HAMS	210 (26.58)	217 (27.47)	BSP	16 (2.03)	137 (17.34)
75	JD(U)	385 (50.26)	HAMS	308 (40.21)	77 (10.05)	RSMD	13 (1.7)	60 (7.83)
76	HAMS	248 (63.43)	JD(U)	89 (22.76)	159 (40.67)	SHS	8 (2.05)	46 (11.76)
77	HAMS	300 (41.27)	JD(U)	299 (41.13)	1 (0.14)	BSP	35 (4.81)	93 (12.79)
78	HAMS	505 (69.18)	JD(U)	143 (19.59)	362 (49.59)	SHS	16 (2.19)	66 (9.04)
79	HAMS	448 (72.14)	JD(U)	101 (16.26)	347 (55.88)	SHS	13 (2.09)	59 (9.5)
79A	HAMS	219 (56.15)	JD(U)	94 (24.1)	125 (32.05)	AAHPTY	10 (2.56)	67 (17.18)
80	HAMS	271 (53.98)	JD(U)	150 (29.88)	121 (24.1)	SHS	15 (2.99)	66 (13.15)
80A	HAMS	214 (55.58)	JD(U)	136 (35.32)	78 (20.26)	SHS	11 (2.86)	24 (6.23)
81	HAMS	341 (48.37)	JD(U)	242 (34.33)	99 (14.04)	SHS	20 (2.84)	102 (14.47)
82	JD(U)	227 (44.16)	HAMS	208 (40.47)	19 (3.69)	SHS	10 (1.95)	69 (13.42)
83	JD(U)	380 (50.94)	HAMS	291 (39.01)	89 (11.93)	IND (KKB)	11 (1.47)	64 (8.58)
84	HAMS	199 (51.69)	JD(U)	105 (27.27)	94 (24.42)	SHS	14 (3.64)	67 (17.4)
85	HAMS	315 (47.87)	JD(U)	212 (32.22)	103 (15.65)	SHS	22 (3.34)	109 (16.57)
86	JD(U)	340 (45.7)	HAMS	288 (38.71)	52 (6.99)	IND (KKB)	18 (2.42)	98 (13.17)
87	HAMS	167 (66.53)	JD(U)	37 (14.74)	130 (51.79)	SHS	10 (3.98)	37 (14.74)
88	HAMS	260 (49.71)	JD(U)	160 (30.59)	100 (19.12)	JMM	28 (5.35)	75 (14.34)
89	JD(U)	394 (90.37)	HAMS	5 (1.15)	389 (89.22)	CPI	5 (1.15)	32 (7.34)
90	JD(U)	569 (76.17)	HAMS	64 (8.57)	505 (67.6)	JMM	54 (7.23)	60 (8.03)
91	JD(U)	426 (54.13)	HAMS	267 (33.93)	159 (20.2)	JMM	18 (2.29)	76 (9.66)
92	JD(U)	259 (53.18)	HAMS	164 (33.68)	95 (19.5)	SHS	10 (2.05)	54 (11.09)
93	HAMS	171 (64.77)	JD(U)	44 (16.67)	127 (48.1)	RSMD	12 (4.55)	37 (14.02)
94	HAMS	292 (51.32)	JD(U)	184 (32.34)	108 (18.98)	SHS	16 (2.81)	77 (13.53)
95	HAMS	237 (53.26)	JD(U)	153 (34.38)	84 (18.88)	SHS	19 (4.27)	36 (8.09)
96	HAMS	435 (57.16)	JD(U)	227 (29.83)	208 (27.33)	SHS	17 (2.23)	82 (10.78)
97	JD(U)	313 (42.07)	HAMS	313 (42.07)	0 (0)	SHS	21 (2.82)	97 (13.04)
98	HAMS	304 (50.58)	JD(U)	194 (32.28)	110 (18.3)	RSMD	16 (2.66)	87 (14.48)

Contd....

Socio-Economic Amenities - Rural

Access to Education Facilities

Particulars	Number of Villages (% of Population)				
	Available	Not Available	If Not Available (Distance of Nearest Facility)		
			A	B	C
Govt. Primary School	208 (96)	39 (4)	36 (3)	0 (0)	0 (0)
Private Primary School	27 (14)	220 (86)	1 (0)	0 (0)	0 (0)
Govt. Middle School	137 (78)	110 (22)	79 (18)	30 (4)	0 (0)
Private Middle School	9 (5)	238 (95)	0 (0)	0 (0)	0 (0)
Govt. Secondary School	41 (32)	206 (68)	72 (25)	93 (30)	33 (9)
Private Secondary School	6 (4)	241 (96)	6 (2)	0 (0)	0 (0)
Govt. Senior Secondary School	16 (12)	231 (88)	45 (20)	142 (54)	37 (12)
Private Senior Secondary School	3 (1)	244 (99)	0 (0)	4 (1)	1 (1)
Govt. Arts and Science Degree College	3 (1)	244 (99)	0 (0)	56 (24)	188 (74)
Private Arts and Science Degree College	0 (0)	247 (100)	0 (0)	0 (0)	0 (0)
Govt. Engineering College	0 (0)	247 (100)	0 (0)	0 (0)	0 (0)
Private Engineering College	0 (0)	247 (100)	0 (0)	0 (0)	247 (100)
Govt. Medicine College	0 (0)	247 (100)	0 (0)	0 (0)	247 (100)
Private Medicine College	0 (0)	247 (100)	0 (0)	0 (0)	0 (0)
Govt. Management Institute	0 (0)	247 (100)	0 (0)	0 (0)	247 (100)
Private Management Institute	0 (0)	247 (100)	0 (0)	0 (0)	0 (0)
Govt. Polytechnic	0 (0)	247 (100)	0 (0)	0 (0)	247 (100)
Private Polytechnic	0 (0)	247 (100)	0 (0)	0 (0)	0 (0)
Govt. Vocational Training School/ITI	0 (0)	247 (100)	0 (0)	0 (0)	197 (78)
Private Vocational Training School/ITI	2 (0)	245 (100)	0 (0)	2 (1)	46 (21)
Govt. Non Formal Training Centre	6 (3)	241 (97)	0 (0)	0 (0)	192 (75)
Private Non Formal Training Centre	3 (1)	244 (99)	0 (0)	2 (1)	45 (21)
Govt. School For Disabled	0 (0)	247 (100)	0 (0)	0 (0)	247 (100)
Private School For Disabled	0 (0)	247 (100)	0 (0)	0 (0)	0 (0)
Government Others	9 (3)	238 (97)	0 (0)	0 (0)	238 (97)
Private Others	0 (0)	247 (100)	0 (0)	0 (0)	0 (0)

Note : Distance A : Less than 5 km; B : Between 5-10 km; C : 10+ km.; Source : Data Analysis is based on 2011 Census.

DISCLAIMER

The Terms of Use and Disclaimer of Datanet India Private Limited (hereinafter referred to as "Datanet") for use of this analysis report of **Tarapur Assembly Constituency (Tarapur Vidhan Sabha) :-**

1. **Assembly Factbook™** is a Registered Trade Mark owned by Datanet.
2. All the maps are sketched and graphical representation only and have not been drawn to the scale and also not to represent the actual geographical area or boundary of the unit.
3. The data for the aforesaid analysis is based on authentic sources and has been culled from the various publications of Census, CSO and NSSO for district and block level data, various central and state government departments, Central & State Elections Commissions and the concerned Returning Officers' releases, Electoral Rolls, Election results and allied publications, internal assessment, surveys, estimates and analysis. Therefore, certain adjustment of data at micro level may have been done to arrive closer to the macro data.
4. Data have been provided on an "As Is" and "As AVAILABLE" basis
5. The colours shown in the maps or diagram and charts of a particular party, alliance or AC are indicative and do not represent them.
6. This publication which includes maps, sheets, graphs and data would be the property under copyright of Datanet only. The user may use these for its internal study, analysis and research purposes. It's public display, re-selling or any commercial uses by the user are not allowed.
7. Datanet has taken due care and caution in compilation and processing of data and allied information, but does not guarantee the accuracy, adequacy or completeness of any information/analysis and will be not responsible for any errors or omissions or for the results obtained from the use of such information/analysis.
8. All the contents for the publication have been culled from various authentic sources and Datanet reasonably believes such sources to be reliable, but does not make any representations, express or implied as to the accuracy or fitness of use of such information. The information or contents of the information/analysis do not constitute advice and should not be relied upon in making (or refraining from making) any decision. Any reliance placed upon the information provided by Datanet is the sole responsibility and strictly at the user's risk.
9. In no event will Datanet be liable for any damages (including, without limitation, damages for loss of business projects, or loss of profits) arising in contract, tort or otherwise from the use of or inability to use any of its contents, or from any action taken (or refrained from being taken) as a result of using the analysis or any of its contents. Datanet its directors, owners, editors, officials, employees, distributor and agents or any associate will not be liable for any errors in the information contained or any consequences arising from the use of the contents of the provided information/analysis.
10. If any provision of these terms and conditions is held invalid or illegal or unenforceable for any reason by any court of competent jurisdiction, such provision shall be severed and the remainder of provisions of the terms and conditions shall continue in full force and effect as if the Term of Use had been executed with the invalid, illegal or unenforceable provision eliminated.
11. If there are any discrepancies in the information provided, please bring it to attention of Datanet for suitable rectification measures.

**Buy Online This Complete Book At
Datanet India eBooks Store**

www.indiastatpublications.com

or go directly at

[http://www.indiastatpublications.com/
Assembly_factbook/Bihar/Jamui/ Tarapur](http://www.indiastatpublications.com/Assembly_factbook/Bihar/Jamui/Tarapur)

 **india**stat**elections**

ISBN : 978-93-5313-197-5

