



Bihar

Assembly Factbook™

Jhanjharpur Assembly Constituency



Key Electoral Data of Jhanjharpur
Assembly Constituency (Vidhan Sabha)

Bihar

Assembly Factbook™

Jhanjharpur Assembly Constituency



Jhanjharpur Vidhan Sabha

Editor & Director

Dr. R.K. Thukral

Research Editor

Dr. Shafeeq Rahman

Compiled, Researched and Published by Datanet India Pvt. Ltd.

D-100, 1st Floor,

Okhla Industrial Area, Phase-I,
New Delhi- 110020.

Ph.: 91-11- 43580781-84

Email : support@indiastatpublications.com

Website : www.indiastatelections.com

Online Book Store :

www.indiastatpublications.com

Report No. : AFB/BR-038-0125

ISBN : 978-93-5313-099-2

First Edition : January, 2018

Eighth Updated Edition : January, 2025

Price : Rs. 11500/-

US\$ 310

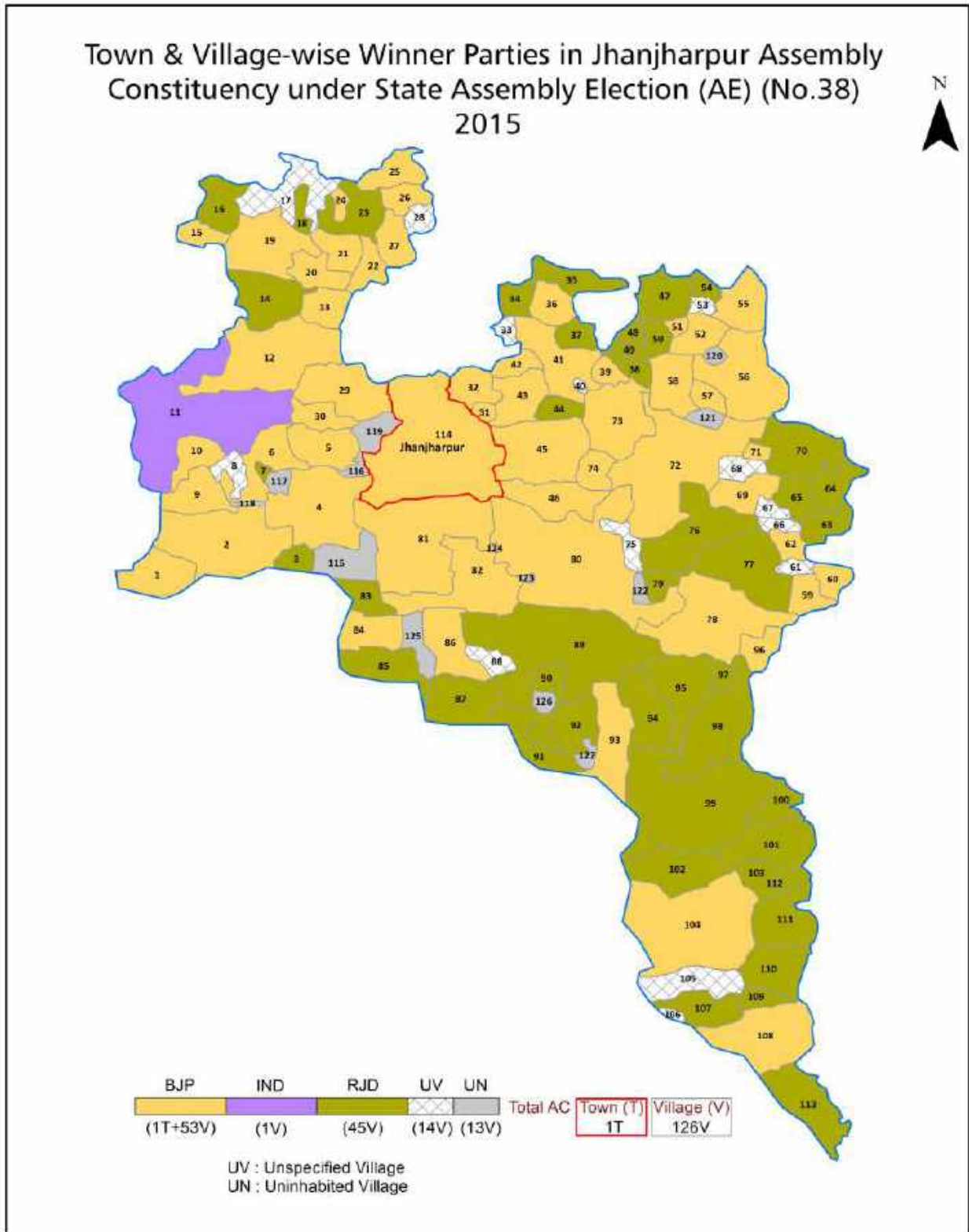
© Datanet India Pvt. Ltd.

All rights reserved. No part of this book may be reproduced, stored in a retrieval system or transmitted in any form or by any means, mechanical photocopying, photographing, scanning, recording or otherwise without the prior written permission of the publisher. Please refer to Disclaimer at page no. 257 for the use of this publication.

Printed in India

No.	Particulars	Page No.
	Introduction	
1	Assembly Constituency - (Vidhan Sabha) at a Glance Features of Assembly as per Delimitation Commission of India (2008)	1-2
	Location and Political Maps	
2	Location Map Boundaries of Assembly Constituency - (Vidhan Sabha) in District Boundaries of Assembly Constituency under Parliamentary Constituency - (Lok Sabha) Town & Village-wise Winner Parties- 2024, 2020, 2019, 2015, 2014, 2010 and 2009	3-11
	Administrative Setup (2011)	
3	District Sub-district Towns Villages Inhabited Villages Uninhabited Villages Village Panchayat Intermediate Panchayat	12-18
	Demographics (2011)	
4	Population Households Rural/Urban Population Towns and Villages by Population Size Sex Ratio (Total & 0-6 Years) Religious Population Social Population Literacy Rate	19-20
	Electoral Features	
5	Important Dates of Last Elections Held Electors by Gender Service Electors Voters Voters Turnout Polling Stations & Average Number of Electors per Polling Station Electors by Age Group Present Elected Representatives	21-26
	Historical Summary Election Results	
6	Vote Share of Major Parties Winning Margin (Number & Percentage) Polarity of Parties Summary Result of Assembly Segment of Parliamentary Elections 2024, 2019, 2014, 2009, 2004 and 1999 Summary Result of Assembly Elections 2020, 2015, 2010, 2005 (Oct), 2005 (Feb), 2000, 1995, 1990, 1985, 1980, 1977, 1972, 1969, 1967, 1962, 1957 and 1952	27-52
	Polling Station Level Election Results	
7	Name and Number of Polling Station 2024, 2020, 2019, 2015, 2014, 2010 and 2009 Polling Station-wise Electors, Voters & Voters Turnout 2024, 2020, 2019, 2015, 2014, 2010 and 2009 Polling Station wise Elections Results 2024, 2020, 2019, 2015, 2014, 2010 and 2009	53-236
	Share of Assembly Constituency	
8	Share of Assembly Constituency - (Vidhan Sabha) in State, District and Parliamentary Constituency - (Lok Sabha)	237
	Socio-Economic Amenities (2011)	
9	Access to Administrative Units Agricultural, Manufacturing and Industrial Commodities Demographic Indicators Education Health & Manpower Drinking Water Supply Sanitation Entertainment and Recreations Infrastructure Power Food Allocation Distribution and Marketing of Agriculture Commodities Infrastructure Transport and Road Infrastructure Communication Banking and Financial Services Land Use Irrigation Source	239-253
10	Abbreviation & Sources	254-256
11	Disclaimer	257

Location & Political Map



Administrative Setup

List of Village Panchayat & Intermediate Panchayat (Block) Name - 2011

Village Name	Village Panchayat Name	Intermediate Panchayat Name
Adit dih	Adit Dih	Madhepur
Amarupi	Amarupi	Lakhnaur
Ankusi	Ankusi	Lakhnaur
Az Rakbe Bhit Bhagwanpur	Az Rakbe Bhit Bhagwanpur	Madhepur
Az Rakbe Chaupta	Az Rakbe Chaupta	Jhunjharpur
Az Rakbe Sidhi Tajpur	Az Rakbe Sidhi Tajpur	Madhepur
Bahera	Bahera	Lakhnaur
Bahera	Bahera	Madhepur
Bali	Bali	Jhunjharpur
Balia	Balia	Lakhnaur
Balni Mehath	Balni Mehath	Jhunjharpur
Banaur	Banaur	Jhunjharpur
Banki	Banki	Madhepur
Baswa	Baswa	Lakhnaur
Behat	Behat	Lakhnaur
Belauncha	Belauncha	Lakhnaur
Berma	Berma	Lakhnaur
Bhakhrauli	Bhakhrauli	Lakhnaur
Bhit Bhagwanpur	Bhit Bhagwanpur	Madhepur
Biharpur	Biharpur	Lakhnaur
Bijulipur	Bijulipur	Lakhnaur
Birpur	Birpur	Madhepur
Birpur Burh	Birpur Burh	Madhepur
Bishunpatti	Bishunpatti	Lakhnaur
Bistaul	Bistaul	Jhunjharpur
Bodai	Bodai	Lakhnaur
Chanauraganj	Chanauraganj	Jhunjharpur
Chaupta	Chaupta	Jhunjharpur
Chora Mahrail	Chora Mahrail	Jhunjharpur

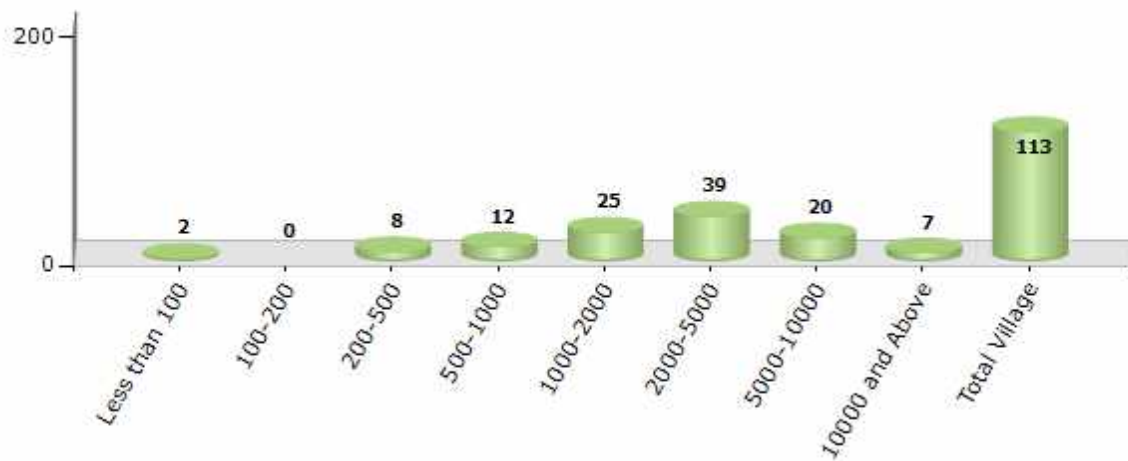
Contd....

Demographics

Number of Villages by Population Size - 2011

Less than 100	100-200	200-500	500-1000	1000-2000	2000-5000	5000-10000	10000 and Above	Total Village
2	0	8	12	25	39	20	7	113

Number of Villages by Population Size - 2011



Number of Towns by Population Size - 2011

Less than 4999	5000-9999	10000-19999	20000-49999	50000-99999	100000 and Above	Total Town
0	0	0	1	0	0	1

Number of Towns by Population Size - 2011

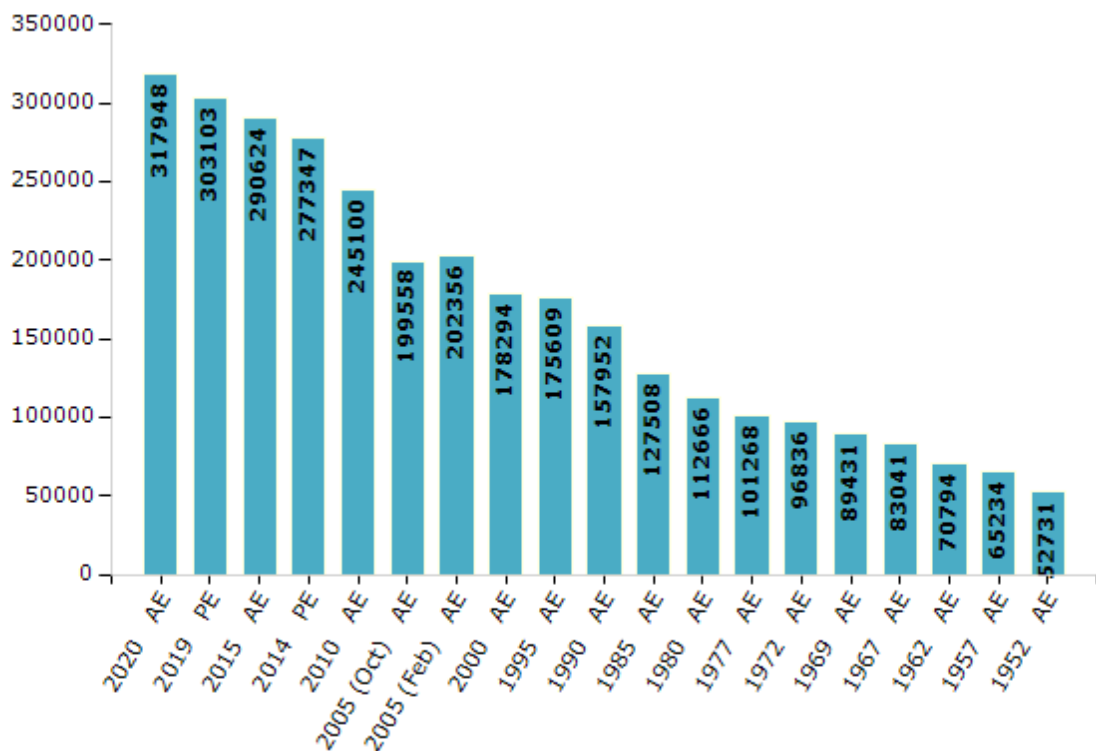


Electoral Features

Electors by Male & Female

Year	Male	Female	Others	Total	Year	Male	Female	Others	Total
2020 AE	166525	151416	7	317948	1995 AE	96394	79215	-	175609
2019 PE	159085	144010	8	303103	1990 AE	82539	75413	-	157952
2015 AE	153372	137246	6	290624	1985 AE	65804	61704	-	127508
2014 PE	147935	129412	0	277347	1980 AE	57764	54902	-	112666
2010 AE	130087	115013	0	245100	1977 AE	50943	50325	-	101268
2009 PE	-	-	-	-	1972 AE	48378	48458	-	96836
2005 (Oct) AE	106605	92953	-	199558	1969 AE	44398	45033	-	89431
2005 (Feb) AE	107650	94706	-	202356	1967 AE	-	-	-	83041
2004 PE	-	-	-	-	1962 AE	-	-	-	70794
2000 AE	95261	83033	-	178294	1957 AE	-	-	-	65234
1999 PE	-	-	-	-	1952 AE	-	-	-	52731

Number of Electors



Note : AE : Assembly Election, PE : Assembly Segment of Parliamentary Election

Historical Summary Election Results

Summary Result of Assembly Election - 2015

Candidate Name	Party	Votes	Votes %
Gulab Yadav	RJD	64320	40.73
Nitish Mishra	BJP	63486	40.2
Sunil Kumar Jha	IND	7022	4.45
Ram Narayan Yadav	CPI	4531	2.87
Sada Nand Suman	IND	4237	2.68
Om Prakash	IND	3309	2.1
Ram Narayan Mahto	IND	2639	1.67
Md. Hasnaian	IND	1593	1.01
Rajesh Kumar Jha	IND	1195	0.76
Mohammad Manjur Alam	IND	929	0.59
Awdesh Kumar Shing	IND	597	0.38
Ram Bharos Paswan	BSP	574	0.36
Ganapati Jha	SP	535	0.34
Mustafa Kamal	RSMD	435	0.28
Rajeev Kumar	AVIRP	423	0.27
Pawan Kumar Mishra	ABHM	380	0.24
Dhirendra Kumar Kamat	SJDD	348	0.22
Navin Kumar Ram	TNRMPI	317	0.2
	NOTA	1044	0.66

Polling Station Level Election Results

Number and Name of Polling Stations (PS) (2020)

Number of Polling Stations	Name of Polling Stations	Number of Polling Stations	Name of Polling Stations
1	Utkramit Madhya Vidyalay Jhaua Daya Bhag	14A	Uchcha Vidyalay, Santnagar Daya Bhag
1A	Utkramit Madhya Vidyalay Jhaua Daya Bhag	15	Uchcha Vidyalay Santnagar Baya Bhag
2	Utkramit Madhya Vidyalay, Jhaua Naya Bhawan	16	Prathamik Vidyalay, Khairashivotar Dom Tol
3	Naya Prathamik Vidyalay Teliya Pokhar Tadiya	17	Utkramit Madhya Vidyalay, Narayanapur Baya Bhag
4	Prathamik Vidyalay, Nirbhapur	18	Utkramit Madhya Vidyalay, Narayanapur Daya Bhag
4A	Prathamik Vidyalay, Nirbhapur	19	Madhay Vidyalay Navtol
5	Prathamik Vidyalay, Chaupata Baya Bhag	20	Utkramit Madhya Vidyalay, Shankarpur Daya Bhag
6	Prathamik Vidyalay Chaupta Daya Bhag	20A	Utkramit Madhya Vidyalay, Shankarpur Daya Bhag
7	Utkramit Madhya Vidyalay, Kako Daya Bhag	21	Madhay Vidyalay Balani Mehath Baya Bhag
8	Utkramit Madhya Vidyalay, Kako Baya Bhag	22	Madhay Vidyalay Balani Mehath Daya Bhag
9	Prathamik Vidyalay, Khaira Baya Bhag	23	Prathamik Vidyalay, Kachahari Tol, Mehath
9A	Prathamik Vidyalay, Khaira Baya Bhag	24	Chalant Matdan Kendra Khesara No. 96 Mauja Partapur
10	Utkramit Madhya Vidyalay, Ramakhetari Daya Bhag	25	Prathamik Vidyalay Gopalkha Ojhoul
10A	Utkramit Madhya Vidyalay, Ramakhetari Daya Bhag	26	Madhya Vidyalay, Kothiya Uttar Daya Bhag
11	Utkramit Madhya Vidyalay, Olipur Daya Bhag	26A	Madhya Vidyalay, Kothiya Uttar Daya Bhag
11A	Utkramit Madhya Vidyalay, Olipur Daya Bhag	27	Madhya Vidyalay, Kothiya Uttar Baya Bhag
12	Madhya Vidyalay, Imadpatti Daya Bhag	28	Madhya Vidyalay, Kothiya Pashchim
12A	Madhya Vidyalay, Imadpatti Daya Bhag	28A	Madhya Vidyalay, Kothiya Pashchim
13	Samudayik Bhavan, Banaur	29	Uchcha Vidyalay Bharam Daya Bhag
13A	Samudayik Bhavan, Banaur	29A	Uchcha Vidyalay Bharam Daya Bhag
14	Uchcha Vidyalay, Santnagar Daya Bhag	30	Prathamik Vidyalay, Bharaul Daya Bhag

Contd....

Polling Station Level Election Results

Polling Station-wise Votes Secured by Overall Top Five Parties in Jhunjharpur Assembly in Assembly Election (AE) under Jhunjharpur Parliamentary Constituency in Bihar (2020)

Number of Polling Station	Winner - Nitish Mishra (BJP)	Runner-up - Ram Narayan Yadav (CPI)	3rd - Ganga Prasad Gangotri (IND)	4th - Madan Kumar Mahto (IND)	5th - Birendra Kumar Choudhary (RLSP)	NOTA	Other	Total Votes Secured
26A	118	196	15	14	5	5	40	393
27	228	53	6	8	5	1	10	311
28	176	14	7	2	2	0	7	208
28A	215	41	2	4	2	1	5	270
29	204	108	0	12	4	2	16	346
29A	273	143	3	14	2	4	28	467
30	126	230	3	14	4	15	28	420
30A	141	55	1	4	1	4	18	224
31	104	291	1	8	5	6	12	427
32	205	170	4	20	2	1	34	436
32A	48	321	2	4	15	5	19	414
33	20	334	3	2	6	4	11	380
34	236	94	2	9	14	6	23	384
34A	233	99	4	12	4	3	30	385
35	268	18	6	25	7	1	38	363
36	114	43	0	6	16	1	6	186
36A	201	98	5	13	4	6	32	359
37	149	105	3	4	1	1	12	275
38	255	129	8	11	4	6	32	445
39	287	28	0	17	0	0	18	350
40	82	353	4	12	13	17	37	518
41	88	320	4	4	7	3	44	470
42	276	15	1	6	1	2	7	308
42A	293	16	1	5	1	0	18	334
43	318	71	1	14	3	2	29	438
44	231	19	0	7	0	0	19	276
45	226	104	1	16	10	6	43	406
46	137	251	0	14	11	7	29	449
47	276	38	2	7	2	2	20	347
47A	229	103	0	11	11	4	34	392
48	186	82	4	11	3	5	33	324
48A	329	27	0	14	1	1	7	379
49	228	100	3	10	3	5	27	376
49A	124	219	10	21	6	5	50	435
50	276	69	5	6	2	2	20	380

Contd....

Polling Station Level Election Results

Winner, Runner-up and 3rd Party Position & Winning Margin According to Polling Stations in Jhanjharpur Assembly in Assembly Election (AE) under Jhanjharpur Parliamentary Constituency in Bihar (2020)

Polling Station Number	Winner Party	Winner Votes (%)	Runner-up Party	Runner-up Votes (%)	Winning Margin Votes (%)	Third Party	Third Party Votes (%)	Other Votes (%)
51	BJP	307 (67.77)	CPI	65 (14.35)	242 (53.42)	IND (MKM)	35 (7.73)	46 (10.15)
52	BJP	263 (58.06)	CPI	121 (26.71)	142 (31.35)	IND (MKM)	15 (3.31)	54 (11.92)
52A	BJP	164 (58.99)	CPI	61 (21.94)	103 (37.05)	IND (MKM)	10 (3.6)	43 (15.47)
53	BJP	191 (83.41)	CPI	20 (8.73)	171 (74.68)	IND (BD)	11 (4.8)	7 (3.06)
54	BJP	113 (50.9)	CPI	38 (17.12)	75 (33.78)	IND (MKM)	28 (12.61)	43 (19.37)
54A	BJP	136 (60.44)	CPI	43 (19.11)	93 (41.33)	IND (MKM)	16 (7.11)	30 (13.33)
55	CPI	178 (39.56)	BJP	131 (29.11)	47 (10.45)	IND (MKM)	32 (7.11)	109 (24.22)
55A	BJP	169 (59.51)	CPI	58 (20.42)	111 (39.09)	JAPL	11 (3.87)	46 (16.2)
56	BJP	177 (68.08)	CPI	35 (13.46)	142 (54.62)	IND (MKM)	18 (6.92)	30 (11.54)
57	BJP	152 (56.51)	CPI	80 (29.74)	72 (26.77)	IND (MKM)	10 (3.72)	27 (10.04)
57A	BJP	147 (47.57)	CPI	61 (19.74)	86 (27.83)	IND (MKM)	38 (12.3)	63 (20.39)
58	BJP	179 (61.09)	CPI	65 (22.18)	114 (38.91)	IND (MKM)	20 (6.83)	29 (9.9)
58A	BJP	256 (72.11)	CPI	41 (11.55)	215 (60.56)	RLSP	29 (8.17)	29 (8.17)
59	BJP	265 (81.29)	CPI	29 (8.9)	236 (72.39)	IND (RKY)	6 (1.84)	26 (7.98)
59A	BJP	245 (57.92)	CPI	74 (17.49)	171 (40.43)	IND (BD)	36 (8.51)	68 (16.08)
60	BJP	317 (79.25)	CPI	24 (6)	293 (73.25)	IND (MKM)	17 (4.25)	42 (10.5)
60A	BJP	267 (77.62)	IND (MKM)	28 (8.14)	239 (69.48)	CPI	12 (3.49)	37 (10.76)
61	CPI	141 (59.24)	BJP	64 (26.89)	77 (32.35)	IND (GJ)	11 (4.62)	22 (9.24)
61A	BJP	191 (70.22)	CPI	61 (22.43)	130 (47.79)	IND (MKM)	8 (2.94)	12 (4.41)
62	BJP	145 (60.17)	CPI	57 (23.65)	88 (36.52)	IND (MKM)	13 (5.39)	26 (10.79)
62A	BJP	138 (55.2)	CPI	87 (34.8)	51 (20.4)	IND (MKM)	8 (3.2)	17 (6.8)
63	BJP	203 (91.44)	CPI	11 (4.95)	192 (86.49)	IND (MKM)	3 (1.35)	5 (2.25)
63A	BJP	206 (77.44)	CPI	29 (10.9)	177 (66.54)	IND (MKM)	10 (3.76)	21 (7.89)
64	BJP	246 (41.14)	CPI	233 (38.96)	13 (2.18)	IND (GJ)	31 (5.18)	88 (14.72)
65	BJP	219 (56.74)	CPI	86 (22.28)	133 (34.46)	IND (MKM)	33 (8.55)	48 (12.44)
65A	CPI	129 (43.29)	BJP	111 (37.25)	18 (6.04)	IND (MKM)	13 (4.36)	45 (15.1)
66	BJP	200 (81.63)	CPI	17 (6.94)	183 (74.69)	IND (MKM)	11 (4.49)	17 (6.94)
66A	BJP	254 (73.62)	CPI	71 (20.58)	183 (53.04)	IND (MKM)	7 (2.03)	13 (3.77)
67	BJP	240 (73.62)	CPI	54 (16.56)	186 (57.06)	RLSP	9 (2.76)	23 (7.06)
67A	BJP	254 (73.41)	CPI	36 (10.4)	218 (63.01)	IND (RKY)	20 (5.78)	36 (10.4)
68	BJP	443 (90.41)	CPI	22 (4.49)	421 (85.92)	IND (RKY)	7 (1.43)	18 (3.67)
69	BJP	189 (73.54)	RLSP	23 (8.95)	166 (64.59)	IND (MKM)	11 (4.28)	34 (13.23)
69A	BJP	210 (61.58)	CPI	29 (8.5)	181 (53.08)	IND (MKM)	23 (6.74)	79 (23.17)
70	BJP	149 (73.76)	CPI	20 (9.9)	129 (63.86)	IND (MKM)	12 (5.94)	21 (10.4)
70A	BJP	265 (75.71)	CPI	28 (8)	237 (67.71)	IND (MKM)	17 (4.86)	40 (11.43)

Contd....

Socio-Economic Amenities - Rural

Access to Education Facilities

Particulars	Number of Villages (% of Population)				
	Available	Not Available	If Not Available (Distance of Nearest Facility)		
			A	B	C
Govt. Primary School	106 (99)	7 (1)	4 (0)	0 (0)	0 (0)
Private Primary School	26 (27)	87 (73)	0 (0)	0 (0)	0 (0)
Govt. Middle School	57 (75)	56 (25)	38 (14)	6 (2)	1 (1)
Private Middle School	18 (28)	95 (72)	3 (2)	0 (0)	0 (0)
Govt. Secondary School	17 (29)	96 (71)	9 (6)	2 (3)	83 (59)
Private Secondary School	4 (8)	109 (92)	0 (0)	0 (0)	0 (0)
Govt. Senior Secondary School	9 (15)	104 (85)	3 (1)	50 (38)	50 (41)
Private Senior Secondary School	1 (5)	112 (95)	0 (0)	0 (0)	0 (0)
Govt. Arts and Science Degree College	1 (4)	112 (96)	9 (14)	19 (25)	44 (33)
Private Arts and Science Degree College	0 (0)	113 (100)	0 (0)	5 (2)	35 (23)
Govt. Engineering College	0 (0)	113 (100)	0 (0)	0 (0)	0 (0)
Private Engineering College	0 (0)	113 (100)	0 (0)	3 (7)	110 (93)
Govt. Medicine College	0 (0)	113 (100)	1 (1)	1 (4)	111 (95)
Private Medicine College	0 (0)	113 (100)	0 (0)	0 (0)	0 (0)
Govt. Management Institute	0 (0)	113 (100)	1 (1)	2 (5)	38 (47)
Private Management Institute	0 (0)	113 (100)	0 (0)	0 (0)	72 (48)
Govt. Polytechnic	0 (0)	113 (100)	1 (1)	3 (6)	108 (93)
Private Polytechnic	1 (0)	112 (100)	0 (0)	0 (0)	0 (0)
Govt. Vocational Training School/ITI	1 (0)	112 (100)	2 (1)	4 (5)	102 (84)
Private Vocational Training School/ITI	3 (6)	110 (94)	0 (0)	1 (4)	0 (0)
Govt. Non Formal Training Centre	1 (1)	112 (99)	1 (1)	3 (2)	102 (85)
Private Non Formal Training Centre	5 (7)	108 (93)	0 (0)	1 (4)	0 (0)
Govt. School For Disabled	1 (0)	112 (100)	1 (1)	1 (1)	107 (91)
Private School For Disabled	1 (1)	112 (99)	0 (0)	1 (4)	1 (2)
Government Others	1 (1)	112 (99)	2 (2)	1 (1)	22 (30)
Private Others	4 (4)	109 (96)	0 (0)	0 (0)	0 (0)

Note : Distance A : Less than 5 km; B : Between 5-10 km; C : 10+ km.; Source : Data Analysis is based on 2011 Census.

DISCLAIMER

The Terms of Use and Disclaimer of Datanet India Private Limited (hereinafter referred to as "Datanet") for use of this analysis report of **Jhanjharpur Assembly Constituency (Jhanjharpur Vidhan Sabha)** :-

1. **Assembly Factbook™** is a Registered Trade Mark owned by Datanet.
2. All the maps are sketched and graphical representation only and have not been drawn to the scale and also not to represent the actual geographical area or boundary of the unit.
3. The data for the aforesaid analysis is based on authentic sources and has been culled from the various publications of Census, CSO and NSSO for district and block level data, various central and state government departments, Central & State Elections Commissions and the concerned Returning Officers' releases, Electoral Rolls, Election results and allied publications, internal assessment, surveys, estimates and analysis. Therefore, certain adjustment of data at micro level may have been done to arrive closer to the macro data.
4. Data have been provided on an "As Is" and "As AVAILABLE" basis
5. The colours shown in the maps or diagram and charts of a particular party, alliance or AC are indicative and do not represent them.
6. This publication which includes maps, sheets, graphs and data would be the property under copyright of Datanet only. The user may use these for its internal study, analysis and research purposes. It's public display, re-selling or any commercial uses by the user are not allowed.
7. Datanet has taken due care and caution in compilation and processing of data and allied information, but does not guarantee the accuracy, adequacy or completeness of any information/analysis and will be not responsible for any errors or omissions or for the results obtained from the use of such information/analysis.
8. All the contents for the publication have been culled from various authentic sources and Datanet reasonably believes such sources to be reliable, but does not make any representations, express or implied as to the accuracy or fitness of use of such information. The information or contents of the information/analysis do not constitute advice and should not be relied upon in making (or refraining from making) any decision. Any reliance placed upon the information provided by Datanet is the sole responsibility and strictly at the user's risk.
9. In no event will Datanet be liable for any damages (including, without limitation, damages for loss of business projects, or loss of profits) arising in contract, tort or otherwise from the use of or inability to use any of its contents, or from any action taken (or refrained from being taken) as a result of using the analysis or any of its contents. Datanet its directors, owners, editors, officials, employees, distributor and agents or any associate will not be liable for any errors in the information contained or any consequences arising from the use of the contents of the provided information/analysis.
10. If any provision of these terms and conditions is held invalid or illegal or unenforceable for any reason by any court of competent jurisdiction, such provision shall be severed and the remainder of provisions of the terms and conditions shall continue in full force and effect as if the Term of Use had been executed with the invalid, illegal or unenforceable provision eliminated.
11. If there are any discrepancies in the information provided, please bring it to attention of Datanet for suitable rectification measures.

**Buy Online This Complete Book At
Datanet India eBooks Store**

www.indiastatpublications.com

or go directly at

[http://www.indiastatpublications.com/
Assembly_factbook/Bihar/Jhanjharpur/ Jhanjharpur](http://www.indiastatpublications.com/Assembly_factbook/Bihar/Jhanjharpur/Jhanjharpur)

 **india**stat**elections**

ISBN : 978-93-5313-099-2

