



Bihar

Assembly Factbook™

Khajauli Assembly Constituency



Key Electoral Data of Khajauli
Assembly Constituency (Vidhan Sabha)

Bihar

Assembly Factbook™

Khajauli Assembly Constituency



Khajauli Vidhan Sabha

Editor & Director

Dr. R.K. Thukral

Research Editor

Dr. Shafeeq Rahman

Compiled, Researched and Published by Datanet India Pvt. Ltd.

D-100, 1st Floor,

Okhla Industrial Area, Phase-I,
New Delhi- 110020.

Ph.: 91-11- 43580781-84

Email : support@indiastatpublications.com

Website : www.indiastatelections.com

Online Book Store :

www.indiastatpublications.com

Report No. : AFB/BR-033-0125

ISBN : 978-93-5313-111-1

First Edition : January, 2018

Eighth Updated Edition : January, 2025

Price : Rs. 11500/-

US\$ 310

© Datanet India Pvt. Ltd.

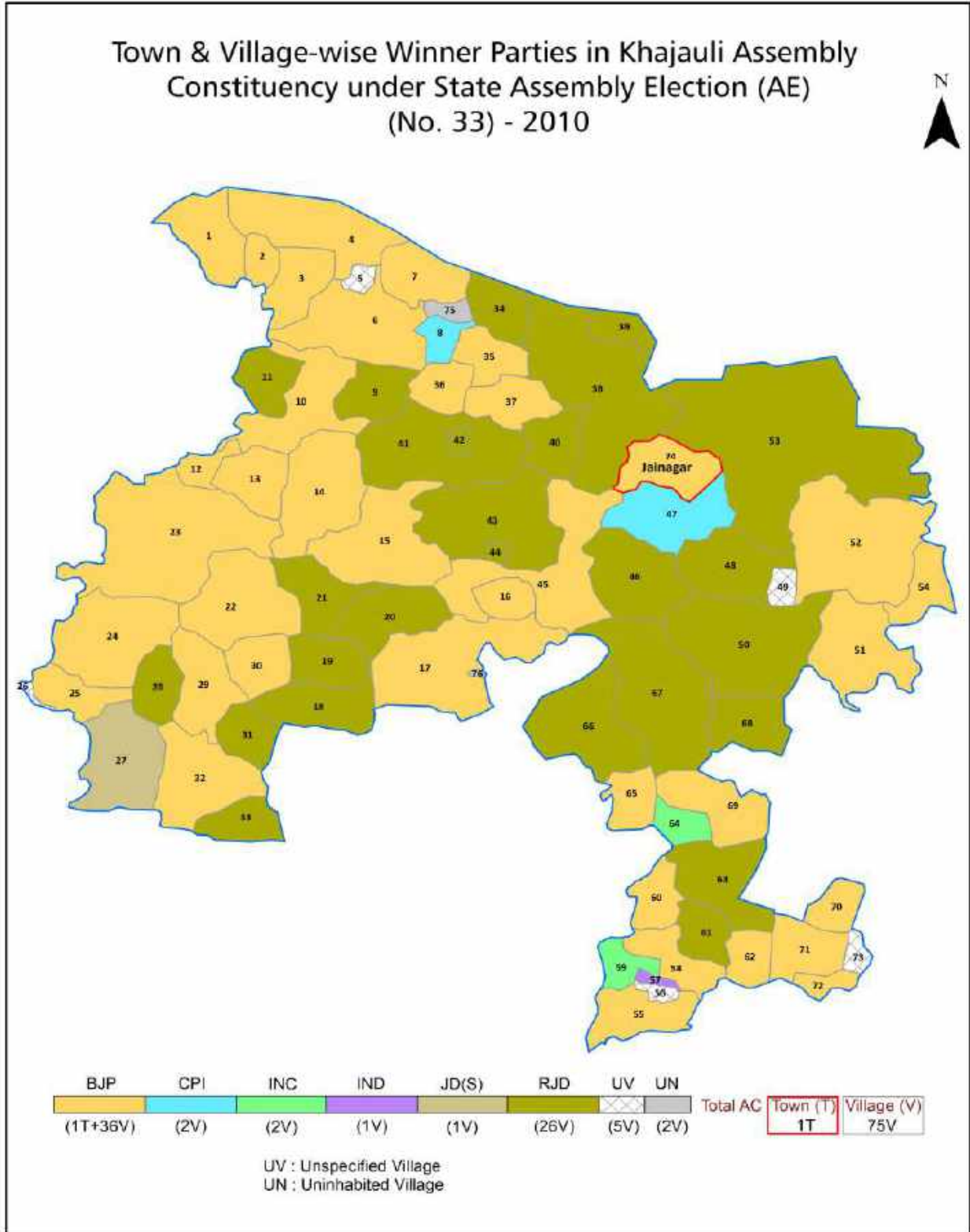
All rights reserved. No part of this book may be reproduced, stored in a retrieval system or transmitted in any form or by any means, mechanical photocopying, photographing, scanning, recording or otherwise without the prior written permission of the publisher. Please refer to Disclaimer at page no. 217 for the use of this publication.

Printed in India

Contents

No.	Particulars	Page No.
	Introduction	
1	Assembly Constituency - (Vidhan Sabha) at a Glance Features of Assembly as per Delimitation Commission of India (2008)	1-2
	Location and Political Maps	
2	Location Map Boundaries of Assembly Constituency - (Vidhan Sabha) in District Boundaries of Assembly Constituency under Parliamentary Constituency - (Lok Sabha) Town & Village-wise Winner Parties- 2024, 2020, 2019, 2014, 2010 and 2009	3-11
	Administrative Setup (2011)	
3	District Sub-district Towns Villages Inhabited Villages Uninhabited Villages Village Panchayat Intermediate Panchayat	11-15
	Demographics (2011)	
4	Population Households Rural/Urban Population Towns and Villages by Population Size Sex Ratio (Total & 0-6 Years) Religious Population Social Population Literacy Rate	16-17
	Electoral Features	
5	Important Dates of Last Elections Held Electors by Gender Service Electors Voters Voters Turnout Polling Stations & Average Number of Electors per Polling Station Electors by Age Group Present Elected Representatives	18-23
	Historical Summary Election Results	
6	Vote Share of Major Parties Winning Margin (Number & Percentage) Polarity of Parties Summary Result of Assembly Segment of Parliamentary Elections 2024, 2019, 2014, 2009, 2004 and 1999 Summary Result of Assembly Elections 2020, 2015, 2010, 2005 (Oct), 2005 (Feb), 2000, 1995, 1990, 1985, 1980, 1977, 1972, 1969, 1967, 1962, 1957 and 1952	24-49
	Polling Station Level Election Results	
7	Name and Number of Polling Station 2024, 2020, 2019, 2014, 2010 and 2009 Polling Station-wise Electors, Voters & Voters Turnout 2024, 2020, 2019, 2014, 2010 and 2009 Polling Station wise Elections Results 2024, 2020, 2019, 2014, 2010 and 2009	50-196
	Share of Assembly Constituency	
8	Share of Assembly Constituency - (Vidhan Sabha) in State, District and Parliamentary Constituency - (Lok Sabha)	197
	Socio-Economic Amenities (2011)	
9	Access to Administrative Units Agricultural, Manufacturing and Industrial Commodities Demographic Indicators Education Health & Manpower Drinking Water Supply Sanitation Entertainment and Recreations Infrastructure Power Food Allocation Distribution and Marketing of Agriculture Commodities Infrastructure Transport and Road Infrastructure Communication Banking and Financial Services Land Use Irrigation Source	199-213
10	Abbreviation & Sources	214-216
11	Disclaimer	217

Location & Political Map



Administrative Setup

List of Village Panchayat & Intermediate Panchayat (Block) Name - 2011

Village Name	Village Panchayat Name	Intermediate Panchayat Name
Akaspura	Akaspura	Khajauli
Arghawa	Arghawa	Basopatti
Baira	Baira	Jainagar
Barantpur	Barantpur	Basopatti
Barhi	Barhi	Jainagar
Barhmotar	Barhmotar	Jainagar
Barhmotar	Barhmotar	Khajauli
Basopatti	Basopatti	Basopatti
Belauna	Belauna	Basopatti
Belhi	Belhi	Jainagar
Beta Kakarghati	Beta Kakarghati	Khajauli
Bhadaur	Bhadaur	Jainagar
Bhaiapatti	Bhaiapatti	Basopatti
Biraul	Biraul	Khajauli
Birpur	Birpur	Basopatti
Chanan	Chanan	Basopatti
Chatar	Chatar	Jainagar
Chhitauni	Chhitauni	Basopatti
Damu	Damu	Basopatti
Darha	Darha	Khajauli
Datwar	Datwar	Khajauli
Dhamia Patti	Dhamia Patti	Jainagar
Dhoram	Dhoram	Khajauli
Dodwar	Dodwar	Jainagar
Garha	Garha	Jainagar
Ghorbanki	Ghorbanki	Basopatti
Hathapur	Hathapur	Basopatti
Indarwa	Indarwa	Jainagar
jainagar	Jainagar	Jainagar

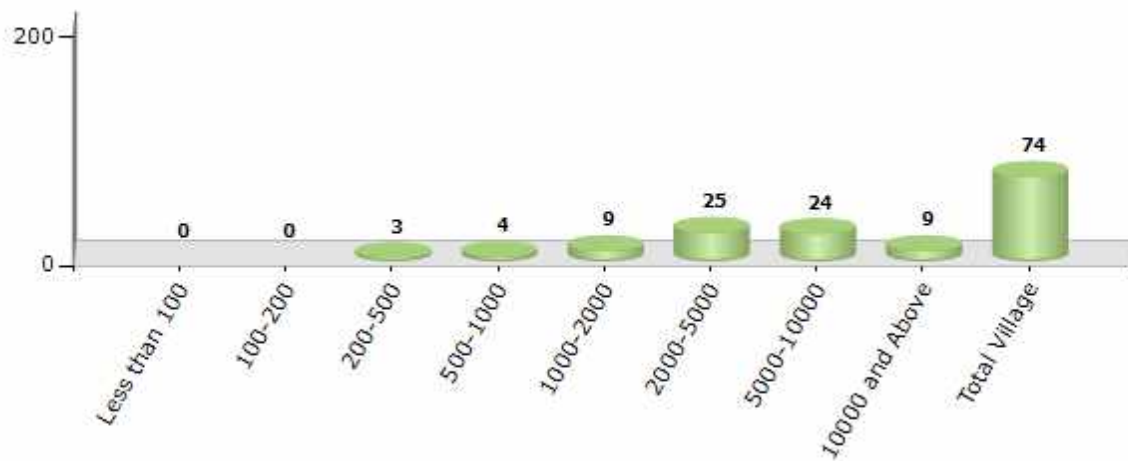
Contd....

Demographics

Number of Villages by Population Size - 2011

Less than 100	100-200	200-500	500-1000	1000-2000	2000-5000	5000-10000	10000 and Above	Total Village
0	0	3	4	9	25	24	9	74

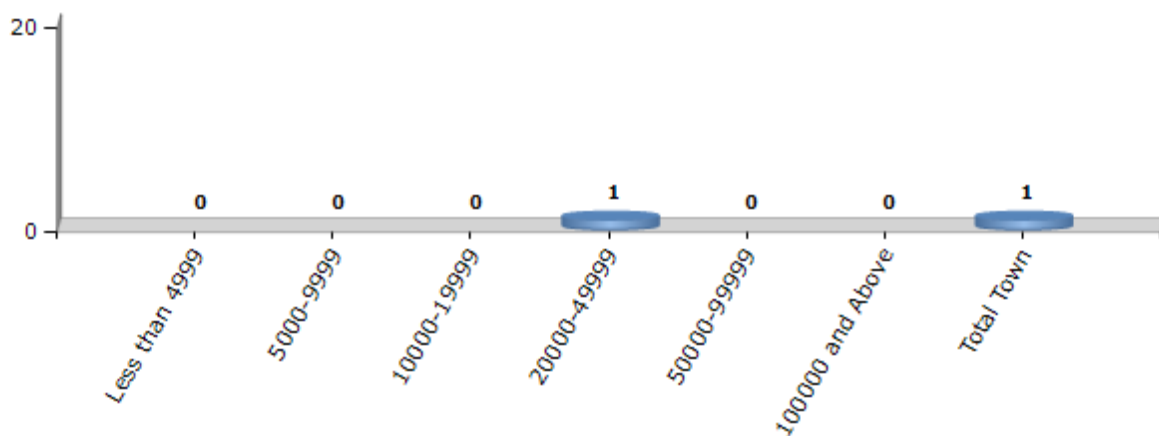
Number of Villages by Population Size - 2011



Number of Towns by Population Size - 2011

Less than 4999	5000-9999	10000-19999	20000-49999	50000-99999	100000 and Above	Total Town
0	0	0	1	0	0	1

Number of Towns by Population Size - 2011

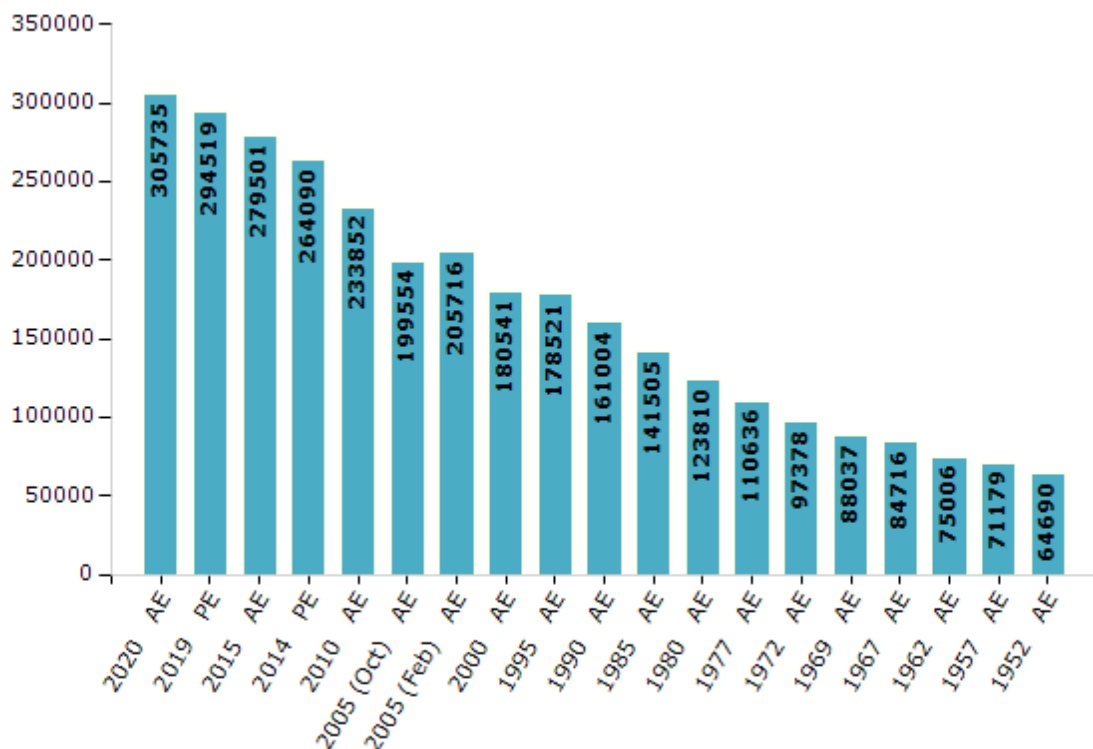


Electoral Features

Electors by Male & Female

Year	Male	Female	Others	Total	Year	Male	Female	Others	Total
2020 AE	160556	145175	4	305735	1995 AE	98977	79544	-	178521
2019 PE	154408	140105	6	294519	1990 AE	87401	73603	-	161004
2015 AE	147396	132094	11	279501	1985 AE	73828	67677	-	141505
2014 PE	142274	121816	0	264090	1980 AE	64426	59384	-	123810
2010 AE	125876	107976	0	233852	1977 AE	57260	53376	-	110636
2009 PE	-	-	-	-	1972 AE	49133	48245	-	97378
2005 (Oct) AE	108661	90893	-	199554	1969 AE	43189	44848	-	88037
2005 (Feb) AE	111621	94095	-	205716	1967 AE	-	-	-	84716
2004 PE	-	-	-	-	1962 AE	-	-	-	75006
2000 AE	97199	83342	-	180541	1957 AE	-	-	-	71179
1999 PE	-	-	-	-	1952 AE	-	-	-	64690

Number of Electors



Note : AE : Assembly Election, PE : Assembly Segment of Parliamentary Election

Historical Summary Election Results

Summary Result of Assembly Election - 2015

Candidate Name	Party	Votes	Votes %
Sitaram Yadav	RJD	71534	43.56
Arun Shankar Prasad	BJP	60831	37.04
Amiruddin	CPI	7568	4.61
Pursottam Jha	IND	5523	3.36
Brajesh Raut	IND	2440	1.49
Murari Thakur	BSP	2281	1.39
Ram Kumar Yadav	SP	1837	1.12
Sonu Kumar Jha	IND	1782	1.09
Sudhakar Kumar	ABHM	1657	1.01
Vishwanath Yadav	IND	1636	1
Amit Kumar Mahto	AVIRP	1458	0.89
Raj Kumar Yadav	JAPL	1144	0.7
Prabhakar Jha	AKBMP	1135	0.69
Anand Mohan	BMtrP	613	0.37
Dinesh Thakur	AIFB	548	0.33
	NOTA	2240	1.36

Polling Station Level Election Results

Number and Name of Polling Stations (PS) (2020)

Number of Polling Stations	Name of Polling Stations	Number of Polling Stations	Name of Polling Stations
1	Madhya Vidyalay, Khauna, Baya Bhag	15	Prathamik Vidyalaya Jauki Daya Bhag
2	Madhya Vidyalay, Khauna, Madhy Bhag	16	Utkramit Madhya Vidhyalay Simradhi Baya Bhag
3	Madhy Vidyalaya Khauna Daya Bhag	16A	Utkramit Madhya Vidhyalay Simradhi Baya Bhag
3A	Madhy Vidyalaya Khauna Daya Bhag	17	Kanya Madhya Vidhyalay, Jauki Baya Bayg
4	Prathamik Vidyalay, Gamhariya	17A	Kanya Madhya Vidhyalay, Jauki Baya Bayg
5	Uchcha Vidyalay, Lauthava Baya Bhag	18	Kanya Madhya Vidhyalay, Jauki Daya Bhag
5A	Uchcha Vidyalay, Lauthava Baya Bhag	19	Sanskrit Vidyalay, Chhatauni Baya Bhag
6	Prathamik Vidyalay, Majaura Baya Bhag	20	Sanskrit Vidyalay, Chhatauni Daya Bhag
6A	Prathamik Vidyalay, Majaura Baya Bhag	21	Prathamik Vidhyalaya Chhatauni Baya Bhag
7	Madhya Vidyalay, Chhatauni,	21A	Prathamik Vidhyalaya Chhatauni Baya Bhag
8	Madhya Vidyalay, Dubahi Bazar Baya Bhag	22	Prathamik Vidyalay, Chhatauni Daya Bhag
8A	Madhya Vidyalay, Dubahi Bazar Baya Bhag	23	Utkramit Madhya Vidyalay, Sirahi Bayan Bhag
9	Prathamik Vidyalay, Janakinagar	23A	Utkramit Madhya Vidyalay, Sirahi Bayan Bhag
10	Rajakiy Prathamik Harijan Vidyalay, Mahinathapur Baya Bhag	24	Utkramit Madhya Vidyalay, Sirahi Dayan Bhag
10A	Rajakiy Prathamik Harijan Vidyalay, Mahinathapur Baya Bhag	24A	Utkramit Madhya Vidyalay, Sirahi Dayan Bhag
11	Rajakiy Prathamik Harijan Vidyalay, Mahinathapur Daya Bhag	25	Utkramit Madhya Vidyalaya Kataiya
12	Prathmik Vidyalay Muslim, Mahinathapur, Baya Bhag	26	Pratmik Vidhyalay Kataiya (Goth) Baya Bhag
12A	Prathmik Vidyalay Muslim, Mahinathapur, Baya Bhag	27	Prathamik Vidyalaya Kataiya Goth Daya Bhag
13	Prathmik Vidyalay Muslim, Mahinathapur, Daya Bhag	28	Utkramit Madhya Vidyalay, Mahathaur Baya Bhag
13A	Prathmik Vidyalay Muslim, Mahinathapur, Daya Bhag	29	Utkramit Madhya Vidyalay, Mahathaur Daya Bhag
14	Prathamik Vidyalay, Joki Baya Bhag	30	Utkramit Madhy Vidhyalay Jhitakohiya Bayan Bhag

Contd....

Polling Station Level Election Results

Polling Station-wise Votes Secured by Overall Top Five Parties in Khajauli Assembly in Assembly Election (AE) under Jhanjharpur Parliamentary Constituency in Bihar (2020)

Number of Polling Station	Winner - Arun Shankar Prasad (BJP)	Runner-up - Sitaram Yadav (RJD)	3rd - Braj Kishor Yadav (JAPL)	4th - Ambika Pd Singh (IND)	5th - Dilip Kuwar (IND)	NOTA	Other	Total Votes Secured
24A	60	103	123	10	4	7	46	353
25	16	97	10	9	2	6	264	404
26	113	73	21	16	1	3	313	540
27	98	81	27	13	7	10	381	617
28	151	322	21	15	1	0	67	577
29	235	159	29	22	14	3	158	620
30	183	73	50	16	7	3	62	394
30A	209	103	18	9	6	3	92	440
31	171	62	20	4	1	0	60	318
32	241	56	11	5	2	4	19	338
32A	290	50	15	14	10	2	24	405
33	216	31	59	10	7	8	51	382
33A	196	18	53	6	2	1	7	283
34	260	40	43	10	8	2	25	388
34A	279	17	36	7	11	3	17	370
35	225	79	144	15	5	10	48	526
36	193	55	268	11	3	9	46	585
37	108	158	157	14	3	5	62	507
38	135	138	174	23	6	3	61	540
39	214	82	23	6	4	0	19	348
39A	215	83	24	18	2	4	45	391
40	274	98	61	18	8	3	48	510
41	219	337	9	17	28	2	53	665
42	114	121	2	24	5	2	13	281
42A	233	98	4	16	3	0	12	366
43	374	44	4	15	25	0	22	484
43A	389	50	3	21	2	0	12	477
44	340	156	7	13	10	1	22	549
45	326	57	3	18	3	1	7	415
45A	332	21	3	16	2	3	14	391
46	311	91	4	9	2	7	5	429
46A	297	110	5	14	10	1	35	472
47	238	56	1	34	6	7	19	361
47A	272	45	4	21	4	0	21	367
48	239	173	7	6	1	0	16	442

Contd....

Polling Station Level Election Results

Winner, Runner-up and 3rd Party Position & Winning Margin According to Polling Stations in Khajauli Assembly in Assembly Election (AE) under Jhunjharpur Parliamentary Constituency in Bihar (2020)

Polling Station Number	Winner Party	Winner Votes (%)	Runner-up Party	Runner-up Votes (%)	Winning Margin Votes (%)	Third Party	Third Party Votes (%)	Other Votes (%)
48A	BJP	312 (69.96)	RJD	99 (22.2)	213 (47.76)	IND (AKM)	7 (1.57)	28 (6.28)
49	BJP	262 (47.38)	RJD	230 (41.59)	32 (5.79)	IND (APS)	14 (2.53)	47 (8.5)
50	RJD	342 (67.86)	BJP	79 (15.67)	263 (52.19)	JAPL	16 (3.17)	67 (13.29)
51	BJP	201 (49.51)	RJD	114 (28.08)	87 (21.43)	JAPL	39 (9.61)	52 (12.81)
51A	RJD	247 (53.93)	BJP	98 (21.4)	149 (32.53)	JAPL	39 (8.52)	74 (16.16)
52	RJD	446 (82.75)	BJP	56 (10.39)	390 (72.36)	JAPL	14 (2.6)	23 (4.27)
53	RJD	217 (70)	BJP	53 (17.1)	164 (52.9)	IND (NKS)	11 (3.55)	29 (9.35)
53A	RJD	249 (65.53)	BJP	102 (26.84)	147 (38.69)	JAPL	8 (2.11)	21 (5.53)
54	BJP	181 (63.96)	RJD	28 (9.89)	153 (54.07)	IND (DK)	16 (5.65)	58 (20.49)
54A	BJP	157 (70.72)	RJD	29 (13.06)	128 (57.66)	JAPL	12 (5.41)	24 (10.81)
55	RJD	276 (50.18)	JAPL	116 (21.09)	160 (29.09)	BJP	106 (19.27)	52 (9.45)
56	RJD	269 (45.9)	BJP	129 (22.01)	140 (23.89)	JAPL	101 (17.24)	87 (14.85)
57	RJD	279 (56.25)	BJP	124 (25)	155 (31.25)	IND (APS)	30 (6.05)	63 (12.7)
58	BJP	235 (62.17)	RJD	96 (25.4)	139 (36.77)	IND (APS)	18 (4.76)	29 (7.67)
58A	BJP	267 (69.35)	RJD	47 (12.21)	220 (57.14)	IND (APS)	16 (4.16)	55 (14.29)
59	BJP	368 (81.42)	RJD	30 (6.64)	338 (74.78)	IND (APS)	18 (3.98)	36 (7.96)
60	BJP	309 (64.24)	RJD	60 (12.47)	249 (51.77)	JAPL	58 (12.06)	54 (11.23)
61	BJP	317 (59.47)	RJD	147 (27.58)	170 (31.89)	JAPL	36 (6.75)	33 (6.19)
62	BJP	171 (36.31)	RJD	165 (35.03)	6 (1.28)	JAPL	57 (12.1)	78 (16.56)
63	BJP	234 (40.63)	RJD	208 (36.11)	26 (4.52)	JAPL	56 (9.72)	78 (13.54)
64	BJP	220 (49)	RJD	194 (43.21)	26 (5.79)	JAPL	6 (1.34)	29 (6.46)
65	RJD	163 (49.7)	BJP	101 (30.79)	62 (18.91)	IND (APS)	23 (7.01)	41 (12.5)
65A	RJD	232 (55.64)	BJP	112 (26.86)	120 (28.78)	IND (APS)	17 (4.08)	56 (13.43)
66	RJD	337 (88.45)	BJP	21 (5.51)	316 (82.94)	JAPL	9 (2.36)	14 (3.67)
66A	RJD	237 (58.81)	BJP	92 (22.83)	145 (35.98)	JAPL	16 (3.97)	58 (14.39)
67	RJD	135 (33.09)	JAPL	134 (32.84)	1 (0.25)	BJP	84 (20.59)	55 (13.48)
67A	RJD	123 (34.26)	BJP	97 (27.02)	26 (7.24)	JAPL	57 (15.88)	82 (22.84)
68	BJP	229 (41.64)	RJD	207 (37.64)	22 (4)	JAPL	30 (5.45)	84 (15.27)
69	BJP	380 (74.22)	RJD	62 (12.11)	318 (62.11)	IND (APS)	24 (4.69)	46 (8.98)
70	BJP	363 (73.19)	RJD	86 (17.34)	277 (55.85)	IND (APS)	14 (2.82)	33 (6.65)
71	BJP	356 (70.92)	RJD	113 (22.51)	243 (48.41)	IND (APS)	9 (1.79)	24 (4.78)
72	BJP	610 (79.95)	RJD	110 (14.42)	500 (65.53)	JAPL	12 (1.57)	31 (4.06)
73	BJP	356 (67.04)	RJD	120 (22.6)	236 (44.44)	IND (APS)	22 (4.14)	33 (6.21)
73A	BJP	391 (69.33)	RJD	124 (21.99)	267 (47.34)	IND (APS)	19 (3.37)	30 (5.32)
74	BJP	276 (72.82)	RJD	39 (10.29)	237 (62.53)	JAPL	16 (4.22)	48 (12.66)

Contd....

Socio-Economic Amenities - Rural

Access to Education Facilities

Particulars	Number of Villages (% of Population)				
	Available	Not Available	If Not Available (Distance of Nearest Facility)		
			A	B	C
Govt. Primary School	71 (100)	2 (0)	2 (0)	0 (0)	0 (0)
Private Primary School	7 (25)	66 (75)	0 (0)	0 (0)	0 (0)
Govt. Middle School	60 (96)	13 (4)	11 (3)	1 (1)	0 (0)
Private Middle School	3 (17)	70 (83)	1 (0)	0 (0)	0 (0)
Govt. Secondary School	15 (28)	58 (72)	10 (11)	24 (36)	20 (14)
Private Secondary School	4 (12)	69 (88)	1 (1)	0 (0)	0 (0)
Govt. Senior Secondary School	3 (7)	70 (93)	4 (2)	20 (22)	43 (58)
Private Senior Secondary School	1 (8)	72 (92)	0 (0)	1 (0)	1 (2)
Govt. Arts and Science Degree College	5 (20)	68 (80)	3 (6)	11 (15)	19 (29)
Private Arts and Science Degree College	0 (0)	73 (100)	0 (0)	10 (7)	25 (22)
Govt. Engineering College	0 (0)	73 (100)	0 (0)	0 (0)	0 (0)
Private Engineering College	0 (0)	73 (100)	0 (0)	2 (1)	71 (99)
Govt. Medicine College	0 (0)	73 (100)	0 (0)	6 (4)	67 (96)
Private Medicine College	0 (0)	73 (100)	0 (0)	0 (0)	0 (0)
Govt. Management Institute	0 (0)	73 (100)	0 (0)	1 (1)	22 (44)
Private Management Institute	0 (0)	73 (100)	0 (0)	2 (2)	48 (53)
Govt. Polytechnic	0 (0)	73 (100)	0 (0)	2 (1)	70 (98)
Private Polytechnic	0 (0)	73 (100)	0 (0)	0 (0)	1 (1)
Govt. Vocational Training School/ITI	1 (8)	72 (92)	0 (0)	0 (0)	72 (92)
Private Vocational Training School/ITI	0 (0)	73 (100)	0 (0)	0 (0)	0 (0)
Govt. Non Formal Training Centre	0 (0)	73 (100)	0 (0)	0 (0)	71 (94)
Private Non Formal Training Centre	0 (0)	73 (100)	0 (0)	0 (0)	2 (6)
Govt. School For Disabled	0 (0)	73 (100)	0 (0)	0 (0)	72 (97)
Private School For Disabled	0 (0)	73 (100)	0 (0)	0 (0)	1 (3)
Government Others	2 (3)	71 (97)	0 (0)	0 (0)	6 (9)
Private Others	2 (4)	71 (96)	0 (0)	0 (0)	0 (0)

Note : Distance A : Less than 5 km; B : Between 5-10 km; C : 10+ km.; Source : Data Analysis is based on 2011 Census.

DISCLAIMER

The Terms of Use and Disclaimer of Datanet India Private Limited (hereinafter referred to as "Datanet") for use of this analysis report of **Khajauli Assembly Constituency (Khajauli Vidhan Sabha)** :-

1. **Assembly Factbook™** is a Registered Trade Mark owned by Datanet.
2. All the maps are sketched and graphical representation only and have not been drawn to the scale and also not to represent the actual geographical area or boundary of the unit.
3. The data for the aforesaid analysis is based on authentic sources and has been culled from the various publications of Census, CSO and NSSO for district and block level data, various central and state government departments, Central & State Elections Commissions and the concerned Returning Officers' releases, Electoral Rolls, Election results and allied publications, internal assessment, surveys, estimates and analysis. Therefore, certain adjustment of data at micro level may have been done to arrive closer to the macro data.
4. Data have been provided on an "As Is" and "As AVAILABLE" basis
5. The colours shown in the maps or diagram and charts of a particular party, alliance or AC are indicative and do not represent them.
6. This publication which includes maps, sheets, graphs and data would be the property under copyright of Datanet only. The user may use these for its internal study, analysis and research purposes. It's public display, re-selling or any commercial uses by the user are not allowed.
7. Datanet has taken due care and caution in compilation and processing of data and allied information, but does not guarantee the accuracy, adequacy or completeness of any information/analysis and will be not responsible for any errors or omissions or for the results obtained from the use of such information/analysis.
8. All the contents for the publication have been culled from various authentic sources and Datanet reasonably believes such sources to be reliable, but does not make any representations, express or implied as to the accuracy or fitness of use of such information. The information or contents of the information/analysis do not constitute advice and should not be relied upon in making (or refraining from making) any decision. Any reliance placed upon the information provided by Datanet is the sole responsibility and strictly at the user's risk.
9. In no event will Datanet be liable for any damages (including, without limitation, damages for loss of business projects, or loss of profits) arising in contract, tort or otherwise from the use of or inability to use any of its contents, or from any action taken (or refrained from being taken) as a result of using the analysis or any of its contents. Datanet its directors, owners, editors, officials, employees, distributor and agents or any associate will not be liable for any errors in the information contained or any consequences arising from the use of the contents of the provided information/analysis.
10. If any provision of these terms and conditions is held invalid or illegal or unenforceable for any reason by any court of competent jurisdiction, such provision shall be severed and the remainder of provisions of the terms and conditions shall continue in full force and effect as if the Term of Use had been executed with the invalid, illegal or unenforceable provision eliminated.
11. If there are any discrepancies in the information provided, please bring it to attention of Datanet for suitable rectification measures.

**Buy Online This Complete Book At
Datanet India eBooks Store**

www.indiastatpublications.com

or go directly at

**[http://www.indiastatpublications.com/
Assembly_factbook/Bihar/Jhanjharpur/ Khajauli](http://www.indiastatpublications.com/Assembly_factbook/Bihar/Jhanjharpur/Khajauli)**

 **india**stat**elections**

ISBN: 978-93-5313-111-1



9 789353 131111