



Bihar

Assembly Factbook™

Nokha Assembly Constituency



Key Electoral Data of Nokha
Assembly Constituency (Vidhan Sabha)

Bihar

Assembly Factbook™

Nokha Assembly Constituency



Nokha Vidhan Sabha

Editor & Director

Dr. R.K. Thukral

Research Editor

Dr. Shafeeq Rahman

Compiled, Researched and Published by Datanet India Pvt. Ltd.

D-100, 1st Floor,

Okhla Industrial Area, Phase-I,
New Delhi- 110020.

Ph.: 91-11- 43580781-84

Email : support@indiastatpublications.com

Website : www.indiastatelections.com

Online Book Store :

www.indiastatpublications.com

Report No. : AFB/BR-211-0125

ISBN : 978-93-5313-151-7

First Edition : January, 2018

Eighth Updated Edition : January, 2025

Price : Rs. 11500/-

US\$ 310

© **Datanet India Pvt. Ltd.**

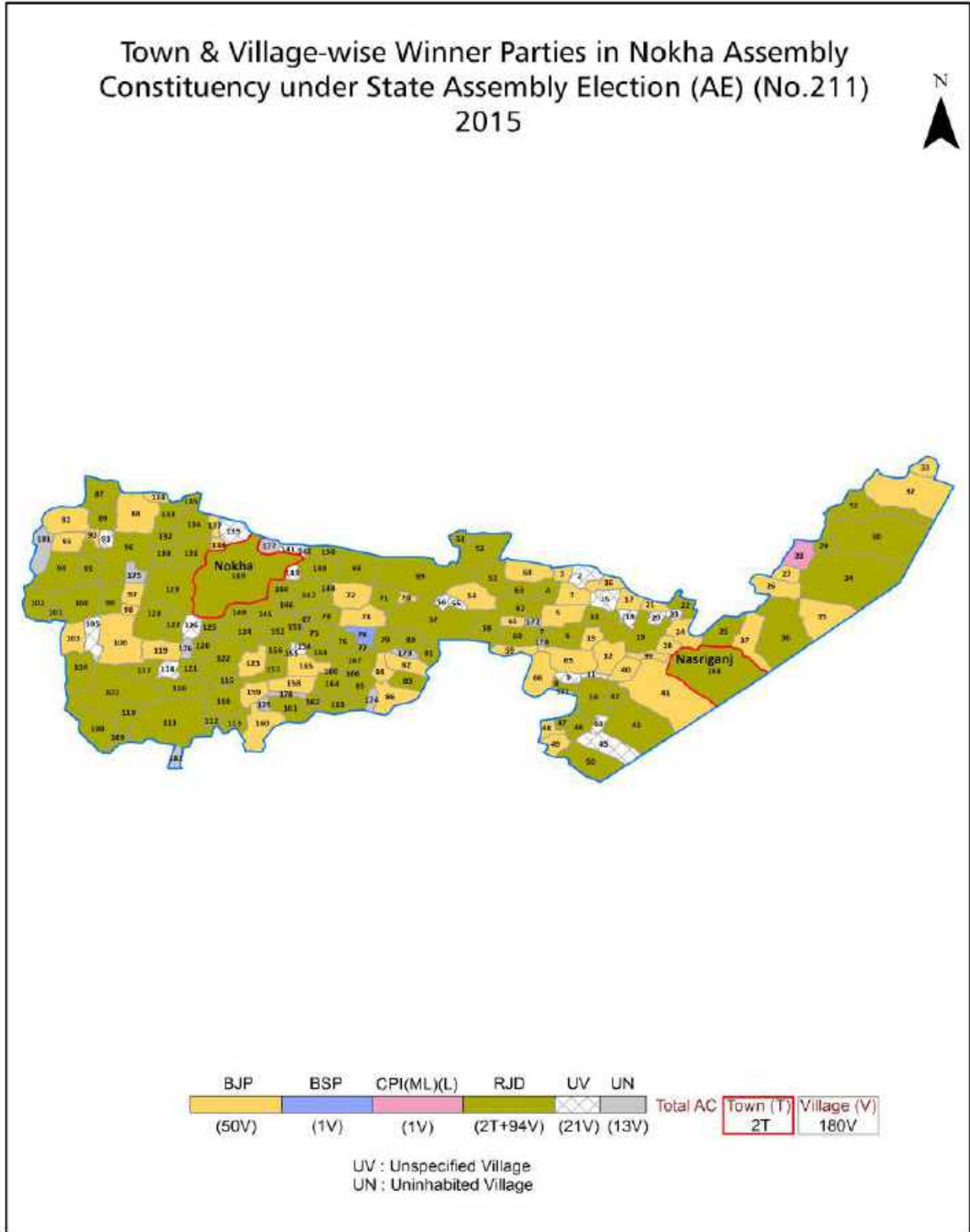
All rights reserved. No part of this book may be reproduced, stored in a retrieval system or transmitted in any form or by any means, mechanical photocopying, photographing, scanning, recording or otherwise without the prior written permission of the publisher. Please refer to Disclaimer at page no. 223 for the use of this publication.

Printed in India

Contents

No.	Particulars	Page No.
	Introduction	
1	Assembly Constituency - (Vidhan Sabha) at a Glance Features of Assembly as per Delimitation Commission of India (2008)	1-2
	Location and Political Maps	
2	Location Map Boundaries of Assembly Constituency - (Vidhan Sabha) in District Boundaries of Assembly Constituency under Parliamentary Constituency - (Lok Sabha) Town & Village-wise Winner Parties- 2024, 2020, 2015, 2014, 2010 and 2009	3-11
	Administrative Setup (2011)	
3	District Sub-district Towns Villages Inhabited Villages Uninhabited Villages Village Panchayat Intermediate Panchayat	11-19
	Demographics (2011)	
4	Population Households Rural/Urban Population Towns and Villages by Population Size Sex Ratio (Total & 0-6 Years) Religious Population Social Population Literacy Rate	20-21
	Electoral Features	
5	Important Dates of Last Elections Held Electors by Gender Service Electors Voters Voters Turnout Polling Stations & Average Number of Electors per Polling Station Electors by Age Group Present Elected Representatives	22-27
	Historical Summary Election Results	
6	Vote Share of Major Parties Winning Margin (Number & Percentage) Polarity of Parties Summary Result of Assembly Segment of Parliamentary Elections 2024, 2019, 2014, 2009, 2004 and 1999 Summary Result of Assembly Elections 2020, 2015, 2010, 2005 (Oct), 2005 (Feb), 2000, 1995, 1990, 1985, 1980, 1977, 1972, 1969, 1967, 1962, 1957 and 1952	28-55
	Polling Station Level Election Results	
7	Name and Number of Polling Station 2024, 2020, 2015, 2014, 2010 and 2009 Polling Station-wise Electors, Voters & Voters Turnout 2024, 2020, 2015, 2014, 2010 and 2009 Polling Station wise Elections Results 2024, 2020, 2015, 2014, 2010 and 2009	56-202
	Share of Assembly Constituency	
8	Share of Assembly Constituency - (Vidhan Sabha) in State, District and Parliamentary Constituency - (Lok Sabha)	203
	Socio-Economic Amenities (2011)	
9	Access to Administrative Units Agricultural, Manufacturing and Industrial Commodities Demographic Indicators Education Health & Manpower Drinking Water Supply Sanitation Entertainment and Recreations Infrastructure Power Food Allocation Distribution and Marketing of Agriculture Commodities Infrastructure Transport and Road Infrastructure Communication Banking and Financial Services Land Use Irrigation Source	205-219
10	Abbreviation & Sources	220-222
11	Disclaimer	223

Location & Political Map



Administrative Setup

List of Village Panchayat & Intermediate Panchayat (Block) Name - 2011

Village Name	Village Panchayat Name	Intermediate Panchayat Name
Agini	Mangrawan	Nasriganj
Akrahia	Chattona	Nokha
Amalawa	Parasia	Nasriganj
Amarhi	Magarwalia	Rajpur
Amarpur	Barna	Rajpur
Amiawar	Amiawar	Nasriganj
Atimi	Atimi	Nasriganj
Babhandih	Dhanaw	Nasriganj
Badjoga	Hathini	Nokha
Bagea	Khiriyanw	Nasriganj
Baghaila	Rotawan	Rajpur
Balia	Itimha	Nasriganj
Baligawan	Ghusia	Nokha
Baradih	Dehari	Nasriganj
Baradih	Dharampura	Nokha
Baraicha	Barawn	Rajpur
Barana	Barna	Rajpur
Baranw	Barawn	Rajpur
Barawan	Utari Barao	Nokha
Bardiha	Pokhraha	Nasriganj
Bhaluahi	Rajpur	Rajpur
Bhaon	Chanki	Nokha
Bharkol	Pawani	Nasriganj
Bhatauli	Parariya	Rajpur
Bhatauli	Chattona	Nokha
Bhaunra	Sotwa	Nokha
Bhawandihri	Sisirita	Nokha
Bhikharidih	Nonsari	Nokha
Biseni Khurd	Dakshni Barao	Nokha

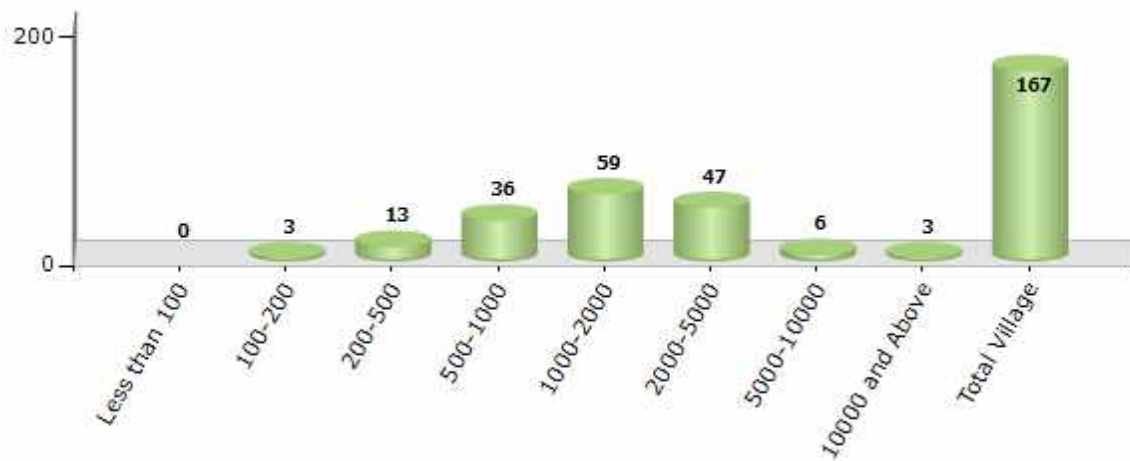
Contd....

Demographics

Number of Villages by Population Size - 2011

Less than 100	100-200	200-500	500-1000	1000-2000	2000-5000	5000-10000	10000 and Above	Total Village
0	3	13	36	59	47	6	3	167

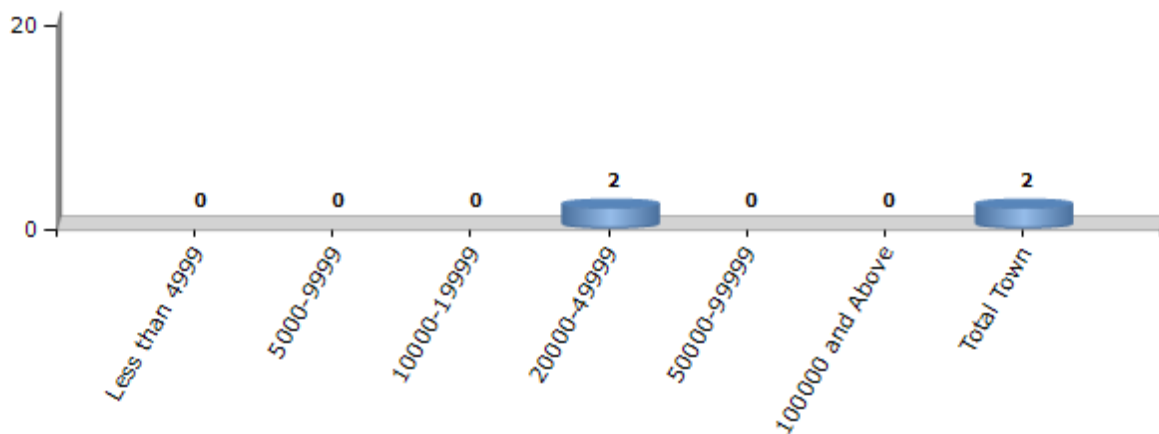
Number of Villages by Population Size - 2011



Number of Towns by Population Size - 2011

Less than 4999	5000-9999	10000-19999	20000-49999	50000-99999	100000 and Above	Total Town
0	0	0	2	0	0	2

Number of Towns by Population Size - 2011

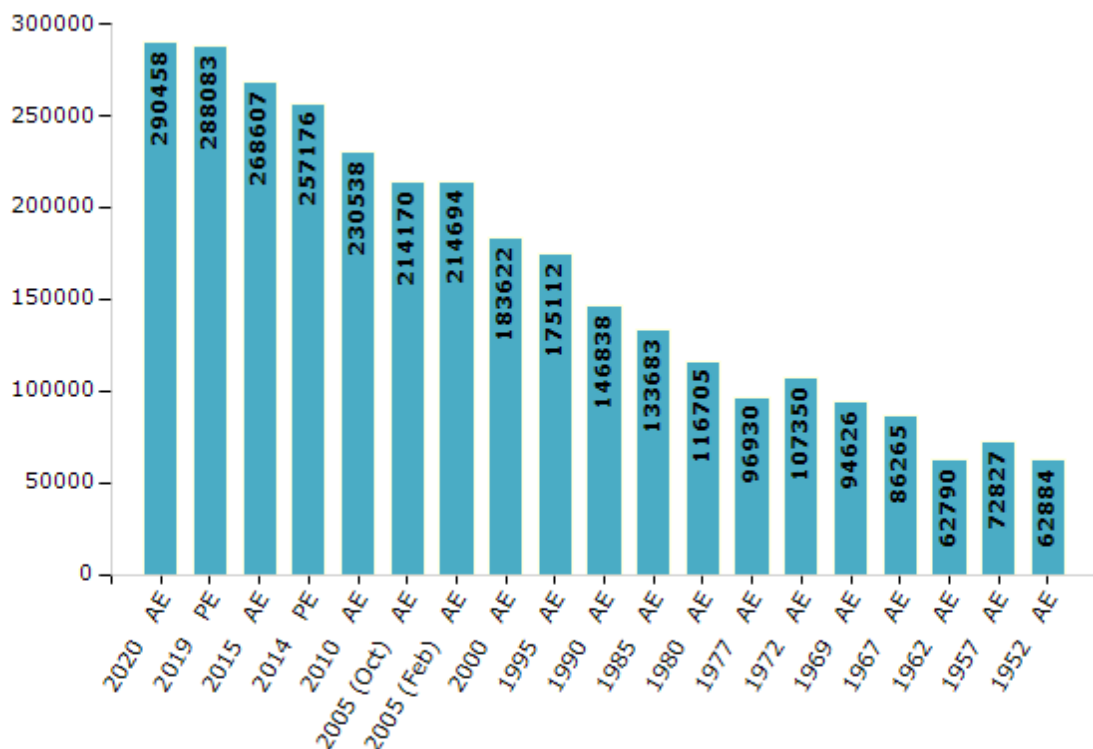


Electoral Features

Electors by Male & Female

Year	Male	Female	Others	Total	Year	Male	Female	Others	Total
2020 AE	153093	137355	10	290458	1995 AE	91302	83810	-	175112
2019 PE	150820	137251	12	288083	1990 AE	78903	67935	-	146838
2015 AE	144737	123863	7	268607	1985 AE	71126	62557	-	133683
2014 PE	138647	118524	5	257176	1980 AE	61752	54953	-	116705
2010 AE	124882	105656	0	230538	1977 AE	50589	46341	-	96930
2009 PE	-	-	-	-	1972 AE	56971	50379	-	107350
2005 (Oct) AE	114479	99691	-	214170	1969 AE	51631	42995	-	94626
2005 (Feb) AE	115855	98839	-	214694	1967 AE	-	-	-	86265
2004 PE	-	-	-	-	1962 AE	-	-	-	62790
2000 AE	100494	83128	-	183622	1957 AE	-	-	-	72827
1999 PE	-	-	-	-	1952 AE	-	-	-	62884

Number of Electors



Note : AE : Assembly Election, PE : Assembly Segment of Parliamentary Election

Historical Summary Election Results

Summary Result of Assembly Election - 2015

Candidate Name	Party	Votes	Votes %
Anita Devi	RJD	72780	51.62
Rameshwar Prasad	BJP	49782	35.31
Rajendra Singh	BSP	4101	2.91
Jawahar Lal Singh	CPI(ML)(L)	2783	1.97
Virendra Singh	IND	1802	1.28
Yashoda Devi	IND	1570	1.11
Suresh Pandey	IND	913	0.65
Arvind Kumar Chakrawarti	HCP	872	0.62
Anil Singh	IND	856	0.61
Ram Dayal Singh	IND	772	0.55
Madhav Murari Gupta	SP	500	0.35
Himanshu Kumar	RSWD	430	0.3
Jay Prakash Singh	SASAPT	352	0.25
Aarti Devi	AD	317	0.22
Kanhaiya Sah	NYP	242	0.17
	NOTA	2923	2.07

Polling Station Level Election Results

Number and Name of Polling Stations (PS) (2020)

Number of Polling Stations	Name of Polling Stations	Number of Polling Stations	Name of Polling Stations
1	Uchcha Vidyalay Kaithi	15	Madhya Vidyalay Bhavarah
1A	Uchcha Vidyalay Kaithi	15A	Madhya Vidyalay Bhavarah
2	Prathamik Vidyalay Singava	16	Madhya Vidyalay Bhavarah Paschim Bhag
3	Uttakramit Vidyalay Dharmapura Uttari Bhag	17	Prathamik Vidyalay Tendua
3A	Uttakramit Vidyalay Dharmapura Uttari Bhag	18	Prathamik Vidyalay Shitalapur
4	Uttakramit Madhya Vidyalay Dharmapura Dakshin Bhag	19	Uchcha Vidyalay Nokha (Purbi Bhag)
5	Uttakramit Madhya Vidyalay Mujaradh (Purbi Bhag)	19A	Uchcha Vidyalay Nokha (Purbi Bhag)
5A	Uttakramit Madhya Vidyalay Mujaradh (Purbi Bhag)	20	Uchcha Vidyalay Nokha (Pashchimi Bhag)
6	Madhya Vidyalay Mujaradh Paschmi Bhag	20A	Uchcha Vidyalay Nokha (Pashchimi Bhag)
6A	Madhya Vidyalay Mujaradh Paschmi Bhag	21	Prathamik Vidyalay Nokha (Uttar Bhag)
7	Prathamik Vidyalay Gamhariya	21A	Prathamik Vidyalay Nokha (Uttar Bhag)
8	Prathamik Vidyalay Varadih	22	Prathamik Vidyalay Nokha (Dakshin Bhag)
9	Urdu Prathamik Vidyalay Dudhar	22A	Prathamik Vidyalay Nokha (Dakshin Bhag)
9A	Urdu Prathamik Vidyalay Dudhar	23	Prathamik Vidyalay Lalaganj Nokha (Uttar Bhag)
10	Madhya Vidyalay Hasanadih	23A	Prathamik Vidyalay Lalaganj Nokha (Uttar Bhag)
10A	Madhya Vidyalay Hasanadih	24	Prathamik Vidyalay Lalaganj Nokha (Dakshin Bhag)
11	Utkramit Madhya Vidyalay Sotava Purbi Bhag	24A	Prathamik Vidyalay Lalaganj Nokha (Dakshin Bhag)
12	Utkramit Madhya Vidyalay Sotava Paschim Bhag	25	Sarwoday Uchcha Vidyalay Nokha (Dakshin Bhag)
13	Prathamik Vidyalay Charanadh Uttari Bhag	25A	Sarwoday Uchcha Vidyalay Nokha (Dakshin Bhag)
13A	Prathamik Vidyalay Charanadh Uttari Bhag	26	Sarwoday Uchcha Vidyalay Nokha (Uttar Bhag)
14	Prathamik Vidyalay Charanadh Dakshin Bhag	26A	Sarwoday Uchcha Vidyalay Nokha (Uttar Bhag)

Contd....

Polling Station Level Election Results

Polling Station-wise Votes Secured by Overall Top Five Parties in Nokha Assembly in Assembly Election (AE) under Karakat Parliamentary Constituency in Bihar (2020)

Number of Polling Station	Winner - Anita Devi (RJD)	Runner-up - Nagendra Chandrawansi (JD(U))	3rd - Krishna Kabir (LJP)	4th - Akhileshwar Prasad Singh (RLSP)	5th - Arti Devi (IND)	NOTA	Other	Total Votes Secured
23A	126	12	2	72	0	6	4	222
24	377	28	9	7	6	3	34	464
24A	296	22	5	2	4	4	18	351
25	146	182	12	4	16	4	7	371
25A	78	139	13	3	7	0	13	253
26	101	74	105	43	40	8	36	407
26A	71	26	157	41	25	9	27	356
27	96	198	4	13	14	3	9	337
27A	46	210	8	4	9	3	10	290
28	129	113	25	1	6	4	7	285
28A	83	229	35	2	14	4	23	390
29	321	100	11	4	4	5	20	465
29A	50	211	18	11	2	3	15	310
30	33	242	1	3	7	0	18	304
30A	37	166	32	3	13	7	16	274
31	144	149	45	13	18	7	41	417
32	234	128	12	6	4	2	16	402
32A	211	71	6	3	1	2	15	309
33	183	113	55	17	10	1	15	394
34	73	196	50	6	6	8	23	362
35	119	216	30	2	5	2	6	380
36	74	118	64	3	11	2	13	285
37	46	100	19	7	5	5	11	193
37A	13	129	67	1	2	1	11	224
38	24	250	13	4	8	3	16	318
38A	39	181	2	1	12	1	13	249
39	41	179	1	2	24	4	15	266
39A	104	83	12	13	11	4	3	230
40	12	172	2	2	15	0	8	211
41	159	96	90	6	21	4	16	392
41A	188	33	7	27	1	3	10	269
42	279	141	41	11	6	7	25	510
43	137	142	192	20	19	4	32	546
44	220	122	51	71	8	2	13	487
45	NV	NV	NV	NV	NV	NV	NV	NV

Contd....

Polling Station Level Election Results

Winner, Runner-up and 3rd Party Position & Winning Margin According to Polling Stations in Nokha Assembly in Assembly Election (AE) under Karakat Parliamentary Constituency in Bihar (2020)

Polling Station Number	Winner Party	Winner Votes (%)	Runner-up Party	Runner-up Votes (%)	Winning Margin Votes (%)	Third Party	Third Party Votes (%)	Other Votes (%)
46	JD(U)	275 (69.44)	RJD	41 (10.35)	234 (59.09)	RLSP	28 (7.07)	52 (13.13)
46A	LJP	138 (48.76)	JD(U)	54 (19.08)	84 (29.68)	RJD	40 (14.13)	51 (18.02)
47	JD(U)	197 (54.57)	LJP	89 (24.65)	108 (29.92)	RJD	36 (9.97)	39 (10.8)
48	RJD	302 (86.53)	JD(U)	26 (7.45)	276 (79.08)	IND (SSJ)	7 (2.01)	14 (4.01)
49	RJD	184 (42.49)	RLSP	84 (19.4)	100 (23.09)	JD(U)	82 (18.94)	83 (19.17)
50	RJD	142 (30.15)	RLSP	139 (29.51)	3 (0.64)	JD(U)	133 (28.24)	57 (12.1)
51	RJD	245 (73.8)	JD(U)	57 (17.17)	188 (56.63)	LJP	18 (5.42)	12 (3.61)
52	RJD	173 (47.27)	JD(U)	169 (46.17)	4 (1.1)	BhAmAP	7 (1.91)	17 (4.64)
52A	JD(U)	128 (51.82)	RJD	88 (35.63)	40 (16.19)	IND (SSJ)	9 (3.64)	22 (8.91)
53	RJD	199 (41.12)	RLSP	184 (38.02)	15 (3.1)	JD(U)	68 (14.05)	33 (6.82)
54	JD(U)	144 (34.7)	RJD	131 (31.57)	13 (3.13)	LJP	107 (25.78)	33 (7.95)
54A	RJD	151 (46.75)	RLSP	81 (25.08)	70 (21.67)	JD(U)	67 (20.74)	24 (7.43)
55	JD(U)	342 (80.09)	RJD	50 (11.71)	292 (68.38)	IND (AD)	13 (3.04)	22 (5.15)
56	RJD	218 (50.82)	JD(U)	115 (26.81)	103 (24.01)	LJP	43 (10.02)	53 (12.35)
57	RJD	486 (89.83)	JD(U)	26 (4.81)	460 (85.02)	LJP	8 (1.48)	21 (3.88)
58	LJP	193 (53.91)	JD(U)	83 (23.18)	110 (30.73)	RJD	48 (13.41)	34 (9.5)
59	RJD	195 (48.39)	RLSP	105 (26.05)	90 (22.34)	LJP	31 (7.69)	72 (17.87)
60	JD(U)	241 (45.82)	RJD	101 (19.2)	140 (26.62)	LJP	80 (15.21)	104 (19.77)
61	RJD	205 (57.1)	RLSP	56 (15.6)	149 (41.5)	LJP	42 (11.7)	56 (15.6)
62	RJD	362 (77.02)	JD(U)	73 (15.53)	289 (61.49)	LJP	8 (1.7)	27 (5.74)
63	RJD	610 (92.15)	JD(U)	33 (4.98)	577 (87.17)	RLSP	6 (0.91)	13 (1.96)
64	RJD	370 (89.81)	JD(U)	24 (5.83)	346 (83.98)	LJP	5 (1.21)	13 (3.16)
64A	RJD	406 (82.69)	JD(U)	44 (8.96)	362 (73.73)	IND (SSJ)	11 (2.24)	30 (6.11)
65	RJD	578 (96.17)	RLSP	6 (1)	572 (95.17)	IND (SSJ)	6 (1)	11 (1.83)
66	RJD	244 (91.73)	JD(U)	8 (3.01)	236 (88.72)	RLSP	6 (2.26)	8 (3.01)
67	RJD	376 (78.33)	RLSP	32 (6.67)	344 (71.66)	JAPL	31 (6.46)	41 (8.54)
68	RLSP	87 (39.73)	RJD	59 (26.94)	28 (12.79)	JD(U)	28 (12.79)	45 (20.55)
69	RJD	288 (67.61)	RLSP	58 (13.62)	230 (53.99)	JD(U)	21 (4.93)	59 (13.85)
69A	RJD	170 (62.96)	JD(U)	42 (15.56)	128 (47.4)	RLSP	30 (11.11)	28 (10.37)
70	JD(U)	153 (50.66)	RJD	104 (34.44)	49 (16.22)	IND (AD)	11 (3.64)	34 (11.26)
70A	RJD	143 (48.97)	JD(U)	96 (32.88)	47 (16.09)	RLSP	21 (7.19)	32 (10.96)
71	JD(U)	110 (41.04)	RLSP	69 (25.75)	41 (15.29)	RJD	54 (20.15)	35 (13.06)
72	RJD	275 (61.66)	RLSP	128 (28.7)	147 (32.96)	JD(U)	22 (4.93)	21 (4.71)
73	RLSP	130 (41.4)	JD(U)	99 (31.53)	31 (9.87)	RJD	32 (10.19)	53 (16.88)
74	RJD	289 (81.64)	JD(U)	31 (8.76)	258 (72.88)	LJP	19 (5.37)	15 (4.24)

Contd....

Socio-Economic Amenities - Rural

Access to Education Facilities

Particulars	Number of Villages (% of Population)				
	Available	Not Available	If Not Available (Distance of Nearest Facility)		
			A	B	C
Govt. Primary School	135 (96)	32 (4)	0 (0)	32 (4)	0 (0)
Private Primary School	12 (14)	155 (86)	0 (0)	0 (0)	0 (0)
Govt. Middle School	78 (68)	89 (32)	3 (0)	49 (20)	25 (6)
Private Middle School	22 (20)	145 (80)	0 (0)	3 (1)	0 (0)
Govt. Secondary School	17 (19)	150 (81)	1 (0)	48 (28)	72 (36)
Private Secondary School	8 (7)	159 (93)	0 (0)	9 (5)	13 (7)
Govt. Senior Secondary School	17 (19)	150 (81)	1 (0)	48 (28)	72 (36)
Private Senior Secondary School	8 (7)	159 (93)	0 (0)	9 (5)	13 (7)
Govt. Arts and Science Degree College	1 (1)	166 (99)	0 (0)	0 (0)	162 (95)
Private Arts and Science Degree College	4 (4)	163 (96)	0 (0)	0 (0)	0 (0)
Govt. Engineering College	0 (0)	167 (100)	0 (0)	0 (0)	0 (0)
Private Engineering College	0 (0)	167 (100)	0 (0)	0 (0)	167 (100)
Govt. Medicine College	0 (0)	167 (100)	0 (0)	0 (0)	167 (100)
Private Medicine College	0 (0)	167 (100)	0 (0)	0 (0)	0 (0)
Govt. Management Institute	0 (0)	167 (100)	0 (0)	0 (0)	167 (100)
Private Management Institute	0 (0)	167 (100)	0 (0)	0 (0)	0 (0)
Govt. Polytechnic	0 (0)	167 (100)	0 (0)	0 (0)	167 (100)
Private Polytechnic	0 (0)	167 (100)	0 (0)	0 (0)	0 (0)
Govt. Vocational Training School/ITI	0 (0)	167 (100)	0 (0)	0 (0)	167 (100)
Private Vocational Training School/ITI	0 (0)	167 (100)	0 (0)	0 (0)	0 (0)
Govt. Non Formal Training Centre	0 (0)	167 (100)	0 (0)	0 (0)	167 (100)
Private Non Formal Training Centre	0 (0)	167 (100)	0 (0)	0 (0)	0 (0)
Govt. School For Disabled	0 (0)	167 (100)	0 (0)	0 (0)	167 (100)
Private School For Disabled	0 (0)	167 (100)	0 (0)	0 (0)	0 (0)
Government Others	0 (0)	167 (100)	0 (0)	0 (0)	167 (100)
Private Others	0 (0)	167 (100)	0 (0)	0 (0)	0 (0)

Note : Distance A : Less than 5 km; B : Between 5-10 km; C : 10+ km.; Source : Data Analysis is based on 2011 Census.

DISCLAIMER

The Terms of Use and Disclaimer of Datanet India Private Limited (hereinafter referred to as "Datanet") for use of this analysis report of **Nokha Assembly Constituency (Nokha Vidhan Sabha)** :-

1. **Assembly Factbook™** is a Registered Trade Mark owned by Datanet.
2. All the maps are sketched and graphical representation only and have not been drawn to the scale and also not to represent the actual geographical area or boundary of the unit.
3. The data for the aforesaid analysis is based on authentic sources and has been culled from the various publications of Census, CSO and NSSO for district and block level data, various central and state government departments, Central & State Elections Commissions and the concerned Returning Officers' releases, Electoral Rolls, Election results and allied publications, internal assessment, surveys, estimates and analysis. Therefore, certain adjustment of data at micro level may have been done to arrive closer to the macro data.
4. Data have been provided on an "As Is" and "As AVAILABLE" basis
5. The colours shown in the maps or diagram and charts of a particular party, alliance or AC are indicative and do not represent them.
6. This publication which includes maps, sheets, graphs and data would be the property under copyright of Datanet only. The user may use these for its internal study, analysis and research purposes. It's public display, re-selling or any commercial uses by the user are not allowed.
7. Datanet has taken due care and caution in compilation and processing of data and allied information, but does not guarantee the accuracy, adequacy or completeness of any information/analysis and will be not responsible for any errors or omissions or for the results obtained from the use of such information/analysis.
8. All the contents for the publication have been culled from various authentic sources and Datanet reasonably believes such sources to be reliable, but does not make any representations, express or implied as to the accuracy or fitness of use of such information. The information or contents of the information/analysis do not constitute advice and should not be relied upon in making (or refraining from making) any decision. Any reliance placed upon the information provided by Datanet is the sole responsibility and strictly at the user's risk.
9. In no event will Datanet be liable for any damages (including, without limitation, damages for loss of business projects, or loss of profits) arising in contract, tort or otherwise from the use of or inability to use any of its contents, or from any action taken (or refrained from being taken) as a result of using the analysis or any of its contents. Datanet its directors, owners, editors, officials, employees, distributor and agents or any associate will not be liable for any errors in the information contained or any consequences arising from the use of the contents of the provided information/analysis.
10. If any provision of these terms and conditions is held invalid or illegal or unenforceable for any reason by any court of competent jurisdiction, such provision shall be severed and the remainder of provisions of the terms and conditions shall continue in full force and effect as if the Term of Use had been executed with the invalid, illegal or unenforceable provision eliminated.
11. If there are any discrepancies in the information provided, please bring it to attention of Datanet for suitable rectification measures.

**Buy Online This Complete Book At
Datanet India eBooks Store**

www.indiastatpublications.com

or go directly at

[http://www.indiastatpublications.com/
Assembly_factbook/Bihar/Karakat/ Nokha](http://www.indiastatpublications.com/Assembly_factbook/Bihar/Karakat/Nokha)

 **india**stat**elections**

ISBN : 978-93-5313-151-7



9 789353 131517