



Bihar

Assembly Factbook™

Manihari Assembly Constituency



Key Electoral Data of Manihari
Assembly Constituency (Vidhan Sabha)

Bihar

Assembly Factbook™

Manihari Assembly Constituency



Manihari Vidhan Sabha

Editor & Director

Dr. R.K. Thukral

Research Editor

Dr. Shafeeq Rahman

Compiled, Researched and Published by Datanet India Pvt. Ltd.

D-100, 1st Floor,

Okhla Industrial Area, Phase-I,
New Delhi- 110020.

Ph.: 91-11- 43580781-84

Email : support@indiastatpublications.com

Website : www.indiastatelections.com

Online Book Store :

www.indiastatpublications.com

Report No. : AFB/BR-067-0125

ISBN : 978-93-5313-132-6

First Edition : January, 2018

Eighth Updated Edition : January, 2025

Price : Rs. 11500/-

US\$ 310

© Datanet India Pvt. Ltd.

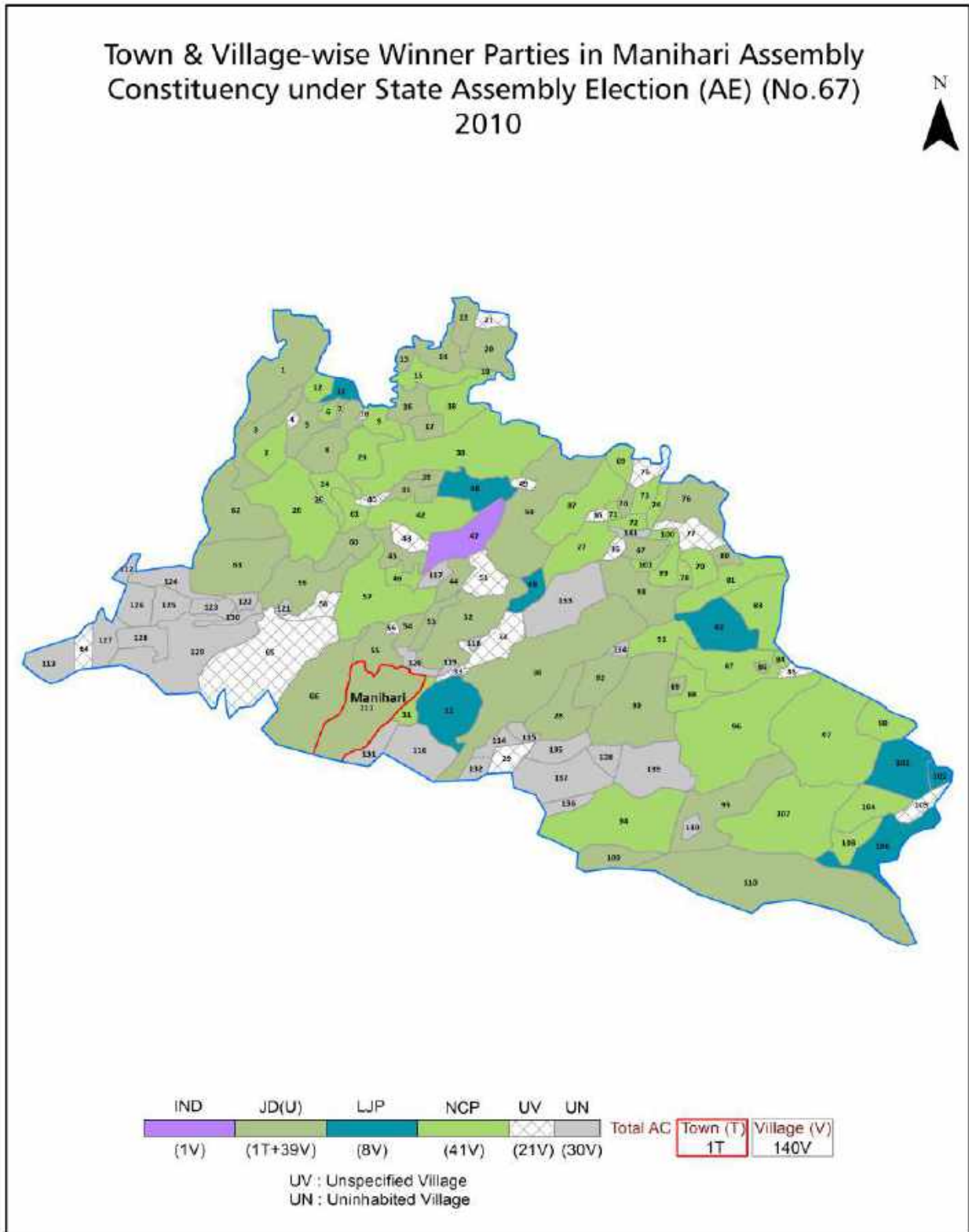
All rights reserved. No part of this book may be reproduced, stored in a retrieval system or transmitted in any form or by any means, mechanical photocopying, photographing, scanning, recording or otherwise without the prior written permission of the publisher. Please refer to Disclaimer at page no. 214 for the use of this publication.

Printed in India

Contents

No.	Particulars	Page No.
	Introduction	
1	Assembly Constituency - (Vidhan Sabha) at a Glance Features of Assembly as per Delimitation Commission of India (2008)	1-2
	Location and Political Maps	
2	Location Map Boundaries of Assembly Constituency - (Vidhan Sabha) in District Boundaries of Assembly Constituency under Parliamentary Constituency - (Lok Sabha) Town & Village-wise Winner Parties- 2024, 2020, 2019, 2014, 2010 and 2009	3-11
	Administrative Setup (2011)	
3	District Sub-district Towns Villages Inhabited Villages Uninhabited Villages Village Panchayat Intermediate Panchayat	11-17
	Demographics (2011)	
4	Population Households Rural/Urban Population Towns and Villages by Population Size Sex Ratio (Total & 0-6 Years) Religious Population Social Population Literacy Rate	18-19
	Electoral Features	
5	Important Dates of Last Elections Held Electors by Gender Service Electors Voters Voters Turnout Polling Stations & Average Number of Electors per Polling Station Electors by Age Group Present Elected Representatives	20-25
	Historical Summary Election Results	
6	Vote Share of Major Parties Winning Margin (Number & Percentage) Polarity of Parties Summary Result of Assembly Segment of Parliamentary Elections 2024, 2019, 2014, 2009, 2004 and 1999 Summary Result of Assembly Elections 2020, 2015, 2010, 2005 (Oct), 2005 (Feb), 2000, 1995, 1990, 1985, 1980, 1977, 1972, 1969, 1967, 1962 and 1957	26-50
	Polling Station Level Election Results	
7	Name and Number of Polling Station 2024, 2020, 2019, 2014, 2010 and 2009 Polling Station-wise Electors, Voters & Voters Turnout 2024, 2020, 2019, 2014, 2010 and 2009 Polling Station wise Elections Results 2024, 2020, 2019, 2014, 2010 and 2009	51-193
	Share of Assembly Constituency	
8	Share of Assembly Constituency - (Vidhan Sabha) in State, District and Parliamentary Constituency - (Lok Sabha)	194
	Socio-Economic Amenities (2011)	
9	Access to Administrative Units Agricultural, Manufacturing and Industrial Commodities Demographic Indicators Education Health & Manpower Drinking Water Supply Sanitation Entertainment and Recreations Infrastructure Power Food Allocation Distribution and Marketing of Agriculture Commodities Infrastructure Transport and Road Infrastructure Communication Banking and Financial Services Land Use Irrigation Source	196-210
10	Abbreviation & Sources	211-213
11	Disclaimer	214

Location & Political Map



Administrative Setup

List of Village Panchayat & Intermediate Panchayat (Block) Name - 2011

Village Name	Village Panchayat Name	Intermediate Panchayat Name
Abdullahpur	Baghmara	Manihari
Ahmadabad	North Amdabad, South Amdabad	Amdabad
Alinagar	South Katakus	Manihari
Baghar	Baghar	Manihari
Baghar Bil	Kebala	Manihari
Baghmara	Baghmara	Manihari
Baghmara Milik	Baghmara	Manihari
Bahadurpur	Nima	Manihari
Baida	Baida	Amdabad
Baijnathpur	Baghmara	Manihari
Bairia	Bairia	Amdabad
Balrampur	North Karimullahpur	Amdabad
Balua Ghatti	Kishanpur	Amdabad
Bangalpara	Durgapur	Amdabad
Basantpur	Phulahra	Mansahi
Bathna	Janglatal	Amdabad
Bauilia	Bauilia	Manihari
Belgachhi	Lakhanpur	Amdabad
Bhakhripur	Kuraitha	Mansahi
Bhawanipur	South Karimullahpur	Amdabad
Bhawanipur	Durgapur	Amdabad
Bhermara	Bhermara	Mansahi
Bhornathi	Baida	Amdabad
Chakband	Morangi	Mansahi
Chaukia Paharpur	Chaukia Paharpur	Amdabad
Chilhania	Janglatal	Amdabad
Chitauria	Chitauria	Mansahi
Dakra	Baida	Amdabad
Dakra	Lakhanpur	Amdabad

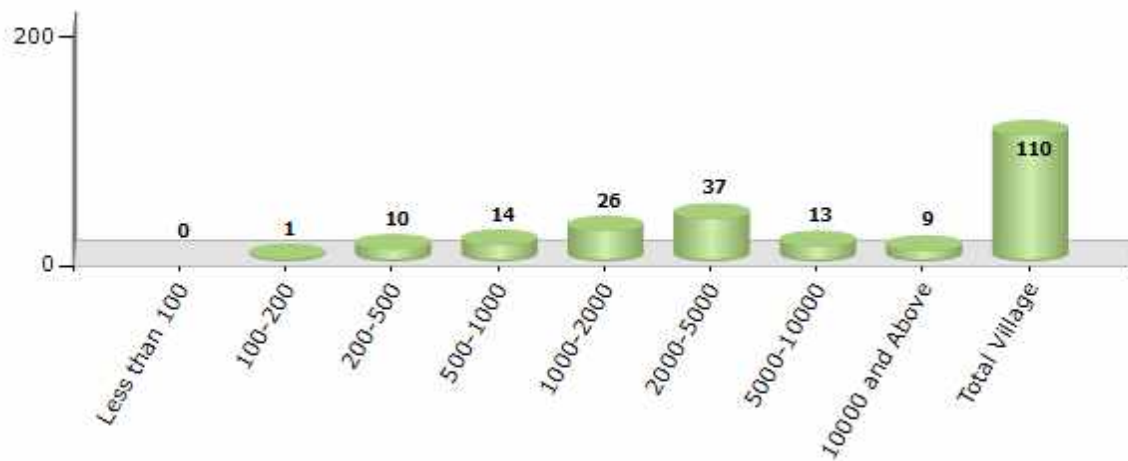
Contd....

Demographics

Number of Villages by Population Size - 2011

Less than 100	100-200	200-500	500-1000	1000-2000	2000-5000	5000-10000	10000 and Above	Total Village
0	1	10	14	26	37	13	9	110

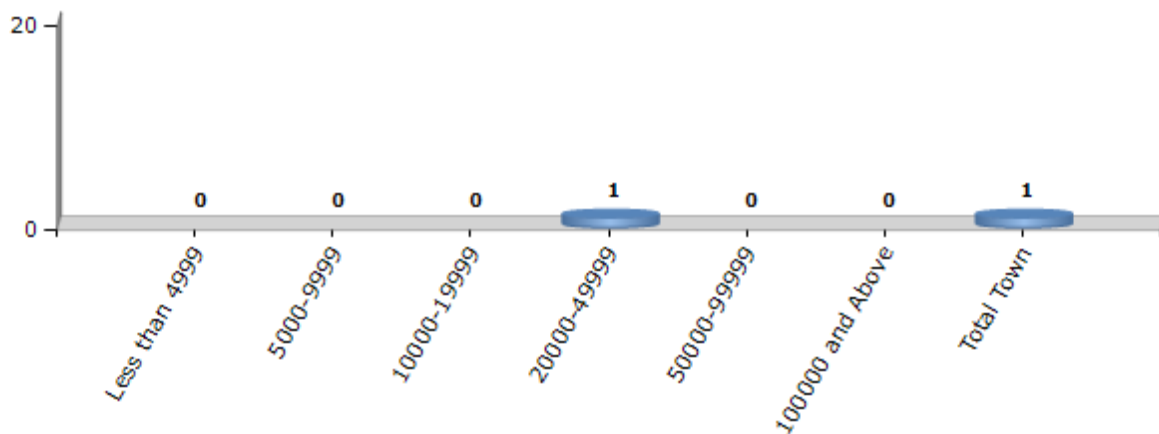
Number of Villages by Population Size - 2011



Number of Towns by Population Size - 2011

Less than 4999	5000-9999	10000-19999	20000-49999	50000-99999	100000 and Above	Total Town
0	0	0	1	0	0	1

Number of Towns by Population Size - 2011

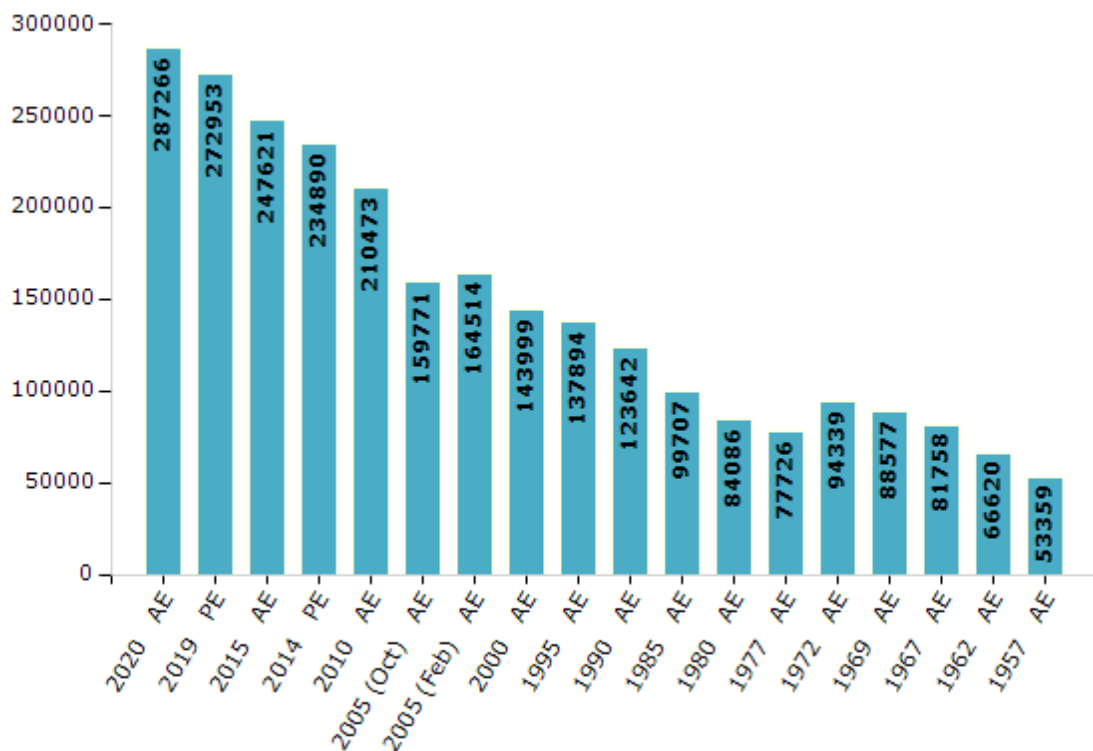


Electoral Features

Electors by Male & Female

Year	Male	Female	Others	Total	Year	Male	Female	Others	Total
2020 AE	150003	137248	15	287266	1995 AE	72671	65223	-	137894
2019 PE	145141	127800	12	272953	1990 AE	70521	53121	-	123642
2015 AE	131997	115614	10	247621	1985 AE	53990	45717	-	99707
2014 PE	125410	109472	8	234890	1980 AE	46188	37898	-	84086
2010 AE	111878	98595	0	210473	1977 AE	42787	34939	-	77726
2009 PE	-	-	-	-	1972 AE	52316	42023	-	94339
2005 (Oct) AE	85568	74203	-	159771	1969 AE	45145	43432	-	88577
2005 (Feb) AE	85371	79143	-	164514	1967 AE	-	-	-	81758
2004 PE	-	-	-	-	1962 AE	-	-	-	66620
2000 AE	76217	67782	-	143999	1957 AE	-	-	-	53359
1999 PE	-	-	-	-	1952 AE	-	-	-	-

Number of Electors



Note : AE : Assembly Election, PE : Assembly Segment of Parliamentary Election

Historical Summary Election Results

Summary Result of Assembly Election - 2015

Candidate Name	Party	Votes	Votes %
Manohar Prasad Singh	INC	61704	38.69
Anil Kumar Oraon	LJP	48024	30.12
Gita Kisku	NCP	7009	4.4
Nagendra Chandra Mandal	SHS	6134	3.85
Shambhu Kumar Suman	IND	6123	3.84
Champay Kisku	IND	5723	3.59
Anirudh Prasad Singh	CPI	5129	3.22
Braj Lal Soren	IND	2976	1.87
Lila Madi	JAPL	1972	1.24
Abhilashita Uraon	BSP	1881	1.18
Nirma Devi	IND	1873	1.17
Prabhulal Uraon	SDPI	1817	1.14
Fulmani Hembram	JMM	1779	1.12
Sinkendra Mandal	IND	1423	0.89
Chhote Lal Chourae	RSWD	1401	0.88
Shiv Kumar Sah	IND	1327	0.83
Dilip Kumar Mandal	IND	980	0.61
Tallu Hembram	BMUP	957	0.6
	NOTA	1233	0.77

Polling Station Level Election Results

Number and Name of Polling Stations (PS) (2020)

Number of Polling Stations	Name of Polling Stations	Number of Polling Stations	Name of Polling Stations
1	Aadresh Madhya Vidyalay Ranipatara Singhiya,Utar Bhag	15	Utkramit Madhya Vidyalay Raghunichak Purab Bhag
1A	Aadresh Madhya Vidyalay Ranipatara Singhiya,Utar Bhag	16	Uttkramit Madhy Vidhyyalay Raghunichak Paschim Bhag
2	Aadresh Madhya Vidyalay Ranipatara Singhiya Madhya Bhag	17	Prathamik Vidyalay Mirakaha
2A	Aadresh Madhya Vidyalay Ranipatara Singhiya Madhya Bhag	18	Rajkiya Madhya Vidhalay Marangi Uttar Bhag
3	Aadersh Madhya Vidyalay Ranipatara Singhiya Dakshin Bhag	19	Rajkiya Madhay Vidhayalaya Marangi Uttar Madhay Bhag
3A	Aadersh Madhya Vidyalay Ranipatara Singhiya Dakshin Bhag	20	Rajkiya Madhya Vidyalay Marangi Dakshin Bhag
4	Panchayat Bhavan Chitoriya Purab Bhag	21	Prathamik Vidyalay Kushaha Uttar Bhag
4A	Panchayat Bhavan Chitoriya Purab Bhag	22	Utkramit Madhya Vidyalay Ghasitola
5	Prathamik Vidyalay Kamat Tola Bich Chitoriya Purab Bhag	23	Prathamik Vidyalay Kushaha Dakshin Bhag
5A	Prathamik Vidyalay Kamat Tola Bich Chitoriya Purab Bhag	23A	Prathamik Vidyalay Kushaha Dakshin Bhag
6	Prathmik Vidhyalay Kamat Tola Bich Chitoriya Paschim Bhag	24	Prathamik Vidyalay Bhakharipur
7	Utkarmit Madhay Vidyalay Chituriya Jaynagar Purab Madhya Bhag	25	Madhya Vidyalay Ekauna Purab Bhag
7A	Utkarmit Madhay Vidyalay Chituriya Jaynagar Purab Madhya Bhag	26	Madhay Vidhalaya Akona Paschim Bhag
8	Madarasa Sahebanagar Uttar Bhag	26A	Madhay Vidhalaya Akona Paschim Bhag
8A	Madarasa Sahebanagar Uttar Bhag	27	Panchayat Bhavan Kuretha
9	Madarasa Sahebanagar Dakshin Bhag	27A	Panchayat Bhavan Kuretha
10	Madarsa Sahebnagar Dakshin Madhay Bhag	28	Prathamik Vidyalay Govindapur
11	Stronat Madhya Vidyalay Manasahi Uttar Bhag	29	Prathamik Vidyalay Pinda
12	Stronat Madhya Vidyalay Manasahi Dakshin Bhag	30	Adrsh Madhya Vidyalay Dhanapada Paschim Bhag
13	Stronat Madhya Vidyalay Manasahi Dakshin Madhya Bhag	30A	Adrsh Madhya Vidyalay Dhanapada Paschim Bhag
14	Panchayat Bhavan Sahebanagar	31	Utkramit Madhya Vidyalay Pakadiya Panchavarga

Contd....

Polling Station Level Election Results

Polling Station-wise Votes Secured by Overall Top Five Parties in Manihari Assembly in Assembly Election (AE) under Katihar Parliamentary Constituency in Bihar (2020)

Number of Polling Station	Winner - Manohar Prasad Singh (INC)	Runner-up - Shambhu Kumar Suman (JD(U))	3rd - Anil Kumar Oraon (LJP)	4th - Rameshwar Hembram (IND)	5th - Goreti Murmu (AIMIM)	NOTA	Other	Total Votes Secured
27	73	247	21	2	3	1	7	354
27A	49	355	35	17	4	17	35	512
28	22	306	89	9	1	14	20	461
29	12	166	65	7	4	7	17	278
30	32	188	64	7	6	10	11	318
30A	142	218	68	13	0	11	22	474
31	289	84	129	7	2	7	15	533
32	115	84	159	3	0	9	17	387
32A	94	31	159	7	1	5	10	307
33	589	36	28	2	8	9	10	682
34	219	99	118	7	6	8	25	482
34A	308	23	71	4	1	5	17	429
35	132	36	204	2	2	10	13	399
36	250	5	58	3	9	8	9	342
36A	159	42	201	12	4	8	13	439
37	271	261	65	8	9	13	24	651
38	88	171	80	7	7	19	30	402
39	29	444	146	10	1	8	27	665
40	61	301	115	16	6	22	27	548
41	11	98	14	2	6	6	5	142
41A	22	474	28	7	8	13	48	600
42	49	216	13	6	13	11	18	326
43	333	23	8	1	2	3	14	384
43A	87	285	57	12	5	5	17	468
44	480	13	21	2	31	9	16	572
44A	129	2	0	0	4	2	1	138
45	127	266	14	7	1	16	24	455
45A	108	188	15	3	0	1	12	327
46	93	526	47	21	8	26	32	753
47	464	93	19	6	30	7	32	651
48	331	71	6	4	13	4	12	441
49	398	40	161	7	2	11	48	667
50	337	113	32	8	11	5	21	527
50A	448	59	27	3	12	5	18	572
51	214	208	163	15	14	18	57	689

Contd....

Polling Station Level Election Results

Winner, Runner-up and 3rd Party Position & Winning Margin According to Polling Stations in Manihari Assembly in Assembly Election (AE) under Katihar Parliamentary Constituency in Bihar (2020)

Polling Station Number	Winner Party	Winner Votes (%)	Runner-up Party	Runner-up Votes (%)	Winning Margin Votes (%)	Third Party	Third Party Votes (%)	Other Votes (%)
52	INC	279 (75)	JD(U)	56 (15.05)	223 (59.95)	LJP	17 (4.57)	20 (5.38)
52A	INC	379 (75.35)	JD(U)	68 (13.52)	311 (61.83)	LJP	24 (4.77)	32 (6.36)
53	INC	438 (69.19)	JD(U)	106 (16.75)	332 (52.44)	LJP	55 (8.69)	34 (5.37)
54	INC	636 (92.98)	LJP	20 (2.92)	616 (90.06)	JD(U)	11 (1.61)	17 (2.49)
54A	INC	198 (65.13)	LJP	85 (27.96)	113 (37.17)	JD(U)	3 (0.99)	18 (5.92)
55	INC	168 (44.8)	JD(U)	137 (36.53)	31 (8.27)	LJP	21 (5.6)	49 (13.07)
55A	INC	137 (42.28)	JD(U)	134 (41.36)	3 (0.92)	LJP	22 (6.79)	31 (9.57)
56	JD(U)	223 (66.17)	INC	54 (16.02)	169 (50.15)	LJP	10 (2.97)	50 (14.84)
56A	INC	241 (64.1)	JD(U)	97 (25.8)	144 (38.3)	LJP	11 (2.93)	27 (7.18)
57	JD(U)	352 (71.11)	INC	65 (13.13)	287 (57.98)	LJP	21 (4.24)	57 (11.52)
58	JD(U)	413 (67.48)	INC	97 (15.85)	316 (51.63)	IND (MS)	21 (3.43)	81 (13.24)
59	INC	171 (64.04)	JD(U)	80 (29.96)	91 (34.08)	LJP	6 (2.25)	10 (3.75)
59A	JD(U)	182 (52.45)	INC	117 (33.72)	65 (18.73)	LJP	9 (2.59)	39 (11.24)
60	INC	198 (60)	JD(U)	111 (33.64)	87 (26.36)	LJP	4 (1.21)	17 (5.15)
60A	JD(U)	216 (63.53)	INC	75 (22.06)	141 (41.47)	IND (RH)	9 (2.65)	40 (11.76)
61	INC	487 (90.69)	AIMIM	17 (3.17)	470 (87.52)	JD(U)	16 (2.98)	17 (3.17)
62	INC	450 (84.11)	JD(U)	51 (9.53)	399 (74.58)	AIMIM	15 (2.8)	19 (3.55)
63	JD(U)	207 (79.01)	INC	21 (8.02)	186 (70.99)	IND (MS)	10 (3.82)	24 (9.16)
63A	JD(U)	243 (78.39)	INC	23 (7.42)	220 (70.97)	AIMIM	8 (2.58)	36 (11.61)
64	JD(U)	104 (59.77)	INC	54 (31.03)	50 (28.74)	AIMIM	3 (1.72)	13 (7.47)
64A	JD(U)	236 (78.93)	INC	31 (10.37)	205 (68.56)	IND (MS)	7 (2.34)	25 (8.36)
65	JD(U)	282 (79.21)	INC	41 (11.52)	241 (67.69)	LJP	7 (1.97)	26 (7.3)
66	JD(U)	336 (60.43)	LJP	88 (15.83)	248 (44.6)	INC	49 (8.81)	83 (14.93)
66A	JD(U)	272 (55.51)	LJP	159 (32.45)	113 (23.06)	INC	22 (4.49)	37 (7.55)
67	INC	242 (50.42)	JD(U)	158 (32.92)	84 (17.5)	LJP	38 (7.92)	42 (8.75)
67A	INC	180 (39.3)	JD(U)	105 (22.93)	75 (16.37)	LJP	105 (22.93)	68 (14.85)
68	INC	217 (46.77)	JD(U)	111 (23.92)	106 (22.85)	LJP	89 (19.18)	47 (10.13)
68A	JD(U)	228 (43.51)	INC	158 (30.15)	70 (13.36)	LJP	53 (10.11)	85 (16.22)
69	INC	220 (70.51)	JD(U)	60 (19.23)	160 (51.28)	AIMIM	16 (5.13)	16 (5.13)
70	JD(U)	236 (72.62)	INC	32 (9.85)	204 (62.77)	LJP	15 (4.62)	42 (12.92)
71	INC	475 (64.28)	AIMIM	87 (11.77)	388 (52.51)	JD(U)	79 (10.69)	98 (13.26)
71A	JD(U)	151 (50)	INC	97 (32.12)	54 (17.88)	AIMIM	21 (6.95)	33 (10.93)
72	INC	232 (44.11)	JD(U)	174 (33.08)	58 (11.03)	LJP	52 (9.89)	68 (12.93)
72A	JD(U)	141 (31.4)	LJP	140 (31.18)	1 (0.22)	INC	105 (23.39)	63 (14.03)
73	INC	653 (86.15)	LJP	46 (6.07)	607 (80.08)	JD(U)	21 (2.77)	38 (5.01)

Contd....

Socio-Economic Amenities - Rural

Access to Education Facilities

Particulars	Number of Villages (% of Population)				
	Available	Not Available	If Not Available (Distance of Nearest Facility)		
			A	B	C
Govt. Primary School	104 (99)	6 (1)	3 (0)	2 (0)	0 (0)
Private Primary School	4 (3)	106 (97)	0 (0)	0 (0)	0 (0)
Govt. Middle School	57 (78)	53 (22)	34 (14)	17 (7)	0 (0)
Private Middle School	3 (1)	107 (99)	0 (0)	0 (0)	0 (0)
Govt. Secondary School	10 (18)	100 (82)	27 (30)	45 (28)	24 (16)
Private Secondary School	4 (8)	106 (92)	0 (0)	0 (0)	0 (0)
Govt. Senior Secondary School	0 (0)	110 (100)	23 (24)	42 (33)	22 (23)
Private Senior Secondary School	3 (8)	107 (92)	0 (0)	4 (2)	16 (10)
Govt. Arts and Science Degree College	1 (0)	109 (100)	9 (8)	40 (32)	60 (60)
Private Arts and Science Degree College	0 (0)	110 (100)	0 (0)	0 (0)	0 (0)
Govt. Engineering College	0 (0)	110 (100)	0 (0)	0 (0)	0 (0)
Private Engineering College	0 (0)	110 (100)	0 (0)	0 (0)	110 (100)
Govt. Medicine College	0 (0)	110 (100)	0 (0)	7 (7)	103 (93)
Private Medicine College	0 (0)	110 (100)	0 (0)	0 (0)	0 (0)
Govt. Management Institute	0 (0)	110 (100)	0 (0)	0 (0)	0 (0)
Private Management Institute	0 (0)	110 (100)	0 (0)	0 (0)	110 (100)
Govt. Polytechnic	1 (1)	109 (99)	0 (0)	1 (0)	60 (64)
Private Polytechnic	11 (9)	99 (91)	0 (0)	23 (14)	14 (11)
Govt. Vocational Training School/ITI	0 (0)	110 (100)	0 (0)	1 (3)	47 (46)
Private Vocational Training School/ITI	14 (24)	96 (76)	0 (0)	13 (5)	35 (22)
Govt. Non Formal Training Centre	3 (1)	107 (99)	0 (0)	0 (0)	8 (7)
Private Non Formal Training Centre	19 (27)	91 (73)	0 (0)	0 (0)	80 (65)
Govt. School For Disabled	0 (0)	110 (100)	0 (0)	0 (0)	110 (100)
Private School For Disabled	0 (0)	110 (100)	0 (0)	0 (0)	0 (0)
Government Others	0 (0)	110 (100)	0 (0)	0 (0)	9 (8)
Private Others	23 (32)	87 (68)	0 (0)	0 (0)	0 (0)

Note : Distance A : Less than 5 km; B : Between 5-10 km; C : 10+ km.; Source : Data Analysis is based on 2011 Census.

DISCLAIMER

The Terms of Use and Disclaimer of Datanet India Private Limited (hereinafter referred to as "Datanet") for use of this analysis report of **Manihari Assembly Constituency (Manihari Vidhan Sabha)** :-

1. **Assembly Factbook™** is a Registered Trade Mark owned by Datanet.
2. All the maps are sketched and graphical representation only and have not been drawn to the scale and also not to represent the actual geographical area or boundary of the unit.
3. The data for the aforesaid analysis is based on authentic sources and has been culled from the various publications of Census, CSO and NSSO for district and block level data, various central and state government departments, Central & State Elections Commissions and the concerned Returning Officers' releases, Electoral Rolls, Election results and allied publications, internal assessment, surveys, estimates and analysis. Therefore, certain adjustment of data at micro level may have been done to arrive closer to the macro data.
4. Data have been provided on an "As Is" and "As AVAILABLE" basis
5. The colours shown in the maps or diagram and charts of a particular party, alliance or AC are indicative and do not represent them.
6. This publication which includes maps, sheets, graphs and data would be the property under copyright of Datanet only. The user may use these for its internal study, analysis and research purposes. It's public display, re-selling or any commercial uses by the user are not allowed.
7. Datanet has taken due care and caution in compilation and processing of data and allied information, but does not guarantee the accuracy, adequacy or completeness of any information/analysis and will be not responsible for any errors or omissions or for the results obtained from the use of such information/analysis.
8. All the contents for the publication have been culled from various authentic sources and Datanet reasonably believes such sources to be reliable, but does not make any representations, express or implied as to the accuracy or fitness of use of such information. The information or contents of the information/analysis do not constitute advice and should not be relied upon in making (or refraining from making) any decision. Any reliance placed upon the information provided by Datanet is the sole responsibility and strictly at the user's risk.
9. In no event will Datanet be liable for any damages (including, without limitation, damages for loss of business projects, or loss of profits) arising in contract, tort or otherwise from the use of or inability to use any of its contents, or from any action taken (or refrained from being taken) as a result of using the analysis or any of its contents. Datanet its directors, owners, editors, officials, employees, distributor and agents or any associate will not be liable for any errors in the information contained or any consequences arising from the use of the contents of the provided information/analysis.
10. If any provision of these terms and conditions is held invalid or illegal or unenforceable for any reason by any court of competent jurisdiction, such provision shall be severed and the remainder of provisions of the terms and conditions shall continue in full force and effect as if the Term of Use had been executed with the invalid, illegal or unenforceable provision eliminated.
11. If there are any discrepancies in the information provided, please bring it to attention of Datanet for suitable rectification measures.

Buy Online This Complete Book At
Datanet India eBooks Store

www.indiastatpublications.com

or go directly at

[http://www.indiastatpublications.com/
Assembly_factbook/Bihar/Katihar/ Manihari](http://www.indiastatpublications.com/Assembly_factbook/Bihar/Katihar/Manihari)

 **india**stat**elections**

ISBN : 978-93-5313-132-6

