



Bihar

# Assembly Factbook™

Bihariganj Assembly Constituency



Key Electoral Data of Bihariganj  
Assembly Constituency (Vidhan Sabha)

Bihar

# Assembly Factbook™

Bihariganj Assembly Constituency



Bihariganj Vidhan Sabha

## **Editor & Director**

Dr. R.K. Thukral

## **Research Editor**

Dr. Shafeeq Rahman

## **Compiled, Researched and Published by Datanet India Pvt. Ltd.**

D-100, 1st Floor,

Okhla Industrial Area, Phase-I,  
New Delhi- 110020.

Ph.: 91-11- 43580781-84

Email : support@indiastatpublications.com

Website : www.indiastatelections.com

## **Online Book Store :**

www.indiastatpublications.com

**Report No. :** AFB/BR-071-0624

**ISBN :** 978-93-5313-058-9

**First Edition :** January, 2018

**Seventh Updated Edition :** June, 2024

**Price :** Rs. 11500/-

US\$ 310

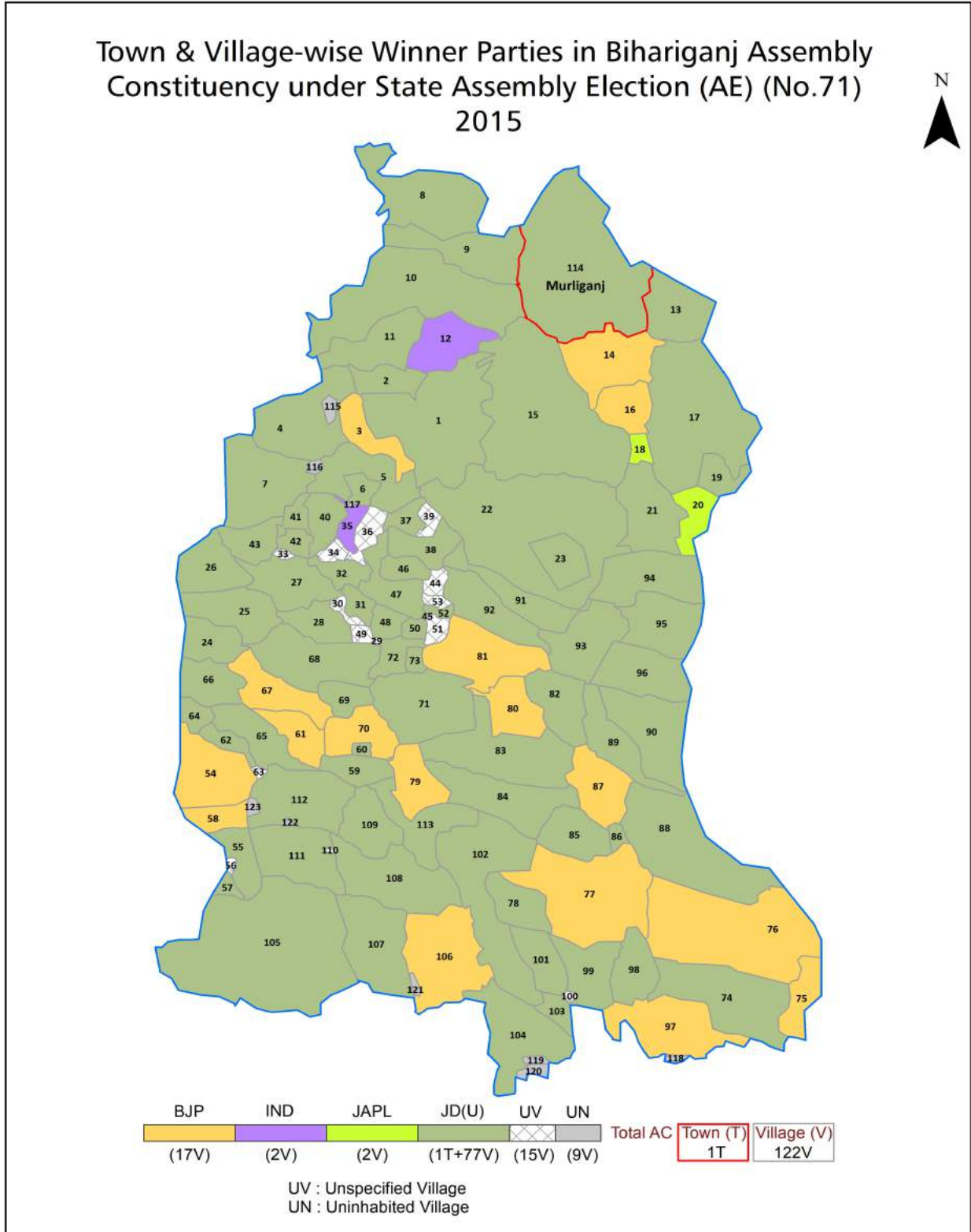
**© Datanet India Pvt. Ltd.**

All rights reserved. No part of this book may be reproduced, stored in a retrieval system or transmitted in any form or by any means, mechanical photocopying, photographing, scanning, recording or otherwise without the prior written permission of the publisher. Please refer to Disclaimer at page no. 239 for the use of this publication.

Printed in India

No.	Particulars	Page No.
	<b>Introduction</b>	
1	Assembly Constituency - (Vidhan Sabha) at a Glance   Features of Assembly as per Delimitation Commission of India (2008)	1-2
	<b>Location and Political Maps</b>	
2	Location Map   Boundaries of Assembly Constituency - (Vidhan Sabha) in District   Boundaries of Assembly Constituency under Parliamentary Constituency - (Lok Sabha)   Town & Village-wise Winner Parties- 2024, 2020, 2019, 2015, 2014, 2010 and 2009	3-11
	<b>Administrative Setup (2011)</b>	
3	District   Sub-district   Towns   Villages   Inhabited Villages   Uninhabited Villages   Village Panchayat   Intermediate Panchayat	12-18
	<b>Demographics (2011)</b>	
4	Population   Households   Rural/Urban Population   Towns and Villages by Population Size   Sex Ratio (Total & 0-6 Years)   Religious Population   Social Population   Literacy Rate	19-20
	<b>Electoral Features</b>	
5	Important Dates of Last Elections Held   Electors by Gender   Service Electors   Voters   Voters Turnout   Polling Stations & Average Number of Electors per Polling Station   Electors by Age Group   Present Elected Representatives	21-26
	<b>Historical Summary Election Results</b>	
6	Vote Share of Major Parties   Winning Margin (Number & Percentage)   Polarity of Parties   Summary Result of Assembly Segment of Parliamentary Elections 2024, 2019, 2014 and 2009   Summary Result of Assembly Elections 2020, 2015 and 2010	27-36
	<b>Polling Station Level Election Results</b>	
7	Name and Number of Polling Station 2024, 2020, 2019, 2015, 2014, 2010 and 2009   Polling Station-wise Electors, Voters & Voters Turnout 2024, 2020, 2019, 2015, 2014, 2010 and 2009   Polling Station wise Elections Results 2024, 2020, 2019, 2015, 2014, 2010 and 2009	37-218
	<b>Share of Assembly Constituency</b>	
8	Share of Assembly Constituency - (Vidhan Sabha) in State, District and Parliamentary Constituency - (Lok Sabha)	219
	<b>Socio-Economic Amenities (2011)</b>	
9	Access to Administrative Units   Agricultural, Manufacturing and Industrial Commodities   Demographic Indicators   Education   Health & Manpower   Drinking Water Supply   Sanitation   Entertainment and Recreations Infrastructure   Power   Food Allocation Distribution and Marketing of Agriculture Commodities Infrastructure   Transport and Road Infrastructure   Communication   Banking and Financial Services   Land Use   Irrigation Source	221-235
10	<b>Abbreviation &amp; Sources</b>	236-238
11	<b>Disclaimer</b>	239

Location & Political Map



## Administrative Setup

### List of Village Panchayat & Intermediate Panchayat (Block) Name - 2011

Village Name	Village Panchayat Name	Intermediate Panchayat Name
Amari Dharhra	Singhiyan	Murliganj
Amauja	Peernagar	Gwalpara
Anandpur	Barahi Anandpura	Kishanganj
Arazi Sukhasan	Sukhasan	Gwalpara
Babhangawan	Sukhasan	Gwalpara
Babhangawan	Bbhangama	Bihariganj
Bajjnathpur	Rajganj	Bihariganj
Barahi	Barahi Anandpura	Kishanganj
Barhya	Hathiodha	Bihariganj
Belahi	Padriya	Bihariganj
Bhaluahi	Jhladee	Gwalpara
Bhaluahi Arazi	Jhladee	Gwalpara
Bihariganj	Bihariganj	Bihariganj
Bindraban	Dinapatti Sakhua	Murliganj
Birgaon	Wirganw Chatra	Gwalpara
Birgaon	Wirganw Chatra	Gwalpara
Birgaon	Wirganw Chatra	Gwalpara
Biri Ranpal	Biri Ravpal	Kishanganj
Bishunpur	Bihariganj	Bihariganj
Bishunpur Amuana	Khokhsee	Gwalpara
Bishunpur Arar	Reshna	Gwalpara
Bishunpur Kantahi	Teme Bhela	Gwalpara
Biswari	Wishwadee	Gwalpara
Chakla Gopal Jha	Teme Bhela	Gwalpara
Chakla Pitambar Misra	Teme Bhela	Gwalpara
Chatra Badh	Wirganw Chatra	Gwalpara
Chatra Chak	Wirganw Chatra	Gwalpara
Debail	Biri Ravpal	Kishanganj
Depura	Reshna	Gwalpara

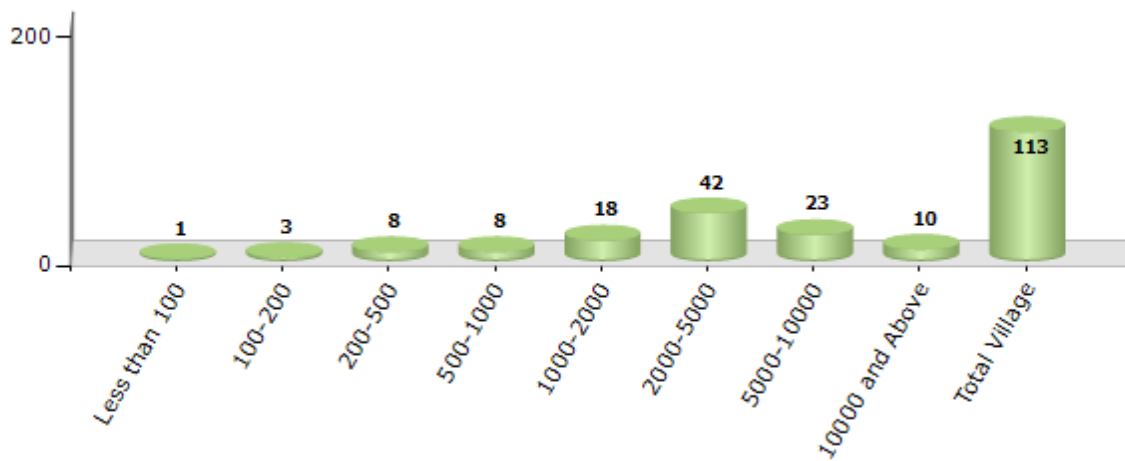
Contd....

Demographics

Number of Villages by Population Size - 2011

Less than 100	100-200	200-500	500-1000	1000-2000	2000-5000	5000-10000	10000 and Above	Total Village
1	3	8	8	18	42	23	10	113

Number of Villages by Population Size - 2011



Number of Towns by Population Size - 2011

Less than 4999	5000-9999	10000-19999	20000-49999	50000-99999	100000 and Above	Total Town
0	0	0	1	0	0	1

Number of Towns by Population Size - 2011

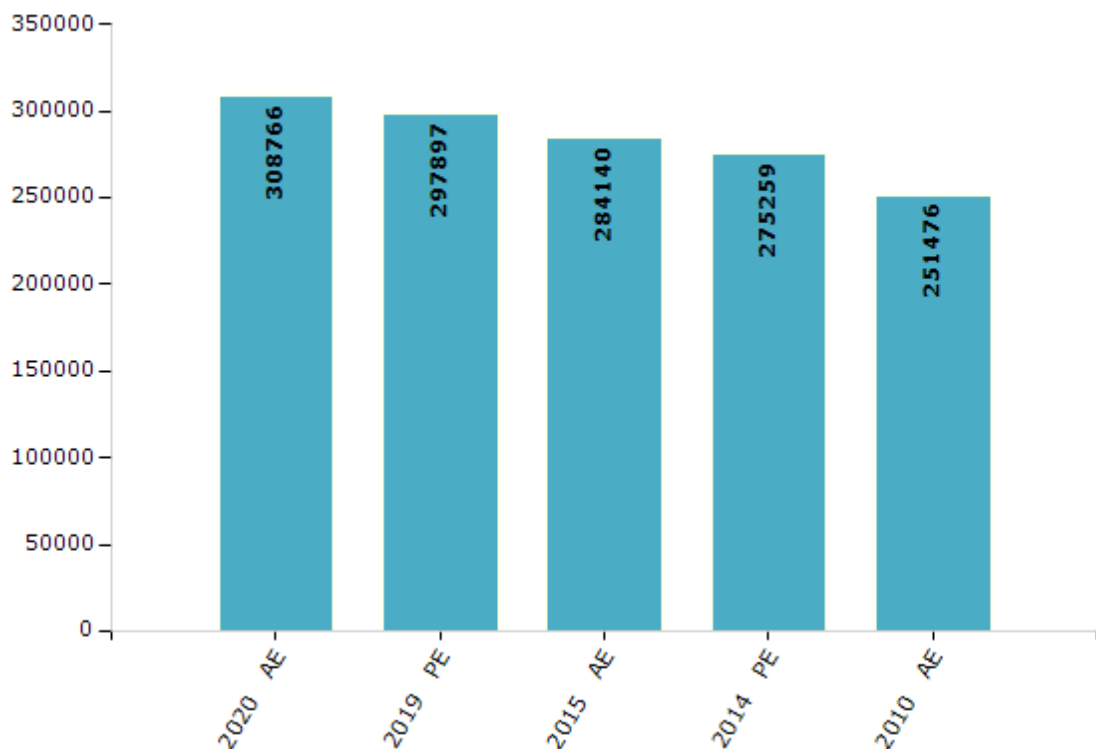


## Electoral Features

### Electors by Male & Female

Year	Male	Female	Others	Total	Year	Male	Female	Others	Total
2020 AE	159981	148775	10	308766	1995 AE	-	-	-	-
2019 PE	154371	143518	8	297897	1990 AE	-	-	-	-
2015 AE	147321	136811	8	284140	1985 AE	-	-	-	-
2014 PE	142732	132520	7	275259	1980 AE	-	-	-	-
2010 AE	132365	119111	0	251476	1977 AE	-	-	-	-
2009 PE	-	-	-	-	1972 AE	-	-	-	-
2005 (Oct) AE	-	-	-	-	1969 AE	-	-	-	-
2005 (Feb) AE	-	-	-	-	1967 AE	-	-	-	-
2004 PE	-	-	-	-	1962 AE	-	-	-	-
2000 AE	-	-	-	-	1957 AE	-	-	-	-
1999 PE	-	-	-	-	1952 AE	-	-	-	-

Number of Electors



**Note :** AE : Assembly Election, PE : Assembly Segment of Parliamentary Election



## Historical Summary Election Results

### Summary Result of Assembly Election - 2015

Candidate Name	Party	Votes	Votes %
Niranjan Kumar Mehta	JD(U)	78361	45.26
Ravindra Charan Yadav	BJP	49108	28.36
Swet Kamal	JAPL	12218	7.06
Brahamchari Vishnu Prabhakar	IND	4915	2.84
Nikhil Kumar Jha	CPI	4653	2.69
Shanti Devi	IND	4339	2.51
Manoj Kumar Yadav	IND	4318	2.49
Khwaja Gulam Husain	IND	3520	2.03
Pratibha Kumari	BSP	1859	1.07
Bebi Devi	IND	1541	0.89
Mithilesh Kumar Mehta	JMM	1292	0.75
Abhay Chandra Jha	SHS	1287	0.74
Kamlesh Mehta	IND	1149	0.66
Navin Kumar Mehta	BVM	868	0.5
Kaushal Kumar	BJKD	841	0.49
	NOTA	2868	1.66

## Polling Station Level Election Results

### Number and Name of Polling Stations (PS) (2020)

Number of Polling Stations	Name of Polling Stations	Number of Polling Stations	Name of Polling Stations
1	Utakramit Madhya Vidyalay, Devana Rahi Baya Bhag	13A	Madhya Vidyalay, Ramapur, Madhya Bhag
1A	Utakramit Madhya Vidyalay, Devana Rahi Baya Bhag	14	Madhya Vidyalay, Rampur, Purab Bhag
2	Utkarmit Madhay Vidyalay Devnarhi Daya Bhag	15	Soni Madhya Vidyalay Kashipur, Paschim Bhag
3	Madhya Vidyalay, Joragama Uttar Bhag	15A	Soni Madhya Vidyalay Kashipur, Paschim Bhag
3A	Madhya Vidyalay, Joragama Uttar Bhag	16	Soni Middle Vidyalay Kashipur Uttar Bhag
4	Madhya Vidyalay Jorgama Madhya Bhag	17	Soni Madhya Vidyalay Kashipur, Madhya Bhag
4A	Madhya Vidyalay Jorgama Madhya Bhag	18	Soni Madhya Vidyalay Kashipur, Dakshin Bhag
5	Madhya Vidyalay, Joragama Dakshin Bhag	18A	Soni Madhya Vidyalay Kashipur, Dakshin Bhag
5A	Madhya Vidyalay, Joragama Dakshin Bhag	19	Soni Madhya Vidyalay Kashipur, Purab Bhag Madhay
6	Utakramit Madhya Vidyalay, Miraganj Dakshin Bhag	20	Soni Madhya Vidyalay Kashipur Purab Bhag
6A	Utakramit Madhya Vidyalay, Miraganj Dakshin Bhag	21	Chandramani Kanya Madhya Vidyalay, Muraliganj Jayrampur, Uttar Bhag
7	Utakramit Madhya Vidyalay, Miraganj Uttari Bhag	21A	Chandramani Kanya Madhya Vidyalay, Muraliganj Jayrampur, Uttar Bhag
7A	Utakramit Madhya Vidyalay, Miraganj Uttari Bhag	22	Chandramani Kanay Madhya Vidyalay, Muraliganj Jayrampur, Dakshin Bhag
8	Utakramit Madhya Vidyalay, Rampur Tapara Purab Bhag	22A	Chandramani Kanay Madhya Vidyalay, Muraliganj Jayrampur, Dakshin Bhag
9	Utakramit Madhya Vidyalay, Rampur Tapra Paschim Bhag	23	Balika Madhya Vidyalay, Muraliganj Purab Bhag
9A	Utakramit Madhya Vidyalay, Rampur Tapra Paschim Bhag	24	Balika Madhya Vidyalay Murliganj Paschim Bhag
10	Utakramit Madhya Vidyalay, Terasi Baya Bhag	25	Ardash Madhya Vidyalay, Muraliganj, Pashchimi Bhag
10A	Utakramit Madhya Vidyalay, Terasi Baya Bhag	25A	Ardash Madhya Vidyalay, Muraliganj, Pashchimi Bhag
11	Madhya Vidyalay, Ramapur Uttari Bhag	26	Adarsh Madhya Vidyalay, Muraliganj, Purwi Bhag
12	Madhya Vidyalay, Ramapur Dakshini Bhag	26A	Adarsh Madhya Vidyalay, Muraliganj, Purwi Bhag
13	Madhya Vidyalay, Ramapur, Madhya Bhag	27	Adarsh Madhya Vidyalay Murliganj Madhya Bhag

Contd....

## Polling Station Level Election Results

### Polling Station-wise Votes Secured by Overall Top Five Parties in Biharianj Assembly in Assembly Election (AE) under Madhepura Parliamentary Constituency in Bihar (2020)

Number of Polling Station	Winner - Niranjan Kumar Mehta (JD(U))	Runner-up - Subhashini Bundela Alias Subhashini Sharad Yadav (INC)	3rd - Vijay Kumar Singh (LJP)	4th - Prabhash Kumar (JAPL)	5th - Shakuntala Devi (SANVP)	NOTA	Other	Total Votes Secured
23	286	75	18	11	5	5	15	415
24	215	174	9	8	3	6	43	458
25	148	107	5	10	12	0	31	313
25A	75	208	8	18	6	0	26	341
26	170	67	14	4	3	2	33	293
26A	158	119	5	16	7	1	35	341
27	84	190	4	6	6	0	27	317
27A	160	55	7	3	2	1	17	245
28	148	57	354	5	1	10	75	650
29	192	120	188	6	15	8	121	650
30	196	32	10	13	5	1	23	280
30A	234	44	9	9	9	5	17	327
31	321	31	17	10	18	10	43	450
32	169	296	57	8	17	2	52	601
33	300	160	40	24	28	8	106	666
34	194	48	15	24	6	0	21	308
34A	238	86	17	10	9	4	47	411
35	331	68	17	5	19	8	55	503
36	83	200	3	16	14	2	46	364
36A	12	296	8	11	5	1	56	389
37	27	298	20	10	6	2	44	407
38	55	336	14	10	13	2	85	515
39	113	164	15	26	14	15	62	409
40	105	331	13	5	12	6	84	556
41	162	80	35	4	10	4	66	361
41A	120	233	19	9	6	2	58	447
42	118	157	23	2	13	6	136	455
43	123	128	19	9	5	8	101	393
44	50	239	6	6	11	2	52	366
44A	182	82	13	8	4	0	19	308
45	112	182	9	7	11	0	25	346
46	214	73	10	4	12	7	47	367
47	166	43	51	12	11	2	26	311
47A	154	129	51	4	9	8	68	423
48	179	27	86	10	17	4	38	361

Contd....

## Polling Station Level Election Results

### Winner, Runner-up and 3rd Party Position & Winning Margin According to Polling Stations in Biharianj Assembly in Assembly Election (AE) under Madhepura Parliamentary Constituency in Bihar (2020)

Polling Station Number	Winner Party	Winner Votes (%)	Runner-up Party	Runner-up Votes (%)	Winning Margin Votes (%)	Third Party	Third Party Votes (%)	Other Votes (%)
48A	LJP	165 (45.33)	JD(U)	112 (30.77)	53 (14.56)	INC	22 (6.04)	65 (17.86)
49	INC	168 (49.12)	JD(U)	119 (34.8)	49 (14.32)	SANVP	13 (3.8)	42 (12.28)
49A	INC	93 (30.59)	JD(U)	67 (22.04)	26 (8.55)	LJP	60 (19.74)	84 (27.63)
50	JD(U)	184 (51.54)	INC	129 (36.13)	55 (15.41)	JAPL	11 (3.08)	33 (9.24)
50A	INC	199 (55.59)	JD(U)	102 (28.49)	97 (27.1)	JAPL	11 (3.07)	46 (12.85)
51	INC	249 (70.94)	JD(U)	16 (4.56)	233 (66.38)	LJP	12 (3.42)	74 (21.08)
51A	INC	163 (54.33)	JD(U)	49 (16.33)	114 (38)	PSS	17 (5.67)	71 (23.67)
52	INC	135 (42.99)	LJP	92 (29.3)	43 (13.69)	JD(U)	51 (16.24)	36 (11.46)
52A	INC	206 (51.37)	LJP	98 (24.44)	108 (26.93)	JD(U)	39 (9.73)	58 (14.46)
53	INC	331 (76.62)	JD(U)	30 (6.94)	301 (69.68)	LJP	26 (6.02)	45 (10.42)
54	INC	287 (59.79)	JD(U)	97 (20.21)	190 (39.58)	JAPL	17 (3.54)	79 (16.46)
55	INC	492 (76.04)	JD(U)	42 (6.49)	450 (69.55)	PSS	28 (4.33)	85 (13.14)
56	INC	318 (73.78)	JD(U)	39 (9.05)	279 (64.73)	IND (AD)	12 (2.78)	62 (14.39)
56A	INC	282 (64.83)	JD(U)	80 (18.39)	202 (46.44)	RSTJLKPS	10 (2.3)	63 (14.48)
57	JD(U)	297 (74.06)	INC	37 (9.23)	260 (64.83)	SANVP	16 (3.99)	51 (12.72)
57A	JD(U)	310 (73.29)	INC	42 (9.93)	268 (63.36)	SANVP	16 (3.78)	55 (13)
58	JD(U)	227 (54.18)	INC	76 (18.14)	151 (36.04)	LJP	23 (5.49)	93 (22.2)
58A	JD(U)	341 (77.5)	LJP	29 (6.59)	312 (70.91)	INC	26 (5.91)	44 (10)
59	INC	249 (70.94)	JAPL	27 (7.69)	222 (63.25)	JD(U)	14 (3.99)	61 (17.38)
59A	INC	118 (33.05)	LJP	116 (32.49)	2 (0.56)	PSS	15 (4.2)	108 (30.25)
60	INC	340 (75.39)	JD(U)	50 (11.09)	290 (64.3)	JAPL	11 (2.44)	50 (11.09)
60A	INC	315 (77.97)	JD(U)	19 (4.7)	296 (73.27)	JAPL	13 (3.22)	57 (14.11)
61	JD(U)	148 (45.68)	INC	58 (17.9)	90 (27.78)	JAPL	56 (17.28)	62 (19.14)
61A	JD(U)	170 (50.6)	INC	98 (29.17)	72 (21.43)	JAPL	27 (8.04)	41 (12.2)
62	INC	212 (50.6)	JD(U)	76 (18.14)	136 (32.46)	PSS	25 (5.97)	106 (25.3)
62A	INC	152 (50.67)	JD(U)	54 (18)	98 (32.67)	SANVP	14 (4.67)	80 (26.67)
63	INC	211 (55.09)	JD(U)	75 (19.58)	136 (35.51)	PSS	25 (6.53)	72 (18.8)
63A	INC	161 (45.61)	JD(U)	117 (33.14)	44 (12.47)	SANVP	14 (3.97)	61 (17.28)
64	INC	243 (50.1)	JD(U)	101 (20.82)	142 (29.28)	SANVP	29 (5.98)	112 (23.09)
65	INC	257 (49.23)	JD(U)	103 (19.73)	154 (29.5)	LJP	32 (6.13)	130 (24.9)
66	INC	327 (62.05)	JD(U)	64 (12.14)	263 (49.91)	JAPL	37 (7.02)	99 (18.79)
67	JD(U)	250 (55.31)	INC	87 (19.25)	163 (36.06)	SANVP	30 (6.64)	85 (18.81)
68	INC	93 (25.76)	JD(U)	82 (22.71)	11 (3.05)	IND (AKH)	61 (16.9)	125 (34.63)
68A	IND (AKH)	96 (29.18)	JD(U)	46 (13.98)	50 (15.2)	INC	32 (9.73)	155 (47.11)
69	INC	76 (35.35)	JD(U)	72 (33.49)	4 (1.86)	JAPL	25 (11.63)	42 (19.53)

Contd....

**Socio-Economic Amenities - Rural**

**Access to Education Facilities**

Particulars	Number of Villages (% of Population)				
	Available	Not Available	If Not Available (Distance of Nearest Facility)		
			A	B	C
Govt. Primary School	109 (100)	4 (0)	4 (0)	0 (0)	0 (0)
Private Primary School	19 (22)	94 (78)	0 (0)	0 (0)	0 (0)
Govt. Middle School	89 (94)	24 (6)	22 (5)	1 (0)	0 (0)
Private Middle School	4 (6)	109 (94)	0 (0)	0 (0)	0 (0)
Govt. Secondary School	17 (22)	96 (78)	31 (22)	58 (52)	6 (2)
Private Secondary School	3 (6)	110 (94)	0 (0)	0 (0)	0 (0)
Govt. Senior Secondary School	9 (14)	104 (86)	28 (27)	62 (51)	14 (8)
Private Senior Secondary School	2 (4)	111 (96)	0 (0)	0 (0)	0 (0)
Govt. Arts and Science Degree College	6 (12)	107 (88)	0 (0)	0 (0)	105 (87)
Private Arts and Science Degree College	0 (0)	113 (100)	0 (0)	0 (0)	2 (1)
Govt. Engineering College	0 (0)	113 (100)	0 (0)	0 (0)	0 (0)
Private Engineering College	0 (0)	113 (100)	0 (0)	0 (0)	113 (100)
Govt. Medicine College	0 (0)	113 (100)	0 (0)	0 (0)	17 (18)
Private Medicine College	0 (0)	113 (100)	0 (0)	0 (0)	96 (82)
Govt. Management Institute	0 (0)	113 (100)	0 (0)	0 (0)	17 (18)
Private Management Institute	0 (0)	113 (100)	0 (0)	0 (0)	96 (82)
Govt. Polytechnic	0 (0)	113 (100)	0 (0)	0 (0)	23 (29)
Private Polytechnic	0 (0)	113 (100)	0 (0)	0 (0)	90 (71)
Govt. Vocational Training School/ITI	0 (0)	113 (100)	0 (0)	0 (0)	0 (0)
Private Vocational Training School/ITI	0 (0)	113 (100)	3 (4)	27 (25)	83 (71)
Govt. Non Formal Training Centre	0 (0)	113 (100)	0 (0)	1 (0)	106 (95)
Private Non Formal Training Centre	0 (0)	113 (100)	0 (0)	0 (0)	6 (5)
Govt. School For Disabled	0 (0)	113 (100)	0 (0)	0 (0)	23 (29)
Private School For Disabled	0 (0)	113 (100)	0 (0)	0 (0)	90 (71)
Government Others	4 (10)	109 (90)	0 (0)	0 (0)	1 (0)
Private Others	0 (0)	113 (100)	0 (0)	0 (0)	16 (15)

Note : Distance A : Less than 5 km; B : Between 5-10 km; C : 10+ km.; Source : Data Analysis is based on 2011 Census.

## DISCLAIMER

The Terms of Use and Disclaimer of Datanet India Private Limited (hereinafter referred to as "Datanet") for use of this analysis report of **Bihariganj Assembly Constituency (Bihariganj Vidhan Sabha)** :-

1. **Assembly Factbook™** is a Registered Trade Mark owned by Datanet.
2. All the maps are sketched and graphical representation only and have not been drawn to the scale and also not to represent the actual geographical area or boundary of the unit.
3. The data for the aforesaid analysis is based on authentic sources and has been culled from the various publications of Census, CSO and NSSO for district and block level data, various central and state government departments, Central & State Elections Commissions and the concerned Returning Officers' releases, Electoral Rolls, Election results and allied publications, internal assessment, surveys, estimates and analysis. Therefore, certain adjustment of data at micro level may have been done to arrive closer to the macro data.
4. Data have been provided on an "As Is" and "As AVAILABLE" basis
5. The colours shown in the maps or diagram and charts of a particular party, alliance or AC are indicative and do not represent them.
6. This publication which includes maps, sheets, graphs and data would be the property under copyright of Datanet only. The user may use these for its internal study, analysis and research purposes. It's public display, re-selling or any commercial uses by the user are not allowed.
7. Datanet has taken due care and caution in compilation and processing of data and allied information, but does not guarantee the accuracy, adequacy or completeness of any information/analysis and will be not responsible for any errors or omissions or for the results obtained from the use of such information/analysis.
8. All the contents for the publication have been culled from various authentic sources and Datanet reasonably believes such sources to be reliable, but does not make any representations, express or implied as to the accuracy or fitness of use of such information. The information or contents of the information/analysis do not constitute advice and should not be relied upon in making (or refraining from making) any decision. Any reliance placed upon the information provided by Datanet is the sole responsibility and strictly at the user's risk.
9. In no event will Datanet be liable for any damages (including, without limitation, damages for loss of business projects, or loss of profits) arising in contract, tort or otherwise from the use of or inability to use any of its contents, or from any action taken (or refrained from being taken) as a result of using the analysis or any of its contents. Datanet its directors, owners, editors, officials, employees, distributor and agents or any associate will not be liable for any errors in the information contained or any consequences arising from the use of the contents of the provided information/analysis.
10. If any provision of these terms and conditions is held invalid or illegal or unenforceable for any reason by any court of competent jurisdiction, such provision shall be severed and the remainder of provisions of the terms and conditions shall continue in full force and effect as if the Term of Use had been executed with the invalid, illegal or unenforceable provision eliminated.
11. If there are any discrepancies in the information provided, please bring it to attention of Datanet for suitable rectification measures.

**Buy Online This Complete Book At  
Datanet India eBooks Store**

[www.indiastatpublications.com](http://www.indiastatpublications.com)

or go directly at

[http://www.indiastatpublications.com/  
Assembly\\_factbook/Bihar/Madhepura/ Bihariganj](http://www.indiastatpublications.com/Assembly_factbook/Bihar/Madhepura/Bihariganj)

 **india**stat**elections**

ISBN : 978-93-5313-058-9



9 789353 130589