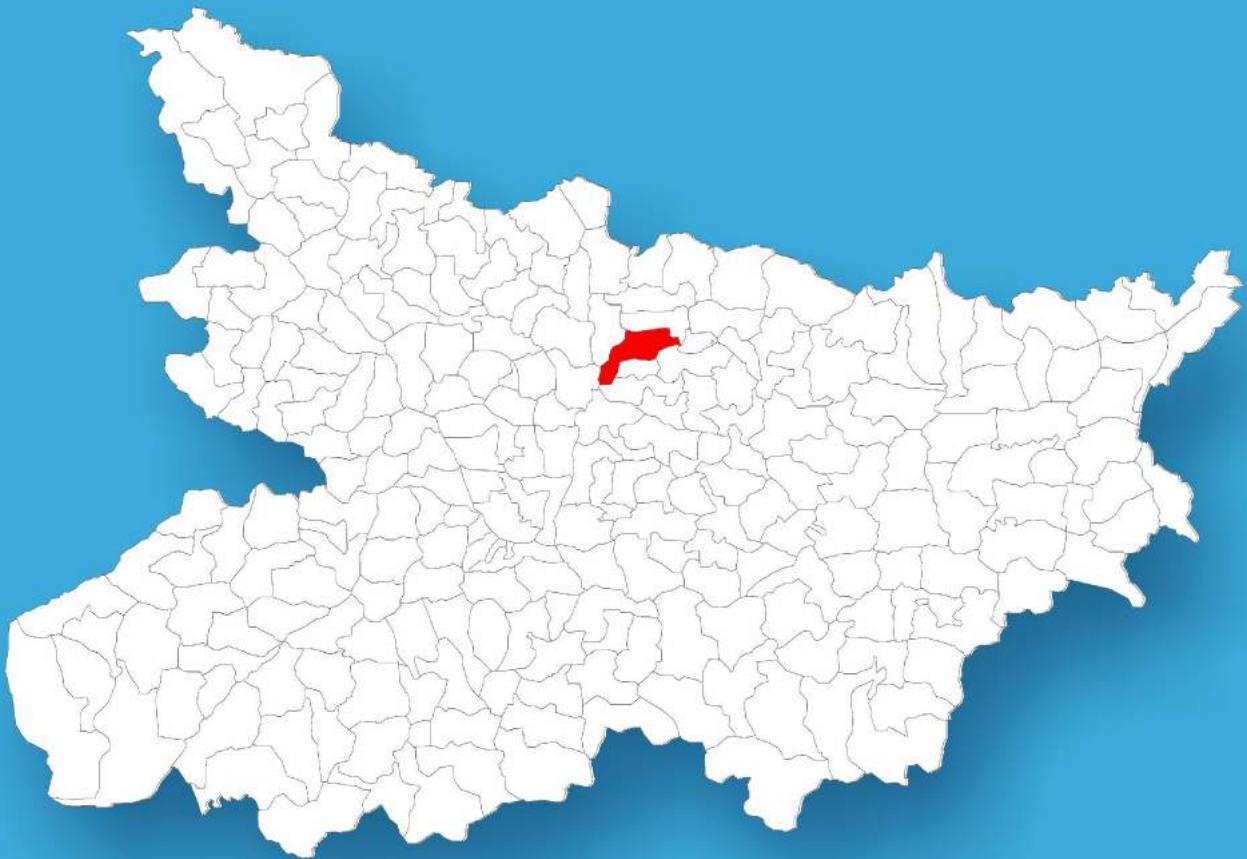




Bihar

Assembly Factbook™

Keoti Assembly Constituency



Key Electoral Data of Keoti
Assembly Constituency (Vidhan Sabha)

Bihar

Assembly Factbook™

Keoti Assembly Constituency



Keoti Vidhan Sabha

Editor & Director

Dr. R.K. Thukral

Research Editor

Dr. Shafeeq Rahman

Compiled, Researched and Published by Datanet India Pvt. Ltd.

D-100, 1st Floor,

Okhla Industrial Area, Phase-I,
New Delhi- 110020.

Ph.: 91-11- 43580781-84

Email : support@indiastatpublications.com

Website : www.indiastatelections.com

Online Book Store :

www.indiastatpublications.com

Report No. : AFB/BR-086-0123

ISBN : 978-93-5313-108-1

First Edition : January, 2018

Sixth Updated Edition : January, 2023

Price : Rs. 11500/-

US\$ 310

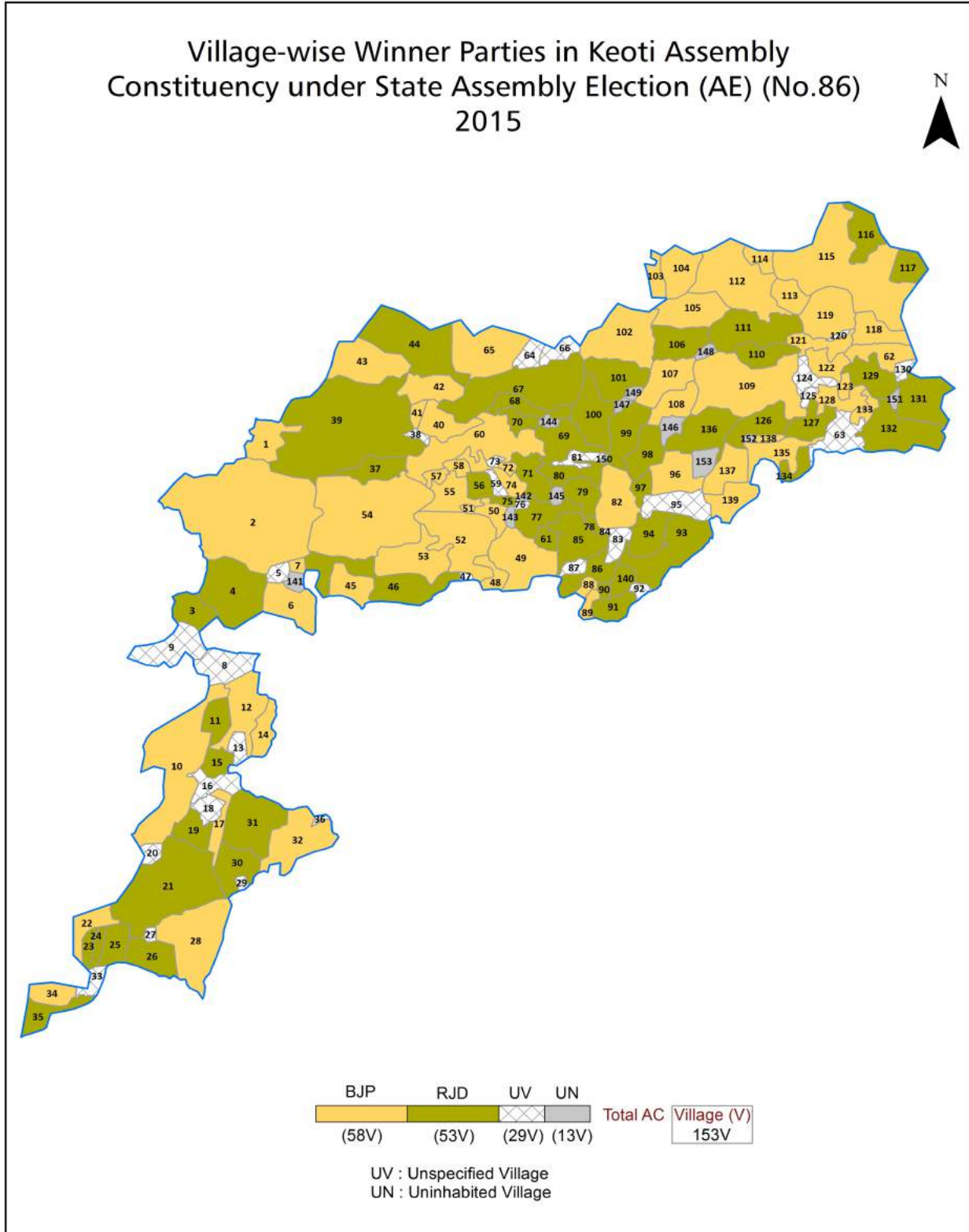
© **Datanet India Pvt. Ltd.**

All rights reserved. No part of this book may be reproduced, stored in a retrieval system or transmitted in any form or by any means, mechanical photocopying, photographing, scanning, recording or otherwise without the prior written permission of the publisher. Please refer to Disclaimer at page no. 246 for the use of this publication.

Printed in India

No.	Particulars	Page No.
	Introduction	
1	Assembly Constituency - (Vidhan Sabha) at a Glance Features of Assembly as per Delimitation Commission of India (2008)	1-2
	Location and Political Maps	
2	Location Map Boundaries of Assembly Constituency - (Vidhan Sabha) in District Boundaries of Assembly Constituency under Parliamentary Constituency - (Lok Sabha) Village-wise Winner Parties- 2020, 2019, 2015, 2014, 2010 and 2009	3-11
	Administrative Setup (2011)	
3	District Sub-district Towns Villages Inhabited Villages Uninhabited Villages Village Panchayat Intermediate Panchayat	12-19
	Demographics (2011)	
4	Population Households Rural/Urban Population Villages by Population Size Sex Ratio (Total & 0-6 Years) Religious Population Social Population Literacy Rate	20-21
	Electoral Features	
5	Important Dates of Last Elections Held Electors by Gender Service Electors Voters Voters Turnout Polling Stations & Average Number of Electors per Polling Station Electors by Age Group Present Elected Representatives	22-27
	Historical Summary Election Results	
6	Vote Share of Major Parties Winning Margin (Number & Percentage) Polarity of Parties Summary Result of Assembly Segment of Parliamentary Elections 2019, 2014, 2009, 2004 and 1999 Summary Result of Assembly Elections 2020, 2015, 2010, 2005 (Oct), 2005 (Feb), 2000, 1995, 1990, 1985, 1980 and 1977	28-48
	Polling Station Level Election Results	
7	Name and Number of Polling Station 2020, 2019, 2015, 2014, 2010 and 2009 Polling Station-wise Electors, Voters & Voters Turnout 2020, 2019, 2015, 2014, 2010 and 2009 Polling Station wise Elections Results 2020, 2019, 2015, 2014, 2010 and 2009	49-225
	Share of Assembly Constituency	
8	Share of Assembly Constituency - (Vidhan Sabha) in State, District and Parliamentary Constituency - (Lok Sabha)	226
	Socio-Economic Amenities (2011)	
9	Access to Administrative Units Agricultural, Manufacturing and Industrial Commodities Demographic Indicators Education Health & Manpower Drinking Water Supply Sanitation Entertainment and Recreations Infrastructure Power Food Allocation Distribution and Marketing of Agriculture Commodities Infrastructure Transport and Road Infrastructure Communication Banking and Financial Services Land Use Irrigation Source	228-242
10	Abbreviation & Sources	243-245
11	Disclaimer	246

Location & Political Map



Administrative Setup

List of Village Panchayat & Intermediate Panchayat (Block) Name - 2011

Village Name	Village Panchayat Name	Intermediate Panchayat Name
Andama	Nonaura	Keotiranway
Arai	Arai	Singhwara
Asrafpur	Shekhpurdani	Keotiranway
Asraha	Asraha	Keotiranway
Bahuara Buzurg	Haripur Pachimi	Singhwara
Balaha	Harpur	Singhwara
Banauli	Banauli	Singhwara
Bansara	Bansara	Keotiranway
Banwari Patti	Keouti	Keotiranway
Barahi	Barahi	Keotiranway
Barahi Abuara	Koilathan	Keotiranway
Barhaulia	Sadhwara	Singhwara
Bariaul	Bariaul	Keotiranway
Basauli	Arai Birdipur	Singhwara
Bastwara	Madhopur Bastwara	Singhwara
Bataul	Hariharpur Purbi	Singhwara
Bazidpur	Kothia	Keotiranway
Bazidpur	Kothia	Keotiranway
Behta	Keouti	Keotiranway
Bhagwatpur	Bansara	Keotiranway
Bharathi	Bharathi	Singhwara
Bharathpur	Bansara	Keotiranway
Bharauli	Bharauli	Singhwara
Bheriahi	Koilathan	Keotiranway
Bhojpatti	Pindarooch	Keotiranway
Bhojpatti	Majhigama	Keotiranway
Bihatwara	Koilathan	Keotiranway
Binwara	Khirma	Keotiranway
Birdipur	Arai Birdipur	Singhwara

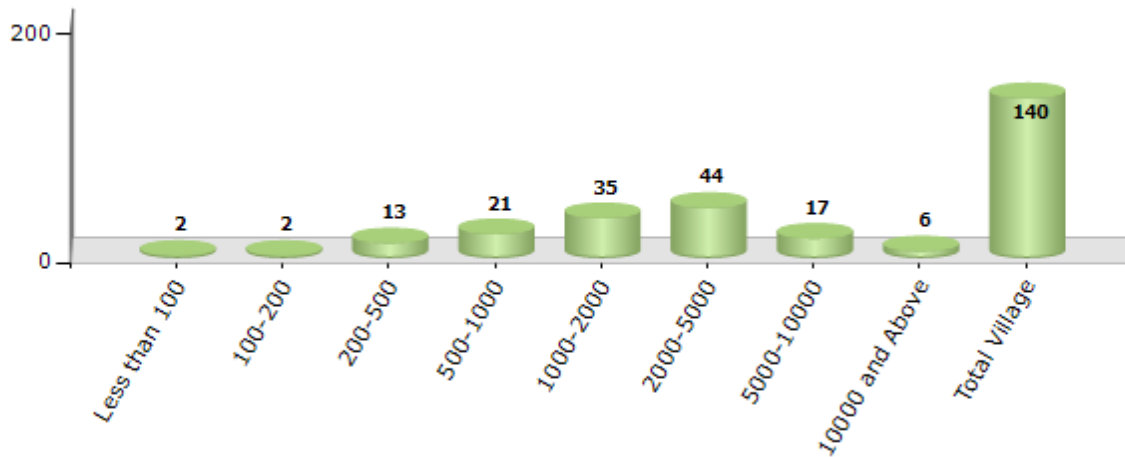
Contd....

Demographics

Number of Villages by Population Size - 2011

Less than 100	100-200	200-500	500-1000	1000-2000	2000-5000	5000-10000	10000 and Above	Total Village
2	2	13	21	35	44	17	6	140

Number of Villages by Population Size - 2011

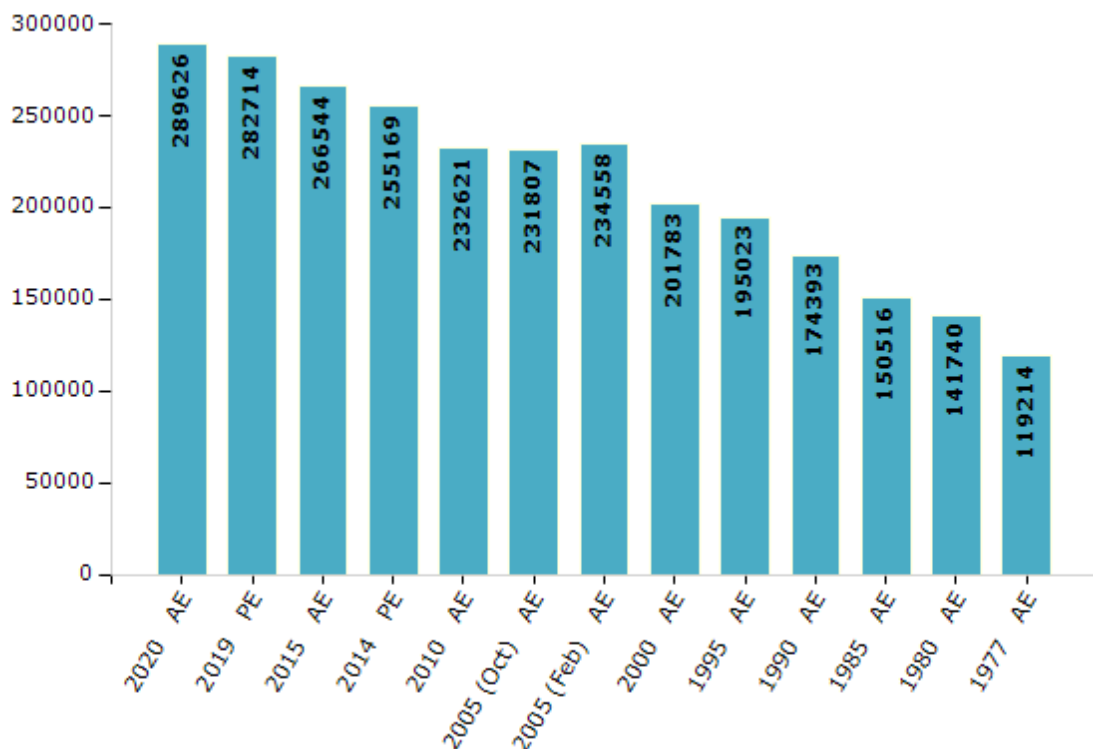


Electoral Features

Electors by Male & Female

Year	Male	Female	Others	Total	Year	Male	Female	Others	Total
2020 AE	154494	135123	9	289626	1995 AE	101847	93176	-	195023
2019 PE	151436	131270	8	282714	1990 AE	90301	84092	-	174393
2015 AE	144029	122503	12	266544	1985 AE	77139	73377	-	150516
2014 PE	138194	116970	5	255169	1980 AE	72003	69737	-	141740
2010 AE	126389	106232	0	232621	1977 AE	59659	59555	-	119214
2009 PE	-	-	-	-	1972 AE	-	-	-	-
2005 (Oct) AE	124899	106908	-	231807	1969 AE	-	-	-	-
2005 (Feb) AE	126679	107879	-	234558	1967 AE	-	-	-	-
2004 PE	-	-	-	-	1962 AE	-	-	-	-
2000 AE	108872	92911	-	201783	1957 AE	-	-	-	-
1999 PE	-	-	-	-	1952 AE	-	-	-	-

Number of Electors



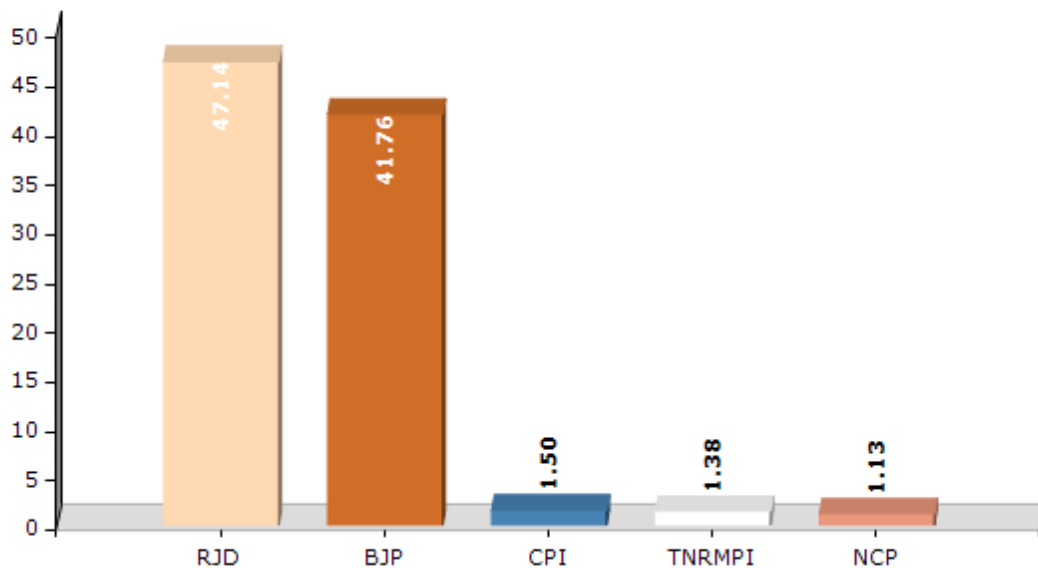
Note : AE : Assembly Election, PE : Assembly Segment of Parliamentary Election

Historical Summary Election Results

Summary Result of Assembly Election - 2015

Candidate Name	Party	Votes	Votes %
Faraz Fatmi	RJD	68601	47.14
Ashok Kumar Yadav	BJP	60771	41.76
Ram Chandra Sah	CPI	2176	1.5
Md. Faiyaz Khan	TNRMPI	2001	1.38
Chand Babu Rehman	NCP	1649	1.13
Vijay Kumar	IND	1587	1.09
Prasoon Pankaj	BSP	1281	0.88
Ram Vriksh Paswan	IND	1028	0.71
Meera Kumari Jha	RaJPa	890	0.61
Abdesh Kamti	AKBMP	602	0.41
Dinesh Kumar Das	NJPI	529	0.36
Ashok Kumar Jha	SKLP	463	0.32
Kusheshwar Mahto	SP	436	0.3
	NOTA	3513	2.41

Votes Percentage of Top Parties - 2015



Polling Station Level Election Results

Number and Name of Polling Stations (PS) (2020)

Number of Polling Stations	Name of Polling Stations	Number of Polling Stations	Name of Polling Stations
1	Madhya Vidhyalaya, Kora, Purvi Bhag	12	Madhya Vidhyalaya Simri Purvi Bhag
1A	Madhya Vidhyalaya, Kora, Purvi Bhag	12A	Madhya Vidhyalaya Simri Purvi Bhag
2	Madhya Vidhyalaya, Kora, Pashchimi Bhag	13	Uchch Vidhyalaya Simri Dakshin Bhag
2A	Madhya Vidhyalaya, Kora, Pashchimi Bhag	13A	Uchch Vidhyalaya Simri Dakshin Bhag
3	Prathmik Vidhyalaya, Kalwara Purvi Bhag	14	Uchch Vidhyalaya Simri Uttari Bhag
3A	Prathmik Vidhyalaya, Kalwara Purvi Bhag	14A	Uchch Vidhyalaya Simri Uttari Bhag
4	Prathmik Vidhyalaya, Kalavara Pashchim Bhag	15	Madhya Vidhyalaya, Kaligaon Purvi Bhag
4A	Prathmik Vidhyalaya, Kalavara Pashchim Bhag	15A	Madhya Vidhyalaya, Kaligaon Purvi Bhag
5	Utkramit Madhya Vidhyalaya Bharhulli Uttari Bhag	16	Utkramit Madhya Vidhyalaya Kaligaon Purvi Bhag
5A	Utkramit Madhya Vidhyalaya Bharhulli Uttari Bhag	17	Utkramit Madhya Vidhyalaya Kaligaon Paschimi Bhag
6	Utkramit Madhya Vidhyalaya Bharhulli Dakshini Bhag	18	Samudayik Bhawan Kaligaon Purvi Bhag
6A	Utkramit Madhya Vidhyalaya Bharhulli Dakshini Bhag	18A	Samudayik Bhawan Kaligaon Purvi Bhag
7	Prathmik Vidhyalaya Lorika	19	Panchayat Bhawan, Kaligaon
8	Anusuchit Jati Prathmik Vidhyalaya Simri Purvi Bhag	20	Urdu Prathmik Vidhyalaya, Kalyanapur Purvi Bhag
8A	Anusuchit Jati Prathmik Vidhyalaya Simri Purvi Bhag	20A	Urdu Prathmik Vidhyalaya, Kalyanapur Purvi Bhag
9	Anusuchit Jati Prathmik Vidhyalaya, Simri, Pashchimi Bhag	21	Prathmik Vidhyalaya Biraul
9A	Anusuchit Jati Prathmik Vidhyalaya, Simri, Pashchimi Bhag	22	Prathmik Vidhyalaya Gogaul
10	Madhya Vidhyalaya Simri Uttari Bhag	23	Utkramit Madhya Vidhyalaya Manihas Uttari Bhag
10A	Madhya Vidhyalaya Simri Uttari Bhag	24	Utkramit Madhya Vidhyalaya Manihas Dakshini Bhag
11	Madhya Vidhyalaya Simri Paschimi Bhag	24A	Utkramit Madhya Vidhyalaya Manihas Dakshini Bhag
11A	Madhya Vidhyalaya Simri Paschimi Bhag	25	Utkramit Madhya Vidhyalaya Bharathi Purvi Bhag

Contd....

Polling Station Level Election Results

Polling Station-wise Votes Secured by Overall Top Five Parties in Keoti Assembly in Assembly Election (AE) under Madhubani Parliamentary Constituency in Bihar (2020)

Number of Polling Station	Winner - Murari Mohan Jha (BJP)	Runner-up - Abdul Bari Siddiqui (RJD)	3rd - Yogesh Ranjan (IND)	4th - Faiyazur Rahman (SJDD)	5th - Sanjeev Kumar Himanshu (IND)	NOTA	Other	Total Votes Secured
20A	8	304	0	0	0	3	7	322
21	468	54	24	9	1	6	17	579
22	175	190	7	5	1	2	2	382
23	155	303	0	5	2	3	27	495
24	223	53	4	2	1	6	8	297
24A	74	239	2	2	1	11	6	335
25	389	142	18	4	4	11	19	587
26	333	125	4	8	3	9	13	495
27	160	91	6	5	0	3	8	273
27A	36	230	0	1	1	5	14	287
28	223	187	8	8	0	10	13	449
29	294	91	19	4	4	19	11	442
30	336	95	17	9	4	6	13	480
31	184	60	4	3	0	1	6	258
31A	67	166	4	1	4	6	8	256
32	154	144	8	5	0	4	8	323
32A	106	195	0	5	0	2	11	319
33	74	175	2	1	2	5	16	275
33A	52	217	1	3	0	5	19	297
34	259	69	12	5	3	1	4	353
34A	83	227	7	0	1	11	5	334
35	95	258	9	0	5	6	8	381
36	212	200	5	8	0	4	16	445
37	162	144	9	3	2	5	10	335
37A	10	261	0	0	0	0	0	271
38	12	195	0	0	0	0	5	212
38A	90	123	2	1	0	1	5	222
39	279	23	10	3	2	5	10	332
39A	137	101	9	4	2	1	5	259
40	222	52	10	1	3	8	5	301
40A	242	36	2	0	2	3	7	292
41	402	24	9	6	2	5	9	457
42	213	132	11	7	2	8	29	402
43	84	193	4	1	1	4	1	288
43A	117	206	4	1	9	1	4	342

Contd....

Polling Station Level Election Results

Winner, Runner-up and 3rd Party Position & Winning Margin According to Polling Stations in Keoti Assembly in Assembly Election (AE) under Madhubani Parliamentary Constituency in Bihar (2020)

Polling Station Number	Winner Party	Winner Votes (%)	Runner-up Party	Runner-up Votes (%)	Winning Margin Votes (%)	Third Party	Third Party Votes (%)	Other Votes (%)
44	RJD	263 (65.1)	BJP	109 (26.98)	154 (38.12)	IND (YR)	8 (1.98)	24 (5.94)
45	RJD	277 (80.52)	BJP	44 (12.79)	233 (67.73)	JAPL	4 (1.16)	19 (5.52)
46	RJD	218 (68.55)	BJP	69 (21.7)	149 (46.85)	IND (YR)	4 (1.26)	27 (8.49)
47	BJP	402 (84.28)	RJD	34 (7.13)	368 (77.15)	IND (YR)	12 (2.52)	29 (6.08)
48	RJD	275 (62.36)	BJP	134 (30.39)	141 (31.97)	IND (YR)	5 (1.13)	27 (6.12)
49	RJD	238 (50.75)	BJP	184 (39.23)	54 (11.52)	IND (YR)	13 (2.77)	34 (7.25)
50	BJP	331 (61.07)	RJD	183 (33.76)	148 (27.31)	IND (YR)	7 (1.29)	21 (3.87)
51	BJP	343 (71.16)	RJD	86 (17.84)	257 (53.32)	IND (YR)	17 (3.53)	36 (7.47)
52	BJP	479 (79.44)	RJD	65 (10.78)	414 (68.66)	IND (YR)	18 (2.99)	41 (6.8)
53	BJP	403 (81.91)	RJD	50 (10.16)	353 (71.75)	IND (YR)	15 (3.05)	24 (4.88)
54	RJD	428 (81.84)	BJP	51 (9.75)	377 (72.09)	SJDD	15 (2.87)	29 (5.54)
55	RJD	367 (82.84)	BJP	41 (9.26)	326 (73.58)	IND (MM)	5 (1.13)	30 (6.77)
55A	RJD	168 (44.33)	BJP	166 (43.8)	2 (0.53)	IND (YR)	14 (3.69)	31 (8.18)
56	BJP	430 (83.33)	RJD	51 (9.88)	379 (73.45)	IND (YR)	11 (2.13)	24 (4.65)
56A	BJP	274 (58.17)	RJD	140 (29.72)	134 (28.45)	IND (YR)	24 (5.1)	33 (7.01)
57	BJP	337 (82.6)	RJD	45 (11.03)	292 (71.57)	SJDD	5 (1.23)	21 (5.15)
57A	BJP	217 (53.85)	RJD	159 (39.45)	58 (14.4)	IND (YR)	9 (2.23)	18 (4.47)
58	RJD	311 (51.07)	BJP	247 (40.56)	64 (10.51)	IND (YR)	10 (1.64)	41 (6.73)
59	BJP	313 (56.81)	RJD	193 (35.03)	120 (21.78)	IND (YR)	10 (1.81)	35 (6.35)
60	RJD	213 (55.04)	BJP	164 (42.38)	49 (12.66)	SJDD	2 (0.52)	8 (2.07)
60A	RJD	232 (66.48)	BJP	94 (26.93)	138 (39.55)	SJDD	3 (0.86)	20 (5.73)
61	BJP	275 (72.94)	RJD	64 (16.98)	211 (55.96)	IND (YR)	12 (3.18)	26 (6.9)
61A	BJP	229 (67.55)	RJD	75 (22.12)	154 (45.43)	IND (YR)	14 (4.13)	21 (6.19)
62	BJP	258 (65.82)	RJD	108 (27.55)	150 (38.27)	IND (YR)	10 (2.55)	16 (4.08)
62A	BJP	324 (74.14)	RJD	53 (12.13)	271 (62.01)	IND (YR)	22 (5.03)	38 (8.7)
63	RJD	243 (66.39)	BJP	87 (23.77)	156 (42.62)	IND (SKH)	5 (1.37)	31 (8.47)
63A	BJP	185 (69.03)	RJD	53 (19.78)	132 (49.25)	IND (YR)	15 (5.6)	15 (5.6)
64	RJD	242 (82.88)	BJP	36 (12.33)	206 (70.55)	NCP	4 (1.37)	10 (3.42)
64A	RJD	242 (86.12)	BJP	27 (9.61)	215 (76.51)	JAPL	7 (2.49)	5 (1.78)
65	RJD	212 (95.93)	BJP	6 (2.71)	206 (93.22)	SJDD	1 (0.45)	2 (0.9)
65A	RJD	245 (97.61)	BJP	6 (2.39)	239 (95.22)	IND (YR)	0 (0)	0 (0)
66	RJD	379 (91.77)	JAPL	7 (1.69)	372 (90.08)	BJP	4 (0.97)	23 (5.57)
67	RJD	402 (95.26)	BJP	1 (0.24)	401 (95.02)	IND (SKH)	1 (0.24)	18 (4.27)
68	BJP	473 (77.04)	RJD	100 (16.29)	373 (60.75)	IND (YR)	11 (1.79)	30 (4.89)
69	BJP	499 (82.48)	RJD	54 (8.93)	445 (73.55)	IND (YR)	16 (2.64)	36 (5.95)

Contd....

Socio-Economic Amenities - Rural

Access to Education Facilities

Particulars	Number of Villages (% of Population)				
	Available	Not Available	If Not Available (Distance of Nearest Facility)		
			A	B	C
Govt. Primary School	128 (97)	12 (3)	3 (1)	0 (0)	0 (0)
Private Primary School	25 (31)	115 (69)	6 (1)	1 (0)	0 (0)
Govt. Middle School	87 (83)	53 (17)	30 (9)	9 (3)	0 (0)
Private Middle School	7 (5)	133 (95)	12 (4)	1 (0)	0 (0)
Govt. Secondary School	15 (12)	125 (88)	0 (0)	5 (4)	86 (56)
Private Secondary School	1 (1)	139 (99)	0 (0)	0 (0)	33 (27)
Govt. Senior Secondary School	5 (6)	135 (94)	7 (2)	30 (19)	88 (62)
Private Senior Secondary School	1 (0)	139 (100)	1 (2)	5 (3)	3 (7)
Govt. Arts and Science Degree College	2 (1)	138 (99)	0 (0)	7 (3)	128 (91)
Private Arts and Science Degree College	1 (1)	139 (99)	0 (0)	0 (0)	2 (4)
Govt. Engineering College	0 (0)	140 (100)	0 (0)	0 (0)	0 (0)
Private Engineering College	0 (0)	140 (100)	0 (0)	0 (0)	140 (100)
Govt. Medicine College	0 (0)	140 (100)	0 (0)	0 (0)	140 (100)
Private Medicine College	0 (0)	140 (100)	0 (0)	0 (0)	0 (0)
Govt. Management Institute	0 (0)	140 (100)	0 (0)	0 (0)	139 (97)
Private Management Institute	0 (0)	140 (100)	0 (0)	0 (0)	1 (3)
Govt. Polytechnic	0 (0)	140 (100)	0 (0)	0 (0)	140 (100)
Private Polytechnic	0 (0)	140 (100)	0 (0)	0 (0)	0 (0)
Govt. Vocational Training School/ITI	2 (3)	138 (97)	0 (0)	0 (0)	133 (92)
Private Vocational Training School/ITI	0 (0)	140 (100)	0 (0)	0 (0)	5 (5)
Govt. Non Formal Training Centre	1 (2)	139 (98)	0 (0)	0 (0)	139 (98)
Private Non Formal Training Centre	0 (0)	140 (100)	0 (0)	0 (0)	0 (0)
Govt. School For Disabled	0 (0)	140 (100)	0 (0)	0 (0)	138 (96)
Private School For Disabled	0 (0)	140 (100)	0 (0)	0 (0)	2 (4)
Government Others	5 (7)	135 (93)	0 (0)	2 (1)	10 (9)
Private Others	0 (0)	140 (100)	0 (0)	0 (0)	0 (0)

Note : Distance A : Less than 5 km; B : Between 5-10 km; C : 10+ km.; Source : Data Analysis is based on 2011 Census.

DISCLAIMER

The Terms of Use and Disclaimer of Datanet India Private Limited (hereinafter referred to as "Datanet") for use of this analysis report of **Keoti Assembly Constituency (Keoti Vidhan Sabha)** :-

1. **Assembly Factbook™** is a Registered Trade Mark owned by Datanet.
2. All the maps are sketched and graphical representation only and have not been drawn to the scale and also not to represent the actual geographical area or boundary of the unit.
3. The data for the aforesaid analysis is based on authentic sources and has been culled from the various publications of Census, CSO and NSSO for district and block level data, various central and state government departments, Central & State Elections Commissions and the concerned Returning Officers' releases, Electoral Rolls, Election results and allied publications, internal assessment, surveys, estimates and analysis. Therefore, certain adjustment of data at micro level may have been done to arrive closer to the macro data.
4. Data have been provided on an "As Is" and "As AVAILABLE" basis
5. The colours shown in the maps or diagram and charts of a particular party, alliance or AC are indicative and do not represent them.
6. This publication which includes maps, sheets, graphs and data would be the property under copyright of Datanet only. The user may use these for its internal study, analysis and research purposes. It's public display, re-selling or any commercial uses by the user are not allowed.
7. Datanet has taken due care and caution in compilation and processing of data and allied information, but does not guarantee the accuracy, adequacy or completeness of any information/analysis and will be not responsible for any errors or omissions or for the results obtained from the use of such information/analysis.
8. All the contents for the publication have been culled from various authentic sources and Datanet reasonably believes such sources to be reliable, but does not make any representations, express or implied as to the accuracy or fitness of use of such information. The information or contents of the information/analysis do not constitute advice and should not be relied upon in making (or refraining from making) any decision. Any reliance placed upon the information provided by Datanet is the sole responsibility and strictly at the user's risk.
9. In no event will Datanet be liable for any damages (including, without limitation, damages for loss of business projects, or loss of profits) arising in contract, tort or otherwise from the use of or inability to use any of its contents, or from any action taken (or refrained from being taken) as a result of using the analysis or any of its contents. Datanet its directors, owners, editors, officials, employees, distributor and agents or any associate will not be liable for any errors in the information contained or any consequences arising from the use of the contents of the provided information/analysis.
10. If any provision of these terms and conditions is held invalid or illegal or unenforceable for any reason by any court of competent jurisdiction, such provision shall be severed and the remainder of provisions of the terms and conditions shall continue in full force and effect as if the Term of Use had been executed with the invalid, illegal or unenforceable provision eliminated.
11. If there are any discrepancies in the information provided, please bring it to attention of Datanet for suitable rectification measures.

Buy Online This Complete Book At
Datanet India eBooks Store

www.indiastatpublications.com

or go directly at

[http://www.indiastatpublications.com/
Assembly_factbook/Bihar/Madhubani/Keoti](http://www.indiastatpublications.com/Assembly_factbook/Bihar/Madhubani/Keoti)

 **india**stat**elections**

ISBN : 978-93-5313-108-1

