



Bihar

Assembly Factbook™

Taraiya Assembly Constituency



Key Electoral Data of Taraiya
Assembly Constituency (Vidhan Sabha)

Bihar

Assembly Factbook™

Taraiya Assembly Constituency



Taraiya Vidhan Sabha

Editor & Director

Dr. R.K. Thukral

Research Editor

Dr. Shafeeq Rahman

Compiled, Researched and Published by Datanet India Pvt. Ltd.

D-100, 1st Floor,

Okhla Industrial Area, Phase-I,
New Delhi- 110020.

Ph.: 91-11- 43580781-84

Email : support@indiastatpublications.com

Website : www.indiastatelections.com

Online Book Store :

www.indiastatpublications.com

Report No. : AFB/BR-116-0125

ISBN : 978-93-5313-196-8

First Edition : January, 2018

Eighth Updated Edition : January, 2025

Price : Rs. 11500/-

US\$ 310

© Datanet India Pvt. Ltd.

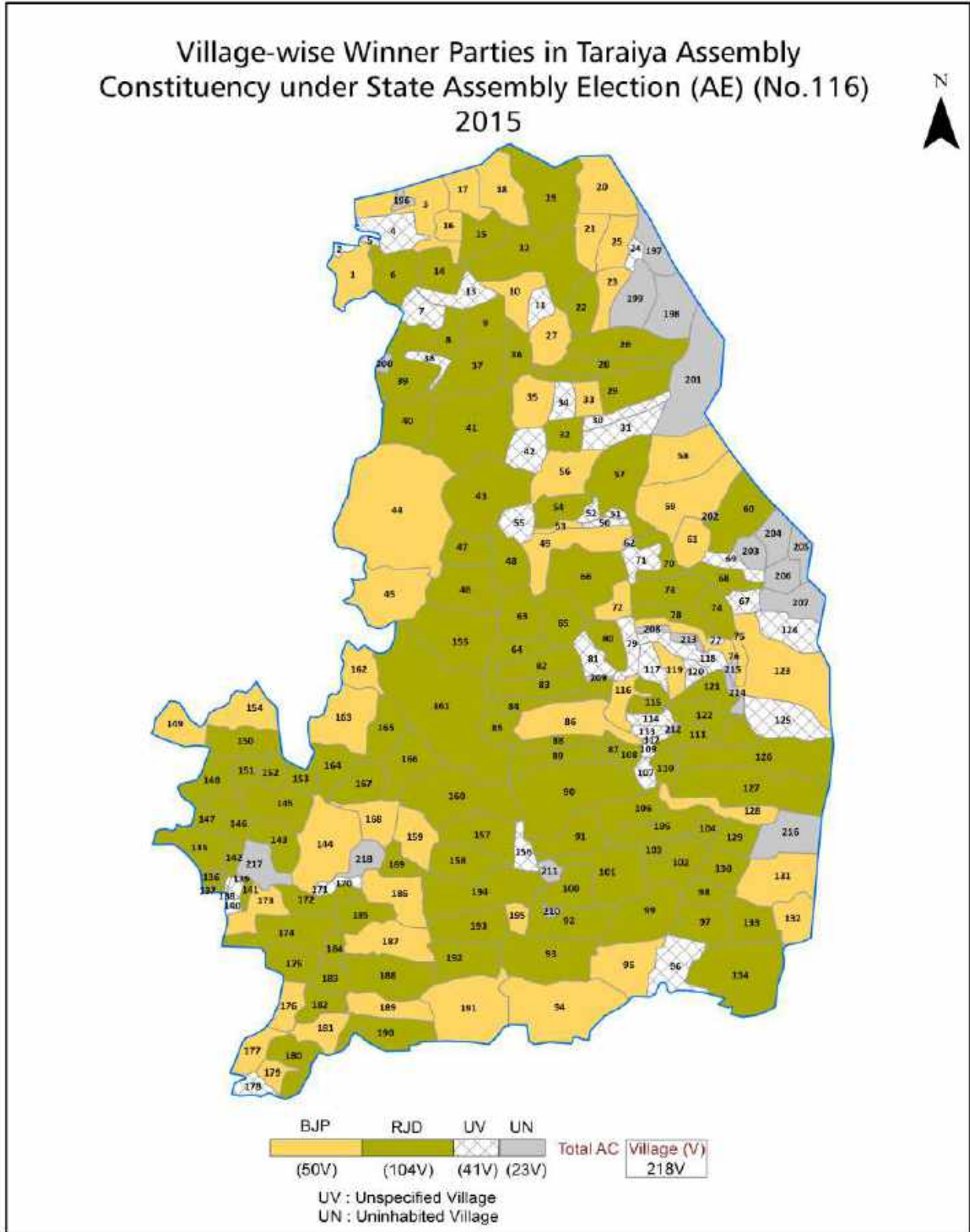
All rights reserved. No part of this book may be reproduced, stored in a retrieval system or transmitted in any form or by any means, mechanical photocopying, photographing, scanning, recording or otherwise without the prior written permission of the publisher. Please refer to Disclaimer at page no. 252 for the use of this publication.

Printed in India

Contents

No.	Particulars	Page No.
	Introduction	
1	Assembly Constituency - (Vidhan Sabha) at a Glance Features of Assembly as per Delimitation Commission of India (2008)	1-2
	Location and Political Maps	
2	Location Map Boundaries of Assembly Constituency - (Vidhan Sabha) in District Boundaries of Assembly Constituency under Parliamentary Constituency - (Lok Sabha) Village-wise Winner Parties- 2024, 2020, 2019, 2015, 2014, 2010 and 2009	3-11
	Administrative Setup (2011)	
3	District Sub-district Towns Villages Inhabited Villages Uninhabited Villages Village Panchayat Intermediate Panchayat	12-22
	Demographics (2011)	
4	Population Households Rural/Urban Population Villages by Population Size Sex Ratio (Total & 0-6 Years) Religious Population Social Population Literacy Rate	23-24
	Electoral Features	
5	Important Dates of Last Elections Held Electors by Gender Service Electors Voters Voters Turnout Polling Stations & Average Number of Electors per Polling Station Electors by Age Group Present Elected Representatives	25-30
	Historical Summary Election Results	
6	Vote Share of Major Parties Winning Margin (Number & Percentage) Polarity of Parties Summary Result of Assembly Segment of Parliamentary Elections 2024, 2019, 2014, 2009, 2004 and 1999 Summary Result of Assembly Elections 2020, 2015, 2010, 2005 (Oct), 2005 (Feb), 2000, 1995, 1990, 1985, 1980, 1977, 1972, 1969 and 1967	31-53
	Polling Station Level Election Results	
7	Name and Number of Polling Station 2024, 2020, 2019, 2015, 2014, 2010 and 2009 Polling Station-wise Electors, Voters & Voters Turnout 2024, 2020, 2019, 2015, 2014, 2010 and 2009 Polling Station wise Elections Results 2024, 2020, 2019, 2015, 2014, 2010 and 2009	54-231
	Share of Assembly Constituency	
8	Share of Assembly Constituency - (Vidhan Sabha) in State, District and Parliamentary Constituency - (Lok Sabha)	232
	Socio-Economic Amenities (2011)	
9	Access to Administrative Units Agricultural, Manufacturing and Industrial Commodities Demographic Indicators Education Health & Manpower Drinking Water Supply Sanitation Entertainment and Recreations Infrastructure Power Food Allocation Distribution and Marketing of Agriculture Commodities Infrastructure Transport and Road Infrastructure Communication Banking and Financial Services Land Use Irrigation Source	234-248
10	Abbreviation & Sources	249-251
11	Disclaimer	252

Location & Political Map



Administrative Setup

List of Village Panchayat & Intermediate Panchayat (Block) Name - 2011

Village Name	Village Panchayat Name	Intermediate Panchayat Name
Achitpur	Isuwapur	Ishupur
Afzalpur	Agauthar Sundar	Ishupur
Agauthar Nanda	Agauthar Sundar	Ishupur
Agauthar Sundar	Agauthar Sundar	Ishupur
Amardah	Chakahan	Ishupur
Andhar Bari	Chainpur	Taraiya
Arazi Murwa	Laua	Ishupur
Ardewa	Madhopur	Taraiya
Atanagar	Atanagar	Ishupur
Bagahi	Pokhrera	Taraiya
Bagahi Harakhpur	Pachbinda	Taraiya
Bagdiha	Satjora	Panapur
Bairagi Bhuin	Belaur	Panapur
Bajrahia	Jaithar	Ishupur
Bakwa	Bakwa	Panapur
Balua Mardan	Chanchalia	Taraiya
Baluabhikari	Chanchalia	Taraiya
Bangra	Ramchaura	Ishupur
Basahiya	Basahiya	Panapur
Basatpur	Basahiya	Panapur
Bawan	Pachbinda	Taraiya
Belahri	Bhagwatpur	Taraiya
Belaur	Belaur	Panapur
Betaura	Satjora	Panapur
Bhagwanpur	Chakiya	Panapur
Bhagwanpur	Kondh	Panapur
Bhagwanpur	Datra Pursauli	Ishupur
Bhagwanpur Birt	Chakiya	Panapur
Bhagwatpur	Bhagwatpur	Taraiya

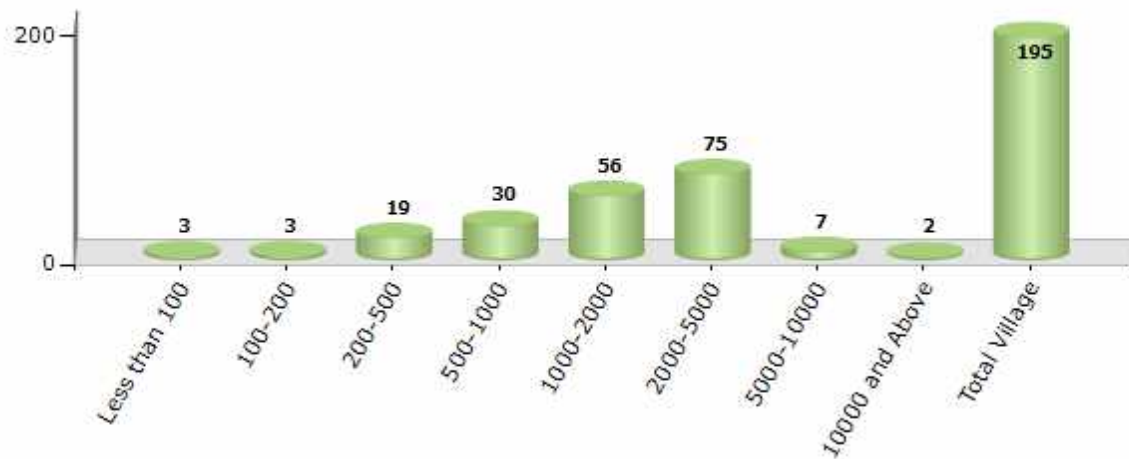
Contd....

Demographics

Number of Villages by Population Size - 2011

Less than 100	100-200	200-500	500-1000	1000-2000	2000-5000	5000-10000	10000 and Above	Total Village
3	3	19	30	56	75	7	2	195

Number of Villages by Population Size - 2011

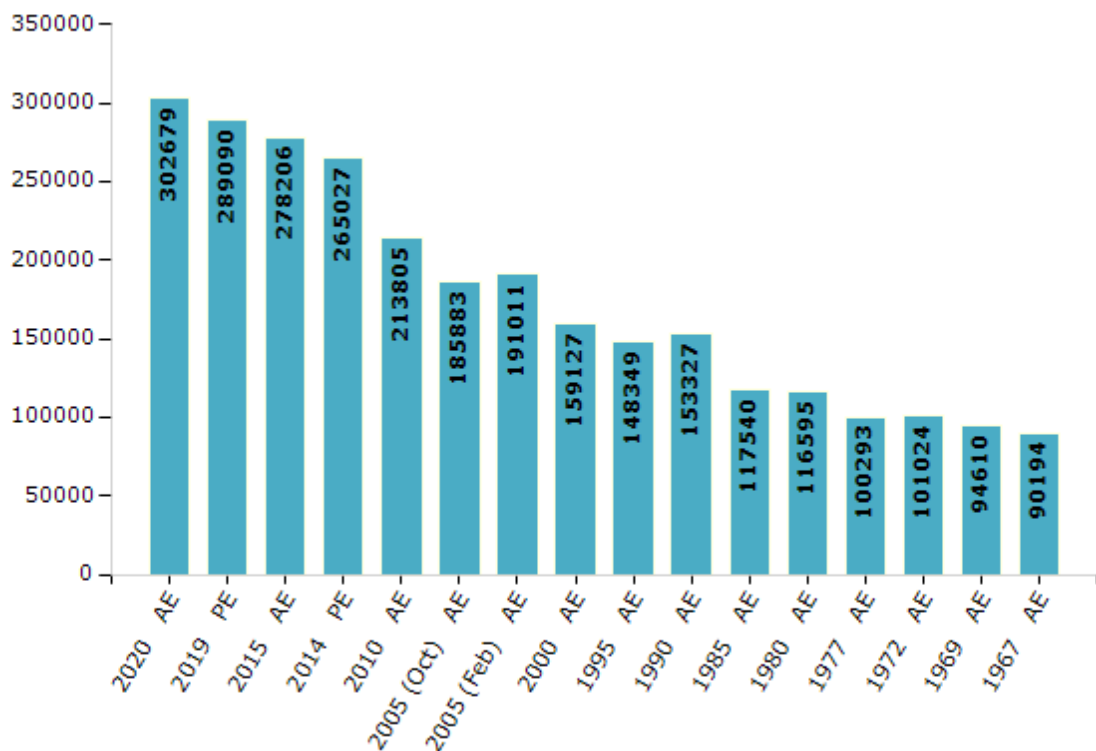


Electoral Features

Electors by Male & Female

Year	Male	Female	Others	Total	Year	Male	Female	Others	Total
2020 AE	160380	142292	7	302679	1995 AE	74671	73678	-	148349
2019 PE	155153	133931	6	289090	1990 AE	92129	61198	-	153327
2015 AE	149865	128335	6	278206	1985 AE	62322	55218	-	117540
2014 PE	141909	123115	3	265027	1980 AE	61804	54791	-	116595
2010 AE	113232	100573	0	213805	1977 AE	51019	49274	-	100293
2009 PE	-	-	-	-	1972 AE	50004	51020	-	101024
2005 (Oct) AE	93853	92030	-	185883	1969 AE	49777	44833	-	94610
2005 (Feb) AE	101291	89720	-	191011	1967 AE	-	-	-	90194
2004 PE	-	-	-	-	1962 AE	-	-	-	-
2000 AE	81444	77683	-	159127	1957 AE	-	-	-	-
1999 PE	-	-	-	-	1952 AE	-	-	-	-

Number of Electors



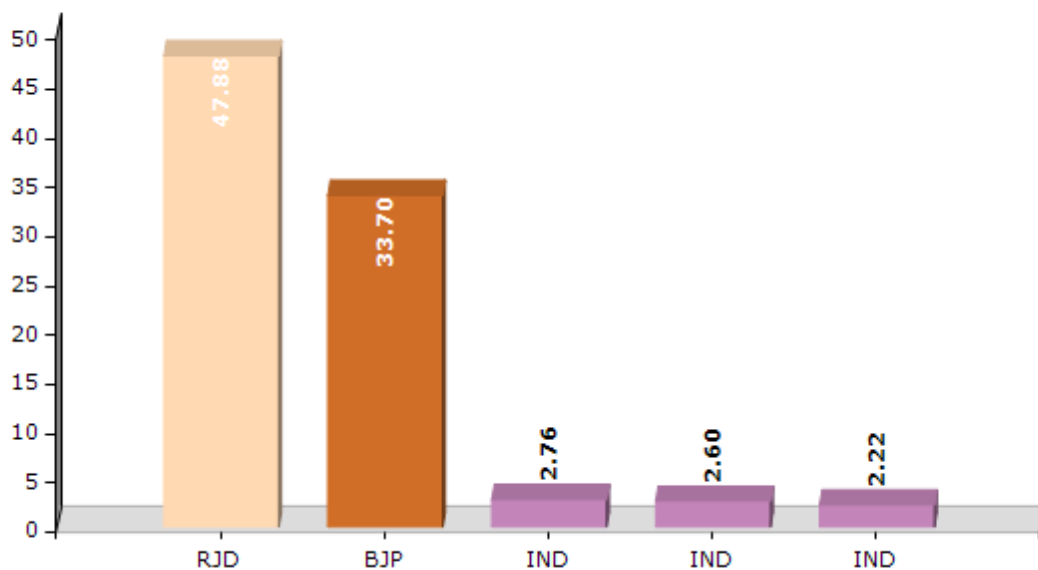
Note : AE : Assembly Election, PE : Assembly Segment of Parliamentary Election

Historical Summary Election Results

Summary Result of Assembly Election - 2015

Candidate Name	Party	Votes	Votes %
Mudrika Prasad Roy	RJD	69012	47.88
Janak Singh	BJP	48572	33.7
Braj Bihari Singh	IND	3980	2.76
Nazare Imam Khan	IND	3747	2.6
Hemant Kumar Singh	IND	3195	2.22
Geeta Sagar Ram	CPM	2840	1.97
Sabha Ray	CPI(ML)(L)	2069	1.44
Satyendra Kumar Singh	PMP	1929	1.34
Abhimanyu Kumar "Manish"	ABHM	1824	1.27
Ranvijay Kr. Singh	SP	1121	0.78
Radha Kant	ABRS	736	0.51
Lalan Sah	BNSKP	611	0.42
Nand Kishor Singh	SKLP	571	0.4
	NOTA	3921	2.72

Votes Percentage of Top Parties - 2015



Polling Station Level Election Results

Number and Name of Polling Stations (PS) (2020)

Number of Polling Stations	Name of Polling Stations	Number of Polling Stations	Name of Polling Stations
1	Prathamik Vidyalay Semaraha	16	Madhya Vidyalay Satjoda Madhya Bhag
1A	Prathamik Vidyalay Semaraha	16A	Madhya Vidyalay Satjoda Madhya Bhag
2	Prathamik Vidyalay Singahi	17	Utakramit Madhya Vidyalay Khajuri Dakshin tola Baya Bhag
2A	Prathamik Vidyalay Singahi	18	Utakramit Madhya Vidyalay Khajuri Dakshin tola Daya Bhag
3	Adarsh Madhya Sah Utkramit Uchch Vidyalay Belour Purvi Bhag	19	Utakramit Madhya Vidyalay Chakiya Uttar Bhag
4	Adarsh Madhya Sah Utkramit Uchch Vidyalay Belour Paschim Bhag	19A	Utakramit Madhya Vidyalay Chakiya Uttar Bhag
4A	Adarsh Madhya Sah Utkramit Uchch Vidyalay Belour Paschim Bhag	20	Utakramit Madhya Vidyalay Chakiya Dakshin Bhag
5	Utkramit Madhya Vidyalay Murali Math Dakshin Bhag	20A	Utkramit Madhya Vidyalay Chakiya Dakshin Bhag
6	Utkramit Madhya Vidyalay Murali Math Uttar Bhag	21	Utakramit Madhya Vidyalay Chintamanpur
7	Prathamik Vidyalay Bijauli	22	Rajkiya Buniyad Vidyalay Karacholiya
7A	Prathamik Vidyalay Bijauli	23	Prathamik Vidyalay Vrit Bhagwanapur
8	Prathamik Vidyalay Betaura	24	Navsrijt Prathamik Vidyalay Prithvipur
8A	Prathamik Vidyalay Betaura	25	Utakramit Madhya Vidyalay Basantpur
9	Utkramit Madhya Vidyalay Bagdiha	25A	Utakramit Madhya Vidyalay Basantpur
10	Navsrijit Parthamik Vidhyalay Shivmandir Pipra	26	Prathamik Vidyalay Fatehpur
11	Utkramit Madhya Vidyalay Satjoda,Urdu Dakshin Bhag	27	Kanya Prathamik Vidyalay Sonbarsa
12	Utkramit Madhya Vidyalay Satjoda,Urdu Uttar Bhag	27A	Kanya Prathamik Vidyalay Sonbarsa
13	Madhya Vidyalay Satjoda Uttar Bhag	28	Prathamik Vidyalay Salempur
14	Madhya Vidyalay Satjoda Uttar Bhag Purbi Bhag	29	Utakramit Madhya Vidyalay Madava Basahiya Uttar Bhag
14A	Madhya Vidyalay Satjoda Uttar Bhag Purbi Bhag	30	Utakramit Madhya Vidyalay Madava Basahiya Dakshin Bhag
15	Madhya Vidyalay Satjoda Dakshin Bhag	31	Prathamik Vidyalay Basahiya Baya Bhag

Contd....

Polling Station Level Election Results

Polling Station-wise Votes Secured by Overall Top Five Parties in Taraiya Assembly in Assembly Election (AE) under Maharajganj Parliamentary Constituency in Bihar (2020)

Number of Polling Station	Winner - Janak Singh (BJP)	Runner-up - Sipahi Lal Mahto (RJD)	3rd - Sudhir Kumar Singh (IND)	4th - Shailendra Pratap (IND)	5th - Saroj Kumar Giri (IND)	NOTA	Other	Total Votes Secured
26	183	196	36	21	16	4	54	510
27	66	97	145	8	3	9	73	401
27A	162	39	91	5	7	1	32	337
28	57	310	37	13	10	3	107	537
29	163	74	49	19	17	3	33	358
30	240	73	79	33	20	11	37	493
31	183	117	43	25	19	1	37	425
32	170	138	30	47	13	8	91	497
33	100	185	33	15	14	3	94	444
33A	89	93	34	45	14	3	131	409
34	57	132	82	9	11	9	127	427
34A	17	163	13	6	4	4	97	304
35	116	172	52	18	34	9	95	496
36	105	117	27	9	14	3	48	323
37	103	134	31	31	107	2	98	506
38	88	86	87	22	27	4	43	357
38A	106	98	29	24	48	3	46	354
39	287	51	83	14	19	3	27	484
40	297	32	69	17	25	4	19	463
41	172	95	5	33	7	1	15	328
42	308	119	63	15	20	3	44	572
43	167	63	18	7	8	1	14	278
43A	145	84	66	9	7	9	32	352
44	42	56	76	73	6	1	56	310
44A	30	81	50	41	5	1	46	254
45	50	150	12	27	48	2	62	351
45A	35	101	20	15	22	2	180	375
46	58	190	44	39	12	3	112	458
47	111	247	45	17	15	3	80	518
48	223	129	109	41	14	2	70	588
49	87	219	43	12	20	6	145	532
50	179	26	48	12	17	2	55	339
50A	230	11	64	8	24	3	40	380
51	124	26	100	11	6	4	21	292
51A	198	12	90	6	7	3	21	337

Contd....

Polling Station Level Election Results

Winner, Runner-up and 3rd Party Position & Winning Margin According to Polling Stations in Taraiya Assembly in Assembly Election (AE) under Maharajganj Parliamentary Constituency in Bihar (2020)

Polling Station Number	Winner Party	Winner Votes (%)	Runner-up Party	Runner-up Votes (%)	Winning Margin Votes (%)	Third Party	Third Party Votes (%)	Other Votes (%)
52	BJP	205 (52.7)	RJD	87 (22.37)	118 (30.33)	IND (SKS)	26 (6.68)	71 (18.25)
53	BJP	145 (50.52)	RJD	70 (24.39)	75 (26.13)	IND (SP)	23 (8.01)	49 (17.07)
53A	BJP	127 (37.69)	RJD	75 (22.26)	52 (15.43)	IND (SKS)	58 (17.21)	77 (22.85)
54	BJP	129 (48.68)	IND (SKS)	81 (30.57)	48 (18.11)	RJD	25 (9.43)	30 (11.32)
54A	BJP	115 (45.45)	IND (SKS)	74 (29.25)	41 (16.2)	RJD	38 (15.02)	26 (10.28)
55	BJP	177 (51.91)	RJD	84 (24.63)	93 (27.28)	IND (SKS)	38 (11.14)	42 (12.32)
55A	IND (SKS)	86 (38.05)	RJD	72 (31.86)	14 (6.19)	BJP	42 (18.58)	26 (11.5)
56	BJP	143 (58.85)	IND (SKS)	27 (11.11)	116 (47.74)	RJD	22 (9.05)	51 (20.99)
56A	BJP	79 (30.38)	IND (SKS)	55 (21.15)	24 (9.23)	RJD	34 (13.08)	92 (35.38)
57	BJP	178 (60.54)	IND (SKS)	69 (23.47)	109 (37.07)	IND (SP)	19 (6.46)	28 (9.52)
57A	BJP	88 (27.67)	RJD	60 (18.87)	28 (8.8)	IND (SKS)	49 (15.41)	121 (38.05)
58	IND (SKS)	265 (52.68)	BJP	105 (20.87)	160 (31.81)	IND (SP)	87 (17.3)	46 (9.15)
59	IND (MK)	101 (21.58)	IND (SKS)	100 (21.37)	1 (0.21)	BJP	78 (16.67)	189 (40.38)
60	BJP	236 (41.4)	RJD	120 (21.05)	116 (20.35)	IND (SKS)	55 (9.65)	159 (27.89)
61	BJP	275 (52.88)	RJD	115 (22.12)	160 (30.76)	IND (SP)	32 (6.15)	98 (18.85)
62	BJP	210 (36.46)	IND (SKS)	131 (22.74)	79 (13.72)	RJD	54 (9.38)	181 (31.42)
63	IND (SKS)	191 (37.16)	BJP	177 (34.44)	14 (2.72)	IND (SP)	45 (8.75)	101 (19.65)
64	RJD	174 (42.96)	IND (MPR)	76 (18.77)	98 (24.19)	IND (MK)	59 (14.57)	96 (23.7)
64A	RJD	140 (32.18)	IND (SP)	90 (20.69)	50 (11.49)	IND (SKS)	81 (18.62)	124 (28.51)
65	BJP	213 (64.74)	IND (SKS)	43 (13.07)	170 (51.67)	RJD	21 (6.38)	52 (15.81)
65A	BJP	127 (37.03)	RJD	102 (29.74)	25 (7.29)	IND (MK)	29 (8.45)	85 (24.78)
66	BJP	121 (40.33)	RJD	91 (30.33)	30 (10)	IND (SKS)	23 (7.67)	65 (21.67)
67	BJP	237 (53.14)	RJD	93 (20.85)	144 (32.29)	IND (SKS)	34 (7.62)	82 (18.39)
68	BJP	164 (48.09)	RJD	71 (20.82)	93 (27.27)	IND (SKS)	18 (5.28)	88 (25.81)
68A	BJP	109 (36.95)	RJD	78 (26.44)	31 (10.51)	IND (MK)	33 (11.19)	75 (25.42)
69	BJP	209 (55)	RJD	64 (16.84)	145 (38.16)	IND (SKS)	45 (11.84)	62 (16.32)
69A	BJP	139 (36.87)	RJD	121 (32.1)	18 (4.77)	IND (SKS)	42 (11.14)	75 (19.89)
70	RJD	181 (36.64)	BJP	160 (32.39)	21 (4.25)	IND (SKS)	53 (10.73)	100 (20.24)
71	BJP	282 (58.51)	RJD	78 (16.18)	204 (42.33)	IND (SKS)	61 (12.66)	61 (12.66)
72	BJP	298 (57.09)	RJD	117 (22.41)	181 (34.68)	IND (SKS)	47 (9)	60 (11.49)
73	BJP	235 (71)	RJD	30 (9.06)	205 (61.94)	IND (SKS)	21 (6.34)	45 (13.6)
73A	RJD	137 (35.4)	BJP	121 (31.27)	16 (4.13)	IND (MPR)	37 (9.56)	92 (23.77)
74	RJD	202 (35.25)	BJP	165 (28.8)	37 (6.45)	IND (MK)	72 (12.57)	134 (23.39)
75	BJP	256 (48.67)	RJD	103 (19.58)	153 (29.09)	IND (SP)	52 (9.89)	115 (21.86)
76	BJP	100 (27.62)	RJD	96 (26.52)	4 (1.1)	IND (SP)	38 (10.5)	128 (35.36)

Contd....

Socio-Economic Amenities - Rural

Access to Education Facilities

Particulars	Number of Villages (% of Population)				
	Available	Not Available	If Not Available (Distance of Nearest Facility)		
			A	B	C
Govt. Primary School	178 (96)	17 (4)	7 (1)	0 (0)	0 (0)
Private Primary School	66 (38)	129 (62)	2 (0)	0 (0)	0 (0)
Govt. Middle School	115 (73)	80 (27)	67 (18)	1 (0)	0 (0)
Private Middle School	30 (18)	165 (82)	2 (1)	0 (0)	0 (0)
Govt. Secondary School	16 (13)	179 (87)	67 (29)	83 (41)	24 (15)
Private Secondary School	6 (3)	189 (97)	2 (1)	1 (0)	0 (0)
Govt. Senior Secondary School	6 (3)	189 (97)	43 (19)	58 (29)	74 (43)
Private Senior Secondary School	5 (3)	190 (97)	5 (2)	4 (1)	3 (1)
Govt. Arts and Science Degree College	1 (0)	194 (100)	9 (4)	63 (28)	113 (63)
Private Arts and Science Degree College	3 (2)	192 (98)	3 (1)	2 (0)	2 (1)
Govt. Engineering College	0 (0)	195 (100)	0 (0)	0 (0)	0 (0)
Private Engineering College	0 (0)	195 (100)	0 (0)	0 (0)	195 (100)
Govt. Medicine College	0 (0)	195 (100)	0 (0)	0 (0)	195 (100)
Private Medicine College	0 (0)	195 (100)	0 (0)	0 (0)	0 (0)
Govt. Management Institute	0 (0)	195 (100)	0 (0)	0 (0)	195 (100)
Private Management Institute	0 (0)	195 (100)	0 (0)	0 (0)	0 (0)
Govt. Polytechnic	0 (0)	195 (100)	0 (0)	72 (43)	123 (57)
Private Polytechnic	0 (0)	195 (100)	0 (0)	0 (0)	0 (0)
Govt. Vocational Training School/ITI	0 (0)	195 (100)	0 (0)	14 (10)	92 (43)
Private Vocational Training School/ITI	0 (0)	195 (100)	0 (0)	58 (34)	31 (13)
Govt. Non Formal Training Centre	1 (0)	194 (100)	3 (1)	8 (4)	180 (93)
Private Non Formal Training Centre	1 (0)	194 (100)	0 (0)	1 (1)	2 (2)
Govt. School For Disabled	0 (0)	195 (100)	0 (0)	0 (0)	195 (100)
Private School For Disabled	0 (0)	195 (100)	0 (0)	0 (0)	0 (0)
Government Others	0 (0)	195 (100)	2 (3)	0 (0)	22 (10)
Private Others	5 (4)	190 (96)	0 (0)	1 (1)	0 (0)

Note : Distance A : Less than 5 km; B : Between 5-10 km; C : 10+ km.; Source : Data Analysis is based on 2011 Census.

DISCLAIMER

The Terms of Use and Disclaimer of Datanet India Private Limited (hereinafter referred to as "Datanet") for use of this analysis report of **Taraiya Assembly Constituency (Taraiya Vidhan Sabha) :-**

1. **Assembly Factbook™** is a Registered Trade Mark owned by Datanet.
2. All the maps are sketched and graphical representation only and have not been drawn to the scale and also not to represent the actual geographical area or boundary of the unit.
3. The data for the aforesaid analysis is based on authentic sources and has been culled from the various publications of Census, CSO and NSSO for district and block level data, various central and state government departments, Central & State Elections Commissions and the concerned Returning Officers' releases, Electoral Rolls, Election results and allied publications, internal assessment, surveys, estimates and analysis. Therefore, certain adjustment of data at micro level may have been done to arrive closer to the macro data.
4. Data have been provided on an "As Is" and "As AVAILABLE" basis
5. The colours shown in the maps or diagram and charts of a particular party, alliance or AC are indicative and do not represent them.
6. This publication which includes maps, sheets, graphs and data would be the property under copyright of Datanet only. The user may use these for its internal study, analysis and research purposes. It's public display, re-selling or any commercial uses by the user are not allowed.
7. Datanet has taken due care and caution in compilation and processing of data and allied information, but does not guarantee the accuracy, adequacy or completeness of any information/analysis and will be not responsible for any errors or omissions or for the results obtained from the use of such information/analysis.
8. All the contents for the publication have been culled from various authentic sources and Datanet reasonably believes such sources to be reliable, but does not make any representations, express or implied as to the accuracy or fitness of use of such information. The information or contents of the information/analysis do not constitute advice and should not be relied upon in making (or refraining from making) any decision. Any reliance placed upon the information provided by Datanet is the sole responsibility and strictly at the user's risk.
9. In no event will Datanet be liable for any damages (including, without limitation, damages for loss of business projects, or loss of profits) arising in contract, tort or otherwise from the use of or inability to use any of its contents, or from any action taken (or refrained from being taken) as a result of using the analysis or any of its contents. Datanet its directors, owners, editors, officials, employees, distributor and agents or any associate will not be liable for any errors in the information contained or any consequences arising from the use of the contents of the provided information/analysis.
10. If any provision of these terms and conditions is held invalid or illegal or unenforceable for any reason by any court of competent jurisdiction, such provision shall be severed and the remainder of provisions of the terms and conditions shall continue in full force and effect as if the Term of Use had been executed with the invalid, illegal or unenforceable provision eliminated.
11. If there are any discrepancies in the information provided, please bring it to attention of Datanet for suitable rectification measures.

Buy Online This Complete Book At
Datanet India eBooks Store

www.indiastatpublications.com

or go directly at

[http://www.indiastatpublications.com/
Assembly_factbook/Bihar/Maharajganj/Taraiya](http://www.indiastatpublications.com/Assembly_factbook/Bihar/Maharajganj/Taraiya)

 **india**stat**elections**

ISBN : 978-93-5313-196-8

