



Bihar

# Assembly Factbook™

Suryagarha Assembly Constituency

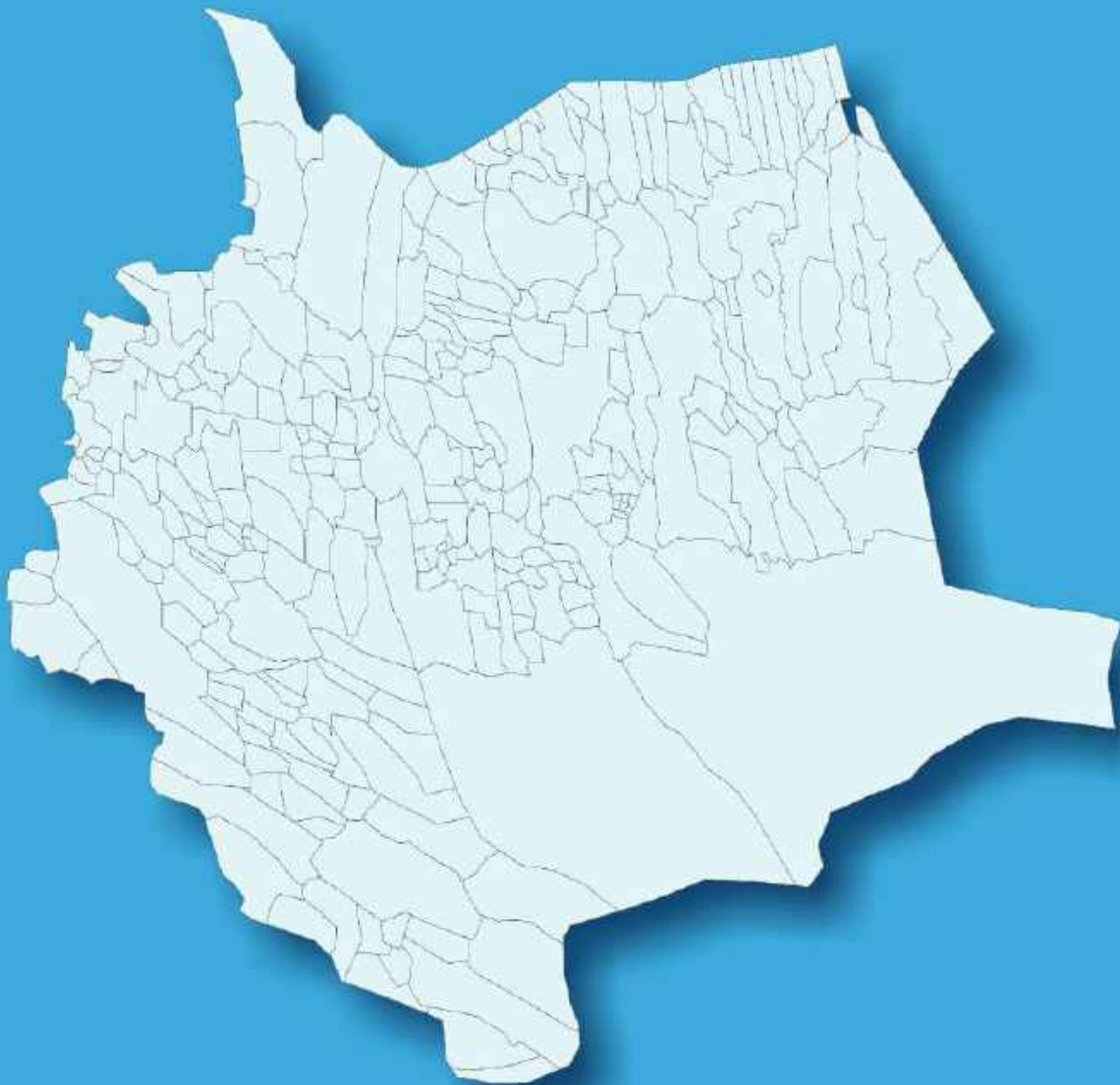


Key Electoral Data of Suryagarha  
Assembly Constituency (Vidhan Sabha)

Bihar

# Assembly Factbook™

Suryagarha Assembly Constituency



Suryagarha Vidhan Sabha

## **Editor & Director**

Dr. R.K. Thukral

## **Research Editor**

Dr. Shafeeq Rahman

## **Compiled, Researched and Published by Datanet India Pvt. Ltd.**

D-100, 1st Floor,

Okhla Industrial Area, Phase-I,  
New Delhi- 110020.

Ph.: 91-11- 43580781-84

Email : support@indiastatpublications.com

Website : www.indiastatelections.com

## **Online Book Store :**

www.indiastatpublications.com

**Report No. :** AFB/BR-167-0125

**ISBN :** 978-93-5313-195-1

**First Edition :** January, 2018

**Eighth Updated Edition :** January, 2025

**Price :** Rs. 11500/-

US\$ 310

**© Datanet India Pvt. Ltd.**

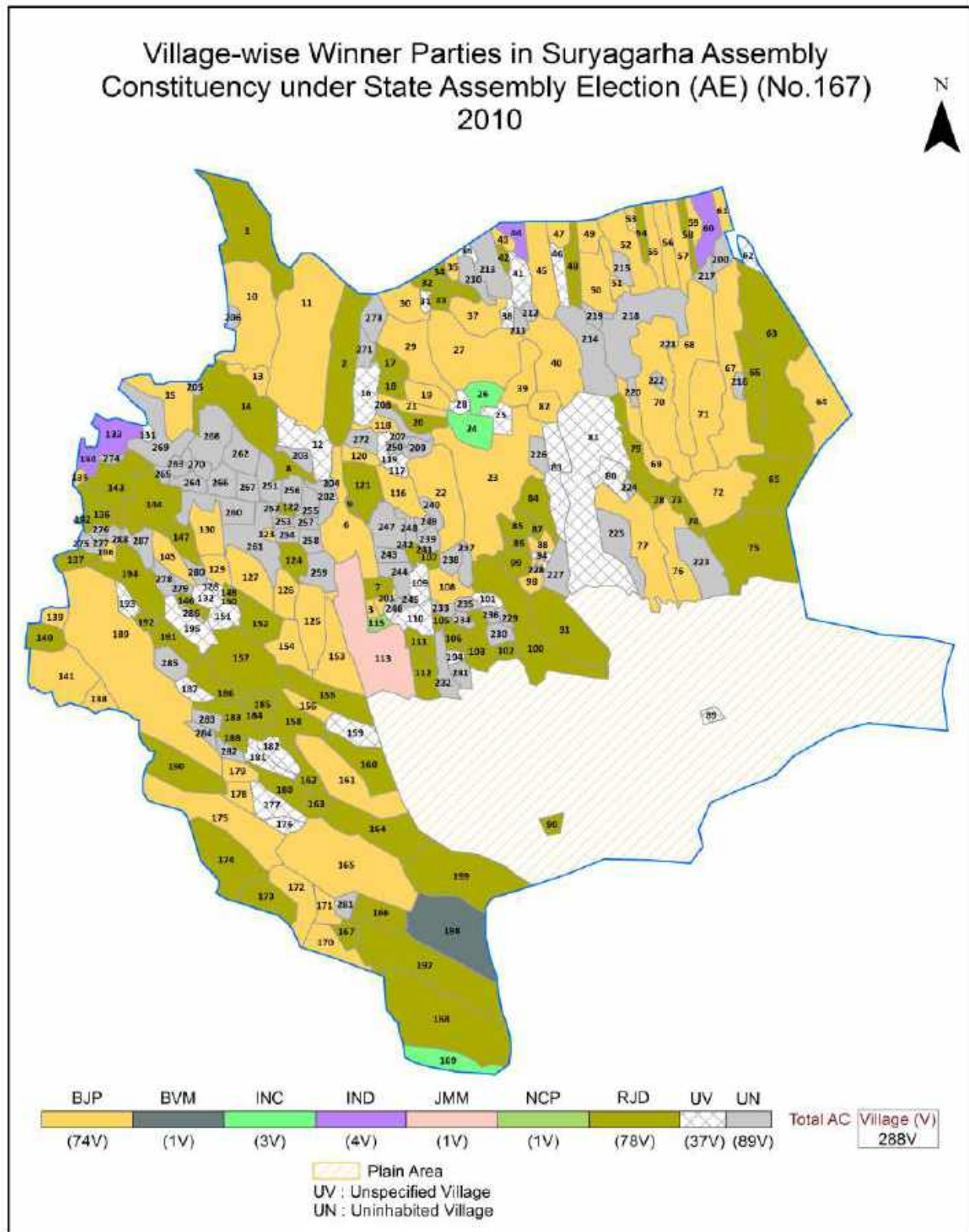
All rights reserved. No part of this book may be reproduced, stored in a retrieval system or transmitted in any form or by any means, mechanical photocopying, photographing, scanning, recording or otherwise without the prior written permission of the publisher. Please refer to Disclaimer at page no. 239 for the use of this publication.

Printed in India

No.	Particulars	Page No.
	<b>Introduction</b>	
1	Assembly Constituency - (Vidhan Sabha) at a Glance   Features of Assembly as per Delimitation Commission of India (2008)	1-2
	<b>Location and Political Maps</b>	
2	Location Map   Boundaries of Assembly Constituency - (Vidhan Sabha in District   Boundaries of Assembly Constituency under Parliamentary Constituency - (Lok Sabha)   Village-wise Winner Parties- 2024, 2019, 2015, 2014, 2010 and 2009	3-11
	<b>Administrative Setup (2011)</b>	
3	District   Sub-district   Towns   Villages   Inhabited Villages   Uninhabited Villages   Village Panchayat   Intermediate Panchayat	11-22
	<b>Demographics (2011)</b>	
4	Population   Households   Rural/Urban Population   Villages by Population Size   Sex Ratio (Total & 0-6 Years)   Religious Population   Social Population   Literacy Rate	23-24
	<b>Electoral Features</b>	
5	Important Dates of Last Elections Held   Electors by Gender   Service Electors   Voters   Voters Turnout   Polling Stations & Average Number of Electors per Polling Station   Electors by Age Group   Present Elected Representatives	25-30
	<b>Historical Summary Election Results</b>	
6	Vote Share of Major Parties   Winning Margin (Number & Percentage   Polarity of Parties   Summary Result of Assembly Segment of Parliamentary Elections 2024, 2020, 2019, 2014, 2009, 2004 and 1999   Summary Result of Assembly Elections 2020, 2015, 2010, 2005 (Oct), 2005 (Feb), 2000, 1995, 1990, 1985, 1980, 1977, 1972, 1969, 1967, 1962 and 1957	31-57
	<b>Polling Station Level Election Results</b>	
7	Name and Number of Polling Station 2024, 2019, 2015, 2014, 2010 and 2009   Polling Station-wise Electors, Voters & Voters Turnout 2024, 2019, 2015, 2014, 2010 and 2009   Polling Station wise Elections Results 2024, 2019, 2015, 2014, 2010 and 2009	58-218
	<b>Share of Assembly Constituency</b>	
8	Share of Assembly Constituency - (Vidhan Sabha) in State, District and Parliamentary Constituency - (Lok Sabha)	219
	<b>Socio-Economic Amenities (2011)</b>	
9	Access to Administrative Units   Agricultural, Manufacturing and Industrial Commodities   Demographic Indicators   Education   Health & Manpower   Drinking Water Supply   Sanitation   Entertainment and Recreations Infrastructure   Power   Food Allocation Distribution and Marketing of Agriculture Commodities Infrastructure   Transport and Road Infrastructure   Communication   Banking and Financial Services   Land Use   Irrigation Source	221-235
10	<b>Abbreviation &amp; Sources</b>	236-238
11	<b>Disclaimer</b>	239



## Location & Political Map



## Administrative Setup

### List of Village Panchayat & Intermediate Panchayat (Block) Name - 2011

Village Name	Village Panchayat Name	Intermediate Panchayat Name
Abgil Chak	Awgil Rampur	Surajgarha
Abgil Chak Abdul Fata	Awgil Rampur	Surajgarha
Abgil Hasimpur	Awgil Rampur	Surajgarha
Abgil Rampur	Awgil Rampur, Kiranpur	Surajgarha
Adupur	Mohamdpur	Surajgarha
Agaia	Gohri	Chanan*
Aima Mustafapur	Slempur East	Surajgarha
Alakhpura	Amarpur	Surajgarha
Alibali	Ramchandarpur	Pipariya
Alinagar	Alinagar, Chandanpura	Surajgarha
Amarpur	Bansipur, Tajpur	Surajgarha
Amarpur	Shri Kishun	Surajgarha
Amarpur	Amarpur	Surajgarha
Amwari	Bariyarpur	Surajgarha
Anandpur	Saidpura	Pipariya
Arazi Majhiawan	Budhauri Bankar	Surajgarha
Arma	Arma, Toralpur, Slempur East, Rampur	Surajgarha
Balahpur	Gohri	Chanan*
Bannu Bagaicha	Gohri	Chanan*
Bansipur	Bansipur	Surajgarha
Bar	Mohamadpur, Alinagar	Surajgarha
Bara	Urain	Surajgarha
Barare	Gohri	Chanan*
Bariyarpur	Bariyarpur	Surajgarha
Basauni	Kaswa, Ghosaith	Surajgarha
Basdeopur	Shri Kishun	Surajgarha
Basgara	Bansipur	Surajgarha
Baskund	Bhalui	Chanan*
Basmatia	Maheshleta	Chanan*

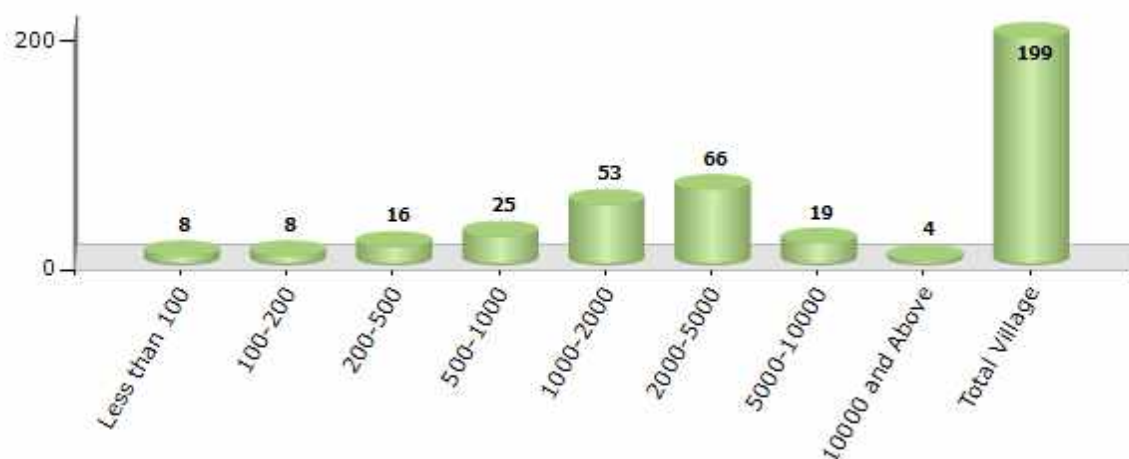
Contd....

## Demographics

### Number of Villages by Population Size - 2011

Less than 100	100-200	200-500	500-1000	1000-2000	2000-5000	5000-10000	10000 and Above	Total Village
8	8	16	25	53	66	19	4	199

Number of Villages by Population Size - 2011

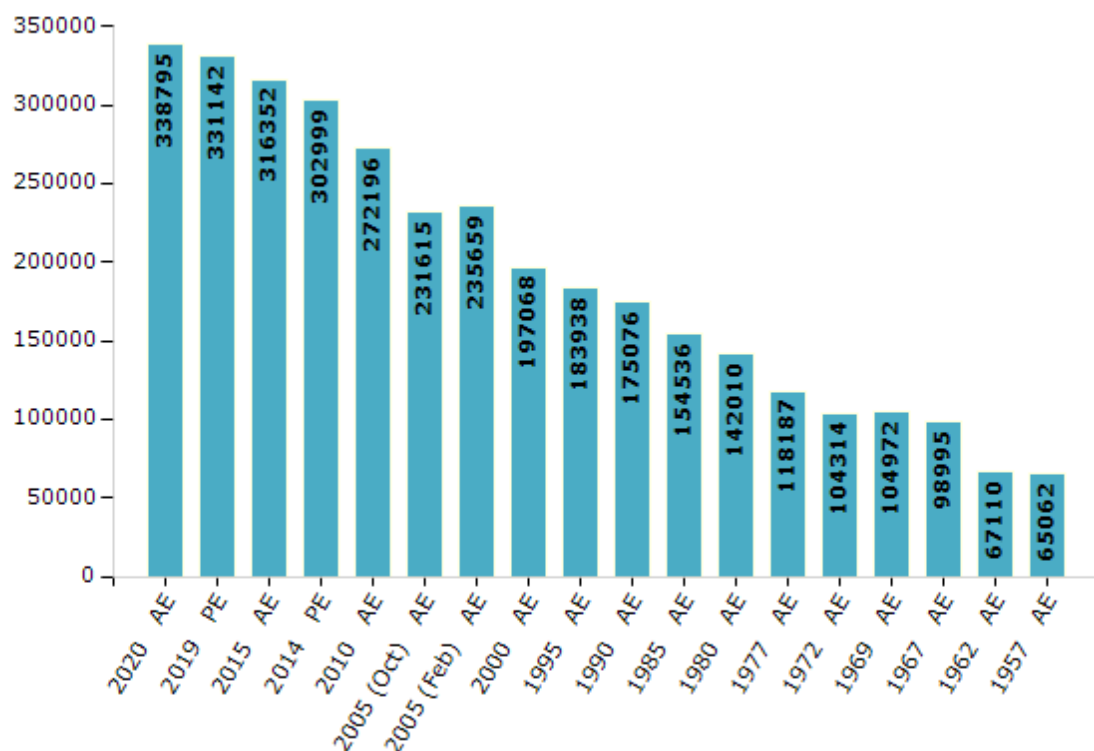


## Electoral Features

### Electors by Male & Female

Year	Male	Female	Others	Total	Year	Male	Female	Others	Total
2020 AE	183081	155711	3	338795	1995 AE	96793	87145	-	183938
2019 PE	179062	152077	3	331142	1990 AE	92380	82696	-	175076
2015 AE	171079	145271	2	316352	1985 AE	79217	75319	-	154536
2014 PE	163239	139758	2	302999	1980 AE	78043	63967	-	142010
2010 AE	148125	124071	0	272196	1977 AE	65007	53180	-	118187
2009 PE	-	-	-	-	1972 AE	57381	46933	-	104314
2005 (Oct) AE	124460	107155	-	231615	1969 AE	55136	49836	-	104972
2005 (Feb) AE	126594	109065	-	235659	1967 AE	-	-	-	98995
2004 PE	-	-	-	-	1962 AE	-	-	-	67110
2000 AE	104545	92523	-	197068	1957 AE	-	-	-	65062
1999 PE	-	-	-	-	1952 AE	-	-	-	-

Number of Electors



**Note :** AE : Assembly Election, PE : Assembly Segment of Parliamentary Election



## Historical Summary Election Results

### Summary Result of Assembly Election - 2015

Candidate Name	Party	Votes	Votes %
Prahlad Yadav	RJD	82490	50.2
Prem Ranjan Patel	BJP	52460	31.92
Pramod Shurma	CPI	6539	3.98
Sarvan Kumar Anand	IND	4765	2.9
Nityanand Kumar	IND	4200	2.56
Bikramaditya Kumar Singh	IND	2908	1.77
Girish Bind	SKLP	2152	1.31
Rajo Manjhi	IND	1456	0.89
Sunil Kumar Raut	BSP	1104	0.67
Nivedita Kumari	IND	966	0.59
Kamleshwari Mahto	IND	705	0.43
Ramanuj Pd. Singh	SP	638	0.39
Jitendra Shukla	ABHM	441	0.27
Uchit Kumar	IND	417	0.25
Akaleshwar Bhagat	IND	379	0.23
	NOTA	2707	1.65

## Polling Station Level Election Results

### Number and Name of Polling Stations (PS) (2015)

Number of Polling Stations	Name of Polling Stations	Number of Polling Stations	Name of Polling Stations
1	Utkramit Madhya Vidyalay Pipariya Dih	21	Utkramit Madhya Vidyalay Rahatapur Sthit Kasauy
2	Utkramit Madhya Vidyalay Pathua	22	Utkramit Madhya Vidyalay Saidapura Uttari Bhag
3	Prathamik Vidyalay Kanharapur	23	Utkramit Madhya Vidyalay Saidapura Dakshini Bhag
4	Madhya Vidyalay Walipur	24	Utkramit Madhya Vidyalay Surajichak
5	Uchcha Vidyalay Walipur	25	Prathamik Vidyalay Kasauy Sthit Chananiya
6	Utkramit Kanya Madhya Vidyalay Walipur (Uttaribhag)	26	Prathamik Vidyalay Anandapur
6A	Utkramit Kanya Madhya Vidyalay Walipur (Uttaribhag)	27	Utkramit Madhya Vidyalay Jajabara
7	Utkramit Kanya Madhya Vidyalay Balipur (Dakshini Bhag)	28	Madhya Vidyalay Pabaiy Purana Bhavan
8	Madhya Vidyalay Mohanapur Puravi Bhag	29	Madhya Vidyalay Pabaiy Naya Bhavan
9	Madhya Vidyalay Mohanapur Pashchimi Bhag	30	Panchayat Bhavan Alinagar
10	Utkramit Madhya Vidyalay Hasanapur	31	Uchcha Vidyalay Alinagar Uttari Bhag
11	Rashtiy Garraamin Niyojan Karyakram Bhavan Mudavariya	32	Uchcha Vidyalay Alinagar Dakshini Bhag
12	Prathamik Vidyalay Mudavariya Purabari Tola	33	Madhya Vidyalay Alinagar Bayan Bhag
13	Panchayat Bhavan Mohanapur	34	Madhya Vidyalay Alinagar Dayan Bhag
14	Utkramit Madhya Vidyalay Koyalaba Ramachandrapur Naya	35	Samudayik Bhavan Gausapur
15	Uchcha Vidyalay Ramachandrapur	36	Madhya Vidyalay Pokharama- Purwi Kinara Purvi Bhag
16	Prathamik Vidyalay Alivali Sthit Ramachandrapur	37	Madhya Vidyalay Pokharama - Purvi Kinara Pashchimi Bhag
17	Madhya Vidyalay Ramachandrapur (Pashchchimi Bhag)	38	Madhya Vidyalay Pokharama -Pashchimi Kinara
18	Madhya Vidyalay Ramachandrapur Puravi Bhag	39	Utkramit Madhya Vidyalay Mohammadapur
19	Madhya Vidyalay Ramachandrapur Madhya Bhag	40	Utkramit Madhya Vidyalay Ratanupur
20	Madhya Vidyalay Ramanagar	40A	Utkramit Madhya Vidyalay Ratanupur

Contd....

## Polling Station Level Election Results

### Polling Station-wise Votes Secured by Overall Top Five Parties in Suryagarha Assembly in Assembly Election (AE) under Munger Parliamentary Constituency in Bihar (2015)

Number of Polling Station	Winner - Prahlad Yadav (RJD)	Runner-up - Prem Ranjan Patel (BJP)	3rd - Pramod Shrma (CPI)	4th - Sarvan Kumar Anand (IND)	5th - Nityanand Kumar (IND)	NOTA	Other	Total Votes Secured
35	19	94	7	1	13	1	16	151
36	37	222	26	6	1	13	20	325
37	9	200	36	1	3	5	11	265
38	26	485	17	1	5	3	13	550
39	245	209	26	17	246	10	53	806
40	222	136	20	10	42	6	28	464
40A	191	106	21	16	17	10	32	393
41	41	3	3	5	522	5	39	618
42	51	4	5	2	544	20	51	677
43	418	82	4	27	51	7	22	611
44	561	107	6	10	90	7	29	810
45	335	49	10	18	16	18	19	465
45A	306	37	7	24	38	12	15	439
46	274	121	10	24	2	6	18	455
47	170	216	29	8	9	7	20	459
48	234	196	1	13	3	0	5	452
49	212	80	11	6	1	1	4	315
50	274	334	18	9	22	11	53	721
51	314	77	20	27	6	7	21	472
51A	189	199	15	2	10	1	14	430
52	385	411	11	42	5	14	37	905
53	399	346	19	13	11	6	32	826
54	623	100	9	20	15	15	27	809
55	348	88	4	13	3	3	19	478
56	288	145	16	22	11	2	24	508
57	319	141	8	18	16	9	35	546
58	65	447	7	5	4	6	38	572
59	142	232	8	17	3	7	22	431
60	244	411	7	19	4	9	24	718
61	252	392	6	24	22	21	54	771
62	306	125	20	13	58	8	43	573
63	37	522	9	2	3	3	34	610
64	258	169	19	15	7	12	59	539
65	689	39	6	15	1	7	18	775
66	288	61	3	18	3	5	21	399

Contd....

## Polling Station Level Election Results

**Winner, Runner-up and 3rd Party Position & Winning Margin According to Polling Stations in Suryagarha Assembly in Assembly Election (AE) under Munger Parliamentary Constituency in Bihar (2015)**

Polling Station Number	Winner Party	Winner Votes (%)	Runner-up Party	Runner-up Votes (%)	Winning Margin Votes (%)	Third Party	Third Party Votes (%)	Other Votes (%)
67	BJP	196 (80)	RJD	31 (12.65)	165 (67.35)	IND (NK)	4 (1.63)	14 (5.71)
68	RJD	256 (46.55)	BJP	232 (42.18)	24 (4.37)	IND (BKS)	15 (2.73)	47 (8.55)
69	RJD	404 (56.5)	BJP	187 (26.15)	217 (30.35)	CPI	25 (3.5)	99 (13.85)
70	RJD	391 (60.34)	BJP	171 (26.39)	220 (33.95)	IND (SKA)	18 (2.78)	68 (10.49)
71	RJD	416 (70.39)	BJP	73 (12.35)	343 (58.04)	IND (SKA)	34 (5.75)	68 (11.51)
72	RJD	535 (83.33)	SKLP	27 (4.21)	508 (79.12)	BJP	24 (3.74)	56 (8.72)
73	RJD	482 (69.65)	BJP	129 (18.64)	353 (51.01)	IND (SKA)	24 (3.47)	57 (8.24)
74	RJD	206 (70.79)	BJP	51 (17.53)	155 (53.26)	IND (NYK)	17 (5.84)	17 (5.84)
75	RJD	388 (58.88)	BJP	173 (26.25)	215 (32.63)	IND (BKS)	21 (3.19)	77 (11.68)
76	RJD	255 (50.5)	BJP	148 (29.31)	107 (21.19)	IND (SKA)	27 (5.35)	75 (14.85)
77	RJD	323 (57.37)	BJP	141 (25.04)	182 (32.33)	IND (SKA)	24 (4.26)	75 (13.32)
78	RJD	307 (79.12)	BJP	38 (9.79)	269 (69.33)	IND (SKA)	15 (3.87)	28 (7.22)
79	RJD	507 (76.13)	BJP	106 (15.92)	401 (60.21)	IND (SKA)	20 (3)	33 (4.95)
80	RJD	202 (57.55)	BJP	97 (27.64)	105 (29.91)	CPI	15 (4.27)	37 (10.54)
81	RJD	404 (55.49)	BJP	193 (26.51)	211 (28.98)	IND (SKA)	30 (4.12)	101 (13.87)
82	RJD	383 (51.62)	BJP	275 (37.06)	108 (14.56)	IND (SKA)	23 (3.1)	61 (8.22)
83	BJP	311 (50.41)	RJD	104 (16.86)	207 (33.55)	SKLP	71 (11.51)	131 (21.23)
84	BJP	302 (37.28)	RJD	206 (25.43)	96 (11.85)	SKLP	151 (18.64)	151 (18.64)
85	RJD	322 (41.98)	BJP	231 (30.12)	91 (11.86)	SKLP	49 (6.39)	165 (21.51)
86	RJD	376 (58.75)	BJP	138 (21.56)	238 (37.19)	SKLP	39 (6.09)	87 (13.59)
87	SKLP	263 (37.73)	RJD	165 (23.67)	98 (14.06)	BJP	129 (18.51)	140 (20.09)
88	RJD	386 (53.46)	BJP	248 (34.35)	138 (19.11)	IND (SKA)	28 (3.88)	60 (8.31)
89	RJD	503 (61.19)	BJP	236 (28.71)	267 (32.48)	CPI	19 (2.31)	64 (7.79)
90	RJD	302 (48.4)	BJP	175 (28.04)	127 (20.36)	CPI	19 (3.04)	128 (20.51)
91	SKLP	233 (42.06)	RJD	139 (25.09)	94 (16.97)	BJP	69 (12.45)	113 (20.4)
92	SKLP	180 (36.44)	RJD	99 (20.04)	81 (16.4)	BJP	56 (11.34)	159 (32.19)
93	RJD	465 (75.24)	BJP	95 (15.37)	370 (59.87)	IND (SKA)	28 (4.53)	30 (4.85)
94	RJD	426 (81.14)	BJP	61 (11.62)	365 (69.52)	IND (SKA)	18 (3.43)	20 (3.81)
95	RJD	351 (69.37)	BJP	103 (20.36)	248 (49.01)	IND (SKA)	14 (2.77)	38 (7.51)
96	RJD	253 (51.01)	BJP	146 (29.44)	107 (21.57)	IND (NK)	44 (8.87)	53 (10.69)
97	RJD	305 (66.89)	BJP	88 (19.3)	217 (47.59)	IND (SKA)	13 (2.85)	50 (10.96)
98	BJP	195 (64.57)	RJD	42 (13.91)	153 (50.66)	CPI	21 (6.95)	44 (14.57)
98A	BJP	290 (72.86)	RJD	53 (13.32)	237 (59.54)	CPI	17 (4.27)	38 (9.55)
99	BJP	274 (37.33)	RJD	237 (32.29)	37 (5.04)	CPI	106 (14.44)	117 (15.94)
100	BJP	208 (50.24)	RJD	162 (39.13)	46 (11.11)	IND (SKA)	11 (2.66)	33 (7.97)

Contd....

## Socio-Economic Amenities - Rural

### Access to Education Facilities

Particulars	Number of Villages (% of Population)				
	Available	Not Available	If Not Available (Distance of Nearest Facility)		
			A	B	C
Govt. Primary School	178 (97)	21 (3)	17 (1)	0 (0)	0 (0)
Private Primary School	20 (17)	179 (83)	2 (0)	0 (0)	0 (0)
Govt. Middle School	129 (84)	70 (16)	58 (14)	8 (1)	0 (0)
Private Middle School	11 (7)	188 (93)	1 (0)	0 (0)	0 (0)
Govt. Secondary School	30 (27)	169 (73)	94 (46)	61 (22)	9 (3)
Private Secondary School	4 (1)	195 (99)	1 (0)	0 (0)	1 (1)
Govt. Senior Secondary School	10 (13)	189 (87)	67 (35)	58 (23)	56 (22)
Private Senior Secondary School	5 (5)	194 (95)	3 (2)	1 (1)	0 (0)
Govt. Arts and Science Degree College	3 (4)	196 (96)	25 (15)	38 (21)	129 (58)
Private Arts and Science Degree College	1 (1)	198 (99)	2 (1)	0 (0)	1 (0)
Govt. Engineering College	0 (0)	199 (100)	0 (0)	0 (0)	0 (0)
Private Engineering College	0 (0)	199 (100)	6 (5)	30 (15)	163 (80)
Govt. Medicine College	0 (0)	199 (100)	0 (0)	0 (0)	198 (100)
Private Medicine College	0 (0)	199 (100)	0 (0)	0 (0)	1 (0)
Govt. Management Institute	0 (0)	199 (100)	0 (0)	0 (0)	198 (100)
Private Management Institute	0 (0)	199 (100)	0 (0)	0 (0)	1 (0)
Govt. Polytechnic	0 (0)	199 (100)	6 (5)	30 (15)	163 (80)
Private Polytechnic	0 (0)	199 (100)	0 (0)	0 (0)	0 (0)
Govt. Vocational Training School/ITI	0 (0)	199 (100)	0 (0)	0 (0)	0 (0)
Private Vocational Training School/ITI	0 (0)	199 (100)	4 (3)	31 (21)	164 (76)
Govt. Non Formal Training Centre	3 (2)	196 (98)	6 (5)	29 (13)	161 (80)
Private Non Formal Training Centre	0 (0)	199 (100)	0 (0)	0 (0)	0 (0)
Govt. School For Disabled	0 (0)	199 (100)	0 (0)	0 (0)	199 (100)
Private School For Disabled	0 (0)	199 (100)	0 (0)	0 (0)	0 (0)
Government Others	0 (0)	199 (100)	6 (5)	30 (15)	163 (80)
Private Others	0 (0)	199 (100)	0 (0)	0 (0)	0 (0)

Note : Distance A : Less than 5 km; B : Between 5-10 km; C : 10+ km.; Source : Data Analysis is based on 2011 Census.

## DISCLAIMER

The Terms of Use and Disclaimer of Datanet India Private Limited (hereinafter referred to as "Datanet") for use of this analysis report of **Suryagarha Assembly Constituency (Suryagarha Vidhan Sabha)** :-

1. **Assembly Factbook™** is a Registered Trade Mark owned by Datanet.
2. All the maps are sketched and graphical representation only and have not been drawn to the scale and also not to represent the actual geographical area or boundary of the unit.
3. The data for the aforesaid analysis is based on authentic sources and has been culled from the various publications of Census, CSO and NSSO for district and block level data, various central and state government departments, Central & State Elections Commissions and the concerned Returning Officers' releases, Electoral Rolls, Election results and allied publications, internal assessment, surveys, estimates and analysis. Therefore, certain adjustment of data at micro level may have been done to arrive closer to the macro data.
4. Data have been provided on an "As Is" and "As AVAILABLE" basis
5. The colours shown in the maps or diagram and charts of a particular party, alliance or AC are indicative and do not represent them.
6. This publication which includes maps, sheets, graphs and data would be the property under copyright of Datanet only. The user may use these for its internal study, analysis and research purposes. It's public display, re-selling or any commercial uses by the user are not allowed.
7. Datanet has taken due care and caution in compilation and processing of data and allied information, but does not guarantee the accuracy, adequacy or completeness of any information/analysis and will be not responsible for any errors or omissions or for the results obtained from the use of such information/analysis.
8. All the contents for the publication have been culled from various authentic sources and Datanet reasonably believes such sources to be reliable, but does not make any representations, express or implied as to the accuracy or fitness of use of such information. The information or contents of the information/analysis do not constitute advice and should not be relied upon in making (or refraining from making) any decision. Any reliance placed upon the information provided by Datanet is the sole responsibility and strictly at the user's risk.
9. In no event will Datanet be liable for any damages (including, without limitation, damages for loss of business projects, or loss of profits) arising in contract, tort or otherwise from the use of or inability to use any of its contents, or from any action taken (or refrained from being taken) as a result of using the analysis or any of its contents. Datanet its directors, owners, editors, officials, employees, distributor and agents or any associate will not be liable for any errors in the information contained or any consequences arising from the use of the contents of the provided information/analysis.
10. If any provision of these terms and conditions is held invalid or illegal or unenforceable for any reason by any court of competent jurisdiction, such provision shall be severed and the remainder of provisions of the terms and conditions shall continue in full force and effect as if the Term of Use had been executed with the invalid, illegal or unenforceable provision eliminated.
11. If there are any discrepancies in the information provided, please bring it to attention of Datanet for suitable rectification measures.



**Buy Online This Complete Book At  
Datanet India eBooks Store**

**[www.indiastatpublications.com](http://www.indiastatpublications.com)**

**or go directly at**

**[http://www.indiastatpublications.com/  
Assembly\\_factbook/Bihar/Munger/ Suryagarha](http://www.indiastatpublications.com/Assembly_factbook/Bihar/Munger/Suryagarha)**

 **indiastat**elections

ISBN : 978-93-5301-195-1

