



Bihar

Assembly Factbook™

Gaighat Assembly Constituency



Key Electoral Data of Gaighat
Assembly Constituency (Vidhan Sabha)

Bihar

Assembly Factbook™

Gaighat Assembly Constituency



Gaighat Vidhan Sabha

Editor & Director

Dr. R.K. Thukral

Research Editor

Dr. Shafeeq Rahman

Compiled, Researched and Published by Datanet India Pvt. Ltd.

D-100, 1st Floor,

Okhla Industrial Area, Phase-I,
New Delhi- 110020.

Ph.: 91-11- 43580781-84

Email : support@indiastatpublications.com

Website : www.indiastatelections.com

Online Book Store :

www.indiastatpublications.com

Report No. : AFB/BR-088-0125

ISBN : 978-93-5313-079-4

First Edition : January, 2018

Eighth Updated Edition : January, 2025

Price : Rs. 11500/-

US\$ 310

© Datanet India Pvt. Ltd.

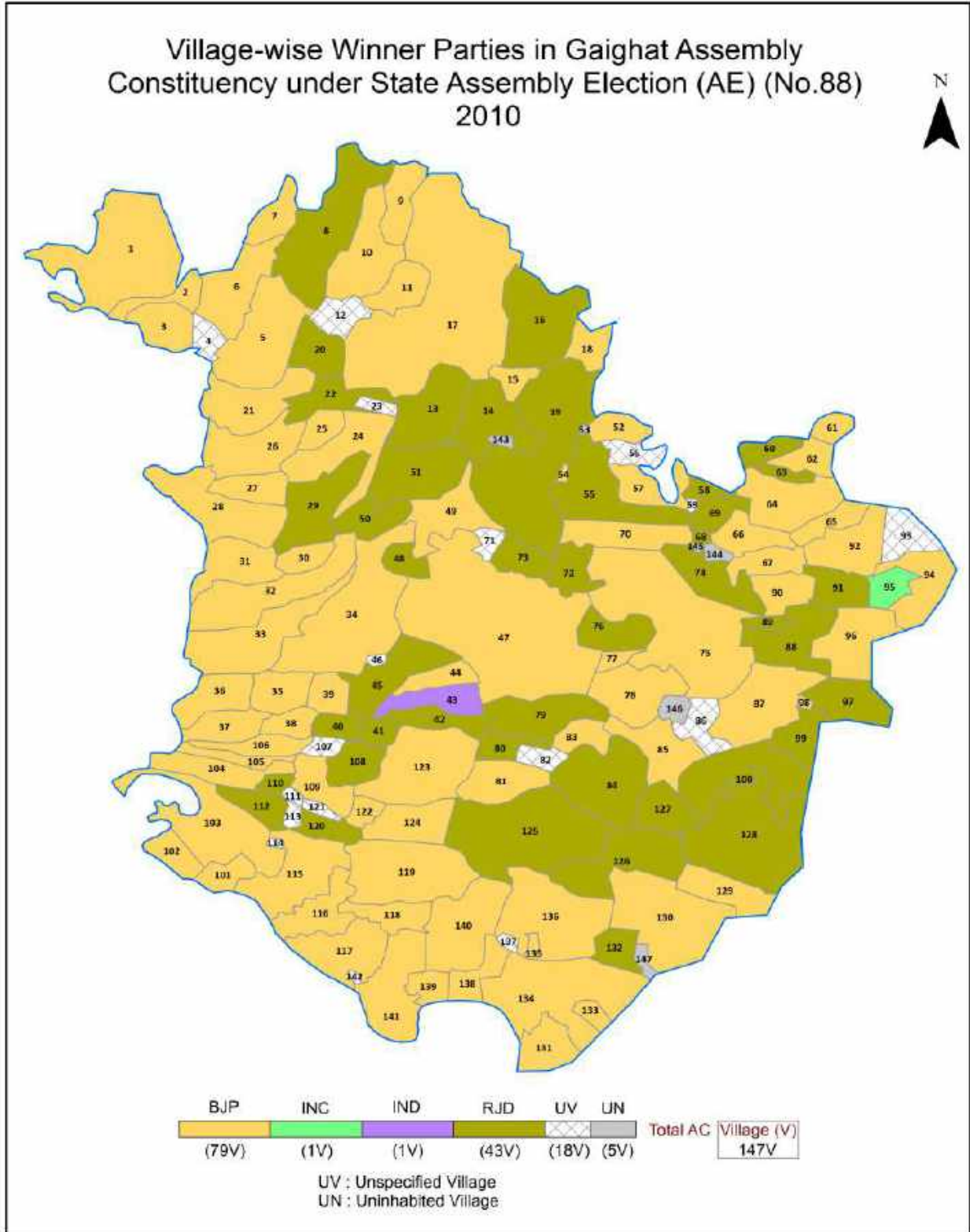
All rights reserved. No part of this book may be reproduced, stored in a retrieval system or transmitted in any form or by any means, mechanical photocopying, photographing, scanning, recording or otherwise without the prior written permission of the publisher. Please refer to Disclaimer at page no. 231 for the use of this publication.

Printed in India

Contents

No.	Particulars	Page No.
	Introduction	
1	Assembly Constituency - (Vidhan Sabha) at a Glance Features of Assembly as per Delimitation Commission of India (2008)	1-2
	Location and Political Maps	
2	Location Map Boundaries of Assembly Constituency - (Vidhan Sabha) in District Boundaries of Assembly Constituency under Parliamentary Constituency - (Lok Sabha) Village-wise Winner Parties- 2024, 2020, 2019, 2014, 2010 and 2009	3-11
	Administrative Setup (2011)	
3	District Sub-district Towns Villages Inhabited Villages Uninhabited Villages Village Panchayat Intermediate Panchayat	11-18
	Demographics (2011)	
4	Population Households Rural/Urban Population Villages by Population Size Sex Ratio (Total & 0-6 Years) Religious Population Social Population Literacy Rate	19-20
	Electoral Features	
5	Important Dates of Last Elections Held Electors by Gender Service Electors Voters Voters Turnout Polling Stations & Average Number of Electors per Polling Station Electors by Age Group Present Elected Representatives	21-26
	Historical Summary Election Results	
6	Vote Share of Major Parties Winning Margin (Number & Percentage) Polarity of Parties Summary Result of Assembly Segment of Parliamentary Elections 2024, 2019, 2014, 2009, 2004 and 1999 Summary Result of Assembly Elections 2020, 2015, 2010, 2005 (Oct), 2005 (Feb), 2000, 1995, 1990, 1985, 1980, 1977, 1972, 1969 and 1967	27-50
	Polling Station Level Election Results	
7	Name and Number of Polling Station 2024, 2020, 2019, 2014, 2010 and 2009 Polling Station-wise Electors, Voters & Voters Turnout 2024, 2020, 2019, 2014, 2010 and 2009 Polling Station wise Elections Results 2024, 2020, 2019, 2014, 2010 and 2009	51-210
	Share of Assembly Constituency	
8	Share of Assembly Constituency - (Vidhan Sabha) in State, District and Parliamentary Constituency - (Lok Sabha)	211
	Socio-Economic Amenities (2011)	
9	Access to Administrative Units Agricultural, Manufacturing and Industrial Commodities Demographic Indicators Education Health & Manpower Drinking Water Supply Sanitation Entertainment and Recreations Infrastructure Power Food Allocation Distribution and Marketing of Agriculture Commodities Infrastructure Transport and Road Infrastructure Communication Banking and Financial Services Land Use Irrigation Source	213-227
10	Abbreviation & Sources	228-230
11	Disclaimer	231

Location & Political Map



Administrative Setup

List of Village Panchayat & Intermediate Panchayat (Block) Name - 2011

Village Name	Village Panchayat Name	Intermediate Panchayat Name
Ajitpur urf Harpur	Pirapur	Bandra
Amma	Madhepura	Katra
Arazi Nankar	Patsara	Bandra
Arazi Pirhari	Berua	Gaighat
Asia	Berua	Gaighat
Bagha Khal urf Nabipur	Baghakhal	Gaighat
Bahadurpur	Bakhri	Gaighat
Bakhri	Sonapur	Katra
Bakhri	Bakhri	Gaighat
Bakhri Kaila	Nonphara	Bandra
Balgaon	Nonphara	Bandra
Balha	Ladaur	Gaighat
Balha urf Belahi	Bargawan	Bandra
Bandra	Bandra	Bandra
Bangra	Sundarpur Ratwara	Bandra
Baraila	Shivdaha	Gaighat
Bargawan	Bargawan	Bandra
Barhmotra urf Parmanandpur	Bakhri	Gaighat
Bariarpur urf Karpur	Nonphara	Bandra
Baruari urf Jagdishpur Baruari	Baruari	Gaighat
Basant	Shivdaspur	Katra
Bela Gopi	Bakhri	Gaighat
Belaur Nidhi urf Belaur Thana	Balaur Nidhi	Gaighat
Bengahi urf Mahinathpur	Bargawan	Bandra
Berai	Berae North, Berae South	Katra
Berwa urf Ibrahimpur Pirahari	Berua	Gaighat
Bhagwatpur	Balaur Nidhi	Gaighat
Bharampur Sital	Keotsa	Gaighat
Bhorpura Garib	Kamarathu	Gaighat

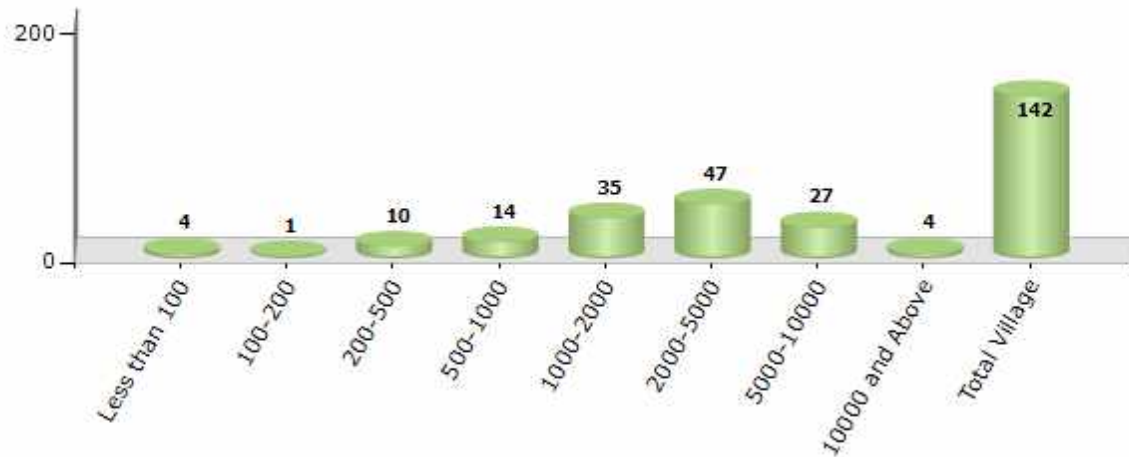
Contd....

Demographics

Number of Villages by Population Size - 2011

Less than 100	100-200	200-500	500-1000	1000-2000	2000-5000	5000-10000	10000 and Above	Total Village
4	1	10	14	35	47	27	4	142

Number of Villages by Population Size - 2011

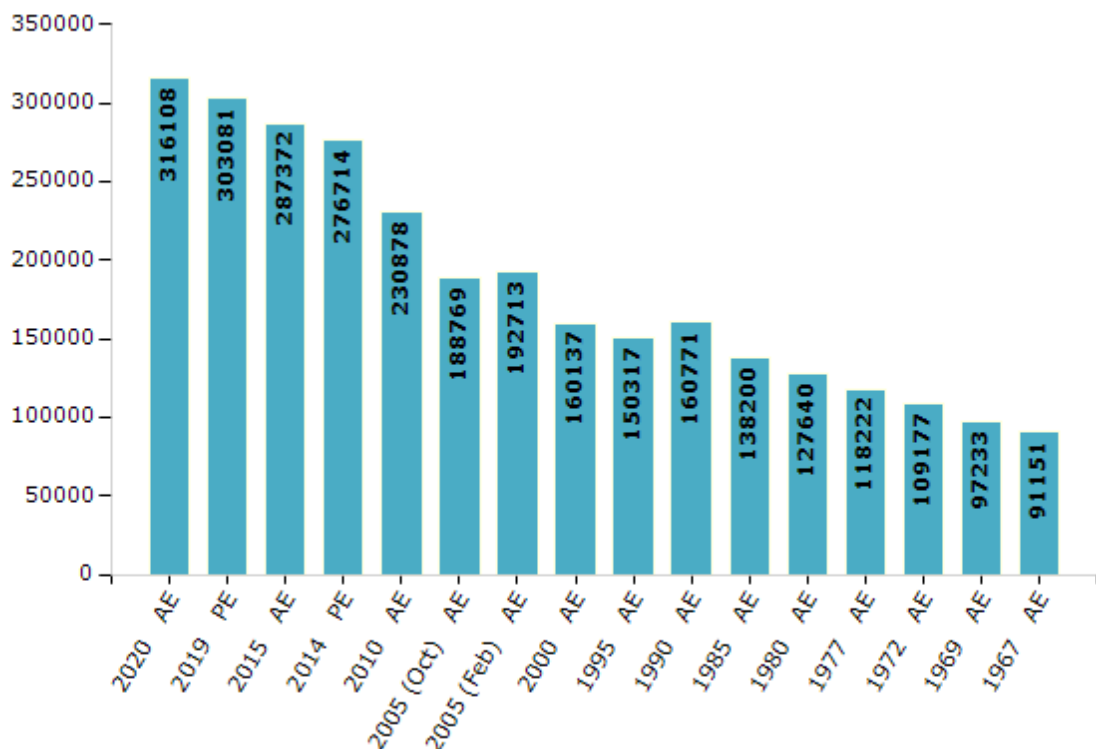


Electoral Features

Electors by Male & Female

Year	Male	Female	Others	Total	Year	Male	Female	Others	Total
2020 AE	166475	149627	6	316108	1995 AE	77104	73213	-	150317
2019 PE	160776	142302	3	303081	1990 AE	86264	74507	-	160771
2015 AE	153220	134149	3	287372	1985 AE	72040	66160	-	138200
2014 PE	147434	129276	4	276714	1980 AE	67578	60062	-	127640
2010 AE	122731	108147	0	230878	1977 AE	61752	56470	-	118222
2009 PE	-	-	-	-	1972 AE	57182	51995	-	109177
2005 (Oct) AE	100298	88471	-	188769	1969 AE	52753	44480	-	97233
2005 (Feb) AE	106647	86066	-	192713	1967 AE	-	-	-	91151
2004 PE	-	-	-	-	1962 AE	-	-	-	-
2000 AE	84157	75980	-	160137	1957 AE	-	-	-	-
1999 PE	-	-	-	-	1952 AE	-	-	-	-

Number of Electors



Note : AE : Assembly Election, PE : Assembly Segment of Parliamentary Election

Historical Summary Election Results

Summary Result of Assembly Election - 2015

Candidate Name	Party	Votes	Votes %
Maheshwar Prasad Yadav	RJD	67313	40.8
Veena Devi	BJP	63812	38.68
Ashok Kumar Singh	IND	7826	4.74
Vishal Kumar	JDR	2822	1.71
Vakil Sahani	SKLP	2421	1.47
Abdul- Wahab	BSP	2324	1.41
Rani Singh	IND	2262	1.37
Md. Najul Ansari	IND	2112	1.28
Raghunandan Pd Singh	IND	1885	1.14
Jitendra Yadav	CPI(ML)(L)	1698	1.03
Subhash Choudhary	IND	1445	0.88
Amrita Singh	GJDS	1418	0.86
Devendra Prasad Yadav	SP	1191	0.72
Prabhu Sahani	BJKVP	931	0.56
Suraj Sahni	IND	891	0.54
Suresh Kumar	IND	713	0.43
Brajkishore Ray	BhaSP	701	0.42
Jivneshwar Jha	AIFB	619	0.38
Kapildev Singh	BKP	566	0.34
Kameshwar Thakur	BJND	489	0.3
Kamaldev Ram	BMUP	456	0.28
	NOTA	1070	0.65

Polling Station Level Election Results

Number and Name of Polling Stations (PS) (2020)

Number of Polling Stations	Name of Polling Stations	Number of Polling Stations	Name of Polling Stations
1	Utkarmit Madhay Vidyalay Manaki Kanya Uttari Bhag	13A	Madhya Vidyalay ,Sohajan Purab Bhag
2	Utkarmit Madhay Vidyalay Manaki Kanya Dakshin Bhag	14	Madhya Vidyalay, Sohijan Uttar Bhag
3	Uchcha Vidyalay Berai, Uttari Bhag	14A	Madhya Vidyalay, Sohijan Uttar Bhag
4	Uchcha Vidyalay Berai, Dakshini Bhag	15	Uchcha Vidyalay, Dhanaur, Dakshini Bhag
4A	Uchcha Vidyalay Berai, Dakshini Bhag	15A	Uchcha Vidyalay, Dhanaur, Dakshini Bhag
5	Uchcha Vidyalay Berai, Madhya Bhag	16	Uchcha Vidyalay, Dhanaur, Uttar Bhag
5A	Uchcha Vidyalay Berai, Madhya Bhag	17	Besik Skul, Dhanaur Bayo Bhag
6	Utkramit Madhya Vidyalay Berai Kanya Uttari Bhag	17A	Besik Skul, Dhanaur Bayo Bhag
6A	Utkramit Madhya Vidyalay Berai Kanya Uttari Bhag	18	Besik Skul, Dhanaur, Daya Bhag
7	Utkramit Madhya Vidyalay Berai Kanya Dakshin Bhag	18A	Besik Skul, Dhanaur, Daya Bhag
8	Madhy Vidyalay, Madhepura, Purwi Bhag	19	Utkramit Madhya Vidyalay, Dhanauradih Baya Bhag
8A	Madhy Vidyalay, Madhepura, Purwi Bhag	19A	Utkramit Madhya Vidyalay, Dhanauradih Baya Bhag
9	Madhy Vidyalay, Madhepura, Madhy Bhag	20	Utkramit Madhya Vidyalay, Dhanauradih Dayo Bhag
9A	Madhy Vidyalay, Madhepura, Madhy Bhag	21	Ramajyoti Pustakalay, Dhanaur Uttar Bhag Ke Prangan Me Chalant Matdan Kendra
10	Madhy Vidyalay, Madhepura, Pashchimi Bhag	22	Ramajyoti Pustakalay, Dhanaur Dakshin Bhag Ke Prangan Me Chalant Matdan Kendra
10A	Madhy Vidyalay, Madhepura, Pashchimi Bhag	23	Uttkarmit Madhay Vidyalay, Sohagapur
11	Utkramit Madhy Vidyalay, Amma, Baya Bhag	24	Madhy Vidhaly Shivdasapur Purvi Bhag
11A	Utkramit Madhy Vidyalay, Amma, Baya Bhag	25	Madhya Vidyalay, Shivadasapur,Uttari Bhag
12	Uttkramit Madhy Vidyalay, Amma, Daya Bhag	26	Madhya Vidyalay, Shivadasapur Dakshini Bhag
12A	Uttkramit Madhy Vidyalay, Amma, Daya Bhag	26A	Madhya Vidyalay, Shivadasapur Dakshini Bhag
13	Madhya Vidyalay ,Sohajan Purab Bhag	27	Madhya Vidyalay Shivdasapur (Madhay Bhag)

Contd....

Polling Station Level Election Results

Polling Station-wise Votes Secured by Overall Top Five Parties in Gaighat Assembly in Assembly Election (AE) under Muzaffarpur Parliamentary Constituency in Bihar (2020)

Number of Polling Station	Winner - Niranjan Roy (RJD)	Runner-up - Maheshwar Pd Yadav (JD(U))	3rd - Komal Singh (LJP)	4th - Ganesh Jha (IND)	5th - Sudhir Kumar Jha (JP)	NOTA	Other	Total Votes Secured
22	61	197	135	14	6	3	67	483
23	190	15	94	2	9	7	54	371
24	358	52	109	1	7	0	36	563
25	241	179	75	6	13	8	96	618
26	151	99	35	5	2	3	41	336
26A	76	91	66	8	6	6	43	296
27	NV	NV	NV	NV	NV	NV	NV	NV
27A	57	113	80	7	10	7	46	320
28	29	105	76	9	4	6	41	270
28A	43	145	126	10	6	6	72	408
29	56	161	88	3	5	5	52	370
29A	70	231	39	9	6	4	60	419
30	88	214	57	12	12	7	97	487
31	172	178	117	15	19	13	124	638
32	177	113	40	1	1	0	19	351
32A	206	106	36	6	7	5	46	412
33	135	93	39	4	1	0	20	292
33A	164	65	34	2	3	0	33	301
34	57	160	81	11	4	4	72	389
34A	172	155	63	7	3	6	56	462
35	149	192	86	10	10	9	70	526
36	64	176	68	17	4	5	53	387
36A	16	127	65	2	1	0	18	229
37	129	66	91	10	0	13	54	363
37A	130	115	44	4	7	2	66	368
38	44	111	107	10	7	7	90	376
39	115	74	199	3	18	8	58	475
40	167	145	73	2	12	5	93	497
41	88	196	67	17	4	3	57	432
41A	57	199	148	10	10	1	63	488
42	76	163	125	8	8	6	60	446
43	91	145	136	6	11	8	83	480
44	21	95	89	10	4	2	32	253
44A	36	91	93	11	5	7	54	297
45	22	35	188	0	10	4	23	282

Contd....

Polling Station Level Election Results

Winner, Runner-up and 3rd Party Position & Winning Margin According to Polling Stations in Gaighat Assembly in Assembly Election (AE) under Muzaffarpur Parliamentary Constituency in Bihar (2020)

Polling Station Number	Winner Party	Winner Votes (%)	Runner-up Party	Runner-up Votes (%)	Winning Margin Votes (%)	Third Party	Third Party Votes (%)	Other Votes (%)
46	LJP	154 (36.41)	JD(U)	116 (27.42)	38 (8.99)	RJD	61 (14.42)	92 (21.75)
47	LJP	166 (38.6)	JD(U)	110 (25.58)	56 (13.02)	RJD	80 (18.6)	74 (17.21)
48	RJD	79 (32.78)	JD(U)	63 (26.14)	16 (6.64)	LJP	41 (17.01)	58 (24.07)
49	JD(U)	284 (45.37)	RJD	149 (23.8)	135 (21.57)	LJP	51 (8.15)	142 (22.68)
50	JD(U)	181 (40.4)	LJP	160 (35.71)	21 (4.69)	RJD	52 (11.61)	55 (12.28)
51	RJD	196 (54.75)	JD(U)	71 (19.83)	125 (34.92)	LJP	9 (2.51)	82 (22.91)
51A	RJD	123 (52.79)	JD(U)	46 (19.74)	77 (33.05)	LJP	44 (18.88)	20 (8.58)
52	JD(U)	189 (38.73)	LJP	183 (37.5)	6 (1.23)	RJD	48 (9.84)	68 (13.93)
53	RJD	378 (94.03)	?AIFB	8 (1.99)	370 (92.04)	LJP	6 (1.49)	10 (2.49)
53A	RJD	354 (86.55)	?AIFB	15 (3.67)	339 (82.88)	JD(U)	13 (3.18)	27 (6.6)
54	RJD	153 (31.88)	JD(U)	137 (28.54)	16 (3.34)	LJP	109 (22.71)	81 (16.88)
55	JD(U)	145 (31.39)	LJP	117 (25.32)	28 (6.07)	RJD	74 (16.02)	126 (27.27)
56	JD(U)	170 (43.48)	RJD	99 (25.32)	71 (18.16)	LJP	22 (5.63)	100 (25.58)
57	JD(U)	186 (50.41)	LJP	93 (25.2)	93 (25.21)	RJD	37 (10.03)	53 (14.36)
57A	JD(U)	210 (50.72)	RJD	70 (16.91)	140 (33.81)	LJP	42 (10.14)	92 (22.22)
58	JD(U)	133 (30.37)	LJP	91 (20.78)	42 (9.59)	?AIFB	81 (18.49)	133 (30.37)
59	LJP	193 (52.3)	JD(U)	112 (30.35)	81 (21.95)	RJD	25 (6.78)	39 (10.57)
60	RJD	169 (37.98)	LJP	105 (23.6)	64 (14.38)	JD(U)	68 (15.28)	103 (23.15)
61	JD(U)	314 (52.33)	RJD	111 (18.5)	203 (33.83)	LJP	64 (10.67)	111 (18.5)
62	LJP	92 (31.08)	JD(U)	72 (24.32)	20 (6.76)	RJD	49 (16.55)	83 (28.04)
62A	RJD	141 (42.34)	LJP	69 (20.72)	72 (21.62)	JD(U)	51 (15.32)	72 (21.62)
63	JD(U)	189 (49.61)	LJP	66 (17.32)	123 (32.29)	RJD	37 (9.71)	89 (23.36)
63A	JD(U)	159 (42.18)	LJP	94 (24.93)	65 (17.25)	RJD	74 (19.63)	50 (13.26)
64	RJD	215 (50.12)	JD(U)	117 (27.27)	98 (22.85)	LJP	55 (12.82)	42 (9.79)
64A	RJD	351 (81.44)	LJP	30 (6.96)	321 (74.48)	JD(U)	29 (6.73)	21 (4.87)
65	JD(U)	130 (28.51)	RJD	107 (23.46)	23 (5.05)	LJP	76 (16.67)	143 (31.36)
66	JD(U)	163 (39.76)	LJP	120 (29.27)	43 (10.49)	RJD	74 (18.05)	53 (12.93)
67	RJD	382 (75.2)	JD(U)	44 (8.66)	338 (66.54)	?AIFB	13 (2.56)	69 (13.58)
68	RJD	159 (38.31)	LJP	87 (20.96)	72 (17.35)	JD(U)	81 (19.52)	88 (21.2)
69	RJD	140 (34.06)	LJP	116 (28.22)	24 (5.84)	JD(U)	71 (17.27)	84 (20.44)
70	RJD	269 (63.29)	LJP	55 (12.94)	214 (50.35)	JD(U)	12 (2.82)	89 (20.94)
71	RJD	291 (71.85)	JD(U)	46 (11.36)	245 (60.49)	LJP	13 (3.21)	55 (13.58)
71A	RJD	234 (63.07)	JD(U)	43 (11.59)	191 (51.48)	LJP	39 (10.51)	55 (14.82)
72	LJP	178 (42.08)	JD(U)	75 (17.73)	103 (24.35)	RJD	42 (9.93)	128 (30.26)
73	LJP	170 (37.69)	JD(U)	84 (18.63)	86 (19.06)	RJD	81 (17.96)	116 (25.72)

Contd....

Socio-Economic Amenities - Rural

Access to Education Facilities

Particulars	Number of Villages (% of Population)				
	Available	Not Available	If Not Available (Distance of Nearest Facility)		
			A	B	C
Govt. Primary School	136 (100)	6 (0)	2 (0)	3 (0)	0 (0)
Private Primary School	33 (34)	109 (66)	0 (0)	0 (0)	0 (0)
Govt. Middle School	96 (88)	46 (12)	19 (4)	24 (7)	0 (0)
Private Middle School	10 (11)	132 (89)	0 (0)	0 (0)	0 (0)
Govt. Secondary School	12 (24)	130 (76)	0 (0)	5 (3)	123 (71)
Private Secondary School	2 (5)	140 (95)	0 (0)	0 (0)	1 (0)
Govt. Senior Secondary School	1 (1)	141 (99)	0 (0)	18 (13)	121 (84)
Private Senior Secondary School	1 (1)	141 (99)	0 (0)	0 (0)	1 (0)
Govt. Arts and Science Degree College	1 (6)	141 (94)	0 (0)	0 (0)	74 (50)
Private Arts and Science Degree College	1 (1)	141 (99)	0 (0)	0 (0)	66 (43)
Govt. Engineering College	0 (0)	142 (100)	0 (0)	0 (0)	0 (0)
Private Engineering College	0 (0)	142 (100)	1 (1)	4 (3)	137 (96)
Govt. Medicine College	0 (0)	142 (100)	0 (0)	5 (3)	137 (97)
Private Medicine College	0 (0)	142 (100)	0 (0)	0 (0)	0 (0)
Govt. Management Institute	0 (0)	142 (100)	0 (0)	0 (0)	0 (0)
Private Management Institute	0 (0)	142 (100)	0 (0)	1 (1)	141 (99)
Govt. Polytechnic	7 (19)	135 (81)	0 (0)	1 (1)	134 (80)
Private Polytechnic	0 (0)	142 (100)	0 (0)	0 (0)	0 (0)
Govt. Vocational Training School/ITI	1 (3)	141 (97)	0 (0)	0 (0)	82 (57)
Private Vocational Training School/ITI	0 (0)	142 (100)	0 (0)	2 (1)	57 (39)
Govt. Non Formal Training Centre	3 (12)	139 (88)	2 (1)	4 (2)	130 (80)
Private Non Formal Training Centre	0 (0)	142 (100)	0 (0)	0 (0)	3 (5)
Govt. School For Disabled	0 (0)	142 (100)	0 (0)	3 (2)	137 (96)
Private School For Disabled	0 (0)	142 (100)	0 (0)	0 (0)	2 (2)
Government Others	5 (13)	137 (87)	0 (0)	1 (0)	2 (3)
Private Others	3 (4)	139 (96)	1 (3)	0 (0)	1 (0)

Note : Distance A : Less than 5 km; B : Between 5-10 km; C : 10+ km.; Source : Data Analysis is based on 2011 Census.

DISCLAIMER

The Terms of Use and Disclaimer of Datanet India Private Limited (hereinafter referred to as "Datanet") for use of this analysis report of **Gaighat Assembly Constituency (Gaighat Vidhan Sabha)** :-

1. **Assembly Factbook™** is a Registered Trade Mark owned by Datanet.
2. All the maps are sketched and graphical representation only and have not been drawn to the scale and also not to represent the actual geographical area or boundary of the unit.
3. The data for the aforesaid analysis is based on authentic sources and has been culled from the various publications of Census, CSO and NSSO for district and block level data, various central and state government departments, Central & State Elections Commissions and the concerned Returning Officers' releases, Electoral Rolls, Election results and allied publications, internal assessment, surveys, estimates and analysis. Therefore, certain adjustment of data at micro level may have been done to arrive closer to the macro data.
4. Data have been provided on an "As Is" and "As AVAILABLE" basis
5. The colours shown in the maps or diagram and charts of a particular party, alliance or AC are indicative and do not represent them.
6. This publication which includes maps, sheets, graphs and data would be the property under copyright of Datanet only. The user may use these for its internal study, analysis and research purposes. It's public display, re-selling or any commercial uses by the user are not allowed.
7. Datanet has taken due care and caution in compilation and processing of data and allied information, but does not guarantee the accuracy, adequacy or completeness of any information/analysis and will be not responsible for any errors or omissions or for the results obtained from the use of such information/analysis.
8. All the contents for the publication have been culled from various authentic sources and Datanet reasonably believes such sources to be reliable, but does not make any representations, express or implied as to the accuracy or fitness of use of such information. The information or contents of the information/analysis do not constitute advice and should not be relied upon in making (or refraining from making) any decision. Any reliance placed upon the information provided by Datanet is the sole responsibility and strictly at the user's risk.
9. In no event will Datanet be liable for any damages (including, without limitation, damages for loss of business projects, or loss of profits) arising in contract, tort or otherwise from the use of or inability to use any of its contents, or from any action taken (or refrained from being taken) as a result of using the analysis or any of its contents. Datanet its directors, owners, editors, officials, employees, distributor and agents or any associate will not be liable for any errors in the information contained or any consequences arising from the use of the contents of the provided information/analysis.
10. If any provision of these terms and conditions is held invalid or illegal or unenforceable for any reason by any court of competent jurisdiction, such provision shall be severed and the remainder of provisions of the terms and conditions shall continue in full force and effect as if the Term of Use had been executed with the invalid, illegal or unenforceable provision eliminated.
11. If there are any discrepancies in the information provided, please bring it to attention of Datanet for suitable rectification measures.

**Buy Online This Complete Book At
Datanet India eBooks Store**

www.indiastatpublications.com

or go directly at

[http://www.indiastatpublications.com/
Assembly_factbook/Bihar/Muzaffarpur/ Gaighat](http://www.indiastatpublications.com/Assembly_factbook/Bihar/Muzaffarpur/Gaighat)

 **india**stat**elections**

ISBN : 978-93-5313-079-4

