



Bihar

# Assembly Factbook™

Biharsharif Assembly Constituency



Key Electoral Data of Biharsharif  
Assembly Constituency (Vidhan Sabha)

Bihar

# Assembly Factbook™

Biharsharif Assembly Constituency



Biharsharif Vidhan Sabha

## **Editor & Director**

Dr. R.K. Thukral

## **Research Editor**

Dr. Shafeeq Rahman

## **Compiled, Researched and Published by Datanet India Pvt. Ltd.**

D-100, 1st Floor,

Okhla Industrial Area, Phase-I,  
New Delhi- 110020.

Ph.: 91-11- 43580781-84

Email : support@indiastatpublications.com

Website : www.indiastatelections.com

## **Online Book Store :**

www.indiastatpublications.com

**Report No. :** AFB/BR-172-0125

**ISBN :** 978-93-5313-059-6

**First Edition :** January, 2018

**Eighth Updated Edition :** January, 2025

**Price :** Rs. 11500/-

US\$ 310

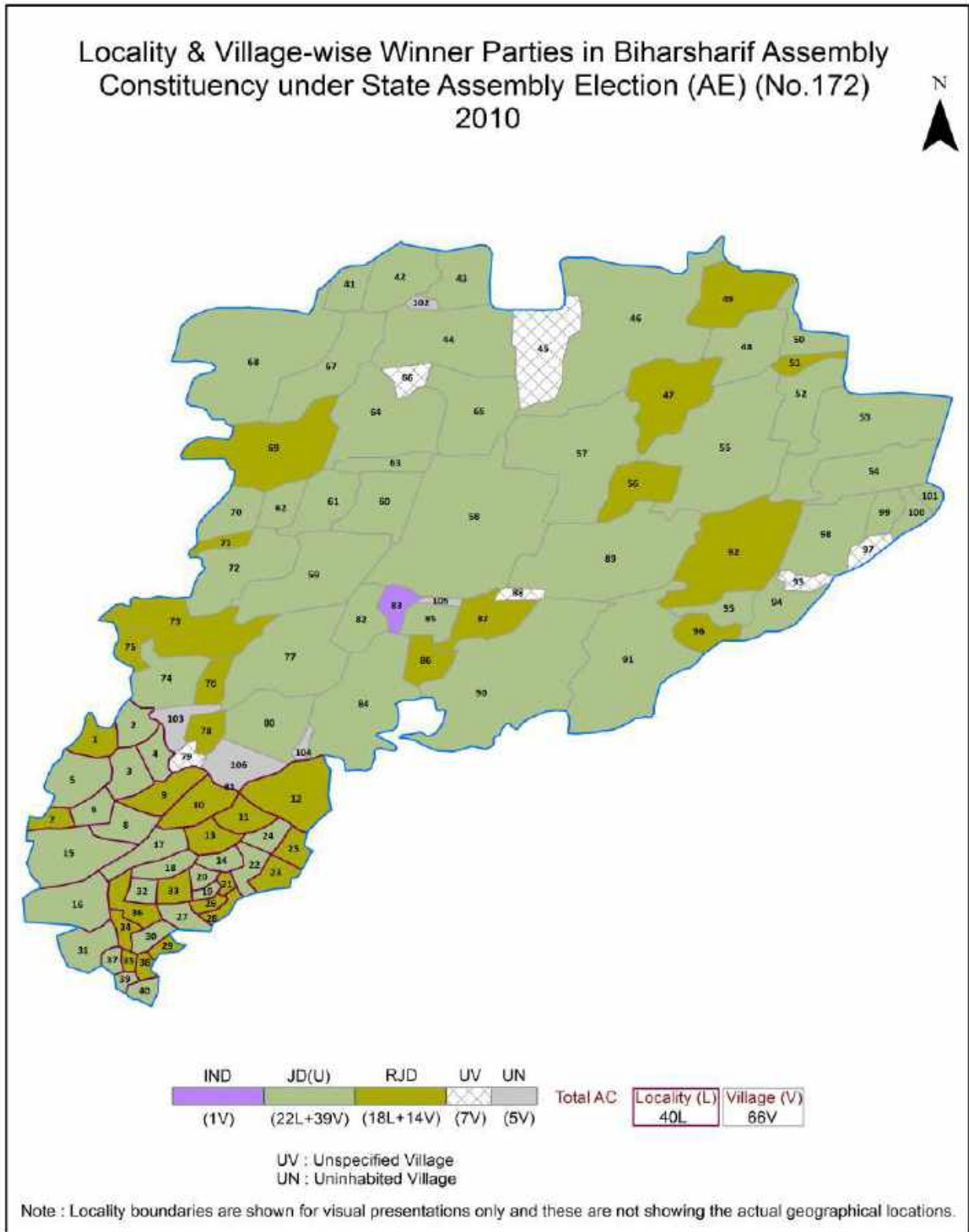
**© Datanet India Pvt. Ltd.**

All rights reserved. No part of this book may be reproduced, stored in a retrieval system or transmitted in any form or by any means, mechanical photocopying, photographing, scanning, recording or otherwise without the prior written permission of the publisher. Please refer to Disclaimer at page no. 251 for the use of this publication.

Printed in India

No.	Particulars	Page No.
	<b>Introduction</b>	
1	Assembly Constituency - (Vidhan Sabha) at a Glance   Features of Assembly as per Delimitation Commission of India (2008)	1-2
	<b>Location and Political Maps</b>	
2	Location Map   Boundaries of Assembly Constituency - (Vidhan Sabha) in District   Boundaries of Assembly Constituency under Parliamentary Constituency - (Lok Sabha)   Locality & Village-wise Winner Parties- 2024, 2019, 2015, 2014, 2010 and 2009	3-11
	<b>Administrative Setup (2011)</b>	
3	District   Sub-district   Towns   Villages   Inhabited Villages   Uninhabited Villages   Village Panchayat   Intermediate Panchayat	11-16
	<b>Demographics (2011)</b>	
4	Population   Households   Rural/Urban Population   Villages by Population Size   Sex Ratio (Total & 0-6 Years)   Religious Population   Social Population   Literacy Rate	17-18
	<b>Electoral Features</b>	
5	Important Dates of Last Elections Held   Electors by Gender   Service Electors   Voters   Voters Turnout   Polling Stations & Average Number of Electors per Polling Station   Electors by Age Group   Present Elected Representatives	19-24
	<b>Historical Summary Election Results</b>	
6	Vote Share of Major Parties   Winning Margin (Number & Percentage   Polarity of Parties   Summary Result of Assembly Segment of Parliamentary Elections 2024, 2019, 2014, 2009, 2004 and 1999   Summary Result of Assembly Elections 2020, 2015, 2010, 2005 (Oct), 2005 (Feb), 2000, 1995, 1990, 1985, 1980, 1977, 1972, 1969, 1967, 1962, 1957 and 1952	25-55
	<b>Polling Station Level Election Results</b>	
7	Name and Number of Polling Station 2024, 2019, 2015, 2014, 2010 and 2009   Polling Station-wise Electors, Voters & Voters Turnout 2024, 2019, 2015, 2014, 2010 and 2009   Polling Station wise Elections Results 2024, 2019, 2015, 2014, 2010 and 2009	56-230
	<b>Share of Assembly Constituency</b>	
8	Share of Assembly Constituency - (Vidhan Sabha) in State, District and Parliamentary Constituency - (Lok Sabha)	231
	<b>Socio-Economic Amenities (2011)</b>	
9	Access to Administrative Units   Agricultural, Manufacturing and Industrial Commodities   Demographic Indicators   Education   Health & Manpower   Drinking Water Supply   Sanitation   Entertainment and Recreations Infrastructure   Power   Food Allocation Distribution and Marketing of Agriculture Commodities Infrastructure   Transport and Road Infrastructure   Communication   Banking and Financial Services   Land Use   Irrigation Source	233-247
10	<b>Abbreviation &amp; Sources</b>	248-250
11	<b>Disclaimer</b>	251

Location & Political Map



## Administrative Setup

### List of Village Panchayat & Intermediate Panchayat (Block) Name - 2011

Village Name	Village Panchayat Name	Intermediate Panchayat Name
Abdulhai Chak	Hawanpura	Rahui
Amarpur	Patasang	Rahui
Amba	Amba	Rahui
Anantpur	Peshaur	Rahui
Barandi	Barandi	Rahui
Basak Saidi	Hawanpura	Rahui
Bazidpur	Supasang	Rahui
Bhandari	Hawanpura	Rahui
Bhangan Bigha	Paithna	Rahui
Bhinda	Sonsa	Rahui
Chandaura	Supasang	Rahui
Dehra	Patasang	Rahui
Dhamauli	Paithna	Rahui
Dosut	Dosut	Rahui
Gaibi	Itasan Bhadwa	Rahui
Gobaria	Patasang	Rahui
Habanpura	Hawanpura	Rahui
Hurrahia	Itasan Bhadwa	Rahui
Hussainpur	Peshaur	Rahui
Imamganj	Imamganj	Rahui
Indwas	Hawanpura	Rahui
Itasan Bhadwa	Itasan Bhadwa	Rahui
Kadi Bigha	Patasang	Rahui
Kaiampur Makhdumpur	Peshaur	Rahui
Khaje Sarai	Imamganj	Rahui
Kumardih	Susandi	Rahui
Kutubpura	Supasang	Rahui
Mai farida	Mai Farida	Rahui
Majidpur	Susandi	Rahui

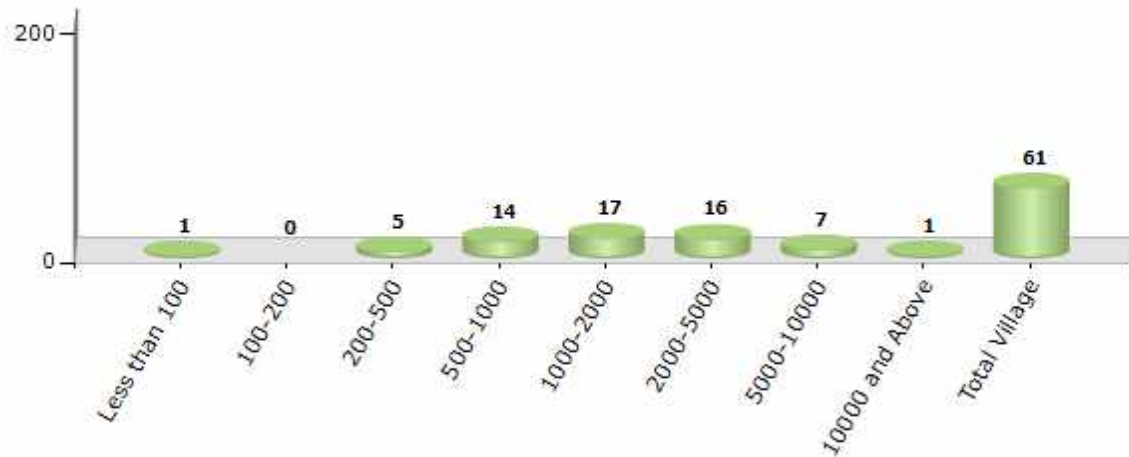
Contd....

## Demographics

### Number of Villages by Population Size - 2011

Less than 100	100-200	200-500	500-1000	1000-2000	2000-5000	5000-10000	10000 and Above	Total Village
1	0	5	14	17	16	7	1	61

Number of Villages by Population Size - 2011



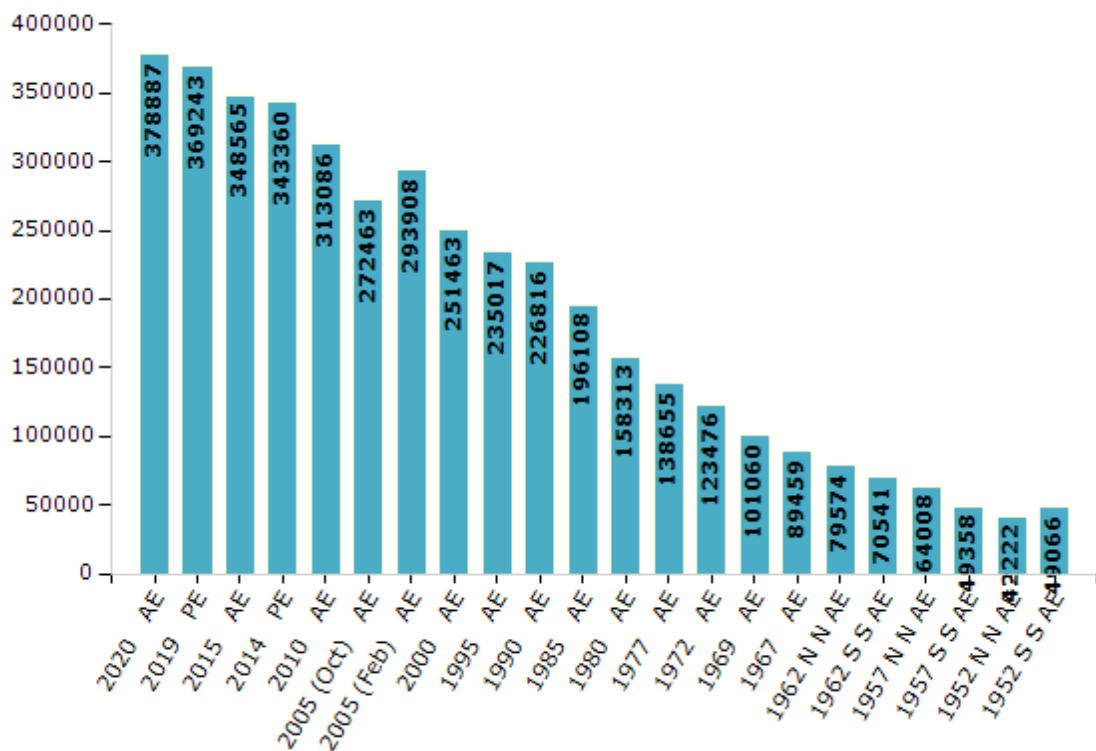
## Electoral Features

### Electors by Male & Female

Year	Male	Female	Others	Total
2020 AE	200170	178695	22	378887
2019 PE	196569	172652	22	369243
2015 AE	186069	162471	25	348565
2014 PE	183009	160351	0	343360
2010 AE	169637	143449	0	313086
2009 PE	-	-	-	-
2005 (Oct) AE	145673	126790	-	272463
2005 (Feb) AE	155767	138141	-	293908
2004 PE	-	-	-	-
2000 AE	134505	116958	-	251463
1999 PE	-	-	-	-
1995 AE	125337	109680	-	235017
1990 AE	118318	108498	-	226816

Year	Male	Female	Others	Total
1985 AE	101558	94550	-	196108
1980 AE	81605	76708	-	158313
1977 AE	70548	68107	-	138655
1972 AE	67652	55824	-	123476
1969 AE	54227	46833	-	101060
1967 AE	-	-	-	89459
1962 (N) AE	-	-	-	79574
1962 (S) AE	-	-	-	70541
1957 (N) AE	-	-	-	64008
1957 (S) AE	-	-	-	49358
1952 (N) AE	-	-	-	42222
1952 (S) AE	-	-	-	49066

Number of Electors



Note : AE : Assembly Election, PE : Assembly Segment of Parliamentary Election

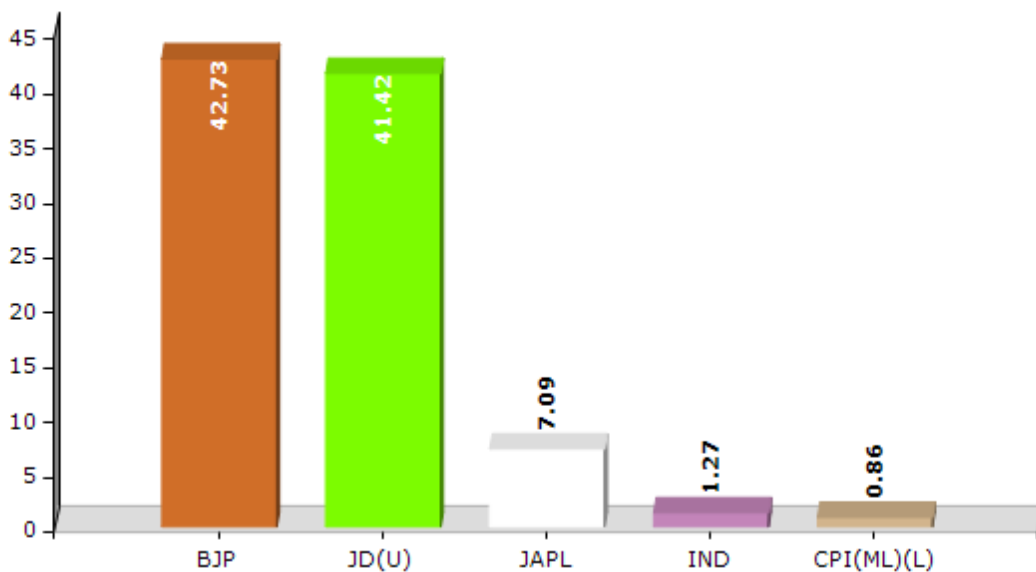


## Historical Summary Election Results

### Summary Result of Assembly Election - 2015

Candidate Name	Party	Votes	Votes %
Dr.Sunil Kumar	BJP	76201	42.73
Mohammad Asghar Shamim	JD(U)	73861	41.42
Afrin Sultana	JAPL	12635	7.09
Md. Surkhab Alam	IND	2259	1.27
Arun Yadav	CPI(ML)(L)	1526	0.86
Arun Deo Kumar	IND	1453	0.81
Ranvijay Singh	BSP	1238	0.69
Surendra Prasad	IND	1143	0.64
Mahesh Prasad Singh	IND	933	0.52
Manoj Kumar	IND	723	0.41
Arun Kumar	IND	454	0.25
Kaushal Kumar Kaushalendra Sinha Alias Bharat Manas	IND	408	0.23
Avinash Kumar	IND	302	0.17
	NOTA	5191	2.91

Votes Percentage of Top Parties - 2015



## Polling Station Level Election Results

### Number and Name of Polling Stations (PS) (2015)

Number of Polling Stations	Name of Polling Stations	Number of Polling Stations	Name of Polling Stations
1	Prathmik Vidyalay Bangauriya	22	Panchayat Bhavan Mai
2	Prathmik Vidyalay Vena	23	Prathmik Vidyalay Vasakasaidi
3	Prathmik Vidyalay Banavaripur Mora	24	Madhya Vidyalay Saidalli
4	Panchayat Bhavan Dosut	25	Madhya Vidyalay Kathauli Naya Bhavan Pachimi Bhag
5	Madhya Vidyalay Dosut Pachimi Bhag	26	Madhya Vidyalay Kathauli Naya Bhavan Purbi Bhag
6	Madhya Vidyalay Dosut Uttari Bhag	27	Madhya Vidyalay Kathauli Purana Bhavan
7	Prathmik Vidyalay Devavigaha	28	Prathmik Vidyalay Mohiuddinpur
8	Prathmik Vidyalay Paithana Dakshini Bhag	29	Madhay Vidyalay Hawanpura Dayan Bhag
9	Prathmik Vidyalay Paithana Uttari Bhag	30	Madhya Vidyalay Havanapura Bayan Bhag
10	Prathmik Vidyalay Paithana Dakshini Bhag	31	Utakramit Madhya Vidyalay Indavas
11	Madhya Vidyalay Dhamauli Dih	32	Utkramit Madhay Vidyalay Abduli Chak
12	Prathmik Vidyalay Bhaganavigaha	33	Utkramit Madhay Vidyalay Bhandari
13	Prathmik Vidyalay Murgiyachak Purbi Bhag	34	Prathmik Vidyalay Ramapur
14	Prathmik Vidyalay Murgiyachak Uttari Bhag	35	Prathmik Vidyalay Salamabad
15	Uchcha Vidyalay Murgiyachak Dakshini Bhag	36	Prathmik Vidyalay Mustafapur
16	Uchcha Vidyalay Murgiyachak Uttari Bhag	37	Kisan Bhavan Nijay
17	Prathmik Vidyalay Ganjapar	38	Uchcha Vidyalay Sonasa
18	Madhya Vidyalay Chandaura	39	Madhya Vidyalay Sonasa (Dayan Bhag)
19	Prathmik Vidyalay Kutubarapura	40	Madhay Vidhyalay Sonasa (Bayan Bhag)
20	Madhya Vidyalay Salemapur	41	Madhya Vidyalay Sosandi Purwi Bhag
21	Prathmik Vidyalay Vikramapur	42	Madhya Vidyalay Sosandi Pashchim Bhag

Contd....

## Polling Station Level Election Results

### Polling Station-wise Votes Secured by Overall Top Five Parties in Biharsharif Assembly in Assembly Election (AE) under Nalanda Parliamentary Constituency in Bihar (2015)

Number of Polling Station	Winner - Dr.Sunil Kumar (BJP)	Runner-up - Mohammad Asghar Shamim (JD(U))	3rd - Afrin Sultana (JAPL)	4th - Md. Surkhab Alam (IND)	5th - Arun Yadav (CPI(ML) (L))	NOTA	Other	Total Votes Secured
36	63	224	62	3	0	10	12	374
37	61	258	5	2	0	9	7	342
38	153	447	19	13	4	31	11	678
39	116	219	1	6	5	25	24	396
40	147	330	8	6	7	56	25	579
41	194	310	6	6	5	44	56	621
42	247	302	20	15	2	41	21	648
43	121	98	62	7	5	11	22	326
44	84	148	5	5	1	30	13	286
45	93	264	50	5	6	17	21	456
46	85	220	1	4	3	8	16	337
47	179	259	4	10	9	17	16	494
48	73	97	0	6	0	13	13	202
49	49	199	235	4	5	20	30	542
50	236	118	3	16	5	18	16	412
51	106	181	2	5	3	9	15	321
52	293	204	117	23	10	31	40	718
53	67	187	1	0	3	3	0	261
54	89	306	0	1	1	13	8	418
55	325	299	11	19	12	46	39	751
56	295	307	7	2	3	14	30	658
57	249	271	42	10	5	37	40	654
58	144	364	36	6	3	51	40	644
59	302	242	18	15	6	28	34	645
60	75	418	1	1	4	16	9	524
61	302	197	8	3	3	25	21	559
62	288	326	5	10	10	8	19	666
63	124	170	4	2	5	14	7	326
64	361	304	89	23	13	48	57	895
65	92	283	10	8	4	36	21	454
66	224	162	3	5	6	11	13	424
67	355	110	15	17	7	32	67	603
68	85	134	29	2	2	9	30	291
69	495	130	10	20	12	13	55	735
70	380	186	177	16	9	29	59	856

Contd....

## Polling Station Level Election Results

### Winner, Runner-up and 3rd Party Position & Winning Margin According to Polling Stations in Biharsharif Assembly in Assembly Election (AE) under Nalanda Parliamentary Constituency in Bihar (2015)

Polling Station Number	Winner Party	Winner Votes (%)	Runner-up Party	Runner-up Votes (%)	Winning Margin Votes (%)	Third Party	Third Party Votes (%)	Other Votes (%)
71	JD(U)	243 (49.09)	JAPL	198 (40)	45 (9.09)	IND (MK)	11 (2.22)	43 (8.69)
72	BJP	449 (51.26)	JD(U)	158 (18.04)	291 (33.22)	JAPL	68 (7.76)	201 (22.95)
73	BJP	400 (47.45)	JD(U)	172 (20.4)	228 (27.05)	JAPL	77 (9.13)	194 (23.01)
74	JD(U)	271 (40.75)	BJP	241 (36.24)	30 (4.51)	JAPL	72 (10.83)	81 (12.18)
75	BJP	302 (61.38)	JD(U)	56 (11.38)	246 (50)	JAPL	50 (10.16)	84 (17.07)
76	BJP	497 (69.9)	JD(U)	119 (16.74)	378 (53.16)	IND (MSA)	19 (2.67)	76 (10.69)
77	JD(U)	320 (54.15)	BJP	162 (27.41)	158 (26.74)	JAPL	20 (3.38)	89 (15.06)
78	BJP	331 (51.64)	JD(U)	244 (38.07)	87 (13.57)	IND (SP)	10 (1.56)	56 (8.74)
79	JD(U)	539 (63.34)	BJP	175 (20.56)	364 (42.78)	JAPL	66 (7.76)	71 (8.34)
80	BJP	340 (53.8)	JD(U)	193 (30.54)	147 (23.26)	IND (MSA)	24 (3.8)	75 (11.87)
81	BJP	432 (55.74)	JD(U)	269 (34.71)	163 (21.03)	IND (MSA)	16 (2.06)	58 (7.48)
82	JD(U)	427 (60.65)	BJP	136 (19.32)	291 (41.33)	IND (MSA)	16 (2.27)	125 (17.76)
83	BJP	361 (48.72)	JD(U)	261 (35.22)	100 (13.5)	IND (MSA)	21 (2.83)	98 (13.23)
84	JD(U)	308 (49.44)	BJP	214 (34.35)	94 (15.09)	JAPL	45 (7.22)	56 (8.99)
85	JD(U)	452 (63.39)	BJP	174 (24.4)	278 (38.99)	JAPL	41 (5.75)	46 (6.45)
86	JD(U)	497 (63.8)	BJP	187 (24.01)	310 (39.79)	IND (MSA)	13 (1.67)	82 (10.53)
87	BJP	298 (51.2)	JD(U)	195 (33.51)	103 (17.69)	IND (MSA)	22 (3.78)	67 (11.51)
88	JD(U)	340 (67.73)	BJP	109 (21.71)	231 (46.02)	BSP	7 (1.39)	46 (9.16)
89	JAPL	141 (35.79)	JD(U)	127 (32.23)	14 (3.56)	BJP	62 (15.74)	64 (16.24)
90	JD(U)	296 (55.22)	BJP	206 (38.43)	90 (16.79)	BSP	15 (2.8)	19 (3.54)
91	JD(U)	311 (68.05)	BJP	104 (22.76)	207 (45.29)	CPI(ML)(L)	5 (1.09)	37 (8.1)
91A	JD(U)	178 (46.6)	BJP	162 (42.41)	16 (4.19)	BSP	8 (2.09)	34 (8.9)
92	JD(U)	269 (47.28)	BJP	224 (39.37)	45 (7.91)	BSP	12 (2.11)	64 (11.25)
93	JD(U)	513 (86.22)	BJP	46 (7.73)	467 (78.49)	IND (SP)	6 (1.01)	30 (5.04)
94	JD(U)	265 (45.38)	BJP	210 (35.96)	55 (9.42)	JAPL	39 (6.68)	70 (11.99)
95	JD(U)	449 (60.27)	BJP	249 (33.42)	200 (26.85)	BSP	10 (1.34)	37 (4.97)
96	JD(U)	342 (78.98)	BJP	86 (19.86)	256 (59.12)	IND (SP)	1 (0.23)	4 (0.92)
97	JD(U)	261 (84.74)	JAPL	5 (1.62)	256 (83.12)	BJP	4 (1.3)	38 (12.34)
98	JD(U)	378 (67.38)	BJP	143 (25.49)	235 (41.89)	IND (MSA)	8 (1.43)	32 (5.7)
99	JD(U)	416 (77.18)	BJP	84 (15.58)	332 (61.6)	JAPL	6 (1.11)	33 (6.12)
100	JD(U)	248 (61.39)	BJP	103 (25.5)	145 (35.89)	IND (MSA)	6 (1.49)	47 (11.63)
101	JD(U)	289 (67.21)	BJP	78 (18.14)	211 (49.07)	CPI(ML)(L)	6 (1.4)	57 (13.26)
102	JD(U)	281 (55.31)	BJP	142 (27.95)	139 (27.36)	IND (MSA)	10 (1.97)	75 (14.76)
103	JD(U)	232 (44.62)	BJP	190 (36.54)	42 (8.08)	CPI(ML)(L)	11 (2.12)	87 (16.73)
104	BJP	204 (39.23)	JD(U)	196 (37.69)	8 (1.54)	IND (MSA)	14 (2.69)	106 (20.38)

Contd....

## Socio-Economic Amenities - Rural

### Access to Education Facilities

Particulars	Number of Villages (% of Population)				
	Available	Not Available	If Not Available (Distance of Nearest Facility)		
			A	B	C
Govt. Primary School	56 (98)	5 (2)	2 (1)	1 (0)	0 (0)
Private Primary School	12 (24)	49 (76)	0 (0)	0 (0)	0 (0)
Govt. Middle School	36 (84)	25 (16)	19 (12)	5 (3)	0 (0)
Private Middle School	4 (10)	57 (90)	0 (0)	0 (0)	0 (0)
Govt. Secondary School	8 (19)	53 (81)	3 (2)	5 (7)	39 (63)
Private Secondary School	2 (7)	59 (93)	0 (0)	0 (0)	5 (5)
Govt. Senior Secondary School	5 (11)	56 (89)	19 (26)	37 (63)	0 (0)
Private Senior Secondary School	1 (2)	60 (98)	0 (0)	0 (0)	0 (0)
Govt. Arts and Science Degree College	0 (0)	61 (100)	0 (0)	13 (20)	48 (80)
Private Arts and Science Degree College	0 (0)	61 (100)	0 (0)	0 (0)	0 (0)
Govt. Engineering College	0 (0)	61 (100)	0 (0)	0 (0)	0 (0)
Private Engineering College	0 (0)	61 (100)	0 (0)	0 (0)	61 (100)
Govt. Medicine College	0 (0)	61 (100)	0 (0)	0 (0)	61 (100)
Private Medicine College	0 (0)	61 (100)	0 (0)	0 (0)	0 (0)
Govt. Management Institute	0 (0)	61 (100)	0 (0)	0 (0)	61 (100)
Private Management Institute	0 (0)	61 (100)	0 (0)	0 (0)	0 (0)
Govt. Polytechnic	0 (0)	61 (100)	0 (0)	0 (0)	61 (100)
Private Polytechnic	0 (0)	61 (100)	0 (0)	0 (0)	0 (0)
Govt. Vocational Training School/ITI	1 (1)	60 (99)	0 (0)	0 (0)	60 (99)
Private Vocational Training School/ITI	0 (0)	61 (100)	0 (0)	0 (0)	0 (0)
Govt. Non Formal Training Centre	0 (0)	61 (100)	0 (0)	0 (0)	61 (100)
Private Non Formal Training Centre	0 (0)	61 (100)	0 (0)	0 (0)	0 (0)
Govt. School For Disabled	0 (0)	61 (100)	0 (0)	0 (0)	61 (100)
Private School For Disabled	0 (0)	61 (100)	0 (0)	0 (0)	0 (0)
Government Others	0 (0)	61 (100)	0 (0)	0 (0)	61 (100)
Private Others	0 (0)	61 (100)	0 (0)	0 (0)	0 (0)

Note : Distance A : Less than 5 km; B : Between 5-10 km; C : 10+ km.; Source : Data Analysis is based on 2011 Census.

## DISCLAIMER

The Terms of Use and Disclaimer of Datanet India Private Limited (hereinafter referred to as "Datanet") for use of this analysis report of **Biharsharif Assembly Constituency (Biharsharif Vidhan Sabha)** :-

1. **Assembly Factbook™** is a Registered Trade Mark owned by Datanet.
2. All the maps are sketched and graphical representation only and have not been drawn to the scale and also not to represent the actual geographical area or boundary of the unit.
3. The data for the aforesaid analysis is based on authentic sources and has been culled from the various publications of Census, CSO and NSSO for district and block level data, various central and state government departments, Central & State Elections Commissions and the concerned Returning Officers' releases, Electoral Rolls, Election results and allied publications, internal assessment, surveys, estimates and analysis. Therefore, certain adjustment of data at micro level may have been done to arrive closer to the macro data.
4. Data have been provided on an "As Is" and "As AVAILABLE" basis
5. The colours shown in the maps or diagram and charts of a particular party, alliance or AC are indicative and do not represent them.
6. This publication which includes maps, sheets, graphs and data would be the property under copyright of Datanet only. The user may use these for its internal study, analysis and research purposes. It's public display, re-selling or any commercial uses by the user are not allowed.
7. Datanet has taken due care and caution in compilation and processing of data and allied information, but does not guarantee the accuracy, adequacy or completeness of any information/analysis and will be not responsible for any errors or omissions or for the results obtained from the use of such information/analysis.
8. All the contents for the publication have been culled from various authentic sources and Datanet reasonably believes such sources to be reliable, but does not make any representations, express or implied as to the accuracy or fitness of use of such information. The information or contents of the information/analysis do not constitute advice and should not be relied upon in making (or refraining from making) any decision. Any reliance placed upon the information provided by Datanet is the sole responsibility and strictly at the user's risk.
9. In no event will Datanet be liable for any damages (including, without limitation, damages for loss of business projects, or loss of profits) arising in contract, tort or otherwise from the use of or inability to use any of its contents, or from any action taken (or refrained from being taken) as a result of using the analysis or any of its contents. Datanet its directors, owners, editors, officials, employees, distributor and agents or any associate will not be liable for any errors in the information contained or any consequences arising from the use of the contents of the provided information/analysis.
10. If any provision of these terms and conditions is held invalid or illegal or unenforceable for any reason by any court of competent jurisdiction, such provision shall be severed and the remainder of provisions of the terms and conditions shall continue in full force and effect as if the Term of Use had been executed with the invalid, illegal or unenforceable provision eliminated.
11. If there are any discrepancies in the information provided, please bring it to attention of Datanet for suitable rectification measures.

**Buy Online This Complete Book At  
Datanet India eBooks Store**

[www.indiastatpublications.com](http://www.indiastatpublications.com)

or go directly at

[http://www.indiastatpublications.com/  
Assembly\\_factbook/Bihar/Nalanda/ Biharsharif](http://www.indiastatpublications.com/Assembly_factbook/Bihar/Nalanda/Biharsharif)

 **india**stat**elections**

ISBN: 978-93-5313-059-6

