



Bihar

Assembly Factbook™

Harnaut Assembly Constituency



Key Electoral Data of Harnaut
Assembly Constituency (Vidhan Sabha)

Bihar

Assembly Factbook™

Harnaut Assembly Constituency



Harnaut Vidhan Sabha

Editor & Director

Dr. R.K. Thukral

Research Editor

Dr. Shafeeq Rahman

Compiled, Researched and Published by Datanet India Pvt. Ltd.

D-100, 1st Floor,

Okhla Industrial Area, Phase-I,
New Delhi- 110020.

Ph.: 91-11- 43580781-84

Email : support@indiastatpublications.com

Website : www.indiastatelections.com

Online Book Store :

www.indiastatpublications.com

Report No. : AFB/BR-177-0125

ISBN : 978-93-5313-088-6

First Edition : January, 2018

Eighth Updated Edition : January, 2025

Price : Rs. 11500/-

US\$ 310

© Datanet India Pvt. Ltd.

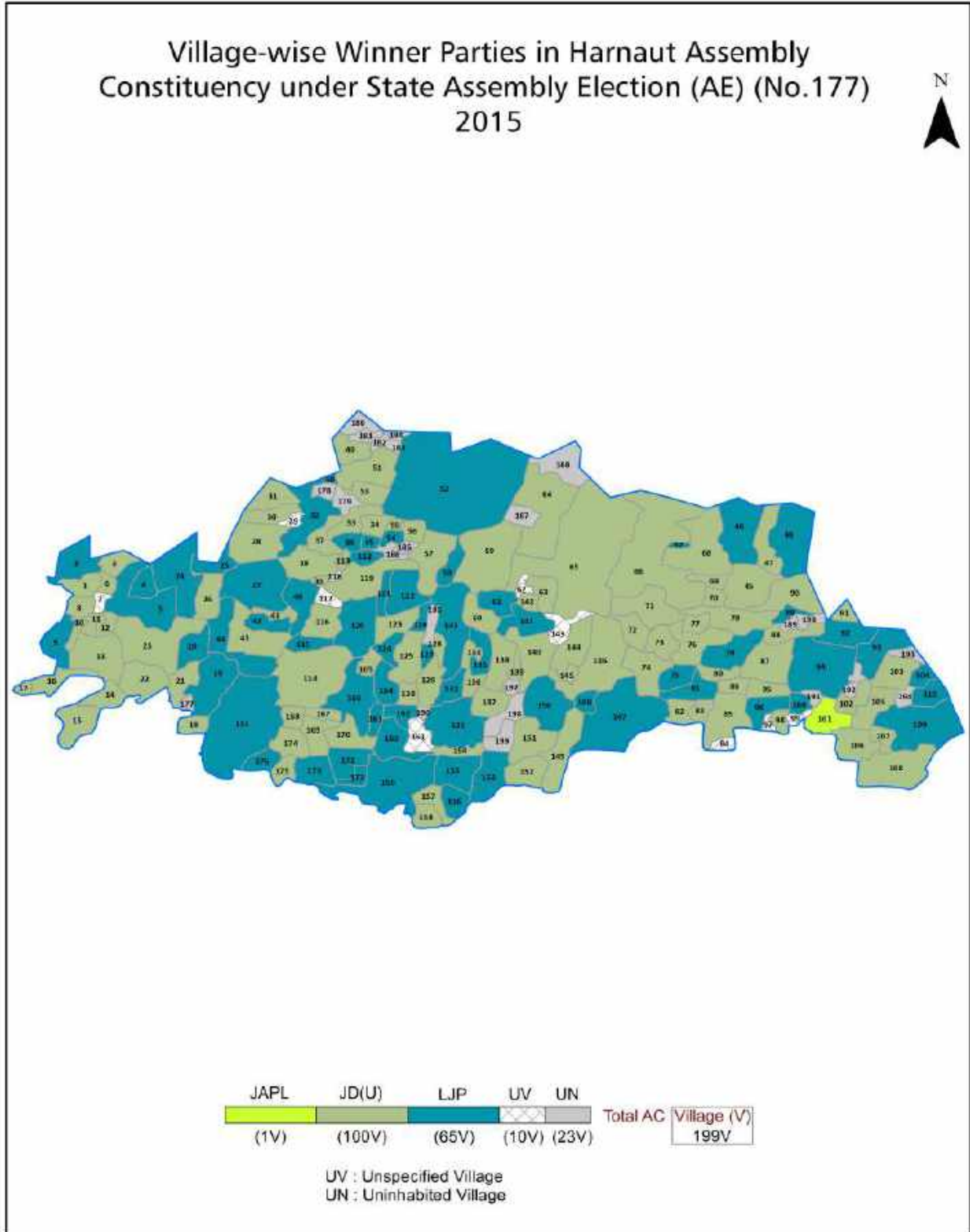
All rights reserved. No part of this book may be reproduced, stored in a retrieval system or transmitted in any form or by any means, mechanical photocopying, photographing, scanning, recording or otherwise without the prior written permission of the publisher. Please refer to Disclaimer at page no. 272 for the use of this publication.

Printed in India

Contents

No.	Particulars	Page No.
	Introduction	
1	Assembly Constituency - (Vidhan Sabha) at a Glance Features of Assembly as per Delimitation Commission of India (2008)	1-2
	Location and Political Maps	
2	Location Map Boundaries of Assembly Constituency - (Vidhan Sabha in District Boundaries of Assembly Constituency under Parliamentary Constituency - (Lok Sabha) Village-wise Winner Parties- 2024, 2020, 2019, 2015, 2014, 2010 and 2009	3-11
	Administrative Setup (2011)	
3	District Sub-district Towns Villages Inhabited Villages Uninhabited Villages Village Panchayat Intermediate Panchayat	12-22
	Demographics (2011)	
4	Population Households Rural/Urban Population Villages by Population Size Sex Ratio (Total & 0-6 Years) Religious Population Social Population Literacy Rate	23-24
	Electoral Features	
5	Important Dates of Last Elections Held Electors by Gender Service Electors Voters Voters Turnout Polling Stations & Average Number of Electors per Polling Station Electors by Age Group Present Elected Representatives	25-30
	Historical Summary Election Results	
6	Vote Share of Major Parties Winning Margin (Number & Percentage Polarity of Parties Summary Result of Assembly Segment of Parliamentary Elections 2024, 2019, 2014, 2009, 2004 and 1999 Summary Result of Assembly Elections 2020, 2015, 2010, 2005 (Oct), 2005 (Feb), 2000, 1995, 1990, 1985, 1980 and 1977	31-53
	Polling Station Level Election Results	
7	Name and Number of Polling Station 2024, 2020, 2019, 2015, 2014, 2010 and 2009 Polling Station-wise Electors, Voters & Voters Turnout 2024, 2020, 2019, 2015, 2014, 2010 and 2009 Polling Station wise Elections Results 2024, 2020, 2019, 2015, 2014, 2010 and 2009	54-251
	Share of Assembly Constituency	
8	Share of Assembly Constituency - (Vidhan Sabha) in State, District and Parliamentary Constituency - (Lok Sabha)	252
	Socio-Economic Amenities (2011)	
9	Access to Administrative Units Agricultural, Manufacturing and Industrial Commodities Demographic Indicators Education Health & Manpower Drinking Water Supply Sanitation Entertainment and Recreations Infrastructure Power Food Allocation Distribution and Marketing of Agriculture Commodities Infrastructure Transport and Road Infrastructure Communication Banking and Financial Services Land Use Irrigation Source	254-268
10	Abbreviation & Sources	269-271
11	Disclaimer	272

Location & Political Map



Administrative Setup

List of Village Panchayat & Intermediate Panchayat (Block) Name - 2011

Village Name	Village Panchayat Name	Intermediate Panchayat Name
Abu Mohammadpur	Chauria	Harnaut
Akenr	Kachiyawan	Nagar Nausa
Akhtiarpur	Ariyawan	Nagar Nausa
Alipur	Pachaura	Harnaut
Amar	Kolawan	Harnaut
Amraura	Bhagwanpur	Chandi
Araut	Araut	Chandi
Ariawan	Ariyawan	Nagar Nausa
Ashrafpur	Ariyawan	Nagar Nausa
Badarwali	Gangaura	Chandi
Badaura	Narsanda	Chandi
Bafniwan	Bafniwan	Harnaut
Bahadurpur	Sartha	Chandi
Bahadurpur	Tulshi Gardh	Chandi
Balwa	Bhuthakhar	Nagar Nausa
Bama Chak	Chero	Harnaut
Barah	Barah	Harnaut
Bardiha	Bhuthakhar	Nagar Nausa
Barhauna	Barhauna	Chandi
Basti	Basti	Harnaut
Bazidpur	Khajura	Nagar Nausa
Belchhi	Belchhi	Chandi
Beldhana	Salehpur	Chandi
Berhna	Sudhari, Kolawan	Harnaut
Bhadru	Bhuthakhar	Nagar Nausa
Bhagwanpur	Bhagwanpur	Chandi
Bheria	Sudhari	Harnaut
Bheria	Salehpur	Chandi
Bhobhi	Kachiyawan	Nagar Nausa

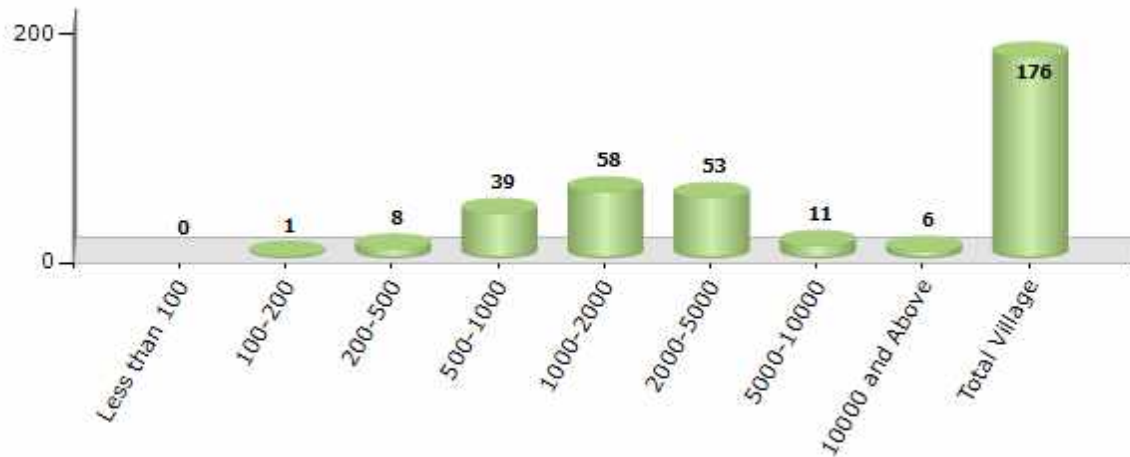
Contd....

Demographics

Number of Villages by Population Size - 2011

Less than 100	100-200	200-500	500-1000	1000-2000	2000-5000	5000-10000	10000 and Above	Total Village
0	1	8	39	58	53	11	6	176

Number of Villages by Population Size - 2011

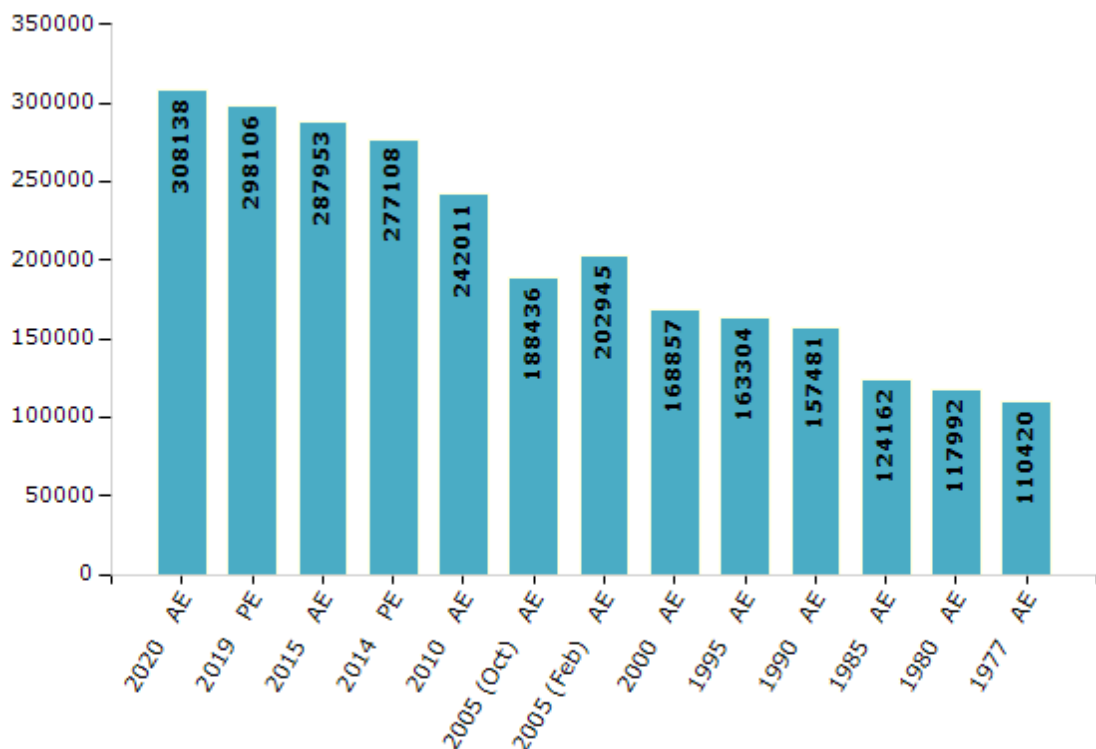


Electoral Features

Electors by Male & Female

Year	Male	Female	Others	Total	Year	Male	Female	Others	Total
2020 AE	162536	145594	8	308138	1995 AE	87302	76002	-	163304
2019 PE	158101	139996	9	298106	1990 AE	80213	77268	-	157481
2015 AE	152860	135083	10	287953	1985 AE	62782	61380	-	124162
2014 PE	147388	129720	0	277108	1980 AE	60781	57211	-	117992
2010 AE	130005	112006	0	242011	1977 AE	56628	53792	-	110420
2009 PE	-	-	-	-	1972 AE	-	-	-	-
2005 (Oct) AE	101251	87185	-	188436	1969 AE	-	-	-	-
2005 (Feb) AE	107230	95715	-	202945	1967 AE	-	-	-	-
2004 PE	-	-	-	-	1962 AE	-	-	-	-
2000 AE	91396	77461	-	168857	1957 AE	-	-	-	-
1999 PE	-	-	-	-	1952 AE	-	-	-	-

Number of Electors



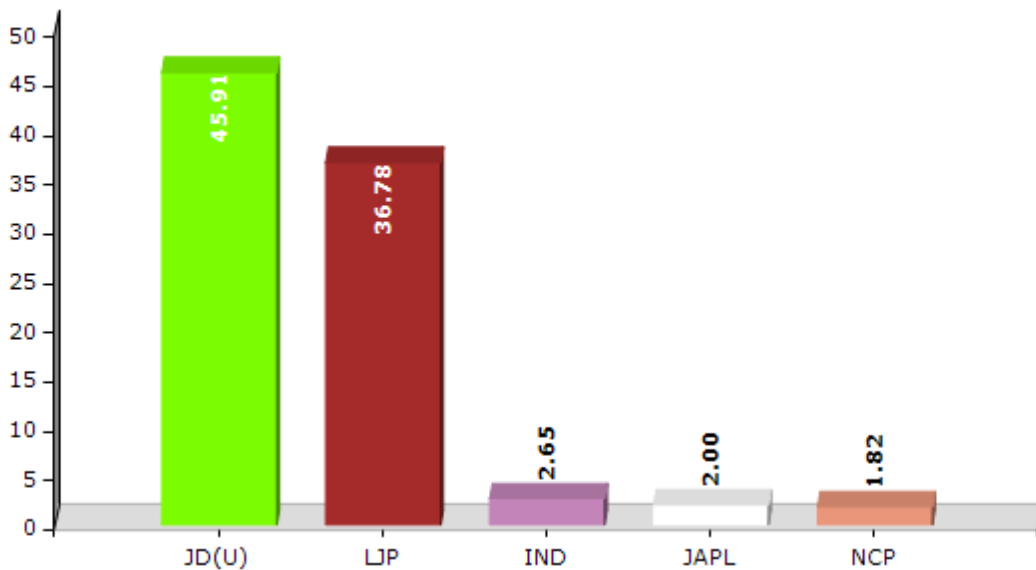
Note : AE : Assembly Election, PE : Assembly Segment of Parliamentary Election

Historical Summary Election Results

Summary Result of Assembly Election - 2015

Candidate Name	Party	Votes	Votes %
Hari Narayan Singh	JD(U)	71933	45.91
Arun Kumar	LJP	57638	36.78
Dharmendra Kumar	IND	4146	2.65
Brij Nandan Yadav	JAPL	3128	2
Neelam Kumari Singh	NCP	2858	1.82
Santosh Kumar	IND	2093	1.34
Sitaram Paswan	BSP	1959	1.25
Pintu Kumar	IND	1692	1.08
Chandra Uday Kumar	IND	1450	0.93
Amit Anand	IND	1262	0.81
Ramdas Akela	CPI(ML)(L)	1165	0.74
Munna Kumar	AAMJP	720	0.46
Arjun Prasad	IND	586	0.37
Bijay Kumar	PMS	542	0.35
	NOTA	5523	3.52

Votes Percentage of Top Parties - 2015



Polling Station Level Election Results

Number and Name of Polling Stations (PS) (2020)

Number of Polling Stations	Name of Polling Stations	Number of Polling Stations	Name of Polling Stations
1	Utkramit Madhya Vidyalay, Moniyampur	19	Prathmik Vidyalay, Kungarapar
2	Prathmik Vidyalay Ahiyatapur	19A	Prathmik Vidyalay, Kungarapar
3	Prathmik Vidyalay, Balava	20	Madhya Vidyalay ,Kaila (Pashchim Bhag)
4	Prathmik Vidyalay, Mushahari	21	Madhya Vidhlay Kaila Purvi Bhag
5	Prathmik Vidyalay, Gilanichak	22	Utkramit Madhya Vidyalay, Preman Vigaha (Uttar Bhag)
6	Samudayik Bhavan, Malavigaha	23	Utkramit Madhya Vidyalay, Preman Vigaha (Dakshin Bhag)
7	Urdu Prathmik Vidyalay, Suleman Chak	24	Madhya Vidyalay , Lodipur
8	Prathmik Vidhyalay, Goraipur	25	Samudayik Bhavan, Tina
9	Madhya Vidyalay, Chistipur	26	Prathmik Vidyalay, Usamanapur
10	Anganbari Kendra Janaki Vigaha	27	Madhya Vidyalay, Mahamadapur
11	Utkramit Madhya Vidyalay, Badiha Uttar Bhag	28	Madhya Vidyalay Nagaranausa (Purab Bhag)
11A	Utkramit Madhya Vidyalay, Badiha Uttar Bhag	28A	Madhya Vidyalay Nagaranausa (Purab Bhag)
12	Prathmik Vidyalay Bhutahakhar Dakshin Bhag	29	Madhya Vidyalay Nagaranausa (Pashchim Bhag)
12A	Prathmik Vidyalay Bhutahakhar Dakshin Bhag	30	Uchcha Vidyalay Nagaranausa (Uttari Bhag)
13	Prathmik Vidyalay, Pahadpur	31	Uchcha Vidyalay Nagaranausa (Dakshin Bhag)
14	Madhya Vidyalay, Prasdiha	32	Uchcha Vidyalay Nagaranausa Madhy Bhag
15	Prathmik Vidyalay, Bhadarudih Purbi Bhag	33	Samudayik Bhawan, Thibarpar
15A	Prathmik Vidyalay, Bhadarudih Purbi Bhag	34	Prathmik Vidyalay Phata Vigaha
16	Prathmik Vidyalay, Bhadaru Vigaha	35	Kanya Uchcha Vidyalay, Nagaranausa Purbi Bhag
17	Prathmik Vidyalay, Shahapur	35A	Kanya Uchcha Vidyalay, Nagaranausa Purbi Bhag
18	Prathmik Vidyalay, Punitapuri Balava	36	Samudayik Bhavan, Jalalapur

Contd....

Polling Station Level Election Results

Polling Station-wise Votes Secured by Overall Top Five Parties in Harnaut Assembly in Assembly Election (AE) under Nalanda Parliamentary Constituency in Bihar (2020)

Number of Polling Station	Winner - Hari Narayan Singh (JD(U))	Runner-up - Mamta Devi (LJP)	3rd - Kundan Kumar (INC)	4th - Kaushlendra Kumar Singh (BSP)	5th - Ashok Kumar Singh (IND)	NOTA	Other	Total Votes Secured
31	240	106	26	5	5	3	64	449
32	153	73	102	5	1	1	31	366
33	173	192	155	6	0	6	32	564
34	97	203	1	0	1	2	26	330
35	30	48	123	5	4	1	21	232
35A	33	58	143	4	3	2	12	255
36	70	238	28	1	3	0	81	421
36A	56	277	24	7	4	2	53	423
37	177	97	53	5	2	2	32	368
38	131	77	1	2	0	1	78	290
39	65	16	101	1	8	1	31	223
40	176	152	57	7	5	1	54	452
41	197	79	2	4	1	3	63	349
42	167	115	10	0	1	4	69	366
42A	193	77	13	3	0	2	84	372
43	196	57	41	6	3	1	48	352
43A	180	96	25	35	0	2	46	384
44	271	61	18	3	1	2	29	385
45	242	154	16	8	44	6	98	568
46	151	65	67	5	27	1	40	356
46A	103	48	34	97	16	6	32	336
47	51	113	120	3	22	3	43	355
47A	111	90	71	2	14	5	43	336
48	138	73	79	71	11	5	68	445
49	72	68	194	8	11	0	11	364
50	127	86	76	8	1	2	44	344
51	98	65	96	5	6	3	47	320
52	158	169	71	4	0	0	22	424
53	111	173	3	0	3	1	26	317
53A	NV	NV	NV	NV	NV	NV	NV	NV
54	154	74	52	73	1	3	48	405
55	164	70	24	2	3	3	20	286
55A	121	108	39	4	5	1	31	309
56	47	16	312	7	5	0	26	413
57	173	211	27	3	1	2	59	476

Contd....

Polling Station Level Election Results

Winner, Runner-up and 3rd Party Position & Winning Margin According to Polling Stations in Harnaut Assembly in Assembly Election (AE) under Nalanda Parliamentary Constituency in Bihar (2020)

Polling Station Number	Winner Party	Winner Votes (%)	Runner-up Party	Runner-up Votes (%)	Winning Margin Votes (%)	Third Party	Third Party Votes (%)	Other Votes (%)
58	JD(U)	140 (38.78)	INC	104 (28.81)	36 (9.97)	LJP	50 (13.85)	67 (18.56)
59	JD(U)	183 (66.3)	LJP	49 (17.75)	134 (48.55)	INC	9 (3.26)	35 (12.68)
59A	JD(U)	167 (59.22)	LJP	59 (20.92)	108 (38.3)	INC	24 (8.51)	32 (11.35)
60	JD(U)	147 (38.38)	INC	90 (23.5)	57 (14.88)	LJP	82 (21.41)	64 (16.71)
60A	JD(U)	139 (39.94)	LJP	44 (12.64)	95 (27.3)	INC	40 (11.49)	125 (35.92)
61	JD(U)	346 (63.49)	LJP	100 (18.35)	246 (45.14)	INC	10 (1.83)	89 (16.33)
62	INC	125 (33.78)	JD(U)	91 (24.59)	34 (9.19)	LJP	71 (19.19)	83 (22.43)
63	JD(U)	281 (65.2)	LJP	63 (14.62)	218 (50.58)	PBI	13 (3.02)	74 (17.17)
64	JD(U)	327 (78.99)	LJP	46 (11.11)	281 (67.88)	INC	9 (2.17)	32 (7.73)
65	JD(U)	235 (51.2)	INC	57 (12.42)	178 (38.78)	LJP	38 (8.28)	129 (28.1)
66	JD(U)	255 (44.74)	INC	86 (15.09)	169 (29.65)	IND (MK)	38 (6.67)	191 (33.51)
67	JD(U)	231 (46.48)	INC	82 (16.5)	149 (29.98)	IND (PK)	59 (11.87)	125 (25.15)
68	INC	204 (54.84)	LJP	51 (13.71)	153 (41.13)	JD(U)	47 (12.63)	70 (18.82)
68A	INC	190 (56.21)	JD(U)	71 (21.01)	119 (35.2)	JAPL	17 (5.03)	60 (17.75)
69	LJP	167 (49.12)	JD(U)	127 (37.35)	40 (11.77)	INC	8 (2.35)	38 (11.18)
69A	LJP	196 (51.04)	JD(U)	121 (31.51)	75 (19.53)	INC	7 (1.82)	60 (15.63)
70	LJP	80 (35.71)	JD(U)	75 (33.48)	5 (2.23)	INC	25 (11.16)	44 (19.64)
70A	LJP	107 (37.41)	JD(U)	68 (23.78)	39 (13.63)	INC	51 (17.83)	60 (20.98)
71	LJP	92 (32.86)	JD(U)	71 (25.36)	21 (7.5)	INC	51 (18.21)	66 (23.57)
72	LJP	188 (36.58)	JD(U)	170 (33.07)	18 (3.51)	BSP	51 (9.92)	105 (20.43)
73	JD(U)	107 (40.68)	INC	75 (28.52)	32 (12.16)	LJP	50 (19.01)	31 (11.79)
73A	INC	183 (66.06)	LJP	27 (9.75)	156 (56.31)	JD(U)	22 (7.94)	45 (16.25)
74	JD(U)	202 (56.27)	LJP	47 (13.09)	155 (43.18)	INC	31 (8.64)	79 (22.01)
75	JD(U)	135 (49.63)	LJP	105 (38.6)	30 (11.03)	INC	9 (3.31)	23 (8.46)
75A	JD(U)	163 (51.42)	LJP	75 (23.66)	88 (27.76)	INC	23 (7.26)	56 (17.67)
76	JD(U)	149 (45.43)	LJP	107 (32.62)	42 (12.81)	PBI	9 (2.74)	63 (19.21)
76A	LJP	101 (39.76)	JD(U)	79 (31.1)	22 (8.66)	IND (AKS)	14 (5.51)	60 (23.62)
77	JD(U)	194 (54.04)	LJP	121 (33.7)	73 (20.34)	INC	6 (1.67)	38 (10.58)
78	JD(U)	147 (45.09)	LJP	97 (29.75)	50 (15.34)	INC	22 (6.75)	60 (18.4)
78A	JD(U)	124 (37.92)	LJP	107 (32.72)	17 (5.2)	BSP	35 (10.7)	61 (18.65)
79	JD(U)	109 (40.37)	LJP	82 (30.37)	27 (10)	INC	29 (10.74)	50 (18.52)
79A	JD(U)	142 (57.72)	LJP	65 (26.42)	77 (31.3)	BSP	10 (4.07)	29 (11.79)
80	LJP	222 (43.79)	JD(U)	124 (24.46)	98 (19.33)	INC	35 (6.9)	126 (24.85)
81	LJP	101 (30.42)	JD(U)	86 (25.9)	15 (4.52)	IND (MK)	50 (15.06)	95 (28.61)
82	JD(U)	113 (47.68)	LJP	87 (36.71)	26 (10.97)	PMPT	8 (3.38)	29 (12.24)

Contd....

Socio-Economic Amenities - Rural

Access to Education Facilities

Particulars	Number of Villages (% of Population)				
	Available	Not Available	If Not Available (Distance of Nearest Facility)		
			A	B	C
Govt. Primary School	163 (98)	13 (2)	9 (2)	1 (0)	0 (0)
Private Primary School	32 (25)	144 (75)	0 (0)	0 (0)	0 (0)
Govt. Middle School	98 (77)	78 (23)	58 (18)	19 (6)	0 (0)
Private Middle School	4 (5)	172 (95)	0 (0)	0 (0)	0 (0)
Govt. Secondary School	33 (36)	143 (64)	0 (0)	4 (1)	137 (60)
Private Secondary School	2 (3)	174 (97)	0 (0)	0 (0)	1 (1)
Govt. Senior Secondary School	9 (13)	167 (87)	43 (27)	98 (48)	25 (11)
Private Senior Secondary School	1 (1)	175 (99)	0 (0)	0 (0)	0 (0)
Govt. Arts and Science Degree College	3 (4)	173 (96)	20 (11)	64 (38)	86 (45)
Private Arts and Science Degree College	3 (2)	173 (98)	1 (0)	0 (0)	0 (0)
Govt. Engineering College	0 (0)	176 (100)	0 (0)	0 (0)	0 (0)
Private Engineering College	0 (0)	176 (100)	0 (0)	0 (0)	176 (100)
Govt. Medicine College	0 (0)	176 (100)	0 (0)	0 (0)	176 (100)
Private Medicine College	0 (0)	176 (100)	0 (0)	0 (0)	0 (0)
Govt. Management Institute	0 (0)	176 (100)	0 (0)	0 (0)	176 (100)
Private Management Institute	0 (0)	176 (100)	0 (0)	0 (0)	0 (0)
Govt. Polytechnic	0 (0)	176 (100)	0 (0)	0 (0)	176 (100)
Private Polytechnic	0 (0)	176 (100)	0 (0)	0 (0)	0 (0)
Govt. Vocational Training School/ITI	1 (2)	175 (98)	1 (0)	32 (20)	142 (77)
Private Vocational Training School/ITI	0 (0)	176 (100)	0 (0)	0 (0)	0 (0)
Govt. Non Formal Training Centre	4 (3)	172 (97)	1 (0)	32 (20)	138 (74)
Private Non Formal Training Centre	1 (2)	175 (98)	0 (0)	0 (0)	0 (0)
Govt. School For Disabled	0 (0)	176 (100)	0 (0)	0 (0)	176 (100)
Private School For Disabled	0 (0)	176 (100)	0 (0)	0 (0)	0 (0)
Government Others	4 (3)	172 (97)	1 (0)	32 (20)	138 (74)
Private Others	1 (2)	175 (98)	0 (0)	0 (0)	0 (0)

Note : Distance A : Less than 5 km; B : Between 5-10 km; C : 10+ km.; Source : Data Analysis is based on 2011 Census.

DISCLAIMER

The Terms of Use and Disclaimer of Datanet India Private Limited (hereinafter referred to as "Datanet") for use of this analysis report of **Harnaut Assembly Constituency (Harnaut Vidhan Sabha) :-**

1. **Assembly Factbook™** is a Registered Trade Mark owned by Datanet.
2. All the maps are sketched and graphical representation only and have not been drawn to the scale and also not to represent the actual geographical area or boundary of the unit.
3. The data for the aforesaid analysis is based on authentic sources and has been culled from the various publications of Census, CSO and NSSO for district and block level data, various central and state government departments, Central & State Elections Commissions and the concerned Returning Officers' releases, Electoral Rolls, Election results and allied publications, internal assessment, surveys, estimates and analysis. Therefore, certain adjustment of data at micro level may have been done to arrive closer to the macro data.
4. Data have been provided on an "As Is" and "As AVAILABLE" basis
5. The colours shown in the maps or diagram and charts of a particular party, alliance or AC are indicative and do not represent them.
6. This publication which includes maps, sheets, graphs and data would be the property under copyright of Datanet only. The user may use these for its internal study, analysis and research purposes. It's public display, re-selling or any commercial uses by the user are not allowed.
7. Datanet has taken due care and caution in compilation and processing of data and allied information, but does not guarantee the accuracy, adequacy or completeness of any information/analysis and will be not responsible for any errors or omissions or for the results obtained from the use of such information/analysis.
8. All the contents for the publication have been culled from various authentic sources and Datanet reasonably believes such sources to be reliable, but does not make any representations, express or implied as to the accuracy or fitness of use of such information. The information or contents of the information/analysis do not constitute advice and should not be relied upon in making (or refraining from making) any decision. Any reliance placed upon the information provided by Datanet is the sole responsibility and strictly at the user's risk.
9. In no event will Datanet be liable for any damages (including, without limitation, damages for loss of business projects, or loss of profits) arising in contract, tort or otherwise from the use of or inability to use any of its contents, or from any action taken (or refrained from being taken) as a result of using the analysis or any of its contents. Datanet its directors, owners, editors, officials, employees, distributor and agents or any associate will not be liable for any errors in the information contained or any consequences arising from the use of the contents of the provided information/analysis.
10. If any provision of these terms and conditions is held invalid or illegal or unenforceable for any reason by any court of competent jurisdiction, such provision shall be severed and the remainder of provisions of the terms and conditions shall continue in full force and effect as if the Term of Use had been executed with the invalid, illegal or unenforceable provision eliminated.
11. If there are any discrepancies in the information provided, please bring it to attention of Datanet for suitable rectification measures.

Buy Online This Complete Book At
Datanet India eBooks Store

www.indiastatpublications.com

or go directly at

[http://www.indiastatpublications.com/
Assembly_factbook/Bihar/Nalanda/ Harnaut](http://www.indiastatpublications.com/Assembly_factbook/Bihar/Nalanda/Harnaut)

 **india**stat**elections**

ISBN : 978-93-5313-088-6

