



Bihar

Assembly Factbook™

Nalanda Assembly Constituency



Key Electoral Data of Nalanda
Assembly Constituency (Vidhan Sabha)

Bihar

Assembly Factbook™

Nalanda Assembly Constituency



Nalanda Vidhan Sabha

Editor & Director

Dr. R.K. Thukral

Research Editor

Dr. Shafeeq Rahman

Compiled, Researched and Published by Datanet India Pvt. Ltd.

D-100, 1st Floor,

Okhla Industrial Area, Phase-I,
New Delhi- 110020.

Ph.: 91-11- 43580781-84

Email : support@indiastatpublications.com

Website : www.indiastatelections.com

Online Book Store :

www.indiastatpublications.com

Report No. : AFB/BR-176-0125

ISBN : 978-93-5313-145-6

First Edition : January, 2018

Eighth Updated Edition : January, 2025

Price : Rs. 11500/-

US\$ 310

© Datanet India Pvt. Ltd.

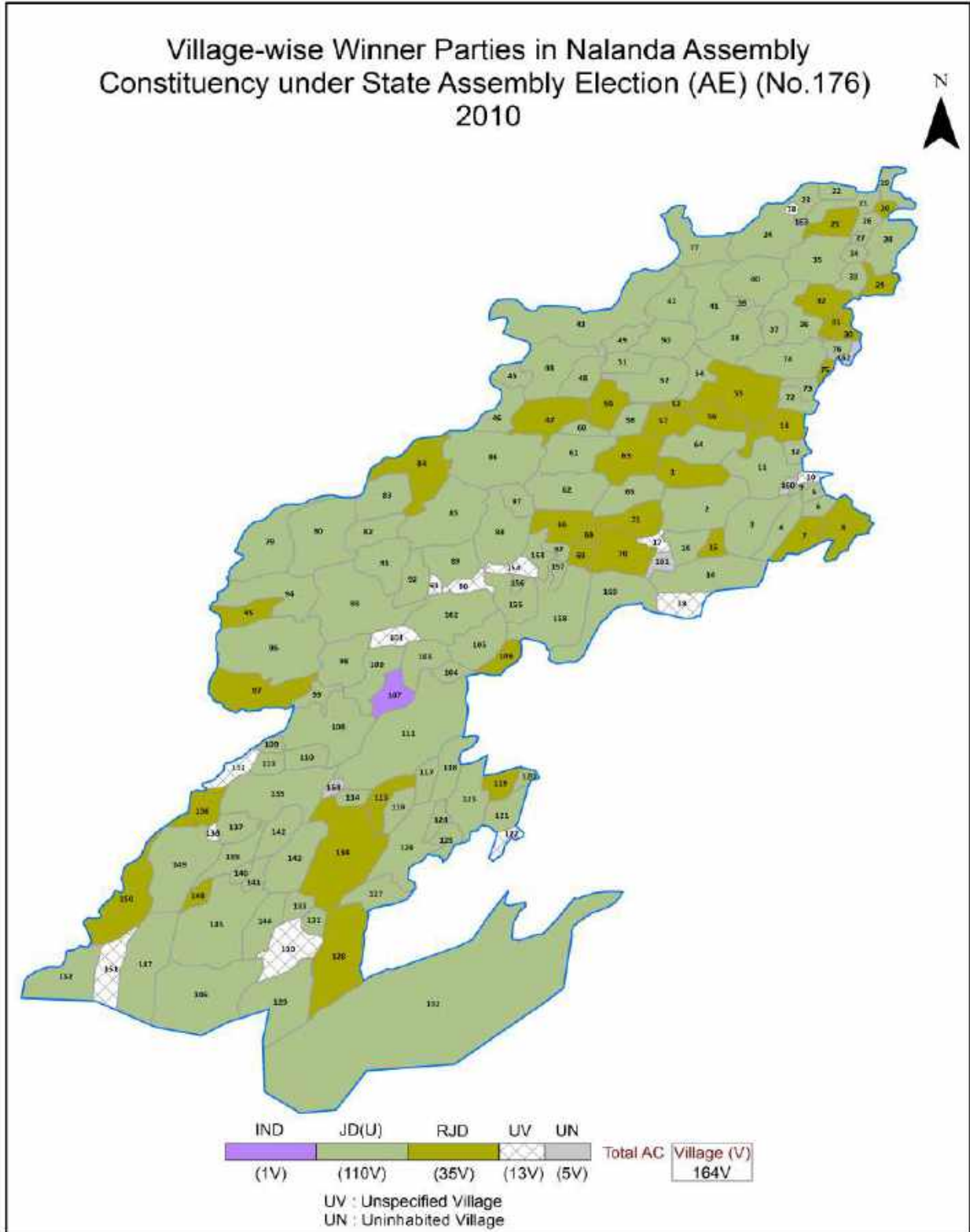
All rights reserved. No part of this book may be reproduced, stored in a retrieval system or transmitted in any form or by any means, mechanical photocopying, photographing, scanning, recording or otherwise without the prior written permission of the publisher. Please refer to Disclaimer at page no. 221 for the use of this publication.

Printed in India

Contents

No.	Particulars	Page No.
	Introduction	
1	Assembly Constituency - (Vidhan Sabha) at a Glance Features of Assembly as per Delimitation Commission of India (2008)	1-2
	Location and Political Maps	
2	Location Map Boundaries of Assembly Constituency - (Vidhan Sabha in District Boundaries of Assembly Constituency under Parliamentary Constituency - (Lok Sabha) Village-wise Winner Parties- 2024, 2019, 2015, 2014, 2010 and 2009	3-11
	Administrative Setup (2011)	
3	District Sub-district Towns Villages Inhabited Villages Uninhabited Villages Village Panchayat Intermediate Panchayat	11-19
	Demographics (2011)	
4	Population Households Rural/Urban Population Villages by Population Size Sex Ratio (Total & 0-6 Years) Religious Population Social Population Literacy Rate	20-21
	Electoral Features	
5	Important Dates of Last Elections Held Electors by Gender Service Electors Voters Voters Turnout Polling Stations & Average Number of Electors per Polling Station Electors by Age Group Present Elected Representatives	22-27
	Historical Summary Election Results	
6	Vote Share of Major Parties Winning Margin (Number & Percentage Polarity of Parties Summary Result of Assembly Segment of Parliamentary Elections 2024, 2019, 2014, 2009, 2004 and 1999 Summary Result of Assembly Elections 2020, 2015, 2010, 2005 (Oct), 2005 (Feb), 2000, 1995, 1990, 1985, 1980 and 1977	28-49
	Polling Station Level Election Results	
7	Name and Number of Polling Station 2024, 2019, 2015, 2014, 2010 and 2009 Polling Station-wise Electors, Voters & Voters Turnout 2024, 2019, 2015, 2014, 2010 and 2009 Polling Station wise Elections Results 2024, 2019, 2015, 2014, 2010 and 2009	50-200
	Share of Assembly Constituency	
8	Share of Assembly Constituency - (Vidhan Sabha) in State, District and Parliamentary Constituency - (Lok Sabha)	201
	Socio-Economic Amenities (2011)	
9	Access to Administrative Units Agricultural, Manufacturing and Industrial Commodities Demographic Indicators Education Health & Manpower Drinking Water Supply Sanitation Entertainment and Recreations Infrastructure Power Food Allocation Distribution and Marketing of Agriculture Commodities Infrastructure Transport and Road Infrastructure Communication Banking and Financial Services Land Use Irrigation Source	203-217
10	Abbreviation & Sources	218-220
11	Disclaimer	221

Location & Political Map



Administrative Setup

List of Village Panchayat & Intermediate Panchayat (Block) Name - 2011

Village Name	Village Panchayat Name	Intermediate Panchayat Name
Ahiapur	Nadiyauna	Noorsarai
Ajaipur	Ajaypur	Noorsarai
Ajnaura	Ajaypur	Noorsarai
Akauna	Akauna	Ben
Amarpura	Meghi Nagwan	Bihar
Amia Bigha	Nohsa	Ben
Andhana	Andhana	Noorsarai
Andwas	Lodipur	Rajgir
Arawan	Arawan	Ben
At	Aut	Ben
Babhaniawan	Eksara	Ben
Bahera	Barnausa	Rajgir
Baibani	Biyavani	Bihar
Banauli	Barnausa	Rajgir
Bansgopalpur	Charuipar	Noorsarai
Bara	Bara	Ben
Bara Khurd	Barakhurd	Noorsarai
Barara	Barara	Noorsarai
Bargaon	Bargaon	Silao
Barhari	Pathruara	Rajgir
Barhauna	Meyar	Rajgir
Barnausa	Barnausa	Rajgir
Basuain	Barnausa	Rajgir
Begampur	Mamurabad	Noorsarai
Belouwa	Nahub	Rajgir
Belsar	Nirpur	Noorsarai
Ben	Ben	Ben
Bhakhri	Meyar	Noorsarai
Bhui	Bhui	Rajgir

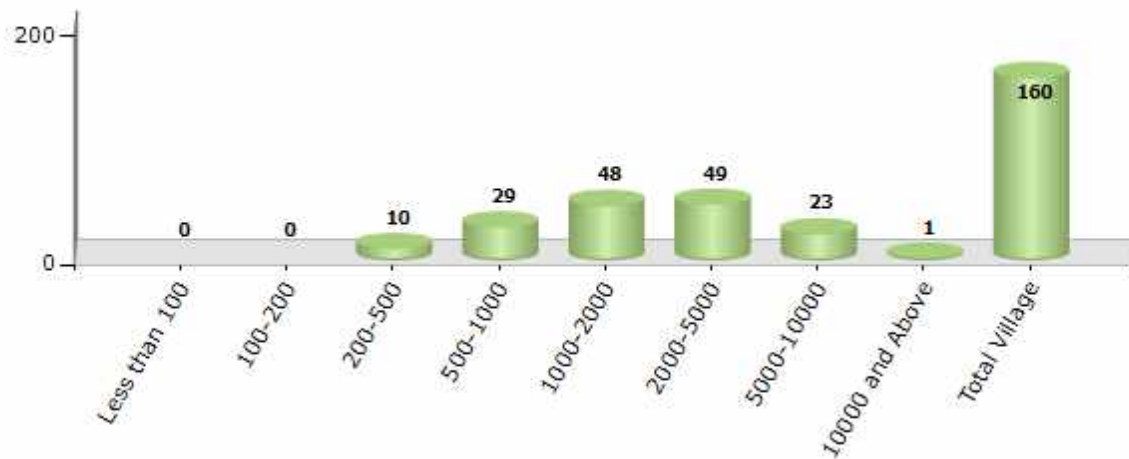
Contd....

Demographics

Number of Villages by Population Size - 2011

100-200	200-500	500-1000	1000-2000	2000-5000	5000-10000	Less than 100	10000 and Above	Total Village
0	10	29	48	49	23	0	1	160

Number of Villages by Population Size - 2011

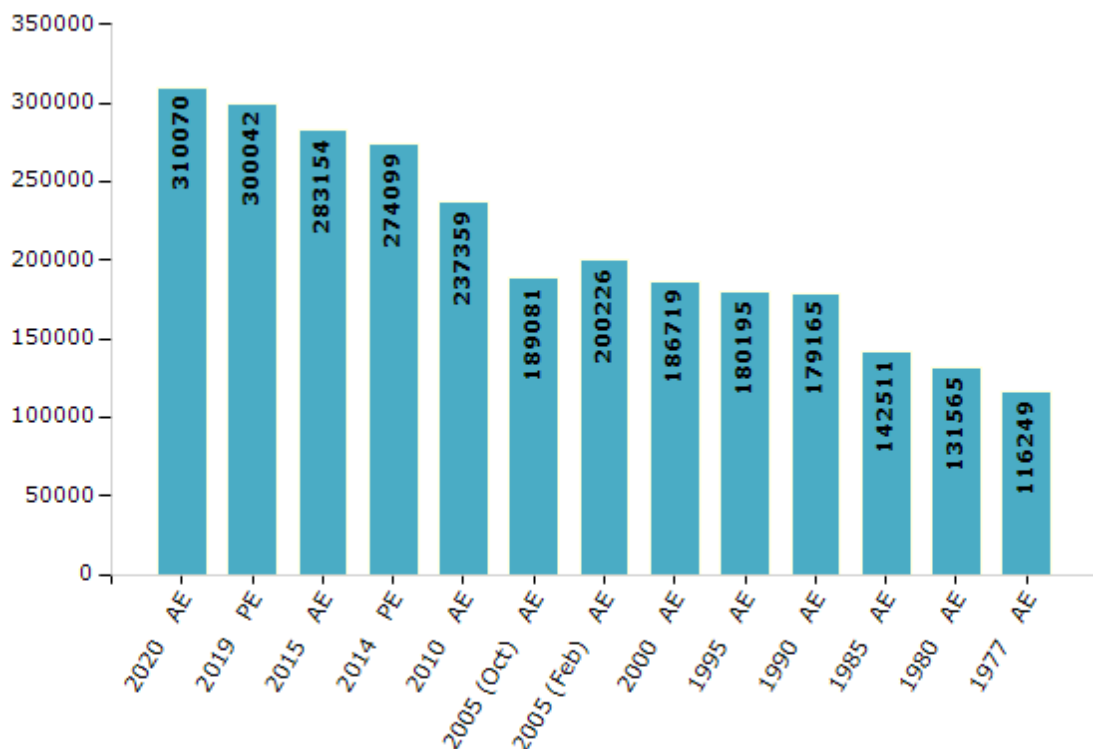


Electoral Features

Electors by Male & Female

Year	Male	Female	Others	Total	Year	Male	Female	Others	Total
2020 AE	164199	145860	11	310070	1995 AE	93610	86585	-	180195
2019 PE	159372	140660	10	300042	1990 AE	90719	88446	-	179165
2015 AE	150303	132841	10	283154	1985 AE	74869	67642	-	142511
2014 PE	145209	128890	0	274099	1980 AE	69130	62435	-	131565
2010 AE	126925	110434	0	237359	1977 AE	60223	56026	-	116249
2009 PE	-	-	-	-	1972 AE	-	-	-	-
2005 (Oct) AE	101013	88068	-	189081	1969 AE	-	-	-	-
2005 (Feb) AE	105934	94292	-	200226	1967 AE	-	-	-	-
2004 PE	-	-	-	-	1962 AE	-	-	-	-
2000 AE	98585	88134	-	186719	1957 AE	-	-	-	-
1999 PE	-	-	-	-	1952 AE	-	-	-	-

Number of Electors



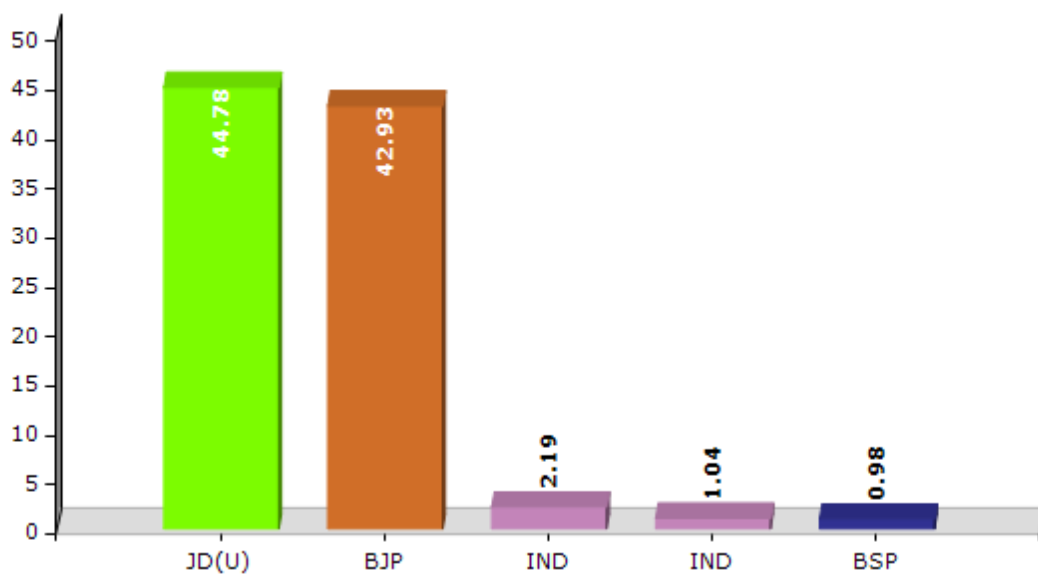
Note : AE : Assembly Election, PE : Assembly Segment of Parliamentary Election

Historical Summary Election Results

Summary Result of Assembly Election - 2015

Candidate Name	Party	Votes	Votes %
Shrawon Kumar	JD(U)	72596	44.78
Kaushlendra Kumar	BJP	69600	42.93
Arunesh Kumar Yadav	IND	3558	2.19
Sanjay Kumar	IND	1678	1.04
Dilip Kumar	BSP	1583	0.98
Jibindra Kumar Pandey Alias- Shivendra Kumar	SHS	1405	0.87
Manmohan Kumar	CPI(ML)(L)	1145	0.71
Dileep Chaudhary	JAPL	1124	0.69
Surendra Kumar	BIP	1068	0.66
Shyampati Devi	ManJP	601	0.37
Vinod Uganwi	RaIP	476	0.29
Deo Kumar	JMM	376	0.23
Partima Devi	RSadP	376	0.23
	NOTA	6531	4.03

Votes Percentage of Top Parties - 2015



Polling Station Level Election Results

Number and Name of Polling Stations (PS) (2015)

Number of Polling Stations	Name of Polling Stations	Number of Polling Stations	Name of Polling Stations
1	Prathmik Vidyalay Kokalak Chak	22	Prathmik Vidyalay Chhatrapur
2	Prathmik Vidyalay Godiha	23	Prathmik Vidyalay Kaidi
3	Madhya Vidyalay Baghar	24	Prathmik Vidyalay Ramadiha
4	Madhya Vidyalay Charuipar Pashchim Bhag	25	Prathmik Vidyalay Bhakhari
5	Madhya Vidyalay Charuipar Purab Bhag	26	Madhya Vidyalay Meyar Pashchim Bhag
6	Utkramit Madhya Vidyalay Nonaura	27	Madhya Vidyalay Meyar Purwi Bhag
7	Prathmik Vidyalay Brijapur	28	Utkramit Madhya Vidyalay Kakadiya
8	Prathmik Vidyalay Beladaripar	29	Samudayik Bhavan Ibrahimapur
9	Rashtra Nirman Uchha Vidyalay Nirapur Belasar Uttari Bhag	30	Prathmik Vidyalay Lohadi
10	Utkramit Madhya Vidyalay Belasar	31	Madhya Vidyalay Nurasaray
11	Madhya Vidyalay Nirapur Budhaul	32	Madhya Vidyalay Nurasaray Sagantapar
12	Prathmik Vidyalay Kashamiri Chak	33	Samudayik Bhavan Nurasaray
13	Prathmik Vidyalay Nosara	34	Prakhand Karyalay Nurasaray Dakshini Bhag
14	Utkramit Madhya Vidyalay Ganapura	35	Prakhand Karyalay Nurasaray Utari Bhag
15	Prathmik Vidyalay Madhara	36	Gandhi Uchha Vidyalay Chandasi Purwi Bhag
16	Utkramit Madhya Vidyalay Mujjafarpur Purwi Bhag	37	Gandhi Uchha Vidyalay Chandasi Pashchimi Bhag
17	Utkramit Madhya Vidyalay Mujjafarpur Pashchimi Bhag	38	Prathmik Vidyalay Jolahapura
18	Prathmik Vidyalay Sirasiya Vigaha	39	Prathmik Vidyalay Jayaprakash Pur Bhediya
19	Utkramit Madhya Vidyalay Kathauli	40	Prathmik Shikshak Prashikshan Mahavidyalay Nurasaray
20	Prathmik Vidyalay Juhichak	41	Rajaswa Kachahari Andhana (Uttari Bhag)
21	Madhya Vidyalay Parasi	42	Rajaswa Kachari Andhana (Dakshin Bhag)

Contd....

Polling Station Level Election Results

Polling Station-wise Votes Secured by Overall Top Five Parties in Nalanda Assembly in Assembly Election (AE) under Nalanda Parliamentary Constituency in Bihar (2015)

Number of Polling Station	Winner - Shrawon Kumar (JD(U))	Runner-up - Kaushlendra Kumar (BJP)	3rd - Arunesh Kumar Yadav (IND)	4th - Sanjay Kumar (IND)	5th - Dilip Kumar (BSP)	NOTA	Other	Total Votes Secured
36	340	68	6	2	1	14	16	447
37	292	245	4	1	1	5	6	554
38	266	193	8	6	5	16	10	504
39	202	285	3	0	3	10	10	513
40	499	346	13	4	9	31	28	930
41	438	40	10	5	2	32	9	536
42	432	174	4	4	10	13	33	670
43	336	353	4	1	9	7	16	726
44	289	338	14	4	7	40	41	733
45	351	125	3	0	1	8	14	502
46	126	264	11	10	45	30	21	507
47	278	87	8	2	3	7	6	391
48	317	128	9	5	2	16	8	485
49	171	251	5	2	8	24	13	474
50	183	178	1	1	30	3	6	402
51	324	291	9	5	6	14	16	665
52	229	204	10	2	17	12	10	484
53	375	122	10	4	2	21	17	551
54	311	253	9	7	11	33	14	638
55	263	254	16	5	9	25	28	600
56	304	99	20	9	19	20	21	492
57	356	147	15	6	3	14	17	558
58	310	197	3	2	5	8	15	540
59	268	200	16	7	14	34	35	574
60	204	190	15	4	6	35	14	468
60A	199	213	5	4	6	15	9	451
61	380	89	12	0	6	10	13	510
62	542	196	20	9	9	20	61	857
63	418	262	15	8	7	26	29	765
64	216	198	10	1	5	13	22	465
65	361	274	10	4	4	21	19	693
66	322	130	23	5	7	34	27	548
67	229	214	3	4	4	14	8	476
68	294	87	9	1	0	8	5	404
69	382	110	8	7	3	24	31	565

Contd....

Polling Station Level Election Results

Winner, Runner-up and 3rd Party Position & Winning Margin According to Polling Stations in Nalanda Assembly in Assembly Election (AE) under Nalanda Parliamentary Constituency in Bihar (2015)

Polling Station Number	Winner Party	Winner Votes (%)	Runner-up Party	Runner-up Votes (%)	Winning Margin Votes (%)	Third Party	Third Party Votes (%)	Other Votes (%)
70	BJP	239 (51.4)	JD(U)	196 (42.15)	43 (9.25)	IND (AKY)	4 (0.86)	26 (5.59)
71	JD(U)	255 (42.71)	BJP	243 (40.7)	12 (2.01)	BSP	13 (2.18)	86 (14.41)
72	BJP	347 (87.19)	JD(U)	23 (5.78)	324 (81.41)	BSP	4 (1.01)	24 (6.03)
73	JD(U)	470 (48.55)	BJP	341 (35.23)	129 (13.32)	MANJP	32 (3.31)	125 (12.91)
74	JD(U)	450 (74.63)	BJP	117 (19.4)	333 (55.23)	IND (AKY)	9 (1.49)	27 (4.48)
75	BJP	225 (47.57)	JD(U)	199 (42.07)	26 (5.5)	IND (AKY)	11 (2.33)	38 (8.03)
76	BJP	310 (49.52)	JD(U)	262 (41.85)	48 (7.67)	BSP	7 (1.12)	47 (7.51)
77	JD(U)	352 (59.26)	BJP	110 (18.52)	242 (40.74)	IND (AKY)	16 (2.69)	116 (19.53)
78	JD(U)	270 (64.59)	BJP	111 (26.56)	159 (38.03)	IND (AKY)	8 (1.91)	29 (6.94)
79	BJP	473 (57.33)	JD(U)	190 (23.03)	283 (34.3)	CPI(ML)(L)	36 (4.36)	126 (15.27)
80	JD(U)	541 (70.72)	BJP	130 (16.99)	411 (53.73)	IND (AKY)	26 (3.4)	68 (8.89)
81	BJP	362 (50.49)	JD(U)	286 (39.89)	76 (10.6)	IND (AKY)	12 (1.67)	57 (7.95)
82	JD(U)	548 (80.59)	BJP	79 (11.62)	469 (68.97)	IND (AKY)	17 (2.5)	36 (5.29)
83	BJP	301 (81.79)	JD(U)	53 (14.4)	248 (67.39)	BSP	1 (0.27)	13 (3.53)
84	JD(U)	283 (47.25)	BJP	260 (43.41)	23 (3.84)	IND (AKY)	13 (2.17)	43 (7.18)
85	JD(U)	380 (67.38)	BJP	130 (23.05)	250 (44.33)	IND (AKY)	8 (1.42)	46 (8.16)
86	JD(U)	168 (52.5)	BJP	110 (34.38)	58 (18.12)	BSP	7 (2.19)	35 (10.94)
87	JD(U)	568 (82.2)	BJP	54 (7.81)	514 (74.39)	IND (AKY)	22 (3.18)	47 (6.8)
88	BJP	423 (63.42)	JD(U)	185 (27.74)	238 (35.68)	IND (SK)	6 (0.9)	53 (7.95)
89	BJP	333 (57.71)	JD(U)	146 (25.3)	187 (32.41)	IND (AKY)	23 (3.99)	75 (13)
90	JD(U)	454 (53.66)	BJP	270 (31.91)	184 (21.75)	IND (AKY)	27 (3.19)	95 (11.23)
91	JD(U)	437 (62.61)	BJP	161 (23.07)	276 (39.54)	IND (AKY)	17 (2.44)	83 (11.89)
92	JD(U)	328 (46.46)	BJP	271 (38.39)	57 (8.07)	IND (AKY)	19 (2.69)	88 (12.46)
93	BJP	474 (58.96)	JD(U)	191 (23.76)	283 (35.2)	IND (AKY)	24 (2.99)	115 (14.3)
94	BJP	373 (47.16)	JD(U)	275 (34.77)	98 (12.39)	IND (AKY)	24 (3.03)	119 (15.04)
95	BJP	270 (50)	JD(U)	211 (39.07)	59 (10.93)	BSP	17 (3.15)	42 (7.78)
96	BJP	260 (60.05)	JD(U)	116 (26.79)	144 (33.26)	IND (AKY)	10 (2.31)	47 (10.85)
97	JD(U)	440 (59.46)	BJP	200 (27.03)	240 (32.43)	IND (AKY)	18 (2.43)	82 (11.08)
98	BJP	365 (62.61)	JD(U)	154 (26.42)	211 (36.19)	CPI(ML)(L)	9 (1.54)	55 (9.43)
99	JD(U)	319 (55.09)	BJP	216 (37.31)	103 (17.78)	IND (AKY)	12 (2.07)	32 (5.53)
100	BJP	295 (47.28)	JD(U)	265 (42.47)	30 (4.81)	IND (AKY)	10 (1.6)	54 (8.65)
101	JD(U)	281 (64.75)	BJP	97 (22.35)	184 (42.4)	IND (SK)	9 (2.07)	47 (10.83)
102	BJP	367 (54.29)	JD(U)	253 (37.43)	114 (16.86)	IND (AKY)	11 (1.63)	45 (6.66)
103	JD(U)	143 (64.41)	BJP	68 (30.63)	75 (33.78)	IND (AKY)	2 (0.9)	9 (4.05)
104	JD(U)	265 (54.08)	BJP	164 (33.47)	101 (20.61)	IND (SK)	11 (2.24)	50 (10.2)

Contd....

Socio-Economic Amenities - Rural

Access to Education Facilities

Particulars	Number of Villages (% of Population)				
	Available	Not Available	If Not Available (Distance of Nearest Facility)		
			A	B	C
Govt. Primary School	156 (99)	4 (1)	4 (1)	0 (0)	0 (0)
Private Primary School	54 (43)	106 (57)	0 (0)	0 (0)	0 (0)
Govt. Middle School	108 (84)	52 (16)	39 (13)	10 (2)	0 (0)
Private Middle School	15 (12)	145 (88)	0 (0)	0 (0)	0 (0)
Govt. Secondary School	24 (25)	136 (75)	54 (31)	67 (33)	0 (0)
Private Secondary School	6 (10)	154 (90)	3 (1)	8 (4)	0 (0)
Govt. Senior Secondary School	8 (9)	152 (91)	21 (14)	105 (61)	26 (15)
Private Senior Secondary School	0 (0)	160 (100)	0 (0)	0 (0)	0 (0)
Govt. Arts and Science Degree College	4 (5)	156 (95)	0 (0)	40 (28)	104 (62)
Private Arts and Science Degree College	1 (0)	159 (100)	4 (1)	7 (3)	0 (0)
Govt. Engineering College	0 (0)	160 (100)	0 (0)	0 (0)	0 (0)
Private Engineering College	0 (0)	160 (100)	0 (0)	0 (0)	160 (100)
Govt. Medicine College	0 (0)	160 (100)	0 (0)	0 (0)	160 (100)
Private Medicine College	0 (0)	160 (100)	0 (0)	0 (0)	0 (0)
Govt. Management Institute	0 (0)	160 (100)	0 (0)	0 (0)	160 (100)
Private Management Institute	0 (0)	160 (100)	0 (0)	0 (0)	0 (0)
Govt. Polytechnic	0 (0)	160 (100)	0 (0)	0 (0)	160 (100)
Private Polytechnic	0 (0)	160 (100)	0 (0)	0 (0)	0 (0)
Govt. Vocational Training School/ITI	2 (3)	158 (97)	7 (4)	20 (13)	131 (81)
Private Vocational Training School/ITI	1 (0)	159 (100)	0 (0)	0 (0)	0 (0)
Govt. Non Formal Training Centre	1 (2)	159 (98)	7 (4)	20 (13)	130 (78)
Private Non Formal Training Centre	2 (3)	158 (97)	0 (0)	0 (0)	0 (0)
Govt. School For Disabled	0 (0)	160 (100)	0 (0)	0 (0)	160 (100)
Private School For Disabled	0 (0)	160 (100)	0 (0)	0 (0)	0 (0)
Government Others	1 (2)	159 (98)	7 (4)	20 (13)	130 (78)
Private Others	2 (3)	158 (97)	0 (0)	0 (0)	0 (0)

Note : Distance A : Less than 5 km; B : Between 5-10 km; C : 10+ km.; Source : Data Analysis is based on 2011 Census.

DISCLAIMER

The Terms of Use and Disclaimer of Datanet India Private Limited (hereinafter referred to as "Datanet") for use of this analysis report of **Nalanda Assembly Constituency (Nalanda Vidhan Sabha)** :-

1. **Assembly Factbook™** is a Registered Trade Mark owned by Datanet.
2. All the maps are sketched and graphical representation only and have not been drawn to the scale and also not to represent the actual geographical area or boundary of the unit.
3. The data for the aforesaid analysis is based on authentic sources and has been culled from the various publications of Census, CSO and NSSO for district and block level data, various central and state government departments, Central & State Elections Commissions and the concerned Returning Officers' releases, Electoral Rolls, Election results and allied publications, internal assessment, surveys, estimates and analysis. Therefore, certain adjustment of data at micro level may have been done to arrive closer to the macro data.
4. Data have been provided on an "As Is" and "As AVAILABLE" basis
5. The colours shown in the maps or diagram and charts of a particular party, alliance or AC are indicative and do not represent them.
6. This publication which includes maps, sheets, graphs and data would be the property under copyright of Datanet only. The user may use these for its internal study, analysis and research purposes. It's public display, re-selling or any commercial uses by the user are not allowed.
7. Datanet has taken due care and caution in compilation and processing of data and allied information, but does not guarantee the accuracy, adequacy or completeness of any information/analysis and will be not responsible for any errors or omissions or for the results obtained from the use of such information/analysis.
8. All the contents for the publication have been culled from various authentic sources and Datanet reasonably believes such sources to be reliable, but does not make any representations, express or implied as to the accuracy or fitness of use of such information. The information or contents of the information/analysis do not constitute advice and should not be relied upon in making (or refraining from making) any decision. Any reliance placed upon the information provided by Datanet is the sole responsibility and strictly at the user's risk.
9. In no event will Datanet be liable for any damages (including, without limitation, damages for loss of business projects, or loss of profits) arising in contract, tort or otherwise from the use of or inability to use any of its contents, or from any action taken (or refrained from being taken) as a result of using the analysis or any of its contents. Datanet its directors, owners, editors, officials, employees, distributor and agents or any associate will not be liable for any errors in the information contained or any consequences arising from the use of the contents of the provided information/analysis.
10. If any provision of these terms and conditions is held invalid or illegal or unenforceable for any reason by any court of competent jurisdiction, such provision shall be severed and the remainder of provisions of the terms and conditions shall continue in full force and effect as if the Term of Use had been executed with the invalid, illegal or unenforceable provision eliminated.
11. If there are any discrepancies in the information provided, please bring it to attention of Datanet for suitable rectification measures.

**Buy Online This Complete Book At
Datanet India eBooks Store**

www.indiastatpublications.com

or go directly at

[http://www.indiastatpublications.com/
Assembly_factbook/Bihar/Nalanda/ Nalanda](http://www.indiastatpublications.com/Assembly_factbook/Bihar/Nalanda/Nalanda)

 **india**stat**elections**

ISBN : 978-93-5313-145-6

