



Bihar

# Assembly Factbook™

Gobindpur Assembly Constituency



Key Electoral Data of Gobindpur  
Assembly Constituency (Vidhan Sabha)

Bihar

# Assembly Factbook™

Gobindpur Assembly Constituency



Gobindpur Vidhan Sabha

## **Editor & Director**

Dr. R.K. Thukral

## **Research Editor**

Dr. Shafeeq Rahman

## **Compiled, Researched and Published by Datanet India Pvt. Ltd.**

D-100, 1st Floor,

Okhla Industrial Area, Phase-I,  
New Delhi- 110020.

Ph.: 91-11- 43580781-84

Email : support@indiastatpublications.com

Website : www.indiastatelections.com

## **Online Book Store :**

www.indiastatpublications.com

**Report No. :** AFB/BR-238-0125

**ISBN :** 978-93-5313-082-4

**First Edition :** January, 2018

**Eighth Updated Edition :** January, 2025

**Price :** Rs. 11500/-

US\$ 310

**© Datanet India Pvt. Ltd.**

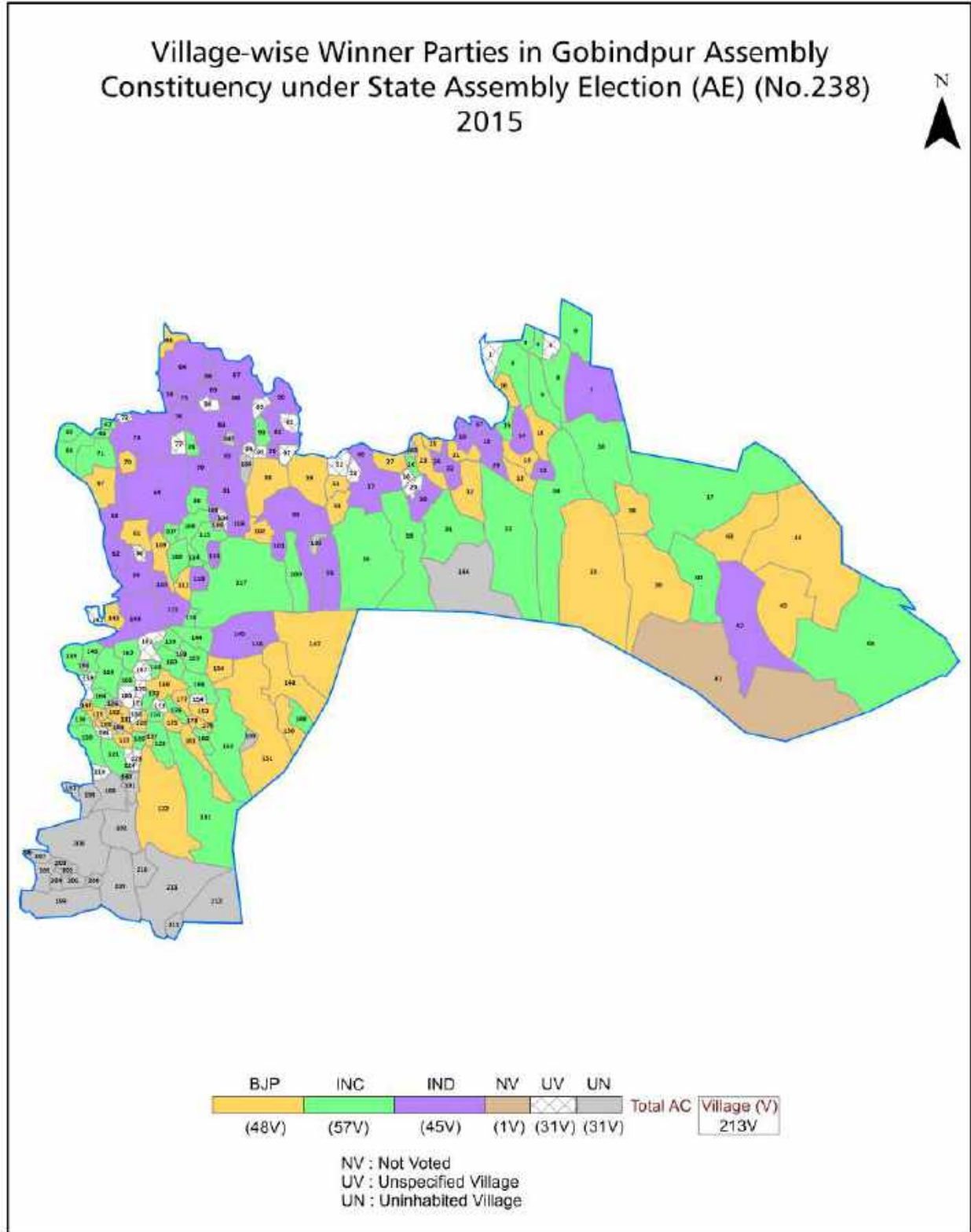
All rights reserved. No part of this book may be reproduced, stored in a retrieval system or transmitted in any form or by any means, mechanical photocopying, photographing, scanning, recording or otherwise without the prior written permission of the publisher. Please refer to Disclaimer at page no. 263 for the use of this publication.

Printed in India

# Contents

No.	Particulars	Page No.
	<b>Introduction</b>	
1	Assembly Constituency - (Vidhan Sabha) at a Glance   Features of Assembly as per Delimitation Commission of India (2008)	1-2
	<b>Location and Political Maps</b>	
2	Location Map   Boundaries of Assembly Constituency - (Vidhan Sabha in District   Boundaries of Assembly Constituency under Parliamentary Constituency - (Lok Sabha)   Village-wise Winner Parties- 2024, 2020, 2019, 2015, 2014, 2010 and 2009	3-11
	<b>Administrative Setup (2011)</b>	
3	District   Sub-district   Towns   Villages   Inhabited Villages   Uninhabited Villages   Village Panchayat   Intermediate Panchayat	12-22
	<b>Demographics (2011)</b>	
4	Population   Households   Rural/Urban Population   Villages by Population Size   Sex Ratio (Total & 0-6 Years)   Religious Population   Social Population   Literacy Rate	23-24
	<b>Electoral Features</b>	
5	Important Dates of Last Elections Held   Electors by Gender   Service Electors   Voters   Voters Turnout   Polling Stations & Average Number of Electors per Polling Station   Electors by Age Group   Present Elected Representatives	25-30
	<b>Historical Summary Election Results</b>	
6	Vote Share of Major Parties   Winning Margin (Number & Percentage   Polarity of Parties   Summary Result of Assembly Segment of Parliamentary Elections 2024, 2019, 2014, 2009, 2004 and 1999   Summary Result of Assembly Elections 2020, 2015, 2010, 2005 (Oct), 2005 (Feb), 2000, 1995, 1990, 1985, 1980, 1977, 1972, 1969 and 1967	31-53
	<b>Polling Station Level Election Results</b>	
7	Name and Number of Polling Station 2024, 2020, 2019, 2015, 2014, 2010 and 2009   Polling Station-wise Electors, Voters & Voters Turnout 2024, 2020, 2019, 2015, 2014, 2010 and 2009   Polling Station wise Elections Results 2024, 2020, 2019, 2015, 2014, 2010 and 2009	54-242
	<b>Share of Assembly Constituency</b>	
8	Share of Assembly Constituency - (Vidhan Sabha) in State, District and Parliamentary Constituency - (Lok Sabha)	243
	<b>Socio-Economic Amenities (2011)</b>	
9	Access to Administrative Units   Agricultural, Manufacturing and Industrial Commodities   Demographic Indicators   Education   Health & Manpower   Drinking Water Supply   Sanitation   Entertainment and Recreations Infrastructure   Power   Food Allocation Distribution and Marketing of Agriculture Commodities Infrastructure   Transport and Road Infrastructure   Communication   Banking and Financial Services   Land Use   Irrigation Source	245-259
10	<b>Abbreviation &amp; Sources</b>	260-262
11	<b>Disclaimer</b>	263

Location & Political Map



## Administrative Setup

### List of Village Panchayat & Intermediate Panchayat (Block) Name - 2011

Village Name	Village Panchayat Name	Intermediate Panchayat Name
Adampur	Roh	Roh
Alipur	Budwara	Gobindpur
Amahra	Baksoti	Gobindpur
Anaila	Mata	Roh
Baghor	Dumri	Roh
Baharagawan	Baniya Bigaha	Gobindpur
Bahiara	Budwara	Gobindpur
Bajwara	Morma	Roh
Baksoti	Baksoti	Gobindpur
Balia	Baksoti	Gobindpur
Baliari	Koshorukhi	Roh
Baniya Bigaha	Baniya Bigaha	Gobindpur
Bansi Chak	Marha	Roh
Bara	Pali	Kawakol
Bara	Mata	Roh
Bara Chak	Morma	Roh
Barail	Dumri	Roh
Baratanr	Gobindpur	Gobindpur
Baraun	Darawa	Kawakol
Barhai Bigha	Mahugain	Gobindpur
Bela	Mahugain	Gobindpur
Belarua	Sughari	Gobindpur
Beldhi	Morma	Roh
Bhandajor	Koshorukhi	Roh
Bhanwarkol	Lalpur	Kawakol
Bhatta	Mata	Roh
Bhawanpur	Mahugain	Gobindpur
Bhikhampur	Vikhampur	Roh
Binayak	Dumri	Roh

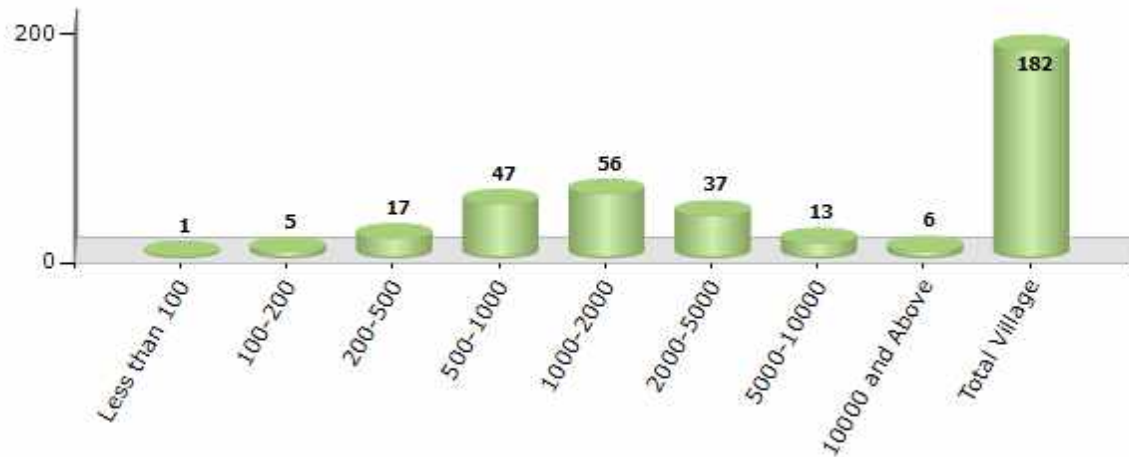
Contd....

## Demographics

### Number of Villages by Population Size - 2011

Less than 100	100-200	200-500	500-1000	1000-2000	2000-5000	5000-10000	10000 and Above	Total Village
1	5	17	47	56	37	13	6	182

Number of Villages by Population Size - 2011

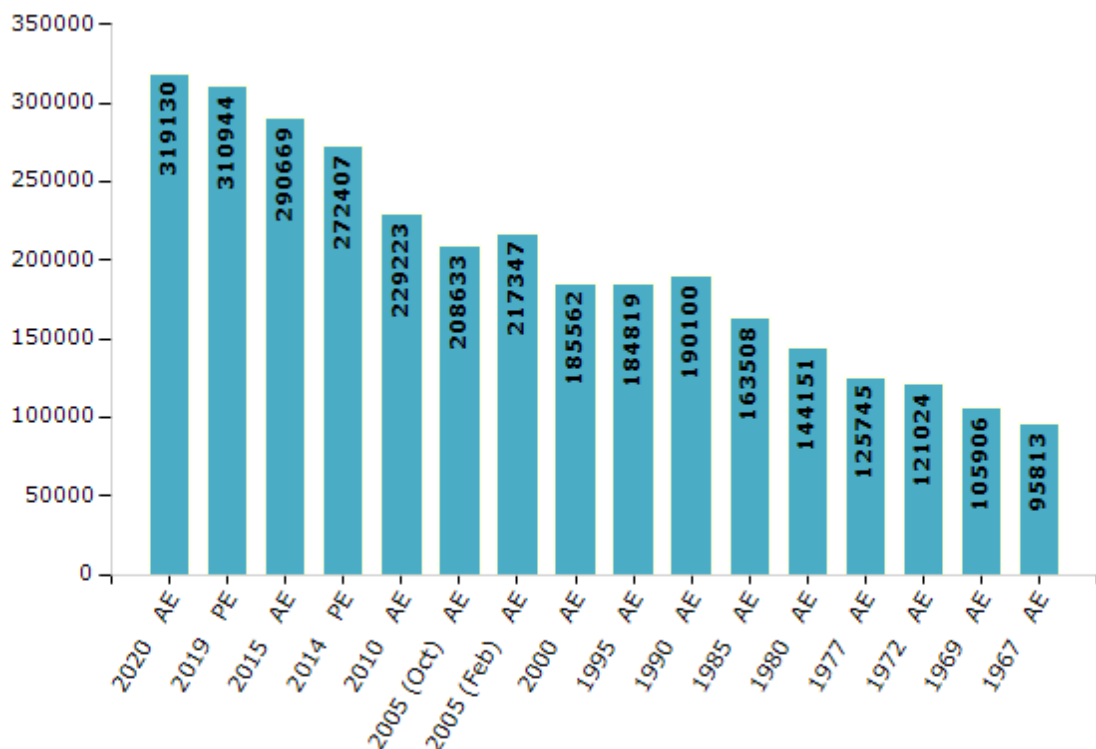


## Electoral Features

### Electors by Male & Female

Year	Male	Female	Others	Total	Year	Male	Female	Others	Total
2020 AE	165948	153165	17	319130	1995 AE	92635	92184	-	184819
2019 PE	161658	149272	14	310944	1990 AE	98990	91110	-	190100
2015 AE	153733	136923	13	290669	1985 AE	81941	81567	-	163508
2014 PE	145195	127203	9	272407	1980 AE	74823	69328	-	144151
2010 AE	123265	105958	0	229223	1977 AE	64970	60775	-	125745
2009 PE	-	-	-	-	1972 AE	72599	48425	-	121024
2005 (Oct) AE	111327	97306	-	208633	1969 AE	63343	42563	-	105906
2005 (Feb) AE	115841	101506	-	217347	1967 AE	-	-	-	95813
2004 PE	-	-	-	-	1962 AE	-	-	-	-
2000 AE	100263	85299	-	185562	1957 AE	-	-	-	-
1999 PE	-	-	-	-	1952 AE	-	-	-	-

Number of Electors



Note : AE : Assembly Election, PE : Assembly Segment of Parliamentary Election

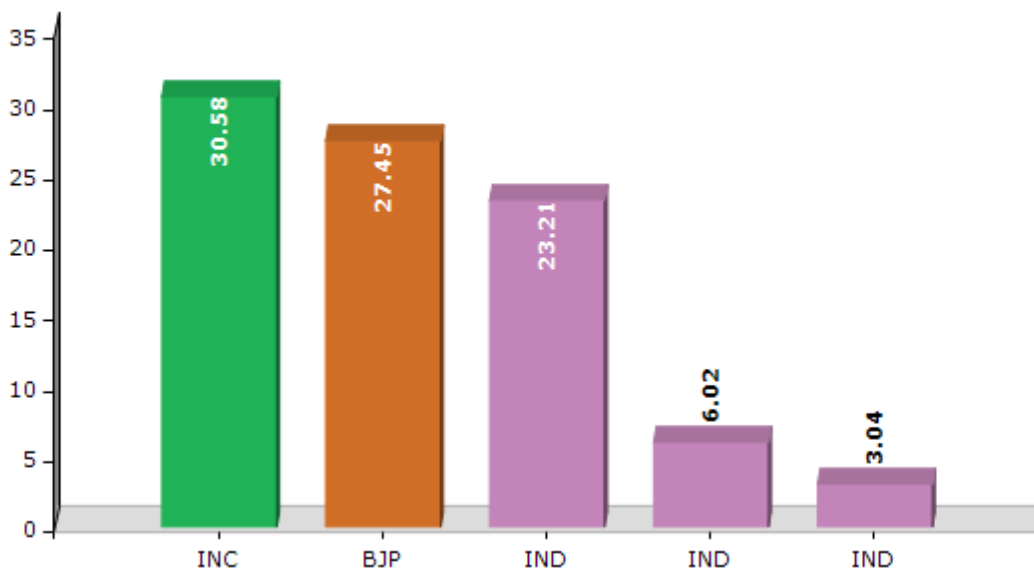


## Historical Summary Election Results

### Summary Result of Assembly Election - 2015

Candidate Name	Party	Votes	Votes %
Purnima Yadav	INC	43016	30.58
Fula Devi	BJP	38617	27.45
Md Kamran	IND	32646	23.21
Sarwan Kumar	IND	8469	6.02
Ramchandra Rajwar	IND	4280	3.04
Satendra Mochi	IND	2093	1.49
Mokim Uddin	BSP	1633	1.16
Ram Krishna Mahto	CPI	1614	1.15
Shankar Prasad	IND	1480	1.05
Vijay Ram	MOSP	1400	1
	NOTA	5411	3.85

Votes Percentage of Top Parties - 2015



## Polling Station Level Election Results

### Number and Name of Polling Stations (PS) (2020)

Number of Polling Stations	Name of Polling Stations	Number of Polling Stations	Name of Polling Stations
1	Utkramit Madhya Vidyalay Devanapura Baya Bhag	14	Utkramit Madhy Vidyalay, Vijayatod Dakshini Bhag
1A	Utkramit Madhya Vidyalay Devanapura Baya Bhag	15	Prathmik Vidyalaya ,Hemjachak
2	Utkramit Madhya Vidyalay Pachamba Urdu Uttari Bhag	16	Prathmik Vidhalay Jalalpur
2A	Utkramit Madhya Vidyalay Pachamba Urdu Uttari Bhag	17	Utkramit Madhy Vidyalay, Samaraitha
3	Utkramit Madhya Vidyalay Pachamba Urdu Dakshini Bhag	18	Madhya Vidyalay, Samharigadh Baya Bhag
3A	Utkramit Madhya Vidyalay Pachamba Urdu Dakshini Bhag	18A	Madhya Vidyalay, Samharigadh Baya Bhag
4	Utkramit Madya Vidyalay, Pachohiya Urdu	19	Madhya Vidyalaya Samharigadh Daya Bhag
4A	Utkramit Madya Vidyalay, Pachohiya Urdu	19A	Madhya Vidyalaya Samharigadh Daya Bhag
5	Prathamik Vidyalay Kharagu Bigaha	20	Panchayat Bhavan Samharigadh
6	Harijan Samudayik Vikash Bhawan Rajwari Tola Ohari Baya Bhag	20A	Panchayat Bhavan Samharigadh
6A	Harijan Samudayik Vikash Bhawan Rajwari Tola Ohari Baya Bhag	21	Prathamik Vidyalay, Gevali Vigaha
7	Madhyamik Vidyalay Ohari Baya Bhag	22	Aanganbadi Kendra Aadampur Nya Bhavan
7A	Madhyamik Vidyalay Ohari Baya Bhag	23	Utkramit Madhy Vidyalay, Rustamapur Baya Bhag
8	Madhya Vidyalay Najaradih Baya Bhag	23A	Utkramit Madhy Vidyalay, Rustamapur Baya Bhag
8A	Madhya Vidyalay Najaradih Baya Bhag	24	Prathamik Vidyalay, Beladih
9	Utkramit Madhya Vidhlay Nadaura Pashichmi Bhag Ka Baya Bhag	25	Utkramit Madhya Vidyalay, Morama Purwi Bhag
9A	Utkramit Madhya Vidhlay Nadaura Pashichmi Bhag Ka Baya Bhag	25A	Utkramit Madhya Vidyalay, Morama Purwi Bhag
10	Utkramit Madhya Vidhlay Nadaura Purvi Bhag	26	Utkramit Madhya Vidyalay, Morama Pashchimi Bhag
11	Prathamik Vidyalay Goyathadih	26A	Utkramit Madhya Vidyalay, Morama Pashchimi Bhag
12	Prathamik Vidyalay, Choravar	27	Utkramit Madhy Vidyalay, Santhey Purvi Bhag
13	Utkramit Madhy Vidyalay, Vijayatod Utari Bhag	28	Utkramit Madhy Vidyalay, Santhey Paschimi Bhag

Contd....

## Polling Station Level Election Results

### Polling Station-wise Votes Secured by Overall Top Five Parties in Gobindpur Assembly in Assembly Election (AE) under Nawada Parliamentary Constituency in Bihar (2020)

Number of Polling Station	Winner - MD Kamran (RJD)	Runner-up - Purnima Yadav (JD(U))	3rd - Ranjit Pd. Yadav (LJP)	4th - Ram Yatna Singh (IND)	5th - Anand Priya Deo (RJCHD)	NOTA	Other	Total Votes Secured
24	219	48	28	1	7	7	13	323
25	168	52	30	7	13	12	13	295
25A	226	73	37	7	10	9	13	375
26	236	52	4	8	2	6	5	313
26A	195	87	12	6	25	4	10	339
27	166	55	61	7	1	2	12	304
28	106	75	68	4	4	5	23	285
28A	134	71	78	13	4	8	30	338
29	135	77	48	6	54	6	21	347
29A	122	45	37	8	20	6	36	274
30	58	54	105	2	43	5	45	312
30A	75	91	100	6	21	9	28	330
31	63	203	92	4	4	13	28	407
32	141	69	35	3	5	8	15	276
32A	91	87	53	2	8	11	8	260
33	140	34	9	1	11	1	4	200
33A	112	16	50	4	7	3	4	196
34	116	60	90	7	2	10	38	323
34A	145	67	105	7	6	2	15	347
35	207	42	13	3	0	3	6	274
35A	122	73	76	0	3	5	8	287
36	109	78	113	2	2	1	12	317
36A	185	74	52	2	1	7	17	338
37	126	93	22	4	14	6	7	272
37A	271	23	41	6	1	4	8	354
38	220	3	9	2	1	1	3	239
38A	207	46	38	1	5	4	5	306
39	250	42	0	4	0	1	1	298
39A	298	21	1	7	0	0	0	327
40	145	99	64	1	0	3	7	319
41	131	217	17	1	17	18	51	452
42	233	232	30	16	7	13	49	580
43	183	233	17	8	0	29	23	493
44	122	84	26	5	1	4	5	247
44A	91	130	15	2	0	16	25	279

Contd....

Polling Station Level Election Results

Winner, Runner-up and 3rd Party Position & Winning Margin According to Polling Stations in Gobindpur Assembly in Assembly Election (AE) under Nawada Parliamentary Constituency in Bihar (2020)

Polling Station Number	Winner Party	Winner Votes (%)	Runner-up Party	Runner-up Votes (%)	Winning Margin Votes (%)	Third Party	Third Party Votes (%)	Other Votes (%)
45	JD(U)	139 (56.97)	RJD	56 (22.95)	83 (34.02)	LJP	32 (13.11)	17 (6.97)
45A	JD(U)	89 (41.01)	RJD	55 (25.35)	34 (15.66)	LJP	46 (21.2)	27 (12.44)
46	RJD	131 (34.84)	LJP	95 (25.27)	36 (9.57)	JD(U)	92 (24.47)	58 (15.43)
47	RJD	134 (47.52)	JD(U)	80 (28.37)	54 (19.15)	LJP	45 (15.96)	23 (8.16)
47A	RJD	88 (40.74)	JD(U)	49 (22.69)	39 (18.05)	LJP	41 (18.98)	38 (17.59)
48	RJD	120 (38.34)	JD(U)	105 (33.55)	15 (4.79)	LJP	38 (12.14)	50 (15.97)
48A	RJD	239 (63.4)	JD(U)	89 (23.61)	150 (39.79)	IND (RYS)	7 (1.86)	42 (11.14)
49	RJD	177 (44.14)	JD(U)	144 (35.91)	33 (8.23)	IND (RYS)	18 (4.49)	62 (15.46)
50	RJD	221 (62.08)	JD(U)	91 (25.56)	130 (36.52)	LJP	9 (2.53)	35 (9.83)
51	RJD	377 (95.2)	JD(U)	17 (4.29)	360 (90.91)	LJP	1 (0.25)	1 (0.25)
51A	RJD	262 (88.81)	JD(U)	27 (9.15)	235 (79.66)	IND (RYS)	4 (1.36)	2 (0.68)
52	RJD	417 (94.56)	JD(U)	12 (2.72)	405 (91.84)	IND (RYS)	7 (1.59)	5 (1.13)
53	RJD	216 (82.76)	JD(U)	34 (13.03)	182 (69.73)	IND (RYS)	7 (2.68)	4 (1.53)
53A	RJD	189 (88.32)	JD(U)	19 (8.88)	170 (79.44)	IND (RYS)	4 (1.87)	2 (0.93)
54	RJD	443 (88.42)	JD(U)	40 (7.98)	403 (80.44)	IND (RYS)	14 (2.79)	4 (0.8)
55	RJD	120 (59.11)	JD(U)	65 (32.02)	55 (27.09)	LJP	3 (1.48)	15 (7.39)
55A	RJD	191 (62.42)	JD(U)	93 (30.39)	98 (32.03)	IND (RYS)	12 (3.92)	10 (3.27)
56	RJD	187 (55.99)	JD(U)	111 (33.23)	76 (22.76)	LJP	8 (2.4)	28 (8.38)
57	RJD	166 (44.99)	JD(U)	116 (31.44)	50 (13.55)	IND (RYS)	18 (4.88)	69 (18.7)
57A	RJD	168 (47.19)	JD(U)	144 (40.45)	24 (6.74)	RJCHD	13 (3.65)	31 (8.71)
58	RJD	133 (44.19)	JD(U)	97 (32.23)	36 (11.96)	IND (RYS)	19 (6.31)	52 (17.28)
58A	RJD	135 (43.13)	JD(U)	117 (37.38)	18 (5.75)	IND (RYS)	16 (5.11)	45 (14.38)
59	RJD	208 (57.78)	JD(U)	117 (32.5)	91 (25.28)	LJP	10 (2.78)	25 (6.94)
59A	JD(U)	104 (39.39)	RJD	94 (35.61)	10 (3.78)	LJP	16 (6.06)	50 (18.94)
60	JD(U)	123 (48.05)	RJD	86 (33.59)	37 (14.46)	RJCHD	16 (6.25)	31 (12.11)
60A	JD(U)	121 (42.61)	RJD	114 (40.14)	7 (2.47)	LJP	9 (3.17)	40 (14.08)
61	RJD	91 (42.33)	JD(U)	87 (40.47)	4 (1.86)	LJP	10 (4.65)	27 (12.56)
61A	JD(U)	117 (49.58)	RJD	81 (34.32)	36 (15.26)	LJP	21 (8.9)	17 (7.2)
62	RJD	261 (58.65)	JD(U)	136 (30.56)	125 (28.09)	LJP	26 (5.84)	22 (4.94)
63	RJD	271 (71.32)	JD(U)	61 (16.05)	210 (55.27)	LJP	27 (7.11)	21 (5.53)
64	RJD	146 (55.09)	JD(U)	86 (32.45)	60 (22.64)	LJP	14 (5.28)	19 (7.17)
64A	JD(U)	137 (42.81)	RJD	95 (29.69)	42 (13.12)	LJP	33 (10.31)	55 (17.19)
65	RJD	190 (73.08)	JD(U)	31 (11.92)	159 (61.16)	LJP	18 (6.92)	21 (8.08)
65A	RJD	156 (53.24)	LJP	97 (33.11)	59 (20.13)	JD(U)	14 (4.78)	26 (8.87)
66	RJD	201 (92.2)	JD(U)	13 (5.96)	188 (86.24)	LJP	2 (0.92)	2 (0.92)

Contd....

## Socio-Economic Amenities - Rural

### Access to Education Facilities

Particulars	Number of Villages (% of Population)				
	Available	Not Available	If Not Available (Distance of Nearest Facility)		
			A	B	C
Govt. Primary School	177 (100)	5 (0)	4 (0)	1 (0)	0 (0)
Private Primary School	36 (15)	146 (85)	0 (0)	0 (0)	0 (0)
Govt. Middle School	100 (80)	82 (20)	60 (14)	20 (6)	2 (0)
Private Middle School	8 (6)	174 (94)	0 (0)	0 (0)	0 (0)
Govt. Secondary School	57 (52)	125 (48)	65 (24)	52 (21)	8 (2)
Private Secondary School	46 (36)	136 (64)	0 (0)	0 (0)	0 (0)
Govt. Senior Secondary School	51 (43)	131 (57)	25 (11)	39 (18)	67 (28)
Private Senior Secondary School	46 (36)	136 (64)	0 (0)	0 (0)	0 (0)
Govt. Arts and Science Degree College	0 (0)	182 (100)	0 (0)	4 (4)	129 (72)
Private Arts and Science Degree College	0 (0)	182 (100)	0 (0)	4 (2)	45 (22)
Govt. Engineering College	0 (0)	182 (100)	0 (0)	0 (0)	0 (0)
Private Engineering College	0 (0)	182 (100)	1 (0)	2 (1)	179 (99)
Govt. Medicine College	0 (0)	182 (100)	0 (0)	1 (0)	181 (100)
Private Medicine College	0 (0)	182 (100)	0 (0)	0 (0)	0 (0)
Govt. Management Institute	0 (0)	182 (100)	0 (0)	3 (1)	90 (38)
Private Management Institute	0 (0)	182 (100)	1 (0)	2 (1)	86 (60)
Govt. Polytechnic	0 (0)	182 (100)	1 (0)	0 (0)	178 (99)
Private Polytechnic	0 (0)	182 (100)	0 (0)	0 (0)	3 (1)
Govt. Vocational Training School/ITI	0 (0)	182 (100)	1 (0)	8 (3)	173 (97)
Private Vocational Training School/ITI	0 (0)	182 (100)	0 (0)	0 (0)	0 (0)
Govt. Non Formal Training Centre	1 (0)	181 (100)	0 (0)	7 (3)	171 (97)
Private Non Formal Training Centre	0 (0)	182 (100)	0 (0)	0 (0)	3 (0)
Govt. School For Disabled	0 (0)	182 (100)	0 (0)	2 (2)	176 (97)
Private School For Disabled	0 (0)	182 (100)	0 (0)	0 (0)	4 (1)
Government Others	0 (0)	182 (100)	0 (0)	2 (2)	3 (5)
Private Others	0 (0)	182 (100)	0 (0)	0 (0)	0 (0)

Note : Distance A : Less than 5 km; B : Between 5-10 km; C : 10+ km.; Source : Data Analysis is based on 2011 Census.

## DISCLAIMER

The Terms of Use and Disclaimer of Datanet India Private Limited (hereinafter referred to as "Datanet") for use of this analysis report of **Gobindpur Assembly Constituency (Gobindpur Vidhan Sabha)** :-

1. **Assembly Factbook™** is a Registered Trade Mark owned by Datanet.
2. All the maps are sketched and graphical representation only and have not been drawn to the scale and also not to represent the actual geographical area or boundary of the unit.
3. The data for the aforesaid analysis is based on authentic sources and has been culled from the various publications of Census, CSO and NSSO for district and block level data, various central and state government departments, Central & State Elections Commissions and the concerned Returning Officers' releases, Electoral Rolls, Election results and allied publications, internal assessment, surveys, estimates and analysis. Therefore, certain adjustment of data at micro level may have been done to arrive closer to the macro data.
4. Data have been provided on an "As Is" and "As AVAILABLE" basis
5. The colours shown in the maps or diagram and charts of a particular party, alliance or AC are indicative and do not represent them.
6. This publication which includes maps, sheets, graphs and data would be the property under copyright of Datanet only. The user may use these for its internal study, analysis and research purposes. It's public display, re-selling or any commercial uses by the user are not allowed.
7. Datanet has taken due care and caution in compilation and processing of data and allied information, but does not guarantee the accuracy, adequacy or completeness of any information/analysis and will be not responsible for any errors or omissions or for the results obtained from the use of such information/analysis.
8. All the contents for the publication have been culled from various authentic sources and Datanet reasonably believes such sources to be reliable, but does not make any representations, express or implied as to the accuracy or fitness of use of such information. The information or contents of the information/analysis do not constitute advice and should not be relied upon in making (or refraining from making) any decision. Any reliance placed upon the information provided by Datanet is the sole responsibility and strictly at the user's risk.
9. In no event will Datanet be liable for any damages (including, without limitation, damages for loss of business projects, or loss of profits) arising in contract, tort or otherwise from the use of or inability to use any of its contents, or from any action taken (or refrained from being taken) as a result of using the analysis or any of its contents. Datanet its directors, owners, editors, officials, employees, distributor and agents or any associate will not be liable for any errors in the information contained or any consequences arising from the use of the contents of the provided information/analysis.
10. If any provision of these terms and conditions is held invalid or illegal or unenforceable for any reason by any court of competent jurisdiction, such provision shall be severed and the remainder of provisions of the terms and conditions shall continue in full force and effect as if the Term of Use had been executed with the invalid, illegal or unenforceable provision eliminated.
11. If there are any discrepancies in the information provided, please bring it to attention of Datanet for suitable rectification measures.

**Buy Online This Complete Book At  
Datanet India eBooks Store**

[www.indiastatpublications.com](http://www.indiastatpublications.com)

or go directly at

[http://www.indiastatpublications.com/  
Assembly\\_factbook/Bihar/Nawada/ Gobindpur](http://www.indiastatpublications.com/Assembly_factbook/Bihar/Nawada/Gobindpur)

 **india**stat**elections**

ISBN : 978-93-5313-082-4

