



Bihar

# Assembly Factbook™

Nautan Assembly Constituency



Key Electoral Data of Nautan  
Assembly Constituency (Vidhan Sabha)

Bihar

# Assembly Factbook™

Nautan Assembly Constituency



Nautan Vidhan Sabha

## **Editor & Director**

Dr. R.K. Thukral

## **Research Editor**

Dr. Shafeeq Rahman

## **Compiled, Researched and Published by Datanet India Pvt. Ltd.**

D-100, 1st Floor,

Okhla Industrial Area, Phase-I,  
New Delhi- 110020.

Ph.: 91-11- 43580781-84

Email : support@indiastatpublications.com

Website : www.indiastatelections.com

## **Online Book Store :**

www.indiastatpublications.com

**Report No. :** AFB/BR-006-0125

**ISBN :** 978-93-5313-148-7

**First Edition :** January, 2018

**Eighth Updated Edition :** January, 2025

**Price :** Rs. 11500/-

US\$ 310

© **Datanet India Pvt. Ltd.**

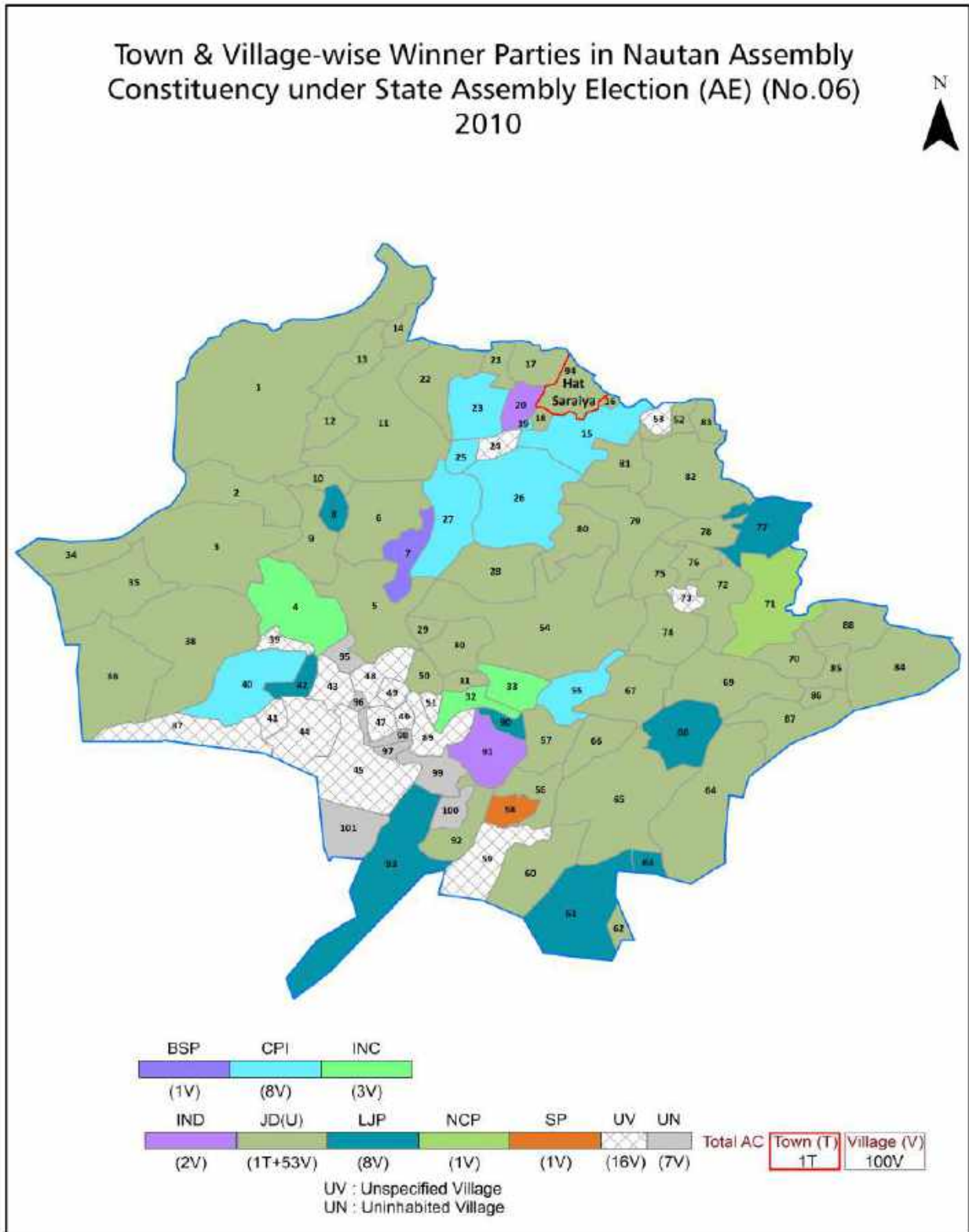
All rights reserved. No part of this book may be reproduced, stored in a retrieval system or transmitted in any form or by any means, mechanical photocopying, photographing, scanning, recording or otherwise without the prior written permission of the publisher. Please refer to Disclaimer at page no. 184 for the use of this publication.

Printed in India

# Contents

No.	Particulars	Page No.
	<b>Introduction</b>	
1	Assembly Constituency - (Vidhan Sabha) at a Glance   Features of Assembly as per Delimitation Commission of India (2008)	1-2
	<b>Location and Political Maps</b>	
2	Location Map   Boundaries of Assembly Constituency - (Vidhan Sabha) in District   Boundaries of Assembly Constituency under Parliamentary Constituency - (Lok Sabha)   Town & Village-wise Winner Parties- 2024, 2019, 2015, 2014, 2010 and 2009	3-11
	<b>Administrative Setup (2011)</b>	
3	District   Sub-district   Towns   Villages   Inhabited Villages   Uninhabited Villages   Village Panchayat   Intermediate Panchayat	11-17
	<b>Demographics (2011)</b>	
4	Population   Households   Rural/Urban Population   Towns and Villages by Population Size   Sex Ratio (Total & 0-6 Years)   Religious Population   Social Population   Literacy Rate	18-19
	<b>Electoral Features</b>	
5	Important Dates of Last Elections Held   Electors by Gender   Service Electors   Voters   Voters Turnout   Polling Stations & Average Number of Electors per Polling Station   Electors by Age Group   Present Elected Representatives	20-25
	<b>Historical Summary Election Results</b>	
6	Vote Share of Major Parties   Winning Margin (Number & Percentage)   Polarity of Parties   Summary Result of Assembly Segment of Parliamentary Elections 2024, 2019, 2014, 2009, 2004 and 1999   Summary Result of Assembly Elections 2020, 2015, 2010, 2005 (Oct), 2005 (Feb), 2000, 1995, 1990, 1985, 1980, 1977, 1972, 1969, 1967 and 1952	26-49
	<b>Polling Station Level Election Results</b>	
7	Name and Number of Polling Station 2024, 2019, 2015, 2014, 2010 and 2009   Polling Station-wise Electors, Voters & Voters Turnout 2024, 2019, 2015, 2014, 2010 and 2009   Polling Station wise Elections Results 2024, 2019, 2015, 2014, 2010 and 2009	50-163
	<b>Share of Assembly Constituency</b>	
8	Share of Assembly Constituency - (Vidhan Sabha) in State, District and Parliamentary Constituency - (Lok Sabha)	164
	<b>Socio-Economic Amenities (2011)</b>	
9	Access to Administrative Units   Agricultural, Manufacturing and Industrial Commodities   Demographic Indicators   Education   Health & Manpower   Drinking Water Supply   Sanitation   Entertainment and Recreations Infrastructure   Power   Food Allocation Distribution and Marketing of Agriculture Commodities Infrastructure   Transport and Road Infrastructure   Communication   Banking and Financial Services   Land Use   Irrigation Source	166-180
10	<b>Abbreviation &amp; Sources</b>	181-183
11	<b>Disclaimer</b>	184

Location & Political Map



## Administrative Setup

### List of Village Panchayat & Intermediate Panchayat (Block) Name - 2011

Village Name	Village Panchayat Name	Intermediate Panchayat Name
Arazi Bandobasti Phulia Khanr	Phulia Khanr	Bairia
Bagahi	Bagahi Ratanpur	Bairia
Baghambarpur	Bagahi Baghamberpur	Bairia
Bahuarwa	Jamuniya	Nautan
Baijua	Baijua	Bairia
Baikunthwa	Dabariya	Nautan
Baikunthwa	Bakunthawa	Nautan
Bairia	Bairia	Bairia
Bairia	Shayampur Kot.	Nautan
Baldew Panditwa	Phulia Khanr	Bairia
Balua Rampur	Malahi Balua	Bairia
Bardaha	Bardahan	Nautan
Bariarpur Khuntahi	Mangal Kala	Nautan
Bhagwanpur	Bhagwanpur	Nautan
Bhataulia	Siswa Saraiya	Bairia
Bhitaha Nizamat	Bhitaha	Bairia
Bisambharpur	Bhagwanpur	Nautan
Bishunpura	Baikunthawa	Nautan
Chargaha	Sansariya	Nautan
Churamanpatti	Pakadiya	Nautan
Dabariya	Dabariya	Nautan
Dhumnagar	Dhumnagar	Nautan
Dih Bharauwa	Baijua	Bairia
Dih Bharauwa	Bathna	Bairia
Dih Bherihari	Bathna	Bairia
Dumaria	Pakhnaha Dumariya	Bairia
Gahiri	Gahiri	Nautan
Gambhirpur	Baijua	Bairia
Gaura	Baijua	Bairia

Contd....

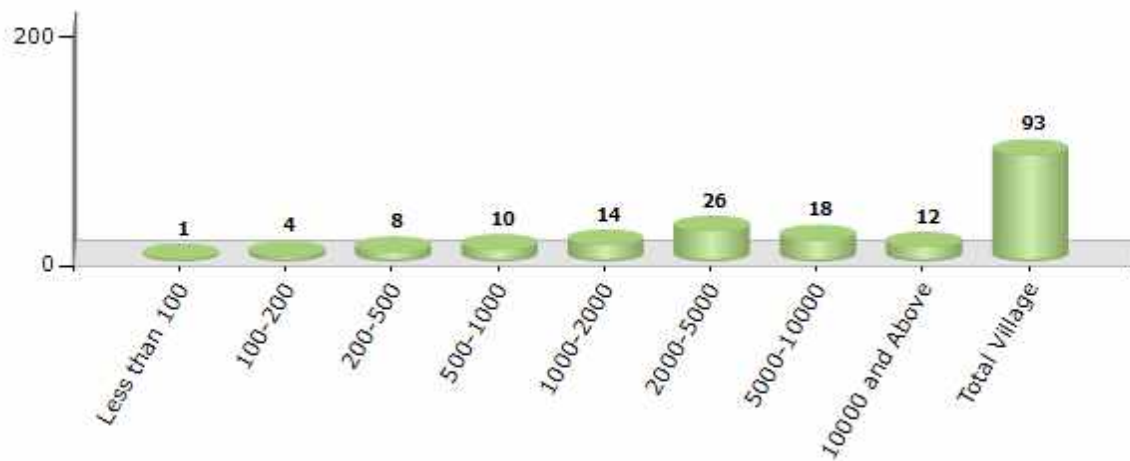


Demographics

Number of Villages by Population Size - 2011

Less than 100	100-200	200-500	500-1000	1000-2000	2000-5000	5000-10000	10000 and Above	Total Village
1	4	8	10	14	26	18	12	93

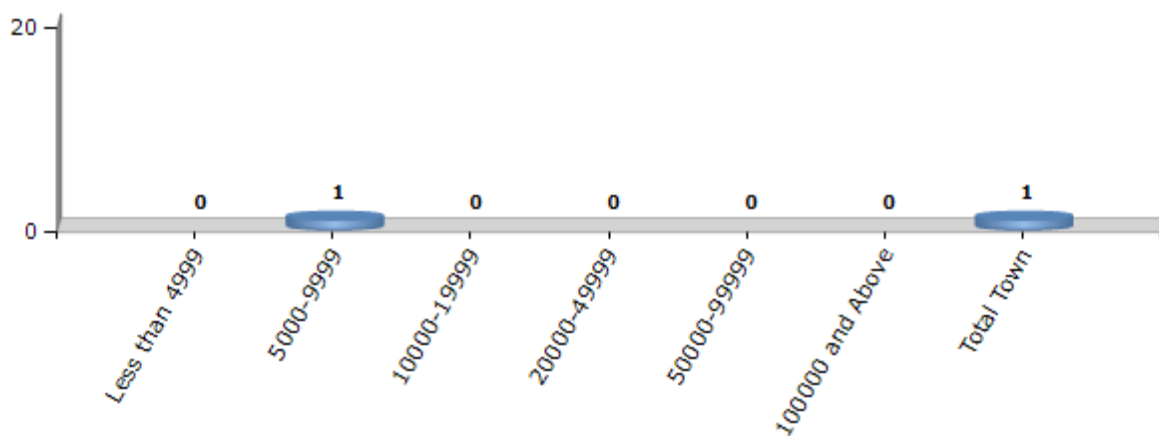
Number of Villages by Population Size - 2011



Number of Towns by Population Size - 2011

Less than 4999	5000-9999	10000-19999	20000-49999	50000-99999	100000 and Above	Total Town
0	1	0	0	0	0	1

Number of Towns by Population Size - 2011

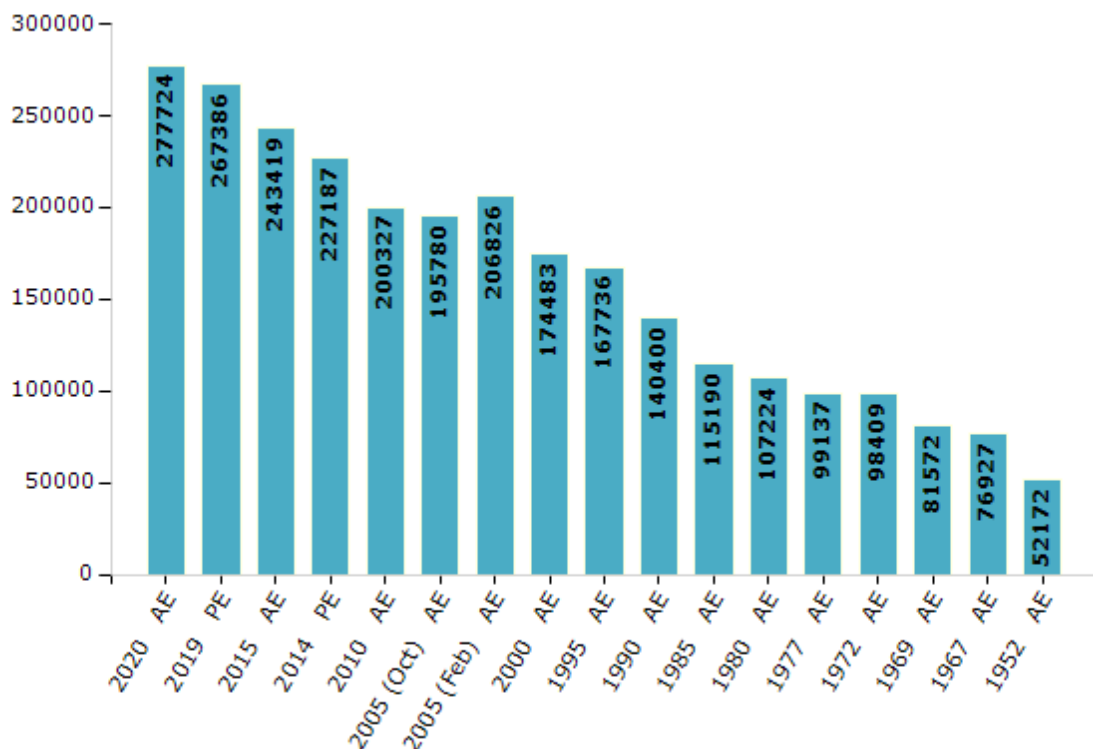


## Electoral Features

### Electors by Male & Female

Year	Male	Female	Others	Total	Year	Male	Female	Others	Total
2020 AE	149936	127767	21	277724	1995 AE	91198	76538	-	167736
2019 PE	145192	122174	20	267386	1990 AE	77841	62559	-	140400
2015 AE	133859	109542	18	243419	1985 AE	63355	51835	-	115190
2014 PE	124704	102470	13	227187	1980 AE	58523	48701	-	107224
2010 AE	109573	90754	0	200327	1977 AE	53970	45167	-	99137
2009 PE	-	-	-	-	1972 AE	54021	44388	-	98409
2005 (Oct) AE	106442	89338	-	195780	1969 AE	43649	37923	-	81572
2005 (Feb) AE	112241	94585	-	206826	1967 AE	-	-	-	76927
2004 PE	-	-	-	-	1962 AE	-	-	-	-
2000 AE	95062	79421	-	174483	1957 AE	-	-	-	-
1999 PE	-	-	-	-	1952 AE	-	-	-	52172

Number of Electors



Note : AE : Assembly Election, PE : Assembly Segment of Parliamentary Election



## Historical Summary Election Results

### Summary Result of Assembly Election - 2015

Candidate Name	Party	Votes	Votes %
Narayan Prasad	BJP	66697	44.35
Baidyanath Prasad Mahto	JD(U)	52362	34.82
Raj Kumar Prasad	IND	4287	2.85
Gallu Chaudhari	CPI	4242	2.82
Santosh Chaudhary	IND	3995	2.66
Shailesh Kushawaha	BSP	3873	2.58
Punyadev Prasad	IND	2949	1.96
Nawal Kishor Pathak	SHS	2231	1.48
Ratan Kumar Sarkar	IND	1452	0.97
Sanjay Kumar Kushwaha	SP	1384	0.92
Shankar Chaudhari	GJDS	1108	0.74
Radhakrishna Prasad	JMM	925	0.62
Priya Ranjan	IND	906	0.6
Islam	IND	870	0.58
Hamid Ali	RaJPa	660	0.44
	NOTA	2438	1.62

## Polling Station Level Election Results

### Number and Name of Polling Stations (PS) (2015)

Number of Polling Stations	Name of Polling Stations	Number of Polling Stations	Name of Polling Stations
1	Madhya Vidyalay Pujaho Patajirava Purwi Bhag	19	Ukramit Madhya Vidyalay Sahadev Ray Ka Tola Baghambarapur Paschimi Bhag
2	Madhya Vidyalay Pujaho Patajirava Paschimi Bhag	20	Prathamik Vidyalay Sirisiya Kolony
3	Madhya Vidyalay Pujaha Patajirava Madhy Bhag	21	Ukramit Madhya Vidyalay Sirisiya Mathiy
3A	Madhya Vidyalay Pujaha Patajirava Madhy Bhag	22	Ukramit Madhya Vidyalay Malahi Pakka Bhavan
4	Ukramit Madhya Vidyalay Banarahi	23	Uchcha Vidyalay Pakhanaha
5	Ukramit Madhya Vidyalay Urdu Pujaha Gadiyani	24	Uchcha Vidyalay Pakhanaha Naya Bhavan
6	Pujahan Dakabangala Purwi Bhag	25	Ukramit Madhya Vidyalay Balua Ramapurava Purwi Bhag
7	Purha Dakabangala Pashchimi Bhag	26	Ukramit Madhya Vidyalay Balua Ramapurava Pashchim Bhag
8	Kanya Uchcha Vidyalay Pujaha Patajirava	26A	Ukramit Madhya Vidyalay Balua Ramapurava Pashchim Bhag
9	Ukramit Madhya Vidyalay Ranaha Suryapur Purwi Bhag	27	Traisam Bhavan Balua Ramapurava Purwi Bhag
10	Ukramit Madhya Vidyalay Ranaha Suryapur Pashchimi Bhag	28	Traisam Bhavan Balua Ramapurava Pashchim Bhag
11	Ukramit Madhya Vidyalay Ranaha Lala Tola	29	Madhya Vidyalay Ozabaliya
11A	Ukramit Madhya Vidyalay Ranaha Lala Tola	30	Panchayat Bhavan Saraiya
12	Anganwari Kendra Ghodahiya	31	Prathamik Vidyalay Sisava Sareya
13	Madhya Vidyalay Bagahi Baghambarapur Dakshini Bhag	32	Ukramit Madhya Vidyalay Mazariya Colony
13A	Madhya Vidyalay Bagahi Baghambarapur Dakshini Bhag	33	Ukramit Madhya Vidyalay Bhatavaliya Mathauli Me Sthit
14	Madhya Vidyalay Bagahi Baghambarpur Madhy Bhag	34	Prathamik Vidyalay Mathauli
15	Madhya Vidyalay Bagahi Baghambarpur Uttri Bhag	35	Ukramit Madhya Vidyalay Tumakadiya Purwi Bhag
16	Prathamik Vidyalay Nimuiya Purwi Bhag	35A	Ukramit Madhya Vidyalay Tumakadiya Purwi Bhag
17	Prathamik Vidyalay Nimuiya Pashchami Bhag	36	Ukramit Madhya Vidyalay Tumakadiya Pashchimi Bhag
18	Ukramit Madhya Vidyalay Sahadev Ray Ka Tola Baghambarapur Purbi Bhag	36A	Ukramit Madhya Vidyalay Tumakadiya Pashchimi Bhag

Contd....

## Polling Station Level Election Results

### Polling Station-wise Votes Secured by Overall Top Five Parties in Nautan Assembly in Assembly Election (AE) under Paschim Champaran Parliamentary Constituency in Bihar (2015)

Number of Polling Station	Winner - Narayan Prasad (BJP)	Runner-up - Baidyanath Prasad Mahto (JD(U))	3rd - Raj Kumar Prasad (IND)	4th - Gallu Chaudhari (CPI)	5th - Santosh Chaudhary (IND)	NOTA	Other	Total Votes Secured
32	961	18	7	8	27	5	25	1051
33	516	390	31	20	18	22	107	1104
34	560	87	0	10	9	4	30	700
35	369	65	12	13	19	10	53	541
35A	254	75	19	10	26	15	87	486
36	182	255	25	18	48	31	68	627
36A	289	79	4	14	31	7	52	476
37	476	279	2	21	1	10	55	844
38	565	124	5	8	4	1	28	735
39	580	177	15	9	9	12	45	847
40	581	55	2	5	7	4	28	682
41	238	229	11	16	5	3	23	525
42	283	328	16	198	18	14	64	921
43	139	169	9	191	16	7	86	617
44	170	292	7	80	6	10	44	609
45	96	355	10	10	10	7	44	532
46	208	195	12	12	11	6	205	649
47	320	256	16	17	11	13	65	698
48	207	308	36	30	31	25	241	878
49	623	232	11	14	15	6	52	953
50	178	292	8	15	16	3	78	590
51	100	278	13	18	7	16	79	511
52	107	209	15	233	12	14	65	655
53	74	47	6	340	25	13	27	532
54	114	668	7	5	21	4	24	843
55	363	119	11	21	18	9	72	613
56	138	257	17	10	17	6	43	488
57	364	116	5	15	9	7	46	562
58	472	62	23	19	29	26	266	897
59	277	203	15	19	17	17	321	869
60	321	31	2	1	11	3	9	378
61	243	194	15	68	15	17	82	634
62	174	163	13	54	9	2	16	431
63	278	82	12	180	12	8	60	632
63A	183	127	15	64	9	13	26	437

Contd....

## Polling Station Level Election Results

### Winner, Runner-up and 3rd Party Position & Winning Margin According to Polling Stations in Nautan Assembly in Assembly Election (AE) under Paschim Champaran Parliamentary Constituency in Bihar (2015)

Polling Station Number	Winner Party	Winner Votes (%)	Runner-up Party	Runner-up Votes (%)	Winning Margin Votes (%)	Third Party	Third Party Votes (%)	Other Votes (%)
64	BJP	211 (40.66)	JD(U)	206 (39.69)	5 (0.97)	IND (RKP)	29 (5.59)	73 (14.07)
64A	JD(U)	344 (66.03)	BJP	61 (11.71)	283 (54.32)	IND (RKP)	31 (5.95)	85 (16.31)
65	JD(U)	245 (43.91)	BJP	184 (32.97)	61 (10.94)	IND (RKP)	27 (4.84)	102 (18.28)
66	BJP	298 (51.92)	JD(U)	114 (19.86)	184 (32.06)	BSP	29 (5.05)	133 (23.17)
67	JD(U)	259 (35.58)	BJP	243 (33.38)	16 (2.2)	SP	75 (10.3)	151 (20.74)
68	BJP	455 (45.55)	JD(U)	239 (23.92)	216 (21.63)	CPI	102 (10.21)	203 (20.32)
69	BJP	236 (43.62)	JD(U)	153 (28.28)	83 (15.34)	SP	47 (8.69)	105 (19.41)
69A	BJP	218 (45.42)	JD(U)	174 (36.25)	44 (9.17)	IND (RKP)	23 (4.79)	65 (13.54)
70	BJP	291 (52.06)	BSP	123 (22)	168 (30.06)	JD(U)	76 (13.6)	69 (12.34)
71	BJP	194 (39.92)	JD(U)	97 (19.96)	97 (19.96)	BSP	41 (8.44)	154 (31.69)
72	JD(U)	250 (41.19)	BJP	247 (40.69)	3 (0.5)	IND (RKP)	25 (4.12)	85 (14)
73	JD(U)	348 (57.62)	BJP	126 (20.86)	222 (36.76)	IND (RKP)	48 (7.95)	82 (13.58)
74	JD(U)	366 (52.97)	BJP	255 (36.9)	111 (16.07)	IND (RKP)	14 (2.03)	56 (8.1)
75	BJP	442 (52.74)	JD(U)	305 (36.4)	137 (16.34)	IND (RKP)	20 (2.39)	71 (8.47)
76	BJP	322 (60.64)	JD(U)	151 (28.44)	171 (32.2)	SP	15 (2.82)	43 (8.1)
77	JD(U)	377 (47.01)	BJP	221 (27.56)	156 (19.45)	IND (RKP)	37 (4.61)	167 (20.82)
78	BJP	330 (45.58)	JD(U)	300 (41.44)	30 (4.14)	CPI	17 (2.35)	77 (10.64)
79	BJP	253 (46)	JD(U)	230 (41.82)	23 (4.18)	GJDS	15 (2.73)	52 (9.45)
80	JD(U)	311 (62.08)	BJP	123 (24.55)	188 (37.53)	IND (SC)	14 (2.79)	53 (10.58)
81	BJP	390 (65.77)	JD(U)	82 (13.83)	308 (51.94)	SP	29 (4.89)	92 (15.51)
82	JD(U)	89 (48.63)	IND (PP)	23 (12.57)	66 (36.06)	BJP	14 (7.65)	57 (31.15)
83	JD(U)	34 (40)	IND (RKP)	7 (8.24)	27 (31.76)	IND (PP)	7 (8.24)	37 (43.53)
84	BJP	83 (39.9)	JD(U)	57 (27.4)	26 (12.5)	BSP	12 (5.77)	56 (26.92)
85	JD(U)	32 (42.11)	BJP	13 (17.11)	19 (25)	IND (PP)	12 (15.79)	19 (25)
86	BJP	161 (57.71)	JD(U)	23 (8.24)	138 (49.47)	IND (RKP)	13 (4.66)	82 (29.39)
87	BJP	199 (42.25)	JD(U)	92 (19.53)	107 (22.72)	CPI	35 (7.43)	145 (30.79)
88	BJP	84 (38.01)	JD(U)	31 (14.03)	53 (23.98)	CPI	26 (11.76)	80 (36.2)
89	BJP	70 (77.78)	JD(U)	13 (14.44)	57 (63.34)	CPI	3 (3.33)	4 (4.44)
90	JD(U)	41 (33.88)	BJP	32 (26.45)	9 (7.43)	SHS	17 (14.05)	31 (25.62)
91	BJP	357 (60.82)	JD(U)	107 (18.23)	250 (42.59)	BSP	21 (3.58)	102 (17.38)
92	BJP	336 (46.03)	JD(U)	304 (41.64)	32 (4.39)	CPI	22 (3.01)	68 (9.32)
93	JD(U)	314 (45.31)	BJP	283 (40.84)	31 (4.47)	SP	21 (3.03)	75 (10.82)
94	BJP	351 (56.25)	JD(U)	176 (28.21)	175 (28.04)	IND (PP)	14 (2.24)	83 (13.3)
95	BJP	231 (54.74)	JD(U)	116 (27.49)	115 (27.25)	IND (RKP)	16 (3.79)	59 (13.98)
95A	BJP	147 (32.89)	JD(U)	136 (30.43)	11 (2.46)	IND (RKP)	30 (6.71)	134 (29.98)

Contd....

## Socio-Economic Amenities - Rural

### Access to Education Facilities

Particulars	Number of Villages (% of Population)				
	Available	Not Available	If Not Available (Distance of Nearest Facility)		
			A	B	C
Govt. Primary School	78 (99)	15 (1)	11 (1)	3 (0)	0 (0)
Private Primary School	16 (38)	77 (62)	1 (0)	0 (0)	0 (0)
Govt. Middle School	47 (82)	46 (18)	22 (9)	16 (6)	3 (0)
Private Middle School	10 (18)	83 (82)	1 (0)	0 (0)	0 (0)
Govt. Secondary School	11 (32)	82 (68)	25 (20)	54 (44)	2 (3)
Private Secondary School	5 (15)	88 (85)	0 (0)	0 (0)	0 (0)
Govt. Senior Secondary School	4 (18)	89 (82)	6 (6)	36 (36)	47 (40)
Private Senior Secondary School	1 (1)	92 (99)	0 (0)	0 (0)	0 (0)
Govt. Arts and Science Degree College	0 (0)	93 (100)	4 (3)	10 (12)	77 (81)
Private Arts and Science Degree College	0 (0)	93 (100)	1 (0)	0 (0)	1 (4)
Govt. Engineering College	0 (0)	93 (100)	0 (0)	0 (0)	0 (0)
Private Engineering College	0 (0)	93 (100)	0 (0)	0 (0)	93 (100)
Govt. Medicine College	0 (0)	93 (100)	0 (0)	14 (12)	24 (27)
Private Medicine College	0 (0)	93 (100)	0 (0)	37 (34)	18 (27)
Govt. Management Institute	0 (0)	93 (100)	0 (0)	0 (0)	93 (100)
Private Management Institute	0 (0)	93 (100)	0 (0)	0 (0)	0 (0)
Govt. Polytechnic	0 (0)	93 (100)	0 (0)	0 (0)	93 (100)
Private Polytechnic	0 (0)	93 (100)	0 (0)	0 (0)	0 (0)
Govt. Vocational Training School/ITI	0 (0)	93 (100)	0 (0)	51 (46)	41 (54)
Private Vocational Training School/ITI	0 (0)	93 (100)	0 (0)	0 (0)	1 (0)
Govt. Non Formal Training Centre	0 (0)	93 (100)	0 (0)	51 (46)	42 (54)
Private Non Formal Training Centre	0 (0)	93 (100)	0 (0)	0 (0)	0 (0)
Govt. School For Disabled	1 (1)	92 (99)	0 (0)	51 (46)	40 (53)
Private School For Disabled	0 (0)	93 (100)	0 (0)	0 (0)	1 (0)
Government Others	1 (1)	92 (99)	0 (0)	0 (0)	2 (4)
Private Others	4 (5)	89 (95)	0 (0)	1 (0)	0 (0)

Note : Distance A : Less than 5 km; B : Between 5-10 km; C : 10+ km.; Source : Data Analysis is based on 2011 Census.

## DISCLAIMER

The Terms of Use and Disclaimer of Datanet India Private Limited (hereinafter referred to as "Datanet") for use of this analysis report of **Nautan Assembly Constituency (Nautan Vidhan Sabha)** :-

1. **Assembly Factbook™** is a Registered Trade Mark owned by Datanet.
2. All the maps are sketched and graphical representation only and have not been drawn to the scale and also not to represent the actual geographical area or boundary of the unit.
3. The data for the aforesaid analysis is based on authentic sources and has been culled from the various publications of Census, CSO and NSSO for district and block level data, various central and state government departments, Central & State Elections Commissions and the concerned Returning Officers' releases, Electoral Rolls, Election results and allied publications, internal assessment, surveys, estimates and analysis. Therefore, certain adjustment of data at micro level may have been done to arrive closer to the macro data.
4. Data have been provided on an "As Is" and "As AVAILABLE" basis
5. The colours shown in the maps or diagram and charts of a particular party, alliance or AC are indicative and do not represent them.
6. This publication which includes maps, sheets, graphs and data would be the property under copyright of Datanet only. The user may use these for its internal study, analysis and research purposes. It's public display, re-selling or any commercial uses by the user are not allowed.
7. Datanet has taken due care and caution in compilation and processing of data and allied information, but does not guarantee the accuracy, adequacy or completeness of any information/analysis and will be not responsible for any errors or omissions or for the results obtained from the use of such information/analysis.
8. All the contents for the publication have been culled from various authentic sources and Datanet reasonably believes such sources to be reliable, but does not make any representations, express or implied as to the accuracy or fitness of use of such information. The information or contents of the information/analysis do not constitute advice and should not be relied upon in making (or refraining from making) any decision. Any reliance placed upon the information provided by Datanet is the sole responsibility and strictly at the user's risk.
9. In no event will Datanet be liable for any damages (including, without limitation, damages for loss of business projects, or loss of profits) arising in contract, tort or otherwise from the use of or inability to use any of its contents, or from any action taken (or refrained from being taken) as a result of using the analysis or any of its contents. Datanet its directors, owners, editors, officials, employees, distributor and agents or any associate will not be liable for any errors in the information contained or any consequences arising from the use of the contents of the provided information/analysis.
10. If any provision of these terms and conditions is held invalid or illegal or unenforceable for any reason by any court of competent jurisdiction, such provision shall be severed and the remainder of provisions of the terms and conditions shall continue in full force and effect as if the Term of Use had been executed with the invalid, illegal or unenforceable provision eliminated.
11. If there are any discrepancies in the information provided, please bring it to attention of Datanet for suitable rectification measures.



**Buy Online This Complete Book At  
Datanet India eBooks Store**

[www.indiastatpublications.com](http://www.indiastatpublications.com)

or go directly at

[http://www.indiastatpublications.com/  
Assembly\\_factbook/Bihar/Paschim\\_Champaran/ Nautan](http://www.indiastatpublications.com/Assembly_factbook/Bihar/Paschim_Champaran/Nautan)

 **india**stat**elections**

ISBN : 978-93-5313-148-7



9 789353 131487