



Bihar

Assembly Factbook™

Bikram Assembly Constituency



Key Electoral Data of Bikram
Assembly Constituency (Vidhan Sabha)

Bihar

Assembly Factbook™

Bikram Assembly Constituency



Bikram Vidhan Sabha

Editor & Director

Dr. R.K. Thukral

Research Editor

Dr. Shafeeq Rahman

Compiled, Researched and Published by Datanet India Pvt. Ltd.

D-100, 1st Floor,

Okhla Industrial Area, Phase-I,
New Delhi- 110020.

Ph.: 91-11- 43580781-84

Email : support@indiastatpublications.com

Website : www.indiastatelections.com

Online Book Store :

www.indiastatpublications.com

Report No. : AFB/BR-191-0125

ISBN : 978-93-5313-060-2

First Edition : January, 2018

Eighth Updated Edition : January, 2025

Price : Rs. 11500/-

US\$ 310

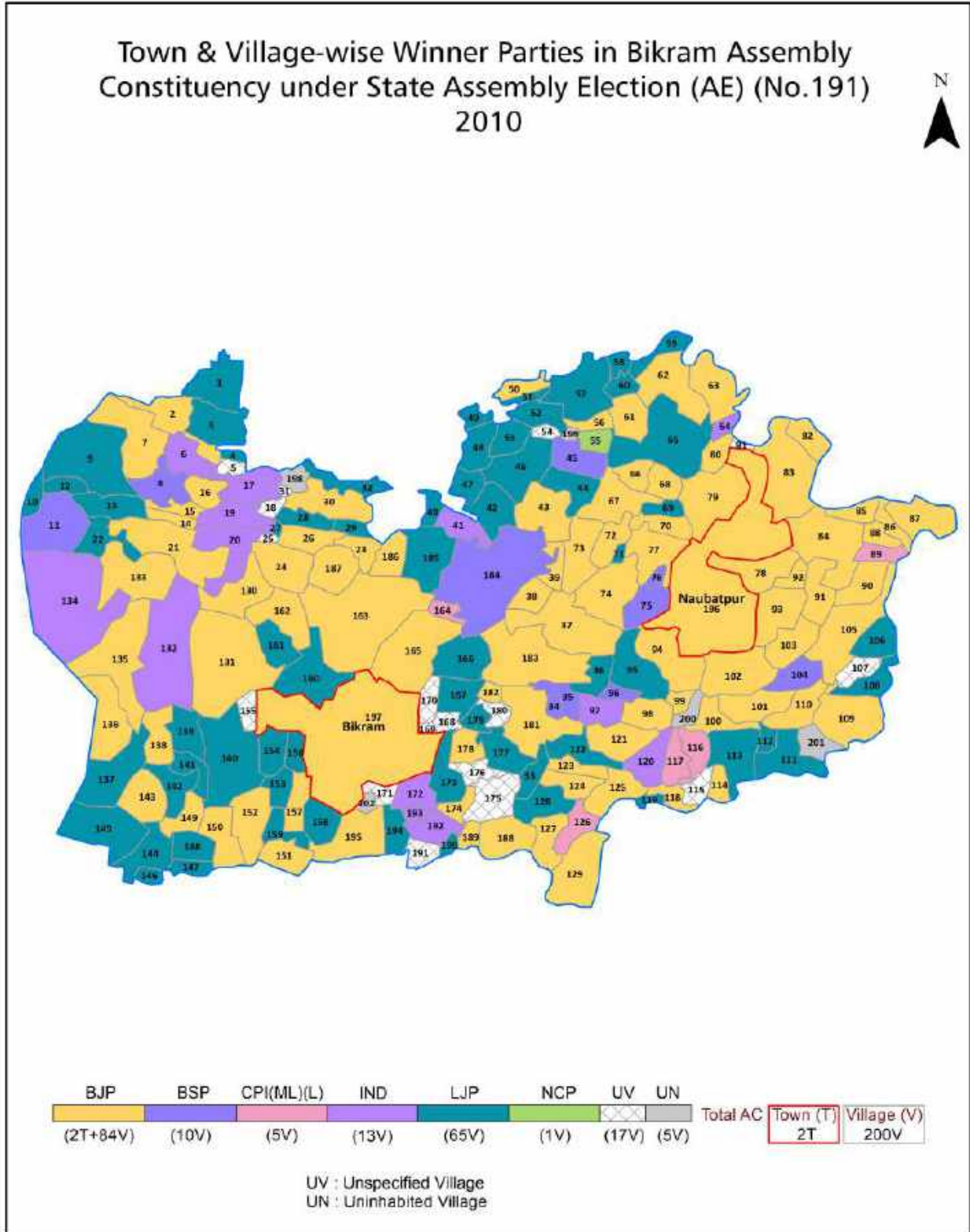
© Datanet India Pvt. Ltd.

All rights reserved. No part of this book may be reproduced, stored in a retrieval system or transmitted in any form or by any means, mechanical photocopying, photographing, scanning, recording or otherwise without the prior written permission of the publisher. Please refer to Disclaimer at page no. 202 for the use of this publication.

Printed in India

No.	Particulars	Page No.
	Introduction	
1	Assembly Constituency - (Vidhan Sabha) at a Glance Features of Assembly as per Delimitation Commission of India (2008)	1-2
	Location and Political Maps	
2	Location Map Boundaries of Assembly Constituency - (Vidhan Sabha) in District Boundaries of Assembly Constituency under Parliamentary Constituency - (Lok Sabha) Town & Village-wise Winner Parties- 2024, 2015, 2014, 2010 and 2009	3-11
	Administrative Setup (2011)	
3	District Sub-district Towns Villages Inhabited Villages Uninhabited Villages Village Panchayat Intermediate Panchayat	10-20
	Demographics (2011)	
4	Population Households Rural/Urban Population Towns and Villages by Population Size Sex Ratio (Total & 0-6 Years) Religious Population Social Population Literacy Rate	21-22
	Electoral Features	
5	Important Dates of Last Elections Held Electors by Gender Service Electors Voters Voters Turnout Polling Stations & Average Number of Electors per Polling Station Electors by Age Group Present Elected Representatives	23-28
	Historical Summary Election Results	
6	Vote Share of Major Parties Winning Margin (Number & Percentage Polarity of Parties Summary Result of Assembly Segment of Parliamentary Elections 2024, 2019, 2014, 2009, 2004 and 1999 Summary Result of Assembly Elections 2020, 2015, 2010, 2005 (Oct), 2005 (Feb), 2000, 1995, 1990, 1985, 1980, 1977, 1972, 1969, 1967, 1962 and 1957	29-54
	Polling Station Level Election Results	
7	Name and Number of Polling Station 2024, 2015, 2014, 2010 & 2009 Polling Station-wise Electors, Voters & Voters Turnout 2024, 2015, 2014, 2010 & 2009 Polling Station wise Elections Results 2024, 2015, 2014, 2010 & 2009	55-181
	Share of Assembly Constituency	
8	Share of Assembly Constituency - (Vidhan Sabha) in State, District and Parliamentary Constituency - (Lok Sabha)	182
	Socio-Economic Amenities (2011)	
9	Access to Administrative Units Agricultural, Manufacturing and Industrial Commodities Demographic Indicators Education Health & Manpower Drinking Water Supply Sanitation Entertainment and Recreations Infrastructure Power Food Allocation Distribution and Marketing of Agriculture Commodities Infrastructure Transport and Road Infrastructure Communication Banking and Financial Services Land Use Irrigation Source	184-198
10	Abbreviation & Sources	199-201
11	Disclaimer	202

Location & Political Map



Administrative Setup

List of Village Panchayat & Intermediate Panchayat (Block) Name - 2011

Village Name	Village Panchayat Name	Intermediate Panchayat Name
Abgilla	Chak Chichaul	Naubatpur
Adampur	Jaitipur	Naubatpur
Adampur Piprawan	Jaitipur	Naubatpur
Adla	Adla	Naubatpur
Ahuara	Deora	Naubatpur
Ajawan	Ajawan	Naubatpur
Akbarpur	Sabar Chak	Naubatpur
Akhtiarpur	Taranagar	Bihta
Akhtiarpur	Akhtyarpur – Manjhauli	Bikram
Alawalpur	Deora	Naubatpur
Alipur	Faridpur	Naubatpur
Amwa	Mahjpura	Bikram
Anharipur	Haibaspur – Gona	Bikram
Arap	Mahjpura	Bikram
Babhan lai	Machhalpurlai	Bihta
Babupur	Gonawan	Naubatpur
Badipur	Chiraura	Naubatpur
Baghakol	Naghar	Bikram
Bahuara	Deora	Naubatpur
Baigawan	Benibigha	Bikram
Bajan chak	Deora	Naubatpur
Bakua	Deora	Naubatpur
Baliari	Moriyanwa	Bikram
Baliari	Danada Katri	Bikram
Bara	Bara	Naubatpur
Bara	Benibigha	Bikram
Barah	Barah	Bikram
Barda	Haibaspur – Gona	Bikram
Barkhurdar Chak	Deora	Naubatpur

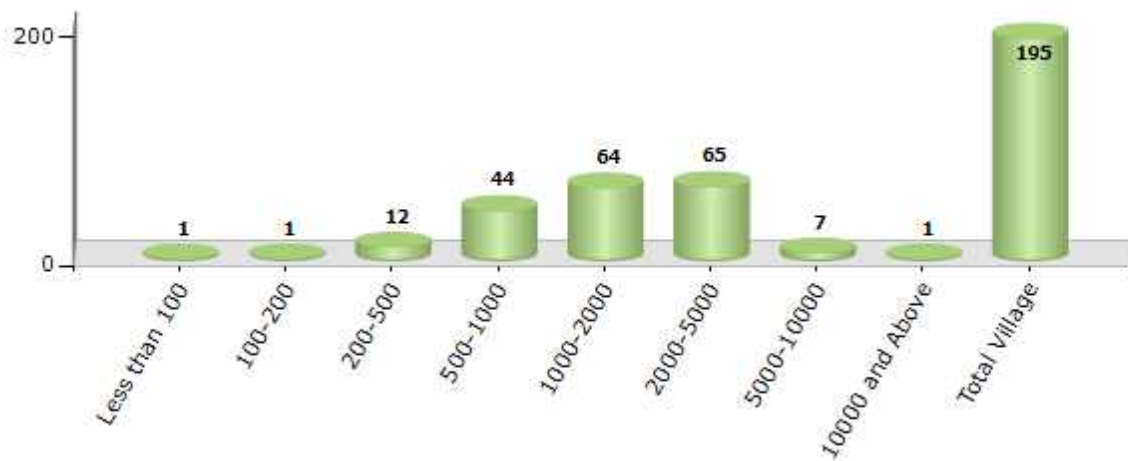
Contd....

Demographics

Number of Villages by Population Size - 2011

Less than 100	100-200	200-500	500-1000	1000-2000	2000-5000	5000-10000	10000 and Above	Total Village
1	1	12	44	64	65	7	1	195

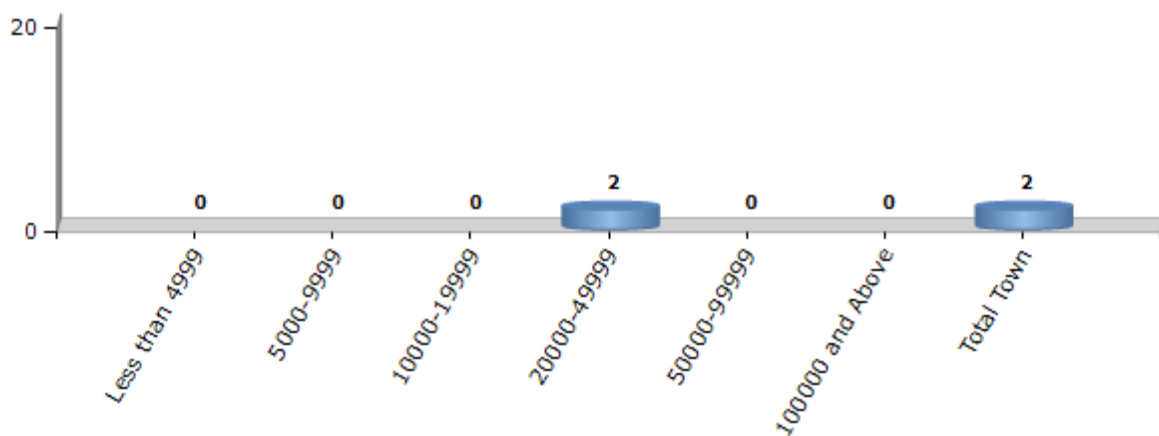
Number of Villages by Population Size - 2011



Number of Towns by Population Size - 2011

Less than 4999	5000-9999	10000-19999	20000-49999	50000-99999	100000 and Above	Total Town
0	0	0	2	0	0	2

Number of Towns by Population Size - 2011

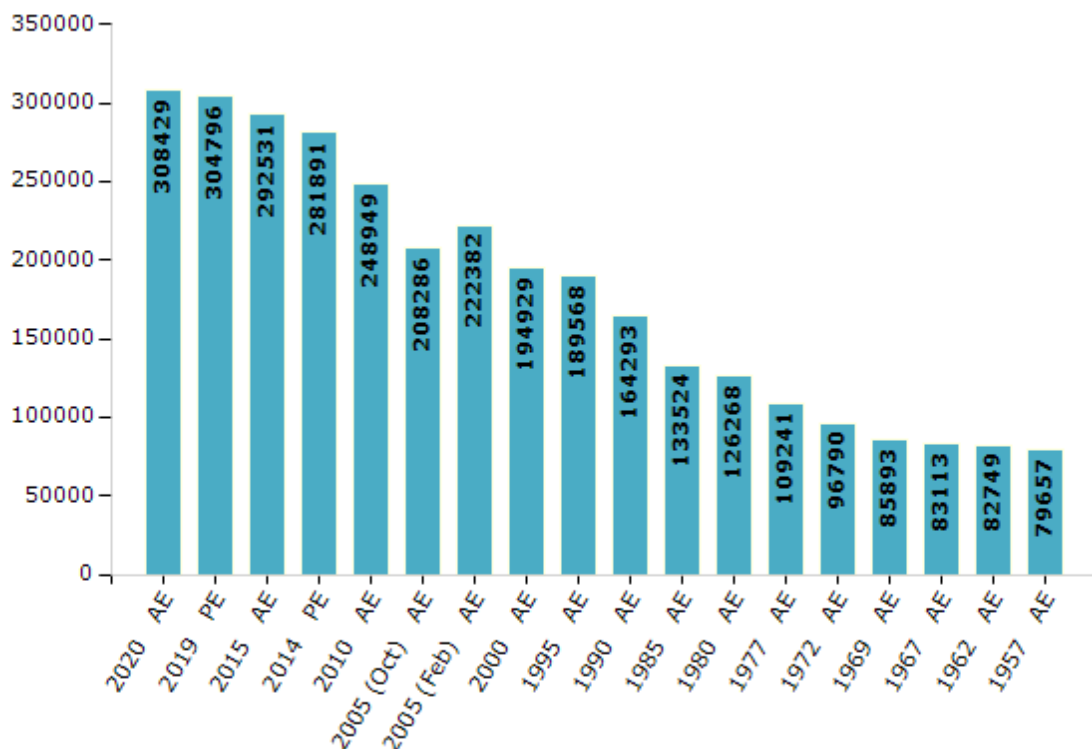


Electoral Features

Electors by Male & Female

Year	Male	Female	Others	Total	Year	Male	Female	Others	Total
2020 AE	160444	147972	13	308429	1995 AE	101242	88326	-	189568
2019 PE	158311	146471	14	304796	1990 AE	87746	76547	-	164293
2015 AE	155451	137071	9	292531	1985 AE	70855	62669	-	133524
2014 PE	150023	131863	5	281891	1980 AE	75803	50465	-	126268
2010 AE	133143	115806	0	248949	1977 AE	55885	53356	-	109241
2009 PE	-	-	-	-	1972 AE	50329	46461	-	96790
2005 (Oct) AE	111307	96979	-	208286	1969 AE	45622	40271	-	85893
2005 (Feb) AE	116164	106218	-	222382	1967 AE	-	-	-	83113
2004 PE	-	-	-	-	1962 AE	-	-	-	82749
2000 AE	107809	87120	-	194929	1957 AE	-	-	-	79657
1999 PE	-	-	-	-	1952 AE	-	-	-	-

Number of Electors



Note : AE : Assembly Election, PE : Assembly Segment of Parliamentary Election

Historical Summary Election Results

Summary Result of Assembly Election - 2015

Candidate Name	Party	Votes	Votes %
Siddharth	INC	94088	54.44
Anil Kumar	BJP	49777	28.8
Devendra Verma	CPI(ML)(L)	4667	2.7
Raj Kumar Yadav	CPI	3497	2.02
Shambhu Prasad Sharma	HVD	2496	1.44
Niraj Kumar	IND	2495	1.44
Nagendra Kumar	SASAPT	2229	1.29
Munna Prasad	BSP	1976	1.14
Jitendra Paswan	SP	1933	1.12
Ramesh Kumar Sharma	IND	1746	1.01
Surendra Yadav	JAPL	1542	0.89
Vajrang Pratap Keshri	RSMD	950	0.55
Dilip Kumar	IND	690	0.4
Laliteshwar Kumar	BBC	538	0.31
Ranjan Chaudhary	SKLP	509	0.29
Shatrudhan Sah	IND	464	0.27
Bindeshwar Prasad	PMS	428	0.25
Santosh Kumar	IND	353	0.2
Parmanand Verma	LAD	346	0.2
	NOTA	2114	1.22

Polling Station Level Election Results

Number and Name of Polling Stations (PS) (2015)

Number of Polling Stations	Name of Polling Stations	Number of Polling Stations	Name of Polling Stations
1	Madhya Vidyalay Pali Utari Bhag	22	Prathamik Vidyalay Koni Tola
2	Madhya Vidyalay Pali Dakshin Bhag	23	Madhya Vidyalay Kunjwan
3	Madhya Vidyalay Kaudiya	24	Prathamik Vidyalay Kaliganj
4	Prathamik Vidyalay Rahatganj	25	Prathamik Vidyalay Natthupur
5	Utkarmit Madhya Vidyalay Doghada Purab Bhag	26	Utkarmit Madhya Vidyalay Ramtari
6	Utkarmit Madhya Vidyalay Doghada Pashchim Bhag	27	Prathamik Vidyalay Nagar Bihta Chainpura
7	Utkarmit Madhya Vidyalay Itava	28	Harijan Samudayik Bhavan Ramtari
8	Madhya Vidyalay Bindaul (Uttar Bhag)	29	Utkarmit Madhya Vidyalay Mithapur
9	Madhya Vidyalay Bindaul Dakshin Bhag	30	Urdu Madhya Vidyalay Muslim Raghapur
10	Utkarmit Madhya Vidyalay Taregana Dhurwis Tola	31	Prathamik Vidyalay Molahimpur
11	Prathamik Vidyalay Pandechak	32	Madhya Vidyalay Padari (Pashchimi Bhag)
12	Prathamik Vidyalay Mahuar	33	Madhya Vidyalay Padari (Purwi Bhag)
13	Prathamik Vidyalay Ghodatap	34	Madhya Vidyalay Yamunapur
14	Utkarmit Madhya Vidyalay Kelhanpur	35	Utkarmit Madhya Vidyalay Dihri
15	Uchcha Vidyalay Lai (Pashchim Bhag)	36	Utkarmit Madhya Vidyalay Sikandarpur
16	Uchcha Vidyalay Machahalapur Lai (Uttari Bhag)	37	Madhya Vidyalay Sikariya
17	Madhya Vidyalay Lai	38	Prathamik Vidyalay Taranagar
18	Prathamik Vidyalay Madhusudanpur	39	Prathamik Vidyalay Taravan
19	Samudayik Bhawan Babhanlai	40	Samudayik Bhawan Akhtiyarpur
20	Prathamik Vidyalay Babhanlai	41	Utkramit Madhya Vidyalaya Nisarapura Uttari Bhag
21	Samudayik Bhavan Kunjwan	42	Utkramit Madhya Vidyalaya Nisarapura Dakshini Bhag

Contd....

Polling Station Level Election Results

Polling Station-wise Votes Secured by Overall Top Five Parties in Bikram Assembly in Assembly Election (AE) under Pataliputra Parliamentary Constituency in Bihar (2015)

Number of Polling Station	Winner - Siddharth (INC)	Runner-up - Anil Kumar (BJP)	3rd - Devendra Verma (CPI(ML) (L))	4th - Raj Kumar Yadav (CPI)	5th - Shambhu Prasad Sharma (HVD)	NOTA	Other	Total Votes Secured
36	165	200	2	5	4	7	38	421
37	298	282	54	4	22	10	47	717
38	549	126	5	12	17	9	57	775
39	266	9	9	4	7	6	22	323
40	376	139	1	8	8	15	56	603
41	244	158	3	25	11	4	53	498
42	175	363	3	17	6	3	51	618
43	301	332	5	11	12	20	73	754
44	301	234	4	2	16	7	67	631
45	317	54	1	14	10	8	30	434
46	275	307	3	9	10	7	53	664
47	200	159	1	5	11	6	52	434
48	315	75	9	14	22	18	109	562
49	344	63	3	19	14	18	49	510
50	317	24	0	5	3	1	11	361
51	104	113	8	1	11	1	30	268
52	266	43	0	6	5	1	24	345
53	196	314	0	2	2	5	26	545
54	347	204	1	13	12	9	46	632
55	370	77	7	6	9	3	58	530
56	420	63	3	11	25	10	66	598
57	391	187	11	16	19	30	94	748
58	133	240	0	1	5	2	21	402
59	374	92	1	7	12	7	50	543
60	100	112	1	1	4	1	17	236
61	317	133	3	9	8	4	16	490
62	403	188	11	16	8	8	167	801
63	149	37	3	6	1	5	24	225
64	146	209	6	4	1	4	11	381
65	421	117	32	21	16	18	134	759
66	343	283	1	12	10	5	34	688
67	71	105	1	4	5	2	19	207
68	396	262	2	17	13	6	96	792
69	376	273	3	7	5	8	28	700
70	182	108	1	0	2	2	6	301

Contd....

Polling Station Level Election Results

Winner, Runner-up and 3rd Party Position & Winning Margin According to Polling Stations in Bikram Assembly in Assembly Election (AE) under Patliputra Parliamentary Constituency in Bihar (2015)

Polling Station Number	Winner Party	Winner Votes (%)	Runner-up Party	Runner-up Votes (%)	Winning Margin Votes (%)	Third Party	Third Party Votes (%)	Other Votes (%)
71	INC	290 (51.33)	BJP	183 (32.39)	107 (18.94)	CPI(ML)(L)	25 (4.42)	67 (11.86)
72	INC	286 (51.16)	BJP	163 (29.16)	123 (22)	CPI(ML)(L)	30 (5.37)	80 (14.31)
73	BJP	259 (40.53)	INC	221 (34.59)	38 (5.94)	IND (NK)	27 (4.23)	132 (20.66)
74	INC	248 (55.86)	BJP	157 (35.36)	91 (20.5)	CPI	7 (1.58)	32 (7.21)
75	BJP	249 (50.92)	INC	201 (41.1)	48 (9.82)	CPI	7 (1.43)	32 (6.54)
76	INC	333 (60.44)	BJP	115 (20.87)	218 (39.57)	BBC	15 (2.72)	88 (15.97)
77	INC	234 (38.42)	BJP	208 (34.15)	26 (4.27)	CPI(ML)(L)	45 (7.39)	122 (20.03)
78	INC	286 (64.41)	BJP	83 (18.69)	203 (45.72)	CPI(ML)(L)	14 (3.15)	61 (13.74)
79	INC	372 (63.16)	BJP	152 (25.81)	220 (37.35)	HVD	16 (2.72)	49 (8.32)
80	INC	470 (63.95)	BJP	175 (23.81)	295 (40.14)	HVD	15 (2.04)	75 (10.2)
81	BJP	317 (42.95)	INC	296 (40.11)	21 (2.84)	IND (RKS)	20 (2.71)	105 (14.23)
82	INC	370 (52.56)	BJP	262 (37.22)	108 (15.34)	CPI	10 (1.42)	62 (8.81)
83	INC	420 (51.28)	BJP	246 (30.04)	174 (21.24)	CPI(ML)(L)	80 (9.77)	73 (8.91)
84	INC	430 (56.8)	BJP	112 (14.8)	318 (42)	CPI(ML)(L)	84 (11.1)	131 (17.31)
85	INC	360 (52.63)	BJP	247 (36.11)	113 (16.52)	CPI	11 (1.61)	66 (9.65)
86	BJP	237 (63.37)	INC	124 (33.16)	113 (30.21)	BSP	5 (1.34)	8 (2.14)
87	INC	185 (45.91)	BJP	177 (43.92)	8 (1.99)	HVD	6 (1.49)	35 (8.68)
88	BJP	239 (50.32)	INC	211 (44.42)	28 (5.9)	IND (RKS)	13 (2.74)	12 (2.53)
89	INC	367 (64.84)	BJP	67 (11.84)	300 (53)	CPI(ML)(L)	36 (6.36)	96 (16.96)
90	INC	410 (73.74)	BJP	98 (17.63)	312 (56.11)	HVD	14 (2.52)	34 (6.12)
91	INC	620 (76.83)	BJP	71 (8.8)	549 (68.03)	JAPL	21 (2.6)	95 (11.77)
92	INC	246 (64.4)	BJP	69 (18.06)	177 (46.34)	HVD	13 (3.4)	54 (14.14)
93	BJP	338 (49.56)	INC	287 (42.08)	51 (7.48)	CPI	14 (2.05)	43 (6.3)
94	INC	423 (56.7)	BJP	198 (26.54)	225 (30.16)	CPI	25 (3.35)	100 (13.4)
95	INC	265 (57.36)	BJP	136 (29.44)	129 (27.92)	CPI	12 (2.6)	49 (10.61)
96	INC	202 (76.81)	BJP	39 (14.83)	163 (61.98)	SP	5 (1.9)	17 (6.46)
97	INC	312 (47.56)	BJP	241 (36.74)	71 (10.82)	IND (NK)	21 (3.2)	82 (12.5)
98	INC	378 (44.95)	BJP	362 (43.04)	16 (1.91)	CPI	26 (3.09)	75 (8.92)
99	BJP	211 (41.95)	INC	176 (34.99)	35 (6.96)	CPI(ML)(L)	36 (7.16)	80 (15.9)
100	INC	397 (50.83)	BJP	272 (34.83)	125 (16)	CPI(ML)(L)	28 (3.59)	84 (10.76)
101	INC	421 (54.39)	BJP	246 (31.78)	175 (22.61)	CPI	25 (3.23)	82 (10.59)
102	INC	254 (47.21)	BJP	210 (39.03)	44 (8.18)	IND (RKS)	16 (2.97)	58 (10.78)
103	INC	236 (50.32)	BJP	190 (40.51)	46 (9.81)	IND (RKS)	6 (1.28)	37 (7.89)
104	JAPL	169 (75.11)	INC	34 (15.11)	135 (60)	CPI	4 (1.78)	18 (8)
105	INC	339 (51.44)	BJP	239 (36.27)	100 (15.17)	HVD	15 (2.28)	66 (10.02)

Contd....

Socio-Economic Amenities - Rural

Access to Education Facilities

Particulars	Number of Villages (% of Population)				
	Available	Not Available	If Not Available (Distance of Nearest Facility)		
			A	B	C
Govt. Primary School	184 (95)	11 (5)	10 (5)	1 (0)	0 (0)
Private Primary School	9 (5)	186 (95)	0 (0)	0 (0)	0 (0)
Govt. Middle School	184 (95)	11 (5)	6 (2)	5 (3)	0 (0)
Private Middle School	9 (5)	186 (95)	0 (0)	0 (0)	0 (0)
Govt. Secondary School	184 (95)	11 (5)	4 (2)	5 (2)	0 (0)
Private Secondary School	31 (25)	164 (75)	0 (0)	0 (0)	0 (0)
Govt. Senior Secondary School	18 (17)	177 (83)	34 (14)	106 (47)	33 (17)
Private Senior Secondary School	12 (17)	183 (83)	0 (0)	0 (0)	0 (0)
Govt. Arts and Science Degree College	1 (3)	194 (97)	10 (4)	83 (37)	101 (56)
Private Arts and Science Degree College	0 (0)	195 (100)	0 (0)	0 (0)	0 (0)
Govt. Engineering College	0 (0)	195 (100)	0 (0)	0 (0)	0 (0)
Private Engineering College	0 (0)	195 (100)	0 (0)	0 (0)	195 (100)
Govt. Medicine College	0 (0)	195 (100)	0 (0)	0 (0)	195 (100)
Private Medicine College	0 (0)	195 (100)	0 (0)	0 (0)	0 (0)
Govt. Management Institute	0 (0)	195 (100)	0 (0)	0 (0)	195 (100)
Private Management Institute	0 (0)	195 (100)	0 (0)	0 (0)	0 (0)
Govt. Polytechnic	0 (0)	195 (100)	0 (0)	0 (0)	195 (100)
Private Polytechnic	0 (0)	195 (100)	0 (0)	0 (0)	0 (0)
Govt. Vocational Training School/ITI	0 (0)	195 (100)	0 (0)	0 (0)	187 (95)
Private Vocational Training School/ITI	0 (0)	195 (100)	0 (0)	1 (1)	7 (4)
Govt. Non Formal Training Centre	0 (0)	195 (100)	0 (0)	0 (0)	195 (100)
Private Non Formal Training Centre	0 (0)	195 (100)	0 (0)	0 (0)	0 (0)
Govt. School For Disabled	0 (0)	195 (100)	0 (0)	0 (0)	195 (100)
Private School For Disabled	0 (0)	195 (100)	0 (0)	0 (0)	0 (0)
Government Others	0 (0)	195 (100)	0 (0)	0 (0)	195 (100)
Private Others	0 (0)	195 (100)	0 (0)	0 (0)	0 (0)

Note : Distance A : Less than 5 km; B : Between 5-10 km; C : 10+ km.; Source : Data Analysis is based on 2011 Census.

DISCLAIMER

The Terms of Use and Disclaimer of Datanet India Private Limited (hereinafter referred to as "Datanet") for use of this analysis report of **Bikram Assembly Constituency (Bikram Vidhan Sabha)** :-

1. **Assembly Factbook™** is a Registered Trade Mark owned by Datanet.
2. All the maps are sketched and graphical representation only and have not been drawn to the scale and also not to represent the actual geographical area or boundary of the unit.
3. The data for the aforesaid analysis is based on authentic sources and has been culled from the various publications of Census, CSO and NSSO for district and block level data, various central and state government departments, Central & State Elections Commissions and the concerned Returning Officers' releases, Electoral Rolls, Election results and allied publications, internal assessment, surveys, estimates and analysis. Therefore, certain adjustment of data at micro level may have been done to arrive closer to the macro data.
4. Data have been provided on an "As Is" and "As AVAILABLE" basis
5. The colours shown in the maps or diagram and charts of a particular party, alliance or AC are indicative and do not represent them.
6. This publication which includes maps, sheets, graphs and data would be the property under copyright of Datanet only. The user may use these for its internal study, analysis and research purposes. It's public display, re-selling or any commercial uses by the user are not allowed.
7. Datanet has taken due care and caution in compilation and processing of data and allied information, but does not guarantee the accuracy, adequacy or completeness of any information/analysis and will be not responsible for any errors or omissions or for the results obtained from the use of such information/analysis.
8. All the contents for the publication have been culled from various authentic sources and Datanet reasonably believes such sources to be reliable, but does not make any representations, express or implied as to the accuracy or fitness of use of such information. The information or contents of the information/analysis do not constitute advice and should not be relied upon in making (or refraining from making) any decision. Any reliance placed upon the information provided by Datanet is the sole responsibility and strictly at the user's risk.
9. In no event will Datanet be liable for any damages (including, without limitation, damages for loss of business projects, or loss of profits) arising in contract, tort or otherwise from the use of or inability to use any of its contents, or from any action taken (or refrained from being taken) as a result of using the analysis or any of its contents. Datanet its directors, owners, editors, officials, employees, distributor and agents or any associate will not be liable for any errors in the information contained or any consequences arising from the use of the contents of the provided information/analysis.
10. If any provision of these terms and conditions is held invalid or illegal or unenforceable for any reason by any court of competent jurisdiction, such provision shall be severed and the remainder of provisions of the terms and conditions shall continue in full force and effect as if the Term of Use had been executed with the invalid, illegal or unenforceable provision eliminated.
11. If there are any discrepancies in the information provided, please bring it to attention of Datanet for suitable rectification measures.

Buy Online This Complete Book At
Datanet India eBooks Store

www.indiastatpublications.com

or go directly at

[http://www.indiastatpublications.com/
Assembly_factbook/Bihar/Pataliputra/ Bikram](http://www.indiastatpublications.com/Assembly_factbook/Bihar/Pataliputra/Bikram)

 **india**stat**elections**

ISBN : 978-93-5313-060-2

