



Bihar

# Assembly Factbook™

Paliganj Assembly Constituency



Key Electoral Data of Paliganj  
Assembly Constituency (Vidhan Sabha)

Bihar

# Assembly Factbook™

Paliganj Assembly Constituency



Paliganj Vidhan Sabha

## **Editor & Director**

Dr. R.K. Thukral

## **Research Editor**

Dr. Shafeeq Rahman

## **Compiled, Researched and Published by Datanet India Pvt. Ltd.**

D-100, 1st Floor,

Okhla Industrial Area, Phase-I,  
New Delhi- 110020.

Ph.: 91-11- 43580781-84

Email : support@indiastatpublications.com

Website : www.indiastatelections.com

## **Online Book Store :**

www.indiastatpublications.com

**Report No. :** AFB/BR-190-0125

**ISBN :** 978-93-5313-153-1

**First Edition :** January, 2018

**Eighth Updated Edition :** January, 2025

**Price :** Rs. 11500/-

US\$ 310

**© Datanet India Pvt. Ltd.**

All rights reserved. No part of this book may be reproduced, stored in a retrieval system or transmitted in any form or by any means, mechanical photocopying, photographing, scanning, recording or otherwise without the prior written permission of the publisher. Please refer to Disclaimer at page no. 229 for the use of this publication.

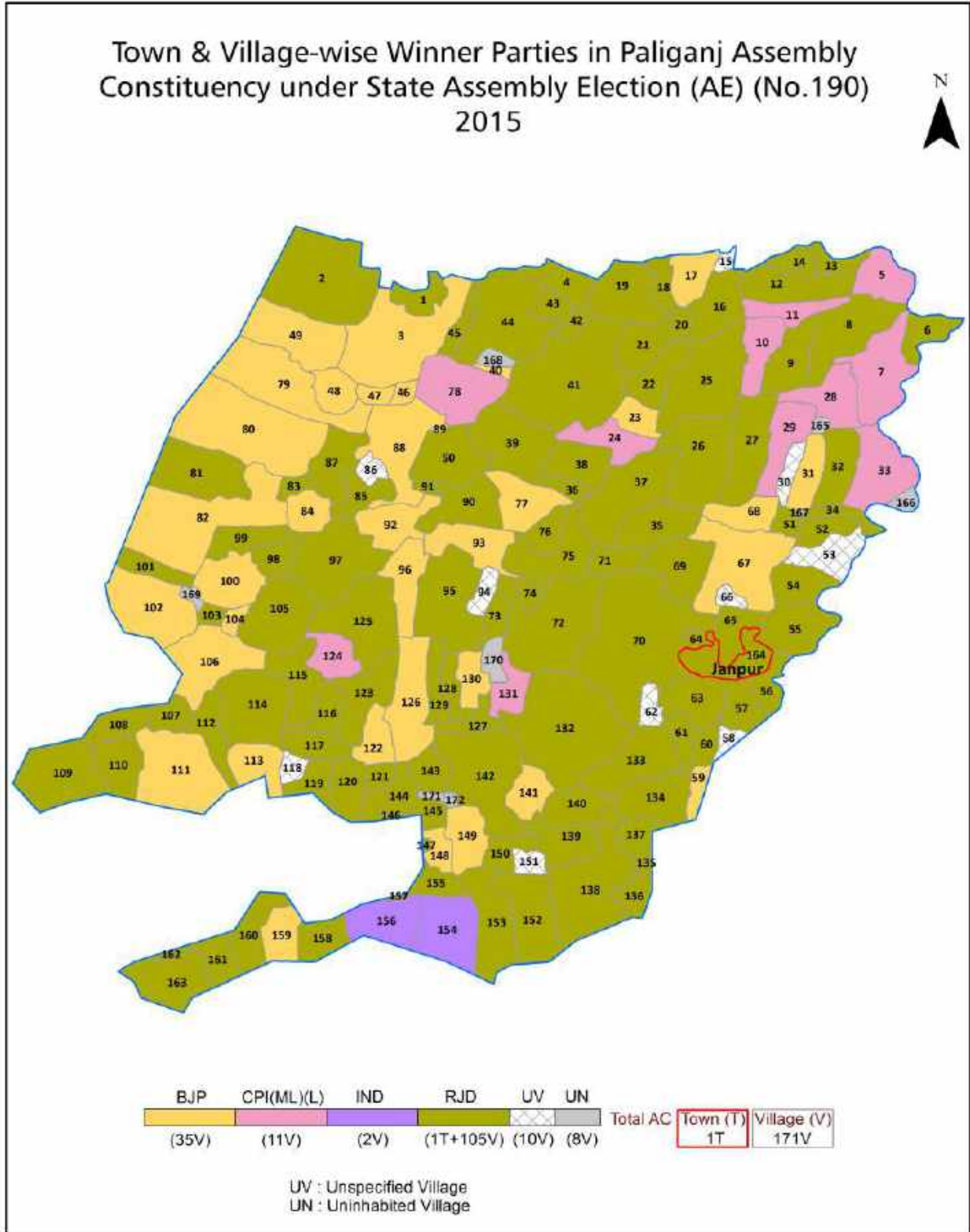
Printed in India

# Contents

No.	Particulars	Page No.
	<b>Introduction</b>	
1	Assembly Constituency - (Vidhan Sabha) at a Glance   Features of Assembly as per Delimitation Commission of India (2008)	1-2
	<b>Location and Political Maps</b>	
2	Location Map   Boundaries of Assembly Constituency - (Vidhan Sabha) in District   Boundaries of Assembly Constituency under Parliamentary Constituency - (Lok Sabha)   Town & Village-wise Winner Parties- 2024, 2020, 2015, 2014, 2010 and 2009	3-11
	<b>Administrative Setup (2011)</b>	
3	District   Sub-district   Towns   Villages   Inhabited Villages   Uninhabited Villages   Village Panchayat   Intermediate Panchayat	11-19
	<b>Demographics (2011)</b>	
4	Population   Households   Rural/Urban Population   Towns and Villages by Population Size   Sex Ratio (Total & 0-6 Years)   Religious Population   Social Population   Literacy Rate	20-21
	<b>Electoral Features</b>	
5	Important Dates of Last Elections Held   Electors by Gender   Service Electors   Voters   Voters Turnout   Polling Stations & Average Number of Electors per Polling Station   Electors by Age Group   Present Elected Representatives	22-27
	<b>Historical Summary Election Results</b>	
6	Vote Share of Major Parties   Winning Margin (Number & Percentage)   Polarity of Parties   Summary Result of Assembly Segment of Parliamentary Elections 2024, 2019, 2014, 2009, 2004 and 1999   Summary Result of Assembly Elections 2020, 2015, 2010, 2005 (Oct), 2005 (Feb), 2000, 1995, 1990, 1985, 1980, 1977, 1972, 1969, 1967, 1962, 1957 and 1952	28-53
	<b>Polling Station Level Election Results</b>	
7	Name and Number of Polling Station 2024, 2020, 2015, 2014, 2010 and 2009   Polling Station-wise Electors, Voters & Voters Turnout 2024, 2020, 2015, 2014, 2010 and 2009   Polling Station wise Elections Results 2024, 2020, 2015, 2014, 2010 and 2009	54-208
	<b>Share of Assembly Constituency</b>	
8	Share of Assembly Constituency - (Vidhan Sabha) in State, District and Parliamentary Constituency - (Lok Sabha)	209
	<b>Socio-Economic Amenities (2011)</b>	
9	Access to Administrative Units   Agricultural, Manufacturing and Industrial Commodities   Demographic Indicators   Education   Health & Manpower   Drinking Water Supply   Sanitation   Entertainment and Recreations Infrastructure   Power   Food Allocation Distribution and Marketing of Agriculture Commodities Infrastructure   Transport and Road Infrastructure   Communication   Banking and Financial Services   Land Use   Irrigation Source	211-225
10	<b>Abbreviation &amp; Sources</b>	226-228
11	<b>Disclaimer</b>	229



Location & Political Map



## Administrative Setup

### List of Village Panchayat & Intermediate Panchayat (Block) Name - 2011

Village Name	Village Panchayat Name	Intermediate Panchayat Name
Achhua	Achhua Rakasiya	Dulhin Bazar
Ajda	Ajada Sikariya	Paliganj
Akbarpur	Akbarpur Ranipur	Paliganj
Akhtiarpur Pali	Rampur Nagwa	Paliganj
Alipur	Achhua Rakasiya	Dulhin Bazar
Alipur	Bherariya Siyarampur	Paliganj
Amarpura	Ular Sorpur	Dulhin Bazar
Amarpura	Dharahra	Paliganj
Andehri	Rajipur	Dulhin Bazar
Arari	Mudika	Paliganj
Ataulah	Mauri Piyarpur	Paliganj
Baduri	Rajipur	Dulhin Bazar
Bahadurpur	Mauri Piyarpur	Paliganj
Baijalpur	Kab	Dulhin Bazar
Bali Pakar	Dharahra	Paliganj
Banauli Buzurg	Khanpura Taranpur	Paliganj
Banauli Khurd	Khanpura Taranpur	Paliganj
Barka Kharwa	Ular Sorpur	Dulhin Bazar
Baruna	Chikasi	Paliganj
Baruna	Chikasi	Paliganj
Bauwan	Bherariya Siyarampur	Paliganj
Bela	Ajada Sikariya	Paliganj
Bela	Chikasi	Paliganj
Belaunra	Bherariya Siyarampur	Paliganj
Belhauri	Selhauri Belhauri	Dulhin Bazar
Bhadsara	Madsara	Dulhin Bazar
Bhalua	Sadaveh Dorwan	Dulhin Bazar
Bharathpura	Bharatpura	Dulhin Bazar
Bharbhesar	Bharatpura	Dulhin Bazar

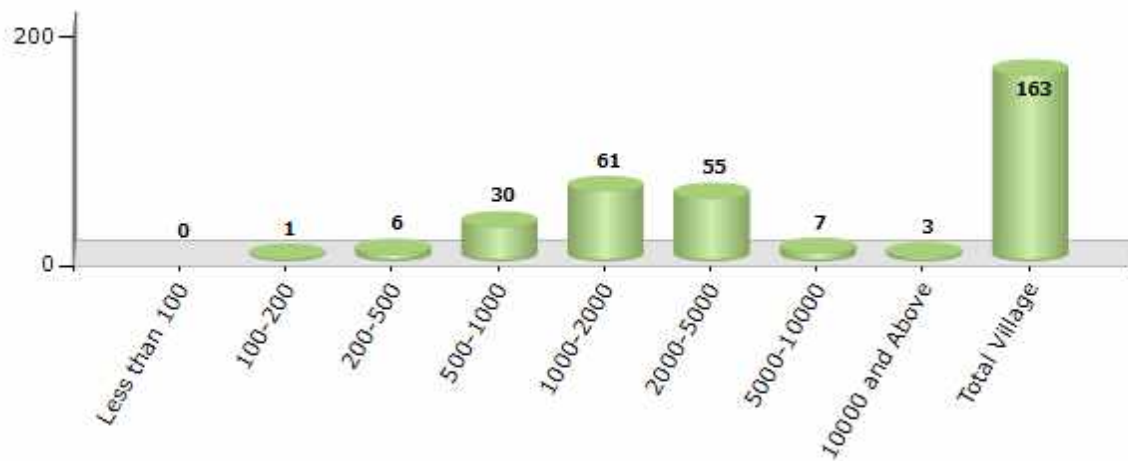
Contd....

Demographics

Number of Villages by Population Size - 2011

Less than 100	100-200	200-500	500-1000	1000-2000	2000-5000	5000-10000	10000 and Above	Total Village
0	1	6	30	61	55	7	3	163

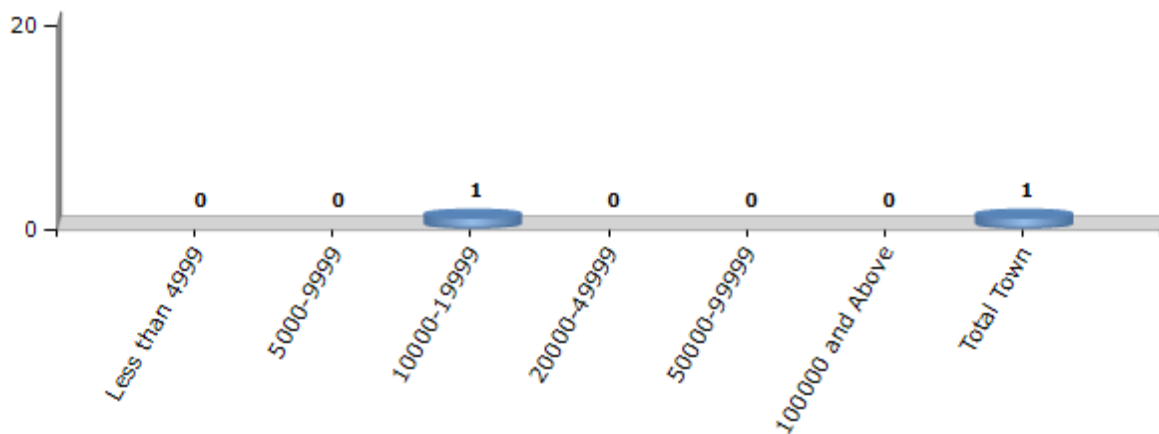
Number of Villages by Population Size - 2011



Number of Towns by Population Size - 2011

Less than 4999	5000-9999	10000-19999	20000-49999	50000-99999	100000 and Above	Total Town
0	0	1	0	0	0	1

Number of Towns by Population Size - 2011

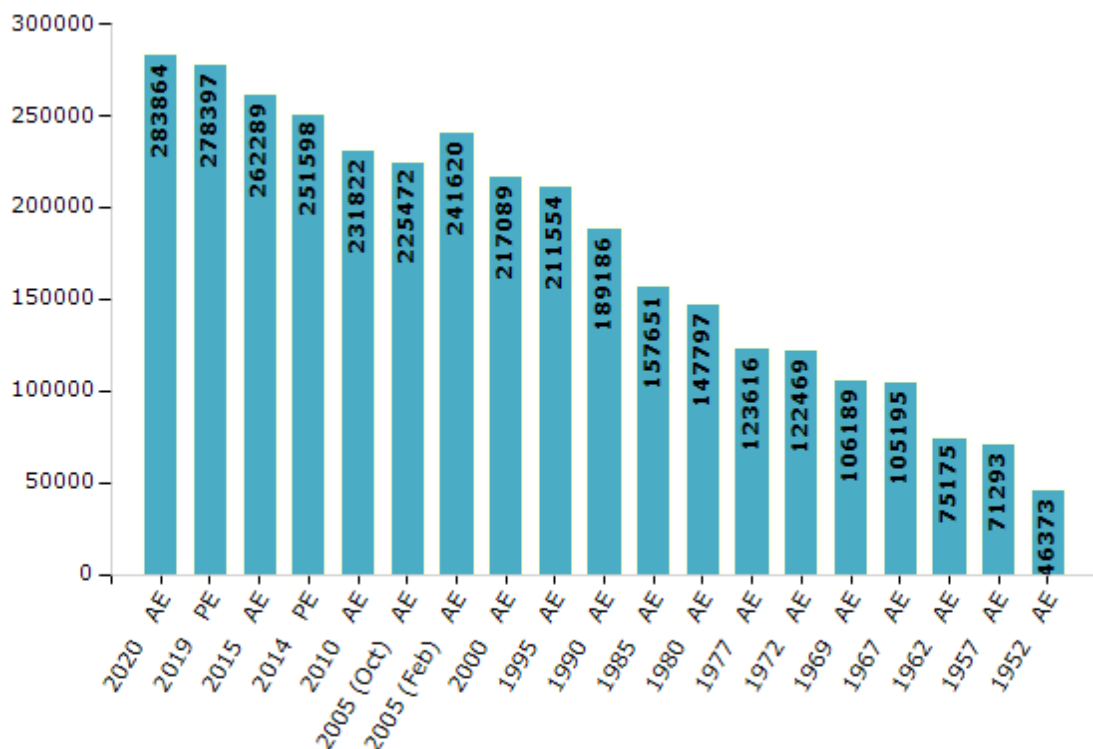


## Electoral Features

### Electors by Male & Female

Year	Male	Female	Others	Total	Year	Male	Female	Others	Total
2020 AE	147306	136552	6	283864	1995 AE	109821	101733	-	211554
2019 PE	144220	134166	11	278397	1990 AE	96801	92385	-	189186
2015 AE	140338	121939	12	262289	1985 AE	82913	74738	-	157651
2014 PE	135007	116582	9	251598	1980 AE	88691	59106	-	147797
2010 AE	123394	108428	0	231822	1977 AE	65579	58037	-	123616
2009 PE	-	-	-	-	1972 AE	61381	61088	-	122469
2005 (Oct) AE	118463	107009	-	225472	1969 AE	56766	49423	-	106189
2005 (Feb) AE	125073	116547	-	241620	1967 AE	-	-	-	105195
2004 PE	-	-	-	-	1962 AE	-	-	-	75175
2000 AE	113533	103556	-	217089	1957 AE	-	-	-	71293
1999 PE	-	-	-	-	1952 AE	-	-	-	46373

Number of Electors



Note : AE : Assembly Election, PE : Assembly Segment of Parliamentary Election

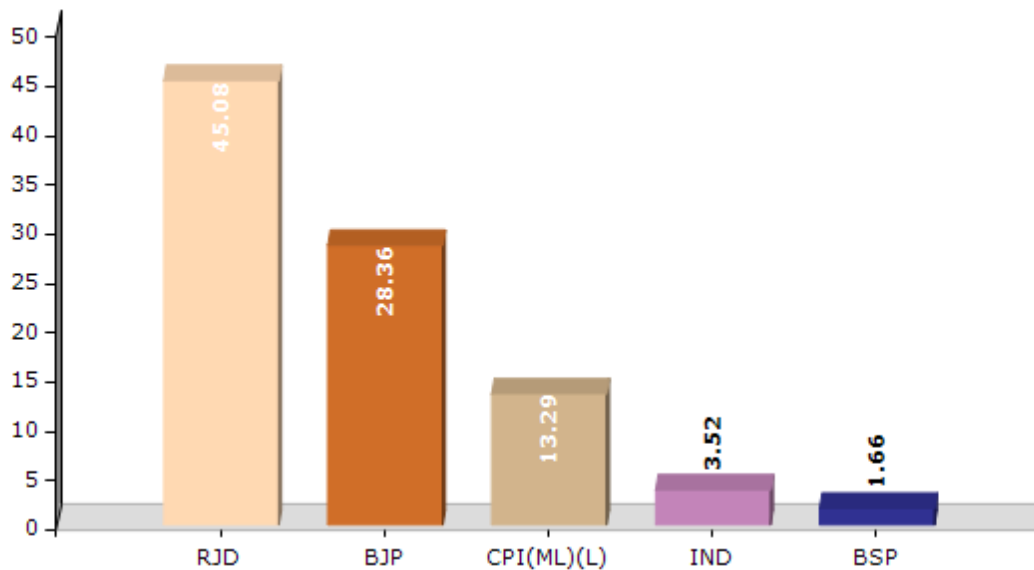


## Historical Summary Election Results

### Summary Result of Assembly Election - 2015

Candidate Name	Party	Votes	Votes %
Jay Vardhan Yadav Alias Bachcha Yadav	RJD	65932	45.08
Ram Janm Sharma	BJP	41479	28.36
Anwar Husain	CPI(ML)(L)	19438	13.29
Chandan Kumar	IND	5145	3.52
Alakh Niranjn Pal	BSP	2424	1.66
Hare Krishn Singh	IND	1947	1.33
Pratibha Jha	IND	1806	1.23
Lakshman Sharma	IND	1628	1.11
Manish Kumar	SHS	1272	0.87
Dhananjay Kumar	LAD	854	0.58
Ajay Kumar	IND	637	0.44
Sunil Sanand	HMSP	446	0.3
Shambhu Kumar Shah	RPP	404	0.28
Mejnarayan Das	SaBP	319	0.22
	NOTA	2524	1.73

Votes Percentage of Top Parties - 2015



## Polling Station Level Election Results

### Number and Name of Polling Stations (PS) (2020)

Number of Polling Stations	Name of Polling Stations	Number of Polling Stations	Name of Polling Stations
1	Sanskrit College Dhana Purab Bhag	18	Utkramit Madhya Vidyalay Rajipur Madhya Bhag
1A	Sanskrit College Dhana Purab Bhag	19	Utkramit Madhya Vidyalay Rajipur Paschim Bhag
2	Sanskrit College Dhana Paschim Bhag	20	Prathmik Vidyalay Madhuban
3	Uttakramit Madhya Vidyalay Nisarapura	21	Prathmik Vidyalay Khapuri
4	Utkramti Madhya Vidyalay Jitan Chhapara	22	Utkramit Madhya Vidyalay Dhrwra Mathiyan
5	Prathmik Vidyalay Chainapura	23	Prathmik Vidyalay Bhaluan
6	Utkramit Madhya Vidyalay Saraiya	24	Prathmik Vidyalay Gulalchak
7	Urdu Prathmik Vidyalay Kab	25	Madhya Vidyalay Sadaveh Purabi Bhag Kamra Sankhya-02
8	Prathmik Vidyalay Baijalapur	25A	Madhya Vidyalay Sadaveh Purabi Bhag Kamra Sankhya-02
9	Madhya Vidyalay Kab Uttari Bhag Kamra Sankhya -02	26	Madhya Vidyalay Sadaveh Paschim Bhag Kamra Sankhya-02
9A	Madhya Vidyalay Kab Uttari Bhag Kamra Sankhya -02	26A	Madhya Vidyalay Sadaveh Paschim Bhag Kamra Sankhya-02
10	Madhya Vidyalay Kab Dakshin Bhag Kamra Sankhya -01	27	Madhya Vidyalay Sadaveh Madhya Bhag
10A	Madhya Vidyalay Kab Dakshin Bhag Kamra Sankhya -01	27A	Madhya Vidyalay Sadaveh Madhya Bhag
11	Prathmik Vidyalay Kab Purabi Bhag	28	Prathmik Vidyalay Dorarwa
11A	Prathmik Vidyalay Kab Purabi Bhag	29	Prathmik Vidyalay Dharamachak
12	Prathmik Vidyalay Saradha Chhapara	30	Madhya Vidyalay Lala Bhadasara Pashchimi Bhag
13	Samudayik Bhavan Lathar	31	Madhya Vidyalay Lala Bhadasara Purabi Bhag
14	Madhya Vidyalay Hareramapur	31A	Madhya Vidyalay Lala Bhadasara Purabi Bhag
15	Utkramit Madhya Vidyalay Baduri	32	Madhya Vidyalay Lala Bhadasara Madhya Bhag
16	Prathmik Vidyalay Paipura Khurd	33	Gram Sevika Bhavan Lala Bhadasara
17	Utkramit Madhya Vidyalay Rajipur Purbi Bhag	33A	Gram Sevika Bhavan Lala Bhadasara

Contd....

## Polling Station Level Election Results

### Polling Station-wise Votes Secured by Overall Top Five Parties in Paliganj Assembly in Assembly Election (AE) under Pataliputra Parliamentary Constituency in Bihar (2020)

Number of Polling Station	Winner - Sandeep Saurav (CPI(ML) (L))	Runner-up - Jay Vardhan Yadav @ Bachcha Yadav (JD(U))	3rd - Dr. Usha Vidyarthi (LJP)	4th - Madhu Manjari (RLSP)	5th - Sunil Kumar (IND)	NOTA	Other	Total Votes Secured
29	553	58	4	0	3	2	19	639
30	33	176	97	59	5	4	19	393
31	218	108	32	4	13	10	65	450
31A	270	81	10	10	19	7	35	432
32	278	81	25	1	9	5	65	464
33	120	127	2	68	13	2	28	360
33A	56	212	6	9	23	2	49	357
34	334	59	3	5	14	4	62	481
35	96	106	85	31	1	6	55	380
36	33	126	8	64	1	5	15	252
36A	131	74	43	24	3	13	45	333
37	210	39	0	13	4	4	62	332
37A	89	137	10	6	0	1	19	262
38	110	204	34	41	4	8	84	485
39	319	103	4	15	17	16	59	533
40	499	39	8	16	3	5	51	621
41	126	357	15	14	3	4	31	550
42	174	158	23	17	6	4	35	417
43	246	12	0	2	3	7	28	298
43A	253	40	3	8	6	4	27	341
44	285	93	14	4	6	6	38	446
45	27	131	47	7	2	1	30	245
46	48	173	44	5	5	6	43	324
46A	54	179	24	13	3	3	35	311
47	238	53	23	7	9	7	69	406
47A	207	32	4	3	5	5	39	295
48	270	133	9	27	6	14	101	560
49	153	90	78	9	2	4	42	378
50	172	125	2	4	10	2	23	338
51	122	101	67	7	14	5	123	439
52	350	16	7	9	4	15	70	471
53	166	19	6	4	3	6	41	245
54	297	31	4	2	9	6	32	381
54A	328	39	10	1	5	4	9	396
55	328	22	9	5	4	1	25	394

Contd....

## Polling Station Level Election Results

### Winner, Runner-up and 3rd Party Position & Winning Margin According to Polling Stations in Paliganj Assembly in Assembly Election (AE) under Patliputra Parliamentary Constituency in Bihar (2020)

Polling Station Number	Winner Party	Winner Votes (%)	Runner-up Party	Runner-up Votes (%)	Winning Margin Votes (%)	Third Party	Third Party Votes (%)	Other Votes (%)
56	CPI(ML)(L)	396 (73.2)	JD(U)	62 (11.46)	334 (61.74)	RLSP	17 (3.14)	66 (12.2)
57	CPI(ML)(L)	276 (61.2)	JD(U)	106 (23.5)	170 (37.7)	RLSP	17 (3.77)	52 (11.53)
58	CPI(ML)(L)	341 (63.74)	JD(U)	110 (20.56)	231 (43.18)	LJP	12 (2.24)	72 (13.46)
59	CPI(ML)(L)	338 (65.13)	JD(U)	89 (17.15)	249 (47.98)	RSWD	9 (1.73)	83 (15.99)
60	CPI(ML)(L)	425 (83.83)	LJP	35 (6.9)	390 (76.93)	JD(U)	15 (2.96)	32 (6.31)
61	CPI(ML)(L)	228 (49.46)	JD(U)	164 (35.57)	64 (13.89)	LJP	13 (2.82)	56 (12.15)
62	CPI(ML)(L)	198 (50.51)	JD(U)	94 (23.98)	104 (26.53)	IND (SK)	31 (7.91)	69 (17.6)
63	CPI(ML)(L)	174 (46.28)	JD(U)	69 (18.35)	105 (27.93)	LJP	54 (14.36)	79 (21.01)
64	CPI(ML)(L)	185 (53.62)	JD(U)	77 (22.32)	108 (31.3)	RLSP	31 (8.99)	52 (15.07)
64A	CPI(ML)(L)	211 (58.29)	JD(U)	48 (13.26)	163 (45.03)	RLSP	43 (11.88)	60 (16.57)
65	CPI(ML)(L)	263 (69.39)	JD(U)	38 (10.03)	225 (59.36)	RLSP	25 (6.6)	53 (13.98)
66	JD(U)	140 (59.07)	RLSP	38 (16.03)	102 (43.04)	CPI(ML)(L)	36 (15.19)	23 (9.7)
66A	CPI(ML)(L)	101 (34.95)	JD(U)	79 (27.34)	22 (7.61)	RLSP	40 (13.84)	69 (23.88)
67	CPI(ML)(L)	226 (53.43)	JD(U)	96 (22.7)	130 (30.73)	LJP	28 (6.62)	73 (17.26)
68	CPI(ML)(L)	245 (76.56)	JD(U)	46 (14.38)	199 (62.18)	RLSP	14 (4.38)	15 (4.69)
68A	CPI(ML)(L)	110 (36.07)	JD(U)	73 (23.93)	37 (12.14)	LJP	44 (14.43)	78 (25.57)
69	CPI(ML)(L)	365 (83.33)	JD(U)	24 (5.48)	341 (77.85)	LJP	8 (1.83)	41 (9.36)
69A	CPI(ML)(L)	395 (89.77)	IND (GC)	15 (3.41)	380 (86.36)	JD(U)	12 (2.73)	18 (4.09)
70	CPI(ML)(L)	171 (48.03)	JD(U)	118 (33.15)	53 (14.88)	LJP	29 (8.15)	38 (10.67)
70A	CPI(ML)(L)	186 (63.05)	JD(U)	78 (26.44)	108 (36.61)	LJP	6 (2.03)	25 (8.47)
71	CPI(ML)(L)	274 (86.71)	IND (GC)	18 (5.7)	256 (81.01)	JD(U)	11 (3.48)	13 (4.11)
72	CPI(ML)(L)	180 (46.88)	JD(U)	78 (20.31)	102 (26.57)	LJP	74 (19.27)	52 (13.54)
72A	CPI(ML)(L)	195 (54.78)	JD(U)	65 (18.26)	130 (36.52)	LJP	36 (10.11)	60 (16.85)
73	JD(U)	176 (47.83)	CPI(ML)(L)	86 (23.37)	90 (24.46)	LJP	51 (13.86)	55 (14.95)
73A	JD(U)	136 (38.42)	CPI(ML)(L)	124 (35.03)	12 (3.39)	LJP	30 (8.47)	64 (18.08)
74	JD(U)	143 (45.25)	CPI(ML)(L)	83 (26.27)	60 (18.98)	IND (GC)	32 (10.13)	58 (18.35)
74A	CPI(ML)(L)	212 (45.89)	IND (GC)	94 (20.35)	118 (25.54)	LJP	73 (15.8)	83 (17.97)
75	CPI(ML)(L)	284 (60.3)	JD(U)	74 (15.71)	210 (44.59)	IND (SK)	35 (7.43)	78 (16.56)
76	CPI(ML)(L)	324 (82.23)	JD(U)	33 (8.38)	291 (73.85)	IND (SK)	9 (2.28)	28 (7.11)
77	CPI(ML)(L)	260 (73.24)	JD(U)	41 (11.55)	219 (61.69)	LJP	23 (6.48)	31 (8.73)
77A	CPI(ML)(L)	144 (42.48)	JD(U)	111 (32.74)	33 (9.74)	LJP	27 (7.96)	57 (16.81)
78	CPI(ML)(L)	101 (41.39)	LJP	82 (33.61)	19 (7.78)	JD(U)	26 (10.66)	35 (14.34)
79	CPI(ML)(L)	371 (68.96)	LJP	54 (10.04)	317 (58.92)	JD(U)	31 (5.76)	82 (15.24)
80	LJP	95 (79.83)	JD(U)	7 (5.88)	88 (73.95)	CPI(ML)(L)	3 (2.52)	14 (11.76)
81	CPI(ML)(L)	268 (51.24)	JD(U)	88 (16.83)	180 (34.41)	IND (SK)	65 (12.43)	102 (19.5)

Contd....

**Socio-Economic Amenities - Rural**

**Access to Education Facilities**

Particulars	Number of Villages (% of Population)				
	Available	Not Available	If Not Available (Distance of Nearest Facility)		
			A	B	C
Govt. Primary School	154 (97)	9 (3)	6 (2)	3 (1)	0 (0)
Private Primary School	17 (16)	146 (84)	0 (0)	0 (0)	0 (0)
Govt. Middle School	154 (97)	9 (3)	9 (3)	0 (0)	0 (0)
Private Middle School	12 (13)	151 (87)	0 (0)	0 (0)	0 (0)
Govt. Secondary School	154 (97)	9 (3)	5 (2)	1 (0)	2 (1)
Private Secondary School	12 (12)	151 (88)	1 (0)	0 (0)	0 (0)
Govt. Senior Secondary School	14 (24)	149 (76)	56 (29)	60 (29)	25 (10)
Private Senior Secondary School	15 (27)	148 (73)	1 (1)	2 (1)	0 (0)
Govt. Arts and Science Degree College	2 (2)	161 (98)	6 (8)	15 (8)	106 (59)
Private Arts and Science Degree College	3 (3)	160 (97)	0 (0)	25 (16)	6 (4)
Govt. Engineering College	0 (0)	163 (100)	0 (0)	0 (0)	0 (0)
Private Engineering College	0 (0)	163 (100)	0 (0)	0 (0)	163 (100)
Govt. Medicine College	0 (0)	163 (100)	0 (0)	0 (0)	163 (100)
Private Medicine College	0 (0)	163 (100)	0 (0)	0 (0)	0 (0)
Govt. Management Institute	0 (0)	163 (100)	0 (0)	0 (0)	163 (100)
Private Management Institute	0 (0)	163 (100)	0 (0)	0 (0)	0 (0)
Govt. Polytechnic	0 (0)	163 (100)	0 (0)	0 (0)	163 (100)
Private Polytechnic	0 (0)	163 (100)	0 (0)	0 (0)	0 (0)
Govt. Vocational Training School/ITI	0 (0)	163 (100)	0 (0)	0 (0)	161 (96)
Private Vocational Training School/ITI	2 (4)	161 (96)	0 (0)	0 (0)	0 (0)
Govt. Non Formal Training Centre	0 (0)	163 (100)	0 (0)	0 (0)	163 (100)
Private Non Formal Training Centre	0 (0)	163 (100)	0 (0)	0 (0)	0 (0)
Govt. School For Disabled	0 (0)	163 (100)	0 (0)	0 (0)	163 (100)
Private School For Disabled	0 (0)	163 (100)	0 (0)	0 (0)	0 (0)
Government Others	0 (0)	163 (100)	0 (0)	0 (0)	163 (100)
Private Others	0 (0)	163 (100)	0 (0)	0 (0)	0 (0)

Note : Distance A : Less than 5 km; B : Between 5-10 km; C : 10+ km.; Source : Data Analysis is based on 2011 Census.

## DISCLAIMER

The Terms of Use and Disclaimer of Datanet India Private Limited (hereinafter referred to as "Datanet") for use of this analysis report of **Paliganj Assembly Constituency (Paliganj Vidhan Sabha)** :-

1. **Assembly Factbook™** is a Registered Trade Mark owned by Datanet.
2. All the maps are sketched and graphical representation only and have not been drawn to the scale and also not to represent the actual geographical area or boundary of the unit.
3. The data for the aforesaid analysis is based on authentic sources and has been culled from the various publications of Census, CSO and NSSO for district and block level data, various central and state government departments, Central & State Elections Commissions and the concerned Returning Officers' releases, Electoral Rolls, Election results and allied publications, internal assessment, surveys, estimates and analysis. Therefore, certain adjustment of data at micro level may have been done to arrive closer to the macro data.
4. Data have been provided on an "As Is" and "As AVAILABLE" basis
5. The colours shown in the maps or diagram and charts of a particular party, alliance or AC are indicative and do not represent them.
6. This publication which includes maps, sheets, graphs and data would be the property under copyright of Datanet only. The user may use these for its internal study, analysis and research purposes. It's public display, re-selling or any commercial uses by the user are not allowed.
7. Datanet has taken due care and caution in compilation and processing of data and allied information, but does not guarantee the accuracy, adequacy or completeness of any information/analysis and will be not responsible for any errors or omissions or for the results obtained from the use of such information/analysis.
8. All the contents for the publication have been culled from various authentic sources and Datanet reasonably believes such sources to be reliable, but does not make any representations, express or implied as to the accuracy or fitness of use of such information. The information or contents of the information/analysis do not constitute advice and should not be relied upon in making (or refraining from making) any decision. Any reliance placed upon the information provided by Datanet is the sole responsibility and strictly at the user's risk.
9. In no event will Datanet be liable for any damages (including, without limitation, damages for loss of business projects, or loss of profits) arising in contract, tort or otherwise from the use of or inability to use any of its contents, or from any action taken (or refrained from being taken) as a result of using the analysis or any of its contents. Datanet its directors, owners, editors, officials, employees, distributor and agents or any associate will not be liable for any errors in the information contained or any consequences arising from the use of the contents of the provided information/analysis.
10. If any provision of these terms and conditions is held invalid or illegal or unenforceable for any reason by any court of competent jurisdiction, such provision shall be severed and the remainder of provisions of the terms and conditions shall continue in full force and effect as if the Term of Use had been executed with the invalid, illegal or unenforceable provision eliminated.
11. If there are any discrepancies in the information provided, please bring it to attention of Datanet for suitable rectification measures.



**Buy Online This Complete Book At  
Datanet India eBooks Store**

[www.indiastatpublications.com](http://www.indiastatpublications.com)

or go directly at

[http://www.indiastatpublications.com/  
Assembly\\_factbook/Bihar/Pataliputra/ Paliganj](http://www.indiastatpublications.com/Assembly_factbook/Bihar/Pataliputra/Paliganj)

 **india**stat**elections**

ISBN : 978-93-5313-153-1

