



Bihar

Assembly Factbook™

Dhamdaha Assembly Constituency



Key Electoral Data of Dhamdaha
Assembly Constituency (Vidhan Sabha)

Bihar

Assembly Factbook™

Dhamdaha Assembly Constituency



Dhamdaha Vidhan Sabha

Editor & Director

Dr. R.K. Thukral

Research Editor

Dr. Shafeeq Rahman

Compiled, Researched and Published by Datanet India Pvt. Ltd.

D-100, 1st Floor,

Okhla Industrial Area, Phase-I,
New Delhi- 110020.

Ph.: 91-11- 43580781-84

Email : support@indiastatpublications.com

Website : www.indiastatelections.com

Online Book Store :

www.indiastatpublications.com

Report No. : AFB/BR-061-0125

ISBN : 978-93-5313-075-6

First Edition : January, 2018

Eighth Updated Edition : January, 2025

Price : Rs. 11500/-

US\$ 310

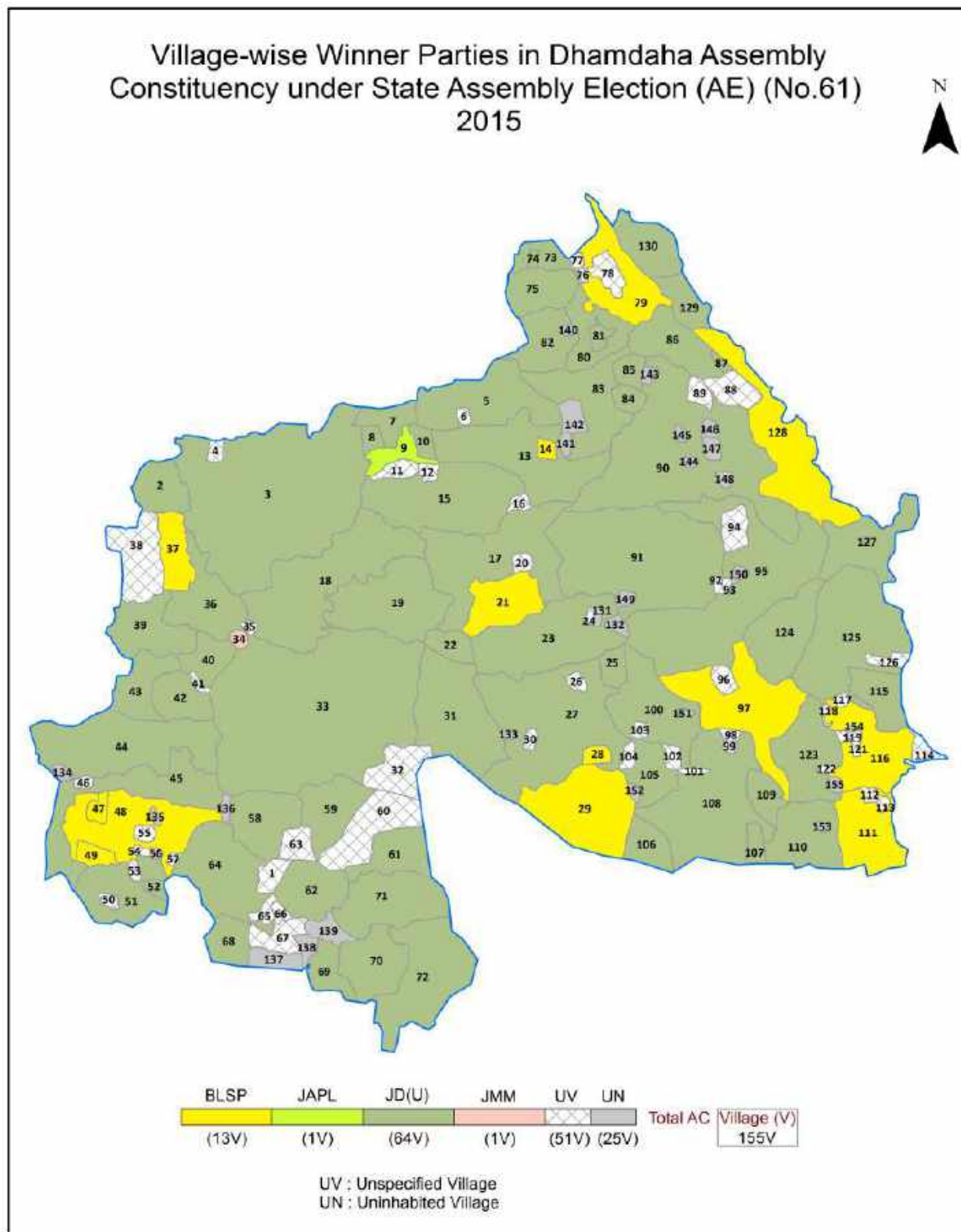
© Datanet India Pvt. Ltd.

All rights reserved. No part of this book may be reproduced, stored in a retrieval system or transmitted in any form or by any means, mechanical photocopying, photographing, scanning, recording or otherwise without the prior written permission of the publisher. Please refer to Disclaimer at page no. 261 for the use of this publication.

Printed in India

No.	Particulars	Page No.
	Introduction	
1	Assembly Constituency - (Vidhan Sabha) at a Glance Features of Assembly as per Delimitation Commission of India (2008)	1-2
	Location and Political Maps	
2	Location Map Boundaries of Assembly Constituency - (Vidhan Sabha in District Boundaries of Assembly Constituency under Parliamentary Constituency - (Lok Sabha) Village-wise Winner Parties- 2024, 2020, 2019, 2015, 2014, 2010 and 2009	3-11
	Administrative Setup (2011)	
3	District Sub-district Towns Villages Inhabited Villages Uninhabited Villages Village Panchayat Intermediate Panchayat	12-19
	Demographics (2011)	
4	Population Households Rural/Urban Population Villages by Population Size Sex Ratio (Total & 0-6 Years) Religious Population Social Population Literacy Rate	20-21
	Electoral Features	
5	Important Dates of Last Elections Held Electors by Gender Service Electors Voters Voters Turnout Polling Stations & Average Number of Electors per Polling Station Electors by Age Group Present Elected Representatives	22-27
	Historical Summary Election Results	
6	Vote Share of Major Parties Winning Margin (Number & Percentage Polarity of Parties Summary Result of Assembly Segment of Parliamentary Elections 2024, 2019, 2014, 2009, 2004 and 1999 Summary Result of Assembly Elections 2020, 2015, 2010, 2005 (Oct), 2005 (Feb), 2000, 1995, 1990, 1985, 1980, 1977, 1972, 1969, 1967, 1962, 1957 and 1952	28-54
	Polling Station Level Election Results	
7	Name and Number of Polling Station 2024, 2020, 2019, 2015, 2014, 2010 and 2009 Polling Station-wise Electors, Voters & Voters Turnout 2024, 2020, 2019, 2015, 2014, 2010 and 2009 Polling Station wise Elections Results 2024, 2020, 2019, 2015, 2014, 2010 and 2009	55-240
	Share of Assembly Constituency	
8	Share of Assembly Constituency - (Vidhan Sabha) in State, District and Parliamentary Constituency - (Lok Sabha)	241
	Socio-Economic Amenities (2011)	
9	Access to Administrative Units Agricultural, Manufacturing and Industrial Commodities Demographic Indicators Education Health & Manpower Drinking Water Supply Sanitation Entertainment and Recreations Infrastructure Power Food Allocation Distribution and Marketing of Agriculture Commodities Infrastructure Transport and Road Infrastructure Communication Banking and Financial Services Land Use Irrigation Source	243-257
10	Abbreviation & Sources	258-260
11	Disclaimer	261

Location & Political Map



Administrative Setup

List of Village Panchayat & Intermediate Panchayat (Block) Name - 2011

Village Name	Village Panchayat Name	Intermediate Panchayat Name
Akbarabad	Ganeshpur	Krityanand Nagar
Alinagar	Bithnauli West	Krityanand Nagar
Alinagar	Satkodaria	Krityanand Nagar
Arazi Satkodaria	Satkodaria	Krityanand Nagar
Arazi Satkodaria	Satkodaria	Krityanand Nagar
Ashraf Nagar	Jagni	Krityanand Nagar
Aurahi	Bardela	Dhamdaha
Bahadurpur	Goasi	Krityanand Nagar
Baigna	Rahua, Sahara	Krityanand Nagar
Bakhri Kol	Majra	Krityanand Nagar
Banbhag	Banbhag	Krityanand Nagar
Bansipurandaha	Kuari	Dhamdaha
Bansipurandaha Milik	Kuari	Dhamdaha
Bardela	Bardela	Dhamdaha
Barkona	Rupaspur Khagha	Dhamdaha
Barkona Milik	Rupaspur Khagha	Dhamdaha
Bela Champawati	Champawati	Dhamdaha
Bela Gobind	Sarsi	Dhamdaha
Bhawani Chak	Bishunpu	Dhamdaha
Bhawanipur	Majra	Krityanand Nagar
Bhutia	Damgari	Dhamdaha
Bishunpur Milik	Kishunpur Balua	Dhamdaha
Bishunpur Milik	Kishunpur Balua	Dhamdaha
Bishunpur Milik	Bishunpu	Dhamdaha
Bishunpur Patti	Bishunpu	Dhamdaha
Bithnauli Khemchand	Bithnauli East	Krityanand Nagar
Champawati	Champawati	Dhamdaha
Champawati Milik	Parasbani	Dhamdaha
Chandrahi	Thari	Dhamdaha

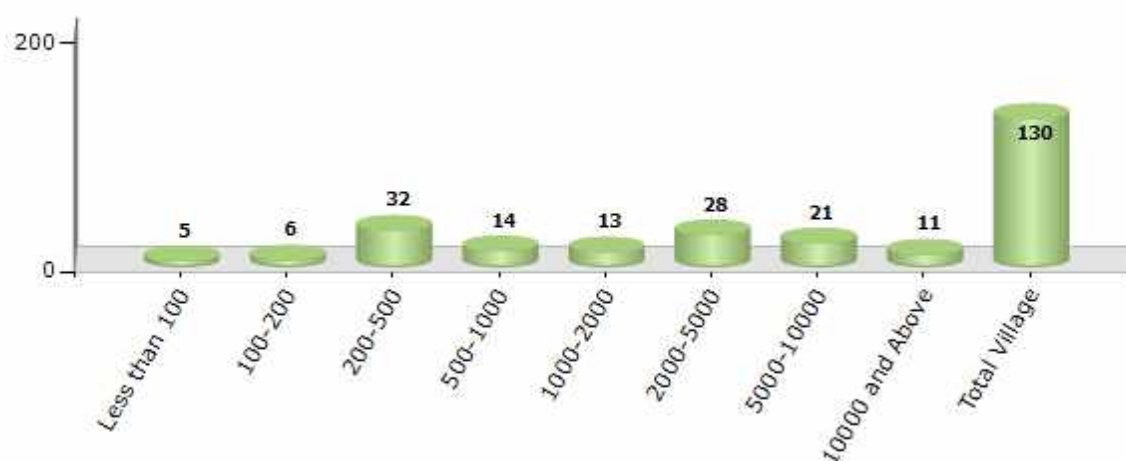
Contd....

Demographics

Number of Villages by Population Size - 2011

Less than 100	100-200	200-500	500-1000	1000-2000	2000-5000	5000-10000	10000 and Above	Total Village
5	6	32	14	13	28	21	11	130

Number of Villages by Population Size - 2011

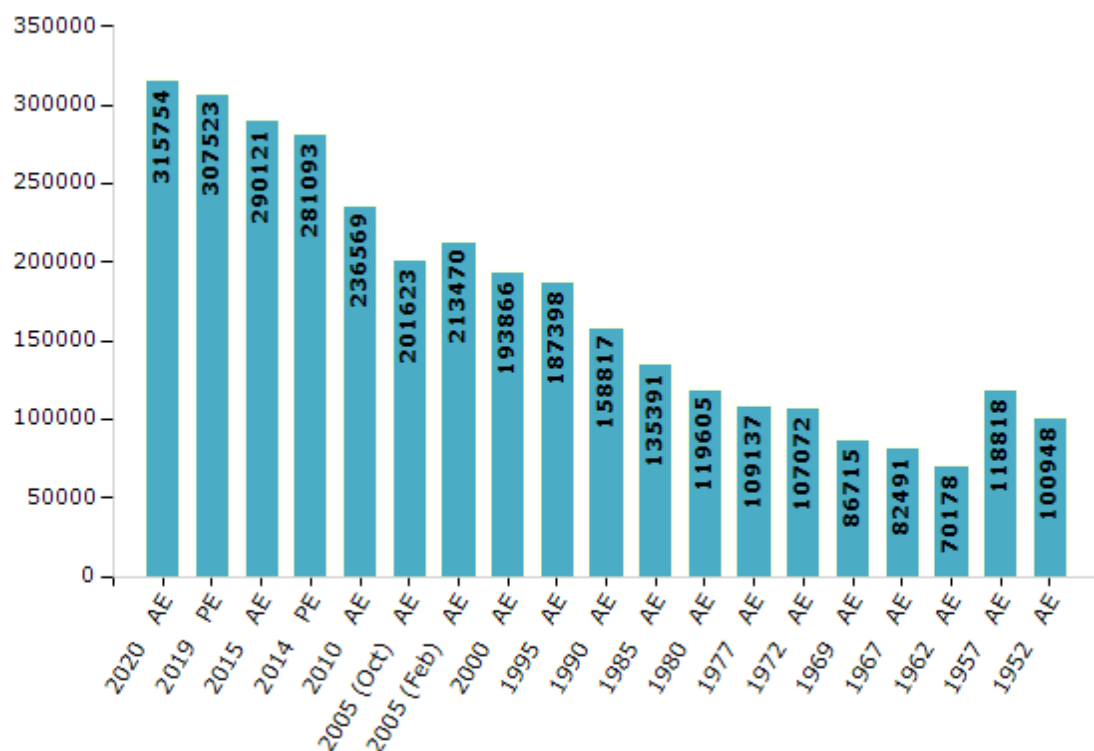


Electoral Features

Electors by Male & Female

Year	Male	Female	Others	Total	Year	Male	Female	Others	Total
2020 AE	163101	152646	7	315754	1995 AE	96964	90434	-	187398
2019 PE	158673	148843	7	307523	1990 AE	81350	77467	-	158817
2015 AE	150118	139996	7	290121	1985 AE	68892	66499	-	135391
2014 PE	145693	135397	3	281093	1980 AE	65787	53818	-	119605
2010 AE	123817	112752	0	236569	1977 AE	68260	40877	-	109137
2009 PE	-	-	-	-	1972 AE	54417	52655	-	107072
2005 (Oct) AE	105286	96337	-	201623	1969 AE	44910	41805	-	86715
2005 (Feb) AE	111378	102092	-	213470	1967 AE	-	-	-	82491
2004 PE	-	-	-	-	1962 AE	-	-	-	70178
2000 AE	103122	90744	-	193866	1957 AE	-	-	-	118818
1999 PE	-	-	-	-	1952 AE	-	-	-	100948

Number of Electors



Note : AE : Assembly Election, PE : Assembly Segment of Parliamentary Election

Historical Summary Election Results

Summary Result of Assembly Election - 2015

Candidate Name	Party	Votes	Votes %
Leshi Singh	JD(U)	76027	40.15
Shiv Shankar Thakur Alias Shankar Azad	BLSP	45736	24.15
Dilip Kumar Yadav	JAPL	12667	6.69
Mithlesh Kumar Singh	CPM	4991	2.64
Jyoti Rani	IND	4144	2.19
Pappu Kumar Ranjan	IND	3924	2.07
Yogendra Kumar	IND	3776	1.99
Tahammul Mansuri	JMM	3656	1.93
Bimal Roy	SHS	3378	1.78
Pankaj Kumar Singh	CPI(ML)(L)	2740	1.45
Chand Dev Paswan	IND	2554	1.35
Sudama Kumar	SKLP	2242	1.18
Tarun Kumar Singh	BSP	2132	1.13
Niranjan Kumar Singh	IND	2094	1.11
Sunil Ray	RaJPa	1766	0.93
Nawalesh Pathak	IND	1555	0.82
Lokesh Kumar	IND	1355	0.72
Md Aftab Alam	JDR	1231	0.65
Sanjay Ram	IND	1219	0.64
Yogendra Singh	IND	1216	0.64
Sunil Kumar Singh	IND	1110	0.59
Shrawan Kumar Yadav	MVM	1035	0.55
Vindeshwari Sharma	IND	984	0.52
Charitra Rishi	IND	942	0.5
Jyotish Kumar	LD	892	0.47
	NOTA	5990	3.16

Polling Station Level Election Results

Number and Name of Polling Stations (PS) (2020)

Number of Polling Stations	Name of Polling Stations	Number of Polling Stations	Name of Polling Stations
1	Middle School Bhotia Dakshin Bhag	14	Mahanth Mangani Ram Das Uchch Vidhyalaya Amari Dakshin Bhag
1A	Middle School Bhotia Dakshin Bhag	15	Mahanth Mangani Ram Das Uchch Vidhyalaya Amari Uttar Bhag
2	Middle School Bhotia Uttar Bhag	15A	Mahanth Mangani Ram Das Uchch Vidhyalaya Amari Uttar Bhag
3	Ganga Madhya Vidhyalaya Damagada Purwi Bhag	16	Madhya Vidhyalaya Amari Dakshin Bhag
3A	Ganga Madhya Vidhyalaya Damagada Purwi Bhag	17	Madhya Vidhyalaya Amari Uttar Bhag
4	Ganga Madhya Vidhyalaya Damagada Pashchim Bhag	18	Panchayat Bhavan Amari
4A	Ganga Madhya Vidhyalaya Damagada Pashchim Bhag	18A	Panchayat Bhavan Amari
5	Prathamik Vidhyalaya Oraon Tola Bhotia Uttar Bhag	19	Utkramit Madhya Vidhyalaya Amari Harijan Uttar Bhag
5A	Prathamik Vidhyalaya Oraon Tola Bhotia Uttar Bhag	19A	Utkramit Madhya Vidhyalaya Amari Harijan Uttar Bhag
6	Madhya Vidhyalaya Damagada Mehata Tola Uttar Bhag	20	Madhya Vidhyalaya Dipoti Purandaha, Purab Bhag
6A	Madhya Vidhyalaya Damagada Mehata Tola Uttar Bhag	20A	Madhya Vidhyalaya Dipoti Purandaha, Purab Bhag
7	Utkramit Madhya Vidhyalaya B.M.C. Maktab Khanua (Utar Bhag)	21	Madhya Vidhyalaya Dipoti Purandaha Pashchim Bhag
7A	Utkramit Madhya Vidhyalaya B.M.C. Maktab Khanua (Utar Bhag)	21A	Madhya Vidhyalaya Dipoti Purandaha Pashchim Bhag
8	Utkramit B.M.C. Maktab Khanua (Dakshin Bhag)	22	Rajkiya Buniyadi Vidhyalaya Mogaliya Purandaha Dakshin Bhag
9	Madhya Vidhyalaya Kukraun Makatab Uttar Bhag	23	Rajkiya Buniyadi Vidhyalaya Mogaliya Purandaha Uttar Bhag
10	Madhya Vidhyalaya Kukraun Maktab (Paschim Bhag)	24	Madhya Vidhyalaya Damagada Purab (Paschim Bhag)
10A	Madhya Vidhyalaya Kukraun Maktab (Paschim Bhag)	24A	Madhya Vidhyalaya Damagada Purab (Paschim Bhag)
11	Panchayat Bhavan Khanuo	25	Madhya Vidhyalaya Damgara Purv (Purab Bhag)
12	Madhya Vidhyalaya Kukraun Makatab, Dakshin Bhag	26	Prathamik Vidhyalaya Mogaliya Purandaha
13	Kanya Madhya Vidhyalaya Amari, Harijan Tola Purab Bhag	27	Panchayat Bhavan Mogaliya Purandaha Paschim Bhag
13A	Kanya Madhya Vidhyalaya Amari, Harijan Tola Purab Bhag	27A	Panchayat Bhavan Mogaliya Purandaha Paschim Bhag

Contd....

Polling Station Level Election Results

Polling Station-wise Votes Secured by Overall Top Five Parties in Dhamdaha Assembly in Assembly Election (AE) under Purnia Parliamentary Constituency in Bihar (2020)

Number of Polling Station	Winner - Leshi Singh (JD(U))	Runner-up - Dilip Kumar Yadav (RJD)	3rd - Yogendra Kumar (LJP)	4th - Ashish Anuj (IND)	5th - Ramesh Kumar Mehta (RLSP)	NOTA	Other	Total Votes Secured
23	298	128	5	22	12	6	91	562
24	171	103	3	12	7	6	52	354
24A	184	104	4	17	4	4	65	382
25	295	127	4	23	8	5	91	553
26	342	161	5	14	5	1	60	588
27	193	86	0	14	7	1	28	329
27A	89	241	3	3	2	3	33	374
28	391	98	6	10	5	3	29	542
29	280	69	0	25	8	3	46	431
30	60	537	3	3	0	1	58	662
31	54	365	12	1	1	1	43	477
32	64	513	14	3	4	3	66	667
33	372	134	7	3	7	1	32	556
34	204	123	13	1	2	1	20	364
34A	153	137	5	3	3	4	30	335
35	317	228	6	1	0	2	41	595
36	264	118	67	22	6	1	45	523
37	269	28	12	29	7	5	63	413
38	238	208	4	19	5	2	49	525
39	144	94	66	6	5	3	32	350
39A	165	157	15	4	9	1	24	375
40	82	493	7	5	3	3	90	683
41	79	214	4	4	0	3	47	351
42	242	58	48	10	6	1	41	406
42A	206	68	23	9	11	1	46	364
43	297	49	2	7	5	1	48	409
43A	279	58	14	14	3	2	35	405
44	173	51	2	12	2	6	36	282
44A	211	32	4	9	2	1	31	290
45	316	78	1	14	6	0	37	452
45A	351	41	1	11	3	1	28	436
46	394	22	8	14	4	0	20	462
47	391	26	7	14	12	3	29	482
48	130	88	8	14	9	9	63	321
48A	260	23	2	37	2	0	15	339

Contd....

Polling Station Level Election Results

Winner, Runner-up and 3rd Party Position & Winning Margin According to Polling Stations in Dhamdaha Assembly in Assembly Election (AE) under Purnia Parliamentary Constituency in Bihar (2020)

Polling Station Number	Winner Party	Winner Votes (%)	Runner-up Party	Runner-up Votes (%)	Winning Margin Votes (%)	Third Party	Third Party Votes (%)	Other Votes (%)
49	JD(U)	251 (74.7)	RJD	42 (12.5)	209 (62.2)	IND (AA)	10 (2.98)	33 (9.82)
49A	JD(U)	183 (57.01)	RJD	87 (27.1)	96 (29.91)	IND (AA)	14 (4.36)	37 (11.53)
50	JD(U)	264 (75.43)	RJD	44 (12.57)	220 (62.86)	LJP	10 (2.86)	32 (9.14)
50A	JD(U)	218 (62.29)	RJD	58 (16.57)	160 (45.72)	IND (AA)	15 (4.29)	59 (16.86)
51	JD(U)	261 (79.57)	RJD	27 (8.23)	234 (71.34)	LJP	7 (2.13)	33 (10.06)
51A	JD(U)	255 (62.2)	RJD	78 (19.02)	177 (43.18)	IND (AA)	15 (3.66)	62 (15.12)
52	JD(U)	228 (58.76)	RJD	46 (11.86)	182 (46.9)	LJP	38 (9.79)	76 (19.59)
52A	RJD	168 (44.68)	JD(U)	113 (30.05)	55 (14.63)	LJP	32 (8.51)	63 (16.76)
53	RJD	541 (81.72)	IND (SKR)	35 (5.29)	506 (76.43)	IND (SK)	19 (2.87)	67 (10.12)
54	RJD	300 (83.33)	NCP	12 (3.33)	288 (80)	JD(U)	9 (2.5)	39 (10.83)
54A	RJD	411 (92.78)	NCP	8 (1.81)	403 (90.97)	LJP	5 (1.13)	19 (4.29)
55	JD(U)	310 (81.79)	RJD	33 (8.71)	277 (73.08)	LJP	8 (2.11)	28 (7.39)
55A	JD(U)	262 (71.58)	RJD	31 (8.47)	231 (63.11)	IND (AA)	17 (4.64)	56 (15.3)
56	RJD	105 (28.15)	LJP	103 (27.61)	2 (0.54)	JD(U)	93 (24.93)	72 (19.3)
56A	JD(U)	205 (62.69)	LJP	45 (13.76)	160 (48.93)	RJD	24 (7.34)	53 (16.21)
57	JD(U)	259 (59.68)	RJD	105 (24.19)	154 (35.49)	IND (BS)	10 (2.3)	60 (13.82)
58	JD(U)	354 (75.32)	RJD	60 (12.77)	294 (62.55)	IND (AA)	8 (1.7)	48 (10.21)
59	JD(U)	212 (77.66)	RJD	22 (8.06)	190 (69.6)	IND (AA)	12 (4.4)	27 (9.89)
59A	RJD	202 (66.23)	JD(U)	75 (24.59)	127 (41.64)	IND (SK)	9 (2.95)	19 (6.23)
60	JD(U)	318 (69.58)	RJD	49 (10.72)	269 (58.86)	IND (AA)	23 (5.03)	67 (14.66)
61	JD(U)	229 (75.08)	RJD	34 (11.15)	195 (63.93)	IND (BKT)	10 (3.28)	32 (10.49)
61A	JD(U)	233 (72.14)	RJD	44 (13.62)	189 (58.52)	IND (AA)	14 (4.33)	32 (9.91)
62	JD(U)	247 (53)	RJD	180 (38.63)	67 (14.37)	IND (AA)	6 (1.29)	33 (7.08)
63	JD(U)	235 (52.46)	RJD	169 (37.72)	66 (14.74)	IND (AA)	10 (2.23)	34 (7.59)
64	JD(U)	526 (89.91)	RJD	25 (4.27)	501 (85.64)	IND (AA)	7 (1.2)	27 (4.62)
65	JD(U)	283 (70.05)	RJD	69 (17.08)	214 (52.97)	RLSP	22 (5.45)	30 (7.43)
66	JD(U)	259 (42.81)	RJD	242 (40)	17 (2.81)	IND (AA)	21 (3.47)	83 (13.72)
67	JD(U)	270 (60.27)	RJD	128 (28.57)	142 (31.7)	IND (AA)	11 (2.46)	39 (8.71)
68	RJD	227 (45.22)	JD(U)	203 (40.44)	24 (4.78)	IND (MKY)	15 (2.99)	57 (11.35)
69	JD(U)	253 (60.82)	RJD	63 (15.14)	190 (45.68)	IND (AA)	21 (5.05)	79 (18.99)
69A	JD(U)	243 (61.83)	RJD	73 (18.58)	170 (43.25)	IND (AA)	20 (5.09)	57 (14.5)
70	JD(U)	271 (61.17)	RJD	95 (21.44)	176 (39.73)	IND (AA)	16 (3.61)	61 (13.77)
71	JD(U)	250 (56.31)	LJP	82 (18.47)	168 (37.84)	RJD	45 (10.14)	67 (15.09)
71A	LJP	149 (35.22)	JD(U)	138 (32.62)	11 (2.6)	IND (BKT)	33 (7.8)	103 (24.35)
72	JD(U)	297 (68.43)	RJD	69 (15.9)	228 (52.53)	LJP	19 (4.38)	49 (11.29)

Contd....

Socio-Economic Amenities - Rural

Access to Education Facilities

Particulars	Number of Villages (% of Population)				
	Available	Not Available	If Not Available (Distance of Nearest Facility)		
			A	B	C
Govt. Primary School	113 (98)	17 (2)	13 (2)	3 (0)	0 (0)
Private Primary School	30 (36)	100 (64)	0 (0)	0 (0)	0 (0)
Govt. Middle School	86 (91)	44 (9)	24 (3)	17 (5)	2 (0)
Private Middle School	23 (26)	107 (74)	0 (0)	0 (0)	0 (0)
Govt. Secondary School	6 (13)	124 (87)	15 (7)	73 (51)	35 (28)
Private Secondary School	0 (0)	130 (100)	0 (0)	1 (2)	0 (0)
Govt. Senior Secondary School	1 (8)	129 (92)	7 (3)	62 (47)	60 (42)
Private Senior Secondary School	0 (0)	130 (100)	0 (0)	0 (0)	0 (0)
Govt. Arts and Science Degree College	2 (9)	128 (91)	1 (0)	8 (14)	108 (74)
Private Arts and Science Degree College	0 (0)	130 (100)	2 (0)	9 (4)	0 (0)
Govt. Engineering College	0 (0)	130 (100)	0 (0)	0 (0)	0 (0)
Private Engineering College	0 (0)	130 (100)	0 (0)	7 (10)	123 (90)
Govt. Medicine College	0 (0)	130 (100)	0 (0)	0 (0)	129 (100)
Private Medicine College	0 (0)	130 (100)	0 (0)	0 (0)	1 (0)
Govt. Management Institute	0 (0)	130 (100)	0 (0)	0 (0)	130 (100)
Private Management Institute	0 (0)	130 (100)	0 (0)	0 (0)	0 (0)
Govt. Polytechnic	0 (0)	130 (100)	0 (0)	7 (9)	121 (91)
Private Polytechnic	1 (0)	129 (100)	0 (0)	0 (0)	1 (0)
Govt. Vocational Training School/ITI	0 (0)	130 (100)	0 (0)	8 (11)	117 (88)
Private Vocational Training School/ITI	4 (1)	126 (99)	0 (0)	0 (0)	1 (1)
Govt. Non Formal Training Centre	0 (0)	130 (100)	0 (0)	0 (0)	127 (90)
Private Non Formal Training Centre	0 (0)	130 (100)	0 (0)	0 (0)	3 (10)
Govt. School For Disabled	0 (0)	130 (100)	0 (0)	0 (0)	130 (100)
Private School For Disabled	0 (0)	130 (100)	0 (0)	0 (0)	0 (0)
Government Others	0 (0)	130 (100)	4 (2)	8 (10)	16 (27)
Private Others	3 (4)	127 (96)	0 (0)	2 (3)	0 (0)

Note : Distance A : Less than 5 km; B : Between 5-10 km; C : 10+ km.; Source : Data Analysis is based on 2011 Census.

DISCLAIMER

The Terms of Use and Disclaimer of Datanet India Private Limited (hereinafter referred to as "Datanet") for use of this analysis report of **Dhamdaha Assembly Constituency (Dhamdaha Vidhan Sabha)** :-

1. **Assembly Factbook™** is a Registered Trade Mark owned by Datanet.
2. All the maps are sketched and graphical representation only and have not been drawn to the scale and also not to represent the actual geographical area or boundary of the unit.
3. The data for the aforesaid analysis is based on authentic sources and has been culled from the various publications of Census, CSO and NSSO for district and block level data, various central and state government departments, Central & State Elections Commissions and the concerned Returning Officers' releases, Electoral Rolls, Election results and allied publications, internal assessment, surveys, estimates and analysis. Therefore, certain adjustment of data at micro level may have been done to arrive closer to the macro data.
4. Data have been provided on an "As Is" and "As AVAILABLE" basis
5. The colours shown in the maps or diagram and charts of a particular party, alliance or AC are indicative and do not represent them.
6. This publication which includes maps, sheets, graphs and data would be the property under copyright of Datanet only. The user may use these for its internal study, analysis and research purposes. It's public display, re-selling or any commercial uses by the user are not allowed.
7. Datanet has taken due care and caution in compilation and processing of data and allied information, but does not guarantee the accuracy, adequacy or completeness of any information/analysis and will be not responsible for any errors or omissions or for the results obtained from the use of such information/analysis.
8. All the contents for the publication have been culled from various authentic sources and Datanet reasonably believes such sources to be reliable, but does not make any representations, express or implied as to the accuracy or fitness of use of such information. The information or contents of the information/analysis do not constitute advice and should not be relied upon in making (or refraining from making) any decision. Any reliance placed upon the information provided by Datanet is the sole responsibility and strictly at the user's risk.
9. In no event will Datanet be liable for any damages (including, without limitation, damages for loss of business projects, or loss of profits) arising in contract, tort or otherwise from the use of or inability to use any of its contents, or from any action taken (or refrained from being taken) as a result of using the analysis or any of its contents. Datanet its directors, owners, editors, officials, employees, distributor and agents or any associate will not be liable for any errors in the information contained or any consequences arising from the use of the contents of the provided information/analysis.
10. If any provision of these terms and conditions is held invalid or illegal or unenforceable for any reason by any court of competent jurisdiction, such provision shall be severed and the remainder of provisions of the terms and conditions shall continue in full force and effect as if the Term of Use had been executed with the invalid, illegal or unenforceable provision eliminated.
11. If there are any discrepancies in the information provided, please bring it to attention of Datanet for suitable rectification measures.

**Buy Online This Complete Book At
Datanet India eBooks Store**

www.indiastatpublications.com

or go directly at

**[http://www.indiastatpublications.com/
Assembly_factbook/Bihar/Purnia/ Dhamdaha](http://www.indiastatpublications.com/Assembly_factbook/Bihar/Purnia/Dhamdaha)**

 **indiaSTAT**elections

ISBN : 978-93-5313-075-6



9 789353 130756