



Bihar

Assembly Factbook™

Pipra Assembly Constituency



Key Electoral Data of Pipra
Assembly Constituency (Vidhan Sabha)

Bihar

Assembly Factbook™

Pipra Assembly Constituency



Pipra Vidhan Sabha

Editor & Director

Dr. R.K. Thukral

Research Editor

Dr. Shafeeq Rahman

Compiled, Researched and Published by Datanet India Pvt. Ltd.

D-100, 1st Floor,

Okhla Industrial Area, Phase-I,
New Delhi- 110020.

Ph.: 91-11- 43580781-84

Email : support@indiastatpublications.com

Website : www.indiastatelections.com

Online Book Store :

www.indiastatpublications.com

Report No. : AFB/BR-017-0125

ISBN : 978-93-5313-163-0

First Edition : January, 2018

Eighth Updated Edition : January, 2025

Price : Rs. 11500/-

US\$ 310

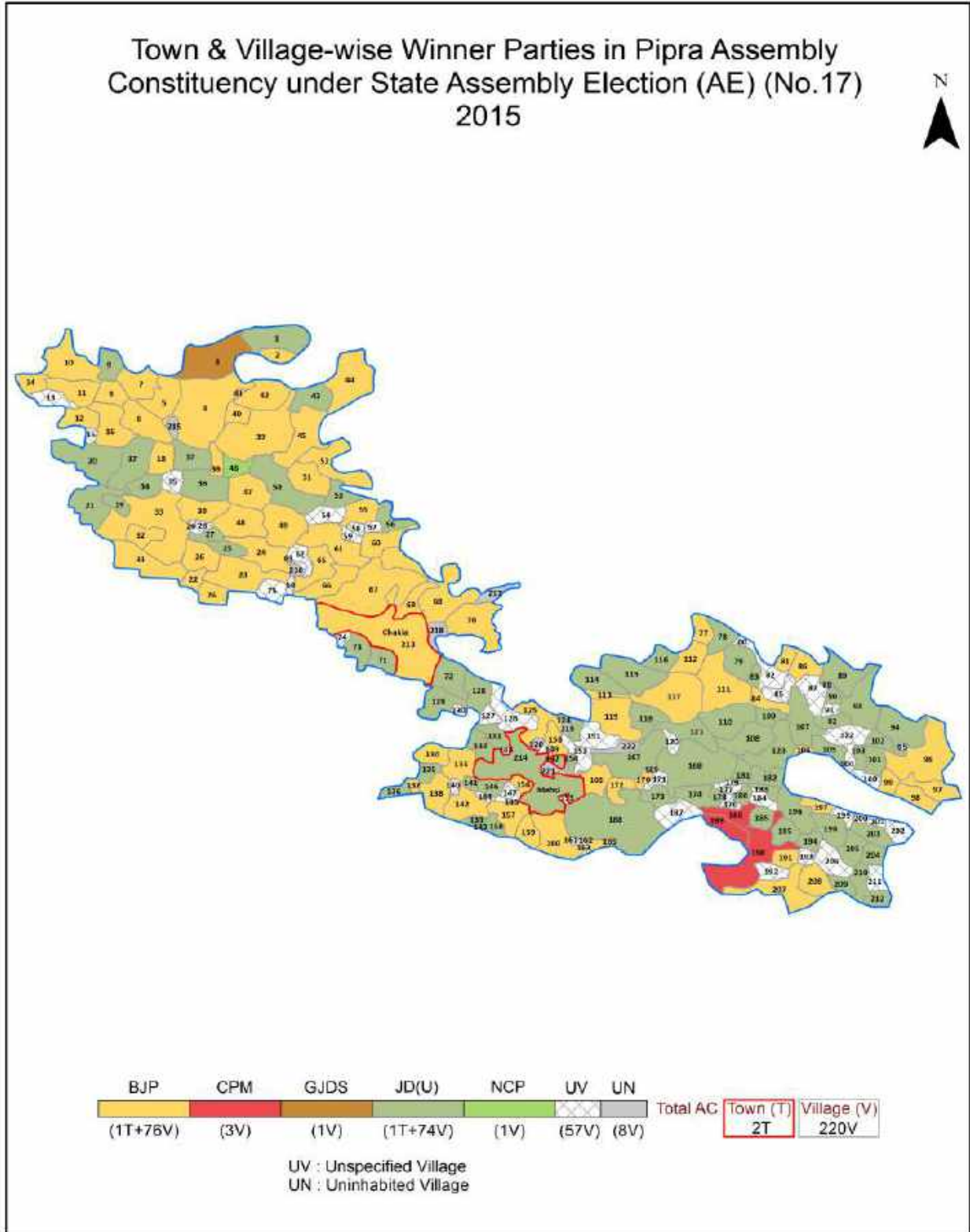
© Datanet India Pvt. Ltd.

All rights reserved. No part of this book may be reproduced, stored in a retrieval system or transmitted in any form or by any means, mechanical photocopying, photographing, scanning, recording or otherwise without the prior written permission of the publisher. Please refer to Disclaimer at page no. 271 for the use of this publication.

Printed in India

No.	Particulars	Page No.
	Introduction	
1	Assembly Constituency - (Vidhan Sabha) at a Glance Features of Assembly as per Delimitation Commission of India (2008)	1-2
	Location and Political Maps	
2	Location Map Boundaries of Assembly Constituency - (Vidhan Sabha) in District Boundaries of Assembly Constituency under Parliamentary Constituency - (Lok Sabha) Town & Village-wise Winner Parties- 2024, 2020, 2019, 2015, 2014, 2010 and 2009	3-11
	Administrative Setup (2011)	
3	District Sub-district Towns Villages Inhabited Villages Uninhabited Villages Village Panchayat Intermediate Panchayat	12-23
	Demographics (2011)	
4	Population Households Rural/Urban Population Towns and Villages by Population Size Sex Ratio (Total & 0-6 Years) Religious Population Social Population Literacy Rate	24-25
	Electoral Features	
5	Important Dates of Last Elections Held Electors by Gender Service Electors Voters Voters Turnout Polling Stations & Average Number of Electors per Polling Station Electors by Age Group Present Elected Representatives	26-31
	Historical Summary Election Results	
6	Vote Share of Major Parties Winning Margin (Number & Percentage) Polarity of Parties Summary Result of Assembly Segment of Parliamentary Elections 2024, 2019, 2014, 2009, 2004 and 1999 Summary Result of Assembly Elections 2020, 2015, 2010, 2005 (Oct), 2005 (Feb), 2000, 1995, 1990, 1985, 1980, 1977, 1972, 1969, 1967, 1962 and 1957	32-56
	Polling Station Level Election Results	
7	Name and Number of Polling Station 2024, 2020, 2019, 2015, 2014, 2010 and 2009 Polling Station-wise Electors, Voters & Voters Turnout 2024, 2020, 2019, 2015, 2014, 2010 and 2009 Polling Station wise Elections Results 2024, 2020, 2019, 2015, 2014, 2010 and 2009	57-250
	Share of Assembly Constituency	
8	Share of Assembly Constituency - (Vidhan Sabha) in State, District and Parliamentary Constituency - (Lok Sabha)	251
	Socio-Economic Amenities (2011)	
9	Access to Administrative Units Agricultural, Manufacturing and Industrial Commodities Demographic Indicators Education Health & Manpower Drinking Water Supply Sanitation Entertainment and Recreations Infrastructure Power Food Allocation Distribution and Marketing of Agriculture Commodities Infrastructure Transport and Road Infrastructure Communication Banking and Financial Services Land Use Irrigation Source	253-267
10	Abbreviation & Sources	268-270
11	Disclaimer	271

Location & Political Map



Administrative Setup

List of Village Panchayat & Intermediate Panchayat (Block) Name - 2011

Village Name	Village Panchayat Name	Intermediate Panchayat Name
Abdia	Nonimal	Mehsi
Ahibaran Chhapra	Mohammadpur Majhaulia	Mehsi
Amwa	Bhirkhia	Chakia(Pipra)
Arazi Nankar urf Narkatiya	Kunria	Chakia(Pipra)
Bahadurpur	Katha	Mehsi
Bahuara Gopi Sinh	Bahuara Gopi Sinh	Tetaria
Bahura RamNarayan Singh	Bahuara Gopi Sinh	Tetaria
Bairiya	Mahuawa	Chakia(Pipra)
Baisaha	Baisaha	Chakia(Pipra)
Bakhri	Bhurukurwa	Mehsi
Bakhri Nazir	Bakhri Nazir	Mehsi
Bal Bhadarpur Nankar	Semraha	Tetaria
Bala Tola	Bhurukurwa	Mehsi
Balbhadarpur	Narha Panapur	Tetaria
Ballo Chak	Baramdia	Chakia(Pipra)
Balwa	Mahuawa	Chakia(Pipra)
Bangri	Harpur	Chakia(Pipra)
Bara Gobind	Baisaha	Chakia(Pipra)
Baramdia	Baramdia	Chakia(Pipra)
Barharwa	Ojhilpur	Mehsi
Bariara	Jhitkahia	Mehsi
Barkurwa	Rajepur	Mehsi
Bathna	Bakhri Nazir	Mehsi
Bhagwanpur	Hardiyabad	Chakia(Pipra)
Bhagwanpur	Kothia	Tetaria
Bhagwatia	Jhitkahia	Mehsi
Bharthuiya	Chak Bara	Chakia(Pipra)
Bhatauliya	Parsauni Dewajit	Mehsi
Bhimalpur	Bhimalpur	Mehsi

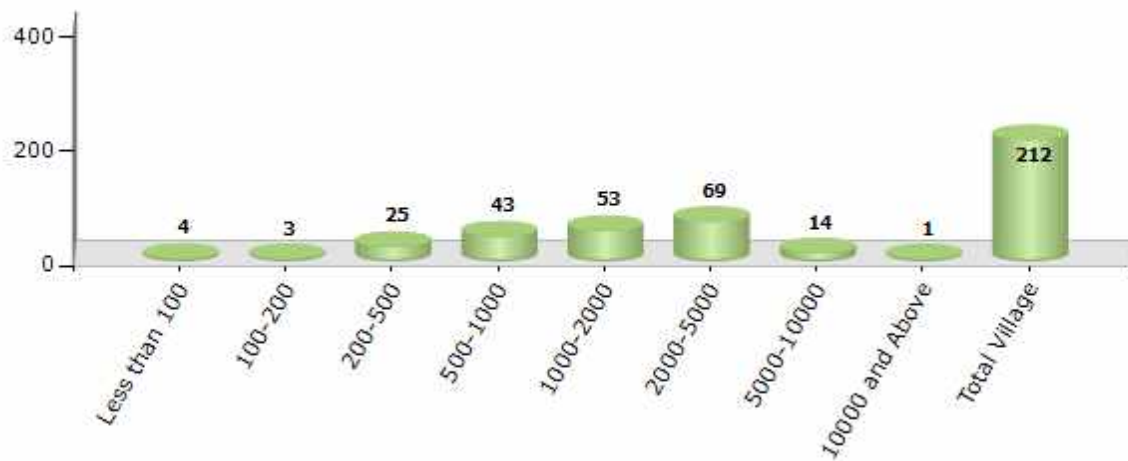
Contd....

Demographics

Number of Villages by Population Size - 2011

Less than 100	100-200	200-500	500-1000	1000-2000	2000-5000	5000-10000	10000 and Above	Total Village
4	3	25	43	53	69	14	1	212

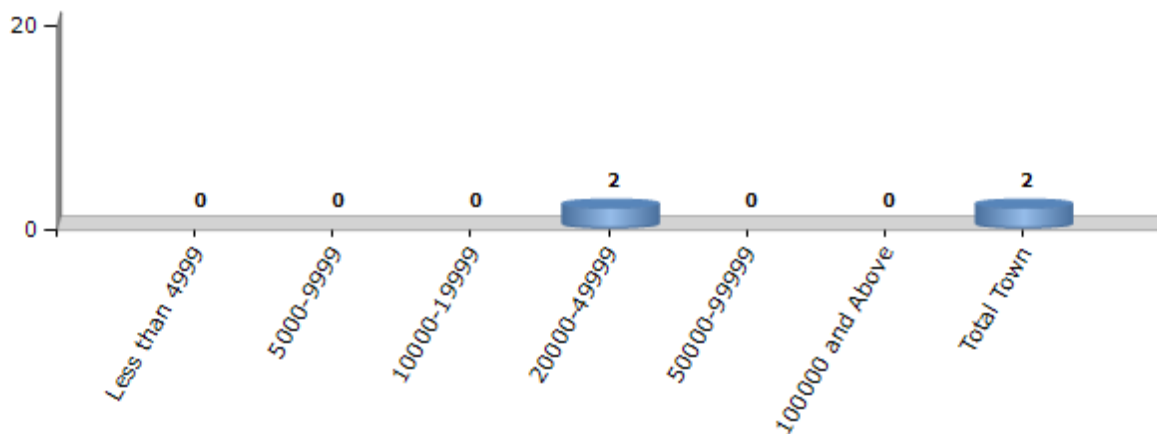
Number of Villages by Population Size - 2011



Number of Towns by Population Size - 2011

Less than 4999	5000-9999	10000-19999	20000-49999	50000-99999	100000 and Above	Total Town
0	0	0	2	0	0	2

Number of Towns by Population Size - 2011

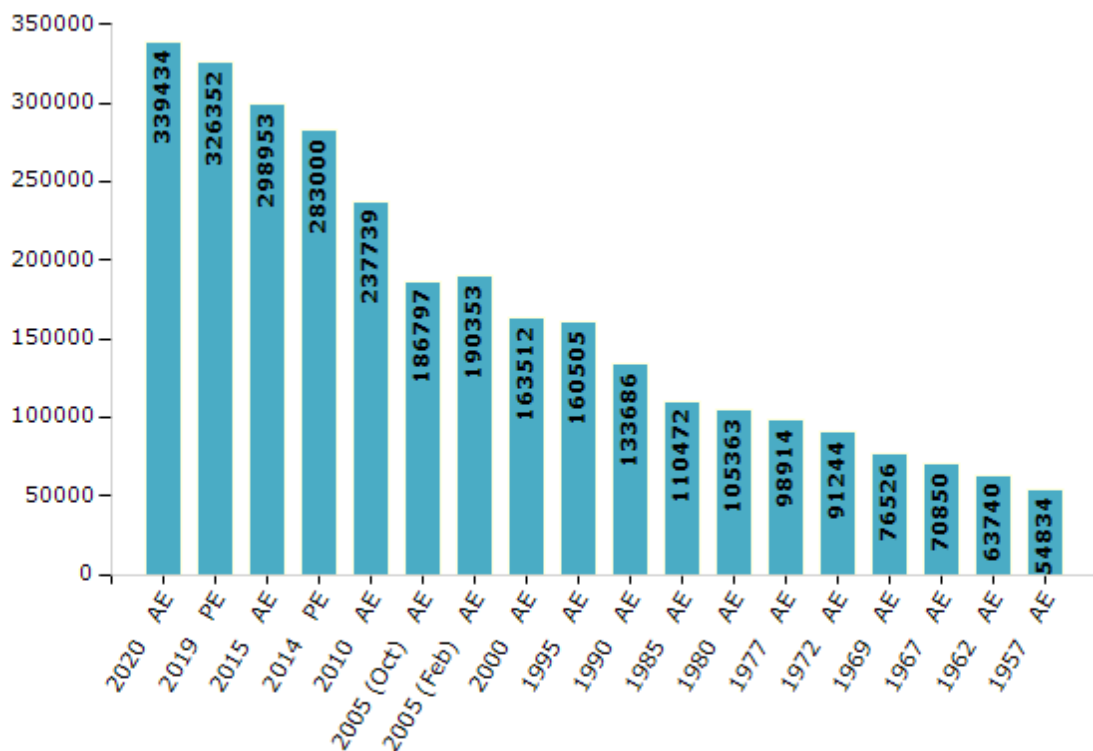


Electoral Features

Electors by Male & Female

Year	Male	Female	Others	Total	Year	Male	Female	Others	Total
2020 AE	179112	160309	13	339434	1995 AE	88794	71711	-	160505
2019 PE	173494	152845	13	326352	1990 AE	77134	56552	-	133686
2015 AE	159628	139314	11	298953	1985 AE	58348	52124	-	110472
2014 PE	152559	130427	14	283000	1980 AE	56181	49182	-	105363
2010 AE	129095	108644	0	237739	1977 AE	50171	48743	-	98914
2009 PE	-	-	-	-	1972 AE	47245	43999	-	91244
2005 (Oct) AE	100342	86455	-	186797	1969 AE	42007	34519	-	76526
2005 (Feb) AE	103391	86962	-	190353	1967 AE	-	-	-	70850
2004 PE	-	-	-	-	1962 AE	-	-	-	63740
2000 AE	89380	74132	-	163512	1957 AE	-	-	-	54834
1999 PE	-	-	-	-	1952 AE	-	-	-	-

Number of Electors



Note : AE : Assembly Election, PE : Assembly Segment of Parliamentary Election

Historical Summary Election Results

Summary Result of Assembly Election - 2015

Candidate Name	Party	Votes	Votes %
Shyambabu Prasad Yadav	BJP	65552	38
Krishan Chandra	JD(U)	61622	35.72
Raj Mangal Prasad	CPM	8366	4.85
Arun Kumar	IND	7266	4.21
Parshuram Pandey	IND	6139	3.56
Subhash Chandra Gupta	NCP	3479	2.02
Vikram Kumar	IND	3126	1.81
Sadhu Yadav	GJDS	2604	1.51
Nagendra Sahani	BSP	1847	1.07
Ramayan Paswan	BKP	1661	0.96
Ramadhar Sah	SKLP	1613	0.94
Bhagya Narayan Prasad Yadav	SP	1560	0.9
Pavan Kumar Ray	JAPL	1542	0.89
Ankush Kumar Singh	RVNP	1398	0.81
Daroga Sah	IND	1344	0.78
Uday Kumar Kushwaha	IND	1274	0.74
Naresh Prasad Sah	ABHKP	649	0.38
	NOTA	1454	0.84

Polling Station Level Election Results

Number and Name of Polling Stations (PS) (2020)

Number of Polling Stations	Name of Polling Stations	Number of Polling Stations	Name of Polling Stations
1	Utkramit Madhya Vidyalay Harapur Baya Bhag	17A	Utkramit Madhyamik Vidyalay Khairi Jamuniya (Utar Bhag)
2	Utkramit Madhy Vidyalay Harpur Daya Bhag	18	Utkramit Madhyamik Vidyalay Khairi Jamuniya (Dakshin Bhag)
3	Samudayik Bhavan Harapur	19	Madhya Vidyalay Khairi Mushhar Toli East Part
4	Prathamik Vidyalay Fulavariya	19A	Madhya Vidyalay Khairi Mushhar Toli East Part
5	Madhya Vidyalay Bangari (Purwi Bhag)	20	Madhya Vidyalay Khairi Mushhar Toli, Pashchim Bhag
6	Madhya Vidhalay, Bangari (Utari Bhag)	21	Utkramit Madhya Vidhalay Khairi Jagari Kanya
6A	Madhya Vidhalay, Bangari (Utari Bhag)	22	Utkramit Madhya Vidhalaya Chintamanpur Mangalwari Bajar Daya Bhag
7	Prathamik Vidyalay Rudal Pakadi Dumari Daya Bhag	22A	Utkramit Madhya Vidhalaya Chintamanpur Mangalwari Bajar Daya Bhag
7A	Prathamik Vidyalay Rudal Pakadi Dumari Daya Bhag	23	Utkramit Madhy Vidhyalay Chintamanpur Mangalwari Bajar Baya Bhag
8	Madhya Vidyalay Sariyatapur Khan Tola Baya Bhag	24	Utkramit Madhyamik Vidyalay Chintamanpur
9	Madhy Vidyalay Sariyatpur Khan Tola Daya Bhag	25	Utkramit Madhya Vidhalaya Chintamanpur Babu Tola North
10	Utkramit Madhya Vidyalay Makari Mahuava	25A	Utkramit Madhya Vidhalaya Chintamanpur Babu Tola North
11	Prathamik Vidyalay Tajeyapur Baya Bhag	26	Madhya Vidyalay Tikuliya West Part
12	Prathamik Vidyalay Tajeyapur Daya Bhag	26A	Madhya Vidyalay Tikuliya West Part
13	Prathamik Vidyalay Kuriya Bangari Daya Bhag	27	Madhya Vidyalay Tikuliya East Part
13A	Prathamik Vidyalay Kuriya Bangari Daya Bhag	27A	Madhya Vidyalay Tikuliya East Part
14	Utkramit Madhya Vidhalay Vataganj Noniyawa Uttari Bhag	28	Utkramit Madhya Vidhalay Chintamanpur Bajar Pashchim Bhag
15	Utkramit Madhy Vidhalay Vatganj Noniyawa Dakshini Bhag	28A	Utkramit Madhya Vidhalay Chintamanpur Bajar Pashchim Bhag
16	Prathamik Vidyalay Ramagadh Mahuava, Pashchimi Uttar Bhag	29	Utkramit Madhya Vidhalay Chintamanpur Bajar Uttar Bhag
16A	Prathamik Vidyalay Ramagadh Mahuava, Pashchimi Uttar Bhag	30	Utkramit Madhya Vidyalay Sita Kund Daya Bhag
17	Utkramit Madhyamik Vidyalay Khairi Jamuniya (Utar Bhag)	30A	Utkramit Madhya Vidyalay Sita Kund Daya Bhag

Contd....

Polling Station Level Election Results

Polling Station-wise Votes Secured by Overall Top Five Parties in Pipra Assembly in Assembly Election (AE) under Purvi Champaran Parliamentary Constituency in Bihar (2020)

Number of Polling Station	Winner - Shyambabu Prasad Yadav (BJP)	Runner-up - Rajmangal Prasad (CPM)	3rd - Awadhesh Pd Kushwaha (IND)	4th - Shyam Nandan Kumar (IND)	5th - Subhash Singh Kushwaha (RLSP)	NOTA	Other	Total Votes Secured
27	181	127	4	5	7	11	10	345
27A	238	65	4	8	3	6	22	346
28	136	125	8	11	10	33	23	346
28A	156	123	15	8	7	13	13	335
29	235	103	6	5	3	12	59	423
30	212	87	62	6	2	3	19	391
30A	228	89	30	19	3	12	27	408
31	142	241	30	2	15	7	12	449
31A	121	88	32	8	3	11	68	331
32	170	59	10	9	5	3	37	293
32A	179	29	20	6	3	5	133	375
33	255	55	23	20	4	7	30	394
33A	207	49	48	9	4	5	58	380
34	181	93	39	19	7	16	72	427
34A	237	96	38	11	10	6	59	457
35	247	254	11	16	12	23	48	611
36	109	233	4	7	4	8	12	377
36A	137	112	5	6	4	15	25	304
37	149	156	6	6	7	17	20	361
37A	136	156	7	11	5	21	17	353
38	213	61	3	6	5	7	11	306
38A	40	268	8	1	1	11	6	335
39	229	58	6	6	9	10	31	349
40	255	82	21	18	10	10	30	426
40A	244	153	9	18	6	22	23	475
41	94	187	7	6	7	3	38	342
41A	148	115	4	12	7	17	37	340
42	325	132	17	11	8	21	149	663
43	170	182	15	3	16	10	33	429
44	290	73	5	15	13	14	65	475
45	132	286	9	18	15	45	32	537
46	281	266	13	11	12	13	28	624
47	132	451	14	10	6	25	15	653
48	226	168	14	11	6	18	91	534
49	344	94	27	17	15	11	32	540

Contd....

Polling Station Level Election Results

Winner, Runner-up and 3rd Party Position & Winning Margin According to Polling Stations in Pipra Assembly in Assembly Election (AE) under Purvi Champaran Parliamentary Constituency in Bihar (2020)

Polling Station Number	Winner Party	Winner Votes (%)	Runner-up Party	Runner-up Votes (%)	Winning Margin Votes (%)	Third Party	Third Party Votes (%)	Other Votes (%)
50	CPM	264 (48.44)	BJP	172 (31.56)	92 (16.88)	RJnJnP	39 (7.16)	70 (12.84)
51	CPM	185 (45.45)	BJP	149 (36.61)	36 (8.84)	RJnJnP	30 (7.37)	43 (10.57)
51A	CPM	168 (40.68)	BJP	155 (37.53)	13 (3.15)	RJnJnP	52 (12.59)	38 (9.2)
52	CPM	157 (51.99)	BJP	95 (31.46)	62 (20.53)	RJnJnP	11 (3.64)	39 (12.91)
52A	BJP	153 (47.22)	CPM	107 (33.02)	46 (14.2)	RJnJnP	36 (11.11)	28 (8.64)
53	CPM	257 (43.41)	BJP	234 (39.53)	23 (3.88)	RJnJnP	16 (2.7)	85 (14.36)
54	BJP	172 (49.71)	CPM	94 (27.17)	78 (22.54)	RJnJnP	35 (10.12)	45 (13.01)
54A	CPM	181 (49.86)	BJP	120 (33.06)	61 (16.8)	RJnJnP	21 (5.79)	41 (11.29)
55	BJP	182 (55.15)	CPM	98 (29.7)	84 (25.45)	IND (APK)	13 (3.94)	37 (11.21)
55A	BJP	141 (39.39)	CPM	124 (34.64)	17 (4.75)	IND (APK)	28 (7.82)	65 (18.16)
56	CPM	127 (33.78)	RJnJnP	111 (29.52)	16 (4.26)	BJP	74 (19.68)	64 (17.02)
56A	CPM	138 (37.1)	BJP	109 (29.3)	29 (7.8)	RJnJnP	77 (20.7)	48 (12.9)
57	BJP	254 (45.44)	CPM	141 (25.22)	113 (20.22)	IND (APK)	82 (14.67)	82 (14.67)
58	CPM	263 (54.34)	BJP	127 (26.24)	136 (28.1)	IND (APK)	43 (8.88)	51 (10.54)
59	CPM	231 (47.73)	BJP	177 (36.57)	54 (11.16)	IND (APK)	17 (3.51)	59 (12.19)
60	BJP	191 (48.72)	CPM	150 (38.27)	41 (10.45)	IND (SNK)	11 (2.81)	40 (10.2)
61	CPM	415 (76.57)	BJP	61 (11.25)	354 (65.32)	IND (APK)	19 (3.51)	47 (8.67)
62	CPM	397 (75.33)	BJP	67 (12.71)	330 (62.62)	IND (APK)	25 (4.74)	38 (7.21)
63	BJP	167 (57.79)	CPM	85 (29.41)	82 (28.38)	IND (SNK)	9 (3.11)	28 (9.69)
63A	BJP	210 (64.81)	CPM	64 (19.75)	146 (45.06)	RJnJnP	20 (6.17)	30 (9.26)
64	CPM	222 (64.16)	BJP	89 (25.72)	133 (38.44)	RJnJnP	7 (2.02)	28 (8.09)
64A	BJP	162 (51.27)	CPM	108 (34.18)	54 (17.09)	RJnJnP	10 (3.16)	36 (11.39)
65	BJP	107 (45.73)	CPM	65 (27.78)	42 (17.95)	RJnJnP	33 (14.1)	29 (12.39)
65A	CPM	150 (44.25)	BJP	128 (37.76)	22 (6.49)	IND (APK)	25 (7.37)	36 (10.62)
66	BJP	127 (54.04)	JDR	37 (15.74)	90 (38.3)	IND (APK)	31 (13.19)	40 (17.02)
66A	CPM	121 (43.68)	BJP	82 (29.6)	39 (14.08)	IND (APK)	31 (11.19)	43 (15.52)
67	CPM	142 (39.55)	BJP	107 (29.81)	35 (9.74)	IND (APK)	22 (6.13)	88 (24.51)
67A	BJP	179 (49.31)	CPM	104 (28.65)	75 (20.66)	IND (APK)	21 (5.79)	59 (16.25)
68	CPM	185 (47.8)	BJP	138 (35.66)	47 (12.14)	IND (SNK)	10 (2.58)	54 (13.95)
69	BJP	151 (56.13)	CPM	50 (18.59)	101 (37.54)	RJnJnP	38 (14.13)	30 (11.15)
69A	BJP	172 (52.6)	RJnJnP	56 (17.13)	116 (35.47)	CPM	39 (11.93)	60 (18.35)
70	CPM	282 (49.74)	BJP	178 (31.39)	104 (18.35)	RJnJnP	24 (4.23)	83 (14.64)
71	CPM	206 (48.82)	BJP	161 (38.15)	45 (10.67)	RJnJnP	12 (2.84)	43 (10.19)
72	BJP	223 (66.77)	CPM	58 (17.37)	165 (49.4)	IND (APK)	13 (3.89)	40 (11.98)
72A	CPM	138 (49.46)	BJP	99 (35.48)	39 (13.98)	IND (APK)	18 (6.45)	24 (8.6)

Contd....

Socio-Economic Amenities - Rural

Access to Education Facilities

Particulars	Number of Villages (% of Population)				
	Available	Not Available	If Not Available (Distance of Nearest Facility)		
			A	B	C
Govt. Primary School	183 (96)	29 (4)	25 (3)	4 (0)	0 (0)
Private Primary School	27 (19)	185 (81)	0 (0)	0 (0)	0 (0)
Govt. Middle School	118 (77)	94 (23)	76 (18)	16 (4)	0 (0)
Private Middle School	14 (8)	198 (92)	0 (0)	0 (0)	0 (0)
Govt. Secondary School	12 (9)	200 (91)	51 (28)	123 (50)	24 (11)
Private Secondary School	5 (4)	207 (96)	0 (0)	0 (0)	0 (0)
Govt. Senior Secondary School	3 (4)	209 (96)	17 (10)	156 (70)	34 (15)
Private Senior Secondary School	3 (2)	209 (98)	0 (0)	0 (0)	0 (0)
Govt. Arts and Science Degree College	1 (1)	211 (99)	6 (6)	102 (44)	102 (49)
Private Arts and Science Degree College	1 (0)	211 (100)	0 (0)	0 (0)	0 (0)
Govt. Engineering College	0 (0)	212 (100)	0 (0)	0 (0)	0 (0)
Private Engineering College	0 (0)	212 (100)	0 (0)	2 (1)	210 (99)
Govt. Medicine College	0 (0)	212 (100)	0 (0)	0 (0)	212 (100)
Private Medicine College	0 (0)	212 (100)	0 (0)	0 (0)	0 (0)
Govt. Management Institute	0 (0)	212 (100)	0 (0)	0 (0)	212 (100)
Private Management Institute	0 (0)	212 (100)	0 (0)	0 (0)	0 (0)
Govt. Polytechnic	0 (0)	212 (100)	0 (0)	2 (1)	210 (99)
Private Polytechnic	0 (0)	212 (100)	0 (0)	0 (0)	0 (0)
Govt. Vocational Training School/ITI	0 (0)	212 (100)	0 (0)	2 (1)	209 (97)
Private Vocational Training School/ITI	1 (2)	211 (98)	0 (0)	0 (0)	0 (0)
Govt. Non Formal Training Centre	0 (0)	212 (100)	0 (0)	2 (1)	210 (99)
Private Non Formal Training Centre	0 (0)	212 (100)	0 (0)	0 (0)	0 (0)
Govt. School For Disabled	1 (1)	211 (99)	0 (0)	2 (1)	208 (98)
Private School For Disabled	1 (1)	211 (99)	0 (0)	0 (0)	0 (0)
Government Others	2 (0)	210 (100)	0 (0)	0 (0)	0 (0)
Private Others	1 (0)	211 (100)	0 (0)	0 (0)	0 (0)

Note : Distance A : Less than 5 km; B : Between 5-10 km; C : 10+ km.; Source : Data Analysis is based on 2011 Census.

DISCLAIMER

The Terms of Use and Disclaimer of Datanet India Private Limited (hereinafter referred to as "Datanet") for use of this analysis report of **Pipra Assembly Constituency (Pipra Vidhan Sabha)** :-

1. **Assembly Factbook™** is a Registered Trade Mark owned by Datanet.
2. All the maps are sketched and graphical representation only and have not been drawn to the scale and also not to represent the actual geographical area or boundary of the unit.
3. The data for the aforesaid analysis is based on authentic sources and has been culled from the various publications of Census, CSO and NSSO for district and block level data, various central and state government departments, Central & State Elections Commissions and the concerned Returning Officers' releases, Electoral Rolls, Election results and allied publications, internal assessment, surveys, estimates and analysis. Therefore, certain adjustment of data at micro level may have been done to arrive closer to the macro data.
4. Data have been provided on an "As Is" and "As AVAILABLE" basis
5. The colours shown in the maps or diagram and charts of a particular party, alliance or AC are indicative and do not represent them.
6. This publication which includes maps, sheets, graphs and data would be the property under copyright of Datanet only. The user may use these for its internal study, analysis and research purposes. It's public display, re-selling or any commercial uses by the user are not allowed.
7. Datanet has taken due care and caution in compilation and processing of data and allied information, but does not guarantee the accuracy, adequacy or completeness of any information/analysis and will be not responsible for any errors or omissions or for the results obtained from the use of such information/analysis.
8. All the contents for the publication have been culled from various authentic sources and Datanet reasonably believes such sources to be reliable, but does not make any representations, express or implied as to the accuracy or fitness of use of such information. The information or contents of the information/analysis do not constitute advice and should not be relied upon in making (or refraining from making) any decision. Any reliance placed upon the information provided by Datanet is the sole responsibility and strictly at the user's risk.
9. In no event will Datanet be liable for any damages (including, without limitation, damages for loss of business projects, or loss of profits) arising in contract, tort or otherwise from the use of or inability to use any of its contents, or from any action taken (or refrained from being taken) as a result of using the analysis or any of its contents. Datanet its directors, owners, editors, officials, employees, distributor and agents or any associate will not be liable for any errors in the information contained or any consequences arising from the use of the contents of the provided information/analysis.
10. If any provision of these terms and conditions is held invalid or illegal or unenforceable for any reason by any court of competent jurisdiction, such provision shall be severed and the remainder of provisions of the terms and conditions shall continue in full force and effect as if the Term of Use had been executed with the invalid, illegal or unenforceable provision eliminated.
11. If there are any discrepancies in the information provided, please bring it to attention of Datanet for suitable rectification measures.

**Buy Online This Complete Book At
Datanet India eBooks Store**

www.indiastatpublications.com

or go directly at

[http://www.indiastatpublications.com/
Assembly_factbook/Bihar/Purvi_Champaran/ Pipra](http://www.indiastatpublications.com/Assembly_factbook/Bihar/Purvi_Champaran/Pipra)

 **india**stat**elections**

ISBN : 978-93-5313-163-0

