



Bihar

Assembly Factbook™

Chainpur Assembly Constituency



Key Electoral Data of Chainpur
Assembly Constituency (Vidhan Sabha)

Bihar

Assembly Factbook™

Chainpur Assembly Constituency



Chainpur Vidhan Sabha

Editor & Director

Dr. R.K. Thukral

Research Editor

Dr. Shafeeq Rahman

Compiled, Researched and Published by Datanet India Pvt. Ltd.

D-100, 1st Floor,

Okhla Industrial Area, Phase-I,
New Delhi- 110020.

Ph.: 91-11- 43580781-84

Email : support@indiastatpublications.com

Website : www.indiastatelections.com

Online Book Store :

www.indiastatpublications.com

Report No. : AFB/BR-206-0125

ISBN : 978-93-5313-063-3

First Edition : January, 2018

Eighth Updated Edition : January, 2025

Price : Rs. 11500/-

US\$ 310

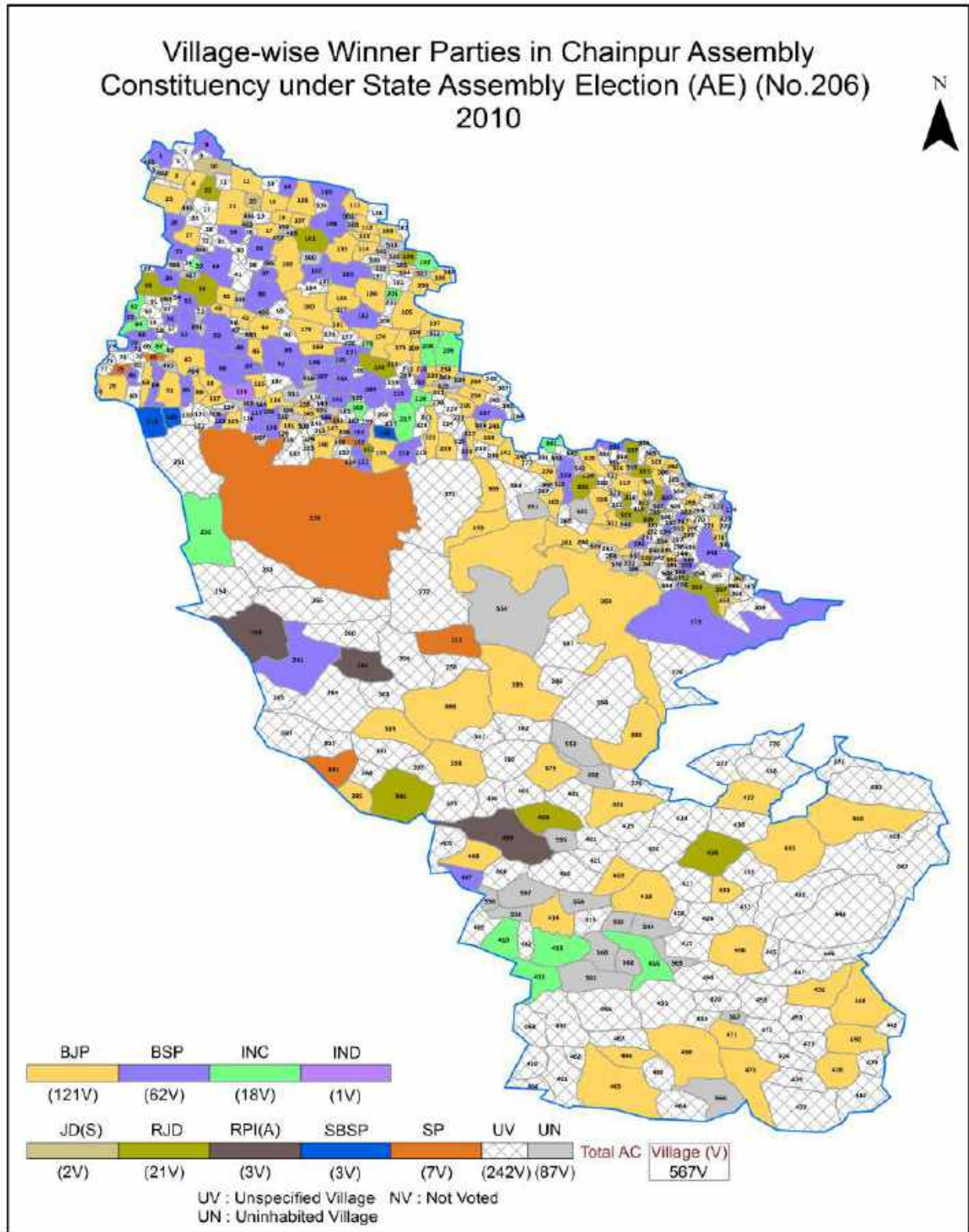
© Datanet India Pvt. Ltd.

All rights reserved. No part of this book may be reproduced, stored in a retrieval system or transmitted in any form or by any means, mechanical photocopying, photographing, scanning, recording or otherwise without the prior written permission of the publisher. Please refer to Disclaimer at page no. 213 for the use of this publication.

Printed in India

No.	Particulars	Page No.
	Introduction	
1	Assembly Constituency - (Vidhan Sabha) at a Glance Features of Assembly as per Delimitation Commission of India (2008)	1-2
	Location and Political Maps	
2	Location Map Boundaries of Assembly Constituency - (Vidhan Sabha in District Boundaries of Assembly Constituency under Parliamentary Constituency - (Lok Sabha) Village-wise Winner Parties- 2024, 2019, 2014, 2010 and 2009	3-11
	Administrative Setup (2011)	
3	District Sub-district Towns Villages Inhabited Villages Uninhabited Villages Village Panchayat Intermediate Panchayat	10-34
	Demographics (2011)	
4	Population Households Rural/Urban Population Villages by Population Size Sex Ratio (Total & 0-6 Years) Religious Population Social Population Literacy Rate	35-36
	Electoral Features	
5	Important Dates of Last Elections Held Electors by Gender Service Electors Voters Voters Turnout Polling Stations & Average Number of Electors per Polling Station Electors by Age Group Present Elected Representatives	37-42
	Historical Summary Election Results	
6	Vote Share of Major Parties Winning Margin (Number & Percentage Polarity of Parties Summary Result of Assembly Segment of Parliamentary Elections 2024, 2019, 2014, 2009, 2004 and 1999 Summary Result of Assembly Elections 2020, 2015, 2010, 2005 (Oct), 2005 (Feb), 2000, 1995, 1990, 1985, 1980, 1977, 1972, 1969, 1967, 1962, 1957 and 1952	43-68
	Polling Station Level Election Results	
7	Name and Number of Polling Station 2024, 2019, 2014, 2010 & 2009 Polling Station-wise Electors, Voters & Voters Turnout 2024, 2019, 2014, 2010 & 2009 Polling Station wise Elections Results 2024, 2019, 2014, 2010 & 2009	69-193
	Share of Assembly Constituency	
8	Share of Assembly Constituency - (Vidhan Sabha) in State, District and Parliamentary Constituency - (Lok Sabha)	194
	Socio-Economic Amenities (2011)	
9	Access to Administrative Units Agricultural, Manufacturing and Industrial Commodities Demographic Indicators Education Health & Manpower Drinking Water Supply Sanitation Entertainment and Recreations Infrastructure Power Food Allocation Distribution and Marketing of Agriculture Commodities Infrastructure Transport and Road Infrastructure Communication Banking and Financial Services Land Use Irrigation Source	196-209
10	Abbreviation & Sources	210-212
11	Disclaimer	213

Location & Political Map



Administrative Setup

List of Village Panchayat & Intermediate Panchayat (Block) Name - 2011

Village Name	Village Panchayat Name	Intermediate Panchayat Name
Adhaura	Adhaura	Adhaura
Ailae Patna	Sirihra	Chand
Akauni	Parhi	Chand
Akorhi	Padhauti	Bhagwanpur
Alipur	Parhi	Chand
Amahra	Dighar	Adhaura
Amarpur	Jaitpur Kalan	Bhagwanpur
Amawan	Chauri	Chand
Amawan	Amawan	Chainpur
Anapur	Majhui	Chainpur
Arail	Karjav	Chainpur
Arari	Mokaram	Bhagwanpur
Asanda	Dumarkon	Chainpur
Atara	Jamuninar	Adhaura
Athan	Athan	Adhaura
Auraiya	Goei	Chand
Ausan	Paharia	Bhagwanpur
Awnkhara	Hata	Chainpur
Babhani Kalan	Kolhuwa	Adhaura
Babhaniawan	Karjav	Chainpur
Babhniawan	Parhi	Chand
Bagchhara	Parhi	Chand
Baghaila	Chand	Chand
Baghaila	Dumarkon	Chainpur
Baghauta	Dighar	Adhaura
Baghi	Parhi	Chand
Bahabar	Chanpura	Adhaura
Bahadag	Dumrawan	Adhaura
Bahadura	Parhi	Chand

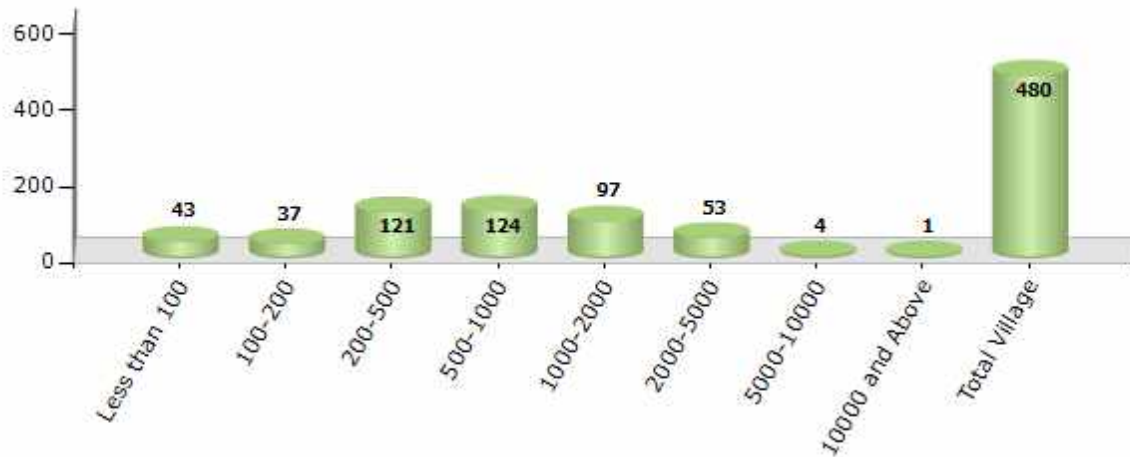
Contd....

Demographics

Number of Villages by Population Size - 2011

Less than 100	100-200	200-500	500-1000	1000-2000	2000-5000	5000-10000	10000 and Above	Total Village
43	37	121	124	97	53	4	1	480

Number of Villages by Population Size - 2011

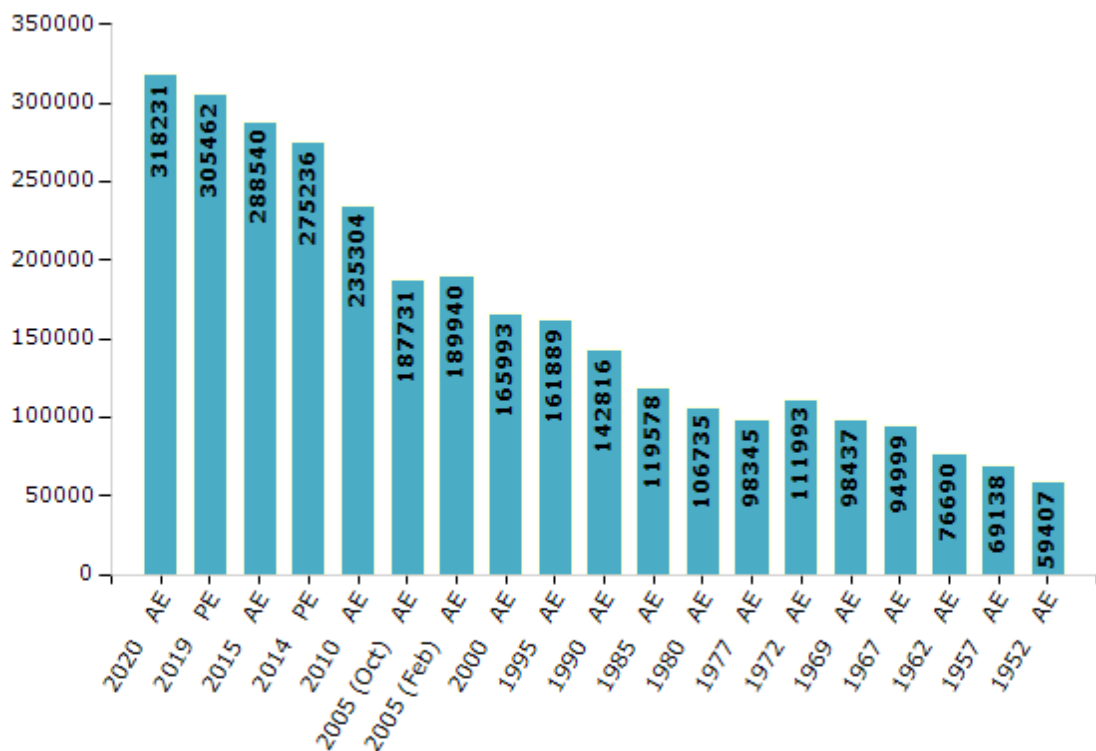


Electoral Features

Electors by Male & Female

Year	Male	Female	Others	Total	Year	Male	Female	Others	Total
2020 AE	166135	152095	1	318231	1995 AE	86018	75871	-	161889
2019 PE	160150	145307	5	305462	1990 AE	74516	68300	-	142816
2015 AE	151961	136566	13	288540	1985 AE	61707	57871	-	119578
2014 PE	145202	130018	16	275236	1980 AE	56431	50304	-	106735
2010 AE	125066	110238	0	235304	1977 AE	49589	48756	-	98345
2009 PE	-	-	-	-	1972 AE	58807	53186	-	111993
2005 (Oct) AE	98997	88734	-	187731	1969 AE	51535	46902	-	98437
2005 (Feb) AE	100159	89781	-	189940	1967 AE	-	-	-	94999
2004 PE	-	-	-	-	1962 AE	-	-	-	76690
2000 AE	88713	77280	-	165993	1957 AE	-	-	-	69138
1999 PE	-	-	-	-	1952 AE	-	-	-	59407

Number of Electors



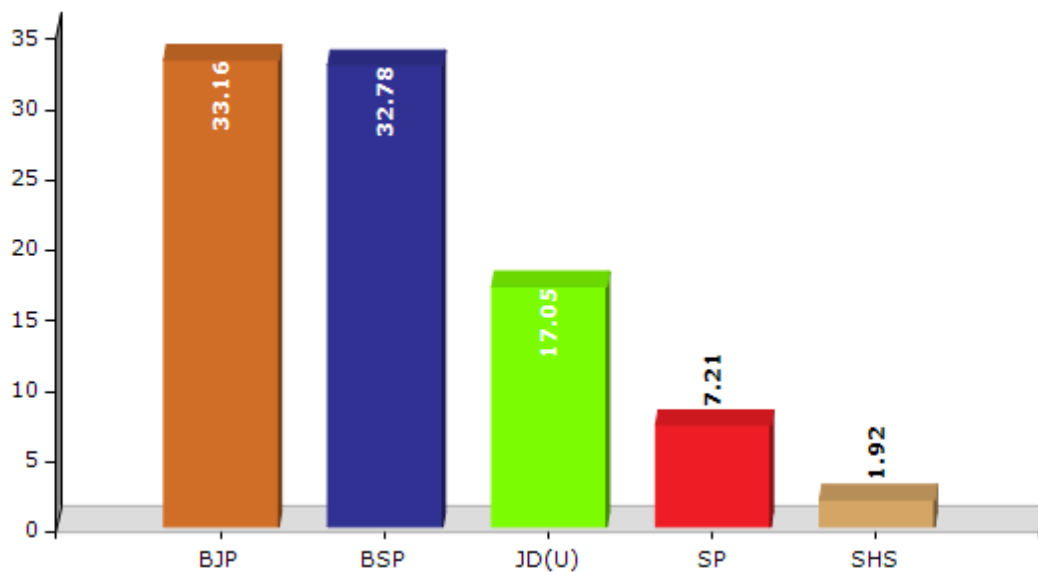
Note : AE : Assembly Election, PE : Assembly Segment of Parliamentary Election

Historical Summary Election Results

Summary Result of Assembly Election - 2015

Candidate Name	Party	Votes	Votes %
Brij Kishor Bind	BJP	58913	33.16
Mohammad Zama Khan	BSP	58242	32.78
Mahabali Singh	JD(U)	30287	17.05
Alok Kumar Singh	SP	12802	7.21
Parmeshwar Singh	SHS	3408	1.92
Ranglal Paswan	CPM	2573	1.45
Prahalad Bind	IND	1801	1.01
Surya Kant Prasad	IND	1316	0.74
Amarendra Pratap Singh	IND	1252	0.7
Ram Krishna Kharwar Alis R.K. Singh	SBSP	902	0.51
Prabhu Narayan Singh	IND	900	0.51
Shrawan Bind	IND	855	0.48
Tripurari Tiwari	ATBP	834	0.47
Deendayal Singh Kushwaha	IND	512	0.29
	NOTA	3074	1.73

Votes Percentage of Top Parties - 2015



Polling Station Level Election Results

Number and Name of Polling Stations (PS) (2010)

Number of Polling Stations	Name of Polling Stations	Number of Polling Stations	Name of Polling Stations
1	Biuri South Part	22	Kudadi
2	Biuri North Part	23	Bhaluhari
3	Shiv	24	Barav
4	Nobat	25	Duguthua
5	Silota	26	Keshari
6	Virbhanpur	27	Baradhi
7	Goi	28	Amav
8	Bhatani	29	Badahariya
9	Jigana	30	Chori
10	Sihoriya	31	Beri
11	Bhevar	32	Gehua
12	Dhobaha	33	Ledari
13	Chand (Kanya) West Part	34	Bahuara
14	Chand (Kanya) East Part	35	Sonav
15	Konahara	36	Darunpur
16	Baghela	37	Dulahi
17	Pipariya	38	Vaheriya
18	Kilani	39	Babhaniyav
19	Chandos	40	Akoni
20	Pavara	41	Padhi
21	Kharati	42	Karvandiya

Contd....

Polling Station Level Election Results

Polling Station-wise Votes Secured by Overall Top Five Parties in Chainpur Assembly in Assembly Election (AE) under Sasaram Parliamentary Constituency in Bihar (2010)

Number of Polling Station	Winner - Brij Kishor Vind (BJP)	Runner-up - Dr. Ajay Alok (BSP)	3rd - Mohammad Zama Khan (INC)	4th - Dharmendra Kumar Singh (RJD)	5th - Ramchandra Singh Yadav (SP)	Other	Total Votes Secured
36	257	38	8	25	8	32	368
37	166	133	12	34	37	19	401
38	726	86	17	11	6	60	906
39	111	76	105	161	2	43	498
40	81	250	118	61	12	54	576
41	131	209	200	259	16	55	870
42	83	149	538	39	0	23	832
43	74	411	138	29	1	22	675
44	127	132	22	29	66	52	428
45	130	139	26	9	9	62	375
46	182	135	5	5	21	16	364
47	209	157	10	35	1	59	471
48	226	272	64	19	65	48	694
49	219	238	130	139	44	45	815
50	144	178	82	37	9	56	506
51	137	106	134	92	19	26	514
52	79	194	592	31	1	38	935
53	91	125	112	84	8	39	459
54	74	207	87	4	28	41	441
55	32	116	242	69	63	36	558
56	71	78	42	34	92	37	354
57	82	156	46	33	255	68	640
58	145	69	130	28	26	65	463
59	88	193	63	125	10	37	516
60	229	47	57	54	82	46	515
61	116	166	62	71	26	32	473
62	263	178	71	62	50	56	680
63	185	148	115	20	59	110	637
64	59	272	130	96	30	77	664
65	158	229	18	48	14	60	527
66	122	105	44	18	121	29	439
67	100	57	15	2	15	13	202
68	223	193	143	115	11	75	760
69	100	134	1	8	2	53	298
70	110	171	10	1	0	11	303

Contd....

Polling Station Level Election Results

Winner, Runner-up and 3rd Party Position & Winning Margin According to Polling Stations in Chainpur Assembly in Assembly Election (AE) under Sasaram Parliamentary Constituency in Bihar (2010)

Polling Station Number	Winner Party	Winner Votes (%)	Runner-up Party	Runner-up Votes (%)	Winning Margin Votes (%)	Third Party	Third Party Votes (%)	Other Votes (%)
71	BJP	138 (41.82)	BSP	110 (33.33)	28 (8.49)	SBSP	51 (15.45)	31 (9.39)
72	BSP	365 (82.95)	BJP	33 (7.5)	332 (75.45)	IND (KKPS)	14 (3.18)	28 (6.36)
73	BJP	292 (39.35)	BSP	185 (24.93)	107 (14.42)	INC	119 (16.04)	146 (19.68)
74	BSP	358 (65.09)	INC	89 (16.18)	269 (48.91)	BJP	38 (6.91)	65 (11.82)
75	BSP	425 (57.43)	BJP	167 (22.57)	258 (34.86)	INC	52 (7.03)	96 (12.97)
76	INC	188 (42.25)	BJP	169 (37.98)	19 (4.27)	BSP	27 (6.07)	61 (13.71)
77	BJP	251 (55.65)	RJD	107 (23.73)	144 (31.92)	INC	39 (8.65)	54 (11.97)
78	BSP	216 (80)	BJP	42 (15.56)	174 (64.44)	RJD	5 (1.85)	7 (2.59)
79	BJP	235 (55.16)	BSP	98 (23)	137 (32.16)	RJD	28 (6.57)	65 (15.26)
80	BJP	145 (36.52)	BSP	114 (28.72)	31 (7.8)	INC	44 (11.08)	94 (23.68)
81	BJP	267 (38.14)	BSP	201 (28.71)	66 (9.43)	INC	89 (12.71)	143 (20.43)
82	RJD	198 (31.03)	BSP	143 (22.41)	55 (8.62)	BJP	97 (15.2)	200 (31.35)
83	BJP	255 (64.39)	BSP	51 (12.88)	204 (51.51)	RJD	36 (9.09)	54 (13.64)
84	INC	174 (42.86)	BJP	97 (23.89)	77 (18.97)	RJD	64 (15.76)	71 (17.49)
85	RJD	125 (25.2)	BJP	117 (23.59)	8 (1.61)	INC	104 (20.97)	150 (30.24)
86	BSP	242 (51.16)	BJP	109 (23.04)	133 (28.12)	RJD	70 (14.8)	52 (10.99)
87	BJP	304 (58.35)	INC	79 (15.16)	225 (43.19)	RJD	52 (9.98)	86 (16.51)
88	BJP	312 (48.75)	BSP	156 (24.38)	156 (24.37)	INC	50 (7.81)	122 (19.06)
89	BJP	485 (84.94)	BSP	27 (4.73)	458 (80.21)	INC	13 (2.28)	46 (8.06)
90	BJP	404 (45.96)	BSP	167 (19)	237 (26.96)	INC	145 (16.5)	163 (18.54)
91	BJP	380 (65.52)	BSP	95 (16.38)	285 (49.14)	INC	44 (7.59)	61 (10.52)
92	BJP	79 (36.92)	INC	54 (25.23)	25 (11.69)	BSP	52 (24.3)	29 (13.55)
93	INC	311 (80.57)	BSP	60 (15.54)	251 (65.03)	BJP	5 (1.3)	10 (2.59)
94	BJP	324 (46.02)	BSP	196 (27.84)	128 (18.18)	RJD	94 (13.35)	90 (12.78)
95	BJP	261 (55.41)	RJD	96 (20.38)	165 (35.03)	INC	81 (17.2)	33 (7.01)
96	BJP	222 (44.22)	BSP	207 (41.24)	15 (2.98)	INC	37 (7.37)	36 (7.17)
97	INC	451 (75.8)	RJD	79 (13.28)	372 (62.52)	BSP	25 (4.2)	40 (6.72)
98	INC	524 (76.05)	BJP	67 (9.72)	457 (66.33)	RJD	56 (8.13)	42 (6.1)
99	BJP	543 (90.5)	INC	22 (3.67)	521 (86.83)	BSP	19 (3.17)	16 (2.67)
100	INC	158 (31.04)	BJP	152 (29.86)	6 (1.18)	BSP	106 (20.83)	93 (18.27)
101	INC	380 (82.61)	BSP	21 (4.57)	359 (78.04)	BJP	17 (3.7)	42 (9.13)
102	INC	253 (32.86)	BJP	216 (28.05)	37 (4.81)	BSP	163 (21.17)	138 (17.92)
103	BJP	431 (56.41)	BSP	202 (26.44)	229 (29.97)	INC	81 (10.6)	50 (6.54)
104	INC	337 (48.91)	BSP	185 (26.85)	152 (22.06)	BJP	96 (13.93)	71 (10.3)
105	BJP	255 (56.92)	BSP	90 (20.09)	165 (36.83)	INC	47 (10.49)	56 (12.5)

Contd....

Socio-Economic Amenities - Rural

Access to Education Facilities

Particulars	Number of Villages (% of Population)				
	Available	Not Available	If Not Available (Distance of Nearest Facility)		
			A	B	C
Govt. Primary School	355 (91)	125 (9)	94 (6)	31 (2)	0 (0)
Private Primary School	34 (11)	446 (89)	0 (0)	0 (0)	0 (0)
Govt. Middle School	142 (53)	338 (47)	241 (37)	91 (9)	5 (1)
Private Middle School	11 (7)	469 (93)	0 (0)	0 (0)	0 (0)
Govt. Secondary School	18 (8)	462 (92)	57 (8)	99 (15)	305 (68)
Private Secondary School	2 (2)	478 (98)	0 (0)	0 (0)	0 (0)
Govt. Senior Secondary School	5 (2)	475 (98)	67 (20)	112 (20)	296 (58)
Private Senior Secondary School	0 (0)	480 (100)	0 (0)	0 (0)	0 (0)
Govt. Arts and Science Degree College	2 (0)	478 (100)	40 (11)	129 (19)	308 (71)
Private Arts and Science Degree College	0 (0)	480 (100)	0 (0)	1 (0)	0 (0)
Govt. Engineering College	0 (0)	480 (100)	0 (0)	0 (0)	181 (41)
Private Engineering College	0 (0)	480 (100)	0 (0)	1 (0)	298 (59)
Govt. Medicine College	0 (0)	480 (100)	0 (0)	0 (0)	480 (100)
Private Medicine College	0 (0)	480 (100)	0 (0)	0 (0)	0 (0)
Govt. Management Institute	0 (0)	480 (100)	0 (0)	0 (0)	477 (98)
Private Management Institute	0 (0)	480 (100)	0 (0)	0 (0)	3 (2)
Govt. Polytechnic	0 (0)	480 (100)	0 (0)	1 (0)	168 (41)
Private Polytechnic	0 (0)	480 (100)	0 (0)	22 (2)	289 (57)
Govt. Vocational Training School/ITI	0 (0)	480 (100)	4 (2)	33 (6)	442 (93)
Private Vocational Training School/ITI	0 (0)	480 (100)	0 (0)	0 (0)	1 (0)
Govt. Non Formal Training Centre	0 (0)	480 (100)	1 (0)	13 (5)	465 (94)
Private Non Formal Training Centre	0 (0)	480 (100)	0 (0)	0 (0)	1 (1)
Govt. School For Disabled	0 (0)	480 (100)	0 (0)	3 (3)	476 (97)
Private School For Disabled	0 (0)	480 (100)	0 (0)	0 (0)	1 (0)
Government Others	2 (0)	478 (100)	0 (0)	0 (0)	0 (0)
Private Others	0 (0)	480 (100)	0 (0)	0 (0)	0 (0)

Note : Distance A : Less than 5 km; B : Between 5-10 km; C : 10+ km.; Source : Data Analysis is based on 2011 Census.

DISCLAIMER

The Terms of Use and Disclaimer of Datanet India Private Limited (hereinafter referred to as "Datanet") for use of this analysis report of **Chainpur Assembly Constituency (Chainpur Vidhan Sabha)** :-

1. **Assembly Factbook™** is a Registered Trade Mark owned by Datanet.
2. All the maps are sketched and graphical representation only and have not been drawn to the scale and also not to represent the actual geographical area or boundary of the unit.
3. The data for the aforesaid analysis is based on authentic sources and has been culled from the various publications of Census, CSO and NSSO for district and block level data, various central and state government departments, Central & State Elections Commissions and the concerned Returning Officers' releases, Electoral Rolls, Election results and allied publications, internal assessment, surveys, estimates and analysis. Therefore, certain adjustment of data at micro level may have been done to arrive closer to the macro data.
4. Data have been provided on an "As Is" and "As AVAILABLE" basis
5. The colours shown in the maps or diagram and charts of a particular party, alliance or AC are indicative and do not represent them.
6. This publication which includes maps, sheets, graphs and data would be the property under copyright of Datanet only. The user may use these for its internal study, analysis and research purposes. It's public display, re-selling or any commercial uses by the user are not allowed.
7. Datanet has taken due care and caution in compilation and processing of data and allied information, but does not guarantee the accuracy, adequacy or completeness of any information/analysis and will be not responsible for any errors or omissions or for the results obtained from the use of such information/analysis.
8. All the contents for the publication have been culled from various authentic sources and Datanet reasonably believes such sources to be reliable, but does not make any representations, express or implied as to the accuracy or fitness of use of such information. The information or contents of the information/analysis do not constitute advice and should not be relied upon in making (or refraining from making) any decision. Any reliance placed upon the information provided by Datanet is the sole responsibility and strictly at the user's risk.
9. In no event will Datanet be liable for any damages (including, without limitation, damages for loss of business projects, or loss of profits) arising in contract, tort or otherwise from the use of or inability to use any of its contents, or from any action taken (or refrained from being taken) as a result of using the analysis or any of its contents. Datanet its directors, owners, editors, officials, employees, distributor and agents or any associate will not be liable for any errors in the information contained or any consequences arising from the use of the contents of the provided information/analysis.
10. If any provision of these terms and conditions is held invalid or illegal or unenforceable for any reason by any court of competent jurisdiction, such provision shall be severed and the remainder of provisions of the terms and conditions shall continue in full force and effect as if the Term of Use had been executed with the invalid, illegal or unenforceable provision eliminated.
11. If there are any discrepancies in the information provided, please bring it to attention of Datanet for suitable rectification measures.

**Buy Online This Complete Book At
Datanet India eBooks Store**

www.indiastatpublications.com

or go directly at

[http://www.indiastatpublications.com/
Assembly_factbook/Bihar/Sasaram/Chainpur](http://www.indiastatpublications.com/Assembly_factbook/Bihar/Sasaram/Chainpur)

 **india**stat**elections**

ISBN : 978-93-5313-063-3



9 789353 130633